

## Correction



Life Science Alliance

# Correction: The pyruvate dehydrogenase complex regulates mitophagic trafficking and protein phosphorylation

Panagiota Kolitsida<sup>1</sup> , Vladimir Nolic<sup>1</sup> , Jianwen Zhou<sup>2</sup> , Michael Stumpe<sup>2</sup> , Natalie M Niemi<sup>3</sup> , Jörn Dengjel<sup>2</sup> , Hagai Abeliovich<sup>1</sup>

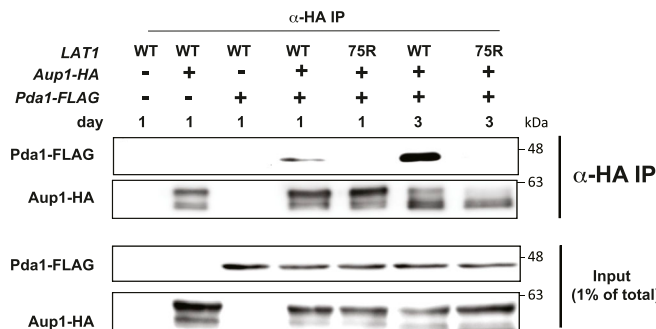
<sup>1</sup>Department of Biochemistry, Food Science and Nutrition, Hebrew University of Jerusalem, Rehovot, Israel <sup>2</sup>Department of Biology, University of Fribourg, Fribourg, Switzerland <sup>3</sup>Department of Biochemistry and Molecular Biophysics, Washington University, St. Louis, MO, USA

Correspondence: [hagai.abeliovich@mail.huji.ac.il](mailto:hagai.abeliovich@mail.huji.ac.il)

DOI <https://doi.org/10.26508/lsa.202402684> | Received 28 February 2024 | Accepted 1 March 2024 | Published online 14 March 2024

Article: Kolitsida P, Nolic V, Zhou J, Stumpe M, Niemi NM, Dengjel J, Abeliovich H (2023 Jul 13) The pyruvate dehydrogenase complex regulates mitophagic trafficking and protein phosphorylation. *Life Sci Alliance* 6(9): e202302149. doi: [10.26508/lsa.202302149](https://doi.org/10.26508/lsa.202302149). PMID: 37442609.

The authors would like to correct an error in Fig 6. A minus sign appears instead of a plus sign for *Aup1-HA* in the fourth column of the figure, which renders the results meaningless. The corrected version of Fig 6 is now provided.





**License:** This article is available under a Creative Commons License (Attribution 4.0 International, as described at <https://creativecommons.org/licenses/by/4.0/>).