

Washington University School of Medicine

Digital Commons@Becker

2020-Current year OA Pubs

Open Access Publications

12-1-2023

Optimized strategy for real-time qPCR detection of *Onchocerca volvulus* DNA in pooled *Simulium* sp. blackfly vectors

Mary Doherty
Smith College

Peter U. Fischer
Washington University School of Medicine in St. Louis
et al.

Follow this and additional works at: https://digitalcommons.wustl.edu/oa_4



Part of the [Medicine and Health Sciences Commons](#)

Please let us know how this document benefits you.

Recommended Citation

Doherty, Mary; Fischer, Peter U.; and et al., "Optimized strategy for real-time qPCR detection of *Onchocerca volvulus* DNA in pooled *Simulium* sp. blackfly vectors." *PLoS Neglected Tropical Diseases*. 17, 12. e0011815 (2023).

https://digitalcommons.wustl.edu/oa_4/3023

This Open Access Publication is brought to you for free and open access by the Open Access Publications at Digital Commons@Becker. It has been accepted for inclusion in 2020-Current year OA Pubs by an authorized administrator of Digital Commons@Becker. For more information, please contact vanam@wustl.edu.

RESEARCH ARTICLE

Optimized strategy for real-time qPCR detection of *Onchocerca volvulus* DNA in pooled *Simulium sp.* blackfly vectors

Mary Doherty^{1*}, Jessica R. Grant¹, Nils Pilotte², Sasisekhar Bennuru³, Kerstin Fischer⁴, Peter U. Fischer⁴, Sara Lustigman⁵, Thomas B. Nutman³, Kenneth Pfarr^{6,7}, Achim Hoerauf^{6,7}, Thomas R. Unnasch⁸, Hassan K. Hassan⁸, Samuel Wanji^{9,10}, Patrick J. Lammie¹¹, Eric Ottesen¹¹, Charles Mackenzie^{11,12}, Steven A. Williams^{1,13}

1 Department of Biological Sciences, Smith College, Northampton, Massachusetts, United States of America, **2** Department of Biological Sciences, Quinnipiac University, Hamden, Connecticut, United States of America, **3** Laboratory of Parasitic Diseases, National Institute of Allergy and Infectious Diseases, Bethesda, Maryland, United States of America, **4** Department of Medicine, Washington University School of Medicine, St. Louis, Missouri, United States of America, **5** Laboratory of Molecular Parasitology, Lindsley F. Kimball Research Institute, New York Blood Center, New York, New York, United States of America, **6** Institute of Medical Microbiology, Immunology and Parasitology, University Hospital Bonn, Bonn, Germany, **7** German Center for Infection Research (DZIF), Partner-Site Bonn-Cologne, Bonn, Germany, **8** Center for Global Health Infectious Disease Research, University of South Florida, Tampa, Florida, United States of America, **9** Parasite and Vectors Research Unit, Department of Microbiology and Parasitology, University of Buea, Buea, Cameroon, **10** Research Foundation in Tropical Diseases and the Environment, Buea, Cameroon, **11** NTD-SC, Task Force for Global Health, Atlanta, Georgia, United States of America, **12** RLMF, The END Fund, New York, New York, United States of America, **13** Molecular and Cellular Biology Program, University of Massachusetts, Amherst, Massachusetts, United States of America

* mdoherty82@smith.edu



OPEN ACCESS

Citation: Doherty M, Grant JR, Pilotte N, Bennuru S, Fischer K, Fischer PU, et al. (2023) Optimized strategy for real-time qPCR detection of *Onchocerca volvulus* DNA in pooled *Simulium sp.* blackfly vectors. PLoS Negl Trop Dis 17(12): e0011815. <https://doi.org/10.1371/journal.pntd.0011815>

Editor: Krystyna Cwiklinski, University of Liverpool, UNITED KINGDOM

Received: April 25, 2023

Accepted: November 22, 2023

Published: December 14, 2023

Copyright: This is an open access article, free of all copyright, and may be freely reproduced, distributed, transmitted, modified, built upon, or otherwise used by anyone for any lawful purpose. The work is made available under the [Creative Commons CC0](https://creativecommons.org/licenses/by/4.0/) public domain dedication.

Data Availability Statement: All the data used in this submission has been submitted in the manuscript itself or the [supplemental materials](#).

Funding: This work received financial support from the Coalition for Operational Research on Neglected Tropical Diseases, which is funded at The Task Force for Global Health primarily by the Bill and Melinda Gates Foundation and by the United States Agency for International Development through its Neglected Tropical

Abstract

Background

Onchocerca volvulus is a filarial parasite that is a major cause of dermatitis and blindness in endemic regions primarily in sub-Saharan Africa. Widespread efforts to control the disease caused by *O. volvulus* infection (onchocerciasis) began in 1974 and in recent years, following successful elimination of transmission in much of the Americas, the focus of efforts in Africa has moved from control to the more challenging goal of elimination of transmission in all endemic countries. Mass drug administration (MDA) with ivermectin has reached more than 150 million people and elimination of transmission has been confirmed in four South American countries, with at least two African countries having now stopped MDA as they approach verification of elimination. It is essential that accurate data for active transmission are used to assist in making the critical decision to stop MDA, since missing low levels of transmission and infection can lead to continued spread or recrudescence of the disease.

Methodology/Principal findings

Current World Health Organization guidelines for MDA stopping decisions and post-treatment surveillance include screening pools of the *Simulium* blackfly vector for the presence of *O. volvulus* larvae using a PCR-ELISA-based molecular technique. In this study, we

Diseases Program. SAW received funding from the Bill and Melinda Gates Foundation Subaward S019.1G. AH and KP received funding from the German Center for Infection Research (DZIF, TI 03.907 and TTU 03.815). HKH and TU received funding from the Task Force for Global Health, subcontract #NTD-SC-#S054U. SL received funding from the New York Blood Center intramural funds. SW is the Senior Fellow Plus of the European and Developing Countries Clinical Trials Partnership: TMA2019SFP-2814 Senior Fellowships Plus - 2019 – EDCTP. The work at Washington University School of Medicine was supported by a grant of the Barnes Jewish Hospital Foundation. This work was supported in part by the Division of Intramural Research (DIR) of the National Institute of Allergy and Infectious Diseases, NIH. The funders had no role in study design, data collection and analysis, decision to publish, or preparation of the manuscript. MD and JG received salary funding from the Bill and Melinda Gates Foundation. <https://www.cor-ntd.org/> <https://www.gatesfoundation.org/> <https://www.dzif.de/en> <https://www.taskforce.org/> <https://www.nybc.org/> <https://www.foundationbarnesjewish.org/> <https://www.niaid.nih.gov/about/dir>.

Competing interests: The authors have declared that no competing interests exist.

address the potential of an updated, practical, standardized molecular diagnostic tool with increased sensitivity and species-specificity by comparing several candidate qPCR assays. When paired with heat-stable reagents, a qPCR assay with a mitochondrial DNA target (OvND5) was found to be more sensitive and species-specific than an O150 qPCR, which targets a non-protein coding repetitive DNA sequence. The OvND5 assay detected 19/20 pools of 100 blackfly heads spiked with a single L3, compared to 16/20 for the O150 qPCR assay.

Conclusions/Significance

Given the improved sensitivity, species-specificity and resistance to PCR inhibitors, we identified OvND5 as the optimal target for field sample detection. All reagents for this assay can be shipped at room temperature with no loss of activity. The qPCR protocol we propose is also simpler, faster, and more cost-effective than the current end-point molecular assays.

Author summary

Onchocerca volvulus is a nematode parasite that is the causative agent of river blindness in Africa, the Americas and Yemen and is transmitted by blackflies of the genus *Simulium*. Efforts to reduce and eliminate this neglected tropical disease focus on mass drug administration (MDA) with ivermectin and require reliable and accurate diagnostic assays to monitor the progress of once or twice-yearly treatments. One important measure of the impact of MDA is to screen pools of vector flies collected in endemic areas for the presence of L3-stage (infective) larvae. Since dissection of individual flies and microscopic examination to search for larvae in the flies is very time-consuming and results in many false negative and false positive results (due to morphologically similar larvae of closely related animal parasites), DNA-based PCR assays have proven extremely useful. An existing PCR-ELISA method based on amplification and detection of the O150 repeat found in the parasites has proven very useful over the last 25 years. An updated real-time qPCR-based method using a mitochondrial DNA target (OvND5) has now been developed that is more sensitive, more species specific, less-time consuming and less costly than the original O150 PCR-ELISA assay. This assay is ready for field evaluation.

Introduction

Onchocerciasis is an infectious disease caused by the filarial parasite, *Onchocerca volvulus* [1,2]. This parasite is transmitted to humans through the bite of a vector, primarily the blood-seeking blackflies of the *Simulium* genus [3–6]. Onchocerciasis frequently results in severe skin and ocular disease. In the most severe cases, the disease can result in permanently disfigured skin, blindness [7], and is suspected of causing central nervous system pathologies such as epilepsy [8–12].

Community directed treatment with ivermectin (CDTI) is a form of mass drug administration (MDA) that has become the standard of treatment for efforts seeking to eliminate onchocerciasis by interrupting transmission [2,13]. The impact of MDA on transmission of onchocerciasis by blackflies can be verified if there are accurate diagnostic tools to ensure: 1) that the treatment is sufficiently widespread, 2) that interventions are having the intended

impact, and 3) that there are no *Simulium* spp. flies containing *O. volvulus* infective larvae (stage L3) remaining to transmit the parasite within a geographic area [2,5,9,11,14–20].

The current method recommended by the World Health Organization (WHO) for screening for *O. volvulus* infective larvae (L3-stage) in blackflies is a PCR-ELISA method developed 25 years ago that uses the O150 repeat as the molecular target for PCR amplification [21,22]. Although effective at detecting *O. volvulus* L3 larvae in pools of blackfly heads, this method would benefit from updating to: 1) simplify the testing procedure, 2) reduce cost, 3) reduce the time required to complete the assay, and 4) use reagents that can be shipped and stored for long periods of time at ambient temperature. [5,23–25].

Several new molecular diagnostic methods have recently been developed to determine the prevalence of *O. volvulus* in populations of *Simulium* spp. flies [5,23]. From the suite of choices developed to date, the most sensitive and species-specific tools have been based on nucleic acid amplification tests (NAAT), using either loop-mediated isothermal amplification (LAMP) or real-time quantitative polymerase chain reaction (qPCR) [15,16,21,23,24,26–29]. Each of these methods can determine the presence or absence of the parasite from very small quantities of starting material, and while the LAMP assay has the advantage of being easily adaptable to field settings, it is less sensitive and provides less definitive results than qPCR. Laboratory based real-time qPCR, on the other hand, provides greater sensitivity of detection and allows for a clear and accurate presence/absence read-out of results. New, portable, battery-operated qPCR instruments have recently made it possible for qPCR to become more field friendly [30]. However, the use of these new qPCR systems in the field is still relatively untested. Therefore, for the current optimization project, it was decided to test only laboratory-based qPCR assays that could be run in endemic country laboratories with the potential for high throughput.

With the advent of more widespread qPCR diagnostic testing worldwide (e.g., for SARS-CoV-2 and HIV), there is increasing accessibility to the required instrumentation across a large number of Lower- and Middle-Income Countries (LMIC). As a byproduct of the SARS-CoV-2 pandemic, there has also been an increased push for the development of stable qPCR reagents, and for the acquisition of real-time PCR instruments all over the globe [31–37]. Such advances have made it possible to adopt qPCR for neglected tropical disease diagnostics at an affordable cost. To develop a standardized, real-time qPCR assay that can be easily adopted for widespread use worldwide, we evaluated several qPCR diagnostic assays developed in the last few years for detecting *O. volvulus*. Here, we describe the blind testing of samples across multiple laboratories, to determine the most sensitive, reproducible, reliable, specific, and inhibitor-resistant qPCR assay. Reliability and consistency were evaluated through the testing of high replicate numbers of spiked samples, as well as on field samples from a previously published study [5]. Lastly, we evaluated the use of temperature-stable qPCR reagents in order to reduce logistical costs and improve reliability of the tests under a variety of challenging conditions.

Methods

All testing was performed at Smith College, unless otherwise noted.

Genomic DNA isolation from *O. volvulus* and *O. ochengi*

Onchocerca volvulus L3 larvae were isolated at the New York Blood Center (USA) using procedures described previously [38,39]. Genomic DNA (gDNA) from *O. volvulus* larvae was extracted using the QIAamp DNA Mini Kit (Qiagen, Hilden, Germany) according to the manufacturer's protocol and as previously described [40].

O. ochengi gDNA was extracted from 1 frozen adult female worm using the Wizard Genomic DNA Purification Kit (Promega, Madison, WI, USA) as per the manufacturer's protocol

with the following modifications: the worm was enzymatically digested in Nuclei Lysis Solution containing Proteinase K at 55°C for 2 hrs and the sample was treated at 37°C with RNase, DNase-free, a mixture of ribonucleases produced by Roche (Basel, Switzerland) to remove RNA.

Preparation of pools of spiked *Simulium* sp. blackfly heads

Simulium vittatum cytospecies IS-7 is a non-vector blackfly species, provided by the University of Georgia Black Fly Research and Resource Center. While the use of *S. damnosum* would have been optimal, *S. vittatum* were chosen for this study because wild-caught *Simulium* species could potentially carry *Onchocerca* species that might impact sensitivity and specificity analyses. Twenty pools of 100 *S. vittatum* fly heads were prepared by isolating heads from the bodies using previously described methods [15] with the modification that air-dried flies were placed in a -80°C freezer overnight instead of in liquid nitrogen.

Cryopreserved *O. volvulus* L3 larvae were thawed and washed three times in PBS. Individual L3 were rinsed serially in 10, 20 and 100 µL of NET buffer (0.1 M Tris-HCl, pH8; 0.01 M EDTA; and 1M NaCl). The buffer rinses were retained and tested using the NIH O150 qPCR assay for *O. volvulus* DNA and the OoR1 qPCR assay to test for *O. ochengi* DNA. The testing of buffer rinses was done to ensure that no “free” DNA was present and that there was no contaminating *O. ochengi* DNA present prior to conducting any sample preparation for testing. The shipping buffer and first rinse buffer showed sporadic amplification for *O. volvulus* DNA, but the second and third rinses did not. None of the buffer rinses were positive for *O. ochengi* DNA. Presumably, the *O. volvulus* DNA in the initial buffer rinses came from material shed from the L3 larvae. Once rinsed, a single L3 was added to each of 10 pools of 100 blackfly heads. Sample creation occurred at Smith College to ensure that all labs received standardized samples for comparative testing of the qPCR assays. A single L3 larva was used for the creation of each sample because it represents the minimum number of larvae that can be found in a biologically relevant “weak positive” sample encountered under field conditions. Ten additional pools of 100 blackfly heads were not spiked and were used as negative controls.

DNA isolation from pools of blackfly heads

A modified version of the DNeasy Blood and Tissue kit (Qiagen) was used to extract DNA from pools of blackfly heads. The detailed protocol with modifications and recipes for buffers not provided with the extraction kit is included in [S1 Methods](#). Modifications included a second proteinase K treatment, and additional AW1 buffer rinses. Samples were stored at -20°C prior to being shipped on dry ice to the three participant laboratories.

Study design for comparison of the candidate qPCR assays

Three different qPCR primer/probe assays designed and intended to detect *O. volvulus* with high sensitivity and species-specificity were selected for comparison in this study: two of these assays targeted the *O. volvulus* O150 repeat DNA (SC O150, developed at Smith College, and NIH O150, developed at the National Institute of Health), and one targeted the mitochondrial NADH dehydrogenase subunit 5 gene (OvND5). Three *O. ochengi*-specific assays (OoND5, OoR1 and OoR5) were also used in this study. OoR1 and OoR5 are newly developed assays that target highly repeated sequences that are specific to *O. ochengi* [41]. All of the qPCR probes were labeled with a 5' FAM fluorophore, an internal ZEN quencher, and a 3' 3IABkFQ quencher. Probes were synthesized by Integrated DNA Technologies, Inc. (Coralville, IA, USA). [Table 1](#) provides sequences of all primers and probes used in this study and references describing those that have been previously published.

Table 1. Primer and probe sequences for all real-time PCR assays used in this study.

Name	Sequence (5'-3')	Target	Reference
NIH O150 F	CTGATGACCTGTGACCCTAATC	<i>O. volvulus</i> O150 repeat (141 bp)	this study
NIH O150 R	TCGCCTGTAAATGTGGAA		
NIH O150 PROBE	ACGGGTACATACATTGCAATTGGGTCCC		
SC O150 F	GCCGTGTAAATGTGGAAATTCA	<i>O. volvulus</i> O150 repeat (214 bp)	this study
SC O150 R1 *	TGATGACCTATGAHCCCTAATHCA		
SC O150 R2 *	GATTATTAACAGATGACCTATGACATATAATTTCA		
SC O150 PROBE	GGACCCAATTGCAATGTATGTACCCGT		
OvND5 F	GCTATTGGTAGGGGTTTGCAT	<i>O. volvulus</i> NADH (128 bp)	[16]
OvND5 R	CCACGATAATCCTGTTGACCA		
OvND5 PROBE	TAAGAGGTTATTGTTTATGCAGATGG		
OoND5 F	GCTATTGGTAGGGGTTTGCAT	<i>O. ochengi</i> NADH (128 bp)	[16]
OoND5 R	CCACGATAATCCTGTTGACCA		
OoND5 PROBE	TAAGAGATTGTTGTTTATGCAGATAGG		
OoR1 F	CGCTAATCACGTGGCTGAT	<i>O. ochengi</i> (105 bp)	this study
OoR1 R	TCACATGATCAGCACCATTCA		
OoR1 PROBE	CGAGATCACTGCATGCTAAGTCACGT		
OoR5 F	CACTGATCACGTGTCTGTTTCAT	<i>O. ochengi</i> (144 bp)	this study
OoR5 R	GTCAGTGCATGATAGCCAAT		
OoR5 PROBE	CAGTCACGGGATCAGTGCATAGGC		

* Reverse primers R1 and R2 were pooled in equal concentrations

<https://doi.org/10.1371/journal.pntd.0011815.t001>

Initial qPCR primer/probe optimization

Initial qPCR primer/probe optimization was conducted independently at Smith College (SC), the Washington University School of Medicine (WU), and the National Institutes of Health (NIH), using each laboratory's standard reagents and equipment (see below). DNA template used for testing undiluted unless otherwise noted.

Smith College reaction conditions and equipment

The SC laboratory used TaqPath ProAmp (TP; ThermoFisher Scientific, Waltham, MA, USA) or FastTaq Universal (FT; ThermoFisher Scientific) for initial testing, since the SC O150 assay had initially been optimized using TP, and all the other assays with FT. Each sample was run in triplicate 7 μ L reactions (TP) or 10 μ L reactions (FT). For all TP reactions, a 7 μ L reaction volume contained 3.5 μ L of TP, 150nM forward primer, 1000nM reverse primer, 125nM probe, 0.608 μ L of nuclease-free water, and 2 μ L of template. Each FT reaction contained 5 μ L FT, 1 μ L primer/probe mix (IDT; Integrated DNA Technologies, Inc.), 3 μ L of nuclease-free water, and 1 μ L of template. Smith College used the Applied Biosystems StepOnePlus Real-Time PCR System (ThermoFisher Scientific). Cycling conditions for TP assays had an initial two-minute incubation at 50°C, followed by a 10 min incubation at 95°C and then 40 cycles of 1) 15 sec denaturation at 95°C and 2) one min annealing and extension at 59°C for the SC O150 assay and at 60°C for all other assays. FT assays had an initial 30 sec incubation at 60°C, followed by a one min incubation at 95°C and 40 cycles of 1) one sec denaturation at 95°C and 2) 20 second annealing and extension at 60°C.

Washington University School of Medicine reaction conditions and equipment

The Washington University laboratory carried out qPCR reactions using the QuantStudio 6Flex Thermocycler (ThermoFisher Scientific) in a 10 μ L total reaction volume containing

5 μ L TaqMan Fast Advanced Master Mix (ThermoFisher Scientific), 1 μ L primer/probe mix (IDT), 1 μ L template and 3 μ L nuclease-free water. The cycling conditions included a pre-amplification hold at 60°C for 30 sec then denaturation at 95°C for 20 sec, followed by amplification with 40 cycles of 95°C for 1 sec and 60°C for 20 sec. Following amplification, a post-PCR incubation at 60°C for 30 sec occurred. In order to check for any PCR inhibition, the extracted DNA samples were run in parallel reactions with spiked *O. volvulus* DNA.

National Institutes of Health reaction conditions and equipment

The NIH laboratory used TaqMan Fast Advanced Master Mix (ThermoFisher Scientific) for all final qPCR analyses. Each sample was run in triplicate 10 μ L reactions on the ViiA 7 Real-Time PCR system (ThermoFisher Scientific). Reactions used the same recipes as those described above for testing at WU. The optimized cycling conditions were 95°C denaturation for 20 secs and then 40 cycles of 1) 1 sec denaturation at 95°C and 2) 20 sec annealing and extension at 60°C.

Methodological “Targets” specific to project objectives

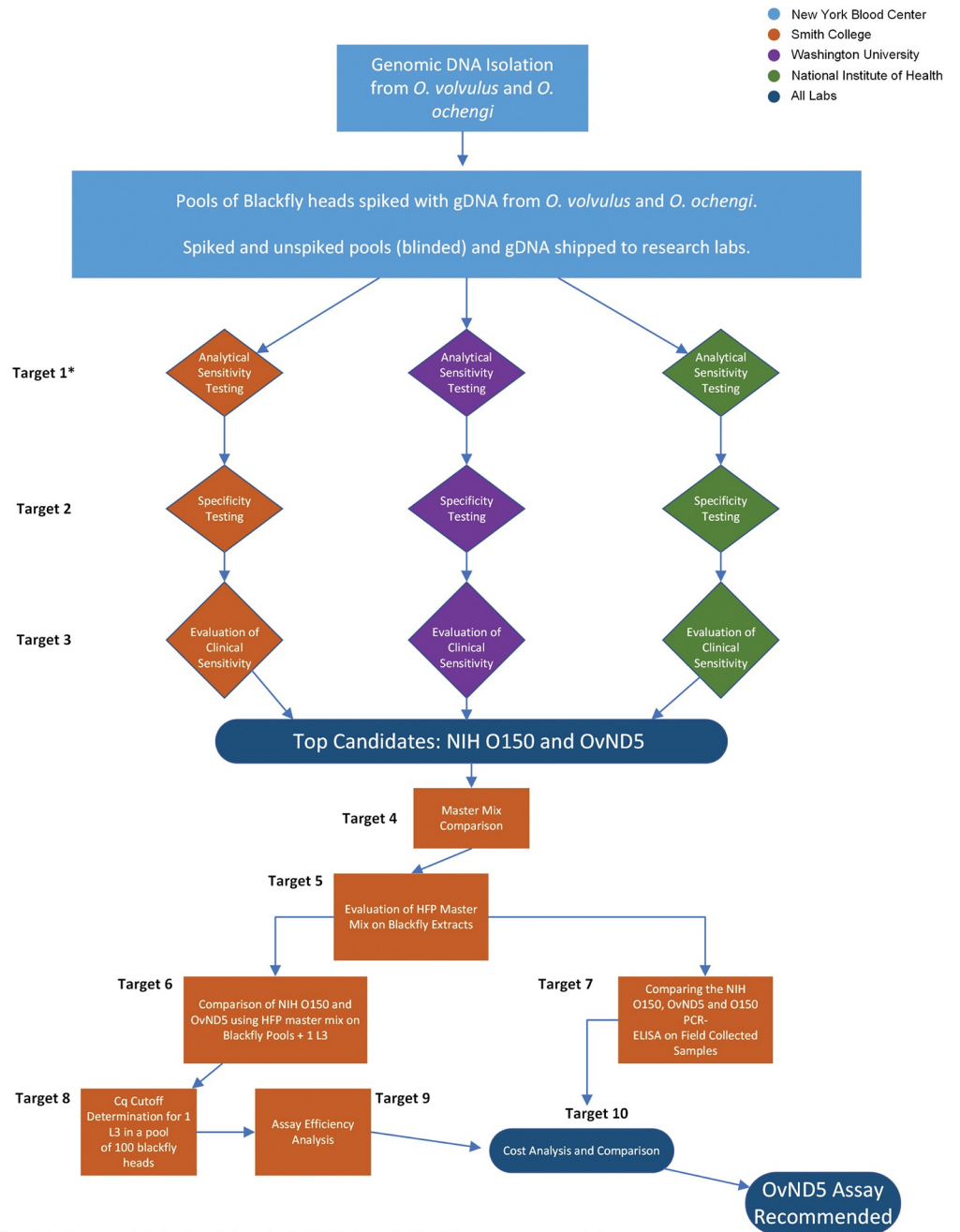
Our selection criteria are broken down into 10 methodological targets that we utilized to systematically identify an optimal qPCR assay and shelf stable reagents. A diagrammatic representation of the workflow, and the process used to select the most optimal assay and reagents is shown in Fig 1.

Target 1: Identification of the analytical limits of detection for the three candidate *O. volvulus* qPCR assays. To determine the analytical sensitivity of the three *O. volvulus* qPCR assays, *O. volvulus* gDNA dilutions at 100 pg/ μ L, 10 pg/ μ L, 1 pg/ μ L, 100 fg/ μ L, 10 fg/ μ L, 1 fg/ μ L, 100 ag/ μ L, 10 ag/ μ L, and 1 ag/ μ L were produced at the New York Blood Center (NYBC) and sent to SC, WU and NIH. These samples were used in each laboratory as the templates for limit of detection testing using the specific conditions described above for each laboratory. This analytical comparison was done on purified *O. volvulus* gDNA as a pre-screen for significant performance differences between the three assays prior to moving ahead with specificity testing.

Target 2: Specificity testing of the three *O. volvulus* qPCR assays. Two labs (WU and NIH) provided *O. ochengi* DNA to facilitate the specificity testing of each candidate *O. volvulus* assay. Specificity testing against *O. ochengi* gDNA occurred at concentrations of 1000pg/ μ L, 100pg/ μ L, 10pg/ μ L, 1pg/ μ L, 0.1pg/ μ L, and 0.001pg/ μ L. Previous work has strongly suggested that *O. ochengi* is the most closely related *Onchocerca* species to *O. volvulus* [42]. For this reason, *O. ochengi* DNA was selected as the most appropriate sample type for demonstrating species-specificity of the *O. volvulus* assays. These samples were first tested with three *O. ochengi*-specific assays OoND5, OoR1 and OoR5 to confirm the identity of the DNA (S1 Table). These DNA samples were then used in each participant laboratory to test the species-specificity of the SC O150, NIH O150 and OvND5 assays, using the reaction conditions and cycling recipes described above.

Target 3: Evaluation of clinical sensitivity. Ten pools of 100 blackfly heads were spiked with a single *O. volvulus* L3-staged larva, and 10 non-spiked pools were generated. DNA extraction products from the spiked and non-spiked samples were tested with the SC O150, NIH O150 and OvND5 assays in all three laboratories using conditions described above. Samples were also tested with the *O. ochengi*-specific OoR1 assay at the SC and NIH laboratories. The *O. volvulus* L3 positive/negative status of each sample was blinded to researchers at WU and NIH and to the research associate doing the work at SC.

Target 4: Testing six shelf-stable qPCR reagent mixes for *O. volvulus* gDNA amplification. Six shelf-stable reagent mixes were selected for testing based on a search for



*Target 1 testing was conducted at Smith College using TaqPath ProAmp or Fast Taq Universal master mixes, and at Washington University and the NIH using Taqman Fast Advanced master mix.

Fig 1. Workflow for the selection of the optimal qPCR assay. Diagram of the steps involved in selecting the optimal *O. volvulus* qPCR assay and reagents, including steps to compare the O150 PCR-ELISA assay with the qPCR assay results obtained in this study. Each “Target” described here is identified in the workflow by number.

<https://doi.org/10.1371/journal.pntd.0011815.g001>

commercially available reagents using the criteria that they not require refrigeration or freezing, and that they utilize a thermostable DNA polymerase. The six reagent mixes were evaluated on their ability to detect *O. volvulus* gDNA using the NIH O150 qPCR assay at SC. Mixes included two complete master mixes: one that is stable at room temperature (HFP) and one that is designed to be lyophilized (TC), two polymerases (no master mix) that are designed to

Table 2. Shelf-stable reagents/polymerases compared in *O. volvulus* DNA detection.

Product	Type	Supplier	Cat #
HOT FIREPol Probe qPCR Mix Plus (HFP)	Temperature stable	Solis Biodyne. Tartu, Estonia	08-14-00020
TaqMan Lyo-ready qPCR Master Mix (TC)	Lyophilizable	Thermo Fisher Scientific. Waltham, MA	C1408SMP
TaKaRa Taq Hot-Start Version (THS)	Lyophilizable	Takara Bio USA, Inc. Mountain View, CA	XA0025
TaKaRa Ex Taq Hot-Start Version (ExTHS)	Lyophilizable	Takara Bio USA, Inc. Mountain View, CA	XA0027
Edvotek PCR beads (EB)	Lyophilized	Edvotek. Bethesda, MD	625
Edvotek PCR beads PLUS (EBP)	Lyophilized	Edvotek. Bethesda, MD	PCR PLUS

<https://doi.org/10.1371/journal.pntd.0011815.t002>

be lyophilized (THS and ExTHS), and two polymerases produced as lyophilized "beads" (EB and EBP) (Table 2). Each polymerase/reagent mix was tested at time 0, one week, three weeks and 3 months following storage at ambient temperature (average ~19.5°C). Reagents were tested against *O. volvulus* gDNA at a standard concentration (10ng/reaction).

The conditions for preparation and use of each of these shelf-stable reagents/polymerases are described in detail in [S2 Methods](#).

Target 5: Evaluation of the HFP shelf-stable master mix on blackfly extracts. The NIH O150 assay coupled with the HFP shelf-stable qPCR master mix was also tested at SC against blackfly DNA extracts spiked with *O. volvulus* gDNA. These tests were intended to assess the degree to which blackfly extracts inhibited amplification using the shelf-stable master mix. *O. volvulus* gDNA was mixed with blackfly DNA extraction product to yield 100 ng of total DNA per sample, including 90 ng of blackfly DNA and 10 ng of *O. volvulus* DNA. After mixing, samples were diluted 1:10 in nuclease-free water. Both undiluted and 1:10 dilutions were then used as template in reactions with the HFP qPCR reagents as described above. 10 ng/μL of *O. volvulus* gDNA in nuclease-free water was used as a positive control. One μL of 10 ng/μL concentration template DNA was used for each qPCR reaction as described in [S2 Methods](#) and as used in the Target 4 methods found above.

Target 6: Comparing the NIH O150 and OvND5 qPCR assays using the shelf-stable HFP polymerase to detect *O. volvulus* in pools of 100 blackfly heads spiked with a single L3-infective larva. To determine which assay (NIH O150 or OvND5) performed best using the shelf stable HFP reaction mix, 20 pools of 100 *S. vittatum* heads were spiked with one *O. volvulus* L3 each. All samples then underwent DNA extraction as described above. All 20 extraction products were tested using the NIH O150 and OvND5 qPCR assays coupled with the HFP master mix. All reactions were run in triplicate using 1 μL of extract as template. Due to the presence of inhibitors within the fly extracts all NIH O150 and OvND5 assays produced negative results. 1:20 dilutions of the fly extracts in nuclease-free water were then tested in an effort to overcome this inhibition. The mean quantification cycle (Cq) and standard deviation for the three replicate tests of each of the 20 dilution samples (n = 60) were calculated for both the NIH O150 and OvND5 assays.

Target 7: Comparative testing of the O150 PCR-ELISA, the NIH O150 assay, and the OvND5 assay on field samples from Cameroon using the HFP shelf-stable polymerase. Genomic DNA extracts from 129 field samples of blackfly heads previously collected as part of an unrelated study in Cameroon [5] were tested with both the NIH O150 and the OvND5 qPCR assays using the HFP shelf-stable reagents. DNA samples were previously isolated from pools of 100 *Simulium* spp. flies collected using the human landing catch method in the Mbam drainage system in Cameroon. As part of the previous study, all DNA samples were assayed for the presence of *O. volvulus* using a LAMP assay and a multiplex PCR assay (OvActin qPCR [5]). In order to evaluate the performance of the NIH O150 and OvND5 assays, these DNA samples were blinded, and then tested using both assays. Results were then compared with

those obtained from the O150 PCR-ELISA [27] as well as with the results previously obtained by the original authors using LAMP and OvActin assays. For each 10 μ l reaction, the HFP assay contained 2 μ L HFP and 1 μ L NIH O150 primer/probe mix or OvND5 primer/probe mix (each mix consisted of 500nM of each primer, and 250nM of each probe, and was suspended to a final concentration of 100 μ M), 6 μ l of nuclease-free water and 1 μ L of template DNA. The plate was run on a StepOnePlus Real-Time PCR System with an initial two min incubation at 50°C, followed by a 15 min incubation at 95°C and 40 cycles of 1) a 15 sec denaturation step at 95°C and 2) a one min annealing and extension step at 60°C. For the original O150 PCR-ELISA, the assay was carried out on genomic DNA extracted from samples using methods described previously [27].

Target 8: Establishing a qPCR cutoff value for the presence of a single *O. volvulus* L3 larva in a pool of 100 blackfly heads. The data from Target 6 were used to establish a cutoff value for positive/negative OvND5 qPCR results using the HFP master mix. Recall that 20 pools of 100 *S. vittatum* heads were spiked with a single L3 larva and 1:20 dilutions of DNA extracts from each pool were tested in triplicate using the OvND5 assay. For each sample, a mean Cq value and standard deviation were determined. The pool with the highest Cq value was used to establish the cutoff by taking the mean Cq value of this sample plus three standard deviations.

Target 9: Determining OvND5 qPCR assay efficiency. Assay efficiency was determined using the OvND5 amplicon as template. Ten-fold serial dilutions of the OvND5 amplicon with concentrations ranging from 100 pg/ μ L to 10 ag/ μ L were used as template in the qPCR assay. Eleven replicate reactions were run for each tested concentration. The log of the amplicon copy number was plotted against the Cq for each concentration of OvND5 template. A linear regression line was calculated, and the slope of that line was used to calculate the assay efficiency using the formula [43] (S1 Data):

$$E = -1 + 10^{\left(\frac{-1}{\text{slope}}\right)}$$

Target 10: Comparing the cost of the OvND5 qPCR assay and the O150 PCR-ELISA. The cost of the OvND5 qPCR assay and the O150 PCR-ELISA assay were estimated based on the inclusion of reagent/supply and labor costs. Labor costs were estimated by using an average of actual salary data from selected endemic laboratories for experienced personnel with some molecular biology expertise. Estimated shipping costs were not included as these vary tremendously from country to country.

Results

Target 1: Identification of the analytical limits of detection for the three candidate *O. volvulus* qPCR assays. The analytical limits of detection of the three new *O. volvulus* qPCR assays were compared at SC, WU, and NIH by testing 10-fold serial dilutions of *O. volvulus* genomic DNA ranging from 10 pg/ μ L to 100 ag/ μ L. Results from all three laboratories were concordant. The two assays targeting the O150 repeat (NIH O150 and SC O150) had similarly low Cq values but the NIH assay more consistently amplified the lowest concentrations of *O. volvulus* genomic DNA. The OvND5 assay was slightly less sensitive, with Cq values about 4 cycles higher than either O150 assay. We determined the limit of detection to be 0.01 pg for the NIH O150 assay and 0.1 pg and for the OvND5 assay (Table 3).

Target 2: Specificity testing of the three *O. volvulus* qPCR assays. The specificity of each assay was tested using two different *O. ochengi* genomic DNA preparations at various concentrations. The NIH O150 and SC O150 assays both amplified *O. ochengi* DNA at

Table 3. Limit of detection for the three *O. volvulus* qPCR assays.

Assay Test Site	OvND5			NIH O150			SC O150		
	WU	SC	NIH	WU	SC	NIH	WU	SC	NIH
Ov gDNA									
10 pg	29.04	28.28	29.29	24.82	23.95	25.45	25.00	23.71	25.47
1 pg	33.05	32.24	33.80	28.88	26.66	29.17	29.50	25.07	29.04
0.1 pg	36.86	36.46	35.39	32.40	30.38	31.99	34.80	29.89	36.02
0.01 pg	39.36	***	37.11	34.43	34.12	35.06	***	34.09	***
0.001 pg	***	***	***	***	***	***	***	***	***

The OvND5, NIH O150 and SC O150 assays were tested in each of three laboratories: Washington University School of Medicine (WU), Smith College (SC), and the National Institutes of Health (NIH). Mean Cq values of three qPCR replicates are reported here

*** indicates no amplification

<https://doi.org/10.1371/journal.pntd.0011815.t003>

relatively high concentrations (Table 4). The OvND5 assay did not amplify either of the *O. ochengi* genomic DNA samples, even at the highest concentrations (Table 4), and therefore showed the best species-specificity.

Target 3: Evaluation of clinical sensitivity. Ten pools of 100 blackfly heads spiked with a single *O. volvulus* L3 and 10 pools of 100 blackfly heads only were prepared at SC. DNA was extracted, and aliquots were sent to the WU and NIH laboratories. Each laboratory tested these aliquots with the three candidate *O. volvulus* qPCR assays, and SC and NIH also tested them with the *O. ochengi*-specific OoR1 assay. Results were concordant across all three laboratories with 100% agreement for positive and negative samples for all three assays. Although all three tests gave similar results, the NIH O150 assay again produced a slightly lower mean Cq values than the other two assays (Table 5).

Target 4: Testing six shelf-stable qPCR reagent mixes for *O. volvulus* gDNA amplification. Six qPCR shelf-stable reaction mixes with DNA polymerase were freshly prepared and tested using the NIH O150 qPCR assay at one week, three weeks and 3 months following storage at ambient temperature. In addition, the HFP was tested at 6 months. The mean Cq of each assay is reported in Table 6. All of the reagents performed well initially, although the ExTHS assay did not amplify at three weeks. The non-lyophilized assay, HFP, produced consistent results over time with simple storage in liquid form at room temperature (and no

Table 4. Species-specificity testing for the three *O. volvulus* qPCR assays.

<i>O. ochengi</i> DNA source	Amount of Oo Genomic DNA in the PCR	NIH O150	Assay SC O150	OvND5
NIH Oo	1000 pg	34.64	36.70	***
NIH Oo	100 pg	***	***	***
NIH Oo	10 pg	***	***	***
NIH Oo	1 pg	***	***	***
WU Oo	1000 pg	30.95	37.88	***
WU Oo	100 pg	32.89	***	***
WU Oo	10 pg	34.31	***	***
WU Oo	1 pg	***	***	***

Genomic DNA from two different *O. ochengi* DNA samples (WU and NIH) were tested to determine the specificity of each qPCR assay. Mean Cq values of three qPCR replicates are reported here.

*** indicates no amplification

<https://doi.org/10.1371/journal.pntd.0011815.t004>

Table 5. Mean Cq values of three qPCR assays on spiked blackfly pools.

	Test Site	OvND5			NIH O150			SC O150			NIH OoR1	
		WU	SC	NIH	WU	SC	NIH	WU	SC	NIH	SC	
Sample 1	L3 +	26.68	28.53	26.52	24.4	26.49	24.21	26.52	27.16	26.84	***	***
Sample 2	L3 -	***	***	***	***	***	***	***	***	***	***	***
Sample 3	L3 +	26.54	28.16	28.60	24.68	26.49	24.29	26.52	26.83	26.53	***	***
Sample 4	L3 -	***	***	***	***	***	***	***	***	***	***	***
Sample 5	L3 -	***	***	***	***	***	***	***	***	***	***	***
Sample 6	L3 -	***	***	***	***	***	***	***	***	***	***	***
Sample 7	L3 +	27.19	29.04	26.52	25.19	27.47	25.23	27.59	27.48	27.56	***	***
Sample 8	L3 -	***	***	***	***	***	***	***	***	***	***	***
Sample 9	L3 +	27.41	29.41	26.97	25.9	27.61	25.42	28.23	27.86	28.80	***	***
Sample 10	L3 +	27.62	29.54	27.04	26.48	28.49	26.08	28.35	29.06	27.99	***	***
Sample 11	L3 +	27.75	29.27	26.94	27.02	28.43	25.94	28.87	29.70	27.86	***	***
Sample 12	L3 -	***	***	***	***	***	***	***	***	***	***	***
Sample 13	L3 +	28.04	30.06	28.25	25.83	27.71	26.32	28.61	28.58	29.92	***	***
Sample 14	L3 -	***	***	***	***	***	***	***	***	***	***	***
Sample 15	L3 -	***	***	***	***	***	***	***	***	***	***	***
Sample 16	L3 +	28.34	30.27	29.04	25.84	27.79	26.06	28.16	28.62	30.30	***	***
Sample 17	L3 -	***	***	***	***	***	***	***	***	***	***	***
Sample 18	L3 +	28.04	30.15	29.52	27.63	29.67	28.16	29.80	30.52	31.13	***	***
Sample 19	L3 +	28.12	30.46	28.29	27.56	29.78	27.57	29.43	30.33	29.86	***	***
Sample 20	L3 -	***	***	***	***	***	***	***	***	***	***	***

Ten pools of 100 blackfly heads with a single *O. volvulus* L3 added (L3 +) and ten pools of 100 blackfly heads only (L3 -) were used to test the sensitivity of the OvND5 and the NIH O150 assays in the three laboratories. Additionally, the *O. ochengi*-specific assay Oo R1 was tested on the same samples at the NIH and SC laboratories to confirm specificity. Mean Cq values of three qPCR replicates are reported here

*** indicates no amplification.

<https://doi.org/10.1371/journal.pntd.0011815.t005>

preparation or lyophilization required). This mix was therefore determined to be the easiest and least expensive qPCR mix to prepare, ship and use. For this reason, the HFP mix was the only reagent tested at 6 months, and it performed as well at 6 months as it did at time 0 (Table 6). As a result, the HFP master mix was selected for use in all further testing.

Table 6. Mean Cq of six shelf-stable assays tested over time by the NIH O150 assay.

Product	Time 0	1 week	3 weeks	3 months	6 months
HOT FIREPoL Probe qPCR Mix Plus (HFP)	15.90	15.81	15.55	14.91	14.41
TaqMan Lyo-ready qPCR Master Mix (TC)	18.93	18.27	15.90	16.82	ND
TaKaRa Taq Hot-Start Version (THS)	15.56	16.04	16.32	14.81	ND
TaKaRa Ex Taq Hot-Start Version (ExTHS)	15.63	17.37	***	15.34	ND
Edvotek PCR beads (EB)	14.90	11.95	14.50	13.61	ND
Edvotek PCR beads PLUS (EBP)	15.54	14.98	15.25	13.58	ND

Enough of each qPCR assay mix was initially prepared to perform testing at each time point with the same stock aliquot of master mix. All assays except HFP were lyophilized in tubes containing enough reagents for 12 assays. These were rehydrated at each time point and tested using 10 ng of *O. volvulus* gDNA as template. The HFP assay was mixed and aliquoted in tubes containing enough reagent for 12 assays. These were kept in the dark at room temperature and tested at each time point using 10 ng of *O. volvulus* gDNA as template. Mean Cq values of three qPCR replicates are reported here

*** indicates no amplification.

<https://doi.org/10.1371/journal.pntd.0011815.t006>

Table 7. Testing HFP shelf-stable qPCR reagents on blackfly DNA extracts spiked with OvDNA.

	HFP
	Mean Cq
Undiluted Ov DNA + Fly Extract	***
1:10 Diluted Ov DNA + Fly Extract	19.78
1:10 Diluted Ov DNA (no Fly Extract)	15.96

The mean Cq values of three replicate tests per sample are reported

*** indicates no amplification

<https://doi.org/10.1371/journal.pntd.0011815.t007>

Target 5: Evaluation of the HFP shelf-stable master mix on blackfly extracts. The HFP shelf-stable qPCR mixes were next tested on blackfly DNA extracts spiked with 10 ng of *O. volvulus* DNA (OvDNA) using the NIH O150 qPCR assay. The undiluted OvDNA+fly extract was not amplifiable with the HFP but was successfully amplified when a 1:10 dilution of the OvDNA+fly extract in nuclease-free water was used. 1:10 sample dilutions of OvDNA without fly extract added were also tested for comparison. With HFP, the diluted OvDNA + fly extract gave a mean Cq value only 3.82 cycles greater than the diluted OvDNA without fly extract (19.78 vs 15.96, Table 7) indicating that HFP is reasonably resistant to inhibition by the blackfly extracts.

Target 6: Comparing the NIH O150 and OvND5 qPCR assays using the shelf-stable HFP polymerase to detect *O. volvulus* in pools of 100 blackfly heads spiked with a single L3-infective larva. Twenty pools of 100 blackfly heads, each spiked with a single *O. volvulus* L3 larva, were tested with the NIH O150 and OvND5 qPCR assays using the shelf-stable HFP qPCR master mix. qPCR assays for each pool were run in triplicate. As described in Target 5 above, fly pool extracts inhibit qPCR assays. As a result, 1:20 dilutions of each of the extracted DNA samples were tested with the NIH O150 and OvND5 assays. All 20 pool extracts were successfully amplified by the OvND5 assay except Pool 9 (Table 8) while the NIH O150 assay proved more susceptible to inhibitors and failed to produce an amplification product for Pool 9, Pools 8, Pool 11, and Pool 14. The NIH O150 assay also failed to produce a product in two of the three replicates for Pool 3. In addition, the mean Cq for all of the samples that did amplify was 29.0 for OvND5 and 30.3 for NIH O150. The OvND5 results also showed a lower standard deviation (0.62) than the NIH O150 results (1.32).

Target 7: Comparative testing of the O150 PCR-ELISA, the NIH O150 assay, and the OvND5 assay on field samples from Cameroon using the HFP shelf-stable polymerase. DNA isolates from 129 field samples (collected and extracted using the Zymo Research Genomic DNA Tissue Mini-Prep Kit (California, USA) as part of a previously conducted and unrelated study [5]) were each tested in duplicate using the NIH O150 assay and in duplicate using the OvND5 assay coupled with HFP shelf-stable master mix. In addition, 127 of the 129 samples were tested at the University of South Florida with the original O150 PCR ELISA assay for comparison (two samples were not tested by the original O150 because those samples had been exhausted). In the case of differing results between replicates, the samples were re-run in duplicate. The sample was determined to be positive if the retest replicate were both positive, or if one of the replicates was positive and the other negative. If both of the retest replicates were negative, then the sample was determined to be a negative. The results were then shared with the original study's authors who broke the blinded code (Tables 9 and S2). The NIH O150 and OvND5 assays gave nearly identical results in identifying positive and negative pools. The two tests used in the original study [5], one LAMP and one qPCR, both gave many fewer positive results as did the original O150 PCR-ELISA assay. In addition, while the

Table 8. Comparison of OvND5 and NIH O150 qPCR performance in detecting one *O. volvulus* L3 larva in a pool of 100 *S. vittatum* blackfly heads for each of 20 samples.

Spiking experiment: One <i>O. volvulus</i> L3 larva in 100 Blackfly heads– 20 samples						
Sample	OvND5 Assay			NIH O150 Assay		
	Cq	Mean	SD	Cq	Mean	SD
1	28.90	28.52	0.43	30.47	29.96	0.46
	28.60			29.86		
	28.06			29.56		
2	28.41	28.46	0.10	30.07	30.16	0.08
	28.58			30.20		
	28.40			30.20		
3	28.70	28.89	0.18	***	32.63	N/A
	28.92			***		
	29.06			32.63		
4	29.55	29.24	0.87	30.71	31.11	1.07
	29.90			30.30		
	28.25			32.33		
5	28.71	28.98	0.40	29.08	28.75	0.29
	28.78			28.53		
	29.44			28.64		
6	28.79	29.38	0.85	29.87	29.84	0.21
	28.99			29.62		
	30.36			30.03		
7	28.94	28.86	0.62	31.24	31.48	0.51
	28.21			32.07		
	29.44			31.14		
8	29.11	29.38	0.50	***	N/A	
	29.07			***		
	29.96			***		
9	***	N/A		***	N/A	
	***			***		
	***			***		
10	30.84	30.02	0.72	30.97	30.89	0.18
	29.71			31.01		
	29.49			30.68		
11	28.82	28.60	0.55	***	N/A	
	29.00			***		
	27.97			***		
12	27.79	28.53	0.69	29.63	29.83	0.18
	29.17			29.97		
	28.63			29.88		
13	28.84	29.02	0.18	28.35	28.50	0.18
	29.03			28.45		
	29.21			28.70		
14	28.61	28.64	0.03	***	N/A	
	28.64			***		
	28.66			***		
15	28.68	28.46	0.20	30.04	29.61	0.40
	28.41			29.26		

(Continued)

Table 8. (Continued)

Spiking experiment: One <i>O. volvulus</i> L3 larva in 100 Blackfly heads– 20 samples						
Sample	OvND5 Assay			NIH O150 Assay		
	Cq	Mean	SD	Cq	Mean	SD
16	28.30			29.54		
	27.42	27.75	0.34	29.14	28.62	0.49
	28.11			28.16		
17	27.73			28.56		
	29.06	29.78	0.81	28.24	28.25	0.32
	29.63			28.58		
18	30.65			27.94		
	28.69	29.39	0.64	31.99	31.95	0.82
	29.54			32.75		
19	29.95			31.11		
	30.12	30.13	0.60	32.36	31.45	1.20
	30.73			30.09		
20	29.53			31.88		
	30.36	29.77	0.54	31.13	30.99	0.77
	29.29			30.17		
Assay Mean	29.66			31.68		
	29.04			30.25		
SD	0.62			1.32		

Mean Cq values and standard deviations for 20 samples run in triplicate are reported for each of the assays

*** indicates no amplification

<https://doi.org/10.1371/journal.pntd.0011815.t008>

OvND5 and NIH O150 qPCR assays showed excellent agreement with one another, the other 3 assays did not (S2 Table). These samples were collected as described by Abong, *et al.* [5], following mass drug administration (MDA) with ivermectin in a district in Cameroon: D0 (day zero), D30 (30 days post-treatment), D90 (90 days post-treatment), D180 (180 days post-treatment), and D270 (270 days post-treatment). Unlike the results from the original study and

Table 9. Comparison of OvND5 and NIH O150 qPCR results from the 129 pools of *Simulium* spp. flies with results reported by Abong *et al.* [5].

	Positive Detection of OvDNA			
	This Study	Abong <i>et al.</i> (2021) [5]		This Study
	NIH O150 and OvND5 Assays*	O150 LAMP	OvActin qPCR	O150 PCR-ELISA
D0	15/15 (100%)	5/15 (33%)	4/15 (26.7%)	3/15 (20.0%)
D30	16/17 (94%)	7/17 (41.2%)	4/17 (23.5%)	6/17 (35.3%)
D90	22/30 (73%)	8/30 (26.7%)	11/30 (36.7%)	7/30 (23.3%)
D180	10/14 (71%)	4/14 (28.6%)	4/14 (28.6%)	6/13 (46.2%)
D270	34/53 (64%)	23/53 (43.4%)	20/53 (37.7%)	20/52 (38.5%)
Positive Pools	97/129 (75%)	47/129 (36.4%)	43/129 (33.3%)	42/127 (33.0%)

Samples were collected at various time points following Mass Drug Administration (MDA) with of Ivermectin: D0 (day zero), D30 (30 days post-treatment), D90 (90 days post-treatment), D180 (180 days post-treatment), and D270 (270 days post-treatment). The number of positive pools out of the total number pools tested, and the percentage of positive pools is listed for each assay

*Cq values are reported in S2 Table.

<https://doi.org/10.1371/journal.pntd.0011815.t009>

from the results of the original O150 PCR-ELISA, the OvND5 and NIH O150 results show a gradual decrease in positivity over time following MDA.

Note that all of the samples identified as positive by the O150 LAMP, OvActin qPCR or the original O150 PCR-ELISA were detected as positive ($C_q \leq 33$, in >1 replicate PCR) by NIH O150 and the OvND5 assays with the exception of one sample that was positive only using the original O150 PCR-ELISA and one sample that was positive only when tested by the OvActin assay. The new NIH O150 and the OvND5 assays also detected many additional positives at each time point (see [S2 Table](#) for complete results for all 129 samples.)

Target 8: Establishing a qPCR cutoff value for the presence of a single *O. volvulus* L3 larva in a pool of 100 blackfly heads. The aim of this target was to identify an appropriate threshold (C_q value) that could be used as a likely indicator of the presence of at least one L3 larva in a pool of 100 blackfly heads using the OvND5 assay. To identify this threshold, we used the results obtained in the exploration of Target 6. In brief, one L3 larva was added to each of 20 pools of 100 blackfly heads. Pools were then extracted and the DNA from each sample was qPCR tested in triplicate. While both the NIH O150 and OvND5 qPCR assays were tested, this analysis was used to develop a C_q threshold for the OvND5 assay only (See [Table 8](#) for C_q values).

The OvND5 assay was demonstrated to be superior to the NIH O150 assay in terms of specificity ([Table 4](#)) and sensitivity when testing pools of 100 blackfly heads with a single L3 added ([Table 8](#)). Thus, it was next used to establish a threshold value to distinguish a clinically positive qPCR test (defined as resulting from a sample likely to contain at least one L3 larva) from a negative test (defined as resulting from a sample unlikely to contain at least one L3 larva). The mean and standard deviation for C_q values obtained for three replicate tests for each of the 19 samples that amplified by the OvND5 assay ($n = 57$) were 29.04 and 0.77 respectively. The range for positive C_q values was 27.42 to 30.84. One possible approach to assigning a threshold would be to take the highest value for a single L3 spiked into 100 heads (30.84) and add 3 standard deviations to that to establish a conservative cutoff of 33.2. This cutoff would be conservative, intended to miss as few L3-containing positive samples as possible. Thus, we propose that a C_q value of 33.2 should be considered as a cutoff to discriminate between samples called “positive” and those called “negative”. In other words, any sample with a C_q value less than or equal to 33.2 would be considered positive for the presence of at least one L3-staged larva, while any value greater than 33.2 would be considered negative for the presence of at least 1 L3-staged larva (despite being positive for the presence of *O. volvulus* DNA).

Target 9: Determining OvND5 qPCR assay efficiency. Using the size of the OvND5 amplicon to estimate the number of copies of OvND5 in successive 10-fold serial dilutions, a linear curve with an R^2 value of 0.988 was constructed. Linearity was generated by plotting the log transformation of estimated copy numbers. The slope of the line (-3.4281) was used to calculate an assay efficiency of 95.75% and an amplification factor of 1.96 ([Fig 2](#)).

Target 10: Comparing the cost of the OvND5 qPCR assay and the O150 PCR-ELISA. The cost of the OvND5 qPCR assay and the O150 PCR-ELISA assay were estimated based on the inclusion of reagent/supply and labor costs. When reagents, reaction volumes, and labor costs are all included, the cost of the OvND5 assay, per pool tested, is somewhat less than that of the per-pool cost of the O150 PCR-ELISA (see [Table 10](#)).

Discussion

The global elimination of onchocerciasis represents a massive technical and political challenge involving many governments, agencies, partners, and countries [[44–48](#)]. Defining success in the elimination of onchocerciasis transmission is based, in part, on assessing the absence of

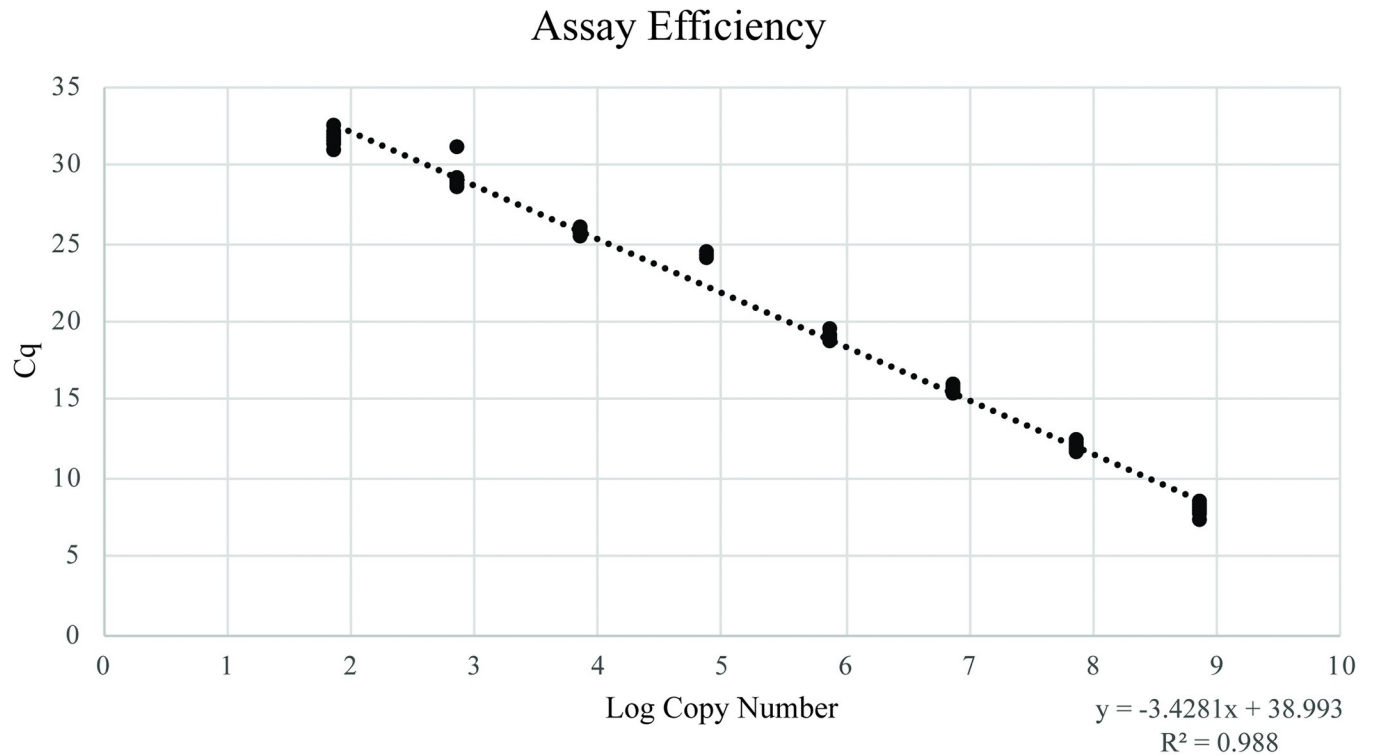


Fig 2. Calculation of assay efficiency. To determine assay efficiency, 10-fold serial dilutions of the OvND5 amplicon were prepared. All dilutions, ranging in concentration from 1ng/μl to 1ag/μl were analyzed in 11 replicate reactions. Mean Cq values and standard deviations were calculated for each concentration of amplicon template (y axis) and these values were plotted against log transformed estimates of copy number for each concentration (x-axis). A slope was then plotted, and reaction efficiency and amplification factor were determined. Estimates of copy number were calculated using the size of the OvND5 amplicon, DNA molecular weight, and the concentration of DNA added.

<https://doi.org/10.1371/journal.pntd.0011815.g002>

parasites in the heads of the transmitting *Simulium* spp. blackflies. Originally, this assessment involved the laborious, and less sensitive, manual dissection of the flies—a technique that was time-consuming and required specific parasitological expertise [27]. Since the infectious L3 stage of the parasites migrates to the heads of the fly prior to transmission to a human host, molecular techniques were developed to ascertain the presence/absence of parasites in the heads of blackflies. The original PCR-ELISA technique based on detecting the O150 repeat found in *O. volvulus* and other *Onchocerca* species was an important advance in vector screening [21]. This method has provided a great deal of information essential for evaluating the progress of onchocerciasis elimination programs, and the success of many such programs would not have been possible without this important tool.

Table 10. Cost comparison between the OvND5 qPCR assay and the O150 PCR-ELISA assay.

	O150 PCR-ELISA	OvND5 qPCR
Reagents & Supplies: cost per pool	\$7.10	\$8.34
Labor (person-hours/plate)	18 hours	4.2 hours
Cost (person-hours per pool)	\$1.80	\$0.40
Total Cost Per Pool	\$8.90	\$8.74

Assays were compared based on cost per pool of flies, building in supply and labor costs (estimated at \$9.00 US per hour). It should be noted that the OvND5 qPCR has many fewer steps and is less labor intensive than the O150 PCR-ELISA (18 hours vs 4.2 hours).

<https://doi.org/10.1371/journal.pntd.0011815.t010>

The effective programmatic use of molecular assays requires the presence of appropriately equipped laboratories and trained technical staff capable of processing large numbers of field samples in a timely fashion. Collection of accurate data on the status of infection in an endemic area is key to critical managerial decisions that national programs must make, and this is especially relevant as their CDTI/MDA efforts reach the point of requiring a decision regarding whether to stop treatment or continue with further MDA. The approach to making these important decisions is currently based on screening of blackfly heads by PCR-ELISA, supported by serology that is limited by suboptimal techniques for identifying the Ov16 antibody in children who were born following the onset of MDA. Given the absence to date of any optimal point-of-collection NAAT diagnostic for screening blackfly heads (which arguably would be preferred), it has been necessary to utilize the O150 PCR-ELISA assay in established, technically capable laboratories for programmatic decision making [49]. While efforts have been made to support laboratories across Africa and Yemen to respond to the ever-escalating number of field samples that must be tested, it is clear that streamlining and reducing the cost of the molecular assay is essential to ensuring the future success of elimination programs. In addition, as positivity rates in vectors decrease and national programs move closer toward stopping treatment, the sensitivity and specificity of the assays used to screen pools of blackflies becomes more critical in demonstrating the successful interruption of transmission. Thus, the goal of the present study was to design a qPCR assay with the characteristics of shorter testing time, reduced cost, improved specificity, and reduced chances of PCR contamination.

In the first part of this study (Targets 1, 2, and 3), we found that two new O150 based qPCR assays (NIH O150 and SC O150) and the OvND5 assay were all excellent at detecting picogram quantities of purified *O. volvulus* genomic DNA as well as picogram quantities of *O. volvulus* gDNA added to pools of 100 blackfly heads. While all three qPCR assays were very sensitive, the OvND5 assay had the advantage of having improved specificity (i.e. no detection of *O. ochengi*).

In the second part of the study (Targets 4, 5, and 6), we focused on finding a solution for a major practical issue associated with carrying out qPCR assays in endemic countries; namely, the high cost of using reagents that must be shipped and stored at -20°C (or colder). Shipment delays in customs, freezer breakdowns, or erratic power availability in endemic laboratories are all problems that can result in the loss of expensive reagents, and arguably even more critically, significant delays in operations while waiting for replacement reagents to arrive. The availability of new shelf-stable polymerases and reagents that can be shipped at room temperature has now provided an opportunity to reduce shipping and storage costs associated with PCR assays, to eliminate failure-based waste, and to reduce critical time delays. Thus, for these studies, we evaluated six different DNA polymerases and qPCR master mixes that can be shipped and stored at room temperature. While all of these qPCR polymerases/master mixes performed well, by far the easiest to use was HFP (HOT FIREPol Probe qPCR Mix Plus produced by Solis BioDyne). This mix was easiest to use because it comes in a ready-to-use liquid form with dNTPs, requiring no manipulation (lyophilization) or resuspension in buffer. All other polymerases/mixes tested required such procedures. The HFP master mix is also stable when stored at room temperature. In our hands, this master mix was just as effective after six months of storage at room temperature as it was when first received from the manufacturer. Not having to lyophilize reagents means less opportunity to introduce inconsistencies which are often observed with lyophilized products. The elimination of cold shipment and storage needs also represents a large cost-savings. When the reagents arrive at their destination, cold storage is still recommended, but the stability of the HFP polymerase/master mix means there is little concern should a freezer fail or power interruption occur. The results of this phase of the study also demonstrated that the OvND5 assay exhibited improved sensitivity compared to

the O150 assays when using HFP on pools of 100 blackfly heads with a single L3 added. This improved sensitivity was likely the result of superior inhibitor-resistance of the OvND5 assay when coupled with the HFP master mix.

Of note, we recognize the increased analytical sensitivity of the NIH O150 assay based on the LOD experiments, and our data demonstrate Cq values for the OvND5 assay that were consistently higher than the corresponding Cq values for the NIH O150 when testing the same set of samples. When we replicated near real-world conditions (20 pools of flies spiked with a single L3 larva) the NIH O150 assay underperformed in comparison to the OvND5, with a higher mean Cq value and an increased standard deviation (NIH O150 mean = 30.14, SD = 1.3; OvND5 mean = 29.04, SD 0.75). A higher rate of false negative results was also seen using the NIH O150 assay, and further dilution of the samples did not improve the results (S3 Table). For these reasons, as clinical performance is ultimately more relevant than analytical results, we selected the OvND5 assay as our recommended diagnostic option.

Finally, in the third part of the study (Targets 7, 8, and 9), the original O150 PCR-ELISA assay, the NIH O150 assay and the OvND5 assay were comparatively tested against DNA extracts from blackfly pools collected as part of an earlier study in Cameroon [5]. In this study, a LAMP assay and a different qPCR assay (OvActin qPCR) were used to detect the presence or absence of *O. volvulus* DNA in the samples. The results of this comparison showed that the OvND5 and the NIH O150 assays using HFP were in near-perfect agreement, while the LAMP and OvActin assays produced considerably fewer positive results. Of note, all of the positive results detected by the original O150 PCR-ELISA, the O150 LAMP and the OvActin assays, were detected by the OvND5 and the NIH O150 qPCR assays. In light of the aforementioned performance characteristics and given the strong benefits of utilizing an ambient temperature-stable polymerase, we believe that the OvND5 assay using the HFP polymerase/master mix provides the ideal qPCR assay for detecting *O. volvulus* in blackflies. Its sensitivity, species-specificity, cost effectiveness, and logistical advantages make it superior to all other assays tested.

Using the data collected from 19 out of 20 pools of 100 blackfly heads each spiked with a single L3 larva and tested by qPCR in triplicate, an effort was made to determine a threshold for biologically relevant positivity using the OvND5 assay. Selecting the ideal cutoff value for such positives in any molecular assay is difficult, and qPCR assays are no exception. Some labs identify any Cq value below 40 as a positive, while others use 38 as a cutoff. While we believe that any positive result is indicative of the presence of *O. volvulus* target DNA, we proposed consideration for a cutoff Cq value of 33.2 because this is 3 standard deviations above the highest Cq obtained in our spiking experiments containing many replicate pools of 100 blackfly heads spiked with a single L3 larva. Such pools theoretically represent the minimum worm burden required for a sample to represent an infection risk. Since the standard deviation was relatively low (0.79) this meant that 2.37 was added to 30.84 to give a Cq cutoff of 33.2. As work goes forward and additional test results become available, this cutoff value should continue to be evaluated and reconsidered and such evaluation will be particularly important as testing expands to new laboratories utilizing different qPCR instruments.

Additional tests on endemic blackfly vectors that are the species most likely to transmit onchocerciasis will help to evaluate the extraction methods and resistance of the assay to PCR inhibitors. One of the 20 pools failed to amplify, even with additional dilutions of the sample (S3 Table). It's not clear whether this result is due to inhibition, error, or some other factor. Future experiments to replicate the result would help to elucidate this.

To assess the implications of assay choice on study expense and logistical difficulty, the relative cost and complexity of the OvND5 qPCR assay and the O150 PCR-ELISA were compared. Although improvements to the O150 PCR-ELISA have resulted in the utilization of lyophilized

reagents, the assay is still marginally more expensive due to the higher number of person-hours required to complete the more complex protocol. The OvND5 assay has fewer steps, takes less time to complete, and has reduced contamination risks because it eliminates the handling of post-PCR products as it is conducted in a sealed 96 well plate. This assay also demonstrated improved sensitivity when compared with the O150 PCR-ELISA.

In this multi-laboratory collaborative study, we have compared different qPCR targets in *O. volvulus*, different primers and probes, and different PCR polymerase/master mixes in order to develop an agreed upon protocol for screening pooled blackflies that is faster, more streamlined, more sensitive, more species-specific and more cost-effective than the currently available O150 PCR-ELISA assay. The OvND5 qPCR assay, with all reagents delivered to the testing laboratory at ambient temperature, will minimize logistical challenges while avoiding the high costs of cold chain shipping as well as the potentially expensive losses that result when logistics-related delays occur. In addition, a qPCR assay performed in a sealed plate has the advantage of greatly reducing the chances of sample-to-sample contamination and general laboratory contamination with concentrated PCR amplification products. This optimized and standardized OvND5 qPCR protocol for the monitoring of *O. volvulus* in vector blackflies in endemic countries will facilitate the more-timely processing of samples, more reliable results, and will reduce delays in programmatic decision-making. With standardized approaches and stable reagents available, the network of laboratories supporting molecular xenomonitoring efforts for onchocerciasis can be enlarged, providing governments and agencies responsible for elimination programs with the reliable data needed to aid in stop-treatment decision-making and post-MDA surveillance.

Supporting information

S1 Methods. Detailed protocols for DNA isolation from pools of blackfly heads.
(PDF)

S2 Methods. Detailed protocol for preparing and testing shelf-stable qPCR reagents on genomic *O. volvulus* gDNA.
(PDF)

S1 Table. Cq values confirmatory assay to test for species specificity of the *O. ochengi*-specific assays: OoND5 and OoR1 and OoR5.
(PDF)

S2 Table. Comparison of results obtained for detection of *O. volvulus* in 129 Cameroon samples.
(PDF)

S3 Table. Comparison of OvND5 and NIH O150 qPCR performance in detecting one *O. volvulus* L3 larva spiked into a pool of 100 *Simulium vittatum* blackfly heads at dilutions of 1:20 and 1:50.
(PDF)

S1 Data. Efficiency Assay Cq values, calculations, plot and data.
(XLSX)

Acknowledgments

We would like to acknowledge Nancy Tricoche from the New York Blood Center for preparing the *O. volvulus* gDNA and for handling the *O. volvulus* cryopreserved L3 larva used in this study. The *Simulium vittatum* cytospecies IS-7 were provided by the University of Georgia

Black Fly Research and Resource Center. This center is supported by NIH Task Order C-08, Contract No. HHSN2722017000351, Task Order No. 75N93020F00002.

Author Contributions

Conceptualization: Nils Pilotte, Peter U. Fischer, Sara Lustigman, Thomas B. Nutman, Thomas R. Unnasch, Patrick J. Lammie, Eric Ottesen, Charles Mackenzie, Steven A. Williams.

Formal analysis: Mary Doherty, Jessica R. Grant, Nils Pilotte, Sasisekhar Bennuru, Kerstin Fischer, Peter U. Fischer, Kenneth Pfarr, Steven A. Williams.

Funding acquisition: Patrick J. Lammie, Eric Ottesen, Charles Mackenzie, Steven A. Williams.

Investigation: Mary Doherty, Jessica R. Grant, Sasisekhar Bennuru, Kerstin Fischer, Sara Lustigman, Kenneth Pfarr, Hassan K. Hassan.

Methodology: Mary Doherty, Jessica R. Grant, Nils Pilotte, Sasisekhar Bennuru, Kerstin Fischer, Sara Lustigman, Kenneth Pfarr, Hassan K. Hassan.

Resources: Peter U. Fischer, Sara Lustigman, Thomas B. Nutman, Kenneth Pfarr, Achim Hoerauf, Thomas R. Unnasch, Hassan K. Hassan, Samuel Wanji, Steven A. Williams.

Visualization: Mary Doherty, Jessica R. Grant, Steven A. Williams.

Writing – original draft: Mary Doherty, Jessica R. Grant, Nils Pilotte, Sasisekhar Bennuru, Kerstin Fischer, Peter U. Fischer, Sara Lustigman, Thomas B. Nutman, Kenneth Pfarr, Achim Hoerauf, Thomas R. Unnasch, Hassan K. Hassan, Samuel Wanji, Patrick J. Lammie, Eric Ottesen, Charles Mackenzie, Steven A. Williams.

Writing – review & editing: Mary Doherty, Nils Pilotte, Sasisekhar Bennuru, Kerstin Fischer, Peter U. Fischer, Sara Lustigman, Thomas B. Nutman, Kenneth Pfarr, Achim Hoerauf, Thomas R. Unnasch, Hassan K. Hassan, Samuel Wanji, Patrick J. Lammie, Eric Ottesen, Charles Mackenzie, Steven A. Williams.

References

1. Brattig NW, Cheke RA, Garms R. Onchocerciasis (river blindness)—more than a century of research and control. *Acta Trop.* 2021 Jun; 218:105677. <https://doi.org/10.1016/j.actatropica.2020.105677> PMID: 32857984
2. Mackenzie CD, Homeida MM, Hopkins AD, Lawrence JC. Elimination of onchocerciasis from Africa: possible? *Trends Parasitol.* 2012 Jan 1; 28(1):16–22. <https://doi.org/10.1016/j.pt.2011.10.003> PMID: 22079526
3. Siewe Fodjo JN, Vieri MK, Ngarka L, Njamnshi WY, Nfor LN, Mengnjo MK, et al. ‘Slash and clear’ vector control for onchocerciasis elimination and epilepsy prevention: a protocol of a cluster randomised trial in Cameroonian villages. *BMJ Open.* 2021 Sep; 11(9):e050341. <https://doi.org/10.1136/bmjopen-2021-050341> PMID: 34475178
4. Raimon S, Lakwo TL, Sebit WJ, Siewe Fodjo JN, Alinda P, Carter JY, et al. “Slash and Clear”, a Community-Based Vector Control Method to Reduce Onchocerciasis Transmission by *Simulium sirbanum* in Maridi, South Sudan: A Prospective Study. *Pathogens.* 2021 Oct 15; 10(10):1329. <https://doi.org/10.3390/pathogens10101329> PMID: 34684277
5. Abong RA, Amambo GN, Hamid AA, Enow BA, Beng AA, Nietcho FN, et al. The Mbam drainage system and onchocerciasis transmission post ivermectin mass drug administration (MDA) campaign, Cameroon. *PLoS Negl Trop Dis.* 2021 Jan 19; 15(1):e0008926. <https://doi.org/10.1371/journal.pntd.0008926> PMID: 33465080
6. Trpis M, Wergin WP, Murphy ChA. Development of *Onchocerca volvulus* (Filarioidea: Onchocercidae) in the West African black fly *Simulium yahense* (Diptera: Simuliidae) in Liberia. *J. of Parasitology* 2001 Dec; 87(6):1265–72.

7. Little MP, Basáñez M, Breitling LPh, Boatin BA, Alley ES. Incidence of Blindness during the Onchocerciasis Control Programme in Western Africa, 1971–2002. *J Infect Dis.* 2004 May 15; 189(10):1932–41. <https://doi.org/10.1086/383326> PMID: 15122532
8. Dusabimana A, Siewe Fodjo JN, Ndahura MM, Mmbando BP, Jada SR, Boven A, et al. Surveillance for Onchocerciasis-Associated Epilepsy and OV16 IgG4 Testing of Children 6–10 Years Old Should Be Used to Identify Areas Where Onchocerciasis Elimination Programs Need Strengthening. *Pathogens.* 2022 Mar; 11(3):281. <https://doi.org/10.3390/pathogens11030281> PMID: 35335605
9. Chesnais CB, Nana-Djeunga HC, Njamnshi AK, Lenou-Nanga CG, Boule C, Zoung-Kanyi Bissek A-C, et al. The temporal relationship between onchocerciasis and epilepsy: population-based cohort study. *The Lancet* 2018 Nov; 18(11):1278–86.
10. Chesnais CB, Bizet C, Campillo JT, Njamnshi WY, Bopda J, Nwane P, et al. A second population-based cohort study in Cameroon confirms the temporal relationship between onchocerciasis and epilepsy. *Open Forum Infectious Diseases* 2020 June; 7(6):ofaa206 <https://doi.org/10.1093/ofid/ofaa206> PMID: 32587878
11. Colebunders R, Mandro M, Mokili JL, Mucinya G, Mambandu G, Pfarr K, et al. Risk factors for epilepsy in Bas-Uele Province, Democratic Republic of the Congo: a case-control study. *Int J Infect Dis.* 2016 Aug; 49:1–8.
12. Colebunders R, Njamnshi AK, Menon S, Newton CR, Hotterbeekx A, Preux PM, et al. *Onchocerca volvulus* and epilepsy: A comprehensive review using the Bradford Hill criteria for causation. *PLoS Negl Trop Dis.* 2021 Jan 7; 15(1):e0008965. <https://doi.org/10.1371/journal.pntd.0008965> PMID: 33411705
13. Navarro M, Camprubí D, Requena-Méndez A, Buonfrate D, Giorli G, Kamgno J, et al. Safety of high-dose ivermectin: a systematic review and meta-analysis. *J Antimicrob Chemother.* 2020 Apr 1; 75(4):827–34. <https://doi.org/10.1093/jac/dkz524> PMID: 31960060
14. Diawara L, Traoré MO, Badji A, Bissan Y, Doumbia K, Goita SF, et al. Feasibility of Onchocerciasis Elimination with Ivermectin Treatment in Endemic Foci in Africa: First Evidence from Studies in Mali and Senegal. *PLoS Negl Trop Dis.* 2009 Jul 21; 3(7):e497. <https://doi.org/10.1371/journal.pntd.0000497> PMID: 19621091
15. Guevara AG, Vieira JC, Lilley BG, López A, Vieira N, Rumbea J, et al. Entomological evaluation by pool screen polymerase chain reaction of *Onchocerca volvulus* transmission in Ecuador following mass Mectizan distribution. *Am J Trop Med Hyg.* 2003 Feb 1; 68(2):222–7. PMID: 12641415
16. Hendy A, Krüger A, Pfarr K, De Witte J, Kibweja A, Mwingira U, et al. The blackfly vectors and transmission of *Onchocerca volvulus* in Mahenge, south eastern Tanzania. *Acta Trop.* 2018 May 1; 181:50–9.
17. Kamga GR, Dissak-Delon FN, Nana-Djeunga HC, Biholong BD, Mbigha-Ghogomu S, Souopgui J, et al. Still mesoendemic onchocerciasis in two Cameroonian community-directed treatment with ivermectin projects despite more than 15 years of mass treatment. *Parasit Vectors.* 2016 Dec; 9(1):1–12. <https://doi.org/10.1186/s13071-016-1868-8> PMID: 27842567
18. Traore MO, Sarr MD, Badji A, Bissan Y, Diawara L, Doumbia K, et al. Proof-of-Principle of Onchocerciasis Elimination with Ivermectin Treatment in Endemic Foci in Africa: Final Results of a Study in Mali and Senegal. *PLoS Negl Trop Dis.* 2012 Sep 13; 6(9):e1825. <https://doi.org/10.1371/journal.pntd.0001825> PMID: 23029586
19. Whitworth J a. G, Downham MD, Lahai G, Maude GH. A community trial of ivermectin for onchocerciasis in Sierra Leone: compliance and parasitological profiles after three and a half years of intervention. *Trop Med Int Health.* 1996; 1(1):52–8. <https://doi.org/10.1046/j.1365-3156.1996.d01-3.x> PMID: 8673823
20. Noma M, Zouré HGM, Tekle AH, Enyong PA, Nwoke BEB, Remme JHF. The geographic distribution of onchocerciasis in the 20 participating countries of the African Programme for Onchocerciasis Control: (1) priority areas for ivermectin treatment. *Parasites Vectors* 2014 Jul; 7(325) <https://doi.org/10.1186/1756-3305-7-325> PMID: 25053266
21. Meredith SEO, Lando G, Gbakima AA, Zimmerman PA, Unnasch TR. *Onchocerca volvulus*: Application of the polymerase chain reaction to identification and strain differentiation of the parasite. *Exp Parasitol.* 1991 Oct 1; 73(3):335–44. [https://doi.org/10.1016/0014-4894\(91\)90105-6](https://doi.org/10.1016/0014-4894(91)90105-6) PMID: 1915748
22. Onchocerciasis (river blindness) [Internet]. [cited 2023 Jan 19]. Available from: <https://www.who.int/news-room/fact-sheets/detail/onchocerciasis>
23. Alhassan A, Makepeace BL, LaCourse EJ, Osei-Atweneboana MY, Carlow CKS. A Simple Isothermal DNA Amplification Method to Screen Black Flies for *Onchocerca volvulus* Infection. *PLOS ONE.* 2014 Oct 9; 9(10):e108927. <https://doi.org/10.1371/journal.pone.0108927> PMID: 25299656
24. Verocai GG, Hassan HK, Lakwo T, Habomugisha P, Katarbarwa MN, Begumisa S, et al. Molecular Identification of *Onchocerca* spp. Larvae in *Simulium damnosum* sensu lato Collected in Northern Uganda. *Am J Trop Med Hyg.* 2017 Dec 6; 97(6):1843–5. <https://doi.org/10.4269/ajtmh.17-0525> PMID: 29187277

25. Bennuru S, O'Connell EM, Drame PM, Nutman TB. Mining Filarial Genomes for Diagnostic and Therapeutic Targets. *Trends Parasitol.* 2018 Jan 1; 34(1):80–90. <https://doi.org/10.1016/j.pt.2017.09.003> PMID: 29031509
26. Hendy A, Krit M, Pfarr K, Laemmer C, De Witte J, Nwane P, et al. *Onchocerca volvulus* transmission in the Mbam valley of Cameroon following 16 years of annual community-directed treatment with ivermectin, and the description of a new cytotype of *Simulium squamosum*. *Parasit Vectors.* 2021 Dec; 14(1):563.
27. Rodríguez-Pérez MA, Danis-Lozano R, Rodríguez MH, Unnasch TR, Bradley JE. Detection of *Onchocerca volvulus* infection in *Simulium ochraceum* sensu lato: comparison of a PCR assay and fly dissection in a Mexican hypoendemic community. *Parasitology.* 1999 Dec; 119(6):613–9.
28. Abong RA, Amambo GN, Chounna Ndongmo PW, Njouendou AJ, Ritter M, Beng AA, et al. Differential susceptibility of *Onchocerca volvulus* microfilaria to ivermectin in two areas of contrasting history of mass drug administration in Cameroon: relevance of microscopy and molecular techniques for the monitoring of skin microfilarial repopulation within six months of direct observed treatment. *BMC Infect Dis.* 2020 Dec; 20(1):1–17. <https://doi.org/10.1186/s12879-020-05444-2> PMID: 33008333
29. Lloyd MM, Gilbert R, Taha NT, Weil GJ, Meite A, Kouakou IMM, et al. Conventional parasitology and DNA-based diagnostic methods for onchocerciasis elimination programmes. *Acta Trop.* 2015 Jun 1; 146:114–8. <https://doi.org/10.1016/j.actatropica.2015.03.019> PMID: 25818324
30. Zaky WI, Tomaino FR, Pilotte N, Laney SJ, Williams SA. Backpack PCR: A point-of-collection diagnostic platform for the rapid detection of *Brugia* parasites in mosquitoes. McCarthy JS, editor. *PLoS Negl Trop Dis.* 2018 Nov 21; 12(11):e0006962.
31. Naidoo D, Ihekweazu C. Nigeria's efforts to strengthen laboratory diagnostics—Why access to reliable and affordable diagnostics is key to building resilient laboratory systems. *Afr J Lab Med.* 2020; 9(2):1–5. <https://doi.org/10.4102/ajlm.v9i2.1019> PMID: 32934913
32. Okeke IN, Ihekweazu C. The importance of molecular diagnostics for infectious diseases in low-resource settings. *Nat Rev Microbiol.* 2021 Sep; 19(9):547–8. <https://doi.org/10.1038/s41579-021-00598-5> PMID: 34183821
33. Bandawe G, Chitenje M, Bitiliyu-Bangoh J, Kampira E. Approaches to Deployment of Molecular Testing for SARS-CoV-2 in Resource-Limited Settings. *Clin Lab Med.* 2022 Jun; 42(2):283–98. <https://doi.org/10.1016/j.cll.2022.02.008> PMID: 35636827
34. Okeke IN. Towards a fiercely urgent expansion of laboratory medicine in Africa. *Afr J Lab Med* [Internet]. 2021 Dec 17 [cited 2023 Apr 20]; 10(1). Available from: <https://ajlmonline.org/index.php/ajlm/article/view/1785> <https://doi.org/10.4102/ajlm.v10i1.1785> PMID: 34966663
35. Belman S, Saha S, Beale MA. SARS-CoV-2 genomics as a springboard for future disease mitigation in LMICs. *Nat Rev Microbiol.* 2022 Jan; 20(1):3–3. <https://doi.org/10.1038/s41579-021-00664-y> PMID: 34799703
36. Qaqish B, Sallam M, Al-Khateeb M, Reisdorf E, Mahafzah A. Assessment of COVID-19 Molecular Testing Capacity in Jordan: A Cross-Sectional Study at the Country Level. *Diagnostics.* 2022 Apr; 12(4):909. <https://doi.org/10.3390/diagnostics12040909> PMID: 35453957
37. Saha S, Pai M. Can COVID-19 innovations and systems help low- and middle-income countries to reimagine healthcare delivery? *Med.* 2021 Apr 9; 2(4):369–73. <https://doi.org/10.1016/j.medj.2021.02.008> PMID: 33686383
38. Voronin D, Tricoche N, Jawahar S, Shlossman M, Bulman CA, Fischer C, et al. Development of a preliminary in vitro drug screening assay based on a newly established culturing system for pre-adult fifth-stage *Onchocerca volvulus* worms. *PLoS Negl Trop Dis.* 2019 Jan 17; 13(1):e0007108. <https://doi.org/10.1371/journal.pntd.0007108> PMID: 30653499
39. George PJ, Hess JA, Jain S, Patton JB, Zhan T, Tricoche N, et al. Antibody responses against the vaccine antigens Ov-103 and Ov-RAL-2 are associated with protective immunity to *Onchocerca volvulus* infection in both mice and humans. *PLoS Negl Trop Dis.* 2019 Sep 16; 13(9):e0007730. <https://doi.org/10.1371/journal.pntd.0007730> PMID: 31525197
40. Cotton JA, Bennuru S, Grote A, Harsha B, Tracey A, Beech R, et al. The genome of *Onchocerca volvulus*, agent of river blindness. *Nat Microbiol.* 2016 Nov 21; 2(2):1–12. <https://doi.org/10.1038/nmicrobiol.2016.216> PMID: 27869790
41. Bennuru S, Kodua F, Dahlstrom E, Nutman TB. Improved NAAT assay for the diagnosis of onchocerciasis and its use for detection of circulating cell free DNA [Internet]. medRxiv; 2023 [cited 2023 Nov 7]. p. 2023.09.13.23295358. Available from: <https://www.medrxiv.org/content/10.1101/2023.09.13.23295358v1>
42. Krueger A, Fischer P, Morales-Hojas R. Molecular phylogeny of the filaria genus *Onchocerca* with special emphasis on Afrotropical human and bovine parasites. *Acta Trop.* 2007 Jan 1; 101(1):1–14. <https://doi.org/10.1016/j.actatropica.2006.11.004> PMID: 17174932

43. Pilotte N, Maasch JRMA, Easton AV, Dahlstrom E, Nutman TB, Williams SA. Targeting a highly repeated germline DNA sequence for improved real-time PCR-based detection of *Ascaris* infection in human stool. *PLoS Negl Trop Dis*. 2019 Jul 22; 13(7):e0007593. <https://doi.org/10.1371/journal.pntd.0007593> PMID: 31329586
44. Wanji S, Kengne-Ouafo JA, Esum ME, Chounna PWN, Tendongfor N, Adzemye BF, et al. Situation analysis of parasitological and entomological indices of onchocerciasis transmission in three drainage basins of the rain forest of South West Cameroon after a decade of ivermectin treatment. *Parasit Vectors*. 2015 Dec; 8(1):202. <https://doi.org/10.1186/s13071-015-0817-2> PMID: 25886166
45. Njim T, Aminde LN. An appraisal of the neglected tropical diseases control program in Cameroon: the case of the national program against onchocerciasis. *BMC Public Health*. 2017 Dec; 17(1):103. <https://doi.org/10.1186/s12889-017-4037-x> PMID: 28109269
46. Wanji S, Kengne-Ouafo JA, Esum ME, Chounna PWN, Adzemye BF, Eyong JEE, et al. Relationship between oral declaration on adherence to ivermectin treatment and parasitological indicators of onchocerciasis in an area of persistent transmission despite a decade of mass drug administration in Cameroon. *Parasit Vectors*. 2015 Dec; 8(1):667.
47. Stolk WA, Blok DJ, Hamley JID, Cantey PT, de Vlas SJ, Walker M, et al. Scaling-Down Mass Ivermectin Treatment for Onchocerciasis Elimination: Modeling the Impact of the Geographical Unit for Decision Making. *Clin Infect Dis*. 2021 Jun 15; 72(Supplement_3):S165–71. <https://doi.org/10.1093/cid/ciab238> PMID: 33909070
48. Cromwell EA, Osborne JCP, Unnasch TR, Basáñez MG, Gass KM, Barbre KA, et al. Predicting the environmental suitability for onchocerciasis in Africa as an aid to elimination planning. *PLoS Negl Trop Dis*. 2021 Jul 28; 15(7):e0008824. <https://doi.org/10.1371/journal.pntd.0008824> PMID: 34319976
49. Unnasch TR, Golden A, Cama V, Cantey PT. Diagnostics for onchocerciasis in the era of elimination. *Int Health*. 2018 Mar 1; 10(suppl_1):i20–6. <https://doi.org/10.1093/inthealth/ihx047> PMID: 29471336