

Implications and Types of Artefacts in Oral Histopathology Tissue Processing

Authors: Harshitha M, Sowmya SV, Dominic Augustine

Background:

An artefact refers to any artificial structure or tissue alterations present on a prepared microscopic slide as a result of extraneous factors

Aim:

To prepare a comprehensive report of commonly occurring artefacts from the archival collection of pathology laboratory

Methodology:

- A retrospective study was done to identify the different artefacts by reviewing 1200 archival slides
- Photomicrography was done to study their morphology and correlation to parent tissue

Conclusion:

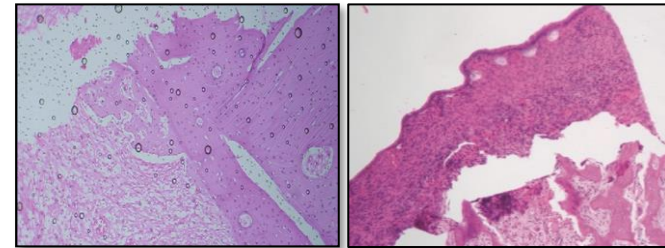
Sound knowledge about artefacts is necessary for surgeon and pathologists to identify and differentiate it from true pathological structures

Results:

Common artefacts were [A]excess mounting media (n=8), [B]forceps artefact (n=6), [C]starch artefact (n=5), [D]sterillium (n=3), [E]suture material (n=2) and [F]dust particles (n=1)

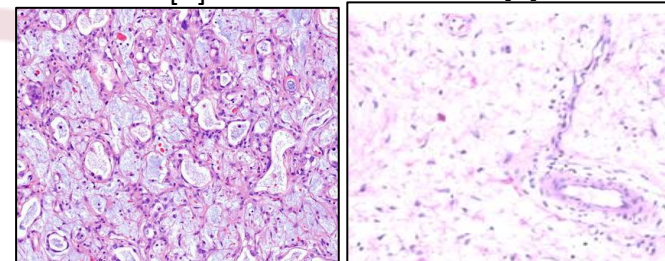
Clinical Significance:

This study provides with the information regarding the pathology that various artefacts mimics and the means to differentiate them



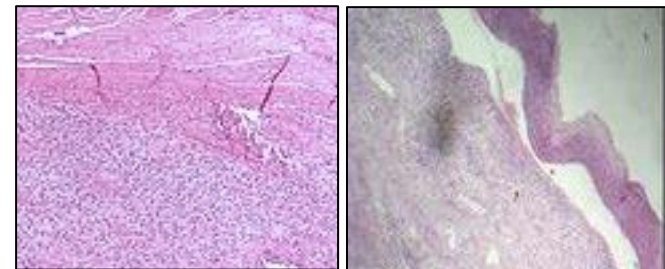
[A]

[B]



[C]

[D]



[E]

[F]

POSTER No. 198; South Jordan