

Supporting Information for

Volcanic diffuse volatile emissions tracked by plant responses detectable from space

Robert R. Bogue¹, Peter M. J. Douglas¹, Joshua B. Fisher², John Stix¹

¹McGill University, Department of Earth and Planetary Sciences, 3450 rue University, Montreal QC H3A OE8, Canada

²Schmid College of Science and Technology, Chapman University, 1 University Drive, Orange, CA, 92866, USA

Contents of this file

Figures S1 to S2

Additional Supporting Information (Files uploaded separately)

Tables S1 to S5

Introduction

Supplemental figures 1 and 2 are expanded versions of Figure 5 in the main text. Supplemental tables S1-S4 are the calculated statistics for each image used in the analysis in the main text for figures 3 and 4. Supplemental table S5 is a complete list of the dates of all Landsat images used in the analysis.

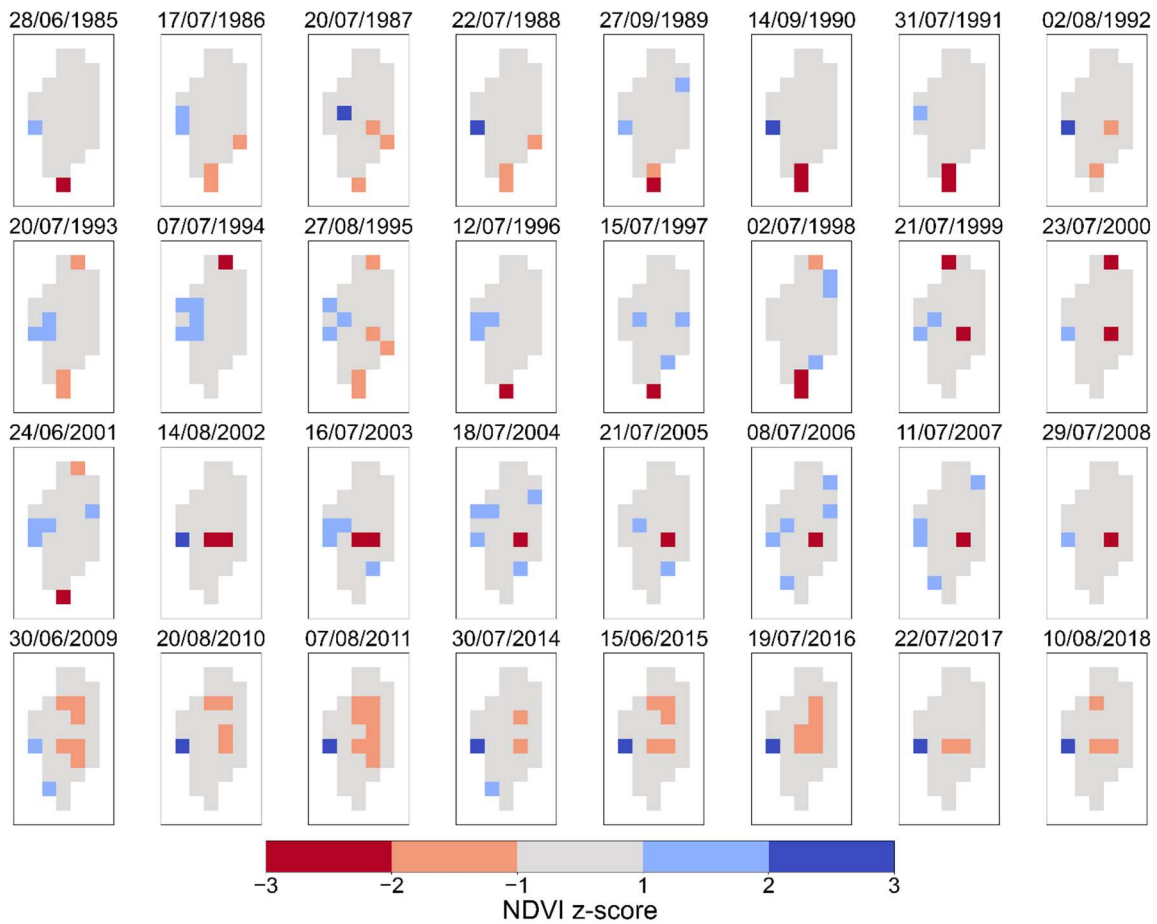


Figure S1. Expanded version of figure 5. Colored pixels indicate the location of the pixels with the values in the highest and lowest bins in a 10 bin histogram within the Tern Lake thermal area from selected images from 1985-2018. Each pixel is colored based on how

many standard deviations the NDVI value of that pixel is from the mean NDVI value for that image (z-score).

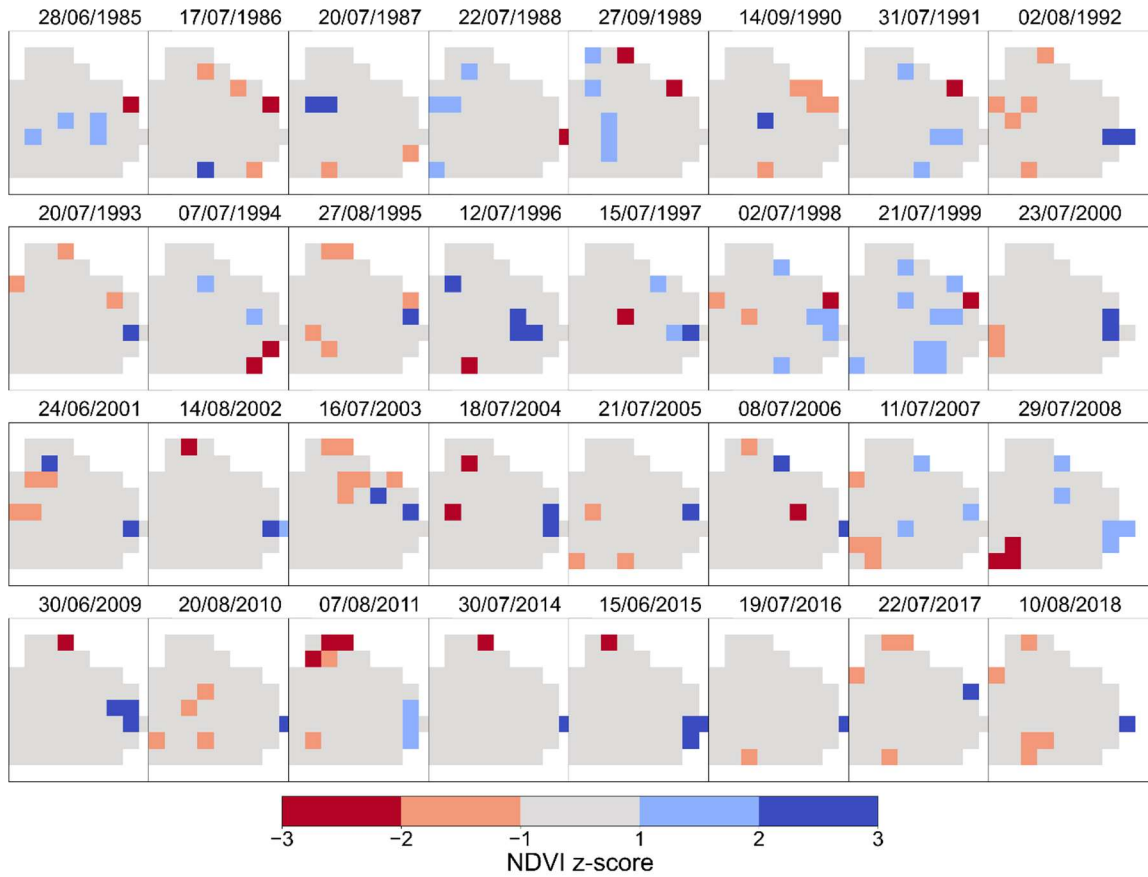


Figure S2. Location of highest and lowest values for the first background area through time. Colored pixels indicate the location of the pixels with the values in the highest and lowest bins in a 10 bin histogram within the Tern Lake thermal area from selected images from 1985-2018. Each pixel is colored based on how many standard deviations the NDVI value of that pixel is from the mean NDVI value for that image (z-score).