

University of Dundee

Images of Research

Alshaibi, Omar; Armstrong, Vicky; Brown, Katie; Hindley, Nicole; Johnston, Susie; Lermant, Agathe

DOI:
[10.20933/100001304](https://doi.org/10.20933/100001304)

Publication date:
2024

Licence:
CC BY-NC-ND

Document Version
Publisher's PDF, also known as Version of record

[Link to publication in Discovery Research Portal](#)

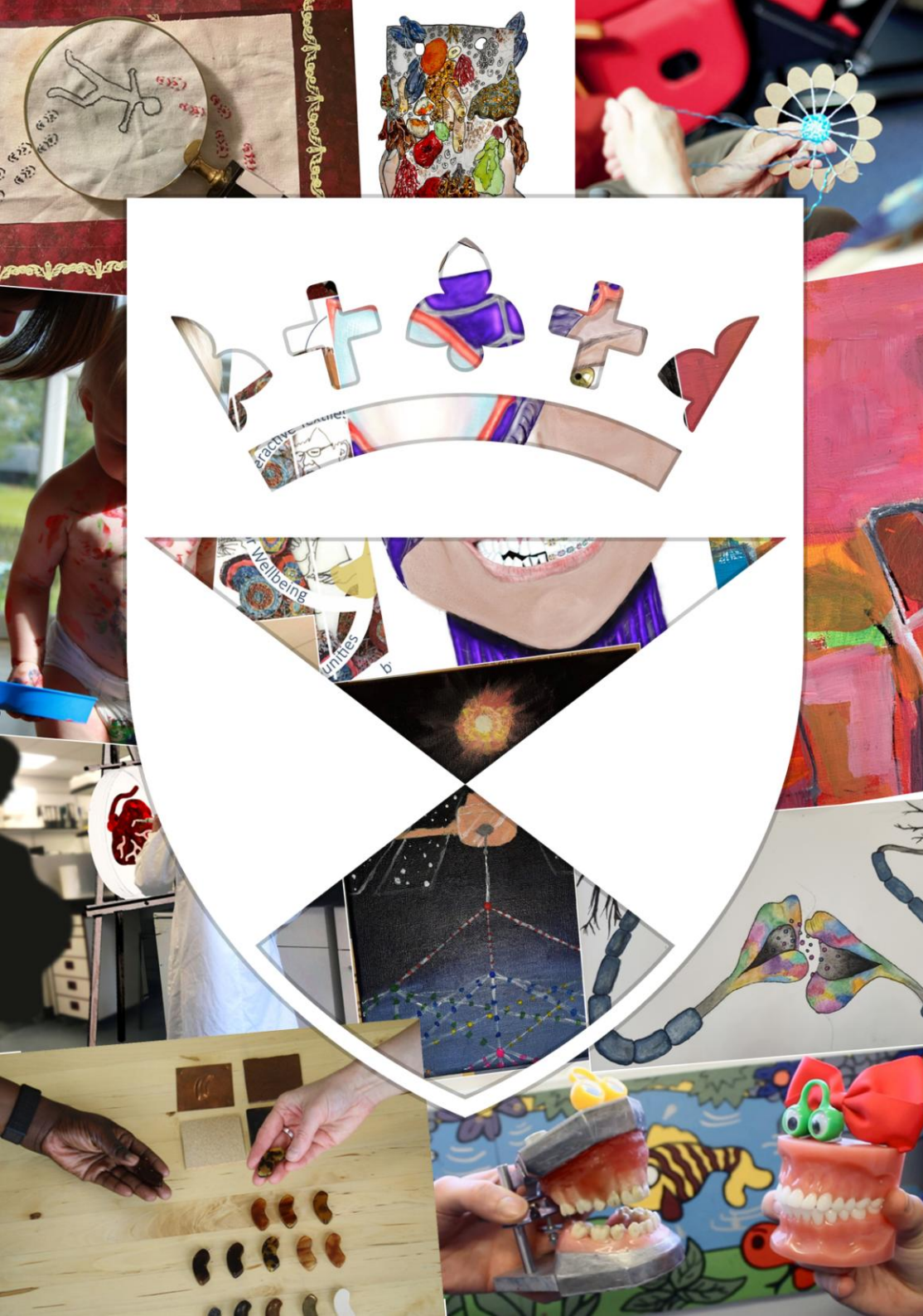
Citation for published version (APA):
Alshaibi, O., Armstrong, V., Brown, K., Hindley, N., Johnston, S., Lermant, A., Mills, E., Norman, D., Robertson, L., Schad, E., Oza, S. (Ed.), & Henderson, C. (2024, Mar). Images of Research: An Art Gallery and Puzzle Book. University of Dundee. <https://doi.org/10.20933/100001304>

General rights

Copyright and moral rights for the publications made accessible in Discovery Research Portal are retained by the authors and/or other copyright owners and it is a condition of accessing publications that users recognise and abide by the legal requirements associated with these rights.

Take down policy

If you believe that this document breaches copyright please contact us providing details, and we will remove access to the work immediately and investigate your claim.



Images of Research

An Art Gallery and Puzzle Book



University
of Dundee





University
of Dundee

Images of Research is an annual competition that challenges researchers to capture their work in a single image, alongside a short description. This competition has been run at the University of Dundee since 2020 and represents just a handful of the research projects being carried out by postgraduate researchers.

The competition celebrates our research and the many original ways it can be expressed. This collection showcases the winning entries, mixed with fun sketches and puzzles to complete.

Interactive Textiles for Wellbeing

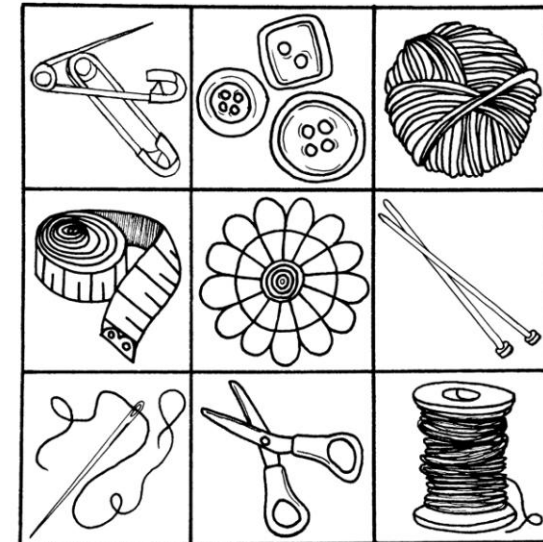
Lucy Robertson



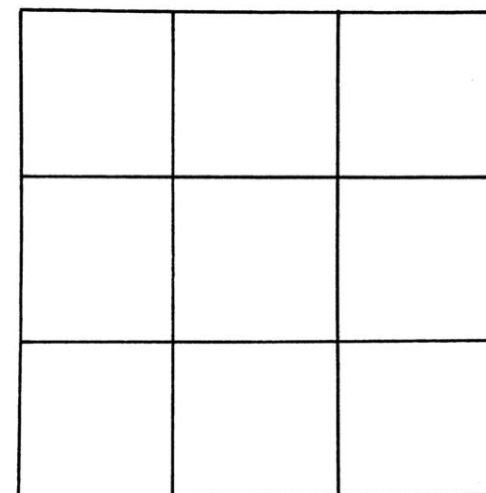
This PhD research brings together making, interaction, technology, and textiles to enable social connections, celebrate creativity and foster new relationships and experiences for those living with dementia and their communities. Using research through design and a person-centred approach this research explores the making and use of interactive textiles for wellbeing.

Memory Mystery!

Memorise all of the symbols in the grid and remember which position each symbol is located in...



... now, cover up the grid above, and try to remember where each symbol is located and fill in this blank grid:



Hearing Aid Futures

Katie Brown



What if we designed hearing aids in the same way we design the every day objects that fit comfortably into our lives? Not trying to hide, disguise or assimilate 'disability,' but somewhat radically, positioning 'disability' as being part of the fabric of everyday life. What hearing aids would you choose?

Hearing Ears!

Can you help these animals hear again by drawing their missing ears in the empty spaces?



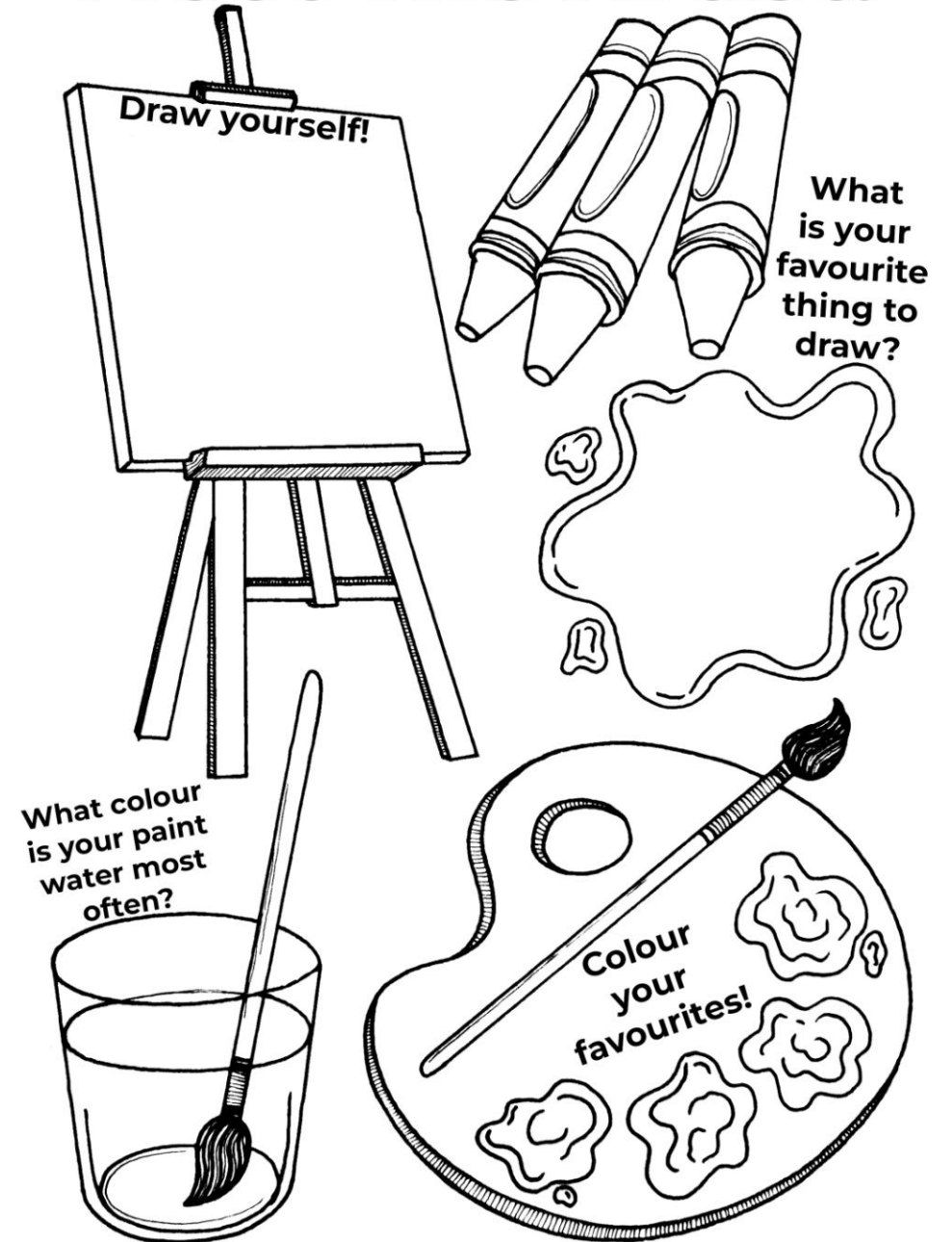
Don't forget to give your animal friends some colour!

Improving Infant wellbeing through 'Art at the Start' Vicky Armstrong



What happens when babies make art with their grown-up? They build emotional connections through shared, creative experience. They develop motor skills as they hold and manipulate tools. They learn new sensations and colours. They develop their sense of self as they see their marks have an impact on the world.

Meet The Artist!



What colour is your paint water most often?

What is your favourite thing to draw?

Colour your favourites!

Interactive Textiles for Wellbeing

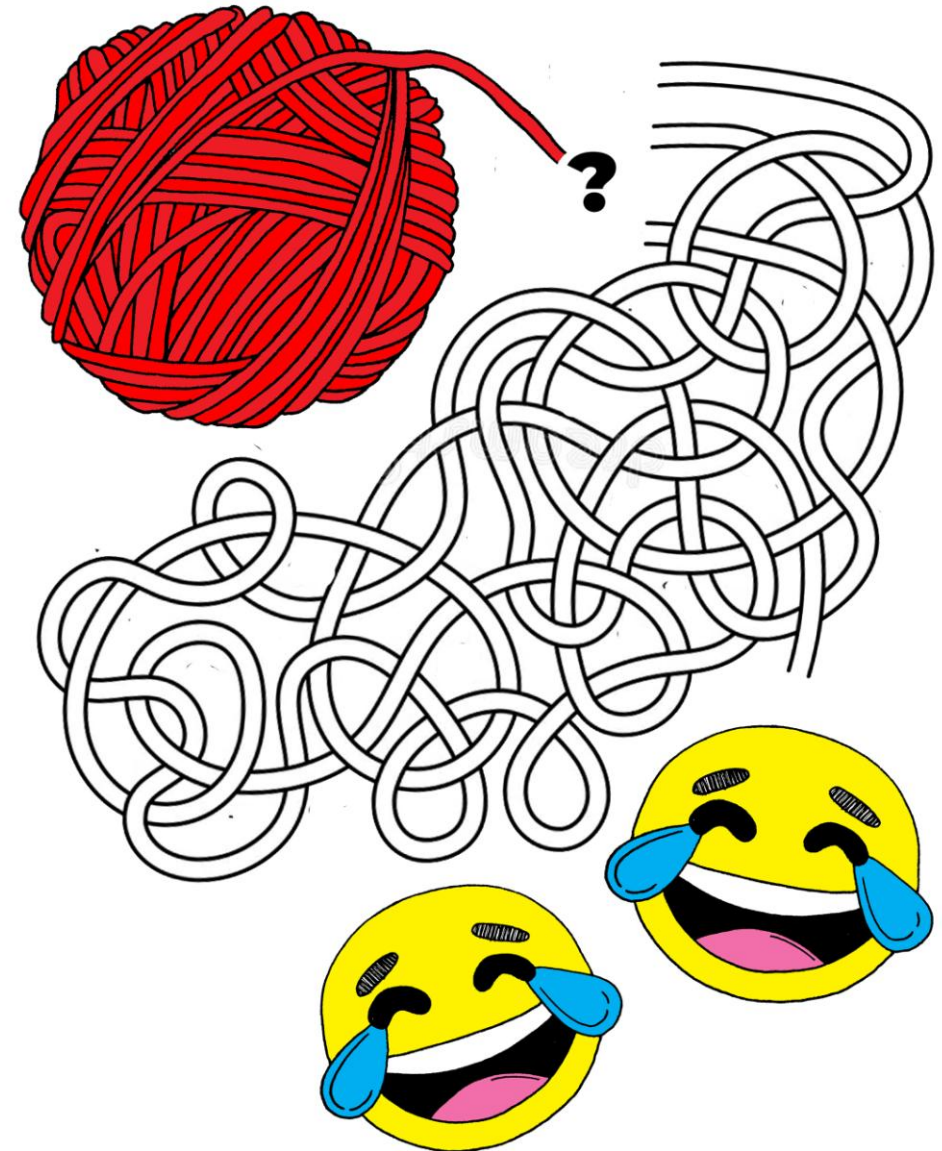
Lucy Robertson



I use portraits to maintain identity without compromising anonymity. Here I captured two participants weaving and laughing away. In this moment they reflected; 'laughter, that's what it's all about'. I decided to feature this moment as the thesis front cover, surrounded by other imagery of the research.

Woolly Maze!

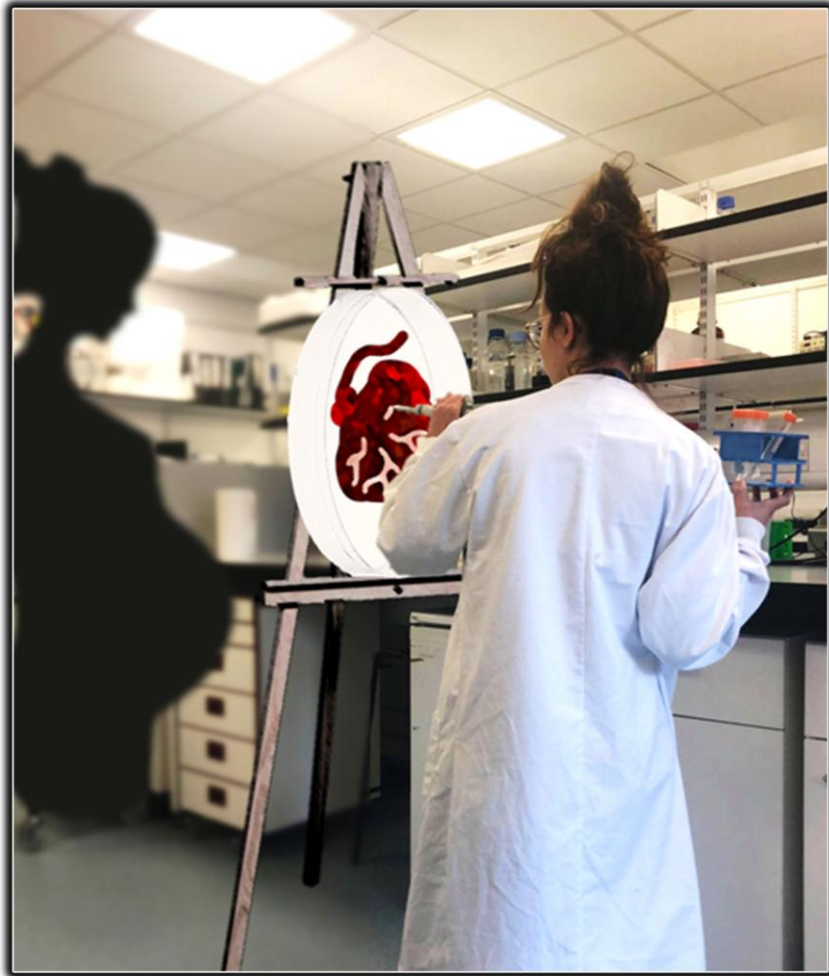
Can you find your way through the tangled wool ball?



Woohoo! You made it through! Now think about something really funny and have a good laugh!!

Portraying the Placenta to Unlock the Mysteries of Pregnancy

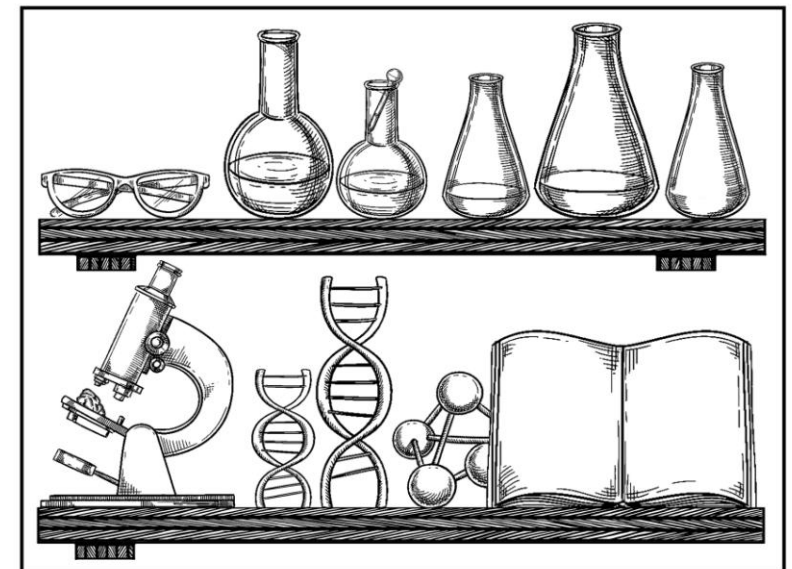
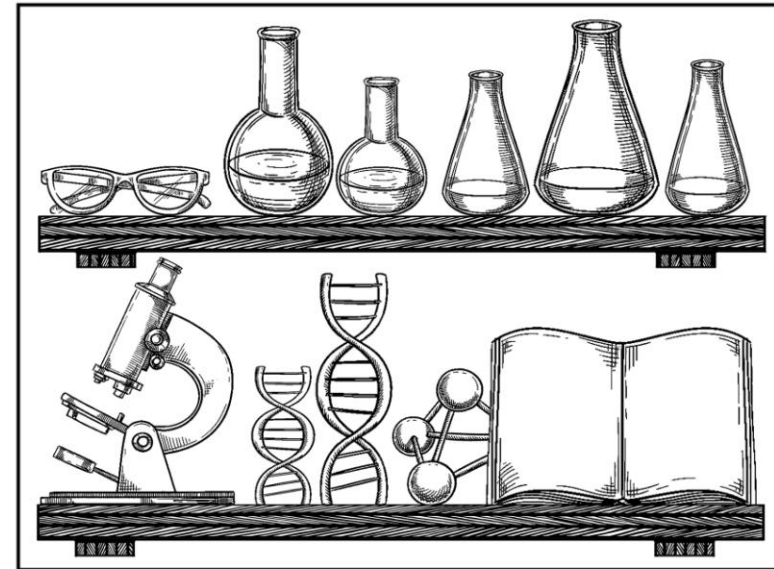
Agathe Lermant



The placenta is one of the most challenging organs to study, and yet it could well hold the keys to answering many unknowns around pregnancy. Like painters in their studio, I am recreating lifelike placenta features in the lab using cell models to boost our understanding of pregnancy complications.

Spot the Difference!

Can you spot the differences between these two images of lab equipment? There are 9 to spot!!



Surfaces for Sealife

Elizabeth Mills



I have designed novel concrete surfaces to enhance the biodiversity and reduce marine invasive species, the second biggest threat to global biodiversity. It's a hands on interdisciplinary project between marine biology and engineering, with over 200 panels deployed around the Scottish east coast and over 30 species living on them.

Colourful Sealife!

Bring life to this underwater world by giving it colour!



The Perfect Kiss

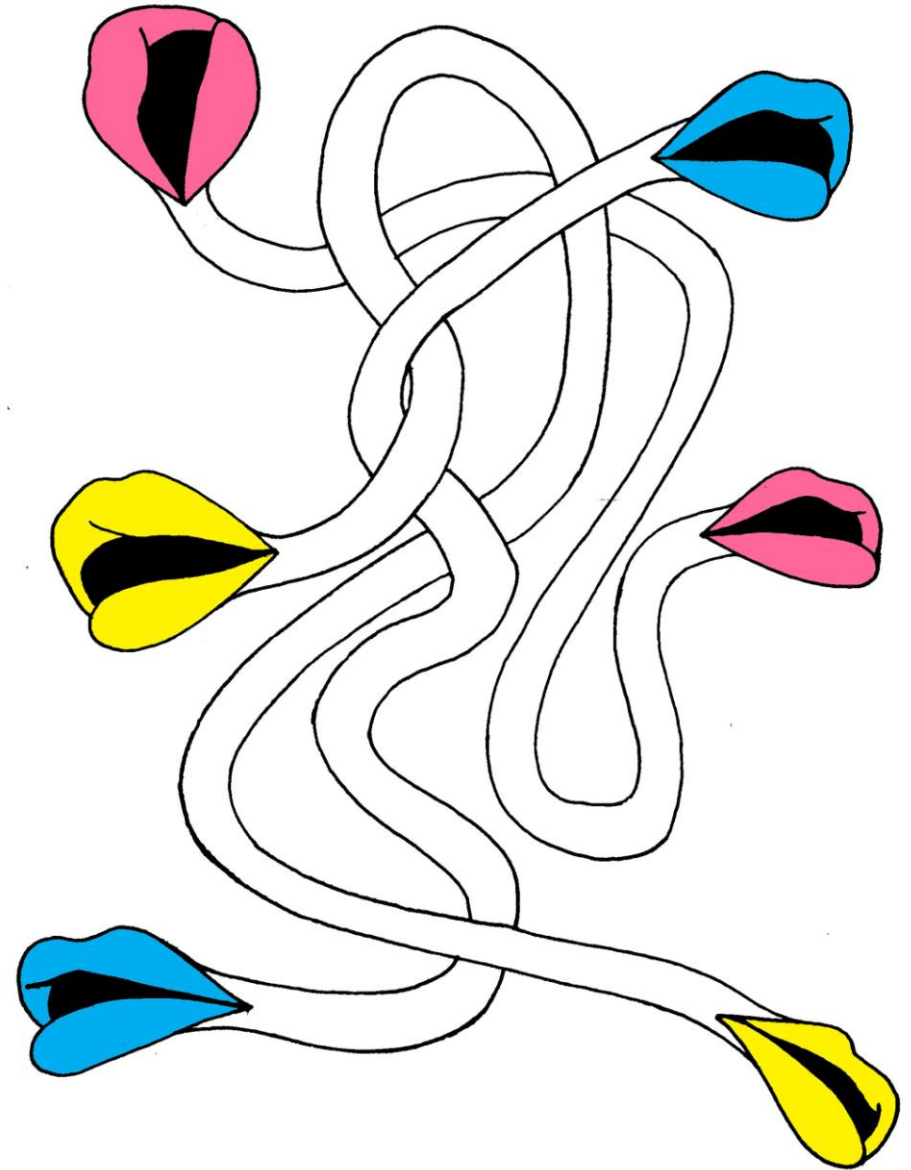
Nicole Hindley



Synapses are small gaps between brain cells. Described as "kisses" by neuroscientist, Cajal, they're critical for communication throughout our bodies. Optimal synaptic function relies on "perfect" protein expression and combination, abnormalities result in diseases. I identify synaptic protein "imperfections," furthering understanding of how the "perfect kiss" is lost in disease.

Lost Synapses!

Can you help these tangled synapses find their way to their perfect matching partners?



Make A Monster!

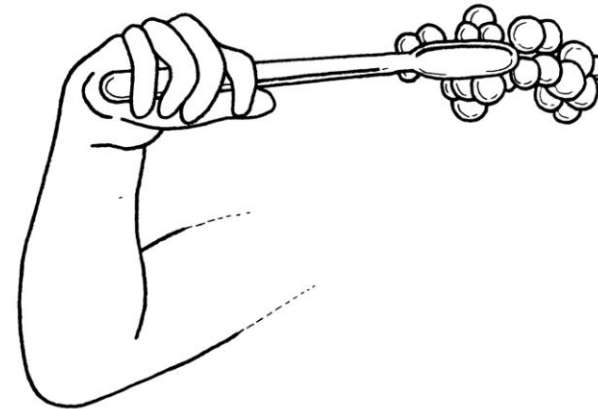
Draw your own monster with a big mouth full of teeth for them to get squeaky clean with their toothbrush!

Close the Gap with No Jaw Snap

Omar Alshaibi



A clinical trial at the Orthodontics department/ Dental School, which aim to treat the anterior open bite (a gap between upper and lower teeth by use of braces, we are still recruiting participants.



Don't forget to bring your monster to life with colour!

The Waiting Room

Susie Johnston



My practice as an artist frames new interpretations through placing materials at the centre of my research. In this image the push and pull of the layers of paint both reveal and hide histories and entanglements with colour, form, line and composition.

Find Patterns!

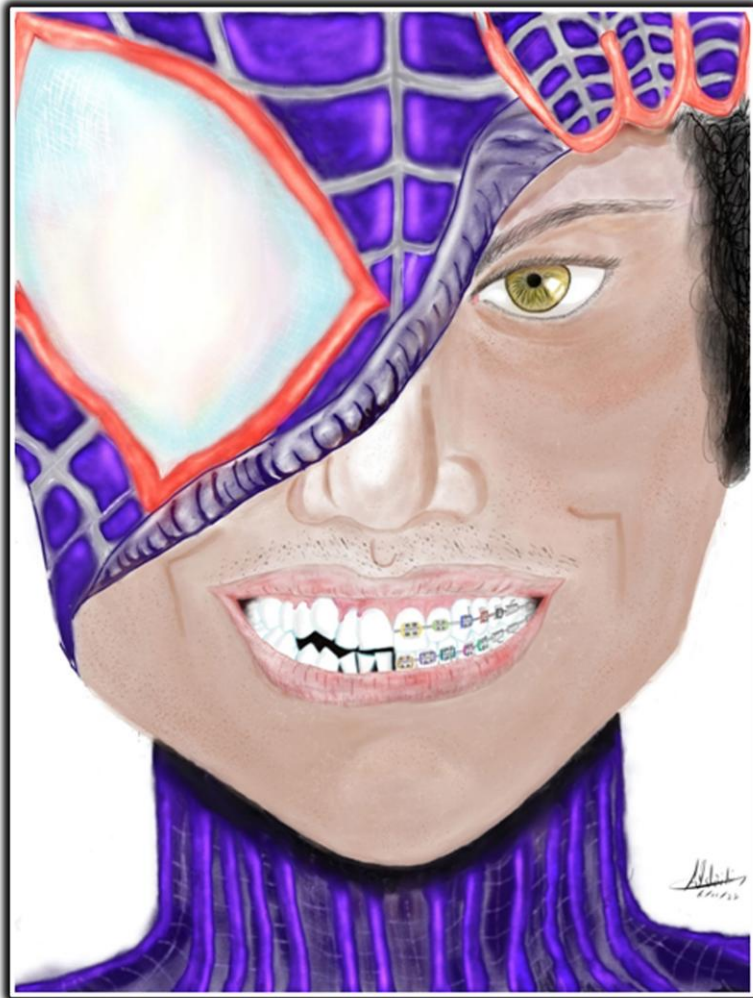
Can you see shapes in the paint? Use a pen to draw around the shapes to create your own patterns!



The floral pattern is an example to get you started! There is no wrong way to make a pattern - use your creativity!

Even Superheroes Need Braces: You do not have to hide your Smile :)

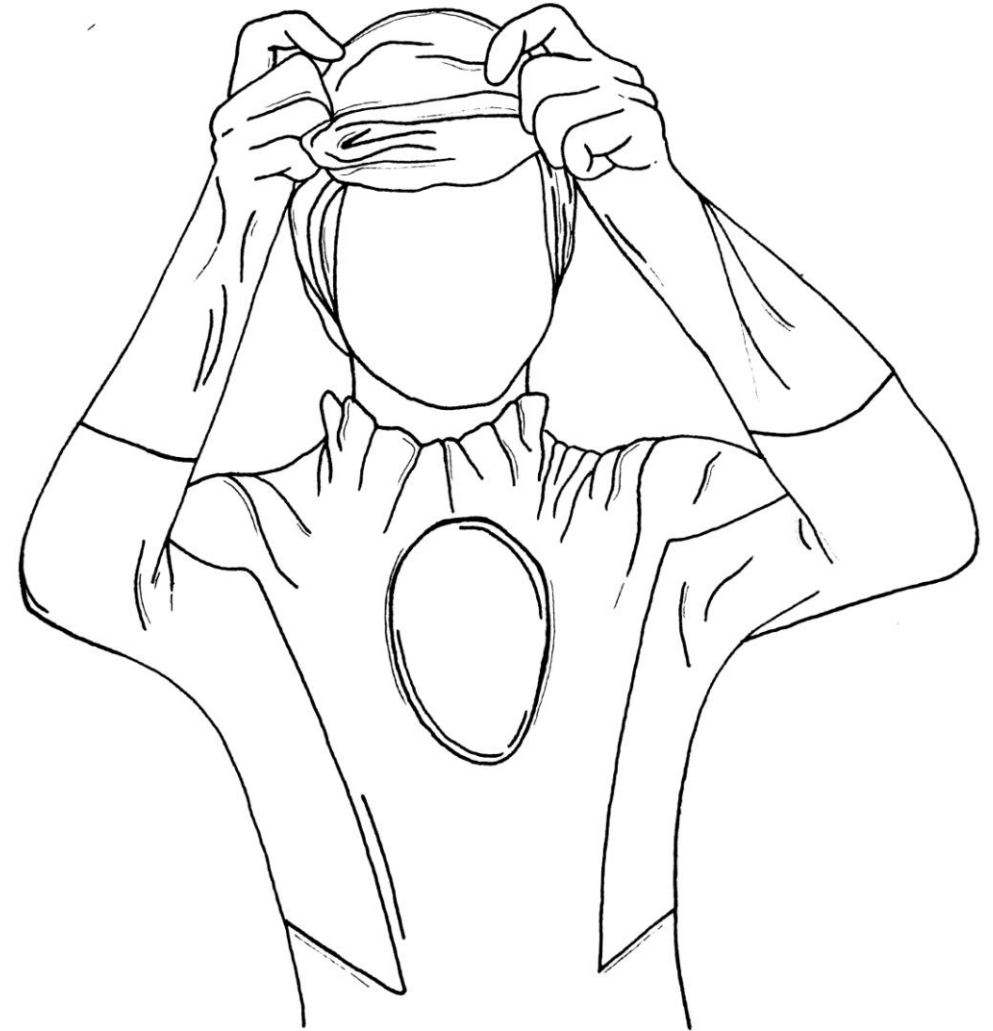
Omar Alshaibi



As a part of my research, I am collecting data about the Orthodontics patient's experiences and some of the questions are why they did not seek advice regarding braces, were they bullied because of crooked teeth, and the impact of a beautiful smile on their life after finishing the treatment.

Your Superhero!

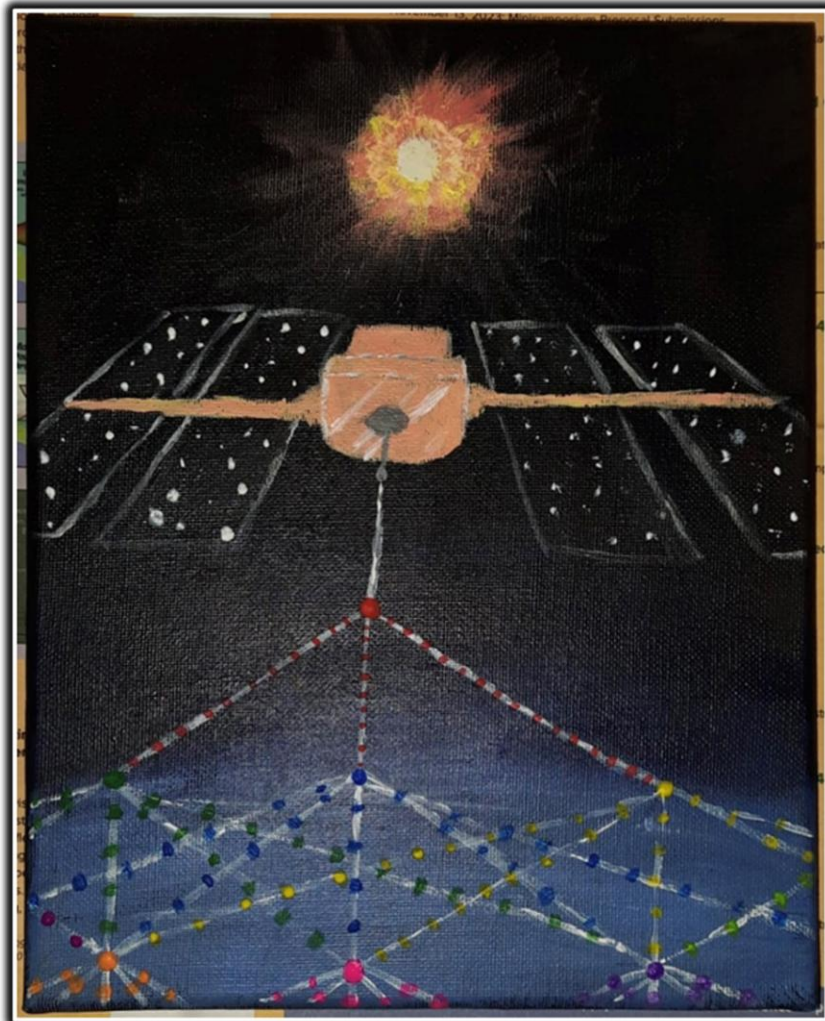
Use the blank face to draw what a superhero looks like to you. Remember to colour in your super-suit!



Top tip: think about the people you care about in your life and what you think makes them super!

Machine Learning for Solar Weather Prediction

Daniel Norman



A painted depiction of the SOHO spacecraft taking in solar data, and transmitting it earthward, where it gets filtered through a Neural Network AI which aims to predict solar weather on the surface of the sun.

Wordsearch!

Can you find all the space words in this wordsearch?

I	T	A	H	A	P	F	W	S	E	F	G	T	P	P	A	C	S	B	H	R	D	R	A
L	S	O	L	A	R	A	F	E	Q	S	A	G	A	L	F	S	U	R	Z	F	A	W	C
C	J	F	J	D	P	Q	D	Y	A	E	U	X	J	A	X	N	R	M	W	P	T	F	L
Z	F	W	H	R	L	S	C	J	P	T	I	T	E	N	R	S	F	U	P	E	A	R	C
S	A	L	I	H	F	R	A	E	G	I	H	L	I	E	S	T	A	I	C	E	X	W	S
P	E	A	D	C	O	I	Z	O	S	Z	R	E	X	T	A	S	C	P	A	D	E	F	G
A	H	L	M	S	A	T	E	L	L	I	T	E	R	P	P	R	E	S	S	T	W	A	V
C	Y	E	R	D	L	A	S	X	A	C	T	R	A	M	A	C	S	L	P	W	A	E	M
E	R	L	E	T	H	I	D	F	X	A	S	T	S	A	L	E	A	R	N	I	N	G	A
C	I	Q	S	R	E	S	P	A	C	F	X	C	D	A	T	O	R	I	Z	P	R	C	U
R	P	C	E	A	K	E	W	C	A	T	J	S	A	L	S	T	S	K	Y	A	R	L	I
A	G	R	A	X	F	A	S	T	R	O	N	A	U	T	P	W	H	L	O	L	E	A	S
F	M	A	R	E	L	L	Y	S	A	M	O	C	L	O	E	E	C	O	M	M	O	E	T
T	S	T	C	A	Q	U	K	A	E	Y	S	P	R	E	D	I	C	T	I	O	N	E	A
M	I	O	H	N	E	A	D	E	K	U	G	A	X	S	A	I	K	I	K	Y	A	I	R
S	H	X	M	Q	D	F	A	L	S	H	I	S	A	U	D	X	A	S	C	E	P	A	S
T	S	V	L	A	Z	T	R	A	S	U	N	W	C	E	A	H	G	B	G	T	M	O	J
R	B	R	T	M	C	O	P	R	F	M	C	O	A	I	M	N	I	G	A	X	H	L	S
L	O	U	Z	S	Q	H	W	L	A	E	S	C	H	P	E	H	W	S	T	J	N	S	N
P	C	H	I	M	R	A	I	F	A	Z	E	Q	E	T	U	N	O	W	R	Y	I	P	A
D	F	G	J	L	S	F	H	N	K	Z	C	B	M	X	V	N	C	Q	A	Z	W	S	X
E	D	C	R	F	V	T	G	B	E	Y	H	N	U	J	M	I	K	E	A	R	T	H	L
O	P	G	A	L	A	X	Y	Q	A	Z	W	S	X	E	D	C	R	F	V	T	G	B	Y
H	N	M	U	J	I	M	N	R	F	C	S	T	R	A	N	S	M	I	T	P	S	A	F
Z	A	Q	X	S	W	C	D	E	V	F	R	B	G	T	N	H	Y	M	J	U	I	L	O

Astronaut

- Data
- Earth
- Facts
- Galaxy
- Hot
- Learning

Machine

- Planet
- Prediction
- Research
- Satellite
- Science
- Sky

Solar

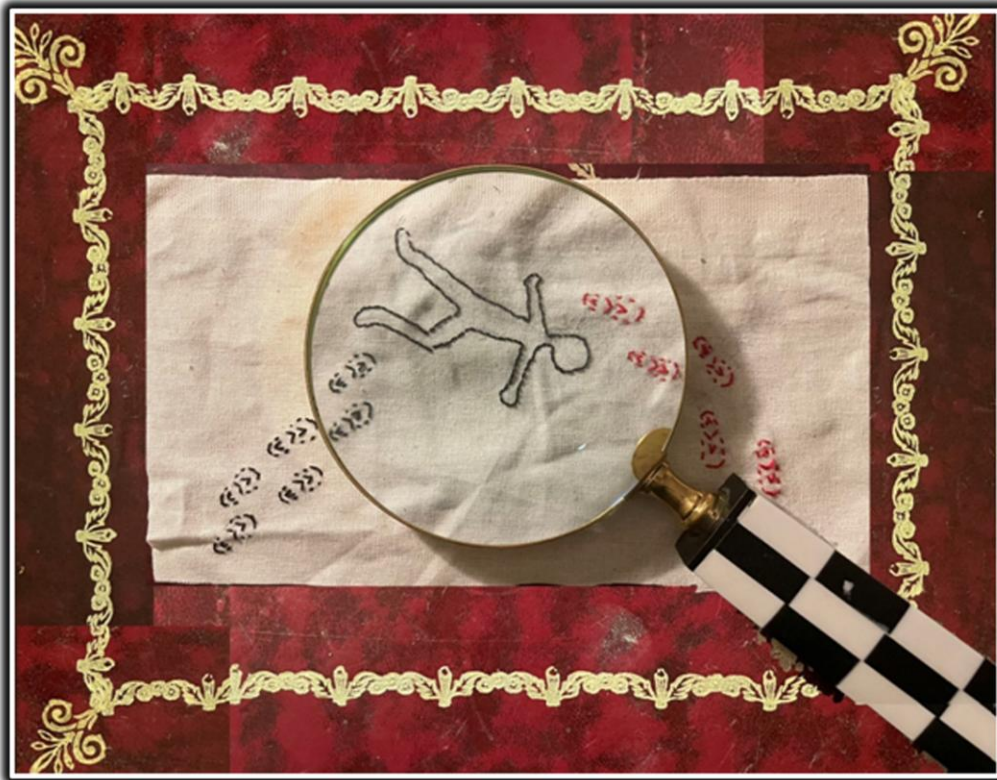
- Spacecraft
- Stars
- Sun
- Surface
- Transmit
- Weather

Colour by Numbers!

Use these colours to reveal the hidden message...



Whodunnit Ella Schad



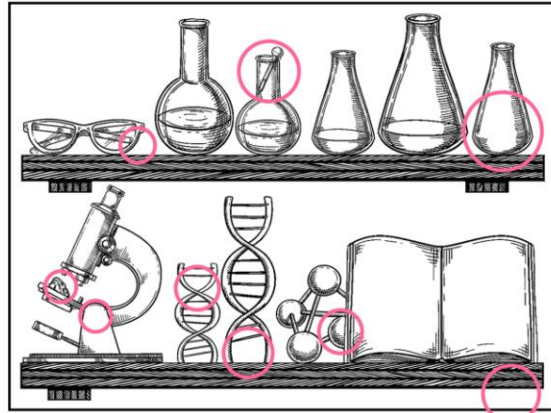
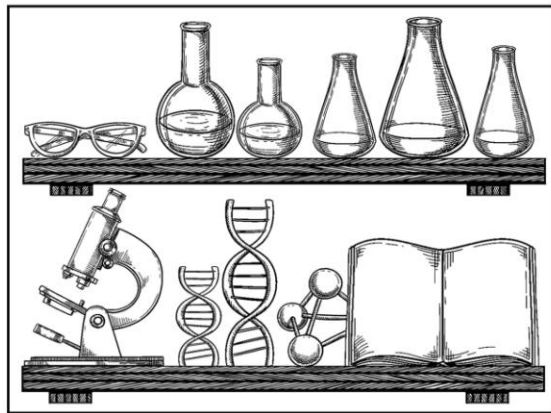
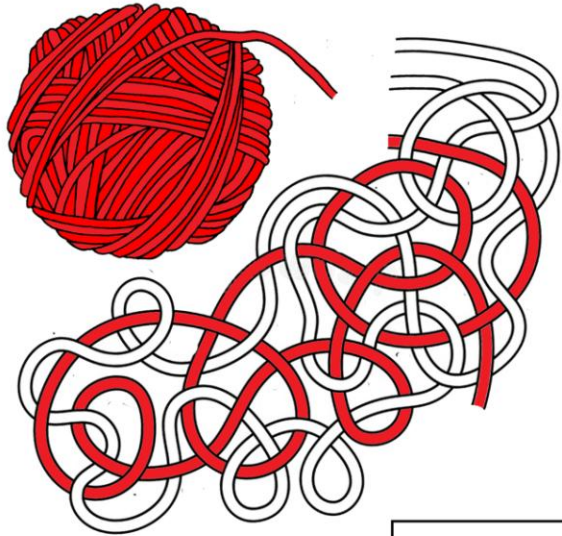
Telling people that my PhD is in Computational Linguistics clarifies little. So, with this picture, I can summarise that I'm looking into hypothesis generation and their improvement; I'm currently using murder mystery games to investigate this. Being a detective is an apt description – following clues, deducing, and hard work!



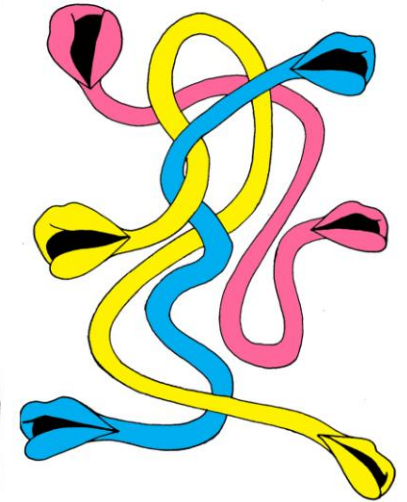
Free Space!

Doodle anything you want on this blank canvas!

Solutions!



Did you get the puzzles right!?



I	T	A	H	A	P	F	W	S	E	F	G	T	P	P	A	C	S	B	H	R	D	R	A	
L	S	O	L	A	R	A	F	E	Q	S	A	G	A	L	F	S	U	R	Z	F	A	W	C	
C	J	F	J	D	P	Q	D	Y	A	E	U	X	J	A	X	N	R	M	W	P	T	F	L	
Z	F	W	H	R	L	S	C	J	P	T	I	T	E	N	R	S	F	U	P	E	A	R	C	
S	A	L	I	H	F	R	A	E	G	I	H	L	I	E	S	T	A	I	C	E	X	W	S	
P	E	A	D	C	O	I	Z	O	S	Z	R	E	X	T	A	S	C	P	A	D	E	F	G	
A	H	L	M	S	A	T	E	L	L	I	T	E	R	P	P	R	E	S	S	T	W	A	V	
C	Y	E	R	D	L	A	S	X	A	C	T	R	A	M	A	C	S	L	P	W	A	E	M	
E	R	L	E	T	H	I	D	F	X	A	S	T	S	A	L	E	A	R	N	I	N	G	A	
C	I	Q	S	R	E	S	P	A	C	F	X	C	D	A	T	O	R	I	Z	P	R	C	U	
R	P	C	E	A	K	E	W	C	A	T	J	S	A	L	S	T	S	K	Y	A	R	L	I	
A	G	R	A	X	F	A	S	T	R	O	N	A	U	T	P	W	H	L	O	L	E	A	S	
F	M	A	R	E	L	L	Y	S	A	M	O	C	L	O	E	E	C	O	M	M	O	E	T	
T	S	T	C	A	Q	U	K	A	E	Y	S	P	R	E	D	I	C	T	I	O	N	E		
M	I	O	H	N	E	A	D	E	K	U	G	A	X	S	A	I	K	I	K	Y	A	I	R	
S	H	X	M	Q	D	F	A	L	S	H	I	S	A	U	D	X	A	S	C	E	P	A	S	
T	S	V	L	A	Z	T	R	A	S	U	N	W	C	E	A	H	G	B	G	T	M	O	J	
R	B	R	T	M	C	O	P	R	F	M	C	O	A	I	M	N	I	G	A	X	H	L	S	
L	O	U	Z	S	Q	H	W	L	A	E	S	C	H	P	E	H	W	S	T	J	N	S	N	
P	C	H	I	M	R	A	I	F	A	Z	E	Q	E	T	U	N	O	W	R	Y	I	P	A	
D	F	G	J	L	S	F	H	N	K	Z	C	B	M	X	V	N	C	Q	A	Z	W	S	X	
E	D	C	R	F	V	T	G	B	E	Y	H	N	U	J	M	I	K	E	A	R	T	H	L	
O	P	G	A	L	A	X	Y	Q	A	Z	W	S	X	E	D	C	R	F	V	T	G	B	Y	
H	N	M	U	J	I	M	N	R	F	C	S	T	R	A	N	S	M	I	T	P	S	A	F	
Z	A	Q	X	S	W	C	D	E	V	F	R	B	G	T	N	H	Y	M	J	U	I	L	O	

Contributors: Omar Alshaibi, Vicky Armstrong, Katie Brown, Nicole Hindley, Susie Johnston, Agathe Lermant, Elizabeth Mills, Daniel Norman, Lucy Robertson and Ella Schad.

Editor: Dr Sandra Oza

Colouring and puzzle artwork: Chloe Henderson

Zine Design: Coin-Operated Press

Images of Research: An Art Gallery and Puzzle Book

DOI: 10.20933/100001304, March 2024, published by University of Dundee, Nethergate, Dundee, Scotland, UK.

All Rights Reserved. All work created for this comic is © University of Dundee and the creators.

This work is licensed under a Creative Commons

Attribution-NonCommercial-NoDerivatives 4.0 International License.

<https://creativecommons.org/licenses/by-nc-nd/4.0/>

This zine has been printed on paper stock that contains 100% recycled fibres with eco-friendly vegetable-based inks. Recycled paper is better for the planet and saves more than 70% of the energy and water used in traditional paper production. Once you are finished with this zine we encourage you to cut it up and re-use the pages to make your own zines! Or you can pop it in the paper recycling bin once you have removed the staples.

To provide feedback or request further copies, please contact engage@dundee.ac.uk



University
of Dundee