



# Snow water equivalent retrieval over Idaho – Part 2: Using L-band UAVSAR repeat-pass interferometry

Zachary Hoppinen<sup>1,2</sup>, Shadi Oveisgharan<sup>3</sup>, Hans-Peter Marshall<sup>1</sup>, Ross Mower<sup>4,5</sup>, Kelly Elder<sup>6</sup>, and Carrie Vuyovich<sup>7</sup>

<sup>1</sup>Department of Geosciences, Boise State University, 1295 University Drive, Boise, ID, USA

<sup>2</sup>Cold Regions Research and Engineering Laboratory, Engineer Research and Development Center, United States Army, Hanover, NH 03755, USA

<sup>3</sup>Jet Propulsion Laboratory, California Institute of Technology, 4800 Oak Grove Dr, Pasadena, CA, USA

<sup>4</sup>National Center for Atmospheric Research, Boulder, Colorado, USA

<sup>5</sup>Department of Civil and Environmental Engineering, University of Washington, Seattle, WA, USA

<sup>6</sup>US Forest Service, Rocky Mountain Research Station, Fort Collins, CO, USA

<sup>7</sup>Hydrological Sciences Laboratory, NASA Goddard Space Flight Center, Greenbelt, MD, USA

**Correspondence:** Zachary Hoppinen (zachary.keskinen@boisestate.edu)

Received: 19 August 2023 – Discussion started: 25 August 2023

Revised: 12 December 2023 – Accepted: 18 December 2023 – Published: 12 February 2024

**Abstract.** This study evaluates using interferometry on low-frequency synthetic aperture radar (SAR) images to monitor snow water equivalent (SWE) over seasonal and synoptic scales. We retrieved SWE changes from nine pairs of SAR images, mean 8 d temporal baseline, captured by an L-band aerial platform, NASA’s Uninhabited Aerial Vehicle Synthetic Aperture Radar (UAVSAR), over central Idaho as part of the NASA SnowEx 2020 and 2021 campaigns. The retrieved SWE changes were compared against coincident in situ measurements (SNOTEL and snow pits from the SnowEx field campaign) and to 100 m gridded SnowModel modeled SWE changes. The comparison of in situ to retrieved measurements shows a strong Pearson correlation ( $R = 0.80$ ) and low RMSE (0.1 m,  $n = 64$ ) for snow depth change and similar results for SWE change (RMSE = 0.04 m,  $R = 0.52$ ,  $n = 57$ ). The comparison between retrieved SWE changes to SnowModel SWE change also showed good correlation ( $R = 0.60$ , RMSD = 0.023 m,  $n = 3.2 \times 10^6$ ) and especially high correlation for a subset of pixels with no modeled melt and low tree coverage ( $R = 0.72$ , RMSD = 0.013 m,  $n = 6.5 \times 10^4$ ). Finally, we bin the retrievals for a variety of factors and show decreasing correlation between the modeled and retrieved values for lower elevations, higher incidence angles, higher tree percentages and heights, and greater cumulative melt. This study builds on previous interferometry work by using a full winter season

time series of L-band SAR images over a large spatial extent to evaluate the accuracy of SWE change retrievals against both in situ and modeled results and the controlling factors of the retrieval accuracy.

## 1 Introduction

Seasonal snow is a critical resource providing drinking water for millions, providing clean hydro-electric power generation, and supporting multi-billion dollar agricultural and recreation industries, with the total value of seasonal snow estimated in the trillions of dollars (Li et al., 2017; Sturm et al., 2017). Consequently, understanding the distribution of seasonal snow water storage and subsequent runoff is essential.

Current techniques fail to effectively resolve snow properties for water forecasters and managers in the face of a changing global climate that will fundamentally alter previous relationships between snowpack monitoring sites (SNOWpack TELEmetry Network, SNOTEL), point-based automatic weather stations, and runoff forecasts. Climate change will bring shifts in the timing and intensity of melt rates (Kunkel, 2016), more frequent rain-on-snow events (Cohen, 2015), and complex region-specific evolution in snowfall patterns (Strapazzon et al., 2021; Domingues et al., 2012). These

changes are altering the relationship between point observations (e.g., SNOTEL sites) and snow conditions at other elevations, and therefore the statistical techniques for using sparse in situ snow measurements to predict spring runoff are becoming less accurate (Livneh and Badger, 2020). A shift to spatially distributed snow estimates is required; however, due to the short length scale of variability in snow, increasing the in situ network to the necessary station density is not logistically or economically feasible. Remote sensing and modeling represent a promising method of determining spatially distributed snow estimates to capture the complexities of snow distributions. Remote sensing of snow water storage currently relies primarily on passive microwave systems with coarse tens of kilometer-scale resolution. Additionally, passive microwave systems can only measure snow depths up to a meter and, therefore, are not valuable for mountainous areas where most of the water available for water resource usage is stored. Active-microwave-based synthetic aperture radar (SAR) does not have depth limitations or resolution constraints, making it useful for measuring and resolving complex global snow water storage patterns.

### 1.1 SAR overview

SAR sensors actively emit electromagnetic energy in the microwave range, frequencies from 1 to 40 GHz, and measure the backscattered (returning) energy and phase. For lower-frequency, longer-wavelength microwave SAR systems over snow-covered ground, the electromagnetic waves are refracted across the air–snow interface and then reflected from the snow–ground interface with limited snow grain interactions (Naderpour et al., 2022). Passing through the snowpack leads to two competing effects: shorter two-way travel distance but slower wave speeds. These effects combine to create phase shifts, due to the changes in travel time, between repeat SAR images that we can analyze to quantify snow height and snow water equivalent changes (Fig. 1). Analyzing phase changes between SAR images, called interferometric SAR (InSAR), allows us to retrieve changes in the snowpack volume using these SAR-observed snow height changes and modeled or observed densities.

Since the returned phases are measurements of sinusoidal wave offsets, there is a “wrapping” effect where as the phase approaches and then passes  $2\pi$  it returns to zero again. This causes an  $2\pi$  modulo ambiguity that has been resolved by unwrapping the phase and adding or subtracting increments of  $2\pi$  to the phase to recover the absolute or unwrapped phase (Goldstein et al., 1988; Rosen et al., 2000). This unwrapping process is relatively simple in high-coherence regions but may be impossible in lower-coherence regions. Consequently, InSAR analysis may use either the wrapped phase, when continuous data are required and the expected phase change is less than  $2\pi$ , or unwrapped data, when the expected phase change may exceed  $2\pi$ .

In this study, we use Eq. (1), proposed by Guneriusson et al. (2001), to retrieve snow height changes ( $\Delta d$ ) at a specific wavelength ( $\lambda$ ) from incidence angle ( $\alpha$ ), phase change ( $\Delta\phi$ ), and the real component of the dielectric permittivity ( $\epsilon_s$ ).  $\epsilon_s$  measures the wave speed through the snowpack and depends on only the snowpack density and liquid water content. We estimated the real component of the dielectric permittivity from snowpack density ( $\rho_s$ ) in  $\text{kg m}^{-3}$  using Eq. (2), assuming no liquid water in the snowpack (Matzler, 1996).

$$\Delta d = -\frac{\Delta\phi\lambda}{4\pi} \frac{1}{\cos\alpha - \sqrt{\epsilon_s - \sin^2\alpha}} \quad (1)$$

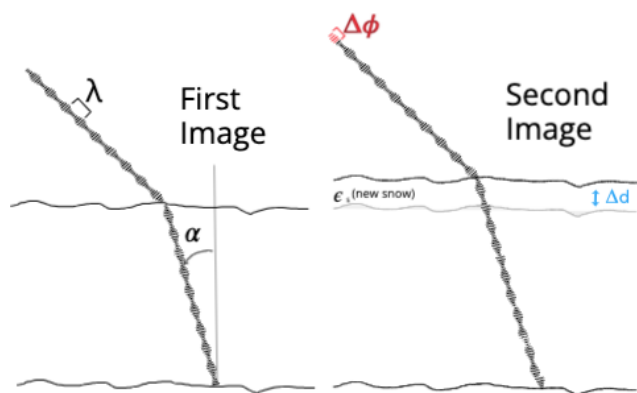
$$\epsilon_s = 1 + 1.6 \times 10^{-3} \cdot \rho_s + 1.8 \times 10^{-9} \cdot \rho_s^3 \quad (2)$$

InSAR retrievals of the amount of water stored in the snowpack, snow water equivalent (SWE), are generally preferred to capturing snow height changes for two reasons. First, most water managers are primarily interested in the volume of water stored within the snowpack rather than the height of snow. Secondly, conversion to SWE should minimize the effects of errors in the estimation of  $\rho_s$  in Eq. (2). For example, an overestimation of  $\rho_s$  will lead to a slower estimated wave speed through the snowpack and an underestimation of snow depth. However, when we convert the retrieved snow depth to SWE using this higher density, this underestimation of depth is counteracted, minimizing the impact of errors in density. This means using even the edge cases of snow density have a limited impact on SWE retrievals ( $< 7\%$ ; Leinss et al., 2015). Some studies have used approximations of SWE change directly from phase (Leinss et al., 2015; Guneriusson et al., 2001; Oveisgharan et al., 2024). Since we wanted to compare to our snow depth measurements and errors in density should have limited impacts on the retrievals we use a density estimate to calculate both snow depth and SWE changes (see Sect. 3.4).

### 1.2 Previous work

Previous research has demonstrated promising retrievals of snow height and SWE changes using InSAR phase shifts in seasonal mountain snowpacks. However, these studies have focused on simple topography with limited numbers of InSAR pairs and have yet to explore the accuracy or controlling factors of InSAR retrievals in complex mountain terrain (Marshall et al., 2021; Deeb et al., 2011).

Guneriusson et al. (2001) showed fringe patterns consistent with snow accumulation in a pair of March ERS-1, C-band ( $\lambda \approx 0.05$  m), images that captured a 4 cm change in SWE but did not have in situ observations to validate the change. Marshall et al. (2021) explored L-band ( $\lambda \approx 0.231$  m) snow depth inversion over a  $4 \text{ km}^2$  region on Grand Mesa, Colorado, using lidar and Uninhabited Aerial Vehicle Synthetic Aperture Radar (UAVSAR) imagery from 1 and 12 February 2020, and showed good agreement between lidar depth change and UAVSAR estimated depth change ( $r^2 =$



**Figure 1.** Conceptual model of phase differences between two SAR images with an increase in snow height between image acquisitions.  $\Delta d$  is the increase in snow height between the first and second images,  $\Delta\phi$  is the corresponding shift in phase due to changes in path length and wave speed,  $\alpha$  is the incidence angle,  $\lambda$  is the wavelength, and  $\epsilon_s$  is the real component of the dielectric constant of the new snow.

0.76, RMSE < 0.05 m). Tarricone et al. (2023) used three L-band InSAR pairs to estimate both accumulation and ablation in the Jemez River, New Mexico, with accumulation and ablation patterns showing agreement with both in situ depth sensors and changes in fractional snow-covered area. Ruiz et al. (2021) successfully captured a season-long SWE accumulation at a tower-based site using InSAR phase changes at L-band with temporal baselines up to 12 d in length at L-band. Comparison to in situ SWE showed RMSEs between 8.77–26.07 mm depending on the temporal baseline used in the analysis. Additionally, they showed an overestimation of SWE by 7–21 mm of SWE from the tower-based L-band InSAR compared to the in situ SWE measurements. Finally, Nagler et al. (2022) measured SWE changes using a C- and L-band airborne InSAR instrument for a pair of snowfall events. The in situ measurements captured 66.4 mm of SWE change, and the L-band InSAR captured a mean SWE change of 70.3 mm with a root mean squared difference of 11.2 mm. These studies demonstrate the promise of InSAR SWE and depth retrievals at both C- and L-band. We expand on these previous studies by increasing the number of in situ observations and image pairs analyzed and utilizing the large study areas which include complex topography and a large elevation range to explore controlling factors on the accuracy of InSAR retrievals.

### 1.3 Research questions

We explore two research questions to clarify the ability of lower-frequency L-band radars to retrieve snow properties:

1. How accurate are snow depth and SWE change retrievals over complex mountain terrain using L-band interferometric radar analysis?

2. How does tree coverage, total snow depth, incidence angle, coherence, and snow wetness impact the accuracy of L-band interferometric retrievals?

## 2 Methods

### 2.1 Data sets

This research combines in situ, modeled, and aerial data sets of snow properties over the central mountains of Idaho to address our research questions (Fig. 2) (Liston and Elder, 2006; Liston et al., 2020). We use the weekly to biweekly time series of L-band SAR observations from UAVSAR collected for the 2020 and 2021 NASA SnowEx mission to retrieve snow depth and SWE. The validation data included in situ observation from weekly snow pits (depth, SWE, wetness), telemetered snow station measurements, interval boards (Greene et al., 2022), and spatially distributed model results of both SWE and SWE melt. Additionally, we explored how the retrieval accuracy changed with vegetation and topography, using geomorphological and vegetation data from the 10 m USGS National Elevation Dataset (NED) (Gesch et al., 2018), 2016 National Land Cover Database 30 m vegetation percentage maps (Jin et al., 2019) and 2019 30 m Global Land Analysis and Discovery forest height data set (Potapov et al., 2021).

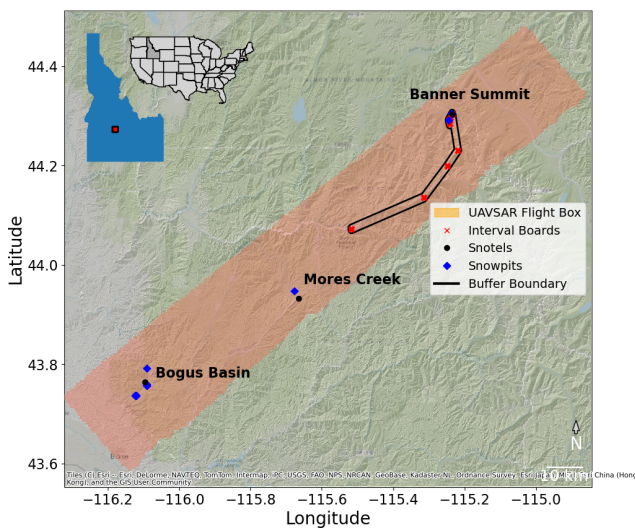
### 2.2 UAVSAR imagery

The UAVSAR platform is a fully polarimetric L-band InSAR instrument mounted on a NASA Gulfstream III aircraft (Hensley, 2008; Rosen et al., 2006). It flies at  $\approx 13\,700$  m with a sensor center frequency of 1.26 GHz ( $\lambda = 0.2384$  m). UAVSAR was tasked to perform weekly to biweekly observations over 14 sites in the western United States from January to March for the 2020 and 2021 NASA SnowEx mission. The UAVSAR imagery was processed by the NASA Jet Propulsion Laboratory, including SAR focusing and georeferencing with the Shuttle Radar Topography Mission (SRTM) DEM, radiometric calibration, motion compensation, and phase unwrapping using the integrated correlation and unwrapping (ICU) algorithm (Rosen et al., 2006; Fore et al., 2015). The InSAR phase between images was calculated by multiplying the phase of one image against the complex conjugate of another image. The imagery was downloaded and converted to netCDFs using *uavsar\_pytools* (Hoppinen et al., 2022).

This study used 12 UAVSAR image pairs from the 2019–2020 and 2020–2021 winters over central Idaho from repeated flight paths at a heading of  $232^\circ$  (Table 1). These image pairs were all nearest temporal neighbors from 14 image acquisitions. For most analyses we only utilized the nine image pairs that successfully unwrapped (see Sect. 1.1 for discussion of phase wrapping) (Table 1). We utilized the wrapped images when complete spatial or temporal cover-

**Table 1.** UAVSAR flight dates.

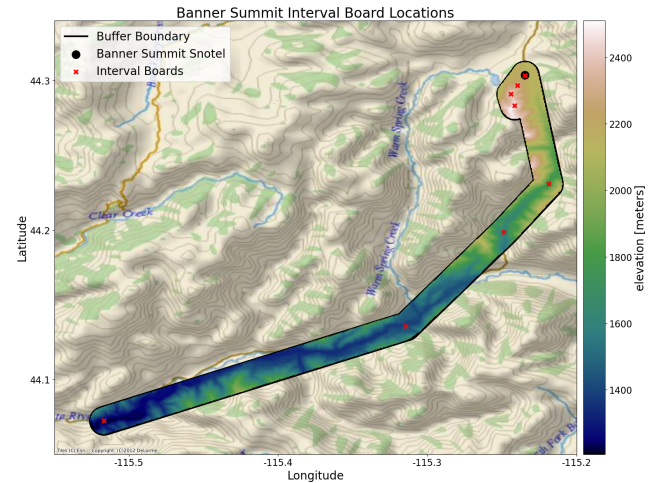
Flight 1 date	Flight 2 date	Unwrapped?
20 Dec 2019	31 Jan 2020	N
31 Jan 2020	13 Feb 2020	N
13 Feb 2020	21 Feb 2020	Y
21 Feb 2020	11 Mar 2020	Y
15 Jan 2021	20 Jan 2021	Y
20 Jan 2021	27 Jan 2021	Y
27 Jan 2021	3 Feb 2021	Y
3 Feb 2021	10 Feb 2021	Y
10 Feb 2021	3 Mar 2021	N
3 Mar 2021	10 Mar 2021	Y
10 Mar 2021	16 Mar 2021	Y
16 Mar 2021	22 Mar 2021	Y

**Figure 2.** Map of the study area showing the outline of the UAVSAR flight box, snow pits, SNOTEL, interval board locations, and the buffer around the interval boards used.

age was necessary and explicitly state in the methods when wrapped imagery was used. The bounding box for these images was  $\approx 170 \times 16$  km and stretched from the foothills of Boise into the Sawtooth Mountains. This box includes the Dry Creek Experimental Watershed, Mores Creek Summit, and Banner Summit, where field teams performed in situ observations on the flight dates (Fig. 2).

### 2.3 In situ observations

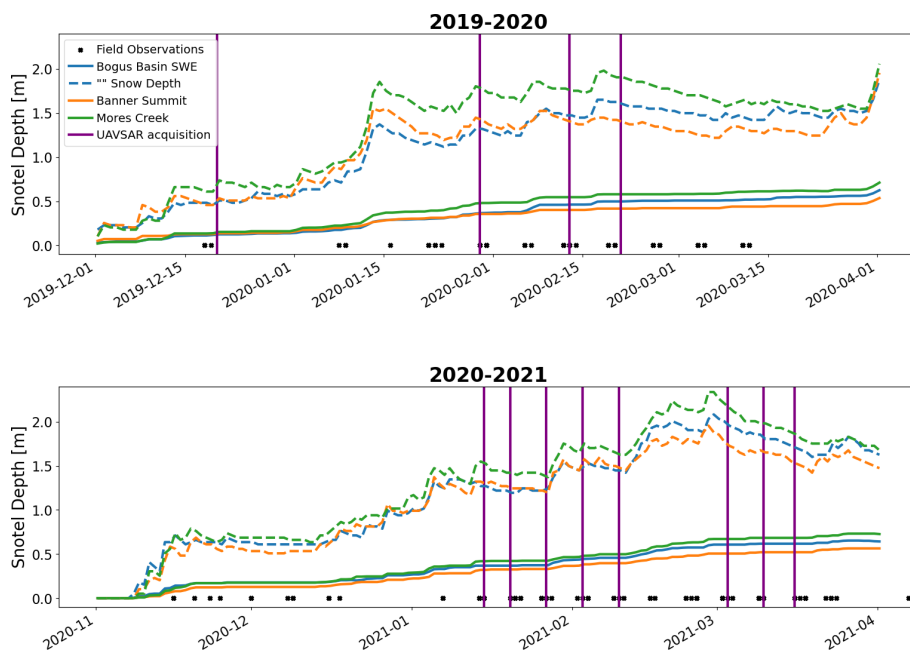
The in situ data included automated weather station data from SNOTEL stations, SWE increase measurements from interval boards, and snow pits coincident with UAVSAR flights from the Dry Creek, Mores Creek, and Banner Creek study sites (Schaefer and Paetzold, 2000). Interval board data collected the accumulated snow depth and SWE between UAVSAR flights from four to nine locations near the

**Figure 3.** Map of the interval board locations and 1 km buffer around a line connecting the interval board locations used to clip the UAVSAR data.

Banner Summit SNOTEL (Fig. 3). The SNOTEL stations used were SNTL:ID:978 (Bogus), SNTL:ID:637 (Mores), and SNTL:ID:312 (Banner) (USDS National Resource Conservation Service, 2022). The SNOTEL network is a system of 900 telemetered stations with snow depth, snow water equivalent, and temperature. Stations measure SWE with a pressure measurement from a glycol-filled bladder, measuring the weight of the snowpack at hourly intervals. The snow pit observations included measurements of total snow depth, dielectric permittivity, full density profiles in 10 cm increments, layer-based measurements of snow wetness and grain form, and site descriptions of vegetation and ground cover (Table 2). For each InSAR image pair, repeat snow pits within  $\pm 2$  d of both flights were included (Fig. 4).

### 2.4 SnowModel

A distributed snow-evolution modeling system (SnowModel) was used to simulate snow properties (e.g., snow depth, SWE, snowmelt, and snow density) over different climates and landscapes (Liston and Elder, 2006; Liston et al., 2020). The SnowModel domain is on a structured grid with spatial resolutions ranging from 1 to 200 m (although it has the ability to simulate coarser resolutions as well) and temporal resolutions ranging from 10 min to 1 d. The required inputs to run SnowModel include (1) temporally varying meteorological variables of precipitation, wind speed and direction, air temperature, and relative humidity taken from meteorological stations or atmospheric models and (2) spatially distributed topography and land-cover type. The primary modeled processes include accumulation from frozen precipitation; blowing-snow redistribution and sublimation; interception, unloading, and sublimation within forest canopies; snow-density and grain-size evolution; and snowpack ripening and melt (Liston and Elder, 2006).



**Figure 4.** The 2020 and 2021 snow water equivalent (solid line) and snow depth (dashed line) measurements for the three SNOTEL sites used in this study. Purple lines represent UAVSAR flights and black x’s represent days with field observations.

**Table 2.** SnowEx snow pits.

Site name	Date range	Number of coincident pairs	Latitude	Longitude
Banner Summit SNOTEL	30 Jan 2020–22 Mar 2021	12	44.29086	–115.24387
Lower Deer Point – Open	21 Jan 2021–23 Mar 2021	8	43.73691	–116.12208
Lower Deer Point – Tree	21 Jan 2021–23 Mar 2021	6	43.73634	–116.12072
Bogus Basin Lower Trees	22 Jan 2021–18 Mar 2021	5	43.75689	–116.09078
Bogus Basin Lower	22 Jan 2021–24 Mar 2021	8	43.75705	–116.09099
Mores Creek Summit	12 Feb 2020–4 Mar 2021	2	43.94735	–115.67666
LDP Open	31 Jan 2020–11 Mar 2020	4	43.73701	–116.12188
LDP Tree	31 Jan 2020–11 Mar 2020	4	43.73640	–116.12050
Banner Summit Open	30 Jan 2020–18 Mar 2021	5	44.30461	–115.23598
Bogus Basin Upper	31 Jan 2020–11 Mar 2020	4	43.75878	–116.09017

The modeled daily aggregated SWE and melt data were generated by simulations using Parallel SnowModel, a parallelized version of SnowModel (Mower et al., 2023). The data were indexed from Parallel SnowModel simulations executed using 1800 processes on NASA’s Center for Climate Simulation (NCCS) Discover supercomputer with a 1560-teraflop SuperMicro cluster featuring 20 800 Intel Xeon Skylake processes (Carriere, 2023) over the contiguous United States (CONUS) at a 100 m grid increment with a 3 h forcing time step, daily aggregated output, and single-layer snowpack configuration. The following inputs were used for the simulations: USGS NED for topography on a 30 m grid (Gesch et al., 2018), the North American Land Change Monitoring System (NALCMS) land cover 2015 map for vegetation on a 30 m grid (Homer et al., 2015; Jin et al., 2019; Latifovic et al., 2012), and forcing variables from a high-

resolution Weather Research and Forecasting (WRF) model from the National Center for Atmospheric Research (NCAR) on approximately a 4 km grid (Rasmussen et al., 2023).

### 3 InSAR snow depth retrievals

#### 3.1 Polarization

For this analysis, we utilized the phase changes from the VV polarization based on higher coherence in the co-polarized band than in the cross-polarized bands. The choice of VV over HH was due to higher coherence in VV and to minimize interactions of the radar echoes with vegetation and ice layers, which might raise the phase centroid above the ground surface.

### 3.2 Setting the reference UAVSAR phase

An essential consideration of InSAR imagery is the need for a reference phase. The initially measured phases are arbitrary, and only relative differences across a scene have information. Consequently we need a method of setting the absolute phase values of a scene. For snow property retrievals this involves using external information (snow depth or SWE changes) to set the mean phase (Leinss et al., 2015). We set each InSAR image's mean scene-wide phase using the mean snow depth change and densities of all available situ measurements (Eq. 3).

$$\phi_{\text{scene}}(t) = \frac{\Delta d_{\text{insitu}}(t) \times \lambda}{4\pi} \times \frac{1}{\cos \alpha - \sqrt{\epsilon_s(\rho_s) - \sin^2 \alpha}}, \quad (3)$$

with  $\Delta d$  representing the average change in snow depth across the in situ stations,  $\epsilon$  calculated from the average density across the in situ measurements using Eq. (2), and  $\alpha$  representing the scene-wide mean incidence angle. Equation (3)'s  $\Delta d_{\text{insitu}}$  and  $\rho_s$  were set by aggregating all available in situ and modeled measurements for each UAVSAR pair. This approach limits the biasing effects of setting this mean phase with our in situ data since this is only a mean shift over the entire scene. We calculated the mean phase from regions with non-zero modeled SWE to minimize impacts from non-snow-related factors.

For the model comparison, we mean shifted the phase to match the expected phase from the scene-wide mean in the modeled SWE change.

### 3.3 Atmospheric correction

We corrected for atmospheric phase delays due to temporally varying water vapor, air temperatures, and pressures by downloading ERA5 atmospheric data for all acquisition dates and calculating the  $z$ -integrated phase delay difference between acquisition dates for each pair of images (Hoppinen et al., 2022; HERSBACH et al., 2020; DOIN et al., 2009). This phase delay difference was then subtracted from the measured InSAR phase changes.

We elected to use the ERA5 reanalysis atmospheric models to remove the atmospheric phase instead of phase elevation relationships to avoid removing our SWE accumulation signal, which can be correlated with elevation. To visualize the impacts of these atmospheric corrections, we converted these atmospheric corrections to theoretical errors in the SWE retrieval using the incidence angle raster and the mean in situ density for each pair of images (Fig. 5).

### 3.4 Retrieving SWE changes

For each UAVSAR image pair, we used the mean in situ density from the relevant SNOTEL and snow pit observations to estimate the dielectric permittivity combined with the local incidence angle and phase to calculate the snow depth and SWE change at each pixel using Eq. (1) (Fig. 6).

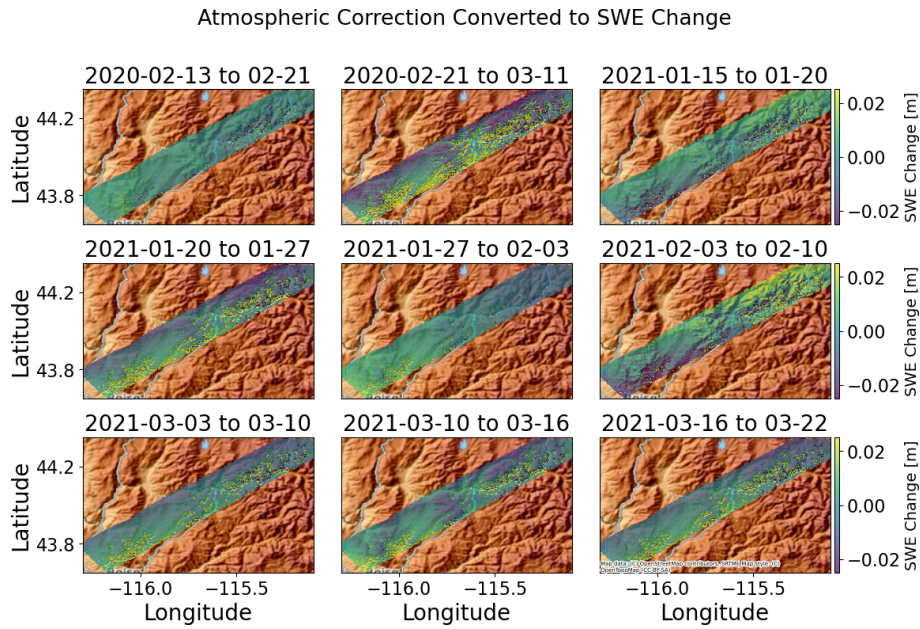
### 3.5 Statistical comparison of InSAR SWE retrievals

We began by visualizing three SNOTEL sites' SWE and snow depth measurements for January 2021 to March 2021 against co-located UAVSAR snow and SWE retrieval depths. To generate our UAVSAR-retrieved snow depth profiles, we used the in situ-measured depth and SWE at our first flight date (15 January 2021) and then cumulatively added the mean retrieved snow depth and SWE from a 100 m box around each SNOTEL site ( $\approx 20$  looks). As some image pairs and regions failed to unwrap (Table 1, Fig. 6), we used the wrapped phase to ensure we would be able to retrieve a continuous SWE retrieval time series for all the SNOTEL sites.

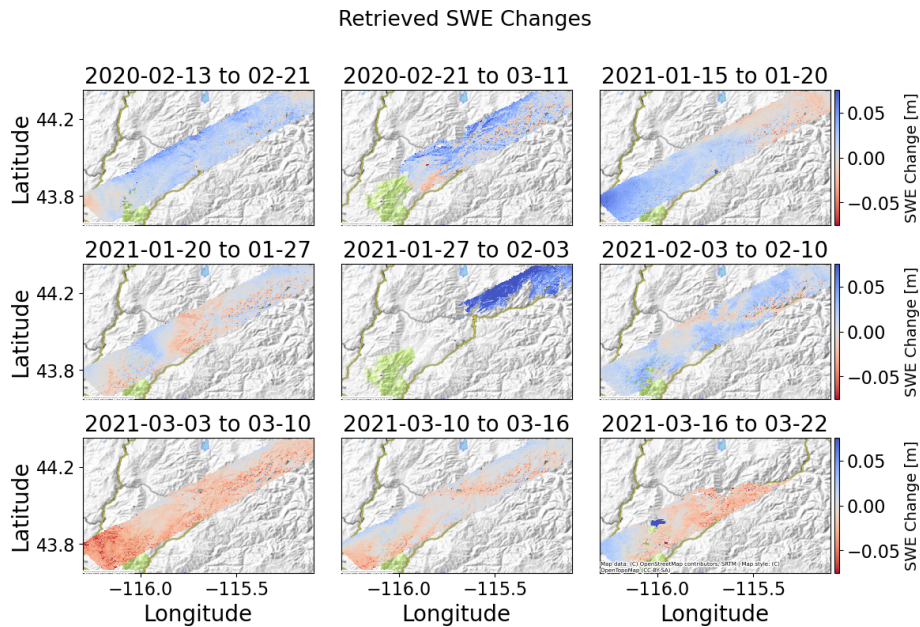
We next compared the UAVSAR snow depth and SWE change retrievals to the field snow pits and SNOTEL sites combined using the Pearson correlation coefficient ( $r$ ), root mean squared error (RMSE), and mean absolute bias (retrieved – in situ). The retrieved values were averaged from a 100 m box around the field location. The snow pits were selected if they were within  $\pm 2d$  of either the first or second flight in a pair. We subtracted the snow depth from spatially coincident pits to get the snow depth change observed between flights. We calculated 95 % confidence intervals for RMSE, Pearson  $r$ , and bias from 1000 bootstrapped samples of the UAVSAR and in situ snow depth changes ( $n = 64$ ).

To explore how effectively the UAVSAR-retrieved SWE captured orographic trends in accumulation, we compared the relative increase in SWE from a series of interval boards at varying elevations near the Banner Summit study site to the relative increases in retrieved UAVSAR SWE changes. We set the SWE change to zero at the lowest board and calculated the changes in SWE change at each elevation where we had an interval board. We did the same for the UAVSAR-retrieved SWE change within a 1 km buffer around a line connecting the interval board locations. The UAVSAR SWE change in that buffer was then binned by elevation and plotted against the increase in SWE on the interval boards. We used the wrapped phase in this analysis to avoid bias due to aspects or elevations with lower coherence.

We compared the SnowModel and UAVSAR-retrieved SWE changes by calculating Pearson  $r$  and root mean squared difference (RMSD) for all pixels, a subset of pixels that had no modeled SWE melt, and another subset of pixels with no modeled melt and with tree percentages below 10 %. We chose RMSD over RMSE for the comparison of modeled to retrieved SWE due to the error between the SnowModel and in situ measurement (RMSE = 0.15 m,  $R = 0.45$ ). Using RMSD better captures that differences between retrieved and modeled results do not necessarily represent primarily errors in the retrieved values but represent some combined and unknown contributions of errors from both data sets. Next, to explore how RMSD changed with varying geophysical and snow properties, we compared the changes in RMSD by plotting the temporal RMSD at each pixel against the tempo-



**Figure 5.** Changes in the retrieved SWE from each time period from atmospheric corrections. Note that each atmospheric correction was normalized to a mean of zero and plotted with the same color bounds to improve comparisons.

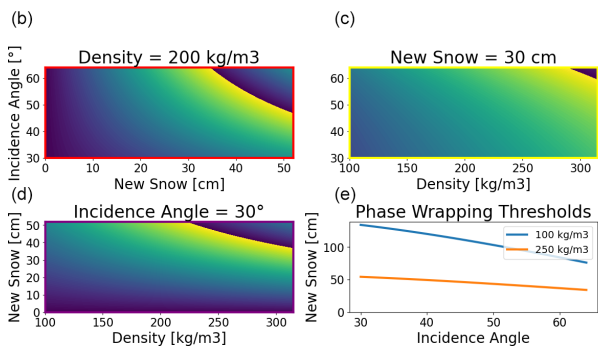
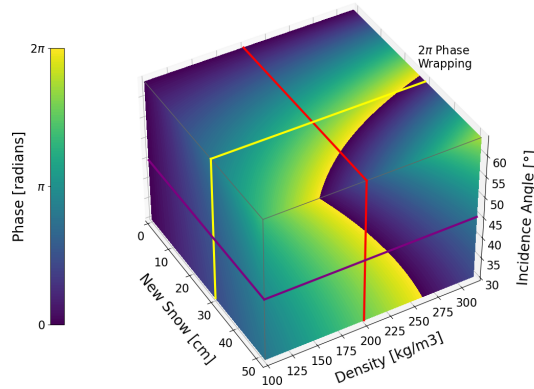


**Figure 6.** The retrieved SWE change in meters for each pair of nearest-neighbor image pairs. To improve comparison these are all plotted on the same color bounds.

rally averaged coherence, tree percentage, elevation, maximum modeled SWE depths, and average SWE melt. We used the wrapped phases in this comparison step to avoid biasing the results from low-coherence areas that failed to unwrap and since the magnitude of SWE change in our study region rarely exceeds  $2\pi$ . We then binned the RMSDs across the whole parameter ranges for elevation, incidence angle, tree

percentage, tree height, coherence, and cumulative melt. We excluded bins with less than 100 pixels to avoid bias from small sample sizes.

(a) L-band Theoretical Phase Change from Dry Snow Accumulation

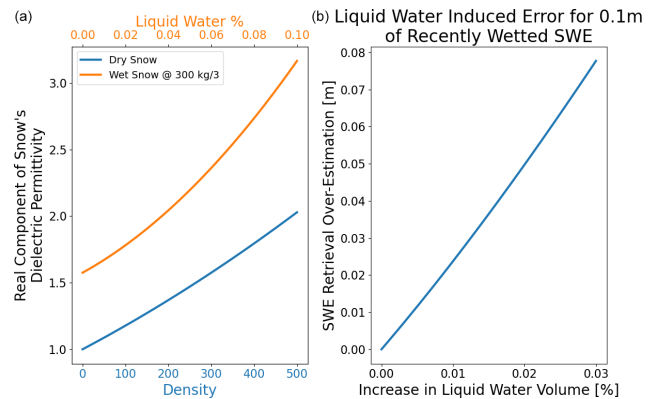


**Figure 7.** Theoretical phase increases for varying new-snow amounts, densities, and incidence angles. The  $2\pi$  wrapping point data are annotated. Slices through the cube are shown for a constant  $200 \text{ kg m}^{-3}$  density (red, **b**), a constant 30 cm of new snow (yellow, **c**), a constant  $30^\circ$  incidence angle (purple, **d**), and a display of phase wrapping thresholds for varying incidence angles and new-snow heights at  $100$  and  $250 \text{ kg m}^{-3}$  densities (**e**).

#### 4 Sensitivity analysis

To explore how phase changes relate to snow properties at L-band, we calculated the theoretical phase change across physically reasonable ranges of snow depth change (0–0.5 m), new-snow density ( $100$ – $300 \text{ kg m}^{-3}$ ), and incidence angles ( $30$ – $60^\circ$ ) (Fig. 7). These results show that phase wrapping should not occur until quite significant snow accumulations of 127 mm of SWE at  $30^\circ$  and 80 mm at  $60^\circ$ .

Liquid water in the snowpack impacts the radar's wave speed and phase change and consequently causes errors in retrievals since we only parameterize the dielectric permittivity based on density. We parameterized the dielectric constant for dry and wet snow to evaluate the effect of liquid water. We evaluated the increase in retrieved snow depths with no actual increase for varying degrees of liquid water percentage (Tiuri et al., 1984). The impacts of liquid water in the snowpack are significant. They can cause up to an  $\approx 0.1$  m



**Figure 8.** (a) The theoretical dielectric permittivity for varying snow density (blue) and wetness (orange, constant  $300 \text{ kg m}^{-3}$  density) using the equations from Tiuri et al. (1984). (b) SWE retrieval errors caused by 0.1 m of SWE that increased by varying liquid water percentages in wetness between SAR images.

overestimation of new-snow accumulation in the retrievals, with only 0.1 m of snow becoming wet (Fig. 8).

## 5 Results

We compare UAVSAR-retrieved SWE and snow depths against SNOTEL SWE and snow depth changes, SWE and snow depth changes from consistently located snow pits, interval board SWE increases, and SnowModel's SWE change.

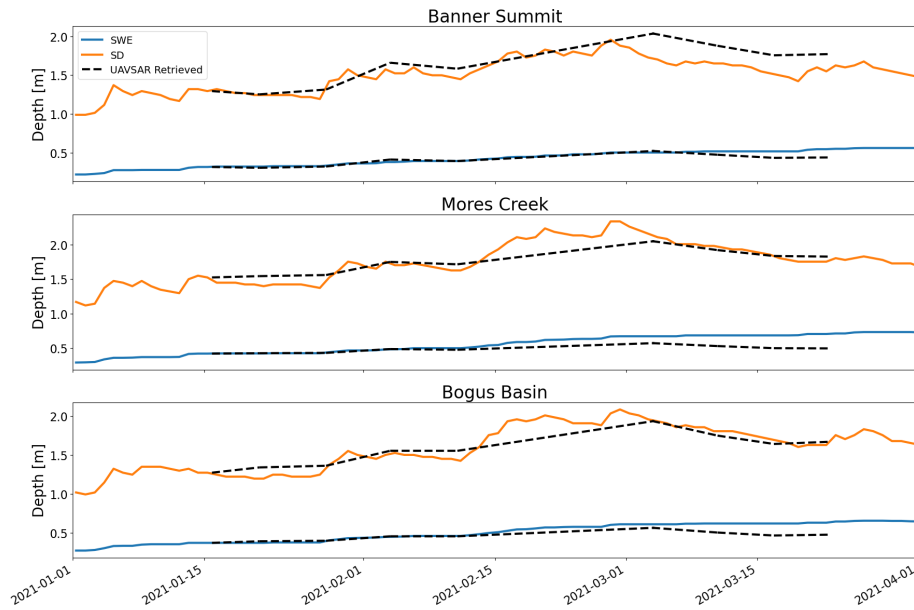
### 5.1 SNOTEL visualization

The time series of snow depth from our three SNOTEL sites matches well against our retrieved UAVSAR time series. Since we had longer temporal separations between our UAVSAR observations, some short-temporal-scale patterns were missed. Overall, the trends and magnitudes of snow depth accumulation are well captured (Fig. 9).

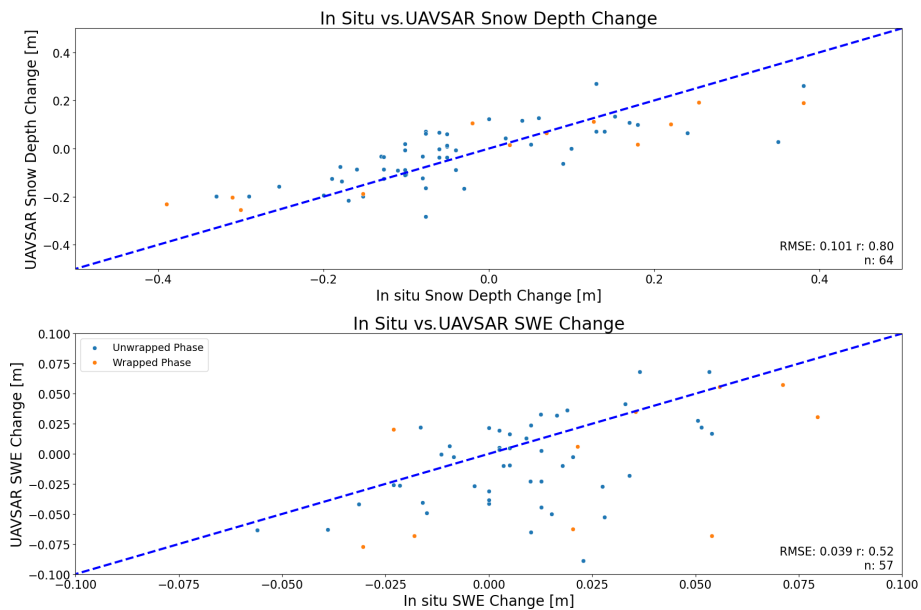
### 5.2 In situ comparison

An expanded comparison, including snow pit and SNOTEL data, shows a positive agreement between retrieved and in situ snow depth observations with an RMSE of 0.1 m and a Pearson correlation of 0.80 ( $n = 64$ ) (Fig. 10). The bootstrapped analysis had a 95% confidence interval for the RMSE of 0.09–0.11 m, with a mean RMSE of 0.10 m, Pearson correlation of 0.71 to 0.87, and bias confidence interval of  $-0.028$  to  $0.012$  m. The full SWE retrievals were more scattered with an RMSE of 0.041 m and a Pearson correlation of 0.4 ( $n = 64$ ). Removing in situ retrievals with unreasonably high ( $> 500 \text{ kg m}^{-3}$ ) inferred density from the in situ-measured SWE and snow depth change improves the RMSE to 0.039 and the Pearson correlation to 0.52 ( $n = 57$ ).





**Figure 9.** SNOTEL in situ-measured snow depth profile plotted against the cumulative retrieved UAVSAR snow depth changes for a 100 m box around each SNOTEL location. Note that the initial snow depth was set to the in situ-measured snow depth at the first flight date in 2021.



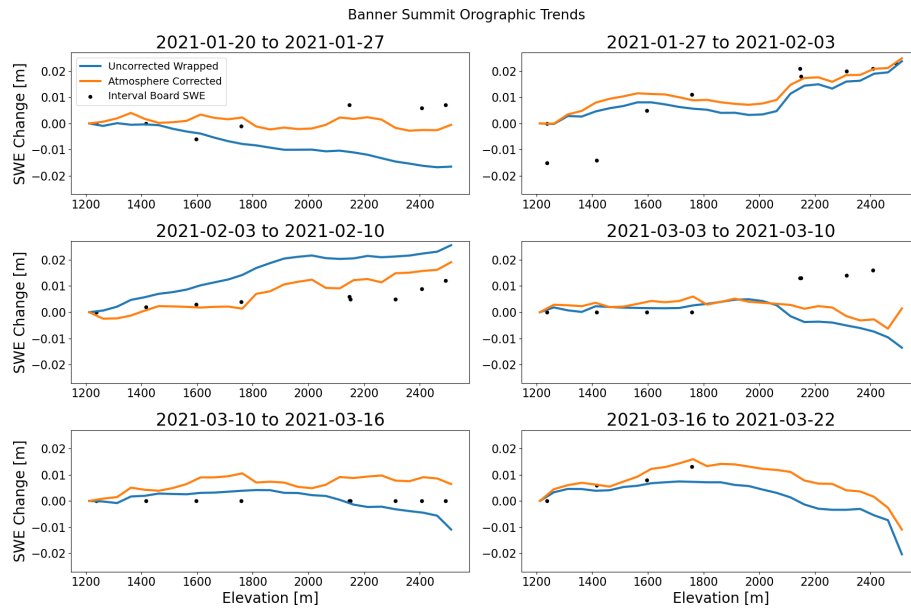
**Figure 10.** Comparison of the UAVSAR snow depth retrievals to in situ snow depth and SWE change measurements. In situ observations without successful phase unwrapping used the wrapped phase in orange. Note that seven SWE change observations were removed for having measured in situ new-snow densities above  $500 \text{ kg m}^{-3}$ .

### 5.3 Comparison to interval boards

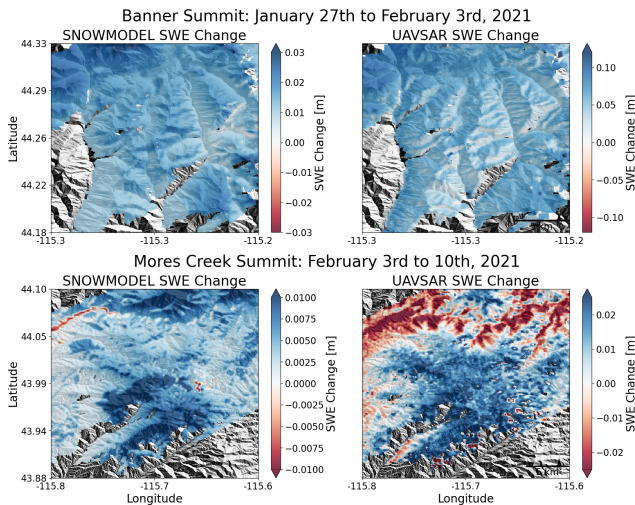
The UAVSAR-retrieved SWE changes captured the overall trends in precipitation relative to elevation for most image pairs, with the atmospherically corrected trends in SWE change generally improving the relationship to the measured orographic trends (Fig. 11).

### 5.4 Comparison to SnowModel

We first qualitatively compared the SnowModel SWE changes to those captured in the phase images for two periods of increasing SWE with successful phase unwrapping near the Banner Summit and the Mores Creek SNOTEL sites (Fig. 12). Both examples showed similar accumulation patterns to SnowModel but consistently more significant SWE



**Figure 11.** Comparison between the retrieved UAVSAR SWE changes with elevation relative to the interval board data sets on SWE changes with elevation. Note the consistent y limits for all subplots.



**Figure 12.** Comparison of the UAVSAR and SnowModel SWE changes for two accumulation periods near the Banner Summit and Mores Creek SNOTEL sites. Note the different visualization ranges for the SnowModel and UAVSAR SWE changes.

changes in the UAVSAR-retrieved SWE changes than SnowModel.

The relationship between the SnowModel and UAVSAR SWE change for all the successfully unwrapped pixels showed large regions of highly negative SWE changes in the retrieved data. However, subsetting to only pixels with no SWE melt in SnowModel results removed these regions, suggesting that large areas of wet snow were causing bias or low coherence in the SWE change retrievals (Fig. 13).

The spatial maps of RMSD between the SnowModel and retrieved SWE changes show much higher RMSDs at lower elevations along the valley bottoms, in regions to the south-east with higher average SWE melt, and along higher elevations with higher maximum SWE values (Fig. 14).

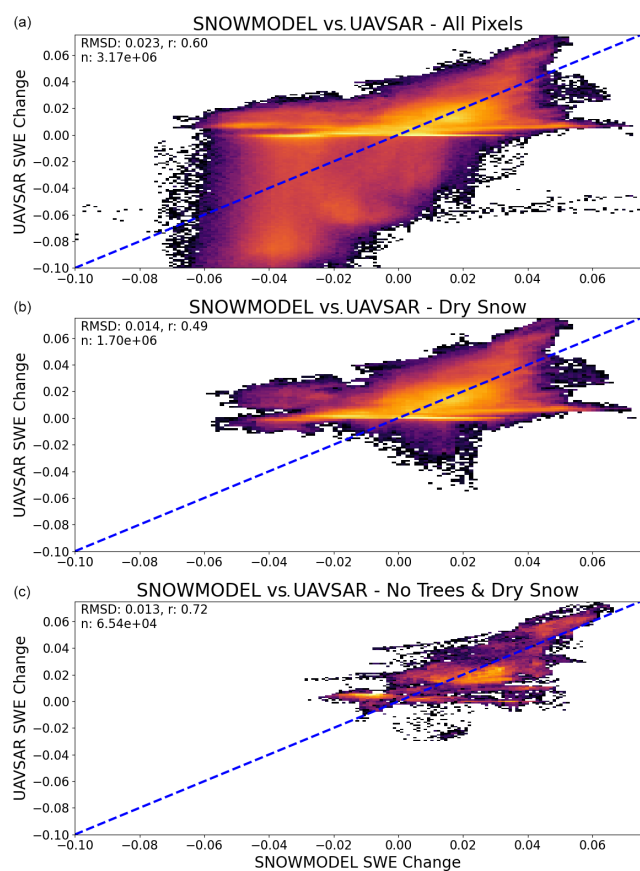
The binned analysis of RMSD generally agreed with the spatial comparison with improving RMSD for higher elevations, steeper incidence angles, lower tree heights and coverage percentage, higher coherences, and lower cumulative melt quantities (Fig. 15).

## 6 Discussion

### 6.1 How accurate are L-band SWE and snow depth change retrievals over complex mountain terrain?

Our results suggest that L-band InSAR is a promising technique for retrieving snow depth changes over complex mountainous terrain. The comparison between in situ snow depth changes compared to retrieved snow depths shows a strong correlation,  $r = 0.80$ , and reasonable errors,  $RMSE = 0.10$  m. The comparison to the modeled SWE changes also showed good correlation and low RMSD ( $RMSD = 0.041$  m,  $r = 0.49$ ). This comparison was even more favorable in dry snow with low tree coverage ( $RMSD = 0.014$  m,  $r = 0.72$ ). These results suggest that L-band InSAR snow depth change retrievals capture reasonable trends and may be a valuable tool for measuring SWE and snow depth changes.

It is interesting that the retrieved SWE changes compared worse ( $r = 0.40$ ) relative to the snow depth change



**Figure 13.** Two-dimensional log-scaled heat maps showing UAVSAR vs. SnowModel SWE changes for all possible unwrapped pixels (a), subset to only pixels with no modeled melt (b), and subset to pixels with no modeled melt in regions with less than 20 % tree percentage (c).

( $r = 0.80$ ) for the in situ results. This may have been the result of errors in field measurements due to the challenges of measuring SWE changes in the field relative to measuring snow depth changes. In fact a number of observations had unreasonably high new-snow densities ( $> 500 \text{ kg m}^{-3}$ ), suggesting either a large rain event or measurement error occurred.

## 6.2 How do vegetation, incidence angle, slope, and snow wetness impact the accuracy of L-band retrievals?

The predominant factors in the accuracy of this retrieval technique are the need for dry snow and avoiding high vegetation coverage. The highest RMSDs relative to the modeled data occurred in pixels with high tree cover percentages and large amounts of modeled SWE melt, suggesting that wet snow and vegetation may be negatively effecting retrievals.

The negative impacts on accuracy due to liquid water match our theoretical expectations. Since we parameterize the real component of the snow's dielectric permittivity

based solely on density, we expect retrievals of snow depth changes in newly wet snow to diverge from in situ and modeled measurements. This divergence will impact not only the measurements at that specific location but also throw off the mean phase change of the image, leading to systemic biases across the image when setting the reference phase. Additionally, liquid water causes significant drops in coherence, which may also have negatively impacted our retrievals (Ruiz et al., 2022). Future researchers could improve retrievals by using modeled melt values to improve the parameterization of potentially wet pixels.

The impact of vegetation also matches the theoretical expectation that the increase in scatterers in the vegetation, primarily branches and trunks at L-band, would cause a decrease in the coherence of those pixels due to more random movements of the scatterers within the pixel and a shifting of the phase centroid up towards the above-snow scatterers, breaking our theoretical requirement of a phase centroid at or close to the snow–ground interface. Interestingly Fig. 15 showed a minimal relationship between coherence and RMSD above 0.35 m, suggesting that the decrease in coherence might have been a smaller factor.

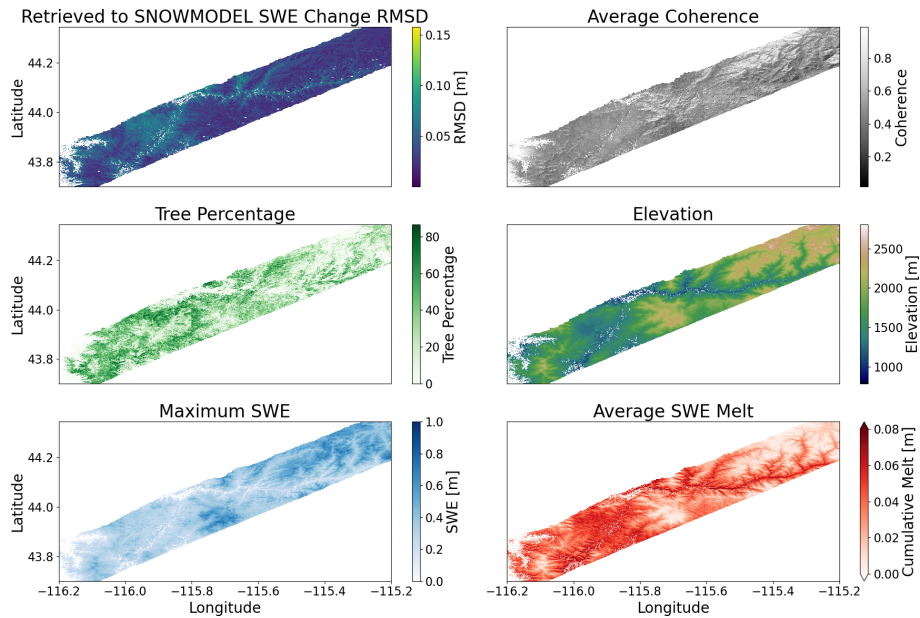
Alternatively, the model performs worse in the trees, meaning that the increase in RMSE is due to errors in the modeled data rather than UAVSAR retrievals. The lack of a clear relationship in the in situ data between the vegetation classification at the snow pit and retrieval accuracy also suggests that vegetation impacts may be less significant.

The elevation and incidence angle were other factors related to the retrieval accuracy. The impact of elevation is most likely due to its covariance with liquid water in the snowpack and tree coverage in the scene. Incidence angle was negatively correlated with RMSE. Referring to Fig. 7, we see that for a constant change in SWE, the induced phase shift is less at lower incidence angles. This decreased phase signal is closer to the instrument noise floor, and we may struggle to capture these small snow depth changes.

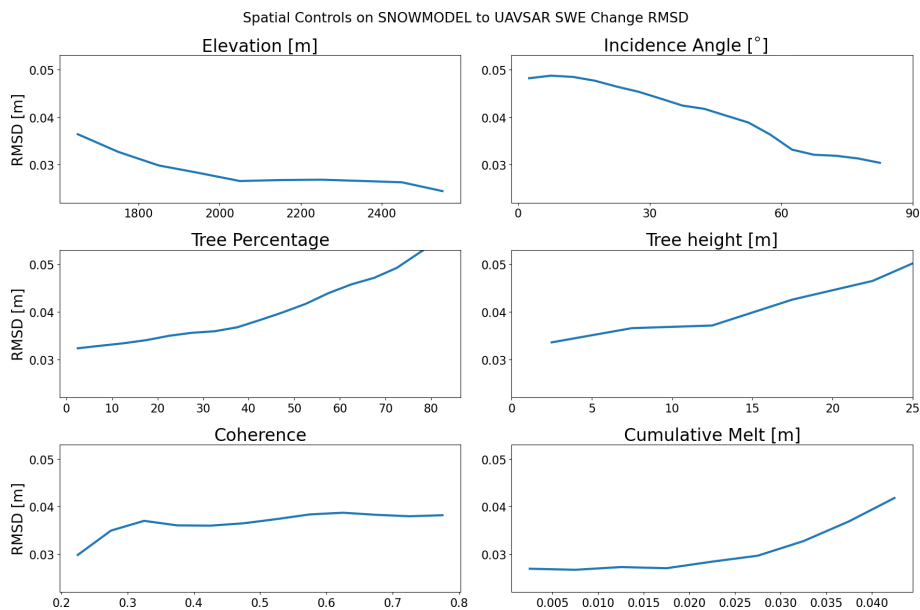
## 6.3 Limitations

This study has a few limitations that should be addressed: the accuracy of SnowModel for comparison, using density in our retrievals of snow depth, and setting the reference phase with the in situ data used for validation.

The SnowModel results used in this analysis showed a reasonable correlation to in situ results ( $r = 0.45$ ; RMSE: 0.15 m), but errors that we attribute to the InSAR results in Fig. 15 (in highly vegetated or wet-snow regions) are actually some unknown combination of modeling and InSAR retrieval errors compounding. Future work using either more validated SnowModel results or lidar snow depth retrievals will be necessary, and our study's modeling comparison should be interpreted with caution, focusing mostly on identifying larger spatial and temporal trends in accumulation.



**Figure 14.** Spatial distribution of the RMSD between the SnowModel and wrapped UAVSAR SWE changes, coherence averaged across all time periods, National Land Cover Database (NLCD) tree cover percentage, SRTM elevation, the modeled maximum SWE depth, and average SWE melt across all time periods.



**Figure 15.** Binned distribution of the RMSD between the SnowModel and wrapped UAVSAR SWE changes, coherence averaged across all time periods, NLCD tree cover percentage, SRTM elevation, the modeled maximum SWE depth, and average SWE melt across all time periods.

We chose to use aggregated measurements of in situ snow density to directly invert Eq. (1) for snow depth and SWE changes. We chose to do this to allow us to compare to our in situ snow depth measurements and due to the low sensitivity to errors in our density approximation discussed in Sect. 1.1. However, unlike studies that use SWE approximations, this

means that our methods require some approximation of density from either in situ or modeled results to replicate in new study areas (Guneriusen et al., 2001; Oveisgharan et al., 2024).

Another consideration is that we set the reference phase using the average snow depth change and density from across

our in situ observations and the average phase of snow-covered regions for each InSAR pair (see Sect. 3.2) and then used the same in situ observations for validation. Since we are using the reference phase from the whole image and aggregating snow change across multiple sites, there should not be too much biasing of our results, but it is important to know that the calibration and validation data were the same data. We chose to set the reference phase this way due to the limited number of repeat observations ( $n = 64$ ) available to use and to avoid biasing a whole image from errors in a single in situ measurement, but future work should explore the impacts and methods of setting the reference phase.

#### 6.4 Future work

Future research and practical applications of InSAR-based SWE retrievals should consider (1) the importance of atmospheric corrections, (2) how to integrate this technique into pre-existing hydrologic monitoring efforts, (3) effective use of in situ data for processing and validating these InSAR retrievals, (4) image masking in wet and low-coherence regions, (5) validating these findings with different snow climates and vegetation profiles, (6) the use of the wrapped vs. unwrapped phase, (7) parameterizations for the dielectric permittivity in wet snow, and (8) how best to incorporate other frequencies and SAR-based analysis techniques.

Atmospheric correction of InSAR data to account for temporal and spatial variations in radar wave speeds through the atmosphere due to pressure, temperature, and moisture changes is critical for accurately capturing SWE changes. Due to the relationship between elevation and path length in airborne and spaceborne InSAR systems, the atmospheric phase changes will often have similar patterns to orographic precipitation. This relationship makes the removal of the atmospheric phase critical to accurately capturing SWE change patterns over large areas, especially the accumulation gradient with elevation. The fact that SWE change correlates with elevation also means that practitioners should avoid atmospheric corrections that rely on removing phase vs. elevation relationships, which is common in other InSAR applications. Atmospheric corrections should use atmospheric modeling to generate atmospheric phase delays for corrections. Alternatively, time-series-based analysis, such as small-baseline-subset analysis, would also remove temporally random atmospheric effects. However, this will be primarily retrospective after a sufficient winter time series has been captured and relies on enough temporal coherence between image pairs. Regardless, the atmospheric effects must be considered and corrected for in any practical application of InSAR SWE retrievals. Future work should include interval board measurements over a wide elevation range to identify the correct phase gradient for the InSAR retrieval.

Future work should also focus on how to best use these phase-based SWE change measurements to supplement and expand existing snow monitoring techniques in periods and

regions where the technique is most appropriate. These include accumulation periods when non-maritime snowpack tends to be drier and in higher alpine regions with fewer trees and drier snow. Spatially, practitioners could continue to use pre-existing SNOTEL and snow-survey interpolation techniques below treeline where they are more appropriate due to less spatial variability and more uniform elevation gradients in SWE accumulation. In the complex alpine environment above the treeline and in regions with less vegetation, practitioners could apply InSAR retrievals to improve the pre-existing models and capture variability and changes in SWE storage. Temporally, this technique will improve monitoring efforts in the accumulation period when current models struggle to appropriately characterize the patterns and magnitudes of precipitation events, especially in complex terrain with large amounts of wind redistribution. These InSAR phase changes will help constrain those SWE accumulation patterns before taking a less weighted effect later in the season when SWE melt-off is generally well defined by snow models. Integrating InSAR SWE retrievals into existing water monitoring systems will only improve results when appropriately applied, considering the strengths and weaknesses of the technique. Practitioners, considering the limitations mentioned above, could consider InSAR retrievals to be essentially spatially expansive, relevant, and remotely sensed SNOTEL sites.

The locations and setup for the next generation of in situ monitoring stations should also consider the needs and potential of InSAR-based SWE retrievals. Currently, snow monitoring relies on a few heavily instrumented stations to characterize entire basins. Future research should evaluate the utilization of higher densities of simply instrumented in situ stations, capturing only temperature and snow depth, across a smaller region to characterize and validate a small patch of remotely sensed data and modeling results. This smaller region would need to be carefully selected within each study basin to cover the dynamic range of controlling factors including incidence angle, aspect, elevation, and vegetation characteristics. Water forecasters could then rely on that well-validated and calibrated remotely sensed data and model output to forecast across larger regions. Specifically for InSAR phase validation, this could involve capturing SWE change over a range of elevations and aspects to validate atmospheric corrections, confirm the spatial patterns in the InSAR imagery, and remove or correct those affected by low coherence, atmospheric effects, and other biases. Future in situ monitoring sites should consider how their placements and instrumentation complements remote sensing techniques and allows for synergistic combinations with the new tools available to practitioners.

Future research should also evaluate how to convert intuition-based manual checks into automated systems for validating InSAR phase retrievals and ensuring believable spatial trends and magnitude. Most practitioners will have an intuition about likely spatial trends in precipitation that they

can initially use to identify image pairs or subregions biased by low coherence, unwrapping errors, or biases from snow wetness within the image. Successful application of this technique will involve finding ways to convert that intuition-based error checking and masking of regions or image pairs into automated checks of the InSAR phase that will control for images with unrealistic results to limit the biasing effects of these errors in any future processing pipelines.

Our study location, in the central mountains of Idaho, has a transitional snow climate with more mid-winter rain and SWE melt to the southwest and a colder, often deeper, snowpack to the northeast – vegetation patterns that are highly aspect and elevation dependent and range from high-density evergreen to sagebrush to alpine treeless regions. Future work should explore this technique in maritime and continental snowpacks and other vegetation classes, such as tundra or agricultural regions. The SnowEx data provide an opportunity to test this approach in a range of snow climates, and our future work will expand this analysis across the entire SnowEx domain.

A specific challenge of InSAR SWE retrievals is that in regions with large spatial variability the unwrapped phase will be necessary to capture trends across large areas. If the wrapped phase is used, there may be regions that “wrap” to unreasonably low or high changes. However, phase unwrapping is computationally expensive, it can introduce errors in regions of low coherence, and at low frequencies the scene-wide change variability may be effectively captured by the wrapped phase. Future work should investigate how often we will need to unwrap the InSAR phase to effectively capture snow accumulations and the best methods for unwrapping in snow-covered regions.

We noted significant adverse effects on the correlation between our results and SnowModel SWE changes for periods and regions with wet-snow effects. We did not attempt to parameterize or correct, potentially using modeled or elevation-based snow wetness, for these impacts. Future work on retrieval improvements that characterize and account for snow wetness impacts will be essential to expand this technique into lower elevations and ablation periods, which will become increasingly important with the more frequently observed mid-winter rain and melt events at greater ranges of elevations.

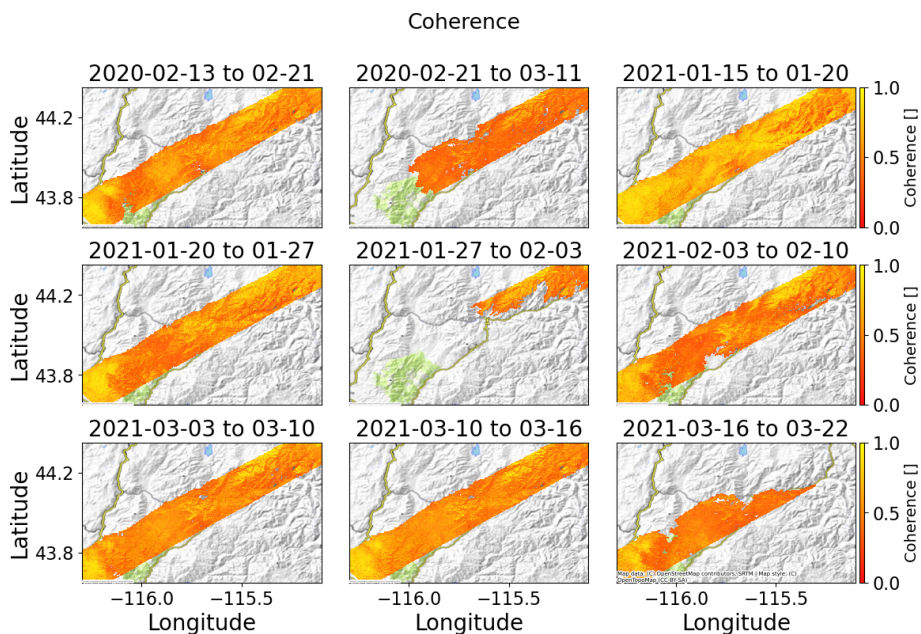
Finally, a range of other frequencies and SAR techniques exist that could be combined with this technique to improve retrievals and supplement the weaknesses of this technique. Future work should explore snow-depth-based surface topography approaches (SfM, lidar) in periods of wet snow, higher-frequency backscatter-based approaches, and snow properties’ relationship to coherence and polarimetry.

## 7 Conclusions

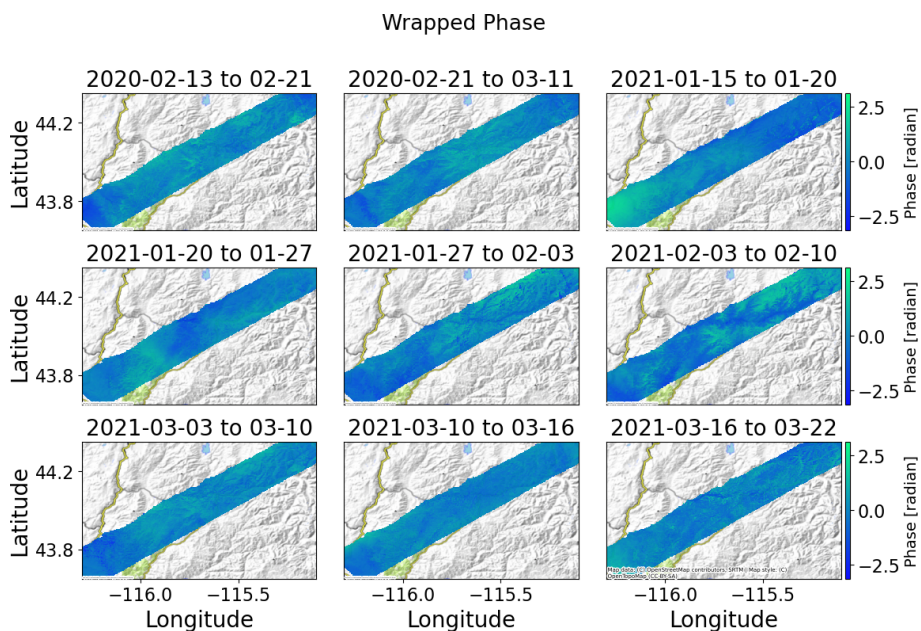
We present a novel comparison of a full winter season time series of L-band InSAR SWE retrievals against in situ and modeled validation data sets. Our technique shows promise, capturing trends and absolute values of new-snow accumulation. We show well-matched snow depth and SWE time series from the UAVSAR-retrieved values when compared against three SNOTEL stations. Comparisons between in situ observations, captured during the NASA 2020 and 2021 SnowEx campaigns, and UAVSAR retrievals showed high correlation and low RMSEs for snow depth changes (RMSE:  $< 0.1$  m;  $r$ : 0.80) and SWE change (RMSE:  $< 0.04$  m;  $r$ : 0.52). The UAVSAR images also captured orographic trends in new SWE accumulations well when compared to an interval board network setup across a large elevation range for multiple storms. Finally, comparison to SnowModel SWE changes also suggests the L-band InSAR was realistically capturing SWE accumulation with strong correlation between the two (RMSD  $< 0.023$  m;  $r$ : 0.60) and an especially good relationship in regions with limited snowmelt and lower vegetation percentages (RMSD  $< 0.013$  m;  $r$ : 0.72). Using this SnowModel-to-UAVSAR comparison, this study explored the controlling factors of this technique’s accuracy, including the importance of appropriately applying this technique in regions of relatively dry snow and lower vegetation percentages based on a comparison to SnowModel SWE change and SWE melt. Overall this study demonstrates the promise of using future L-band InSAR missions for snow water storage monitoring across large regions and time periods.

**Appendix A: Coherence, wrapped, and unwrapped phase**

Figures showing the coherence (Fig. A1) and wrapped phase (Fig. A2) for the nine images used are presented below.



**Figure A1.** Coherence for the nine images used. Note that consistent color bounds between zero and one are used for all subplots and that the images were masked to successfully unwrapped regions.



**Figure A2.** Wrapped phases for the nine images used. Note that consistent color bounds between negative  $\pi$  and positive  $\pi$  are used for all subplots with all means normalized to zero.

*Code availability.* Research code for this study is available at <https://doi.org/10.5281/zenodo.10407311> (Hoppinen, 2023).

*Data availability.* The UAVSAR imagery is available at the JPL data repository: <https://uavsar.jpl.nasa.gov/cgi-bin/data.pl> (NASA, 2024). Snow pits are available at the NSIDC: <https://doi.org/10.5067/POT9E0FFUUD1> (Mason et al., 2023). SNOTEL data are available from the US Department of Agriculture. SnowModel data sets are available on request.

*Author contributions.* Conceptualization: SO, ZH, and HPM. Writing: ZH and RM. Analysis: ZH. Model generation: RM. Funding acquisition: HPM and CV. Planning: HPM, CV, and KE. Editing: ZH, HPM, KE, and CV.

*Competing interests.* At least one of the (co-)authors is a member of the editorial board of *The Cryosphere*. The peer-review process was guided by an independent editor, and the authors also have no other competing interests to declare.

*Disclaimer.* Publisher's note: Copernicus Publications remains neutral with regard to jurisdictional claims made in the text, published maps, institutional affiliations, or any other geographical representation in this paper. While Copernicus Publications makes every effort to include appropriate place names, the final responsibility lies with the authors.

*Acknowledgements.* We wish to thank our two referred reviewers (Andrea Manconi and Mathieu Le Breton) and one public reviewer (Jorge Ruiz) for their time and thoughtful comments.

*Financial support.* This research has been supported by the Cold Regions Research and Engineering Laboratory (grant no. W913E520C0017).

*Review statement.* This paper was edited by Nora Helbig and reviewed by Mathieu Le Breton and Andrea Manconi.

## References

- Carriere, L.: Discover SCU Hardware, NASA, <https://www.nccs.nasa.gov/systems/discover/scu-info> (last access: March 2023), 2023.
- Cohen, J., Ye, H., and Jones, J.: Trends and variability in rain-on-snow events, *Geophys. Res. Lett.*, 42, 7115–7122, 2015.
- Deeb, E., Forster, R., and Kane, D.: Monitoring snowpack evolution using interferometric synthetic aperture radar on the North Slope of Alaska, USA, *Int. J. Remote Sens.*, 32, 3985–4003, 2011.
- Doin, M. P., Lasserre, C., Peltzer, G., Cavalié, O., and Doubre, C.: Corrections of stratified tropospheric delays in SAR interferom-

- etry: Validation with global atmospheric models, *J. Appl. Geophys.*, 69, 35–50, 2009.
- Dominguez, F., Rivera, E., Lettenmaier, D. P., and Castro, C. L.: Changes in winter precipitation extremes for the western United States under a warmer climate as simulated by regional climate models, *Geophys. Res. Lett.*, 39, L05803, <https://doi.org/10.1029/2011GL050762>, 2012.
- Fore, A. G., Chapman, B. D., Hawkins, B. P., Hensley, S., Jones, C. E., Michel, T. R., and Muellerschoen, R. J.: UAVSAR Polarimetric Calibration, *IEEE T. Geosci. Remote*, 53, 3481–3491, 2015.
- Gesch, D., Oimoen, M. J., and Arundel, S.: The National Elevation Dataset, USGS Publication Warehouse, Geological Survey (U.S.), <https://doi.org/10.3133/fs14899>, 2018.
- Goldstein, R. M., Zebker, H. A., and Werner, C. L.: Satellite radar interferometry: Two-dimensional phase unwrapping, *Radio Sci.*, 23, 713–720, <https://doi.org/10.1029/rs023i004p00713>, 1988.
- Greene, E., Birkeland, K., Elder, K., McCammon, I., Staples, M., Sharaf, D., Trautman, S., and Wagner, W.: Snow, Weather, and Avalanches: Observation Guidelines for Avalanche Programs in the United States, Denver, Colorado, 4th edn., American Avalanche Association, ISBN 78-0-9760118-1-1, 2022.
- Guneriussen, T., Hogda, K. A., Johnsen, H., and Lauknes, I.: Insar for Estimation of Changes in Snow Water Equivalent of Dry Snow, *IEEE T. Geosci. Remote*, 39, 2101, <https://doi.org/10.1109/36.957273>, 2001.
- Hensley, S., Wheeler, K., Sadowy, G., Jones, C., Shaffer, S., Zebker, H., Miller, T., Heavey, B., Chuang, E., Chao, R., Vines, K., Nishimoto, K., Prater, J., Carrico, B., Chamberlain, N., Shimada, J., Simard, M., Chapman, B., Muellerschoen, R., Le, C., Michel, T., Hamilton, G., Robison, D., Neumann, G., Meyer, R., Smith, P., Granger, J., Rosen, P., Flower, D., and Smith, R.: THE UAVSAR Instrument: Description and first results, 2008 IEEE Radar Conf., 26–30 May 2008. Rome, Italy, 1–6, 2008.
- Hersbach, H., Bell, B., Berrisford, P., Hirahara, S., Horányi, A., Muñoz-Sabater, J., Nicolas, J., Peubey, C., Radu, R., Schepers, D., Simmons, A., Soci, C., Abdalla, S., Abellan, X., Balsamo, G., Bechtold, P., Biavati, G., Bidlot, J., Bonavita, M., Chiara, G., Dahlgren, P., Dee, D., Diamantakis, M., Dragani, R., Flemming, J., Forbes, R., Fuentes, M., Geer, A., Haimberger, L., Healy, S., Hogan, R. J., Hólm, E., Janisková, M., Keeley, S., Laloyaux, P., Lopez, P., Lupu, C., Radnoti, G., Rosnay, P., Rozum, I., Vamborg, F., Villaume, S., and Thépaut, J. N.: The ERA5 global reanalysis, *Q. J. Roy. Meteor. Soc.*, 146, 1999–2049, 2020.
- Homer, C., Dewitz, J., Yang, L., Jin, S., Danielson, P., Xian, G., Coulston, J., Herold, N., Wickham, J., and Megown, K.: Completion of the 2011 National Land Cover Database for the Conterminous United States – Representing a Decade of Land Cover Change Information, *Photogrammetric Eng. Remote Sens.*, 81, 346–354, 2015.
- Hoppinen, Z.: ZachHoppinen/uavsar-validation: The Cryosphere Publication (v1.0.0), Zenodo [code], <https://doi.org/10.5281/zenodo.10407311>, 2023.
- Hoppinen, Z., Tarricone, J., Abedisi, N., and Marshall, H. P.: SnowEx/uavsar\_pytools: v0.2.0, Zenodo [code], <https://doi.org/10.5281/zenodo.6789624>, 2022.
- Jin, S., Homer, C., Yang, L., Danielson, P., Dewitz, J., Li, C., Zhu, Z., Xian, G., and Howard, D.: Overall Methodology Design for the United States National Land Cover Database 2016 Products,



- Remote Sens., 11, 2971, <https://doi.org/10.3390/rs11242971>, 2019.
- Kunkel, K. E., Robinson, D. A., Champion, S., Yin, X., Estilow, T., and Frankson, R. M.: Trends and Extremes in Northern Hemisphere Snow Characteristics, *Curr. Clim. Change Rep.*, 2, 65–73, 2016.
- Latifovic, R., Homer, C., Ressler, R., Pouliot, D. A., Hossain, S., Colditz, R., Olthoff, I., Chandra, G., and Victoria, A. (Eds.): North American Land Change Monitoring System, U.S. Geological Survey, 05, 303–324, <https://doi.org/10.1201/b11964-24>, 2012.
- Leinss, S., Wiesmann, A., Lemmetyinen, J., and Hajnsek, I.: Snow Water Equivalent of Dry Snow Measured by Differential Interferometry, *IEEE J. Sel. Top. Appl. Earth Obs.*, 8, 3773–3790, 2015.
- Li, H., Wang, Z., He, G., and Man, W.: Estimating Snow Depth and Snow Water Equivalence Using Repeat-Pass Interferometric SAR in the Northern Piedmont Region of the Tianshan Mountains, *J. Sensors*, 2017, 1–17, 2017.
- Liston, G. E. and Elder, K.: A Distributed Snow-Evolution Modeling System (SnowModel), *J. Hydrometeorol.*, 7, 1259–1276, 2006.
- Liston, G. E., Stroeve, J., Buzzard, S., Zhou, L., Mallett, R., Barrett, A., Tschudi, M., Tsamados, M., Itkin, P., and Stewart, J.: A Lagrangian Snow-Evolution System for Sea Ice Applications (SnowModel-LG): Part II – Analyses, *J. Geophys. Res.-Oceans*, 125, 10, <https://doi.org/10.1029/2019JC015913>, 2020.
- Livneh, B. and Badger, A. M.: Drought less predictable under declining future snowpack, *Nat. Clim. Change*, 10, 452–458, 2020.
- Marshall, H. P., Deeb, E., Forster, R., Vuyovich, C., Elder, K., Hiemstra, C., and Lund, J.: L-Band InSAR Snow Depth Retrievals from Grand Mesa in NASA SnowEX 2020 Campaign, *Instit. of Electrical and Electronics Engineers*, 2021.
- Mason, M., Marshall, H., McCormick, M., Craaybeek, D., Elder, K., and Vuyovich, C. M.: SnowEx20 Time Series Snow Pit Measurements, Version 1, Boulder, Colorado USA, NASA National Snow and Ice Data Center Distributed Active Archive Center [data set], <https://doi.org/10.5067/POT9E0FFUUD1>, 2023.
- Matzler, C.: Microwave permittivity of dry snow, *IEEE T. Geosci. Remote*, 34, 573–581, 1996.
- Mower, R., Gutmann, E. D., Lundquist, J., Liston, G. E., and Rasmussen, S.: Parallel SnowModel (v1.0): a parallel implementation of a Distributed Snow-Evolution Modeling System (SnowModel), *EGU sphere* [preprint], <https://doi.org/10.5194/egusphere-2023-1612>, 2023.
- Naderpour, R., Schwank, M., Houtz, D., Werner, C., and Mätzler, C.: Wideband Backscattering From Alpine Snow Cover: A Full-Season Study, *IEEE T. Geosci. Remote*, 60, 1–15, <https://doi.org/10.1109/tgrs.2021.3112772>, 2022.
- Nagler, T., Rott, H., Scheiblauer, S., Libert, L., Mölg, N., Horn, R., Fischer, J., Keller, M., Moreira, A., and Kubanek, J.: Airborne Experiment on InSAR Snow Mass Retrieval in Alpine Environment, *IGARSS 2022 – 2022 IEEE Int. Geosci. Remote Sensing Symposium*, 00, 4549–4552, 2022.
- NASA: UAVSAR Data Search, NASA Jet Propulsion Laboratory [data set], <https://uavsar.jpl.nasa.gov/cgi-bin/data.pl> (last access: August 2023), 2024.
- Oveisharan, S., Zinke, R., Hoppinen, Z., and Marshall, H. P.: Snow water equivalent retrieval over Idaho – Part 1: Using Sentinel-1 repeat-pass interferometry, *The Cryosphere*, 18, 559–574, <https://doi.org/10.5194/tc-18-559-2024>, 2024.
- Potapov, P., Li, X., Hernandez-Serna, A., Tyukavina, A., Hansen, M. C., Kommareddy, A., Pickens, A., Turubanova, S., Tang, H., Silva, C. E., Armston, J., Dubayah, R., Blair, J. B., and Hofton, M.: Mapping global forest canopy height through integration of GEDI and Landsat data, *Remote Sens. Environ.*, 253, 112165, <https://doi.org/10.1016/j.rse.2020.112165>, 2021.
- Rasmussen, R. M., Chen, F., Liu, C., Ikeda, K., Prein, A., Kim, J., Schneider, T., Dai, A., Gochis, D., Dugger, A., Zhang, Y., Jaye, A., Dudhia, J., He, C., Harrold, M., Xue, L., Chen, S., Newman, A., Dougherty, E., Abolafia-Rozenzweig, R., Lybarger, N., Viger, R., Dunne, K. A., Rasmussen, K., and Miguez-Macho, G.: Four-kilometer long-term regional hydroclimate reanalysis over the conterminous United States (CONUS), 1979–2020, Research Data Arc. at the Nat. Center for Atm. Research, Computational and Information Systems Lab., USGS, <https://doi.org/10.5066/P9PHPK4F>, 2023.
- Rosen, P. A., Hensley, S., Joughin, I. R., Li, F. K., Madsen, S. N., Rodrigues, E., Goldstein, R. M., Bamler, R., and Hartl, P.: Synthetic aperture radar interferometry, *Proc. IEEE*, 88, 333–382, <https://doi.org/10.1088/0266-5611/14/4/001>, 2000.
- Rosen, P. A., Hensley, S., Wheeler, K., Sadowy, G., Miller, T., Shaffer, S., Muellerschoen, R., Jones, C., Zebker, R. H., and Madsen, S.: UAVSAR: A New NASA Airborne SAR System for Science and Technology Research, 2006 IEEE Conf. on Radar, 24–27 April 2006, Verona, NY USA, 22–29, 2006.
- Ruiz, J., Lemmetyinen, J., Kontu, A., Tarvainen, R., Pulliainen, J., Vehmas, R., and Praks, J.: Analysis of Snow Coherence Conservation for SWE Retrieval at L-, S-, C- and X-Bands, 2021 IEEE Int. Geosci Remote Sens. Symposium IGARSS, 00, 860–863, 2021.
- Ruiz, J. J., Lemmetyinen, J., Kontu, A., Tarvainen, R., Vehmas, R., Pulliainen, J., and Praks, J.: Investigation of Environmental Effects on Coherence Loss in SAR Interferometry for Snow Water Equivalent Retrieval, *IEEE T. Geosci. Remote*, 60, 1–15, <https://doi.org/10.1109/tgrs.2022.3223760>, 2022.
- Schaefer, G. L. and Paetzold, R. F.: SNOTEL (SNOWpack TELEmetry) And SCAN (Soil Climate Analysis Network), Automated Weather Stations for Applications in Agriculture and Water Resources Management: Current Use and Future Perspectives, edited by: Sivakumar, M. V. K., World Meteorological Organization, <http://www.wamis.org/agm/pubs/agm3/WMO-TD1074.pdf> (last access: August 2023), 2000.
- Strapazzon, G., Schweizer, J., Chiambretti, I., Maeder, M. B., Brugger, H., and Zafren, K.: Effects of Climate Change on Avalanche Accidents and Survival, *Front. Physiol.*, 12, 639433, <https://doi.org/10.3389/fphys.2021.639433>, 2021.
- Sturm, M., Goldstein, M. A., and Parr, C.: Water and life from snow: A trillion dollar science question, *Water Resour. Res.*, 53, 3534–3544, 2017.
- Tarricone, J., Webb, R. W., Marshall, H.-P., Nolin, A. W., and Meyer, F. J.: Estimating snow accumulation and ablation with L-band interferometric synthetic aperture radar (InSAR), *The Cryosphere*, 17, 1997–2019, <https://doi.org/10.5194/tc-17-1997-2023>, 2023.
- Tiuri, M., Sihvola, A., Nyfors, E., and Hallikainen, M.: The complex dielectric constant of snow at microwave frequencies, *IEEE J. Ocean. Eng.*, 9, 377–382, 1984.

USDA Natural Resources Conservation Service: SNOW-pack TELEmetry Network (SNOTEL), NRCS [data set], <https://www.nrcs.usda.gov/wps/portal/wcc/home/aboutUs/snowProgramOverview> (last access: August 2023), 2022.