

## Predictors and Significance of Readmission after Esophagogastric Surgery

Evans, Richard pt; Kamarajah, Sivesh k; Evison, Felicity; Zou, Xiaoxu; Coupland, Ben; Griffiths, Ewen a

DOI:

[10.1097/AS9.0000000000000363](https://doi.org/10.1097/AS9.0000000000000363)

License:

Creative Commons: Attribution (CC BY)

### Document Version

Publisher's PDF, also known as Version of record

### Citation for published version (Harvard):

Evans, RP, Kamarajah, SK, Evison, F, Zou, X, Coupland, B & Griffiths, EA 2024, 'Predictors and Significance of Readmission after Esophagogastric Surgery: A Nationwide Analysis', *Annals of Surgery Open*, vol. 5, no. 1, e363. <https://doi.org/10.1097/AS9.0000000000000363>

[Link to publication on Research at Birmingham portal](#)

### General rights

Unless a licence is specified above, all rights (including copyright and moral rights) in this document are retained by the authors and/or the copyright holders. The express permission of the copyright holder must be obtained for any use of this material other than for purposes permitted by law.

- Users may freely distribute the URL that is used to identify this publication.
- Users may download and/or print one copy of the publication from the University of Birmingham research portal for the purpose of private study or non-commercial research.
- User may use extracts from the document in line with the concept of 'fair dealing' under the Copyright, Designs and Patents Act 1988 (?)
- Users may not further distribute the material nor use it for the purposes of commercial gain.

Where a licence is displayed above, please note the terms and conditions of the licence govern your use of this document.

When citing, please reference the published version.

### Take down policy

While the University of Birmingham exercises care and attention in making items available there are rare occasions when an item has been uploaded in error or has been deemed to be commercially or otherwise sensitive.

If you believe that this is the case for this document, please contact [UBIRA@lists.bham.ac.uk](mailto:UBIRA@lists.bham.ac.uk) providing details and we will remove access to the work immediately and investigate.

# Predictors and Significance of Readmission after Esophagogastric Surgery

## A Nationwide Analysis

Richard PT Evans, MBBS, FRCS,\*†, Sivesh K Kamarajah, MBChB, MRCS,\*‡, Felicity Evison, MSc,§, Xiaoxu Zou, PhD,§, Ben Coupland, MSc,§, and Ewen A Griffiths, MD, FRCS\*†

**Objective:** The aim of this study is to identify risk factors for readmission after elective esophagogastric cancer surgery and characterize the impact of readmission on long-term survival. The study will also identify whether the location of readmission to either the hospital that performed the primary surgery (index hospital) or another institution (nonindex hospital) has an impact on postoperative mortality.

**Background:** Over the past decade, the center-volume relationship has driven the centralization of major cancer surgery, which has led to improvements in perioperative mortality. However, the impact of readmission, especially to nonindex centers, on long-term mortality remains unclear.

**Methods:** This was a national population-based cohort study using Hospital Episode Statistics of adult patients undergoing esophagectomy and gastrectomy in England between January 2008 and December 2019.

**Results:** This study included 27,592 patients, of which overall readmission rates were 25.1% (index 15.3% and nonindex 9.8%). The primary cause of readmission to an index hospital was surgical in 45.2% and 23.7% in nonindex readmissions. Patients with no readmissions had significantly longer survival than those with readmissions (median: 4.5 vs 3.8 years;  $P < 0.001$ ). Patients readmitted to their index hospital had significantly improved survival as compared to nonindex readmissions (median: 3.3 vs 4.7 years;  $P < 0.001$ ). Minimally invasive surgery and surgery performed in high-volume centers had improved 90-day mortality (odds ratio, 0.75;  $P < 0.001$ ; odds ratio, 0.60;  $P < 0.001$ ).

**Conclusion:** Patients requiring readmission to the hospital after surgery have an increased risk of mortality, which is worsened by readmission to a nonindex institution. Patients requiring readmission to the hospital should be assessed and admitted, if required, to their index institution.

**Keywords:** esophagectomy, gastrectomy, readmission

## INTRODUCTION

Esophagectomy and gastrectomy are associated with significant morbidity and mortality.<sup>1,2</sup> Evidence has shown that in complex elective cancer surgery, there is an inverse relationship between hospital volume and surgical mortality, which has driven the centralization of esophagogastric surgical services in the UK.<sup>3–5</sup> The development and coordination of hub and spoke services have evolved to limit the number of low-volume units, which has led to improved perioperative

outcomes for patients. There have been concerns, however, that smaller peripheral hospitals that do not have a centralized resectional service subsequently lose the capability and experience to manage complex esophagogastric conditions and complications after surgery. In centralized services, pathways are built to minimize postoperative complication and readmission risk, yet despite this complications are frequent after esophageal and gastric resection with overall complication rates after esophagectomy and gastrectomy commonly as high as 60 and 30%, respectively.<sup>6,7</sup>

Readmission after esophagectomy occurs in 10% to 14% of cases, and patients who are not readmitted to their operative center often require transfer. Readmission after gastrectomy has been shown to be equally high at around 12%.<sup>8</sup> Clinical cause for readmission and status of the patient, local expertise, and geographic factors may all influence the location of readmission and the subsequent need and ability to facilitate transfer. Fragmentation of care and readmission to a nonindex hospital has been demonstrated to be associated with increased mortality after major cancer surgery.<sup>9</sup> Recognition and management of complications have been identified as key areas for improvement to minimize postoperative mortality. Concentrated expertise in centralized services has been associated with minimizing “failure to rescue.”<sup>10</sup> There is, however, limited information on the predictors and significance of readmission after elective esophagogastric surgery. Furthermore, the proportion and impact of readmission to a center that does not perform esophagectomy or gastrectomy is unknown.

The aim of this study is to identify risk factors for readmission and determine whether readmission impacts postoperative mortality. The secondary aim of this study is to determine whether the location of readmission to either the hospital that performed

From the \*Department of Upper Gastrointestinal Surgery, Queen Elizabeth Hospital, Birmingham, UK; †Institute of Immunology and Immunotherapy, University of Birmingham, UK; ‡Institute of Applied Health Research, University of Birmingham, UK; and §Health Data Science Team, Research and Development, Queen Elizabeth Hospital, Birmingham, UK.

Disclosure: The authors declare that they have nothing to disclose.

**SDC** Supplemental digital content is available for this article. Direct URL citations appear in the printed text and are provided in the HTML and PDF versions of this article on the journal's Web site ([www.annalsofsurgery.com](http://www.annalsofsurgery.com)).

Reprints: Ewen A Griffiths, Department of Upper Gastrointestinal Surgery, Area 6, 7th Floor, Queen Elizabeth Hospital Birmingham, Mindelsohn Way, Edgbaston, Birmingham, B15 2WB. Email: [e.griffiths.3@bham.ac.uk](mailto:e.griffiths.3@bham.ac.uk).

Copyright © 2024 The Author(s). Published by Wolters Kluwer Health, Inc. This is an open access article distributed under the Creative Commons Attribution License 4.0 (CCBY), which permits unrestricted use, distribution, and reproduction in any medium, provided the original work is properly cited.

Annals of Surgery Open (2024) 1:e363

Received: 11 September 2023; Accepted 28 October 2023

Published online 26 January 2024

DOI: 10.1097/AS9.0000000000000363

the primary surgery (index hospital) or another institution has an impact on postoperative mortality.

## METHODS

### *Inclusion, Exclusion Criteria, and Data Source*

This was a national population-based cohort study of adult patients undergoing National Health Service (NHS)-funded elective esophagectomy and gastrectomy for cancer in England between 2008 and 2019, using the Hospital Episodes Statistics Database (HES) for upper-gastrointestinal cancer. Patient outcome data including mortality was included until 12/2020, to ensure all patients had at least 12 months of follow-up. This study was registered with the local Clinical Audit Department (Clinical Audit Registration and Management System number 15126). Data were used in line with the data sharing agreement with NHS Digital.

HES data includes clinical information about diagnoses and operations patient information, such as age group, gender, and ethnicity, administrative information, such as dates and methods of admission and discharge, and geographical information, such as where patients are treated and the area where they live. Patient-specific HES identifiers enable patients to be tracked over multiple hospital admissions. Diagnoses are recorded using the International Classification of Disease version 10 codes, from which clinical comorbidity can be identified. NHS healthcare providers collect administrative and clinically relevant information to facilitate institute financial remuneration. Digital recording is performed by administrative staff within an institute coding department from various clinical sources, including discharge summaries, and radiological and operative databases. Mortality data is acquired via HES-linked Office for National Statistics data death data.

Patients with missing age or sex were excluded from analysis as these fields were used historically to derive the HES identifier. Patients who were not resident in England were also excluded from the analysis, as their follow-up may occur elsewhere. Elective readmission was excluded from the analysis. If, for any reason, a patient underwent multiple gastrectomies or esophagectomies only the first procedure was kept. Volume was defined as the average annual number of procedures per hospital and was calculated before exclusions were made. A modified version of the Charlson Comorbidity Index was used to measure comorbidity, excluding cancer and metastatic cancer.<sup>11</sup> The Indices of Multiple Deprivation were used to describe socio-economic deprivation, for admissions between 2008 and 2010 the 2007 version of Index of Multiple Deprivation was used, for admissions between 2011 and 2014 the 2010 version was used and for admissions after 2014, the 2015 version was used.

### *Operations*

Operative procedures were identified by the Office of Population Censuses and Surveys Classification of Surgical Operations and Procedures 4th revision codes. Esophagectomy codes included G01, G02, and G03. Gastrectomy codes included G27 and G28. Minimal access surgery was defined by codes Y74 and Y75.

### *Explanatory Variable*

The main exposure variable was readmission within 90 days. This was inclusive of unplanned admissions only. Index hospital was defined as the hospital in which the primary surgery was performed and nonindex hospital was defined as any other hospital. If a patient was initially readmitted to a nonindex trust but on the day of readmission or on the following day they were transferred to the index trust, this was recorded as readmission to the index trust.

## Statistical Analysis

Categorical variables are shown as counts and percentages, continuous as medians and inter-quartile ranges. Univariable analysis of categorical variables used chi-square tests and Kruskal–Wallis for continuous variables. Multivariable logistic regression was used to analyze readmissions and deaths within 90 days, the variables to be included were decided on a priori based on clinical knowledge. Overall patient survival was analyzed using Kaplan–Meier plots starting at 90 days postdischarge and excluding anyone who died in this period. Multivariable Cox analysis was performed with readmission being treated as a time-dependent variable. Proportional hazards were assessed via Schoenfeld residuals, as a result of this assessment, the Cox analysis was restricted to 5 years postdischarge. Analysis was performed on the overall cohort and also on the sub-cohorts of procedure type. Statistical analysis was performed in Stata Statistical Software: Release 15 SE (StataCorp LLC Texas). The approximate duration of car journeys from the center of the lower super output area that a patient lives into the site of their admission or readmission was calculated using the R package OSRM.<sup>12</sup> Readmission and survival plots were analyzed in R using package success (<https://CRAN.R-project.org/package=success>).<sup>13</sup>

## RESULTS

### *Clinicopathologic Characteristics*

From January 2008 to December 2019, 27,591 patients underwent elective esophagectomy or gastrectomy in England. This included 18,337 who underwent esophagectomy and 9254 who underwent either total or partial gastrectomy (total n = 4659, partial = 4595, Supplemental Tables 1 and 2, <http://links.lww.com/AOSO/A271>). Readmission after esophagectomy occurred in 27.6% of cases, of which 16.3% were readmitted to their index hospital (Table 1). Totally, 31.7% of esophagectomies were performed using minimally invasive techniques, and reoperation during index admission occurred in 4.4% of cases. Ninety-day mortality was 4.4%, and 5-year mortality was 51.6%. In total 13.0% of gastrectomies were performed using minimally invasive techniques, and reoperation during index admission occurred in 3.4% of cases. Ninety-day mortality was 4.1%, and 5-year mortality was 45.6%.

The primary cause of readmission to an index hospital was surgical in 45.2% of cases whereas the primary cause for readmission to a nonindex hospital was surgical in 23.7% of cases (Tables 2 and 3). The cause of readmission did not significantly impact overall survival for esophagectomy and gastrectomy (Supplemental Figure 1 and 20, <http://links.lww.com/AOSO/A272>).

Median duration of car journey to the index procedure hospital was 25.8 minutes (15.7–41.5). Time taken to attend hospital for readmission was significantly shorter when presenting to a nonindex hospital as compared to an index hospital ( $P < 0.001$ , nonindex site = 13 minutes [8.5–21.5], index site = 19 minutes [11.8–29.8]). Patients who were readmitted to a nonindex institution were significantly more likely to go to a nonteaching hospital ( $P < 0.001$ , nonindex site readmission, teaching hospital = 1,122 [41.5%] non-teaching = 1,579 [58.5%]).

## FACTORS ASSOCIATED WITH READMISSION

### *Overall Readmission and Adjusted Analysis Data*

Overall readmission rates have increased steadily across the study period from 21% in 2008 to 30% in 2019 (Fig. 1), with index readmission from 15% to 18% and nonindex readmission from 6% to 12% over the same time period. Overall, index and nonindex readmission rates increased in both esophagectomy and gastrectomy (Fig. 1).

**TABLE 1.**  
**Clinicopathologic Characteristics Associated With Readmissions in Patients Undergoing Esophagectomy**

<i>n</i>		No Readmission 13454 (73.4%)	Index Readmission 2994 (16.3%)	Nonindex Readmission 1889 (10.3%)	<i>P</i>
Patient age	Median age (IQR)	66 (59–72)	65 (58–72)	66 (59–72)	0.003*
	18–56	2317 (17.2%)	597 (19.9%)	337 (17.8%)	0.014
	57–64	3587 (26.7%)	811 (27.1%)	472 (25.0%)	
	65–69	2892 (21.5%)	600 (20.0%)	399 (21.1%)	
	70–75	3007 (22.4%)	636 (21.2%)	451 (23.9%)	
	76+	1651 (12.3%)	350 (11.7%)	230 (12.2%)	
Sex	Male	10649 (79.2%)	2284 (76.3%)	1455 (77.0%)	0.001*
	Female	2805 (20.9%)	710 (23.7%)	434 (23.0%)	
Ethnicity	White	12706 (94.4%)	2806 (93.7%)	1833 (97.0%)	<0.001*
	Asian	108 (0.8%)	50 (1.7%)	15 (0.8%)	
	Nonwhite Non-Asian	67 (0.5%)	19 (0.6%)	6 (0.3%)	
	Other	573 (4.3%)	119 (4.0%)	35 (1.9%)	
Deprivation quintiles	1	2056 (15.3%)	513 (17.1%)	315 (16.7%)	0.002*
	2	2523 (18.8%)	540 (18.0%)	383 (20.3%)	
	3	2923 (21.7%)	609 (20.3%)	426 (22.6%)	
	4	3051 (22.7%)	665 (22.2%)	426 (22.6%)	
	5	2901 (21.6%)	667 (22.3%)	339 (18.0%)	
Charlson score (without cancer)	0	8750 (65.0%)	1830 (61.1%)	1135 (60.1%)	<0.001*
	1–4	2706 (20.1%)	679 (22.7%)	442 (23.4%)	
	5+	1998 (14.9%)	485 (16.2%)	315 (16.5%)	
Volume grouping (use the average annual operation volume of hospital to split the cohorts equally)	<=42	1809 (13.5%)	404 (13.5%)	186 (9.9%)	<0.001*
	43–64	2781 (20.7%)	612 (20.4%)	452 (23.9%)	
	65–74	3065 (22.8%)	716 (23.9%)	351 (18.6%)	
	75–97	3034 (22.6%)	625 (20.9%)	500 (26.5%)	
	>97	2765 (20.6%)	637 (21.3%)	400 (21.2%)	
Reoperation (within the same admission)	Yes	670 (5.0%)	147 (4.9%)	72 (3.8%)	0.085
Minimal access surgery	Yes	4211 (31.3%)	1002 (33.5%)	593 (31.4%)	0.068
Length of stay	Median length of stay (IQR)	14 (11–21)	15 (11–21)	15 (11–22)	0.129
90-day mortality	Yes	619 (4.6%)	113 (3.8%)	81 (4.3%)	0.132
5-year mortality	Yes	6910 (51.4%)	1535 (51.3%)	1015 (53.7%)	0.144

\**P* values of ≤0.05.  
IQR indicates interquartile range.

**TABLE 2.**  
**Clinicopathologic Characteristics Associated with Readmissions in Patients Undergoing Gastrectomy**

<i>n</i>		No Readmission 7216 (78.0%)	Index Readmission 1227 (13.3%)	Non-index Readmission 812 (8.9%)	<i>P</i>
Patient age	Median age (IQR)	71 (62–77)	70 (60–76)	71 (62–77)	<0.001*
	18–56	1094 (15.2%)	245 (20.0%)	126 (15.5%)	0.001*
	57–64	1046 (14.5%)	185 (15.1%)	115 (14.2%)	
	65–69	1069 (14.8%)	181 (14.8%)	104 (12.8%)	
	70–75	1697 (23.5%)	275 (22.4%)	212 (26.1%)	
	76+	2310 (32.0%)	341 (27.8%)	255 (31.4%)	
Sex	Male	4813 (66.7%)	780 (63.6%)	539 (66.4%)	0.1
	Female	2403 (33.3%)	447 (36.4%)	273 (33.6%)	
Ethnicity	White	6326 (87.7%)	1064 (86.7%)	734 (90.4%)	0.006
	Asian	253 (3.5%)	64 (5.2%)	22 (2.7%)	
	Non-White non-Asian	292 (4.1%)	49 (4.0%)	33 (4.1%)	
	Other	345 (4.8%)	50 (4.1%)	23 (2.8%)	
Deprivation quintiles	1	1545 (21.4%)	265 (21.6%)	179 (22.0%)	0.571
	2	1425 (19.8%)	217 (17.7%)	165 (20.3%)	
	3	1483 (20.6%)	267 (21.8%)	170 (20.9%)	
	4	1430 (19.8%)	238 (19.4%)	166 (20.4%)	
	5	1333 (18.5%)	240 (19.6%)	132 (16.3%)	
Charlson score (without cancer)	0	4343 (60.2%)	700 (57.1%)	471 (58.0%)	0.193
	1–4	1449 (20.1%)	267 (21.8%)	181 (22.3%)	
	5+	1424 (19.7%)	260 (21.2%)	160 (19.7%)	
Volume grouping (use the average annual operation volume of hospital to split the cohorts equally)	<=42	1164 (16.1%)	221 (18.0%)	91 (11.2%)	<0.001*
	43–64	1563 (21.7%)	234 (19.1%)	228 (28.1%)	
	65–74	1444 (20.0%)	283 (23.1%)	137 (16.9%)	
	75–97	1480 (20.5%)	227 (18.5%)	192 (23.7%)	
	>97	1565 (21.7%)	262 (21.4%)	164 (20.2%)	
Reoperation (within the same admission)	Yes	257 (3.6%)	46 (3.8%)	12 (1.5%)	0.006
Minimal access surgery	Yes	948 (13.1%)	165 (13.5%)	89 (11.0%)	0.19
Length of stay	Median length of stay (IQR)	12 (9–16)	13 (10–18)	12 (10–17)	<0.001*
90-day mortality	Yes	286 (4.0%)	52 (4.2%)	41 (5.1%)	0.322
5-year mortality	Yes	3180 (44.1%)	628 (51.2%)	410 (50.5%)	<0.001*

\**P* values of ≤0.05.  
IQR indicates interquartile range.

Downloaded from http://journals.lww.com/laosopen by BHDIMfsePHkav1ZEoum1IQIN4a+kLLEZqpsIH04XM0hCwWCX 1AWNvYQp/IIQHID3D00ORy7T/SF14C3V/C1Y0abggQZXdwmfKZEBtwS= on 02/16/2024



**TABLE 3.**  
**Primary Cause of Readmission to Hospital**

Esophagectomy		Index Readmission		Nonindex Readmission			
		No of Patients	%	No of Patients	%		
Primary diagnosis	Surgical	Diagnosis 1	Malignant neoplasm: esophagus	171	Malignant neoplasm: esophagus	102	
		Diagnosis 2	Postprocedural disorders of digestive system*	138	Other	45	
		Diagnosis 3	Nausea and vomiting*	125	Nausea and vomiting*	39	
		Diagnosis 4	Other	124	Mechanical complication of gastrointestinal prosthetic devices, implants, and grafts	36	
		Diagnosis 5	Dysphagia	120	Abdominal pain/malignant neoplasm	30	
	Nonsurgical	Diagnosis 1	Other	347	LRTI	255	
		Diagnosis 2	LRTI	247	Other	240	
		Diagnosis 3	Nausea and vomiting*	102	Nausea and vomiting*	111	
		Diagnosis 4	Postprocedural disorders of digestive system*	97	Chest Pain	67	
		Diagnosis 5	Pleural effusion	83	Pleural effusion	66	
	Gastrectomy		Index Readmission		Nonindex Readmission		
			No of Patients	%	No of Patients	%	
	Primary diagnosis	Surgical	Diagnosis 1	Malignant neoplasm: stomach	88	Abdominal pain	35
			Diagnosis 2	Postprocedural disorders of GI system/infection following a procedure	73	Infection following a procedure	30
			Diagnosis 3	Other	63	Malignant neoplasm stomach	27
Diagnosis 4			Abdominal pain	57	Nausea and vomiting*	19	
Diagnosis 5			Nausea and vomiting*	49	Other	16	
Nonsurgical		Diagnosis 1	Other	155	Other	153	
		Diagnosis 2	GI Infection	35	LRTI	52	
		Diagnosis 3	Postprocedural disorders of GI system	34	Renal complications	35	
		Diagnosis 4	Renal complications	32	GI infection/infection/sepsis source not specified	32	
		Diagnosis 5	LRTI/malignant neoplasm: stomach	31	Nausea and vomiting*	25	

\*Nausea and vomiting admitted under surgery were identified as a "surgical readmission", whereas if it was admitted under internal medicine it was identified as "nonsurgical".  
GI indicates gastrointestinal; LRTI, lower respiratory tract infection.

**Esophagectomy Only**

Patients undergoing esophagectomy were more likely to be readmitted if they were female (odds ratio [OR], 1.17;  $P < 0.001$ ) or of Asian ethnicity (OR, 1.58;  $P = 0.005$ ) (Supplemental Table 1, <http://links.lww.com/AOSO/A271>). Patients with increasing comorbidity were at greater risk of readmission (Charlson 1–4: OR, 1.24;  $P < 0.001$  and Charlson 5+: OR, 1.30;  $P < 0.001$ ). Reoperation and use of minimally invasive techniques did not impact readmission rates (OR, 1.02;  $P = 0.780$  and OR, 1.07;  $P = 0.057$ ). Hospital volume has a mixed impact on readmission rates with centers performing 43–64 and >97 esophagectomies demonstrating higher readmission rates (43–64: OR, 1.17;  $P = 0.011$  and >97 OR, 1.15;  $P = 0.025$ , Supplemental Figure 3, <http://links.lww.com/AOSO/A274>). Readmission rate was unaffected for centers performing 65–74 and 75–96 esophagectomies.

**Gastrectomy Only**

Patient sex did not impact readmission rates for patients undergoing gastrectomy (OR, 1.09;  $P = 0.110$ ) (Supplemental Table 4, <http://links.lww.com/AOSO/A271>). Ethnicity and deprivation scores equally did not impact readmission rates. Patients with increased comorbidity were at greater risk of readmission

(Charlson 1–4: OR, 1.59;  $P = <0.021$  and Charlson 5+: OR, 1.23;  $P = <0.002$ ). Reoperation and use of minimally invasive techniques did not impact readmission rates (OR, 1.07;  $P = 0.644$  and OR, 0.93;  $P = 0.350$ ). Readmission rate was unaffected by hospital volume (Supplemental Figure 4, <http://links.lww.com/AOSO/A275>).

**OVERALL SURVIVAL**

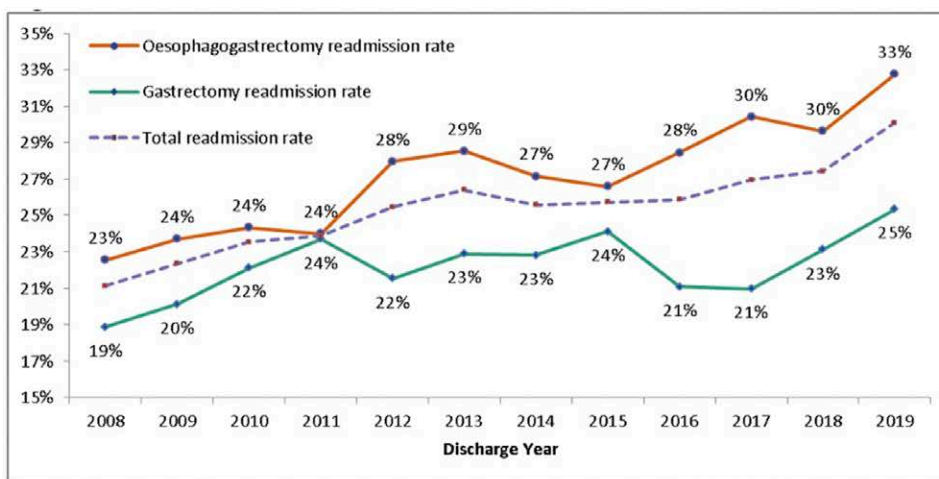
**Overall Survival and Adjusted Analysis Data**

Patients with no readmissions had significantly longer survival than those with readmissions (median [years]: 4.5 vs 3.8;  $P < 0.001$ ). Of patients who were readmitted, those readmitted to their index hospital had significantly improved survival (Fig. 2). In adjusted analyses, patients requiring index and nonindex readmission had significantly shorter survival than those without readmission (median (years): 3.3 vs 4.7;  $P < 0.001$ ).

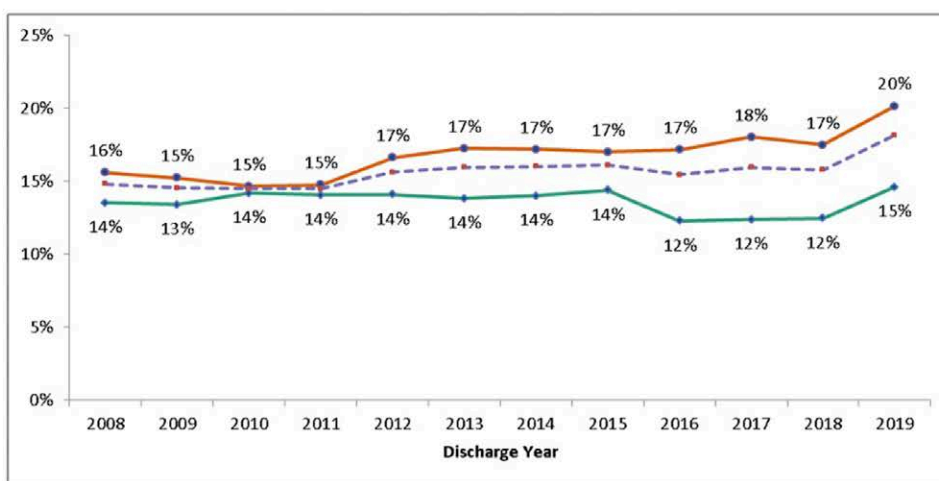
**Esophagectomy Only**

Overall survival after esophagectomy was improved in women (hazard ratio [HR], 0.73;  $P < 0.001$ ) (Table 4). Survival was

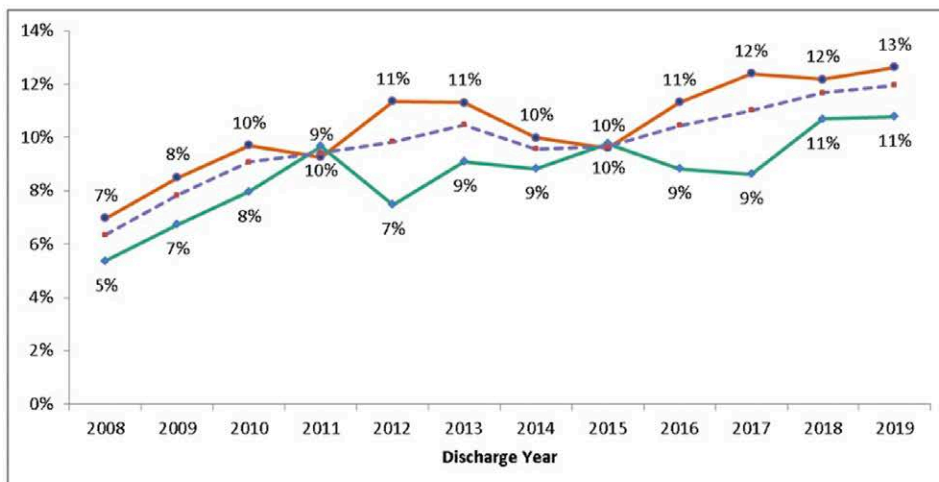
Downloaded from <http://journals.lww.com/laosopen> by BhdMf5ePpkav1ZEoum1tQIN4a+kLhEzqpsHh04XMh0hCwWCX  
1AWN7yQp/llQHID3dD00ORy7T/SF14C3V/C1y0abggQZxdtmKZBYtws= on 02/16/2024



Overall Readmission



Index Readmission

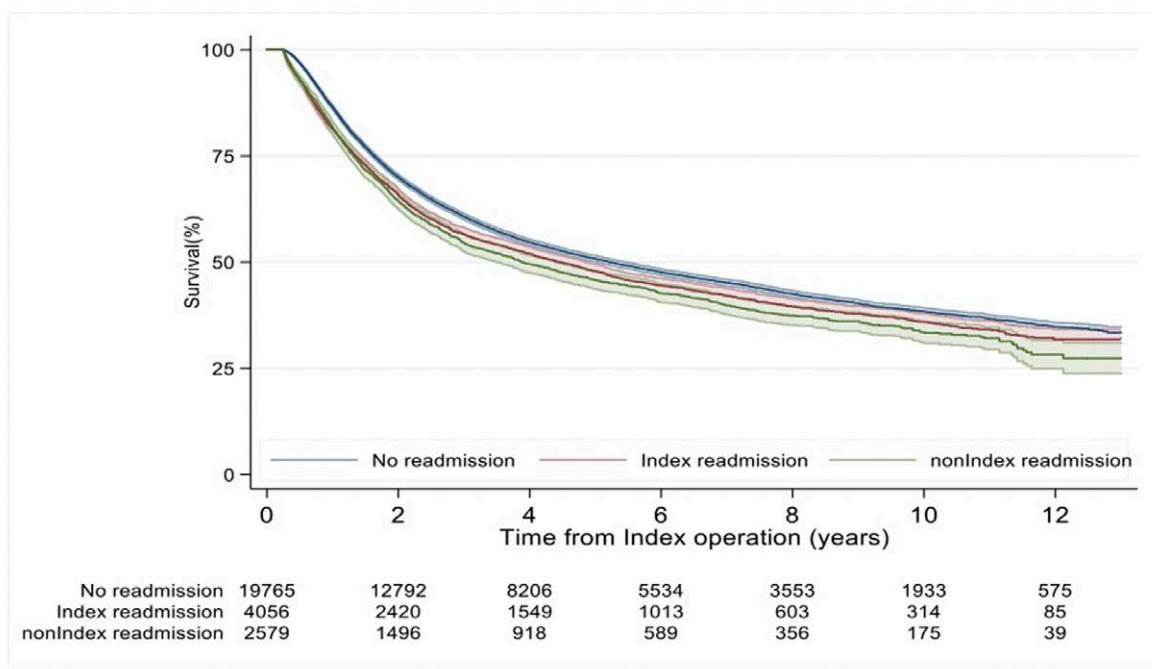


Non-Index Readmission

FIGURE 1. Readmission rates over time. Overall Readmission. Index Readmission. NonIndex Readmission

significantly reduced for those with increasing age. Patients in the upper quintile of age, 76+ years old demonstrated the worst 90-day mortality (HR, 1.451;  $P < 0.001$ ). Patients with increasing comorbidity were not at greater risk of reduced survival (Charlson 1–4; HR, 1.10;  $P = 0.174$  and Charlson 5+; HR, 1.10;  $P < 0.269$ ). Reoperation was not associated with significantly

reduced overall survival (HR, 1.12;  $P < 0.379$ ) whereas use of minimally invasive techniques was associated with improved survival (HR, 0.86;  $P < 0.021$ ). Long-term survival was affected by center volume (center vol. 75–97; HR, 0.91;  $P = 0.369$ ; center vol. >97; HR, 1.06;  $P = 0.597$ ; Supplemental Figure 5, <http://links.lww.com/AOSO/A276>). Patients readmitted with



**Log rank test, survival by readmission group is statistically significant  $p < 0.001$**

**FIGURE 2.** Overall survival for patients requiring readmission. Log-rank test, survival by readmission group is statistically significant  $P < 0.001$ .

recurrence were identified to have worse overall survival (readmission cause, malignant neoplasm of the esophagus HR, 1.29;  $P = 0.012$ ). Cause of readmission had little impact on overall survival (Supplemental Figure 1, <http://links.lww.com/AOSO/A272>).

### Gastrectomy Only

Overall survival after gastrectomy was affected by patient sex (female HR, 0.94;  $P < 0.558$ ) (Table 5). Survival was not impacted by patient’s age at the time of surgery. Deprivation did not impact survival in patients undergoing gastrectomy. Severe comorbidity identified as a Charlson  $>5$  did not correlate with worse overall survival, patients with a Charlson score (CS) of 1–4 were equally unaffected (CS 5+ HR, 1.06;  $P < 0.645$ ; CS 1–4; HR, 1.01;  $P = 0.909$ ). Reoperation did not affect overall survival (HR, 1.39;  $P < 0.184$ ) neither did the use of minimally invasive techniques (HR, 1.04;  $P < 0.794$ ). Center volume did significantly alter overall survival for patients undergoing gastrectomy (Supplemental Figure 6, <http://links.lww.com/AOSO/A277>). The cause of readmission had little impact on overall survival (Supplemental Figure 2, <http://links.lww.com/AOSO/A273>).

### 90-day Mortality

Ninety-day mortality was significantly greater in patients undergoing esophagectomy as compared to gastrectomy (OR, 0.74;  $P < 0.001$ ) (Table 6). Patient gender and ethnicity were not predictors of 90-day mortality. Absence of deprivation (indices of multiple deprivation score 5) was protective of mortality (OR, 0.82;  $P = 0.048$ ). Severe comorbidity identified as a Charlson  $>5$  increased the risk of 90-day mortality, patients with a CS of 1–4 were unaffected (OR, 2.46;  $P < 0.001$ ; OR, 1.04;  $P = 0.60$ ). Minimally invasive surgery reduced the risk of perioperative mortality whereas reoperation was identified predict the greatest risk of 90-day mortality (OR, 0.75;  $P < 0.001$ ; OR, 4.85;  $P < 0.001$ ). Increasing center volume

correlated with reduced risk of 90-day mortality with centers in the fifth quintile reporting the lowest risk of 90-day mortality (OR, 0.60;  $P < 0.001$ ).

### DISCUSSION

This national population-based cohort study, including  $>27,000$  patients, demonstrated that readmission after elective esophagectomy and gastrectomy for cancer has steadily increased over the past decade with rates now as high as 30%. Nearly one-third of patients readmitted return to nonindex institutions, and one-third of readmissions arise as a result of surgical-specific complications. Critically, readmission is associated with reduced overall survival, and particularly patients readmitted to a nonindex institution have the lowest overall survival. High-volume centers and centers performing minimally invasive surgery demonstrate improved long-term survival. This data can support health service delivery and infrastructure planning to ensure patients undergoing elective esophagectomy and gastrectomy receive treatment in high-volume centers with experience in minimally invasive techniques, and should patients require readmission maximal efforts should be undertaken to ensure this is to their index center.

Progressive increases in readmission rates have been identified within this study. Increasing expertise in medicine has led to an overall improved delivery of healthcare and consequently, there is an ever-increasing aging population with increased frailty and multimorbidity. Previously perceived barriers to complex surgery such as advanced age are in isolation no longer contraindications to surgery and perhaps increasing readmission rates are a modern reflection of the population as a whole. Reduced comorbidity and absence of deprivation were identified to be protective of readmission in this study. Current evidence highlights that salvage surgery and postoperative complications were also associated with readmission.<sup>14–16</sup> Reduced preoperative nutrition and evidence of sarcopenia have been shown to predict readmission in both esophagectomy and gastrectomy.<sup>17–19</sup> Increasingly prehabilitation programs have been introduced to negate the impact

Downloaded from <http://journals.lww.com/laosopen> by BihDMf5ePpkKav1ZEoum1tQIN4aHkLLEZqbsIH04XMf0hCwWCX  
1AWN7yQp/IIQHID3i3D00ORy7T/SF14C3V/C1y0abggQZXdMfKZEBYtws= on 02/16/2024

**TABLE 4.**  
**Multivariate Analysis of Factors Associated with Overall Survival Postesophagectomy**

	Hazard Ratio	P>z	(95% CI)	
Gender				
Male	1			
Female	0.73	<0.001*	0.64	0.84
Age groups (years)				
18–56	1			
57–64	1.11	0.229	0.94	1.31
65–69	1.16	0.117	0.96	1.39
70–75	1.18	0.073	0.98	1.42
76+	1.45	0.001*	1.17	1.79
Ethnicity				
White	1			
Asian	1.10	0.69	0.69	1.74
Non-White non-Asian	0.63	0.312	0.26	1.54
Other	0.98	0.889	0.70	1.35
Deprivation quintiles				
1	1			
2	0.81	0.022*	0.67	0.97
3	0.84	0.051*	0.70	1.00
4	0.87	0.121	0.73	1.04
5	0.79	0.013*	0.66	0.95
Charlson Comorbidity Index				
0	1			
1–4	1.10	0.174	0.96	1.26
5+	1.10	0.269	0.93	1.29
Reoperation–No	1			
Reoperation–Yes	1.12	0.379	0.87	1.45
Minimal access–No	1			
Minimal access–Yes	0.86	0.021*	0.76	0.98
Hospital volume groups				
<=42	1			
43–64	0.98	0.859	0.80	1.20
65–74	0.99	0.927	0.81	1.21
75–97	0.91	0.369	0.75	1.11
>97	1.06	0.597	0.86	1.29
Readmission organization				
Readmission to index center	1			
Readmission to nonindex center	1.08	0.19	0.96	1.22
Readmission reason				
LRTI	1			
Abdominal pain	1.12	0.365	0.88	1.43
Dysphagia	0.84	0.207	0.65	1.10
Infection following a procedure NEC	1.04	0.787	0.80	1.34
Malignant neoplasm of esophagus	1.29	0.012*	1.06	1.57
Mechanical complication of GI prosthetic devices	1.02	0.862	0.79	1.33
Nausea and vomiting	0.91	0.325	0.74	1.10
Other complications postmedical intervention	0.91	0.493	0.69	1.20
Pleural effusion, NEC	1.08	0.532	0.86	1.35
Postprocedural disorders of digestive system	1.04	0.685	0.85	1.28

\*P values of ≤0.05.  
 GI indicates gastrointestinal; LRTI, lower respiratory tract infection; NEC, not elsewhere classifiable.

of preoperative nutritional deficits and challenging neoadjuvant treatments. Despite this, current prehabilitation programs have not been able to reduce complication and readmission rates.<sup>20</sup> Determining suitability for discharge and, in turn, preventing readmission can be clinically challenging. Increasingly machine learning techniques have been used to improve readmission risk prediction with a moderate degree of success.<sup>21</sup> It is unknown, however, whether such models will have sufficient accuracy and relevance to be adopted into clinical practice.

**TABLE 5.**  
**Multivariate Analysis of Factors Associated with Overall Survival Post Gastrectomy**

	Hazard Ratio	P>z	(95% CI)	
Gender				
Male	1			
Female	0.94	0.558	0.78	1.15
Age groups (years)				
18–56	1			
57–64	1.05	0.783	0.76	1.44
65–69	1.25	0.167	0.91	1.70
70–75	1.13	0.419	0.85	1.50
76+	1.28	0.081	0.97	1.70
Ethnicity				
White	1			
Asian	0.47	0.009*	0.27	0.83
Non-White non-Asian	0.57	0.046*	0.33	0.99
Other	0.55	0.043*	0.30	0.98
Deprivation quintiles				
1	1			
2	0.90	0.475	0.67	1.20
3	1.11	0.44	0.85	1.46
4	0.95	0.694	0.72	1.25
5	1.20	0.206	0.90	1.61
Charlson Comorbidity Index				
0	1			
1–4	1.01	0.909	0.81	1.27
5+	1.06	0.645	0.83	1.34
Reoperation–No	1			
Reoperation–Yes	1.39	0.184	0.85	2.27
Minimal access–No	1			
Minimal access–Yes	1.04	0.794	0.79	1.37
Hospital volume groups				
<=42	1			
43–64	0.93	0.658	0.69	1.26
65–74	0.91	0.51	0.67	1.22
75–97	1.00	0.986	0.75	1.35
>97	0.91	0.528	0.67	1.22
Readmission organization				
Readmission to Index center	1			
Readmission to nonindex center	0.94	0.503	0.77	1.14
Readmission reason				
Malignant neoplasm of stomach	1			
Abdominal pain	0.79	0.141	0.57	1.08
GI infection	0.67	0.058	0.44	1.01
Infection following a procedure (NEC)	0.62	0.005*	0.45	0.87
LRTI	0.95	0.765	0.66	1.36
Nausea and vomiting	0.82	0.25	0.59	1.15
Other complications following	0.76	0.171	0.51	1.13
Postprocedural disorders	0.67	0.018*	0.49	0.93
Renal complications	0.68	0.073	0.45	1.04

\*P values of ≤0.05.  
 GI indicates gastrointestinal; LRTI, lower respiratory tract infection; NEC, not elsewhere classifiable.

Patients requiring readmission who are admitted to a nonindex institution have a significantly reduced overall survival.<sup>22</sup> Fragmentation of care and readmission to a nonindex institution is common accounting for 20% to 33% of readmissions.<sup>9,22,23</sup> These findings are supported by population-based analyses of 9,440,503 Medicare beneficiaries undergoing major surgery which examined the impact of readmission on 90-day mortality. Patients undergoing gastrectomy were not included in this study, yet 16,702 undergoing esophagectomy were included. The readmission rate for esophagectomy was 21.9%, of which 66.8% were readmitted to their index institution. Overall and for oesophagectomy patients specifically, mortality was reduced for patients admitted to their index institution. Analysis of patients readmitted after gastrectomy shows that patients readmitted with a surgical complication have an increased mortality rate when readmitted to a nonindex institution.<sup>24</sup> Improvements in short-term outcomes may be attributable to greater clinician

Downloaded from http://journals.lww.com/laosopen by BhdMf5ePpkav1ZEoum1IQIN4a+kLlNEZqbsIH04XM0hCwWCX 1AWN7yQp/IIQHID3D000QRy7T/SF14C3V/C1y0abggQZXdMwKZEB7ws= on 02/16/2024



**TABLE 6.**  
**Multivariate Analysis of Factors Associated With 90-day Mortality**

90-d Mortality	Odds Ratio	P>z	(95% CI)	
Index op				
Esophageal surgery	1			
Gastric surgery	0.74	<0.001*	0.65	0.85
Gender				
Male	1			
Female	0.88	0.081	0.76	1.02
Age groups (years)				
18–56	1			
57–64	1.38	0.007	1.09	1.7
65–69	1.43	0.003	1.27	1.82
70–75	2.06	<0.001*	1.64	2.57
76+	2.65	<0.001*	2.11	3.33
Ethnicity				
White	1			
Asian	1.07	0.774	0.67	1.72
Non-White non-Asian	0.66	0.172	0.37	1.20
Other	1.17	0.299	0.87	1.57
Deprivation quintiles				
1	1			
2	0.93	0.440	0.76	1.12
3	0.97	0.715	0.80	1.16
4	0.91	0.329	0.75	1.10
5	0.82	0.048	0.67	1.00
Charlson Comorbidity Index				
0	1			
1–4	1.04	0.600	0.89	1.23
5+	2.46	<0.001*	2.14	2.81
Reoperation–No	1			
Reoperation–Yes	4.85	<0.001*	4.09	5.74
Minimal access–No	1			
Minimal access–Yes	0.75	<0.001*	0.65	0.87
Hospital volume groups				
<=42	1			
43–64	0.67	<0.001*	0.55	0.80
65–74	0.73	<0.001*	0.60	0.88
75–97	0.62	<0.001*	0.51	0.75
>97	0.60	<0.001*	0.49	0.73

\*P values of ≤0.05.

experience enabling earlier recognition of complications requiring intervention. Institutional variances may also exist in the aggressiveness of care and end-of-life decisions.<sup>23</sup> Centralization has enabled improved 24-hour access to interventional radiology, theaters, and dedicated oesophago-gastric surgeons on-call rotas. Variation in long-term survival as a result of fragmentation in care may again be attributable to access to clinicians with a greater experience in diagnostics of post-op complications. More minor complications, such as recurrent chest infections or nutritional complications that are not managed adequately may have long-term consequences.<sup>23</sup> Failure of active nutritional assessment and intervention has been shown to reduce survival in patients with pancreatic adenocarcinoma.<sup>25</sup> Index hospitals were shown to provide improved nutritional assessment and pancreatic enzyme replacement which was associated with improved long-term survival.<sup>26</sup>

Textbook outcome after both esophagectomy and gastrectomy has been shown to be associated with improved long-term survival.<sup>27</sup> Centralization has improved patient outcomes in esophagectomy and gastrectomy, however, despite this, there has been a progressive increase in readmission rates during the study period. Results from the Dutch Upper-Gastrointestinal Cancer Audit have shown progressive improvement over time in surgical standards with increasing lymph node yields, increased rates of minimally invasive surgery, and reduced mortality rates.<sup>28</sup> Complication rates over the same duration have,

however, increased, emphasizing the importance of improved expertise in complication management that likely benefits from centralized expertise in esophago-gastric surgery. In addition to complex surgery within the UK, there has also been a drive in the UK to centralize the care of complex medical problems including stroke and myocardial infarction. Hospital capacity has not increased at a rate to meet demand. This has been further complicated by COVID which has brought further pressure on elective capacity and staffing.<sup>29</sup> Increasing readmission may be reflective of increased pressure for bed capacity. In addition, further funding and analysis are required to better determine how to deliver optimum care in a well-resourced centralized service particularly as it is evident that outcomes are worse for patients with surgical and nonsurgical complications readmitted to a nonindex institution.<sup>30</sup> Patients requiring advice or clinical review after discharge often lack coordinated access to early assessment due to limited hospital resources and patient location. To ensure high-quality outcomes and prevent readmission improved protocols may be required which are inclusive remote monitoring.<sup>31,32</sup> Wearable monitoring devices which are inclusive of heart rate, temperature, and respiratory rate are coming to the market and may provide a mechanism to create an early warning system for patients postdischarge at risk of unplanned readmission.<sup>33</sup> Clinician or nurse-led remote monitoring of post-surgery patients on virtual wards may provide a mechanism for early recognition of complications. The COVID pandemic has led to improved access and willingness to use video conferencing. Studies have shown that even within the context of cancer surgery, video conferring is an acceptable method of follow-up for patients which in turn may enable improved options for centralized services to access remote patients.<sup>34</sup> Combined remote monitoring and easy access to telephone and video consultation may enable early recognition of complications and repatriation to the patient's index institution which has been identified in the study to provide improved short- and long-term outcomes for patients.

Our study has some strengths, including the large number of esophagectomy and gastrectomy patients analyzed using a population-based database. As a multi-institutional population-based study capturing patients from over 10 years, it provides a comprehensive assessment of both risk factors and implications of readmission after major surgery. The study is limited as it is retrospective and lacks some granularity that is not possible due to the nature of the data captured by HES. This is particularly important within the context of neoadjuvant and adjuvant treatment which is not available within HES. Only a very small number of patients operated in the private sector would not be included in this study. The readmission destination may also be a source of selection bias as the severity of the illness is unknown.

**CONCLUSION**

Readmission rates for elective esophagectomy and gastrectomy for cancer have increased significantly over the past decade. Patients requiring readmission to the hospital after surgery have an increased risk of mortality which is further exacerbated by admission to a nonindex institution. Patients requiring readmission to the hospital should be assessed and admitted if required to their index institution.

**REFERENCES**

1. Evans RPT, Kamarajah SK, Bundred JR, et al. Rates of anastomotic complications and their management following esophagectomy: results of the oesophago-gastric anastomosis audit (OGAA). *Ann Surg.* 2021;275:e382–e391.
2. Knight SR, Shaw CA, Pius R, et al. Global variation in postoperative mortality and complications after cancer surgery: a multicentre, prospective cohort study in 82 countries. *Lancet.* 2021;397:387–397.

Downloaded from http://journals.lww.com/annalsopen by BMDi5ePpHkav1ZEoum11QIN4a+kLNEZgbsIH04XM0hCwWCX 1AWN7yQp/IIQHID3D00ORy7T/SF14C3V/C1y0abggQZXdwmKZEB7ws= on 02/16/2024

3. Birkmeyer JD, Siewers AE, Finlayson EVA. Hospital volume and surgical mortality in the United States. *N Engl J Med.* 2002;11:88–89.
4. Birkmeyer JD, Stukel TA, Siewers AE, et al. Surgeon volume and operative mortality in the United States. *N Engl J Med.* 2003;349:2117–2127.
5. Munasinghe A, Markar SR, Mamidanna R, et al. Is it time to centralize high-risk cancer care in the United States? comparison of outcomes of esophagectomy between England and the United States. *Ann Surg.* 2015;262:79–85.
6. Evans RPT, Kamarajah SK, Nepogodiev D, et al. Comparison of short-term outcomes from the international oesophago-gastric anastomosis audit (OGAA), the esophagectomy complications consensus group (ECCG), and the Dutch upper gastrointestinal cancer audit (DUCA). *BJS Open.* 2021;5:zrab010.
7. Baiocchi GL, Giacomuzzi S, Reim D, et al. Incidence and grading of complications after gastrectomy for cancer using the GASTRODATA registry a European retrospective observational study. *Ann Surg.* 2020;272:807–813.
8. Wu WW, Zhang W-H, Zhang W-Y, et al. Risk factors of the postoperative 30-day readmission of gastric cancer surgery after discharge: a PRISMA-compliant systematic review and meta-analysis. *Medicine (United States).* 2019;98:e14639.
9. Zheng C, Habermann EB, Shara NM, et al. Fragmentation of care after surgical discharge: non-index readmission after major cancer surgery. *J Am Coll Surg.* 2016;222:780–789e2.
10. Nimptsch U, Haist T, Gockel I, et al. Complex gastric surgery in Germany—is centralization beneficial? Observational study using national hospital discharge data. *Langenbeck's Arch Surg.* 2019;404:93–101.
11. Charlson ME, Pompei P, Ales KL, et al. A new method of classifying prognostic comorbidity in longitudinal studies: development and validation. *J Chronic Dis.* 1987;40:373–383.
12. <https://cran.r-project.org/web/packages/osrm/osrm.pdf>.
13. Putter H, Eikema D-J, de Wreede LC, et al. Benchmarking survival outcomes: a funnel plot for survival data. *Stat Methods Med Res.* 2022;31:1171–1183.
14. Chen YT, Wang CT, Chiu CH, et al. Salvage surgery, chylothorax and pneumonia are the main drivers of unplanned readmissions after oesophagectomy for cancer. *Eur J Cardiothorac Surg.* 2021;59:1021–1029.
15. Bhagat R, Bronsert MR, Juarez-Colunga E, et al. Postoperative complications drive unplanned readmissions after esophagectomy for cancer. *Ann Thorac Surg.* 2018;105:1476–1482.
16. Sundaram A, Srinivasan A, Baker S, et al. Readmission and risk factors for readmission following esophagectomy for esophageal cancer. *J Gastrointest Surg.* 2015;19:581–586.
17. Dan Z, YiNan D, ZengXi Y, et al. Thirty-day readmission after radical gastrectomy for gastric cancer: a meta-analysis. *J Surg Res.* 2019;243:180–188.
18. Makiura D, Ono R, Inoue J, et al. Impact of sarcopenia on unplanned readmission and survival after esophagectomy in patients with esophageal cancer. *Ann Surg Oncol.* 2018;25:456–464.
19. Lou N, Chi C-H, Chen X-D, et al. Sarcopenia in overweight and obese patients is a predictive factor for postoperative complication in gastric cancer: a prospective study. *Eur J Surg Oncol.* 2017;43:188–195.
20. Janssen THJB, Fransen LF, Heesakkers FF, et al. Effect of a multimodal prehabilitation program on postoperative recovery and morbidity in patients undergoing a totally minimally invasive esophagectomy. *Dis Esophagus.* 2021;35:doab082.
21. Bolourani S, Tayebi MA, Diao Li, et al. Using machine learning to predict early readmission following esophagectomy. *J Thorac Cardiovasc Surg.* 2021;161:1926–1939.e8.
22. Zafar SN, Shah AA, Channa H, et al. Comparison of rates and outcomes of readmission to index vs nonindex hospitals after major cancer surgery. *JAMA Surg.* 2018;153:719.
23. Stitzenberg KB, Chang YK, Smith AB, et al. Impact of location of readmission on outcomes after major cancer surgery. *Ann Surg Oncol.* 2017;24:319–329.
24. Brauer DG, Wu N, Keller MR, et al. Care fragmentation and mortality in readmission after surgery for hepatopancreatobiliary and gastric cancer: a patient-level and hospital-level analysis of the healthcare cost and utilization project administrative database. *J Am Coll Surg.* 2021;232:921–932.e12.
25. Roberts KJ, Bannister CA, Schrem H. Enzyme replacement improves survival among patients with pancreatic cancer: results of a population based study. *Pancreatology.* 2019;19:114–121.
26. Harvey PR, McKay SC, Wilkin RJ, et al. Pancreatic enzyme replacement therapy in patients with pancreatic cancer: a national prospective study. *Pancreatology.* 2021;21:1127–1134.
27. van der Werf LR, Busweiler LAD, van Sandick JW, et al; Dutch Upper GI Cancer Audit (DUCA) group. Reporting national outcomes after esophagectomy and gastrectomy according to the esophageal complications consensus group (ECCG). *Ann Surg.* 2020;271:1095–1101.
28. Voeten DM, Gisbertz SS, Ruurda JP, et al; Dutch Upper Gastrointestinal Cancer Audit (DUCA) Group. Outcomes of esophagogastric cancer surgery during eight years of surgical auditing by the Dutch Upper Gastrointestinal Cancer Audit (DUCA). *Ann Surg.* 2021;274:449–458.
29. Nepogodiev D, Abbott TEF, Ademuyiwa AO, et al. Projecting COVID-19 disruption to elective surgery. *Lancet.* 2022;399:233–234.
30. Wong DJN1,2, Harris SK3, Moonesinghe SR1,2; SNAP-2: EPICCS collaborators. Cancelled operations: a 7-day cohort study of planned adult inpatient surgery in 245 UK National Health Service hospitals. *Br J Anaesth.* 2018;121:730–738.
31. Breteler MJM, Numan L, Ruurda JP, et al. Wireless remote home monitoring of vital signs in patients discharged early after esophagectomy: observational feasibility study. *JMIR Perioper Med.* 2020;3:e21705.
32. Breteler MJ, KleinJan E, Numan L, et al. Are current wireless monitoring systems capable of detecting adverse events in high-risk surgical patients? A descriptive study. *Injury.* 2020;51:S97–105.
33. Breteler MJM, Huizinga E, van Loon K, et al. Reliability of wireless monitoring using a wearable patch sensor in high-risk surgical patients at a step-down unit in the Netherlands: a clinical validation study. *BMJ Open.* 2018;8:e020162.
34. Barsom EZ, Jansen M, Tanis PJ, et al. Video consultation during follow up care: effect on quality of care and patient- and provider attitude in patients with colorectal cancer. *Surg Endosc.* 2021;35:1278–1287.