

COLLEGE IS FOR YOU!



Think Higher.
Think College.



Join clubs and organizations and go to events on campus with friends



Get a job

Are you a student with an intellectual disability? Have you ever thought about going to college? In college you can...

Live on campus in a dorm or apartment



Take Classes

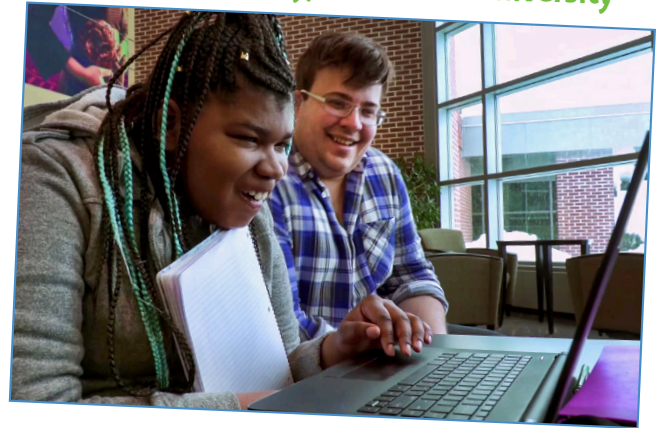




“The best thing about being in college is the food. (laughs) ... Beginning to meet new people... just having a support system is just awesome.”
 –Lauryn, University of North Texas

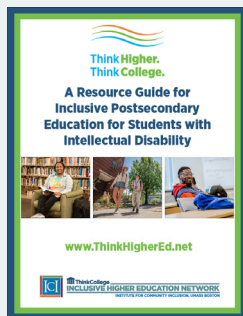
“I chose to go to college so I can learn and get homework and have fun. And so I can have friends.”

–Missy, Millersville University



So, what do you think? Want to learn more? **TAKE THE NEXT STEP!**

- Talk to your family.
- Tell your teachers and principal you want to go to college.
- Set a goal in your Individualized Education Plan (IEP).
- Talk to your siblings or friends to learn more about college.



A Resource Guide for Inclusive Postsecondary Education (IPSE) for Students with Intellectual Disability

This simple and easy-to-use guide offers an overview of IPSE programs and resources, links, tips, and tools for college planning.




Think Higher. Think College.
thinkhighered.net



Visit: www.thinkcollege.net

Follow: [@thinkcollegeCI](https://twitter.com/thinkcollegeCI)

Contact: thinkcollegeIHEN@umb.edu

Subscribe: thinkcollege.net/subscribe

This resource is a product of the Think College Inclusive Higher Education Network at the Institute for Community Inclusion, University of Massachusetts Boston, and funded by a grant from the Office of Postsecondary Education (Grant No. P407C210001). It was developed as a part of the “Think College. Think Higher.” public awareness campaign. The opinions contained in this document are those of the authors and do not necessarily reflect those of the funder.

RECOMMENDED CITATION: Pound, S., Grigal, M., Weir, C., & Roberts-Dahm, L.D. (2023). College is For You! Think College Resource. Boston, MA: University of Massachusetts Boston, Institute for Community Inclusion.

