

Development of coronary dysfunction in adult progeny after maternal engineered nanomaterial inhalation during gestation

Original

Development of coronary dysfunction in adult progeny after maternal engineered nanomaterial inhalation during gestation / Fournier, Sara B.; Lam, Vincent; Goedken, Michael J.; Fabris, Laura; Stapleton, Phoebe A.. - In: SCIENTIFIC REPORTS. - ISSN 2045-2322. - 11:(2021). [10.1038/s41598-021-98818-8]

Availability:

This version is available at: 11583/2985387 since: 2024-01-25T14:37:57Z

Publisher:

NATURE PORTFOLIO

Published

DOI:10.1038/s41598-021-98818-8

Terms of use:

This article is made available under terms and conditions as specified in the corresponding bibliographic description in the repository

Publisher copyright

(Article begins on next page)



OPEN

Development of coronary dysfunction in adult progeny after maternal engineered nanomaterial inhalation during gestation

Sara B. Fournier¹, Vincent Lam², Michael J. Goedken³, Laura Fabris⁴ & Phoebe A. Stapleton^{1,2}✉

Maternal exposure to environmental contaminants during pregnancy can profoundly influence the risk of developing cardiovascular disease in adult offspring. Our previous studies have demonstrated impaired cardiovascular health, microvascular reactivity, and cardiac function in fetal and young adult progeny after maternal inhalation of nano-sized titanium dioxide (nano-TiO₂) aerosols during gestation. The present study was designed to evaluate the development of cardiovascular and metabolic diseases later in adulthood. Pregnant Sprague–Dawley rats were exposed to nano-TiO₂ aerosols (~ 10 mg/m³, 134 nm median diameter) for 4 h per day, 5 days per week, beginning on gestational day (GD) 4 and ending on GD 19. Progeny were delivered in-house. Body weight was recorded weekly after birth. After 47 weeks, the body weight of exposed progeny was 9.4% greater compared with controls. Heart weight, mean arterial pressure, and plasma biomarkers of inflammation, dyslipidemia, and glycemic control were recorded at 3, 9 and 12 months of age, with no significant adaptations. While no clinical risk factors (i.e., hypertension, dyslipidemia, or systemic inflammation) emerged pertaining to the development of cardiovascular disease, we identified impaired endothelium-dependent and -independent arteriolar dysfunction and cardiac morphological alterations consistent with myocardial inflammation, degeneration, and necrosis in exposed progeny at 12 months. In conclusion, maternal inhalation of nano-TiO₂ aerosols during gestation may promote the development of coronary disease in adult offspring.

Early life exposures profoundly influence the risk of developing disease later in life. This concept, identified as the Developmental Origins of Health and Disease (DOHaD) paradigm, hypothesizes that environmental exposures during critical periods of growth and development in early life (i.e. gestation) may predispose an individual to chronic disease in adulthood. The most notable examples describe the development of cardiovascular and metabolic diseases in offspring, by Barker¹. In these seminal studies, Barker and colleagues present the intrauterine origins of cardiovascular and metabolic disease and identify strong correlations between intrauterine or fetal growth restriction and the development of cardiovascular and metabolic diseases later in life^{2–4}.

More recent studies demonstrate maternal exposure to environmental contaminants results in increased risk of adult disease in offspring⁵. Unfortunately, of the 425 publications identified between 1988 and 2014, only 15% focused on cardiovascular or metabolic outcomes; furthermore, only 28 publications focused on in utero exposures only and none evaluated air pollution or particulate matter (PM) exposure as an initiating source⁵. Epidemiological evidence demonstrates that exposure to ambient particulate matter, at any point between pre-conception and birth, results in reduced fetal growth⁶. Additionally, data derived from the Boston

¹Environmental and Occupational Health Sciences Institute, Rutgers University, 170 Frelinghuysen Road, Piscataway, NJ 08854, USA. ²Department of Pharmacology and Toxicology, Ernest Mario School of Pharmacy, Rutgers University, 160 Frelinghuysen Rd., Piscataway, NJ 08854, USA. ³Research Pathology Services, Rutgers University, 41 Gordon Road, Piscataway, NJ 08854, USA. ⁴Department of Material Science and Engineering, School of Engineering, Rutgers University, 607 Taylor Rd., Piscataway, NJ 08854, USA. ✉email: stapleton@ehsi.rutgers.edu

Group	Number of litters (n)	Gestation length (days)	Average pups per litter	Male/female (%)	Mortality	Health concerns
AIR	4	22.25 ± 0.25	11.00 ± 0.41 (n = 11)	50.00 50.00	3	Tumor (1)
ENM	4	22.50 ± 0.50	12.75 ± 0.48 (n = 12–14)	56.00 44.00	2	Seizure (1)

Table 1. Litter characteristics. Values are shown as mean ± SEM. Statistics were analyzed with a students T-test ($p < 0.05$).

Birth Cohort suggests that maternal exposure to fine ambient PM (PM_{2.5}) during the third trimester is associated with increased blood pressure in children⁷. Ultimately, exposure to air pollution early in life has been linked to the development of cardiovascular disease⁸ and impaired cardiac function^{9,10}. The progression of cardiovascular disease has been attributed to increased risk factors, including obesity, hypertension and metabolic disease⁸. In laboratory mouse models, in utero exposure to diesel exhaust PM results in increased weight gain, reduced blood pressure, and cardiac hypertrophy attributed to pressure overload culminating in an increased susceptibility to heart failure in male offspring at 3 months of age^{11,12}. Interestingly, male mice directly exposed to diesel exhaust PM did not exhibit symptoms of heart failure for up to 6 months post-exposure¹³, suggesting that these outcomes are directly associated with gestational exposure.

Engineered nanomaterials (ENM) have been previously utilized as a surrogate to represent ultrafine PM (PM_{0.1})¹⁴. Presently, titanium dioxide nanomaterials (nano-TiO₂) are one of the most prolific nanoparticles applied to domestic and industrial products. The production of nano-TiO₂ has increased substantially over the last decade, with an estimated 2.5 million tons to be produced in 2025¹⁵. Studies focused on occupational exposure, regulation and risk management of nano-TiO₂ have identified associations between occupational exposure to nano-TiO₂ and pulmonary inflammation, oxidative stress, cytotoxicity, and fibrosis^{16,17}. Based on experimental evidence from inhalation studies, TiO₂ has been classified by the International Agency for Research on Cancer (IARC) as possibly carcinogenic to humans¹⁸.

Studies of maternal exposure to nano-TiO₂ during gestation has been shown to impair maternal and offspring health^{19–24}. Unfortunately, data focused on the development of cardiovascular and metabolic disease after in utero exposure to nano-TiO₂ is limited^{19,25}. Previous studies have identified plausible mechanisms of progeny impairment following maternal exposure to TiO₂ during pregnancy including fetal growth restriction, particle translocation, systemic inflammation, oxidative stress, and epigenetic modifications^{19,25–27}. These conditions may promote the development of traditional cardiovascular risk factors including hypertension, obesity, dyslipidemia, and diabetes. We identified a 32% reduction in fetal growth in litters from dams exposed to nano-TiO₂ aerosols via whole-body inhalation for more than 10 days of pregnancy²⁴. Evaluations of female progeny have identified impaired endothelium-dependent dilation of the coronary microvasculature at 3 months; additionally, there have been significant reductions in mitochondrial respiration in the left ventricle providing evidence of an association between cardiovascular and metabolic impairments and gestational exposure to nano-TiO₂²⁸. Further, a study by Hathaway et al. reported functional impairments to cardiomyocyte function and bioenergetics in young adult rats after maternal exposure to nano-TiO₂ aerosols throughout gestation²².

While these initial studies have demonstrated impairments in cardiovascular health, microvascular reactivity and cardiac function in young adult progeny after maternal exposure to nano-TiO₂ aerosols during gestation, the timeline of disease development and progression remains unclear. Furthermore, traditional clinical markers of cardiovascular and metabolic disease have not yet been evaluated. Therefore, the purpose of this study was to track traditional markers of cardiovascular and metabolic disease in progeny from birth to 1 year of age after maternal inhalation of nano-TiO₂ particles during gestation. Our results provide evidence that gestational exposure to nano-TiO₂ significantly impairs progeny coronary health; however, this outcome is not associated with the presentation of traditional cardiovascular risk factors including obesity, dyslipidemia, systemic inflammation, or impaired glycemic control.

Results

Litter characteristics. Average length of gestation, average number of pups per litter, and sex ratio (expressed as percent male) are reported in Table 1. No differences in litter characteristics were observed between sham-control and exposure groups.

Progeny growth. Average interval body weights of offspring until 1 year of age are presented in Fig. 1. The average body weight of nano-TiO₂ exposed offspring are similar compared with average body weight of offspring exposed to filtered air in the first 3 months (rapid growth phase). The average body weight of nano-TiO₂ exposed offspring was significantly higher compared with the average body weights of sham-control offspring in the 15-week moving average reported at week 47 (Fig. 1) ($p < 0.01$, two-way ANOVA followed by LSD post hoc multiple comparison). Average body weights of ENM-exposed offspring tended to be greater compared with average body weights of sham-controls during the maintenance phase of growth, however these differences were not significant. At week 47, average body weight from offspring exposed to nano-TiO₂ was approximately 9.4% greater compared with average body weight of offspring exposed to filtered air.

Progeny blood pressure and heart weight. There were no significant differences in MAP (Fig. 2) or heart weight (Fig. 3) in exposed offspring compared with control offspring at 3, 9 or 12 months. This suggests

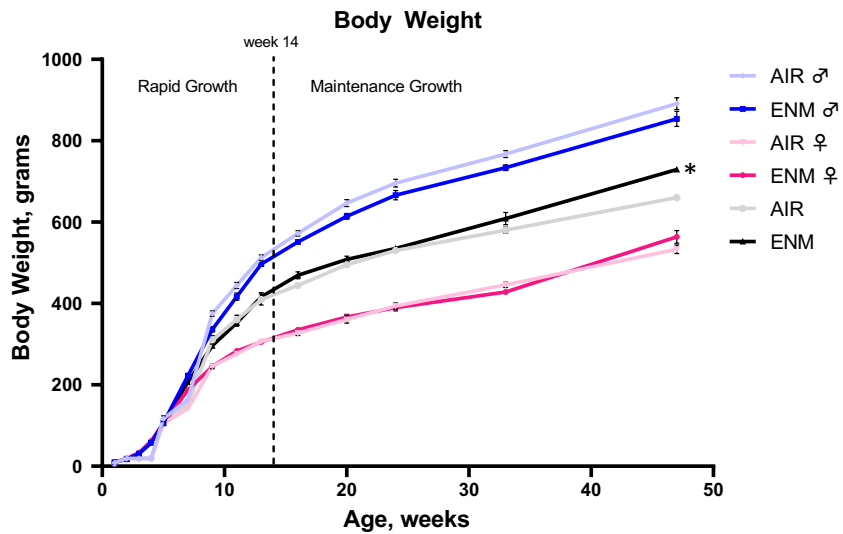


Figure 1. Body weight. Interval body weight (mean ± SEM) versus Age (weeks) of offspring from Sham-Control and ENM groups. *Indicates $p < 0.05$ versus Sham-Control (AIR) group.

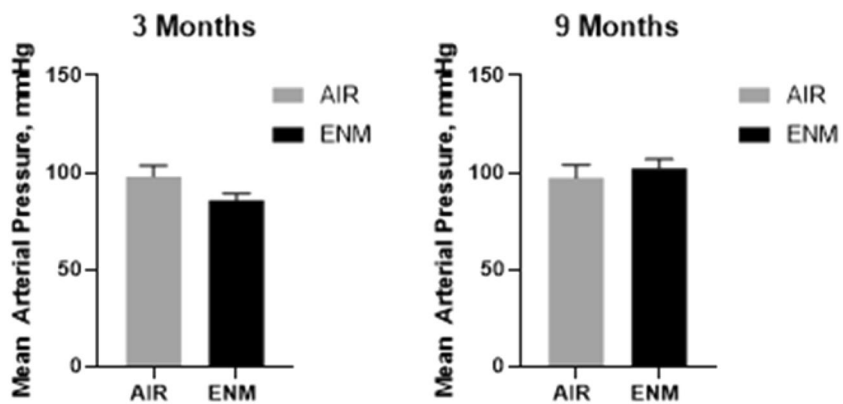


Figure 2. Mean Arterial Pressure. Mean arterial pressure (MAP) for Sham-Control (gray bars) and ENM (black bars) offspring at 3 and 9 months of age. Values are shown as mean ± SEM.

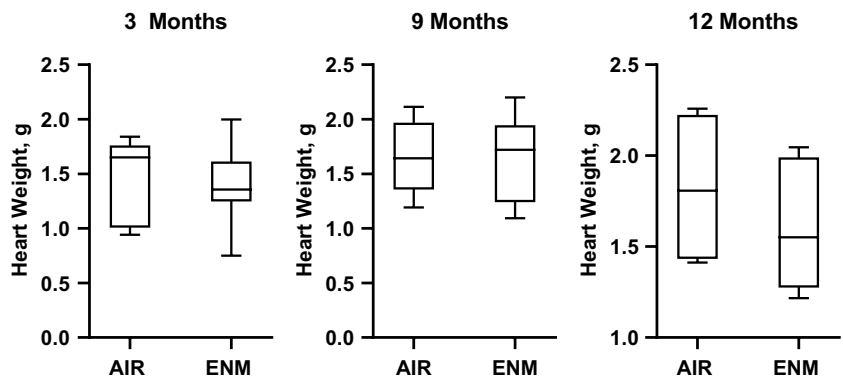


Figure 3. Heart Weight. Heart weight of offspring in Sham-Control (gray bars) and ENM (black bars) offspring at 3, 9, and 12 months of age. Values are shown as mean ± SEM. Statistics were analyzed with a Students T-test ($p < 0.05$).

Group	n	Inner diameter (μm)	Wall thickness (μm)	Tone (%)	Passive outer diameter (μm)	Passive wall thickness (μm)
AIR	4	67.50 \pm 16.48	25.13 \pm 1.59	48.40 \pm 12.36	183.50 \pm 27.50	23.50 \pm 1.68
ENM	5	96.00 \pm 16.54	26.40 \pm 3.21	40.25 \pm 11.96	211.20 \pm 9.22	22.00 \pm 3.52

Table 2. Coronary arteriole characteristics. Coronary arteriole characteristics in Sham-control and ENM groups. Values are shown as mean \pm SEM. Statistics were analyzed with a students T-test ($p < 0.05$).

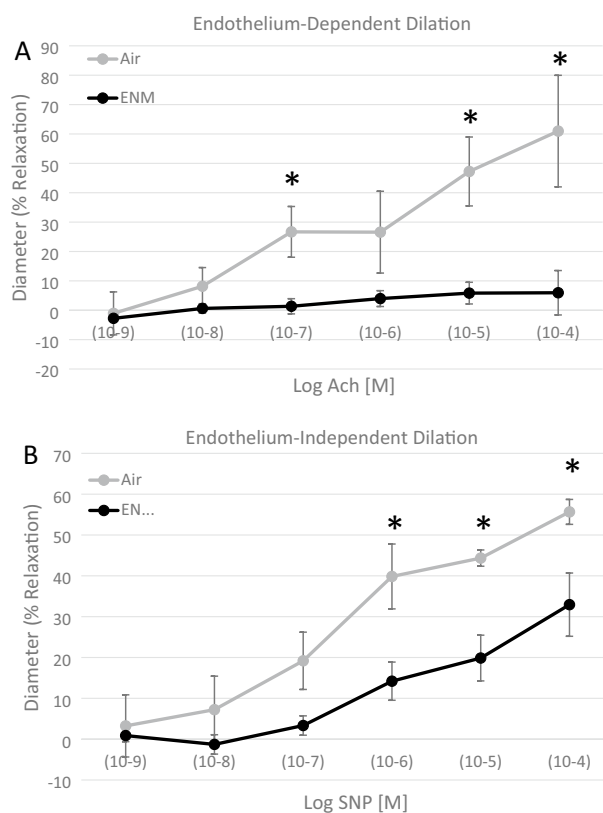


Figure 4. Vascular reactivity of coronary resistance arterioles at 12 months. (A) Endothelium-dependent dilation of coronary arterioles from Sham-Control and nano-TiO₂-exposed animals at 12 months was determined using pressure myography. ACh, Acetylcholine. (B) Endothelium-independent dilation of coronary arterioles from Sham-Control and nano-TiO₂-exposed animals at 12 months was determined using pressure myography. SNP, Sodium nitroprusside. Values are shown as mean \pm SEM. $n = 4-5$. Statistics were analysed with two-way ANOVA., *Indicates $p \leq 0.05$ versus Sham-Control (AIR) group.

the offspring exposed to nano-TiO₂ aerosols during gestation do not develop systemic hypertension or cardiac hypertrophy.

Coronary vascular reactivity. At 12 months, pressure myography was used to evaluate microvascular reactivity of isolated coronary arterioles in response to chemical stimuli. The characteristics of these arterioles can be found in Table 2. Inner diameter and wall thickness were recorded after vessel equilibration and prior to the addition of any chemical agonists; the passive measures were recorded after the reactivity assessments and the addition of Ca²⁺-free PSS (Table 2). No significant differences between the control and exposed arterioles were noted.

To assess endothelium-dependent [acetylcholine (ACH, 1×10^{-9} to 1×10^{-4} M)], and endothelium-independent [sodium nitroprusside (SNP, 1×10^{-9} to 1×10^{-4} M)], reactivity. Endothelium-dependent (Fig. 4A) and -independent (Fig. 4B) reactivity was significantly blunted in exposed offspring compared with controls.

Histopathology. Histological analysis of cardiac tissue (Fig. 5) from F1 offspring of pregnant dams at 12 months exposed to nano-TiO₂ revealed histopathological alterations compared with control tissue. These alterations were characterized by multifocal myocardial inflammation, degeneration, necrosis, loss and/or fibrosis. Findings were principally located in left ventricular free wall subepicardial and/or subendocardial paren-

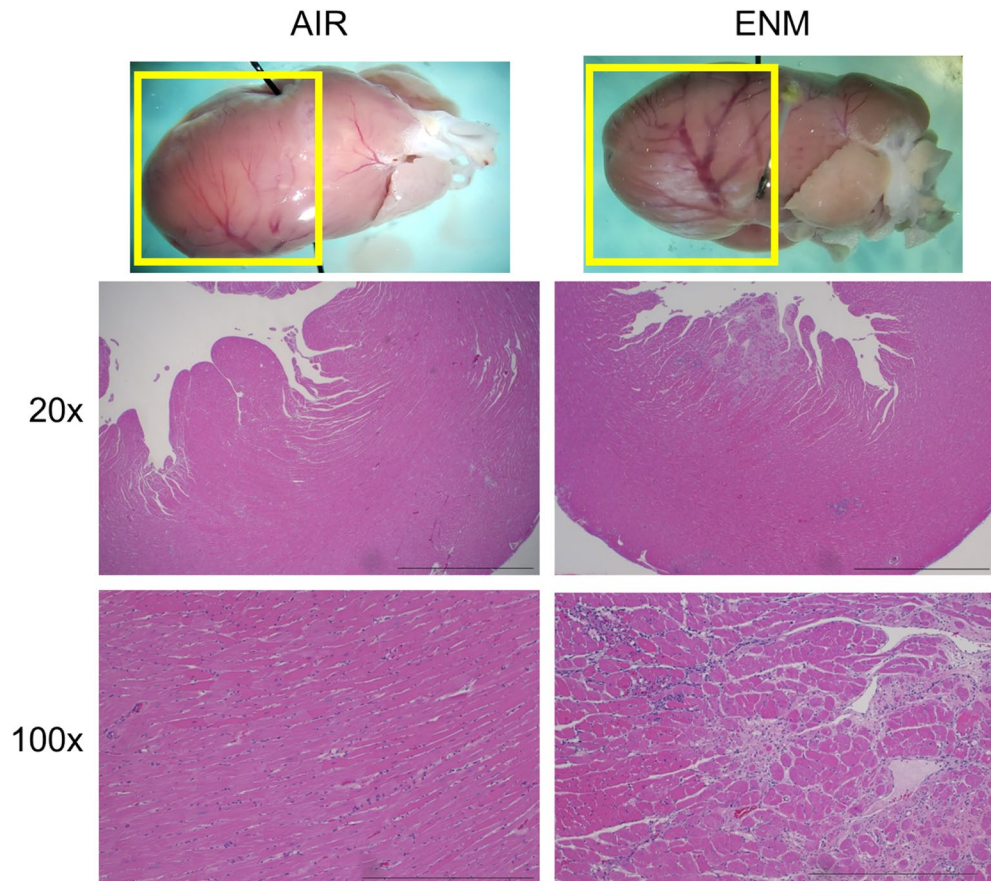


Figure 5. Histological analysis of cardiac tissue at 12 months. Histological analysis of cardiac tissue from offspring of pregnant dams exposed to nano-TiO₂ at 12 months revealed histopathological alterations compared with tissue from the Sham-Control (AIR) group. n = 3. Reference bar at 20× = 2 mm. Reference bar at 100× = 500 μm.

chyma. Collectively, these histopathological alterations suggest that chronic in utero exposure to nano-TiO₂ beginning at GD 4 induces alterations in cardiac morphology that persist into middle age.

Assessment of metabolic plasma proteins. A lack of significant differences between the groups indicates that chronic exposure to nano-TiO₂ in utero beginning at GD 4 is not modulating plasma concentrations of cholesterol, HDL, LDL, or triglycerides (Fig. 6).

Assessment of inflammatory or vascular injury plasma proteins. There were no significant differences in the inflammatory markers measured between the control and exposed groups indicating that chronic exposure to nano-TiO₂ in utero beginning at GD 4 is not modulating plasma concentrations of general inflammatory or vascular injury biomarkers (Fig. 7).

Discussion

Our studies are the first to evaluate progeny health and the development of cardiovascular disease up to 12 months of age. These results suggest that gestational exposure to nano-TiO₂ contributes to the development of cardiovascular and coronary heart disease, as presented in Figs. 4 and 5, but this outcome is not associated with the development of traditional cardiovascular risk factors. In this study, animals exposed during gestation weighed more than controls at 47 weeks of age (Fig. 1). Upon further review this outcome was likely driven by an unequal sex ratio between the groups, with more males in the exposed group and more females in the control group, as males are naturally larger than females. While there were 93 progeny in both the control and exposed groups, this outcome was determined by a greater percentage of large males in the exposed cohort (57% male with an average weight of 854 g) and a greater percentage of smaller females (65% female with an average weight of 533 g) in the control group. While the exposed males weighted less than the control males at this time point, shift in the sex ratio likely skewed the combined weight results (Fig. 1).

Exposed offspring presented blood lipid and cholesterol levels that were similar to the control (Fig. 6). Furthermore, there were no systemic markers of inflammation altered during adulthood after gestational exposure to nano-TiO₂ aerosols (Fig. 7). Therefore, assessments of hypertension, dyslipidemia, glycemia, and inflammation

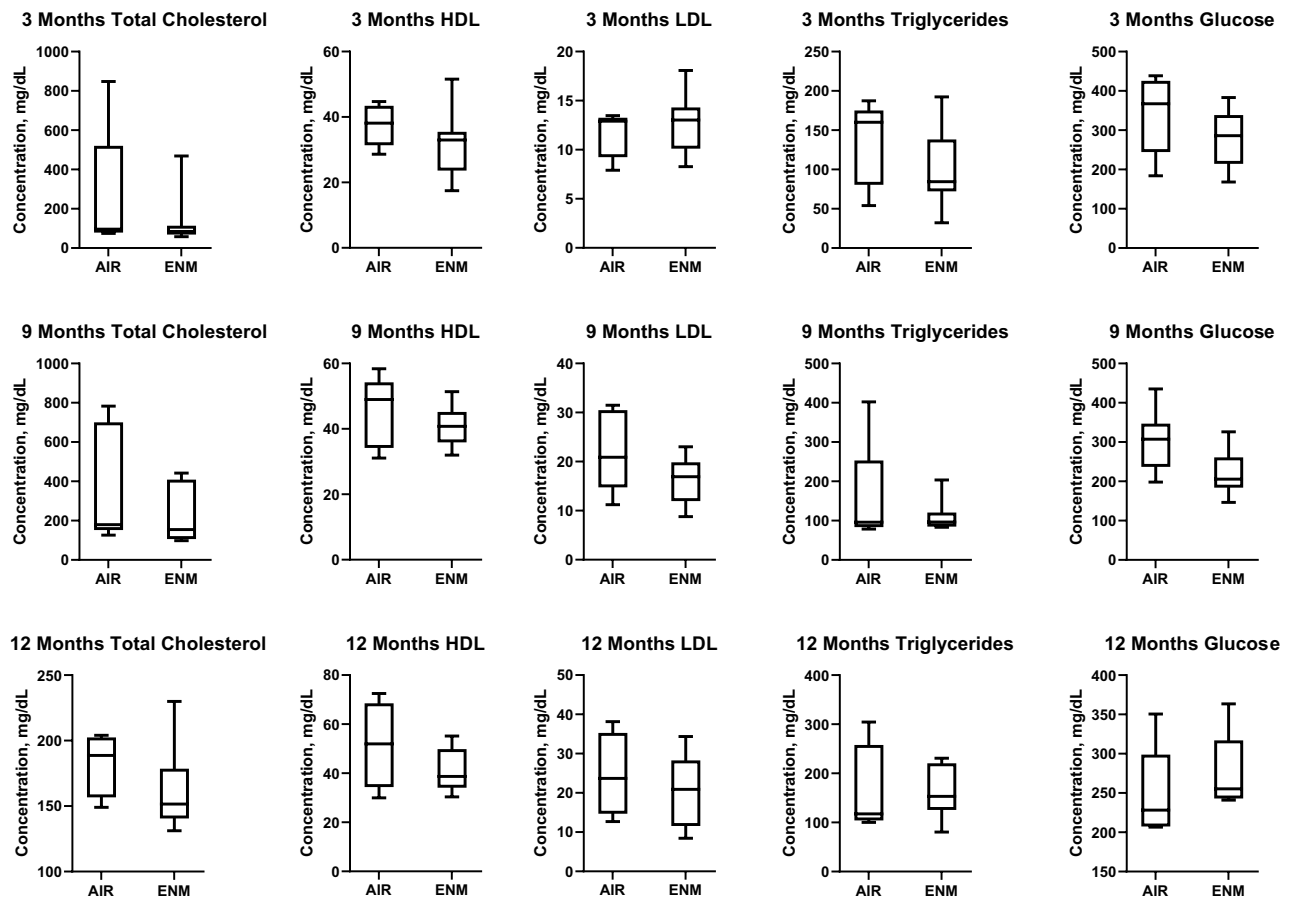


Figure 6. Metabolic panel. Plasma cholesterol, HDL, LDL, and triglycerides were assessed in offspring between Sham-Control or ENM groups at 3, 9, and 12 months of age. HDL, High density lipoprotein; LDL, low density lipoprotein. Values are shown as mean \pm SEM.

in offspring exposed to nano-TiO₂ provided null results; yet evaluations of epicardial arteriolar function at 3 months²⁸ and 12 months demonstrated endothelium-dependent and -independent dysfunction (Fig. 4).

Endothelium-dependent dysfunction is often associated with a reduction in nitric oxide (NO) bioavailability during the development of cardiovascular disease; however, animals in this study also demonstrated an attenuated endothelium-independent response in the presence of a NO donor (Fig. 4B). These results indicate dysfunction of the relaxation of vascular smooth muscle (VSM) of the epicardial arterioles. This is a unique outcome, and the molecular mechanism(s) of this dysfunction are unclear but may be associated with inhibition of normal VSM, cGMP or NADPH oxidase signalling²⁹. Chronic impairment in left ventricular coronary blood flow throughout adulthood may produce the cardiac morphological changes described in Fig. 5. Interestingly, the inflammation and necrosis in hearts from exposed offspring did not lead to an increase in gross heart weight (Fig. 3). These results suggest that the microvascular and coronary impairments observed in this study may not lead to traditional risk factors of cardiovascular disease.

The mechanisms promoting the developmental onset of coronary and cardiac dysfunction after maternal exposure to nano-TiO₂ aerosols is likely a local multifactorial cascade involving particle translocation, oxidative stress, and epigenetic modifications. Engineered nanomaterials have been identified in the placenta and fetal compartment after within 24-h after maternal pulmonary exposure^{20,30}. Recently, studies quantified titanium in human placental and fetal meconium confirming maternal exposure and fetal translocation during pregnancy³¹. Nano-sized materials, including nano-TiO₂ particles, have been shown to access and accumulate in the fetal heart after maternal exposure³². Direct nano-TiO₂ particle-cellular interactions have been shown to impact human DNA methylation³³, thus promoting the theory that nano-TiO₂ translocation to the fetal heart may promote epigenetic mechanisms of cardiac dysfunction. Furthermore, direct nano-TiO₂ particle and cardiomyocyte interactions reduce cellular metabolic activity and increase oxidative stress³⁴. Oxidative stress within BEAS-2B cells has been shown to impact epigenetic processes through increased histone acetylation and decreased methylation³⁵. Oxidative stress may also play a role in endothelium-dependent dysfunction and reduced coronary microvascular dilation, further promoting dysregulation of local oxygen delivery and utilization²⁸. Therefore increased oxidative stress due to nanoparticle translocation and accumulation in the heart may further alter coronary function.

Due to the transgenerational coronary toxicity, genetic modifications may play a significant role in disease progression after gestational nano-TiO₂ exposure¹⁹. Transcriptomic analyses of fetal rat coronary tissue have revealed epigenetic modifications in cardiac, immune, hepatic, renal, and growth signalling²¹, with primary focus

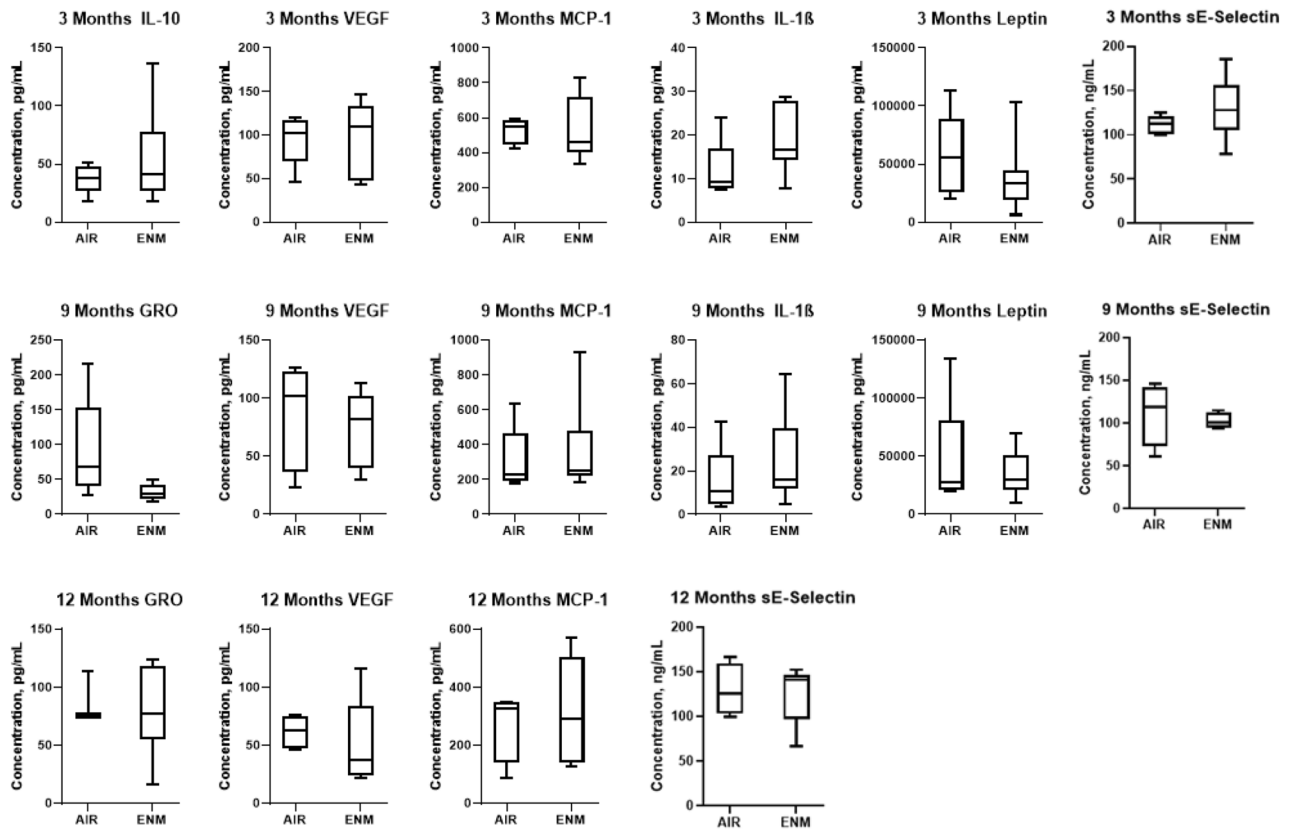


Figure 7. Inflammation and Vascular Injury panel. Plasma IL-10, IL1- β , Leptin, MCP-1, VEGF, GRO, and sE-Selectin were assessed between Sham-Control or ENM offspring at 3, 9, and 12 months of age. IL-10, interleukin 10; IL-1 β , interleukin 1 beta; MCP-1, monocyte chemoattractant protein-1; VEGF, Vascular endothelial growth factor. Values are shown as mean \pm SEM.

on inflammatory signalling and the cardio-hepatic-renal axis. Extrapolation of these alterations into adulthood could manifest as systemic inflammation and impaired blood pressure control; however, neither were reported in the current study. Further study of epigenetic adaptations to offspring after maternal nano-TiO₂ inhalation during pregnancy identify increased DNA methylation in fetal hearts (GD 15), but this outcome is not sustained in young adult mice at 11 weeks of age³⁶. These results may indicate that these epigenetic alterations are not sustained into adulthood, or that physiological compensatory mechanisms may impact functional outcomes. Unfortunately, these studies have yet to be conducted.

Overall, these results identified the development of coronary artery disease and cardiac morphological changes in rats at 1 year of age after gestational exposure to nano-TiO₂ particles through maternal whole-body inhalation. These cardiovascular perturbations were not attributed to the development of traditional risk factors of cardiovascular disease including obesity, hypertension, dyslipidemia, or impaired glycemic control. These data are vital to the understanding of the DOHaD hypothesis as it pertains to cardiovascular disease and contribute to the concept that maternal environmental exposure during pregnancy may be identified as a risk factor for the development of cardiovascular disease in offspring.

Materials and methods

Nanomaterial characterization. Nano-titanium dioxide (nano-TiO₂) powder was acquired from Evonik (Aeroxide TiO₂, Parsippany, NJ). Previous characterization of this powder has determined the composition to be anatase (80%) and rutile (20%) TiO₂, with a primary particle size of 21 nm and a surface area of 48.08 mg²/g²⁴. Characterization of these particles was re-confirmed via dynamic light scattering (DLS) techniques using Zetasizer Nano ZS by Malvern. The size of the agglomerated nanoparticles in diH₂O was measured as 231 \pm 21 nm with Non-Invasive Backscatter optics (NIBS) using a 4 mW, 633 nm laser³⁷. Nano-TiO₂ powder was dried, sieved, and stored under vacuum prior to aerosolization.

Experimental animal model. Pregnant, gestational day (GD) 3 Sprague-Dawley (SD) rats were purchased from Charles River Laboratories (Kingston, NY) and allowed ad libitum access to food and water. All dams were randomly assigned to either Sham-Control (n = 4) or Exposed (n = 5) groups.

Rats were exposed for 4 h per day, 5 days per week, during GD 4–GD 19 of pregnancy. This equated to 10.0 \pm 0.58 days of exposure. The last exposure was completed approximately 36–48 h before delivery (Fig. 8). This exposure paradigm has previously demonstrated fetal growth restriction and impaired fetal coronary health

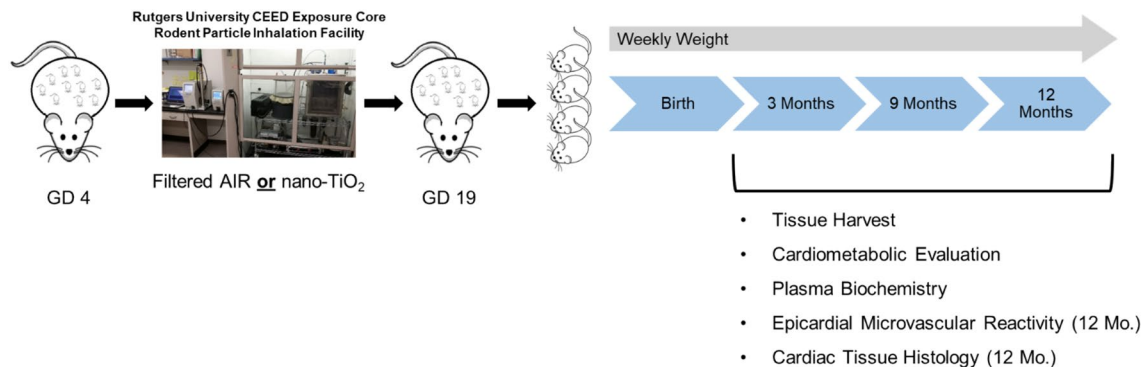


Figure 8. Experimental design. Timed-pregnant Sprague–Dawley rats were assigned to Sham-Control or ENM groups. All animals underwent chronic (4 h/day) whole body exposure to nano-sized titanium dioxide (nano-TiO₂) aerosols or filtered air, beginning at gestational day (GD) 4. Rats delivered (GD 20–22) and offspring were weighted weekly. Body weight intervals were calculated from the weekly weights based on critical stages of rodent growth. Tissue from progeny was collected at 3 months, 9 months and 12 months for analysis. GD, Gestational day; CEED, Center for Environmental Exposures and Disease.

after gestational exposure^{22,24,36,38,39}. For this study we elected to leave dams and litters untouched for one week to prevent maternal rejection of the fetus.

Male and female offspring remained with mothers until weaning, between 3–4 weeks of age, and were randomly assigned to 3, 9, or 12 month groups ($n = 8–10$ progeny per group). Rat ages extrapolate to approximately 10, 24, and 30 human years, respectively⁴⁰. Care was taken to select one male and one female offspring from each litter for assessment. Over the course of the study, 3 control and 2 exposed offspring were removed from study due to health concerns (Table 1). Animals were housed in an AAALAC accredited facility at Rutgers University. All procedures were approved by the Institutional Animal Care and Use Committee of Rutgers University, were executed in accordance with the standards set forth in the “Guide for the Care and Use of Laboratory Animals” of the National Research Council of the National Academies and was conducted in accordance with ARRIVE guidelines.

Engineered nanomaterial whole-body inhalation exposure. Maternal exposures to nano-TiO₂ were performed using a custom rodent inhalation facility designed for whole-body aerosolized nanomaterial inhalation as previously described³⁷ (IESt techno, Morgantown, WV). The collective exposure system consists of a vibrating fluidized bed, a Venturi vacuum pump, cyclone separator, impactor and mixing device, an animal housing chamber, and real-time monitoring devices with feedback control. Nano-TiO₂ aerosols were generated via a high velocity air stream passing through the vibrating fluidized bed and into the Venturi vacuum pump. From there, the aerosols entered the cyclone separator to remove agglomerates greater than 400 nm at an input flow rate of 60 l/min of clean dry air before entering the exposure chamber. Relative mass concentration (9.57 ± 0.3 mg/m³; IESt techno, Morgantown, WV) of the aerosols and size distribution (133.73 ± 1.87 nm; SMPS, TSI, Shoreview, MN) and were monitored in real time (Figure S1). Particle concentration was verified through gravimetric sampling wherein aerosols were collected on a 47 nm PTFE membrane filter and an XP2U micro-balance (Mettler Toledo, Switzerland).

Each exposure lasted approximately 4 h/day, with a calculated lung daily deposition of 43.8 ± 1.2 μ g. Lung deposition was calculated based on previously described mouse methodology and normalized to rat weight and to pregnant rat minute ventilation using the equation: $D = F \cdot V \cdot C \cdot T$, where F is the deposition fraction (14%), V is the minute ventilation based on body weight, C equals the mass concentration (mg/m³), and T equals the exposure duration (minutes)^{14,24}. Control animals were exposed within the same inhalation facility to HEPA-filtered air only for 10 days using an identical protocol.

Body weights. Body weights for all progeny were measured and recorded once a week from the first week after birth to approximately 1 year.

Growth data was analyzed in accordance with an approach to the evaluation of rodent growth data in toxicology studies by Hoffman et al.⁴¹. Weekly data were reported for the first four weeks. Growth data from subsequent weeks were pooled across relevant time intervals to obtain an interval average for each animal within each analysis interval. After collecting weekly data for the first 4 weeks after birth, a three-week moving average was calculated every two weeks at weeks 5, 7, 9, 11, and 13. Thereafter, a five-week moving average was calculated every 4 weeks at weeks 16, 20, and 24 followed by a fifteen-week moving average every 14 weeks at weeks 33, and 47. Data is reported as male, female, and combined progeny for both the control and exposed groups.

Mean arterial pressure (MAP). Rats were anesthetized with isoflurane gas (5% induction, 3% maintenance). The right carotid artery was cannulated to directly assess mean arterial pressure (MAP). A BLPR2 pressure transducer (World Precision Instruments, Sarasota, FL) was used in conjunction with a blood pressure monitor (World Precision Instruments, Sarasota, FL) to measure MAP.

Isolated microvessel preparation. Isolated microvessel responses were recorded in a subset of animals at 12 months of age. Following blood collection, the heart was removed, flushed of excess blood, and placed in physiological salt solution (PSS (in mmol/l): 129.8 NaCl, 5.4 KCl, 0.5 NaH₂PO₄, 0.83 MgSO₄, 19 NaHCO₃, 1.8 CaCl₂, and 5.5 glucose; pH 7.35–7.40) and chilled to 4 °C for dissection. Coronary resistance arterioles (< 160 µm maximum diameter) from the left anterior descending (LAD) artery distribution were isolated, excised, and transferred to a vessel chamber (Living Systems Instrumentation, Burlington, VT, USA) containing oxygenated PSS as previously described^{28,42}. Vessel segments were cannulated with glass pipettes and secured using nylon suture (11–0 ophthalmic, Alcon, UK). Arterioles were extended to their in situ length, pressurized to 45 mmHg with PSS, superfused with warmed (37 °C) oxygenated (21% O₂–5% CO₂–74% N₂) PSS at a rate of 10 ml/minute and allowed to develop spontaneous tone over 30 min of equilibration. Vessel diameters were measured using video calipers (Colorado Video, Boulder, CO, USA).

Following equilibration arteriolar responsiveness to chemical agents was assessed randomly to avoid any ordering effects. Relaxation responses were evaluated via cumulative addition of 100 µL acetylcholine (ACH; 1 × 10⁻⁹ to 1 × 10⁻⁴ M; MP Biomedicals LLC, Santa Ana, CA, USA) to assess endothelium-dependent reactivity or sodium nitroprusside (SNP; 1 × 10⁻⁹ to 1 × 10⁻⁴ M; Thermo Fisher Scientific, Waltham, MA, USA) to assess endothelium-independent reactivity. Following assessments of arteriolar reactivity, the superfusate was replaced with Ca²⁺-free PSS to establish passive tone. All pharmacological agents were dissolved in PSS.

Spontaneous tone was calculated by the following equation: $[(D_M - D_I)/D_M] \times 100$, where D_M is the maximal diameter recorded at 45 mm Hg for the coronary arterioles under Ca²⁺-free PSS, and D_I is the initial steady-state diameter achieved prior to the experimental period.

The responses to ACH and SNP are presented as percent relaxation from spontaneous baseline diameter: $[(D_{SS} - D_{CON})/(D_M - D_{CON})] \times 100$, where D_{SS} remains the steady-state diameter achieved after each chemical bolus, and D_{CON} is the control diameter measured immediately prior to the dose–response experiment. All experimental periods were at least two minutes, and all steady-state diameters were collected for at least one minute. These studies were not blinded as the researcher performing these assessments (PS) also prepared the animals for exposure.

Histology. All histological examinations were performed using standard laboratory procedures.

Representative hearts from a subset of animals at 12 months of age were fixed in 10% neutral buffered formalin, embedded in paraffin blocks, and sectioned to 4 µm-thick sections that were subsequently mounted onto glass slides. Hematoxylin and eosin (H&E) stained slides were assessed by an ACVP board-certified veterinary pathologist who was blinded to the treatment group.

Blood collection. Under isoflurane sedation, blood was collected for clinical chemistry prior to euthanasia. Approximately 4–5 cc of blood was collected directly from the carotid artery cannula and divided into EDTA vacutainers. Blood was centrifuged (1100 RCF, 10 min) to separate the plasma from other constituents. After centrifugation plasma was removed with a transfer pipette, flash frozen in liquid nitrogen, and stored at – 80 °C until analysis. Hearts were removed at sacrifice, after rinsing with 4 °C physiological salt solution, hearts were blotted on a Kimwipe® and weighed.

Plasma biochemistry. Plasma total cholesterol (TC, Pointe Scientific, Canton, MI), auto low density lipoprotein (autoLDL, Pointe Scientific, Canton, MI), auto high density lipoprotein (autoHDL, Pointe Scientific, Canton, MI), and triglyceride (TG, Pointe Scientific, Canton, MI), concentrations were quantitated in duplicate using enzymatic assays with commercially available reagents (Pointe Scientific, Canton, MI) according to manufacturer's instructions in progeny at 3, 9 and 12 months of age.

Multiplex protein analysis. Circulating concentrations for cytokines and chemokines (Leptin, TNFα, GRO IL-4, IL-1β, IL-6, IL-10, IFNγ, MCP-1, VEGF, RANTES) in plasma from Control and Exposed animals were estimated using a Millipore Rat Cytokine/Chemokine Assay (EMD Millipore) at 3, 9, and 12 months of age. Briefly, specific proteins bound to fluorescent beads were detected using a mix of protein-specific, biotinylated detector antibodies followed by incubation with streptavidin-PE. Circulating concentrations for biomarkers of vascular injury (sICAM-1 and sE-Selectin) in plasma from Control and Exposed animals were estimated using a Millipore Rat Vascular Injury Assay (EMD Millipore).

Statistics. All data, with the exception of growth, were assessed by maternal dam not individual progeny. Growth data was analyzed between treatment groups using a two-way ANOVA and was followed by the least-significant difference test (LSD) for multiple comparisons. All statistical analysis was completed with GraphPad Prism 8 (San Diego, CA, USA). Point-to-point differences in the body weight were evaluated using two-way repeated measures analysis of variance (ANOVA) followed by LSD post hoc multiple comparison. Metabolic, inflammatory, and vascular injury data were evaluated using two-way repeated measures analysis of variance (ANOVA) with a Tukey's post hoc analysis when significance was found. Pressure myography data was evaluated using first-order regression equations developed to assess line slope relationships (SigmaPlot 11.0, Systat, San Jose, CA). All data are expressed as mean ± SEM and significant results are indicated at $p \leq 0.05$.

Received: 12 July 2021; Accepted: 15 September 2021

Published online: 29 September 2021

References

- Barker, D. J. The fetal and infant origins of adult disease. *BMJ* **301**, 1111 (1990).
- Fall, C. H. D. in *Early Life Origins of Health and Disease* (eds E. Marelyn Wintour & Julie A. Owens) 8–28 (Springer, 2006).
- Barker, D. J., Bull, A. R., Osmond, C. & Simmonds, S. J. Fetal and placental size and risk of hypertension in adult life. *BMJ* **301**, 259–262. <https://doi.org/10.1136/bmj.301.6746.259> (1990).
- Barker, D. J., Osmond, C., Golding, J., Kuh, D. & Wadsworth, M. E. Growth in utero, blood pressure in childhood and adult life, and mortality from cardiovascular disease. *BMJ* **298**, 564–567. <https://doi.org/10.1136/bmj.298.6673.564> (1989).
- Heindel, J. J., Skalla, L. A., Joubert, B. R., Dilworth, C. H. & Gray, K. A. Review of developmental origins of health and disease publications in environmental epidemiology. *Reprod. Toxicol.* **68**, 34–48. <https://doi.org/10.1016/j.reprotox.2016.11.011> (2017).
- Nobles, C. J. *et al.* Ambient air pollution and fetal growth restriction: Physician diagnosis of fetal growth restriction versus population-based small-for-gestational age. *Sci. Total Environ.* **650**, 2641–2647. <https://doi.org/10.1016/j.scitotenv.2018.09.362> (2019).
- Zhang, M. *et al.* Maternal exposure to ambient particulate matter \leq 2.5 microm during pregnancy and the risk for high blood pressure in childhood. *Hypertension* **72**, 194–201. <https://doi.org/10.1161/HYPERTENSIONAHA.117> (2018).
- Kim, J. B. *et al.* Cumulative lifetime burden of cardiovascular disease from early exposure to air pollution. *J. Am. Heart Assoc.* **9**, e014944. <https://doi.org/10.1161/JAHA.119.014944> (2020).
- Gorr, M. W., Falvo, M. J. & Wold, L. E. Air pollution and other environmental modulators of cardiac function. *Comp. Physiol.* **7**, 1479–1495. <https://doi.org/10.1002/cphy.c170017> (2017).
- Gorr, M. W. *et al.* Early life exposure to air pollution induces adult cardiac dysfunction. *Am. J. Physiol. Heart Circ. Physiol.* **307**, H1353–H1360. <https://doi.org/10.1152/ajpheart.00526.2014> (2014).
- Weldy, C. S., Liu, Y., Liggitt, H. D. & Chin, M. T. In utero exposure to diesel exhaust air pollution promotes adverse intrauterine conditions, resulting in weight gain, altered blood pressure, and increased susceptibility to heart failure in adult mice. *PLoS ONE* **9**, e88582. <https://doi.org/10.1371/journal.pone.0088582> (2014).
- Weldy, C. S. *et al.* In utero and early life exposure to diesel exhaust air pollution increases adult susceptibility to heart failure in mice. *Part Fibre Toxicol.* **10**, 59. <https://doi.org/10.1186/1743-8977-10-59> (2013).
- Liu, Y. *et al.* Inhalation of diesel exhaust does not exacerbate cardiac hypertrophy or heart failure in two mouse models of cardiac hypertrophy. *Part Fibre Toxicol.* **10**, 49. <https://doi.org/10.1186/1743-8977-10-49> (2013).
- Nurkiewicz, T. R. *et al.* Nanoparticle inhalation augments particle-dependent systemic microvascular dysfunction. *Part Fibre Toxicol.* **5**, 1–12 (2008).
- Robichaud, C. O., Uyar, A. E., Darby, M. R., Zucker, L. G. & Wiesner, M. R. Estimates of upper bounds and trends in nano-TiO₂ production as a basis for exposure assessment. *Environ. Sci. Technol.* **43**, 4227–4233 (2009).
- McKinney, W. *et al.* Pulmonary and cardiovascular responses of rats to inhalation of a commercial antimicrobial spray containing titanium dioxide nanoparticles. *Inhal. Toxicol.* **24**, 447–457 (2012).
- Castranova, V. Overview of current toxicological knowledge of engineered nanoparticles. *J. Occup. Environ. Med* **53**, S14–S17 (2011).
- (ed Department of Health and Human Services) (DHHS (NIOSH) Publication No. 2011–160, 2011).
- Wu, Y., Chen, L., Chen, F., Zou, H. & Wang, Z. A key moment for TiO₂(2): Prenatal exposure to TiO₂(2) nanoparticles may inhibit the development of offspring. *Ecotoxicol. Environ. Saf.* **202**, 110911. <https://doi.org/10.1016/j.ecoenv.2020.110911> (2020).
- Fournier, S. B. *et al.* Nanopolystyrene translocation and fetal deposition after acute lung exposure during late-stage pregnancy. *Part Fibre Toxicol.* **17**, 55. <https://doi.org/10.1186/s12989-020-00385-9> (2020).
- Stapleton, P. A. *et al.* Maternal engineered nanomaterial inhalation during gestation alters the fetal transcriptome. *Part Fibre Toxicol.* **15**, 3. <https://doi.org/10.1186/s12989-017-0239-8> (2018).
- Hathaway, Q. A. *et al.* Maternal-engineered nanomaterial exposure disrupts progeny cardiac function and bioenergetics. *Am. J. Physiol. Heart Circ. Physiol.* **312**, H446–H458. <https://doi.org/10.1152/ajpheart.00634.2016> (2017).
- Engler-Chiurazzi, E. B. *et al.* Impacts of prenatal nanomaterial exposure on male adult Sprague-Dawley rat behavior and cognition. *J. Toxicol. Environ. Health A* **79**, 447–452. <https://doi.org/10.1080/15287394.2016.1164101> (2016).
- Stapleton, P. A. *et al.* Maternal engineered nanomaterial exposure and fetal microvascular function: Does the Barker hypothesis apply?. *Am. J. Obstet Gynecol.* **209**(227), e221–e211. <https://doi.org/10.1016/j.ajog.2013.04.036> (2013).
- Hougaard, K. S. *et al.* A perspective on the developmental toxicity of inhaled nanoparticles. *Reprod. Toxicol.* **56**, 118–140. <https://doi.org/10.1016/j.reprotox.2015.05.015> (2015).
- Dugershaw, B. B., Aengenheister, L., Hansen, S. S. K., Hougaard, K. S. & Buerki-Thurnherr, T. Recent insights on indirect mechanisms in developmental toxicity of nanomaterials. *Part Fibre Toxicol.* **17**, 31. <https://doi.org/10.1186/s12989-020-00359-x> (2020).
- Stapleton, P. A. Gestational nanomaterial exposures: Microvascular implications during pregnancy, fetal development and adulthood. *J. Physiol.* **594**, 2161–2173. <https://doi.org/10.1113/JP270581> (2016).
- Stapleton, P. A. *et al.* Microvascular and mitochondrial dysfunction in the female F1 generation after gestational TiO₂ nanoparticle exposure. *Nanotoxicology* **9**, 941–951 (2015).
- Masoud, R. *et al.* Titanium dioxide nanoparticles increase superoxide anion production by acting on NADPH oxidase. *PLoS ONE* **10**, e0144829. <https://doi.org/10.1371/journal.pone.0144829> (2015).
- Campagnolo, L. *et al.* Silver nanoparticles inhaled during pregnancy reach and affect the placenta and the foetus. *Nanotoxicology* **11**, 687–698. <https://doi.org/10.1080/17435390.2017.1343875> (2017).
- Guillard, A. *et al.* Basal Ti level in the human placenta and meconium and evidence of a materno-foetal transfer of food-grade TiO₂ nanoparticles in an ex vivo placental perfusion model. *Part Fibre Toxicol.* **17**, 51. <https://doi.org/10.1186/s12989-020-00381-z> (2020).
- Naserzadeh, P. *et al.* Biocompatibility assessment of titanium dioxide nanoparticles in mice fetoplacental unit. *J. Biomed. Mater. Res. A* **106**, 580–589. <https://doi.org/10.1002/jbm.a.36221> (2018).
- Pogribna, M. *et al.* Effect of titanium dioxide nanoparticles on DNA methylation in multiple human cell lines. *Nanotoxicology* **14**, 534–553. <https://doi.org/10.1080/17435390.2020.1723730> (2020).
- Huerta-Garcia, E. *et al.* Internalization of titanium dioxide nanoparticles is cytotoxic for H9c2 rat cardiomyoblasts. *Molecules* <https://doi.org/10.3390/molecules23081955> (2018).
- Niu, Y., DesMarais, T. L., Tong, Z., Yao, Y. & Costa, M. Oxidative stress alters global histone modification and DNA methylation. *Free Radic. Biol. Med.* **82**, 22–28. <https://doi.org/10.1016/j.freeradbiomed.2015.01.028> (2015).
- Kunovac, A. *et al.* ROS promote epigenetic remodeling and cardiac dysfunction in offspring following maternal engineered nanomaterial (ENM) exposure. *Part Fibre Toxicol.* **16**, 24. <https://doi.org/10.1186/s12989-019-0310-8> (2019).
- Fournier, S. B., Kallontzi, S., Fabris, L., Love, C. & Stapleton, P. A. Effect of gestational age on maternofetal vascular function following single maternal engineered nanoparticle exposure. *Cardiovasc. Toxicol.* <https://doi.org/10.1007/s12012-019-09505-0> (2019).

38. Kunovac, A., Hathaway, Q. A., Pinti, M. V., Taylor, A. D. & Hollander, J. M. Cardiovascular adaptations to particle inhalation exposure: Molecular mechanisms of the toxicology. *Am. J. Physiol. Heart Circ. Physiol.* **319**, H282–h305. <https://doi.org/10.1152/ajpheart.00026.2020> (2020).
39. Hathaway, Q. A. *et al.* miRNA-378a as a key regulator of cardiovascular health following engineered nanomaterial inhalation exposure. *Nanotoxicology* **13**, 644–663. <https://doi.org/10.1080/17435390.2019.1570372> (2019).
40. Sengupta, P. The laboratory rat: Relating its age with human's. *Int. J. Prev. Med.* **4**, 624–630 (2013).
41. Hoffman, W. P., Ness, D. K. & van Lier, R. B. Analysis of rodent growth data in toxicology studies. *Toxicol. Sci.* **66**, 313–319. <https://doi.org/10.1093/toxsci/66.2.313> (2002).
42. Stapleton, P. A. *et al.* Impairment of coronary arteriolar endothelium-dependent dilation after multi-walled carbon nanotube inhalation: A time-course study. *Int. J. Mol. Sci.* **13**, 13781–13803. <https://doi.org/10.3390/ijms131113781> (2012).

Acknowledgements

We would like to recognize Ms. Charlotte Love and Brittany Phan for their work weighing the animals pertaining to Figure 1. This work was supported by the National Institute of Environmental Health Sciences (R00-ES024783 and R01-ES031285), Rutgers Center for Environmental Exposures and Disease (P30-ES005022), and Rutgers Joint Graduate Program in Toxicology (T32-ES007148). Lastly, we have no conflict of interest to report.

Author contributions

S.F. assisted with experimental design, data collection, data analysis, figure development, and writing of the original manuscript; V.L. assisted with data collection and data analysis; M.G. completed the histological studies and interpreted the results; L.F. characterized the nanomaterial for these studies and interpreted the results; P.S. assisted with development of the experimental design, data analysis and writing of the manuscript and revision.

Competing interests

The authors declare no competing interests.

Additional information

Supplementary Information The online version contains supplementary material available at <https://doi.org/10.1038/s41598-021-98818-8>.

Correspondence and requests for materials should be addressed to P.A.S.

Reprints and permissions information is available at www.nature.com/reprints.

Publisher's note Springer Nature remains neutral with regard to jurisdictional claims in published maps and institutional affiliations.



Open Access This article is licensed under a Creative Commons Attribution 4.0 International License, which permits use, sharing, adaptation, distribution and reproduction in any medium or format, as long as you give appropriate credit to the original author(s) and the source, provide a link to the Creative Commons licence, and indicate if changes were made. The images or other third party material in this article are included in the article's Creative Commons licence, unless indicated otherwise in a credit line to the material. If material is not included in the article's Creative Commons licence and your intended use is not permitted by statutory regulation or exceeds the permitted use, you will need to obtain permission directly from the copyright holder. To view a copy of this licence, visit <http://creativecommons.org/licenses/by/4.0/>.

© The Author(s) 2021