

Systemic approach to the management of infrastructure safety: Organizational items

*Original*

Systemic approach to the management of infrastructure safety: Organizational items / Troisi, R.; Castaldo, P.; Arena, L.; Giovanniello, M. A.. - In: AIP CONFERENCE PROCEEDINGS. - ISSN 0094-243X. - ELETTRONICO. - 2928:(2023), pp. 1-7. (Intervento presentato al convegno 7th World Multidisciplinary Civil Engineering-Architecture-Urban Planning Symposium, WMCAUS 2022 tenutosi a cze nel 2022) [10.1063/5.0170450].

*Availability:*

This version is available at: 11583/2984721 since: 2023-12-26T14:30:53Z

*Publisher:*

American Institute of Physics AIP

*Published*

DOI:10.1063/5.0170450

*Terms of use:*

This article is made available under terms and conditions as specified in the corresponding bibliographic description in the repository

*Publisher copyright*

AIP postprint/Author's Accepted Manuscript e postprint versione editoriale/Version of Record

(Article begins on next page)

# Systemic Approach to the Management of Infrastructure Safety: Organizational Items

Roberta Troisi<sup>1,5</sup>, Paolo Castaldo<sup>2,5, a)</sup>, Livia Arena<sup>3</sup>, Monica Anna Giovanniello<sup>4,5</sup>

<sup>1</sup> *University of Salerno, 84084, Fisciano (SA), Italy*

<sup>2</sup> *Politecnico di Torino, 10129, Turin, Italy*

<sup>3</sup> *University of Salerno, 84084, Fisciano (SA), Italy*

<sup>4</sup> *Department of Economia Aplicada, University of Balearic Islands, Palma, Illes Balears, Spain*

<sup>5</sup> *Osservatorio per lo Sviluppo Territoriale, University of Salerno, 84084, Fisciano (SA), Italy*

<sup>a)</sup> Corresponding author: [paolo.castaldo@polito.it](mailto:paolo.castaldo@polito.it)

**Abstract.** This study deals with the organizational items within a systemic approach finalized to make the safety management of road infrastructures more sustainable at a scale of territory. In fact, the infrastructure safety is a very relevant topic in many states with structural systems built some decades ago. Beyond the inherent structural problems, other items are worthy to be investigated, such as, social, economic and organizational aspects. With this aim, the study describes a systemic approach finalized to make all the public and private stakeholders active actors in the management process by improving the organizational items: interaction and mode of governance. In detail, regarding a case study in an Italian region, the authors propose to take on the satellite-based information to investigate the structural safety problems of the infrastructures at a scale of territory. Along this issue, risk or alert maps are properly defined. Successively, useful suggestions are discussed with the focus to increase the interactions between the different actors for a better management of the safety. The recommendations are able to improve the governance mode and decision process with a more all-inclusive level of organization.

## INTRODUCTION

This study deals with the organizational items within a systemic approach finalized to make the safety management of road infrastructures more sustainable at a scale of territory. In fact, the infrastructure safety is a very relevant topic in many states with structural systems (e.g., roads, bridges, viaducts and highways) built some decades ago. Beyond the inherent structural problems, other items are worthy to be investigated, such as, social, economic and organizational aspects [1-5].

With this aim, the study describes a systemic approach finalized to make all the public and private stakeholders active actors in the management process by improving the organizational items: interaction and mode of governance. Several literature studies describe plans and policies aimed at ensuring the protection of the infrastructures against natural or anthropic events [6-10].

In fact, the research [6] discusses that an increasing number of planning activities by public authorities and governments are more and more devoted to guarantee a protection of urban communities, including all the infrastructures, from tidal rise, flooding and storm surges consequential to climate changes [7] as well as from geological phenomena, e.g., liquefaction events caused by earthquakes. Other researches (e.g., [8]) have provided improvements to the planning of territories, affected by natural hazards (i.e., landslides), considering the risk perception of the citizens by means of surveys.

Some approaches are based on risk maps elaborated through the Geographical Information System (GIS) technique [9]. A framework with integrated and systemic features for safety and security management of road infrastructures is described in [10].

Similarly, “Bridge Management Systems” (BMS) strategies have been developed [11] with various degrees of success around the world as commented in the next.

Two BMSs have been adopted in the U.S.: PONTIS and BRIDGIT. PONTIS is probably the most advanced BMS and with its top-down approach can be finalized to optimize bridge funding for rehabilitation, maintenance and repair as well as also for improvements to bridge structures at the network level.

In Europe, a program known as “BRIDGE Management in Europe” (BRIME) has been assumed by the member countries of the European Economic Community with the focus to develop a comprehensive BMS able to meet the specificities of the European Road Network.

In Italy, different BMSs have been proposed by public and private agencies having the responsibilities of bridges and infrastructures [12].

All the above-mentioned strategies employ different Structural Health Monitoring (SHM) techniques: in-situ sensors or remote sensing, i.e., the Differential Interferometry Synthetic Aperture Radar (DInSAR) as commented in [13-14].

Regarding a case study in an Italian region, the authors propose to take on the satellite information to investigate the structural safety problems of the infrastructures at a scale of territory. Therefore, risk or alert maps referred to natural or time-dependent phenomena (e.g., seismic events, slow landslide events, subsidence or temperature or soil-structure interaction effects, deterioration/degradation phenomena, seasonal effects) are properly defined at a scale of territory.

Successively, useful suggestions are discussed with the focus to increase the interactions between the different actors for a better management of the safety. The recommendations are able to select the most appropriate governance mode and improve the decision process with a more all-inclusive level of organization.

## **THE SATELLITE DInSAR MONITORING**

The DInSAR data [15-16] are achieved by means of a satellite constellation (e.g., the Italian COSMOSkyMed) to quantify the movements on the topographic surface, within a timeframe of interest, as a consequence of different possible phenomena as previously commented. The data are received from the sensors along the Lower Earth Orbits, which are placed between 500 - 800 km from the Earth and follow the polar orbits.

The DInSAR-derived data can be characterized by a high accuracy that depends on some parameters (e.g., coherence) [15-16]. As explicated in [15-16], the accuracy varies in a range between 1 and 2 mm/year as for the average velocity and between 5 and 10 mm as for the single displacement time series.

These data can be elaborated in the GIS environment with the focus to illustrate the displacements acting on the infrastructures through specific thematic (alert or risk) maps. Therefore, it is possible to have a spatial view of the infrastructures safety in a context of territory. More details may be found in [17]-[18].

The growing interest for the DInSAR data has led to an increasing their diffusion with several applications in as many projects and case studies focused on the detection, mapping and monitoring of ground displacements after the occurrence of hazardous phenomena [19]. This large diffusion is due to several advantages: the large spatial coverage achievable through the SAR images; the subcentimetric accuracy for the measurements in terms of displacements; the sustainable cost-effectiveness of the satellite monitoring in comparison to the traditional in-situ sensors.

It is noteworthy to specify that, beyond the monitoring results, the judgments of expert engineers are always necessary to assess the structural criticisms and their impacts on the infrastructures safety.

## **ORGANIZATIONAL ITEMS IN THE INFRASTRUCTURES SAFETY**

The abovementioned thematic maps permit to identify the stakeholders directly involved in the different issues and modify the interactions between them to improve the organization mode in the management procedures of the territory.

Figure 1 shows the organizational environment with the technical elaborations. In fact, management improvements can be obtained by improving the relationships between the different actors and the various levels of administration as well as defining the priority of the interventions. Along this issue, appropriate governance modes can be selected to improve the decision process and delineate the investment plans in consideration of both the different competences and criticisms [20-21].

Specifically, it is possible to recognize a sub-system of infrastructures having mainly functionality connections with similar characteristics [22]. Then, the alert or risk maps can provide useful provisions in terms of interventions

priority. It follows that two different governance modes can be chosen: fragmentation and coordination [23-24]. The first one can be adopted, for example, for infrastructures characterised by a similar alert or risk without emergency. Differently, infrastructures characterised by different alerts or risks with emergency require the second mode of governance. More details may be found in [17]-[18].

The right selection of a governance mode ensures a better and more sustainable administration of the safety by the actors.

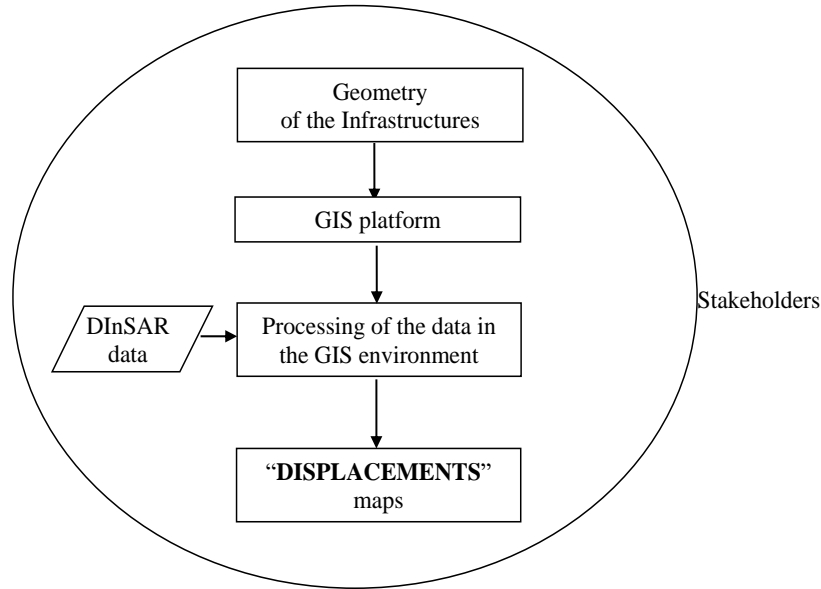


FIGURE 1. Organizational environment.

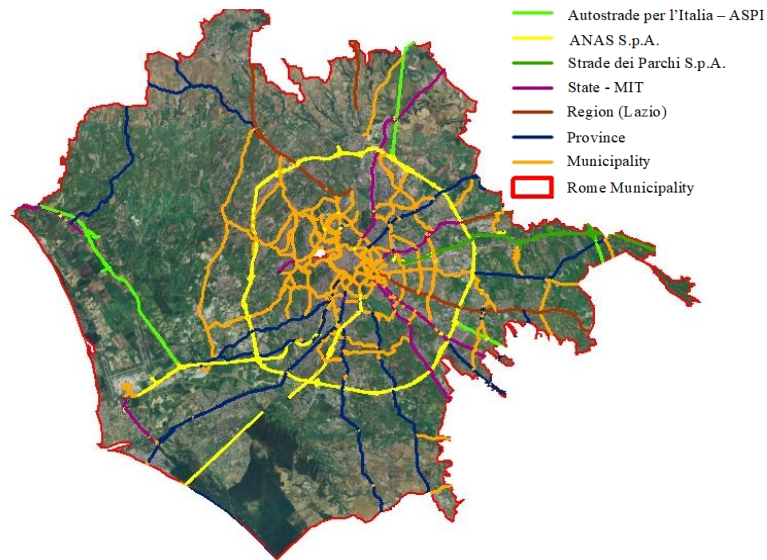
## CASE STUDY IN AN ITALIAN REGION: MAIN RESULTS WITH RELEVANT IMPLICATIONS

Considering the Rome Municipality (Italy) within the research project [19], a group of road infrastructures has been identified and classified as a sub-system, since characterised by similar traffic flows, as can be seen in Figure 2. Specifically, Figure 2 is a thematic map in GIS showing the territory of the Rome Municipality with the selected infrastructures.

TABLE 1. The stakeholders jointed to the selected infrastructures.

Road infrastructures	Actors
“A1 - Autostrada del Sole”	“AutoStrade Per l’Italia - ASPI”
“A12 - Autostrada Azzurra”	“AutoStrade Per l’Italia - ASPI”
“A91”	“ANAS S.p.A.”
“A24”	“Strada dei Parchi S.p.A.”
“Grande Raccordo Anulare”	“ANAS S.p.A.”
“SP 216 - Maremmana”	Province
“Lungotevere”	Municipality
“Circonvallazione”	Municipality

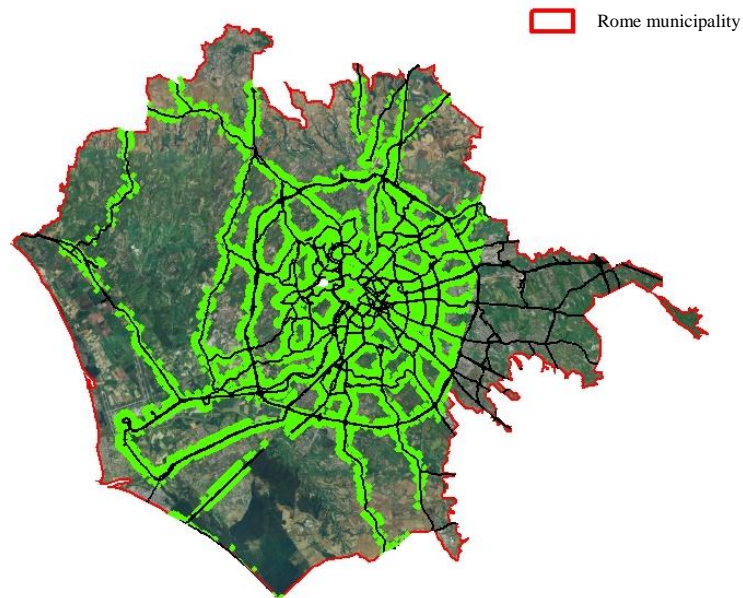
### road infrastructure network subsystem



**FIGURE 2.** The sub-system of infrastructures.

Table 1 presents the list of the stakeholders who have safety responsibilities: “ANAS S.p.A.”, “Strada dei Parchi S.p.A.”, “AutoStrade Per l’Italia - ASPI”, Province and Municipality.

The elaborations described in Figure 1 have been applied developing a DInSAR-based analysis at a scale of territory, as explicated in the next.



**FIGURE 3.** The monitored points along the descending orbit.

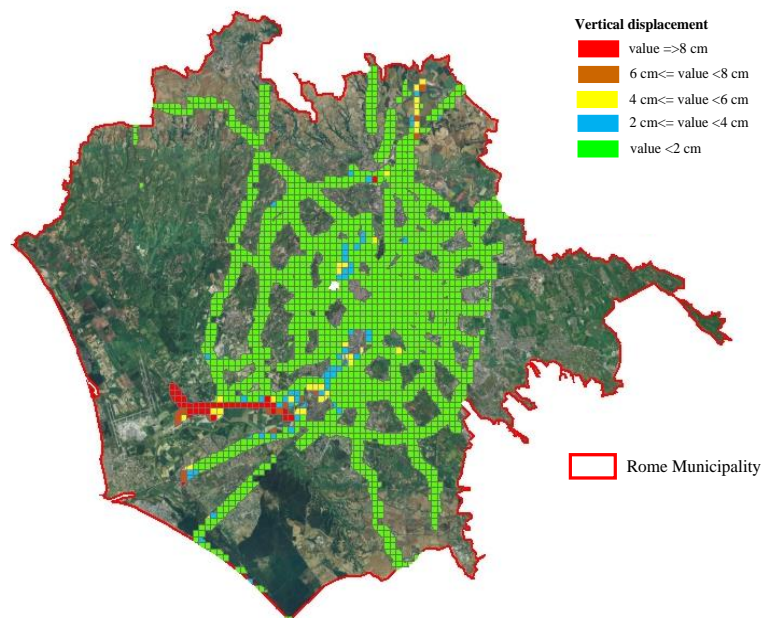
On the thematic map of Figure 2 in GIS, we have imported the DInSAR data derived from the SAR images (COSMO-SkyMED) of the descending orbit during the last 8 years. After that, these data have been properly

elaborated imposing 0.6 as coherence value [20]. This latter permitted to identify the monitoring data referred to quite 6 millions of points (see Figure 3).

With the scope to compute the displacements, “cells” characterised by a dimension of 50x50m [15,26] have been adopted to divide the infrastructures. Successively, the data have been processed to compute the vertical displacements, as illustrated in Figure 4, in agreement with [15,26].

The thematic map of Figure 4 represents a kind of alert map and can be employed to define a risk map by means of further and more detailed analyses to assess the safety conditions in consideration of specific damage thresholds [5], as developed in [17]-[18].

The results indicate low intensities of the displacements with few potential damages in terms of high intensities of the vertical displacements affecting a group of infrastructures, managed by the following actors: ANAS S.p.A., Municipality, Province and “AutoStrade Per l’Italia - ASPI”. It derives that a common mode of governance based on coordination can be selected by all the actors in the territorial area. Instead, a fragmentation approach has to be adopted by ANAS S.p.A., Municipality, Province and “AutoStrade Per l’Italia - ASPI” to manage the safety of the specific group of infrastructures presenting high movements. Along this issue, interventions have to be scheduled on basis of the priority expressed as the intensity of the displacements.



**FIGURE 4.** Vertical displacements.

The results represent a useful contribution to the field of satellite-based territorial analyses finalised to safety management of the infrastructures. Particularly, this investigation at a scale of territory permits to improve the organizational aspects, achieve an active role of the various actors and delineate the most proper mode of governance. Therefore, it is possible to schedule the interventions and the sustainable and proper investments.

## CONCLUSION

The work describes the organizational items within a systemic approach finalised to make the safety management of road infrastructures more sustainable at a scale of territory. Some organizational improvements for this scope are commented. The infrastructure safety is a very relevant topic in many states with structural systems built some decades ago. In addition to the inherent structural problems, other items are worthy to be investigated, such as, social, economic and organizational aspects.

With this aim, the study describes a systemic approach finalised to make all the public or private stakeholders active actors in the management process by improving the organizational items. In detail, regarding a case study in an Italian region, the authors propose to take on the satellite data to investigate the structural safety problems of the

infrastructures at a scale of territory. Therefore, risk or alert maps referred to natural or time-dependent phenomena are properly defined at a scale of territory.

Successively, useful suggestions are discussed with the focus to increase the interactions between the different actors for a better management of the safety. The recommendations are able to improve the governance mode and decision process with a more all-inclusive level of organization. In fact, the case study results evidence that the satellite monitoring of the territorial infrastructures is a technical instrument useful to the proposed organizational improvements. Specifically, the monitoring results suggest that a common mode of governance based on coordination can be selected by all the actors in the territorial sub-system. Instead, a fragmentation approach has to be adopted by ANAS S.p.A., Municipality, Province and “AutoStrade Per l’Italia - ASPI” to manage the safety of the specific infrastructures presenting high movements. Along this issue, interventions have to be scheduled on basis of the priority expressed as the intensity of the displacements.

The right selection of the mode of governance ensures a better and more effective administration of the safety by the actors to schedule the interventions and the sustainable and proper investments.

## REFERENCES

1. B. Blochl, and B. Braun, “Economic assessment of landslide risks in the Schwabian Alb, Germany - research framework and first results of homeowners and experts surveys,” *Nat Hazards Earth Syst Sci*, vol. **5**, pp. 389-396, 2005.
2. V. Cotecchia, “The Second Hans Cloos Lecture. Experience drawn from the great Ancona landslide of 1982,” *Bulletin of Engineering Geology and the Environment*, vol. **65**, pp. 1–41, 2006.
3. G. Iovine, O. Petrucci, V. Rizzo and C. Tansi, “The March 7th 2005 Cavallerizzo (Cerzeto) landslide in Calabria – SouthernItaly,” *Proceedings of the 10th IAEG Congress*, Nottingham, Great Britain, 6–10 September 2006, 785, pp. 1–12, 2006.
4. M. F. Mansour, N. R. Morgenstern, and C. D. Martin, “Expected damage from displacement of slow-moving slides,” *Landslides*, vol. **7**, pp. 117–131, 2011.
5. P. Castaldo, M. Calvello, and B. Palazzo, “Probabilistic analysis of excavation-induced damages to existing structures,” *Computers and Geotechnics*, vol. **53**, pp. 17-30, 2013.
6. W. McWilliam, R. Brown, P. Eagles, and M. Seasons, “Evaluation of planning policy for protecting green infrastructure from loss and degradation due to residential encroachment,” *Land Use Policy*, vol. **47**, pp. 459-467, 2015.
7. C. Kubal, D. Haase, V. Meyer, S. Scheuer, “Integrated urban flood risk assessment – adapting a multi-criteria approach to a city,” *Nat. Hazards Earth Syst. Sci.*, vol. **9** (6), pp. 1881–1895, 2009.
8. M. B. de Mendonca, and F. T. Gullo, “Landslide risk perception survey in Angra dos Reis (Rio de Janeiro, southeastern Brazil): A contribution to support planning of non-structural measures,” *Land Use Policy*, vol. **91**, pp. 104415, 2020.
9. Y. Hossein, and E. Sachio, “Geothermal power plant site selection using GIS in Sabalan area, NW IRAN/Natural Resources and Environment (NRE),” In: *Proceedings of 6th Annual International Conference on Geographical Information Technology and Applications*. GIS Development Press, Kuala Lumpur, pp. 1–18, 2007.
10. R., Troisi, and G. Alfano, “Towns as Safety Organizational Fields: An Institutional Framework in Times of Emergency,” *Sustainability*, vol. **11**(24), pp. 7025, 2019.
11. E. Figueiredo, I. Moldovan, and M. Barata Marques, “Condition Assessment of Bridges: Past, Present and Future. A Complementary Approach,” Universidade Católica Editora, Unipessoal, Lda ISBN: 978-972-54-0402-7, 2013.
12. Italian Infrastructure and Transport Ministry (MIT) “Guidelines for classification and management risk, security assessment and monitoring of existing bridges,” 2020.
13. M. Crosetto, E. Biescas, and J. Duro, “Generation of advanced ERS and Envisat interferometric SAR products using the stable point network technique,” *Photogramm. Eng. Remote Sens.*, vol. **4**, pp. 443–450, 2008.
14. M. Crosetto, O. Monserrat, M. Cuevas-González, N. Devanthery, and B. Crippa, “Persistent scatterer interferometry: a review,” *ISPRS J. Photogrammetry Remote Sens.*, vol. **115**, pp. 78–89, 2016.
15. D. Peduto, L. Cascini, L. Arena, S. Ferlisi, G. Fornaro, and D. Reale, “A general framework and related procedures for multiscale analyses of DInSAR data in subsiding urban areas,” *ISPRS Journal of Photogrammetry and Remote Sensing*, vol. **105**, pp. 186-210, ISSN 0924-2716, 2015.

16. P. Berardino, G. Fornaro, R. Lanari, and E. Sansosti, "A new algorithm for surface deformation monitoring based on small baseline differential SAR interferograms," *IEEE Trans. Geosci. Remote Sens.*, vol. **40** (11), pp. 2375–2383, 2002.
17. R. Troisi, L. Arena, "Organizational Aspects of Sustainable Infrastructure Safety Planning by Means of Alert Maps," *Sustainability*, vol. **14**(4), pp. 2335, 2022.
18. R. Troisi, P. Castaldo, "Technical and organizational challenges in the risk management of road infrastructures", *Journal of Risk Research*, 2022, DOI:10.1080/13669877.2022.2028884.
19. ReLUIS, "Research project between the Italian Civil Protection Department and the Italian Universities: WP 11 – Task 11.4: Monitoring and satellite data", 2019-2021.
20. R. Künneke, J. Groenewegen, C. Ménard, "Aligning modes of organization with technology: Critical transactions in the reform of infrastructures," *Journal of Economic Behavior & Organization*, vol. **75**(3), pp. 494-505, 2010.
21. R. Zimmerman, "Decision-making and the vulnerability of interdependent critical infrastructure," In 2004 IEEE International Conference on Systems, Man and Cybernetics (IEEE Cat. No. 04CH37583) (5: 4059-4063), IEEE, (2004, October).
22. D. Lauwers, "Functional road categorization: new concepts and challenges related to traffic safety, traffic management and urban design: reflections based on practices in Belgium confronted with some eastern European cases," *Transportation and Land Use Interaction*, pp. 149-164, Politechnica Press, 2008.
23. S. Faraj, Y. Xiao, "Coordination in fast-response organizations," *Management science*, vol. **52**(8), pp. 1155-1169, 2006.
24. C. Perrow, "Normal Accidents: Living with High-Risk Technologies," Basic Books, New York, 1984.
25. Y. Yang, A. Pepe, M. Manzo, M. Bonano, D. N. Liang, and R. Lanari, "A simple solution to mitigate noise effects in time-redundant sequences of small baseline multi-look DInSAR interferograms," *Remote sensing letters*, vol. **4**(6), pp. 609-618, 2013.
26. M. Calvello, L. Cascini, and S. Mastroianni "Landslide zoning over large areas from a sample inventory by means of scale-dependent terrain units", *Geomorphology*, vol. **182**, pp. 33-48, 2013.