

2024

University evaluation toolkit: Navigating evaluative practices across all levels with RUFDATAE

Elizabeth J. Cook
Edith Cowan University

Kena Cabral Morales
Edith Cowan University

Follow this and additional works at: <https://ro.ecu.edu.au/ecuworks2022-2026>



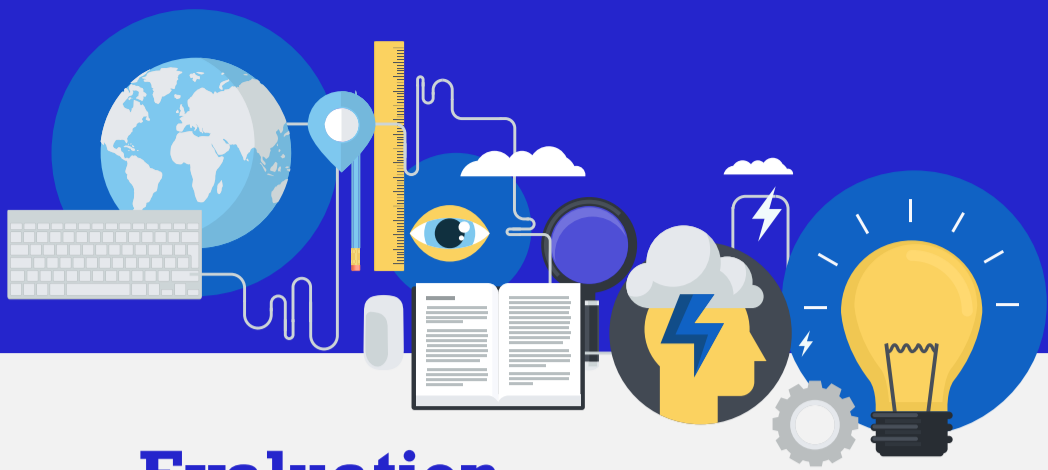
Part of the [Higher Education Commons](#)

[10.25958/x4f7-dw96](https://doi.org/10.25958/x4f7-dw96)

Cook, E.J., & Cabral Morales, K. (2024). *University evaluation toolkit: Navigating evaluative practices across all levels with RUFDATAE* [poster]. Edith Cowan University. <https://doi.org/10.25958/x4f7-dw96>

This Other is posted at Research Online.

<https://ro.ecu.edu.au/ecuworks2022-2026/3392>



University Evaluation toolkit

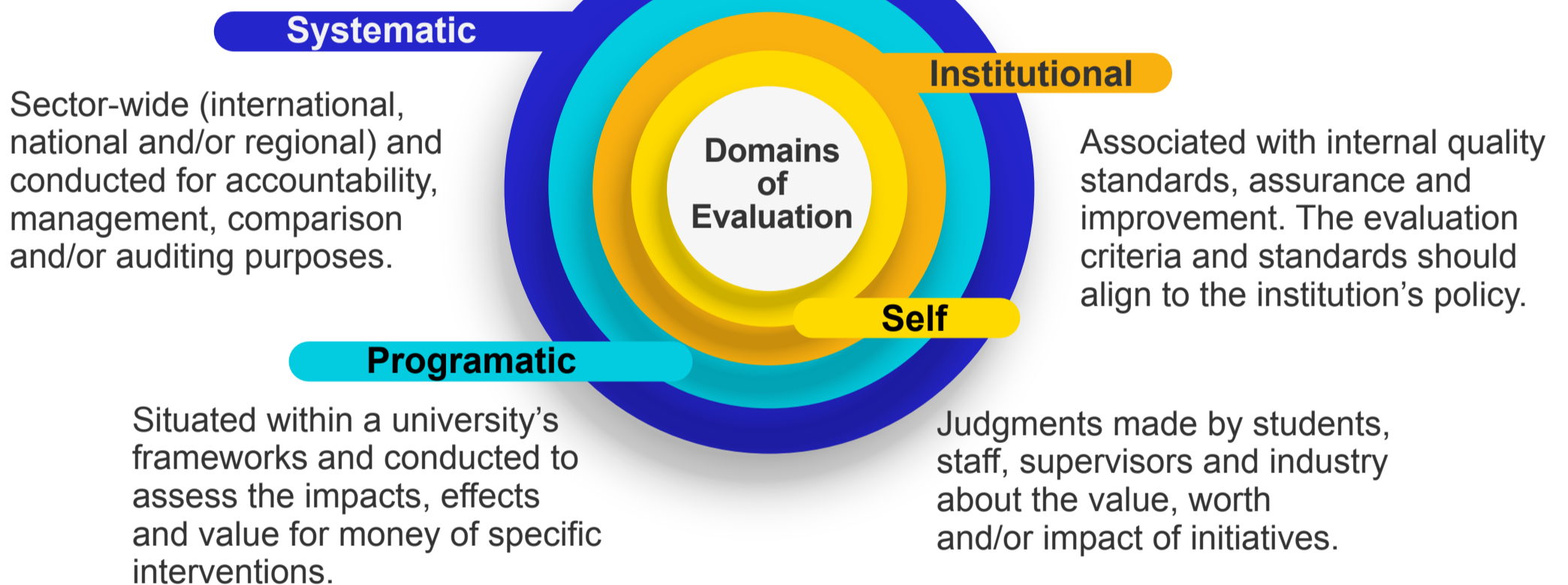
Evaluation

“the generation of a credible and systematic determination of merit, worth, and/or significance of an object through the application of defensible criteria and standards to demonstrably relevant empirical facts” (Gullickson, 2020, p. 4).

Difference between evaluation and research

“Evaluation is distinct from research in its use of criteria and standards to form judgments, which are used for decision-making, development and/or accountability purposes” (Cook, 2021, p. 215).

University Evaluation



RUFDATAE Evaluation planning framework (building on the work of Saunders, 2000)

Prompts reflection and decision-making for evaluation planning at any level (i.e., systemic, programmatic, institutional and/or self). It has no rules or limitations and can be used as a checklist or planning tool.

- R** What are the **Reasons** and purposes for the evaluation?
- U** How will the university **Use** the evaluation?
- F** What are the evaluation **Foci**?
- D** What **Data** and evidence should be collected and analysed?
- A** Who is the **Audience**?
- T** When should evaluation **Take place** (or Timing)?
- A** Whose **Agency** will be required?
- E** What are the **Ethical** considerations?

Author: Elizabeth J. Cook
Senior Analyst, Edith Cowan University
Centre for Higher Education Research and Evaluation, Lancaster University.

 <https://orcid.org/0000-0002-8406-4049>

Graphic Designer: Kena Cabral Morales
Senior Digital Resources Developer
Edith Cowan University.

References

- Cook, E. J. (2021). Evaluation of work-integrated learning: A realist synthesis and toolkit to enhance university evaluative practices. *International Journal of Work-Integrated Learning*, 22(2), 213-239. <https://ro.ecu.edu.au/ecuworkspost2013/10403>
- Gullickson, A. M. (2020). The whole elephant: Defining evaluation. *Evaluation and Program Planning*, 79, Article 101787 <https://doi.org/10.1016/j.evalprogplan.2020.101787>
- Saunders, M. (2000). Beginning an evaluation with RUFDATA: Theorizing a practical approach to evaluation planning. *Evaluation*, 6(1), 7-2 <https://doi.org/10.1177/13563890022209082>