

# Dental composites with strength after aging improved by using anodic nanoporous fillers: experimental results, modeling and simulations

Amin Ghorbanhossaini, Roham Rafiee, Andrei Pligovka, Marco Salerno

## Supporting Information

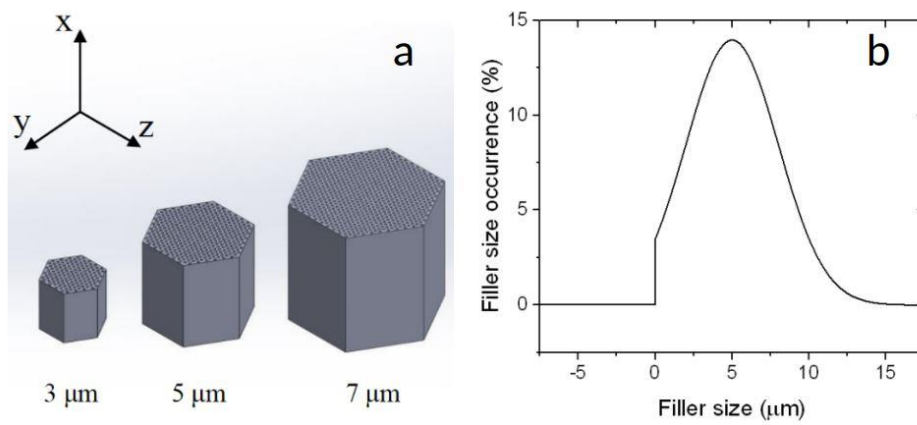


Fig.S1: Truncated Gaussian distribution for the APA filler size

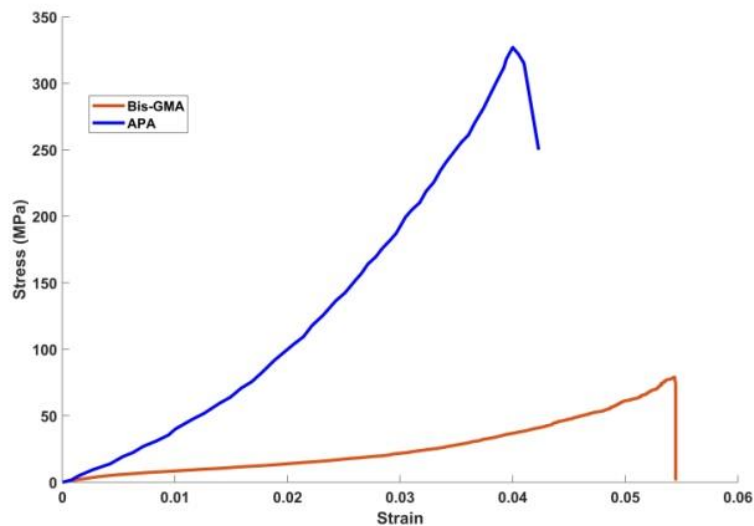


Fig.S2: Experimental stress-strain curves of isolated APA and pure Bis-GMA resin.

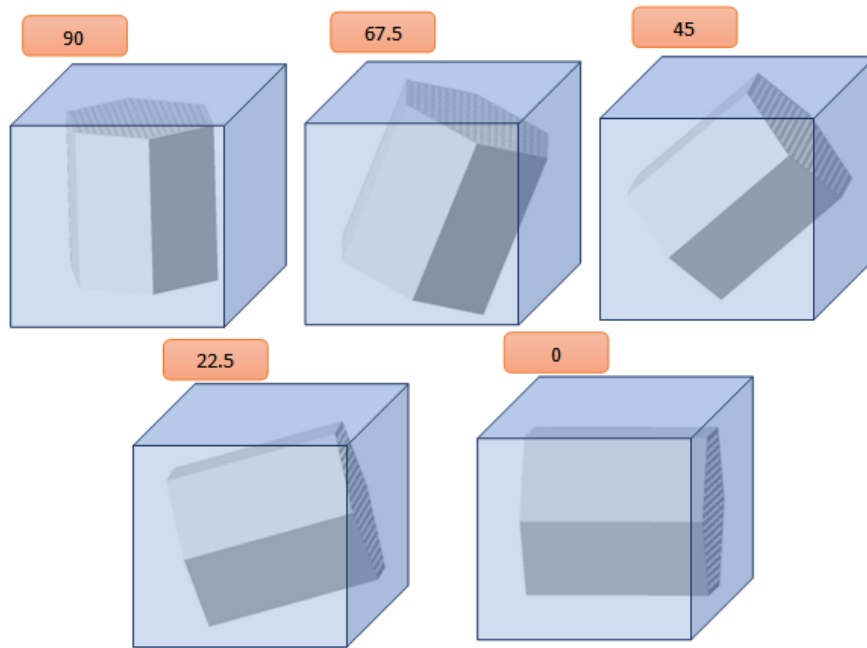


Fig.S3: Different APA filler orientations in the matrix, considered in this work (values in degrees of angle with respect to the horizontal axis are shown).