

Portland State University

PDXScholar

Counselor Education Faculty Publications and Presentations

Counselor Education

11-2023

Reduced Risk of Dementia in Patients with type 2 diabetes mellitus using Chinese herbal medicine: A nested case-control study

Hou-Hsun Liao

College of Chinese Medicine

Hanoch Livneh

Portland State University, livnehh@pdx.edu

Hua-Lung Huang

The Buddhist Tzuchi Medical Foundation, Chiayi, Taiwan

Jui-Yu Hung

The Buddhist Tzuchi Medical Foundation

Ming-Chi Lu

The Buddhist Tzuchi Medical Foundation

Follow this and additional works at: https://pdxscholar.library.pdx.edu/coun_fac



Part of the [Medicine and Health Sciences Commons](#)

Let us know how access to this document benefits you.

Citation Details

Citation: Liao HH, Livneh H, Huang HL, Hung JY, Lu MC, Guo HR, Tsai TY. Reduced risk of dementia in patients with type 2 diabetes mellitus using Chinese herbal medicine: A nested case-control study. *World J Diabetes* 2023; 14(11): 1632-1642 URL: <https://www.wjgnet.com/1948-9358/full/v14/i11/1632.htm>
DOI: <https://dx.doi.org/10.4239/wjd.v14.i11.1632>

This Article is brought to you for free and open access. It has been accepted for inclusion in Counselor Education Faculty Publications and Presentations by an authorized administrator of PDXScholar. Please contact us if we can make this document more accessible: pdxscholar@pdx.edu.

Authors

Hou-Hsun Liao, Hanoch Livneh, Hua-Lung Huang, Jui-Yu Hung, Ming-Chi Lu, How-Ran Guo, and Tzung-Yi Tsai

Observational Study

Reduced risk of dementia in patients with type 2 diabetes mellitus using Chinese herbal medicine: A nested case-control study

Hou-Hsun Liao, Hanoch Livneh, Hua-Lung Huang, Jui-Yu Hung, Ming-Chi Lu, How-Ran Guo, Tzung-Yi Tsai

Specialty type: Endocrinology and metabolism**Provenance and peer review:** Invited article; Externally peer reviewed.**Peer-review model:** Single blind**Peer-review report's scientific quality classification**Grade A (Excellent): 0
Grade B (Very good): 0
Grade C (Good): C, C, C, C
Grade D (Fair): 0
Grade E (Poor): 0**P-Reviewer:** Masaru T, Hungary; Nawab M, India; Horowitz M, Australia**Received:** August 4, 2023**Peer-review started:** August 4, 2023**First decision:** August 24, 2023**Revised:** September 14, 2023**Accepted:** October 25, 2023**Article in press:** October 25, 2023**Published online:** November 15, 2023**Hou-Hsun Liao**, Department of Chinese Medicine, Dalin Tzu Chi Hospital, Buddhist Tzu Chi Medical Foundation, Chiayi 62247, Taiwan**Hou-Hsun Liao**, Graduate Institute of Chinese Medicine, School of Chinese Medicine, College of Chinese Medicine, China Medical University, Taichung 404333, Taiwan**Hou-Hsun Liao, Tzung-Yi Tsai**, Department of Nursing, Tzu Chi University of Science and Technology, Hualien 62247, Taiwan**Hanoch Livneh**, Department of Special and Counselor Education, Portland State University, Portland, OR 97207, United States**Hua-Lung Huang**, Department of Rehabilitation, Dalin Tzu Chi Hospital, Buddhist Tzu Chi Medical Foundation, Chiayi 62247, Taiwan**Jui-Yu Hung**, Department of Nursing, Dalin Tzu Chi Hospital, Buddhist Tzu Chi Medical Foundation, Chiayi 62247, Taiwan**Ming-Chi Lu**, Division of Allergy, Immunology and Rheumatology, Dalin Tzu Chi Hospital, Buddhist Tzu Chi Medical Foundation, Chiayi 62247, Taiwan**How-Ran Guo**, Department of Environmental and Occupational Health, College of Medicine, National Cheng Kung University, Tainan 70428, Taiwan**How-Ran Guo**, Department of Occupational and Environmental Medicine, National Cheng Kung University Hospital, Tainan 70428, Taiwan**How-Ran Guo**, Occupational Safety, Health, and Medicine Research Center, National Cheng Kung University, Tainan 70428, Taiwan**Tzung-Yi Tsai**, Department of Medical Research, Dalin Tzu Chi Hospital, Buddhist Tzu Chi Medical Foundation, Chiayi 62247, Taiwan**Corresponding author:** Tzung-Yi Tsai, PhD, Assistant Professor, Researcher, Statistician, Department of Medical Research, Dalin Tzu Chi Hospital, Buddhist Tzu Chi Medical Foundation, No. 2 Minsheng Road, Chiayi 62247, Taiwan. dm732024@tzuchi.com.tw

Abstract

BACKGROUND

Dementia is a prevalent condition in type 2 diabetes mellitus (T2DM) patients. While Chinese herbal medicine (CHM) is often employed as complementary therapy for glycemic control, its effect in controlling likelihood of dementia has not yet been fully elucidated.

AIM

To compare the risk of dementia between T2DM patients with and without CHM treatment.

METHODS

We undertook a nested case-control study and obtained data on patients 20-70 years of age who received medical care for T2DM between 2001 and 2010 from the National Health Insurance Research database in Taiwan. Cases, defined as those with dementia that occurred at least one year after the diagnosis of T2DM, were randomly matched to controls without dementia from the study cohort at a 1:1 ratio. We applied conditional logistic regression to explore the associations between CHM treatment and dementia.

RESULTS

A total of 11699 dementia cases were matched to 11699 non-dementia controls. We found that adding CHM to conventional care was related to a lower risk of dementia [adjusted odds ratio (OR) = 0.51], and high-intensity CHM treatment was associated with an adjusted OR of 0.22.

CONCLUSION

This study shows that the cumulative CHM exposure was inversely associated with dementia risk in an exposure-response manner, implying that CHM treatment may be embraced as a disease management approach for diabetic patients to prevent dementia.

Key Words: Type 2 diabetes mellitus; Dementia; Chinese herbal medicine; Nested case-control study; Odds ratio

©The Author(s) 2023. Published by Baishideng Publishing Group Inc. All rights reserved.

Core Tip: This population-based nested case-control study is the first to determine if integrating Chinese herbal medicine (CHM) into routine care of type 2 diabetes mellitus (T2DM) could aid in the prevention of subsequent dementia chance. In this report, we found that adding CHM to conventional care may reduce the subsequent risk of dementia for T2DM patients by 49%. Identification of an exposure-response manner, negative correlation between the days of CHM use and risk of dementia herein may further support the therapeutic benefit of CHM.

Citation: Liao HH, Livneh H, Huang HL, Hung JY, Lu MC, Guo HR, Tsai TY. Reduced risk of dementia in patients with type 2 diabetes mellitus using Chinese herbal medicine: A nested case-control study. *World J Diabetes* 2023; 14(11): 1632-1642

URL: <https://www.wjgnet.com/1948-9358/full/v14/i11/1632.htm>

DOI: <https://dx.doi.org/10.4239/wjd.v14.i11.1632>

INTRODUCTION

Chronic illnesses are a leading cause of present-day morbidity and mortality, thereby thwarting the healthcare system worldwide. Taking diabetes as an example, a report from the Centers for Disease Control showed that nearly 40 million Americans had diabetes in 2019, and nearly 95% of whom have type 2 diabetes mellitus (T2DM)[1]. In such a case, the disease may profoundly affect patients, their families, and society at large. By one estimate, the annual medical expenditures per T2DM patient in the United States was \$16752 yearly, which was approximately 2.3 times higher than the average cost for a person without T2DM (\$7151)[2]. The total national costs imposed by diabetes were expected to rise as well, from \$322 billion in 2012 to \$404 billion in 2017, an increase of 25% over the past several years[3].

Although recent medical innovations have greatly improved the prognosis of T2DM, its impact is still challenging for the survivors, especially regarding onset of dementia, which may cause serious long-term health problems. Unfortunately, dementia is a silent illness and thus affected persons may be unaware of their cognitive impairment. An earlier meta-analysis of 29 prospective observational studies reported a risk for all-cause dementia among T2DM patients as high as 73%[4]. Notably, T2DM patients experience twice the risk of dying after experiencing comorbid dementia[5,6]. Recent studies have presumed a link between T2DM and dementia that may include systemic insulin resistance and increased levels of circulating pro-inflammatory markers, both of which would lead to defects in insulin signaling pathway and changes in brain synaptic plasticity, thereby inciting chance of dementia[7]. Given the prominence of dementia in the patients with T2DM[5], it is critical to attenuate the likelihood of dementia while managing people with T2DM.

Today, Chinese herbal medicine (CHM) is often employed in treating a broad range of health conditions. Several active CHM ingredients were established to introduce favorable prognoses among patients with inflammatory conditions *via*

the regulation of specific circulating cytokines[8]. For example, Du-Huo-Ji-Sheng-Tang, one of CHM formulae used for bone diseases treatment clinically, has been proven to suppress the expression of cytokines by abating nuclear factor kappa beta (NF- κ B) signaling[9], as well as inhibit several inflammatory mediators known to be involved in the pathogenesis of neurodegenerative illnesses[10,11]. In view of a growing body of evidence manifesting that abnormal inflammatory responses may be involved in the pathogenesis of T2DM and dementia[7,12], CHM may be a useful approach to prevent or delay onset of dementia among such groups.

After a thorough literature review, we found no studies that reported data on the association of CHM use with the probable subsequent dementia among T2DM patients. Accordingly, we carried out a nested case-control study based on a nationwide claims database to clarify this issue. Data from such a study would provide valuable information on the compatibility and clinical application of CHM, enabling healthcare providers to institute a more appropriate treatment for T2DM patients.

MATERIALS AND METHODS

Study design and data source

This nested case-control study was conducted using patient records from a national claim data held by the Bureau of National Health Insurance (NHI) in Taiwan[13]. As participation in this insurance is compulsory, more than 99% of the healthcare providers have contracted with NHI so far. The implementation of national insurance program would enable the residents to access the cost-effective and quality health care[13]. All analytical data were obtained from the Longitudinal Health Insurance Database between 2000 and 2013, which included the original claims data of 1 million insureds randomly extracted from all beneficiaries under the NHI program. This database holds the information on demographics, diagnoses, prescriptions, referrals, hospitalization for these patients covered by the NHI program. This work has been approved by the facility's institutional review board (No. B10004021-3). The institutional review board also waived the need for informed consent since the raw data used was on the basis of a retrospective claims data with encrypted attribution.

Underlying cohort establishment

Medical diagnoses and procedures in this claims database were recorded with the International Classification of Diseases, 9th Revision, Clinical Modification (ICD-9-CM). In accordance with the earlier rule[14,15], the present study recruited patients 20-70 years of age with T2DM who had at least three outpatient or a single inpatient claim with the ICD-9-CM code 250 between 2001 and 2010. Considering the temporal relationship for casual inference, we excluded patients with T2DM who had been diagnosed with dementia before or within 1 year after the onset of T2DM. Consequently, cases of this study had their first diagnosis of dementia during 2002-2013. Additionally, the primary outcome, namely incident dementia, was defined as having the first diagnosis of dementia (ICD-9-CM codes of 290, 294 and 331). To ensure the validity, only those diagnosed with dementia who had at least three outpatient service claims within one year, or at least 1 inpatient hospitalization claim were selected[16]. Date of when first dementia occurred was deemed the index date. We also employed one-year washout period to exclude the cases if they had any medical visits of dementia before T2DM ($n = 30520$), as well as those who had missing values or were followed up for less than one year after cohort entry ($n = 2567$); in sum, a total of 31219 new-onset T2DM patients were included.

Ascertainment of case and control groups

Among the recruited patients with T2DM, 17241 (55.2%) developed dementia before the end of 2013. Each case with dementia was randomly matched to one control who was not diagnosed with dementia, determined by age (within 2 years), sex, and comorbidities. Each member from the control group was assigned the same index date as the corresponding case with dementia, thus keeping a comparable probability of dementia onset during the follow-up period for each group. The flowchart of the study participants' selection is summarized in [Figure 1](#).

Assessment of CHM exposure

Firstly, to identify individual exposure of CHM treatment, we reviewed the overall treatment records that occurred from cohort entry to index date. Based on former criteria[17,18], those receiving CHM treatment for more than 30 d due to T2DM were considered CHM users, whereas those who only seek healthcare from Western medical doctors were deemed non-CHM users. All participants were further classified into four groups, non-CHM use (< 31 d), low-intensity use of CHM (31-365 d), medium-intensity use of CHM (366-730 d), and high-intensity use of CHM (731 d or more) based on their cumulative days of CHM prescriptions. This approach would allow us to carefully determine the exposure-response effect of CHM in preventing dementia.

Information regarding covariates

Covariates in the statistical analysis included age, sex, monthly income, prior comorbidities, and urbanization of individual residential area. With regard to monthly income, we utilized the NHI premium payment as a proxy and transformed this indicator into a 3-level ordinal variable as follows: USD \leq 623, 624-1394, and \geq 1395[19]. Furthermore, the urbanization degree was classified into three types of settlements based on a previous study, which comprised cities, towns and semi-dense areas, and rural areas[20]. Baseline comorbidities were identified as occurring within one year preceding T2DM onset, and all of them were calculated by the established Charlson-Deyo comorbidity index (CCI)[21].

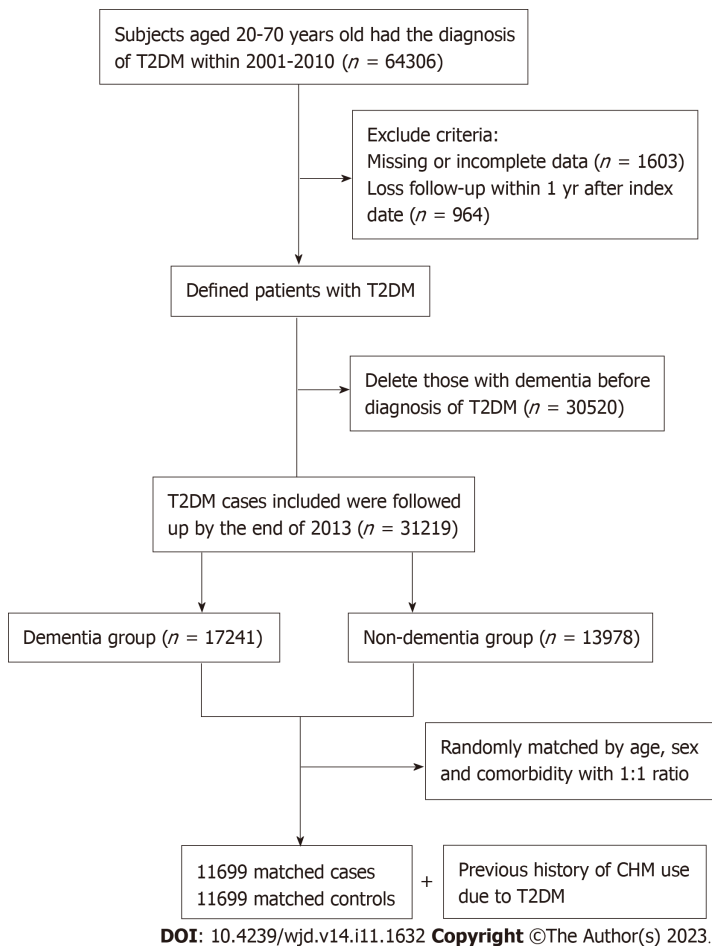


Figure 1 Flowchart of patient screening. T2DM: Type 2 diabetes mellitus; CHM: Chinese herbal medicine.

The Deyo-adapted CCI incorporates 17 diseases, each which is rated on the scale of 1-6, with higher total scores indicating more severe burden due to comorbidities.

Analysis

In all comparisons, a P value < 0.05 was considered statistically significant. About the descriptive statistics, we reported continuous variables using mean \pm SD, and categorical variables using frequency and percentage. The χ^2 test was used to determine differences in percentages of categorical variables, and student's t -test was adopted to evaluate differences in the means between two groups. Univariate and multivariate conditional logistic regressions were then applied to estimate odds ratio (OR) with 95% confidence intervals (CI) for association between CHM usage and sequent dementia. Subgroup analysis stratified by sex and age was performed as well. Sensitivity analysis, after excluding medical comorbidities, was conducted to determine the independent effect of CHM exposure on subsequent dementia risk. All of the analyses were carried out using SAS Version 9.3 for Windows (SAS Institute Inc., Cary, NC, United States).

RESULTS

A total of 11699 matched pairs of T2DM patients with and without dementia were identified from the cohort dataset. Male patients dominated the number of studied cases and matched controls. Mean age for the total sample was 51.6 years, with a mean follow-up period of 5.8 years. Also, nearly sixty percent of the participants were at the middle income level and lived in cities. No significant baseline differences in terms of demographic data or comorbidities between two groups were detected. Details of the relevant variables at baseline were shown in [Table 1](#).

During the study period, 22.6% of the cases and 35.6% of the controls had a history of CHM use. In the multivariate analyses of CHM use and dementia risk, we observed that those who had a history of CHM use exhibited a 49% reduced risk of dementia, in comparison to those who never used CHM (adjusted OR = 0.51; 95%CI: 0.48-0.53). Furthermore, those with high-intensity CHM treatment appear to have benefitted by attenuation of likelihood of dementia, which implied an exposure-res-ponse inverse association between duration of CHM use and dementia risk ([Table 2](#)). This exposure-response association still persisted following stratification by sex and age ([Table 3](#)). After excluding medical comorbidities as covariates, the sensitivity analysis revealed CHM usage was still tied to a lower risk of dementia, with an adjusted OR of 0.59 (95%CI: 0.51-0.69). [Figure 2](#) displays the top-ten most commonly prescribed single-herb and multi-herb

Table 1 Demographic data and selected comorbidities of the two study groups

Variables	Number (%)	Cases		Controls		P value
		n = 11699 (%)		n = 11699 (%)		
Age (yr)						0.07
20-40	2307 (9.9)	1139 (9.7)	1168 (10.0)			
41-60	16457 (70.3)	8174 (69.9)	8283 (70.8)			
61-70	4634 (19.8)	2386 (20.4)	2248 (19.2)			
mean ± SD	51.6 ± 7.3	51.5 ± 7.2	51.6 ± 7.3			0.34
Duration of follow-up, yr (SD)	5.8 (3.4)	6.4 (3.2)	5.5 (3.4)			
Sex						0.99
Female	11243 (48.1)	5622 (48.1)	5621 (48.0)			
Male	12155 (51.9)	6077 (51.9)	6078 (52.0)			
Monthly income						0.15
Low	8561 (36.5)	4290 (36.7)	4271 (36.5)			
Median	13116 (56.1)	6587 (56.3)	6529 (55.8)			
High	1721 (7.4)	822 (7.0)	899 (7.7)			
Residential area						0.19
Urban	14005 (59.8)	6939 (59.3)	7066 (60.4)			
Suburban	3718 (15.9)	1869 (16.0)	1849 (15.8)			
Rural	5675 (24.3)	2891 (24.7)	2784 (23.8)			
CCI	4.3 (5.7)	4.3 (5.8)	4.3 (5.6)			0.68

SD: Standard deviation; CCI: Charlson-Deyo comorbidity index.

Table 2 The association between dementia onset and use of Chinese herbal medicine among type 2 diabetes mellitus patients

CHM exposure	Patients				Crude OR (95%CI)	Adjusted OR ¹ (95%CI)
	Cases, n = 11699		Controls, n = 11699			
Non-CHM users	9053	77.4	7533	64.4	¹	¹
CHM users	2646	22.6	4166	35.6	0.53 (0.50-0.56)	0.51 (0.48-0.53)
Low intensity (31-365 d)	2350	20.1	3366	28.8	0.58 (0.55-0.62)	0.57 (0.53-0.60)
Medium intensity (366-730 d)	206	1.8	482	4.1	0.35 (0.30-0.42)	0.33 (0.28-0.39)
High intensity (731 d or more)	90	0.8	318	2.7	0.24 (0.19-0.30)	0.22 (0.17-0.28)

¹Adjusted for potential confounders that contained age, residential area, monthly income and Charlson-Deyo comorbidity index.

CHM: Chinese herbal medicine; OR: odds ratio; CI: Confidence interval.

formulae for the treatment of T2DM, along with their associated OR. Uses of certain CHM products appeared to be correlated with a lower risk of dementia, which included Da-Huang, Hai-Piao-Xiao, Dan-Shen, Ge-Gen, Ye-Jiao-Teng, Bei-Mu, Chuan-Qi, Jia-Wei-Xiao-Yao-San (JWXYs), Ge-Gen-Tang (GGT), Shao-Yao-Gan-Cao-Tang (SYGCT), and Gan-Lu-Yin (GLY).

DISCUSSION

There is accumulating evidence manifesting that T2DM may elevate the risk of cognitive impairment, including dementia, due to the shared pathogenesis between the two diseases[7,12]. With no prophylactic options for dementia currently available for T2DM patients, CHM may provide a promising approach on the basis of suggestions drawn from

Table 3 Risk of dementia among type 2 diabetes mellitus patients with and without exposure to Chinese herbal medicine use stratified by sex and age

Variables	Patients, n (%)	Crude OR (95%CI)	Adjusted OR (95%CI)
Female			
Non-CHM users	4140 (73.6)	1	1
CHM users	1482 (26.4)	0.51 (0.47-0.55)	0.49 (0.45-0.53) ¹
Male			
Non-CHM users	4913 (80.8)	1	1
CHM users	1164 (19.2)	0.54 (0.50-0.59)	0.53 (0.48-0.57) ¹
Aged 20-40 yr			
Non-CHM users	1011 (77.6)	1	1
CHM users	291 (22.4)	0.46 (0.39-0.55)	0.45 (0.37-0.54) ²
Aged 41-60 yr			
Non-CHM users	6487 (77.2)	1	1
CHM users	1921 (22.8)	0.53 (0.49-0.57)	0.51 (0.48-0.55) ²
Aged 61-70 yr			
Non-CHM users	1555 (78.2)	1	1
CHM users	434 (21.8)	0.54 (0.47-0.61)	0.53 (0.46-0.60) ²

¹Adjusted for the age, residential area, monthly income and Charlson-Deyo comorbidity index.

²Adjusted for the sex, residential area, monthly income and Charlson-Deyo comorbidity index.

CHM: Chinese herbal medicine; OR: Odds ratio; CI: Confidence interval.

earlier research[8,9].

As of now, no study has been conducted to explore the long-term effect of CHM on the prevention of dementia among T2DM patients. The multi-variate regression in this study showed that receiving CHM in addition to conventional treatment was associated a 49% reduction in the risk of dementia (OR = 0.51), as compared to those without the use of CHM. Longer duration of CHM treatment was found to be associated with greater reduction in dementia risk, independent of gender and age. Specifically, receiving CHM treatment for more than two years was associated a 78% reduction in the risk of dementia (OR = 0.22). Despite a lack of comparable studies, the observed beneficial impact of CHM in preventing cognitive decline may contribute to a growing body of evidence indicating the clinical efficacy of CHM among individuals with chronic diseases[22,23]. We postulate that some herbal products may provide effective synaptic concentrations of monoamines for modulating hippocampal neurogenesis[24], hence supporting the positive impact of CHM shown in this research. For example, we found that usage of Hai-Piao-Xiao was associated with a reduced the risk of dementia, echoing an earlier study showing that this herb possessed a neuroprotective properties[25]. Another study described that extracts of Hai-Piao-Xiao slowed down lipid oxidation by chelating ferrous ions[26]. It is well known that oxidative stress is not only involved in the development of T2DM, but also in cognitive impairment[27]. Additionally, the elevated oxidative stress gradually triggered the release of neuroinflammatory cytokines and deposition of amyloid- β -peptide (A β), thus provoking development of dementia[4]. The prescriptions of Dan-Shen and Ge-Gen were associated with a decreased risk of dementia herein. Some animal models found that these two remedies could possibly elicit neurotherapeutic effects by inhibiting A β production and accumulation, thus decreasing the expression of proinflammatory cytokines[28,29].

We found those who received Ye-Jiao-Teng or Chuan-Qi experienced a nearly 50% lower risk of dementia compared to controls. An earlier murine model portrayed that the root of Ye-Jiao-Teng could downregulate nitric oxide and pro-inflammatory cytokines, such as tumor necrosis factor- α and interleukin (IL)-6, by abating NF- κ B signaling[30]; both of these products had been implicated in triggering episodes of neurodegeneration. As for Chuan-Qi, recent pharmacological studies argued that the main component of this herbal formula has beneficial impact on the cardiovascular system through inhibition of pro-inflammatory mediators, such as IL-6 and matrix metalloproteinase-3[31,32]. These parameters are known to trigger cognitive dysfunction and decline[10].

Our findings also suggest that Bei-Mu and Da-Huang reduce the risk of dementia in T2DM patients. Emodin, an extract from Da-Huang, has been noted *in vitro* and *in vivo* to exert anti-inflammatory effect through restraining the NF- κ B and p38MAPK pathways[33], which play key roles in regulating inflammatory cytokines and cellular reactions to stress[12]. Moreover, the effect of emodin on brain-derived neurotrophic factor (BDNF) could be responsible for its neuroprotective effects. Beneficial impact of emodin on neurological disorders may be related to the activation of intracellular signaling pathways, such as BDNF/tropomyosin receptor kinase B signaling[34].

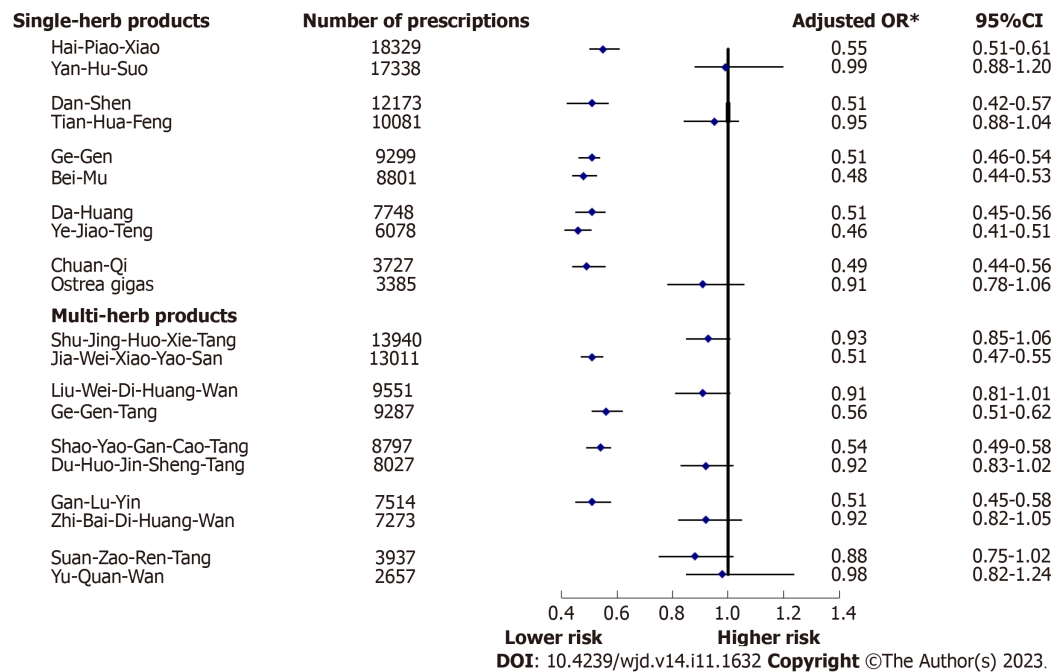


Figure 2 Risk of dementia in relation to the ten commonly used single-herb and multi-herb products for subjects. OR: Odds ratio; CI: Confidence interval.

Of the commonly used multi-herb products to treat T2DM, we noticed that the prescriptions of SYGCT and JWXYS were correlated with reduction of dementia risk. One recent report posited that SYGCT might regulate the inflammatory state in a murine model by lessening the activation of Toll-like receptor 4/NF-κB signaling pathway[35]. The suppression of this pathway has been proven to inhibit Aβ-induced oxidative stress and inflammation[36], thus modifying risk of mitochondrial abnormalities[37]. JWXYS is often prescribed to relieve emotional and neuropsychological disorders in clinical practice, and its pharmacologic benefits in preventing dementia have been explored in animal studies. For example, Shen *et al*[38] noted that *Angelica sinensis*, a major compound in JWXYS, may enhance synaptic plasticity and upregulate the expression of hippocampal BDNF in depressed rats, induced by mild, chronic, and unpredictable stress. This herb can also inhibit abnormal tau phosphorylation, regulate the release of Aβ peptides, and decrease Aβ-induced neurotoxicity[39,40]. These underlying mechanisms may account for the positive impact of JWXYS found herein.

We also identified the benefit of GLY in reducing the subsequent predisposition to dementia among T2DM patients. As a classic CHM, GLY has been proven to exert the anti-inflammatory effect through the NF-κB dependent pathway[41]. Furthermore, *in vivo* research has shown that pretreatment of high glucose-stimulated cultured human umbilical vein endothelial cells with baicalin and baicalein, two flavonoids derived from GLY, remarkably inhibited glucose-induced inflammatory responses that mediate vascular permeability and production of reactive oxygen species (ROS)[42]. Activation of ROS may cause neuroinflammation that incites the Aβ generation[43]. We also noticed the positive effect of GGT in reducing dementia. Former evidence has shown that mice fed with GGT had profoundly lower levels of inflammatory-induced cytokines, as compared to untreated controls. Its anti-inflammatory effect may be correlated with down-regulation of NF-κB/p65 activation and the inhibition of NF-κB activity[44].

Despite being a pioneer study in exploring the effect of CHM on the risk of developing dementia in T2DM patients, this study should be considered in the context of several limitations. First, data used in this work were extracted from a claims-based database; accordingly, the information regarding biochemical data, family history, lifestyle behaviors, and body weight were not available. Thus, residual confounding by these factors might exist to partly bias the association herein. A larger cohort of T2DM patients created by prospective randomized trials, therefore, should be employed to further explore the potential mechanisms underlying the clinical benefits of CHM in preventing cognitive impairment. Second, participants in this study were assigned a diagnosis based on the ICD-9-CM coding only, which may carry a risk of inaccurate indication of true disease status. Thus, misclassification is possible. To deal with this issue, we recruited only those patients with either dementia or T2DM after they were recorded as having at least three outpatient claims or one inpatient record that indicated consistent diagnoses. It should also be acknowledged that the probability of exposure being misclassified was independent of disease status, and the probability of disease status being misclassified was independent of exposure status, which in turn may lead to an underestimate (dilution) of the true strength of an association between exposure and disease[45]. Third, information on T2DM severity was not available from the database, and failure to consider this factor might affect the veracity of the findings. As a result, we performed a sensitivity analysis in which we included the T2DM patients with no comorbidities only. This analysis indicated that those receiving CHM therapy still experienced a lower risk of dementia than the controls by 40%, which implied that the observed results were unlikely to be influenced by disease severity. Notwithstanding these limitations, this work is reflective of a population-based investigation that evaluates the association of CHM use with dementia risk among T2DM patients *via* a nationwide health claims program, thus leaving little room for non-response or loss to follow-up. Another strength of this work is the

long observation period. Facing with dementia being a major contributor to disability and the need for care, we had the advantages coming with the over 10-year observation period and the large sample size, which contributed to a better understanding of the link among diabetes, dementia and the benefits of CHM. Lastly, the nested case-control approach used is a rival alternative to a cohort analysis when studying time-varying exposure, such as patterns of drugs or treatments. Hence, the evidence from our study, using real-world health claims, may be comparable to findings derived from medical research using randomized controlled trials.

CONCLUSION

This population-based nested case-control study found that during conventional treatment for T2DM, the integration of CHM was associated with a reduction in the risk of dementia by 49%. Moreover, the duration of CHM use had an inverse exposure-response association with the risk of dementia among T2DM patients. These findings suggested that a complementary therapy, specifically CHM, may contribute to the disease management of cognitive decline. Not only that, the results of our study further identified certain commonly prescribed herbal products that might be likely to lower dementia risk, hence paving the way for further pharmacological research to cure and control other health maladies. As far as clinical practice is concerned, we recommend that clinicians and people living with diabetes be aware of the increased risk of developing dementia and be vigilant in watching for early symptoms of this disease, so that appropriate diagnostic tests along with provable treatments could be administered when early symptoms of these conditions become observable.

ARTICLE HIGHLIGHTS

Research background

Over the last several years, patients afflicted with type 2 diabetes mellitus (T2DM) were found to have a nearly double likelihood of having dementia as compared to those without T2DM, which may take a critical toll on their health conditions.

Research motivation

Though the widespread use of Chinese herbal medicine (CHM) in the diabetic patients, to the knowledge of the authors, no population-level study has so far been done to assess if CHM use could be a potential disease management program in lowering risk of dementia among patients with T2DM.

Research objectives

To address this issue, a nested case-control study, aimed to compare dementia risk in T2DM patients with and without the use of CHM, was undertaken.

Research methods

Using a nationwide health insurance database, we identified incident patients diagnosed with T2DM between 2001 and 2010. Among them, each case, defined as who suffered from dementia occurring at least one year after T2DM onset, was randomly matched to one control without dementia. Relationship between CHM use and the risk of dementia was estimated by end of 2013 and evaluated using conditional logistic regression.

Research results

A total of 11699 dementia patients 20-70 years of age, were matched to 11699 non-dementia controls. Among them, use of CHM was correlated to a lower dementia risk (adjusted odds ratio = 0.51, 95% confidence interval: 0.48-0.53). Notably, those receiving high-intensity use of CHM had a 78% reduced the risk of dementia.

Research conclusions

Findings of this study indicated that add-on CHM formulae as part of T2DM care may be a potential treatment in preventing incident dementia.

Research perspectives

A large cohort of diabetic patients created by randomized trials are warranted to further explore the potential mechanisms underlying the clinical benefits of CHM on prevention of cognitive impairment.

ACKNOWLEDGEMENTS

This study obtained data from the National Health Insurance Research Database provided by the Bureau of National Health Insurance, managed by the Department of Health and Welfare, Taiwan. The main mission of the authority is to

ensure the universal participation and equal opportunity of medical care. The interpretation and conclusions contained herein do not represent those of the Bureau of National Health Insurance, Department of Health, or National Health Research Institutes.

FOOTNOTES

Co-corresponding authors: How-Ran Guo and Tzung-Yi Tsai.

Author contributions: Liao HH, Livneh H, and Huang HL contributed equally to this work. Liao HH, Livneh H, and Huang HL were involved in the study design and drafted the manuscript; Livneh H, Lu MC and Tsai TY contributed to data analysis and revised the manuscript; Liao HH, Livneh H, and Hung JY contributed to the interpretation of data and provided comments on the final draft of the manuscript; Lu MC provided administrative support; Guo HR and Tsai TY were not only involved in design and conduct of the study, but also contributed to the software and validation of data; and all authors gave final approval of the version to be published, and agree to be accountable for all aspects of the work.

Institutional review board statement: This work has been approved by the facility's institutional review board (No. B10004021-3).

Informed consent statement: The institutional review board waived the need for informed consent since the raw data used were on the basis of a retrospective claims data with encrypted attribution.

Conflict-of-interest statement: All the authors report no relevant conflicts of interest for this article.

Data sharing statement: The data that support the findings of this study are available from the corresponding author upon reasonable request.

STROBE statement: The authors have read the STROBE Statement-checklist of items, and the manuscript was prepared and revised according to the STROBE Statement-checklist of items.

Open-Access: This article is an open-access article that was selected by an in-house editor and fully peer-reviewed by external reviewers. It is distributed in accordance with the Creative Commons Attribution NonCommercial (CC BY-NC 4.0) license, which permits others to distribute, remix, adapt, build upon this work non-commercially, and license their derivative works on different terms, provided the original work is properly cited and the use is non-commercial. See: <https://creativecommons.org/licenses/by-nc/4.0/>

Country/Territory of origin: Taiwan

ORCID number: Hanoch Livneh 0000-0001-5149-1717; Ming-Chi Lu 0000-0001-9051-0351; How-Ran Guo 0000-0003-3343-3446; Tzung-Yi Tsai 0000-0002-9865-7101.

S-Editor: Wang JJ

L-Editor: A

P-Editor: Wang JJ

REFERENCES

- 1 **Centers for Disease Control and Prevention.** National Diabetes Statistics Report. [cited 15 June 2023]. Available from: <https://www.cdc.gov/diabetes/data/statistics-report/index.html>
- 2 **American Diabetes Association.** Economic Costs of Diabetes in the U.S. in 2017. *Diabetes Care* 2018; **41**: 917-928 [PMID: 29567642 DOI: 10.2337/dci18-0007]
- 3 **Dall TM,** Yang W, Gillespie K, Mocarski M, Byrne E, Cintina I, Beronja K, Semilla AP, Iacobucci W, Hogan PF. The Economic Burden of Elevated Blood Glucose Levels in 2017: Diagnosed and Undiagnosed Diabetes, Gestational Diabetes Mellitus, and Prediabetes. *Diabetes Care* 2019; **42**: 1661-1668 [PMID: 30940641 DOI: 10.2337/dc18-1226]
- 4 **Gudala K,** Bansal D, Schifano F, Bhansali A. Diabetes mellitus and risk of dementia: A meta-analysis of prospective observational studies. *J Diabetes Investig* 2013; **4**: 640-650 [PMID: 24843720 DOI: 10.1111/jdi.12087]
- 5 **Reinke C,** Buchmann N, Fink A, Tegeler C, Demuth I, Doblhammer G. Diabetes duration and the risk of dementia: a cohort study based on German health claims data. *Age Ageing* 2022; **51** [PMID: 34923587 DOI: 10.1093/ageing/afab231]
- 6 **Han E,** Han KD, Lee BW, Kang ES, Cha BS, Ko SH, Lee YH. Severe Hypoglycemia Increases Dementia Risk and Related Mortality: A Nationwide, Population-based Cohort Study. *J Clin Endocrinol Metab* 2022; **107**: e1976-e1986 [PMID: 35015886 DOI: 10.1210/clinem/dgab860]
- 7 **Cholerton B,** Baker LD, Montine TJ, Craft S. Type 2 Diabetes, Cognition, and Dementia in Older Adults: Toward a Precision Health Approach. *Diabetes Spectr* 2016; **29**: 210-219 [PMID: 27899872 DOI: 10.2337/ds16-0041]
- 8 **Tsai WH,** Yang CC, Li PC, Chen WC, Chien CT. Therapeutic potential of traditional chinese medicine on inflammatory diseases. *J Tradit Complement Med* 2013; **3**: 142-151 [PMID: 24716170 DOI: 10.4103/2225-4110.114898]
- 9 **Wang N,** Liu Y, Jia C, Gao C, Zheng T, Wu M, Zhang Q, Zhao X, Li Z, Chen J, Wu C. Machine learning enables discovery of Gentianine targeting TLR4/NF-κB pathway to repair ischemic stroke injury. *Pharmacol Res* 2021; **173**: 105913 [PMID: 34563661 DOI: 10.1016/j.phrs.2021.105913]

- 10 **Babić Leko M**, Nikolac Perković M, Klepac N, Štrac DŠ, Borovečki F, Pivac N, Hof PR, Šimić G. IL-1 β , IL-6, IL-10, and TNF α Single Nucleotide Polymorphisms in Human Influence the Susceptibility to Alzheimer's Disease Pathology. *J Alzheimers Dis* 2020; **75**: 1029-1047 [PMID: 32390629 DOI: 10.3233/JAD-200056]
- 11 **Kim JW**, Stewart R, Kang HJ, Bae KY, Kim SW, Shin IS, Yoon JS, Kim JM. Longitudinal Associations Between Serum Cytokine Levels and Dementia. *Front Psychiatry* 2018; **9**: 606 [PMID: 30510525 DOI: 10.3389/fpsy.2018.00606]
- 12 **Saedi E**, Gheini MR, Faiz F, Arami MA. Diabetes mellitus and cognitive impairments. *World J Diabetes* 2016; **7**: 412-422 [PMID: 27660698 DOI: 10.4239/wjd.v7.i17.412]
- 13 National Health Insurance Research Database. [cited 15 June 2023]. Available from: <https://nhird.nhri.edu.tw/en/index.html>
- 14 **Lee YH**, Kung PT, Kuo WY, Kao SL, Tsai WC. The effect of pay for performance on risk incidence of hip fracture in type 2 diabetic patients: a nationwide population-based cohort study. *Medicine (Baltimore)* 2020; **99**: e19592 [PMID: 32195973 DOI: 10.1097/MD.00000000000019592]
- 15 **Huang CC**, Weng SF, Tsai KT, Chen PJ, Lin HJ, Wang JJ, Su SB, Chou W, Guo HR, Hsu CC. Long-term Mortality Risk After Hyperglycemic Crisis Episodes in Geriatric Patients With Diabetes: A National Population-Based Cohort Study. *Diabetes Care* 2015; **38**: 746-751 [PMID: 25665811 DOI: 10.2337/dc14-1840]
- 16 **Lu MC**, Livneh H, Yen CT, Huang HL, Lin MC, Yen SW, Lai NS, Tsai TY. Association of Use of Rehabilitation Services With Development of Dementia Among Patients With Rheumatoid Arthritis: Analysis of Domestic Data in Taiwan. *Front Med (Lausanne)* 2020; **7**: 446 [PMID: 32923448 DOI: 10.3389/fmed.2020.00446]
- 17 **Chung YJ**, Wei CK, Livneh H, Lai NS, Lu MC, Liao HH, Tsai TY. Relationship between the use of Chinese herbal medicines and Sjögren syndrome risk among women with menopause: a retrospective cohort study. *Menopause* 2020; **28**: 58-64 [PMID: 32881834 DOI: 10.1097/GME.0000000000001640]
- 18 **Jhang JS**, Livneh H, Yang SY, Huang HJ, Chan MWY, Lu MC, Yeh CC, Tsai TY. Decreased risk of colorectal cancer among patients with type 2 diabetes receiving Chinese herbal medicine: a population-based cohort study. *BMJ Open Diabetes Res Care* 2020; **8** [PMID: 32169932 DOI: 10.1136/bmjdr-2019-000732]
- 19 **Chen CC**, Chiang CY, Pan SC, Wang JY, Lin HH. Health system delay among patients with tuberculosis in Taiwan: 2003-2010. *BMC Infect Dis* 2015; **15**: 491 [PMID: 26527404 DOI: 10.1186/s12879-015-1228-x]
- 20 **Chang YT**, Chen TJ, Liu PC, Chen YC, Chen YJ, Huang YL, Jih JS, Chen CC, Lee DD, Wang WJ, Lin MW, Liu HN. Epidemiological study of psoriasis in the national health insurance database in Taiwan. *Acta Derm Venereol* 2009; **89**: 262-266 [PMID: 19479122 DOI: 10.2340/00015555-0642]
- 21 **Deyo RA**, Cherkin DC, Ciol MA. Adapting a clinical comorbidity index for use with ICD-9-CM administrative databases. *J Clin Epidemiol* 1992; **45**: 613-619 [PMID: 1607900 DOI: 10.1016/0895-4356(92)90133-8]
- 22 **Chen KH**, Yeh MH, Livneh H, Chen BC, Lin IH, Lu MC, Tsai TY, Yeh CC. Association of traditional Chinese medicine therapy and the risk of dementia in patients with hypertension: a nationwide population-based cohort study. *BMC Complement Altern Med* 2017; **17**: 178 [PMID: 28356117 DOI: 10.1186/s12906-017-1677-4]
- 23 **Starowicz M**, Zieliński H. Inhibition of Advanced Glycation End-Product Formation by High Antioxidant-Leveled Spices Commonly Used in European Cuisine. *Antioxidants (Basel)* 2019; **8** [PMID: 30991695 DOI: 10.3390/antiox8040100]
- 24 **Wang YS**, Shen CY, Jiang JG. Antidepressant active ingredients from herbs and nutraceuticals used in TCM: pharmacological mechanisms and prospects for drug discovery. *Pharmacol Res* 2019; **150**: 104520 [PMID: 31706012 DOI: 10.1016/j.phrs.2019.104520]
- 25 **Lin SK**, Tsai YT, Lai JN, Wu CT. Demographic and medication characteristics of traditional Chinese medicine users among dementia patients in Taiwan: a nationwide database study. *J Ethnopharmacol* 2015; **161**: 108-115 [PMID: 25527314 DOI: 10.1016/j.jep.2014.12.015]
- 26 **Vino AB**, Ramasamy P, Shanmugam V, Shanmugam A. Extraction, characterization and in vitro antioxidative potential of chitosan and sulfated chitosan from cuttlebone of sepia aculeata orbigny, 1848. *Asian Pac J Trop Biomed* 2012; **2**: S334-S341 [DOI: 10.1016/S2221-1691(12)60184-1]
- 27 **Kong Y**, Wang F, Wang J, Liu C, Zhou Y, Xu Z, Zhang C, Sun B, Guan Y. Pathological Mechanisms Linking Diabetes Mellitus and Alzheimer's Disease: the Receptor for Advanced Glycation End Products (RAGE). *Front Aging Neurosci* 2020; **12**: 217 [PMID: 32774301 DOI: 10.3389/fnagi.2020.00217]
- 28 **Anukulthanakorn K**, Parhar IS, Jaroenporn S, Kitahashi T, Watanbe G, Malaijvitnond S. Neurotherapeutic Effects of Pueraria mirifica Extract in Early- and Late-Stage Cognitive Impaired Rats. *Phytother Res* 2016; **30**: 929-939 [PMID: 26915634 DOI: 10.1002/ptr.5595]
- 29 **Lopresti AL**. Salvia (Sage): A Review of its Potential Cognitive-Enhancing and Protective Effects. *Drugs R D* 2017; **17**: 53-64 [PMID: 27888449 DOI: 10.1007/s40268-016-0157-5]
- 30 **Abad MJ**, Bermejo P, Alvarez M, Guerra JA, Silván AM, Villar AM. Flavonoids and a sesquiterpene lactone from Tanacetum microphyllum inhibit anti-inflammatory mediators in LPS-stimulated mouse peritoneal macrophages. *Planta Med* 2004; **70**: 34-38 [PMID: 14765290 DOI: 10.1055/s-2004-815452]
- 31 **Wan JB**, Lee SM, Wang JD, Wang N, He CW, Wang YT, Kang JX. Panax notoginseng reduces atherosclerotic lesions in ApoE-deficient mice and inhibits TNF-alpha-induced endothelial adhesion molecule expression and monocyte adhesion. *J Agric Food Chem* 2009; **57**: 6692-6697 [PMID: 19722574 DOI: 10.1021/jf900529w]
- 32 **Ling S**, Nheu L, Dai A, Guo Z, Komesaroff P. Effects of four medicinal herbs on human vascular endothelial cells in culture. *Int J Cardiol* 2008; **128**: 350-358 [PMID: 17692965 DOI: 10.1016/j.ijcard.2007.05.111]
- 33 Erratum for the Research Article: "Circulating tumor DNA methylation profiles enable early diagnosis, prognosis prediction, and screening for colorectal cancer" by H. Luo, Q. Zhao, W. Wei, L. Zheng, S. Yi, G. Li, W. Wang, H. Sheng, H. Pu, H. Mo, Z. Zuo, Z. Liu, C. Li, C. Xie, Z. Zeng, W. Li, X. Hao, Y. Liu, S. Cao, W. Liu, S. Gibson, K. Zhang, G. Xu, R.-h. Xu. *Sci Transl Med* 2020; **12** [PMID: 32321865 DOI: 10.1126/scitranslmed.abc1078]
- 34 **Gao LL**, Wang ZH, Mu YH, Liu ZL, Pang L. Emodin Promotes Autophagy and Prevents Apoptosis in Sepsis-Associated Encephalopathy through Activating BDNF/TrkB Signaling. *Pathobiology* 2022; **89**: 135-145 [PMID: 34872094 DOI: 10.1159/000520281]
- 35 **Chang ZP**, Deng GF, Shao YY, Xu D, Zhao YN, Sun YF, Zhang SQ, Hou RG, Liu JJ. Shaoyao-Gancao Decoction Ameliorates the Inflammation State in Polycystic Ovary Syndrome Rats via Remodeling Gut Microbiota and Suppressing the TLR4/NF- κ B Pathway. *Front Pharmacol* 2021; **12**: 670054 [PMID: 34054541 DOI: 10.3389/fphar.2021.670054]
- 36 **Squillace S**, Salvemini D. Toll-like receptor-mediated neuroinflammation: relevance for cognitive dysfunctions. *Trends Pharmacol Sci* 2022; **43**: 726-739 [PMID: 35753845 DOI: 10.1016/j.tips.2022.05.004]
- 37 **Chen R**, Wang Z, Zhi Z, Tian J, Zhao Y, Sun J. Targeting the TLR4/NF- κ B pathway in β -amyloid-stimulated microglial cells: A possible

- mechanism that oxysophoridine exerts anti-oxidative and anti-inflammatory effects in an in vitro model of Alzheimer's disease. *Brain Res Bull* 2021; **175**: 150-157 [PMID: 34329731 DOI: 10.1016/j.brainresbull.2021.07.019]
- 38 **Shen J**, Zhang J, Deng M, Liu Y, Hu Y, Zhang L. The Antidepressant Effect of Angelica sinensis Extracts on Chronic Unpredictable Mild Stress-Induced Depression Is Mediated via the Upregulation of the BDNF Signaling Pathway in Rats. *Evid Based Complement Alternat Med* 2016; **2016**: 7434692 [PMID: 27642354 DOI: 10.1155/2016/7434692]
- 39 **Lee TH**, Park S, You MH, Lim JH, Min SH, Kim BM. A potential therapeutic effect of saikosaponin C as a novel dual-target anti-Alzheimer agent. *J Neurochem* 2016; **136**: 1232-1245 [PMID: 26710244 DOI: 10.1111/jnc.13515]
- 40 **Zhang Z**, Zhao R, Qi J, Wen S, Tang Y, Wang D. Inhibition of glycogen synthase kinase-3 β by Angelica sinensis extract decreases β -amyloid-induced neurotoxicity and tau phosphorylation in cultured cortical neurons. *J Neurosci Res* 2011; **89**: 437-447 [PMID: 21259330 DOI: 10.1002/jnr.22563]
- 41 **Chen YH**, Luo R, Lei SS, Li B, Zhou FC, Wang HY, Chen X, He X, Wang YZ, Zhan LH, Lu TT, Su J, Yu QX, Lv GY, Chen SH. Anti-inflammatory effect of Ganluyin, a Chinese classic prescription, in chronic pharyngitis rat model. *BMC Complement Med Ther* 2020; **20**: 265 [PMID: 32859182 DOI: 10.1186/s12906-020-03057-5]
- 42 **Ku SK**, Bae JS. Baicalin, baicalein and wogonin inhibits high glucose-induced vascular inflammation in vitro and in vivo. *BMB Rep* 2015; **48**: 519-524 [PMID: 25739393 DOI: 10.5483/bmbrep.2015.48.9.017]
- 43 **Behl T**, Kaur D, Sehgal A, Singh S, Sharma N, Zengin G, Andronic-Cioara FL, Toma MM, Bungau S, Bumbu AG. Role of Monoamine Oxidase Activity in Alzheimer's Disease: An Insight into the Therapeutic Potential of Inhibitors. *Molecules* 2021; **26** [PMID: 34207264 DOI: 10.3390/molecules26123724]
- 44 Corrigendum on: Wang H, Chen C, Li J, Yang X, Zhang H and Wang Z. Modified first dorsal metacarpal artery island flap for sensory reconstruction of thumb pulp defects. *J Hand Surg Eur Vol* 2016; **41**: 462 [PMID: 26936745 DOI: 10.1177/1753193416634262]
- 45 **Jurek AM**, Greenland S, Maldonado G, Church TR. Proper interpretation of non-differential misclassification effects: expectations vs observations. *Int J Epidemiol* 2005; **34**: 680-687 [PMID: 15802377 DOI: 10.1093/ije/dyi060]



Published by **Baishideng Publishing Group Inc**
7041 Koll Center Parkway, Suite 160, Pleasanton, CA 94566, USA

Telephone: +1-925-3991568

E-mail: bpgoffice@wjgnet.com

Help Desk: <https://www.f6publishing.com/helpdesk>

<https://www.wjgnet.com>

