

Title	Epithelioid granuloma mimicking lung cancer showed intense uptake on [18F]FAPI-74 PET
Author(s)	Watabe, Tadashi; David, Ivan Ray; Kimura, Toru et al.
Citation	European Journal of Nuclear Medicine and Molecular Imaging. 2023
Version Type	VoR
URL	https://hdl.handle.net/11094/93284
rights	This article is licensed under a Creative Commons Attribution 4.0 International License.
Note	

Osaka University Knowledge Archive : OUKA

<https://ir.library.osaka-u.ac.jp/>

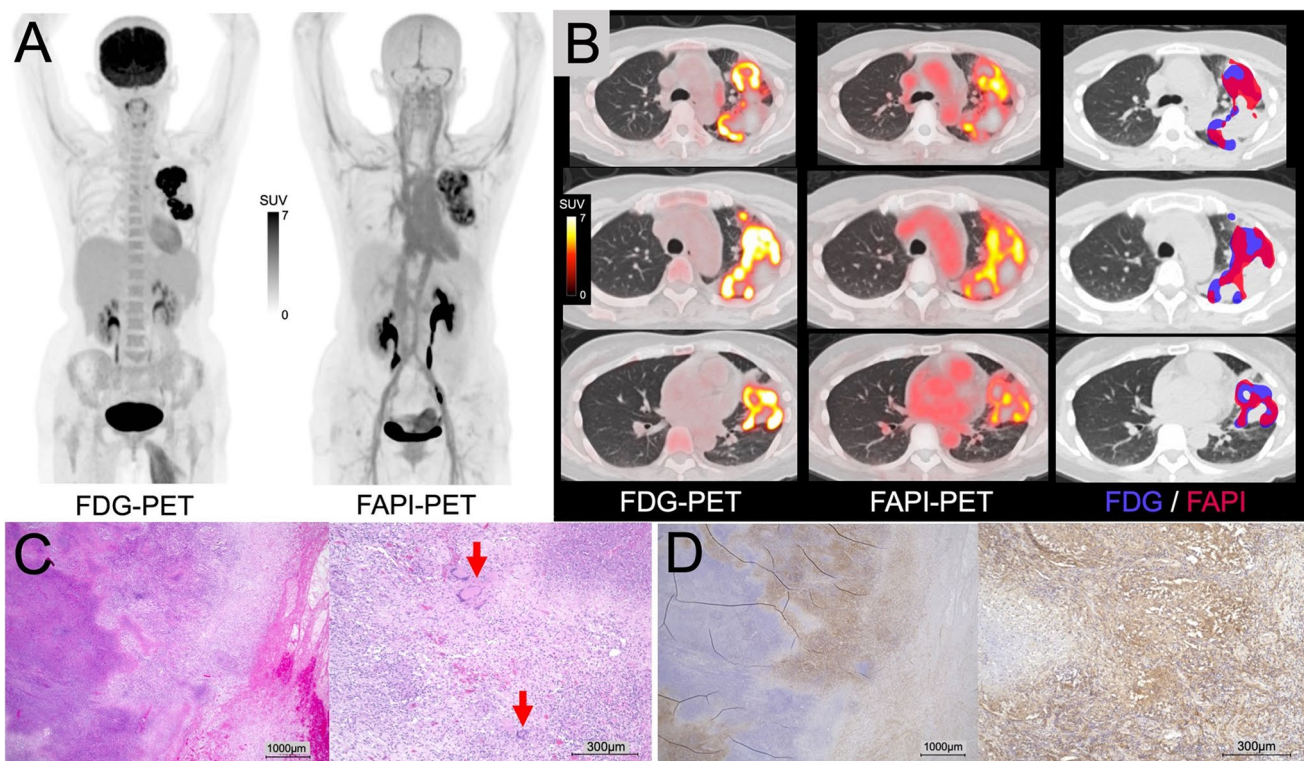
Osaka University



Epithelioid granuloma mimicking lung cancer showed intense uptake on [¹⁸F]FAPI-74 PET

Tadashi Watabe^{1,2} · Ivan Ray David^{1,3} · Toru Kimura⁴ · Takashi Hiroshima⁴ · Mitsuaki Tatsumi^{2,5} · Sadahiro Naka⁶ · Takashi Kamiya⁵ · Eriko Fukui⁴ · Takashi Kanou⁴ · Naoko Ose⁴ · Soichiro Funaki⁴ · Yuriko Mori⁷ · Jens Cardinale⁷ · Hiroki Kato^{1,2} · Eiichi Morii⁸ · Yasushi Shintani⁴ · Frederik L. Giesel^{2,7}

Received: 29 August 2023 / Accepted: 13 October 2023
© The Author(s) 2023



✉ Tadashi Watabe
watabe.tadashi.med@osaka-u.ac.jp

- 1 Department of Nuclear Medicine and Tracer Kinetics, Graduate School of Medicine, Osaka University, 2-2 Yamadaoka, Suita, Osaka 565-0871, Japan
- 2 Institute for Radiation Sciences, Osaka University, Toyonaka, Japan
- 3 Department of Nuclear Medicine, Jose R. Reyes Memorial Medical Center, Manila, Philippines
- 4 Department of General Thoracic Surgery, Graduate School of Medicine, Osaka University, Suita, Japan

- 5 Department of Radiology, Osaka University Hospital, Suita, Japan
- 6 Department of Pharmacy, Osaka University Hospital, Suita, Japan
- 7 Department of Nuclear Medicine, University Hospital Duesseldorf, Medical Faculty, Heinrich-Heine-University, Duesseldorf, Germany
- 8 Department of Pathology, Graduate School of Medicine, Osaka University, Suita, Japan

A 54-year-old woman suspected of lung cancer underwent [^{18}F]FDG and [^{18}F]FAPI-74 PET scans. CT revealed a 7-cm lesion in the left upper lobe. Despite detecting only necrotic cells on biopsy during bronchoscopy, malignancy was strongly suspected, leading to a planned lobectomy.

[^{18}F]FDG PET-CT showed a highly avid mass (SUVmax: 14.2) in the left upper lung lobe, along with suspicious lymph node metastases with mild uptake in the left hilar, thoracic para-aortic, and left supraclavicular regions (A: MIP; B: PET/CT fusion, left). Similarly, [^{18}F]FAPI-74 PET-CT also showed intense uptake (SUVmax: 9.02) with heterogeneous distribution in the same lesion, but with slightly larger extent (A and B, right), and no significant uptake was observed in the lymph nodes. Some areas displayed faint to mild FAPI uptake mismatched with FDG.

Histopathology revealed epithelioid granuloma (C: arrows indicate Langhans giant cells in H&E staining), but results for Grocott stain, PAS stain, and Ziehl–Neelsen stain were all negative. Immunohistochemical staining for FAP showed some areas with FAP expression surrounding the necrotic tissue in heterogeneous uptake on [^{18}F]FAPI-74 PET (D).

FAPI, an emerging pan-tumour tracer, also accumulates in chronic infections, leading to false positives [1]. Literature supports FAPI PET/CT's use in granulomatous conditions like tuberculosis [2–4]. The mismatch between FAPI and FDG accumulation may represent varying lesion stages. The FDG-avid lesion might represent an inflammatory-proliferative stage, while the FAPI-positive lesion could represent a fibrotic phase [5]. Evaluation of FAPI uptake in non-malignant tumours will expand the clinical utility of FAPI-PET across diverse scenarios.

Author contribution Conceptualisation: TW, ID, and FLG; data collection: TW, TK, TH, MT, SN, TK, EF, TK, NO, SF, and HK; original draft preparation: TW and ID; review and editing: YM, JC, and FLG; supervision: EM, YS, and FLG. All authors have read and agreed to the submitted version of the manuscript.

Funding Open access funding provided by Osaka University.

Declarations

Consent to participate Written informed consent was obtained from the patient.

Conflict of interest FLG is an advisor at ABX Radiopharmaceuticals, SOFIE Biosciences, Telix Pharma, and Alpha Fusion. FLG has shares in a consultancy group for iTheranostics. The other authors declare no potential conflicts of interest relevant to this study.

Open Access This article is licensed under a Creative Commons Attribution 4.0 International License, which permits use, sharing, adaptation, distribution and reproduction in any medium or format, as long as you give appropriate credit to the original author(s) and the source, provide a link to the Creative Commons licence, and indicate if changes were made. The images or other third party material in this article are included in the article's Creative Commons licence, unless indicated otherwise in a credit line to the material. If material is not included in the article's Creative Commons licence and your intended use is not permitted by statutory regulation or exceeds the permitted use, you will need to obtain permission directly from the copyright holder. To view a copy of this licence, visit <http://creativecommons.org/licenses/by/4.0/>.

References

1. Meetschen M, Sandach P, Darwiche K, Theegarten D, Moter A, Schaarschmidt BM, et al. Rabbit fever: granulomatous inflammation by *Francisella tularensis* mimics lung cancer in dual tracer ^{18}F FDG and ^{68}Ga -FAPI PET/CT. *Eur J Nucl Med Mol Imaging*. 2023;50:2567–9. <https://doi.org/10.1007/s00259-023-06175-7>.
2. Gu B, Luo Z, He X, Wang J, Song S. ^{68}Ga -FAPI and ^{18}F -FDG PET/CT images in a patient with extrapulmonary tuberculosis mimicking malignant tumor. *Clin Nucl Med*. 2020;45:865–7. <https://doi.org/10.1097/RLU.0000000000003279>. (Published online).
3. Liu H, Liu L, Chen L, Zhao Y, Zhang W, Cai L, et al. [^{68}Ga]Ga-DOTA-FAPI-04 PET/CT imaging of benign pulmonary solitary fibrous tumour. *Eur J Nucl Med Mol Imaging*. 2021;48:2053–4. <https://doi.org/10.1007/s00259-021-05199-1>.
4. Hao B, Wu X, Pang Y, Sun L, Wu H, Huang W, et al. [^{18}F]FDG and [^{68}Ga]Ga-DOTA-FAPI-04 PET/CT in the evaluation of tuberculous lesions. *Eur J Nucl Med Mol Imaging*. 2021;48:651–2. <https://doi.org/10.1007/s00259-020-04941-5>.
5. Jia G, Bian D, Cheng C, Wang M, Zuo C. The different manifestations of ^{18}F -FDG PET/CT and ^{68}Ga -FAPI-04 PET/CT in evaluation of the steroid therapy response for IgG4-related disease: a case report. *Front Nucl Med*. 2023;2. <https://doi.org/10.3389/fnume.2022.1038797>.

Publisher's Note Springer Nature remains neutral with regard to jurisdictional claims in published maps and institutional affiliations.