



---

Year: 2023

---

## Because I'm happy - positive affect and its predictive value for future disease activity in patients with inflammatory bowel diseases: a retrospective cohort study

Lang, Brian M ; Ledergerber, Martina ; Jordi, Sebastian Bruno Ulrich ; Krupka, Niklas ; Biedermann, Luc ; Schreiner, Philipp ; Juillerat, Pascal ; Wyss, Jacqueline ; Vavricka, Stephan R ; Zeitz, Jonas ; von Känel, Roland ; Rogler, Gerhard ; Beerenwinkel, Niko ; Misselwitz, Benjamin

**Abstract:** **BACKGROUND:** While the detrimental impact of negative emotions on the clinical course of inflammatory bowel disease (IBD) and quality of life has been extensively investigated, evidence for a potential impact of positive emotions is scarce. **OBJECTIVES:** We aim to analyse contributing factors of positive affect and their predictive value for disease course in IBD patients. **DESIGN:** In this retrospective cohort study, epidemiological, psychosocial and IBD disease characteristics of Swiss IBD cohort study patients were analysed longitudinally. **METHODS:** Epidemiological, psychosocial and disease characteristics were extracted from the database of the Swiss IBD cohort study. Participants' positive emotions were assessed cross-sectionally with the seven-item Marburg questionnaire (range 1-6) addressing positive affect in different aspects of daily life. Predictors of positive emotions were identified by linear regression. The quantitative longitudinal impact of positive emotions on the further disease course was analysed using a multivariable Cox proportional hazards model. **RESULTS:** Among 702 IBD patients, those reporting more positive emotions were found to have significantly less intense medical treatment, less pain and fewer depressive symptoms ( $p < 0.05$ ). A higher percentage of variability in positive emotions was explained by pain (36%) and depressive symptoms (13%) than by epidemiological characteristics (0.3%), or characteristics of IBD and its treatment (2.4%). Patients with higher levels of positive emotions (score  $> 3.5$ ) experienced longer flare-free survival, also after adjusting for confounders (adjusted hazard ratio: 0.39,  $p < 0.05$ ). **CONCLUSIONS:** The absence of pain and depressive symptoms were the strongest drivers for high positive affect. Higher scores of positive affect were associated with longer disease-free survival in IBD patients.

DOI: <https://doi.org/10.1177/17562848231179335>

Posted at the Zurich Open Repository and Archive, University of Zurich

ZORA URL: <https://doi.org/10.5167/uzh-254255>

Journal Article

Published Version



The following work is licensed under a Creative Commons: Attribution-NonCommercial 4.0 International (CC BY-NC 4.0) License.

Originally published at:

Lang, Brian M; Ledergerber, Martina; Jordi, Sebastian Bruno Ulrich; Krupka, Niklas; Biedermann, Luc; Schreiner, Philipp; Juillerat, Pascal; Wyss, Jacqueline; Vavricka, Stephan R; Zeitz, Jonas; von Känel, Roland; Rogler, Gerhard; Beerenwinkel, Niko; Misselwitz, Benjamin (2023). Because I'm happy - positive affect and its predictive value for

future disease activity in patients with inflammatory bowel diseases: a retrospective cohort study. *Therapeutic Advances in Gastroenterology*, 16:17562848231179335.  
DOI: <https://doi.org/10.1177/17562848231179335>

# Because I'm happy – positive affect and its predictive value for future disease activity in patients with inflammatory bowel diseases: a retrospective cohort study

Brian M. Lang\*, Martina Ledergerber\*<sup>id</sup>, Sebastian Bruno Ulrich Jordi, Niklas Krupka, Luc Biedermann<sup>id</sup>, Philipp Schreiner, Pascal Juillerat, Jacqueline Wyss, Stephan R. Vavricka, Jonas Zeitz, Roland von Känel, Gerhard Rogler, Niko Beerenwinkel# and Benjamin Misselwitz# on behalf of the Swiss IBD Cohort Study Group†

## Abstract

**Background:** While the detrimental impact of negative emotions on the clinical course of inflammatory bowel disease (IBD) and quality of life has been extensively investigated, evidence for a potential impact of positive emotions is scarce.

**Objectives:** We aim to analyse contributing factors of positive affect and their predictive value for disease course in IBD patients.

**Design:** In this retrospective cohort study, epidemiological, psychosocial and IBD disease characteristics of Swiss IBD cohort study patients were analysed longitudinally.

**Methods:** Epidemiological, psychosocial and disease characteristics were extracted from the database of the Swiss IBD cohort study. Participants' positive emotions were assessed cross-sectionally with the seven-item Marburg questionnaire (range 1–6) addressing positive affect in different aspects of daily life. Predictors of positive emotions were identified by linear regression. The quantitative longitudinal impact of positive emotions on the further disease course was analysed using a multivariable Cox proportional hazards model.

**Results:** Among 702 IBD patients, those reporting more positive emotions were found to have significantly less intense medical treatment, less pain and fewer depressive symptoms ( $p < 0.05$ ). A higher percentage of variability in positive emotions was explained by pain (36%) and depressive symptoms (13%) than by epidemiological characteristics (0.3%), or characteristics of IBD and its treatment (2.4%). Patients with higher levels of positive emotions (score  $> 3.5$ ) experienced longer flare-free survival, also after adjusting for confounders (adjusted hazard ratio: 0.39,  $p < 0.05$ ).

**Conclusions:** The absence of pain and depressive symptoms were the strongest drivers for high positive affect. Higher scores of positive affect were associated with longer disease-free survival in IBD patients.

**Keywords:** disease course, inflammatory bowel disease, positive affect

Received: 19 August 2022; revised manuscript accepted: 15 May 2023.

## Introduction

Inflammatory bowel disease (IBD) is a group of multifactorial diseases resulting in a chronic relapsing inflammation of the gastrointestinal

tract. The two main entities of IBD are Crohn's disease (CD) and ulcerative colitis (UC). The prevalence of IBD is rising in industrialized countries,<sup>1</sup> therefore representing an increased burden

*Ther Adv Gastroenterol*

2023, Vol. 16: 1–15

DOI: 10.1177/  
17562848231179335

© The Author(s), 2023.  
Article reuse guidelines:  
sagepub.com/journals-  
permissions

Correspondence to:  
**Benjamin Misselwitz**  
Department of Visceral  
Surgery and Medicine,  
Inselspital Bern and  
University of Bern,  
Freiburgstr. 18, Bern 3010,  
Switzerland  
[benjamin.misselwitz@insel.ch](mailto:benjamin.misselwitz@insel.ch)

**Brian M. Lang**  
**Niko Beerenwinkel**  
Department of Biosystems  
Science and Engineering,  
ETH Zurich, Basel,  
Switzerland

SIB Swiss Institute of  
Bioinformatics, Basel,  
Switzerland

**Martina Ledergerber**  
**Luc Biedermann**  
**Philipp Schreiner**  
**Stephan R. Vavricka**  
**Gerhard Rogler**  
Department of  
Gastroenterology and  
Hepatology, University  
Hospital Zurich and  
University of Zurich,  
Zurich, Switzerland

**Sebastian Bruno Ulrich**  
**Jordi**  
Department of  
Gastroenterology and  
Hepatology, University  
Hospital Zurich and  
University of Zurich,  
Zurich, Switzerland

Department of Visceral  
Surgery and Medicine,  
Inselspital Bern and  
Bern University, Bern,  
Switzerland

**Niklas Krupka**  
**Pascal Juillerat**  
**Jacqueline Wyss**  
Department of Visceral  
Surgery and Medicine,  
Inselspital Bern and  
Bern University, Bern,  
Switzerland

**Jonas Zeitz**  
Department of  
Gastroenterology and  
Hepatology, University  
Hospital Zurich and  
University of Zurich,  
Zurich, Switzerland

Centre of  
Gastroenterology, Clinic  
Hirslanden, Zurich,  
Switzerland

**Roland von Känel**  
Department of  
Consultation-Liaison  
Psychiatry and  
Psychosomatic Medicine,  
University Hospital Zurich  
and University of Zurich,  
Zurich, Switzerland

\*Both authors contributed  
equally as first authors.

#Both authors contributed  
equally as last authors.

†Members of the Swiss  
IBD Cohort Study Group  
are listed in Appendix A.

on healthcare systems.<sup>2</sup> The treatment of IBD generally focuses on endpoints like clinical remission and endoscopic healing;<sup>3,4</sup> however, the growing knowledge about the gut-brain axis and its bi-directional dimension, is increasingly considered in the disease concept and new target strategies.<sup>4-6</sup> Apart from the burden of the chronic disease on mental health of IBD patients, there is evidence for an impact of stress levels on subsequent disease outcomes.<sup>7,8</sup> Research focuses mainly on quality of life (QoL),<sup>9</sup> negative affect, psychological stress, depression, or anxiety.<sup>10-12</sup>

The gut-brain axis has been investigated in animal models.<sup>13</sup> In rodents, experimental colitis can lead to sickness, social withdrawal, loss of motivation, fatigue, mediated by the afferent vagal nerve and immune activation in the central nervous system with cytokines and nitric oxide pathways.<sup>14-16</sup> On the other hand, manipulation of mental state by induction of experimental depression was able to aggravate experimental colitis for which antidepressants showed protective effects.<sup>17,18</sup> These data suggest an intimate connection between gut inflammation and altered mental state but neither gut inflammation nor the complex human mental state is likely faithfully reflected in animal models.

The mental state of patients can be assessed with a variety of tools, some of them specifically validated for the use in IBD. Often applied are the well-established Intestinal Bowel Disease Questionnaire (IBDQ),<sup>19</sup> the short-form (36) health survey (SF-36)<sup>20</sup> and the hospital anxiety and depression scale (HADS-A and -D, respectively).<sup>21</sup> Studies show that diagnosis and progression of IBD have a significant impact on mental health.<sup>22,23</sup> Therefore, screening for negative emotions can identify patients with a more severe disease course, who potentially benefit from more intense anti-inflammatory treatment or psychiatric intervention.

Besides negative affect, individuals also experience positive affect, an umbrella term used to subsume feelings like happiness, contentment and joy.<sup>24</sup> Positive and negative affect are associated with different personality traits<sup>25,26</sup> and are not just opposites of each other.<sup>27</sup> Emotional wellbeing, another often used term in the same context, is defined as the experience of frequent positive affect and infrequent negative affect<sup>28</sup> and is one of the central dimensions of health and

quality of life.<sup>29</sup> In a systematic review, Diener *et al.* concluded that higher levels of subjective wellbeing improve health and longevity.<sup>30</sup> A study addressing positive and negative emotions in patients with cardiovascular disease (CVD) found a modulating effect of high positive affect on subsequent CVD-related events.<sup>31</sup>

Considering these robust biological and health-related effects of positive emotions,<sup>30,32</sup> we hypothesize that positive affect might be a contributor to the mental state, interacting with intestinal inflammation via the gut-brain axis. So far, in contrast to negative affect, data regarding the role of positive affect in patients with IBD has only been investigated in small studies<sup>33</sup> and a systematic evaluation in a large patient cohort is missing. The Marburg questionnaire on habitual health findings,<sup>34,35</sup> from now on referred to as Marburg questionnaire, is an easy-to-use tool which addresses the positive affectivity of patients<sup>36</sup> (e.g. presence of positive feelings and contentment in different areas of daily life<sup>34</sup>). For the retrospective study at hand, we used the Marburg questionnaire to examine habitual positive affect in IBD patients and to assess its potential influence on the subsequent IBD disease course.

## Material and methods

### Study population

The Swiss IBD cohort study (SIBDC) has been collecting data of IBD patients in Switzerland since 2006. The design of SIBDC cohort has been explained elsewhere in detail,<sup>37,38</sup> in brief, its aim is to improve the understanding of pathogenesis, trigger factors for flares, as well as the consequences of CD and UC on patients' physical, psychological and social status using the gathered data of a large cohort.<sup>37,38</sup> At a first assessment, the data of newly included patients is collected retrospectively, subsequently it is updated yearly with patient- and physician-based questionnaires. All patient data used are de-identified and cannot be followed back to an individual patient.

In the context of a separate analysis in the SIBDC<sup>39</sup> a questionnaire focussing on pain and its influence on QoL was sent to all patients at that time point included in the SIBDC cohort in 2013.

For our retrospective analysis, data from 2064 IBD patients with 948 responses to the German Pain Questionnaire (GPQ) were available. For inclusion into our study population, patients required at least one regular follow-up after receipt of the questionnaire and completeness of responses related to the Marburg questionnaire.

### Measures

The questions sent to all SIBDC patients were based on the validated questionnaire ‘Deutscher Schmerzfragebogen (DSF)’, a GPQ,<sup>36</sup> which focuses on a biomedical-psycho-social pain model. The GPQ also includes the Marburg questionnaire on habitual health findings, addressing the patient’s positive affect, such as the ability to enjoy life, experience joy and cosiness, feel contentment with work performance and physical condition and ability to fulfil daily requirements.<sup>35</sup> It consists of seven questions rated on a six-point Likert scale (1–6; 1 representing low positive affect) and its focus lies on the emotions experienced in the 2 weeks prior to assessment.<sup>34</sup> The questions are averaged for the final score, resulting in scores from one to six. A maximum of one missing item can be replaced with the mean of the other six items. Validation of the questionnaire showed an internal consistency with Cronbach’s  $\alpha$  of 0.91.<sup>34</sup> An English version of the questionnaire (author’s translation, not used for data acquisition) is shown in Supplemental Table 1, as well as the German original and the French version used for data acquisition (Supplemental Tables 2 and 3). For the calculation of flare recurrence, positive affect was used as a nominal value and high value was defined before analysis as a score higher than 3.5 (middle of the scale). 3.5 is the lower bound for a patient being on average at least slightly happy; no other thresholds were analysed.

We extracted demographic information such as sex, age, education, ethnicity, marital status, education, smoking<sup>40,41</sup> and drinking habits from the SIBDC database. Clinical information included diagnosis, age at diagnosis, past therapies and treatments (biologicals, steroids, surgeries), and extraintestinal manifestations. Information concerning disease activity (Crohn’s disease activity index, CDAI<sup>42</sup>; Modified Truelove and Witts Severity Index, MTWAI<sup>43</sup>) and psychosocial information (HADS,<sup>21</sup> SF36,<sup>20</sup> IBDQ<sup>19</sup>) were

extracted from the last regular assessment before the completion of the Marburg questionnaire.

First occurrence of a flare was defined following the methods used in previous studies.<sup>44–46</sup> We defined a flare as the first occurrence of one or more of the following events after filling the questionnaire: high disease activity (MTWAI > 10 or CDAI > 150), physician-reported flare events or worsening of the disease (assessed by the physician and recorded in the SIBDC data base), fistulas and stenosis, anal fissure, abscess, any type of IBD surgery and initiation of treatment with steroids or biologicals (tumour necrosis factor (TNF) – inhibitor or vedolizumab). No patients were treated with ustekinumab, as the data export was in 2015. Patients who were already having a flare at the point in time of the questionnaire were excluded from the analysis. If the last regular assessment was more than 12 months prior to the questionnaire, data was not considered. In subgroup analyses we tested for significant differences in several subgroups such as diagnosis (CD or UC), patient sex, severity of the disease (measured with the CDAI and MTWAI) and the level of pain described by the patient (CDAI/MTWAI derived). Also taken into account were the pain and disability metrics of the GPQ.

### Statistical analysis

We first compared responders of the pain questionnaire to non-responders with *t*-tests for continuous data and chi-square tests for categorical data. The distribution of the reported wellbeing of our cohort was compared to that of other studies, by assessing the means and 95% confidence intervals.<sup>47</sup> We built four multivariable linear models, each including only variables from a specific covariable grouping (epidemiological, IBD-related, pain-related and psychosocial characteristics) to visualize the relative importance of the covariates in explaining the variation of patient-reported wellbeing. For final model selection, we generated a Lasso regression model<sup>48</sup> considering all covariates, and those covariates with estimated non-zero coefficients were presented as the selected model. We computed relative importance of the covariates in each of the five models with proportional marginal variance decomposition.<sup>49</sup> Each model was assessed for multi-collinearity via calculation of variance inflation factors (VIF) for each

covariate.<sup>50</sup> Corrected *p*-values are presented as derived through the use of the lasso projection method (de-sparsified Lasso), which uses bootstrap samples to assess uncertainty surrounding parameter estimates.<sup>51,52</sup>

To assess the relationship between flare occurrence and patient wellbeing, we computed the time-to-flare or end of follow-up for each patient starting at the date entered on the wellbeing questionnaire. A flare was defined as the physician-reported flare in the SIBDC database. Any patient not having a flare by our censoring date of 7 October 2015 or who dropped out was counted as censored at those time points. Differences in survival between the high- and low-wellbeing groups were first assessed with Kaplan–Meier estimation<sup>53</sup> and a log-rank test. A multivariable Cox proportional hazards model was fit to model the hazard of flare controlling for relevant confounders. For this analysis specifically, mean-value imputation was done for two of the independent variables (IBDQ and GPQ disability score). Analyses were carried out in R version 3.5.2<sup>54</sup> using the packages *glmmTMB* and *relaimpo*.<sup>55,56</sup>

This study was conducted following the principles outlined by the STROBE cohort guidelines.<sup>57</sup>

## Results

### Study population

A total of 948 patients of the SIBDC filled out the questionnaire; of those a final population of 400 CD and 302 UC patients met our study inclusion criteria. Characteristics of responders versus non-responders to the Marburg questionnaire are shown in Supplemental Table 4. Table 1 gives an overview of the study population.

### Positive affect in IBD

In our cohort, the average Marburg score was 4.65 for UC and 4.42 for CD (Figure 1). We first conducted a univariate regression analysis to identify important factors contributing to positive affectivity (Supplemental Table 5). Relevant predictors were inactive disease, no extraintestinal manifestations (EIM), lower levels of pain and no symptoms of depression.

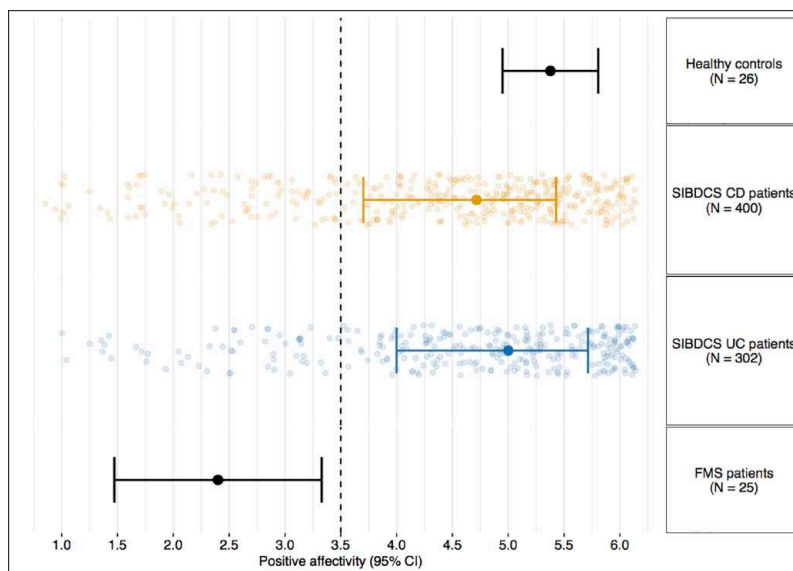
To simultaneously test for the effects of several parameters, we used multivariable linear regression analyses. Due to the high number of predictors we created four separate models for epidemiological, IBD-related, pain-related, or psychosocial characteristics, respectively (Table 2). Most associations observed in the univariate analyses were confirmed. Considering epidemiological features (Model 1), younger age [Slope:  $-0.009$ , 95% CI ( $-0.016$ ,  $-0.0025$ )], Swiss citizenship [Slope:  $0.29$ , 95% CI ( $0.033$ ,  $0.54$ )], higher education [Slope:  $0.24$ , 95% CI ( $0.033$ ,  $0.45$ )], and no smoking [Slope:  $-0.29$ , 95% CI ( $-0.48$ ,  $-0.098$ )] predicted higher values of positive affectivity. Regarding IBD characteristics (Model 2), inactive disease [Slope:  $-1.3$ , 95% CI ( $-2$ ,  $-0.72$ )], absence of EIM [Slope:  $-0.53$ , 95% CI ( $-0.74$ ,  $-0.33$ )] and treatment characteristics [few past or current steroids (Slope:  $-0.4$ , 95% CI: ( $-0.62$ ,  $-0.17$ )) and no/ low number of biologics (Slope:  $-0.39$ , 95% CI ( $-0.56$ ,  $-0.21$ )) in the history] were associated with high values. The pain and psychosocial model, showed various descriptors of pain [Slope:  $0.79$ , 95% CI ( $0.37$ ,  $1.2$ )], depression and anxiety [Slope:  $-0.16$ , 95% CI ( $-0.19$ ,  $-0.14$ )] as well as the IBDQ [Slope:  $0.024$ , 95% CI ( $0.021$ ,  $0.027$ )] and SF6 scores to be main influencers of positive affectivity scores (Models 3 and 4). Assessment of VIF for each model suggested that multicollinearity was not a large issue in our models.

To determine the most relevant parameters in a comprehensive simplified model, we constructed a multivariable lasso-penalized regression model. This model included all covariates and selected the predictors that were found to have non-zero coefficients. We found that no/low number of biologics [Slope:  $-0.18$ , 95% CI ( $-0.31$ ,  $-0.041$ )], low pain intensity [Slope:  $-0.018$ , 95% CI ( $-0.022$ ,  $-0.014$ )] and pain disability [Slope:  $-0.42$ , 95% CI ( $-0.52$ ,  $-0.31$ )], both according to the GPQ and the absence of depressive symptoms [Slope:  $-0.098$ , 95% CI ( $-0.12$ ,  $-0.078$ )] to significantly predict higher scores of positive affect (Table 2).

We analysed how much of the variability in positive affect (as assessed with proportional marginal variance decomposition, see Methods) could be explained by our multivariate models of positive affect (Models 1–4 and the fitted model). The epidemiological model and the model with IBD

**Table 1.** Study population characteristics. Variables are broken into four groups based on a general grouping.

Patient characteristics	Crohn's disease	Ulcerative colitis
Total patients	400	302
Epidemiological characteristics (Model 1)		
Age in years, mean (SD)	46.9 (15.0)	47.3 (13.8)
Gender – female (%)	212 (53.0)	149 (49.3)
Ethnicity – Caucasian (%)	313 (83.0)	238 (84.1)
Marital status – married (%)	172 (46.6)	160 (57.1)
Higher education – yes (%)	109 (28.9)	91 (32.2)
Smoking – previous or current (%)	210 (52.5)	96 (31.8)
Frequent drinking – yes (%)	34 (9.0)	17 (5.9)
IBD characteristics (Model 2)		
Disease duration, mean (SD)	17.0 (10.7)	15.0 (9.1)
Active disease (%)	10 (2.5)	6 (2.0)
CDAI (0–600), mean (SD)	37.5 (50.5)	
MTWAI (0–21), mean (SD)		3.0 (3.1)
Fistula – ever (%)	18 (8.7)	
Extraintestinal manifestations (previous or current, %)	59 (28.6)	31 (21.2)
Steroid (previous or current, %)	63 (30.6)	65 (44.5)
Number of therapies, mean (SD)	1.4 (0.9)	1.7 (1.0)
Surgeries in the last 2 years (yes %)	19 (5.2)	4 (1.4)
Number of biologicals, mean (SD)	0.5 (0.6)	0.2 (0.4)
Pain characteristics (Model 3)		
Maximum pain (0–4) (CDAI/MTWAI derived), <sup>†</sup> mean (SD)	1.2 (0.9)	1.0 (0.8)
Pain level (0–4) – GPQ derived, <sup>‡</sup> mean (SD)	1.4 (1.0)	1.3 (1.0)
Presence of pain <sup>†</sup> (yes, %)	18 (4.5)	18 (6.0)
Disability level (0–3), <sup>‡</sup> mean (SD)	0.5 (0.9)	0.4 (0.8)
Psychosocial characteristics (Model 4)		
Positive affect (Marburg questionnaire), <sup>‡</sup> mean (SD)	4.4 (1.3)	4.7 (1.2)
Depression symptoms (HADS-D) (yes, %)	9 (4.5)	7 (5.0)
Anxiety symptoms (HADS-A) (yes, %)	21 (10.6)	7 (5.0)
IBDQ – score, <sup>†</sup> mean (SD)	176.7 (29.9)	181.1 (29.2)
SF36 – score, <sup>†</sup> mean (SD)	609.4 (178.73)	643.2 (154.6)
CDAI, Crohn's disease activity index; GPQ, German pain questionnaire (Deutscher Schmerzfragebogen); HADS, Hospital Anxiety and Depression Scale; IBDQ, Inflammatory Bowel Disease Questionnaire; MTWAI, Modified Truelove and Witts Severity Index; SD, standard deviation; SF36, Short Form (36) Health Survey. <sup>†</sup> Last regular follow-up, <sup>‡</sup> GPQ derived.		



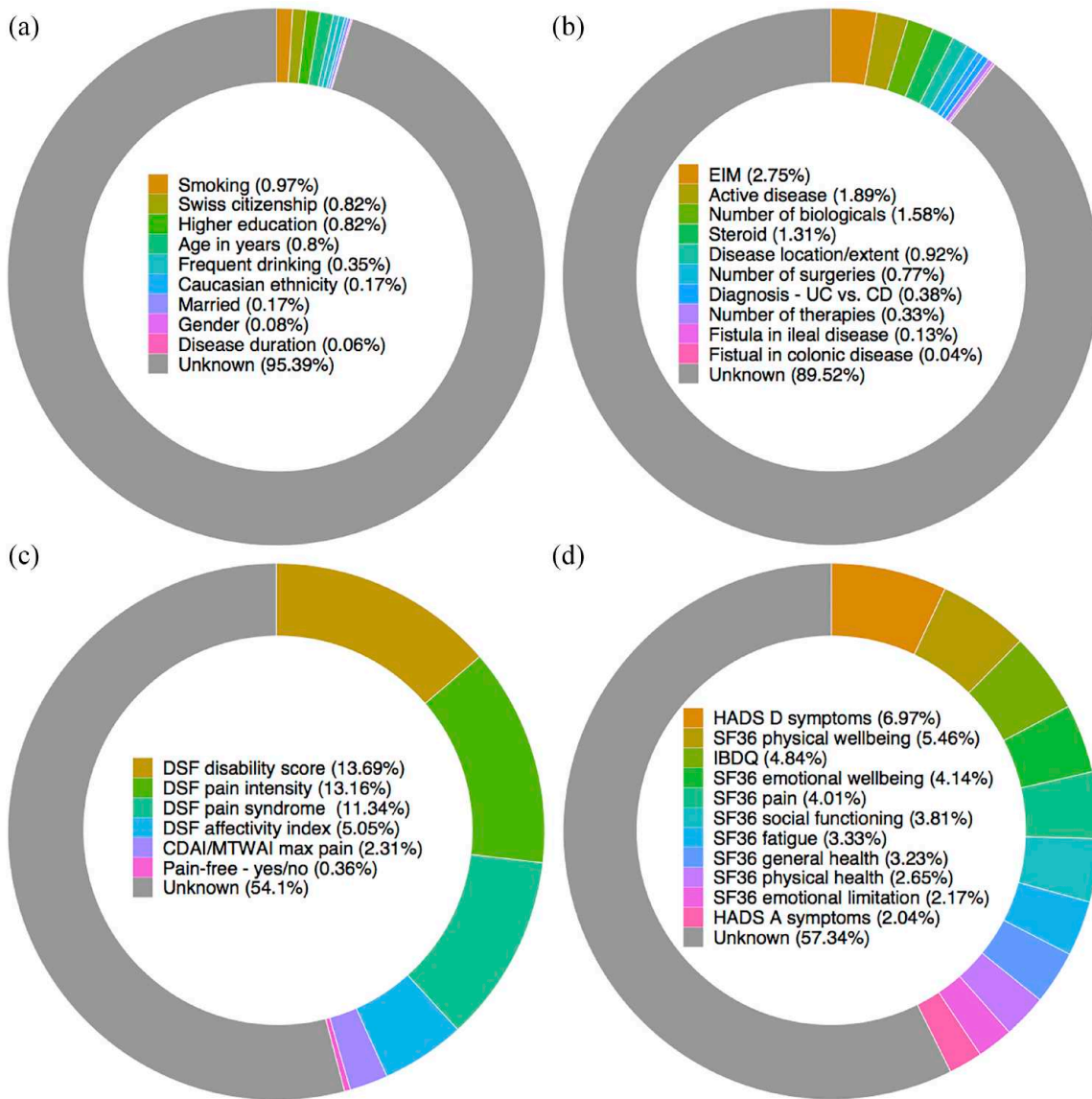
**Figure 1.** Positive affect in Swiss IBD cohort patients. Yellow and blue scatter plots: distribution and median value of positive affect (as assessed by the Marburg questionnaire) for CD and UC patients from the SIBDCS. Filled circles: Median reported positive affect. Whiskers: Upper and lower interquartile range for reported positive affect. Black dashed vertical line: Cut-off of 3.5 used in subsequent calculations for high/low positive affect. Healthy controls and fibromyalgia syndrome patients: Ranges for a healthy control and a fibromyalgia syndrome cohort reported in the literature.<sup>58</sup> CD, Crohn’s disease; UC, ulcerative colitis; IBD, inflammatory bowel disease; SIBDCS, The Swiss IBD cohort study.

**Table 2.** Reduced model for positive affectivity.

Variable	Slope (95% CI)	p-Value
<b>Epidemiological characteristics</b>		
Gender (female/male)	0.15 (0.00012, 0.29)	0.2
<b>IBD characteristics</b>		
Disease location (ileal)	-0.14 (-0.3, 0.02)	0.26
Disease extent (pancolitis)	-0.085 (-0.29, 0.12)	0.42
Number of surgeries	-0.13 (-0.32, 0.055)	0.34
Number of biologicals	-0.18 (-0.31, -0.041)	0.054
<b>Pain characteristics</b>		
GPQ pain intensity (0–100)	-0.018 (-0.022, -0.014)	7.80E-18*
GPQ disability score (0–100)	-0.42 (-0.52, -0.31)	7.90E-13*
<b>Psychosocial characteristics</b>		
HADS depressive symptoms (0–21)	-0.098 (-0.12, -0.078)	4.00E-19*

Penalized multivariable linear regression model (Lasso) predicting continuous-valued positive affectivity score. *p*-Values are Bonferonni adjusted. \*Statistical significance at the  $\alpha=0.05$  level.  
CI, confidence interval; GPQ, German Pain Questionnaire [Deutscher Schmerzfragebogen]; HADS, Hospital Anxiety and Depression Score; IBD, inflammatory bowel disease.





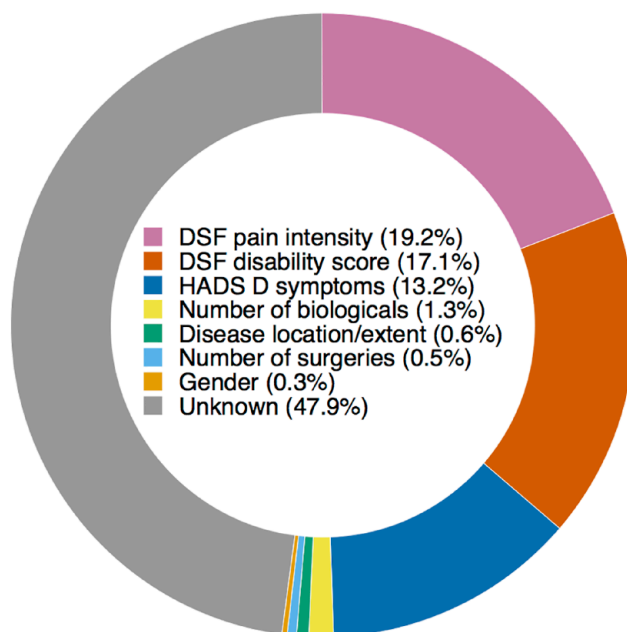
**Figure 2.** Relative importance of variables predicting positive affect. Four multivariable linear regression models are fit predicting positive affect as a continuous variable. Relative importance is calculated with proportional marginal variance decomposition. Relative importance of model variables within each model are shown with area proportional to importance: (a) epidemiological model, (b) IBD characteristics, (c) pain model and (d) psychological model. IBD, inflammatory bowel disease.

characteristics (parameters only present in IBD patients) explained only 4% and 10% of the variability (Figure 2(a) and (b)). In contrast, the explanatory power of the pain model and the psychosocial model were larger, explaining 46% and 43% of the variability (Figure 2(c) and (d)). The predictive power of the fitted model with selected characteristics from all models was highest (52% of variability, Figure 3). In this model, critical

drivers for low positive affect were the pain intensity and pain disability as well as the presence of symptoms of depression.

#### Flare-free survival

We aimed to test, whether positive affect was a protective factor regarding future IBD flares. In our study, a flare was defined as a new occurrence



**Figure 3.** Relative importance of variables in Lasso-penalized model for positive affect. A lasso-penalized regression is fit predicting positive affect as a continuous variable. Relative importance is calculated with proportional marginal variance decomposition. Relative importance of model variables within each model are shown with area proportional to importance.

of one or more of the following events after assessment of positive affect: high disease activity (MTWAI > 10 or CDAI > 150), physician-reported flare, fistulas and stenosis, anal fissure, abscess, any type of IBD surgery and initiation of intake of steroids or biologicals.<sup>44-46</sup> When patients were stratified by quantile of reported positive affectivity, less flare events were found in groups with higher levels of positive affectivity (Supplemental Table 6). We tested whether high scores of positive affect (Marburg score > 3.5) were associated with patient flare-free survival with Kaplan Meier curves and the log-rank test and found that patients with high scores of positive affect experienced a longer flare-free follow-up period ( $p = 0.0027$ , Figure 4). This association remained significant after adjustment when we assessed hazard of IBD flare in a Cox proportional hazards model corrected for relevant confounders (HR = 0.39,  $p = 0.0048$ , Table 3).

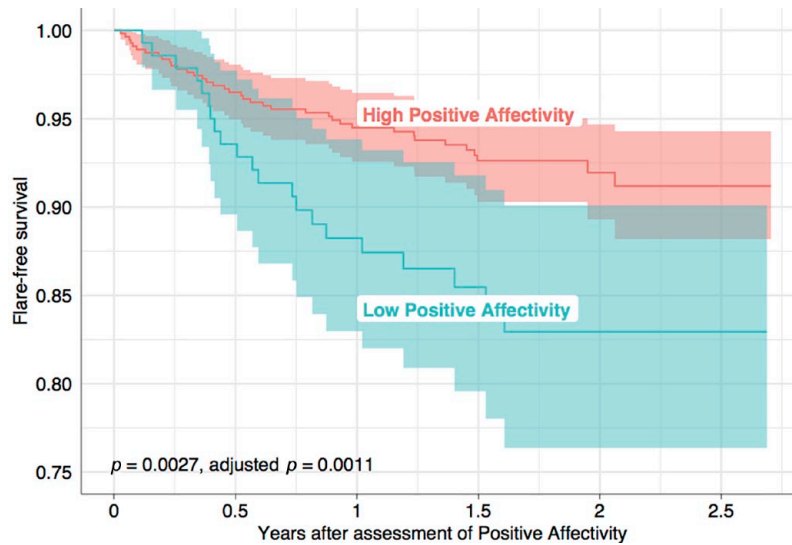
### Discussion

In our study on the impact of positive affect on the disease course of IBD patients we were able to identify two IBD-relevant patterns: higher scores were associated with less pain, and absence of

symptoms of anxiety and depression. Further, higher values of positive affect were associated with longer flare-free survival.

In previous non-IBD studies, emotional wellbeing has been associated with positive health outcomes, including longevity<sup>30,32,59</sup> and several mechanisms have been advanced: (i) positive affect improved the coping with stress: In a British study with healthy volunteers, objective markers of stress such as heart rate, saliva cortisol and fibrinogen stress response were elevated in the least happiest quintile compared to the happiest quintile.<sup>60</sup> (ii) positive emotions also affected the immune system and inflammation.<sup>30</sup> For instance, positive affectivity predicted resistance to experimental rhinovirus and influenza virus infection.<sup>61</sup> (iii) subjective positive affect has been robustly associated with physical activity and protected against obesity, heavy drinking, smoking and risk-taking behaviour.<sup>30</sup>

In IBD, our findings are in line with a gut-brain axis, mediating the interaction of mental state with intestinal inflammation.<sup>13</sup> Previous studies established an increased risk for IBD recurrence and a more aggressive disease course in patients



**Figure 4.** Kaplan–Meier curves for flare-free survival. Positive affect is split into two categories (high/low) around the value of 3.5. Red curve: High positive affect ( $>3.5$ ). Blue curve: Low positive affect ( $\leq 3.5$ ). Shaded regions are 95% CI for the Kaplan–Meier curves. ‘ $p$ ’ is the unadjusted log-rank test  $p$ -value. ‘adjusted  $p$ ’ is the unadjusted  $p$ -value for positive affect from a multivariable Cox proportional hazards model.

**Table 3.** Multivariable Cox proportional hazards model predicting flare-free survival.

Variable	HR (95% CI)	$p$
Age in years	1.10 (0.90, 1.30)	0.44
Gender (female/male)	1.30 (0.78, 2.30)	0.3
Diagnosis (UC versus CD)	0.71 (0.41, 1.20)	0.22
GPQ disability score (0–3)	0.75 (0.52, 1.10)	0.1
HADS depressive symptoms (0–21)	0.99 (0.89, 1.10)	0.86
HADS anxiety symptoms (0–21)	1.00 (0.94, 1.10)	0.5
Positive affectivity (Marburg questionnaire) (high versus low)	0.39 (0.21, 0.75)	0.0048*

Age in years has been scaled as (X/10) for convenience in this table. \*Statistical significance at the  $\alpha=0.05$  level. CI, confidence interval; CD, Crohn’s disease activity index; GPQ, German pain questionnaire (Deutscher Schmerzfragebogen); HADS, Hospital Anxiety and Depression Scale; HR, hazard ratio; IBDQ, Inflammatory Bowel Disease Questionnaire; MTWAI, Modified Truelove and Witts Severity Index; SF36, Short Form (36) Health Survey.

with symptoms of anxiety and depression.<sup>6,44–46,62–64</sup> Our study extends this work to positive affect. High values seem to be not just the absence of depression or anxiety since robust effects of positive affect were observed even after correcting for negative emotions in our multivariable Cox proportional hazard model. Therefore, negative affect (HADS) and positive affect (Marburg questionnaire) may constitute independent components of an overall IBD-relevant

mental state factor, interacting with the gut. Since intestinal inflammation can trigger symptoms of depression and anxiety<sup>6</sup> and recurrence of disease activity was associated with lower scores of positive affect in our study, a bidirectional association between IBD activity and mental state via a gut-brain axis seems likely.<sup>7</sup>

In our study, the absence of various descriptors for pain were the strongest predictors for

high values of reported positive affect. This is not surprising since negative effects of pain on QoL have been previously described,<sup>39,65</sup> parallel to an intimate relationship of pain with depression.<sup>66</sup> Unfortunately, approximately half of IBD patients (49% in UC and 55% in CD) reported pain as a long-standing problem.<sup>39</sup> This emphasizes the necessity for physicians to prioritize the treatment of pain, anxiety and depression for optimal patient care.

The strongest IBD-related variable predicting higher values of positive affect was the absence of EIM, followed by descriptors for treatment, low disease activity and extent of disease. However, IBD characteristics explained a lower fraction of the variance of positive affect compared to pain or psychiatric symptoms. This might be due to adaptation of the IBD patients. Epidemiological research has shown that positive affect is not influenced by life events more than 3 months ago.<sup>67</sup> This indicates temporal stability of positive affect and the presence of an individual set point which will only be transiently affected by positive or negative events.<sup>32,67</sup>

Our study suggests the Marburg questionnaire as a simple psychological assessment tool in IBD patients. All items relate to positive aspects of normal daily life and none of the questions imply psychiatric disease. Therefore, patients might respond more acceptingly since fear of stigmatization due to psychiatric co-morbidity is not relevant. Interventions to directly increase positive emotions have been developed<sup>68</sup>; however, exercises in mindfulness can also strengthen well-being.<sup>69</sup> In IBD patients, mindfulness-based interventions were able to reduce stress and depressive symptoms and improve QoL,<sup>70,71</sup> improve biomarkers of IBD such as faecal calprotectin and c-reactive protein (CRP)<sup>72</sup> but no direct effect on physical symptoms or frequency and severity of flares could be demonstrated.<sup>70,71</sup>

Our approach has several strengths and limitations. Using the extensive dataset of the well-characterized SIBDC patients, we could control for a great variety of confounders and were able to leverage the longitudinal nature of the SIBDC cohort design. Further, our study sheds light on the role of positive affect in IBD which has been understudied so far.

Limitations include the composition of our cohort since SIBDC tends to be biased towards larger centres and patients with more severe disease. Also, the questionnaire assessing positive emotions was filled out only once and the response rate was below 50%. As responders to the questionnaire showed longer disease duration, higher age, higher socioeconomic status and were less anxious and depressed; results could be biased by those differences. Due to limited data in this retrospective study, we were not able to use purely objective measures for intestinal inflammation, such as CRP, calprotectin, or endoscopic measures. We were also not able to control for the effect of negative affect (apart from symptoms of depression and anxiety), since a global mood scale has not been used in the SIBDC. Further, other relevant confounders might have been missed. Finally, since our study is non-interventional, direct and indirect effects of positive emotions cannot be distinguished.

In conclusion, in IBD patients, high values of positive emotions are strongly associated with the absence of depressive symptoms and pain. High scores were associated with longer flare-free episodes in our IBD cohort, independent from psychiatric symptoms and positive emotions might be an important compound of the mental state, interacting with intestinal inflammation via the mental state variable.

## Declarations

### *Ethics approval and consent to participate*

The SIBDC has been approved by the respective local ethics committees in Switzerland and by the lead ethics committee Zurich, Switzerland (institutional review board approval No. EK-1316, approved on 5 February 2007, and KEK Zurich, 9 March 2020; BASEC 2018-02068). All participants provided written informed consent.

### *Consent for publication*

Not applicable.

### *Author contribution(s)*

**Brian M. Lang:** Data curation; Formal analysis; Software; Visualization; Writing – original draft; Writing – review & editing.

**Martina Ledergerber:** Data curation; Formal analysis; Project administration; Visualization; Writing – original draft; Writing – review & editing.

**Sebastian Bruno Ulrich Jordi:** Data curation; Formal analysis; Software; Writing – review & editing.

**Niklas Krupka:** Writing – review & editing.

**Luc Biedermann:** Writing – review & editing.

**Philipp Schreiner:** Writing – review & editing.

**Pascal Juillerat:** Writing – review & editing.

**Jacqueline Wyss:** Writing – review & editing.

**Stephan R. Vavricka:** Conceptualization; Resources; Writing – review & editing.

**Jonas Zeitz:** Data curation; Resources; Writing – review & editing.

**Roland von Känel:** Conceptualization; Supervision; Writing – review & editing.

**Gerhard Rogler:** Conceptualization; Funding acquisition; Resources; Writing – review & editing.

**Niko Beerenwinkel:** Conceptualization; Formal analysis; Software; Validation; Writing – review & editing.

**Benjamin Misselwitz:** Conceptualization; Funding acquisition; Investigation; Methodology; Project administration; Resources; Supervision; Validation; Writing – review & editing.

#### *Acknowledgements*

We would like to thank the patients and the staff of the Swiss IBD cohort study for their commitment.

#### *Funding*

The authors disclosed receipt of the following financial support for the research, authorship, and/or publication of this article: This work was supported by a grant from the Swiss National Science Foundation (SNF) to Gerhard Rogler (the Swiss IBD Cohort) [Grant No. 33CS30-148422].

#### *Competing interests*

BML, ML, SBUJ, NB, NK, JW, RvK and PJ have no competing interests to declare.

LB reports fees for consulting/advisory board from Abbvie, MSD, Vifor, Falk, Esocap, Calypso, Ferring, Pfizer, Shire, Takeda, Janssen, Ewopharma.

PS received consulting fees from Pfizer, Abbvie, Takeda and Janssen-Cilag and travel support from Falk, UCB and Pfizer.

SRV has received consulting fees, speakers honorary and unrestricted research grants from Abbott, Alfasigma, Amgen, Arenapharm, Falk Pharma GmbH, Ferring Pharmaceuticals, Gilead, iQuone, Janssen, MSD, Permamed, Pfizer Inc, Sanofi-Aventis, Takeda, Tillotts, UCB, and Vifor.

JZ reports fees for consulting/advisory board from Abbvie, Janssen and traveling fees from Abbvie, Takeda and Vifor.

GR declares consulting fees from Abbvie, Augurix, BMS, Boehringer, Calypso, Celgene, FALK, Ferring, Fisher, Genentech, Gilead, Janssen, MSD, Novartis, Pfizer, Phadia, Roche, UCB, Takeda, Tillotts, Vifor, Vital Solutions and Zeller; speaker's honoraria from Astra Zeneca, Abbvie, FALK, Janssen, MSD, Pfizer, Phadia, Takeda, Tillotts, UCB, Vifor and Zeller; and grants support from Abbvie, Ardeypharm, Augurix, Calypso, FALK, Flamentera, MSD, Novartis, Pfizer, Roche, Takeda, Tillotts, UCB and Zeller.

BM reports traveling fees from Takeda, Vifor, Gilead and MSD. BM received fees as a speaker from Takeda. BM has served at an advisory board for Gilead, Takeda and BMS. BM has received research grants from MSD and BMS unrelated to the submitted work.

#### *Availability of data and materials*

The data that support the findings of this study are available from the SIBDC. Restrictions apply to the availability of these data, which were used for this study. Upon request and provided that the SIBDC grants permission, data are available from the authors.

#### **ORCID iDs**

Martina Ledergerber  <https://orcid.org/0000-0002-5474-7463>

Luc Biedermann  <https://orcid.org/0000-0003-0824-4125>

### Supplemental material

Supplemental material for this article is available online.

### References

1. Ng SC, Shi HY, Hamidi N, *et al.* Worldwide incidence and prevalence of inflammatory bowel disease in the 21st century: a systematic review of population-based studies. *Lancet* 2017; 390: 2769–2778.
2. Pillai N, Dusheiko M, Maillard MH, *et al.*; Swiss IBD Cohort Study Group. The evolution of health care utilisation and costs for inflammatory bowel disease over ten years. *J Crohn's Colitis* 2019; 13: 744–754.
3. Feagan B, Sandborn WJ, Rutgeerts P, *et al.* Performance of Crohn's disease clinical trial endpoints based upon different cutoffs for patient reported outcomes or endoscopic activity: analysis of EXTEND data. *Inflamm Bowel Dis* 2018; 24: 932–942.
4. Turner D, Ricciuto A, Lewis A, *et al.*; International Organization for the Study of IBD. STRIDE-II: an update on the selecting therapeutic targets in inflammatory bowel disease (STRIDE) initiative of the International Organization for the Study of IBD (IOIBD): determining therapeutic goals for Treat-to-target strategies in IBD. *Gastroenterology* 2021; 160: 1570–1583.
5. Bonaz BL and Bernstein CN. Brain-gut interactions in inflammatory bowel disease. *Gastroenterology* 2013; 144: 36–49.
6. Gracie DJ, Guthrie EA, Hamlin PJ, *et al.* Bi-directionality of Brain-Gut interactions in patients with inflammatory bowel disease. *Gastroenterology* 2018; 154: 1635–1646.e3.
7. Gracie DJ, Hamlin PJ and Ford AC. The influence of the brain-gut axis in inflammatory bowel disease and possible implications for treatment. *Lancet Gastroenterol Hepatol* 2019; 4: 632–642.
8. Cámara RJ, Schoepfer AM, Pittet V, *et al.*; Swiss Inflammatory Bowel Disease Cohort Study (SIBDCS) Group. Mood and nonmood components of perceived stress and exacerbation of Crohn's disease. *Inflamm Bowel Dis* 2011; 17: 2358–2365.
9. Cámara RJ, Juillerat P, Pittet V, *et al.*; Swiss Inflammatory Bowel Disease Cohort Study Group. Quality of life: a potentially useful measure to indicate subclinical flares in Crohn disease. *Intern Med J* 2012; 42: e145–e151.
10. Sun Y, Li L, Xie R, *et al.* Stress triggers flare of inflammatory bowel disease in children and adults. *Front Pediatr* 2019; 7: 432.
11. Bernstein CN. Psychological stress and depression: risk factors for IBD? *Dig Dis* 2016; 34: 58–63.
12. Mawdsley JE and Rampton DS. Psychological stress in IBD: new insights into pathogenic and therapeutic implications. *Gut* 2005; 54: 1481–1491.
13. Bisgaard TH, Allin KH, Keefer L, *et al.* Depression and anxiety in inflammatory bowel disease: epidemiology, mechanisms and treatment. *Nat Rev Gastroenterol Hepatol* 2022; 19: 717–726.
14. D'Mello C and Swain MG. Immune-to-Brain communication pathways in inflammation-associated sickness and depression. *Curr Top Behav Neurosci* 2017; 31: 73–94.
15. Haj-Mirzaian A, Amiri S, Amini-Khoei H, *et al.* Anxiety- and depressive-like behaviors are associated with altered hippocampal energy and inflammatory status in a mouse model of Crohn's disease. *Neuroscience* 2017; 366: 124–137.
16. Heydarpour P, Rahimian R, Fakhfour G, *et al.* Behavioral despair associated with a mouse model of Crohn's disease: role of nitric oxide pathway. *Progr Neuropsychopharmacol biological psychiatry* 2016; 64: 131–141.
17. Ghia JE, Blennerhassett P and Collins SM. Impaired parasympathetic function increases susceptibility to inflammatory bowel disease in a mouse model of depression. *J Clin Invest* 2008; 118: 2209–2218.
18. Ghia J, Blennerhassett P, Deng Y, *et al.* Reactivation of inflammatory bowel disease in a mouse model of depression. *Gastroenterology* 2009; 136: 2280–2288.e1–4.
19. Janke KH, Steder-Neukamm U, Bauer M, *et al.* [Quality of life assessment in inflammatory bowel disease (IBD): German version of the Inflammatory Bowel Disease Questionnaire (IBDQ-D; disease-specific instrument for quality of life assessment) – first application and comparison with international investigations]. *Gesundheitswesen* 2005; 67: 656–664.
20. Ware JE Jr and Sherbourne CD. The MOS 36-item short-form health survey (SF-36). I. Conceptual framework and item selection. *Med Care* 1992; 30: 473–483.

21. Bjelland I, Dahl AA, Haug TT, *et al.* The validity of the hospital anxiety and depression scale. An updated literature review. *J Psychosom Res* 2002; 52: 69–77.
22. Fuller-Thomson E and Sulman J. Depression and inflammatory bowel disease: findings from two nationally representative Canadian surveys. *Inflamm Bowel Dis* 2006; 12: 697–707.
23. Butter M, Weiler S, Biedermann L, *et al.* Clinical manifestations, pathophysiology, treatment and outcome of inflammatory bowel diseases in older people. *Maturitas* 2018; 110: 71–78.
24. Pressman SD, Jenkins BN and Moskowitz JT. Positive affect and health: what do we know and where next should we go? *Annu Rev Psychol* 2019; 70: 627–650.
25. Watson D, Clark LA and Carey G. Positive and negative affectivity and their relation to anxiety and depressive disorders. *J Abnorm Psychol* 1988; 97: 346–353.
26. Denollet J. Negative affectivity and repressive coping: pervasive influence on self-reported mood, health, and coronary-prone behavior. *Psychosom Med* 1991; 53: 538–556.
27. Larsen JT, McGraw AP and Cacioppo JT. Can people feel happy and sad at the same time? *J Pers Soc Psychol* 2001; 81: 684–696.
28. Diener E, Sandvik E and Pavot W. Happiness is the frequency, not the intensity, of positive versus negative affect. In: Diener E (ed.) *Assessing well-being*. Social indicators research series, vol. 39. Dordrecht: Springer, 2009, pp. 213–231.
29. Conference IH. Preamble to the constitution of WHO. In *International Health Conference 19 June–22 July 1946*, New York: Official Records of WHO, 1948, p. 100.
30. Diener E, Pressman SD, Hunter J, *et al.* If, why, and when subjective well-being influences health, and future needed research. *Appl Psychol Health Well Being* 2017; 9: 133–167.
31. Meyer FA, von Känel R, Saner H, *et al.* Positive affect moderates the effect of negative affect on cardiovascular disease-related hospitalizations and all-cause mortality after cardiac rehabilitation. *Eur J Prev Cardiol* 2015; 22: 1247–1253.
32. Diener E, Oishi S and Tay L. Advances in subjective well-being research. *Nat Hum Behav* 2018; 2: 253–260.
33. Ilias T, Bungau S, Tit D, *et al.* Psychosocial profile of the patients with inflammatory bowel disease. *Exp Ther Med* 2020; 20: 2493–2500.
34. Basler HD. [The Marburg questionnaire on habitual health findings—a study on patients with chronic pain]. *Schmerz* 1999; 13: 385–391.
35. Basler HD and Scharfenstein AMFHW. Marburger Fragebogen zum habituellen Wohlbefinden, 1999. <http://www.assessment-info.de/assessment/seiten/datenbank/vollanzeige/vollanzeige-de.asp?vid=411> (accessed 20 October 2018).
36. Nagel B, Gerbershagen HU, Lindena G, *et al.* [Development and evaluation of the multidimensional German pain questionnaire]. *Schmerz* 2002; 16: 263–270.
37. Pittet V, Juillerat P, Mottet C, *et al.*; Swiss IBD Cohort Study Group. Cohort profile: the Swiss inflammatory bowel disease cohort study (SIBDCS). *Int J Epidemiol* 2009; 38: 922–931.
38. Pittet V, Michetti P, Mueller C, *et al.*; Swiss IBD Cohort Study Group. Cohort profile update: the Swiss inflammatory bowel disease cohort study (SIBDCS). *Int J Epidemiol* 2019; 48: 385–386f.
39. Zeitz J, Ak M, Müller-Mottet S, *et al.* Pain in IBD patients: very frequent and frequently insufficiently taken into account. *PLoS One* 2016; 11: e0156666.
40. Biedermann L, Fournier N, Misselwitz B, *et al.* for the Swiss Inflammatory Bowel Disease Cohort Study Group. High rates of smoking especially in female Crohn’s disease patients and low use of supportive measures to achieve smoking Cessation—Data from the Swiss IBD Cohort Study. *J Crohns Colitis* 2015; 9: 819–829.
41. Lang BM, Biedermann L, van Haaften WT, *et al.*; Swiss IBD Cohort Study Group. Genetic polymorphisms associated with smoking behaviour predict the risk of surgery in patients with Crohn’s disease. *Aliment Pharmacol Ther* 2018; 47: 55–66.
42. Best WR, Beckett JM, Singleton JW, *et al.* Development of a Crohn’s disease activity index. National Cooperative Crohn’s Disease Study. *Gastroenterology* 1976; 70: 439–444.
43. Lichtiger S and Present DH. Preliminary report: cyclosporin in treatment of severe active ulcerative colitis. *Lancet* 1990; 336: 16–19.
44. Mikocka-Walus A, Pittet V, Rossel JB, *et al.*; Swiss IBD Cohort Study Group. Symptoms of depression and anxiety are independently associated with clinical recurrence of inflammatory bowel disease. *Clin Gastroenterol Hepatol* 2016; 14: 829–835.e1.

45. Jordi SBU, Lang BM, Auschra B, *et al.* Depressive symptoms predict clinical recurrence of inflammatory bowel disease. *Inflamm Bowel Dis* 2022; 28: 560–571.
46. Jordi SBU, Botte F, Lang BM, *et al.*; Swiss IBD cohort study group. Type D personality is associated with depressive symptoms and clinical activity in inflammatory bowel disease. *Aliment Pharmacol Ther* 2021; 54: 53–67.
47. Schenker N and Gentleman JF. On judging the significance of differences by examining the overlap between confidence intervals. *Am Stat* 2001; 55: 182–186.
48. Friedman J, Hastie T and Tibshirani R. Regularization paths for generalized linear models via coordinate descent. *J Stat Softw* 2010; 33: 1–22.
49. Feldman BE. Relative importance and value. SSRN. DOI: 10.2139/ssrn.2255827
50. Kutner MH, Nachtsheim CJ, Neter J, *et al.* (eds) *Applied linear statistical models*. 5th ed. New York: Springer, 2005.
51. Zhang CH and Zhang SS. Confidence intervals for low-dimensional parameters in high-dimensional linear models, <https://arxiv.org/abs/1110.2563> (accessed 15 August 2021).
52. Dezeure R, Bühlmann P and Zhang CH. High-dimensional simultaneous inference with the bootstrap, <https://arxiv.org/abs/1606.03940> (accessed 15 August 2021).
53. Kaplan EL and Meier P. Nonparametric estimation from incomplete observations. *J Am Stat Assoc* 1958; 53: 457–481.
54. R Core Team. R: A language and environment for statistical computing. R Foundation for Statistical Computing, Vienna, Austria, 2021.
55. Brooks ME, Kristensen K, van Benthem KJ, *et al.* glmmTMB Balances Speed and Flexibility Among Packages for Zero-inflated Generalized Linear Mixed Modeling. *The R Journal* 2017; 9(2): 378–400.
56. Grömping U. Relative importance for linear regression in R: the package relaimpo. *J Stat Softw* 2006; 17: 1–27.
57. von Elm E, Altman DG, Egger M, *et al.* The strengthening the reporting of observational studies in Epidemiology (STROBE) statement: guidelines for reporting observational studies. *Lancet* 2007; 370: 1453–1457.
58. Weber T, Tatzl E, Kashofer K, *et al.* Fibromyalgia-associated hyperalgesia and psychopathological alterations are unrelated to gut microbiome diversity, <https://www.researchsquare.com/article/rs-434221/v1> (accessed 15 August 2021).
59. Steptoe A and Wardle J. Positive affect measured using ecological momentary assessment and survival in older men and women. *Proc Natl Acad Sci USA* 2011; 108: 18244–18248.
60. Steptoe A, Wardle J and Marmot M. Positive affect and health-related neuroendocrine, cardiovascular, and inflammatory processes. *Proc Natl Acad Sci USA* 2005; 102: 6508–6512.
61. Cohen S, Alper CM, Doyle WJ, *et al.* Positive emotional style predicts resistance to illness after experimental exposure to rhinovirus or influenza a virus. *Psychosom Med* 2006; 68: 809–815.
62. Kochar B, Barnes EL, Long MD, *et al.* Depression is associated with more aggressive inflammatory bowel disease. *Am J Gastroenterol* 2018; 113: 80–85.
63. Gaines LS, Slaughter JC, Horst SN, *et al.* Association between affective-cognitive symptoms of depression and exacerbation of Crohn's disease. *Am J Gastroenterol* 2016; 111: 864–870.
64. Gracie DJ, Irvine AJ, Sood R, *et al.* Effect of psychological therapy on disease activity, psychological comorbidity, and quality of life in inflammatory bowel disease: a systematic review and meta-analysis. *Lancet Gastroenterol Hepatol* 2017; 2: 189–199.
65. Jones JL, Nguyen GC, Benchimol EI, *et al.* The impact of inflammatory bowel disease in Canada 2018: Quality of Life. *J Can Assoc Gastroenterol* 2019; 2: S42–S48.
66. IsHak WW, Wen RY, Naghdechi L, *et al.* Pain and depression: a systematic review. *Harv Rev Psychiatry* 2018; 26: 352–363.
67. Suh E, Diener E and Fujita F. Events and subjective well-being: only recent events matter. *J Pers Soc Psychol* 1996; 70: 1091–1102.
68. Shaghghi F, Abedian Z, Forouhar M, *et al.* Effect of positive psychology interventions on psychological well-being of midwives: a randomized clinical trial. *J Educ Health Promot* 2019; 8: 160.
69. Brown KW and Ryan RM. The benefits of being present: mindfulness and its role in psychological well-being. *J Pers Soc Psychol* 2003; 84: 822–848.
70. Ewais T, Begun J, Kenny M, *et al.* A systematic review and meta-analysis of mindfulness based interventions and yoga in inflammatory bowel disease. *J Psychosom Res* 2019; 116: 44–53.



71. Jedel S, Hoffman A, Merriman P, *et al.* A randomized controlled trial of mindfulness-based stress reduction to prevent flare-up in patients with inactive ulcerative colitis. *Digestion* 2014; 89: 142–155.
72. González-Moret R, Cebolla A, Cortés X, *et al.* The effect of a mindfulness-based therapy on different biomarkers among patients with inflammatory bowel disease: a randomised controlled trial. *Sci Rep* 2020; 10: 6071.

## Appendix A

### *Members of the SIBDC study group*

Claudia Anderegg; Peter Bauerfeind; Christoph Beglinger; Stefan Bègré; Dominique Belli; José M. Bengoa; Luc Biedermann; Beat Bigler; Janek Binek; Mirjam Blattmann; Stephan Boehm; Jan Borovicka; Christian P. Braegger; Nora Brunner; Patrick Bühler; Bernard Burnand; Emanuel Burri; Sophie Buyse; Matthias Cremer; Dominique H. Criblez; Philippe de Saussure; Lukas Degen; Joakim Delarive; Christopher Doerig; Barbara Dora; Gian Dorta; Mara Egger; Tobias Ehm; Ali El-Wafa; Matthias Engelmann; Jessica Ezri; Christian Felley; Markus Fliegner; Nicolas Fournier; Montserrat Fraga; Pascal Frei; Remus Frei; Michael Fried; Florian Froehlich; Christian Funk; Raoul Ivano Furlano; Suzanne Gallot-Lavallée; Martin Geyer; Marc Girardin; Delphine Golay; Tanja Grandinetti; Beat Gysi; Horst Haack; Johannes Haarer; Beat Helbling; Peter Hengstler; Denise Herzog; Cyrill Hess; Klaas Heyland; Thomas Hinterleitner; Philippe Hiroz; Claudia Hirschi; Petr Hruz; Rika Iwata; Res Jost; Pascal Juillerat; Vera Kessler Brondolo; Christina

Knellwolf; Christoph Knoblauch; Henrik Köhler; Rebekka Koller; Claudia Krieger-Grübel; Gerd Kullak-Ublick; Patrizia Künzler; Markus Landolt; Rupprecht Lange; Frank Serge Lehmann; Andrew Macpherson; Philippe Maerten; Michel H. Maillard; Christine Manser; Michael Manz; Urs Marbet; George Marx; Christoph Matter; Valérie McLin; Rémy Meier; Martina Mendanova; Christa Meyenberger; Pierre Michetti; Benjamin Misselwitz; Darius Moradpour; Bernhard Morell; Patrick Mosler; Christian Mottet; Christoph Müller; Pascal Müller; Beat Müllhaupt; Claudia Mürger-Beyeler; Leilla Musso; Andreas Nagy; Michaela Neagu; Cristina Nichita; Jan Niess; Natacha Noël; Andreas Nydegger; Nicole Obialo; Carl Oneta; Cassandra Oropesa; Ueli Peter; Daniel Peternac; Laetitia Marie Petit; Franziska Piccoli-Gfeller; Julia Beatrice Pilz; Valérie Pittet; Nadia Raschle; Ronald Rentsch; Sophie Restellini; Jean-Pierre Richterich; Sylvia Rihs; Marc Alain Ritz; Jocelyn Roduit; Daniela Rogler; Gerhard Rogler; Jean-Benoît Rossel; Markus Sagmeister; Gaby Saner; Bernhard Sauter; Mikael Sawatzki; Michela Schäppi; Michael Scharl; Martin Schelling; Susanne Schibli; Hugo Schlauri; Sybille Schmid Uebelhart; Jean-François Schnegg; Alain Schoepfer; Frank Seibold; Mariam Seirafi; Gian-Marco Semadeni; David Semela; Arne Senning; Marc Sidler; Christiane Sokollik; Johannes Spalinger; Holger Spangenberger; Philippe Stadler; Michael Steuerwald; Alex Straumann; Bigna Straumann-Funk; Michael Sulz; Joël Thorens; Sarah Tiedemann; Radu Tutuian; Stephan Vavricka; Francesco Viani; Jürg Vögtlin; Roland Von Känel; Alain Vonlaufen; Dominique Vouillamoz; Rachel Vulliamy; Jürg Wermuth; Helene Werner; Paul Wiesel; Reiner Wiest; Tina Wylie; Jonas Zeitz; Dorothee Zimmermann.

Visit Sage journals online  
journals.sagepub.com/  
home/tag

 Sage journals