



University of  
Zurich<sup>UZH</sup>

Zurich Open Repository and  
Archive

University of Zurich  
University Library  
Strickhofstrasse 39  
CH-8057 Zurich  
[www.zora.uzh.ch](http://www.zora.uzh.ch)

---

Year: 2023

---

## The faunal Ponto-Caspianization of central and western European waterways

Soto, Ismael ; Cuthbert, Ross N ; Ricciardi, Anthony ; Ahmed, Danish A ; Altermatt, Florian ; Schäfer, Ralf B ; Archambaud-Suard, Gaït ; Bonada, Núria ; Cañedo-Argüelles, Miguel ; Csabai, Zoltán ; Datry, Thibault ; Dick, Jaimie T A ; Floury, Mathieu ; Forio, Marie Anne Eurie ; Forcellini, Maxence ; Fruget, Jean-François ; Goethals, Peter ; Haase, Peter ; Hudgins, Emma J ; Jones, J Iwan ; Kouba, Antonín ; Leitner, Patrick ; Lizée, Marie-Hélène ; Maire, Anthony ; Murphy, John F ; Ozolins, Davis ; Rasmussen, Jes Jessen ; Schmidt-Kloiber, Astrid ; Skuja, Agnija ; Stubbington, Rachel ; et al

DOI: <https://doi.org/10.1007/s10530-023-03060-0>

Posted at the Zurich Open Repository and Archive, University of Zurich

ZORA URL: <https://doi.org/10.5167/uzh-253516>

Journal Article

Published Version



The following work is licensed under a Creative Commons: Attribution 4.0 International (CC BY 4.0) License.

Originally published at:

Soto, Ismael; Cuthbert, Ross N; Ricciardi, Anthony; Ahmed, Danish A; Altermatt, Florian; Schäfer, Ralf B; Archambaud-Suard, Gaït; Bonada, Núria; Cañedo-Argüelles, Miguel; Csabai, Zoltán; Datry, Thibault; Dick, Jaimie T A; Floury, Mathieu; Forio, Marie Anne Eurie; Forcellini, Maxence; Fruget, Jean-François; Goethals, Peter; Haase, Peter; Hudgins, Emma J; Jones, J Iwan; Kouba, Antonín; Leitner, Patrick; Lizée, Marie-Hélène; Maire, Anthony; Murphy, John F; Ozolins, Davis; Rasmussen, Jes Jessen; Schmidt-Kloiber, Astrid; Skuja, Agnija; Stubbington, Rachel; et al (2023). The faunal Ponto-Caspianization of central and western European waterways. *Biological Invasions*, 25(8):2613-2629.

DOI: <https://doi.org/10.1007/s10530-023-03060-0>



# The faunal Ponto-Caspianization of central and western European waterways

Ismael Soto · Ross N. Cuthbert · Anthony Ricciardi · Danish A. Ahmed · Florian Altermatt · Ralf B. Schäfer · Gaït Archambaud-Suard · Núria Bonada · Miguel Cañedo-Argüelles · Zoltán Csabai · Thibault Datry · Jaimie T. A. Dick · Mathieu Floury · Marie Anne Eurie Forio · Maxence Forcellini · Jean-François Fruget · Peter Goethals · Peter Haase · Emma J. Hudgins · J. Iwan Jones · Antonín Kouba · Patrick Leitner · Marie-Helène Lizée · Anthony Maire · John F. Murphy · Davis Ozolins · Jes Jessen Rasmussen · Astrid Schmidt-Kloiber · Agnija Skuja · Rachel Stubbington · Gea H. Van der Lee · Rudy Vannevel · Gábor Várбірó · Ralf C. M. Verdonschot · Peter Wiberg-Larsen · Phillip J. Haubrock · Elizabeta Briski

Received: 26 February 2023 / Accepted: 28 March 2023 / Published online: 19 April 2023  
© The Author(s) 2023

**Abstract** As alien invasive species are a key driver of biodiversity loss, understanding patterns of rapidly changing global species compositions depends upon knowledge of invasive species population dynamics and trends at large scales. Within this context, the Ponto-Caspian region is among the most notable

donor regions for aquatic invasive species in Europe. Using macroinvertebrate time series collected over 52 years (1968–2020) at 265 sites across 11 central and western European countries, we examined the occurrences, invasion rates, and abundances of freshwater Ponto-Caspian fauna. We examined whether: (i) successive Ponto-Caspian invasions follow a consistent pattern of composition pioneered by the same species, and (ii) Ponto-Caspian invasion accelerates subsequent invasion rates. In our dataset, Ponto-Caspian macroinvertebrates increased from two species in 1972 to 29 species in 2012. This trend was paralleled by a non-significant increasing trend in the abundances of Ponto-Caspian taxa.

---

Ismael Soto and Ross N. Cuthbert equally contributing first authors.

---

Phillip J. Haubrock and Elizabeta Briski equally contributing senior authors.

---

**Supplementary Information** The online version contains supplementary material available at <https://doi.org/10.1007/s10530-023-03060-0>.

---

I. Soto (✉) · A. Kouba · P. J. Haubrock  
Faculty of Fisheries and Protection of Waters,  
South Bohemian Research Center of Aquaculture  
and Biodiversity of Hydrocenoses, University  
of South Bohemia in České Budějovice, Zátíší 728/II,  
389 25 Vodňany, Czech Republic  
e-mail: isma-sa@hotmail.com

R. N. Cuthbert · E. Briski  
GEOMAR Helmholtz-Zentrum Für Ozeanforschung Kiel,  
24105 Kiel, Germany

R. N. Cuthbert · J. T. A. Dick  
Institute for Global Food Security, School of Biological  
Sciences, Queen's University Belfast, Belfast BT9 5DL,  
UK

A. Ricciardi  
Redpath Museum and Bieler School of Environment,  
McGill University, Montreal, Canada

D. A. Ahmed  
Department of Mathematics and Natural Sciences, Center  
for Applied Mathematics and Bioinformatics (CAMB),  
Gulf University for Science and Technology, Hawally,  
Kuwait

F. Altermatt  
Department of Aquatic Ecology, Eawag: Swiss Federal  
Institute of Aquatic Science and Technology, Überlandstr.  
133, 8600 Dübendorf, Switzerland

Trends in Ponto-Caspian invader richness increased significantly over time. We found a relatively uniform distribution of Ponto-Caspian macroinvertebrates across Europe without any relation to the distance to their native region. The Ponto-Caspian species that arrived first were often bivalves (46.5% of cases),

particularly *Dreissena polymorpha*, followed secondarily by amphipods (83.8%; primarily *Chelicorophium curvispinum* and *Dikerogammarus villosus*). The time between consecutive invasions decreased significantly at our coarse regional scale, suggesting that previous alien establishments may facilitate invasions of subsequent taxa. Should alien species continue to translocate from the Ponto-Caspian region,

F. Altermatt

Department of Evolutionary Biology and Environmental Studies, University of Zurich, Winterthurerstr. 190, 8057 Zurich, Switzerland

R. B. Schäfer

Institute for Environmental Sciences, Quantitative Landscape Ecology, Rhineland Palatinate Technical University, Landau, Germany

G. Archambaud-Suard · M.-H. Lizée

INRAE, Aix Marseille Univ, RECOVER, Aix-en-Provence, France

N. Bonada · M. Cañedo-Argüelles

Grup de Recerca Freshwater Ecology, Hydrology and Management (FEHM), Departament de Biologia Evolutiva, Ecologia i Ciències Ambientals, Facultat de Biologia, Institut de Recerca de la Biodiversitat, Universitat de Barcelona (UB), Diagonal 643, 08028 Barcelona, Catalonia, Spain

M. Cañedo-Argüelles

Institute of Environmental Assessment and Water Research (IDAEA-CSIC), C. Jordi Girona 18-26, 08034 Barcelona, Spain

Z. Csabai

Department of Hydrobiology, University of Pécs, Pécs, Hungary

Z. Csabai

Department of Botany and Zoology, Faculty of Science, Masaryk University, Brno, Czech Republic

T. Datry · M. Forcellini

INRAE, UR RiverLy, Centre de Lyon-Villeurbanne, 5 Rue de la Doua CS70077, 69626 Villeurbanne Cedex, France

M. Floury

Univ Lyon, Université Claude Bernard Lyon 1, CNRS, ENTPE, UMR 5023 LEHNA, 69622 Villeurbanne, France

M. A. E. Forio · P. Goethals · R. Vannevel

Aquatic Ecology Research Group, Ghent University, Coupure Links 653, 9000 Ghent, Belgium

J.-F. Fruget

ARALEP, Ecologie des Eaux Douces, Campus LyonTech-La Doua, 66 Bld Niels Bohr, CS52132, 69603 Villeurbanne Cedex, France

P. Haase

Faculty of Biology, University of Duisburg-Essen, Essen, Germany

P. Haase · P. J. Haubrock

Department of River Ecology and Conservation, Senckenberg Research Institute and Natural History Museum Frankfurt, Gelnhausen, Germany

E. J. Hudgins

Department of Biology, Carleton University, Ottawa, ON K1S 5B6, Canada

J. I. Jones · J. F. Murphy

School of Biological and Behavioural Sciences, Queen Mary University of London, London, UK

P. Leitner · A. Schmidt-Kloiber

Institute of Hydrobiology and Aquatic Ecosystem Management, University of Natural Resources and Life Sciences, Vienna, Austria

A. Maire

EDF R&D, Laboratoire National d'Hydraulique et Environnement, LNHE, 78401 Chatou Cedex, France

D. Ozolins · A. Skuja

Institute of Biology, University of Latvia, Riga, Latvia

J. J. Rasmussen

Norwegian Institute for Water Research (NIVA Denmark), Njalsgade 76, 2300 Copenhagen S, Denmark

R. Stubbington

School of Science and Technology, Nottingham Trent University, Nottingham, UK

G. H. Van der Lee · R. C. M. Verdonschot

Wageningen Environmental Research, Wageningen UR, P.O. Box 47, 6700 AA Wageningen, The Netherlands

G. Várbró

Department of Tisza River Research, Centre for Ecological Research, Institute of Aquatic Ecology, Debrecen 4026, Hungary

P. Wiberg-Larsen

Department of Ecoscience, Aarhus University, Vejlsoevej 25, 8600 Silkeborg, Denmark

our results suggest a high potential for their future invasion success highly connected central and western European waters. However, each species' population may decline after an initial 'boom' phase or after the arrival of new invasive species, resulting in different alien species dominating over time.

**Keywords** Biological invasion · Biotic homogenization · Invasional meltdown · Invasion corridor · Invasive species · Synergistic interaction

## Introduction

Human activities have eroded biogeographical barriers established over geological timescales that separated ecological communities worldwide (Dawson et al. 2017; Duffy et al. 2017; Galil 2011). Rates of invasion by alien species are increasing favored to climate change, global trade and many human activities (Bellard et al. 2013; Seebens et al. 2019). Alien invasive species can impact biotic communities, ecosystem functions, economies and human well-being (Diagne et al. 2021; Gallardo et al. 2019; Russell et al. 2014). Also, they are a major threat to biodiversity across local, regional and global scales (Bellard et al. 2018; IPBES 2019; Pyšek et al. 2020). Thus, it is urgent to understand the processes by which invasions alter biodiversity patterns in an era of rapid environmental change (Ricciardi et al. 2021). The underlying mechanisms that determine the success or failure of invasions vary for each ecosystem but can be related on three factors: introduction to a new range, establishment, and spread (Jeschke and Strayer 2005). Factors influencing invasion success include, among others, dispersal limitation following introduction as species distributions become limited by their own movement abilities (Leuven et al. 2009), propagule (number of released individuals) and colonization pressures (number of released species; Briski et al. 2012a, b; Simberloff 2009), interactions among alien species (Havel et al. 2015), as well as abiotic (e.g. increased water quality and temperature; McLaughlan and Aldridge 2013; Strayer 1999) and biotic factors such as increased frequency of disturbances that reduces native community resilience (Levine et al. 2004; McLaughlan and Aldridge 2013; Strayer 1999), resource availability (e.g.

habitat preferences, construction of artificial habitat; Borza et al. 2017; Mooney 2005) or habitat quality (Früh et al. 2012a, b).

Steeply increasing accumulations of introduced species in various large, urbanized aquatic systems worldwide underline the burgeoning risks and potential drivers of homogenization (Ricciardi 2015; Seebens et al. 2021). This is especially the case for Europe's river network, where connectivity was increased through the opening of the Volga-Don Canal in the 1950s, the Volga-Baltic Canal in the 1960s and the Rhine-Main-Danube (RMD) Canal in 1992, facilitating both active and passive spread of Ponto-Caspian macroinvertebrates through, e.g., hull fouling and ballast along these newly expanded shipping corridors (Bij De Vaate et al. 2002; Gallardo and Aldridge 2015). The connection between the Danube and Rhine basins by the RMD Canal represents one of the three main invasion corridors by which Ponto-Caspian macroinvertebrate species have extended across central and western Europe, including the "killer shrimp" *Dikerogammarus villosus* (Bij de Vaate and Klink 1995), the amphipod *Trichogammarus trichiatus* (Podraza et al. 2001) and the polychaete *Hypania invalida* (Klink and Bij de Vaate 1996).

The Ponto-Caspian region (i.e. Black, Azov and Caspian Seas and their adjacent areas) has been a major donor region for invasions of large parts of Europe (Casties et al. 2016; Cuthbert et al. 2020), with the invasion success of Ponto-Caspian macroinvertebrate species enabled by their broad temperature and salinity tolerances (Casties et al. 2019; Cuthbert and Briski 2021; Paiva et al. 2018; Leuven et al. 2009; Pauli and Briski 2018). Several alien macroinvertebrates from the Ponto-Caspian region have been associated with altered food webs and extirpation of native species (Dick et al. 2002; Folino-Rorem et al. 2009; Kestrup and Ricciardi 2009; Ricciardi and MacIsaac 2000) and some alien macroinvertebrates from the Ponto-Caspian region can display synergistic interactions (e.g. Kobak et al. 2014; Ricciardi 2001; Ricciardi and MacIsaac 2000). Noteworthy macroinvertebrate species in this context are the zebra mussel *Dreissena polymorpha* and the killer shrimp *D. villosus*, which can individually and interactively alter communities, change ecosystem functioning and impact economies (Haubrock et al. 2022a; Kouba et al. 2022; Macêdo et al. 2022) and diminish native

biodiversity (Aldridge et al. 2014; Rewicz et al. 2014; Waterfield, 2009). For example, mussel patches of *D. polymorpha* provide shelter and suitable habitat structure for amphipods, including *D. villosus* (Devin et al. 2003; Ricciardi et al. 1997), which at the same time offer abundant food sources for Ponto-Caspian gobies (Polačik et al. 2009, Gallardo and Aldridge 2015). These synergistic interactions may facilitate the initial establishment of alien invasive species. However, negative relationships in abundance may occur where invaders coexist and compete for the same resources, as shown between *D. polymorpha* and the Caspian mud shrimp *Chelicorophium curvispinum* (Van der Velde et al. 1998). Within this context, we refer to “Ponto-Caspianization” as the phenomenon by which an increasing number of species from the Ponto-Caspian biogeographic region are becoming established in another biogeographic region, with potential impacts on ecosystems (Copilaș-Ciocianu and Šidagytė-Copilas 2022).

Our study investigates the presence of Ponto-Caspian species in central and western Europe over time. For this, we use a comprehensive dataset of macroinvertebrate time series and investigate trends in the distribution of alien species, their population growth and rates of spread, as well as possible underlying mechanisms modulating their establishment success. To our knowledge, this endeavor represents the largest study to investigate the spatio-temporal accumulation of Ponto-Caspian species and their relative abundance, as well as their potential impact. We hypothesized that: (i) the number and dominance (expressed as relative abundances) of Ponto-Caspian macroinvertebrate species across available time series in primarily central and western Europe has increased over time; (ii) there is an inverse relationship between the numbers of these Ponto-Caspian species and the distance to their native ranges; and (iii) Ponto-Caspian macroinvertebrate invasions result in reduced time intervals between successive invasions.

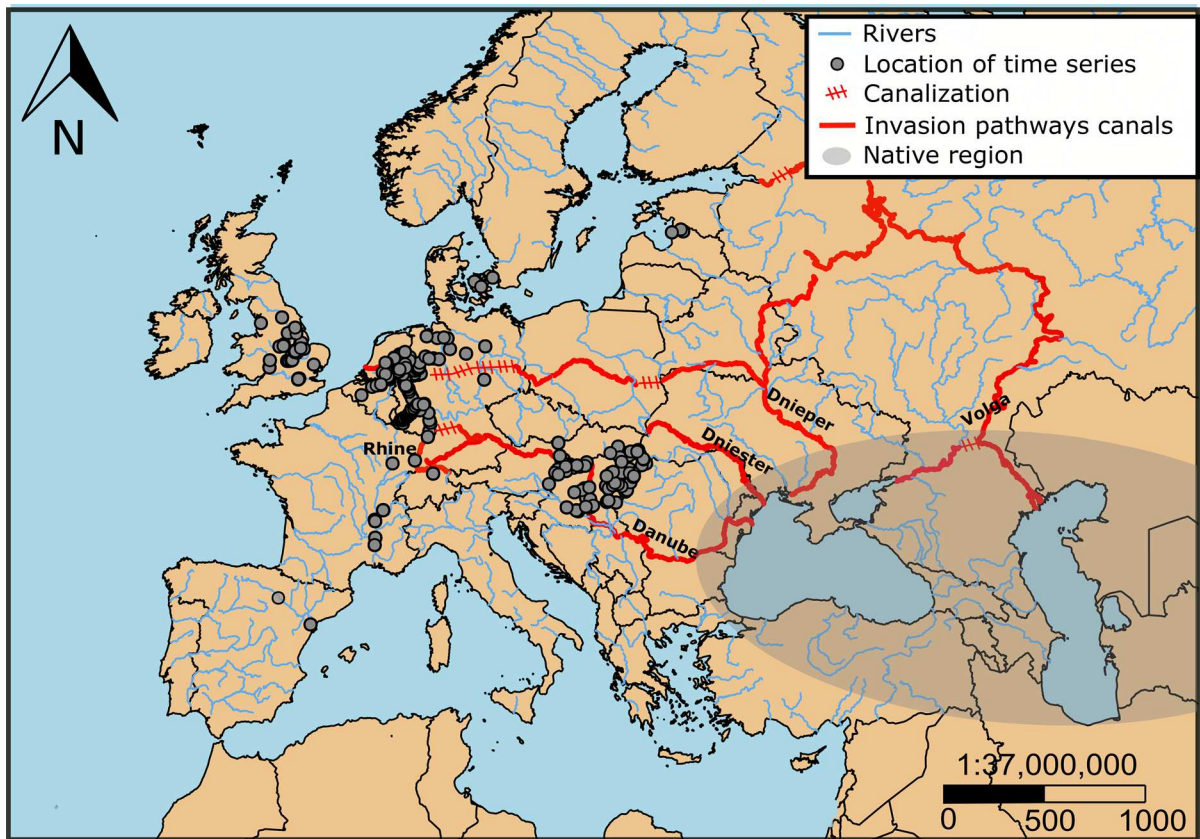
## Methods

### Data collection

To investigate the presence of Ponto-Caspian species in central and western European freshwater streams and rivers, we used a recently collated

database containing 1816 macroinvertebrate time series from 22 European countries (Haase et al. in review; Haubrock et al. 2022b; Soto et al. 2023a). We define the Ponto-Caspian region as the Black, Azov, and Caspian Seas, as well as the adjacent lagoons and lower river stretches (Fig. 1). Each time series contained samples collected in a minimum of eight, not necessarily consecutive, sampling years. Individual time series were sampled from the same geographic location (hereafter, *site*) in all years. Survey methods (e.g. kick sampling) varied among time series, but were kept constant within each time series (Table S1). Each time series was harmonized to have a comparable sampling effort over time, with sampling occurring once annually within three consecutive months and consistent species-level taxonomic resolution. We selected the time series that contained records of Ponto-Caspian macroinvertebrates (Table S2), comprising 265 time series from 11 central and western European countries (Fig. 1; Table S3). We consider central and western Europe geographically but do not refer to the central corridor defined by Bij de Vaate et al. (2002). Data describing communities of native and alien species from eastern Europe and eastern European canals of adequate (i.e. comparable) time length were—to our knowledge—not available. A lack of records of Ponto-Caspian species in a particular country (e.g. Romania, Italy, and Austria) does not imply that it has not been invaded by these species, but may rather indicate a gap in the geographical coverage of our study. Time series of our data set spanned a mean  $\pm$  SD of  $20.9 \pm 9.5$  years and contained  $13.6 \pm 5.4$  sampling years between 1968 and 2020 (Figure S1).

The native range of alien species was confirmed by consulting four sources: *Web of Science* (<https://webofknowledge.com/>), *Google Scholar* (<https://scholar.google.com/>), the *Global Biodiversity Information Facility* (GBIF; <https://www.gbif.org/>) and the *European Network on Invasive Alien Species* (NOBANIS; <https://www.nobanis.org/>). Some of the species in our time series (i.e. *Synurella ambulans* and *Cyrtorchestia garbinii*) are native to both the Ponto-Caspian region, and neighbouring areas (Table S2); these species were kept in the analyses due to the complex geological history of the Ponto-Caspian region (Reid and Orlova 2002; Zenkevitch 1963) and the possibility of cryptogenic status



**Fig. 1** Locations of time series with Ponto-Caspian species in central and western Europe. The shaded area refers to the overarching native region (Ponto-Caspian) considering the Black, Azov and Caspian Seas and their basins, lagoons and lower

river stretches. The thicker red lines represent the main invasion pathways of Ponto-Caspian species (after Bij De Vaate et al. 2002)

(Carlton 2009). We also conducted key analyses without these species and obtained similar results; we thus only present analyses including these species in the main text and present those without them in Supplemental material 2.

Abundance, richness, and accumulation of Ponto-Caspian macroinvertebrates species over time

To test our first hypothesis, i.e. characterize temporal change of Ponto-Caspian macroinvertebrate species across central and western Europe, we conducted a set of meta-regression analyses. Meta-regressions are a powerful tool to synthesize and analyze the results from multiple regressions to evaluate the overall effect (Gurevitch et al. 2018). We constructed a random-effects model assuming sampling variance and

different ‘true’ effects among time series (Nakagawa et al. 2017). For this, we first extracted the effect size (i.e., slope) and variance for every Ponto-Caspian species’ raw abundance occurring over a minimum of 5-years using the Mann–Kendall trend test (*S-Statistic*) to identify monotonic trends (Maire et al. 2019). We used a modified version of the Mann–Kendall trend test to account for temporal autocorrelation (Maire et al. 2019; Pilotto et al. 2020). Furthermore, the magnitude of each effect is weighted based on the accuracy of the estimate, meaning that time series with high temporal resolution and large sample size receive more weight than those with lower precision or smaller sample size (Gurevitch et al. 2018). We performed a meta-regression considering all trends (i.e. *S-Statistic*) and their variance to extract an overall trend and assess its significance. This approach

enables the comparability among time series by analyzing the individual time series abundance trends (i.e., its slope) rather than the raw abundances (Soto et al. 2023b). In order to correct for spatial autocorrelation between time series, we specified the geographic coordinates as a random effect in the meta-regression model based on a Gaussian correlation structure (Cressie 1993; Maire et al. 2019). This approach was applied to all Ponto-Caspian macroinvertebrates combined, and for the key Ponto-Caspian taxa i.e. amphipods, bivalves, and gastropods, individually. These analyses were performed using the *rma.mv* function of the *metafor* R package (version 3.8–1; Viechtbauer 2010). The same approach was repeated using the richness of all Ponto-Caspian species and within each key taxa in place of raw abundances. Due to an insufficient number of Ponto-Caspian bivalves ( $n=2$ ) and gastropods ( $n=1$ ), the meta-regressions were not performed on these taxa.

Additionally, for each time series, we extracted the first recorded occurrence of any alien invasive species, and the first occurrence of each Ponto-Caspian species. We then plotted the cumulative richness as an estimate of invasion rates, using the *stat\_ecdf* function in the *ggplot2* R package (Wickham et al. 2016). This approach allows us to visualize the cumulative number of invasive species that were newly introduced over time and to provide a comprehensive picture of invasion rates in central and western Europe.

### Patterns of Ponto-Caspian invasions

To test our second hypothesis, i.e. the relationship between the numbers of these Ponto-Caspian species and the distance to their native ranges, we assigned Ponto-Caspian macroinvertebrate species to major groups (i.e. Amphipoda, Annelida, Bivalvia, Gastropoda, Hirudinea, Hydrozoa, Isopoda, Mysida, Oligochaeta and Tricladida; Table S2) to identify the presence of potential taxonomic patterns in Ponto-Caspian invasions over time. We first calculated the distance between each site and the Ponto-Caspian region, following the river network (including canals) using the *riverdist* function of *riverdist* R package (Tyers 2022). To standardize distances, we used the Danube delta as the native range for all time series, except for those from Latvia, for which we used the Dnieper delta (Karatayev

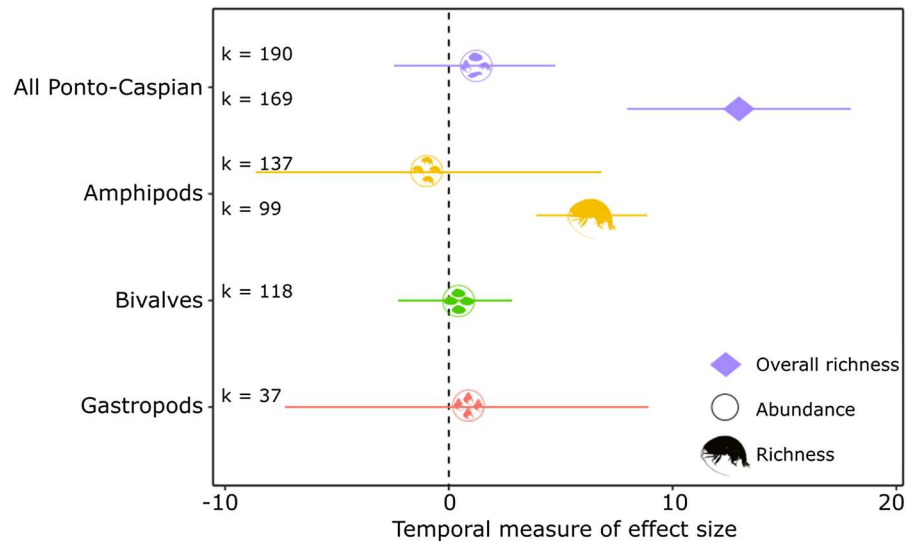
et al. 2008; Lipinskaya et al. 2020) and for those from the United Kingdom, which were calculated following the marine route that connects Great Britain with the Netherlands and subsequently via the invasion corridors along the river networks (Gallardo and Aldridge 2015). Then, we evaluated the relationship between the number of Ponto-Caspian species recorded in each time series and the distance to their native range using Generalized Linear Mixed Models (GLMMs) with negative binomial family using the *glmer* function of the *lme4* R package (Bates et al. 2015). In order to take into account the dependency between observations (i.e. distances to the native region) within each country, we included ‘country’ as a random effect in the GLMMs. We also included the starting year of each time series to account for the potential effect of the heterogeneous database (i.e. disparity in start of time series)

To test our third hypothesis, i.e. if quantifiable changes in invasion rates lead to a reduction in time intervals between successive invasions, we recorded the first year of occurrence (i.e. the first detection) of each species in each time series, noting that detection may not reflect establishment status over time. We then compared the year of the first occurrence of each Ponto-Caspian macroinvertebrate with the most recent preceding year in which another such species appeared in the same time series. To statistically identify the relationship between sequentially occurring Ponto-Caspian species and the time between the arrival of the subsequent Ponto-Caspian species, we used a GLMM with negative binomial distribution and country as a random effect.

### Results

Within the 265 time series spanning the period 1968–2020, we identified 29 Ponto-Caspian macroinvertebrate species. The first records were of the bivalve *Dreissena polymorpha* ( $n=12$  time series) and the amphipod crustacean *Chaetogammarus ischnus* ( $n=1$ ) in 1972 in Germany. The species recorded most frequently across time series were *D. polymorpha* ( $n=164$ ) and the amphipods *Chelicorophium curvispinum* ( $n=146$ ) and *Dikerogammarus villosus* ( $n=132$ ). In contrast, the oligochaete worm *Potamothenix vejovskyi* ( $n=2$ ), the amphipod *Pontogammarus robustoides* ( $n=2$ ), and the mysid *Katamysis*

**Fig. 2** Trends in raw abundance and richness of all Ponto-Caspian species and for each key taxa (i.e. amphipods, bivalves and gastropods) using meta-regression models.  $k$  refers to the number of time series per group

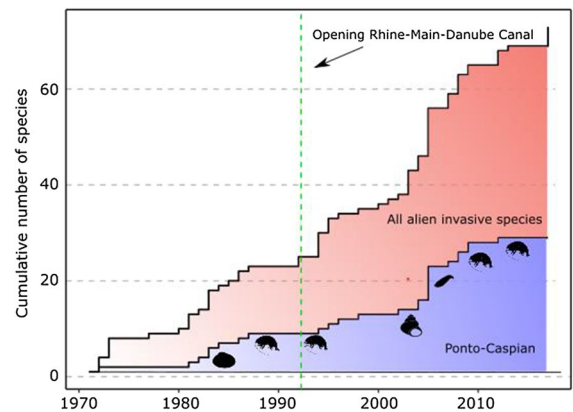


*warpachowskyi* ( $n=3$ ) showed the fewest occurrences (Table S2). Sixty-eight time series contained only one Ponto-Caspian species (25.7%), whereas the highest numbers of Ponto-Caspian species (12, 14, 15, and 16) occurred in four time series from Hungary (Figure S2). In terms of countries, Germany and Hungary had the most Ponto-Caspian macroinvertebrate species (18 and 24, respectively), while the lower number was identified in Spain and Denmark with only one Ponto-Caspian macroinvertebrate.

#### Trends in the abundances and richness of Ponto-Caspian macroinvertebrates

Across all taxa, the raw abundance of Ponto-Caspian taxa slightly increased over time, but not significantly (Temporal Measure of Effect Size  $\pm$  SE:  $= 1.16 \pm 1.84$ ; Fig. 2; Table S4). Also not significantly, within taxa, bivalves (TMES  $\pm$  SE:  $0.27 \pm 1.29$ ; Fig. 2; Table S4), and gastropods increased over time (TMES  $\pm$  SE:  $0.79 \pm 4.14$ ; Fig. 2; Table S4), whereas the raw abundance of amphipods decreased (TMES  $\pm$  SE:  $-0.90 \pm 3.94$ ; Fig. 2; Table S4). In terms of richness, the number of Ponto-Caspian macroinvertebrates increased significantly over time (TMES  $\pm$  SE:  $12.97 \pm 2.54$ ). This trend was supported by an increase of Ponto-Caspian amphipods richness (TMES  $\pm$  SE:  $= 6.38 \pm 1.26$ ; Fig. 2; Table S4).

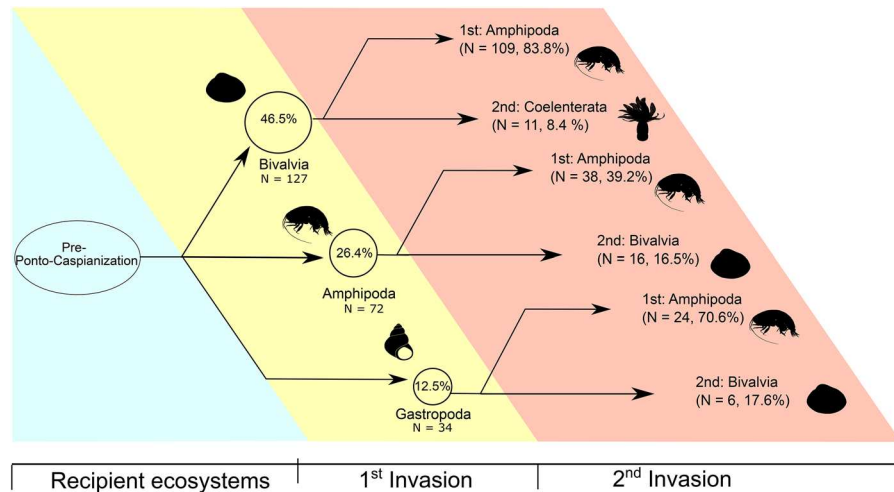
The number of all alien invasive species and Ponto-Caspian species recorded per year as well as



**Fig. 3** The cumulative richness of alien species present in our database (red color) and the cumulative richness of Ponto-Caspian species (blue color) across all time series. The green dashed lines represent the opening of the Rhine-Main-Danube Canal in 1992

Ponto-Caspian cumulative richness increased over time (Fig. 3). The increase of Ponto-Caspian macroinvertebrates was especially marked in 2005, when seven Ponto-Caspian macroinvertebrate species were recorded for the first time, while the last new species (*Niphargus hrabei*) was recorded in 2012. There was no clear pattern in the first occurrence of Ponto-Caspian macroinvertebrate species from different taxonomic orders (Fig. 2b). We identified a significant positive, but weak relationship between the length of the time series and the number of Ponto-Caspian





**Fig. 4** Sequence of arrival of Ponto-Caspian macroinvertebrate orders in central and western European rivers, expressed as the relative prevalence (%) of first and second invasion records of Ponto-Caspian macroinvertebrate orders across available time series. The first orders to invade are highlighted in yellow, while the second orders to arrive after the

first invader are highlighted in red. “Pre-Ponto-Caspianization” refers to the uninvaded state from the Ponto-Caspian donor region. For example, in the first invasion stage, species of Bivalvia constituted 46.5% of the records, which were followed by Amphipoda 83.8% of the time, see Figure S2

macroinvertebrate species ( $R^2=0.09$ ;  $d.f.=263$ ;  $p<0.01$ ; Figure S4).

#### Patterns of Ponto-Caspian macroinvertebrate invasions

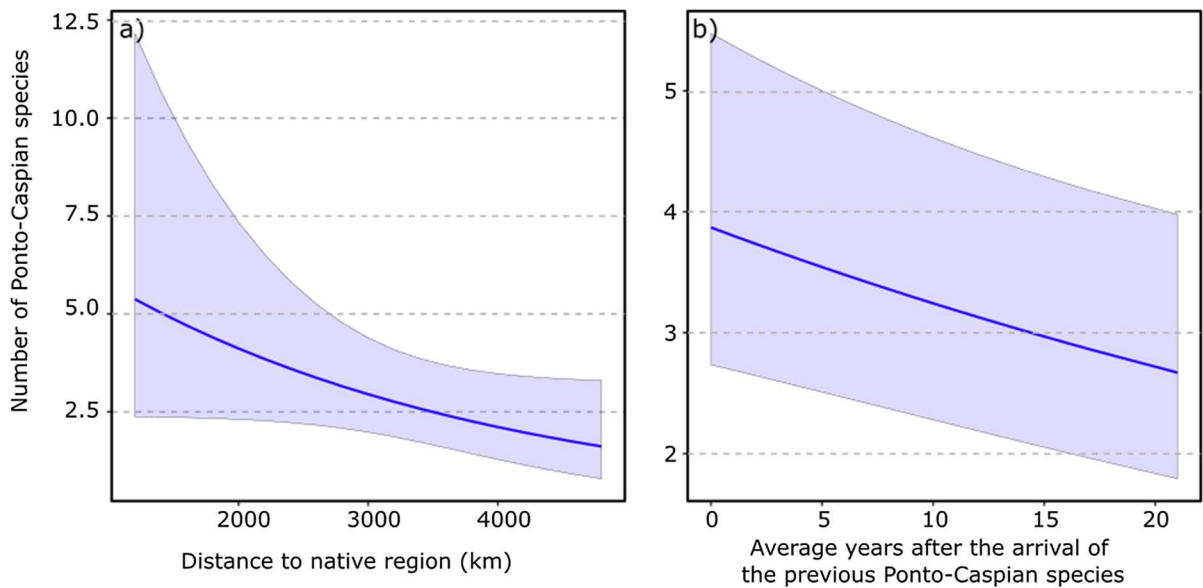
In 46.5% of time series, the bivalve *D. polymorpha* was most frequently the first Ponto-Caspian macroinvertebrate recorded at a site. At sites where *D. polymorpha* was the first Ponto-Caspian species, amphipods were recorded as the second Ponto-Caspian invader in 83.8% of time series, including *C. curvispinum* in 61.7% of cases, and the freshwater hydroid *Cordylophora caspia* was second in 8.46% of cases (Fig. 4; Figure S5). The second most common Ponto-Caspian macroinvertebrates recorded first in a time series were amphipods (26.4%; mostly *C. curvispinum*). Where amphipods were first to establish a presence, we recorded other amphipods (39.2%; primarily *D. villosus*) and the bivalve *D. polymorpha* (16.5%) most often as second invaders. The third most common initial invader was the gravel snail *Lithoglyphus naticoides* (12.5%), which was most often followed by colonising amphipods (70.6%; mostly *C. curvispinum*) and the bivalve *D. polymorpha* (17.6%) (Fig. 4;

Figure S5). Other Ponto-Caspian macroinvertebrate species combined represented < 15% of first arrivals.

We did not find a significant relationship between the number of Ponto-Caspian macroinvertebrate species and the distance to their native region ( $p=0.75$ ; Fig. 5a; Table S5). We found a significant negative relationship between the time to sequentially occurring Ponto-Caspian macroinvertebrates species averaged across all time series and the average number of invading species in each time series ( $p<0.01$ ; Fig. 5b; Table S5). Accordingly, the time between successive invasions decreased with the number of Ponto-Caspian macroinvertebrates species already present (Fig. 5b), from 0 to 21 years until the arrival of the next Ponto-Caspian species.

#### Discussion

Overall, we identified 29 Ponto-Caspian macroinvertebrate species in our European dataset, which is higher than the numbers reported in previous studies (Bij de Vaate et al. 2002; Gallardo and Aldridge 2015; reporting  $n=22$  and 23 species, respectively). However, differences in sampling effort could have created biases and delays in detecting Ponto-Caspian



**Fig. 5** **a** Relationships between the average distance to the Ponto-Caspian region and the number of Ponto-Caspian macroinvertebrate species per time series. **b** Relationship between

the averaged difference in years of sequentially detected Ponto-Caspian macroinvertebrate species per time series and the number of such species per time series

macroinvertebrates at local and regional scales, particularly as the available time series began at variable times relative to actual invasion histories (Aikio et al. 2012; Dawson et al. 2017). The countries represented in our dataset were between 1312 and 4670 km away from the Ponto-Caspian region, whereas several countries were not covered by our data (e.g. Russian Federation, Romania, Bulgaria, Ukraine, Italy, Belarus, Ireland). The vast majority of the Ponto-Caspian macroinvertebrates recorded were found in countries through which the Rhine-Main-Danube (RMD) canal flows (e.g. Hungary and Germany, whose exclusion did not affect the direction of identified trends; Supplementary Material 2). There are two other invasion corridors in Europe, i.e. the southern and the central invasion corridors, connecting the Ponto-Caspian region to other countries (e.g. Latvia; Bij de Vaate et al. 2002; Morton 1997). Although the presence of many Ponto-Caspian macroinvertebrates has been facilitated across these two corridors (see e.g. Jazdzewski et al. 2004; Grabowski et al. 2006; Son 2019), we were unable to identify any suitable (i.e. comparable and sufficiently long) time series data containing entire macroinvertebrate communities from either corridor. However, the included time series contained records of Ponto-Caspian macroinvertebrates in

countries unconnected to the main invasion corridors (Spain and the United Kingdom). Invasion of these countries could neither be facilitated by inland water navigation or instream movement of species, but possibly introduced through ballast water of ocean shipping (Binimelis et al. 2007; Gallardo and Aldridge 2015).

Confirming our first hypothesis, we observed a significant increase in the trend of Ponto-Caspian macroinvertebrate species reporting. This increase approximately followed a sigmoid (S-shaped) growth curve (see Fig. 2a; Haubrock et al. 2022b; Kot 2001; Simpson et al. 2022). Although based on correlation and not causation, the steep incline of Ponto-Caspian macroinvertebrates in the years following the opening of the RMD Canal in 1992 (Vučković et al. 2021) suggests that it acted as a primary invasion corridor to countries where it passes through (Leuven et al. 2009). A plateau stage followed this trend later, with only a single new Ponto-Caspian macroinvertebrate species (the amphipod *N. hrabei*) recorded since 2012. The increasing number of Ponto-Caspian species could, however, also be linked to increasing degradation of natural habitats, as several Ponto-Caspian crustaceans have been shown to benefit from an increasing presence of artificial hard substrates

(Borza et al. 2017). The relevance of degradation compared to facilitative biotic interactions, or their potential synergy, remains to be disentangled in future empirical studies. Nevertheless, we found that the number of Ponto-Caspian species was affected by the number of time series in each sampling year, indicating that the saturation observed in recent years likely reflects the reduced number of sampled sites in the most recent years (i.e. 2015–2019). Additionally, a lag time in reporting could have influenced observed trends, despite potential increases in invasive species propagule or colonization pressures.

In combination with the increase in the number of Ponto-Caspian species over time, we observed a slight increase in the abundance trend of Ponto-Caspian species in central and western Europe. This increase was also supported by trends within bivalves and gastropods (albeit represented entirely by *L. naticoides*), which are well-represented in our dataset. Ponto-Caspian amphipod invader trends, however, decreased over time (albeit non-significantly), highlighting that changes over time manifest differently among taxa. This phenomenon can also be observed in the North American Great Lakes, where Ponto-Caspian fishes and invertebrates have become dominant components of food webs (Ricciardi 2001; Vanderploeg et al. 2002); they comprise >30% of the alien species established in the past few decades—the highest rate of introduction for this group of taxa recorded in the basin's history (Ricciardi 2006). This increase could be explained by a myriad of factors, such as the increase in colonization and propagule pressures driven by the ongoing construction of shipping canals, human modification of rivers, as well as deliberate introductions into human-altered waters (Bij de Vaate et al. 2002; Cassey et al. 2018; MacIsaac et al. 2001) and dynamics and frequency of shipping transits (Capinha et al. 2015; Seebens et al. 2016). In addition, the complex geological history of the Ponto-Caspian region during previous glacial cycles could make these taxa predisposed to invade heterogeneous environments, characterized by broad temperature and salinity gradients (Paiva et al. 2018; Reid and Orlova 2002). The increase of Ponto-Caspian macroinvertebrate trends was mostly driven by bivalves (mostly *D. polymorpha*). We, however, did not span all of its invasion history in Europe (Karatayev and Burlakova 2022), being first recorded in 1847 in France (Kinzelbach 1992) or 1820 in England (CABI

2023). Comparably, gastropod trends—albeit covering only one third of the duration of the other two groups—were found to be increasing, thus possibly being in the boom-phase of a central and western European-wide invasion dynamic (Strayer et al. 2017). This indicates specifically that *L. naticoides* populations might still be expanding across European waterways, posing a higher invasion risk in the near future. In contrast, amphipods exhibited a decreasing albeit non-significant trend, suggesting that may have surpassed the bust-phase of typical invasion dynamics (Strayer et al. 2017).

The present study found that, in many of our time series, the most dominant Ponto-Caspian invader was the bivalve *D. polymorpha*, followed by amphipods. *D. polymorpha* is one of the most successful invaders in Europe due to unique traits, such as a high tolerance to temperature, salinity or pollution, as well as a high fecundity and survival rate during long distance travel (Karatayev and Burlakova 2022; Orlova 2002). Substantial evidence indicates that “ecosystem engineers” such as *D. polymorpha* exhibit a positive relationship with various amphipods (Kobak and Żytkowicz 2007; MacNeil et al. 2010; Gallardo and Aldridge 2015). *Dreissena polymorpha* shells provide refuge from predators to amphipods (e.g. *C. ischnus*; Kobak et al. 2014). In addition, amphipods preferentially settle on habitat structures formed by *D. polymorpha* in the presence of other suitable substrata (Kobak et al. 2013). The absence of experimental data prevents our identification of direct facilitative relationships between Ponto-Caspian macroinvertebrates, although these have been examined in other studies (Kobak and Żytkowicz 2007; Kobak et al. 2014; Ricciardi 2001; Vanderploeg et al. 2002; Gallardo and Aldridge 2015). In addition, the observed pattern could be partly also attributed to the greater ecological importance of bivalves and crustaceans than other taxa such as insects in aquatic ecosystems (Sendek et al. 2022).

The order of recorded arrivals of Ponto-Caspian macroinvertebrates may reflect their ability to actively migrate long distances and to passively hitchhike in ballast tanks, as well as their ability to benefit from already established Ponto-Caspian species (Berezina 2007; Bacela-Spychalska et al. 2013; Gallardo and Aldridge 2015; Kobak et al. 2009). *Chelicorophium curvispinum* was the first amphipod to colonize all newly constructed invasion corridors (Grabowski

et al. 2007; Labat et al. 2011) and, as such, was the first amphipod to invade Europe according to our study. *Chelicorophium curvispinum* shows a strong relationship with *D. villosus*: both species were present in 163 of 198 time series with > 1 Ponto-Caspian species (82.32%). The third most common Ponto-Caspian macroinvertebrate in our data was the gastropod snail *L. naticoides*, which is suspected to have spread through the RMD Canal as far as the Netherlands (Bij De Vaate et al. 2002). The differences in order of arrival may be explained by (i) trait differences that promote rapid invasion success (e.g. a high intrinsic rate of population growth, asexual reproduction; Casties and Briski 2019; Pauli and Briski 2018), (ii) differences in population densities that reflect species habitat preferences (e.g. Ponto-Caspian mysids such as *Hemimysis anomala* are more commonly found in lakes; Kipp and Ricciardi 2007), (iii) the variable start and end dates of time series and (iv) delays in detection and reporting of new introduced alien species at regional and local scales (e.g. they are commonly longer for cryptic species). Also, it is important to note that some widespread species were established in Europe before our first time series began in 1972. This is the case of *D. polymorpha*, which was introduced into and linked to spread across lentic systems in Germany in the early 1800s, the Netherlands and Belgium in 1826 (Kearney and Morton 1970; Minchin et al. 2002; Seebens et al. 2020), and Denmark in 1840 (Mandahl-Barth 1949).

Contrary to our second hypothesis, we did not observe a difference in the number of detected Ponto-Caspian macroinvertebrate species with increasing distance to the Ponto-Caspian region. This substantiates the enormous invasive potential and the threat to biodiversity presented by Ponto-Caspian macroinvertebrates (e.g. *D. polymorpha*). There are many factors which may explain successful invasion rates, such as high reproductive rates, as well as wide environmental and euryhaline tolerances (Reid and Orlova 2002). These factors in combination with ongoing ecosystem disturbances (e.g. construction of dams) and human activities (e.g. trade intensification) considerably increase the invasion opportunities for these species (Hulme 2021). In addition, it is expected that the number of Ponto-Caspian invasive species will increase in the future with the emergence of new “waves” of invaders from this prominent region (Borza et al. 2017), emphasizing the urgent need for

the implementation of control measures to mitigate future impacts (Gallardo and Aldridge 2015; Borza et al. 2017). Indeed, we found a significant increase in richness trends for Ponto-Caspian invaders in the present study, suggesting a further rise in their invasion rates in future.

Changing invasion rates may also be driven by interactions among alien species and the successful establishment of further alien species, which may produce more propagules that enhance downstream propagule pressure. Boom-bust dynamics are also commonly observed in alien invasive species (Haubrock et al. 2022a; Strayer et al. 2017), characterized by exponential population growth, followed by a moderate decline in abundance (Sofaer et al. 2018). Accordingly, as a suite of invasions occurs over time, a newly introduced alien species could ‘boom’ as an established one declines in the ‘bust’ phase, potentially causing a negative, albeit non-causal, correlation. The high risk of invasion from a particular donor region, such as the Ponto-Caspian region, has been described to follow “waves” of invasion where subsequent invaders are replacing each other (Stepien and Tumeo 2006). The observed decrease in the interval between successive introductions could indicate a higher probability for the next alien species to establish, driven potentially through facilitation among co-evolved species that promotes establishment, but not necessarily proliferation (Gallardo and Aldridge 2015; Ricciardi 2001). In accordance with the invasional meltdown (Simberloff 2006; Simberloff and Von Holle 1999) and our third hypothesis presuming reduced time intervals between successive invasions, our results could be explained by synergistic facilitations among Ponto-Caspian macroinvertebrates (possibly through changes in physical habitat structure, community structure or resources) that accelerated the rate of invasion and possibly increased their impact upon recipient communities (Guareschi et al. 2021; Ricciardi 2001; Simberloff and Von Holle 1999). Yet, due to the persistent lack of suitable real-world long-term biodiversity data, documented evidence of interactions between alien species is limited (Gallardo and Aldridge 2015; but see Johnson et al. 2009; Kobak et al. 2013, 2014; Metz et al. 2018) and we cannot confirm the existence of facilitation processes. Nevertheless, it is well known that the replacement of a native species (e.g. of *Gammarus pulex* by the alien *D. villosus* in the Netherlands; MacNeil and Platvoet

2005) could free up niche space and increase the invasibility of an ecosystem (Haubrock et al. 2021), reducing its biotic resistance and potentially triggering an invasional meltdown (De Rivera et al. 2005; Gallardo and Aldridge 2015; Hui et al. 2016), thereby being a driver of biotic homogenization (La Sorte et al. 2007). Thus, although only 5–20% of established species develop harmful impacts (Williamson and Griffiths 1996), the observed gradual increase in the number of Ponto Caspian species across Europe contributes to the major concern of global change and biodiversity loss (Iacarella et al. 2015; Olden and Poff 2004).

## Outlook

Potential drivers of an increasing invasion rate are multifaceted and include (i) higher colonization pressure, (ii) increased disturbance (disrupting biotic resistance; Dar and Reshi 2014; Olden and Rooney 2006) and (iii) facilitation (Byers and Noonburg 2003; Green et al. 2011; Lockwood et al. 2009). Due to the presence of existing and emerging Ponto-Caspian macroinvertebrates in Europe (Baars et al. 2022; Lucy et al. 2020) and considering the lag time in the detection and reporting alien invasive species, our identified number of Ponto-Caspian macroinvertebrate species is likely a conservative estimate (Bij de Vaate et al. 2002). Additionally, including other well-known Ponto-Caspian groups, such as fish species (e.g. the round goby *Neogobius melanostomus*) already widespread in Europe, makes this Ponto-Caspianization even more prominent (Le Hen et al. 2023). Accordingly, there are a variety of potential explanations for the increase of Ponto-Caspian fauna in Europe, including Europe's history of canal-building and asymmetric interactions among introduced species with the initial invader facilitating the subsequent invader at the potential cost of its own population growth rate. While it remains difficult to predict future invasion rates, even for prominent groups with a notorious origin such as the Ponto-Caspian region, increasing invasion rates due to 'stepping-stones' from previously invaded areas (Bertelsmeier and Ollier 2021) are also expected (Seebens et al. 2018). The steep increase in Ponto-Caspian invaders in recent decades highlights the need for coordinated efforts to slow further spread and to manage already established invader populations. Without such

management intervention, biological invasions from the Ponto Caspian region could ultimately reshape the entire continental aquatic community over time. Strict control of the vectors of introduction and spread of alien species, such as aquaria and garden ornamentation stores (Dickey et al. 2023), ship ballast and ship and recreation boat hulls (Sylvester and MacIsaac 2010; Briski et al. 2012b; Kelly et al. 2013), and increased sampling efforts that promote earlier detection of alien species (e.g. via eDNA methods; Thomas et al. 2020), together with sharing information between governments and stakeholders are needed for effective management. There should be a focus on prevention and control of biological invasions in the current contexts of globalization, global change and accelerating rates of species introductions.

**Acknowledgements** This study was supported by the Grant Agency of the University of South Bohemia, project number 065/2022/Z. R.N.C. acknowledges funding from the Leverhulme Trust Early Career Fellowship (ECF-2021-001). We also acknowledge Flanders Environment Agency for providing the publicly available data. P.H. and P.J.H. received funding from the EU Horizon 2020 project eLTER PLUS (Grant Agreement No. 871128). NB and MC were supported by the Serra-Hunter programme (Generalitat de Catalunya). MC was also supported by a Ramón y Cajal contract funded by the Spanish Ministry of Science and Innovation (RYC2020-029829-I). NB was also supported by the H2020 European Research and Innovation action Grant Agreement no. 869226 (DRYvER). The FEHM (Freshwater Ecology, Hydrology and Management) research group (to which NB and MC belong) was funded by the "Agència de Gestió d'Ajuts Universitaris i de Recerca" (AGAUR) at the "Generalitat de Catalunya" (2017SGR1643). BG was funded through the 2017–2018 Belmont Forum and BIODIVERSA joint call for research proposals, under the BiodivScen ERANet COFUND programme, funded through the Spanish State Research Agency (MCI/AEI/FEDER, UE, PCI2018-092986).

**Author contributions** IS, RC: Methodology, Formal analysis, Data Curation, Writing—Original Draft, Writing—review & editing. AR, DA: Conceptualization, Writing—Original Draft. FA, GA, NB, MC, ZC, TD, JD, MF, MAEF, MF, JF, PG, EH, IJ, AK, PL, ML, AM, JM, DO, JR, RS, AS, RBS, GV, RV, GV, RV, PWL: Resources, Writing—Review & Editing. PH: Funding and data acquisition, Writing—Review & Editing Administration. PJH, EB: Conceptualization, Supervision, Writing—original draft; Writing—review & Editing.

**Funding** Open access publishing supported by the National Technical Library in Prague.

**Data availability** The data underlying this study will be made available upon reasonable request. Requests for data should be directed to Ismael Soto (Isma-sa@hotmail.com).

## Declarations

**Competing interests** The authors have no relevant financial or non-financial interests to disclose.

**Open Access** This article is licensed under a Creative Commons Attribution 4.0 International License, which permits use, sharing, adaptation, distribution and reproduction in any medium or format, as long as you give appropriate credit to the original author(s) and the source, provide a link to the Creative Commons licence, and indicate if changes were made. The images or other third party material in this article are included in the article's Creative Commons licence, unless indicated otherwise in a credit line to the material. If material is not included in the article's Creative Commons licence and your intended use is not permitted by statutory regulation or exceeds the permitted use, you will need to obtain permission directly from the copyright holder. To view a copy of this licence, visit <http://creativecommons.org/licenses/by/4.0/>.

## References

- Aikio S, Duncan RP, Hulme PE (2012) The vulnerability of habitats to plant invasion: disentangling the roles of propagule pressure, time and sampling effort. *Glob Ecol Biogeogr* 21(8):778–786
- Aldridge DC, Ho S, Froufe E (2014) The Ponto-Caspian quagga mussel, *Dreissena rostriformis bugensis* (Andrusov, 1897), invades Great Britain. *Aquat Invasions* 9(4):529–535
- Bacela-Spychalska K, Grabowski M, Rewicz T, Konopacka A, Wattier R (2013) The ‘killer shrimp’ *Dikerogammarus villosus* (Crustacea, Amphipoda) invading Alpine lakes: overland transport by recreational boats and scuba-diving gear as potential entry vectors? *Aquat Conserv Mar Freshwat Ecosyst* 23(4):606–618
- Bates D, Kliegl R, Vasishth S, Baayen H (2015) Parsimonious mixed models. arXiv preprint [arXiv:1506.04967](https://arxiv.org/abs/1506.04967)
- Bellard C, Thuiller W, Leroy B, Genovesi P, Bakkenes M, Courchamp F (2013) Will climate change promote future invasions? *Glob Change Biol* 19(12):3740–3748
- Bellard C, Jeschke JM, Leroy B, Mace GM (2018) Insights from modeling studies on how climate change affects invasive alien species geography. *Ecol Evol* 8(11):5688–5700
- Baars JR, Caplice MB, Flynn O, Swanwick H, Minchin D (2022) The Ponto-Caspian quagga mussel, *Dreissena rostriformis bugensis* Andrusov, 1897, is established in Ireland. *BioInvasions Rec* 11(1):173–180
- Berezina NA (2007) Invasions of alien amphipods (Amphipoda: Gammaridea) in aquatic ecosystems of North-Western Russia: pathways and consequences. *Hydrobiologia* 590(1):15–29
- Bertelsmeier C, Ollier S (2021) Bridgehead effects distort global flows of alien species. *Divers Distrib* 27(11):2180–2189
- Bij de Vaate A, Jazdzewski K, Ketelaars HAM, Gollasch S, van der Velde G (2002) Geographical patterns in range extension of Ponto-Caspian macroinvertebrate species in Europe. In: *Canadian Journal of Fisheries and Aquatic Sciences*, pp 1159–1174
- Bij de Vaate A, Klink AG (1995) *Dikerogammarus villosus* Sowinsky (Crustacea: Gammaridae) a new immigrant in the Dutch part of the Lower Rhine. *Lauterbornia* 20:51–54
- Binimelis R, Iliana AE, Ae M, Rodríguez-Labajos B (2007) A Social Analysis of the Bioinvasions of *Dreissena Polymorpha* in Spain and *Hydrilla Verticillata* in Guatemala. *Environ Manag* 40(4):555–566
- Briski E, Bailey SA, Casas-Monroy O, DiBacco C, Kaczmarzka I, Levings C et al (2012a) Relationship between propagule pressure and colonization pressure in invasion ecology: a test with ships’ ballast. *Proc R Soc B Biol Sci* 279(1740):2990–2997
- Briski E, Ghabooli S, Bailey SA, MacIsaac HJ (2012b) Invasion risk posed by macroinvertebrates transported in ships’ ballast tanks. *Biol Invasions* 14:1843–1850
- Borza P, Huber T, Leitner P, Remund N, Graf W (2017) Success factors and future prospects of Ponto-Caspian peracarid (Crustacea: Malacostraca) invasions: Is ‘the worst over’? *Biol Invasions* 19(5):1517–1532
- Byers JE, Noonburg EG (2003) Scale dependent effects of biotic resistance to biological invasion. *Ecology* 84(6):1428–1433
- CABI (2023) CABI Compendium. CAB International, Wallingford, UK
- Carlton JT (2009) Deep invasion ecology and the assembly of communities in historical time. In: Rilov G, Crooks JA (eds) *Biological invasions in marine ecosystems*. Springer, Berlin Heidelberg
- Cassey P, Delean S, Lockwood JL, Sadowski JS, Blackburn TM (2018) Dissecting the null model for biological invasions: a meta-analysis of the propagule pressure effect. *PLoS Biol* 16(4):e2005987
- Casties I, Clemmesen C, Briski E (2019) Environmental tolerance of three gammarid species with and without invasion record under current and future global warming scenarios. *Divers Distrib* 25:603–612
- Casties I, Briski E (2019) Life history traits of aquatic non-indigenous species: freshwater versus marine habitats. *Aquat Invasions* 14(4):566–581
- Casties I, Seebens H, Briski E (2016) Importance of geographic origin for invasion success: a case study of the North and Baltic Seas versus the Great Lakes-St. Lawrence River region. *Ecol Evol* 6(22):8318–8329
- Capinha C, Essl F, Seebens H, Moser D, Pereira HM (2015) The dispersal of alien species redefines biogeography in the Anthropocene. *Science* 348(6240):1248–1251
- Copilaş-Ciocianu D, Şidagytë-Copilaş E (2022) A substantial range expansion of alien Ponto-Caspian amphipods along the eastern Baltic Sea coast. *Oceanologia* 64(1):227–232
- Cressie NAC (1993) *Statistics for spatial data*. J. Wiley & Sons, New York
- Cuthbert RN, Briski E (2021) Temperature, not salinity, drives impact of an emerging invasive species. *Sci Total Environ* 780:146640
- Cuthbert RN, Kotronaki SG, Dick JTA, Briski E (2020) Salinity tolerance and geographical origin predict global alien amphipod invasions. *Biol Lett* 16(9):20200354

- Dar PA, Reshi ZA (2014) Components, processes and consequences of biotic homogenization: a review. *Contemp Probl Ecol* 7(2):123–136
- Dawson W, Moser D, van Kleunen M, Kreft H, Pergl J, Pyšek P, Weigelt P, Winter M, Lenzner B, Blackburn TM, Dyer EE, Cassey P, Scrivens SL, Economo EP, Guénard B, Capinha C, Seebens H, García-Díaz P, Nentwig W et al (2017) Global hotspots and correlates of alien species richness across taxonomic groups. *Nat Ecol Evol* 1:0186
- De Rivera CE, Ruiz GM, Hines AH, Jivoff P (2005) Biotic resistance to invasion: native predator limits abundance and distribution of an introduced crab. *Ecology* 86(12):3364–3376
- Devin S, Piscart C, Beisel JN, Moreteau JC (2003) Ecological traits of the amphipod invader *Dikerogammarus villosus* on a mesohabitat scale. *Arch Hydrobiol* 158(1):43–56
- Dick JT, Platvoet D, Kelly DW (2002) Predatory impact of the freshwater invader *Dikerogammarus villosus* (Crustacea: Amphipoda). *Can J Fish Aquat Sci* 59(6):1078–1084
- Diagne C, Leroy B, Vaissière AC, Gozlan RE, Roiz D, Jarić I, Salles JM, Bradshaw CJA, Courchamp F (2021) High and rising economic costs of biological invasions worldwide. *Nature* 592(7855):571–576
- Dickey JW, Brennan RS, Chung SSW, Jeschke JM, Steffen GT, Briski E (2023) More than we bargained for: Zebra mussels transported amongst European native freshwater snails. *NeoBiota* 83:1–10
- Duffy GA, Coetzee BWT, Latombe G, Akerman AH, McGeoch MA, Chown SL (2017) Barriers to globally invasive species are weakening across the Antarctic. *Divers Distrib* 23(9):982–996
- Folino-Rorem NC, Darling JA, Cori A, D'Ausilio A (2009) Genetic analysis reveals multiple cryptic invasive species of the hydrozoan genus *Cordylophora*. *Biol Invasions* 11(8):1869–1882
- Früh D, Stoll S, Haase P (2012a) Physicochemical and morphological degradation of stream and river habitats increases invasion risk. *Biol Invasions* 14(11):2243–2253
- Früh D, Stoll S, Haase P (2012b) Physico-chemical variables determining the invasion risk of freshwater habitats by alien mollusks and crustaceans. *Ecol Evol* 2(11):2843–2853
- Galil BS (2011) The alien crustaceans in the Mediterranean Sea: an historical review. In: the wrong place-alien marine Crustaceans: distribution, biology and impacts, pp 377–401
- Gallardo B, Aldridge DC (2015) Is Great Britain heading for a Ponto-Caspian invasional meltdown? *J Appl Ecol* 52(1):41–49
- Gallardo B, Bacher S, Bradley B, Comín FA, Gallien L, Jeschke JM, Cascade CJ, Vilà M (2019) InvasiBES: understanding and managing the impacts of invasive alien species on biodiversity and ecosystem Services. *NeoBiota* 50:109–122
- Grabowski M, Jazdzewski K, Konopacka A (2007) Alien crustacea in Polish waters—Amphipoda. *Aquat Invasions* 2(1):25–38
- Grabowski M, Konopacka A, Jazdzewski K, Janowska E (2006) Invasions of alien gammarid species and retreat of natives in the Vistula Lagoon (Baltic Sea, Poland). *Helgol Mar Res* 60(2):90–97
- Green PT, O'Dowd DJ, Abbott KL, Jeffery M, Retallick K, Mac Nally R (2011) Invasional meltdown: invader–invader mutualism facilitates a secondary invasion. *Ecology* 92(9):1758–1768
- Guareschi S, Laini A, England J, Barrett J, Wood PJ (2021) Multiple co-occurrent alien invaders constrain aquatic biodiversity in rivers. *Ecol Appl* 31(6):e02385
- Gurevitch J, Koricheva J, Nakagawa S, Stewart G (2018) Meta-analysis and the science of research synthesis. *Nature* 555(7695):175–182
- Haubrock PJ, Pilotto F, Innocenti G, Cianfanelli S, Haase P (2021) Two centuries for an almost complete community turnover from native to non-native species in a riverine ecosystem. *Glob Change Biol* 27(3):606–623
- Haubrock PJ, Cuthbert RN, Ricciardi A, Diagne C, Courchamp F (2022a) Economic costs of invasive bivalves in freshwater ecosystems. *Divers Distrib* 28(5):1010–1021
- Haubrock P, Ahmed DA, Cuthbert RN, Stubbington R, Domisch S et al (2022b) Invasion impacts and dynamics of a European-wide introduced species. *Glob Change Biol* 28:4620–4632
- Havel JE, Kovalenko KE, Thomaz SM, Amalfitano S, Kats LB (2015) Aquatic invasive species: challenges for the future. In: *Hydrobiologia*. Kluwer Academic Publishers, pp 147–170
- Hui C, Richardson DM, Landi P, Minoarivelo HO, Garnas J, Roy HE (2016) Defining invasiveness and invasibility in ecological networks. *Biol Invasions* 18(4):971–983
- Hulme PE (2021) Unwelcome exchange: International trade as a direct and indirect driver of biological invasions worldwide. *One Earth* 4(5):666–679
- Iacarella JC, Dick JT, Alexander ME, Ricciardi A (2015) Ecological impacts of invasive alien species along temperature gradients: testing the role of environmental matching. *Ecol Appl* 25(3):706–716
- IPBES (2019) Summary for policymakers of the global assessment report on biodiversity and ecosystem services of the Intergovernmental Science-Policy Platform on Biodiversity and Ecosystem Services. IPBES secretariat, 56
- Jazdzewski K, Konopacka A, Grabowski M (2004) Recent drastic changes in the gammarid fauna (Crustacea, Amphipoda) of the Vistula River deltaic system in Poland caused by alien invaders. *Divers Distrib* 10(2):81–87
- Jeschke JM, Strayer DL (2005) Invasion success of vertebrates in Europe and North America. *Proc Natl Acad Sci* 102(20):7198–7202
- Johnson PT, Olden JD, Solomon CT, Vander Zanden MJ (2009) Interactions among invaders: community and ecosystem effects of multiple invasive species in an experimental aquatic system. *Oecologia* 159(1):161–170
- Karatayev AY, Mastitsky SE, Burlakova LE, Olenin S (2008) Past, current, and future of the central European corridor for aquatic invasions in Belarus. *Biol Invasions* 10(2):215–232
- Karatayev AY, Burlakova LE (2022) What we know and don't know about the invasive zebra (*Dreissena polymorpha*) and quagga (*Dreissena rostriformis bugensis*) mussels. *Hydrobiologia*. <https://doi.org/10.1007/s10750-022-04950-5>

- Kearney MP, Morton BS (1970) The distribution of *Dreissena polymorpha* (Pallas) in Britain. *J Conchol* 27:97–100
- Kelly NE, Wantola K, Weisz E, Yan ND (2013) Recreational boats as a vector of secondary spread for aquatic invasive species and native crustacean zooplankton. *Biol Invasions* 15:509–519
- Kestrup AM, Ricciardi A (2009) Environmental heterogeneity limits the local dominance of an invasive freshwater crustacean. *Biol Invasions* 11(9):2095–2105
- Kinzelbach R (1992) The main features of the phylogeny and dispersal of the zebra mussel *Dreissena polymorpha*. *zebra mussel Dreissena polymorpha* 4:5–17
- Kipp RM, Ricciardi A (2007) Hemimysis anomala. Great Lakes Aquatic Nonindigenous Species Information System (GLANSIS)
- Klink A, Bij de Vaate A (1996) *Hypania invalida* (Grube, 1860) (Polychaeta: Ampharetidae) a freshwater polychaeta in the Lower Rhine, new to the Dutch fauna. *Lauterbornia* 25:57–60
- Kobak J, Żytkowicz J (2007) Preferences of invasive Ponto-Caspian and native European gammarids for zebra mussel (*Dreissena polymorpha*, Bivalvia) shell habitat. *Hydrobiologia* 589(1):43–54
- Kobak J, Kakareko T, Poznańska M, Żbikowski J (2009) Preferences of the Ponto-Caspian amphipod *Dikerogammarus haemobaphes* for living zebra mussels. *J Zool* 279(3):229–235
- Kobak J, Kakareko T, Jermacz Ł, Poznańska M (2013) The impact of zebra mussel (*Dreissena polymorpha*) periostracum and biofilm cues on habitat selection by a Ponto-Caspian amphipod *Dikerogammarus haemobaphes*. *Hydrobiologia* 702(1):215–226
- Kobak J, Jermacz Ł, Płachocki D (2014) Effectiveness of zebra mussels to act as shelters from fish predators differs between native and invasive amphipod prey. *Aquat Ecol* 48(4):397–408
- Kot M (2001) Elements of mathematical ecology. Cambridge University Press
- Kouba A, Oficialdegui FJ, Cuthbert RN, Kourantidou M, South J, Tricarico E et al (2022) Identifying economic costs and knowledge gaps of invasive aquatic crustaceans. *Sci Total Environ* 813:152325
- La Sorte FA, McKinney ML, Pyšek P (2007) Compositional similarity among urban floras within and across continents: biogeographical consequences of human-mediated biotic interchange. *Glob Change Biol* 13(4):913–921
- Labat F, Piscart C, Fontan B (2011) First records, pathways and distributions of four new Ponto-Caspian amphipods in France. *Limnologica* 41(4):290–295
- Leuven RS, van der Velde G, Baijens I, Snijders J, van der Zwart C, Lenders HJ (2009) The river Rhine: a global highway for dispersal of aquatic invasive species. *Biol Invasions* 11(9):1989–2008
- Levine JM, Adler PB, Yelenik SG (2004) A meta-analysis of biotic resistance to exotic plant invasions. *Ecol Lett* 7(10):975–989
- Le Hen G, Balzani P, Haase P, Kouba A, Liu C, Nagelkerke LA, Haubrock PJ (2023) Alien species and climate change drive shifts in a riverine fish community and trait compositions over 35 years. *Sci Total Environ* 161486
- Lipinskaya T, Semenchenko V, Minchin D (2020) A pathways risk assessment of aquatic non-indigenous macroinvertebrates passing to, and through, the central European invasion corridor. *Manag Biol Invasions* 11(3):525–540
- Lockwood JL, Cassey P, Blackburn TM (2009) The more you introduce the more you get: the role of colonization pressure and propagule pressure in invasion ecology. *Divers Distrib* 15(5):904–910
- Lucy FE, Davis E, Anderson R, Booy O, Bradley K, Britton JR et al (2020) Horizon scan of invasive alien species for the island of Ireland. *Manag Biol Invasions* 11(2):155–177
- Macêdo RL, Franco ACS, Kozlowsky-Suzuki B, Mammola S, Dalu T, Rocha O (2022) The global social-economic dimension of biological invasions by plankton: grossly underestimated costs but a rising concern for water quality benefits? *Water Res* 222:118918
- MacIsaac HJ, Grigorovich IA, Ricciardi A (2001) Reassessment of species invasions concepts: the Great Lakes basin as a model. *Biol Invasions* 3:405–416
- MacNeil C, Platvoet D (2005) The predatory impact of the freshwater invader *Dikerogammarus villosus* on native *Gammarus pulex* (Crustacea: Amphipoda); influences of differential microdistribution and food resources. *J Zool* 267:31–38
- MacNeil C, Platvoet D, Dick JTA, Fielding N, Constable A, Hall N, Aldridge D, Renals T, Diamond M (2010) The Ponto-Caspian “killer shrimp”, *Dikerogammarus villosus* (Sowinsky, 1894), invades the British Isles. *Aquat Invasions* 5(4):441–445
- Maire A, Thierry E, Viechtbauer W, Daufresne M (2019) Poleward shift in large-river fish communities detected with a novel meta-analysis framework. *Freshw Biol* 64(6):1143–1156
- Mandahl-Barth G (1949) Bløddyr III. Ferskvandsbløddyr. *Danmarks Fauna* 54
- McLaughlan C, Aldridge DC (2013) Cultivation of zebra mussels (*Dreissena polymorpha*) within their invaded range to improve water quality in reservoirs. *Water Res* 47(13):4357–4369
- Metz O, Temmen A, von Oheimb KC, Albrecht C, Schubert P, Wilke T (2018) Invader versus invader: intra- and inter-specific competition mechanisms in zebra and quagga mussels. *Aquat Invasions* 13(4):473–480
- Minchin D, Lucy F, Sullivan M (2002) Zebra mussel: impacts and spread. In: *Invasive aquatic species of Europe. Distribution, impacts and management*. Springer, Dordrecht, pp 135–146
- Mooney HA (2005) Invasive alien species: the nature of the problem. *Scope-Sci Comm Probl Environ Int Counc Sci Unions* 63:1
- Morton B (1997) The aquatic nuisance species problem: a global perspective and review. pp 1–54. In: FM D'Itri (ed) *Zebra Mussels and Aquatic Nuisance Species*. Lewis Publishers. p 638
- Nakagawa S, Noble DW, Senior AM, Lagisz M (2017) Meta-evaluation of meta-analysis: ten appraisal questions for biologists. *BMC Biol* 15(1):1–14
- Olden JD, Poff NL (2004) Ecological processes driving biotic homogenization: testing a mechanistic model using fish faunas. *Ecology* 85(7):1867–1875



- Olden JD, Rooney TP (2006) On defining and quantifying biotic homogenization. *Glob Ecol Biogeogr* 15(2):113–120
- Orlova MI (2002) *Dreissena (D.) polymorpha*: evolutionary origin and biological peculiarities as prerequisites of invasion success. In: *Invasive aquatic species of Europe. Distribution, impacts and management*, Springer, Dordrecht, pp 127–134
- Paiva F, Barco A, Chen Y, Mirzajani A, Chan FT, Lauringson V, Baltazar-Soares M, Zhan A, Bailey SA, Javidpour J, Briski E, Kiel O, Kiel G (2018) Is salinity an obstacle for biological invasions? *Global Change Biol* 24:2708–2720
- Pauli NC, Briski E (2018) Euryhalinity of Ponto-Caspian invaders in their native and introduced regions. *Aquat Invasions* 13(4):439–447
- Pilotto F, Kühn I, Adrian R, Alber R, Alignier A, Andrews C et al (2020) Meta-analysis of multidecadal biodiversity trends in Europe. *Nat Commun* 11(1):3486
- Podraza P, Ehlert T, Roos P (2001) First report of *Echinogammarus trichiatus* (Crustacea: Amphipoda) in the river Rhine (Germany). *Lauterbornia* 41:129–134
- Polačik M, Janáč M, Jurajda P, Adámek Z, Ondračková M, Trichkova T, Vassilev M (2009) Invasive gobies in the Danube: invasion success facilitated by availability and selection of superior food resources. *Ecol Freshw Fish* 18(4):640–649
- Pyšek P, Hulme PE, Simberloff D, Bacher S, Blackburn TM, Carlton JT, Dawson W, Essl F, Foxcroft LC, Genovesi P, Jeschke JM, Kühn I, Liebhold AM, Mandrak NE, Meyerson LA, Pauchard A, Pergl J, Roy HE, Seebens H et al (2020) Scientists' warning on invasive alien species. *Biol Rev* 95(6):1511–1534
- Reid DF, Orlova MI (2002) Geological and evolutionary underpinnings for the success of Ponto-Caspian species invasions in the Baltic Sea and North American Great Lakes. *Can J Fish Aquat Sci* 59(7):1144–1158
- Rewicz T, Grabowski M, MacNeil C, Bącela-Spychalska K (2014) The profile of a 'perfect' invader—the case of killer shrimp, *Dikergammarus villosus*. *Aquat Invasions* 9(3):267–288
- Ricciardi A, Whoriskey FG, Rasmussen JB (1997) The role of the zebra mussel (*Dreissena polymorpha*) in structuring macroinvertebrate communities on hard substrata. *Can J Fish Aquat Sci* 54(11):2596–2608
- Ricciardi A (2001) Facilitative interactions among aquatic invaders: is an "invasional meltdown" occurring in the Great Lakes? *Can J Fish Aquat Sci* 58(12):2513–2525
- Ricciardi A (2006) Patterns of invasion of the Laurentian Great Lakes in relation to changes in vector activity. *Divers Distrib* 12:425–433
- Ricciardi A (2015) Ecology of invasive alien invertebrates. Thorp and Covich's *Freshwater Invertebrates: Ecology and General Biology*, Fourth Edition, vol 1. pp 83–91
- Ricciardi A, Iacarella JC, Aldridge DC, Blackburn TM, Carlton JT, Catford JA et al (2021) Four priority areas to advance invasion science in the face of rapid environmental change. *Environ Rev* 29(2):119–141
- Ricciardi A, MacIsaac HJ (2000) Recent mass invasion of the North American Great Lakes by Ponto-Caspian species. *Trends Ecol Evol* 15(2):62–65
- Russell JC, Sataruddin NS, Heard AD (2014) Over-invasion by functionally equivalent invasive species. *Ecology* 95(8):2268–2276
- Sendek A, Baity-Jesi M, Altermatt F, Bader MKF, Liebhold AM, Turner RM et al (2022) Fewer non-native insects in freshwater than in terrestrial habitats across continents. *Divers Distrib* 28(11):2303–2315
- Seebens H, Bacher S, Blackburn TM, Capinha C, Dawson W, Dullinger S et al (2021) Projecting the continental accumulation of alien species through to 2050. *Global Change Biol* 27(5):970–982
- Seebens H, Schwartz N, Schupp PJ, Blasius B (2016) Predicting the spread of marine species introduced by global shipping. *Proc Natl Acad Sci* 113(20):5646–5651
- Seebens H, Blackburn TM, Dyer EE, Genovesi P, Hulme PE, Jeschke JM, Pagad S, Pyšek P, van Kleunen M, Winter M, Ansong M, Arianoutsou M, Bacher S, Blasius B, Brockerhoff EG, Brundu G, Capinha C, Causton CE, Celesti-Grapow L et al (2018) Global rise in emerging alien species results from increased accessibility of new source pools. *Proc Natl Acad Sci United States Am* 115(10):2264–2273
- Seebens H, Briski E, Ghabooli S, Shiganova T, MacIsaac HJ, Blasius B (2019) Non-native species spread in a complex network: the interaction of global transport and local population dynamics determines invasion success. *Proc R Soc B* 286(1901):20190036–20190036
- Seebens H, Clarke DA, Groom Q, Wilson JR, García-Berthou E, Kühn I, Roigé M, Pagad S, Essl F, Vicente J, Winter M, McGeoch M (2020) A workflow for standardising and integrating alien species distribution data. *NeoBiota* 59:39–59
- Simberloff D (2006) Invasional meltdown 6 years later: important phenomenon, unfortunate metaphor, or both? *Ecol Lett* 9(8):912–919
- Simberloff D (2009) The role of propagule pressure in biological invasions. *Annu Rev Ecol Evol Syst* 40:81–102
- Simberloff D, von Holle B (1999) Positive interactions of non-indigenous species: invasional meltdown? *Biol Invasions* 1(1):21–32
- Simpson MJ, Browning AP, Warne DJ, Maclaren OJ, Baker RE (2022) Parameter identifiability and model selection for sigmoid population growth models. *J Theor Biol* 535:110998
- Sofaer HR, Jarnevich CS, Pearse IS (2018) The relationship between invader abundance and impact. *Ecosphere* 9(9):e02415
- Son MO (2019) Alien invertebrates in Ukrainian inland waters in the context of basin approach to river management and monitoring. *Geo Bio* 17:77–84
- Soto I, Ahmed DA, Beidas A, Oficialdegui FJ, Tricarico E, Angeler DG, Haubrock, PJ (2023a) Long-term trends in crayfish invasions across European rivers. *Sci Total Environ* 867:161537
- Soto I, Cuthbert RN, Ahmed DA, Kouba A, Domisch S, Marquez JR et al (2023b) Tracking a killer shrimp: *Dikergammarus villosus* invasion dynamics across Europe. *Divers Distrib* 29(1):157–172
- Stepien CA, Tumeo MA (2006) Invasion genetics of Ponto-Caspian gobies in the Great Lakes: a 'cryptic' species,

- absence of founder effects, and comparative risk analysis. *Biol Invasions* 8(1):61–78
- Strayer DL (1999) Effects of alien species on freshwater mollusks in North America. *J North Am Benthol Soc* 18(1):74–98
- Strayer DL, D'Antonio CM, Essl F, Fowler MS, Geist J, Hilt S et al (2017) Boom-bust dynamics in biological invasions: towards an improved application of the concept. *Ecol Lett* 20(10):1337–1350
- Sylvester F, MacIsaac HJ (2010) Is vessel hull fouling an invasion threat to the Great Lakes? *Divers Distrib* 16(1):132–143
- Thomas AC, Tank S, Nguyen PL, Ponce J, Sinnesael M, Goldberg CS (2020) A system for rapid eDNA detection of aquatic invasive species. *Environ DNA* 2(3):261–270
- Tyers M (2022) riverdist: River Network Distance Computation and Applications. R package version 0.15.5. <https://CRAN.R-project.org/package=riverdist>
- Vanderploeg HA, Nalepa TF, Jude DJ, Mills EL, Holeck KT, Liebig JR, Grigorovich IA, Ojaveer H (2002) Dispersal and emerging ecological impacts of Ponto-Caspian species in the Laurentian Great Lakes. *Can J Fish Aquat Sci* 59:1209–1228
- Van der Velde G, Rajagopal S, Van den Brink FWB, Kelleher B, Paffen BGP, Kempers AJ, Bij de Vaate A (1998) Ecological impact of an exotic amphipod invasion in the River Rhine. New concepts for sustainable management of river basins. Backhuys, Leiden, pp 159–169
- Viechtbauer W (2010) Conducting meta-analyses in R with the metafor Package. *J Stat Softw* 36:1–48. <https://doi.org/10.18637/jss.v036.i03>
- Vučković N, Pozojević I, Urbanič G, Mihaljević Z (2021) New evidence supporting upstream pathways of *Hypnia invalida* (Grube, 1860) invasion. *BioInv Record* 10(3):589–597
- Waterfield H (2009) Update on zebra mussel (*Dreissena polymorpha*) invasion and establishment in Otsego Lake 2008. 41st Ann. Rept. (2008). SUNY Oneonta Biol.Fld. Sta., SUNY Oneonta.
- Wickham H, Chang W, Wickham MH (2016) Package 'ggplot2'. Create elegant data visualisations using the grammar of graphics. Version 2(1):1–189
- Williamson M, Griffiths B (1996) *Biological invasions*. Springer Science and Business Media, Chapman & Hall, Great Britain, pp 55–157
- Zenkevitch L (1963) *Biology of the seas of the USSR*. George Allen & Unwin Ltd., London, UK, pp 38–56

**Publisher's Note** Springer Nature remains neutral with regard to jurisdictional claims in published maps and institutional affiliations.