



Universiteit
Leiden
The Netherlands

Metabolomics assisted with stable-isotope labeling: exploring neuronal metabolism related to Parkinson's disease

Huang, L.

Citation

Huang, L. (2024, January 25). *Metabolomics assisted with stable-isotope labeling: exploring neuronal metabolism related to Parkinson's disease*. Retrieved from <https://hdl.handle.net/1887/3715034>

Version: Publisher's Version

License: [Licence agreement concerning inclusion of doctoral thesis in the Institutional Repository of the University of Leiden](#)

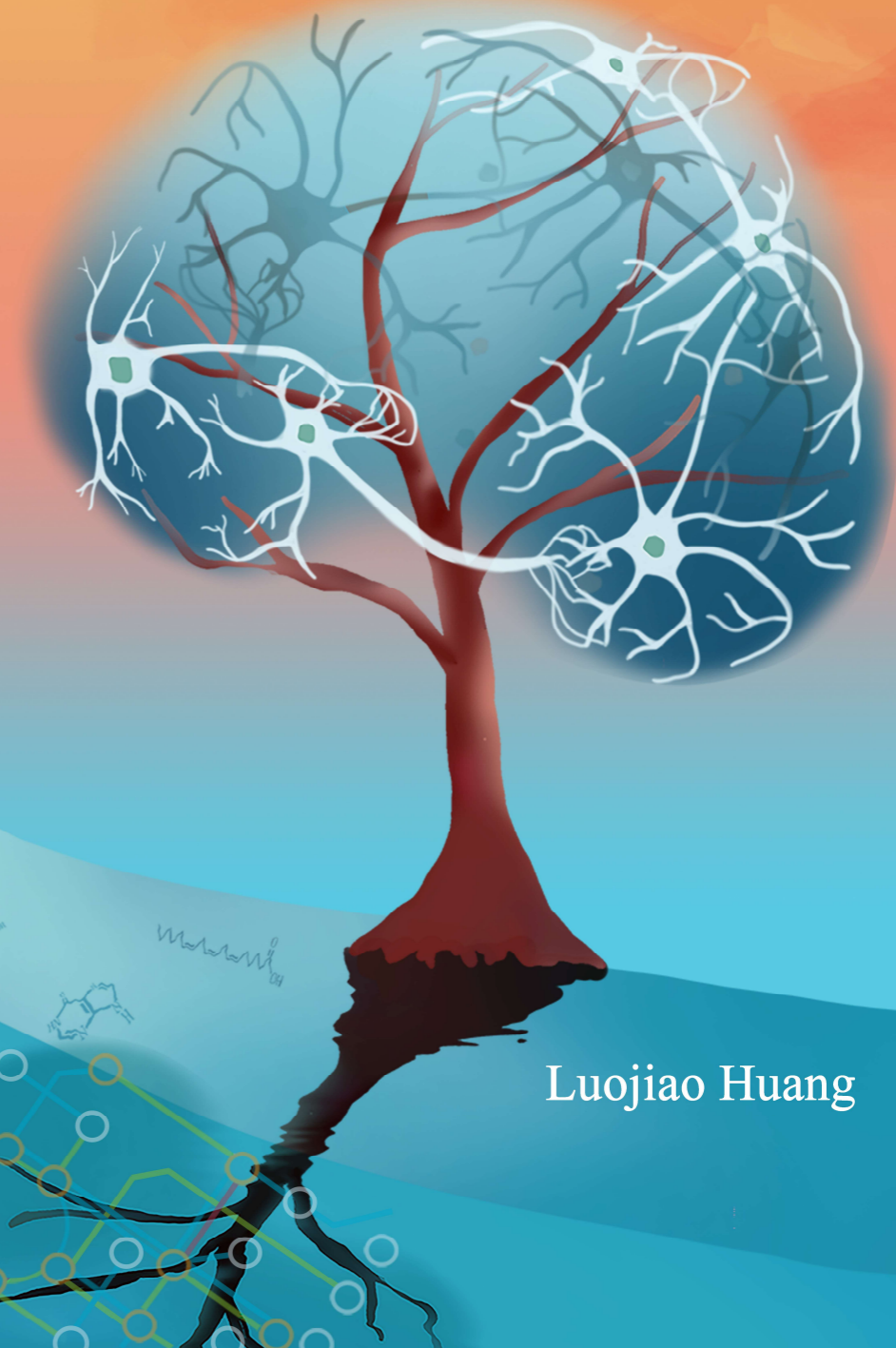
Downloaded from: <https://hdl.handle.net/1887/3715034>

Note: To cite this publication please use the final published version (if applicable).

Metabolomics assisted with stable-isotope labeling: Exploring neuronal metabolism related to Parkinson's disease

Exploring neuronal metabolism related to Parkinson's disease

LuoJiao Huang



LuoJiao Huang