

University of Groningen

The Visual Dictionary of Antimicrobial Stewardship, Infection Control, and Institutional Surveillance

Keizer, Julia; Luz, Christian F.; Sinha, Bhanu; Gemert-Pijnen, Lisette van; Albers, Casper; Jong, Nienke Beerlage-de; Glasner, Corinna

DOI:

[10.1101/2021.05.19.444819](https://doi.org/10.1101/2021.05.19.444819)

IMPORTANT NOTE: You are advised to consult the publisher's version (publisher's PDF) if you wish to cite from it. Please check the document version below.

Document Version

Publisher's PDF, also known as Version of record

Publication date:

2021

[Link to publication in University of Groningen/UMCG research database](#)

Citation for published version (APA):

Keizer, J., Luz, C. F., Sinha, B., Gemert-Pijnen, L. V., Albers, C., Jong, N. B., & Glasner, C. (2021). *The Visual Dictionary of Antimicrobial Stewardship, Infection Control, and Institutional Surveillance*. BioRxiv. <https://doi.org/10.1101/2021.05.19.444819>

Copyright

Other than for strictly personal use, it is not permitted to download or to forward/distribute the text or part of it without the consent of the author(s) and/or copyright holder(s), unless the work is under an open content license (like Creative Commons).

The publication may also be distributed here under the terms of Article 25fa of the Dutch Copyright Act, indicated by the "Taverne" license. More information can be found on the University of Groningen website: <https://www.rug.nl/library/open-access/self-archiving-pure/taverne-amendment>.

Take-down policy

If you believe that this document breaches copyright please contact us providing details, and we will remove access to the work immediately and investigate your claim.

Downloaded from the University of Groningen/UMCG research database (Pure): <http://www.rug.nl/research/portal>. For technical reasons the number of authors shown on this cover page is limited to 10 maximum.

The Visual Dictionary of Antimicrobial Stewardship, Infection Control, and Institutional Surveillance

Julia Keizer^{1*}, Christian F. Luz^{2*}, Bhanu Sinha², Lisette van Gemert-Pijnen¹, Casper Albers³, Nienke Beerlage-de Jong^{4†}, Corinna Glasner^{2†}

1 University of Twente, Department of Psychology, Health and Technology, Centre for eHealth and Wellbeing Research, PO box 217, 7500AE Enschede, The Netherlands

2 University of Groningen, University Medical Center Groningen, Department of Medical Microbiology and Infection Control, Hanzeplein 1, 9700RB Groningen, The Netherlands

3 University of Groningen, Heymans Institute for Psychological Research, Grote Kruisstraat 2/1, 9712 TS Groningen, The Netherlands

4 University of Twente, Department of Health Technology and Services Research, Technical Medical Center, Faculty of PO box 217, 7500AE Enschede, The Netherlands

*.† Equal contribution

Abstract

Objectives

Data and data visualization are integral parts of (clinical) decision-making in general and stewardship (antimicrobial stewardship, infection control, and institutional surveillance) in particular. However, systematic research on the use of data visualization in stewardship is lacking. This study aimed at filling this gap by creating a visual dictionary of stewardship through an assessment of data visualization in stewardship research.

Methods

A random sample of 150 data visualizations from published research articles on stewardship were assessed. The visualization vocabulary (content) and design space (design elements) were combined to create a visual dictionary. Additionally, visualization errors, chart junk, and quality were assessed to identify problems in current visualizations and to provide improvement recommendations.

Results

Despite a heterogeneous use of data visualization, distinct combinations of graphical elements to reflect stewardship data were identified. In general, bar (n=54; 36.0%) and line charts (n=42; 28.1%) were preferred visualization types. Visualization problems comprised colour scheme mismatches, double y-axis, hidden data points through overlaps, and chart junk. Recommendations were derived that can help to clarify visual communication, improve colour use for grouping/stratifying, improve the display of magnitude, and match visualizations to scientific standards.

Conclusions

Results of this study can be used to guide data visualization creators in designing visualizations that fit the data and visual habits of the stewardship target audience. Additionally, the results can provide the basis to further expand the visual dictionary of stewardship towards more effective visualizations that improve data insights, knowledge, and clinical decision-making.

Introduction

The amount of and reliance on data increases with the increase of scientific publications and information technologies in healthcare practice [1,2]. The increased complexity of big data raises various issues to be resolved by innovative big data analytics. This includes integrating, analysing and visualizing data to translate into meaningful information [3,4]. Translating raw data into meaningful information and communicating it to specific target groups is a challenge [1]. Without this translation and communication, researchers and practitioners cannot optimally use the information, so that the true value of the data remains hidden. Data visualization, here defined as the graphical representation of quantitative information, can facilitate the transformation, memorisation, and communication of data to understandable and actionable information. Data visualization also aids in the interpretation of increasingly large and complex datasets (big data) and in the understanding of sophisticated statistical models (machine learning) and their results - two rising trends over the last decades [5,6]. The importance of data visualization can, once again, be observed in the COVID-19 pandemic with the ubiquitous presence of charts, figures, and dashboards that aim to inform and support decision-making for a wide variety of target audiences [7].

Data visualization is a very active (research) field in itself and is generally part of typical statistical software used in the data analysis process (e.g. R, SPSS, SAS, STATA, Excel). Information and recommendations for the data visualization process are numerous and can be transferred between research fields or domains [8–11]. However, research on the visual domain context within a research field is often lacking, i.e. what the target audience is accustomed to see and expects in terms of content and design, and how this influences the perception and interpretation of data visualizations from different perspectives [12]. Common data visualization practices in a specific domain can be identified by studying the visualization design space [13]. This visual design space can be described as “an orthogonal combination of two aspects”, namely marks (i.e. graphical elements such as points, lines and areas) and visual channels to control their appearance (i.e. aesthetic properties such as colour, size and shape) [13].

To clarify the conceptual definitions for assessing and describing data visualizations a linguistic analogy can be used: a dictionary describes language in terms of both vocabulary (i.e. the set of words familiar in a language) and grammar/punctuation (i.e. the set of structural rules and supporting marks that control the composition and navigability of sentences, phrases, and words). Similarly, the visual dictionary describes visualizations in terms of both visual vocabulary (i.e. the domain content in terms of visualized data attributes) and visual

design space (i.e. graphical elements and supporting aesthetic properties). The language or visual domain context is an overarching concept that represents language/visualization in practice, i.e. expectations and customs of the target audience, and how this affects their perception and interpretation of data visualizations (see also Figure 1). The visual domain context is, just as language, subject to changes over time and subject to interpretation differences based on varying perspectives.

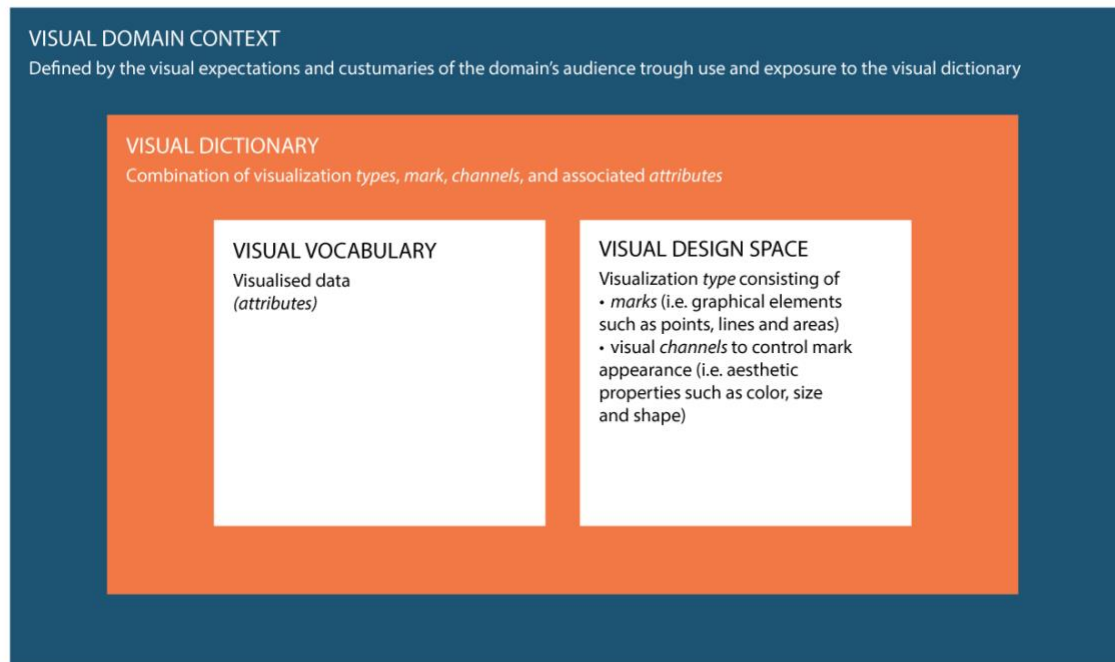


Figure 1. Conceptual framework used in this study to clarify the definitions and interrelations between the visual domain context, the visual dictionary and the visual domain vocabulary and visual design space.

Data and data visualization play important parts in the field of infectious diseases and antimicrobial resistance (AMR) for the reporting on the growing burden on health and healthcare systems [14,15]. Comprehensible and actionable information on antimicrobial consumption, pathogen distribution, or incidence and prevalence of (multi-) drug resistant microorganisms are vital to design interventions to tackle the AMR challenge [16]. On the hospital level, antimicrobial and diagnostic stewardship, infection control, and institutional surveillance (further summarised under 'stewardship') are the core components of strategies that promote the responsible use of antimicrobials and improve the quality and safety of patient care [17,18]. Data visualization is an integral part of these strategies, as it unveils the local situation and the drivers of AMR and can have a significant impact on the use of antimicrobials [19,20].

It has been shown how important it is to study data and data visualization experiences and perceptions in the medical domain and how this can influence the interpretation of data [21,22]. Depending on the type of visualization used, identifying the key messages from the data visualization can be substantially hindered. The audience's background and its familiarity with data visualization (the visual domain context) have to be taken into account in the design process to avoid these obstacles. Example studies that identified the visual domain context by studying the design space can be found in the field of genomic epidemiology and genomic data visualization [23,24]. Although, some recommendations and best practices exist that are helpful in the data visualization creation process, common data visualizations practices in the field of stewardship have yet to be revealed [25,26]. The visual domain context and the use of data visualization in the field are unstudied - a systematic approach to define the design space is missing.

In this study, we aim to fill these gaps by assessing and defining the design space of data visualization in stewardship and to create a visual dictionary. The results of this study can help data visualization creators, such as healthcare/AMR/data professionals and scientists, to anticipate the visual domain context of the target audience and link it with existing recommendations for the data visualization process. This could benefit both research and clinical decision-making in the translation and communication of data to understandable and actionable information needed to tackle the AMR challenge, thereby improving the quality and safety of health and healthcare.

Methods

Study data

This study was based on a previous mapping study that clustered the field of AMR into 88 topics [27]. The map was generated by assessing the entire body of AMR literature available on PubMed between 1999 and 2018 consisting of 152780 articles. The identification of the 88 topics within the field was performed based on the title and abstract text using a machine learning algorithm (STM) [28]. The present study used all articles of three of the identified topics: *stewardship* (n = 3383 articles), *infection control* (n = 1687 articles), and *institutional surveillance* (n = 2176 articles). Within the corpus of the 88 topics, these three topics reflect the core components of an integrated, comprehensive stewardship concept in institutional healthcare as defined above [18].

For each topic, a sample of 60 articles that contained at least one data visualization was randomly drawn. Data visualization was defined as the graphical representation of quantitative data. Geographical maps and flowcharts were excluded. From the sampled articles, one visualization per article was randomly sampled resulting in 180 data visualizations. The study design is shown in Figure 2.

To analyse reliability, ten randomly picked data visualizations of each topic were analysed in duplicate to calculate the inter-rater reliability (joint probability of agreement) [29]. Subsequently, 150 visualizations were included in the final analysis.

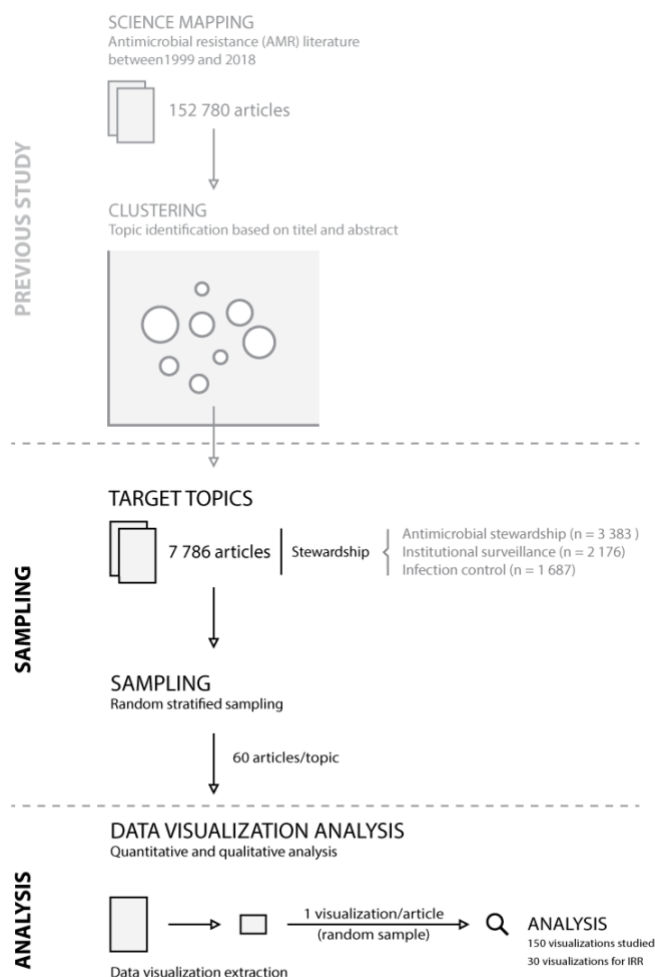


Figure 2. Study design. IRR = inter-rater reliability

Data visualization analysis

The extracted data visualizations were analysed based on the nomenclature and categorization developed by Munzner and further adapted for this study [13]. This approach dissected data visualizations into visual characteristics:

- *Attributes (or variables, parameters, features)*: the underlying data labelled as categorical, ordered, or quantitative.
- *Marks*: the basic geometric element (points, lines, or areas)
- *Channel*: channels control the visual appearance of *marks*
 - *Position*: horizontal, vertical, both
 - *Colour*
 - *Shape*
 - *Tilt*
 - *Size*: length, area, volume
- *Channel effectiveness*
 - *Magnitude*: ordered *attributes* can be expressed in ranks from most effective to least effective: position on common scale (most effective) > position on unaligned scale > length > tile/angle > area > depth > colour luminance/saturation > curvature/volume (least effective)
 - *Identity*: the effectiveness to express categorical *attributes* can also be ordered: colour hue > shape

In addition, data visualizations were labelled with the visualization type used (e.g., bar chart, line chart, scatter plot, etc.) and the use of faceting (multiple linked visualizations in a design grid). Each visualization was assessed upon its interpretability without additional text (yes, if interpretable without additional information; partially, if a description was given in a caption; not all, if a description was absent or only available in the article text).

Visualization quality was captured by rating the first and last impression during the analysis process on a scale from 1 (poor) to 5 (good). The choice of the visualization type given the underlying data was rated on a scale from 1 (poor) to 5 (good). In addition, free, written text was recorded to capture comments and remarks about the data visualization.

A structured assessment form (supplementary materials S1) was developed comprising all the above mentioned elements.

The form was discussed within a multidisciplinary team of data-visualization and AMR experts. The assessment form was applied to each data visualization in a two reviewer (JK, CFL) process. First, the assessment form was used for training the analysis process with ten data visualizations not part of the final study data. Next, each reviewer analysed 50% of the study data visualizations followed by a re-review through the other researcher. Consensus was reached through discussion if the first assessment differed.

Quantitative analysis

Results from the data visualization analysis step that were analysed with descriptive statistics comprised visualization type, number of attributes, faceting, rating, and visualization type choice. *Attributes* were analysed for pairwise co-occurrence and presented if a combination occurred more than twice in total.

Visual dictionary

The visual dictionary was created based on the visual vocabulary content (stewardship-related data) and the visual design space (characteristics used to design the visualization). The content was analysed by identifying the *attributes* and grouping the *attribute* names using inductive coding. This part built the vocabulary of visualized stewardship data. Next, stratified quantitative analyses of visual characteristics (*channel, marks, etc.*) per *attribute* were performed, thereby adding the visual design space to the vocabulary to create the visual dictionary. Linking text and visual vocabulary enabled the creation of a visual dictionary to help identify *attributes* (e.g., resistance) with associated *channels* (e.g., points and lines on a common scale).

Qualitative analysis

Comments and remarks about the data visualizations were coded in Microsoft Excel by two researchers (CL and JK). An open coding round was followed by axial coding to discover related concepts in the sub-codes. Differences were discussed until consensus was reached, which increased the internal validity [30]. Next to improvements, CL and JK coded remarks about chart junk (i.e. the unnecessary and/or redundant use of visualization embellishments) [11].

Results

In total, 150 visualizations were analysed (IRR: 87% joint probability of agreement). The following sections are separated into visualization vocabulary (content) and visual dictionary with results stratified by identified *attributes*. These sections are followed by visualization ratings, identified visualization problems (including chart junk), and suggested recommendations for visualization creators and users.

Visual vocabulary (content)

In total, 48 different coded attributes were identified. The majority (54.7%) of visualizations used three attributes. Two or four attributes were used in 18.0% and 20.7% of all visualizations, respectively. Few of the studied visualizations (6.7%) used more than 4 attributes.

The ten most used attributes were *time* (n=69, 46.0%), *setting* (n=43, 28.7%), *antimicrobial consumption* (n=32, 21.3%), *resistance* (n=31, 20.1%), *antimicrobials* (n=27, 18.0%), *percentage* (n=26, 17.3%), *count* (n=24, 16.0%), *incidence* (n=24, 16.0%), *numeric value* (n=20, 13.3%), and *bacteria* (n=12, 8.0%). Attributes can be grouped into objects (e.g. *bacteria*) and measurements (e.g. *percentage*). However, the following analysis focuses on attribute combinations and attributes are thus kept ungrouped.

Attributes showed different co-occurrence patterns (Figure 2). The ten most frequent combinations were *time* and *antimicrobial consumption* (n=21), *time* and *incidence* (n=18), *antimicrobial consumption* and *antimicrobials* (n=12), *antimicrobials* and *resistance* (n=12), *time* and *resistance* (n=12), *time* and *antimicrobials* (n=11), *antimicrobial consumption* and *setting* (n=10), *resistance* and *setting* (n=9), *time* and *setting* (n=9), and *percentage* and *setting* (n=8).

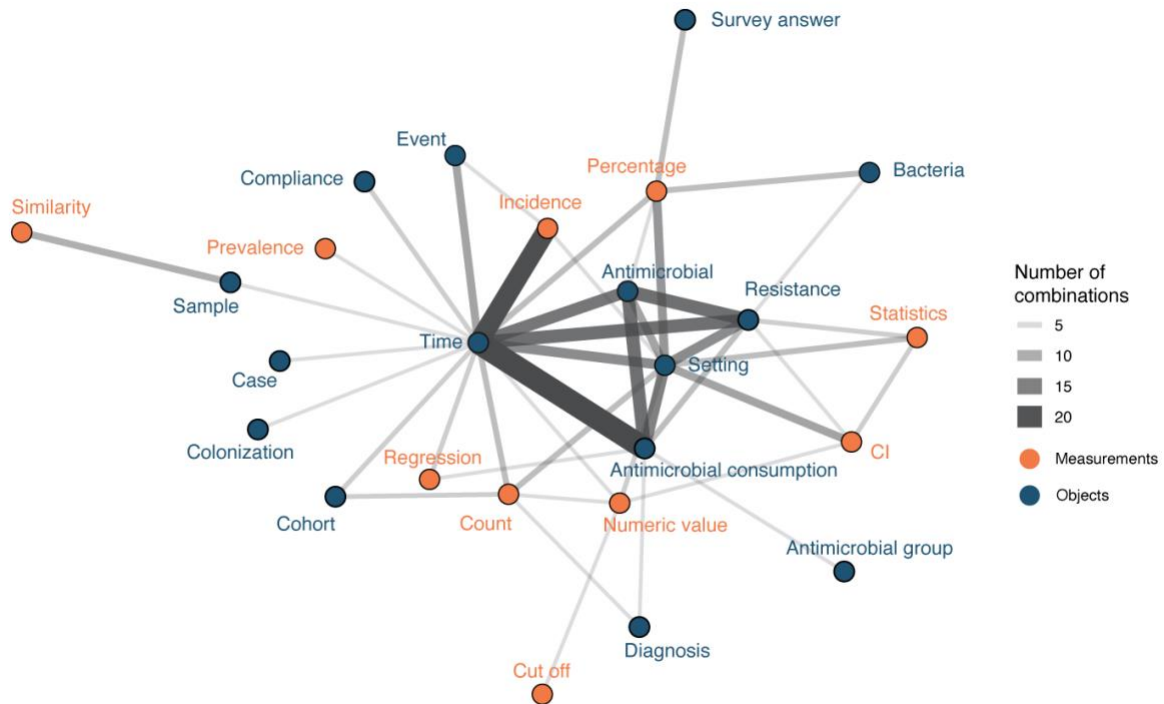


Figure 3. Attribute combinations in visualizations (combination count ≥ 3), thickness of lines corresponds to combination count. Orange points and labels represent attributes related to measurements; blue points and labels represent attributes related to objects.

Visual dictionary

Visualization types

Fourteen different visualization types were identified of which bar charts ($n=54$, 36.0%) and line charts ($n=42$, 28.1%) were predominantly used. Bar charts were most frequently associated with the attributes *antimicrobials*, *bacteria*, *cohorts*, *compliance*, *counts*, *diagnosis*, *errors*, *percentages*, *resistance*, *setting*, and *survey answers*. Line charts were predominantly associated with *antimicrobial consumption*, *costs*, *cut-off*, *incidence*, *numeric values*, *regression*, *statistics*, and *time* (detailed results available in the supplementary materials S2)

Different visualization types combined in one visualization were used in 10.7% ($n = 16$) of all visualizations. In these, visualization types that were combined more than once were bar charts with line charts ($n=5$, 31.3%) and stacked bar charts with line charts ($n=2$, 12.5%). In 41 visualization (27.3%) facets were used, i.e., one visualization split into a matrix of visualizations using the same axes.

Visual design space

Different patterns of visual characteristics could be identified for different *attributes* (detailed counts and percentages in supplementary materials S3).

1. Position: Horizontal axes were mostly used for *Antimicrobials, bacteria, confidence intervals, counts, cut-offs, diagnoses, events, numeric values, settings, similarity, and time*. In contrast, vertical axes were mostly used for *antimicrobial consumption, cases, cohorts, counts, errors, incidence, percentages, regression, resistance, samples, statistics, and survey answers*.
2. Marks, colour, shape: *Attributes* also differed in their use of marks. Some attributes had clear associations with mark types, e.g. *time* was visualised with lines in all instances. Areas as marks were seldomly used, e.g. for *antimicrobial consumption, counts, cut-offs, incidence, numeric values, percentages, and resistance*. Colour and shape channels were frequently used in most attributes. A detailed colour and shape channel analysis is available in the supplementary materials S3.
3. Size: Size was most often visually reflected through length. Area to reflect size was used for *antimicrobial consumption, count, cut-off, incidence, numeric values, percentages, and resistance*. Volume was rarely used (*count, percentages*).
4. Ordering: Position on a common scale was mostly used in quantitative and ordered attributes reflecting the best channel effectiveness for these attribute types. Categorical attributes mostly used colour hue, which is preferred over the less effective use of shapes. A detailed channel effectiveness analysis is available in the supplementary materials S4.

Ratings, problems, and chart junk

Visualization ratings

Overall, 55.3% (n=83) of all visualizations were interpretable without additional text (in caption or in the manuscript text). The overall choice of visualization type for the presented data was rated with a mean of 4.62 (SD: 0.9) on a scale from 1 (poor) to 5 (good). The general assessment of the visualization quality (scale 1=poor to 5=good) was rated with a mean of 3.6 (SD:1.2). Identified problems (and recommendations) are described below.

Identified problems

The coding of the identified problems are presented in the coding scheme in Table 1, including

axial codes, open codes and frequencies. The axial and open codes are further elaborated upon below the table. In supplementary materials S5, additional illustrative quotes per code are presented.

Table 1. Identified problems in data visualization.

Code (axial)	Code (open)	Count
Missing labels, annotations, legend and/or abbreviation explanations	Legend/caption is missing/unclear	26
	Labels for lines/points are missing/unclear	23
	Labels for axes are missing/unclear	20
	Annotation/direct labelling overflow	14
	Abbreviations not explained	12
	Use of colours not explained	7
Subtotal		102
Axes not readable	Axis intervals uneven (within visualization and between faceted visualizations)	17
	Axes texts not clearly readable	11
	Too short/dense axes/intervals	5
	Uneven bar placement	1
	Axis intervals not logical (within visualization and between faceted visualizations)	1
Subtotal		35
Colour scheme mismatch	Groups not distinguishable by colours	14
	Non-intuitive colour schemes used	6
	Categorical colours used for ordered attribute	5
	Groups not distinguishable from background	2
Subtotal		27
Hidden data points by overlaps	Overlap of shapes problematic	7
Subtotal		7
Using suboptimal channel effectiveness	Groups not distinguishable by shapes	12
	Sub-effective channel is chosen	3
Subtotal		15
Size scale indistinguishable	Differences in size not clear	10
	Groups not distinguishable by shape size	3
	Contrasts between groups not clear	2
Subtotal		15
Missing channel	Line types not used to distinguish between groups	2
	Colours not used to compare between visualization/groups	2
Subtotal		4
Visualization type does not (optimally) fit data	Other visualization type preferred	21
Subtotal		21
Data points/lines on double axes	Double Y-axes difficult to read	11
Subtotal		11
Channel overflow	Double use of shape and colour	8
	Unnecessary use of shape sizes	1
	Unnecessary use of colour	1
	Too many colours	1
Subtotal		11
Attribute overflow	Too many attributes	2
	Relating attributes that are not related	1
Subtotal		3

Information sparsity	Could be text	1
		Subtotal 1
Incoherent ordering	Data not ordered coherently	1
		Subtotal 1
		Grand total 253

Most problems were related to the clarification of the visualization, because of missing or unclear labels, annotations, legend, captions and/or abbreviation explanations (n=102; 68.0%). Other problems concerned the axis readability (n=35; 23.3%) for example due to uneven axis-intervals within a visualization and between faceted visualizations for comparison. Problems related to distinguishing data points and groups in visualizations were detected, for example with mismatches in colour scheme (n=27; 18.0%), hidden data points by overlaps (n=7; 4.7%), and using suboptimal channel effectiveness (n=7, 4.7%). In some cases, data points and groups were not clearly distinguishable because of the size scale (n=15; 10.0%) or because of missing channels (e.g. line type or colour, n=4; 2.7%). Furthermore, problems identified were the suboptimal or wrong choice in type of visualization (n=21; 14.0%) and the confusing use of double y-axis (n=11; 7.3%). Some visualizations were overcrowded, either in terms of channel overflow (e.g. using both colour and shape, n=11; 7.3%) or attribute overflow (e.g. too many attributes, n=3; 2.0%). On the contrary, the information in one visualization was sparse enough to be written in text (i.e. no added value of a visualization). Lastly, one problem related to the incoherent ordering of data.

Chart junk

Most chart junk represented text that cluttered the visualization (n=8), for example with redundant direct labels for each data point. Other chart junk was found in visualizations using unnecessary 3D (n=8), background colours (n=6), shadow (n=4), and colour/shape filling (n=4).

Examples and recommendations

To illustrate problems in data visualization, we designed a visualization that exhibits several of the identified problems based on simulated data (Figure 4). Figure 5 proposes an alternative to Figure 4 where the identified problems were avoided. Of note, data such as the simulated data in these figures can be visualised in many different ways, depending on the underlying research questions.

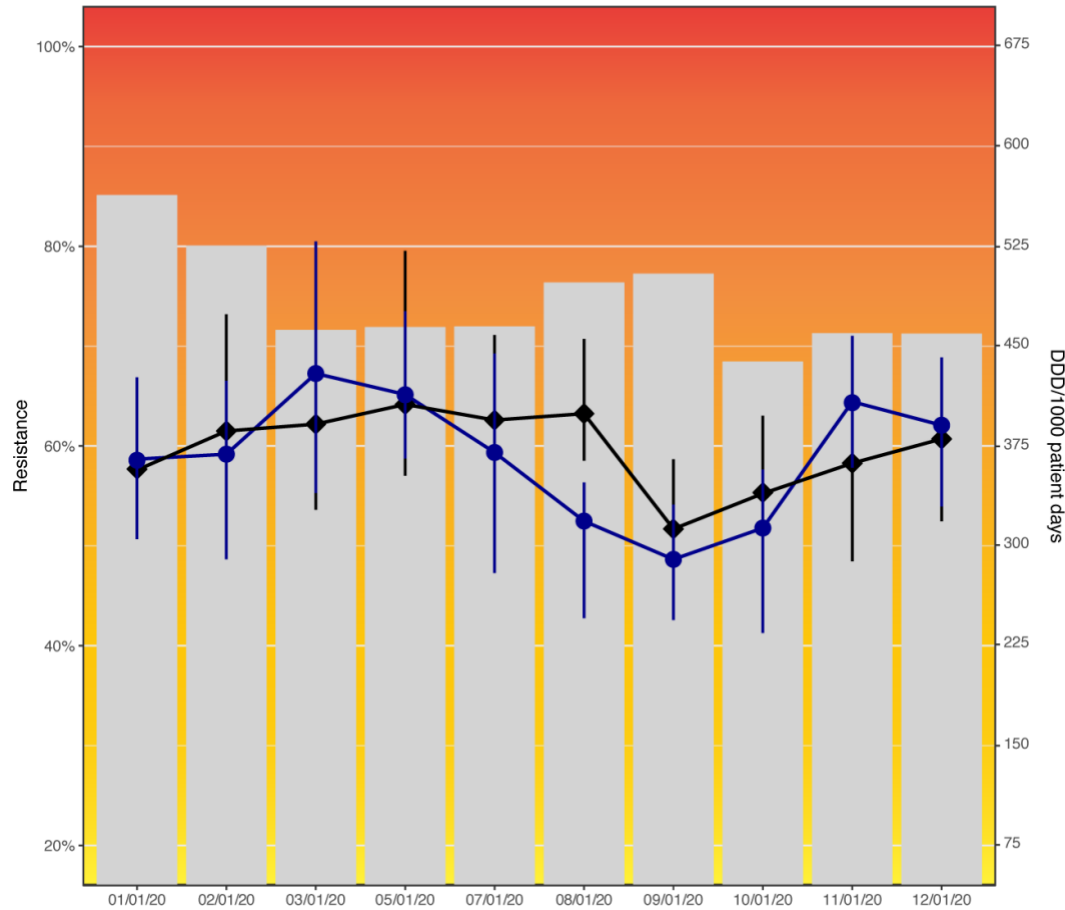


Figure 4. Resistance to amoxicillin in *Escherichia coli* and consumption of cefuroxime (black) and piperacillin/tazobactam (blue) across hospital departments in 2020. This data visualization (simulated data) shows several problems identified in this study: Axes not starting at zero, use of double y-axes, background colours, hidden data points by overlaps, colour scheme mismatch (blue and black difficult to distinguish), unequal axis steps on x-axis, missing legend, incomplete axis labels (abbreviation not explained).

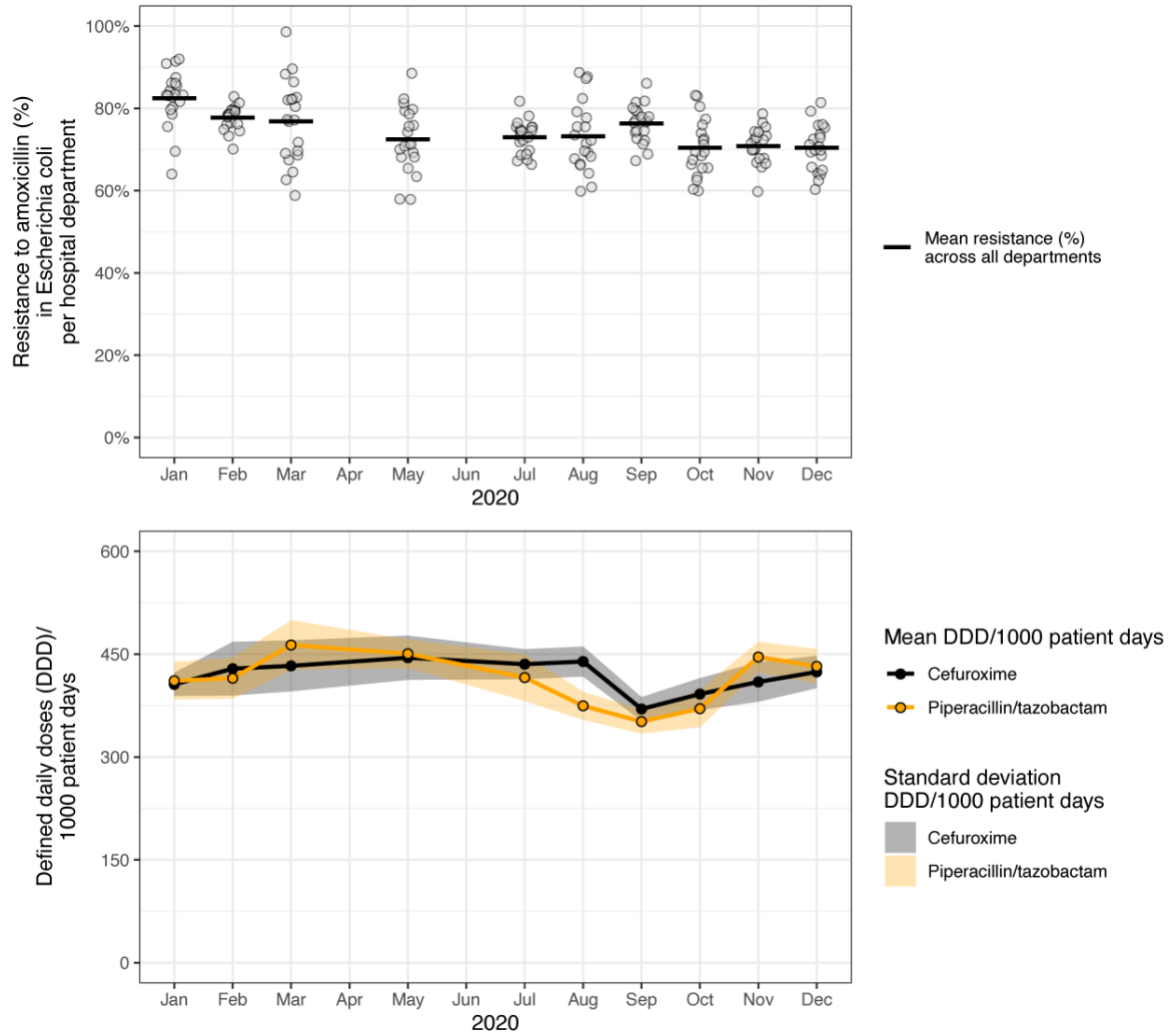


Figure 5. Resistance to amoxicillin in *Escherichia coli* and consumption of cefuroxime and piperacillin/tazobactam across hospital departments in 2020. These data visualizations use the same data as in Figure 4 (simulated data), but propose an improved visualization.

Figure 6 summarises the results of this study and presents the visual dictionary of stewardship. In addition, it provides a set of recommendations to avoid the most common problems in data visualizations as identified in this study.

The Visual Dictionary of Stewardship (Antimicrobial Stewardship, Infection Control, and Surveillance)

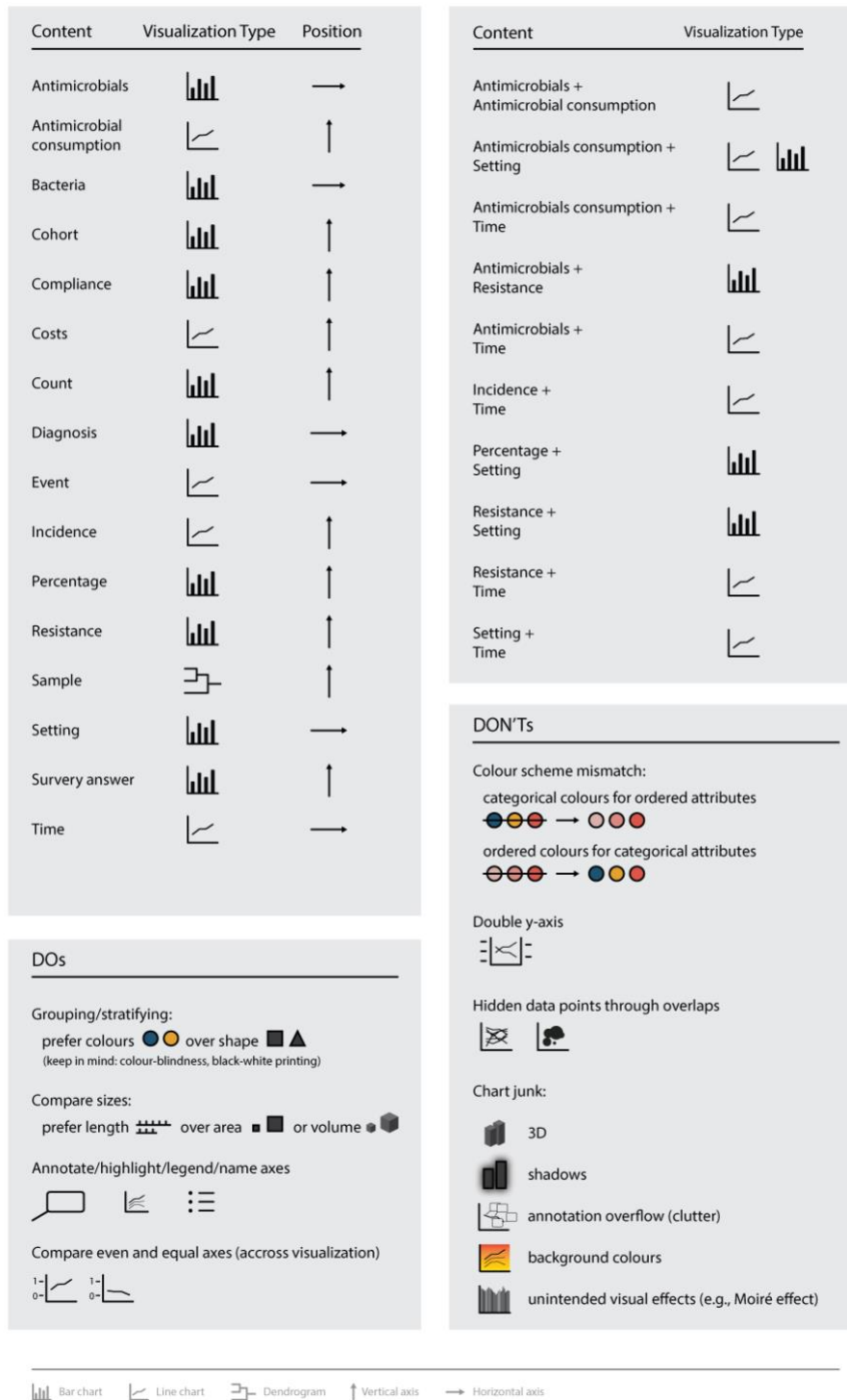


Figure 6. The visual dictionary of stewardship (antimicrobial stewardship, infection control, and institutional surveillance).

Discussion

This study systematically analysed the visual domain context of stewardship (i.e. antimicrobial stewardship, infection control, and institutional surveillance). Stewardship healthcare experts and scientists that create data visualizations can benefit from the revealed visual domain context, since it allows them to anticipate the visual habits of their target audience. The results of this study can serve as the basis to inform visualization creators to optimise visual communication in the field and to guide user-centred design, e.g., in clinical decision support systems.

Implications for data visualization creators

With the systematic analysis of the visual domain context of Stewardship we revealed common practices and identified problems with current visualizations. In this study we identified 14 different visualization types used in the visual domain context of the field. However, more than 80% of all visualizations used classical (stacked) bar or line charts; quite homogenous design choices. We argue that the visualization type choice is based on tradition and habits as a systematic approach to data visualization in the field was missing until now [26]. For researchers in the field that communicate their findings to various stakeholders (e.g. stewardship professionals, policy makers, epidemiologists) the described visual domain context in this study provides guidance to match their visualizations with the audience's visual expectations and habits. Especially the visual dictionary, the link between often used attributes (i.e. content) and associated design choices (e.g. visualization type or marks), will help to compose visualizations that fit with common practice. However, given the wide variety of data in the field and the increased complexity that big data will add (in terms of volume, velocity, variety, veracity, validity, volatility and value), more "visual variability" might be expected and even needed in the future [3,31,32]. Informing and teaching visualization creators and users about data visualization design alternatives is an important step in this process. A lack of awareness and knowledge about data visualization design alternatives might lead to suboptimal data visualizations. Examples from our findings were the use of less effective visual channels, suboptimal plot types for the presented data, or mismatches in colour choices for different data types. These are examples of instances where the respective data visualization creators require more support in visualization design choices. We see a clear role here for data visualization experts and software developers to cocreate open-source/access tools that support visualization creators in their visualization choices (e.g. reminders for adding labels and legends, suggestions for optimal colour schemes, warnings in case of chart junk). Our results and findings from similar studies in other fields [23,24] can

support them in doing so by providing an overview of what is already used, including potential pitfalls. Of note, academic journals play an important part in this process by providing the platform for data visualizations and should be encouraged to promote high quality data visualization practices.

Improving data visualization practices

In general, the use of data visualizations for communicating data is highly encouraged. It greatly supports the interpretation, memorisation, and communication of insights and knowledge gained from data. Based on the identified problems with data visualizations in this study, several recommendations can be made to improve data visualization practices both in general and for stewardship specifically. Some recommendations relating to identified problems were already depicted in Figure 5 and 6 and are elaborated and extended upon below.

Colours

The use of colours in data visualization is highly complex. Colours can make a plot more appealing. Colours are also more effective than shape to distinguish categorical data [13]. Yet, shapes for categorical data were still widely used in the studied visualizations. This could reflect the need to provide visualizations that are black-and-white compatible (printable), although this has become less important with most of the scientific content being accessible online. Several aspects are key to consider when designing data visualizations with colour: colour-blindness, distortion through uneven colour gradients, or the perceived order of colours [33]. While field-specific colour codes might exist (e.g., red colour to represent resistance), general recommendations for the use of colours in scientific publications are available and are applicable across fields [33]. Extensive information on the use of colours in data visualization can also be found in online blogs from designers in the data visualization community (e.g., <https://blog.datawrapper.de/which-colour-scale-to-use-in-data-vis/>).

Adding statistics

Common scientific visualization types such as heatmaps or boxplots were rarely used in the studied data visualizations. In general, statistical aggregate parameters were often lacking. This would often have improved the visualizations under study. Boxplots are a classical example. However, this visualization type is rightfully criticised to conceal individual data points and could be misleading [34]. We also identified difficulties in displaying individual data points as one of the main problems. This problem was caused by overlaps, problematic scale

sizes, or missing channels to distinguish data points. We highly advise to stick to the mantra of “above all show the data”, to avoid overlapping or concealing graphical elements [11], and to carefully balance the number of visualised attributes per visualization with simplicity.

Standardizing the visual dictionary

Although a large variety of data were displayed in the studied visualizations (48 different *attributes* such as antimicrobials, bacteria, or time), we observed some prominent patterns in the content and purpose of data visualization. Changes over time, e.g. time series, were part of 43.3% of all studied visualization. Twenty percent and 19.3% included antimicrobial consumption or resistance, respectively. This is not surprising given the importance of these data in the field. It could be worth considering to standardise data visualizations for these data types and contents similar to the consensus of international guidelines committees in the field, e.g. the European Committee of Antimicrobial Susceptibility Testing (EUCAST) or the Clinical & Laboratory Standards Institute (CLSI). This could help ensure high quality data visualizations for reliable insights in AMR- and stewardship-related data. Such initiatives to standardise data visualizations have already been taken by bodies in other fields, e.g. the Intergovernmental Panel on Climate Change (IPCC) [35]. Another example is the development and evaluation of a standardised medical data visualization method based on the ISO13606 data model [36].

Limitations and strengths

This study has several limitations. Despite sampling from a comprehensive set of articles that cover the field of stewardship (antimicrobial stewardship, infection control, and institutional surveillance), only a limited sample of data visualizations were included. Data visualizations for content (attributes) not covered in this study could have been missed. However, the homogeneity of the identified data visualization types suggests that saturation was reached regarding the visual design space in the field. Another limitation is that we included data visualizations from scientific publications and not from other sources relevant to stewardship data visualizers (e.g. data systems used in practice [12,37] and AMR policy reports [38,39]). As a result, our findings might be more applicable to stewardship researchers and data visualization experts than healthcare professionals. Another use of data visualization, namely the exploration of increasingly complex big data, was outside the scope of the included articles [40,41]. Subsequent research into the visual domain context of stewardship should include these additional data visualization sources and applications to ensure a more comprehensive picture for healthcare professionals. Even though the extracted data visualizations were

systematically analysed using a structured assessment form based on existing data visualization nomenclature and categorization [13], the analyses relied on the subjective interpretation and rating by the coding researchers. Several measures were taken to validate our findings, including discussing the assessment form and results within a multidisciplinary team of data-visualization and AMR experts, analysing the interrater-reliability, and comparing our findings to other data visualization studies. Our study is one of the first empirical studies that explores the use of data visualization in stewardship, thereby adding to the few review studies providing primers for data visualization recommendations and best practices in the field of antimicrobial stewardship, infection control, and institutional surveillance [25,26].

Future perspectives

Future research can build upon our results by studying and expanding the use and design of data visualizations beyond the basic visual dictionary provided here. Two important future research directions are elaborated upon below.

Studying the visual domain context is as important as studying data visualizations themselves. This includes studying expectations and customs of the target audience, how this affects their perception and interpretation of data visualizations, and how this consequently impacts their decision-making or behaviour. The importance of assessing visual habits and perceptions in data visualization has been demonstrated before in other medical fields [21,42]. It was shown that personal preferences and the familiarity of a target audience with certain visualization types can result in tensions with data visualization recommendations and novel data visualization approaches. An example is the use of pie charts, which is often discouraged in the data visualization community. The target audience might still favour this type of visualization because of its apparent simplicity, despite the fact that pie charts are less accurately interpreted as angles and wedges are difficult to compare [8,43]. We strongly believe that incorporating best practices and data visualization recommendations are essential but advocate that these should be carefully balanced with visual habits and expectations in the field, and the message to be transported. An exemplary study is published by Aung *et al.* focusing on data visualization interpretation capacity and preferences in their target audience by combining interviews on interpretability and card-sorting of preferred visualizations [21]. Additionally, research is needed to better understand how data visualizations impact the viewers/users in terms of changes in opinions or attitudes that direct decision-making or behaviour changes [44].

In future research special attention should be paid to matching the visual dictionary and the context in which the visualization will be used in terms of users and their tasks and current practices (e.g. studying questions like “What kinds of visualizations are currently used?” and “How do they support to do current tasks?”) [45]. We see a clear parallel with user-centred eHealth design that emphasises the need of a holistic understanding of the interrelations between technology, people and their context [46]. Both qualitative (e.g. interviews) and quantitative (e.g. eye-tracking in current data visualizations) study designs can contribute to such a holistic understanding, which in turn can inform or improve the design of visualizations (or eHealth) in terms of required content, functionalities and usability [47]. Therefore, complementing research on data visualizations, as the current study and many other studies do, with research that primarily focuses on the interaction between people, their context and how data visualizations can support them, is needed [45].

Conclusion

In this study, we analysed the visual domain context of stewardship (antimicrobial stewardship, infection control, and institutional surveillance). We successfully created a visual dictionary that can support the process of creating and using tailor-made data visualizations in the field. Thereby, our results allow data visualization creators to learn the *visual language* of the diverse field of stewardship. As data-driven solutions for stewardship are of increasing importance, effective processes of transforming this data to insights and knowledge is essential. Data visualization supports and enables this transformation and our results can guide the optimal visualization design choices that are grounded on expectations and habits in the field. In the future, our study can provide the basis to further expand the visual dictionary of antimicrobial stewardship towards more effective data visualizations that improve data insights, knowledge, and decision-making.

Acknowledgement

The authors would like to thank Anamaria Crisan, Tamara Munzner, and Nils Gehlenborg for the inspiration provided for this study.

Funding

This research was supported by the INTERREG-VA (202085) funded project EurHealth-1Health (<http://www.eurhealth1health.eu>), part of a Dutch-German cross-border network supported by the European Commission, the Dutch Ministry of Health, Welfare and Sport, the Ministry of Economy, Innovation, Digitalisation and Energy of the German Federal State of North Rhine-Westphalia and the Ministry for National and European Affairs and Regional Development of Lower Saxony. In addition, this study was part of a project funded by the European Union's Horizon 2020 research and innovation programme under the Marie Skłodowska-Curie grant agreement 713660 (MSCA-COFUND-2015-DP "Pronkjewail").

References

- [1] Murdoch TB, Detsky AS. The inevitable application of big data to health care. *JAMA* 2013;309:1351–2. <https://doi.org/10.1001/jama.2013.393>.
- [2] Wang Y, Kung L, Byrd TA. Big data analytics: Understanding its capabilities and potential benefits for healthcare organizations. *Technol Forecast Soc Change* 2018;126:3–13. <https://doi.org/10.1016/j.techfore.2015.12.019>.
- [3] Khan MA-U-D, Ali-ud-din Khan M, Uddin MF, Gupta N. Seven V's of big Data understanding big data to extract value. *Proceedings of the 2014 Zone 1 Conference of the American Society for Engineering Education, Bridgeport, USA; 2014.* <https://doi.org/10.1109/aseezone1.2014.6820689>.
- [4] Ambigavathi M, Sridharan D. Big data analytics in healthcare. *2018 Tenth International Conference on Advanced Computing (ICoAC), Chennai, India; IEEE; 2018.* <https://doi.org/10.1109/icoac44903.2018.8939061>.
- [5] Adam Bohr KM. The rise of artificial intelligence in healthcare applications. *Artificial Intelligence in Healthcare 2020*;25. <https://doi.org/10.1016/B978-0-12-818438-7.00002-2>.
- [6] Bailly S, Meyfroidt G, Timsit J-F. What's new in ICU in 2050: big data and machine learning. *Intensive Care Med* 2018;44:1524–7. <https://doi.org/10.1007/s00134-017-5034-3>.
- [7] Comba JLD. Data visualization for the understanding of COVID-19. *Computing in Science Engineering* 2020;22:81–6. <https://doi.org/10.1109/MCSE.2020.3019834>.
- [8] Evergreen SDH. *Effective data visualization: the right chart for the right data.* Los Angeles: SAGE Publications; 2017.
- [9] Gatto MAC. *Making research useful: current challenges and good practices in data visualisation.* Oxford: Reuters Institute for the Study of Journalism; 2015.
- [10] Kelleher C, Wagener T. Ten guidelines for effective data visualization in scientific publications. *Environmental Modelling & Software* 2011;26:822–7.

- <https://doi.org/10.1016/j.envsoft.2010.12.006>.
- [11] Tuftte ER. The Visual display of quantitative information. Cheshire: Graphics Press; 2001.
- [12] Sedrakyan G, Mannens E, Verbert K. Guiding the choice of learning dashboard visualizations: linking dashboard design and data visualization concepts. *Journal of Computer Languages* 2019;50:19–38. <https://doi.org/10.1016/j.jvlc.2018.11.002>.
- [13] Munzner T. Visualization analysis and design. CRC Press; 2014.
- [14] OECD. Stemming the superbug tide. *OECD Health Policy Studies* 2018:224. <https://doi.org/10.1787/9789264307599-en>.
- [15] World Health Organization. Global antimicrobial resistance surveillance system (GLASS) report: early implementation 2020. Geneva: World Health Organization; 2020.
- [16] World Health Organization. Global action plan on antimicrobial resistance. Geneva: World Health Organization; 2015.
- [17] Dyar OJ, Huttner B, Schouten J, Pulcini C, ESGAP (ESCMID Study Group for Antimicrobial stewardship). What is antimicrobial stewardship? *Clin Microbiol Infect* 2017;23:793–8. <https://doi.org/10.1016/j.cmi.2017.08.026>.
- [18] Dik J-WH, Poelman R, Friedrich AW, Panday PN, Lo-Ten-Foe JR, van Assen S, et al. An integrated stewardship model: antimicrobial, infection prevention and diagnostic (AID). *Future Microbiol* 2016;11:93–102. <https://doi.org/10.2217/fmb.15.99>.
- [19] Luz CF, Berends MS, Dik J-WH, Lokate M, Pulcini C, Glasner C, et al. Rapid analysis of diagnostic and antimicrobial patterns in R (RadaR): interactive open-source software app for infection management and antimicrobial stewardship. *J Med Internet Res* 2019;21:e12843. <https://doi.org/10.2196/12843>.
- [20] Graber CJ, Jones MM, Goetz MB, Madaras-Kelly K, Zhang Y, Butler JM, et al. Decreases in antimicrobial use associated with multihospital implementation of electronic antimicrobial stewardship tools. *Clin Infect Dis* 2020;71:1168–76. <https://doi.org/10.1093/cid/ciz941>.
- [21] Aung T, Niyeha D, Shagihilu S, Mpembeni R, Kaganda J, Sheffel A, et al. Optimizing data visualization for reproductive, maternal, newborn, child health, and nutrition (RMNCH&N) policymaking: data visualization preferences and interpretation capacity among decision-makers in Tanzania. *Glob Health Res Policy* 2019;4:4. <https://doi.org/10.1186/s41256-019-0095-1>.
- [22] Aung T, Niyeha D, Heidkamp R. Leveraging data visualization to improve the use of data for global health decision-making. *J Glob Health* 2019;9:020319. <https://doi.org/10.7189/jogh.09.020319>.
- [23] Crisan A, Gardy JL, Munzner T. A systematic method for surveying data visualizations and a resulting genomic epidemiology visualization typology: GEViT. *Bioinformatics* 2019;35:1668–76. <https://doi.org/10.1093/bioinformatics/bty832>.
- [24] Nusrat S, Harbig T, Gehlenborg N. Tasks, techniques, and tools for genomic data visualization. *Comput Graph Forum* 2019;38:781–805. <https://doi.org/10.1111/cgf.13727>.
- [25] Carroll LN, Au AP, Detwiler LT, Fu T-C, Painter IS, Abernethy NF. Visualization and analytics tools for infectious disease epidemiology: a systematic review. *J Biomed Inform* 2014;51:287–98. <https://doi.org/10.1016/j.jbi.2014.04.006>.
- [26] Salinas JL, Kritzman J, Kobayashi T, Edmond MB, Ince D, Diekema DJ. A primer on data visualization in infection prevention and antimicrobial stewardship. *Infect Control Hosp Epidemiol* 2020;41:948–57. <https://doi.org/10.1017/ice.2020.142>.
- [27] Luz CF, van Niekerk JM, Keizer J, Beerlage-de Jong N, Braakman-Jansen LMA, Stein A, et al. Mapping twenty years of antimicrobial resistance research trends. *Cold Spring Harbor Laboratory* 2021:2021.03.01.433375. <https://doi.org/10.1101/2021.03.01.433375>.
- [28] Roberts ME, Stewart BM, Tingley D. stm: An R package for structural topic models. *Journal of Statistical Software, Articles* 2019;91:1–40. <https://doi.org/10.18637/jss.v091.i02>.
- [29] O'Connor C, Joffe H. Intercoder reliability in qualitative research: Debates and practical

- guidelines. *Int J Qual Methods* 2020;19:160940691989922.
<https://doi.org/10.1177/1609406919899220>.
- [30] Patton MQ. Enhancing the quality and credibility of qualitative analysis. *Health Serv Res* 1999;34:1189–208.
- [31] Galletta A, Carnevale L, Bramanti A, Fazio M. An innovative methodology for big data visualization for telemedicine. *IEEE Trans Ind Inf* 2019;15:490–7.
<https://doi.org/10.1109/TII.2018.2842234>.
- [32] Gotz D, Borland D. Data-driven healthcare: challenges and opportunities for interactive visualization. *IEEE Comput Graph Appl* 2016;36:90–6.
<https://doi.org/10.1109/MCG.2016.59>.
- [33] Cramer F, Shephard GE, Heron PJ. The misuse of colour in science communication. *Nat Commun* 2020;11:5444. <https://doi.org/10.1038/s41467-020-19160-7>.
- [34] Weissgerber TL, Winham SJ, Heinzen EP, Milin-Lazovic JS, Garcia-Valencia O, Bukumiric Z, et al. Reveal, don't conceal: transforming data visualization to improve transparency. *Circulation* 2019;140:1506–18.
<https://doi.org/10.1161/CIRCULATIONAHA.118.037777>.
- [35] Gomis MI, Pidcock R. IPCC visual style guide for authors. Stockholm: Intergovernmental Panel on Climate Change; 2018.
- [36] Kopanitsa G, Veseli H, Yampolsky V. Development, implementation and evaluation of an information model for archetype based user responsive medical data visualization. *Journal of Biomedical Informatics* 2015;55:196–205.
<https://doi.org/10.1016/j.jbi.2015.04.009>.
- [37] Huber TC, Krishnaraj A, Monaghan D, Gaskin CM. Developing an interactive data visualization tool to assess the impact of decision support on clinical operations. *J Digit Imaging* 2018;31:640–5. <https://doi.org/10.1007/s10278-018-0065-z>.
- [38] Anderson M, Clift C, Schulze K, Sagan A, Nahrgang S, Ait Ouakrim D, et al. Averting the AMR crisis: what are the avenues for policy action for countries in Europe? Copenhagen: European Observatory on Health Systems and Policies; 2019.
- [39] World Health Organization. Central Asian and European Surveillance of Antimicrobial Resistance. Geneva: World Health Organization; 2020.
- [40] Fisher D. Big data exploration requires collaboration between visualization and data infrastructures. *Proceedings of the Workshop on Human-In-the-Loop Data Analytics*, New York, NY, USA; Association for Computing Machinery; 2016,1–5.
<https://doi.org/10.1145/2939502.2939518>.
- [41] Kaysi B, Kesler EK. Human Computer Interaction and Visualization Tools in Health Care Services. In: Arabnia HR, Hashemi RR, G. TF, editors. *Proceedings of the International Conference on Information and Knowledge Engineering (IKE)*, Athens, Greece; CSREA Press 2018;55–61.
- [42] Backonja U, Haynes SC, Kim KK. Data visualizations to support health practitioners' provision of personalized care for patients with cancer and multiple chronic conditions: user-centered design study. *JMIR Hum Factors* 2018;5:e11826.
<https://doi.org/10.2196/11826>.
- [43] Cleveland WS, McGill R. Graphical perception: Theory, experimentation, and application to the development of graphical methods. *J Am Stat Assoc* 1984;79:531.
<https://doi.org/10.2307/2288400>.
- [44] Pandey AV, Manivannan A, Nov O, Satterthwaite M, Bertini E. The persuasive power of data visualization. *IEEE Trans Vis Comput Graph* 2014;20:2211–20.
<https://doi.org/10.1109/TVCG.2014.2346419>.
- [45] Lam H, Bertini E, Isenberg P, Plaisant C, Carpendale S. Empirical studies in information visualization: seven scenarios. *IEEE Trans Vis Comput Graph* 2012;18:1520–36.
<https://doi.org/10.1109/TVCG.2011.279>.
- [46] van Gemert-Pijnen L, Kelders SM, Kip H, Sanderman R. *eHealth research, theory and development: a multi-disciplinary approach*. Abingdon: Routledge; 2018.
- [47] Keizer J, Beerlage-De Jong N, Al Naiemi N, van Gemert-Pijnen JEWC. Finding the match between healthcare worker and expert for optimal audit and feedback on

antimicrobial resistance prevention measures. Antimicrob Resist Infect Control 2020;9:125. <https://doi.org/10.1186/s13756-020-00794-7>.

Supplementary materials

S1. Data Visualization Assessment Form

Assessor

- Assessor 1
- Assessor 2

Data visualization ID

▼ ID1 ... ID180

Year article

First impression

- 1: poor
- 2
- 3
- 4
- 5: good

Viz type:

- Violin
- Density plot
- Boxplot
- Histogram
- Scatter plot
- Connected scatter plot
- Bubble plot
- Area plot

- Stacked area plot
- Stream plot
- Line chart
- Ridge line
- Correlogram
- Heatmap
- Dendrogram
- Bar chart
- Stacked bar chart
- Lollipop chart
- Doughnut chart
- Treemap
- Circular packaging plot
- Venn diagram
- Sunburst diagram
- Spider plot
- Sankey diagram
- Network plot
- Chord diagram
- Arc diagram
- Hive plot
- Hierarchical edge bundling
- Other _____
- Combined

Faceting (multiple groups in a grid)

- Yes
- No

Actions

- Analyze
- Search
- Query - Identify
- Query - Compare
- Query - Summarize

Attributes

- 1
- 2
- 3
- 4
- 5
- 6

Attribute names and types

	Attribute name	Attribute type				
	Name	Categorical	Ordinal	Quantitative	NA	Mismatch
Attr. 1		<input type="checkbox"/>	<input type="checkbox"/>	<input type="checkbox"/>	<input type="checkbox"/>	<input type="checkbox"/>
Attr. 2		<input type="checkbox"/>	<input type="checkbox"/>	<input type="checkbox"/>	<input type="checkbox"/>	<input type="checkbox"/>
Attr. 3		<input type="checkbox"/>	<input type="checkbox"/>	<input type="checkbox"/>	<input type="checkbox"/>	<input type="checkbox"/>
Attr. 4		<input type="checkbox"/>	<input type="checkbox"/>	<input type="checkbox"/>	<input type="checkbox"/>	<input type="checkbox"/>
Attr. 5		<input type="checkbox"/>	<input type="checkbox"/>	<input type="checkbox"/>	<input type="checkbox"/>	<input type="checkbox"/>
Attr. 6		<input type="checkbox"/>	<input type="checkbox"/>	<input type="checkbox"/>	<input type="checkbox"/>	<input type="checkbox"/>

Marks

	Points	Lines	Areas	NA	Mismatch
Attr. 1	<input type="checkbox"/>	<input type="checkbox"/>	<input type="checkbox"/>	<input type="checkbox"/>	<input type="checkbox"/>
Attr. 2	<input type="checkbox"/>	<input type="checkbox"/>	<input type="checkbox"/>	<input type="checkbox"/>	<input type="checkbox"/>
Attr. 3	<input type="checkbox"/>	<input type="checkbox"/>	<input type="checkbox"/>	<input type="checkbox"/>	<input type="checkbox"/>
Attr. 4	<input type="checkbox"/>	<input type="checkbox"/>	<input type="checkbox"/>	<input type="checkbox"/>	<input type="checkbox"/>
Attr. 5	<input type="checkbox"/>	<input type="checkbox"/>	<input type="checkbox"/>	<input type="checkbox"/>	<input type="checkbox"/>
Attr. 6	<input type="checkbox"/>	<input type="checkbox"/>	<input type="checkbox"/>	<input type="checkbox"/>	<input type="checkbox"/>

Channels / position	Horizontal	Vertical	Both	NA	Mismatch
Attr. 1	<input type="checkbox"/>	<input type="checkbox"/>	<input type="checkbox"/>	<input type="checkbox"/>	<input type="checkbox"/>
Attr. 2	<input type="checkbox"/>	<input type="checkbox"/>	<input type="checkbox"/>	<input type="checkbox"/>	<input type="checkbox"/>
Attr. 3	<input type="checkbox"/>	<input type="checkbox"/>	<input type="checkbox"/>	<input type="checkbox"/>	<input type="checkbox"/>

Attr. 4	<input type="checkbox"/>	<input type="checkbox"/>	<input type="checkbox"/>	<input type="checkbox"/>	<input type="checkbox"/>
Attr. 5	<input type="checkbox"/>	<input type="checkbox"/>	<input type="checkbox"/>	<input type="checkbox"/>	<input type="checkbox"/>
Attr. 6	<input type="checkbox"/>	<input type="checkbox"/>	<input type="checkbox"/>	<input type="checkbox"/>	<input type="checkbox"/>

Channels / colour - shape - tilt

	Color	Shape	Tilt	NA	Mismatch
Attr. 1	<input type="checkbox"/>	<input type="checkbox"/>	<input type="checkbox"/>	<input type="checkbox"/>	<input type="checkbox"/>
Attr. 2	<input type="checkbox"/>	<input type="checkbox"/>	<input type="checkbox"/>	<input type="checkbox"/>	<input type="checkbox"/>
Attr. 3	<input type="checkbox"/>	<input type="checkbox"/>	<input type="checkbox"/>	<input type="checkbox"/>	<input type="checkbox"/>
Attr. 4	<input type="checkbox"/>	<input type="checkbox"/>	<input type="checkbox"/>	<input type="checkbox"/>	<input type="checkbox"/>
Attr. 5	<input type="checkbox"/>	<input type="checkbox"/>	<input type="checkbox"/>	<input type="checkbox"/>	<input type="checkbox"/>
Attr. 6	<input type="checkbox"/>	<input type="checkbox"/>	<input type="checkbox"/>	<input type="checkbox"/>	<input type="checkbox"/>

Attr. 4	<input type="checkbox"/>	<input type="checkbox"/>	<input type="checkbox"/>	<input type="checkbox"/>	<input type="checkbox"/>	<input type="checkbox"/>
Attr. 5	<input type="checkbox"/>	<input type="checkbox"/>	<input type="checkbox"/>	<input type="checkbox"/>	<input type="checkbox"/>	<input type="checkbox"/>
Attr. 6	<input type="checkbox"/>	<input type="checkbox"/>	<input type="checkbox"/>	<input type="checkbox"/>	<input type="checkbox"/>	<input type="checkbox"/>

Describe what is visualized:

Interpretability without text

- 1 Not at all
- 2 Partially
- 3 Yes

Choice of plot type

- 1: poor
- 2
- 3
- 4
- 5: good

What can be improved?

Remarks (e.g. chart junk)

Last impression

- 1: poor
- 2
- 3
- 4
- 5: good

S2. Visualization types per attribute

Table S2

Attribute	Line chart	Bar chart	Stacked bar chart	Dendrogram	Forest plot	Range plot	Bubble plot	Pie chart	Tornado plot	Scatter plot	Bma image plot	Heatmap	Stacked area plot	Correlogram
Antimicrobial	31.03%	34.48%	24.14%					6.90%			3.45%			
Antimicrobial consumption	46.15%	23.08%	25.64%					2.56%		2.56%				
Bacteria	8.33%	58.33%	8.33%				8.33%					8.33%	8.33%	
Case			16.67%	16.67%		66.67%								
Confidence Interval	18.18%	27.27%			45.45%					9.09%				
Cohort	20.00%	40.00%	20.00%			20.00%								
Compliance	11.11%	77.78%	11.11%											
Cost	40.00%								40.00%	20.00%				
Count	14.81%	33.33%	18.52%		3.70%	7.41%	14.81%			7.41%				
Cut-off	30.77%	15.38%		15.38%	15.38%		7.69%		7.69%	7.69%				
Diagnosis		44.44%	33.33%				11.11%	11.11%						
Error		80.00%				20.00%								
Event	25.00%	25.00%	25.00%		8.33%	16.67%								
Incidence	37.04%	22.22%	22.22%		3.70%	7.41%				3.70%			3.70%	
Numeric value	47.83%	26.09%			13.04%	4.35%				4.35%	4.35%			

Percentage	7.41%	51.85%	22.22%		3.70%		11.11%		3.70%		
Regression	62.50%						12.50%		25.00%		
Resistance	35.14%	40.54%	10.81%		2.70%		5.41%		5.41%		
Sample		8.33%	8.33%	50.00%		16.67%			8.33%	8.33%	
Setting	15.22%	41.30%	19.57%	2.17%	8.70%	4.35%	2.17%		4.35%	2.17%	
Similarity				80.00%						10.00%	10.00%
Statistics	33.33%	33.33%				16.67%			8.33%		8.33%
Survey answer		50.00%	37.50%				12.50%				
Time	52.63%	25.00%	10.53%			6.58%	2.63%		1.32%		1.32%

S3. Visual characteristics per attribute

Table S3

Attribute	Channel - position			Channel - marks			Channel - colour/shape/tilt			Channel - size		
	Horizontal	Vertical	Both	Areas	Lines	Points	Color	Shape	Tilt	Area	Length	Volume
Antimicrobial	72.73%	27.27%					64.71%	35.29%				
Antimicrobial consumption	3.13%	96.88%		3.03%	48.48%	48.48%	33.33%	66.67%		6.25%	93.75%	
Bacteria	71.43%	14.29%	14.29%				80.00%	20.00%				
Case	20.00%	80.00%										
Confidence interval	60.00%	30.00%	10.00%		81.82%	18.18%		100.00%			100.00%	
Cohort	40.00%	60.00%				100.00%	75.00%	25.00%				
Compliance		100.00%			83.33%	16.67%	100.00%				100.00%	
Cost	40.00%	60.00%			50.00%	50.00%					100.00%	
Count	23.81%	76.19%		5.26%	63.16%	31.58%	100.00%			18.75%	75.00%	6.25%
Cut-off	66.67%	11.11%	22.22%	12.50%	75.00%	12.50%	100.00%			50.00%	50.00%	
Diagnosis	80.00%	20.00%					75.00%	25.00%				
Error	40.00%	60.00%			100.00%		100.00%				100.00%	
Event	100.00%				33.33%	66.67%	25.00%	75.00%			100.00%	
Incidence	8.70%	91.30%		5.00%	45.00%	50.00%	28.57%	71.43%		9.09%	90.91%	
Numeric value	55.00%	40.00%	5.00%	6.67%	40.00%	53.33%				33.33%	66.67%	
Percentage	34.78%	60.87%	4.35%	12.50%	75.00%	12.50%	66.67%	33.33%		8.70%	78.26%	13.04%
Regression		71.43%	28.57%		71.43%	28.57%	33.33%	66.67%				
Resistance	7.41%	92.59%		3.70%	51.85%	44.44%	77.78%	22.22%		7.14%	92.86%	
Sample		100.00%					100.00%					
Setting	60.87%	39.13%			33.33%	66.67%	59.38%	40.63%				
Similarity	100.00%				100.00%						100.00%	
Statistics	22.22%	77.78%			50.00%	50.00%	66.67%	33.33%			100.00%	
Survey answer	40.00%	60.00%				100.00%	75.00%	25.00%				
Time	100.00%				100.00%		55.56%	33.33%	11.11%		100.00%	

S4. Channel effectiveness for quantitative, ordinal and categorical attributes

Table S4

Effectiveness	Quantitative	Ordinal	Categorical
Position on common scale	82.8%	83.0%	
Position on unaligned scale	1.1%	1.0%	
Length (1D size)	3.4%	2.0%	
Area (2D size)	6.7%	2.0%	
Depth (3D position)	0.4%		
Color luminance/ Color saturation	5.6%	12.0%	
Spatial position			1.3%
Color hue			68.9%
Shape			29.8%

S5. Problems and illustrative quotes.

Table S5. Problems and illustrative quotes

Code (axial)	Code (open)	Illustrative quotes	Count
Missing labels, annotations, legend and/or abbreviation explanations	Legend/caption is missing/unclear	Legend is missing.	26
	Labels for lines/points are missing/unclear	Line is not labeled and it is unclear what it represents.	23
	Labels for axes are missing/unclear	Y-axis label is missing.	20
	Annotation/direct labeling overflow	Difficult to read which sites are statistically significantly different.	14
	Abbreviations not explained	Abbreviations not explained.	12
	Use of colours not explained	Not clear what colours mean in visualization.	7
Subtotal			102
Axes not readable	Axis intervals uneven (within visualization and between faceted visualizations)	Plots use different y-axis, so it is difficult to compare them.	17
	Axes texts not clearly readable	Too much text in y-axis labels.	11
	Too short/dense axes/intervals	Lines are cut above 100.	5
	Uneven bar placement	White separation lines not shown for each bar.	1
	Axis intervals unlogical (within visualization and between faceted visualizations)	X-axis intervals are not easy to read/compare.	1
Subtotal			35
Colour scheme mismatch	Groups not distinguishable by	Use of similar colours, so hard to	14

	colours	distinguish.	
	Non-intuitive colour schemes used	Counter-intuitive coding (colour luminance levels for min max should be switched).	6
	Categorical colours used for ordered attribute	Mismatch of categorical colours for order attribute.	5
	Groups not distinguishable from background	Colour for one group should not be the same as background (white).	2
		Subtotal	27
Hidden data points by overlaps	Overlap of shapes problematic	Points could be double, but not differentiable because of overlap.	7
		Subtotal	7
Using suboptimal channel effectiveness	Groups not distinguishable by shapes	Shapes are very difficult to differentiate.	12
	Sub-effective channel is chosen	Shape/annotation not most effective in distinguishing between colonized/infected (colour higher effectiveness)	3
		Subtotal	15
Size scale indistinguishable	Differences in size not clear	Standard errors difficult to read (too small).	10
	Groups not distinguishable by shape size	Difference in study weight (represented with square size) not readable.	3
	Contrasts between groups not clear	Difficult to follow one patient line.	2
		Subtotal	15
Missing channel	Line types not used to distinguish between groups	Different line types could improve distinguishing the different groups.	2
	Colors not used to compare between visualization/groups	Colours could have been used to make comparison of isolates across groups easier.	2
		Subtotal	4
Visualization type does not (optimally) fit data	Other visualization type preferred	Too many categories for the plot type (e.g. bar chart) would be better).	21
		Subtotal	21
Data points/lines on double axes	Double Y-axes difficult to read	Double y-axis confuse (not easy to apprehend which line is on which axis).	11
		Subtotal	11
Channel overflow	Double use of shape and colour	Unnecessary use of two channels for one attribute.	8
	Unnecessary use of shape sizes	Unequal size of point marks (without meaning).	1
	Unnecessary use of colour	Unnecessary colour channel for intervention period.	1
	Too many colours	Too many colours.	1
		Subtotal	11
Attribute overflow	Too many attributes	Plot is overloaded with attributes.	2
	Relating attributes that are not	Stacked bar chart used for unrelated	1

	related	attributes (stacking does not make sense)	
			Subtotal 3
Information sparsity	Could be text	Almost too little information.	1
			Subtotal 1
Incoherent ordering	Data not ordered coherently	Colonized/infected not consequently ordered in bars.	1
			Subtotal 1
			Grand Total 253