

# The Clinicogenomic Landscape of Induction Failure in Childhood and Young Adult T-Cell Acute Lymphoblastic Leukemia

O'Connor, David; Demeulemeester, Jonas; Conde, Lucia; Kirkwood, Amy; Fung, Kent; Papaleonidopoulou, Foteini; Bloye, Gianna; Farah, Nadine; Rahman, Sunniyat; Hancock, Jeremy; Bateman, Caroline; Inglott, Sarah; Mee, Jon; Herrero, Javier; Van Loo, Peter; Moorman, Anthony V; Vora, Ajay; Mansour, Marc R

DOI:

[10.1200/JCO.22.02734](https://doi.org/10.1200/JCO.22.02734)

License:

Creative Commons: Attribution (CC BY)

## Document Version

Publisher's PDF, also known as Version of record

## Citation for published version (Harvard):

O'Connor, D, Demeulemeester, J, Conde, L, Kirkwood, A, Fung, K, Papaleonidopoulou, F, Bloye, G, Farah, N, Rahman, S, Hancock, J, Bateman, C, Inglott, S, Mee, J, Herrero, J, Van Loo, P, Moorman, AV, Vora, A & Mansour, MR 2023, 'The Clinicogenomic Landscape of Induction Failure in Childhood and Young Adult T-Cell Acute Lymphoblastic Leukemia', *Journal of Clinical Oncology*, vol. 41, no. 19, pp. 3545-3556.  
<https://doi.org/10.1200/JCO.22.02734>

[Link to publication on Research at Birmingham portal](#)

## General rights

Unless a licence is specified above, all rights (including copyright and moral rights) in this document are retained by the authors and/or the copyright holders. The express permission of the copyright holder must be obtained for any use of this material other than for purposes permitted by law.

- Users may freely distribute the URL that is used to identify this publication.
- Users may download and/or print one copy of the publication from the University of Birmingham research portal for the purpose of private study or non-commercial research.
- User may use extracts from the document in line with the concept of 'fair dealing' under the Copyright, Designs and Patents Act 1988 (?)
- Users may not further distribute the material nor use it for the purposes of commercial gain.

Where a licence is displayed above, please note the terms and conditions of the licence govern your use of this document.













When citing, please reference the published version.

## Take down policy

While the University of Birmingham exercises care and attention in making items available there are rare occasions when an item has been uploaded in error or has been deemed to be commercially or otherwise sensitive.

If you believe that this is the case for this document, please contact [UBIRA@lists.bham.ac.uk](mailto:UBIRA@lists.bham.ac.uk) providing details and we will remove access to the work immediately and investigate.

# The Clinicogenomic Landscape of Induction Failure in Childhood and Young Adult T-Cell Acute Lymphoblastic Leukemia

David O'Connor, PhD, MBChB<sup>1,2</sup> ; Jonas Demeulemeester, PhD<sup>3,4,5</sup> ; Lucia Conde, PhD<sup>1</sup> ; Amy Kirkwood, MSc<sup>6</sup>; Kent Fung, PhD<sup>1</sup> ; Foteini Papaleonidopoulou, MSc<sup>1,3</sup> ; Gianna Bloye, MSc<sup>1</sup> ; Nadine Farah, PhD, MBChB<sup>1</sup> ; Sunniyat Rahman, PhD<sup>1,7,8</sup> ; Jeremy Hancock, PhD<sup>9</sup>; Caroline Bateman, PhD, MBBS<sup>10</sup> ; Sarah Inglott, BSc<sup>2</sup>; Jon Mee, BSc<sup>11</sup>; Javier Herrero, PhD<sup>1</sup> ; Peter Van Loo, PhD<sup>3,12,13</sup>; Anthony V. Moorman, PhD<sup>14</sup> ; Ajay Vora, MD<sup>2</sup> ; and Marc R. Mansour, PhD, MBChB<sup>1,15</sup>

DOI <https://doi.org/10.1200/JCO.22.02734>

## ABSTRACT

**PURPOSE** Failure to respond to induction chemotherapy portends a poor outcome in childhood acute lymphoblastic leukemia (ALL) and is more frequent in T-cell ALL (T-ALL) than B-cell ALL. We aimed to address the limited understanding of clinical and genetic factors that influence outcome in a cohort of patients with T-ALL induction failure (IF).

**METHODS** We studied all cases of T-ALL IF on two consecutive multinational randomized trials, UKALL2003 and UKALL2011, to define risk factors, treatment, and outcomes. We performed multiomic profiling to characterize the genomic landscape.

**RESULTS** IF occurred in 10.3% of cases and was significantly associated with increasing age, occurring in 20% of patients age 16 years and older. Five-year overall survival (OS) rates were 52.1% in IF and 90.2% in responsive patients ( $P < .001$ ). Despite increased use of nelarabine-based chemotherapy consolidated by hematopoietic stem-cell transplant in UKALL2011, there was no improvement in outcome. Persistent end-of-consolidation molecular residual disease resulted in a significantly worse outcome (5-year OS, 14.3% v 68.5%; HR, 4.10; 95% CI, 1.35 to 12.45;  $P = .0071$ ). Genomic profiling revealed a heterogeneous picture with 25 different initiating lesions converging on 10 subtype-defining genes. There was a remarkable abundance of TAL1 noncoding lesions, associated with a dismal outcome (5-year OS, 12.5%). Combining TAL1 lesions with mutations in the MYC and RAS pathways produces a genetic stratifier that identifies patients highly likely to fail conventional therapy (5-year OS, 23.1% v 86.4%; HR, 6.84; 95% CI, 2.78 to 16.78;  $P < .0001$ ) and who should therefore be considered for experimental agents.

**CONCLUSION** The outcome of IF in T-ALL remains poor with current therapy. The lack of a unifying genetic driver suggests alternative approaches, particularly using immunotherapy, are urgently needed.

## ACCOMPANYING CONTENT

 [Data Supplement](#)

 [Protocol](#)

Accepted March 6, 2023

Published April 25, 2023

J Clin Oncol 41:3545-3556

© 2023 by American Society of Clinical Oncology



[View Online Article](#)

Licensed under the Creative Commons Attribution 4.0 License

## INTRODUCTION

T-cell acute lymphoblastic leukemia (T-ALL) is an aggressive malignancy comprising 10%–15% of childhood ALL.<sup>1</sup> Although most children are cured, outcomes remain inferior to B-cell ALL (B-ALL), particularly in relapsed and refractory disease.<sup>2</sup> Failure to respond to induction therapy, on the basis of morphologic assessment, has long been recognized as a predictor of poor outcome.<sup>3</sup> Previously, we redefined induction failure (IF), demonstrating that a level of molecular minimal residual disease (MRD) above 5%, even in

the absence of morphologic blasts, more accurately identifies IF, selecting 10% of T-ALL cases, 3-fold more than in B-ALL.<sup>4</sup> Historically, IF in T-ALL was demonstrated to have a particularly dismal outcome with a 10-year survival rate of only 19% in a large international study.<sup>3</sup> Although there has been an improvement in outcome with survival around 50% in contemporary trials,<sup>4,5</sup> better treatments are clearly needed.

Despite the preponderance of IF in T-ALL, little is known about the factors that predict resistance and influence

## CONTEXT

### Key Objective

What clinical and genomic factors predict occurrence and outcome of induction failure (IF) in childhood and young adult T-cell acute lymphoblastic leukemia (T-ALL)?

### Knowledge Generated

Incidence of IF increases with age and is associated with an immature leukemia dominated by the early thymic precursor phenotype and HOXA genetic subtype. Outcome is worse in patients with leukemias of the TAL1 subtype or carrying mutations in the RAS or MYC pathways, indicating novel therapies are required in this group.

### Relevance (S. Bhatia)

The heterogeneity in the genetic landscape of T-ALL patients with IF and the very poor outcome with current therapy present a critical need for novel therapies in this population.\*

\*Relevance section written by JCO Associate Editor Smita Bhatia, MD, MPH, FASCO.

outcome, largely because patients are taken off trial, limiting details of subsequent treatment and response. Although our group and others have identified genetic drivers of IF in B-ALL, facilitating use of targeted therapies,<sup>4,6,7</sup> the genomic landscape of IF T-ALL remains undefined, restricting treatment to conventional agents. Furthermore, no genetic biomarker has been associated with poor outcome in T-ALL, limiting the potential for treatment stratification.

To address this, to our knowledge, we present the largest cohort of T-ALL IF reported, comprising all IF cases on two large multinational randomized trials, UKALL2003 and UKALL2011, which recruited 5,876 patients over a 15-year period. We used existing trial data, supplemented with additional clinical data, and combined whole-genome sequencing (WGS) and RNA-sequencing (RNAseq), to comprehensively characterize the clinical and functional genetic landscape of T-ALL IF.

## METHODS

### Patients

The study uses two patient cohorts (Fig 1A). The trial cohort includes all 5,876 patients treated on the UKALL2003 and UKALL2011 trials, of whom 70 had T-ALL IF (combined median follow-up of 8.6 years [IQR, 5.5-10.5]). Both trials were conducted in accordance with the Declaration of Helsinki. Patients were enrolled at individual treatment centers by principal investigators after written informed consent from carers or patients was obtained. UKALL2003 was approved by the Scottish Multi-Centre Research Ethics Committee. UKALL2011 was approved by the North Thames Research Ethics Committee. The genomics cohort includes all patients with T-ALL IF from the trial cohort with samples available (n = 35) plus an additional 13 patients treated on nontrial protocols with identical induction therapy.

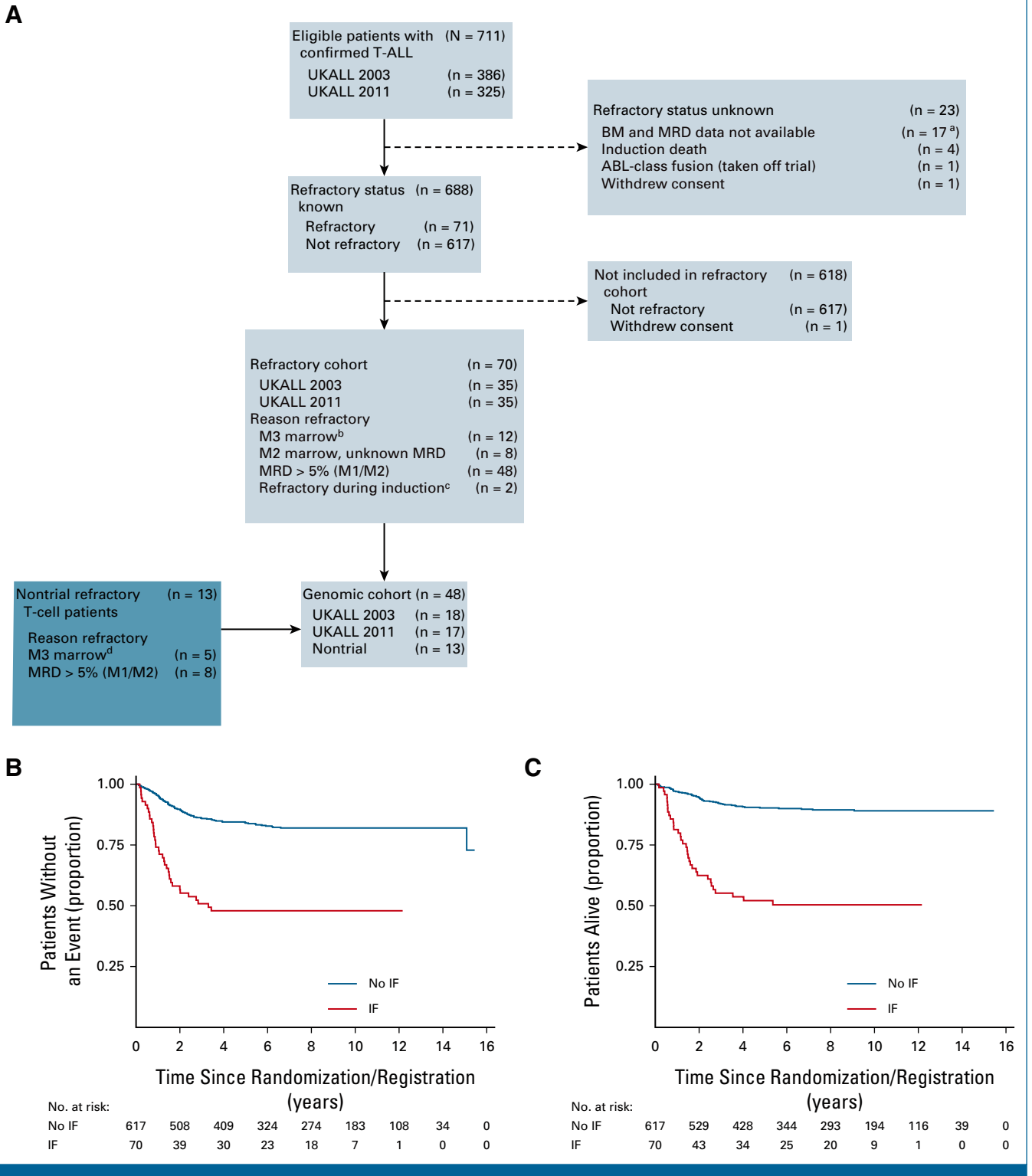
The responsive patient cohort used for comparison comprised 264 patients with T-ALL treated on the COG AALL0434 trial,<sup>5</sup> all of whom responded to induction chemotherapy, that is, did not suffer IF. This group has been extensively characterized using a combination of WGS, whole-exome sequencing, RNAseq, conventional cytogenetics, and SNP array as previously reported.<sup>8</sup> Samples were also subjected to targeted sequencing at noncoding hotspots.

IF was defined as end-of-induction (EOI) MRD  $\geq 5\%$ , irrespective of morphology, or an M2 or M3 marrow (morphologic blasts 5%-25% or  $>25\%$ , respectively) without an MRD result, as per our previous study<sup>4</sup> and reflecting the current definition used in contemporary clinical trials, such as the ALLTogether-01 study. Choice of subsequent therapy was discussed with the trial PI and left to the discretion of the treating center.

### UKALL2003 (ISRCTN Number 07355119) and UKALL2011 (ISRCTN Number 64515327)

UKALL2003 and UKALL2011 recruited children and young people (age 1-24 years) with ALL in the United Kingdom and Ireland between October 2003 and December 2018. The results of both UKALL2003<sup>9,10</sup> and UKALL2011<sup>11,12</sup> have been reported, with further details and full protocols available in the Data Supplement (online only).

Induction therapy was identical across both trials comprising dexamethasone, vincristine, pegylated L-asparaginase, and daunorubicin. In UKALL2003, patients with morphologic IF (M3 marrow) were taken off trial. From 2008, in recognition of poor prognosis, patients with MRD  $>10\%$  were also recommended to be treated off trial. In UKALL2011, patients with M3 marrow and/or MRD high risk (day 29  $>5\%$  or week 14  $>0.5\%$ ) were taken off trial.



**FIG 1.** T-ALL IF cohorts and outcome. (A) Seventy-one patients of the 711 patients with T-ALL on the UKALL2003 and UKALL2011 trials suffered IF. One patient withdrew consent and was excluded from further analyses, leaving 70 cases in the trial cohort. Thirty-five of these patients were included in the genomics cohort with an additional 13 nontrial IF cases. (B) Kaplan-Meier curve showing event-free survival for patients with IF versus those who achieved remission on the UKALL2003 and UKALL2011 trials. (C) Kaplan-Meier curve showing overall survival for patients with IF versus those who achieved remission on the UKALL2003 and UKALL2011 trials. <sup>a</sup>Includes 16 UKALL 2003 patients in CR but with no details and one UKALL 2011 patient with no data postregistration submitted. <sup>b</sup>Any MRD. <sup>c</sup>Rising WCC, switched treatment before D28. <sup>d</sup>Any MRD. BM, bone marrow; CR, complete remission; IF, induction failure; MRD, minimal residual disease; T-ALL, T-cell acute lymphoblastic leukemia; WCC, white cell count.

## Samples

Samples were largely provided as frozen viable mononuclear cells, which were thawed and used for flow cytometric characterization to ascertain early thymic precursor (ETP) status, and DNA and RNA extraction.

## Sequencing

WGS was performed by Novogene Company Ltd (Cambridge) using Illumina sequencing to generate 150-base-pair paired-end reads on all samples at 50× coverage in tumor samples and 30× in germline samples. Total RNAseq was performed to generate 30 million 150-base-pair paired-end reads per sample.

Further details of sample processing, sequencing, and data analysis are provided in the Data Supplement.

## RESULTS

### Clinical Features

UKALL2003 and UKALL2011 recruited 5,876 patients between 2004 and 2019, of whom 711 (12.1%) had T-ALL; 688 were assessable at EOI. In total, 10.3% of patients with T-ALL experienced IF ( $n = 71$ ; Fig 1A). Survival was significantly worse in IF (5-year event-free survival [EFS], 47.9% [95% CI, 35.8 to 59.1] v 84.0% [95% CI, 80.7 to 86.8]; HR, 4.14 [95% CI, 2.82 to 6.07];  $P < .001$ ; Fig 1B; 5-year overall survival [OS], 52.1% [95% CI, 39.7 to 63.1] v 90.2% [95% CI, 87.4 to 92.5]; HR, 6.38 [95% CI, 4.17 to 9.76];  $P < .001$ ; Fig 1C).

Multivariable assessment of factors associated with IF revealed a significant relationship with increasing age; IF occurred in 5.6% of patients younger than 10 years, 12.9% age 10–16 years, and 20% older than 16 years ( $P < .001$ ; Data Supplement [Table A1]).

Since most patients with IF were treated off protocol, additional data were obtained on subsequent nontrial therapy from treating centers. Importantly, although patients failed to remit with induction therapy, only four patients never achieved remission, with all others responding to subsequent treatment. Postinduction therapy varied across the cohort but mainly followed two pathways, either continuation of the standard protocol or escalation to a nelarabine-containing regimen, most commonly in combination with cyclophosphamide and cytarabine as per COG AALL0434 consolidation,<sup>5</sup> followed by hematopoietic stem-cell transplantation (HSCT; Fig 2A).

In line with international practice, there was a clear trend toward increasing use of nelarabine over time. Earlier patients treated on UKALL2003 commonly remained on standard trial chemotherapy (74.2%; 26/35) as most (63%; 22/35) were in a morphologic remission with molecular MRD > 5%; at this point, the IF definition did not include MRD and these patients

were therefore considered to be in remission. By contrast, later patients, on UKALL2011, were frequently treated with nelarabine and HSCT (68.6%; 24/35;  $P = .0007$ ). However, this did not translate into an improved outcome across the two trials (Data Supplement [Tables A2 and A3]). Accordingly, analyses of individual treatments showed no difference in outcome for patients who received nelarabine compared with those who did not (5-year OS, 39.1% [95% CI, 20.3 to 57.5] v 59.2% [95% CI, 43.3 to 72.0]; HR, 1.72 [95% CI, 0.88 to 3.42];  $P = .11$ ; Data Supplement [Table A4]) or those who underwent HSCT compared with those who did not (5-year OS, 52.8% [95% CI, 34.3 to 68.4] v 61.3% [95% CI, 42.0 to 75.9]; HR, 1.23 [95% CI, 0.58 to 2.58];  $P = .59$ ; Figs 2B and 2C). Although these were nonrandomized groups, with patients undergoing HSCT having higher levels of MRD (Data Supplement [Table A5]), the lack of improvement in outcome over time, despite the marked increased use of nelarabine and HSCT, suggests these approaches fail to overcome this high-risk disease. Notably, patients who relapsed after IF had a dismal outcome, with a median survival of only 3.9 months (IQR, 1.5–7.6; Data Supplement [Fig A1]).

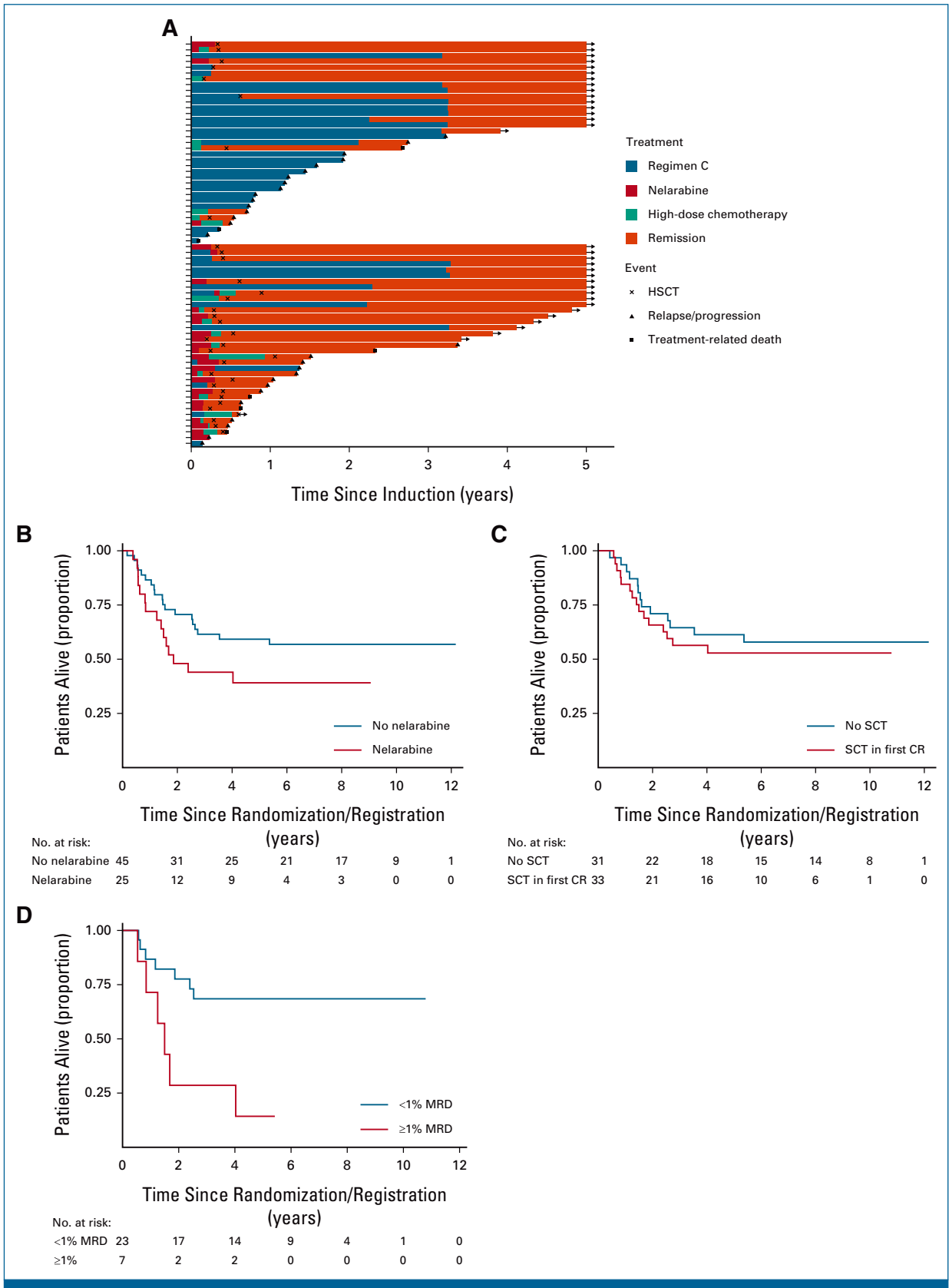
Univariable and multivariable analyses of factors associated with outcome found no impact of age, white cell count, EOI morphology or MRD, or trial (Data Supplement [Tables A2 and A3]). However, a higher end-of-consolidation (EOC) MRD level was associated with inferior EFS (HR [1 log increase], 1.30 [95% CI, 1.06 to 1.55];  $P = .011$ ; Data Supplement [Table A6]). Patients with  $\geq 1\%$  EOC MRD had a 4-fold increased risk of death (5-year OS, 14.3% v 68.5%; HR, 4.10 [95% CI, 1.35 to 12.45];  $P = .0071$ ; Fig 2D) with only one of seven patients achieving long-term remission, despite all undergoing HSCT. By contrast, of the nine patients with MRD < 0.01%, eight of whom underwent HSCT, none relapsed but two died from HSCT-related mortality.

### Genetic Classification

Previously, we identified *PDGFRB* fusions as a major driver of B-ALL IF, allowing the use of targeted therapy.<sup>4</sup> To identify analogous targetable lesions in T-ALL IF, we performed WGS on 48 cases (Fig 1A); 33 cases had paired germline material available, and 37 cases underwent RNAseq (Data Supplement [Table A7]). The outcomes and characteristics of the genomic cohort were representative of the full IF cohort (Data Supplement [Table A8 and Fig A2]).

We initially focused on classification of samples to conventional phenotypic and genetic subtypes. Flow cytometric analysis allowed identification of cases with an ETP phenotype, indicating a less differentiated, stem cell–like leukemia.<sup>13</sup> Twenty-two of 46 cases (48%) with informative results had an ETP phenotype, significantly higher than the 10% of cases reported in responsive T-ALL ( $P < .001$ ; Fig 3A).<sup>8</sup>

Historically, classification of T-ALL into genetic subtypes has relied on dysregulated expression of key transcription factor genes and hierarchical clustering of gene expression



**FIG 2.** Treatment of T-ALL IF. (A) Swimmer plot displaying postinduction treatment of patients with IF split by trial. Standard chemotherapy indicates standard trial treatment. Nelarabine indicates nelarabine given either alone or in combination with other agents. High-dose chemotherapy indicates other non-nelarabine-containing regimens, most commonly FLA-IDA. (B) Kaplan-Meier plot showing OS of patients treated with nelarabine versus those not treated with nelarabine. (C) Kaplan-Meier plot showing OS of patients who received SCT versus those who did not. The SCT group included 33 patients (continued on following page)

**FIG 2.** (Continued). (one excluded as underwent SCT when not in remission). The no SCT group included all 31 patients who remitted and were alive and in remission on day 91 (the date of the earliest SCT). (D) Kaplan-Meier plot showing OS of patients with end-of-consolidation MRD more than 1% versus MRD < 1%. CR, complete remission; FLA-IDA, fludarabine, cytarabine, idarubicin chemotherapy; HSCT, hematopoietic stem-cell transplantation; IF, induction failure; MRD, minimal residual disease; OS, overall survival; SCT, stem-cell transplant; T-ALL, T-cell acute lymphoblastic leukemia.

data.<sup>14</sup> More recently, as with B-ALL and AML,<sup>15,16</sup> there has been a progressive shift toward a system predicated on causative genomic lesions. WGS enables comprehensive interrogation of the genomic landscape permitting definitive allocation through detection of subtype-defining genetic lesions (Data Supplement [Fig A3]). Using this approach, initiating lesions were identified in 41 cases (85%), allowing allocation to conventional T-ALL genetic subgroups (Fig 3B). The genes involved, in decreasing order of frequency, were *TLX3* (n = 9), *TAL1* (n = 8), *LMO1* (n = 6), the *HOXA* locus (n = 6), *KMT2A* (n = 5), *LMO2* (n = 4), *MYC* (n = 4), *MLL10* (n = 3), *NUP98* (n = 3), and *NUP214* (n = 3). A single case had an *ETV6-NCOA2* fusion, a previously described driver of T/myeloid leukemia.<sup>17</sup> Notably, all *TAL1* cases co-occurred with either a *LMO1* or *LMO2* lesion, with *LMO1* lesions significantly more frequent in IF than in responsive cases (10.4% v 1.5%; *P* = .006). No driver lesion could be identified in the remaining seven cases, six of which could be allocated to genetic subgroups using RNAseq.

The relative proportion of genetic subtypes differed significantly between responsive and IF cases (Fig 3C). IF was restricted to the *HOXA*, *TAL1*, *TLX3*, and *LMO2/LYL1* subtypes, with almost half the cases allocated to the *HOXA* subtype, a significantly larger proportion than in responsive T-ALL (*P* < .001; Fig 3C). By contrast, there were significantly fewer *TAL1* cases (*P* = .026) with no *TLX1*, *TAL2*, or *NKX2-1* cases whatsoever, in keeping with the good prognosis reported in these subtypes. There was clear correlation between ETP status and genetic subtype; 75% of *HOXA* cases had an ETP phenotype, whereas 74% of *TAL1*, *LMO2/LYL1*, and T-other cases were non-ETP (*P* = .002).

Although the overall proportion of *TAL1* cases was lower in IF, there was an unexpected dominance of noncoding *TAL1* enhancer mutations. Although present in responsive cases, these only account for 24.6% of *TAL1* cases, with *TAL1* more commonly driven by the *STIL-TAL1* deletion.<sup>8,18</sup> The converse is seen in the IF cases, with noncoding mutations accounting for 87.5% of *TAL1* cases, indicating a previously unrecognized link with treatment resistance (*P* < .001; Fig 3D). As characterized previously, the majority of mutations created novel binding sites for the transcription factor MYB (Data Supplement [Fig A4]).<sup>18,19</sup>

### Co-Operating Genetic Variants

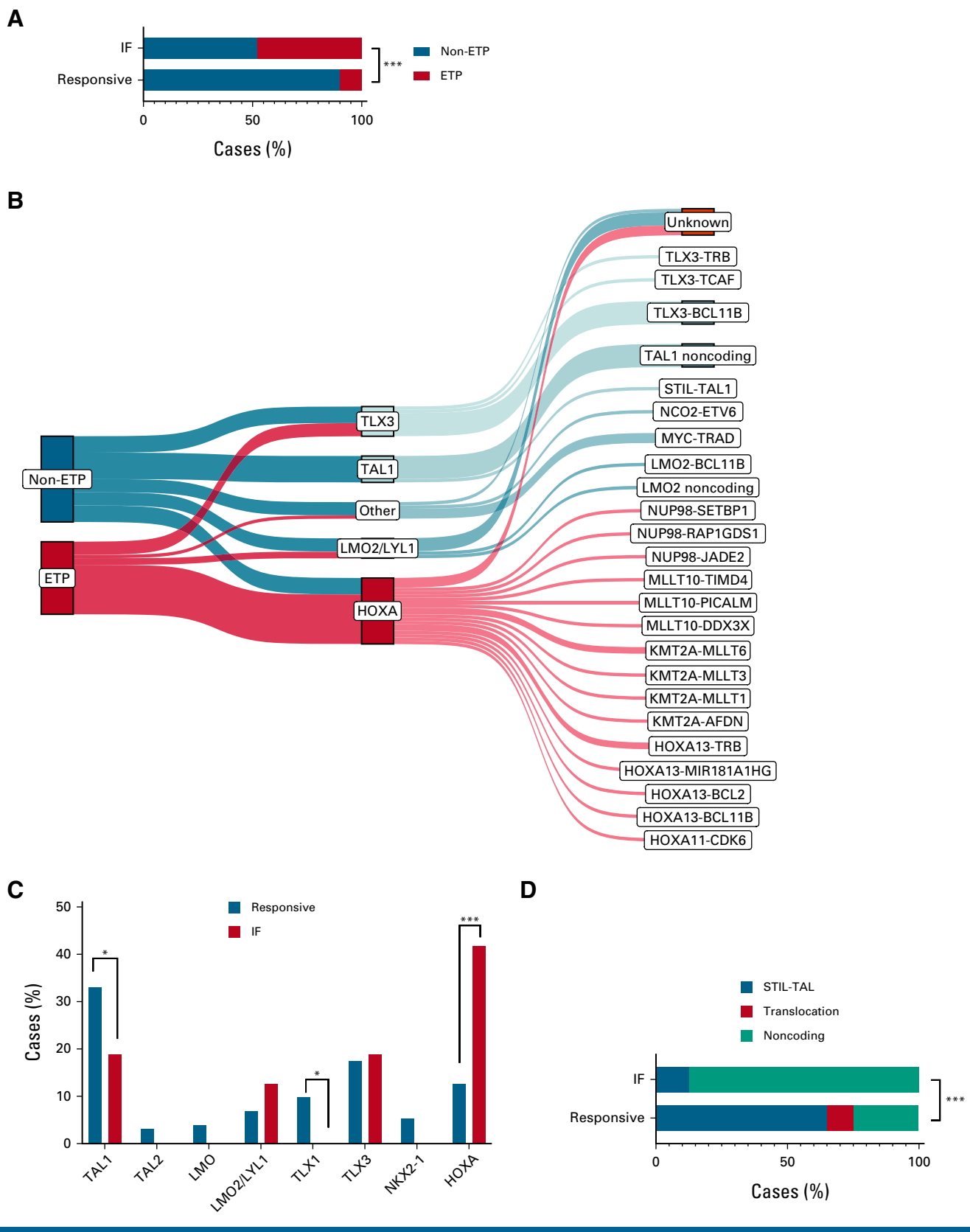
There was a median of 21 coding, nonsynonymous SNV/indels (range, 4-144) per sample; the sample with the highest number of mutations had a somatic missense *MSH2*

mutation, likely to result in acquired mismatch repair deficiency (Data Supplement [Tables A9-A11]). Driver gene discovery was limited to those previously reported in T-ALL or genes with mutations in more than two samples with germline available to confirm somatic status. As shown in Figure 4A, driver events occurred almost exclusively in known T-ALL genes, with the most frequent being *CDKN2A* (50%), *NOTCH1* (38%), and *PHF6* (25%). We found significantly higher mutation frequency in IF compared with responsive patients in two known T-ALL genes, *WT1* (22.9% v 11.4%; *P* = .037) and *MED12* (16.7% v 2.7%; *P* < .001; Fig 4B). By contrast, several highly recurrent T-ALL genes were less frequently mutated in IF, particularly *NOTCH1* (35.4% v 74.6%; *P* < .001), *FBXW7* (2.1% v 25.4%; *P* < .001), consistent with their previously reported association with good prognosis,<sup>20,21</sup> and *CDKN2A* (50.0% v 78.4%; *P* < .001). *LEF1* and *USP7* are commonly mutated in T-ALL but we found no mutations in either gene in IF (0% v 17.4%; *P* < .001; 0% v 12.5%; *P* = .004, respectively; Fig 4B).

In addition, two genes not previously reported in T-ALL were recurrently mutated in IF. Five cases had mutations in the chromodomain-helicase-DNA-binding protein 4 (*CHD4*) gene, previously identified as a rare driver in B-ALL but not T-ALL,<sup>22</sup> which encodes a core member of the nucleosome remodeling and deacetylase (NuRD) complex.<sup>23</sup> Variants were clustered in a highly conserved region encompassing the helicase ATPase domain, in close proximity to variants reported as loss of function in endometrial cancer and Sifrim-Hitz-Weiss syndrome (Data Supplement [Fig A5]).<sup>24,25</sup> Inspection of crystal structures of the nucleosome-CHD4 complex revealed mutations affect key amino acids involved in DNA binding and ATPase activity (Data Supplement [Fig A6]). Four of the five *CHD4* lesions occurred in *HOXA* cases, further supporting their functional relevance. A second gene, lysine acetyltransferase 6A (*KAT6A*), a histone acetyltransferase mutated in AML,<sup>26</sup> harbored variants in four cases including a focal deletion and three truncating frameshift events likely to result in loss of function (Data Supplement [Fig A5]).

### Genomic Determinants of Outcome

Outcome differed significantly across genetic subtypes (Fig 5A; Data Supplement [Table A12]). *TAL1* cases had a particularly dismal outcome with OS of 12.5% (0.6-42.3). Notably, none of the seven patients with a *TAL1* noncoding driver lesion survived, and two never achieved remission, identifying this as a very high-risk genetic lesion in the context of IF. Despite the preponderance of ETP, the



**FIG 3.** Phenotypic and genetic classification of T-ALL IF. (A) Proportion of flow cytometry–defined ETP phenotype in IF versus responsive cases. (B) Relationship between ETP status, genetic subgroup, and initiating genomic driver lesion. Note that all TAL1 cases co-occurred with either a LMO1 or LMO2 lesion, which is not shown in the figure. (C) Proportion of genetic subtypes in IF versus responsive cases of T-ALL. (D) Landscape of TAL1 driver lesion types in IF versus responsive cases of T-ALL. \* $P < .05$ , \*\*\* $P < .001$ . ETP, early thymic progenitor; IF, induction failure; T-ALL, T-cell acute lymphoblastic leukemia.



outcome was similar between ETP and non-ETP cases (Data Supplement [Fig A7]). Similarly, the absence of biallelic deletion of the *TRG* locus (*ABD*), an alternate means of identifying immature cases of T-ALL,<sup>27</sup> showed no association with outcome (Data Supplement [Fig A7]).

Analysis of recurrently mutated genes showed significantly poorer survival in patients with mutations in *MYCN* and *NRAS* (Data Supplement [Fig A8]). Given the relatively small numbers of mutations in individual genes, we grouped genes by key oncogenic pathways (*RAS*, *PI3K/AKT*, *IL7R/JAK*, and *MYC/MYCN*), identifying significantly worse outcomes in patients with mutations in the *RAS* or *MYC* pathways (Data Supplement [Fig A9]). Since these mutations largely occur in the non-TAL1 subtypes (Fig 4A), selecting patients with a TAL1 lesion and/or mutations in the *MYC* or *RAS* pathways, which we term TMR lesions, allows division of the cohort into two groups with markedly different outcomes (Data Supplement [Table A13]). Those with a TMR lesion had a 5-year OS of only 23.1% compared with 86.4% in those without a TMR lesion (HR, 6.84 [95% CI, 2.78 to 16.78];  $P < .0001$ ; Fig 5B). Notably, six patients never achieved remission, all of whom were in the TMR group.

### Subclonal Landscape

The genomic results show a highly heterogeneous landscape of genetic variants, almost all of which are also seen in responsive disease. This raises the possibility that a refractory subclone, below the level of WGS detection, exists at presentation and expands through the selective pressure of induction therapy to become the dominant clone at EOI. To test this hypothesis, we performed WGS on three cases with EOI samples available. Although there was evidence of clonal heterogeneity at diagnosis, we did not observe clonal evolution over the course of induction, with only a single variant in *PTEN* lost in one case (Data Supplement [Fig A10]). Specifically, no new variants emerged, indicating that disease at presentation is representative of true refractory leukemia and that IF does not occur as a result of chemotherapy-induced mutagenesis.

### DISCUSSION

In this study, comprising over 700 children with T-ALL, we demonstrate that IF occurs in 10% of patients, with only half of this group achieving long-term survival, a dismal outcome in the context of pediatric ALL. IF was particularly common in older patients, with one in five older than 16 years suffering IF, a previously unreported association highlighting the need to counsel this group at diagnosis of the potential risk of treatment failure.

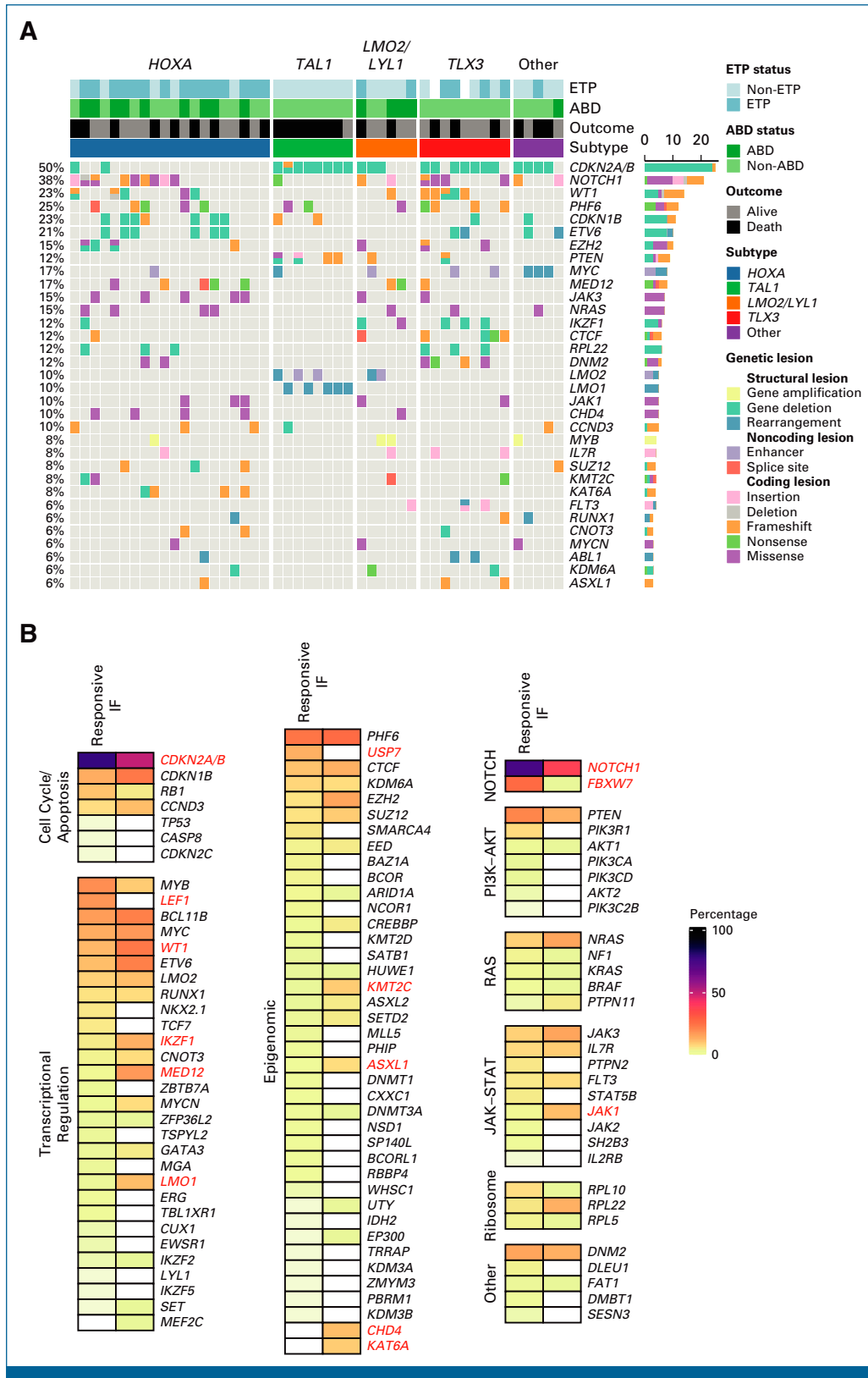
Most disappointingly, we found no clear benefit of treatment intensification with nelarabine and HSCT, an approach that has been adopted as standard of care internationally.<sup>28</sup> Although not a true randomization, the change in treatment strategy over the study period provides a temporal

randomization, with no difference in outcomes across the two trials. This is in keeping with the outcomes of IF cases treated on the COG AALL0434 trial who were allocated nelarabine but achieved a 5-year EFS of only 53%, comparable with the outcome of our cohort.<sup>5</sup> Although there was no clear benefit with HSCT, there was a higher disease burden at EOI in this group, making it possible that a subgroup of patients did derive benefit from HSCT. Addressing this in a randomized control trial is desirable but, in reality, unrealistic, given the number of patients required to power such a study. Although EOC MRD levels were only available in a subset of our cohort, this was a significant stratifier of outcome in IF, as has been shown in responsive T-ALL.<sup>29</sup> Unsurprisingly, almost no patients with persistently high MRD after consolidation therapy survived. By contrast, in patients with very low MRD after consolidation, there were no relapses but two deaths due to HSCT, suggesting that patients may benefit from a chemotherapy-only protocol, removing the toxicity of HSCT.

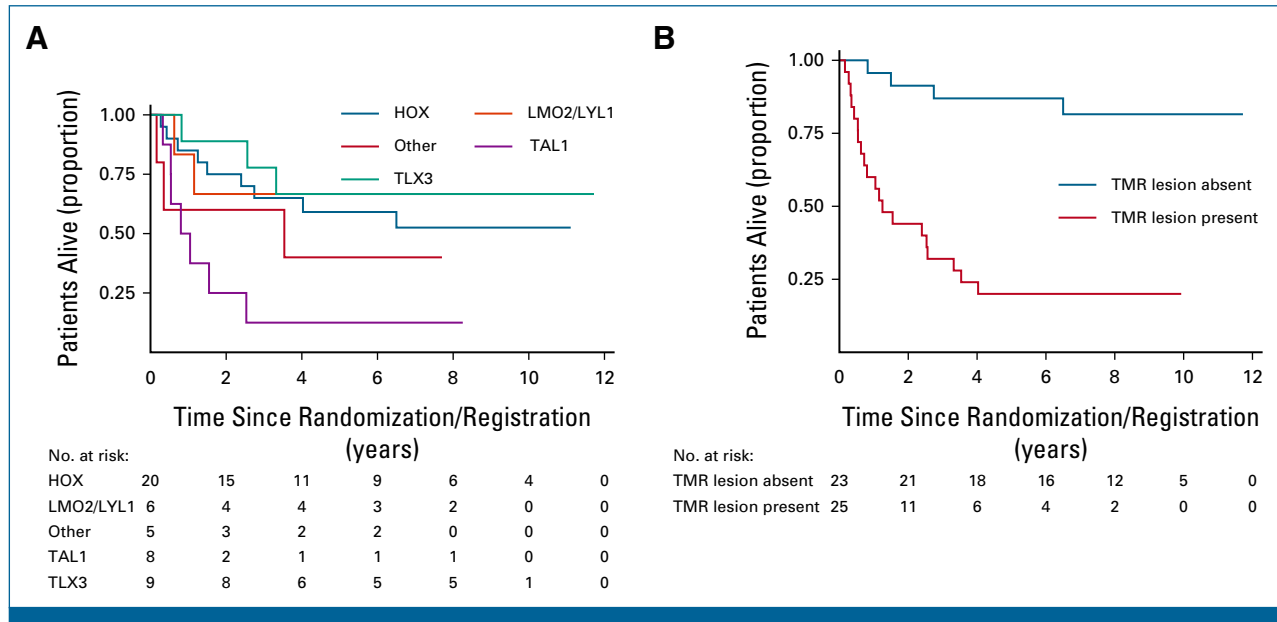
In addition to EOC MRD, we identified several genetic biomarkers of poor outcome in the context of IF. Combining TAL1 lesions or mutations in the *MYC* and *RAS* pathways (TMR lesions) produces a gene set that identifies patients likely to fail conventional therapy and who should be considered for experimental agents. Although patients with *RAS* pathway lesions could be considered for targeted therapy, such as MEK inhibitors, the other lesions are not currently amenable to targeted therapy, and the sheer genetic diversity seen in T-ALL IF will make identification of effective agents challenging. Instead, our findings support the current focus on pathway-agnostic immunotherapy, such as chimeric antigen receptor T-cell (CAR-T) therapy targeting ubiquitous T-ALL antigens, such as CD7.<sup>30</sup>

The genomic analyses highlight the strength of WGS, painting a picture of marked genetic heterogeneity, with 25 different initiating lesions converging on 10 subtype-defining T-ALL genes, rather than a single unifying driver of refractory disease. The lack of a clear dominant driver is somewhat surprising. Our sequencing of samples at the EOI dismisses the possibility that a low-level treatment-resistant subclone exists at diagnosis and becomes dominant through the induction period, suggesting other nongenetic mechanisms may drive refractory disease, as described in AML.<sup>31,32</sup>

Biological classification shows a clear dominance of the ETP phenotype and *HOXA* genetic subtype, which are associated with a more stem-cell-/myeloid-like phenotype. This is consistent with the increased mutations in *WT1* (22.9% of cases), which is frequently mutated in AML and associated with poor prognosis.<sup>33</sup> Notably, we did not find enrichment of genes and pathways previously implicated in high-risk disease such as *PTEN*, *RAS*, *PRC2*, and *TP53*. Interestingly, we found recurrent mutations in two novel T-ALL genes, *CHD4* and *KAT6A*, encompassing 20% of cases. *CHD4* mutations have previously been reported in AML and are particularly



**FIG 4.** Mutational landscape of IF T-ALL. (A) Oncoplot showing somatic variants, ETP status, ABD status, outcome, and genetic subtype in IF T-ALL. (B) Frequency of mutations in IF versus responsive T-ALL. Names of genes showing a significant difference ( $P < .05$ ) are in red. ABD, absence of biallelic deletion; ETP, early thymic progenitor; IF, induction failure; T-ALL, T-cell acute lymphoblastic leukemia.



**FIG 5.** Genomic biomarkers of outcome in IF T-ALL. (A) Kaplan-Meier plot showing OS by genetic subtype. (B) Kaplan-Meier plot showing OS on the basis of the presence or absence of a mutation in the *TAL1* gene or *MYC* or *RAS* pathways. IF, induction failure; OS, overall survival; T-ALL, T-cell acute lymphoblastic leukemia; TMR, *TAL1*/*MYC*/*RAS*.

common in endometrial cancer.<sup>34,35</sup> Inspection of crystal structures indicates variants are likely to interfere with DNA binding and ATPase function resulting in loss of function. *KAT6A* has essential roles in hematopoietic cells and is the target of recurrent translocations in AML.<sup>36,37</sup> Characterization of the effect of these lesions on drug response in T-ALL is vital.

The landscape of *TAL1* lesions in IF is particularly striking. Although *TAL1* is the most common subtype of T-ALL, activation is predominantly through the *STIL-TAL* deletion with a minority caused by noncoding lesions.<sup>8,18</sup> In the IF group, we observe a reversal of this ratio, with noncoding lesions the dominant driver of *TAL1* overexpression. Furthermore, these patients have a dismal outcome, with no long-term survivors and many failing to even achieve remission. To our knowledge, this is the first time a noncoding enhancer lesion has been found to affect prognosis, which

should provide a stimulus for further study of the noncoding genome in other cancers. At present, we can only speculate on why alternate lesions that should simply result in *TAL1* overexpression can have such dramatically different effects on treatment response. For instance, a previous study found higher levels of *TAL1* expression in patients with noncoding lesions, which may reduce chemosensitivity in this group<sup>38</sup>; further work is required to explore this fascinating finding.

The abysmal outcome in those relapsing after IF emphasizes that there is only one opportunity to cure these patients and better therapies are urgently needed to achieve this. The lack of progress made in relapsed/refractory T-ALL over the past two decades contrasts starkly with the influx of efficacious immunotherapies in B-ALL.<sup>39-41</sup> Thankfully, similar agents are now on the horizon for T-ALL with monoclonal antibodies and CAR-T cells entering the clinical arena.<sup>30</sup>

## AFFILIATIONS

<sup>1</sup>UCL Cancer Institute, University College London, London, United Kingdom

<sup>2</sup>Department of Haematology, Great Ormond Street Hospital for Children NHS Foundation Trust, London, United Kingdom

<sup>3</sup>The Francis Crick Institute, London, United Kingdom

<sup>4</sup>VIB-KU Leuven Center for Cancer Biology, Leuven, Belgium

<sup>5</sup>Department of Oncology, Laboratory for Integrative Cancer Genomics, KU Leuven, Leuven, Belgium

<sup>6</sup>CR UK & UCL Cancer Trials Centre, UCL Cancer Institute, UCL, London, United Kingdom

<sup>7</sup>Peter MacCallum Cancer Centre, Melbourne, VIC, Australia

<sup>8</sup>Sir Peter MacCallum Department of Oncology, The University of Melbourne, Melbourne, VIC, Australia

<sup>9</sup>South West Genomic Laboratory Hub, North Bristol NHS Trust, Bristol, United Kingdom

<sup>10</sup>The Children's Hospital at Westmead, Sydney, NSW, Australia

<sup>11</sup>Cancer Research UK Clinical Trials Unit, University of Birmingham, Birmingham, United Kingdom

<sup>12</sup>Department of Genetics, The University of Texas MD Anderson Cancer Center, Houston, TX

<sup>13</sup>Department of Genomic Medicine, The University of Texas MD Anderson Cancer Center, Houston, TX

<sup>14</sup>Wolfson Childhood Cancer Centre, Translational and Clinical Research Institute, Newcastle University, Newcastle upon Tyne, United Kingdom

<sup>15</sup>Department of Developmental Biology and Cancer, UCL Great Ormond Street Institute of Child Health, London, United Kingdom

## CORRESPONDING AUTHOR

David O'Connor, PhD, MBChB, Department of Haematology, UCL Cancer Institute, 72 Huntley St, London WC1E 6DD, United Kingdom; Twitter: @drdavidocconnor; e-mail: david.o'connor@ucl.ac.uk.

## PRIOR PRESENTATION

Presented at the American Society of Hematology Annual Congress, New Orleans, LA, December 12, 2022.

## SUPPORT

The UKALL2003 trial was funded by Blood Cancer UK (previously Leukaemia and Lymphoma Research) and the Medical Research Council; ISRCTN Registry number 07355119. The UKALL2011 trial was funded by Cancer Research UK; ISRCTN Registry number 64515327. D.O.C. is funded by a CRUK Clinician Scientist Fellowship (A27177). P.V.L. and J.D. were supported by the Francis Crick Institute, which receives its core funding from Cancer Research UK (FC001202), the UK Medical Research Council (FC001202), and the Wellcome Trust (FC001202). M.R.M. is funded by the Great Ormond Street Hospital Children's Charity. For the purpose of open access, the authors have applied a CC BY public copyright license to any author accepted manuscript version arising from this submission. J.D. was a postdoctoral fellow of the Research Foundation—Flanders (FWO; 12J6921N). P.V.L. is a CPRIT Scholar in Cancer Research and acknowledges CPRIT grant support (RR210006). L.C. was funded by the Cancer Research UK-University College London (CRUK-UCL) Centre Award (C416/A25145). F.P. is funded by a Crick Institute PhD Studentship.

## AUTHORS' DISCLOSURES OF POTENTIAL CONFLICTS OF INTEREST

Disclosures provided by the authors are available with this article at DOI <https://doi.org/10.1200/JCO.22.02734>.

## DATA SHARING STATEMENT

The National Cancer Research Institute Children's Cancer and Leukemia Group Leukemia Subgroup will consider data sharing requests from researchers investigating questions regarding the biology and treatment of acute lymphoblastic leukemia. Data, including deidentified individual patient data, and study details will be released if the project is deemed pertinent. Initial requests should be directed to Dr David O'Connor (david.o'connor@ucl.ac.uk).

## REFERENCES

- Hunger SP, Mullighan CG: Acute lymphoblastic leukemia in children. *N Engl J Med* 373:1541-1552, 2015
- Teachey DT, Pui C-H: Comparative features and outcomes between paediatric T-cell and B-cell acute lymphoblastic leukaemia. *Lancet Oncol* 20:e142-e154, 2019
- Schrapppe M, Hunger SP, Pui C-H, et al: Outcomes after induction failure in childhood acute lymphoblastic leukemia. *N Engl J Med* 366:1371-1381, 2012
- O'Connor D, Moorman AV, Wade R, et al: Use of minimal residual disease assessment to redefine induction failure in pediatric acute lymphoblastic leukemia. *J Clin Oncol* 35:660-667, 2017
- Dunsmore KP, Winter SS, Devidas M, et al: Children's Oncology Group AALL0434: A phase III randomized clinical trial testing nelarabine in newly diagnosed T-cell acute lymphoblastic leukemia. *J Clin Oncol* 38:3282-3293, 2020
- Schwab C, Ryan SL, Chilton L, et al: EBF1-PDGFRB fusion in pediatric B-cell precursor acute lymphoblastic leukemia (BCP-ALL): Genetic profile and clinical implications. *Blood* 127:2214-2218, 2016
- Roberts KG, Li Y, Payne-Turner D, et al: Targetable kinase-activating lesions in Ph-like acute lymphoblastic leukemia. *N Engl J Med* 371:1005-1015, 2014
- Liu Y, Easton J, Shao Y, et al: The genomic landscape of pediatric and young adult T-lineage acute lymphoblastic leukemia. *Nat Genet* 49:1211-1218, 2017
- Vora A, Goulden N, Wade R, et al: Treatment reduction for children and young adults with low-risk acute lymphoblastic leukaemia defined by minimal residual disease (UKALL 2003): A randomised controlled trial. *Lancet Oncol* 14:199-209, 2013
- Vora A, Goulden N, Mitchell C, et al: Augmented post-remission therapy for a minimal residual disease-defined high-risk subgroup of children and young people with clinical standard-risk and intermediate-risk acute lymphoblastic leukaemia (UKALL 2003): A randomised controlled trial. *Lancet Oncol* 15:809-818, 2014
- Goulden NJ, Kirkwood AA, Moppett J, et al: UKALL 2011: Randomised trial investigating a short induction dexamethasone schedule for children and young adults with acute lymphoblastic leukaemia. *Blood* 130:141, 2017 (suppl 1)
- Kirkwood AA, Goulden N, Moppett J, et al: High dose methotrexate does not reduce the risk of CNS relapse in children and young adults with acute lymphoblastic leukaemia and lymphoblastic lymphoma: Results of the randomised phase III study UKALL 2011. *Blood* 140:516-518, 2022 (suppl 1)
- Coustan-Smith E, Mullighan CG, Onciu M, et al: Early T-cell precursor leukaemia: A subtype of very high-risk acute lymphoblastic leukaemia. *Lancet Oncol* 10:147-156, 2009
- Ferrando AA, Neuberg DS, Staunton J, et al: Gene expression signatures define novel oncogenic pathways in T cell acute lymphoblastic leukemia. *Cancer Cell* 1:75-87, 2002

## AUTHOR CONTRIBUTIONS

**Conception and design:** David O'Connor, Jonas Demeulemeester, Jon Mee, Marc R. Mansour

**Financial support:** David O'Connor, Marc R. Mansour

**Provision of study materials or patients:** Caroline Bateman, Sarah Inglott, Anthony V. Moorman

**Collection and assembly of data:** David O'Connor, Jonas Demeulemeester, Foteini Papaleonidopoulou, Gianna Bloye, Nadine Farah, Jeremy Hancock, Caroline Bateman, Sarah Inglott, Jon Mee, Anthony V. Moorman, Marc R. Mansour

**Data analysis and interpretation:** David O'Connor, Jonas Demeulemeester, Lucia Conde, Amy Kirkwood, Kent Fung, Sunniyat Rahman, Sarah Inglott, Jon Mee, Javier Herrero, Peter Van Loo, Ajay Vora, Marc R. Mansour

**Manuscript writing:** All authors

**Final approval of manuscript:** All authors

**Accountable for all aspects of the work:** All authors

## ACKNOWLEDGMENT

The authors would like to thank all the patients who took part in the UKALL trials as well as their families. UKALL2003 was supported by grants from Blood Cancer UK (previously Leukaemia and Lymphoma Research) and the Medical Research Council. UKALL2011 was funded by Cancer Research UK (CRUK). P.V.L. is a Winton Group Leader in recognition of the Winton Charitable Foundation's support toward the establishment of The Francis Crick Institute. The authors are grateful to the Blood Cancer UK Childhood Leukaemia Cell Bank, the Great Ormond Street Haematology Cell Bank, and the Queensland Children's Tumour Bank for provision of patient samples. The authors acknowledge the input of all the scientists and technicians working in the MRD laboratories. This research was made possible through access to the data and findings generated by the 100,000 Genomes Project. The 100,000 Genomes Project is managed by Genomics England Limited (a wholly owned company of the Department of Health and Social Care). The 100,000 Genomes Project is funded by the National Institute for Health Research and NHS England. The Wellcome Trust, Cancer Research UK, and the Medical Research Council have also funded research infrastructure. The 100,000 Genomes Project uses data provided by patients and collected by the National Health Service as part of their care and support.

15. Gu Z, Churchman ML, Roberts KG, et al: PAX5-driven subtypes of B-progenitor acute lymphoblastic leukemia. *Nat Genet* 51:296-307, 2019
16. Papaemmanuil E, Gerstung M, Bullinger L, et al: Genomic classification and prognosis in acute myeloid leukemia. *N Engl J Med* 374:2209-2221, 2016
17. Strehl S, Nebral K, König M, et al: ETV6-NCOA2: A novel fusion gene in acute leukemia associated with coexpression of T-lymphoid and myeloid markers and frequent NOTCH1 mutations. *Clin Cancer Res* 14:977-983, 2008
18. Mansour MR, Abraham BJ, Anders L, et al: An oncogenic super-enhancer formed through somatic mutation of a noncoding intergenic element. *Science* 346:1373-1377, 2014
19. Navarro J-M, Touzart A, Pradel LC, et al: Site- and allele-specific polycomb dysregulation in T-cell leukaemia. *Nat Commun* 6:6094, 2015
20. Breit S, Stanulla M, Flohr T, et al: Activating NOTCH1 mutations predict favorable early treatment response and long-term outcome in childhood precursor T-cell lymphoblastic leukemia. *Blood* 108:1151-1157, 2006
21. Jenkinson S, Koo K, Mansour MR, et al: Impact of NOTCH1/FBXW7 mutations on outcome in pediatric T-cell acute lymphoblastic leukemia patients treated on the MRC UKALL 2003 trial. *Leukemia* 27:41-47, 2013
22. Ma X, Liu Y, Liu Y, et al: Pan-cancer genome and transcriptome analyses of 1,699 paediatric leukaemias and solid tumours. *Nature* 555:371-376, 2018
23. Tong JK, Hassig CA, Schnitzler GR, et al: Chromatin deacetylation by an ATP-dependent nucleosome remodelling complex. *Nature* 395:917-921, 1998
24. Le Gallo M, O'Hara AJ, Rudd ML, et al: Exome sequencing of serous endometrial tumors identifies recurrent somatic mutations in chromatin-remodeling and ubiquitin ligase complex genes. *Nat Genet* 44:1310-1315, 2012
25. Sifrim A, Hitz M-P, Wilsdon A, et al: Distinct genetic architectures for syndromic and nonsyndromic congenital heart defects identified by exome sequencing. *Nat Genet* 48:1060-1065, 2016
26. Aqil B, Gao J, Stalling M, et al: Distinctive flow cytometric and mutational profile of acute myeloid leukemia with t(8;16)(p11;p13) translocation. *Am J Clin Pathol* 157:701-708, 2022
27. Gutierrez A, Dahlberg SE, Neuberg DS, et al: Absence of biallelic TCR $\gamma$  deletion predicts early treatment failure in pediatric T-cell acute lymphoblastic leukemia. *J Clin Oncol* 28:3816-3823, 2010
28. Teachey DT, O'Connor D: How I treat newly diagnosed T-cell acute lymphoblastic leukemia and T-cell lymphoblastic lymphoma in children. *Blood* 135:159-166, 2020
29. Schrappe M, Valsecchi MG, Bartram CR, et al: Late MRD response determines relapse risk overall and in subsets of childhood T-cell ALL: Results of the AIEOP-BFM-ALL 2000 study. *Blood* 118:2077-2084, 2011
30. Pan J, Tan Y, Wang G, et al: Donor-derived CD7 chimeric antigen receptor T cells for T-cell acute lymphoblastic leukemia: First-in-human, phase I trial. *J Clin Oncol* 39:3340-3351, 2021
31. Duy C, Li M, Teater M, et al: Chemotherapy induces senescence-like resilient cells capable of initiating AML recurrence. *Cancer Discov* 11:1542-1561, 2021
32. Fennell KA, Vassiliadis D, Lam EYN, et al: Non-genetic determinants of malignant clonal fitness at single-cell resolution. *Nature* 601:125-131, 2022
33. Virappane P, Gale R, Hills R, et al: Mutation of the Wilms' tumor 1 gene is a poor prognostic factor associated with chemotherapy resistance in normal karyotype acute myeloid leukemia: The United Kingdom Medical Research Council Adult Leukaemia Working Party. *J Clin Oncol* 26:5429-5435, 2008
34. Heshmati Y, Türköz G, Harisankar A, et al: The chromatin-remodeling factor CHD4 is required for maintenance of childhood acute myeloid leukemia. *Haematologica* 103:1169-1181, 2018
35. Li Y, Liu Q, McGrail DJ, et al: CHD4 mutations promote endometrial cancer stemness by activating TGF-beta signaling. *Am J Cancer Res* 8:903-914, 2018
36. Baell JB, Leaver DJ, Hermans SJ, et al: Inhibitors of histone acetyltransferases KAT6A/B induce senescence and arrest tumour growth. *Nature* 560:253-257, 2018
37. Yan F, Li J, Milosevic J, et al: KAT6A and ENL form an epigenetic transcriptional control module to drive critical leukemogenic gene-expression programs. *Cancer Discov* 12:792-811, 2022
38. Hu S, Qian M, Zhang H, et al: Whole-genome noncoding sequence analysis in T-cell acute lymphoblastic leukemia identifies oncogene enhancer mutations. *Blood* 129:3264-3268, 2017
39. Maude SL, Laetsch TW, Buechner J, et al: Tisagenlecleucel in children and young adults with B-cell lymphoblastic leukemia. *N Engl J Med* 378:439-448, 2018
40. Brown PA, Ji L, Xu X, et al: Effect of postreinduction therapy consolidation with blinatumomab vs chemotherapy on disease-free survival in children, adolescents, and young adults with first relapse of B-cell acute lymphoblastic leukemia: A randomized clinical trial. *JAMA* 325:833-842, 2021
41. Kantarjian HM, DeAngelo DJ, Stelljes M, et al: Inotuzumab ozogamicin versus standard therapy for acute lymphoblastic leukemia. *N Engl J Med* 375:740-753, 2016

## AUTHORS' DISCLOSURES OF POTENTIAL CONFLICTS OF INTEREST

### Clinicogenomic Landscape of Induction Failure in Childhood and Young Adult T-Cell Acute Lymphoblastic Leukemia

The following represents disclosure information provided by authors of this manuscript. All relationships are considered compensated unless otherwise noted. Relationships are self-held unless noted. I = Immediate Family Member, Inst = My Institution. Relationships may not relate to the subject matter of this manuscript. For more information about ASCO's conflict of interest policy, please refer to [www.asco.org/rwc](http://www.asco.org/rwc) or [ascopubs.org/jco/authors/author-center](http://ascopubs.org/jco/authors/author-center).

Open Payments is a public database containing information reported by companies about payments made to US-licensed physicians ([Open Payments](#)).

**Jonas Demeulemeester**

**Research Funding:** Johnson & Johnson/Janssen (Inst)

**Amy Kirkwood**

**Honoraria:** Kite/Gilead

**Consulting or Advisory Role:** Janssen

**Research Funding:** Takeda (Inst), Pfizer (Inst), Bristol Myers Squibb (Inst), Novartis (Inst), Roche (Inst), BeiGene (Inst)

**Nadine Farah**

**Employment:** HCA Healthcare

**Anthony V. Moorman**

**Honoraria:** Amgen

**Travel, Accommodations, Expenses:** Amgen

**Ajay Vora**

**Consulting or Advisory Role:** Janssen Oncology, Novartis Pharmaceuticals UK Ltd

**Marc R. Mansour**

**Consulting or Advisory Role:** AstraZeneca

No other potential conflicts of interest were reported.