

Washington University School of Medicine

Digital Commons@Becker

2020-Current year OA Pubs

Open Access Publications

1-2-2024

Organ preservation and survival by clinical response grade in patients with rectal cancer treated with total neoadjuvant therapy: A secondary analysis of the OPRA randomized clinical trial

Hannah M Thompson
Memorial Sloan Kettering Cancer Center

Steven R Hunt
Washington University School of Medicine in St. Louis
et al.

Follow this and additional works at: https://digitalcommons.wustl.edu/oa_4



Part of the [Medicine and Health Sciences Commons](#)

Please let us know how this document benefits you.

Recommended Citation

Thompson, Hannah M; Hunt, Steven R; and et al., "Organ preservation and survival by clinical response grade in patients with rectal cancer treated with total neoadjuvant therapy: A secondary analysis of the OPRA randomized clinical trial." *JAMA Network Open*. 7, 1. e2350903 (2024).
https://digitalcommons.wustl.edu/oa_4/2905

This Open Access Publication is brought to you for free and open access by the Open Access Publications at Digital Commons@Becker. It has been accepted for inclusion in 2020-Current year OA Pubs by an authorized administrator of Digital Commons@Becker. For more information, please contact vanam@wustl.edu.



Original Investigation | Oncology

Organ Preservation and Survival by Clinical Response Grade in Patients With Rectal Cancer Treated With Total Neoadjuvant Therapy

A Secondary Analysis of the OPRA Randomized Clinical Trial

Hannah M. Thompson, MD; Dana M. Omer, MD; Sabrina Lin, MS; Jin K. Kim, MD; Jonathan B. Yuval, MD; Floris S. Veheij, BSc; Li-Xuan Qin, PhD; Marc J. Gollub, MD; Abraham Jing-Ching Wu, MD; Meghan Lee, BS; Sujata Patil, PhD; Aram F. Hezel, MD; Jorge E. Marcet, MD; Peter A. Cataldo, MD; Blase N. Polite, MD; Daniel O. Herzig, MD; David Liska, MD; Samuel Oommen, MD; Charles M. Friel, MD; Charles A. Ternent, MD; Andrew L. Coveler, MD; Steven R. Hunt, MD; Julio Garcia-Aguilar, MD, PhD; for the OPRA Consortium

Abstract

IMPORTANCE Assessing clinical tumor response following completion of total neoadjuvant therapy (TNT) in patients with locally advanced rectal cancer is paramount to select patients for watch-and-wait treatment.

OBJECTIVE To assess organ preservation (OP) and oncologic outcomes according to clinical tumor response grade.

DESIGN, SETTING, AND PARTICIPANTS This was secondary analysis of the Organ Preservation in Patients with Rectal Adenocarcinoma trial, a phase 2, nonblinded, multicenter, randomized clinical trial. Randomization occurred between April 2014 and March 2020. Eligible participants included patients with stage II or III rectal adenocarcinoma. Data analysis occurred from March 2022 to July 2023.

INTERVENTION Patients were randomized to induction chemotherapy followed by chemoradiation or chemoradiation followed by consolidation chemotherapy. Tumor response was assessed 8 (±4) weeks after TNT by digital rectal examination and endoscopy and categorized by clinical tumor response grade. A 3-tier grading schema that stratifies clinical tumor response into clinical complete response (CCR), near complete response (NCR), and incomplete clinical response (ICR) was devised to maximize patient eligibility for OP.

MAIN OUTCOMES AND MEASURES OP and survival rates by clinical tumor response grade were analyzed using the Kaplan-Meier method and log-rank test.

RESULTS There were 304 eligible patients, including 125 patients with a CCR (median [IQR] age, 60.6 [50.4-68.0] years; 76 male [60.8%]), 114 with an NCR (median [IQR] age, 57.6 [49.1-67.9] years; 80 male [70.2%]), and 65 with an ICR (median [IQR] age, 55.5 [47.7-64.2] years; 41 male [63.1%]) based on endoscopic imaging. Age, sex, tumor distance from the anal verge, pathological tumor classification, and clinical nodal classification were similar among the clinical tumor response grades. Median (IQR) follow-up for patients with OP was 4.09 (2.99-4.93) years. The 3-year probability of OP was 77% (95% CI, 70%-85%) for patients with a CCR and 40% (95% CI, 32%-51%) for patients with an NCR ($P < .001$). Clinical tumor response grade was associated with disease-free survival, local recurrence-free survival, distant metastasis-free survival, and overall survival.

CONCLUSIONS AND RELEVANCE In this secondary analysis of a randomized clinical trial, most patients with a CCR after TNT achieved OP, with few developing tumor regrowth. Although the

(continued)

Key Points

Question Can a 3-tier grading schema be used to estimate clinical tumor response after total neoadjuvant therapy (TNT) for patients with locally advanced rectal cancer?

Findings This secondary analysis of the Organ Preservation in Patients with Rectal Adenocarcinoma trial (a phase 2, randomized clinical trial) assessed clinical tumor response grade after TNT among 304 patients using 3 grades and found clinical tumor response grade was significantly associated with survival and organ preservation.

Meaning These findings suggest that the 3-tier grading schema can be used to counsel patients regarding their expected organ preservation and survival outcomes on the basis of their individual clinical tumor response grade.

+ Supplemental content

Author affiliations and article information are listed at the end of this article.

Open Access. This is an open access article distributed under the terms of the CC-BY License.

Abstract (continued)

probability of tumor regrowth was higher for patients with an NCR compared with patients with a CCR, a significant proportion of patients achieved OP. These findings suggest the 3-tier grading schema can be used to estimate recurrence and survival outcomes in patients with locally advanced rectal cancer who receive TNT.

TRIAL REGISTRATION ClinicalTrials.gov Identifier: [NCT02008656](https://clinicaltrials.gov/ct2/show/study/NCT02008656)

JAMA Network Open. 2024;7(1):e2350903. doi:10.1001/jamanetworkopen.2023.50903

Introduction

The watch-and-wait (WW) strategy is a newer treatment option for patients with locally advanced rectal cancer with a clinical complete response (CCR) to neoadjuvant therapy. WW is based on the assumption that patients with a CCR do not have viable cancer cells left in the bowel wall or regional lymph nodes and allows patients to forgo the potential morbidity of a surgical resection.^{1,2} Previous work has shown that WW for patients with a CCR is clinically feasible and oncologically safe.³⁻⁸ However, a CCR does not always represent complete tumor eradication, and some patients offered WW at the end of neoadjuvant therapy develop tumor regrowth during surveillance. Although most cases of regrowth are salvageable with total mesorectal excision (TME), concerns persist about the potential for tumor spread from clinically occult cancer cells during this surveillance period.^{3,4,8,9}

Clinical response is initially assessed at a fixed interval after neoadjuvant therapy using digital rectal examination, endoscopy, and magnetic resonance imaging (MRI). However, the time that it takes to achieve a complete response can vary. Although tumor and treatment characteristics seem to be associated with differences in tumor response, there is evidence suggesting delayed assessment after neoadjuvant therapy increases the rate of response.¹⁰⁻¹² The rate of response also depends on the criteria used to define a CCR. Assessing response early and applying strict response criteria could potentially deprive patients with a substantial response, but not a complete response, of the potential benefit of organ preservation (OP).¹³⁻¹⁶ Thus, the potential benefit of maximizing response by offering WW to patients with less than a CCR must be balanced against the theoretical risk of tumor progression in patients who delay surgery and never achieve a sustained complete response.

To maximize the possibility of OP, the Organ Preservation in Patients with Rectal Adenocarcinoma (OPRA) trial—a multicenter, nonblinded, phase 2 randomized clinical trial—introduced a 3-tier grading schema to clinically categorize tumor response.¹⁷ We have previously reported OP and oncological outcomes for the entire cohort.⁵ Here, we discuss the rates of OP and survival based on the clinical tumor response grade.

Methods

Patients

This secondary analysis of the OPRA randomized clinical trial was approved by a centralized institutional review board at Memorial Sloan Kettering Cancer Center as well as the participating centers' individual institutional review boards, and it followed the Consolidated Standards of Reporting Trials (CONSORT) reporting guideline for randomized clinical trials. The OPRA trial enrolled patients aged 18 years and older with biopsy-proven clinical stage II or III rectal adenocarcinoma. Written informed consent was obtained from eligible patients. Participants were randomized to receive total neoadjuvant therapy (TNT) in the form of either induction systemic chemotherapy followed by chemoradiation or chemoradiation followed by systemic chemotherapy.

The patient selection criteria, TNT regimens, and results have previously been published.^{5,17} The trial protocol is available in [Supplement 1](#).

Clinical Tumor Response Assessment

Clinical tumor response was assessed at 8 (\pm 4) weeks following TNT by the treating surgeon using digital rectal examination and flexible endoscopy. Surgeons completed a tumor assessment form (TAF) with predefined clinical and endoscopic features. Clinical tumor response grade was determined on the basis of a 3-tier grading schema to classify patients into the following groups: CCR, near complete response (NCR), and incomplete clinical response (ICR) (eFigure 1 in [Supplement 2](#)). The features corresponding to the lowest clinical tumor response tier defined the patient's overall clinical tumor response grade. MRI was also performed at restaging either before or after flexible sigmoidoscopy. The recommendation to proceed with surgery or WW was made by the surgeon and documented on the TAF. The MRI results may have influenced surgeons' recommendations, but the contribution of the MRI to the decision process was not recorded on the TAF. The protocol indicated that in cases of response discrepancy between the endoscopic and MRI images, priority should be given to endoscopic imaging, and the decision should be based on the endoscopic imaging.⁵ The final decision was made by the individual investigators, and the protocol did not require case discussion at a tumor board or documentation of the discussion.

Management After TNT

After completing TNT, patients with an ICR were recommended to undergo TME. Patients with an NCR or CCR were offered the option of entering the WW protocol. Patients under WW were followed at frequent intervals using digital rectal examination, flexible sigmoidoscopy, MRI, carcinoembryonic antigen testing, and computed tomography as described previously.¹⁷ Those with a subsequent tumor regrowth during surveillance were recommended salvage TME. Patients who underwent TME at restaging or during WW were followed according to National Comprehensive Cancer Network guidelines.¹⁸

Outcomes

Disease-free survival (DFS), distant-metastasis-free survival (DMFS), local-recurrence-free survival (LRFS), overall survival (OS), and OP were defined as previously described and reported by response grade based on an intention-to-treat analysis.⁵ Briefly, events for the DFS analysis included death for any cause, distant metastasis, locoregional failure, and new invasive primary colorectal cancer. OP was defined as TME-free survival with the clinical tumor response grades assessed in an intention-to-treat manner. Patients who were recommended TME and refused, underwent local excision, or had disease progression were considered to have undergone TME. Patients with an ICR were recommended TME per protocol; patients with ICR who declined surgery and/or were followed under the WW protocol were considered to have undergone TME. All survival outcomes (DFS, DMFS, LRFS, and OS) were defined to start on the restaging date; if the restaging date was not available, 1 month prior to the TME date was the proxy restaging date. The end date for each survival outcome was defined as the first occurrence of the respective survival event, and patients without events were censored at the end of their available follow-up.

Statistical Analysis

Demographic, clinical, and treatment baseline characteristics were summarized using median (IQR) for continuous variables and frequency and percentages for categorical variables. Characteristics were compared by the 3 clinical tumor response grades using the Fisher exact test for categorical variables and the Kruskal-Wallis rank sum test for continuous variables. Kaplan-Meier curves provided point estimates, and comparisons between clinical tumor response grades were made using the log-rank test. All analyses were performed using R statistical software version 4.2.2 (R

Project for Statistical Computing). *P* values were 2-sided and were considered statistically significant if $<.05$. Data analysis occurred from March 2022 to July 2023.

Results

A total of 324 patients were randomized between April 2014 and March 2020. Twenty were excluded from analysis (**Figure 1**).⁵ Of the 304 analyzable patients, 294 had a restaging TAF and were grouped on the basis of their clinical tumor response grade. The remaining 10 patients did not have completed restaging TAFs due to toxicities or complications during TNT (6 patients), patient noncompliance (2 patients), inability to undergo flexible sigmoidoscopy (1 patient), or concerns for progression (1 patient). These patients were all recommended to have TME and were assigned to the ICR group based on intention to treat (Figure 1).

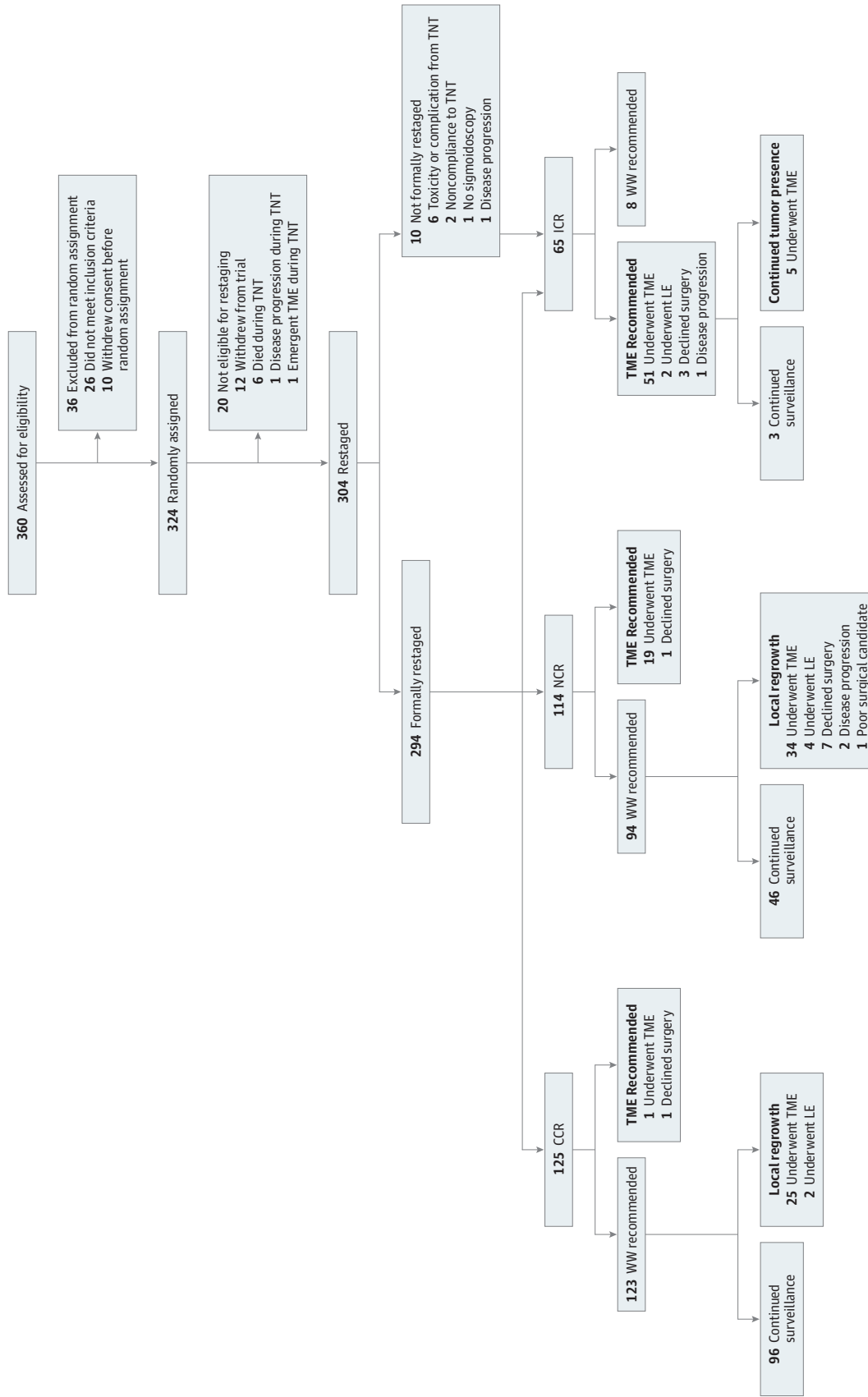
Of the 304 patients, there were 125 patients with a CCR (41.1%; median [IQR] age, 60.6 [50.4-68.0] years; 76 male [60.8%]), 114 patients with an NCR (37.5%; median [IQR] age, 57.6 [49.1-67.9] years; 80 male [70.2%]), and 65 patients with an ICR (21.4%; median [IQR] age, 55.5 [47.7-64.2] years; 41 male [63.1%]) (**Table 1**). We found no differences between the clinical tumor response grades based on age, sex, or tumor distance from the anal verge. There were more patients whose lymph node status was positive in the ICR group (51 of 65 patients [78.5%]) compared with the NCR (86 of 114 patients [75.4%]) and the CCR groups (80 of 125 patients [64.0%]), but the differences were not statistically significant. Two patients in the ICR group did not receive chemotherapy, and 1 patient did not receive chemoradiation. The proportion of patients receiving all their intended cycles of FOLFOX (fluorouracil, oxaliplatin, and leucovorin) or CAPEOX (capecitabine and oxaliplatin) was lower in the ICR group (50 of 65 patients [76.9%]) compared with the NCR group (112 of 114 patients [98.2%]) or the CCR group (114 of 125 patients [91.2%]). Time from the end of TNT to restaging did not vary between groups.

The surgical and pathological characteristics of the 144 patients requiring surgery are presented in **Table 2**. Of the 125 patients with a CCR, 28 (22.4%) underwent surgery, whereas 58 of the 114 patients with an NCR (50.9%) and 58 of 65 patients with an ICR (89.2%) underwent surgery. There were no significant differences in the proportion of patients who underwent TME or local excision between the clinical tumor response grades. More patients in the ICR group had node-positive (ypN+) disease (16 of 58 patients [27.6%]) compared with the CCR group (4 of 28 patients [14.3%]) and the NCR group (6 of 58 participants [10.3%]), but the difference did not reach statistical significance.

Of the 125 patients with a CCR, 2 were offered upfront TME; 1 patient was offered upfront TME for a rectal stricture that precluded effective surveillance with a subsequent pathologic complete response (PCR), and the other patient was offered upfront TME based on the site's tumor board recommendations. Of note, the second patient declined resection and never developed tumor regrowth. Both patients remained without evidence of disease during their follow-up periods. Of the 125 patients with CCR, 123 (98.4%) were offered WW, and 27 of those offered WW (22.0%) developed local regrowth. A total of 25 patients in the CCR group underwent salvage TME, and 2 had salvage local excision. The survival events for those 27 patients are outlined in the eTable in **Supplement 2**. Of the remaining 96 patients with a sustained CCR until the end of follow-up, 5 (5.2%) developed distant metastases, with 4 subsequently dying from disease. One patient died from unrelated causes.

Of the 114 patients with an NCR at restaging, 20 (17.5%) were recommended surgery; 19 underwent TME and 1 underwent local excision. Three of the 19 patients who underwent TME had a PCR. Of the 114 patients with an NCR, 94 (82.5%) were offered WW, and 48 of those offered WW (51.1%) had local regrowth; of those patients, 34 underwent TME, 4 underwent local excision, 8 refused TME, and 2 were not considered candidates for TME due to disease progression. Two of the 34 patients who underwent TME were found to have a PCR. The eTable in **Supplement 2** describes the survival events for these patients. Forty-six patients with an NCR continued WW during the

Figure 1. Diagram of the Clinical Tumor Response Grades Based on Intention-to-Treat



CCR indicates clinical complete response; ICR, incomplete clinical response; LE, local excision; NCR, near complete response; TME, total mesorectal excision; TNT, total neoadjuvant therapy; WW, watch-and-wait.

follow-up and preserved their rectum; 6 of those patients (13.0%) developed distant metastases with 2 subsequent deaths, and 2 patients died without any reported local or systemic disease.

Finally, of the 65 patients in the ICR group, 57 (87.7%) were recommended TME at restaging. Fifty-one patients underwent TME, 2 underwent a local excision, 3 refused surgical resection, and 1 patient was not considered a surgical candidate due to disease progression. Of the 51 patients who underwent TME, 4 had a PCR. Survival events for patients with an ICR are presented in the eTable in Supplement 2. Although the protocol recommended TME surgery for all patients with ICR at restaging, 8 of 65 patients in the ICR group (12.3%) were followed under WW for different reasons (borderline response, rectovaginal fistula, or discrepancy between clinical observations and pathology on a tissue biopsy). Of these 8 patients with an ICR, 5 eventually required TME for tumor persistence or regrowth. The remaining 3 patients were managed nonoperatively because they demonstrated improved clinical response over time. Of note, 2 of these 3 patients developed lung metastases, and 1 subsequently died. For the intention-to-treat analysis, these patients were considered to have undergone TME at the time of restaging.

The rate of OP at 3 years was 47% (95% CI, 41%-53%) for the entire cohort (eFigure 2 in Supplement 2), 77% (95% CI, 70%-85%) for the CCR grade, and 40% (95% CI, 32%-51%) for the NCR grade ($P < .001$) (Figure 2). The median (95% CI) time to TME from restaging was 1.01 (0.75-4.48) years for the NCR group and was not reached for the CCR group. The risk of local

Table 1. Baseline Demographics and TNT Results Based on Clinical Tumor Response

Characteristic	Clinical complete response (n = 125)	Near complete response (n = 114)	Incomplete clinical response (n = 65)
Age, median (IQR), y	60.6 (50.4-68.0)	57.6 (49.1-67.9)	55.5 (47.7-64.2)
Sex			
Female	49 (39.2)	34 (29.8)	24 (36.9)
Male	76 (60.8)	80 (70.2)	41 (63.1)
Tumor distance from anal verge, median (IQR), cm ^a	4.5 (3.3-7.0)	4.0 (3.0-5.9)	4.5 (3.0-6.3)
cT classification			
cT1-cT2	16 (12.8)	11 (9.6)	5 (7.7)
cT3	95 (76.0)	87 (76.3)	51 (78.5)
cT4	14 (11.2)	16 (14.0)	9 (13.8)
cN classification			
cN-negative	45 (36.0)	28 (24.6)	14 (21.5)
cN-positive	80 (64.0)	86 (75.4)	51 (78.5)
Treatment group			
Induction chemotherapy followed by chemoradiation	55 (44.0)	60 (52.6)	31 (47.7)
Chemoradiation followed by consolidation chemotherapy	70 (56.0)	54 (47.4)	34 (52.3)
Chemotherapy received			
Fluorouracil, oxaliplatin and leucovorin	98 (78.4)	86 (75.4)	42 (64.6)
Capecitabine and oxaliplatin	21 (16.8)	26 (22.8)	17 (26.2)
Both	6 (4.8)	2 (1.8)	4 (6.2)
None	0	0	2 (3.1)
Received intended chemotherapy cycles	114 (91.2)	112 (98.2)	50 (76.9)
Radiosensitizing therapy			
Capecitabine	105 (84)	96 (84.2)	54 (83.1)
Fluorouracil	19 (15.2)	18 (15.8)	8 (12.3)
None	1 (0.8)	0	3 (4.7)
Radiation dose, median (IQR), cGy ^b	5400 (5040-5600)	5400 (5040-5400)	5400 (5000-5400)
Time from end of TNT to clinical response assessment, median (IQR), wk ^c	7.6 (5.9-9.0)	8.0 (6.0-9.7)	7.7 (5.7-9.5)
Time from start of TNT to clinical response assessment, median (IQR), wk	34.3 (32.3-36.4)	35.0 (32.2-36.8)	34.7 (32.0-37.5)

Abbreviations: cN, clinical nodecT, clinical tumor; TNT, total neoadjuvant therapy.

^a One patient did not have distance from anal verge provided.

^b One patient did not receive radiation.

^c Weeks from the last date of TNT; one patient was unknown.

regrowth at 2 years was 20% (95% CI, 70%-85%) for the CCR group and 49% (95% CI, 40%-61%) for the NCR group (eFigure 3 in Supplement 2).

DFS at 3 years for the entire cohort was 74% (95% CI, 69%-79%) (eFigure 2 in Supplement 2). There was a significant difference in DFS ($P < .001$) between the clinical tumor response grades (CCR group, 88% [95%CI, 82%-94%]; NCR group, 69% [95% CI, 61%-78%]; ICR group, 56% [95% CI, 44%-71%] (Figure 3). We also found differences for LRFs, DMFS, and OS between the clinical tumor response grades (Figure 3).

Discussion

In this secondary analysis of a randomized clinical trial, we found that clinical tumor response grade at restaging was associated with OP and survival in patients with locally advanced rectal cancer treated with neoadjuvant therapy. Although many patients with an NCR who were offered WW after neoadjuvant therapy ultimately developed tumor regrowth and required TME, a significant portion achieved OP. In addition, we observed a direct association of clinical tumor response grade with

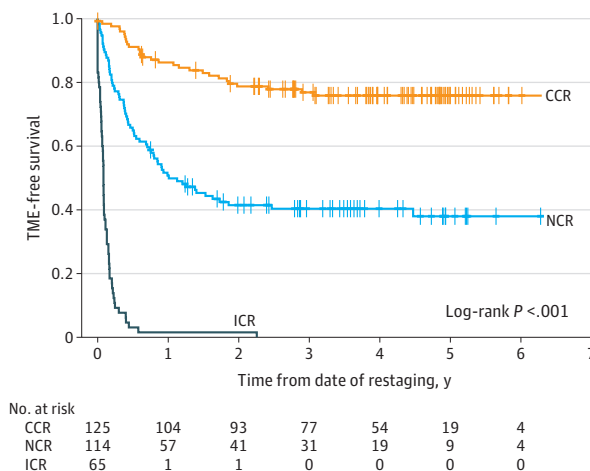
Table 2. Surgical Characteristics Based on Clinical Tumor Response

Characteristic	Patients who underwent surgery, No. (%) (N =144)			P value ^a
	Clinical complete response (n = 28)	Near complete response (n = 58)	Incomplete clinical response (n = 58)	
Resection type				
Total mesorectal excision	26 (92.9)	53 (91.4)	56 (96.6)	.50
Local excision	2 (7.1)	5 (8.6)	2 (3.4)	
Pathological tumor classification (ypT)				
T0	3 (10.7)	5 (8.6)	4 (6.9)	.80
Tis	2 (7.1)	3 (5.2)	1 (1.7)	
T1	2 (7.1)	5 (8.6)	4 (6.9)	
T2	8 (28.6)	22 (37.9)	17 (29.3)	
T3	11 (39.3)	20 (34.5)	30 (51.7)	
T4	2 (7.1)	2 (3.4)	2 (3.4)	
Missing	0	1 (1.7)	0	
Pathological nodal classification (ypN)				
N-negative	22 (78.6)	47 (81)	40 (69.0)	.13
N-positive	4 (14.3)	6 (10.3)	16 (27.6)	
N-absent ^b	2 (7.1)	5 (8.6)	2 (3.4)	

^a Significance evaluated with the Fisher exact test.

^b Absent lymph nodes from the local excision surgical specimen.

Figure 2. Organ Preservation According to Clinical Tumor Response Grade by Intention-to-Treat

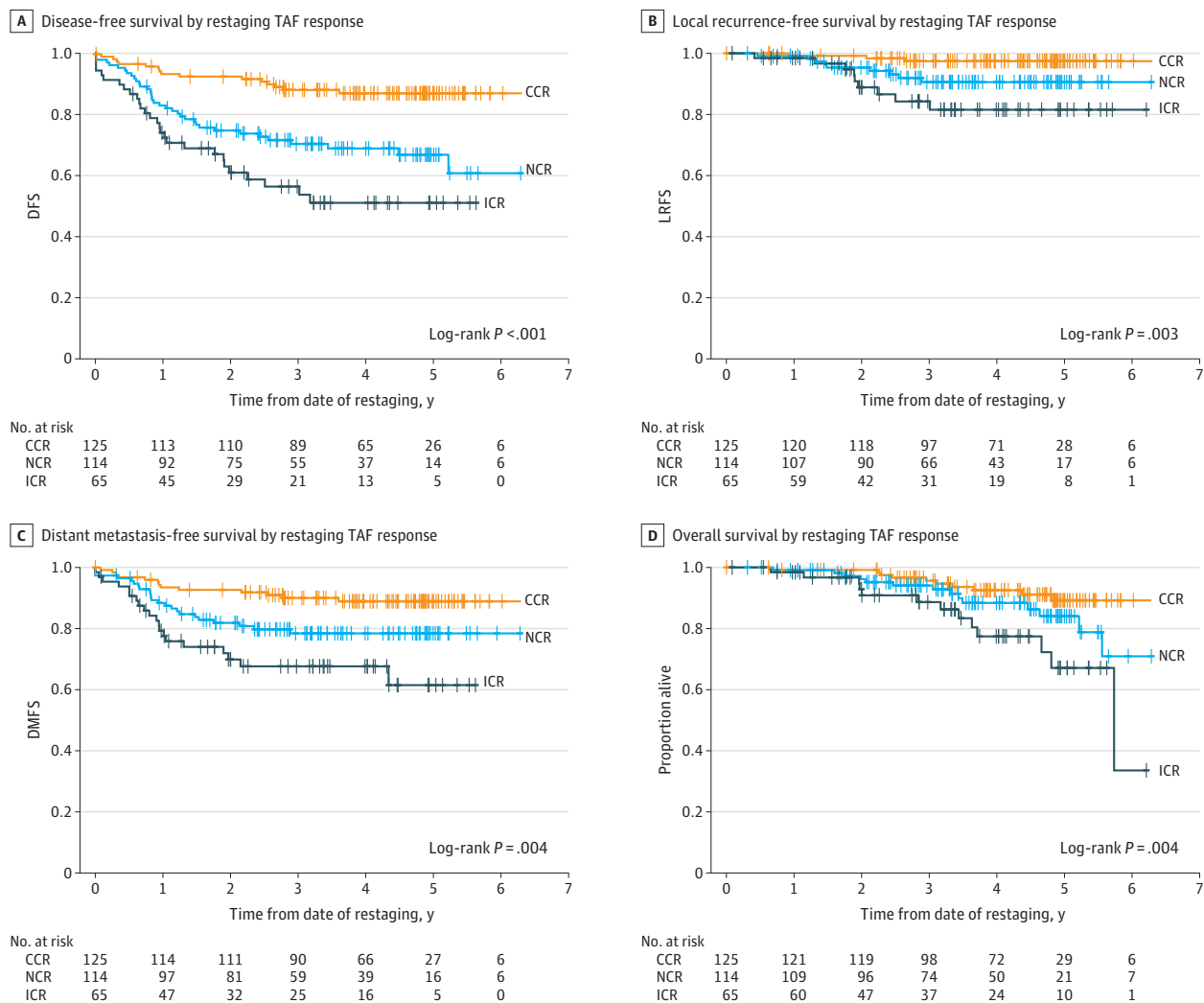


CCR indicates clinical complete response; ICR, incomplete clinical response; NCR, near complete response; TME, total mesorectal excision.

tumor recurrence and patients' survival, suggesting that clinical tumor response at restaging has prognostic implications.

The clinical criteria used to select patients for WW have historically been restrictive to avoid undertreating tumors potentially harboring viable cancer cells after neoadjuvant therapy.^{15,19} Additionally, the optimal timing of surgery after neoadjuvant therapy has been controversial given the concern (although largely unseen) for increased technical surgical difficulty and perioperative morbidity with longer intervals.^{10,20-26} However, tumor response can take months^{10,26,27} (ie, longer than the typical 6 to 8 weeks used as a standard interval between completion of TNT and TME surgery). Thus, an early assessment of clinical response using strict response criteria can lead to unnecessary TME in patients who may have otherwise developed a CCR.^{13,26,28} To maximize the opportunity for OP, the OPRA trial introduced the concept of an NCR to define a group of patients without gross residual tumor but with clinical, endoscopic, and MRI characteristics not meeting the accepted criteria of a CCR.¹⁷ In our study, most patients achieved a CCR or NCR when clinical tumor response was assessed at a median of 7 weeks from completion of TNT and were initially offered WW. Consistent with the retrospective literature,^{3,8,29-31} most patients with a CCR never developed

Figure 3. Disease-Free Survival (DFS), Local Recurrence-Free Survival (LRFS), Distant Metastasis-Free Survival (DMFS), and Overall Survival (OS)



The figure shows DFS (A), LRFS (B), DMFS (C), and OS (D) according to clinical tumor response grade by intention to treat. CCR indicates clinical complete response; ICR incomplete clinical response; NCR, near complete response; TAF, tumor assessment form.

local regrowth and achieved sustained OP. The rate of local regrowth for the CCR group was comparable with previous retrospective case series^{3,32} reporting only on CCR patients. Of the patients with an NCR, almost one-half developed local regrowth by 5 years and ultimately required TME. However, this finding means that approximately one-half of patients with an NCR avoided surgery. These results are consistent with a recent retrospective study¹³ that reported a 47% OP rate in patients with rectal cancer who were given additional time to respond after neoadjuvant therapy.

A concern with OP strategies is the potential increased risk for distant metastases in patients with an initial CCR or NCR who are offered WW and subsequently develop a local regrowth.^{8,33} In our study, the rate of distant metastasis in patients with a sustained CCR who were offered WW was lower compared with patients who were offered WW and developed local regrowth. However, this finding does not imply that a metastasis necessarily originates from tumor regrowth. Our series also showed that the rate of distant metastasis among patients with a CCR or NCR who developed tumor regrowth was similar to patients recommended TME immediately after restaging. These results could suggest that the risk of metastasis for patients without a sustained complete response is similar independent of immediate surgery for incomplete response or delayed surgery for tumor regrowth. Furthermore, these results emphasize the favorable outcomes of patients with a sustained complete response compared with patients with residual tumor at the primary site. It is possible to speculate that lack of response, manifested as tumor persistence or regrowth, represents aggressive biology and a greater risk of metastasis. Interestingly, our data also showed that the rate of distant metastases after sustained clinical tumor response in patients who achieved OP and did not experience tumor regrowth was higher in the NCR group than in the CCR group. There is not an obvious explanation for this finding. We cannot exclude the possibility that some of the NCR patients with an apparent sustained CCR and distant metastasis may also have had occult but viable cancer cells at the primary tumor site that could manifest with longer follow-up. However, the proportions of distant metastases in both groups, 5.2% in the CCR group and 13.0% in the NCR group, are in the range of distant metastases seen in patients with rectal cancer with PCR after chemoradiation and TME.^{1,34,35}

There is ample evidence suggesting that pathologic tumor response to preoperative chemoradiation has prognostic value in patients with rectal cancer.^{1,34-36} In pathologic specimens from patients with stage II and III rectal cancers treated with chemoradiation, Park et al³⁴ reported that PCR (ypT0N0) was associated with excellent outcomes with few distant metastases. In addition, an intermediate pathologic response (ypT1N0-ypT2N0) had improved oncologic outcomes compared with a poor response (ypT3, ypT4, or N+). Similarly, Fokas et al³⁵ showed stratification of pathologic response with a simplified 3-tier tumor regression schema, which was associated with outcomes in patients with locally advanced rectal cancer treated with neoadjuvant therapy and TME surgery.³⁶ The results of the OPRA trial mirror these pathologic studies and suggest that clinical stratification of tumor response after TNT has similar prognostic implications; this also supports the idea that the lack of clinical tumor response to neoadjuvant therapy reflects an inherent aggressive biology of the tumor that is manifested by a propensity to resist neoadjuvant therapy and to metastasize. Our study hypothesizes that across clinical tumor response grades, prognostication is largely independent of surgical management of the primary tumor.

Limitations

There are some limitations to our study. First, the clinical tumor response grades were based on the surgeon's assessment of the endoscopic and digital rectal examinations at restaging. The contribution of the MRI studies was not fully ascertained in this study. However, the study protocol recommended giving endoscopic assessment precedence over MRI imaging in tumor response decision making.⁵ Further work is needed to improve the diagnostic accuracy overall. Merging endoscopic imaging and MRI may provide insight into the optimal identification of patients most likely to achieve long-term OP. Additionally, other tools, such as artificial intelligence or narrow band imaging, may be coupled with endoscopy and provide additional methods for improving the current

accuracy. Second, although the study protocol standardized the definitions for clinical tumor response into 3 grades, the interpretation of the images and assignment to a response grade was subjective.³⁷ Although central review of the images may have provided different results, the approach used in the OPRA trial more closely mirrors the image interpretation and decision-making process that would be implemented in the community. Third, the time of assessment of clinical tumor response after TNT was chosen somewhat arbitrarily on the basis of clinical experience. It is possible that a different timing for the assessment of clinical tumor response would have provided different results.

Conclusions

In this secondary analysis of the OPRA trial, there was a higher probability of tumor regrowth for patients with an NCR compared with a CCR, but a significant proportion of patients achieved a sustained CCR and OP. The 3-tier grading schema has prognostic implications for recurrence and survival in patients with locally advanced rectal cancer who received TNT and should be used to counsel patients regarding their expected outcomes.

ARTICLE INFORMATION

Accepted for Publication: November 20, 2023.

Published: January 9, 2024. doi:10.1001/jamanetworkopen.2023.50903

Open Access: This is an open access article distributed under the terms of the [CC-BY License](#). © 2024 Thompson HM et al. *JAMA Network Open*.

Corresponding Author: Julio Garcia-Aguilar, MD, PhD, Department of Surgery, Memorial Sloan Kettering Cancer Center, New York, NY 10065 (garciaaj@mskcc.org).

Author Affiliations: Colorectal Service, Department of Surgery, Memorial Sloan Kettering Cancer Center, New York, New York (Thompson, Omer, Kim, Yuval, Veheij, Lee, Garcia-Aguilar); Department of Epidemiology & Biostatistics, Memorial Sloan Kettering Cancer Center, New York, New York (Lin, Qin); Department of Radiology, Memorial Sloan Kettering Cancer Center, New York, New York (Gollub); Department of Radiation Oncology, Memorial Sloan Kettering Cancer Center, New York, New York (Wu); Department of Quantitative Sciences, Cleveland Clinic, Cleveland, Ohio (Patil); James P. Wilmot Cancer Center, University of Rochester, Rochester, New York (Hezel); Department of Surgery, University of South Florida, Tampa (Marcet); Department of Surgery, University of Vermont, Burlington (Cataldo); Department of Surgery, University of Chicago, Chicago, Illinois (Polite); Department of Surgery, Oregon Health & Science University, Portland (Herzig); Department of Surgery, Cleveland Clinic, Cleveland, Ohio (Liska); Department of Surgery, John Muir Health, Walnut Creek, California (Oommen); Department of Surgery, University Hospital, University of Virginia Health System, Charlottesville (Friel); Department of Surgery, Creighton University Medical Center, Omaha, Nebraska (Ternent); Department of Medicine, University of Washington, Seattle (Coveler); Department of Surgery, Washington University, St Louis, Missouri (Hunt).

Author Contributions: Dr Garcia-Aguilar had full access to all of the data in the study and takes responsibility for the integrity of the data and the accuracy of the data analysis.

Concept and design: Thompson, Qin, Gollub, Wu, Patil, Marcet, Oommen, Hunt, Garcia-Aguilar.

Acquisition, analysis, or interpretation of data: Thompson, Omer, Lin, Kim, Yuval, Verheij, Qin, Gollub, Wu, Lee, Patil, Hezel, Cataldo, Polite, Herzig, Liska, Oommen, Friel, Ternent, Coveler, Hunt, Garcia-Aguilar.

Drafting of the manuscript: Thompson, Omer, Lee, Patil.

Critical review of the manuscript for important intellectual content: Lin, Kim, Yuval, Verheij, Qin, Gollub, Wu, Patil, Hezel, Marcet, Cataldo, Polite, Herzig, Liska, Oommen, Friel, Ternent, Coveler, Hunt, Garcia-Aguilar.

Statistical analysis: Omer, Lin, Verheij, Qin, Patil.

Obtained funding: Gollub, Garcia-Aguilar.

Administrative, technical, or material support: Omer, Kim, Verheij, Gollub, Wu, Lee, Cataldo, Ternent, Coveler.

Supervision: Omer, Yuval, Qin, Wu, Marcet, Liska, Oommen, Friel, Coveler, Garcia-Aguilar.

Conflict of Interest Disclosures: Dr Wu reported serving on an advisory board for Simphotek outside the submitted work. Dr Patil reported receiving personal fees from ByHeart outside the submitted work. Dr Polite reported receiving personal fees from Natera outside the submitted work. Dr Liska reported receiving personal fees from Olympus, Bard, and Freenome outside the submitted work. Dr Coveler reported receiving grants from AstraZeneca, Actuate, Nextrast, NuCana, Amgen, Novocure, AbGenomics, and Seagen outside the submitted work. Dr Garcia-Aguilar reported receiving personal fees from Medtronic, Johnson & Johnson, and Intuitive Surgical outside the submitted work. No other disclosures were reported.

Funding/Support: This work was funded in part by the National Cancer Institute (grant R01CA182551 to Drs Thompson and Garcia-Aguilar; grant P30CA008748 to Drs Thompson, Yuval, and Garcia-Aguilar; and grant T32CA009501 to Drs Thompson, Yuval, and Garcia-Aguilar).

Role of the Funder/Sponsor: The funder had no role in the design and conduct of the study; collection, management, analysis, and interpretation of the data; preparation, review, or approval of the manuscript; and decision to submit the manuscript for publication.

Meeting Presentation: This study was presented at the Annual Meeting of the American Society of Clinical Oncology; June 4, 2021; virtual.

Data Sharing Statement: See [Supplement 3](#).

Additional Contributions: We acknowledge Arthur Gelmis, BS (Memorial Sloan Kettering Cancer Center), for editing the manuscript. He was not additionally compensated for his time.

REFERENCES

1. Maas M, Nelemans PJ, Valentini V, et al. Long-term outcome in patients with a pathological complete response after chemoradiation for rectal cancer: a pooled analysis of individual patient data. *Lancet Oncol*. 2010;11(9):835-844. doi:10.1016/S1470-2045(10)70172-8
2. Cerdán-Santacruz C, Vailati BB, São Julião GP, Habr-Gama A, Perez RO. Watch and wait: why, to whom and how. *Surg Oncol*. 2022;43:101774. doi:10.1016/j.suronc.2022.101774
3. Dattani M, Heald RJ, Goussous G, et al. Oncological and survival outcomes in watch and wait patients with a clinical complete response after neoadjuvant chemoradiotherapy for rectal cancer: a systematic review and pooled analysis. *Ann Surg*. 2018;268(6):955-967. doi:10.1097/SLA.0000000000002761
4. Dossa F, Chesney TR, Acuna SA, Baxter NN. A watch-and-wait approach for locally advanced rectal cancer after a clinical complete response following neoadjuvant chemoradiation: a systematic review and meta-analysis. *Lancet Gastroenterol Hepatol*. 2017;2(7):501-513. doi:10.1016/S2468-1253(17)30074-2
5. Garcia-Aguilar J, Patil S, Gollub MJ, et al. Organ preservation in patients with rectal adenocarcinoma treated with total neoadjuvant therapy. *J Clin Oncol*. 2022;40(23):2546-2556. doi:10.1200/JCO.22.00032
6. Maas M, Beets-Tan RG, Lambregts DM, et al. Wait-and-see policy for clinical complete responders after chemoradiation for rectal cancer. *J Clin Oncol*. 2011;29(35):4633-4640. doi:10.1200/JCO.2011.37.7176
7. Smith JD, Ruby JA, Goodman KA, et al. Nonoperative management of rectal cancer with complete clinical response after neoadjuvant therapy. *Ann Surg*. 2012;256(6):965-972. doi:10.1097/SLA.0b013e3182759f1c
8. van der Valk MJM, Hilling DE, Bastiaannet E, et al; IWWD Consortium. Long-term outcomes of clinical complete responders after neoadjuvant treatment for rectal cancer in the International Watch & Wait Database (IWWD): an international multicentre registry study. *Lancet*. 2018;391(10139):2537-2545. doi:10.1016/S0140-6736(18)31078-X
9. van der Sande ME, Figueiredo N, Beets GL. Management and outcome of local regrowths in a watch-and-wait prospective cohort for complete responses in rectal cancer. *Ann Surg*. 2021;274(6):e1056-e1062. doi:10.1097/SLA.0000000000003738
10. Garcia-Aguilar J, Smith DD, Avila K, Bergsland EK, Chu P, Krieg RM; Timing of Rectal Cancer Response to Chemoradiation Consortium. Optimal timing of surgery after chemoradiation for advanced rectal cancer: preliminary results of a multicenter, nonrandomized phase II prospective trial. *Ann Surg*. 2011;254(1):97-102. doi:10.1097/SLA.0b013e3182196e1f
11. Kwak YK, Kim K, Lee JH, et al. Timely tumor response analysis after preoperative chemoradiotherapy and curative surgery in locally advanced rectal cancer: a multi-institutional study for optimal surgical timing in rectal cancer. *Radiother Oncol*. 2016;119(3):512-518. doi:10.1016/j.radonc.2016.03.017
12. Foster JD, Jones EL, Falk S, Cooper EJ, Francis NK. Timing of surgery after long-course neoadjuvant chemoradiotherapy for rectal cancer: a systematic review of the literature. *Dis Colon Rectum*. 2013;56(7):921-930. doi:10.1097/DCR.0b013e31828aedcb

13. Hupkens BJP, Maas M, Martens MH, et al. Organ preservation in rectal cancer after chemoradiation: should we extend the observation period in patients with a clinical near-complete response? *Ann Surg Oncol*. 2018;25(1):197-203. doi:10.1245/s10434-017-6213-8
14. Temmink SJD, Peeters KCMJ, Bahadoer RR, et al; International Watch & Wait Database (IWWD) Consortium. Watch and wait after neoadjuvant treatment in rectal cancer: comparison of outcomes in patients with and without a complete response at first reassessment in the International Watch & Wait Database (IWWD). *Br J Surg*. 2023;110(6):676-684. doi:10.1093/bjs/znad051
15. Habr-Gama A, Perez RO, Nadalin W, et al. Operative versus nonoperative treatment for stage 0 distal rectal cancer following chemoradiation therapy: long-term results. *Ann Surg*. 2004;240(4):711-717. doi:10.1097/01.sla.0000141194.27992.32
16. Smith FM, Chang KH, Sheahan K, Hyland J, O'Connell PR, Winter DC. The surgical significance of residual mucosal abnormalities in rectal cancer following neoadjuvant chemoradiotherapy. *Br J Surg*. 2012;99(7):993-1001. doi:10.1002/bjs.8700
17. Smith JJ, Chow OS, Gollub MJ, et al; Rectal Cancer Consortium. Organ preservation in rectal adenocarcinoma: a phase II randomized controlled trial evaluating 3-year disease-free survival in patients with locally advanced rectal cancer treated with chemoradiation plus induction or consolidation chemotherapy, and total mesorectal excision or nonoperative management. *BMC Cancer*. 2015;15:767. doi:10.1186/s12885-015-1632-z
18. Benson AB, Venook AP, Al-Hawary MM, et al. NCCN guidelines insights: rectal cancer, version 6.2020. *J Natl Compr Canc Netw*. 2020;18(7):806-815. doi:10.6004/jnccn.2020.0032
19. Habr-Gama A, Perez RO, Wynn G, Marks J, Kessler H, Gama-Rodrigues J. Complete clinical response after neoadjuvant chemoradiation therapy for distal rectal cancer: characterization of clinical and endoscopic findings for standardization. *Dis Colon Rectum*. 2010;53(12):1692-1698. doi:10.1007/DCR.Ob013e318f42b89
20. López-Campos F, Martín-Martín M, Fornell-Pérez R, et al. Watch and wait approach in rectal cancer: current controversies and future directions. *World J Gastroenterol*. 2020;26(29):4218-4239. doi:10.3748/wjg.v26.i29.4218
21. Francois Y, Nemoz CJ, Baulieux J, et al. Influence of the interval between preoperative radiation therapy and surgery on downstaging and on the rate of sphincter-sparing surgery for rectal cancer: the Lyon R90-01 randomized trial. *J Clin Oncol*. 1999;17(8):2396. doi:10.1200/JCO.1999.17.8.2396
22. Stein DE, Mahmoud NN, Anné PR, et al. Longer time interval between completion of neoadjuvant chemoradiation and surgical resection does not improve downstaging of rectal carcinoma. *Dis Colon Rectum*. 2003;46(4):448-453. doi:10.1007/s10350-004-6579-0
23. Moore HG, Gittleman AE, Minsky BD, et al. Rate of pathologic complete response with increased interval between preoperative combined modality therapy and rectal cancer resection. *Dis Colon Rectum*. 2004;47(3):279-286. doi:10.1007/s10350-003-0062-1
24. Kerr SF, Norton S, Glynn-Jones R. Delaying surgery after neoadjuvant chemoradiotherapy for rectal cancer may reduce postoperative morbidity without compromising prognosis. *Br J Surg*. 2008;95(12):1534-1540. doi:10.1002/bjs.6377
25. Evans J, Patel U, Brown G. Rectal cancer: primary staging and assessment after chemoradiotherapy. *Semin Radiat Oncol*. 2011;21(3):169-177. doi:10.1016/j.semradonc.2011.02.002
26. Petrelli F, Sgroi G, Sarti E, Barni S. Increasing the interval between neoadjuvant chemoradiotherapy and surgery in rectal cancer: a meta-analysis of published studies. *Ann Surg*. 2016;263(3):458-464. doi:10.1097/SLA.000000000000368
27. Du D, Su Z, Wang D, Liu W, Wei Z. Optimal interval to surgery after neoadjuvant chemoradiotherapy in rectal cancer: a systematic review and meta-analysis. *Clin Colorectal Cancer*. 2018;17(1):13-24. doi:10.1016/j.clcc.2017.10.012
28. Habr-Gama A, São Julião GP, Fernandez LM, et al. Achieving a complete clinical response after neoadjuvant chemoradiation that does not require surgical resection: it may take longer than you think! *Dis Colon Rectum*. 2019;62(7):802-808. doi:10.1097/DCR.0000000000001338
29. Smith JJ, Strombom P, Chow OS, et al. Assessment of a watch-and-wait strategy for rectal cancer in patients with a complete response after neoadjuvant therapy. *JAMA Oncol*. 2019;5(4):e185896. doi:10.1001/jamaoncol.2018.5896
30. Renehan AG, Malcomson L, Emsley R, et al. Watch-and-wait approach versus surgical resection after chemoradiotherapy for patients with rectal cancer (the OnCoRe project): a propensity-score matched cohort analysis. *Lancet Oncol*. 2016;17(2):174-183. doi:10.1016/S1470-2045(15)00467-2

31. Chadi SA, Malcomson L, Ensor J, et al. Factors affecting local regrowth after watch and wait for patients with a clinical complete response following chemoradiotherapy in rectal cancer (InterCoRe consortium): an individual participant data meta-analysis. *Lancet Gastroenterol Hepatol*. 2018;3(12):825-836. doi:10.1016/S2468-1253(18)30301-7
32. Cerdán-Santacruz C, Vailati BB, São Julião GP, Habr-Gama A, Perez RO. Local tumor regrowth after clinical complete response following neoadjuvant therapy for rectal cancer: what happens when organ preservation falls short. *Tech Coloproctol*. 2023;27(1):1-9. doi:10.1007/s10151-022-02654-5
33. Fernandez LM, São Julião GP, Renehan AG, et al; International Watch & Wait Database (IWWD) Consortium. The risk of distant metastases in patients with clinical complete response managed by watch and wait after neoadjuvant therapy for rectal cancer: the influence of local regrowth in the International Watch and Wait Database. *Dis Colon Rectum*. 2023;66(1):41-49. doi:10.1097/DCR.0000000000002494
34. Park IJ, You YN, Agarwal A, et al. Neoadjuvant treatment response as an early response indicator for patients with rectal cancer. *J Clin Oncol*. 2012;30(15):1770-1776. doi:10.1200/JCO.2011.39.7901
35. Fokas E, Liersch T, Fietkau R, et al. Tumor regression grading after preoperative chemoradiotherapy for locally advanced rectal carcinoma revisited: updated results of the CAO/ARO/AIO-94 trial. *J Clin Oncol*. 2014;32(15):1554-1562. doi:10.1200/JCO.2013.54.3769
36. Rödel C, Martus P, Papadopoulos T, et al. Prognostic significance of tumor regression after preoperative chemoradiotherapy for rectal cancer. *J Clin Oncol*. 2005;23(34):8688-8696. doi:10.1200/JCO.2005.02.1329
37. Felder SI, Patil S, Kennedy E, Garcia-Aguilar J. Endoscopic feature and response reproducibility in tumor assessment after neoadjuvant therapy for rectal adenocarcinoma. *Ann Surg Oncol*. 2021;28(9):5205-5223. doi:10.1245/s10434-021-09827-w

SUPPLEMENT 1.

Trial Protocol

SUPPLEMENT 2.

eFigure 1. Three-Tier Schema for Grading Tumor Response

eTable. Local and Distant Metastases for TME at Restaging Versus TME After Local Regrowth in Relation to Clinical Tumor Response

eFigure 2. Rates of Organ Preservation and Disease-Free Survival for the Full Cohort

eFigure 3. Rates of Local Regrowth

SUPPLEMENT 3.

Data Sharing Statement