

10-22-2021

Elf The Musical (program)

Follow this and additional works at: <https://scholarworks.harding.edu/theatre-history>



theatre arts

HARDING UNIVERSITY



The Musical

OCT. 22-23
BENSON AUDITORIUM

theatre arts

HARDING UNIVERSITY



The Musical

Book by

Thomas Meehan
and Bob Martin

Music by

Matthew Sklar

Lyrics by

Chad Beguelin

Based upon the New Line Cinema film written by

David Berenbaum

Originally produced by

Warner Bros. Theatre Ventures
in association with Unique Features

Elf-The Musical is presented through special arrangement with Music Theatre International (MTI). All authorized performance materials are also supplied by MTI. www.mtishows.com

Finale costume designers

Vincent Scassellati and Kenneth Burrell

Finale costumes provided by

The Kansas City Costume Company

Performer flying effects created by Vertigo™
www.getvertigo.com.



Welcome to Harding University Homecoming 2021

We are so glad to have you back on campus for Homecoming. This is always a special time for reunions and celebrations and an opportunity to remember the blessings Harding has brought to our lives. Each

year, I look forward to Homecoming and the fact that it brings so many alumni together on campus, but I most look forward to the annual musical production. Our extremely talented students and the University's theatre department continue to produce professional performances that guests, parents and friends can experience.

One of the things that makes Harding so meaningful is the relationships that are built on this campus in a variety of ways. Many of you likely have relationships that were initiated while you were students, perhaps on the very stage in front of you, and it's a joyous occasion to remember those times while witnessing current students building lifelong friendships before our eyes. These wonderful students continue to impress me with their enthusiasm and joy, and I hope that you'll sit back, relax and enjoy this production of *Elf*.

A handwritten signature in black ink that reads "David B. Burks". The signature is written in a cursive, flowing style.

Dr. David B. Burks
President

cast

Buddy the Elf Asher Patten

Jovie Morgan Wrigley

Walter Hobbs William Harness

Emily Hobbs Lydia Leila Black

Michael Hobbs Kylie Coffey

Deb Jonna Marie Fields

Macy's Manager Keller Montgomery

Mr. Greenway Matthew Floyd

Santa Claus Joel Hoggard

Boy Joshua McGlawn



male ensemble

Chip Ashley
Hayden Bailey
Ben Bingham
T.J. Brown
Seth Campbell

Andrew Medley
Jackson Samuel
Mason Smith
Dawson Teague
Jackson Trahant

female ensemble

Madilyn Canterbury
Abbey Hackett
Anna Grace Haley
Avery Jacobs
Aubrey Jones

Carley Keller
Amelia Kretzer
Emma McDaris
Camille Overman
Mary Evelyn Roberson

vocalists

Audra Graves
Merek Hailey
Ethan Kille
Hannah Logsdon

Josh Mellor
Zoe Smith
Cynthia Turner
Sebastian Vargas



production team

Director	Britton Lynn
Music Director	Dr. Susan E. Shirel
Conductor	Dr. Andrew Cook
Set Designer	Luis Ramirez
Costumer	Katy White
Technical Director	Seth Fish
Sound Designer	David Robison
Lighting Director	Steve Martin
Assistant Lighting Director	Jonathan Aders
Choreographer	Dr. Penny McGlawn
Collaborative Pianist	Luke Kays
Box Office Manager	Joanna Crisco
Production Manager	Cassie Renee Bennett
Graphic Designer	Tim Cox

production team (students)

Stage Manager	Kaitlyn Harrington
Assistant Stage Manager	Levi Huddleston
Costume Designer	Loren Smither
Master Carpenter	Sarah Johnson
Dance Captain/Swing	Corinne Tabor Valentino Warren II
Audio	Patrick Kelly
Audio Assistant	Gabi Gonzalez
Props	Ocean Furbee Clayton Hull
Dresser	Berkeley Pillay Loren Smither

act I

Overture

Christmastown Santa, Buddy, Company

World's Greatest Dad Buddy

In the Way Deb, Walter, Emily,
Michael, Company

Sparklejollytwinklejingley Buddy, Store Manager,
Company

I'll Believe in You Michael and Emily

In the Way (reprise) Emily and Walter

Just Like Him Buddy, Deb, Company

A Christmas Song Buddy, Jovie, Company

I'll Believe in You (reprise) Buddy and Company

act II

Entr'acte

Nobody Cares About Santa Fake Santas,
Store Manager, Buddy

Never Fall in Love Jovie

There Is a Santa Claus Michael and Emily

The Story of Buddy the Elf Buddy, Michael, Walter,
Emily, Deb, Chadwick,
Matthews, Mr. Greenway, Company

Nobody Cares About Santa (reprise) Santa

A Christmas Song (reprise) Jovie, Buddy, Emily,
Michael, Walter, Company

Finale Company

production crews

Backstage Crew

Janelle Campbell
Andy Chaves
Brandon Furbee
Ocean Furbee
Victoria Goodwin
Sara Beth Hardin
Logan Hoffer
Gabe Hosticka
Macy Howard
Sarah Johnson
Kara Johnson
Kendall Moshinsky
Nicole Randall
Kat Ream
Madison Soper
Alaethia Thompson
Shiloh Wrigley

Costume Build Crew

Cassie Chisum
Megan Drause
Jonna Marie Fields
Elise Gibson
Jamie Hall
Berkeley Pillay
Hannah Wolfe

Fly Operators

Brandon Furbee
Kat Ream
Sarah Johnson

Follow Spot Operators

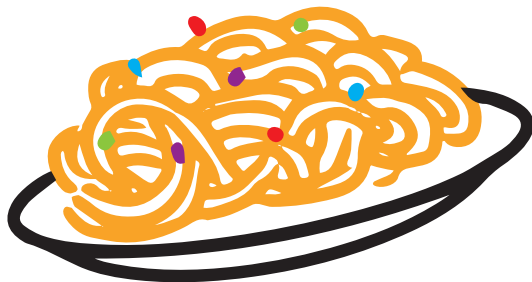
David Clark
Derrek Jones
Hannah Haddix
Deborah Samuelson

Shop Crew

Lydia Leila Black
Janelle Campbell
Matthew Floyd
Brandon Furbee
Ocean Furbee
David Garton
Gabi Gonzalez
Victoria Goodwin
Sara Beth Hardin
Michaela Hutcheson
Derrek Jones
Kat Ream
Deborah Samuelson
Cooper Wright
Shiloh Wrigley

Video Production Crew

Producer Charles Bane
Video Director. Jillian Jarvis
Camera Operators . . . Caroline Sellers
Meleri York



cast bios



Chip Ashley

Ensemble

Chip Ashley is a senior vocal music and media production major from Murfreesboro, Tennessee. He was a mic stand singer for *Big Fish* and a director for Spring Sing 2021. He'd like to give thanks to his wonderful friends and family who love and support everything he does!



Hayden Bailey

Ensemble

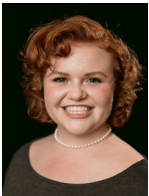
Hayden Bailey is a junior general theatre major from Searcy, Arkansas with a minor in integrated marketing communication. Some of his other work includes playing the role of Greg in *Hands on a Hardbody*, sound effects op for *Much Ado About Nothing* and lighting designer for Searcy Summer Dinner Theatre's *Farce of Habit*. He is so blessed to be a part of this cast and production process.



Ben Bingham

Ensemble, u/s Buddy

Ben Bingham is a freshman theatre major from Calhoun, Georgia. Some of his previous shows include *Chicago*, *Freaky Friday* and *Matilda*. Ben is also a member of The Pied Pipers. He can't wait to perform with this amazing cast and crew.



Lydia Leila Black

Emily Hobbs

Lydia Black is a senior acting major, minoring in entrepreneurial management, from Kilgore, Texas. Some of her previous roles at Harding include Miss Honey in *Matilda the Musical*, voice actress in *Vintage Hitchcock*, and ensemble member in *Big Fish* and *Struggle Bus*. She is very grateful for the dear family and home the Harding Department of Theatre has been to her for the past few years.



T.J. Brown

Ensemble

T.J. Brown is a freshman theatre education major from Hartselle, Alabama. His previous experience includes acting as Oliver Warbucks in *Annie* and the Cat in the Hat in *Suessical*, as well as numerous tech and stagehand positions. He is thankful for his family and friends, both back home and at Harding, for all their love and support.



Seth Campbell

Ensemble

Seth Campbell is a freshman theatre major from Searcy, Arkansas. Some of his previous work includes ensemble for *Newsies* and *Beauty & The Beast* and leading roles in *Anastasia* and *Our Town*. Seth is extremely excited to be a part of this show, and he is thankful for all of the hard work from everyone involved in *Elf*.



Madilyn Canterbury

Ensemble

Madilyn Canterbury is a freshman theatre education major from Memphis, Tennessee. Her previous work has been from high school theatre. She is so thankful that she was cast in this musical and blessed by these amazing people.



Kylie Coffey

Michael Hobbs

Kylie Coffey is a senior theatre education major from Vienna, Virginia. Her past roles include Kelli Mangrum in *Hands on a Hardbody* and Margaret in *To the Lovely Margaret*. Her previous technical work includes being the stage manager for *Much Ado about Nothing* and a followspot operator for *Matilda*. She has loved celebrating Christmas since April and working with this magical cast and crew.



Jonna Marie Fields

Deb

Jonna Fields is a junior acting major from Kansas City, Missouri. Some of her previous works include Norma Valverde in *Hands On A Hardbody* and Stevie in *Vintage Hitchcock* here at Harding University. She is very grateful for the opportunity to work with such a talented cast and production team.



Matthew Floyd

Mr. Greenway

Matthew Floyd is a junior acting major from Kemp, Texas. Some of his previous works include *Matilda*, *Vintage Hitchcock* and *Much Ado About Nothing*. I would like to give a special thanks to myself. Without me, I would not get out of bed every morning.



Abbey Hackett

Ensemble

Abbey Hackett is a sophomore communication sciences and disorders major from Nashville, Tennessee. She was involved in the Spring Sing 2021 "Can't Stop the Feelings!" show. This is her first official production with Harding Department of Theatre. Her favorite performances from high school were *Into the Woods*, *The 25th Annual Putnam County Spelling Bee* and *Romeo and Juliet*.

**Anna Grace Haley***Ensemble, u/s Deb*

Anna Grace Haley is a sophomore computer science major, with a minor in mathematics from Tuscaloosa, Alabama. She has been on the stage since the age of five. She has been in *The Wizard of Oz* as Dorothy, *Peter Pan* as Michael, *Mulan Jr.* as Mulan, and many more. She has also won numerous theatre and music awards. She wants to thank her friends and family for always supporting her.

**William Harness***Walter Hobbs*

William Harness is a sophomore political science major and spanish minor from Searcy, Arkansas. This is his first performance for Harding University; however, he performed in *Newsies* as well as *Beauty and the Beast* for Harding Academy. He is especially thankful for his friends and family who have supported his aspirations in the world of theatre in recent years.

**Joel Hoggard***Santa Claus*

Joel Hoggard ('03) is an old man who is grateful for the opportunity to perform with this talented cast. He appeared in Harding's Homecoming productions of *Shrek* and *Big Fish*. He is married to Emily (Richardson) Hoggard, and their children are Isabel, Gracie and Luke.

**Avery Jacobs***Ensemble*

Avery Jacobs is a freshman vocal music major from Anchorage, Alaska. Previous work experiences include multiple productions with Perseverance Theatre Company and being involved in theatre since the age of 11. She's so excited to be here and be a part of this wonderful cast and crew!

**Aubrey Jones***Ensemble*

Aubrey Jones is a freshman theatre education major from Searcy, Arkansas. This is her first production as a student at Harding, and she is very excited to be joining the cast. She would like to thank her family for instilling a love for theatre in her and for being so supportive throughout the years.

**Carley Keller***Ensemble*

Carley Keller is a senior theatre major and music minor from Loganville, Georgia. Some of her previous work includes Campus Player's *Our Place* and Spring Sing Ensemble 2021. She gives thanks to her family and friends who have supported her in this journey and can not wait to perform along side this incredible cast and crew!



Amelia Kretzer

Ensemble

Amelia Kretzer is a sophomore visual art studio major from Flat Gap, Kentucky. In the past she has performed in over 20 theatrical productions — most recently as Donna in *Mamma Mia!* and Sister Robert Anne in *Nunsense*. She is so excited to be back on stage again and would like to thank her family and friends for all their support this semester.



Emma McDaris

Ensemble

Emma McDaris is a freshman multimedia journalism major from Hartville, Missouri. Her previous works include *Frozen Jr.* (Elsa), *Mamma Mia* (dance captain), *Little Mermaid Jr.* (Ariel), and *Guys and Dolls Jr.* (General Cartwright/featured dancer). She wants to thank her parents and grandparents as well as anyone who has ever inspired her or taught her in the theatre world.



Andrew Medley

Ensemble

Andrew Medley is a freshman film major from Birmingham, Alabama. He would like to give a huge thank-you to all of the incredible people who were involved in making this production possible and to those who helped teach him along the way.



Keller Montgomery

Macy's Manager, u/s Walter

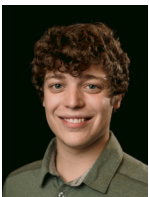
Keller Montgomery is a junior theatre major from Nashville, Tennessee. During his time at Harding, he has played roles in *Matilda*, *Hands on a Hardbody*, *Vintage Hitchcock*, and *The Struggle Bus*, and also participated in Spring Sing 2021 as an ensemble member. He is excited to perform alongside his fellow cast members in *Elf!*



Camille Overman

Ensemble, u/s Jovie

Camille Overman is a senior vocal music education major from Carthage, Texas. Her vocal accomplishments include two-time third place winner at the National Association of Teachers of Singing Conference. She also just recently presented her junior vocal recital. *Elf* is her debut in musical theater. She is grateful for this incredible opportunity to develop her theater skills.



Asher Patten

Buddy the Elf

Asher Patten is a junior acting major from Searcy, Arkansas. He has played many roles in several musicals and plays throughout high school and college, including Joseph in *Joseph and the Amazing Technicolor Dreamcoat*, Jack Kelly in *Newsies*, and Chris Alvaro in *Hands On A Hardbody*. Patten is grateful to God for the opportunity to work with this talented company.



Mary Evelyn Roberson

Ensemble

Mary Evelyn Roberson is a freshman theatre acting major from Searcy, Arkansas. Some of her previous work includes Vivica in *A Killer Party*, ensemble and feature in *Anastasia* and the Wardrobe in *Beauty and the Beast*, etc. She is so grateful for the opportunity to be at Harding University and work with such an amazing and special group of people.



Jackson Samuel

Ensemble

Jackson Samuel is a sophomore exploratory studies major from Rogersville, Missouri. Some of his previous work includes Beast in his high school production of *Beauty and the Beast*, Bert in his high school production of *Mary Poppins* and ensemble in Spring Sing 2021. Jackson has loved being a part of *Elf* and can't wait to perform for everyone!



Mason Smith

Ensemble

Mason Smith is a freshman acting major and criminal justice minor from Hampton, Georgia. His previous notable roles include Perchik in *Fiddler on the Roof*, and Simba in *Lion King*. He is very thankful to have been a part of this show and even more thankful for the friends and family who pushed him to where he is today.



Dawson Teague

Macy's Manager

Dawson Teague is a sophomore accounting major from North Little Rock, Arkansas. Previous roles include Sky Masterson (*Guys and Dolls*), Cat in the Hat (*Seussical*), and Grimsby (*The Little Mermaid*). He is so grateful to Mr. Lynn and Dr. Shirel for the opportunity to be a part of this fabulous show!



Jackson Trahant

Ensemble

Jackson Trahant is a freshman broadcast journalism major and political science minor from Hartville, Missouri. Jackson has performed in seven shows previously, including his portrayal of Kristoff in *Frozen Jr.* He extends his love and thanks to the Hartville Theatre Program and to his amazingly supportive family.



Morgan Wrigley

Jovie

Morgan Wrigley is a junior multimedia journalism major and theatre minor from Blanchard, Oklahoma. Some of her previous Harding credits include *Matilda* (big kid), *Hands on a Hardbody* (Heather), *Transform 2.0*, and Spring Sing 2021 ensemble. She is excited to be part of this production and so thankful for all those who have made it happen!

production team

Britton Lynn

Director

Britton Lynn has been at Harding since 2003. He has directed several shows including *Hands on a Hardbody*, *Annie Get Your Gun!*, *Doubt*, *Charley's Aunt* and *Macbeth*. His set designs include *Matilda*, *Crazy for You*, *The Glass Menagerie* and *Shrek: the Musical!* His students have won awards at regional and national conferences. Follow him on Instagram @blynnndesign.

Dr. Susan E. Shirel

Music Director

Dr. Susan E. Shirel is an assistant professor, serves as the director of choral activities and Concert Choir and teaches voice and music education courses in the Harding Department of Music. Her previous theatre credits include music direction for Homecoming musicals (2011-2014), Spring Sing (2013-2015), *Seussical* (2012), and *Hands on a Hardbody* (2020). She also enjoys being on stage, most recently in Searcy Summer Dinner Theatre's production of *Harvey* (2021).

Andrew Cook

Conductor

Andrew Cook is an associate professor of music at Harding and directs the Harding Jazz Band. Since joining the faculty in 2014, he has served as the conductor of the orchestra for Homecoming musical productions.

Luis Ramirez

Set Designer

Luis Ramirez began his design career at the Academy Theatre in Atlanta. His scenic designs have been seen at Stage One in Louisville, The Body Politic Theatre in Chicago and Saltworks Theatre Company in Pittsburgh, as well as churches and universities. He has designed lighting for the Academy Theatre, The Body Politic Theatre, the recent feature film *Singleton Boulevard* and churches and universities. He was also an art director and exhibit designer in Chicago. Luis earned a Master of Fine Arts in scene design at Carnegie Mellon University. He has taught design at the University of Mississippi, Huntington University, Stephen F. Austin State University and East Texas Baptist University. He was a founding member of Christians in Theatre Arts.

Katy White

Costumer

Katy White is a Harding alumna and has been part of the theatre department since 2015. The Searcy Summer Dinner Theatre *Father of the Bride* and Harding production of *It's A Wonderful Life: a Radio Show* are among her favorite shows she has worked on.

Seth Fish*Technical Director*

Seth Fish is so excited to be back and working on the Homecoming musical. Spending his eighth year as a staff member at Harding is truly a blessing. He would like to thank everyone for their love and support.

David Robison*Sound Designer*

David Robison is the audio events specialist and recording engineer for the University. He has been the sound designer and audio engineer for the Homecoming musicals, Spring Sing and other theatre and campus productions for the past 14 years. He is also an adjunct professor in the communication department and preaches at the Kensett Church of Christ.

Steve Martin*Lighting Director*

Steve Martin has held the position of director of Benson Auditorium technical services since 1989. Steve has been responsible for the lighting of all Spring Sing productions and Homecoming musicals from 1990-2021, concerts and classical lyceums as well as lighting and staging of many other events.

Jonathan Aders*Assistant Lighting Designer*

Jonathan Aders is the event spaces technical assistant for the Harding Department of Theatre. After graduating from Harding with a Bachelor of Arts in theatre, he worked at Lubbock Christian University on shows such as *Music Man* and *Shadowlands*. Previous show contributions at Harding include: projection design for *Big Fish*, lighting design for *Matilda* and design work for Spring Sing.

Penny McLawn*Choreographer*

Penny McGlawn has taught dance independently for 25 years and has been the creative movement adjunct for the Harding Department of Theatre for nine years. She has her doctorate in educational leadership from Trevecca Nazarene University. Penny has choreographed and assisted in numerous musicals and Spring Sing productions in her time at Harding.

Cassie Renee Bennett*Production Manager*

Cassie Renee Bennett is the production manager for Harding University. Cassie has been thrilled to be a part of the team in the Harding Department of Theatre for the past eight years. She has also enjoyed being a performer for many years in Searcy Summer Dinner Theatre. Cassie wants to thank her family and friends for their constant love and support!

Tim Cox*Graphic Designer*

Tim Cox graduated from Harding in 1994 and Savannah College of Art & Design with a Master of Fine Arts in graphic design. He went on to do graphic design for the Central Intelligence Agency for 16 years. He was also an adjunct in the art and design department and a proud sponsor of Knights social club for 13 years. Working with the Office of University Communications and Marketing, he has designed all promotional material for the theatre department since 2017 for *Annie Get Your Gun*.

production team (students)

Kaitlyn Harrington*Stage Manager*

Kaitlyn Harrington is a senior theatre design and production major from Colorado Springs, Colorado. Some of her past experiences include stage manager for Hands on a Hardbody, assistant stage manager for Spring Sing 2019 and stage manager for Searcy Summer Dinner Theatre 2019. She is also excited to be stage manager for Spring Sing 2022. She is thankful for the opportunity to work with such an amazing cast and production team.

Levi Huddleston*Assistant Stage Manager*

Levi Huddleston is a junior theatre design and production and leadership and ministry major from Winston-Salem, North Carolina. Some of his previous work includes running all audio for the 2020-2021 season at Harding as well as working with the build crew for Searcy Summer Dinner Theatre 2021. He loves Harding and is so blessed to be spending these years with incredible friends!

Loren Smither*Costume Designer*

Loren Smither is a senior theatre design and production major from Alma, Arkansas. Her focus is costume design, and she has worked in Harding Theatre's costume shop for two years. *Elf* will be the first production where her costume designs are realized. She would like to thank both of her parents for their never ending love and support.

Corinne Tabor

Dance Captain/Swing

Corinne Tabor is a senior theatre education major from Queen Creek, Arizona. Some of her previous work at Harding includes acting in *Miss Bennet: A Christmas at Pemberley* and *Vintage Hitchcock: A Live Radio Play*. She also directed a show in the 2021 One Act Festival. She is so thankful to have worked with and learned from this incredible crew and cast.

Valentino Warren II

Dance Captain/Swing

Valentino Warren II is a senior theatrical design and production major from Jacksonville, Arkansas. Some of his previous work includes assistant choreographer for *James and The Giant Peach* and cast, former Spring Sing director for several years, cast in several productions and tech for others. He is truly blessed to be part of staff and work with such an enthusiastic group.





special thanks

Brantley Anderson

Maia Bennett

TJ Brown

Alexa Cook

Aubrey Jones

Kimberley Martin

Phallen Reed

Evie Roberson

Madison Soper

Jeff Montgomery

Mark Prior and Video Works

Office of Public Safety

Candice Moore and the Office of
University Communications and

Marketing

Ashel Parsons

theatre arts

HARDING UNIVERSITY

2021-22 Season

“Little Women”

Dec. 9-11, 2021 | Ulrey Performing Arts Center

“Antigone”

Feb. 11-12, 17-19, 2022 | Ulrey Performing Arts Center

Pied Pipers Home Shows

Oct. 23, 2021; April 16, 2022 | Benson steps

Campus Players: “Peter/Wendy”

March 24-26, 2022

Spring Sing 2022 “Moments”

April 14-16, 2022 | Benson Auditorium

One Act Festival

April 21-23, 2022 | Ulrey Performing Arts Center



AVAILABLE AT [HARDINGTICKETS.COM](https://hardingtickets.com) OR 501-279-4276