



Open Research Online

The Open University's repository of research publications and other research outputs

Spirituality as a determinant of health – a health promotion perspective

Conference or Workshop Item

How to cite:

Talley, J. (2016). Spirituality as a determinant of health – a health promotion perspective. In: 2nd International Spirituality in Healthcare Conference: Nurturing the Spirit, 22 Jun 2016, Dublin, Ireland.

For guidance on citations see [FAQs](#).

© [not recorded]

Version: Version of Record

Link(s) to article on publisher's website:
<http://nursing-midwifery.tcd.ie/SIG/>

Copyright and Moral Rights for the articles on this site are retained by the individual authors and/or other copyright owners. For more information on Open Research Online's [data policy](#) on reuse of materials please consult the policies page.

oro.open.ac.uk

Spirituality as a determinant of health – a health promotion perspective

Dr. Janine Talley
Faculty of Health and Social Care, The Open University- j.talley@open.ac.uk

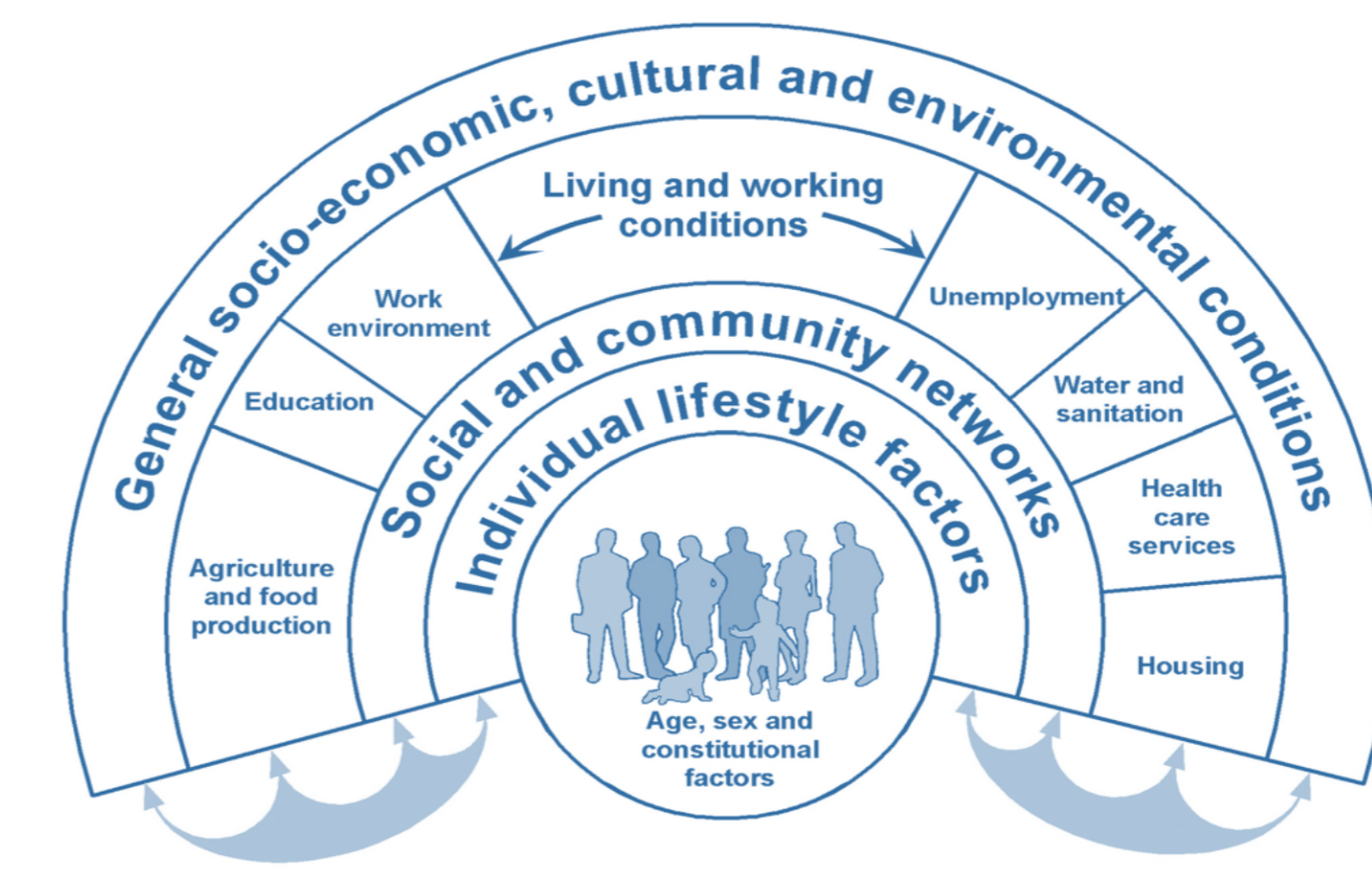
Multidimensional models of health and wellbeing are well accepted

Physical Emotional
Mental Spiritual
Social Societal

Scriven (2010)

But where is spirituality in our understanding and models of what determines health and wellbeing ?

The Main Determinants of Health



Source: Dahlgren and Whitehead, 1993

?

Interventions to improve health and wellbeing		
Upstream	Midstream	Downstream
Preventive	Preventive	Curative
<ul style="list-style-type: none"> Healthy public policy Legislation 	<ul style="list-style-type: none"> Media campaigns Training professionals Community development Healthy settings 	<ul style="list-style-type: none"> Treatment Health education



Another way to think about it
Ubiquitous 'upstream – downstream' river metaphor. (McKinlay, 1979)
People are falling in the river (getting ill), healthcare services and workers are rescuing them. But why are they falling in? What is happening upstream? What can we do to prevent it?

?

- Are we looking far enough back at causal factors- far enough upstream?
- Is our analysis of causes sufficiently sophisticated



Is spirituality at the source of the river?

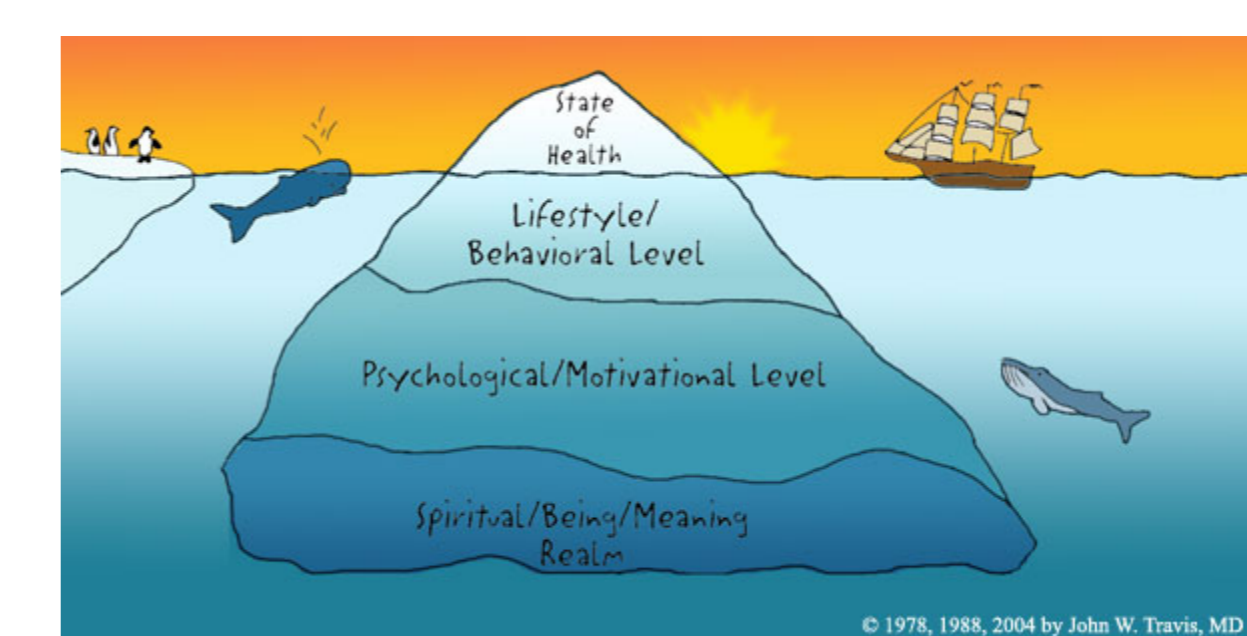
Meaning and identity
(Moss and Thompson 2007)

A relational concept

- a broad set of principles that transcend all religions.
- about the relationship between ourselves and something larger.
- being in the right relationship with all that is.
- an understanding of their mutual interdependence.

(Kaiser 2000)

Spirituality is important for individual health and wellbeing , as a resource and determinant. 'Spiritual affliction' is a precursor to issues such as marginalisation , addiction, poverty, mental illness (Kruk, 2006).



Or even the 'L' word.....

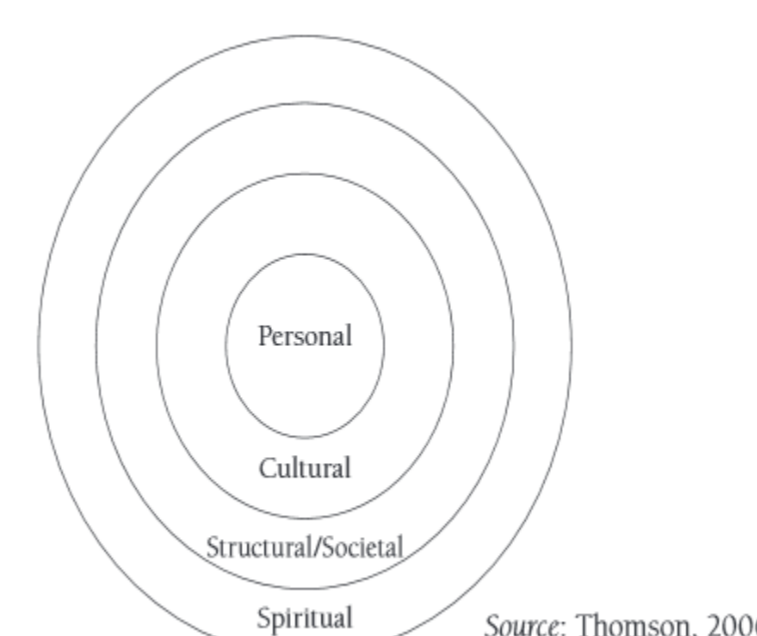
Spirituality is also important at other levels

For example (Moss and Thompson, 2007):

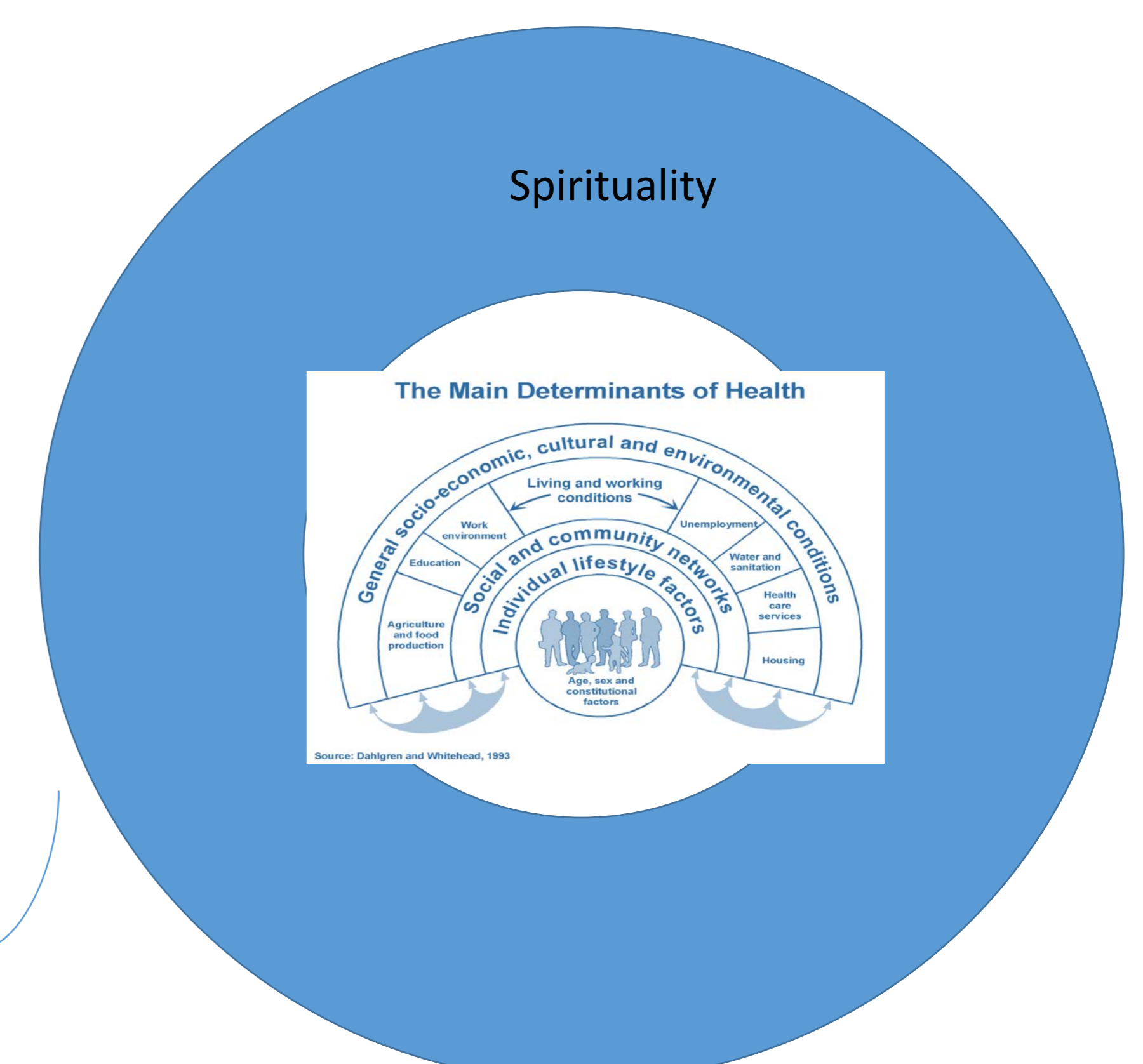
- key links between spirituality, connectedness and social justice
- roots of inequality – not just personal, cultural, structural.....but also spiritual

Social transformation cannot be separated from spiritual transformation (Mandela, 1997)

"At the societal level, indicators [of spiritual health] might be manifestations of solidarity, equity, justice, sexual equality, unity in diversity, participative decision-making, and power sharing."
(Vader, 2006)



Source: Thomson, 2006



A biopsychospiritual model of health
King, 2000; McKee & Chappel, 1992

or
A spiritualsocialpsychobiological model of health ?

References

- Dahlgren, G. and Whitehead, M. (1993) *Tackling Inequalities in Health: What We Can Learn from What Has Been Tried?* Working Paper Prepared for the King's Fund International Seminar on Tackling Inequalities in Health. London: King's Fund.
- Kaiser, L. (2000). "Spirituality and the Physician Executive: Reconciling the Inner Self and the Business of Health Care." *The Physician Executive*. 26(2). March/April.
- King, D. E. (2000). *Faith, spirituality and medicine: Toward the making of a healing practitioner*. Binghamton, NY: Haworth Pastoral Press.
- Kruk, E. (2006) *Spiritual Wounding and Affliction: Facilitating Spiritual Transformation in Social Justice Work*. *Critical Social Work*, 7 (1).
- Mandela, N. (1997) <http://www.anc.org.za/show.php?id=2666>
- McKinlay JB (1979) Epidemiological and political determinants of social policies regarding the public health. *Social Science & Medicine*. 541-58.
- Moss, B. and Thompson, N. (2007) *Spirituality and Equality*. *Journal: Social and Public Policy Review* 1.1.2007. (unpaginated paper).
- McKee, D. D., & Chappel, J. N. (1992). *Spirituality and medical practice*. *Journal of Family Practice*, 35, 201, 205–208.
- Scriven, A. (2010) *Promoting Health: A Practical Guide*. London: Baillière Tindall Elsevier.
- Vader, J. (2006) *Spiritual health: the next frontier*. *European Journal of Public Health*, Vol. 16, No. 5, 457.