

Table with 2 columns: Service Name and Phone Number. Includes: Mailroom Zip Code, Telephone Area Code, Morehead Fire Department, Forest Fire, Saint Clare Medical Center, Morehead State Univ. (All Branches), Morehead News (All Branches), Except Society, Morehead News - Society Only, Rowan County Sheriff, POLICE - City 784-7511 State 784-1127.

# The Morehead News

For Each Copy 15¢ Pay Cashier

Mail Subscription Rates - in Kentucky, one year \$4.50; two years \$8.00; five years \$17.50. Outside Kentucky, one year \$5.00; two years \$9.00; five years \$20.00. Single copy 15¢.

## First Step Toward Re-Assessment Of All Rowan County Property



Rowan County Tax Evaluator (Tax Commissioner) Mrs. Juanita Wilson after virtually being stripped from all power and authority by State Revenue Commissioner James E. Luckett, resigned today. Luckett's representatives have taken over the offices in the courthouse at Morehead. In this picture the first contingent from the Department of Revenue are checking for omitted motor vehicles, one of the charges Luckett made against Mrs. Wilson. From left: Jewell Lewis; Virgil Phillips, who has charge of the re-assessment; and Wilma Rhoton. Phillips said that additional workers, some probably from Frankfort, will be in Morehead "as soon as the maps are ready." He was referring to the voluminous (many pounds) of maps that show every acre in the county. Luckett made "strong charges" against Mrs. Wilson, and ordered that "every piece of property, motor vehicle etc." in Rowan County be re-assessed at 100 percent of present market value. "Phillips could give 'no probably date' when the re-assessment will be completed, but added, 'it's a long and tiresome job because the records are completely out of date.' Mrs. Wilson, a wheel chair patient, countered that the errors had been exaggerated, are only human, and certainly not intentional."

Rowan County Tax Evaluator Juanita Wilson telephoned the Morehead News this morning with: "I have resigned."

## Rowan Tax Evaluator Resigns From Her Office

Rowan County Tax Evaluator Juanita Wilson telephoned the Morehead News this morning with: "I have resigned."

Rowan County Tax Evaluator Juanita Wilson telephoned the Morehead News this morning with: "I have resigned."

Rowan County Tax Evaluator Juanita Wilson telephoned the Morehead News this morning with: "I have resigned."

## Maximum Sentence Given In Dope Peddling Trial

### Murder! Who Is Guilty?

Apparent secrecy was being kept as of this morning by officers investigating the slaying of Vernon Clester Webb, 42, RFD 4, Olive Hill, who was found dead early Monday morning at a residence in Bath County on U.S. 60 about a half-mile west of the Rowan County line.

Heading the investigation are State Police Detective Marion Campbell, Trooper Marvin Jennings; and Bath County Sheriff Rex Crouch.

Webb's body was found in the home. He had been shot from close range through the left eye with a shotgun.

### Harness Appeals 15 Year Prison Term; Horton Convicted Of Wilson Murder; Two Cases Continued As Court 'Drags'

Two cases of "high local and area" interest were disposed of by juries in Rowan Circuit Court before adjournment today, mandatory since the Menifee County term, in the same judicial district, opened Monday morning.

The jury sentenced Edgar Eugene "Sonny" Harness, in his early 20's, of Ashland, former student at Morehead State University, to five years in prison, and a \$5,000 fine, on charges of possessing and selling a drug (LSD).

(probably some Federal) other than the one who swore to the warrant against Harness, have been in Morehead for several weeks, and they are in association with, and have the confidence of, "known" drug sellers or users. This would indicate that other arrests or raids may be forthcoming, although State Police say "most of the peddlers have left the area."

Three Lexington men, including the ones who allegedly sold the marijuana to Harness and the undercover State Police detective, have been arrested, following a Fayette County raid, and are being held there on drug charges.

## Tenure . . . Nunn's Speech Weakens Law Passed To Re-Acredit MSU

Perhaps the "strongest" speech that Gov. Louie B. Nunn has made during the week in an address to the graduating seniors, of which his son was one, at the Frankfort High School commencement.

Senate. "In order that Morehead State College can be re-accredited."

Students with "tenure" provided they play a part in student uprisings. Following are some of the salient quotations from Gov. Nunn's May 28 address.

"Tonight, I speak to my son . . . to your son . . . to your daughter . . . to 45 thousand high school seniors, their parents and their fellow citizens."

"You have lived your life in a period of more comforts and more opportunities than any other generation in the history of our country."

"Speaking for all parents, guardians, teachers and friends, we are proud of you. We extend to you our sincerest and warmest congratulations."

To Re-Acredit Morehead

Morehead Attorney George I. Cline, then a member of the House of Representatives, introduced the "tenure" bill.

"Our public scene is full of overflowing with irrational love groups and hate groups, irrational peace groups and war groups."

"You have school seniors, we say: 'You have been loved since the day you were born. We have watched and nurtured

"No one will ever love you more or give you better advice than those who have directed you through your early life."

"For this land of ours did not just rise up at this time."



PEOPLES BANK *of Morehead*  
**BANKAMERICARD**®

*New! Instant photo identification!*  
**NEW LOOK IN CREDIT CARDS**

JOHN DOE  
 GOOD THRU ► 00/00★ B A C  
 019 123 456 789



*Norma Anderson*

**11 Reasons why Peoples Bank of Morehead** *your BankAmericard Bank personalizes your credit card*

- 1. YOUR OWN COLOR PORTRAIT**  
Offers you a new dimension in BankAmericard benefits... your very own color portrait prevents someone else from using it.
- 2. SPECIAL TREATMENT**  
Presents you in your best light. You're special. No one else can be you. We like you that way.
- 3. MAXIMUM BUSINESS SECURITY**  
Maximum-security to your business friends who honor "The Big One." No more hesitation on their part.
- 4. 2-MINUTES FAST**  
Takes only 2 minutes to put you among the first to lead the way in the wonderful world of "pictured" BankAmericards.
- 5. PERSONAL BUSINESS CARD**  
Becomes your personal "business card" in Morehead and around the world.
- 6. CONVENIENT**  
We'll arrange an appointment at your convenience. It's as simple as signing your name and smiling (or frowning) at the camera.
- 7. GENERAL IDENTIFICATION**  
Great for those times when someone asks, "May I see your identification, please?"
- 8. PROOF OF PEOPLES BANK PROGRESS**  
Our name is Peoples Bank because we're dedicated to serving you better...
- 9. INCREASED RETAIL BUSINESS**  
Polaroid-pictured people are proud of their new cards... delighted to do business with Morehead's leading businesses.
- 10. MAKE NEW FRIENDS**  
It's surprising how—even in Morehead—we can get to know each other better.
- 11. WORLD-WIDE ACCEPTANCE**  
Shopping, travel, cash or instant identification. It's yours with Peoples Bank of Morehead.

Phone 784-4158 for the good news about The Big One



© Servicemarks owned by BankAmerica Service Corporation  
 © BankAmerica Service Corporation Member F.D.I.C.

# Cooper Says He'll 'Retire'

Republican political leaders today were practically ruling out the possibility that U.S. Senator John Sherman Cooper, probably the party's best vote getter, will be a candidate for Governor next year.

Cooper said yesterday in Washington that he plans to "Retire" when his Senate term expires in January 1973.

(The Morehead News editorially stated two months ago that Cooper would not run... in this issue the Publisher's Pen predicts that Bert Combs and Wendell Ford be opposing candidates for Governor in the May, 1971 democratic primary, although they have been political allies in the past... and the GOP nomination will go to either Highway Commissioner Eugene Goss; or to Thurston Morton, Louisville, if Morton can be persuaded to make the race. Combs made a strictly "non-political" speech in Morehead Saturday.)

### May End Long Fight

Cooper, 68, and off-and-on in ill health for the past five years, made his first political race in 1927. Kentucky then was a "solid"

democratic state.

"It's been a hard fight," Cooper told reporters at the nation's capitol, "It's been hard going... I haven't changed plans about my previously announced retirement."

Close friends said that Cooper's wife, a wealthy woman in her own right, had a conclusive influence on the Senator's decision. Mrs. Cooper has often confided: "John has worked long and hard enough, and deserves a rest." Mrs. Cooper, very close with her husband, has shown concern over a period of time about his health. The Kentucky Senator has been outspokenly critical of President Nixon's conduct of the war and the use of troops in Cambodia.

### Cooper Is Senate Stalwart

"My feeling is that I've tried hard, particularly in the last two or three years on these issues. I've got two years left, and that is enough," he added.

"I think I've helped some," Cooper went on. "The fight against the ABM did open up the whole military budget to public scrutiny."

Cooper was a major figure in last year's

unsuccessful Senate effort to limit development of the Safeguard anti-ballistic missile (ABM) system.

Despite his insistence on retiring from the Senate—a decision announced the night in 1968 he was re-elected—some Kentucky Republicans want Cooper to run for governor, a post he sought unsuccessfully in 1939.

However, close friends believe that Cooper's mind is "made-up" and he will not be a gubernatorial candidate. (This issue's Publisher's Pen predicts that Senator and Mrs. Cooper will keep their residence in elite Georgetown, and also build a home at Somerset, his native Kentucky county seat.) Seventh District Congressman Carl D. Perkins who has worked closely with Cooper on "policy" legislation although they are from opposite political parties, attended the dedication of a boys camp Sunday at nearby Grayson reservoir and confided to friends that he didn't think Cooper would be a candidate for Governor, but "it looks like Bert (Combs) and Wendell (Ford) are in the race to stay."

Combs' daughter works in Perkins' Washington office.

# Morehead Golfer, OVC Champion, Invited By NCAA

Ohio Valley Conference golf champ Bill Spannuth of Morehead State University has accepted an invitation to play in the NCAA national tournament next month.

Spannuth, a sophomore from Anderson, Ind., will participate in the individual eliminations June 24-27 at Ohio State University, Columbus, Ohio.

"We're thrilled at the news of Bill's invitation," said MSU Golf Coach Ed Bignon. "He's a fine young man and has a great future in golf."

A long driver despite his size (5-7, 160), Spannuth recently rewrote the MSU course record with a nine under par 61. He is defending champ of the MSU Invitational and was medalist in last year's Indiana Amateur.

Spannuth is the first Eagle golfer to win the OVC title and also the first to represent MSU in the NCAA tournament.

"I've been playing well recently and I hope to stay sharp for the NCAA," said Spannuth, a physical education major. Coach Bignon will accompany him to Columbus.



MOREHEAD HONOREES... Morehead State University gave its first honorary degrees at commencement exercises this week. Shown here with President Adron Doran (center) are the four honorees: (l to r) Bert Wellman, Catlettburg, who received the honorary master of education degree; Miss Mary McClafferty, Paintsville, who received the honorary master of teaching degree; James Dewees, Mayfield, who received the honorary master of educational administration degree; and Mrs. Virginia Chapman, Covington, who received the honorary master of education degree.

# 10 Drivers Lose Their Licenses For Violations

The licenses of 10 drivers in the immediate area, including three from Rowan County, have been revoked or suspended, according to the Traffic Safety Coordinating Committee at Frankfort.

They are -

Norman Adkins, 61, Open Fork, Haldeman, suspended to Nov. 10, refusing chemical (breath analyzer, alcohol) test.

Carl Gully, 46, RFD 2, U.S. 60 East, Morehead, revoked to Nov. 16, driving while under influence of alcohol.

Vernon Hayes, 28, P.O. Box 36, Morehead, revoked to Nov. 18, driving while under influence of alcohol.

James Scott Otis, 25, RFD 3, Owingsville, suspended 90 days, speeding.

Earl Thomas Sexton, 21, Box 232, Owingsville, revoked to Nov. 11, driving while under influence of alcohol.

Calvin McCarty, 29, RFD 1, Owingsville, revoked to Oct. 25, driving under influence of alcohol.

Billy Otis Craig, 29, RFD 1, Owingsville, revoked to Oct. 25, driving while under influence of alcohol.

Donald Ray Ward, 19, Grayson, revoked to Nov. 19, driving while under influence of alcohol.

Bishop Aaron Estep, 19, RFD 1, Grayson, revoked to Nov. 9, three convictions for reckless driving within 12 months.

Donald Ray Highfield, 22, RFD 1, Trinity, revoked to Nov. 11, driving while under influence of alcohol.

# Dreaded Armyworm Damage Reported Through Kentucky

Armyworm damage to no-till corn, ranging from moderate to very heavy, has been reported in many Kentucky counties.

Early discovery of infestation is very important if crops are to be saved from serious armyworm damage, according to W. Gregory, UK Extension entomologist. He recommends inspecting crops regularly for armyworms and other insect pests.

Armyworms also like small grains and forage grasses, as well as corn. Gregory warns, so watch out for damage to these crops, too. Other occasional host plants are broad-leaved crops such as alfalfa, sugar beets, and tobacco.

Armyworms can do a lot of damage in a short time. In a large outbreak in Kentucky in 1953, these worms consumed crops and pastures worth about \$10 million on an estimated 1,085,000 acres. Their companion name is "cutworm" because of the habit of the larvae of crawling - marching - in mass to fresh fields when their food supply in one place is exhausted.

What do armyworms look like? The eggs are very small, greenish-white, and shaped like a sphere. The female moth lays eggs in clusters of 25 to more than 100 in the folded blades or under the leaf sheaths of grasses and grains. The young armyworm larvae that hatch from these eggs are pale green in color.

What do armyworms look like? The eggs are very small, greenish-white, and shaped like a sphere. The female moth lays eggs in clusters of 25 to more than 100 in the folded blades or under the leaf sheaths of grasses and grains. The young armyworm larvae that hatch from these eggs are pale green in color.

What do armyworms look like? The eggs are very small, greenish-white, and shaped like a sphere. The female moth lays eggs in clusters of 25 to more than 100 in the folded blades or under the leaf sheaths of grasses and grains. The young armyworm larvae that hatch from these eggs are pale green in color.

What do armyworms look like? The eggs are very small, greenish-white, and shaped like a sphere. The female moth lays eggs in clusters of 25 to more than 100 in the folded blades or under the leaf sheaths of grasses and grains. The young armyworm larvae that hatch from these eggs are pale green in color.

What do armyworms look like? The eggs are very small, greenish-white, and shaped like a sphere. The female moth lays eggs in clusters of 25 to more than 100 in the folded blades or under the leaf sheaths of grasses and grains. The young armyworm larvae that hatch from these eggs are pale green in color.

What do armyworms look like? The eggs are very small, greenish-white, and shaped like a sphere. The female moth lays eggs in clusters of 25 to more than 100 in the folded blades or under the leaf sheaths of grasses and grains. The young armyworm larvae that hatch from these eggs are pale green in color.

What do armyworms look like? The eggs are very small, greenish-white, and shaped like a sphere. The female moth lays eggs in clusters of 25 to more than 100 in the folded blades or under the leaf sheaths of grasses and grains. The young armyworm larvae that hatch from these eggs are pale green in color.

What do armyworms look like? The eggs are very small, greenish-white, and shaped like a sphere. The female moth lays eggs in clusters of 25 to more than 100 in the folded blades or under the leaf sheaths of grasses and grains. The young armyworm larvae that hatch from these eggs are pale green in color.

What do armyworms look like? The eggs are very small, greenish-white, and shaped like a sphere. The female moth lays eggs in clusters of 25 to more than 100 in the folded blades or under the leaf sheaths of grasses and grains. The young armyworm larvae that hatch from these eggs are pale green in color.

What do armyworms look like? The eggs are very small, greenish-white, and shaped like a sphere. The female moth lays eggs in clusters of 25 to more than 100 in the folded blades or under the leaf sheaths of grasses and grains. The young armyworm larvae that hatch from these eggs are pale green in color.

What do armyworms look like? The eggs are very small, greenish-white, and shaped like a sphere. The female moth lays eggs in clusters of 25 to more than 100 in the folded blades or under the leaf sheaths of grasses and grains. The young armyworm larvae that hatch from these eggs are pale green in color.

What do armyworms look like? The eggs are very small, greenish-white, and shaped like a sphere. The female moth lays eggs in clusters of 25 to more than 100 in the folded blades or under the leaf sheaths of grasses and grains. The young armyworm larvae that hatch from these eggs are pale green in color.

What do armyworms look like? The eggs are very small, greenish-white, and shaped like a sphere. The female moth lays eggs in clusters of 25 to more than 100 in the folded blades or under the leaf sheaths of grasses and grains. The young armyworm larvae that hatch from these eggs are pale green in color.

What do armyworms look like? The eggs are very small, greenish-white, and shaped like a sphere. The female moth lays eggs in clusters of 25 to more than 100 in the folded blades or under the leaf sheaths of grasses and grains. The young armyworm larvae that hatch from these eggs are pale green in color.

What do armyworms look like? The eggs are very small, greenish-white, and shaped like a sphere. The female moth lays eggs in clusters of 25 to more than 100 in the folded blades or under the leaf sheaths of grasses and grains. The young armyworm larvae that hatch from these eggs are pale green in color.

# fashion fabrics

Come stitch up a wardrobe of finery for you... for the whole family and save on fashion fabrics featuring the latest news in color, texture excitement. It's all here.

100% Polyester

• All New  
• Just Arrived

# Doubleknit

• 58/60" Wide  
Choose from a wide Assortment of Just Right Colors and Textures

Sew 'n Save at this special price

\$4.95 Per Yard

# SAVE

See Us For All Your...

# SUMMER FABRICS

# Martin's

MAIN STREET

Morehead's Most Modern and Progressive Department Store

MOREHEAD, KY.



All New At Martin's





Thurman Sensing

# Sensing The News

The American citizen, trying to make sense of the turmoil on college and university campuses and in the streets of some cities, understandably finds it hard to fathom what's going on. They read about mobs of protesters converging on the nation's capital and learn of institutions of learning being closed down as students and professors go on strike. The confusion is compounded by the fact that influential television commentators and slick news magazines published in New York City hold up demonstrators as "idealists" and the wave of the future.

The beginning of wisdom concerning the nation's current predicament is understanding that there's nothing idealistic about the protest movement convulsing America.

There's nothing idealistic about U.S. Senators demanding that America cut and run and let the communists turn Southeast Asia into a bloodbath.

There's nothing idealistic about university administrators abandoning their responsibility to parents and the public by allowing radicalized faculties to leave their classrooms and parade in the street.

There's nothing idealistic about militant students - the criminal Left referred to by Vice President Agnew - ransacking college buildings, praising Black Panthers, and setting fires.

There's nothing idealistic about promoting drug addiction and urging the legalization of marijuana, a mind-distorting agent.

There's nothing idealistic about political leaders such as Senators Albert Gore (D-Tenn) and Edward Kennedy (D-Mass) trying to halt America's defense research and development - the key to the security of this nation.

There's nothing idealistic about hippie types who revel in dirt and moral degradation and jump naked into the pool behind the White House.

There's nothing idealistic about talking "peace" when the real intention is defeat of the United States in a deadly cold war struggle with communism.

There's nothing idealistic about shouting "academic freedom" when that freedom is used to shatter young citizens' belief in their country, its constitutional principles and free enterprise system.

There's nothing idealistic about newscasters who slant the news to discredit the President of the United States.

Irrationality is never idealistic. Drug addiction, bombing of ROTC buildings, refusal to serve one's country - none of these things is ever idealistic in any way. Finally, brainwashing of the people by the spreading of false notions is the opposite of idealism. It is utterly cynical.

The genuine idealism of America is vested in our Constitution and in the traditional principles of our national life: faith in God, belief in country and respect for family and in the hearts of the vast majority of Americans. But their beliefs are scorned by effete intellectuals and bitterly attacked by the New Left revolutionaries who want to burn down America.

Ayn Rand, the novelist, recently published a brilliant analysis of the situation facing the nation. Miss Rand said that the New Leftists now disrupting the country "are a desperate herd looking for a Führer." She added that the sundry little dictators who manipulate the radical protesters "do have a mongrel system in mind; a statist dictatorship with communist slogans and fascist policies."

The New Leftists are professional wreckers who hope to plunge the country into total chaos and seize power. The hope of America lies in public understanding, in recognition of the brutal, mindless character of the protest movement. The American people must see that the demonstrators are an army gathered under the banner of irrationality. This army must be defeated by an aroused and resolute people who insist that their elected leaders and responsible officials, including university trustees and administrators, treat the destructionists like the anarchists and the traitors that they are.

The protesters who talk of "peace" while breaking glass windows and lighting torches have no program but destruction and national paralysis. They must be contained, separated and prevented from closing universities and otherwise halting the normal and essential processes of our society. The protesters must not be allowed to delude the people and destroy a great and free republic.

### 13 STATE PARKS TO OFFER OLD FASHION BOX LUNCHES

An old-fashioned box lunch can now be ordered at all 13 state parks.

The moderately priced, packaged lunch was recently added to dining room menus in response to requests from those using boating, camping and picnic facilities, says W. James Host, commissioner of Parks.

Two lunch menus are available: fried chicken with baked beans, cole slaw and rolls, or baked ham on rye with pimiento cheese, potato chips and cake.

### "SHUT-IN DAY" CONTAINED IN GOVERNOR PROCLAMATION

Sunday, June 7, has been proclaimed "Shut-In's Day in Kentucky" by Gov. Louie B. Nunn.

He urged citizens, neighbors and friends to remember those confined to their homes, hospitals or other institutions with visits and small gifts, and to continue the practice throughout the year.

## The 1st Infantry Division To Return Home



**DISTINGUISHED VISITOR**—During President Richard Nixon's 1969 round-the-world trip, the Commander-in-Chief of the Armed Forces took time on July 30 to talk with hundreds of men of the 1st Infantry Division at Ft. An, Republic of Vietnam.



**ALUMNI AWARD WINNER** . . . Lucien Rice, Assistant Director of School Relationships Service for the Boy Scouts of America, was honored Saturday evening by being named the 1970 "Outstanding Alumnus" at Morehead State University. Rice, at the right, is joined by Morehead President Adron Doran and Fola Hayes, Nashville, Tenn., the 1969 award winner. Rice is the son of Mr. and Mrs. W. H. Rice of Morehead.



**ERNE PYLE MEMORIAL**—Buglers of the 7th Infantry Division sound taps following the unveiling of a monument marking the spot where Ernie Pyle met his death. Pyle was killed April 18, 1945 by an enemy bullet on the island of Ie Shima, just off Okinawa. The monument was dedicated in July 1945.

## Help Now, Save Later



IMPRESS THEM NOW

NOT ARREST THEM LATER

★★★★★★

This is a lot less expensive . . .

than this!



Help the Kentucky State Police to help an underprivileged boy attend camp this summer. Aimed at reaching the boy in whom disregard for law and order and fear of policemen has not yet taken a firm hold, Trooper Island operates solely on contributions—and without any state or federal funds. Your contribution now will help to make this year's encampment at Dale Hollow Reservoir a success for nearly 500 boys.

**TO: TROOPER ISLAND, INC.**  
 Kentucky State Police  
 State Office Building  
 Frankfort, Kentucky 40601

Enclosed please find my contribution in the amount of \$ \_\_\_\_\_ for Trooper Island's 1970 summer encampment.

(Name) \_\_\_\_\_

(Address) \_\_\_\_\_

**STOP LOOKING!**

Your Search Has Ended!

We Have Great Buys . . .

See for Yourself

The year of the great Pontiac Break Away

Give humdrum driving the heave ho with a new wide-track Pontiac

New Automobiles By . . . Pontiac and Buick

Truck Headquarters

1970 Pontiac Reflect Grand Prix Influence

Stone Pontiac - Buick - GMC, Inc.

U.S. 60 East **Cars Shown By Appointment** Morehead, Ky.







# MSU Classes May Resume In August

Under study is plan by which Morehead State University would -

- + Open its fall term almost a month earlier than in the past.
- + Take almost a month off during Christmas and New Year.
- + End the first semester before Christmas.
- + Finish the second semester in mid-May.

Nobody has anything official to say from the "policy level" at the University, but it is an "open secret" that this schedule has been submitted "for consideration" -

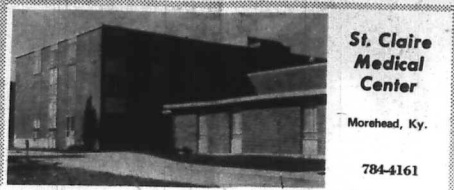
Aug. 19 - Post summer ends.  
Aug. 24, 25, 26 - 1st semester begins

registration.

Aug. 27 - 1st semester classes begin.  
Nov. 26, 27, 28, 29 - Thanksgiving Holiday.  
Dec. 19 - 1st semester ends.  
Dec. 20 - Jan. 10 - Semester break.  
Jan. 11, 12, 13, 1971 - 2nd Semester registration begins.

Jan. 14 - 2nd Semester Classes begin.  
May 14, 15 - Summer school registration.  
June 16 - Summer school begins.  
Aug. 7 - Summer school ends.  
Aug. 19, 23 - 1st semester registration begins.

It is understood that Eastern, Western and Murray Universities are considering class schedules much like the foregoing. Final decision at Morehead rests with President Adron Doran and the Board of Regents.



**St. Claire Medical Center**

Morehead, Ky.  
784-4161

**ADMISSIONS**

May 27 - Nathan Valandingham, Olive Hill; Rosemary Hamilton, Morehead; Gertrude Bobbitt, Morehead; Tina James, Olive Hill; Beverley Chapman, Morehead; Johnny Hamm, Clearfield.

May 28 - Timothy Ray Chapman, Morehead; Helen Jeanette Salyers, Sandy Hook; Inez Donovan, West Liberty; Sally D. Stone, Olive Hill; Lilburn Everett Sparks, Olive Hill.

May 29 - Loveda Logan, Mary Eva Blair,

Willie B. Gregory.  
May 30 - Clarence Whitt, Wendell Dickerson, Gracie DeHart, Robert Hayslett.  
May 31 - James Boyd McClurg, Morehead; Marlin Elwood Jones, Shilo, Ohio; Jeffrey Allen Brown, Mansfield, Ohio.

June 1 - Sebbly R. Johnson, Morehead; Donna Jean Davis, Morehead; Allie J. Black, Sr., Morehead; Madge Lunsford, Olive Hill; Pearl Jane Skaggs, Hillsboro; Alberta Hutchinson, West Liberty; May Wagoner, Newfoundland; Tullman Flannery, Bruin.

June 2 - Lorene Blankensbecker, Stark; Courtney Rainey, Korea, Ky.; Michael Babb, Morehead; Willie Frank Thomas, Morehead; James W. Holbrook, Olive Hill.

**DISMISSALS**

May 27 - Delphia Brickey, Madge Lunsford, Carl Greenhill, Charles Howard, Gregory Duncan.

May 28 - Bergie Bonley, Jana Jones, Verle Furnish, Nannie Wagoner, Helen Barker, Beverley Chapman.

May 29 - Dewey Burke, Clo Adams, Catherine Ward, Pearl Messer, Grace Sparks, Rosemary Hamilton, Timothy Chapman, Minnie Scaggs.

May 30 - Virgil Henderson, Willie B. Gregory.

May 31 - Norman Sparks, Emerson Collier, Robert Hayslett, Sally Stone and baby, Eva Porter, Gertrude Bobbitt.

June 1 - Helen Salyers and baby, Loveda Logan, Gracie DeHart and baby, Aaron Stewart.

June 2 - Clarence Whitt, Wendell Dickerson, May Eva Blair, Ephriam Pyffe, James Boyd, Kerrie Allen, Marlin Jones, Jack Roberts.

**BIRTHS**

May 28 - Mr. and Mrs. Lirny Stone, son; Mr. and Mrs. Larry W. Salyers, son.

May 31 - Mr. and Mrs. Thomas DeHart, son.

June 2 - Mr. and Mrs. Herbert Lee Blankensbecker, daughter.

**ASHLAND YOUTH AWARD R.O.T.C. SCHOLARSHIP**

Richard P. Wilson, a senior at Paul G. Blazer High School, Ashland, has been awarded a four-year Army ROTC scholarship to Morehead State University. He is the son of Mr. and Mrs. Donald D. Wilson, 2716 Herman Ave., Ashland, and is a cadet captain in high school ROTC.

**Week's Schedule**

Open To Public At Morehead State University

Thurs., June 4 - Final examinations.  
Fri., June 5 - University Breckinridge School graduation - Breckinridge Auditorium, 7:30 p.m.  
Sat., June 6 - Semester ends.

**STEVE HAMILTON TO BE ON T-V SHOW MONDAY NIGHT**

Two New York Yankee pitchers, including one from Morehead, will appear on the late nationally televised Dick Cavett Show next Monday (June 8). They are Mel Stottlemyer, and Steve Hamilton, Morehead. Their appearance on the show is scheduled at 11:30 Monday night.



**SUN WORSHIPPER** - Lana Hart, took a break from classes to work on her tan at the University Lake at Morehead. She attracted appreciative whistles.

**STATE POLICE CAMPS WILL BE OPEN TO BOYS JUNE 14**

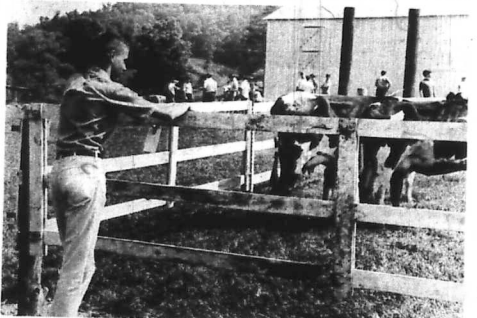
Kentucky State Police will initiate the 1970 series of week-long camping trips for needy boys at Trooper Island, Dale Hollow Reservoir, June 14.

The first contingent will consist of some 40 boys, ages 11 to 14, from Kentucky's 14 westernmost counties.

The counties: Fulton, Hickman, Carlisle, Ballard, Christian, McCracken, Graves, Livingston, Marshall, Muhlenberg, Lyon, Trigg, Hopkins and Todd.



**SUNNY DISPOSITIONS** - College life isn't all books and classes as these Morehead State University coeds will attest. They took a break for sunbathing at the University Lake. - Photo by Donn Rooks.

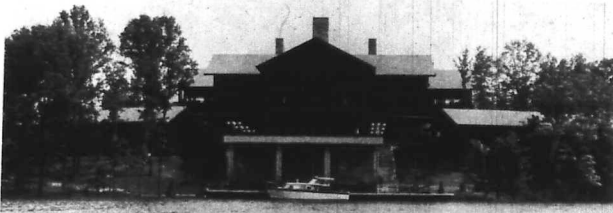


**VISIT MOREHEAD STATE'S FARM** - Clinton Curtis, a member of the Future Farmers of America chapter at Rowan County High School, inspects livestock during the recent FFA Field Day at the Morehead State University Experimental Farm.



**HONOR DR. CARTMELL** - Dr. W.H. Cartmell, prominent Maysville surgeon was honored Saturday night by the Morehead State University Alumni Association by receiving its "Public Service Award" for his dedication to the people of the region. He is shown here receiving the award from the 1969 winner - William Layne, mayor of Morehead. Dr. Cartmell has served on the Morehead Board since 1956, longer than any person in the university's history.

## Kentucky's Newest Resort Park Lodge.



**LAKE BARKLEY'S LARGE NEW LODGE**  
... a great place to greet the day



**COMMISSIONER HARPER & HOSTESS KAREN WINFREE**  
... welcome swimmers, newswomen

(Ray Krause Photos)



**PARKS COMMISSIONER W. JAMES HOST**  
... spoke at evening session

## What Are You Looking For In A New Tire?



**Is It . . .**

- |  |                         |
|--|-------------------------|
| 1. Extra safety with 4 plies of Polyester Cord and 2 Glass Belts | 6. Open-groove traction |
| 2. Wider Tread   | 7. Premium tread depth  |
| 3. 3-ring sidewall   | 8. Longer tread wear    |
| 4. Greater stability   | 9. Improved gas mileage |
| 5. Increased puncture protection                                 | 10. Velvet smooth ride. |

The All New Multi-Mile (4+2) Has It!!



Available in Morehead only at . . .

## Morehead Tire Supply

116 Branham Ave. - Behind Maloney's - Phone 784-4556 - Morehead, Ky.

A Complete Line of New Batteries Now Available

ARVEL CAUDILL, Owner



## Announcing the New Portrait BankAmericard.

It proves you are you.  
We put your picture on it, in full color. So, it's better than any ordinary credit card. There is never any doubt that you and your card belong to each other.  
If it's lost or stolen, no one else can use it to run up a big bill. And when you cash a check where people don't know you, it's positive identification. It also proves all the other cards you carry really belong to you.  
Come in and pose for your look alike BankAmericard today.



Available in Morehead, Ky. At the Citizens Bank - thru June 30



Your Morehead and Area BankAmericard Bank  
Service marks owned by BankAmericard Service Corporation





# Greenup Celebrates its Mountain Heritage



Folk music lovers thronged to the Greenup County Fairgrounds over the weekend for the first Mountain Heritage Folk Festival, which its sponsors expect to become an annual event. They heard authentic mountain music by Appalachian performers.

WALTER PAUL, SAM BITTMAN DO THEIR HIT ON STAGE AS GIRL PERFORMER AWAITS TURN



An unidentified girl, left, steps her way along the top of a fence railing toward one of the music workshops, Bill Williams of Greenup, at right, is 71 years old but he had every youngster in the crowd "wailing". Bleacher seats were available but many spectators, below, sat on rugs and blankets on grass near the stage.

Photos by B. B. Culbertson  
Louisville Courier Journal



## Tribal spears still used in an age of technology

By M. G. SRINATH  
NEW DELHI (UPI)—In an age of moon-walking and computers, the spear of the tribesman would seem obsolete.

But it is still forged, used, and cherished by tribesmen in India for its glint of well-shaped steel, balance of shaft and decoration of dyed goat hair.

To 400,000 Naga tribesmen in northeastern India, bordering China, the spear is man's best friend. It not only protects them against enemies but is used to hunt food.

Fifty spears made by master craftsmen Thimochalle Angami, 63, were displayed in New Delhi.

The Nagas are made up of 16 tribes, with Angami, Ao and Sema in the majority.

Each tribe has varied customs, dialects, costumes, arts and its

own techniques and styles of making spears. The Angami spear has red, blue, yellow goat hair trimming while the Ao decoration is red.

What's needed  
Spear makers need good wood, steel and goat hair.

The wood is taken from the thobo, a hardwood tree plentiful in the region. It is cut, pruned and gauged for making balanced shafts. Then it is dried in the sun for three days for conditioning. With the help of a dao, an axe-like implement, the shaft is cut.

The Angami spear is seven feet long. The Sema spear is nearly nine feet. Goat hair is carefully trimmed and dyed, forms the decoration above and below the point of balance.

For dyeing, the hair is soaked for a day in watery extracts of locally made vegetable dyes. Then it is dried in the shade. Each hair is fixed to the shaft with thread. A broad, double-edged spear head is attached to the decorated shaft at the top and a spike at the other end.

It takes about three days to make a spear. There are three or four spearmakers in every tribe.



Policyholder Questions Answered by the Health Insurance Institute, 277 Park Ave. N. Y. N. Y.

Q. A thesis I'm writing on health insurance calls for the most recent information available. I'd like to know about such fundamentals as the number of persons covered, benefits and types of health insurance coverage. What are the facts?

A. In 1968, the most recent year for which final figures are available, about 169 million Americans were covered by some form of private health insurance. This represents 85 per cent of the civilian population.

As you may know, the government's Medicare program for persons 65 and over is completing its fourth year. What you may not know is that more than 10 million persons, 53 per cent of the total population age 65 and over, still hold private health insurance policies that supplement the Federal program. A breakdown of private health insurance by type of coverage and numbers of persons covered at the end of 1968 includes hospital expense (169 million), surgical expense (156 million), regular medical expense (129 million), major medical (97 million), and disability income (58 million). Many people carry more than one type.

More than \$12 billion in health insurance benefits were paid by private insuring organizations in 1968, two and one-half times the amount in 1967. These benefits were provided by private insurance through both "indemnity" (insurance company) payments or "service" (Blue Cross or Blue Shield) arrangements. The greatest amount of benefits went toward hospital expenses (\$7 billion). Others included surgical and medical expenses (\$3.8 billion) and disability income (\$1.4 billion).

There also were 3.1 million persons with some sort of dental insurance coverage in 1968, with total benefits amounting to almost \$54 million.

In 1968, Americans spent 2.5 per cent of their disposable income for health insurance, compared to under 2 per cent 10 years earlier.



## Break loose from summer confinement with a second electric room air conditioner!

Nothing brings on too much family togetherness like soaring temperatures and one electric room air conditioner. Break up the crowd by opening new comfort areas in your home with a second unit. It's a sure way to keep tempers and temperatures cooler as the season wears on.

See your dealer today for that second electric room air conditioner—the one that can end your summer confinement in minutes.

Ask also about models that double their usefulness with a special heating element for taking off spring and fall chill.



**KENTUCKY UTILITIES COMPANY**  
Six rate reductions since 1962



COPPERBELT . . . Miners at Brawley, Zambia, use a massive diamond drill on the face of one of the world's richest copper deposits.

# A deal to believe in. From a dealer to believe in.



If it takes value to make you believe in a car, believe in the new Buick Skylark. Every Buick is crafted with integrity. And filled with value.

You get things like a cooling system that should never overheat, even with air conditioning. You get an automobile so well built

that its drive train and chassis are literally tuned to the hilt—tuned to the standards of equipment. So that they'll last even longer and provide even greater traction. One other point. Value also has to do

with the man who sells and services the car you buy. Good service can help you maintain the value of your new car. Check the good deals your Buick dealer is offering right now on the Buick of your choice. If you're looking for something to believe in, you'll find it there. After all, wouldn't you really rather have a Buick?

**Buick Value/Buick Dealers.**  
Something to believe in.



Special notice: Prices of all 1970 Opels have been reduced at your Buick-Opel Dealer with no change in features or equipment.

## THE LOAN FOR PEOPLE WHO DON'T NEED LOANS.

It's easy to "borrow" with revolving charge accounts, credit cards, and by financing purchases . . . but a good loan may save money.



No matter how you buy, if repayments are in monthly installments there will normally be a finance or "carrying" charge. And, while revolving charges and credit cards are an easy way to buy, they aren't always the lowest cost way to finance the purchase.

Truth in Lending requires a full disclosure of all rates and charges—to help you compare the costs.

We suggest you do it. Here's what our Interest-Saver Loan costs:

| Loan Amount     | Finance Charge | Annual Percentage Rate | Monthly Payment |
|-----------------|----------------|------------------------|-----------------|
| 12 mos. \$2,000 | \$40.00        | 11.28%                 | \$180.70        |
| 24 mos. 2,000   | 40.00          | 11.28%                 | 96.29           |
| 36 mos. 2,000   | 40.00          | 11.28%                 | 69.62           |

If you're paying more, get a loan from us and save the difference. It can be well worth the small amount of trouble.

Figure it out. All the information you need is given on our monthly statements and finance contracts. Or, give us a call and we'll help you with the figuring.

It's not what you own . . . it's who you own.  
**Commercial Credit\* Interest-Saver Loan**

149 E. First Street • Phone: 784-7831

Credit Life and Disability Insurance Available to Eligible Borrowers

\* Commercial Credit Plan of Merchand, Incorporated



LOOK AGAIN . . . Bonnie Georgiadic, choreographer and producer of Florida's Weeki Wachee under and through up again by the mermaid twins, Dolly, left, and Holly Harris, says Bonnie, "telling them apart on dry land is problem enough. Under water, it's murder."

## Traveling is fun



with a road atlas from Jerry's

Eating is fun when there's Jerry's on the map. So next time you're in the neighborhood drive-in and pick up some fun. Good food from Jerry's. And a 96-page Rand McNally road atlas, complete with tour guide of U. S., Canada, and Mexico. Only 49¢ at Jerry's.



**U.S. Highway 60**

Offer Good Through June 19, 1970



This Is What The...

Morehead Jaycees

... Are Doing

The Annual Awards Banquet for the Morehead Jaycees was held last week and Jack Thompson, past president of the local chapter, received the coveted Outstanding Jaycee Award...

certificated. Other Jaycees honored were spike award winners: Dr. Don Blair, Mike Carr, Gary Levanham, Joe Pierce, and Dwight Smith...

Doran Honored, Applauded For Handling Big Problem

Morehead State University President Adron Doran has been commended by MSU alumni for developing lines of communication which prevented needless and tragic campus violence...

of our country, and man's pollution of his environs. We are also aware that many campus disorders have occurred as the result of the failure of the various elements of our campus communities to establish effective communications channels...

Rabies Educational Campaign Opened Throughout State

The State Health Department and the Kentucky Assn. of Dog Clubs announced a joint statewide rabies educational campaign. The announcement was made by Dr. Joseph W. Skaggs, director of the Health Department's communicable disease office...

COMMISSIONER MILLER on Kentucky Agriculture

Harvest of Kentucky's namesake crop, "Blue Grass," is now underway, and an excellent yield is expected. Last week's Blue Grass Field Day on the W.J. Walden farm in Woodford County...

One Man's Opinion...

Stir In Owingsville

About 125 miles east from Louisville will bring you to the town of Owingsville, Kentucky. It was named in the last century for a man who earned the honor, by building what a jary of his contemporaries considered the finest house to, and the home still stands...

Area Development District, operating as a non-profit corporation under Schneider's leadership, making painstaking plans to see to it that local people will get the primary jobs and pleasure that should ensue...

'Male' Pill Is Unsatisfactory In Controlling Births

It is unlikely that methods of systemic fertility control currently under investigation with laboratory animals can be modified to provide a suitable human male contraceptive in the near future...

C.E. Bishop Drug Company advertisement featuring Vitamins and Cosmetics, with an illustration of a person and a dog.



NEW THRUST-George Perkins, commissioner of Child Welfare, called for researchers and staff workers to redirect the thrust of their efforts toward the entire community...



Mrs. Rosa Thomas, EXECUTOR FOR THE ESTATE

Estate Auction advertisement for Saturday June 6, 2:30 P.M., located at 1 1/2 miles south of Midland, Ky.

Pack's, Inc. advertisement for 3/8" SHEETROCK and PANELING, with prices and contact information.

Pack's, Inc. advertisement for various home products including DuPont 501 Nylon Carpet, Ceiling Tile, and Bathroom Paneling.

Litter drive advertisement for THE VIRGINIAN OUTDOOR THEATRE, featuring movies like 'The Mod Room' and 'The Bridge at Remagen'.

Advertisement for 'A New Kind of Lovestory' and other entertainment options, including a restaurant and a movie.





**Prof nixes vacations for students**

CANYON, TEX. (UPI) - Summer vacation for most high school students is a wasted time, according to a West Texas State University professor. Dr. Fred Stoker, head of the Department of Educational Administration at West Texas State, said a study he made showed many students unhappy with present summer activities. "I believe they are bored with a three-month vacation, from June until September, as the public school system is now set up," Stoker said. "Our schools should take another look at the vacation period. To combat boredom and provide worthwhile experiences, more students could be involved in volunteer service oriented activities." The University professor also said schools should provide more summer activities in addition to remedial classes and, he said, colleges should waive some antiquated admission requirements and permit superior high school students to take college credit courses in the summer.

"The vacation originally was set up to permit students to work on farms," Stoker said. "In a predominantly agricultural area such as the Texas Panhandle, only 20 per cent of the students now work on farms." Stoker said large groups of students wanted summer employment but were unable to find it. He said girls have a harder time than boys often find nothing except baby sitting at low wages. The survey shows that students who work during the summer months are generally happier than those who do not," Stoker said. "Less than six per cent of the students sampled believe the money earned in summer employment is essential to continue their education."

Canned tuna in vegetable oil makes a tempting main dish. Heat 3 tablespoons of shortening in large skillet. Add 1 (pound) package of frozen shredded potatoes for hash browns. Cook, covered, about five minutes. Place 3 tablespoons of flour in a small bowl; stir in 1 1/2 cups of milk, 2 tablespoons of chopped pimiento, 1 1/2 teaspoons of salt and 1 tablespoon of dried onion flakes. Stir into potatoes. Add 2 (6 1/2 or 7-ounce) cans of tuna in vegetable oil. Cook uncovered, stirring occasionally, until sauce is thickened, about five minutes. Gently stir in 2 cups of cooked green vegetables—lima beans, green beans, or peas—and heat to serving temperature. Makes 4 to 6 servings.

Now it's the computer put to work to keep ladies from getting six coffee pots, four silver trays, three electric irons—and the like. Scientific Resources Corp., of Philadelphia, is introducing a computer which stores, gift shops, et al., can use as a bridal registry that'll eliminate duplication of gifts.

**Termite Trouble?**

See or Call  
**CHESTER KISER CONSTRUCTION CO.**  
Phone 784-5109 & 784-6442  
Agents for  
**OLD RELIABLE CONTROL and CHEMICAL CO., INC.**

**Any taxi that toots its own horn**

**USDA CHOICE ROUND or RIB STEAKS** **95¢ lb.**

**USDA CHOICE SIRLOIN STEAKS** **\$1.09 lb.**

**USDA CHOICE T-BONE STEAKS** **\$1.29 lb.**





**U.S. Choice Chuck Steak** .... **79¢ lb.**

**5th, 6th, 7th Rib Rib Roast** ..... **79¢ lb.**

**Boneless Rotisserie or Rump Roast** .... **99¢ lb.**

**Eckrich Slender Slices** ... **3 3oz. pgs. \$1**

**Lohrey SEMI-BONELESS HAMS** **69¢ lb.**

**Webbers Fresh Sausage** 2-lb. roll **\$1.39**

**Smoked Whole or Half Slab Bacon** ..... **59¢ lb.**

**Marhofer's Canned Ham** ... 5-lb. can **\$4.49**

**Eckrich Smoked Sausage** ... **89¢ lb.**

**U.S. CHOICE CHUCK ROAST** ..... **59¢ lb.**

**Webber's Premium Wieners** ... 12 oz. pkg. **59¢**

**Miami Valley Premium Bacon** ... 1-lb. pkg. **83¢**

**Stock-up Today PEPSI COLA** ..... **8¢**

16 oz. bottle plus deposit

**Kraft Dusseldorf, Horseradish Salad Mustard** ... 6 oz. **10¢**

**Kraft Plain or Smoked Bar-B-Q Sauce** ... 18 oz. **39¢**

**Kraft Jet Puffed Marshmallows** ... 1 lb. pkg. **25¢**

**Frank's Minced Onion** ... 3 1/4 oz. **39¢**

**Elf Assorted Canned Pop** ..... **10¢**

12 oz. cans

**Personal Size Ivory Soap** ..... **8¢**

**Hawaiian Red Punch** ... 3 46 oz. cans **\$1**

**Van Camp's Pork and Beans** ... 5 20 oz. cans **\$1**

**Super Valu Vegetables** ... 5 cans **\$1**

Corn - Beans - Peas

**Super Valu Frosting and CAKE MIXES** **25¢ pkg.**



**Grade "A" Large Eggs** ... doz. **39¢**

**VENDOR COUPON**

**Spic & Span** 54 oz. box **75¢**

with this coupon Redeem at Super Valu Void After June 10, 1970

**VENDOR COUPON**

**Ajax Detergent** 44 oz. box **59¢**

with this coupon Redeem at Super Valu Void After June 10, 1970

**VENDOR COUPON**

**Dawny Fabric Softener** 64 oz. **\$1.09**

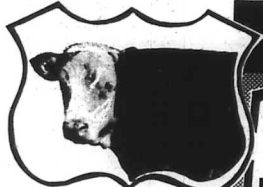
with this coupon Redeem at Super Valu Void After June 10, 1970

**VENDOR COUPON**

**Candy Orange Slices** 15 oz. pkg. **10¢**

with this coupon Redeem at Super Valu Void After June 10, 1970

**BABY BEEF SALE**

**SAVEWAY SUPER VALU**



...the friendly folks!

**Grade "A" JENNIE-O TURKEYS**

**4 to 9 lbs. 49¢ lb.**

**SPAM** **49¢**

**HORMEL LUNCHEON MEAT**

12 oz. can

**SPAM** **79¢**

All Vegetable Crisco ..... 3 lb. can

**VELVEETA** **89¢**

2 lb. loaf

**Miracle Margarine** ... 3 1 lb. pks. **\$1**

**Philadelphia Cream Cheese** ... 8 oz. pkg. **32¢**

**Land-O-Lakes Grade "A" Butter** .... **79¢ lb.**

**BANQUET FROZEN POT PIES** **15¢**

each

• Chicken • Turkey • Beef

**Shrimp** ..... 1-lb. **\$1.49**

**Morton Cream Pies** ... 4 for **\$1**

Cocoruit - Chocolate - Lemon - Banana

**Flav-o-rite or Old South ORANGE JUICE**

6 oz. can **19¢** 12 oz. can **36¢**

We Reserve  
The Right To  
Limit All  
Quantities

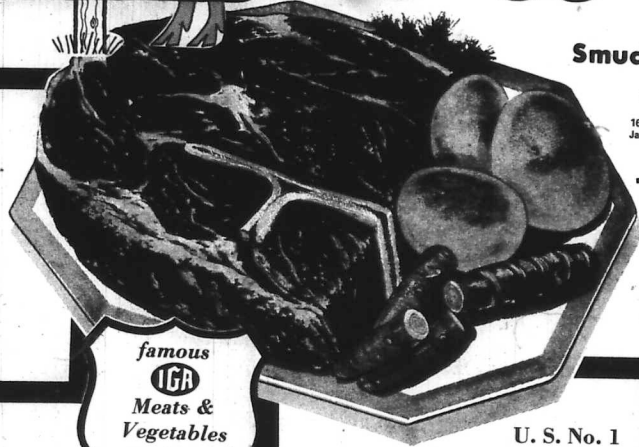
Minimum  
Purchase  
May Be  
Required



TableRite  
Assorted  
Flavors  
**Ice Cream**  
1/2-gal. Ctn.  
**58c**

TableRite  
Smooth,  
Melting  
**Cheese Spread**  
2-lb. Pkg.  
**88c**

TableRite  
Roll  
Creamery  
**Butter**  
Pure, Golden  
1-lb. Roll  
**69c**



TableRite  
Chuck Steaks . . . lb. **65c**  
Webber's Hot or Mild  
Whole Hog Sausage 2-lb. Roll **\$1.45**  
Sliced Bologna . . . 8-oz. Pkg. **49c**  
Pickle & Pimento loaf 8-oz. Pkg. **49c**

U. S. No. 1  
**White Potatoes**  
10-lb. Bag  
**59c**

Smucker's Pickles  
Sweet Dill Stix  
Sweet Mix, Sweet Chips,  
16-oz. Jar  
**49c**

Hawaiian  
Punch  
Orange, Juicy  
Red, Pineapple, or  
Apple Red  
46-oz. Can  
**35c**

Radishes  
Red Button  
8-oz. Pkg.  
**10c**

Onions  
Fresh, Green,  
Bunch  
**10c**

Carrots  
Crisp,  
16-oz. Cello  
**10c**



THE FLAGS of Spain, France, Britain, and the Confederacy have left impressions on Georgia's history. At Six Flags Over Georgia, they fly alongside the modern banners of the State of Georgia and the United States, symbolizing the blend of past and present adventure offered by the family entertainment park.

Newest paper tickles ribs

CONCORD, CALIF. (UPI)—A group of second and third grade school reporters and editors, helped by several high school typists, are putting out the "Patriot Jr." — a five-page school newspaper.

Several months ago Larry Terherst, editor of the Concord High School "Patriot," talked to the children in Mrs. Nola Fagg's second-third grade class. The youngsters afterwards decided to publish a "Patriot Jr." and set about getting stories.

The paper has stories like this one headlined "Mrs. Bishop's Baby."  
"Mrs. Bishop is expecting a baby in July. It is going to be her first child. She is going to take a leave of absence in a few weeks. If it is a boy her husband would like its name to be Robert Stephen Bishop."  
"She has been a nice teacher. She was a good teacher too. My little brother is in her class."

For a man-in-the-street story, the young editors asked their friends what happiness is. The answers varied from "Happiness is having a big bicycle" to "Happiness is doing science 24 hours a day. That is what I like to do. I like electricity too."

The "Patriot Jr." staff handles everything except the typing. It plans to keep up the publishing venture.



ALL 2187'S CLUBS WERE SET UP FOR THE PAPER.

WOLFORD INSURANCE AGENCY  
See Us for All Your Insurance Needs  
PHONE 784-4494  
151 EAST MAIN

TERMITES?  
call Terminix!  
\$25000 GUARANTEE

FREE ESTIMATES  
For information call:  
Carr Lumber Co.  
West Union Morehead  
PHONE 784-5438  
All work done by  
TERMINIX CO., INC.  
1024 New Circle Rd.  
Lexington, Ky.

Southern Star  
Thin Sliced  
**Bacon**  
1-lb. Vac-Pak  
**89c**  
TableRite  
**Ground Chuck**  
lb.  
**89c**

TableRite  
**Chuck Roast**  
lb.  
Blade Cut  
**49c**



IGA Deluxe  
**Cake Mixes**  
19-oz. Pkg.  
13-oz. Frosting Mixes . . . 19c  
**19c**



Your Choice Stokely  
**Fruit Cocktail,**  
Cling Peaches,  
Bartlett Pears  
303 Can  
**19c**



IGA Frozen  
**Orange Juice**  
6-oz. Can  
**15c**



IGA Sliced  
**Strawberries**  
10-oz. Pkg.  
**29c**



Green Giant  
**Vegetables**  
Mixed Vegetables,  
Niblets Corn, Sweet  
Peas, Green Beans  
10-oz. Pkg.  
**29c**

**Pepsi Cola**  
16-oz. 6-Pak  
**53c**

IGA Deluxe  
All Grinds  
**Coffee**  
1-lb. Can  
Limit 1 With \$5 Order  
**43c**

TableTreat  
White  
**Enriched Bread**  
1-lb. Loaf  
**6 for \$1**

TableTreat  
**Enriched Bread** . . . 20-oz. Loaf **5 for \$1**  
TableTreat  
**Jelly Roll** . . . 12-oz. Pkg. **49c**

Hungry Jack  
**Buttermilk Biscuits**  
TableRite American  
8-oz. Tube **10c**  
**Cheese Slices** . . . 12-oz. Pkg. **59c**  
**Cheese Slices** . . . 8-oz. Pkg. **49c**  
Mozzarella, Colby,  
Kraft Natural Sharp Cheddar

Maxwell House  
Reg. Drip, Electric Perk  
**Coffee**  
1-lb. Can  
Limit 1 With \$5 Order  
**48c**

50% off label  
**Tide XK**  
\$1.98  
3-lb., 11-oz. Family Size

TableRite Colby  
**Longhorn Cheese**  
Blue Bonnet 2c off label  
8-oz. Tube **10c**  
**Margarine** . . . 1-lb. Ctn. **28c**  
TableRite U.S.D.A. Grade "A"  
10-oz. Half Moon **49c**

**Large Eggs** . . . 12's Pkg. **39c**  
Milk Bars, Twin Pops, & Fudge Bars . . . 12's Pkg. **59c**

Ice Cream Sandwiches, Heath Ice Cream Bars, 6's & Drumsticks Pkg. **59c**  
**Toffee Bars** . . . 6's Pkg. **59c**  
**Chocolate Drink** . . . 14-oz. Jar **45c**

**Health & Beauty**

Noxema  
**Skin Cream** . . . 4-oz. Jar **63c**  
Normal, Dry, Oily  
**Breck Shampoo** . . . 8-oz. Bot. **73c**  
Gillette Platinum Plus  
**Razor Blades** . . . 6's Pak **69c**

**IGA Values**

IGA Special Blend  
**Ice Tea** . . . 8-oz. Jar **59c**  
Row's  
**Dog Meal** . . . 50-lb. \$3.98 Bag **\$1.98**  
Blue Ribbon  
**Facial Tissue** . . . 200-ct. Pkg. **19c**  
Blue Ribbon  
**Bathroom Tissue** . . . 3c off label 4-roll Pak **36c**  
Dal Monte  
**Green Beans** . . . 303 Can **25c**

IGA STORE COUPON  
Gold Medal  
**Flour**  
Plain or Self-Rising  
5-lb. Bag **39c** Without Coupon **54c**  
With Coupon  
Only One Coupon Per Unit Purchased  
15c Good Only At IGA Thru June 10 15c

Lanolin Plus  
**Hair Spray**  
13-oz. Can **49c**

Martha  
**White Flour**  
25-lb. Bag **\$1.98**

Del Monte  
**Golden Corn**  
303 Can **22c**

Del Monte  
**Sweet Peas**  
303 Can **22c**

Smucker's  
**Sweet Relish**  
16-oz. Jar **39c**

Smucker's  
**Preserves**  
Peach or Seedless Blackberry  
12-oz. Jar **36c**

Thrill  
LIQUID DETERGENT  
13c off label  
22-oz. Bot. **44c**

