



How do land use and land cover changes after farmland abandonment affect soil properties and soil nutrients in Mediterranean mountain agroecosystems?

Estela Nadal-Romero^{a,*}, Makki Khorchani^{a,b}, Leticia Gaspar^c, José Arnáez^d, Erik Cammeraat^e, Ana Navas^c, Teodoro Lasanta^a

^a Instituto Pirenaico de Ecología, IPE-CSIC, 50059 Zaragoza, Spain

^b School of Natural Resources University of Nebraska Lincoln, USA

^c Estación Experimental Aula Dei (EEAD, CSIC), Campus de Aula Dei, Avda. Montañana, 177, 50080 Zaragoza, Spain

^d University of La Rioja, DCH, Physical Geography, Logroño, Spain

^e Institute for Biodiversity and Ecosystem Dynamics (IBED), Universiteit van Amsterdam, 1098XH Amsterdam, the Netherlands

ARTICLE INFO

Keywords:

Farmland abandonment
Afforestation
Natural revegetation
Mediterranean mountains
Soil organic carbon

ABSTRACT

Mediterranean mountains are sensitive agroecosystems that have suffered intense land use and land cover changes (LULCC) during the last century. From the middle of the twentieth century, most of the cultivated lands in Mediterranean mountains were abandoned, allowing the recovery of vegetation (through natural revegetation and afforestation programmes). To examine the effects of farmland abandonment, secondary succession (natural revegetation) and afforestation, an intensive soil sampling was carried out in the Araguás catchment (Central Spanish Pyrenees) including sparsely vegetated areas (badlands), grasslands, shrublands and afforested sites. LULCC were mapped, and soil physico-chemical properties were analysed in reference sites (unaltered areas during the last centuries) and in the different land uses. Likewise, the soil organic carbon (SOC) content in the bulk soils and in the fractions separated by density fractionation have been studied. This study evidenced that farmland abandonment led to a mosaic landscape with different land use and land covers. Results show that LULCC significantly affect soil physico-chemical properties (soil texture, stoniness, pH, SOC, total carbon, CorgN ratio, bulk density and field capacity). Significant differences were observed between secondary and afforested sites following farmland abandonment. Afforestation triggered higher SOC than shrubland sites (natural revegetation) (1.4 and 1.1% respectively), suggesting a slower process of organic matter accumulation after farmland abandonment in the natural revegetation compared to afforestation. The significant role of grassland sites for enhancing the accumulation of SOC has been also confirmed. The results showed also significant differences in the relative contribution of each organic fraction to the bulk SOC: the amount of labile fraction (free and occluded labile fractions) is significantly higher in afforested and shrubland sites (58.1 and 51.2% respectively) than in grassland sites (36.8%). Understanding the effects of LULCC on soil properties and SOC dynamics is essential when planning post-land management practices after farmland abandonment.

1. Introduction

Land use and land cover changes (LULCC) often occur in agroecosystems (Varela et al., 2020; Padial-Iglesias et al., 2022). In the Mediterranean region, farmland abandonment and revegetation processes are one of the most important ones, with wide-reaching socio-economic and environmental consequences. The increase in biodiversity

(San Román-Sanz et al., 2013; García-Llamas et al., 2019), the reduction of soil erosion (García-Ruiz and Lana-Renault, 2011), and greater soil organic carbon stocks (Bell et al., 2021; Lasanta et al., 2021) are among the main positive impacts of farmland abandonment. However, the negative impacts include the increase of fire risk (Oliveira et al., 2014), landscape homogenization (Jongman, 2002), and the decrease of water resources (López-Moreno et al., 2011) among others.

* Corresponding author.

E-mail addresses: estelanr@ipe.csic.es (E. Nadal-Romero), mkhorchani2@unl.edu (M. Khorchani), lgaspar@eead.csic.es (L. Gaspar), jose.arnaez@unirioja.es (J. Arnáez), L.H.Cammeraat@uva.nl (E. Cammeraat), anavas@eead.csic.es (A. Navas), fm@ipe.csic.es (T. Lasanta).

<https://doi.org/10.1016/j.catena.2023.107062>

Received 16 July 2022; Received in revised form 18 January 2023; Accepted 3 March 2023

Available online 17 March 2023

0341-8162/© 2023 The Author(s). Published by Elsevier B.V. This is an open access article under the CC BY-NC-ND license (<http://creativecommons.org/licenses/by-nc-nd/4.0/>).

Farmland abandonment is a worldwide process that is also affecting traditional livelihoods altering environment and economy (Rescia et al., 2008; Gretter et al., 2018; Bernués et al., 2019). In southern Europe, 24.5% of the lands under annual and permanent crops were abandoned between 1961 and 2011 (Gabarrón-Galeote et al., 2015): for instance, in the Central Spanish Pyrenees, since the end of the 19th century, Lasanta-Martínez (1988) indicated that 71% of farmland has been abandoned, and Lasanta et al. (2001) noted that in Cameros Viejo (north-western Iberian Range, Spain) 99% of agricultural land was abandoned. The extent of abandonment has been also observed in the mountains in Poland (Kozak et al., 2004), Slovakia (Kuemmerle et al., 2008), and the French Prealps (Taillefumier and Piégay, 2003) where around 20% of farmland has been abandoned, and around 30% in the Carpathians (Hostert, 2010). In Central and Eastern Europe, Van Dijk et al. (2004) stated that between 10% and 20% of agricultural land has been abandoned. It is an ongoing trend, and about 11% of the agricultural European land is under high risk of abandonment in the coming 10 years (Perpiña Castillo et al., 2018), estimating that 5.6 Mha of land will be subject to abandonment by 2030 in Europe (Perpiña Castillo et al., 2021). More recently, the process of farmland abandonment is also occurring in other parts of the world (Yin et al., 2020), such as Brazil (Castro et al., 2020; Reichert et al., 2022), Mexico (Contreras-Cisneros et al., 2022), and China (Zhang et al., 2023). For all these reasons farmland abandonment should be perceived as a policy challenge (van der Zanden et al., 2017).

The drivers of farmland abandonment are very diverse, due to the interaction of global and local causes (Allison and Hobbs, 2006; Mottet et al., 2006; Verburg et al., 2007). Among the global causes, or external to a place, the scientific literature preferably includes: market dynamics and globalisation, public policies, labour demand by industry or the service sector involving the migration of the population from rural to urban areas, and technological and institutional changes (Lambin et al., 2001; Strijker, 2005; Sluiter and de Jong, 2007); while internal or local causes include ecological factors (climate, soil, topography, erosion) and the characteristics of livestock farms (location, size and ownership), as they condition the production and access to markets (Veyset et al., 2005; Rey Benayas et al., 2007; Van Vliet et al., 2015). Lasanta et al. (2017) concluded that global causes act as triggers of the abandonment process, while local causes condition the total abandoned surface and the areas that are abandoned, as they determine the productivity and, ultimately, the profitability and competitiveness of the product offered.

Land abandonment generates important changes in soil properties, due to soil tillage suspension and vegetation colonization (natural or managed) and post-land management practices (i.e. pasture establishment) that changes physico-chemical soil properties and soil quality (i.e. Zhang et al., 2012; van Hall et al., 2017; Gaspar et al., 2019; Lizaga et al., 2019). Natural revegetation processes and afforestation after farmland abandonment are different strategies to restore soil ecosystem services, such as nutrients, soil conservation and carbon sequestration (Bell et al., 2020), as well as a progressive improvement in soil characteristics (Lasanta et al., 2020). The main soil property studied after farmland abandonment is soil organic carbon (SOC) content and its variation over time (i.e. Bell et al., 2021; Sciubba et al., 2021). Carbon sequestration is one of the crucial factors which affects global climate change mitigation, as it has been highlighted in international reports, such as the Kyoto Protocol (article 3.3) or the Paris Agreement, including it as an important element for managing and reducing greenhouse emissions. Thus, the impact of farmland abandonment and revegetation processes, as well as, the role played as sources and sinks of SOC, have received increasing attention during the last decade (Navas et al., 2012; Lizaga et al., 2019; Bell et al., 2021; Nadal-Romero et al., 2021; Contreras-Cisneros et al., 2022). However, the dynamics of SOC are governed by its distribution into various pools or fractions, with contrasting behaviours and rates of turnover and that are differently affected by farmland abandonment and post-land management practices (Sanaullah et al., 2019). The method proposed by Golchin et al. (1994) for density

fractionation identified labile fractions (Free Light Fraction (FLF) composed mainly by undecomposed labile organic matter, and Occluded Light Fraction (OLF) composed by organic matter stabilized by aggregation) having a low mean residence time of days, months, or years, and the Heavy Fraction (HF) that is strongly associated with soil minerals having a higher mean residence time of decades to centuries (Lavalley et al., 2020).

This study aims to assess the effects of farmland abandonment and post-land abandonment management (through natural revegetation and afforestation) on soil properties and soil nutrients (soil organic carbon and nitrogen contents) in a Mediterranean mountain area. The specific objectives are to (i) quantify land use changes during the last 60 years in the Araguás catchment (Central Spanish Pyrenees) as a representative area of LULCC, (ii) assess at catchment scale the spatial patterns of soil properties and soil nutrients, soil organic and inorganic carbon, total nitrogen related to LULCC, and (iii) quantify changes in isolate organic carbon density fractions in afforested pine forests, natural shrublands, grasslands and sparsely vegetated areas. This leads to the following research hypotheses: (i) LULCC after farmland abandonment and post-land abandonment practices have a significant impact on soil nutrients and soil properties, and (ii) afforestation can accelerate the recovery of specific soil properties and nutrients after farmland abandonment compared to natural revegetated areas, although also other management options should be considered.

2. Materials and methods

2.1. Study area

The Araguás catchment is a small north-south catchment (0.45 km²) in the Central Spanish Pyrenees. The catchment has an altitude between 780 and 1100 m. a.s.l., and is largely occupied in the lower part by badlands (Fig. 1), while abandoned fields in different stages of natural succession or afforested are spread alongside the headwater. Mean annual precipitation of 800 mm and annual temperature of 10 °C characterizes the sub-Mediterranean climate of the catchment influenced by oceanic and continental regimes. Bedded thin layer of sandstones and marls form the main lithology of the catchment (Eocene marls in the lower part of the catchment and Eocene flysch in the headwater). The generalized steep slopes and the intense cultivation history of the catchment resulted in stony shallow soils formed mainly by Calcaric Leptic Regosols following the WRB taxonomy (IUSS Working Group WRB, 2015) although Leptosols are developed in the upper part of the catchment.

Before abandonment, the Araguás catchment was heavily cultivated with cereal crops in terraced fields that smoothed its hillslopes. By the end of the 1960ies, the upper part of the catchment was afforested with pine trees (*Pinus nigra* and *Pinus sylvestris*) while most of the abandoned fields underwent a natural revegetation process and were colonized by shrub species (*Juniperus communis*, *Genista scorpius*, *Rosa gr. canina* and *Buxus sempervirens*). These land use changes resulted in a current complex mosaic landscape alternating pine afforestation (Fig. 1A), shrublands (Fig. 1B), grasslands (Fig. 1C), and sparsely vegetated areas where the presence of badlands is apparent (Fig. 1D).

2.2. Experimental sampling design

In 2019 a total of 52 bulk core soil samples were collected. A steel core tube was used to collect two replicates of bulk soil samples at each sampling point from the surface until a depth varying from 30 to 40 cm depending on the local soil thickness. The sampling points were distributed proportionally across the catchment surface using a 100 × 100 m grid with a sampling density of 1.2 ha/sample (see Fig. 1A).

In order to establish the local reference inventory of the soil properties for the Araguás catchment, 9 sectioned core samples were collected in reference sites (see Khorchani et al., 2022). Reference sites

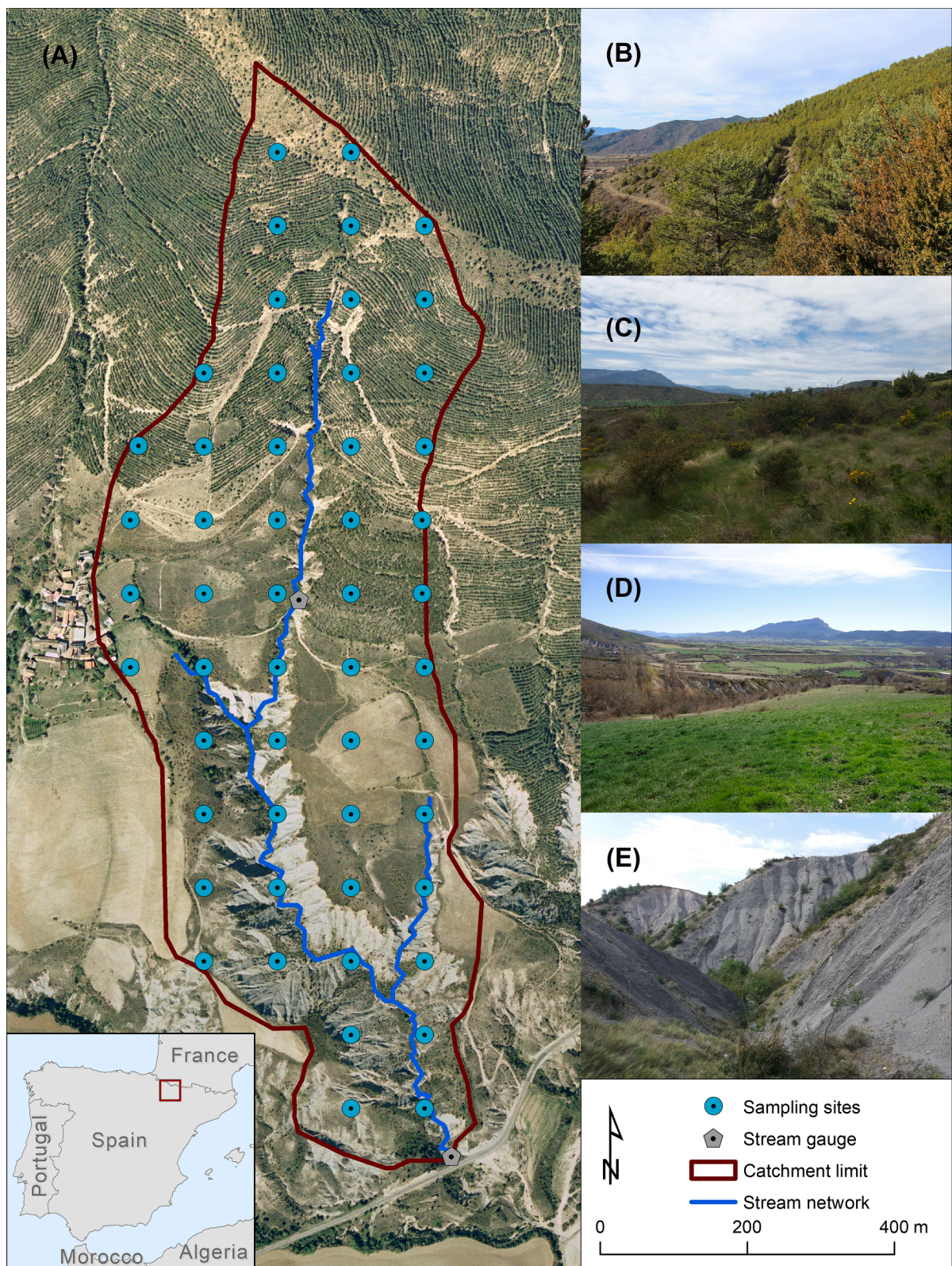


Fig. 1. Location of the Araguás catchment (Central Spanish Pyrenees) and overview of the present land use and land cover: (B) Afforested sites; (C) Shrubland sites; (D) Grassland sites; (E) Sparsely vegetated badlands sites.

correspond with flat undisturbed vegetated areas under stable conditions, where neither deposition or erosion processes were expected to have occurred during the last decades. In addition, top soil samples (first 5 cm) were sampled in each point to carry out density fractionation analysis from the top soil layers.

2.3. Laboratory analysis

The two soil cores from each sampling site were air-dried in the laboratory then mixed, homogenized and sieved over a 2 mm. The following physico-chemical soil properties were determined in the

laboratory (at the Pyrenean Institute of Ecology (IPE-CSIC), the Experimental Station of Aula Dei (EEAD-CSIC), and the Institute for Biodiversity and Ecosystem Dynamics (UvA-IBED)): (i) electrical conductivity (EC) and pH were measured in a deionized water suspension (1:2.5) using a pH meter and a conductivity meter; (ii) the > 2 mm fraction was weighed in order to account for the stone content (% stoniness), (iii) particle size analysis was carried out with a Beckman Coulter LS 13 320 laser diffraction particle size analyser (Beckman Coulter Inc., 2011) after oxidizing the organic matter by pre-treating the soil with H₂O₂ (10%) in a boiling water bath at 80 °C and adding 2 ml of solution of a dispersing agent (40% sodium hexametaphosphate to avoid grain flocculation); (iv) total carbon (TC), soil organic carbon (SOC) and total nitrogen (TN) were measured by dry combustion in an elemental analyser (LECO CNS 928, Leco Corporation); (v) CorgN ratio was calculated using SOC and TN; (vi) bulk density (BD) was estimated from undisturbed cores that were oven-dried at 105 °C for 24 h, (vii) CaCO₃ (%) was determined through the Bernard Calcimeter; and (viii) soil hydraulic properties (saturated soil moisture (Sat), field capacity (FC) and permanent wilting point (PWP)) were estimated using pedrotransfer functions (from texture data and organic matter values; Rawls et al. (1992)).

Density fractionation methodology was applied on non-sieved top soil samples (5 cm) following the methods of Golchin et al. (1994) and Cerli et al. (2012). Due to the time needed to fractionate soil samples, a smaller set was selected and 32 samples were analysed. Ten grams of soil were weighted in a centrifuge tube and 50 ml of sodium polytungstate (NaPT) of a density of 1.6 g cm⁻³ was added. The suspension stood for 1 h and after this time it was centrifuged at 6800 g for 20 min at room temperature. The floating material (free light fraction, FLF) was separated and collected on a 0.7 µm pore glass-fibre filters (Whatman GF/F filter), by using a rubber spatula, and washed with deionized water till the conductivity of the washing water was 200 µS cm⁻¹. The remaining soil was re-suspended into 50 ml of NaPT and then dispersed by ultrasound at 150 J mL⁻¹ (Sonopuls HD 3200 with VS70 probe), calibrated according to Schmidt et al. (1999) in an ice-bath to keep the temperature (40 °C). After the dispersion process, the samples were again centrifuged; the floating material (constituted the occluded light fraction, OLF) was then separated, filtered and washed with deionized water (as above described for the FLF). The remaining sample was washed by repeated addition of deionized water, shaken and centrifuged (10,000 g to ensure complete sedimentation of the smallest clay-size particles), until the conductivity of the wash water was by 500 µS cm⁻¹. The soil material (heavy fraction, HF) was then transferred into dark containers. All fractions were freeze-dried, homogenized (the HF was milled) and used for the determination of SOC, TN, CorgN ratio. In the HF the CaCO₃ content was also determined through the Bernard Calcimeter.

2.4. Data analysis

As the assumption of normal distribution per factor when checked by the Shapiro Wilk normality test was met for most parameters, parametric tests were used to monitor differences between LULC. The homogeneity of variance using Levene's test was also tested. Pearson's correlation coefficients were used to assess the relationships between the different physico-chemical soil properties and soil nutrients. A one-way analysis of variance (ANOVA) and the Tukey Post-Hoc tests (when the F test was significant) were performed to assess differences between LULC. In all cases, we considered differences to be statistically significant at $p < 0.05$. All statistical analyses were carried out using R 3.4.3.

Finally, an ordinary kriging with constant trend was selected to display the spatial distribution of soil properties at the catchment scale. All the output maps and interpolations were performed using ESRI ArcGis software.

3. Results

3.1. Land use and land cover changes

Fig. 2 and Table 1 show the LULCC in the Araguás catchment from 1957 related to the afforestation of the upper part of the catchment and the colonization of most of the abandoned fields by a natural revegetation cover. By the end of the 1950ies shrubs occupied 62.0% of the catchment while the remaining agricultural areas represented 21.2% of its surface. The process of land abandonment continued after 1957 and reduced the total agricultural area in the catchment to the half by 2018 (9.7% corresponding to grassland areas). On the other hand, active management plans of abandoned agricultural lands led to the afforestation of large areas in the Central Spanish Pyrenees. These management plans resulted in the afforestation of most of the upper part of the catchment by the end of the 1960ies. In 2018, the total afforested area represented 33% of the catchment contributing to an important decline in the shrub area that decreased to 41.7%, beside shrub colonization of the new abandoned fields.

3.2. Physico-chemical soil properties in the reference sites

Table 2 and Fig. 3 show the physico-chemical soil properties at the nine reference sites. In general, soils in the undisturbed areas were moderately developed. The coarse fraction was homogeneously distributed through the soil profile. Soils are stony with average amounts around 23.6%, reaching 58.7%. Silt fraction predominated with mean values around 41.2%. The mean values of clay and sand were 31.4 and 27.4%, respectively. Mean pH and EC values in the reference 5 cm intervals were 8.3 and 369 µS cm⁻¹ respectively. The mean contents of SOC and TN were 1.6% and 0.2% respectively, ranging between 0.3 and 5.7% and 0.1 and 0.4%. Mean CorgN ratio was 9.0, ranging between 3.9 and 18.0. The mean saturation point, field capacity and permanent wilting point were 0.5, 1.3 and 0.2 respectively.

The reference profiles showed an exponential decrease of sand, SOC, TN, CorgN from the surface to the deepest layers (Fig. 3). The clay fraction showed a slightly increase with depth, and silt content was distributed relatively uniform with depth, and had no significant differences between the top and deep soil layers. In addition, a slight increase in pH and field capacity values was recorded.

3.3. Physico-chemical soil properties in the grid points of the Araguás catchment

In the Araguás catchment soils are alkaline and non-saline. Soils were stony with average stoniness around 22%, reaching a maximum value of 43%. All the samples had a silt-loam texture with a predominance of silt (mean value of 67%), ranging between 57% and 76% (Fig. 4). Sand content oscillated between 4% and 29% (mean value of 14%), and clay content ranged between 13% and 27% with a mean value of 19%. Mean pH and EC values were 8.4 and 212 µS cm⁻¹ respectively, and high carbonate content was observed (39%). The mean contents of SOC and TN were low, ranging from 0.4% to 2.0% (mean value 1.1%) and 0.1% to 0.3% (mean value 0.1%) respectively. CorgN ratio oscillated between 4.5 and 12.4 with a mean value of 8.3 ± 2.1 . Only in the afforested sites, the CorgN ratio was generally higher than 10, considering this value optimal for the best incorporation rate of the organic matter into the soil profile (Table 3).

Significant differences were found between LULC (Fig. 4). Related to soil texture, silt and clay contents were significantly lower in the afforested areas compared with shrublands and sparsely vegetated areas. The means of clay, silt, sand, SOC, CorgN ratio, bulk density and field capacity in the afforested sites significantly differed from those in the shrubland sites. pH values were higher in the sparsely vegetated areas and significant differences were also found for silt, sand and pH values between grasslands and sparsely vegetated areas. Only,

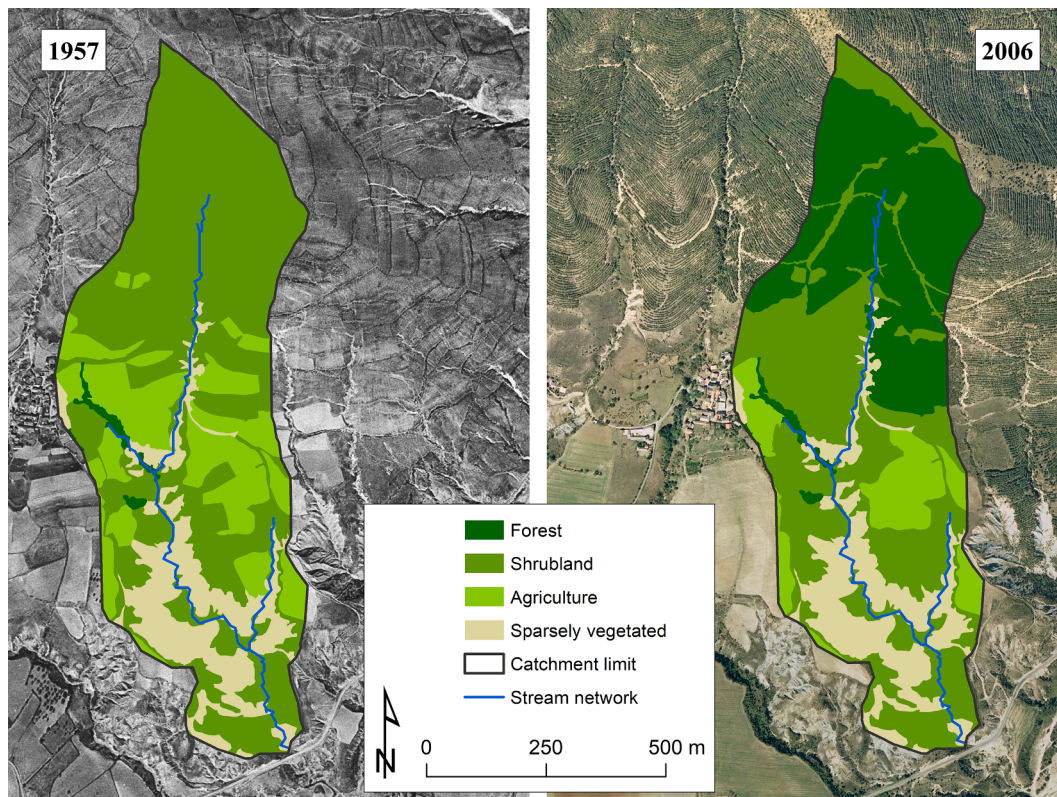


Fig. 2. Land uses and land covers in 1957 (left) and 2018 (right). (i) Forest area is based on afforestation practices carried out during the late 1960ies; (ii) Shrublands as natural revegetation process after land abandonment; (iii) Agriculture was based on cereals in 1957 and grasslands grazed by sheep in 2018; and (iv) Sparsely vegetated areas are related to badlands development.

Table 1

Land use and land cover changes between 1957 and 2018 in the Araguás catchment (Central Spanish Pyrenees) after farmland abandonment. (i) Forest area is based on afforestation practices carried out during the late 1960ies; (ii) Shrublands as natural revegetation process after land abandonment; (iii) Agriculture was based on cereals in 1957 and sheep-grazed grasslands in 2018; and (iv) Sparsely vegetated areas are related to badlands development.

	LULC in 1957 (%)	LULC in 2018 (%)
Agriculture	21.2	9.7
Forest	1.1	33.0
Shrubs	62.0	41.7
Sparsely vegetated	15.7	15.7

Table 2

Basic statistics of the physico-chemical soil properties in the Araguás catchment including reference sites (n = 9, the whole profile) and sampling points (n = 52, whole profile). SD: Standard deviation, Max: Maximum value, Min: Minimum value, CV: Coefficient of variation.

		Stoniness (%)	Clay (%)	Silt (%)	Sand (%)	pH	EC (µS/cm)	CaCO ₃ (%)	SIC (%)	SOC (%)	TN (%)	CorgN ratio	BD (g cm ⁻³)	Sat	FC	PWP
Reference sites	Median	24.5	30.6	34.4	26.4	8.4	323.9	32.5	4.2	1.1	0.1	8.4	1.2	0.5	1.2	0.2
	Mean	23.6	31.4	41.2	27.4	8.3	368.6	31.1	3.9	1.6	0.2	9.0	1.2	0.5	1.3	0.2
	SD	15.0	12.8	13.0	9.7	0.2	166.8	8.2	1.0	1.2	0.1	3.0	0.3	0.04	0.4	0.1
	Max	58.7	58.3	63.2	56.8	8.9	1055.0	43.4	5.2	5.7	0.4	18.0	1.8	0.7	2.2	0.3
	Min	0.3	13.5	21.1	13.4	7.7	169.8	6.4	0.9	0.3	0.1	3.9	0.6	0.4	0.6	0.1
Point samples	CV	0.6	0.4	0.3	0.4	0.0	0.5	0.3	0.3	0.7	0.4	0.3	0.2	0.1	0.3	0.2
	Median	20.7	18.8	67.4	13.5	8.4	215.5	40.0	4.8	1.1	0.1	8.3	1.3	0.5	0.9	0.1
	Mean	21.8	18.9	67.1	14.0	8.4	212.4	38.9	4.7	1.1	0.1	8.3	1.3	0.5	0.9	0.2
	SD	7.4	2.7	4.9	6.4	0.1	37.2	7.0	0.8	0.4	0.0	2.1	0.2	0.0	0.1	0.0
	Max	43.3	26.6	75.6	28.8	8.8	295.0	51.8	6.2	2.0	0.3	12.4	1.9	0.5	1.1	0.2
Min	4.6	13.4	56.5	4.3	8.2	16.3	19.1	2.3	0.4	0.1	4.5	0.8	0.4	0.7	0.1	
CV	0.3	0.1	0.1	0.5	0.0	0.2	0.2	0.2	0.2	0.3	0.3	0.2	0.0	0.1	0.1	

Note: EC, electrical conductivity; SIC, soil inorganic carbon; SOC, soil organic carbon; TN, total nitrogen; CorgN ratio, carbon and nitrogen ratio; BD, bulk density; Sat, saturation point; FC, field capacity; PWP, permanent wilting point.

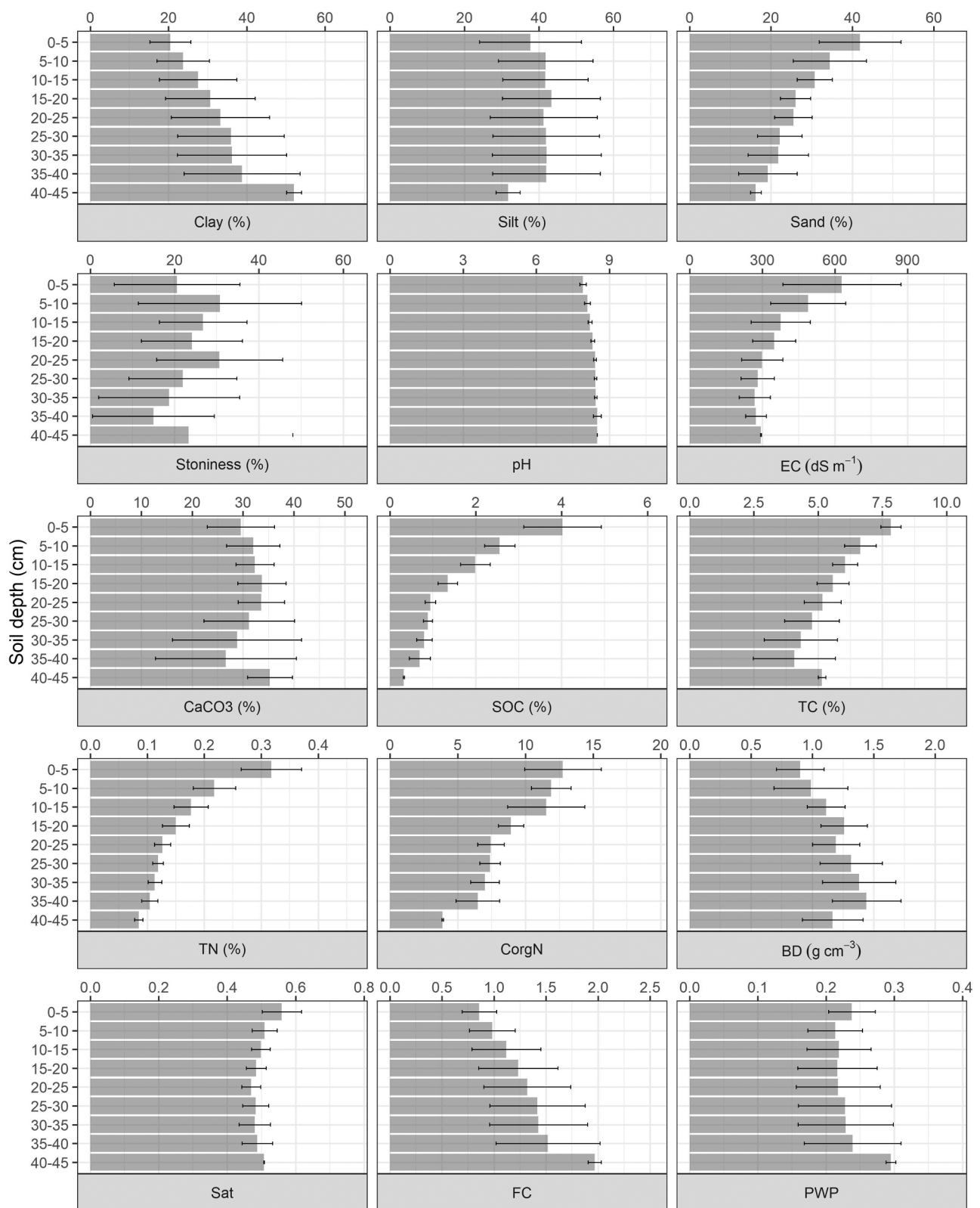


Fig. 3. Depth distribution of physico-chemical properties in the soil reference profiles (n = 9). Error bars represent the standard deviation. Note: EC, electrical conductivity; SOC, soil organic carbon; TC, total carbon; TN, total nitrogen; CorgN ratio, carbon and nitrogen ratio; BD, bulk density; Sat, saturation point; FC, field capacity; PWP, permanent wilting point.

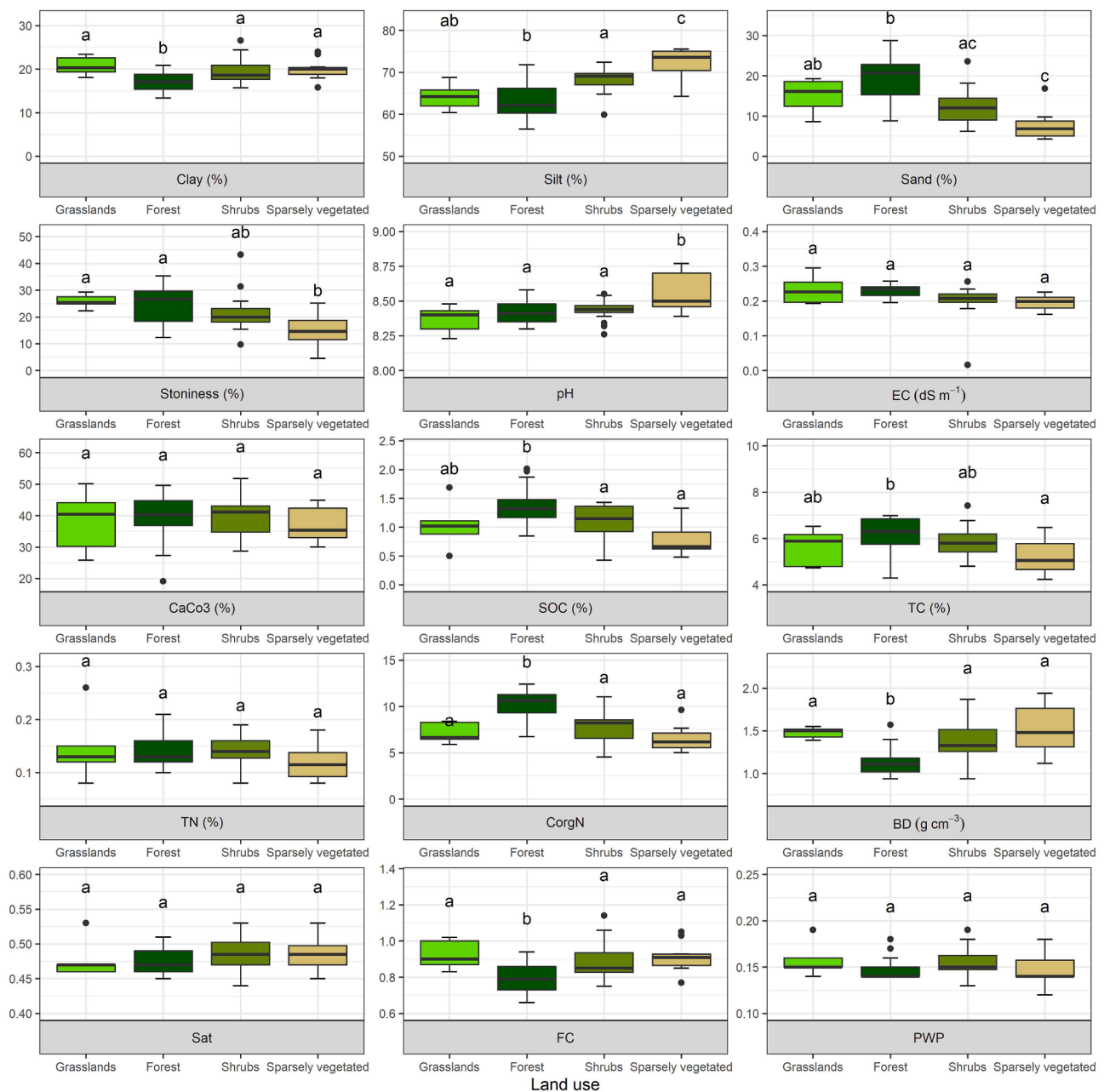


Fig. 4. Boxplot of main physico-chemical soil properties and nutrient contents in the different land use and land covers sites. Note: EC, electrical conductivity; SOC, soil organic carbon; TC, total carbon; TN, total nitrogen; CorgN ratio, carbon and nitrogen ratio; BD, bulk density; Sat, saturation point; FC, field capacity; PWP, permanent wilting point. Note: significant differences were indicating with different lower case letters (level of significance ($p < 0.05$)).

pattern in the catchment. High SOC, TC, TN were found at the upper part of the catchment, related to the presence of the afforested areas; while lower values were found in the lower part of the catchment, close to the main gully, linked to the presence of sparsely vegetated areas and badlands. The distribution of the edaphic properties is mainly determined by clay and SOC distribution however it doesn't exhibit a clear spatial pattern. High spatial variation was displayed and higher values were recorded in the middle part of the catchment.

3.4. Relationship between nutrients and soil properties

Table 4 shows the correlations between all physico-chemical soil properties and nutrients. SOC content was directly correlated with sand, EC, TN, CorgN ratio and saturation and wilting point, and inversely correlated with silt, pH, CaCO₃ and bulk density. Similar patterns to SOC

values were observed with TN.

Table 5 shows the correlation between nutrients and soil properties for afforestation and shrubland sites. In afforested areas, SOC content was directly correlated with sand, EC, TN, and wilting point, and inversely correlated with silt, pH and CaCO₃. In shrubland areas, SOC content was directly correlated with EC, TN, CorgN ratio and saturation and wilting point and inversely correlated with CaCO₃ content. The main discrepancy between both land uses was the lack of correlation between nutrients and particle size fractions in shrubland areas.

3.5. SOC content and density fractionation

The average SOC content in the reference sites considering the complete soil profile was 1.6%. Mean total SOC content in the catchment was 1.1% and contents in the different LULC were 1.4% in afforested

Table 3

Basic statistics of the physico-chemical properties of the sampling points under the different land uses and land covers in the Araguás catchment (n = 52, whole profile). SD: Standard deviation, Max: Maximum value, Min: Minimum value, CV: Coefficient of variation.

		Stoniness (%)	Clay (%)	Silt (%)	Sand (%)	pH	EC ($\mu\text{S}/\text{cm}$)	CaCO ₃ (%)	SOC (%)	TN (%)	CorgN ratio	BD (g cm ⁻³)	Sat.	FC	PWP
Grasslands n = 5	Median	25.4	20.3	64.2	16.1	8.4	226.2	40.5	1.0	0.1	6.7	1.5	0.5	0.9	0.2
	Mean	25.9	20.8	64.2	15.0	8.4	233.1	38.1	1.0	0.1	7.1	1.5	0.5	0.9	0.2
	SD	2.7	2.2	3.3	4.5	0.1	42.5	10.0	0.4	0.1	1.1	0.1	0.0	0.1	0.0
	Max	29.3	23.4	68.8	19.3	8.5	295.0	50.1	1.7	0.3	8.4	1.6	0.5	1.0	0.2
	Min	22.3	18.1	60.4	8.6	8.2	193.3	25.9	0.5	0.1	5.9	1.4	0.5	0.8	0.1
Afforestation n = 17	Median	24.3	17.5	64.0	20.6	8.4	231.6	41.7	1.3	0.1	10.7	1.1	0.5	0.8	0.1
	Mean	24.0	17.1	64.0	18.9	8.4	227.5	39.8	1.4	0.1	10.3	1.1	0.5	0.8	0.1
	SD	7.1	2.2	4.9	6.1	0.1	19.1	7.9	0.3	0.0	1.5	0.2	0.0	0.1	0.0
	Max	35.3	20.9	72.4	28.8	8.6	257.0	49.6	2.0	0.2	12.4	1.6	0.5	0.9	0.2
	Min	12.3	13.4	56.5	8.8	8.3	195.8	19.1	0.8	0.1	6.7	0.9	0.4	0.7	0.1
Shrublands n = 20	Median	19.9	18.6	68.4	12.9	8.4	212.2	39.7	1.2	0.1	8.2	1.3	0.5	0.8	0.1
	Mean	22.1	19.5	67.8	12.7	8.4	202.3	39.2	1.1	0.1	7.7	1.4	0.5	0.9	0.2
	SD	7.3	2.8	3.0	4.8	0.1	47.5	6.1	0.3	0.0	1.8	0.2	0.0	0.1	0.0
	Max	43.3	26.6	71.9	23.6	8.6	255.9	51.8	1.4	0.2	11.0	1.9	0.5	1.1	0.2
	Min	9.7	15.7	59.9	6.2	8.3	16.3	28.8	0.4	0.1	4.5	0.9	0.4	0.7	0.1
Sparsely vegetated badlands areas n = 10	Median	14.6	20.0	73.6	6.8	8.5	199.1	35.4	0.7	0.1	6.2	1.5	0.5	0.9	0.1
	Mean	15.4	20.0	72.4	7.6	8.6	196.3	36.9	0.8	0.1	6.5	1.5	0.5	0.9	0.1
	SD	6.2	2.4	3.6	3.7	0.1	21.5	5.8	0.3	0.0	1.4	0.3	0.0	0.1	0.0
	Max	25.2	24.0	75.6	16.8	8.8	226.1	44.9	1.3	0.2	9.6	1.9	0.5	1.1	0.2
	Min	4.6	15.8	64.3	4.3	8.4	161.3	30.1	0.5	0.1	5.0	1.1	0.4	0.8	0.1
	CV	0.4	0.1	0.1	0.5	0.0	0.1	0.2	0.4	0.3	0.2	0.2	0.0	0.1	0.1

Note: EC, electrical conductivity; SIC, soil inorganic carbon; SOC, soil organic carbon; TN, total nitrogen; CorgN ratio, carbon and nitrogen ratio; BD, bulk density; Sat, saturation point; FC, field capacity; PWP, permanent wilting point.

sites, 1.1% in shrublands and grasslands, and 0.8% in sparsely vegetated badland areas.

Related to soil fractions, the average recovery of soil mass after density fractionation was $99.83 \pm 1.13\%$, and FLF and OLF represented a small percentage of the soil mass in the different LULC (Table 6). In all the cases, SOC content was similar in FLF and OLF, being in both cases higher than in HF. FLF and OLF had SOC contents always higher than 14% while the HF contained only a small percentage of SOC, always lower than 2.9%.

Significant differences were only found in FLF and OLF fractions. In FLF and OLF, SOC contents in afforested sites were higher than in grasslands and sparsely vegetated areas. Differences were also observed between grasslands and shrublands. No differences were observed for HF between LULC (Fig. 6).

Also, significant differences were recorded for the mass of density fractions between different LULC. In all the LULC, the HF represented the most important part of the total SOC (Table 6). The contribution of the HF to SOC was slightly lower in the afforested sites (41.9%) while the FLF was higher in these sites (29.6%) (Table 6). A high contribution of HF to SOC is also recorded in grassland sites (Table 6).

CorgN ratios were higher in FLF and OLF compared to the ones recorded in HF, as both fractions are mainly composed of almost pure organic carbon (Fig. 6). Significant higher CorgN values were recorded in afforested sites (similar to the values recorded in the sparsely vegetated sites) compared to shrubland and grassland sites, suggesting lower quality of the organic matter. Contrarily, lower CorgN ratios in HF in shrubland and grassland sites can be related to an increase of the quality of the OM.

4. Discussion

4.1. LULCC and physico-chemical soil characteristics

The comparison between LULC of 1956 and 2018 in the Araguás catchment showed a sharp increase of forest area (from 1.1% to 33.0%) due to human intervention and afforestation practices at the expense of

shrubland and agriculture sites: shrubland was in 1956 the most extensive LULC occupying about 62.0% of the area, while agriculture represented about 21.2%. Farmland abandonment involves a process of vegetation succession with different temporal phases: herbaceous cover, shrubs, cleared forest and dense forest (García-Ruiz and Lana-Renault, 2011). This process determines changes in landscape structure from a mosaic landscape, with a high degree of diversity and a high number of patches to a more homogeneous landscape, in which natural features dominate (Antrop, 2005; Lasanta-Martínez et al., 2005; Palang et al., 2005; Agnoletti, 2014). However, post abandonment management practices after farmland abandonment (i.e. natural revegetation, afforestation, shrubland clearing, pasture establishment) can introduce significant changes in landscape structure and quality, and land degradation (using soil quality and SOC stocks as main indicators), soil erosion and water resources.

Revegetation processes (natural or human-induced) after farmland abandonment is a worldwide phenomenon (i.e. Sluis et al., 2014; Castro et al., 2020; Yin et al., 2020). Different studies in Mediterranean mountain areas suggested that these LULCC affect ecosystem services, such as quantity and quality of water resources (García-Ruiz et al., 2011), pastoral resources (e.g., Gartzia et al., 2016; Lasanta et al., 2016), and soil quality, soil conservation and soil carbon sequestration (i.e., Navas et al., 2008; De Baets et al., 2013; Boix-Fayos et al., 2020).

Significant differences were observed between reference sites (non-disturbed) and catchment/grid points. Reference sites present higher nutrients contents (SOC, TN), CorgN ratios and sand and silt contents, than grid points. The results, observed in the Araguás catchment, indicated that farmland abandonment and the legacy of the historic LULCC after farmland abandonment is one of the principal factors affecting the variation of physico-chemical soil properties, as has been demonstrated in other studies worldwide (Zornoza et al., 2009; Cuesta et al., 2012; Yaşar Korkanç, 2014; Nadal-Romero et al., 2016; Lizaga et al., 2019; Sciubba et al., 2021).

According to the interpolation analysis and the spatial distribution of the physical and chemical soil properties there is a large variation across the Araguás catchment. Significant differences have been observed

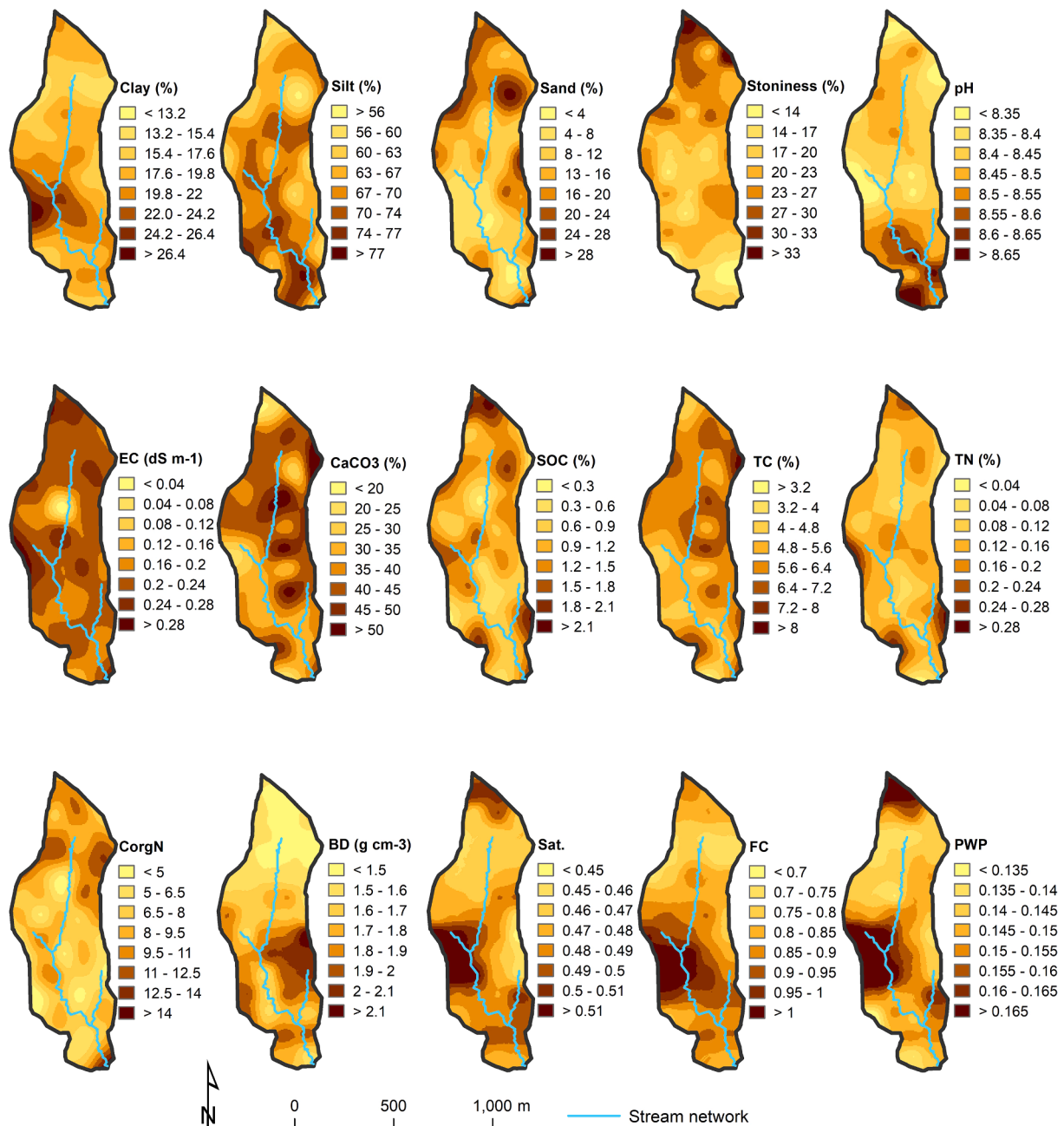


Fig. 5. Spatial distribution of the soil properties in the Araguás catchment. Note: EC, electrical conductivity; SOC, soil organic carbon; TC, total carbon; TN, total nitrogen; CorgN ratio, carbon and nitrogen ratio; BD, bulk density; Sat, saturation point; FC, field capacity; PWP, wilting point.

under the different LULC. Variations in pH are probably due to the LULCC and the distribution of the parent material (Catoni et al., 2016; Company et al., 2022). The high pH of the soils is due to the dominance of alkaline parent material (Eocene marls and Eocene flysch), with high presence of carbonates (mean value around 39%). Afforestation generated a greater accumulation of litter in the top soil that could contribute to significant decrease in soil pH due to the acidifying effect of pine litter (Iovieno et al., 2010). Contrary, higher pH values were recorded in sparsely vegetated badland areas, linked to badlands occurrence and the presence of Eocene marls in the lower part of the catchment.

Although scientific literature suggests that soil texture and particle size distribution are less dynamics (i.e., Gaspar and Navas, 2013), some changes may occur due to anthropogenic activities, LULCC and post-land abandonment management practices. Our results showed significant differences between afforested sites (higher sand contents) and

shrubland and sparsely vegetated areas related to soil texture (higher silt contents). Different authors also suggested the influence of the parent material on soil texture, which can be also related to the SOC contents (Company et al., 2022). So, the possible influence of parent material should not be discarded (Eocene flysch in the upper part and Eocene marls in the lower part of the catchment) and further studies should be focused in the evaluation of parent material after land abandonment and revegetation processes and management practices. No differences were observed between LULC for saturation and wilting point contents related to the relative homogeneous textures of the soil of the catchment. However, lower field capacity values were recorded in the afforested areas, related to the low clay and silt contents and the high sand and organic carbon contents.

Afforestation and natural revegetation (i.e. shrublands) after farmland abandonment are different strategies to restore soil properties, soil

Table 4
Correlation coefficients among physico-chemical properties for all land use and depths.

	Stoniness	Clay	Silt	Sand	pH	EC	CaCO ₃	SOC	TN	CorgN	BD	Sat	FC
Clay	-0.208												
Silt	-0.545	0.368											
Sand	0.503	-0.708	-0.917										
pH	-0.396	-0.016	0.578	-0.432									
EC	0.249	0.056	-0.513	0.366	-0.547								
CaCO ₃	-0.037	-0.307	0.084	0.067	0.002	-0.373							
SOC	0.211	-0.217	-0.577	0.532	-0.554	0.645	-0.376						
TN	0.099	0.129	-0.328	0.194	-0.531	0.543	-0.401	0.693					
CorgN	0.164	-0.431	-0.464	0.536	-0.266	0.410	-0.073	0.716	0.018				
BD	-0.602	0.388	0.418	-0.484	0.226	-0.232	0.081	-0.433	0.012	-0.586			
Sat	-0.278	0.660	0.333	-0.535	-0.151	0.299	-0.485	0.413	0.508	0.090	0.110		
FC	-0.253	0.996	0.450	-0.768	0.040	0.004	-0.286	-0.264	0.092	-0.459	0.414	0.666	
PWP	-0.041	0.741	-0.071	-0.263	-0.396	0.496	-0.533	0.494	0.589	0.109	0.048	0.870	0.705

Bold numbers indicate statistical significance at $p \leq 0.05$ level. Bold and italicized numbers indicate statistical significance at $p \leq 0.01$.

Note: EC, electrical conductivity; SOC, soil organic carbon content; TN, total nitrogen content; CorgN, ratio organic carbon and nitrogen; BD, bulk density; Sat, Saturation capacity; FC, field capacity; PWP, permanent wilting point.

quality and soil conservation. Mean contents of clay, silt, sand, SOC, CorgN ratio, bulk density and field capacity were significantly different in the afforested sites compared to shrubland sites related mainly to parent material (i.e. grain size) and LULC (i.e. nutrient contents). For instance, De Marco et al. (2022) and Cuesta et al. (2012) indicated that afforestation practices can accelerate the recovery of some soil properties of abandoned farmland in comparison with secondary succession, but these effects are noticeable at long-term scale.

Bulk density decreased in afforested sites related to the higher above, as well as belowground biomass production. Indeed, a strong negative correlation have been observed between bulk density values and soil organic carbon. Also, grain size distribution presents a significant correlation with bulk density values (positive with silt and clay, and negative with sands). Similar results have been reported in previous studies (i.e. Alawamy et al., 2022). High bulk density values (as the one recorded in grassland and shrubland sites), may be related to both past and present agricultural practices and grazing activities, triggering soil compaction and limiting root extension.

Contrary, CorgN ratios were higher in afforested sites. Similar results have been reported by many authors after afforestation with conifers (Martín-Peinado et al., 2016; Segura et al., 2020). These authors suggested that CorgN increases could be related to gradual inputs from litter fall, and their low decomposition rates, which would also support a higher stability of SOC (Cunningham et al., 2015). A positive and significant correlation between CorgN and SOC contents found in the Araguás catchment (considering only shrublands) indicates that the accumulation rate of organic carbon is higher than nitrogen accumulation after farmland abandonment and LULCC.

4.2. Soil organic carbon and density fractionation

The effects of LULCC and afforestation on SOC contents and stocks have been synthesized worldwide by Post and Kwon (2000), Guo and Gifford (2002), Paul et al. (2002) and Li et al. (2012). Likewise, scientific literature discussed the effects of land abandonment and revegetation processes in Mediterranean mountain areas on SOC contents and stocks, showing contrasting results, with increases, decreases or not changes after farmland abandonment (Muñoz-Rojas et al., 2011; Gabarrón-Galeote et al., 2015; Rodríguez-Martín et al., 2016; Djuma et al., 2020; Bell et al., 2021; Nadal-Romero et al., 2021). Likewise, similar results were found in other studies worldwide. Reichert et al. (2022) in Southern Brazil concluded that land abandonment and natural revegetation increased soil organic matter, nutrients and microbial activity. Besides, Wertebach et al. (2017) found significant differences in SOC values after land abandonment, limited to the topsoil (0–5 cm). In all cases, SOC increased significantly with time since abandonment. Contrarily, Contreras-Cisneros et al. (2022) indicated that SOC tended to

decrease as years of abandonment increase, suggesting that SOC accumulation after farmland abandonment through unmanaged succession is difficult to achieve.

The results recorded in the Araguás catchment confirm that afforestation induced profound changes in soil characteristics and soil organic carbon contents. Afforestation with conifers has positive effects on SOC and TN contents, favouring forest floor development due to the input of aboveground and belowground tree litter. Conifer litter decomposes more slowly (low-litter quality of pines comparing with herbaceous understory biomass) and there is a greater build-up of conifer litter and a different distribution of SOC and TN along the soil profile (Rumpel and Kögel-Knabner, 2011; Segura et al., 2020). Higher SOC contents in pine afforested areas can also be due to the higher density of the vegetation cover. Studies in Pyrenean abandoned fields have shown significant differences in SOC and TN contents along with changes in other general soil properties in function of the age of abandonment (Navas et al., 2012). This was attributed to the effect of natural revegetation on soil recovery for longer periods of land abandonment.

Lower SOC contents were recorded in shrubland and sparsely vegetated badland areas. In the case of shrublands, the low SOC content is related to the less mature plants. Likewise, in shrubland sites, the lower mass and turnover of fine roots can also prevent the decomposition of SOM and reduce SOC stocks.

In agreement with our findings, other studies have indicated the relevant role of grasslands for enhancing accumulation of soil organic carbon, in some cases at similar levels compared to forest (Post and Kwon, 2000; Jackson et al., 2002; Wei et al., 2012). In that sense, Boix-Fayos et al. (2009) indicated that SOC concentrations in pasturelands do not often differ significantly from those found in Mediterranean forest. Our results show that no significant differences were observed between grassland and afforested sites related to SOC values. In that sense, different authors suggested that the conservation of grassland ecosystem is important for preserving the ecosystem services they provided such as sequestration of CO₂ (Castillo-García et al., 2022) and suggest that pasture establishment on abandoned farmland sites is one of the alternatives that may help to restore soil conditions.

Significant correlations were observed between SOC and TN contents, although no significant differences were observed related to TN between different LULC, remaining stable over the time of abandonment and different management. This relationship suggests a similar pathway of both nutrients. Several authors have reported no differences between LULC related to TN. For instance, Lizaga et al. (2019) suggested that natural revegetation boosted TN and no differences were observed between natural revegetation and afforestation sites.

Likewise, the biogeochemical cycles of carbon fractions are strongly influenced by LULC. FLF (influenced by plant residue inputs that are easily decomposed) is easily affected by LULCC and land management,

Table 5
Correlation coefficients among physico-chemical properties. The upper triangle (yellow) shows the correlation values for the shrubland samples (n = 20) and the lower triangle (green) shows the correlation values for the afforested samples (n = 17).

	Stoniness	Clay	Silt	Sand	pH	EC	CaCO ₃	SOC	TN	CorgN	BD	Sat	FC	PWP
Stoniness														
Clay	0.046													
Silt	-0.545	0.423												
Sand	-0.417	-0.693	0.946											
pH	-0.468	0.270	0.432	-0.440										
EC	0.573	-0.188	-0.742	-0.657	-0.544									
CaCO ₃	-0.404	-0.193	-0.545	-0.364	0.385	-0.632								
SOC	0.343	-0.289	-0.546	0.538	-0.535	0.690	-0.622							
TN	0.376	0.003	-0.413	0.328	-0.485	0.641	0.685	0.794						
CorgN	0.011	-0.479	0.237	0.360	-0.160	0.307	-0.044	0.459	-0.167					
BD	-0.780	0.045	0.561	-0.462	0.274	-0.651	0.354	-0.338	-0.376	0.250	0.442	0.603	0.470	0.747
Sat	-0.047	0.602	0.446	-0.570	-0.034	0.074	-0.302	0.370	0.440	-0.052	-0.345	0.390	-0.028	0.376
FC	-0.021	0.994	0.517	-0.766	0.306	-0.265	-0.118	-0.337	-0.046	-0.017	0.115	0.008	0.136	0.9949
PWP	0.300	0.672	-0.045	-0.204	-0.168	0.429	-0.656	0.514	0.621	-0.082	-0.221	0.621	0.824	0.864

Bold numbers indicate statistical significance at $p \leq 0.05$ level. Bold and italicized numbers indicate statistical significance at $p \leq 0.01$. Note: EC, electrical conductivity; SOC, soil organic carbon content; TN, total nitrogen content; CorgN, ratio organic carbon and nitrogen; BD, bulk density; Sat., Saturation capacity; FC, field capacity; PWP, permanent wilting point.

and this fraction can be considered a sensitive indicator for evaluating changes in SOC as was already suggested by Sainepo et al. (2018) and Gaspar et al. (2019). In grassland samples, the relative contribution of FLF and OLF is lower than in the other LULC, especially compared with afforested samples. Higher FLF values were found in afforested sites, due to high litter input and also high CorgN ratios in coniferous forest. HF is the main pool of SOC for all LULC having grassland the highest HF pool (63.2%) and the afforested sites the lowest (30.6%), and no differences were observed between LULCC, similar to other results, indicating that remained stable over time. The high HF values in grassland sites might be related to belowground carbon input by grassland species, that contribute to more stable fractions due to root exudation and microbial secretion (Malhotra et al., 2018; Sanderman et al., 2021; Li et al., 2022). Trigalet et al. (2016) suggested that labile fractions gradually increased after land abandonment, indicating a high sensitivity of the fraction to the carbon input changes. Our results showed a higher SOC content in afforested sites, that can be related to the larger labile forms (FLF and OLF). However, SOC accumulation in labile forms in afforested sites could hinder the feasibility of coniferous afforestation to restore degraded soils and enhance soil quality. Instead, grassland can be found as a suitable alternative able to increase SOC content, and stabilize SOC.

We focus only on the top soil layer, as it is accepted to be the most sensitive layer. However, Poeplau and Don (2013) carried out a global analysis across Europe including subsoil samples and similar results were found. In that sense, we consider that further research focused on subsoil should be carried out, although density fractionation is a time-consuming laboratory practice. In that sense, novel techniques, such as spectroscopy could help to solve this time limitation and research gap (see Jaconi et al., 2019; Angelopoulou et al., 2020, 2019).

This study has demonstrated that land use and land cover changes exert an important control on physico-chemical soil properties and nutrients in Mediterranean mountain areas. The responses after farmland abandonment are strongly variable and it is still a controversial issue in the scientific literature. In that sense, the results obtained in the Araguás catchment are due to a long history of human intervention through cultivation in steep slopes and afforestation programmes. In addition, the extrapolation of the results at catchment scale (small catchment with different contrasted land uses) is complex, but allow us to obtain a new and better understanding of the spatial extent and the differences between afforestation and revegetation in equal geographical conditions.

One of the main difficulties was founding for locations for the reference sites (undisturbed vegetated areas). This issue has been already noted by different authors, such as Parson and Foster (2011) that questioned the assumption of the representativeness of the reference sites and its conservative behaviour. To overcome this limitation, a careful planning, a detailed soil sampling, expert knowledge of the study area and robust statistical analysis are determinant.

Assessing LULCC is critical for understanding future challenges in land management and climate change adaptation measures in Mediterranean mountain areas. In that sense, scientific studies and stakeholders should be taken into account to decide what is the best post-land use management practices after farmland abandonment.

5. Conclusion

Identifying and monitoring land use and land cover changes, and understanding their impacts in soil physico-chemical properties is critical to improve the sustainability of soil and land management after farmland abandonment. The main objective of this study was to provide insights into the effects of farmland abandonment and post-land abandonment management practices (i.e. natural revegetation, afforestation) on soil physico-chemical properties and soil organic carbon dynamics, in a small representative Mediterranean mountain catchment.

This study confirms that LULCC is one of the principal factors affecting the variation of physico-chemical soil properties, together with parent material. In general, significant differences between LULC have

Table 6

Density fractionation results: soil recovery per fraction, SOC (Soil Organic Carbon) per fraction and contribution (%) of the different fractions to total SOC in the different LULC.

	Soil recovery (%)				SOC (mg g ⁻¹)			Recovery % SOC		
	FLF	OLF	HF	Total	FLF	OLF	HF	FLF	OLF	HF
Grasslands (n = 5)	1.59	1.69	96.89	100.0	23.68	33.59	1.62	15.76	21.00	63.20
Afforestation (n = 10)	3.59	3.25	93.18	100.0	32.35	39.91	1.68	29.62	28.47	41.92
Shrublands (n = 12)	2.87	2.50	94.58	99.9	29.63	37.80	1.89	24.10	27.11	48.79
Sparsely vegetated areas (n = 5)	2.50	1.79	94.55	98.8	38.04	36.81	1.35	27.26	25.98	46.77

Note: FLF: Free Light Fraction; OLF: Occluded Light Fraction; HF: Heavy Fraction.

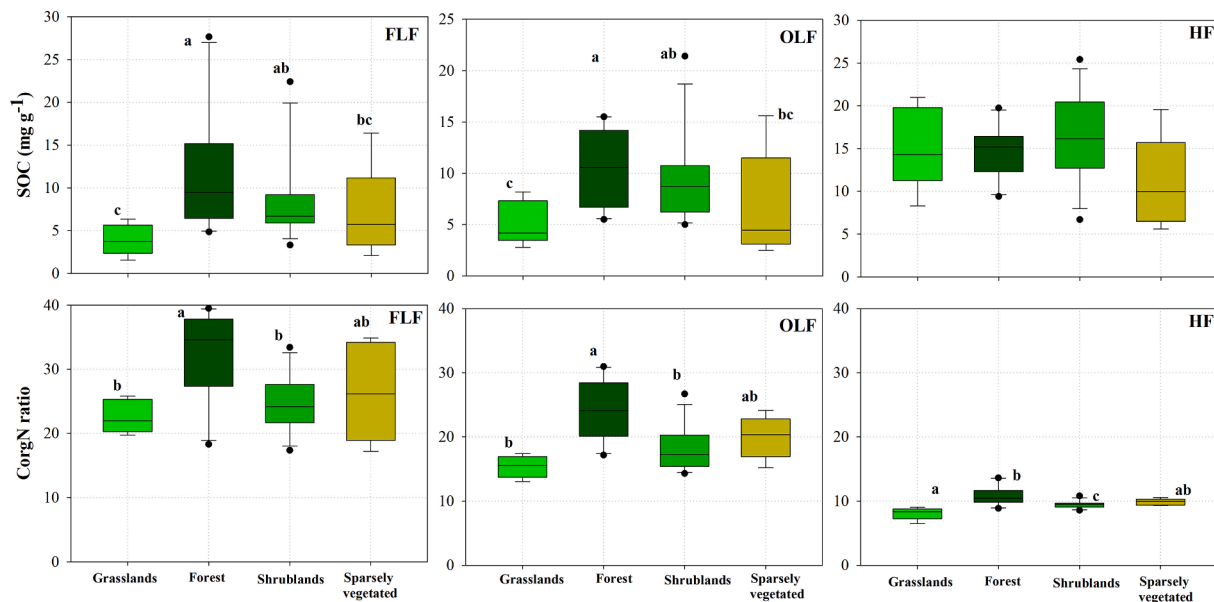


Fig. 6. Soil organic carbon (SOC) and CorgN ratios in the three different density fractions. Note: FLF: Free Light Fraction; OLF: Occluded Light Fraction; HF: Heavy Fraction. Significant differences were indicating with different lower case letters (level of significance ($p < 0.05$)).

been found related to soil texture, stoniness, pH, soil organic carbon, total carbon, CorgN ratio, bulk density and field capacity. Differences between afforested and shrublands were detected for few parameters; higher values were recorded in afforested sites for clay and silt and soil organic carbon contents, CorgN ratio, bulk density and field capacity. Significant differences related to SOC content between shrubland and afforested sites suggest that soil organic carbon only increase slowly after the termination of agricultural activities, and that in the short term, afforestation produces a faster increase in SOC than natural revegetation process (1.4 and 1.1%, respectively). However, no differences were observed in the total nitrogen contents (0.1% in both cases).

In addition, the significant role of grassland in enhancing the accumulation of soil organic carbon has been proved. Likewise, the relative contribution of each of the organic carbon fractions to the bulk soil organic carbon showed differences between LULC. The amount of FLF and OLF is significantly higher in afforested (58.1%) and shrubland sites (51.2%) than in grassland sites (36.8%), suggesting that grassland species contribute to SOC stabilization in the stable fraction.

Further research should be carried out to understand the role of soil redistribution processes on nutrient stocks (SOC and TN) and to discern the effects of parent material and other different post-land management practices after land abandonment in Mediterranean mountain areas.

Declaration of Competing Interest

The authors declare that they have no known competing financial

interests or personal relationships that could have appeared to influence the work reported in this paper.

Data availability

Data will be made available on request.

Acknowledgements

This research was supported by the MANMOUNT project (PID2019-105983RB-100/AEI/10.13039/501100011033), funded by the MICINN-FEDER, the RednutSOIL project PID2019-104857RB-100, funded by the MCIN/AEI/10.13039/501100011033 and the PRX21/00375 project funded by the Ministry of Universities of Spain from the “Salvador de Madariaga” programme. The “Geoenvironmental Processes and Global Change” (E02_17E) research group is financed by the Aragón Government and the European Social Fund (ESF-FSE). Makki Khorchani was working with an FPI contact (BES-2016-077992) from the Spanish Ministry of Economy and Competitiveness associated with the ESPAS project. We are thankful for the support of laboratory technicians during the laboratory and field work.

References

Agnoletti, M., 2014. Rural landscape, nature conservation and culture: Some notes on research trends and management approaches from a (southern) European

- perspective. *Landscape Urban Plan.* 126, 66–73. <https://doi.org/10.1016/j.landurbplan.2014.02.012>.
- Alawamy, J.S., Balasundram, S.K., Mohd, Hanif, A.H., Teh Boon Sung, C., 2022. Response of potential indicators of soil quality to land-use and land-cover change under a Mediterranean climate in the Region of Al-Jabal Al-Akhdar, Libya. *Sustain.* 14, 162. <https://doi.org/10.3390/su14010162>.
- Allison, H.E., Hobbs, R.J., 2006. Resilience, adaptive and the “lock-in” trap of the Western Australian agricultural region. *Ecol. Society* 9 (1), 38–46.
- Angelopoulou, T., Balafoutis, A., Zalidis, G., Bochtis, D., 2020. From Laboratory to Proximal Sensing Spectroscopy for Soil Organic Carbon Estimation—A Review. *Sustain.* 12, 443. <https://doi.org/10.3390/su12020443>.
- Angelopoulou, T., Tziolas, N., Balafoutis, A., Zalidis, G., Bochtis, D., 2019. Remote Sensing Techniques for Soil Organic Carbon Estimation: A Review. *Remote Sens.* 11, 676. <https://doi.org/10.3390/rs11060676>.
- Antrop, M., 2005. Why landscapes of the past are important for the future. *Landscape Urban Plan.* 70, 21–34. <https://doi.org/10.1016/j.landurbplan.2003.10.002>.
- Bell, S., Barriocanal, C., Terrer, C., Rosell-Melé, A., 2020. Management opportunities for soil carbon sequestration following agricultural land abandonment. *Environ. Sci. Policy* 108, 104–111. <https://doi.org/10.1016/j.envsci.2020.03.018>.
- Bell, S., Terrer, C., Barriocanal, C., Jackson, R.B., Rosell-Melé, A., 2021. Soil organic carbon accumulation rates on Mediterranean abandoned agricultural lands. *Sci. Total Environ.* 759, 143535. <https://doi.org/10.1016/j.scitotenv.2020.143535>.
- Bernués, A., Alfnes, F., Cletmesen, M., Erik, L.O., Faccioni, G., Ramanzin, M., Ripoll-Bosch, R., Rodríguez-Ortega, T., Sturaro, E., 2019. Exploring social preferences for ecosystem services of multifunctional agriculture across policy scenarios. *Ecosyst. Services* 39, 101002. <https://doi.org/10.1016/j.ecoser.2019.101002>.
- Boix-Fayos, C., de Vente, J., Albaladejo, J., Martínez-Mena, M., 2009. Soil carbon erosion and stock as affected by land use changes at the catchment scale in Mediterranean ecosystems. *Agric. Ecosyst. Environ.* 133, 75–85. <https://doi.org/10.1016/j.agee.2009.05.013>.
- Boix-Fayos, C., Boerboom, L.G.J., Janssen, R., Martínez-Mena, M., Almagro, M., Pérez-Cutillas, P., Eekhout, J.P.C., Castillo, V., de Vente, J., 2020. Mountain ecosystem services affected by land use changes and hydrological control Works in Mediterranean catchments. *Ecosyst. Serv.* 44, 101136. <https://doi.org/10.1016/j.ecoser.2020.101136>.
- Castillo-García, M., Alados, C.L., Ramos, J., Moret, D., Barrantes, O., Pueyo, A., 2022. Understanding herbivore-plant-soil feedbacks to improve grazing management on Mediterranean mountain grasslands. *Agric. Ecosyst. Environ.* 327, 107833. <https://doi.org/10.1016/j.agee.2021.107833>.
- Castro, P., Pedrosa, R., Lautenbach, S., Vicens, R., 2020. Farmland abandonment in Rio de Janeiro: Underlying and contributory causes of an announced development. *Land Use Pol.* 95, 104633. <https://doi.org/10.1016/j.landusepol.2020.104633>.
- Catoni, M., D’Amico, M.E., Zanini, E., Bonifacio, E., 2016. Effect of pedogenic processes and formation factors on organic matter stabilization in alpine forest soils. *Geoderma* 263, 151–160. <https://doi.org/10.1016/j.geoderma.2015.09.005>.
- Cerli, C., Celi, L., Kalbitz, K., Guggenberger, G., Kaiser, K., 2012. Separation of light and heavy organic matter fractions in soil-testing for proper density cut-off and dispersion level. *Geoderma* 170, 403–416. <https://doi.org/10.1016/j.geoderma.2011.10.009>.
- Company, J., Valiente, N., Fortesa, J., García-Comendador, J., Lucas-Borja, M., Ortega, R., Miralles, I., Estrany, J., 2022. Secondary succession and parent material drive soil bacterial community composition in terraced abandoned olive groves from a Mediterranean hyper-humid mountainous area. *Agric. Ecosyst. Environ.* 332, 107932. <https://doi.org/10.1016/j.agee.2022.107932>.
- Contreras-Cisneros, A.J., Mata-González, R., Trejo-Calzada, R., Pedroza-Sandoval, A., Prado-Tarango, D., Abdallah, M.A.B., 2022. Carbon and nitrogen stocks through time in abandoned croplands of the Comarca Lagunera. *Mexico. Agric. Ecosyst. Environ.* 327, 107828. <https://doi.org/10.1016/j.agee.2021.107828>.
- Cuesta, B., Rey Benayas, J.M., Gallardo, A., Villar-Salvador, P., González-Espinosa, M., 2012. Soil chemical properties in abandoned Mediterranean cropland after succession and oak reforestation. *Acta Oecol.* 38, 58–65. <https://doi.org/10.1016/j.actao.2011.09.004>.
- Cunningham, S.C., Mac Nally, R., Baker, P.J., Cavagnaro, T.R., Beringer, J., Thompson, J.R., Thompson, R.M., 2015. Balancing the environmental benefits of reforestation in agricultural regions. *Perspect. Plant Ecol. Evol. Syst.* 17 (4), 301–317. <https://doi.org/10.1016/j.ppees.2015.06.001>.
- De Baets, S., Meersmans, J., Vanacker, V., Quine, T.A., Van Oost, K., 2013. Spatial variability and change in soil organic carbon stocks in response to recovery following land abandonment and erosion in mountainous drylands. *Soil Use Manage.* 29, 65–76. <https://doi.org/10.1111/sum.12017>.
- De Marco, A., Panico, S.C., Memoli, V., Santoroulo, L., Zarrelli, A., Barile, R., 2022. Differences in soil carbon and nitrogen pools between afforested pine forests and natural shrublands in a Mediterranean area. *Appl. Soil Ecol.* 170, 104262. <https://doi.org/10.1016/j.apsoil.2021.104262>.
- Djuma, H., Bruggeman, A., Zissimos, A., Christoforou, I., Eliades, M., Zoumides, C., 2020. The effect of agricultural abandonment and mountain terrace degradation on soil organic carbon in a Mediterranean landscape. *Catena* 195, 104741. <https://doi.org/10.1016/j.catena.2020.104741>.
- Gabarrón-Galeote, M.A., Trigalet, S., van Wesemael, B., 2015. Effect of land abandonment on soil organic carbon fractions along a Mediterranean precipitation gradient. *Geoderma* 249–250, 69–78. <https://doi.org/10.1016/j.geoderma.2015.03.007>.
- García-Llamas, P., Geijzenborffer, I.R., García-Nieto, A.P., Calvo, L., Suárez-Seoane, S., Cramer, W., 2019. Impact of land cover change on ecosystem services supply in mountain systems: a case study in the Cantabrian Mountains (NW of Spain). *Reg. Environ. Chang.* 19, 529–542. <https://doi.org/10.1007/s10113-018-1419-2>.
- García-Ruiz, J.M., Lana-Renault, N., 2011. Hydrological and erosive consequences of farmland abandonment in Europe, with special reference to the Mediterranean region - A review. *Agric. Ecosyst. Environ.* 140, 317–338. <https://doi.org/10.1016/j.agee.2011.01.003>.
- García-Ruiz, J.M., López-Moreno, J.L., Vicente-Serrano, S., Lasanta, T., Beguería, S., 2011. Mediterranean water resources in a Global Change scenario. *Earth-Sci. Rev.* 105 (3–4), 121–139. <https://doi.org/10.1016/j.earscirev.2011.01.006>.
- Gartzia, M., Fillat, F., Pérez-Cabello, F., Alados, C.L., 2016. Influence of Agropastoral system components on mountain grassland vulnerability estimated by connectivity loss. *PLoS One* 11 (5), e0155193.
- Gaspar, L., Navas, A., 2013. Vertical and lateral distributions of ¹³⁷Cs in cultivated and uncultivated soils on Mediterranean hillslopes. *Geoderma* 207–208, 131–143. <https://doi.org/10.1016/j.geoderma.2013.04.034>.
- Gaspar, L., Quijano, L., Lizaga, I., Navas, A., 2019. Effects of land use on soil organic and inorganic C and N at ¹³⁷Cs traced erosional and depositional sites in mountain agroecosystems. *Catena* 181, 104058. <https://doi.org/10.1016/j.catena.2019.05.004>.
- Golchin, A., Oades, J.M., Skjemstad, J.O., Clarke, P., 1994. Study of free and occluded organic matter in soils by ¹³C CP/MAS NMR spectroscopy and scanning electron microscopy. *Aust. J. Soil Res.* 32, 285–309. <https://doi.org/10.1071/SR9940285>.
- Gretter, A., Ciolli, M., Scolozzi, R., 2018. Governing mountain landscapes collectively: local responses to emerging challenges within a systems thinking perspective. *Landscape Research* 43 (8), 1117–1130. <https://doi.org/10.1080/01426397.2018.1503239>.
- Guo, L.B., Gifford, R.M., 2002. Soil carbon stocks and land use change: a meta-analysis. *Glob. Change Biol.* 8 (4), 345–360. <https://doi.org/10.1046/j.1354-1013.2002.00486.x>.
- Hostert, P., 2010. The Carpathian mountains in transformation. *Mountain Research Initiative News Letter* 5, 6e8.
- Iovienu, P., Alfani, A., Bååth, E., 2010. Soil microbial community structure and biomass as affected by *Pinus pinea* plantation in two Mediterranean areas. *Appl. Soil Ecol.* 45, 56–63. <https://doi.org/10.1016/j.apsoil.2010.02.001>.
- IUSS Working Group WRB, 2015.
- Jackson, R.B., Banner, J.L., Jobbagy, E.G., Pockman, W.T., Wall, D.H., 2002. Ecosystem carbon loss with woody plant invasion of grasslands. *Nature* 418, 623–626. <https://doi.org/10.1038/nature00910>.
- Jaconi, A., Poeplau, C., Ramirez-Lopez, L., Van Wesemael, B., Don, A., 2019. Log-ratio transformation is the key to determining soil organic carbon fractions with near-infrared spectroscopy. *Eur. J. Soil Sci.* 70, 127–139. <https://doi.org/10.1111/ejss.12761>.
- Jongman, R.H.G., 2002. Homogenisation and fragmentation of the European landscape: Ecological consequences and solutions. *Landscape Urban Plan.* 58 (2–4), 211–221. [https://doi.org/10.1016/S0169-2046\(01\)00222-5](https://doi.org/10.1016/S0169-2046(01)00222-5).
- Khorchani, M., Gaspar, L., Nadal-Romero, E., Arnáez, J., Lasanta, T., Navas, A., 2022. Effects of cropland abandonment and afforestation on soil redistribution in a small Mediterranean mountain catchment. *Int. Soil Water Conserv. Res.* <https://doi.org/10.1016/j.iswcr.2022.10.001>.
- Kozak, J., Ostapowicz, K., Szablowska-Midor, A., Widacki, W., 2004. Land abandonment in the western Beskidy Mts and its environmental background. *Ekologia Bratislava* 23 (1), 116e26.
- Kuemmerle, T., Hostert, P., Radeloff, V.C., van der Linden, S., Perzanowski, K., Kruhlov, I., 2008. Cross-border comparison of post-socialist farmland abandonment in the Carpathians. *Ecosystems* 11 (4), 614e28. <https://doi.org/10.1007/s10021-008-9146-z>.
- Lambin, E.F., Turner, B.L., Geist, H.J., Agbola, S.B., Angelsen, A., Bruce, J.W., Coomes, O.T., Dirzo, R., Fischer, G., Folke, C., George, P.S., Homewood, K., Imbernon, J., Leemans, R., Li, X., Moran, E.F., Mortimore, M., Ramakrishnan, P.S., Richards, J.F., Skanes, H., Steffen, W., Stone, G.D., Svedin, U., Veldkamp, T.A., Vogel, C., Xu, J., 2001. The causes of land-use and land cover change: moving beyond the myths. *Glob. Environ. Change* 11, 261–269. [https://doi.org/10.1016/S0959-3780\(01\)00007-3](https://doi.org/10.1016/S0959-3780(01)00007-3).
- Lasanta-Martínez, T., 1988. The process of desertion of cultivated areas in the central Spanish Pyrenees. *Pyrenees* 132, 15–36.
- Lasanta, T., Arnáez, J., Oserin, M., Ortigosa, L., 2001. Marginal lands and erosion in terraced fields in the Mediterranean mountains: a case study in the Camero Viejo (Northwestern Iberian System, Spain). *Mt. Res. Dev.* 21 (1), 69e76.
- Lasanta-Martínez, T., Vicente-Serrano, S.M., Cuadrat-Prats, J.M., 2005. Mountain Mediterranean landscape evolution caused by the abandonment of traditional primary activities: a study of the Spanish Central Pyrenees. *Appl. Geogr.* 25, 47–65. <https://doi.org/10.1016/j.apgeog.2004.11.001>.
- Lasanta, T., Nadal-Romero, E., García-Ruiz, J.M., 2016. Clearing shrubland as a strategy to encourage extensive livestock farming in the Mediterranean mountains. *Geographical Research Letters* 45 (2), 487–513.
- Lasanta, T., Arnáez, J., Pascual, N., Ruiz-Floño, P., Errea, M.P., Lana-Renault, N., 2017. Space-time process and drivers of land abandonment in Europe. *Catena* 149 (3), 810–823. <https://doi.org/10.1016/j.catena.2016.02.024>.
- Lasanta, T., Arnáez, J., Nadal-Romero, E., 2020. Soil degradation, restoration and management in abandoned and afforested lands. *Adv. Chem. Pollut. Environ. Manage. Protect.* 4, 71–117. <https://doi.org/10.1016/bs.apmp.2019.07.002>.
- Lasanta, T., Nadal-Romero, E., Khorchani, M., Romero-Díaz, A., 2021. Una revisión sobre las tierras abandonadas en España: de los paisajes locales a las estrategias de gestión. *Geograph. Res. Lett.* 47 (2), 477–521.
- Lavallee, J.M., Soong, J.L., Cotrufo, M.F., 2020. Conceptualizing soil organic matter into particulate and mineral-associated forms to address global change in the 21st century. *Glob. Change Biol.* 26 (1), 261–273. <https://doi.org/10.1111/gcb.14859>.

- Li, D., Niu, S., Luo, Y., 2012. Global patterns of the dynamics of soil carbon and nitrogen stocks following afforestation: a meta-analysis. *New Phytol.* 195 (1), 172–181. <https://doi.org/10.1111/j.1469-8137.2012.04150.x>.
- Li, J., Shanguan, Z., Deng, L., 2022. Free particulate organic carbon plays critical roles in carbon accumulations during grassland succession since grazing exclusion. *Soil Tillage Res.* 220, 105380 <https://doi.org/10.1016/j.still.2022.105380>.
- Lizaga, I., Quijano, L., Gaspar, L., Ramos, M.C., Navas, A., 2019. Linking land use changes to variation in soil properties in a Mediterranean mountain agroecosystem. *Catena* 172, 516–527. <https://doi.org/10.1016/j.catena.2018.09.019>.
- López-Moreno, J.L., Vicente-Serrano, S.M., Morán-Tejada, E., Zabalza, J., Lorenzo-Lacruz, J., García-Ruiz, J.M., 2011. Impact of climate evolution and land use changes on water yield in the Ebro basin. *Hydrol. Earth Syst. Sci.* 15, 311–322. <https://doi.org/10.5194/hess-15-311-2011>.
- Malhotra, A., Abramoff, R., Hanson, P., Harden, J., Hicks Priess, C., Jackson, R.,... Sulman, B., 2018. The persistence of root carbon in soil: data and modeling gaps. AGU Fall Meeting Abstracts. 2018AGUFM.B13D..02M.
- Martín-Peinado, F.J., Bruno-Navarro, F., Jiménez, M.N., Sierra, M., Martínez, F.J., Romero-Freire, A., Rojo, L., Fernández-Ondoño, E., 2016. Long-term effects of Pine Plantations on Soil quality in southern Spain. *Land Degrad. Dev.* 27 (7), 1709–1720. <https://doi.org/10.1002/ldr.2566>.
- Mottet, A., Ladet, S., Coqué, N., Gibon, A., 2006. Agricultural land-use change and its drivers in mountain landscapes: a case study in the Pyrenees. *Agric. Ecosyst. Environ.* 114, 296–310. <https://doi.org/10.1016/j.agee.2005.11.017>.
- Muñoz-Rojas, M., De la Rosa, D., Zavala, L.M., Jordán, A., Anaya-Romero, M., 2011. Changes in land cover and vegetation carbon stocks in Andalusia, Southern Spain (1956–2007). *Sci. Total Environ.* 409 (14), 2796–2806. <https://doi.org/10.1016/j.scitotenv.2011.04.009>.
- Nadal-Romero, E., Cammeraat, E., Pérez-Cardiel, E., Lasanta, T., 2016. Effects of secondary succession and afforestation practices on soil properties after cropland abandonment in humid Mediterranean mountain areas. *Agric. Ecosyst. Environ.* 228, 91–100. <https://doi.org/10.1016/j.agee.2016.05.003>.
- Nadal-Romero, E., Rubio, P., Kremyda, V., Absalah, S., Cammeraat, E., Jansen, B., Lasanta, T., 2021. Effects of agricultural land abandonment on soil organic carbon stocks and composition of soil organic matter in the Central Spanish Pyrenees. *Catena* 205, 105441. <https://doi.org/10.1016/j.catena.2021.105441>.
- Navas, A., Machín, J., Beguería, S., López-Vicente, M., Gaspar, L., 2008. Soil properties and physiographic factors controlling the natural vegetation re-growth in a disturbed catchment of the Central Spanish Pyrenees. *Agrofor. Syst.* 72 (3), 173–185. <https://doi.org/10.1007/s10457-007-9085-2>.
- Navas, A., Gaspar, L., Quijano, L., López-Vicente, M., Machín, J., 2012. Patterns of soil organic carbon and nitrogen in relation to soil movement under different land uses in mountain fields (South Central Pyrenees). *Catena* 94, 43–52. <https://doi.org/10.1016/j.catena.2011.05.012>.
- Oliveira, S., Pereira, J.M.C., San-Miguel-Ayaz, J., Lourenco, L., 2014. Exploring the spatial patterns of fire density in Southern Europe using Geographical Weighted Regression. *Appl. Geogr.* 51, 143–157. <https://doi.org/10.1016/j.apgeog.2014.04.002>.
- Padial-Iglesias, M., Ninyerola, M., Serra, P., González-Guerrero, O., Espelta, J.M., Pino, J., Pons, X., 2022. Driving forces of forest expansion dynamics across the Iberian Peninsula (1987–2017): A spatio-temporal transect. *Forest* 13, 475. <https://doi.org/10.3390/f13030475>.
- Palang, H., Helmfriid, S., Antrop, M., Alumäe, H., 2005. Rural landscapes: past processes and future strategies. *Landsc. Urban Plan.* 70, 3–8. <https://doi.org/10.1016/j.landurbplan.2003.10.001>.
- Paul, K.I., Polglase, P.J., Nyakuengama, J.G., Khanna, P.K., 2002. Change in soil carbon following afforestation. *For. Ecol. Manage.* 168 (1–3), 241–257. [https://doi.org/10.1016/S0378-1127\(01\)00740-X](https://doi.org/10.1016/S0378-1127(01)00740-X).
- Perpiña Castillo, C., Kavalov, B., Diogo, V., Jacobs-Crisioni, C., Batista e Silva, F., Lavalle, C., 2018. Agricultural land abandonment in the EU within 2015–2030. In: JRC Working Papers (No. JRC113718); Joint Research Centre: Ispra, Italy, pp. 1–7.
- Perpiña Castillo, C., Jacobs-Crisioni, C., Diogo, V., Lavalle, C., 2021. Modelling agricultural land abandonment in a fine spatial resolution multi-level land-use model: An application for the EU. *Environ. Modell. Softw.* 136, 104946 <https://doi.org/10.1016/j.envsoft.2020.104946>.
- Poelau, C., Don, A., 2013. Sensitivity of soil organic carbon stocks and fractions to different land-use changes across Europe. *Geoderma* 192, 189–201. <https://doi.org/10.1016/j.geoderma.2012.08.003>.
- Post, W.M., Kwon, K.C., 2000. Soil carbon sequestration and land-use change: processes and potential. *Glob. Change Biol.* 6, 317–328. <https://doi.org/10.1046/j.1365-2486.2000.00308.x>.
- Rawls, W.J., Ahuja, L.R., Brakensiek, D.L., Shirmohammadi, A., 1992. Infiltration and soil water movement. In: Maidment, D.R. (Ed.), *Handbook of Hydrology*. McGraw-Hill Inc, New York.
- Reichert, J.M., Gubiani, P.I., Rheinheimer dos Santos, D., Reinert, D.J., Aita, C., Giacomini, S.J., 2022. Soil properties characterization for land-use planning and soil management in watersheds under family farming. *Inter. Soil Water Conserv. Research* 10, 119–128. <https://doi.org/10.1016/j.iswcr.2021.05.003>.
- Rescia, A.J., Pons, A., Lomba, I., Esteban, C., Dover, J.W., 2008. Reformulating the social-ecological systems in a cultural rural mountain landscape in the Picos de Europa region (Northern Spain). *Landsc. Urban Plan.* 88, 23–33. <https://doi.org/10.1016/j.landurbplan.2008.08.001>.
- Rey Benayas, J.M., Martins, A., Nicolau, J.M., Schulz, J., 2007. Abandonment of agricultural land: an overview of drivers and consequences. *CAB Reviews, Perspectives in Agriculture, Veterinary Science, Nutrition and Natural Resources* 2, No 057.
- Rodríguez-Martín, J.A., Álvaro-Fuentes, J., Gonzalo-Jiménez, J., Gil de Carrasco, C., Ramos Miras, J.J., Grau Corbi, J.M., Boluda, R., 2016. Assessment of the soil organic carbon stocks in Spain. *Geoderma* 264 (Part A), 117–125. <https://doi.org/10.1016/j.geoderma.2015.10.010>.
- Rumpel, C., Kögel-Knabner, I., 2011. Deep soil organic matter—a key but poorly understood component of terrestrial C cycle. *Plant Soil* 338 (1), 143–158. <https://doi.org/10.1007/s11040-010-0391-5>.
- Sainepo, B.M., Gachene, C., Nyambura Karuma, A., 2018. Assessment of soil organic carbon fractions and carbon management index under different land use types in Olesharo Carchment, Narok County, Kenya. *Carbon Balance Manage.* 13 (1), 4. <https://doi.org/10.1186/s13021-018-0091-7>.
- Sanaullah, M., Afzal, T., Shahzad, T., Wakeel, A., 2019. Carbon Sequestration for Sustainable Agriculture. In: Farooq, M., Pisante, M. (Eds.), *Innovations in Sustainable Agriculture*. Springer, pp. 469–500.
- Sanderman, J., Baldock, J.A., Dangal, S.R., Ludwig, S., Potter, S., Rivard, C., Savage, K., 2021. Soil organic carbon fractions in the Great Plains of the United States: an application of midinfrared spectroscopy. *Biogeochemistry* 156, 1–18. <https://doi.org/10.1007/s10533-021-00755-1>.
- San Román-Sanz, A., Fernández, C., Mouillot, F., Ferrat, L., Istria, D., Pasquali, V., 2013. Long-term forest dynamics and land-use abandonment in the Mediterranean mountains, Corsica. *France. Ecol. Soc.* 18 (2), 38. <https://doi.org/10.5751/ES-05556-180238>.
- Schmidt, M.W.L., Rumpel, C., Kögel-Knabner, I., 1999. Evaluation of an ultrasonic dispersion procedure to isolate primary organomineral complexes from soils. *Eur. J. Soil Sci.* 50, 87–94. <https://doi.org/10.1046/j.1365-2389.1999.00211.x>.
- Sciubba, L., Mazzon, M., Cavani, L., Baldi, E.L., Toselli, M., Ciavatta, C., Marzadori, C., 2021. Soil response to agricultural land abandonment: A case study of a vineyard in Northern Italy. *Agronomy* 11, 1841. <https://doi.org/10.3390/agronomy11091841>.
- Segura, C., Navarro, F.B., Jiménez, M.N., Fernández-Ondoño, E., 2020. Implications of afforestation vs. Secondary succession for soil properties under a semiarid climate. *Sci. Total Environ.* 704, 135393 <https://doi.org/10.1016/j.scitotenv.2019.135393>.
- Sluis, T.V.D., Kizos, T., Pedrolí, B., 2014. Landscape change in Mediterranean farmlands: impacts of land abandonment on cultivation terraces in Portofino (Italy) and Lesvos (Greece). *Landsc. Ecol.* 7 (1), 23–44. <https://doi.org/10.2478/jlecol-2014-0008>.
- Sluiter, R., De Jong, S.M., 2007. Spatial patterns of Mediterranean land abandonment and related land cover transition. *Landsc. Ecol.* 22, 559–576. <https://doi.org/10.1007/s10980-006-9049-3>.
- Srijker, D., 2005. Marginal lands in Europe—causes of decline. *Basic Appl. Ecol.* 6, 99–106. <https://doi.org/10.1016/j.baee.2005.01.001>.
- Taillefumier, F., Piégay, H., 2003. Contemporary land use changes in Prealpine Mediterranean mountains: a multivariate GIS-based approach applied two municipalities in the Southern French Prealps. *Catena* 51, 267e96. [https://doi.org/10.1016/S0341-8162\(02\)00168-6](https://doi.org/10.1016/S0341-8162(02)00168-6).
- Trigalet, S., Gabarrón-Galeote, M.A., Van Oost, K., van Wesemael, B., 2016. Changes in soil organic carbon pools along a chronosequence of land abandonment in southern Spain. *Geoderma* 268, 14–21. <https://doi.org/10.1016/j.geoderma.2016.01.014>.
- van der Zanden, E.H., Verburg, P.H., Schulp, C.J., Verkerk, P.J., 2017. Trade-offs of European agricultural abandonment. *Land Use Pol.* 62, 290–301. <https://doi.org/10.1016/j.landusepol.2017.01.003>.
- Van Dijk, G.A., Zelanowicz, A., Blokzijl, R. (Eds.), 2004. Land abandonment, biodiversity and the CAP. In: Land abandonment and biodiversity in relation to the 1st and 2nd pillars of the EU's Common Agricultural Policy: outcome of an international seminar in Sigulda, Latvia, 7e8 October, 2004. DLC, Government Service for Land and water management, Utrecht, The Netherlands; 2005.
- Van Hall, R.L., Cammeraat, L.H., Keesstra, S., Zorn, M., 2017. Impact of secondary vegetation succession on soil quality in a humid Mediterranean landscape. *Catena* 149, 836–843. <https://doi.org/10.1016/j.catena.2016.05.021>.
- Van Vliet, J., de Groot, H.L.F., Rietveld, P., Verburg, P.H., 2015. Manifestations and underlying drivers of agricultural land use change. *Landsc. Urban Plan.* 133, 24–36. <https://doi.org/10.1016/j.landurbplan.2014.09.001>.
- Varela, E., Pulido, F., Moreno, G., Zavala, M.A., 2020. Targeted policy proposals for managing spontaneous forest expansion in the Mediterranean. *J. Appl. Ecol.* 57, 2373–2380. <https://doi.org/10.1111/1365-2664-13779>.
- Verburg, P.H., van Berkel, D.B., van Doorn, A.M., van Eupen, M., van der Heiligenberg, H.A.R.M., 2007. Trajectories of land use change in Europe: a model-based exploration of rural futures. *Landsc. Ecol.* 25 (2), 217–232. <https://doi.org/10.1007/s10980-009-9347-7>.
- Veysset, P., Bebin, D., Lherm, M., 2005. Adaptation to Agenda 2000 (CAP reform) and optimization of the farming system of French suckler cattle farms in the Charolais area: a model-based study. *Agric. Syst.* 83 (2), 179–202. <https://doi.org/10.1016/j.agsy.2004.03.006>.
- Wei, J., Cheng, J., Li, W., Liu, W., 2012. Comparing the effect of naturally restored forest and grassland on carbon sequestration and its vertical distribution in the Chinese Loess Plateau. *PLoS One* 7, e40123.
- Wertebach, T.M., Hölzel, N., Kämpf, I., Urtvea, A., Tupitsin, S., Kiehl, K., Kamp, J., Kleinebecker, T., 2017. Soil carbon sequestration due to post-Soviet cropland abandonment: estimates from a large-scale soil organic carbon field inventory. *Glob. Change Biol.* 23, 3729–3741. <https://doi.org/10.1111/gcb.13650>.
- Yaşar Korkanç, S., 2014. Effects of afforestation on soil organic carbon and other properties. *Catena* 123, 62–69. <https://doi.org/10.1016/j.catena.2014.07.009>.
- Yin, H., Brandão, A., Buchner, J., Helmers, D., Iuliano, B.G., Kimambo, N.E., Lewińska, K.E., Razenkova, E., Rizayeva, A., Rogova, N., Spawn, S.W., Xie, Y., Radeloff, V.C., 2020. Monitoring cropland abandonment with Landsat time series. *Remote Sens. Environ.* 246, 111873 <https://doi.org/10.1016/j.rse.2020.111873>.

- Zhang, M., Li, G., He, T., Zhai, T., Guo, A., Chen, H., Wu, C., 2023. Reveal the severe spatial and temporal patterns of abandoned cropland in China over the past 30 years. *Sci. Total Environ.* 857, 159591 <https://doi.org/10.1016/j.scitotenv.2022.159591>.
- Zhang, Z., Duan, J., Wang, S., Luo, C., Chang, X., Zhu, X., Xu, B., Wang, W., 2012. Effects of land use and management on ecosystem respiration in alpine meadow on the Tibetan plateau. *Soil Tillage Res.* 124, 161–169. <https://doi.org/10.1016/j.still.2012.05.012>.
- Zornoza, R., Mataix-Solera, J., Guerrero, C., Arvenegui, C., Mataix-Beneyto, J., 2009. Comparison of soil physical, chemical, and Biochemical properties among native forest, maintained and abandoned almond orchards in Mountainous areas of Eastern Spain. *Arid Land Res. Manag.* 23 (4), 267–282. <https://doi.org/10.1080/15324980903231868>.