

Fall 1995

Northeastern News- Fall 1995

Lisa J. Quinn

Follow this and additional works at: <https://neiudc.neiu.edu/neiunews>

Recommended Citation

Quinn, Lisa J., "Northeastern News- Fall 1995" (1995). *NEIU News*. 46.
<https://neiudc.neiu.edu/neiunews/46>

This Book is brought to you for free and open access by the Publications at NEIU Digital Commons. It has been accepted for inclusion in NEIU News by an authorized administrator of NEIU Digital Commons. For more information, please contact neiudc@neiu.edu.

Acting President Steinberg Addresses University Community

"We have a great story to tell; with each other's help, we will strengthen avenues of support and contribute to expanding opportunities for Northeastern students."

As I undertake the duties of acting president, I am aware of the many challenges and opportunities that we face at Northeastern. The 1995 summer report by the American Council on Education identified issues affecting all American colleges, big and small, teaching and research institutions alike. Among the common issues are the need for assessment of student learning, improving orientation of students to the college experience, developing multicultural approaches, taking full advantage of computers as a support for learning, and broadening the international dimension of the curriculum. Northeastern is actively engaged in these initiatives. We will build on the strengths of our faculty and staff as we continue to develop these areas.

A public regional comprehensive university such as Northeastern enjoys a distinct advantage in today's society. We are known for our emphasis on teaching. We believe that research and scholarship inform and strengthen teaching. Northeastern faculty are encouraged to work closely with students. For example, we just completed the first year of a three-year program designed to increase the number of minority students who enter graduate schools and seek academic careers in mathematics, the sciences, and engineering.

This partnership is funded by the U.S. Department of Education Fund for the Improvement of Postsecondary Education and is based at the University of Iowa. Northeastern is one of six participating universities. Northeastern student Freddie Morales and Dr. Zhonggang Zeng of our Department of Mathematics spent their summer in the program at the University of Iowa. On his return to campus, Dr. Zeng said that he enjoyed a great opportunity for intensive research and formed relationships with well-known scholars in his field. Freddie Morales did an excellent job; his Iowa faculty advisor was very pleased with his work.

I am heartened by the creative enthusiasm and talent that is so evident in the Northeastern community. I have cherished my role as professor of history no less than my position as provost. As acting president, I look forward to the opportunity to talk about the successes of our alumni, students, and faculty to legislators, outside organizations, community members, and to the general public. We have a great story to tell; with each other's help, we will strengthen avenues of support and contribute to expanding opportunities for Northeastern students.

Sincerely,

Salme H. Steinberg

Salme H. Steinberg
Acting President



Governor Names New Board of Trustees

For the first time in its history, Northeastern Illinois University will welcome its own Board of Trustees. The newly appointed six-year term board will replace the Board of Governors effective January 1, 1996.

"We are delighted with the Governor's appointments for Northeastern," says Acting President Salme H. Steinberg. "We welcome back some familiar faces and look forward to introducing some new trustees to our campus."

The seven new board members are **Carole Balzekas** of Chicago, a co-owner and general manager of an automobile sales company; **Keith Brown** of Naperville, President of First Midwest Bank in Joliet; **Ed Dykla** of Chicago, National President of the Polish Roman Catholic Union of America; **Daniel Goodwin** of Oak Brook, Chairman and CEO of INLAND Company; **Nancy Masterson** of Barrington, Chairman and CEO of Moose Lodge Ltd.; **Luz Maria Solis** of Chicago, an early childhood education facilitator for the Chicago Public Schools; and **Willie Taylor** of Chicago, Vice President of Sonicraft Inc.

Luz Maria Solis and Willie Taylor are current trustees of the Board of Governors Universities. Daniel Goodwin is a former BGU trustee and Northeastern alumnus. Keith Brown is also an alumnus.

Steinberg says her administration will meet with the new trustees before January to familiarize them with Northeastern's programs and services and issues facing the university.

"This is an exciting time for all Illinois public universities," commented Steinberg. "The challenges that face higher education in quality, affordability, and access are among the issues that we and our new board will be working on."

Under the new system, the services provided by the Board of Governors Universities, such as bargaining, lobbying, risk management and legal services will be furnished by each university's board or by the hiring of additional personnel.

College of Education Pilots Structural Reorganization

Northeastern's College of Education is piloting a structural reorganization. The reorganization is the culmination of nearly two years of work exploring structural options that would best support achievement of the College's goals. It is one of the outcomes of a total quality management initiative to improve all aspects of the College through implementation of a continuous improvement process.

According to Michael Carl, dean of the College, "We are not simply moving programs and personnel around. We're attempting to react to the criticism that colleges of education across the country have not responded to changing education needs. In restructuring our College, we are striving to create an environment that will support collaboration, joint inquiry, and innovative teaching and at the same time allow for the flexibility to meet demands for change."

The functions within the structural reorganization fall into three divisions: 1) teacher education, 2) professional support, and 3) leadership, adult and community education. Each of the existing College of Education programs has been designated to operate in the division which best matches its function. For example, the early childhood and elementary education programs are part of the teacher education division, while the guidance and counseling program is part of the professional support division.

During the 1995-96 academic year, the reorganization changes will be only structural in nature. The programs and courses of study being

Continued on page 2

NEIU Foundation Honors Evangeline Gouletas



The NEIU Foundation Board of Directors hosted its Eighth Annual Recognition Dinner on Saturday, June 17, 1995 at the Ritz-Carlton Hotel in Chicago. The Foundation paid tribute to alumna Evangeline Gouletas, Co-Chairman of American Invsco Corp. The First Lady of the United States, Hillary Rodham Clinton, served as the Honorary Chairman.

Over 420 guests attended the gala event which netted \$55,000 to support minority scholarships and faculty research and scholarly projects. Highlights of the evening's entertainment included performances by Chicago entertainer Jimmy Damon and world renown opera singer Bill Sava, and both live and silent auctions.

Each year the Foundation recognizes an individual for his or her outstanding contributions to support the advancement of education.

Counselor Ed Dinner A Gathering of Friends

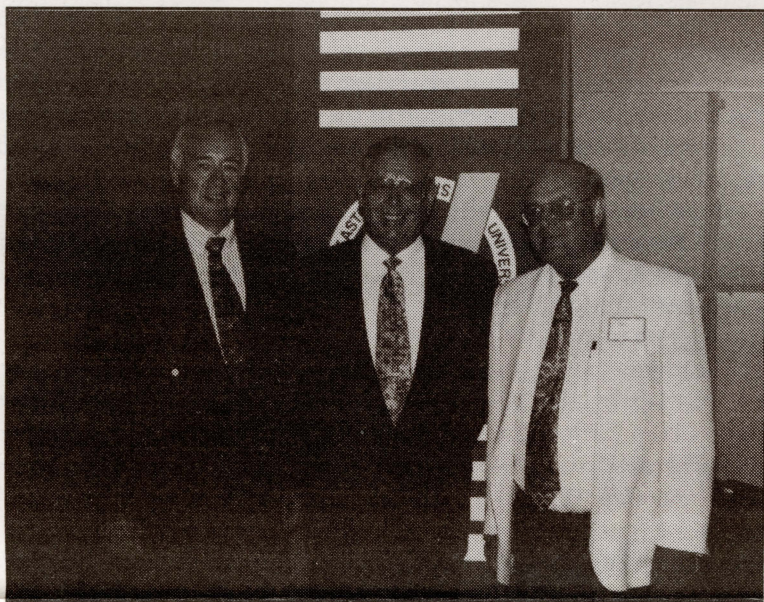
The Department of Counselor Education hosted a retirement dinner on July 21, 1995 for Dr. Noah Inbody, Dr. Edward Brogly, and Dr. Francis Vogel. Approximately 160 guests came to honor the three retirees. Dr. Inbody had been with Northeastern for 18 years and focused his teaching on group and individual counseling skills, as well as chemical dependency.

Dr. Brogly had been at Northeastern for 24 years and contributed to the development and teaching of career counseling in the schools and stress management. Dr. Vogel had been with Northeastern for 27 years, beginning in the Department of Curriculum and Instruction and later in Counselor Education. He contributed to the school sequence and in teaching research.

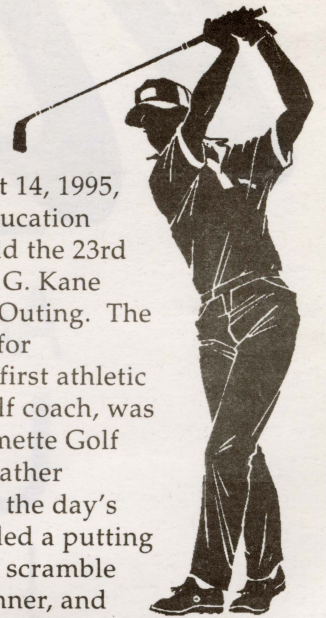
A musical presentation, created and directed by Dr. Nan Giblin, associate dean for the College of Education and faculty member of the Counseling Department, highlighted the retirees' areas of expertise and contributions. Faculty, students, and alumni participated in the musical.

Dr. Linda Keel, chair of the Counselor of Education Department, said of their retirement, "Their departure has left some significant gaps that we're trying to reconfigure." To fill these gaps, two full-time, tenure track positions have been filled by Dr. Lee Beaty and Dr. Mei Chen. Dr. Beaty has been a visiting lecturer at Northeastern for the past two years. Dr. Chen is a recent graduate of Counselor Psychology at the University of Indiana.

While Dr. Inbody's initial retirement time is used for travel, Drs. Brogly and Vogel are teaching fall classes at neighboring universities.



1995 Charles G. Kane Outing



On August 14, 1995, the Physical Education Department held the 23rd annual Charles G. Kane Memorial Golf Outing. The outing, named for Northeastern's first athletic director and golf coach, was held at the Wilmette Golf Course. The weather cooperated and the day's activities included a putting contest, 18-hole scramble tournament, dinner, and raffle of excellent prizes.

One hundred and fifty-six golfers participated, including alumni, students, faculty, and staff, as well as representatives from the community and various businesses. Prizes were awarded to the top foursomes in the women's, men's, and mixed divisions. In addition, prizes were awarded for the longest drives and closest to the pin on all par 3 holes.

Thousands of dollars worth of prizes (hotel packages, sports equipment, boat rides, dinners, sporting event tickets, theater tickets, etc.) were raffled to raise money for the Charles G. Kane Scholarship Fund. The '95 tournament broke all records for attendance. The success of this year's outing allows us to continue awarding the outstanding male and female Physical education majors of the year award.

The Department of Health, Physical Education, and Recreation extends its thanks to all who attended the festivities and supported the outing.

We are already looking forward to next year and guarantee another great day of fun!

2

NEWS is published twice a year by the Office of Alumni Affairs for graduates, staff, and friends. All news items should be addressed to NEWS, Office of Alumni Affairs, Northeastern Illinois University, 5500 N. St. Louis Avenue, Chicago, Illinois 60625-4699.

Editor: Lisa J. Quinn, Acting Director of Alumni Affairs

Associate Editor: Terry Katz, University Relations
Assistant Editor: Marianne Shimkus, Alumni Affairs

Design Editor: Boshra Abo-Saif, Photo/Design/Graphics

University Administration

Salme H. Steinberg
Acting President

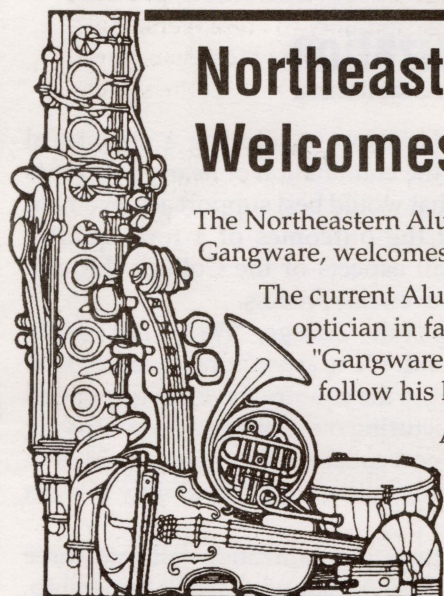
Therese Schuepfer
Acting Provost

Donn H. Bichsel
Vice President for Development and Public Affairs

Melvin C. Terrell
Vice President for Student Affairs

Peter C. Wollstein
Vice President for Administrative Affairs

Northeastern Illinois University subscribes to the principle of affirmative action and does not discriminate against any individual on the basis of age, color, handicap, national origin, race, religion, sex, or veteran status.



Northeastern Alumni & Friends Band Welcomes New Members

The Northeastern Alumni Band, organized in 1978 by the late Professor Edward Gangware, welcomes new members.

The current Alumni Band Director, Maris Sternberg (BA, 1969), who is an optician in family practice and a national powerlifting champion stated, "Gangware was well loved by alumni. It is a great honor for me to follow his legacy as the conductor of the alumni band."

Alumni and community members interested in participating are welcome to join anytime; auditions are not necessary. The band practices on Monday evenings from 7:30 to 9:30 p.m. at Greenbriar Park, 2750 W. Peterson in Chicago.

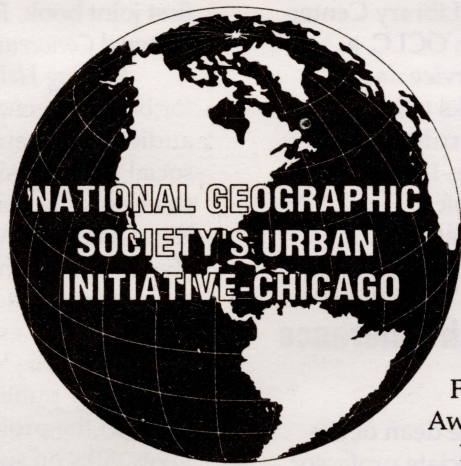
College of Education

Continued from page 1

pursued by students will remain the same. The 1996-97 academic year will then be a transitional year in which the curriculum of all programs in the College will be reviewed beginning with the teacher education and educational leadership

programs. Said Dean Carl, "We have begun implementation of a comprehensive plan to improve all aspects of the College. The structural reorganization will provide the support system necessary to help us achieve that goal."

College Happenings



Earth is becoming more crowded, the environment more threatened, natural resources more depleted, the global economy more competitive, and world events more interconnected. Confronting these challenges requires an understanding of geography.

The National Geographic Society is sponsoring a two-year project designed to improve and expand geography education in urban areas, and Chicago was selected as one of the target cities. The project's leadership comes from a team of Chicago Public School teachers who were trained as Geography Consultants at a three week institute for professors of geography in the Chicago area, and representatives of local institutions with an interest in the project's goals. Dr. Barbara

Winston, professor and chair of Geography and Environmental Studies will direct the project. Components of this program include: Family Geography Challenge Workshops, "Geography is Fun" program, Geography Awareness Week November 12-18, and a National

Geographic Society Geography Bee. Also as part of this initiative, a two-week Summer Geography Institute will be held in July, 1996, with geography content lectures, field trips, hands-on teaching strategies, free materials, lesson plans, stipends, optional graduate credit, and more.

Call Dr. Barbara Winston, at (312) 794-2609 to be kept informed about this exciting project.

Fifth Beginning Teacher Program

The Beginning Teacher Program is made up of teachers in their first or second year of teaching and recent graduates of Northeastern's education programs.

The program covers a wide range of topics that are relevant to the beginning teacher. They include classroom management, discipline, parental conferencing, learning styles, substitute tips, and other issues of importance. Principals, teachers, and professors add insight and "pearls of wisdom" to these topics.

The Beginning Teacher Program is an excellent opportunity to network, establish resources, share ideas, and ask questions.

Meetings will be held on specified Saturdays from 9:30 - 11:30 a.m. in the Science Building, room S113 (location may vary). Anyone interested in attending should contact Dr. Janet Bercik at (312) 583-4050, extension 5151, or Dr. Sharon McNeely at extension 2788 for further information.

HOMECOMING 1996 - Soaring and Scoring!

Please join us in celebration of Homecoming 1996. The following activities are scheduled for January 19-20, 1996. For further Homecoming activities and information contact the Office of Alumni Affairs (312) 794-2892.

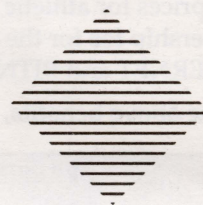
Friday, January 19, Alumni Hall
DANCE - D.J. with light show
8:30 p.m. - midnight

Saturday, January 20, Physical Education Complex

OPEN GYM for families from 10:00-11:00 a.m.
swimming, basketball, racquetball, volleyball

CHILDREN'S SHOW
11 a.m. - noon

GOLDEN EAGLE BASKETBALL
NEIU vs Western Illinois University
women: noon. men 3:00 p.m.
Food court alumni reception



3

CAREER CORNER

Multicultural Job Fair

DePaul University will host a Multicultural Job Fair on January 5, 1996. A variety of employers from the Chicagoland area will be present to answer your questions. Resumes of pre-registered students will be made available to participating companies. There is a \$5.00 advance registration fee (\$10.00 at the door) due by December 22. Checks are payable to DePaul University. You may submit your registration fee and resume to the NEIU Placement Office located in the Sachs Administration Building, room C-330, or send to: Mr. Jeff Clark, Director of Job Fairs, Career Development Center, DePaul University, 2320 N. Kenmore Avenue, Room 192, Chicago, IL 60614.

Alumni Needed To Help Students With Career Decisions

Join a group of alumni who have volunteered to share their career expertise with students and other alumni who are interested in exploring their professional area. The Alumni Career Information Service (ACIS), in its first year, has attracted NEIU alumni in areas such as banking, aerospace research, medicine, law, psychology, education, computer programming, business management, and human resource development. We want to expand the number of professional areas represented so we can provide the best career advising services possible to NEIU students and alumni.

We invite you to participate in this program. If you would like the opportunity to share your knowledge of the profession that you are in with an NEIU student or alumnus, please complete the attached form and send it to:

Information Request Form • Alumni Share Career

Name _____
Home Address _____
Home Phone (____) _____
Occupation _____
Organization _____
Business Address _____
Business Phone(____) _____

George Bagel
Assistant Director of Placement
Northeastern Illinois University
5500 N. St. Louis Avenue
Chicago, IL 60625-4699

Placement Services Offers Resume Expert System

Northeastern's Placement Office now has access to the Resume Expert System. The Resume Expert System provides students and alumni with quality, flexible resumes, eliminates manual files of student data sheets, provides pre-screening capability to employers, direct computer to fax referrals without handling paper, and an annual upgrade of the system to users.

Since the traditional on-campus recruiting has diminished greatly from the 1980's, placement offices nationwide have been sending more and more resumes to employers. The Resume Expert System will allow Northeastern's Placement Office to send many more resumes to employers than at any time in the past. One of the best features is that resumes can be printed and mailed or direct computer faxed to employers.

For a one time cost of \$35, a NEIU graduate can purchase the Resume Expert Program and built in tutorial/spellcheck disks. Graduates who are active in the database can request the Placement Office to furnish them with a list of employers where their resume has been sent. This service is available at no cost. For more information about Resume Expert or any other services offered by the Placement Office, call (312) 583-4050, extension 3119. The Placement Office hours are Monday-Wednesday 8:30 a.m.-7:00 p.m. and Thursday-Friday 8:30 a.m. - 5:00 p.m.

Congratulations!

Outstanding Faculty

Librarian of the Year at NEIU

Bradley Baker, Northeastern Illinois University Librarian/Media Services Director, was named Illinois Academic Librarian of the Year by the Illinois Library Association, and the Illinois Association of College and Research Libraries. The annual award honors an Illinois Librarian who contributes statewide to academic research and library development.

Baker was honored for his efforts toward the development of statewide library service for resource sharing, and the advancement of technology-related library services. He was also elected as delegate-at-large to the executive

committee of Ohio Computer Library Center (OCLC) for the 1995-1996 year. OCLC, a nonprofit computer library service and research organization, networks over 20,000 libraries in 61 countries and territories.

Baker received an M.A. in Library Science at the University of Chicago, an M.A. in American Studies at Northeastern, and a B.A. from Trinity College, Deerfield, Illinois.

Giblin and Bales Publish Reference Guide

Dr. Nan Giblin, associate dean of the College of Education and associate professor of Counselor Education and **Barbara Bales**, assistant professor/counselor of the office of the Dean of Students, have recently had their

first joint book, *Finding Help: A Reference Guide for Personal Concerns*, published.

Finding Help is an easy-to-read guidebook for both the general public and professional audience concerning a variety of psychological, social, and physical concerns. Among the chapter titles are: "Divorce, Single-Parenting, Remarriage," "Aging: Everybody does It," "Sexual Problems," and "Violence and Abuse."

Giblin, who is also an alumna of Northeastern, graduated with an M.A. in Guidance and Counseling in 1978. She has previously published numerous journal articles for both the professional and popular press and gives talks on such topics as grief, family counseling, and addiction. Giblin received her Ph.D. in Counseling Psychology from Loyola University.

Bales, prior to coming to Northeastern, worked in social service agencies in the public and private sector. Currently, she works with groups of returning students, coordinates student and parent orientation programs, and arranges alcohol and substance abuse programming. Bales received her master's from the University of Northern Colorado, and her bachelor's from Drake University.

Alumni Member Benefits

Through *NEWS* we are able to keep you abreast of university activities as well as news about fellow alumni. As an alumni member there are other benefits available to you. A year's membership in the University Alumni Club with a donation of \$25-\$49 enables you to receive:

- Access to the Ronald Williams Library with borrowing privileges
- Alumni and community outreach events
- Special ticket prices for concerts and theatre performances
- Free use of the Music Learning Resource Center
- The opportunity to participate in the University Chorus, Chamber Orchestra and Jazz Band
- Special ticket prices for athletic events
- Special membership fee for the use of the Physical Education Complex
- Access to INTERNET and BITNET through the University's Academic Computing facility

In addition to the above benefits, by joining one of the following clubs, you will receive:

HONOR ROLL \$500 OR MORE	PRESIDENT'S CLUB \$200 TO \$499	CENTURY CLUB \$100 TO \$199	GOLDEN EAGLES CLUB \$50 TO \$99
University Annual Report Invitations to University events Special gift Special donor event Luncheon on campus	University Annual Report Invitations to University events Special gift Special donor event	University Annual Report Invitations to University events Special gift	Invitations to University events

Your gift is used to benefit alumni programs and services, expand the Ronald Williams Library, promote university events and assist students who are in need of emergency financial support. Your gift can be designated for any of these programs or a specific department in the university. We hope you will support our 1995 Annual Fund and allow us to continue bringing you these and other quality programs in the future.

1995 Annual Fund

- | | |
|--|--|
| <input type="checkbox"/> Honor Roll \$500 or more | <input type="checkbox"/> Golden Eagles Club \$50 to \$99 |
| <input type="checkbox"/> President's Club \$200 to \$499 | <input type="checkbox"/> University Alumni Club \$25 to \$49 |
| <input type="checkbox"/> Century Club \$100 to \$199 | |

Enclosed is my/our gift of \$ _____

Name _____

Address _____

Telephone () _____

Credit Card Option: MasterCard Visa

Card # _____ Exp. Date _____

Signature _____

Please designate my gift for:

- | | |
|---|---|
| <input type="checkbox"/> Unrestricted | <input type="checkbox"/> Where the Need is Greatest |
| <input type="checkbox"/> Student Financial Assistance | <input type="checkbox"/> Faculty Development |
| <input type="checkbox"/> Alumni Programs | <input type="checkbox"/> Other _____ |

Your employer or spouse's employer may multiply your contribution.

- Matching gift form is enclosed.

Please make your check payable to: NEIU Foundation
Return to: NEIU Foundation, 5500 N. St. Louis Avenue, Chicago, IL 60625-4699

Outstanding Students and Alumni

Music Alumnus Honored

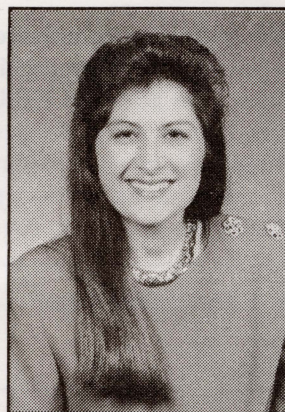
Alumnus baritone **Brian Kabat** was honored as a winner of the first annual Park Forest Singers collegiate vocal competition last June. Kabat received performance fees for solos in several works following the competition.

Kabat graduated with an M.A. in music and earned his B.A. in music from North Park College, Chicago. While a student at Northeastern, Kabat participated in opera productions, including singing leads. He is planning a career in opera.

Chem Major Receives Prestigious Award

Judie Reynolds, a senior and honor student in the Department of Chemistry, received the 1995 Chicago Chromatography Discussion Group's Undergraduate Research Scholarship Award. Reynolds was chosen from among students at 42 colleges.

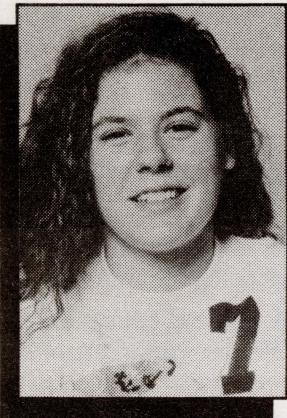
Reynolds, has co-authored two scientific publications with Dr. John Albazi associate professor of Chemistry and is the third student of his to be honored with this award in the last three years. Said Albazi of Reynolds, she is "one of my hardest working students. She is very determined, studying at least 15 hours a week for her research."



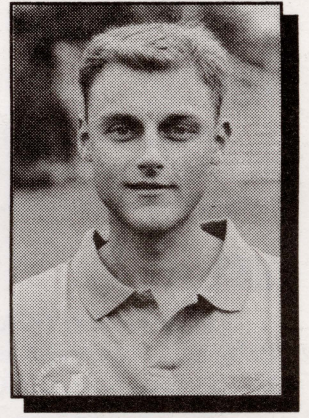
Alumna **Dr. Deborah Hockman** ('77, chemistry) was promoted to Vice President of Laboratory and Technical Services of Waste Management, Inc (WMI) on May 15, 1995. Dr. Hockman also serves as President of Environmental Monitoring

Laboratories, Inc. (EML), a wholly owned company of WMX Technologies, Inc.

Before joining WMI in 1987, Dr. Hockman's work experience included laboratory management positions for American Cyanamid and G.D. Searle/Monsanto. She initially served WMI as Assistant Laboratory Director and was promoted to President of EML in 1992.



Jennifer Maier
Sr. Volleyball player



Geoff Masanet
Head Coach
Cross Country

Golden Eagles Fall Sports Update

Volleyball

Eight newcomers join seniors Kara Burzinski and Jennifer Maier on the 1995 Golden Eagle volleyball team. Coach Kizzie Mailander's young team is struggling with an 0-14 record late in September. Last year the Golden Eagles finished with a 7-19 record and was third place in the Mid-Continent Conference West Division. The 1995 Mid-Continent Conference tournament will be held November 17-18. The site will be determined by the number one seed in the East Division.

Soccer

In its second season of NCAA Division I soccer, the Golden Eagles upset Northwestern University in Evanston 4-3 with a game winning goal by Jimmy Ferrando. NEIU is 1-7 overall and 0-3 in conference play. The team has lost five games by one goal in a very competitive regular season schedule.

Cross Country

First year coach Geoff Masanet has made huge strides with the cross country teams this fall. Dan Silva was awarded NEIU's first-ever

Mid-Continent Conference cross country runner-of-the-week honor for his fourth place overall finish at the UW-Milwaukee Invitational.

Still Looking Good After All Those Years - Alumni Return to Court and Field

Family and friends cheered on former volleyball players as they challenged the varsity Golden Eagles in a pre-season exhibition game at the Physical Education Complex.

Former Coach Betty Fields and over a decade of Golden Eagles worked together to defeat the current team by clinching the match in the fifth game. This is the fourth consecutive year that the alumni team has defeated the varsity.

All of the former players continue to compete through park district and beach volleyball leagues throughout the Chicagoland area. Golden Eagle baseball alumni joined forces on Sunday, September 24, to challenge the varsity squad in two seven inning games.

According to Head Coach Jim Hawrysko, "There was an outstanding turnout for the game as over 30 alumni returned. Many of the former Eagles continue playing in summer baseball leagues and are very competitive. It is a great reflection of our program and the university."

Despite strong pitching performances by the alumni, they were defeated by the scores of 6-1 and 9-4.

Attention

Former athletes who we were unable to reach, please contact the alumni office at (312) 794-2892 and update your record, so we can keep you informed of future alumni and Golden Eagle athletic events.

5

TBA - Spring Alumni Baseball Day

1995-1996 Schedule

Women's Basketball

Men's Basketball

Date	Opponent	Location	Time	Date	Opponent	Location	Time
Nov.25	Akron	Akron, OH	3:00 P.M.	Nov.15	Chicago Challengers	Home	7:00 P.M.
Nov.26	Loyola Marymount	Home	7:00 P.M.	Nov.20	Russian Spartak	Home	7:00 P.M.
Nov.29	DePaul	Away	7:00 P.M.	Nov.24	Miami (Fla.)	Miami, Fl	6:30 P.M.
Dec.5	St. Louis	Home	7:00 P.M.	Nov.26	Cardinal-Stritch Wis.	Home	4:00 P.M.
Dec.15	UW-Milwaukee	Home	5:30 P.M.	Nov.28	Univ. of Wisconsin	Madison, WI	7:00 P.M.
Dec.19	Ball State	Muncie, IN	7:00 P.M.	Dec.7	UW-Milwaukee	Milwaukee, WI	7:30 P.M.
Dec.29-30	Univ. of Houston Tournament	Houston, TX	TBA	Dec.9	Illinois-Chicago	UIC-Pavillion	7:00 P.M.
Jan.4	Valparaiso	Valparaiso, IN	5:15 P.M.	Dec.14	UW-Milwaukee	Home	7:00 P.M.
Jan.6	Troy State	Home	5:30 P.M.	Dec.16	Cal-State Northridge	Northridge, CA	9:00 P.M.
Jan.8	Central Connecticut	Home	5:30 P.M.	Dec.18	Univ. of Nebraska	Lincoln, NE	7:30 P.M.
Jan.13	Youngstown State	Youngstown, OH	5:15 P.M.	Jan.4	Valparaiso Univ.	Valparaiso, IN	7:30 P.M.
Jan.15	Buffalo	Buffalo, NY	6:00 P.M.	Jan.6	Troy State	Home	7:50 P.M.
Jan.20	Western Illinois	Home	12:00 P.M.	Jan.8	Central Connecticut	Home	7:50 P.M.
Jan.22	MO-Kansas City	Home	5:30 P.M.	Jan.13	Youngstown State	Youngstown, OH	7:30 P.M.
Jan.24	Eastern Illinois	Charleston, IL	5:00 P.M.	Jan.15	Buffalo	Buffalo, NY	6:30 P.M.
Jan.29	Chicago State	Away (CSU)	4:00 P.M.	Jan.20	Western Illinois	Home	3:00 P.M.
Feb.3	Central Connecticut	New Britain, CT	1:00 P.M.	Jan.22	MO-Kansas City	Home	7:50 P.M.
Feb.5	Troy State	Troy, AL	5:30 P.M.	Jan.24	Eastern Illinois	Charleston, IL	7:30 P.M.
Feb.10	Buffalo	Home	5:30 P.M.	Jan.29	Chicago State	Chicago, IL	7:30 P.M.
Feb.12	Youngstown State	Home	5:30 P.M.	Feb.3	Central Connecticut	New Britain, CT	7:00 P.M.
Feb.17	MO-Kansas City	Kansas City, MO	2:00 P.M.	Feb.5	Troy State	Troy, AL	7:30 P.M.
Feb.19	Western Illinois	Macomb, IL	5:30 P.M.	Feb.10	Buffalo	Home	7:50 P.M.
Feb.24	Chicago State	Home	5:30 P.M.	Feb.12	Youngstown State	Home	7:50 P.M.
Feb.26	Valparaiso	Home	5:30 P.M.	Feb.17	MO-Kansas City	Kansas City, MO	7:30 P.M.
Feb.28	Eastern Illinois	Home	5:30 P.M.	Feb.19	Western Illinois	Macomb, IL	7:30 P.M.
Mar.3-5	Mid-Continent Conference	Site-TBA	TBA	Feb.24	Chicago State	Home	7:50 P.M.
				Feb.26	Valparaiso	Home	7:50 P.M.
				Feb.28	Eastern Illinois	Home	7:50 P.M.

Head Coach: Denise Taylor

Head Coach: Rees Johnson

To order Golden Eagle basketball season tickets contact: NEIU Athletic Ticket Office at (312) 794-6128

Class Notes

1961

Paula Nichols (B.A./social science; 1971, M.A./social science) is vice president of Sterling Companies in Houston, TX.

1963

Inez Garber (B.A./elementary education; 1976, M.A./counselor education) is principal of McCutcheon School in Chicago.

Pamela Gillet (B.A./elementary education; 1966, M.A./special education) received the Harry Selznik award in July for being named the year's most outstanding special education administrator and also received the Contributor Award in April from the Council for Exceptional Children for her outstanding contributions to the field of special education. The Pamela K. Gillet Education Center in Arlington Heights was named in her honor in recognition of 18 years as superintendent of the special education district.

1964

Harold G. Kiehm (M.A./biology) is principal of Von Steuben Metro Science Center in Chicago.

Judy Kiehm (B.A./elementary education) is a teacher at Pilgrim Lutheran School in Chicago.

1966

Ralph Campagna (B.A./speech) is executive director of Off the Street Club, Chicago's oldest center for needy children.

Lynne A. McGurr (B.A./social science) is a sixth grade teacher for the Villa Park School District in Villa Park.

Dierdre Columbo (B.A./early childhood education) graduated with a M.A. in teaching and leadership from St. Xavier University in May 1994 and is currently a first grade teacher at Laurel Hill Elementary School in Hanover Park.

Alice Kosnik (B.A./elementary education) is a teacher for the Northbrook School District in Northbrook.

1967

Eleanor Nangle (B.A./elementary education) is a teacher for the Hawthorne Scholastic Academy in Chicago.

Marlene Kwasinski (B.A./mathematics) is a junior high school math teacher for the Archdiocese of Chicago.

1968

Vernon Jorgensen (B.S./natural science) is a systems analyst for the American Medical Association in Chicago.

A. Michael Drachler (B.S./biology) is chairman of the department of obstetrics and gynecology at Rush North Shore Medical Center in Skokie, IL and is assistant professor of obstetrics and gynecology at Rush Medical College in Chicago.

1969

Sheelagh McGurn (B.A./English; 1977, M.A./reading) is senior executive editor of Open Court Publishing Company in Chicago.

1970

Peter W. Ellermann (B.A./political science) has been promoted to principal of the professional services firm Ernst & Young in Chicago. Mr. Ellermann advises clients on sales force effectiveness and sales strategies and is also a change management specialist.

Claudia Gerard (B.A./English; 1991, M.A./special education) is a special education teacher at Stapleton School in Rio Rancho, NM.

Thomas L. Hilliard (B.A./music) is on the board of directors for the Chicago Federation of Musicians.

Joanna Zickefoose (B.A./English) is senior director of human resources for the Chicago and Northwestern Railway Company in Chicago.

1971

MaryAnn (Luka) Elwardt (B.A./early childhood education) is a special education teacher at McCormick School in Chicago.

Patricia A. Oakley (B.A./mathematics) is a math teacher at Fremd High School in Palatine.

Percy L. Smith (M.A./special education) is a teacher coordinator at Flower High School in Chicago.

Michael W. Dunkel (B.A./geography and environmental studies) is port director of customs for the United States Customs Service in Green Bay, WI.

1972

Daniel Creely (B.A./physical education) is a professor at Northeastern Illinois University.

Mary Kay Brandemore (B.A./social science) is director of guidance at Glenbard North High School in Carol Stream.

Bernice M. Bloom (B.A./sociology) is credit manager for Cherry Electrical Products in Waukegan.

Andrea M. Bartecki (B.A./history) is first vice president of Tucker Anthony in Chicago.

1973

Vicki Baba (B.A./psychology) received her M.B.A from the Lake Forest Graduate School of Management in June 1994 and is currently manager of employment and counseling for the Illinois Student Assistance Commission in Deerfield.

James Bonk (B.A./history; 1977, M.A./history) is sergeant of police for the Chicago Police Department.

Janet (Cox) Merkt (B.A./English) has recently completed her internship with a habitat restoration project in the coastal town of Melbourne Beach, FL. She is a research assistant for Marine Resources Council in Melbourne, FL.

Eileen Pennington (B.A./history) is a third grade teacher at Our Lady of the Westside Catholic School in Chicago.

1974

Terry Leo (B.A./special education) is regional director of industry sales for Northwest Airlines in Boston, MA.

Jon Miller (M.A./mathematics) is sergeant of police for the Streamwood Police Department in Streamwood.

Velmar Myers (B.A./history) is a human resource representative for ITW/Buildex in Itasca.

Janet Weeks (B.A./English) is copy manager for United Stationers in Des Plaines.

1975

Kathleen Brugger (M.A./special education) is an early childhood teacher for the Special Education District of Lake County.

Lewis Goldstein (M.A./special education) is a program teacher/coordinator for the educable mentally handicapped at New Trier High School.

Roger L. Bash (B.A./counselor education) is director of psychology/neuropsychology at Health South Treasure Coast Rehabilitation Hospital in Vero Beach, FL.

Bonnie (Yormark) Perkovich (B.A./English)

Let's Hear From You!

The Office of Alumni Affairs wants to keep track of your outstanding achievements, but we need your help. In order to improve our alumni programming, to spotlight alumni, and to recognize your accomplishments, we need additional information about you. Please assist our efforts by completing the information below and returning it to: **Northeastern NEWS**, Office of Alumni Affairs, Northeastern Illinois University, 5500 N. St. Louis Avenue, Chicago IL 60625-4699.

Name _____ Graduation Year _____

Address _____

City _____ State _____ Zip _____

Home Phone (____) _____

Social Security/Student I.D. Number _____

Place of Employment _____

Title _____

Address _____

City _____ State _____ Zip _____

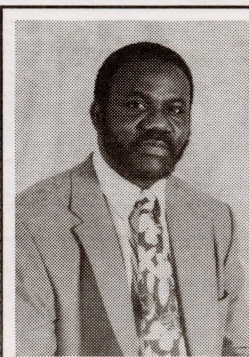
Business Phone (____) _____

() New address or name change. Tell us... _____

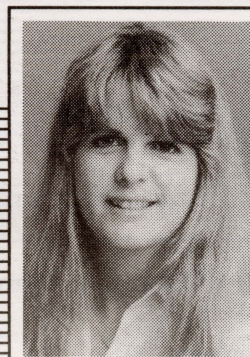
Note: If you have a recent photograph of yourself (black and white glossy), please send it. Sorry, photos cannot be returned.



Peter V. Ellerman
Class of '70



Samson E. Okeh
Class of '81



Monica Dailey
Class of '85



Virginia Ireland
Class of '86

is an agent and owner of State Farm Insurance located in Riverwoods.

Jennie L. Bunton (B.A./elementary education) teaches learning disabled children for the Chicago Board of Education.

1976

Mary Robertson (B.A./anthropology) is partner and general manager of Design Agency, Inc. in Elk Grove Village.

1977

Gerald R. Gems (B.A./physical education) is associate professor and chair of the health and physical education departments at North Central College in Naperville.

Susan Hemmens (B.A./art) has recently received her M.A. in art education from the University of Illinois, Champaign-Urbana and has been teaching kindergarten through fifth grade as an art teacher at May Watts Elementary School in Naperville, for the past seven years.

Thomas A. Klym (B.A./business and management) is president of Brillion and Klym Ltd. in Lincolnshire.

1978

Gail Anne Sullivan (M.A./English) is the general education diploma program coordinator at Oakton Community College.

Robert Papa (B.S./computer science) is systems development manager for Advantis in Chicago.

Susan Wallerstein (M.A./counselor education) is a guidance counselor at Wheeling High School in Wheeling.

1979

Beverly Ellstrand (B.A./University Without Walls) is an art instructor and seminar planner for Oakton Community College East. Ms. Ellstrand teaches intergenerational art classes and will be teaching a seminar "Visualizing your past for the future" in October. Currently, she is a curator for an exhibit celebrating the art of the Chicago society artists members "The 30's, 40's & 50's, a mid-century retrospective" at the Beacon Street Gallery in Chicago.

Eugen R. Ebrom (B.S./biology) is a staff pharmacist for United States Veterans Administration.

Dorothy N. (Wells) Williams (B.A./University Without Walls) is a career development specialist for Lawrence Hall Youth Services in Chicago.

1980

Monica Franco (B.A./language art) is a bilingual teacher at Smyser School in Chicago.

Sheryl (Lebovits) Pascoe (B.A./art) is a "mother-at-home" with daughter Jennifer after 12 years in the printing business as a graphic designer and typesetter.

Margaret Peterson (M.A./reading) is assistant superintendent and principal in the Norridge School District in Norridge.

Raphael Ramos (B.A./criminal justice) is sergeant of police for the Chicago Police Department.

Kurt Regensburger (B.A./environmental studies) is the owner of Security Self Storage Inc. in Knightdal, NC.

1981

Samson E. Okeh (B.A./ political science) is assistant manager at Cedars Sinai Medical Center in Los Angeles, CA.

1983

Pascuala Gonzalez-Casas (B.A./political science) is an adult educator at Daley College in Chicago.

Richard Hugh (B.A./business and management) is a financial consultant for Merrill Lynch in Beverly Hills, CA.

Phillip N. Yee (B.A./business and management) is lead auditor for MTI Vacations in Oak Brook.

1984

Paul Nordhaus (B.A./political science) is reserve assistance officer for the United States Air Force.

1985

Monica Dailey (B.S./earth science/ geography; 1994, M.S./earth science) is laboratory manager for the department of earth science at Northeastern.

Stephen Peters (B.A./anthropology) is an investigator for the State of Illinois Department of Children and Family Services in Chicago.

1986

Virginia (Milstead) Ireland (B.A./English) received a masters degree of Music Education from Vandercook College of Music in July 1993 and is currently a music teacher at Ward Middle School in Bolingbrook.

1987

Gene Gerstmeier (B.S./computer science) is a data processing operations manager at F & B Manufacturing Company in Chicago.

Marilyn G. Putz (M.A./counselor education) is a pet loss counselor at Lincolnshire Animal Hospital in Lincolnshire.

1988

Clyde Colgrove (M.A./education administration and supervision) is an executive director at Truman College Technical Institute in Chicago.

Mike Jones (B.A./music; 1990, M.A./reading) is an English teacher at Chaffey High School in Ontario, CA.

Mary Sunderland (B.S./accounting) is a budget analyst for the U.S. Department of Energy in Argonne.

1989

Yolanda Hammond (B.A./special education, elementary education) is a special education teacher at Stevenson School in Melrose Park.

Kenneth E. Huebner (M.A./education administration and supervision) is the English department chairman at Proviso East High School in Maywood.

Josef Mayer (B.S./computer science) is a systems analyst for Ameritech in Chicago.

1990

Andrew L. Howard (B.A./Board of

Governors) is a detective for the Illinois State Police Department.

Steve Brady Phillips (B.A./social science/secondary education) was a finalist for this year's Golden Apple Award in April and recently won the State Farm Insurance "Innovators in Education" award in May. In June he was awarded the Certificate of Commendation from Community High School District 218. Currently, he is a social studies teacher, the head coach of the scholastic bowl, and the strength and conditioning coordinator at Eisenhower High School in Blue Island.

Annette Rey-Soto (B.A./special education/elementary education) is a teacher at Dover Elementary School in Dover.

1992

Eamon Boyd (B.S./accounting) is a postal systems coordinator for the U.S. Postal Service in Carol Stream.

Sean M. Gudaitis (B.A./history) is a history teacher at Elk Grove High School in Elk Grove Village.

Terrence Jones (B.A./history/secondary education certification) is a teacher at Trumbull Elementary School in Chicago.

Philip C. Risch (B.A./English) is a freelance writer/editor, film and video producer in Denver, CO.

Steve Russo (B.S./computer science) is a computer operator for Ticketmaster in Chicago.

Russel "Rusty" Young (B.A./Spanish) is a buyer of Spanish materials and Bibles for Riverside Distributors in Iowa Falls, IA.

1993

Christine Stasiewicz (B.A./Board of Governors) is an HMO specialist for Glaxo, Inc. in Hoffman Estates.

1994

Robert E. Heinze (B.A./Board of Governors) is a patrolman for the City of Chicago Police Department.

Leah E. Isaacs (B.S./biology/psychology) has recently been accepted into the doctor of pharmacy program at the University of Illinois in Chicago.

Geri Kale-Smith (B.A./University without Walls) is operations manager for Lutheran General Hospital in Park Ridge and is currently a graduate student at the College of St. Francis where she is pursuing an M.S. in health services administration.

1995

Robert Irons (M.B.A./finance) will begin work on a doctorate in the area of production/operations management at the University of North Carolina, Chapel Hill, N.C. Mr. Irons was the first NEIU M.B.A student to do a master's thesis: "An Empirical Test of the Agency-Cost Theory of Dividend Policy."

Sirapat Polwittoon (M.B.A/business administration) will begin work on a Ph.D. in Finance at the University of Rhode Island in September, 1995.

Thank you to all the alumni who made this issue of News' Class Notes possible. We're looking forward to hearing from more alumni for our next issue of News.

Calendar of Events

All events take place at NEIU unless otherwise noted.

November

- 13 NEIU CONCERT BAND** 7:30 p.m., Auditorium
Directed by Jonathan Martin.
- 15 ELIZABETH QUAINANCE, SOPRANO—GRADUATE RECITAL** 7:30 p.m., Auditorium
- 17 NEIU CHORUS** 7:30 p.m., Bethany United Church of Christ
NEIU mini-series at Bethany United Church of Christ located at 4250 N. Paulina in Chicago.
- 18 RIENZI TRIO** 7:30 p.m., Bethany United Church of Christ
NEIU mini-series at Bethany United Church of Christ located at 4250 N. Paulina in Chicago.
- 20 NEIU ALUMNI BAND** 7:30 p.m., Auditorium
- 29 CONTEMPORARY MUSIC & TECHNOLOGY CONCERT** 7:30 p.m., Auditorium

December

- 5 STUDENT DANCE CONCERT** 1:45 p.m., Auditorium
- 6 VERMEER STRING QUARTET** 7:30 p.m., Anderson Chapel at North Park College
NEIU mini-series at Anderson Chapel at North Park College. Co-sponsored by Mostly Music, Inc. General Admission: \$10.00; Senior Citizens/Alumni \$5.00; Free to NEIU students, faculty, and staff.
- 6-9 STAGE CENTER REVUE** 7:30 p.m., Stage Center Theater
Skits, scenes, one-acts by students for students
General Admission: \$8.00; Senior Citizens/Alumni \$6.00; Free to NEIU students, faculty, and staff.
- 7 STUDENTS RECITAL** 2:00 p.m., Recital Hall A-131
- 7 & 8 TALES OF SPAIN—ENSEMBLE ESPAÑOL SPANISH DANCE THEATER** 10:30 a.m. & 11:45 a.m., Auditorium
General Admission: \$3.00.
- 8 & 9 ENSEMBLE ESPAÑOL SPANISH DANCE THEATER** 8:00 p.m., Auditorium
General Admission: \$18.00; Senior Citizens/Alumni \$16.00; Free to NEIU students, faculty, and staff.

MARK YOUR CALENDAR!

HOMECOMING IS JANUARY 20, 1996
Northeastern vs. Western Illinois University
Women's game * 12:00 noon
Men's game * 3:00 p.m.
Physical Education Complex

26

New Appointments

Twenty-six new appointments have been made including 20 new professors. They are:

- Lorie A. Annarella*
Curriculum and Instruction
- Lee Alan Beaty*
Counselor Education
- John A. Beckwith*
Educational Foundations
- Tomacz R. Bielecki*
Mathematics
- Clyde Bradley*
Educational Foundations
- Peter Chang*
Music
- Mei-Whei Chen*
Counselor Education
- Kevin R. Coulson*
Marketing
- Craig A. Cunningham*
Educational Foundations
- Rodney Higginbotham*
Speech and Performing Arts
- Jeffery S. Hill*
Political Science
- Leonard Iaquina*
Director of Development
- Julie H. Kim*
English
- Nancy Mathews*
Criminal Justice
- Michael P. McCann*
Chemistry
- Patrick B. Miller*
History
- Patricia K. Rea*
Acting Assoc. Provost
- David W. Rudner*
Anthropology
- Linda M. Rueckert*
Psychology
- Janaki Santhiveeran*
Social Work
- Therese Schuepfer*
Acting Provost
- Ana Gil Serafin*
Educational Foundations
- Lucille L. Smith*
Exercise Science and Cardiovascular Research
- Masha Veidenbaum*
Coordinator of International Programs
- Ana Villafane*
Program Associate of Proyecto Pa'Lante
- Michael Weinberg*
Reference Librarian

• The use of tobacco products is prohibited in all indoor university facilities, owned or leased, and in university owned vehicles.



**Northeastern
Illinois
University**

BOARD OF GOVERNORS UNIVERSITIES

5500 NORTH ST. LOUIS AVENUE
CHICAGO, ILLINOIS 60625-4699

OFFICE OF ALUMNI AFFAIRS

Non-Profit
Organization
U.S. POSTAGE
PAID
Chicago, Illinois
Permit No. 2929

ADDRESS CORRECTION REQUESTED

