

Spring 1987

## Northeastern News- Spring-Sumer 1987

John C. McGee

Follow this and additional works at: <https://neiudc.neiu.edu/neiunews>

---

### Recommended Citation

McGee, John C., "Northeastern News- Spring-Sumer 1987" (1987). *NEIU News*. 32.  
<https://neiudc.neiu.edu/neiunews/32>

This Book is brought to you for free and open access by the Publications at NEIU Digital Commons. It has been accepted for inclusion in NEIU News by an authorized administrator of NEIU Digital Commons. For more information, please contact [neiudc@neiu.edu](mailto:neiudc@neiu.edu).

# NORTHEASTERN NEWS

Northeastern Illinois University

Chicago

Volume XVIII, Number 3

Spring / Summer 1987



During the investiture ceremony, BOG Chairman Nancy Froelich and Chancellor Thomas Layzell present the presidential medallion to Dr. Lamb as his wife Nancy looks on.

## INAUGURATION OF GORDON H. LAMB

**O**n April 5, Gordon H. Lamb was inaugurated as the fourth president of Northeastern Illinois University.

The event, held in the university auditorium, was organized by the Inaugural Advisory Committee and headed by Harold Berlinger, professor of music, who opened the convocation and introduced the guests.

The platform guests included President Emeritus Jerome M. Sachs, Senator Howard W. Carroll, and Representative William J. Laurino. Among the official delegates of colleges and universities were James D. Barry, vice-president of Loyola University, Sister Charlene Endecavage (1977, M.A./history), president of Felician College, and Michael I. Sovern, president of Columbia University. President Lamb received formal greetings from hundreds of universities, among them such institutions as the University of Michigan, Drake University, and Eastern Illinois University.

President Lamb, in his address, expressed the importance of inaugurals as "a celebration of the academy itself: a reaffirmation of our responsibility to preserve and disseminate existing knowledge and to develop new knowledge." With his concern for students in mind, Dr. Lamb said, "We at Northeastern want to continue to be a path to career and personal success through education for many who could not otherwise afford an education. We can be a door to a remarkable life through education."

## WILLIAMS LIBRARY DEDICATED

On May 8, the Northeastern library celebrated its 25th anniversary as a Federal Government Documents Depository. **Yuri Nakata**, documents librarian emeritus, University of Illinois, Chicago, was the guest speaker. She discussed the formalization of depository programs and the credit due to **James Madison** who recorded debates from congressional conventions and kept a variety of journals, without which much U.S. history would be lost.

In a ceremony at the library entrance that afternoon, Northeastern formally dedicated **THE RONALD WILLIAMS LIBRARY**.

**Dr. Williams**, a respected scholar in the areas of speech-language pathology, sociolinguistics, and author of numerous short stories, plays, and poetry, served as president of Northeastern Illinois University from 1976 until his death on December 11, 1985. Under Dr. Williams' leadership, a new general education program was instituted,

the College of Business and Management was established, administrative policies were updated, and many new programs and policies were developed. He worked successfully to rectify underfunding at the university and to obtain the release of state funds for the completion of a new physical education facility.

Among the speakers were **Nancy Froelich**, chairman of the Board of Governors of State Colleges and Universities; **Sophie Black**, senior library employee; and **Senator Howard Carroll**. Senator Carroll, who worked with Dr. Williams, said, "Ron took that extra step to make this a great institutional step for

students. It is only fitting that this institution will have a learning center to remember him by."

**Arlene Williams** accepted a plaque from **President Gordon H. Lamb** honoring her late husband and commented on why the event meant so much to her. "He, his life and his contributions to the human



Mrs. Arlene Williams, daughter Rhonda, and son Robert, display plaque of the Ronald Williams Library.

continued on page 3

**The first Ronald Williams Distinguished Governmental Service Award was presented last month in Washington, D.C., to Mark Hatfield, senior senator from Oregon, by the American Association of State Colleges and Universities. Recipients of this award show a tireless commitment to improving and expanding educational opportunities.**



## SCHOOL DEDICATED TO UNI ALUMNA

**MARIA SAUCEDO**, a 1975 graduate of Northeastern's bilingual education program, was honored at the Saucedo Magnet School on April 24 in a ceremony that officially dedicated the school in her name.

Miss Saucedo was born in Monterey, Nuevo Leon, Mexico on April 23, 1954, and died from injuries sustained in a fire on November 12, 1981. She was a fighter who sought to change her community through its members, but especially its children. As a member of Caza Atzlan, which supports farm workers, equality for women, and the independence of Central America from the United States, she realized that everyone had pain and suffering

in their life and participated actively in the struggle for the working class—mainly to get Latinos hired.

Her work began at Northeastern when she founded and became the first president of the Chimexla Student Union. The union's main responsibility was to encourage Hispanic professors and counselors to join the staff of the university. After graduation, she became a teacher of English as a second language at Pickard

Elementary School in the Pilsen community where she taught her students to work diligently at their chosen tasks and practice the things they learn in life. She worked with teachers and parents to keep bilingual education in schools and encouraged parents to become actively involved in their children's education.

**Maria Gamboa**, a close friend of Maria's, shared with the audience

continued on page 3

## SPRING THING PLANNED

The 10th Annual Spring Thing will be held on Monday, June 22, at 7:00 p.m., in the Stage Center courtyard. The event will feature the "Alumni and Friends Band" under the direction of Dr. Edgar Gangware and is co-sponsored by Northeastern's Alumni Association.

Part of the evening's festivities will include the presentation of this year's winners of the Alumni Merit, Service, and Special Awards. Additionally, the annual meeting of the Alumni Association will be held prior to the program. This meeting will formally install the newly elected board members and elect the board officers for the 1987-88 school year.

Spring Thing is open to all members of the Alumni Association. Bring your relatives, friends, and lawn chairs. A reception will follow. In the event of inclement weather, the affair will take place in the university auditorium.

## CTC WORKSHOPS

The university's Chicago Teachers' Center will host a workshop on music education and a two-session institute on Islamic studies this summer. Participants will receive graduate credits at Northeastern.

Between June 29-July 3, "Creative Renewal in Music Education" will include work on synthesizers interfaced with computers. For information contact, Dr. Constance Speake, music department, 583-4050, ext. 2940.

"Islamic Studies," session I, June 29-July 23, and session II, July 27-August 20, will present a view of Islamic civilizations over the last 1400 years. Dr. Asad Husain, political science department, is the director of the institute and may be reached at 794-2713.

Dr. Jerry B. Olson, professor in the educational foundations department, is the director of the center. It is located at 3901 N. Ridgeway and is open Monday, Tuesday, and Wednesday, from 10:00 a.m.-8:00 p.m., and Saturday from 10:00 a.m.-3:00 p.m. The telephone number is 478-2506.

## UNI TALKS VANTAGE POINT

On April 26, Northeastern launched a weekly talk show called "Vantage Point," which features guests from Northeastern, other universities, community leaders, and public officials who will discuss a wide range of public interest topics. The show is hosted and produced by David Unumb, chairman of the speech department, and airs at 5:30 a.m. every Sunday on WCLR-FM (102).

## ASSOCIATION AWARDS PRESENTED

### ALUMNI AWARDS

The Alumni Association honored three individuals at the 1987 commencement exercises held on May 17 at Medinah Temple. Judy Macior, outgoing Alumni Association president, presented Faculty of the Year and Alumnus of the Year Awards.

Dr. Angelina Pedroso and Dr. Charles Shabica received Faculty of the Year Awards. The awards are based on a candidate's commitment to Northeastern, to students, and to the pursuit of academic excellence. Input for these nominations was received through the Alumni Association, networking with students, faculty, administration, staff, and the 1986 calendar year graduates. Dr. Pedroso, associate professor of foreign languages and literatures, has been teaching at Northeastern for 22 years. Dr. Shabica, professor of earth science, has been teaching at Northeastern for 16 years.

The Alumnus of the Year Award was presented to Joel Hall, a 1972 graduate and co-founder of the Joel Hall Dance Company. Hall has developed an international reputation as a choreographer and dancer. His dance troupe recently completed a third trip to Europe with two more trips scheduled. Hall has been commissioned by the Chicago Ballet company to choreograph a ballet which is scheduled to premiere in September. Especially important to him is his affiliation with Northeastern and he makes a conscious effort to let people know the influence the university has had on his life.



## PHON-A-THON RESULTS

The annual Phon-A-Thon was held from March 23-April 9. During the 12-night event, students, faculty, staff, and alumni volunteers called alumni seeking their support of the university. A total of 800 alumni pledged \$31,104 to the annual fund which provides scholarships to deserving students and ensures the quality of life for the entire university campus. To date, Northeastern has received 50 percent of the pledges.

The corps of volunteers who manned the phones were:

Lisa Brown	Mildred Emmerman	Barbara Lundberg	Theresa Shuman
Alice Buzanis	Avalyn Freed	John McGee	Ruben Sifuentes
Doris Watkins-Chalk	Tom Gouliamos	Elaine Morris	Bernie Szymkowiak
Phi Dang	Frank Hostetler	Jim Oberg	Shameran Talia
Rebecca Davis	Andrea Jung	Brenda O'Neal	Aurangzeb Toor
Eloise Edmonson	Laura Kuhrau	Carol O'Reilly	Tom Usiak
	Carleen Lorys	Phyllis Pavese	John Waechter

## ACCREDITATION REPORT

Northeastern received the final report of the accreditation team from the North Central Association of Colleges and Schools who visited campus in November. The report is still pending review, with final confirmation in the spring, but it appears we will receive full accreditation along with a list of recommendations for improvement.

Some of the major areas of concern were:

- Funding for adequate space for areas such as development, placement, and health services; remodeling.
- Continued adjustment to operating under the collective bargaining arrangement for faculty.
- Underfunding and a need to tie together planning and budgeting.
- Improved communication and cooperation with the BOG under the new chancellor system.
- Even though the university received high marks, better coordination, focus, and tracking in programs for under-prepared students.
- Increased availability of services to working students.
- Align the general education curriculum more closely with competency and assessment of knowledge.
- If the university is to meet the demands for public higher education in the nearby suburbs, an MBA program needs to be created.
- Improve the system of incentives for outstanding faculty performance.
- Better coordination of image-building and recruiting efforts.
- Some administrative reorganization.
- New concepts of responsibility for academic leadership and the role of department chairpersons.

## SPECIAL EDUCATION

The Department of Special Education at Northeastern Illinois University is anticipating a grant award from the U.S. Department of Education to train teachers to work with handicapped, at-risk preschoolers, ages three to five. Applicants are currently being accepted for the 36 credit hour program which begins in September of this year. Students who complete the training will receive a master's degree in early childhood special education. To request an application or receive additional information, contact Dr. Lynne Reynolds or Dr. Janet Lerner, 583-4050, extension 5105.

## SURVEY RESPONSE

The Alumni Update Survey, enclosed in the winter '87 issue of *NEWS*, continues to be returned. In addition to updating personal data on the 31,000 alumni, the survey will give direction to the alumni office and the Alumni Association as they plan future events and programs. Individuals who have not yet returned their survey can do so. Results of the return will be released with the fall issue of *NEWS*. Specific inquiries are currently being forwarded to the appropriate offices and individuals.

*NEWS* is published three times a year by the Office of Alumni Affairs for the university, its graduates, neighbors, and friends. All news items should be addressed to *NEWS*, Office of Alumni Affairs, Northeastern Illinois University, 5500 North St. Louis Avenue, Chicago, Illinois 60625-4699. Telephone: 312/794-2892.

John C. McGee  
Director of Alumni Affairs  
Editor of *NEWS*

Bernadette M. Szymkowiak  
Administrative Aide

Susan S. Olson  
Alumni Affairs Intern

The Office of Alumni Affairs is located on the south end of campus at 5350 N. St. Louis Avenue.

Northeastern Illinois University subscribes to the principle of affirmative action and does not discriminate against any individual on the basis of age, color, handicap, national origin, race, religion, sex, or veteran status.

### UNIVERSITY ADMINISTRATION

Dr. Gordon H. Lamb  
president

Dr. Kenneth W. Stetson  
acting provost

Dr. Peter C. Wollstein  
vice-president for administrative affairs

Mr. Donn Bichsel  
vice-president for development and public affairs

Dr. Daniel Kielson  
vice-president for student affairs

Photos courtesy of Learning Services, Print, Dennis Jourdan and Brian Harms.

## ELECTION RESULTS

Recent Chicago city elections have given enormous visibility to some Northeastern Illinois alumni. The November elections resulted in two Northeastern graduates achieving elected offices.

**Nancy Drew Sheehan** (1974, M.A./counselor education), endorsed by the Illinois Democratic State Party, was elected to the Metropolitan Sanitary Board. Commissioner Sheehan was sworn into office on December 2, 1986. Sheehan represents one of five women commissioners on the nine member board. The Sanitary Board issues policy decisions affecting the fourth largest taxing agent in the state of Illinois and third largest land holder in Cook County.

Also elected in the November general election was **Miguel Del Valle** (1974, B.A./political science; 1983, M.A./political science). Del Valle was elected to the Illinois State Senate representing the 5th Senatorial District. Senator Del Valle becomes the first Hispanic senator in the history of the state. He has been appointed vice-chairman of the Higher Education Committee along with his other assignments on the Energy and Environment, Revenue, Appropriations II, and Local Government Committees.

Elected in the city of Chicago during the February primary were **Keith A. Caldwell** (1980, B.A./board of governors), **Luiz V. Gutierrez** (1976, B.A./English), and **Patrick Levar** (1974, B.A./physical education). Alderman Caldwell will repre-

sent the 8th ward, Alderman Gutierrez, chairman of Chicago's Special Events Committee, will continue to represent the 26th ward, and Alderman Levar will represent the 45th ward. Receiving sufficient support during the primary to qualify for the April run-off elections were **Sharon Rae Bender** (1979, M.A./education), **Ambrosio Medrano** (1978, B.A./social work), and **Miguel Santiago** (1976, B.A./education). Bender was defeated in the 48th ward by **Kathy Osterman** and Santiago was defeated in the 31st ward by **Raymond Figueroa**. Medrano, 25th ward candidate, requested a court decision on a three-vote margin that exists between himself and **Juan Soliz**.

Individuals who ran in the February primary but did not receive sufficient support to advance to the April election included **Gloria Chevere** (1975, B.A./political science/sociology), candidate for City Clerk, and aldermanic candidates:

**Francisco Duprey** (1976, B.A./history)—31st ward

**John S. Fleming** (1972, B.A./political science)—49th ward

**Hector Franco** (1972, B.A./university without walls)—26th ward

**Chester R. Hornowski** (candidate, B.A./board of governors)—35th ward

**Virgil Jones** (1974, B.A./university without walls)—15th ward

**Michael C. Moses** (1973, B.A./political science)—50th ward

**Thomas W. Shaw** (1980, B.A./political science; 1983, M.A./political science)—48th ward

continued from page 1

### WILLIAMS LIBRARY DEDICATED

enterprise will be long remembered." Mrs. Williams also remarked that because the library serves everyone in the Northeastern community, it would have pleased Dr. Williams to know that his name will be remembered. If this library serves to carry on his vision, then the achievements will continue to accrue.

continued from page 1

### SCHOOL DEDICATED

the roots of Maria's ideas and principles. She said her parents taught her the value of her heritage, her identity, and to get a good education. Most importantly, she learned from her mother what it meant to be a woman who was not weak and dependent on anyone.

The event itself was the idea of **Rudolph Salmeron, Jr.**, the associate superintendent in the Office of Human Resources for the Chicago Public Schools. He graduated from Northeastern with a bachelor's degree in 1963 and a master's degree in 1967. **Dr. Manfred Byrd** general superintendent of the Chicago Public Schools and a guest speaker, said, "Maria Saucedo led a life that still influences the community and this school carries on the spirit of this great educator." **Linda Coronado**, a 1971 graduate of Northeastern and a member of the board of education, worked with Maria on several differ-

ent issues and said, "Even though we had our differences, there was respect, and Maria dealt with the differences with a sense of humor and dedication." **Santos Rivera**, director of the Department of Special Programs at Northeastern, presented a plaque to Principal **Karen Morris** from the Chimexla Student Union and said he had met Maria 13 years ago and was struck by her spirit and drive in education.

Northeastern President **Gordon H. Lamb** in his address said, "This is a moment of great pride for Northeastern Illinois University, where Ms. Saucedo trained to become the kind of excellent teacher we admire, and practiced her leadership on campus and in the community."

Since the Saucedo Magnet School was renamed in 1983, it has strived to carry on the values of a woman who was also a poet, writer, editor, and participator in a Chicano theatre group. **Steve Horowitz**, Saucedo assistant principal, leader of the dedication committee, and 1972 Northeastern graduate, was proud of the school's joint efforts and commented that Saucedo is the type of school that teachers love to teach in because everyone pitches in to achieve common goals.

In Maria's own words, engraved on a special plaque dedicated to the school by the student council, "Every day we should be born to learn."

## CAREER DEVELOPMENT AND ALUMNI JOB NETWORK

### JOB PLACEMENT SERVICES FOR ALUMNI

Northeastern's Office of Career Development and Placement (CD&P), B-117, welcomes the opportunity to assist alumni in efforts to change careers or move up the career ladder. Specific services include:

- job placement counseling
- current listings of jobs requiring a degree
- candidate job-matching service
- up-to-date resume files for alumni registered with CD&P
- resume writing workshops
- "how to interview" workshops
- workshops on "how to do a job search"
- campus visits by recruiting employers
- Chicago area job fairs (many employers attend)
- job market information (booklets, tables, charts, etc.)

Successful placement of alumni depends largely on the willingness of individuals to make intelligent and energetic use of these services, as well as to take independent initiatives.

### JOB VACANCY LIST/RESUME POOL

#### • A RESOURCE FOR EMPLOYERS

Are you or your employer looking for talented and highly motivated employees? Let Northeastern help you in your search? The Office of Career Development and Placement can either 1) place your job opening in a bi-weekly "Vacancy List," which reaches hundreds of students and alumni who are actively seeking employment, or 2) open our student or alumni "Resume Pools" for review by your company representative to directly identify qualified candidates. Please call the CD&P office at 583-4050, extension 3119, to take advantage of either procedure.

#### • A RESOURCE FOR JOB SEEKERS

If you are in the market for a new job, there are two ways that Northeastern's Office of Career Development and Placement might be able to help you: 1) we can send you copies of our bi-weekly "Vacancy List" which contains job opportunities from

employers who are actively looking for candidates, and/or 2) we can include a copy of your resume in our "Alumni Resume Pool." Each term the resume pool is reviewed many

times by employers who visit campus to seek candidates. Please call the CD&P office at 583-4050, extension 3119, to learn how you can take advantage of these services.

## CHAPMAN COMMENTS

### JOB VERSUS CAREERS

The Department of Labor, Bureau of Labor Statistics regularly prepares a forecast of occupational availability trends. These forecasts indicate expected position availability within the major industries and project the growth of the job market within the U.S. economy. They do not, however, project the availability of career positions.

Recently, **Jack Chapman** (1979, M.A./counselor education), president of Bernard Haldane, Chicago, discussed the uses of career selection and satisfaction. "What you would like," Chapman said, "the marketplace will provide."

In explaining his comment, Chapman recommended the following course of action: individuals should evaluate those items in their life which provide them with satisfaction, ask themselves how they would like things to be, and if they are willing to have it that way. If the individual desires to achieve his/her defined level of satisfaction, then they should proceed in gathering the appropriate information and design a plan of action.

Armed with this background, Chapman believes that an individual will have the tools necessary to achieve career satisfaction if he/she is willing to make the appropriate commitment.

# SPEAKING WITH

## ■ JOE MAYO

The following interview with Joe P. Mayo—M.A. 1972, inner city studies—was conducted on March 27, 1987, while he was the commander of the youth division for the Chicago Police Department. He is now the assistant deputy superintendent in the Bureau of Operational Services in Chicago. This interview has been edited for space consideration.

**Q. Why Northeastern for your master's, and the Center for Inner City Studies in particular?**

**A.** I'd seen some of the things that Northeastern is concerned with, one of which is educating in a certain way; it's advantageous to people who have particular goals but cannot stay on campus as a younger graduate can do. More than that, though, was because the founder of what is now Northeastern is, in my mind, Dr. Jerome Sachs, whom I've considered the person that brought Northeastern from Chicago Teachers College to its present status. He happened to be a person that I knew and I watched some of the things that he had done with the institution. I saw some of the designs and knew some of the teachers involved and their dedication to people in terms of the educational process rather than the training process. I knew people who had been there and participated there and saw some of the graduates coming out, being able to think very well and to progress. I had a career in law enforcement and had the opportunity to do some teaching but I wanted to study it. Talking to people at CICS, I said, "Well, here's an opportunity to review some things that I wanted to know." It was convenient and I found people who appeared to be dedicated. So I selected Northeastern primarily for those reasons.

**Q. How has the center's education helped you in your career?**

**A.** In many ways there was an awareness that was brought to me and it caused me to do reading that I would not have done otherwise. I was able to explore areas that I probably wouldn't have explored myself. It has helped me in other areas that I have gone into in terms of my work. I met people who were dedicated, particularly teachers, and a few other persons in those professions. The sharing of information and the desire to contribute something, not only to the profession that the people were in, but to the people, the city, and the community in general, was a help to me in broadening my outlook and causing introspection within myself. It has helped me to weather some storms that ordinarily I would not have weathered because of some of the philosophies that I've received from the reading that I did. Had I not received the education and the degree, I probably would not have been chosen as the director of security for Argonne National Laboratory, or the director of security for the Chicago Board of Education while on leave from the police department, or, for that matter, as the chief of police of Muskegon. Certainly, I would not have been able to teach. So, it has helped me vocationally, emotionally, socially, and personally.

**Q. If you had to list your three greatest achievements in the service of Chicago, what would they be?**

**A.** Being commander of the youth division allowed me to contribute something not only to my profession but to this department and to the city. I've been able to develop some programs and implement those programs in such a way that it has made a substantive contribution. My stint at the board of education was spent creating a training program for school security personnel; a program I feel was not matched at that time by any other in the country. We developed and brought the programs together with other members of the board of education, such as principals and district superintendents; programs that were designed to do things other than just be security. The third contribution would be just being able to participate in some of the civic organizations that I've been involved with. I attribute many of those appointments or associations to having matriculated through Northeastern.

**Q. You used to serve on the Alumni Association Board of Directors. How do you see the association helping the school?**

**A.** I think that the various affairs that the alumni association sponsors, "Spring Thing," the forums, and others are instances where the association not only contributes to the image of the university, but allows, again, alumni, students, and friends and relatives of alumni and students to come together in a meaningful get-together where not only does one have an opportunity to share with each other, but it also allows them to participate in an event that contributes something to that university. Just being able to have an association that one can contact and get certain information from is important because it does act, in a sense, as

*Commander Joe P. Mayo, recently promoted to assistant deputy superintendent, Bureau of Operational Services.*



a resource to contact alumni you've lost contact with or perhaps for job opportunities. I think that there are a number of ways that the association contributes in terms of maintaining liaisons, communications, and networks.

**Q. How do you see the university helping the alumni?**

**A.** By sharing job opportunities with the alumni, because every university gets inquiries, and by continually inviting the alumni to come back and to contribute in various ways. Many times the institution must extend that hand because people have a tendency not to go to institutions, organizations, or authorities, but they will respond when that authority or institution reaches out to them. I see the institution helping them by maintaining and increasing the level of academic achievement and standards. As I recall, a few years ago Northeastern Illinois University was rated very, very high nationally in a couple of areas. I think if we can maintain that type of image from an academic viewpoint, it helps the students and alumni in a way that can't be counted.

**Q. Are you still active in CICS? If so, why and in what capacity?**

**A.** Well, I'm not as active as I should be because I have a number of other committees, commissions, and task forces that I serve on as a result of my job and my desire, in some instances. As past president of the alumni association for the center, I found that there were a lot of people with a common attitude that I held; that each individual has a responsibility to go out in the community and do something positive for that community and for the city in general. I found people with a dedication toward this idea; people that are still there or will go back and I like those types of contacts. I'm interested in people who want to contribute something substantive and of value to the people in general.

**Q. Like a lot of people who have gone through the center?**

**A.** I find many of them have gone on. They're not as active at the center but they've made significant contributions in many different fields. They are educators at the elementary, secondary, and college levels, they're in the media, and they're dealing in their own businesses. So many have taken what they have learned there and used that in furthering their own goals.

**Q. If a young adult or a high school student asked you your impressions of Northeastern and about going there, what would be your advice to that student?**

**A.** I'd encourage it because I think that we have seen Northeastern grow significantly as an institution in the past twenty years and, in certain areas, they're second to none. There's a need for improvement in business simply because the university hasn't been directed towards that area; they're just going into it. But I think that if one wants a good education, at Northeastern they are going to get a faculty that is interested in them. I think that one of the biggest keys to education is getting faculties that are interested. We used to say in the army that if the student didn't learn, the teacher didn't teach. At Northeastern you have teachers that are interested in reaching students and will probably go that extra step in order to reach out. I think that the fact that one can adjust their schedules in the work world and still enroll in a school such as Northeastern is important. It is, for the most part, a transitory institution that makes itself available to those students who have gone back and are extremely interested in learning just for the sake of learning rather than for developing themselves for a vocation. It adds to the flavor of education because you've got people who have achieved and are trying to progress even further, that go back and contribute a certain stability to the young persons that are in school. What a student gets is a mixture of wisdom, energy, desire, and respect that is unique in universities of that type.

**Q.** You've been involved with the WE CARE program, basically from its inception. How successful has it been?

**A.** The WE CARE concept that I have developed has been very successful because we have begun to fight gangs in a different way. The superintendent of the police department asked me to develop a school security strategy. It's designed to stop harassment (we've proven that), vandalism, and graffiti in and around the school. But it came to mind that the greatest need was to have something to fill the void that would be created in the kids if we were to stop gang activity. It also came to my mind that, often times, many of us don't go back and share with youngsters on an ongoing and systematic way the fact that we once were in their shoes, didn't know where we were going to go or going to do. And if we did go back and share with them, they would see people who had achieved because they had prepared and sacrificed themselves. And they would share some desire for self-esteem, responsibility, discipline for staying in school, and preparing for the future. So, the concept was to get people that achieved in the athletic, intellectual, business, and corporate worlds; hopefully, from the school that they graduated from. If not, a school that had a strength in the area that they were functioning in or just a school where kids could look up to people. The WE CARE concept has many facets and the role model program is just one area. Part of the WE CARE concept was in dealing with sexual abuse which at the time wasn't a situation that people were aware of nationally. This was kept in the criminal justice system and we worked with other disciplines and entities to make people aware of the fact that child sexual abuse is a serious problem; to try to set some standards related to

investigation and work closely with those in the medical field. Someone had to begin to listen to the outcries of young people and, hopefully, the little contribution that we would make would cause agencies to change initiatives that would help people, the families as well as the child. We used the WE CARE concept to deal with the lack of national concern for missing children. For example, putting kids' picture on the milk cartons allow many, many more people to view and aid in returning kids to their loved ones. It also allowed for a tutorial effect in that there would be a conversation piece at breakfast in terms of safety and it acted as a deterrent to a person who might use young people for prostitution and other trafficking of pornography if they felt that they were going to be associated because the child's pictures were on milk cartons. We also began to find young people who had been away from home for a lengthy period of time. We knew that they had to exist some way. We also knew that there are studies that have shown a young person, found to be on the street for two weeks without any resources, 14, 15, 16 years of age, or even younger, is often involved in prostitution. So we want to question young people and their families who are going to be found and returned, rather than closing the case report saying the missing child is back. We often found that the question in point is probably that the missing child had a problem or multiple problems. Sometimes they have been forced into prostitution by pimps which allowed us to make an arrest of the offender and also to direct the family and that child to an agency that has the expertise to assist them, medically and psychologically. The whole WE CARE program has pursued various initiatives in averse areas that the youth division is responsible for in the Chicago Police Department. ■

## ■ RITA BRUSCA

*The following interview with Rita Brusca—B.A. 1977, special education, M.A. 1980, special education—was conducted on March 5, 1987. Rita is an assistant professor in the special education department at Northeastern. This interview has been edited for space consideration.*

**Q.** Rita, what brought you to Northeastern in the first place?

**A.** Well, one reason was because it was close. Another reason, which I guess was the major one, is that I didn't have to ask my parents to finance any part of my education. The tuition was inexpensive enough so that I could pay it easily with a part-time job. Even though my parents were certainly willing to take out a loan or go into their savings for me, I just didn't think that it was an appropriate thing to do.

**Q.** You went straight from a B.A. to an M.A. and then to Northern or ...

**A.** I completed my bachelors, taught full-time, worked here on my master's part-time, and continued to work for five years. At that point, it was another three years full-time teaching and then I made the decision to go to Northern for a doctorate. I also quit school in my sophomore year because I simply didn't know what I wanted to do. I was taking a hodge-podge of courses and couldn't really get interested in anything. So I decided to work in business; for a while in retail, then as a sales representative for a cosmetic company, and, finally, I decided to return and go into special education.

**Q.** What got you into special education?

**A.** I had a cousin who was working at another university in psychology and she started to work with very young children who had learning problems. After talking to her and visiting her place of work, I decided this was something that I wanted to do.

**Q.** If you had dropped out and came back here, was there a particular reason you came back here for special education?

**A.** Having been at Northeastern for two years, I was familiar enough with the school to know that the special education department was a good one. Generally, the College of Education was a good college because they were producing many teachers per year who were working in the Chicagoland area. This was a very good place to be trained as a teacher.

**Q.** Why did you come back here to teach?

**A.** When I came back, I was a junior and wanted to work with special education kids. However, as I saw different people in the department teach, I thought to myself that one day I would like to be like them, to come back here, have a group of kids, and shape some ideas and minds. I thought it would be nice to be a professor and especially to come back to Northeastern because I was so comfortable here. There was one professor who still teaches in the department, Dr. Dorothy Bernstein. I took quite a few classes from her because she teaches in the field of behavior disorders. I was impressed with her and so influenced by her

that I thought it would be nice to be like her in some fashion later on.

**Q.** Tell me about your research—in 25 words or less.

**A.** The research that I'm doing is with a population that no one sees very much, the severely handicapped. They are moderately to profoundly mentally retarded and many of them have concomitant disabilities such as cerebral palsy, hearing loss, and sight loss. We're talking about a very small percentage of the population and my research concerns trying to increase their learning; to reach through the isolation in which they live.

**Q.** Who gets to see your results?

**A.** Results are presented at conferences, statewide and nationwide, and if the results are of high quality and written up properly, they can be presented in national journals. Having just finished my dissertation, that's what I'm working toward now.

**Q.** If somebody came to you from outside the university and asked you about coming to Northeastern, what would you tell them?

**A.** If they're an undergraduate student in special education, I would tell them that they would probably get the best undergraduate education in special education here, because that was my experience. If they already had a degree in special education and were coming back for a master's degree, I would suggest that they get it in an area in which they were not certified; in other words, a new area. Otherwise, they would wind up hearing lots of material that they've already covered. If I were to give advice to a person who has a degree in regular education or someone from outside of the field who decided that they wanted to be a teacher, I wouldn't hesitate to recommend a master's program here. I think that we have some very good people on the faculty, it's a personalized program, and it's highly individualized. ■



investigation and work closely with those in the medical field. Someone had to learn to listen to the outcries of young people and hopefully the

You've been involved with the WE CARE program, basically from its inception. How successful has it been?

careless show many, many more people to view and aid in returning to their loved ones. It also allowed for a mutual effect in that the president in terms of safety and health. We might use young people for photography if they felt that they were going to be on milk cartons. We had pictures were on milk cartons. We had been away from home for a long time. We also had to show a young person, found to be without any resources, 14, 15, 16 years old, then involved in prostitution. So we went to their families who are going to be found in the case report, saying the missing child. The question in point is probably that we have multiple problems. Sometimes they are by pumps which allowed us to make a decision to direct the family and that child to assist them, medically and psychologically. The program has pursued various initiatives. The division is responsible for in the Chicago

strategy. It's designed to stop harassment (we've proven that) and

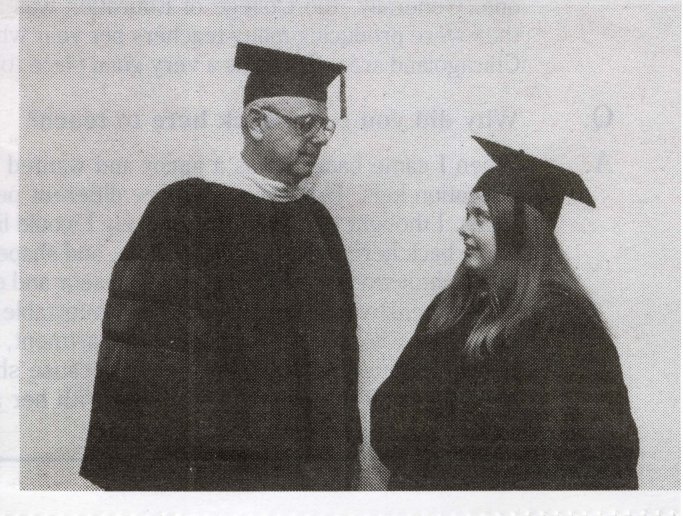


*Alumni Association Student Art Purchase recipient Hannah Messinger with alumni president Judy Macior and President Lamb.*



*Alumni discuss their Northeastern experience as part of the undergraduate symposium.*

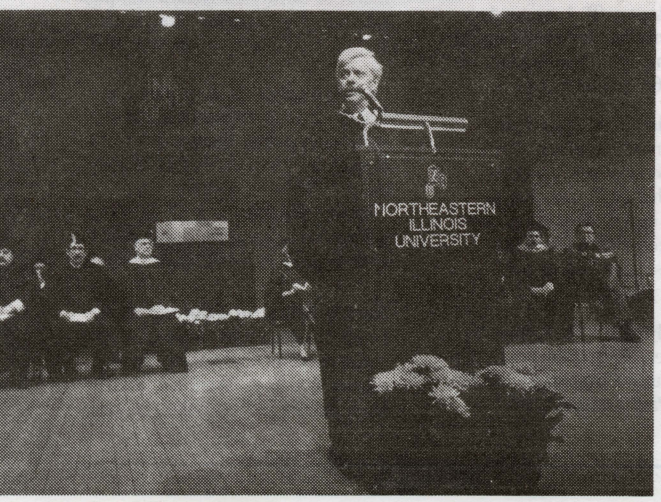
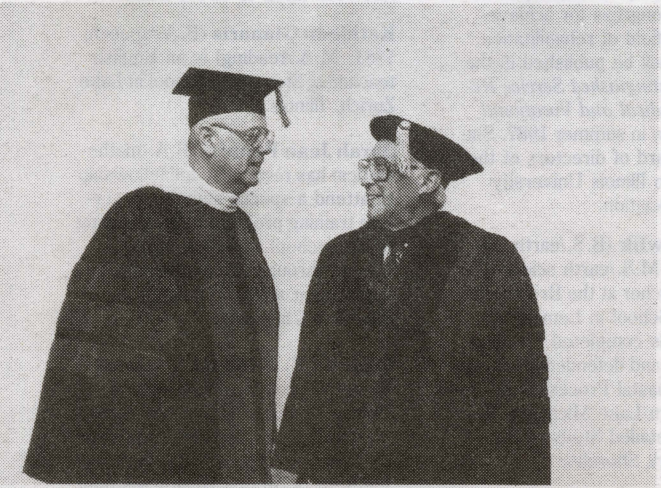
# INAUG





Maya Angelou meets with the audience after her lecture.

ATION



A packed house for the Maya Angelou Distinguished Lectureship Series.



# ALL IN THE FAMILY

This column acknowledges the achievements of our graduates. If you have "news" that you would like to share with the Northeastern community, please write to:

Office of Alumni Affairs  
Northeastern Illinois University  
5500 N. St. Louis Avenue  
Chicago, Illinois 60625-4699

## CLASS OF 1962

**June Carolyn Dudeck** (B.A./elementary education), principal of Hawthorne school in Chicago, was the 1986 recipient of the Illinois State Board of Education award for "Those Who Excel."

## CLASS OF 1963

**Robert Davis** (B.A./elementary education) owns a management consulting firm which specializes in health care associations and issues.

**Carol F. Zehren** (B.A./elementary education) is currently working toward a doctor of philosophy degree in historical foundations of education at Loyola University in Chicago.

## CLASS OF 1964

**Ginny L. Giese** (B.Ed./general education) is a part-time learning specialist at Carroll College in Waukesha, Wisconsin.

## CLASS OF 1965

**Patrick F. Tanner** (B.A./elementary education), a teacher for school district 95, is the owner of Tanner Carousel which is involved in educating the public about carousel history through slide presentations and carving demonstrations.

## CLASS OF 1966

**Kenneth P. Gill** (B.A./history), a teacher/librarian at Portage Park School in Chicago, is also the first vice-president of The Heritage Club of Polish Americans.

**Donald E. Greaney** (B.A./elementary education, 1975; M.A./political science), department chairperson at Gage Park High School, received a grant to study computer literacy at Dartmouth College.

## CLASS OF 1968

**Carol Ann Williams Bradley** (M.A./inner city studies) is currently principal at Beech Tree Elementary School in Fairfax County, Virginia.

**Mary Jorndt** (B.A./history), a real estate agent with Remax Suburban West in Wheaton, sold in excess of \$1 million during January 1987.

**Diane K. Kalish** (B.A./early childhood education) is a Chicago Board of Education certified learning disabilities teacher.

## CLASS OF 1969

**Shirley L. Berggard** (M.A./special education), a retired teacher of 20 years, was admitted to the Illinois Bar.

**James Frazier** (M.A./chemistry), a chemistry teacher at Conant High School in Hoffman Estates, was honored by the University of Chicago with an Outstanding Teacher Award for teachers who are recommended by incoming freshmen.

**Donald R. Keppner** (B.A./psychology) is a licensed psychologist in Illinois and Georgia specializing in eating disorders. He received a master of arts degree from Roosevelt University and a doctor of philosophy degree from the Illinois Institute of Technology.

**Dan Leimberer** (B.A./secondary education), a customer service representative for World Library Publications in Schiller Park, is the director of music at Lutheran Memorial Church.

**Esther S. Levun** (B.A./early childhood education), a retired employee from the financial aid department at Northeastern, is currently traveling the table tennis circuit of tournaments.

**Marilyn Lovejoy-Gregory** (B.A./French) is teaching French, Spanish, and music at Walter Sundling Jr. High School in Palatine, Illinois.

**Linda Joy Schmidt** (B.A./psychology; 1971, M.A./special education) graduated from Loyola University with a doctor of philosophy degree. Her dissertation was entitled, "Relationships Between Pupil Control Ideology, Pupil Control Behavior, and the Quality of School Life."

**Gloria S. Willig** (B.A./linguistics) has been teaching for 17 years in district 25 in Arlington Heights, Illinois.

## CLASS OF 1970

**Brigid P. Gerace** (M.A./speech) is a teacher at Franklin Fine Arts Center, a Chicago Magnet Public School.

**Ron Isaacson** (B.A./art), co-founder and co-owner of Mindscape Gallery of Evanston, was a juror in the 11th Annual Juried Alumni Exhibition.

**Rosie Lowe** (M.A./education), a teacher at Hendricks Elementary School, was named as one of the winners in the annual Kate Maremont Foundation Dedication Teachers Award competition which recognizes 10 outstanding Chicago public school teachers.

**Glen Mordine** (M.A./special education) is the director of special education in the lower Kuskakwim school district in western Alaska, serving 2500 Yupik Eskimo students in 22 villages.

**Dr. Kurt Thomsen** (B.A./mathematics; 1974, M.S./earth science), employed by PRC Engineering in Michigan, was a guest speaker at a seminar given by Northeastern's earth science department. His talk was entitled, "A Collection/Treatment/Recharge/Flushing Ground Water Remediation Program."

**John Winterfield** (B.A./history) is a firefighter/paramedic in Glenview, Illinois.

**James W. Piety** (M.A./geography and environmental studies), professor of geography and social science at Wright College in Chicago, received the Faculty of the Year Award from Wright's student government. He wrote *Rediscover America*, an historical geography of the United States which was published by Stipes, Urbana, Illinois. Jim also co-authored an article with Dr. Roger Charlier, former professor of earth science, for the *Encyclopedia of National Sciences*, Volume XVI, Oceans and Coasts, Karst Topography of the Yugoslavian Adriatic Coast. Another article, "Land of the Two Proud Peoples, the Walloons and the Flemmings of Belgium," was published in the 1987 spring issue of *Geographic Perspective*. Jim also presented a position paper at the Conference of the Bicentennial of the U.S. Constitution at the Knickerbocker Hotel in Chicago. He is the executive vice-president on the board of directors of the Northeastern Illinois University Alumni Association.

## CLASS OF 1971

**Frank J. Anselmo** (B.A./psychology; 1981, M.A./sociology) is the deputy executive director of the Accreditation Association for Ambulatory Health Care.

**Roger Bader** (B.S./biology; 1981, M.S./earth science), an earth science teacher at Wendall Phillips High School in Chicago, was hired as a part-time instructor at Northeastern to teach the evening section of Great Mysteries of the Earth. He recently co-published with alumnus Frank Pranschke a research paper entitled, "Evidence for the Lake Chippewa Low Water Stage in Lake Michigan," in the *Journal of Great Lakes Research*.

**Beryl Sharon Bellows** (B.A./music), choral director of a women's chorus, "The Harmonettes," is a cantorial soloist at Temple Judea Mizpah in Skokie, Illinois, as well as a choral member of the Halevi Choral Society.

**John Gough** (M.A./counselor education), principal of Johnsbury High School in McHenry, received his doctor of education degree from Northern Illinois University. His doctoral dissertation was entitled, "The Use of Academic Controls in Determining Athletic Eligibility."

**Laura Lee La Barbara** (B.A./early childhood education), a third grade teacher at Holmes School in Oak Park, Illinois, is completing work on a master's degree in school administration at Concordia College in River Forest.

**Paul Szipiera** (B.A./history; 1975, M.S./earth science), associate professor of geology and astronomy at Harper College in Palatine, served as moderator for the Field Museum's special program on plate tectonics and continental drift. He is also a member of the board of directors of Northeastern's Alumni Association.

**Robert Steele** (B.A./psychology) was awarded a juris doctor degree from the Illinois Institute of Technology, Chicago-Kent College of Law.

**Arthur T. Straus** (B.A./history), an adult education counselor at Nova University and real estate salesman in Fort Lauderdale, Florida, completed his master of science degree in counselor education.

**Paula Upshaw** (M.Ed./mathematics) is a mathematics and computer science teacher at Roycemore School in Evanston, Illinois.

## CLASS OF 1972

**Eugene Barnes** (B.A./sociology; 1980, M.A./inner city studies) is a child welfare specialist for the Illinois Department of Children and Family Services.

**Jules E. Beuck** (B.A./psychology) is a psychiatric social worker at Patton State Hospital in California. He has received his accreditation as a licensed clinical social worker.

**Patton L. Feichter** (M.A./political science), a teacher at Maine South High School, was a recent candidate for a seat on the Elk Grove Village board.

**Virginia Mae Frank** (B.A./university without walls) was elected president of the Chicago Area Inter-Chapter Council Sigma Alpha Iota, an international professional musicians fraternity for women. She received the National Distinguished Service Registry Award from the Library of Congress for achievement in the field of rehabilitation. Her award will be published in the *National Distinguished Service Registry for Medical and Vocational Rehabilitation* in summer 1987. She is on the board of directors of the Northeastern Illinois University Alumni Association.

**Dennis Gawlik** (B.S./earth science; 1986, M.S./earth science) is a science teacher at the Bromberek District 65 School in Lemont, Illinois. He has completed his master's degree and defended his thesis entitled, "Coastal Processes in Southwestern Lake Michigan: Results of a Detailed Study of the Highland Park Shoreline."

**Glenn Hartman** (B.A./secondary education), vice-president of Logical Microsystems, Inc., is a member of the District 68 School Board.

**Lee Mishkin** (B.A./geography and environmental studies; 1973, M.A.T./earth science), an earth science teacher at Benito Juarez High School in Chicago, plays bass guitar on weekends with "The Moonlighters," a wedding-bar mitzvah party band.

**Robert N. Pfeiffer** (B.A./psychology) has been elected the first vice-president, human resources director, at St. Paul Federal Bank.

**Steve Pierce** (B.A./psychology) specializes in baseball negotiations and financial planning. He is a master's degree candidate at Arizona State University.

**Mary A. Schick** (B.S./biology) teaches seventh grade life science at Emerson School in Oak Park.

## CLASS OF 1973

**Edwin Claudio** (B.A./sociology) is the associate director of the Latino Institute and a member of the Park District Board.

**Susan Hilary Cohen** (B.A./psychology; 1976, M.A./special education), a teacher at New Trier High School, has also obtained her real estate license.

**Janice Geisheker** (B.A./early childhood education) is a librarian for the Willows School in Niles, Illinois.

**Charles Gerace** (M.A./speech) is the director of theatre at Niles College of Loyola University and has just been hired to direct a film.

**Kathleen Gianaris** (B.A./speech; 1981, M.A./reading) is an English teacher at Stevenson School in Lake Zurich, Illinois.

**Sarah Jean Pennisi** (B.A./mathematics) has received a full fellowship to attend a special summer in-service training program in the teaching of high school statistics, being offered through the mathematics department at the University of Illinois at Champaign.

**Roberta B. Rose** (M.A./English literature) has taught at several Chicago public high schools, community colleges, and the University of Illinois at Chicago. The National Institute of Mental Health will publish one of her articles about mental illness, civil liberties, and the law.

**Lee Schaefer** (B.A./psychology; 1983, M.A./social science) a professional counseling therapist, taught classes in "Holistic Stress Management," "Holistic Health," and "Holistic Weight Control" at the holistic living center in Unity Northwest Church in Des Plaines, Illinois.

**Nancy Johnson Tobiasz** (B.A./physical education), a physical education teacher and varsity gymnastics coach at Grant Community High School in Fox Lake, Illinois,

completed a master of science degree in physical education at Chicago State University.

## CLASS OF 1974

**Rocco Anthony Cimmarusti** (B.A./social science) is the clinical director at the Center for Family Development and a senior family therapy trainer at the Institute for Juvenile Research; while maintaining a private practice. He has published literature in the areas of psychotherapy, training, and treatment of school problems.

**Janis Fitzsimmons** (B.A./special education; 1975, M.A./special education) is an instructor of education at North Central College in Naperville, Illinois.

**Valerie S. Kovitz** (B.A./psychology) is the director of special projects for Project Learning Strategies (PLUS!) at DePaul University in Chicago which is a support program for students with learning disabilities.

**Joseph Locasio** (B.A./Spanish) is a computer coordinator for the Central High School District in Chicago. He also teaches an advanced placement computer science-pascal programming class and, in the evening, is employed by Olive-Harvey College in Chicago as a professional training specialist.

**Michael D. Marino** (M.A./special education) received a doctor of education degree.

**Phyllis Anne Miller** (M.A./special education) is employed part-time at Lincolnwood and Glenview Public Libraries.

**Augusto Pareja** (B.A./Spanish) is the medical director of Resurrection Hospital Immediate Care Facilities in Chicago.

**Herbert Ramlose** (M.A./English literature) co-directs the North Lake District, Illinois Association of Teachers of English, and was named Teacher of the Year at Zion-Benton High School for 1985-86.

**Marsha D. Santelli** (M.A./linguistics) is the principal of Chappell Elementary School in Chicago.

**Larry Irwin Teren** (B.A./English) operates a computer consulting practice.

**Dennis S. Tierney** (M.A./history) is the president of the California Council on the Education of Teachers, which is the principal organization of teacher education programs in the state of California.

**Sue Sioux Turnoy** (B.A./university without walls) is currently in management for the Chicago Housing Authority's Senior Housing Program.

**Char-Anne Yakimow** (B.S./biology) is an emergency room nurse at Resurrection Hospital in Chicago.

## CLASS OF 1975

**Gloria Chevere** (B.A./sociology/political science) is among ten Chicago area women to be honored at the second annual Midwest Women's Center "Tribute to Chicago Women."

**William H. Logan** (B.A./board of governors), Evanston police chief, is celebrating his 30th year with the force.

**Allan Magierski** (B.A./mathematics) is the senior programmer analyst for his division at United Airlines in Elk Grove Village.

**David Mendel Patt** (B.A./political science) is the first executive administrator of Citizens Information Service, a non-profit agency, in Chicago.

**Debbie Patterson** (B.A./physical education) is a gymnast and lives in Arizona.

**Frank Pranschke** (B.S./earth science; 1980, M.S./earth science) co-published a research paper with alumnus Roger Bader entitled, "Evidence for the Lake Chippewa Low Water Stage in Lake Michigan."

**Sharon Susan Rakowski** (M.A./English literature) is vice-president for The Personnel Association of DuPage County and appeared in the 1987-88 edition of *Who's Who in American Women*.

**Eugene Sanders** (B.A./physical education) is a personnel officer for the City of Sierra Vista in Arizona.

## CLASS OF 1976

**Danny Crawford** (B.A./earth science) is a professional basketball referee.

**Jose Antonio Cuevas** (B.A./early childhood education) is the manager for the Multilingual/Multicultural Head Start Resource Center for the Department of Human Services in Chicago.

**Richard M. Curi** (M.A./history) is a music specialist for the Department of Defense Dependents' School System at Clark Air Force Base in the Philippines.

**Robert J. Dougherty** (M.A./inner city studies) has been appointed assistant dean of students and director of student activities at Saint Xavier College in Chicago.

**Carmen Dumler** (B.A./board of governors) is retired after working at Alexian Brothers Medical Center in Elk Grove Village as a charge nurse/counselor in the substance abuse unit.

**Fern M. Finkel** (B.A./special education) is the president of The Third Power, Inc., management consultants specializing in automation needs.

**Myra Gail Friedland** (B.A./physical education) is a teacher at Sager Solomon Schechter Day School in Northbrook.

**Debra Catherine Nelson** (B.A./special education) received her master's degree from Loyola University and is presently working for the Chicago Board of Education as a school psychologist in the orthopedic and sensorially handicapped department.

**Joseph Michael Pavese** (B.S./biology) is currently in private practice in Oak Lawn after completing his Obstetrics and Gynecology residency at Rush Presbyterian-St. Luke's Medical Center.

**Laurie Rubin** (B.A./psychology), a photographer, is the winner of a "Photographer of the Year" award for still life from *American Photographer* magazine.

**Dianne Weinand** (M.A./speech) is the director of institutional advancement at Felician College in Chicago.

## CLASS OF 1977

**Charlene A. Bassett** (B.A./speech) is a member of the Raleigh Ontario Society, a community chorus, which sang with the American Symphony Orchestra at Carnegie Hall shortly after its grand re-opening.

**Delores J. Brooks** (B.A./university without walls) is the coordinator of public relations and development for the central administration offices at the City Colleges of Chicago. She also writes feature free-lance articles for the *Hyde Park Herald* and *Dollars & Sense* magazine.

**Eduardo Camancho** (B.A./kaskasia) is the director of research for the Chicago Community Renewal Society and co-author of his third book, *Race and Politics in Chicago*.

**Linda Hoch Carnow** (B.A./board of governors), former earth science department secretary, recently passed her final exam for the diamond course from the Gemological Institute of America.

**Claudia Dancing** (B.A./board of governors) received a master's degree in social science work from the Jane Addams School of Social Work from the University of Illinois at Chicago. She is in private practice at the Barrington Therapeutic Massage and Holistic Counseling Service in Barrington, Illinois.

**Howard Joseph Denk** (B.A./sociology), working in labor relations for the Chicago Police Department, has recently graduated from Loyola University with a master's degree in industrial relations.

**Mary Etian** (B.A./board of governors; 1983, M.A./music) has given private lessons in piano for 32 years.

**Dr. Deborah C. Hockman** (B.S./chemistry) recently co-published, "Automated Dissolution Analysis by Liquid Chromatography," in *Pharmaceutical Technology* magazine.

**Charlene Kukla Hoferle** (M.A./English literature) has recently been appointed the U.S. Railroad Retirement Board's director of taxation programs which administers benefit programs for railroad workers and their families.

**Patricia Ann Hussey** (M.S./mathematics), a tenured faculty member at Triton Community College, is completing a master's degree in computer science at DePaul University in Chicago.

**Carol Ann Kemp** (B.A./criminal justice) graduated from Loyola University with a master's degree in social work.

**Linda Marie Larson** (B.A./physical education) is the women's athletic coordinator at the University of Minnesota-Duluth.

**Marva Litt** (M.A./special education) has been promoted to district manager of Syntax Laboratories and will supervise medical representatives in the South Chicago area.

**Sirikul Marshall** (M.S./physics) is an instructor of natural sciences and engineering and technology at Point Park College in Pittsburgh, Pennsylvania.

**Betsy McCoy** (B.A./art), is a math teacher at Thornton Township High School in Harvey, Illinois.

**Cheryl Meyerowitz** (B.A./elementary education) is a special education teacher at City-Wide City College.

**Chris Wacker** (B.S./earth science) is personnel director for Montgomery Ward and lives in California.

## CLASS OF 1978

**Gerard A. Butzen** (B.A./board of governors; 1980, M.A./counselor education), director of human resource development at AEC Corporation, is currently in the final stages of completing his dissertation for his doctor of philosophy degree in counseling at Loyola University. He has also written three technical books relevant to his industry.

**Dale A. Dompier Chrystof** (B.S./biology; 1984, M.S./biology) has recently passed the ARDMS Registry exam in pediatric echocardiography and is currently working at Cook County Children's Hospital.

**Ella M. Drath** (B.A./board of governors), along with her identical twin sister, is a case study in genetic research at Indiana University in Indianapolis.

**Harold Edward Eckholm, Jr.** (B.A., social science) received a master's degree in counseling psychology from James Madison University in Harrisburg, Virginia, and is working on his doctorate from the University of Virginia.

**Giro J. Falco** (B.A./human services) is a board member of Protection and Advocacy, Inc., an agency that protects the rights of developmentally disabled, retarded, and mentally ill individuals.

**Bonita R. Guerra** (B.A./social science; 1985, M.A./counselor education) is a social worker at Kaleidoscope in Chicago.

**Michael Y. Harada** (M.S./biology), after graduating from the dental school at George Washington University in St. Louis and serving three years in the navy, has started a private practice in Morton Grove.

**Joanne Harriet Kalnitz** (M.A./linguistics) co-authored two ESL reading textbooks entitled, *Myth Makers* and *World Shakers*.

**Antoinette Kracke** (B.A./psychology) is employed as executive director of the Senior American Coalition in Hancock, Michigan.

**John M. Scatchell** (B.A./board of governors) operates his own security company, Secure Security, Inc., which serves the fast food and construction industries.

**Mary C. Jung Seufert** (B.S./biology) is an earth science teacher at Shipley High School outside of Philadelphia, Pennsylvania.

**Paul J. Verisario** (B.A./history) is the president of All-Security Insurance Agency, Inc.

## CLASS OF 1979

**Sharon Rae Bender** (M.A./reading), vice-president of the Association of Sheridan Condo Co-op Owners, was a candidate in the recent 48th ward aldermanic race.

**Anita Louise Bianco** (M.A./special education) is the vice-president and project director of a major telemarketing firm.

**John Bieniek** (B.A./sociology) is a firefighter and paramedic.

**Irving L. Finston** (M.A./social science), an insurance/pension specialist for the Defense Logistics

Agency in Chicago, has been recognized by the American Institute for Property and Liability Underwriters and the Society of Chartered Property and Casualty Underwriters for completing the necessary requirements to requalify for the Continuing Professional Development Program.

**Adele E. Greco** (B.A./business and management), senior food program specialist for the Food and Nutrition Service of the U.S. Department of Agriculture, has received a certificate of merit for her work.

**Noel P. Gribble** (B.A./university without walls) is project director for the Senior Friendship Centers of Southwest Florida.

**Richard W. Haack** (M.A./political science), a police officer for the Northlake Police Department, has received a Distinguished Leadership Award for his extraordinary service to the police profession. He has been included in the first edition of *The International Directory of Distinguished Leadership*.

**Nancy R. Harrington** (B.A./psychology/anthropology) is a social work supervisor for Lutheran Social Services of Illinois, working with the chronically frail and dying elderly.

**Sheila Henaghan** (B.A./secondary education), along with her two partners, is the theatrical producer of "Little Shop of Horrors" which is currently at the Royal George Theatre. She also co-produced "Pump Boys and Dinettes" which celebrated its second anniversary at the Apollo Theatre in Chicago. The *Chicago Tribune* listed her as one of the 87 people to watch in 1987.

**Charles Steven Kahalnik** (B.A./political science) was appointed assistant executive director—Camp Chi of the Jewish Community Centers of Chicago.

**Ruby J. Liddell** (B.A./early childhood education) is a pre-kindergarten teacher at Mary C. Terrell School in Chicago.

**Bjorg Luppino** (B.A./Spanish), a Spanish teacher at Loyola Academy, is working on his master's degree in Spanish literature at Loyola University in Chicago.

**Pat Michalski** (M.A./earth science), an earth science and geography teacher at Orr High School in Chicago, also teaches Northeastern's evening section of Great Mysteries of the Earth at the El Centro campus.

**Michael B. Murphy** (B.A./business and management) has written an article that was recently published in the *Baker Street Gazette* called "Sherlock Holmes: Affirming America at Home and Abroad 1939-1945." He has also written a second article entitled, "Sherlock Holmes: Healing the Gifted with Bibliotherapy."

**Michael Ricou** (M.S./earth science), working as an exploration geologist for Phillips Petroleum in Oklahoma, has returned from an oilfield in Ivory Coast, Africa, after a four-year stay.

**Joanne K. Rudnick** (B.A./university without walls), an art and drafting teacher at Holy Trinity High School, has received her master's degree from Columbia College in interdisciplinary arts education.

**Donna Schiller** (B.A./sociology/psychology) is a researcher.

## CLASS OF 1980

**Sharon F. Banks** (B.A./university without walls), a lawyer with the firm of Per K. Hanson Associated, P.C., lectures for the Illinois Institute of Continuing Legal Education and has been published in the *Illinois Bar Journal*.

**Arthur John Borkowski** (M.A./speech) is the director of cultural affairs for the Copernicus Foundation.

**Keith Duval Brooks** (B.A./board of governors) is a probation officer for the Juvenile Court of Cook County, Illinois.

**Deborah L. Goldberg** (M.A./history) is an attorney for the Robert Dini law firm in Winnetka, Illinois.

**Mary A. Long** (B.A./board of governors), a lawyer with Per K. Hanson Associated, P.C., serves on the Probate Practice Committee for the Chicago Bar Association.

**Greg Ridenour** (B.S./earth science; 1984, M.S./earth science) works as a research technician for the University of Texas Medical Branch (Shriners Burn Institute) in Galveston, Texas. His article, "Evidence for Selective Volatilization and Imperfect Mixing in Indochinites," appeared in the journal *METEORITICS*.

**Lance L. Vleck** (B.A./sociology) is an intelligence specialist with the U.S. Department of Energy, Physical Security, and Operations.

**Maria Zajczenko-Varela** (B.A./history) works at Landmark Heritage Realty as a sales agent.

## CLASS OF 1981

**Elvarina Acosta** (B.A./art/Spanish), whose work has been exhibited in John Hancock Fine Art '86 and the South Side Art League in Indiana, has had her paintings selected for the Art Institute Sales and Rental Gallery.

**Sandra R. Berk** (M.A./linguistics) is teaching French and English at a north side high school.

**Linda Doss** (B.A./physical education), a teacher at the Mozart Grammar School, has gained top honors in several bodybuilding competitions since 1984.

**Rosa Hollander** (B.A./early childhood education) is executive secretary for Congregation Bnei Ruven and president of the Republican Women's Organization in the 50th ward.

**Monica M. Kuchera** (B.A./psychology) received a doctor of philosophy degree from Loyola University in Chicago. Her dissertation was entitled, "The Effectiveness of Meditation Techniques to Reduce Blood Pressure Levels: A Meta-Analysis."

**Miriam B. Lifshutz** (M.A./counselor education), a teacher in the Adult Continuing Education Department at Truman College, is also a counselor in private practice.

**Jack R. Pociask** (B.A./criminal justice) is an attorney with the Fidelity and Deposit Company of Maryland.

**Les Wielgos** (B.S./earth science) is a waste engineer in the collection department for the city of St. Louis, Missouri.

## CLASS OF 1982

**Ann R. Chernow** (B.A./environmental studies) is working on a master's degree in public administration/community development at Eastern Kentucky University in Richmond, Kentucky.

**Melinda Dworkin** (B.A./psychology) is the owner of We Are Nuts, Inc., which sells nuts, candy, and coffee.

**Judith Ann Hollis** (B.S./information science/business and management) is a consultant for the Centel Corporation and is working on a master's degree in business administration from Loyola University in Chicago.

**Ruth Anne Hopkins** (B.A./university without walls), employed by the Department of Human Services for Chicago, has received an outstanding leadership award for her services in the Englewood community.

**Estella A. Hunt** (M.A./special education), an upper-grade special education teacher of behavior disordered students at Mary Lyon School in Chicago, is working on a doctor of education degree in administration and supervision at Loyola University in Chicago.

**Darryl A. Moy** (M.S./physical exercise and cardiac rehabilitation) has recently been promoted to operations manager for Cardiac Fitness Corporation in New York.

**Russ Pedersen** (B.A./environmental studies) is working on a master's degree in geology at Southern Illinois University in Carbondale, Illinois. His thesis is entitled, "Geophysical Survey of Stonefort Quadrangle."

**Dennis Van Der Vieren** (B.S./information science/business and management) is an independent computer consultant in California.

## CLASS OF 1983

**Mary Beltran** (B.A./early childhood education) received her master's degree in early childhood education and leadership from the National College of Education.

**Florida Brown** (B.A./board of governors), retired after 33 years of federal government service, is now active in volunteer work and holds offices, as well as being on the board of directors of various community organizations. She received a plaque from the Salem House Board of Governors for outstanding development of auxiliary support.

**Elizabeth Anne Carpenter** (B.A./board of governors), a regional manager for Kimberly Services, Inc., is working on a master's degree in business administration.

**Thomas S. Grodecki** (M.A./history) is a member of the research and analysis team at the U.S. Army Center of Military History in Washington, D.C.

**Eileen M. Herdegen** (B.A./business and management/speech) is a travel counselor with Continental Travel Bureau.

**Nadine G. Konieczny** (B.A./sociology) is a retail banking officer in cash management at Northwest National Bank.

**Steven A. Kruzek** (B.S./accounting/economics) is a sales manager with Prudential Insurance and Financial Services.

**Gerald J. Kuecher** (M.S./earth science) works for Marathon International Oil Company in Jakarta, Indonesia.

**Alexandria Lialios** (B.A./English literature) is a second grade teacher at Canty Elementary School in Chicago.

**Barbara Marx** (B.A./music) is manager of The Singing Machine Store which sells and demonstrates home recordings.

**Dwayne H. Moore** (B.A./political science) is a researcher and analyst for the operations division of the Springfield Housing Authority.

**Hossein Najjarpour** (B.S./earth science) participated in field work for a decontamination project involving polluted groundwater in Greenville, Michigan.

**Beverly Ellen Tierney** (B.A./English) is a vocational rehabilitation counselor with the State Department of Rehabilitation Services.

**Donald Willie** (B.A./psychology/sociology) is director of the drug and alcohol abuse program at K.M.I. in Louisville, Kentucky.

## CLASS OF 1984

**Diana FECarotta Barone** (M.A./mathematics) is a teacher at the Suder Elementary School in Chicago.

**Robert Barone** (B.S./physics) is a math and science teacher at Kelvin Park High School in Chicago.

**Henry Birger** (B.S./information science), assistant manager of information systems at Swedish Covenant Hospital in Chicago, has earned the designation "Certified Office Automation Professional" for his outstanding work.

**Leeann Cizek** (B.A./marketing) is an engine tracker at the Tucson Air National Guard Base.

**Lynn Marie Dines** (B.A./sociology) is a technical writer in California.

**Steve Lombardo** (B.A./earth science) taught two lab sections of General Survey in the earth science department at Northeastern.

**Hamid Davaei-Markazi** (M.S./earth science) is working on his doctor of philosophy degree in environmental engineering at Illinois Institute of Technology.

**Jeanine Estelle Nigro** (B.A./kaskasia) is a child life specialist in the kidney dialysis unit at Rush Presbyterian-St. Lukes Medical Center in Chicago.

**Allan Pallante** (B.A./board of governors), executive vice-president of the Bank of Ravenswood in Chicago, is completing course work in statistics and research in preparation for entry into the accelerated master's degree in business administration program at the University of Chicago.

**Ron Schultz** (B.S./earth science) teaches earth science, physical science, college algebra, and computer science at Felician College.

**Steve Sroka** (M.S./earth science), working on a doctorate degree in geology at the University of Illinois at Urbana, is a teaching assistant for a section of historical geology.

**Sharon Stanley** (B.A./environmental studies) is a naturalist at the North Park Village Nature Center in Chicago.

**Isabel C. Suastegui** (B.S./biology) is a dental student at Loyola University.

## CLASS OF 1985

**Linda Burgbacher** (B.A./early childhood education) is a teacher with the Free-To-Be Child Care Center kindergarten program in Chicago which emphasizes pre-reading, pre-math, and pre-science skills.

**Zhen-Li E. Chiang** (B.S./information science) is a programmer for Peter R. Johnson and Associates in Westwood, Massachusetts.

**Mary Eichmann** (M.A./social science) is working on a doctor of philosophy degree at Northwestern University Medical School in Evanston, Illinois.

**Delores Garver** (B.A./kaskasia), a nurse in the department of psychiatry at St. Anne's Hospital, teaches the blind at the Illinois Institute for Visually Handicapped while pursuing a bachelor of science or a master of science in nursing.

**Ronald S. Kliner** (B.A./political science), after graduating from Roosevelt University as a paralegal, became the president, broker, and owner of Personal Service Realty.

**Mary H. Manion** (M.A./special education), a learning disabilities specialist at St. Viator High School in Arlington Heights, has had two articles on instructional computer applications in special education published in *Educational Technology*.

**Fabio A. Naranjo** (B.A./political science) is finishing up his master's degree in the School of Social Service Administration at the University of Chicago.

**Dennis C. Penning** (B.A./board of governors) is the training coordinator and health educator with the Family Planning program at Cook County Hospital in Chicago.

**Alfonso Portela** (B.S./information science) works as a programmer and analyst for CNA Insurance Companies in Chicago.

**Joan F. Scanlon** (B.A./early childhood education) is a third grade teacher at Queen of All Saints School in Chicago.

**David Scheithauer** (B.S./accounting) has been promoted to manager of estimating for General Business Forms, Inc., in Skokie.

**Larry S. Seifert** (M.S./mathematics) is a statistician at the University of Illinois at Chicago-School of Public Health/Center for Health Services Research, and has been admitted to the doctorate program in mathematics.

**Tracy Waters** (M.A./secondary education), a physical education teacher at South High School, is the president of the Illinois High School Coaches Association.

**Franklin Woodland** (B.S./information science) works as a programmer and analyst for CNA Insurance Companies in Chicago.

## CLASS OF 1986

**William J. Brandt** (B.S./management) is an insurance producer for Brandt Insurance Agency, Inc., in Des Plaines, Illinois.

**Rosalyn Davis** (B.A./board of governors) was an intern at the Education Network for Older Adults in Chicago.

**Linda Dean** (M.S./cardiac rehabilitation and exercise physiology), an exercise physiologist, spoke at the "Do It For Your Heart" community-wide health education program at Resurrection Hospital.

**Ann Marie Fahey** (B.A./elementary education) is employed at Nichols School in Evanston.

**Kevin A. Jackson** (B.A./criminal justice) is an administrative personnel staffing specialist for the United States Office of Personnel Management.

**Michelle A. Lores** (B.A./general education) is a kindergarten as well as a computer teacher for grades four through eight at the St. Joan of Arc School in Skokie, Illinois.

**Paul O. Otubusin** (M.A./political science) received his doctorate in political philosophy from Loyola University.

**So Un Park** (M.A./linguistics) is a bilingual teacher for the Edwin Adler Elementary School in Schaumburg, Illinois.

**Mary Phelan** (B.A./board of governors) is an instructor of life drawing at the American Academy of Art in Chicago and an accomplished editorial illustrator. Her artwork is represented in many national publications, corporate and private collections, and the Library of Congress.

**April Richards** (M.A./geography and environmental studies) has recently been appointed the village planner for Plainfield, Illinois.

## CLASS OF 1987

**Chris Matej** (B.S./earth science), a graduate student at the School of Mines at the University of Missouri, is pursuing a master's degree in materials engineering with a specialization in ceramics.

**Pat Thomason** (M.A./special education), a teacher at Rhodes School, was one of 15 teachers chosen for a certificate of award from the Illinois Board of Education.

## IN MEMORIAM

**Patrice Lyn Anderson**  
1969, B.A./Linguistics

**Earl Brown**  
1979, B.A./University Without Walls

**Virginia Cuthbert Ellis**  
1982, B.A./Human Services

**Lorraine Glassenberg**  
1978, M.A./Social Science

**Ellen F. Grafman**  
1978, B.A./Language Arts

**Edward J. O'Malley**  
1970, M.A./Special Education

**Rose S. Schwartz**  
1971, M.A.T./Biology

**Prashna S. Shah**  
1984, B.S./Biology

**Florence Jean Stricker**  
1982, B.A./Mathematics

**Nancy Tripp**  
1969, M.A.T./Mathematics

**Celeste Angela Valos**  
1973, B.A./Psychology

**Willie Wilkins**  
1971, M.E.D./Inner City Studies

# SPRING SPORTS WRAP-UP

## TENNIS TEAM QUALIFIES FOR NAIA NATIONALS



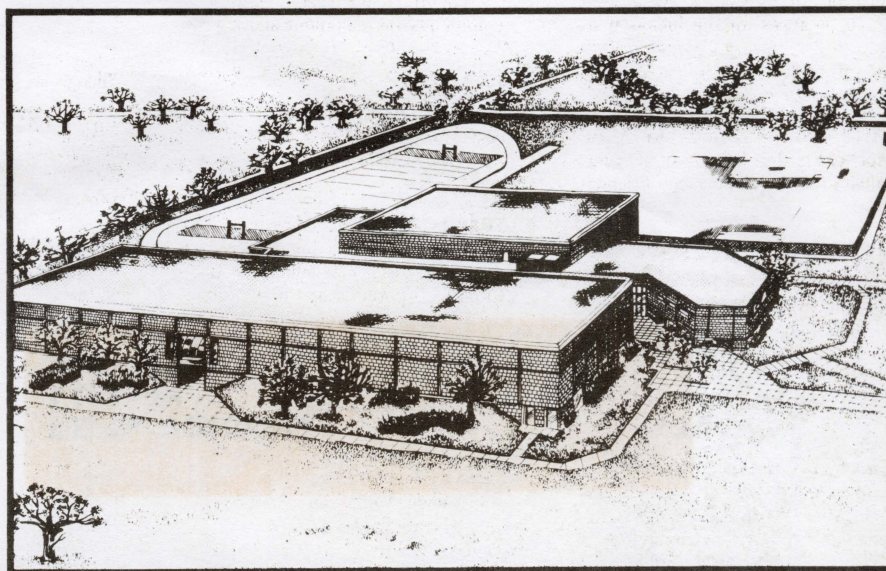
The Northeastern men's tennis team finished first in the Chicagoland Collegiate Athletic Conference meet held May 2 at Northeastern. The final team scores were Northeastern 23, St. Francis 18, Olivet Nazarene 4, Roosevelt 2, and Illinois Institute of Technology 0. With this win, Northeastern advanced to the National Association of Intercollegiate Athletics (NAIA) district 20 (Illinois) tournament held in Springfield on May 8 and 9 and defeated St. Francis 20-18. The team will now travel to Kansas City, Missouri where it will compete for the NAIA national championship beginning May 18.

## ATHLETICS REVIEWED

Northeastern's intercollegiate athletics programs were reviewed in conjunction with the opening of the new Physical Education Complex. A committee was formed to evaluate the university's current involvement in intercollegiate athletics and to recommend possible changes for the future. Some of the areas the committee reviewed were: the number of sports in which we participate, which sports are appropriate for us to compete in, and at what level we might compete. This was an important review because the new physical education facility will provide opportunities that did not previously exist.

The committee, chaired by John Waechter, chairman of the health, physical education, recreation, and athletics department, also included outside college athletics experts and representatives from various university and community constituencies. The goal is to take complete advantage of the new building and achieve excellence in all our physical education programs.

The committee members were Edgar Gangware, music department; Joseph Morton, history department; Lynne Reynolds, special education department; Pat Jefferson, personnel employee representative; George West, financial aid office; and Ken Stetson, provost's office. Other members were Phyllis Howlett, assistant commissioner of the Big Ten; Mary Jean Mulvaney, chairman of the physical education and athletic department of the University of Chicago; Randall Lowery, senior vice-president of Albany Bank and Trust Company; Lee Jefferson, student representative; and Judith Macior, president of the Alumni Association. The committee was expected to complete its work and make its recommendations by June 3.



## PHYSICAL EDUCATION BUILDING PROGRESSES

Construction of the physical education building continues. It is currently expected to be ready for occupancy around September 1987. Preliminary discussions have begun concerning the dedication of the building, which will be held after it has been opened.

## BASEBALL



The Northeastern baseball team finished its 1987 season losing its last four games. The losses leave the Golden Eagles with an overall record of 13 wins and 24 losses. The Eagles' record in the Chicagoland Collegiate Athletic Conference is two wins and seven losses.

## CHUCK KANE MEMORIAL SCHEDULED

The 15th Annual Chuck Kane Memorial Golf Outing will be held Friday, August 14, at the Glenview Naval Air Station. The cost will be \$35 per person for golf, dinner, and door prizes.

Mary Susong, physical education department, at 583-4050, extension 3463.

The Chuck Kane Memorial, which is jointly sponsored by the physical education department and the Alumni Association, is the principal source of funding for the Chuck Kane Memorial Scholarships. Proceeds for the event and individual contributions will be used to provide cash grants for the winner of the Chuck Kane Award.

Individuals interested in attending this event or in receiving additional information can do so by contacting

## ALUMNI VARSITY BASKETBALL GAME

Set for  
**November 6, 1987**

## GOLF



The golf team, which competes primarily in the fall, finished seventh in District 20 NAIA Competition. The district tournament was held on April 27 and 28.

# NORTHEASTERN ILLINOIS UNIVERSITY

## 1987 FOOTBALL SCHEDULE

Date	Team	Place	Time
September 5	Wheaton	Home	1:30 p.m.
September 19	Alma	Alma, MI	1:30 p.m.
September 26	St. Francis	Joliet	7:30 p.m.
October 3	*Principia	Home	1:30 p.m.
October 10	*Lakeland	Sheboygan, WI	1:00 p.m.
October 17	*Concordia Illinois	Home	1:30 p.m.
October 24	*Eureka	Home	1:30 p.m.
October 31	*Concordia Wisconsin	Home	1:00 p.m.
November 7	Olivet	Kankakee	1:00 p.m.

\*Illini-Badger Conference Games

ADDRESS CORRECTION REQUESTED



During the summer 1987 term, June 29 through September 4, Northeastern Illinois University will again operate on a Monday through Thursday four-day week. The four-day week has resulted in reduced utility costs. The normal business hours for the university will be 8:00 a.m. to 6:00 p.m., Monday through Thursday.

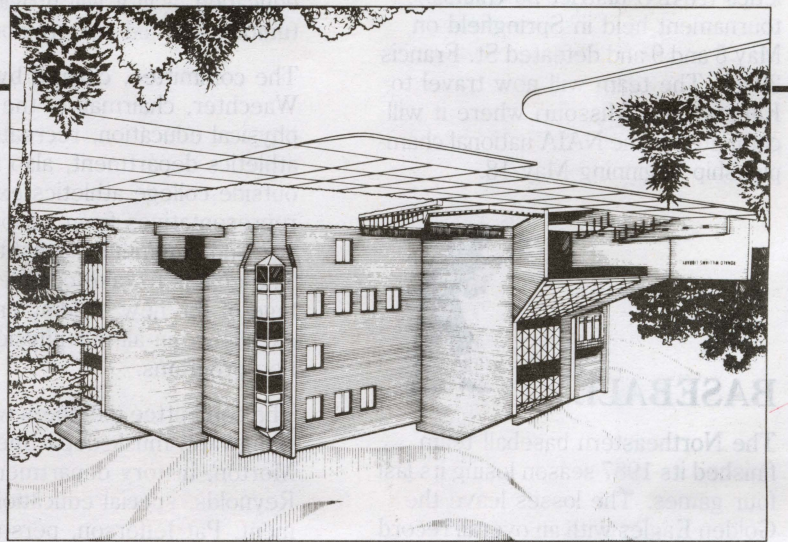
**Monday-Thursday** 7:45 a.m.-10:30 p.m.  
**Sunday** 12:00 p.m.-5:00 p.m.

From June 29-September 4:

**Monday-Thursday** 7:45 a.m.-10:30 p.m.  
**Friday** 7:45 a.m.-6:00 p.m.  
**Saturday** 9:00 a.m.-5:00 p.m.  
**Sunday** 12:00 p.m.-5:00 p.m.

Library hours for the summer months will be as follows from now until June 29th.

## LIBRARY HOURS



NORTHEASTERN ILLINOIS UNIVERSITY  
 5500 N. ST. LOUIS AVENUE  
 CHICAGO, ILLINOIS 60625-4699

**NORTHEASTERN NEWS**

Non-Profit Organization  
 U.S. POSTAGE  
 PAID  
 Chicago, Illinois  
 Permit No. 2929

# CULTURAL AND SPECIAL EVENTS Calendar



## June

**25** - 5:00-10:00 p.m. Celebration of Black Life, Love, and Struggle  
 CICS Auditorium  
 Center for Inner City Studies 700 East Oakwood Boulevard

## July

**1** - 1:00 p.m. "The Secrets of the Pyramids and the Sphinx"  
 CC-217  
 Dr. Zahi Hawass  
 General Director of Egyptian Archaeology, Egypt

**6-19**

American Spanish Dance Festival

**13-23**

American College of Sports Medicine Conference  
 Human Performance Laboratory

**14-16** - 9:30 a.m. Songwriter's Workshop  
 Sheila Davis

**28** - 11:00 a.m.  
 Room 218

Internal Revenue Service Lecture

## August

**12** - 9:00 a.m.  
 Golden Eagles Room

Blood Drive

**14**

15th Annual Chuck Kane Memorial Golf Outing  
 Glenview Naval Air Base

## September

**8-9**

Open Registration

**14-15**

Change of Registration

## October

**24**

Homecoming