

Supplementary material

Zeliaś A, Zajdel W, Malinowski K, et al. Hemodynamic effects of larger volume intra-aortic balloon pump during high-risk percutaneous coronary interventions. *Kardiol Pol.* 2023.

Please note that the journal is not responsible for the scientific accuracy or functionality of any supplementary material submitted by the authors. Any queries (except missing content) should be directed to the corresponding author of the article.

Table S1. In-hospital and follow-up MACE and safety endpoints

VARIABLE	MEGA	STDR	CTRL	TOTAL	P-value
N (%)	16 (34)	10 (21)	21 (45)	47 (100)	–
In-hospital MACE	3 (18.8)	1 (10.0)	5 (23.8)	9 (19.2)	0.63
Cardio-vascular death	1 (6.3)	0 (0.0)	0 (0.0)	1 (2.1)	0.33
Myocardial infarction	2 (12.5)	1 (10.0)	4 (19.1)	7 (14.9)	0.76
Re-PCI	0 (0.0)	1 (10.00)	0 (0.0)	1 (2.1)	0.20
Exacerbation of heart failure	1 (6.3)	0 (0.00)	0 (0.0)	1 (2.1)	0.35
Stroke	0 (0.0)	0 (0.0)	1 (4.8)	1 (2.1)	0.33
Follow-up MACE	8 (53.3)	2 (20.0)	12 (57.1)	22 (47.8)	0.12
Cardio-vascular death	3 (20.0)	2 (20.0)	4 (19.1)	9 (19.6)	0.99
Non-cardio-vascular death	1 (6.7)	0 (0.0)	4 (19.1)	5 (10.9)	0.14
Myocardial infarction or re-PCI	3 (20.0)	0 (0.0)	1 (4.8)	4 (8.7)	0.13
Exacerbation of heart failure	2 (13.3)	1 (10.0)	6 (28.6)	9 (19.6)	0.36
Stroke	1 (6.7)	0 (0.00)	1 (4.8)	2 (4.4)	0.59
In-hospital safety endpoints					
Major hemorrhages (BARC >3)	6 (37.5)	2 (20.0)	7 (33.3)	15 (31.9)	0.62

Minor hemorrhages (BARC <3)	2 (12.5)	3 (30.0)	2 (9.52)	7 (14.9)	0.35
Vascular access complications					
Hematoma	1 (6.3)	3 (30.0)	3 (14.3)	7 (14.9)	0.27
Aneurism	0 (0.0)	0 (0.0)	0 (0.0)	0 (0.00)	–
Arterio-venous fistula	1 (6.3)	0 (0.0)	0 (0.0)	1 (2.1)	0.33
Acute limb ischemia	2 (12.5)	0 (0.0)	0 (0.0)	2 (4.3)	0.11
Access site infection	1 (6.3)	0 (0.0)	0 (0.0)	1 (2.1)	0.33
Acute renal failure	1 (6.3)	0 (0.0)	2 (9.5)	3 (6.4)	0.44

Abbreviations: BARC, bleeding definition according to Academic Research Consortium; MACE, major adverse cardiovascular events

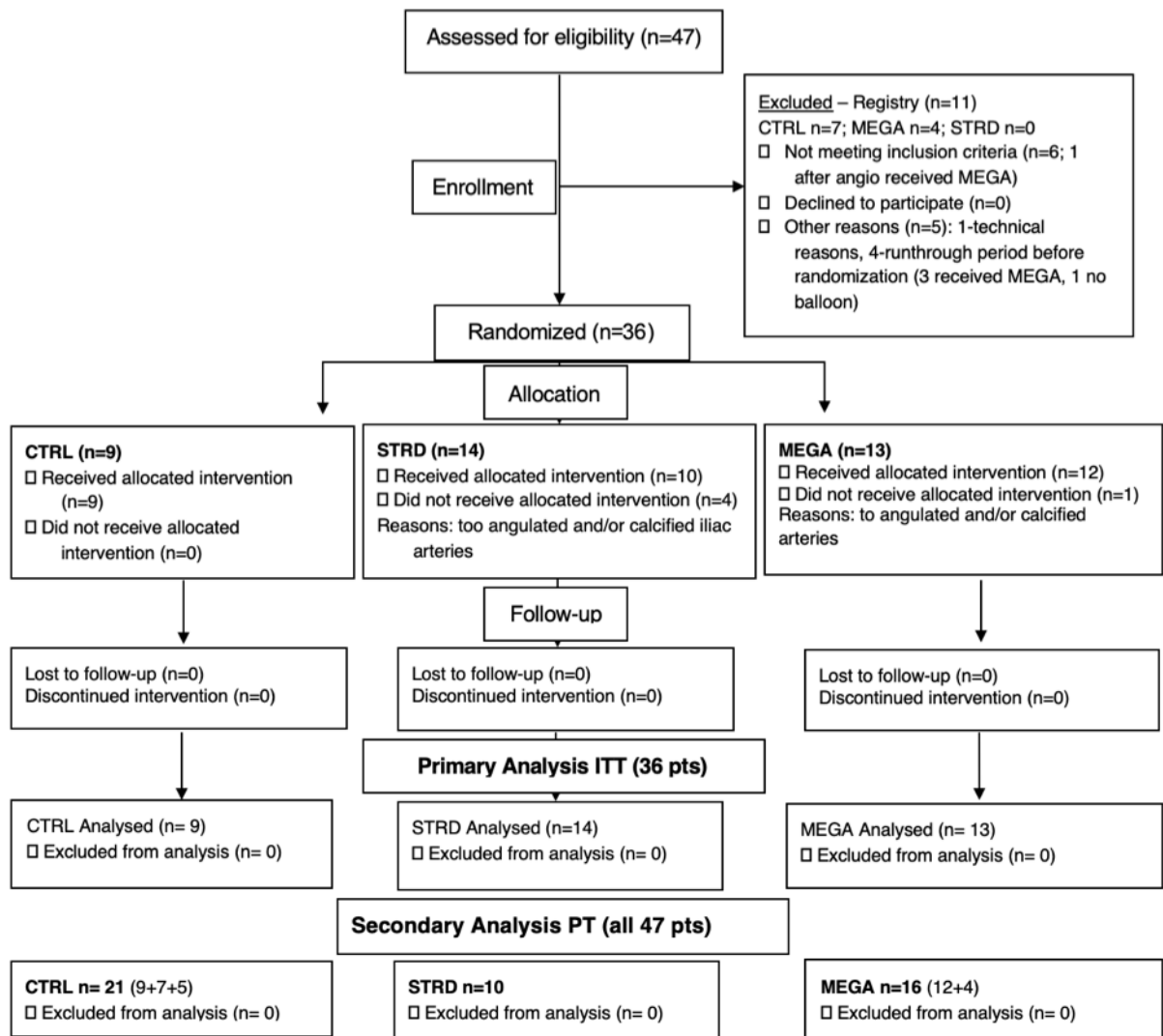


Figure S1. Study flow chart