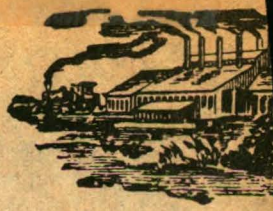


Fall 11-5-1975

## **Miner Leads Close Judge Race (Register Star)**

Harvey McCagg

# Register



Vol. 21 No. 325

Hudson, N.Y. Columbia County 12

## Miner Leads Cl



### Awaiting Election Results

Republican - Conservative candidate for Supreme Court, Roger Miner, (standing, center) checks the results Tuesday night as they are recorded by Columbia County Republican chairman John Sharpe (with phone). Official results are still not available but it appears Miner and Judge Ellis Staley were

winners in the four way race for two judgeships. Miner's wife, Jacqueline, stands at left; his father, Abram Miner, right, and MaryAnn Knauss, Miner's campaign director, seated. (Register-Star Photo By Harvey McCagg)



# STAR

534 Wednesday, November 5, 1975

30 Pages

15 Cents

## ose Judge Race

By HARVEY McCAGG  
HUDSON - Columbia County's favorite son, Roger Miner, appears to have won a nip and tuck race for State Supreme Court justice, a contest that may not be officially decided for another 24-hours.

Miner's victory would give Columbia County a resident Supreme Court judge for the first time in almost four decades.

Miner, the Republican-Conservative candidate, and incumbent Judge Ellis Staley of Loudonville, appear to have defeated their Democratic opponents, incumbent Judge Milton Levine of Monticello and Daniel Prior of Albany by a margin of 5,000 votes.

The unofficial results of the cliff hanger give Miner about 132,000 votes, Staley 131,000, Levine 127,000 and Prior 120,000.

Albany County, the key county in the district, does not expect to have official results until sometime Thursday and had only 60 per cent of districts reported in as of noon today.

### Top Vote Getter

Miner, Columbia County's district attorney since 1968, ap-

parently was the top vote getter in five of the seven counties in the Third Judicial District, outdistancing his running mate and Democratic opponents in Columbia, Greene, Ulster, Schoharie and Rensselaer.

In Columbia, the hometown candidate gathered 15,434 votes to Staley's 10,296, Levine's 6,323 and Prior's 5,105.

Across the Hudson River in

Sullivan gave him 12,127 votes, Miner 8,300, Staley 7,600 and Prior 8,500.

The partial returns in Albany show Levine with 57,762, Prior 56,721, Miner 40,800 and Staley 48,083.

### Candidates Wait

There have been no victory or concession statements made by any of the candidates as they await the results of the out-

and to congratulate victors and console losers.

The contest for Supreme Court judge was of main interest but as tabulations lagged, the crowd at headquarters thinned out.

Miner and his wife, Jacqueline, arrived at the Warren St. headquarters about 11 p.m. and were greeted by supporters confident that his early lead would withstand the Democratic bloc in Albany.

Miner expressed thanks but cautioned that the returns were far from complete.

As the evening progressed, party workers began making telephone calls to party headquarters and newspapers in other counties searching for results.

However, by 2:30 a.m. with most election commission offices closed and newspapers with no further reports, Republicans closed their headquarters with the knowledge that Miner was leading but that only 5,000 tenuous votes separated the four candidates.

Republican Chairman Sharpe said the election figures in all the counties, except Albany,

Please Turn To Back Page

## More Election Stories On Pages A-11, 12, 13

Greene County, Miner tallied 8,975, Staley 8,579, Levine 6,194 and Prior 6,067.

In Ulster County, Miner received 27,975, Staley 27,222, Levine 21,384 and Prior 19,997.

Schoharie County voters gave Miner 6,178, Staley 6,173, Levine 4,405 and Prior 4,177.

In Rensselaer, Miner received 24,078 votes, Staley 23,860, Levine 18,623 and Prior 19,208.

Levine's home county of

standing districts.

An estimated two-thirds of the 30,000 eligible voters in Columbia County, the only county in the district without a resident Supreme Court judge, turned out, with Miner receiving approximately 75 per cent of the votes.

As the polling places closed, many Republicans made their way to Hudson party headquarters to await the results

## ... Miner Leads

appeared stable and that it indicated Miner had won.

However, he cautioned that the situation in Albany County could change the picture.

Sharpe expressed gratitude "to the people of all the parties, Democrats, Conservatives and

Independents, who rallied behind Miner. He noted that a few thousand votes could determine the results.

Miner, who with a handful of supporters remained at the telephones at his home until after 4 a.m. today, participated this morning in the opening of the November term of Supreme Court here.

He expressed appreciation to supporters but declined comment on the outcome of the race pending additional results.