

7-1-2023

Etiologies and Predictors of 30-Day Readmission in Heart Failure: An Updated Analysis

Akhil Jain

Shilpkumar Arora

Viral Patel

Maharshi Raval

Karnav Modi

See next page for additional authors

Follow this and additional works at: <https://jdc.jefferson.edu/einsteinfp>

 Part of the [Cardiology Commons](#)

[Let us know how access to this document benefits you](#)

This Article is brought to you for free and open access by the Jefferson Digital Commons. The Jefferson Digital Commons is a service of Thomas Jefferson University's [Center for Teaching and Learning \(CTL\)](#). The Commons is a showcase for Jefferson books and journals, peer-reviewed scholarly publications, unique historical collections from the University archives, and teaching tools. The Jefferson Digital Commons allows researchers and interested readers anywhere in the world to learn about and keep up to date with Jefferson scholarship. This article has been accepted for inclusion in Einstein Health Papers by an authorized administrator of the Jefferson Digital Commons. For more information, please contact: JeffersonDigitalCommons@jefferson.edu.

Authors

Akhil Jain, Shilpkumar Arora, Viral Patel, Maharshi Raval, Karnav Modi, Nirav Arora, Rupak Desai, Behnam Bozorgnia, and Raphael Bonita

Original Article



Etiologies and Predictors of 30-Day Readmission in Heart Failure: An Updated Analysis

Akhil Jain , MD^{1,*}, Shilpkumar Arora , MD^{2,*}, Viral Patel , MD³,
Maharshi Raval , MD⁴, Karnav Modi , MBBS⁵, Nirav Arora , MS⁶,
Rupak Desai , MBBS⁷, Behnam Bozorgnia, MD⁸, and Raphael Bonita , MD⁸

¹Department of Internal Medicine, Mercy Fitzgerald Hospital, Darby, PA, USA

²Department of Interventional Cardiology, Houston Methodist Hospital, Houston, TX, USA

³Department of Internal Medicine, New York Presbyterian Hospital, Queens, NY, USA

⁴Department of Internal Medicine, Landmark Medical Center, Woonsocket, RI, USA

⁵Division of Research, Moffitt Cancer Center & Research Institute, Tampa, FL, USA

⁶Department of Data Science, Lamar University, Beaumont, TX, USA

⁷Division of Cardiology, Atlanta VA Medical Center, Atlanta, GA, USA

⁸Division of Cardiology, Einstein Medical Center, Philadelphia, PA, USA



Received: Mar 9, 2023

Revised: Apr 16, 2023

Accepted: May 13, 2023

Published online: Jun 1, 2023

Correspondence to

Akhil Jain, MD

Department of Internal Medicine, Mercy Fitzgerald Hospital, 1500 Lansdowne Ave, Darby, PA 19023, USA.

Email: akhiljaindr@gmail.com

*Akhil Jain and Shilpkumar Arora share equal contributions to the manuscript.

Copyright © 2023. Korean Society of Heart Failure

This is an Open Access article distributed under the terms of the Creative Commons Attribution Non-Commercial License (<https://creativecommons.org/licenses/by-nc/4.0>) which permits unrestricted noncommercial use, distribution, and reproduction in any medium, provided the original work is properly cited.

ABSTRACT

Background and Objectives: Readmissions in heart failure (HF), historically reported as 20%, contribute to significant patient morbidity and high financial cost to the healthcare system. The changing population landscape and risk factor dynamics mandate periodic epidemiologic reassessment of HF readmissions.

Methods: National Readmission Database (NRD, 2019) was used to identify HF-related hospitalizations and evaluated for demographic, admission characteristics, and comorbidity differences between patients readmitted vs. those not readmitted at 30-days. Causes of readmission and predictors of all-cause, HF-specific, and non-HF-related readmissions were analyzed.

Results: Of 48,971 HF patients, the readmitted cohort was younger (mean 67.4 vs. 68.9 years, $p \leq 0.001$), had higher proportion of males (56.3% vs. 53.7%), lowest income quartiles (33.3% vs. 28.9%), Charlson comorbidity index (CCI) ≥ 3 (61.7% vs. 52.8%), resource utilization including large bed-size hospitalizations, Medicaid enrollees, mean length of stay (6.2 vs. 5.4 days), and disposition to other facilities (23.9% vs. 20%) than non-readmitted. Readmission (30-day) rate was 21.2% (10,370) with cardiovascular causes in 50.3% (HF being the most common: 39%), and non-cardiac in 49.7%. Independent predictors for readmission were male sex, lower socioeconomic status, nonelective admissions, atrial fibrillation, chronic obstructive pulmonary disease, chronic kidney disease, anemia, and CCI ≥ 3 . HF-specific readmissions were significantly associated with prior coronary artery disease and Medicaid enrollment.

Conclusions: Our analysis revealed cardiac and noncardiac causes of readmission were equally common for 30-day readmissions in HF patients with HF itself being the most common etiology highlighting the importance of addressing the comorbidities, both cardiac and non-cardiac, to mitigate the risk of readmission.

Keywords: Heart failure; Thirty day readmission; 30 day readmission; United States Agency for Healthcare Research and Quality, Etiology; Outcome assessment, health care

INTRODUCTION

Heart failure (HF) is a well-known public health problem and a major financial burden on our healthcare system. The prevalence of HF continues to rise due to the aging United States (US) population and is projected to increase by 46% between 2012 and 2030.¹⁾ In recent years, novel medical and device therapies have led to improved HF prognosis. These include the use of a combination of angiotensin receptor–neprilysin inhibitor,²⁾ SGLT2 inhibitors,³⁾ a novel algorithm for guideline-directed medical therapy,^{4,5)} biventricular pacemakers, remote pulmonary artery pressure monitors, mechanical circulatory assist devices, and the use of disease management programs in the outpatient setting.^{6–8)} However, the risk of readmissions in HF patients remains high resulting in patient morbidity and high healthcare resource utilization.¹⁾ Historically studies have reported readmission rates of nearly 20% in this patient population warranting additional research to identify aspects of care to improve patient outcomes.^{9,11)} Using the 2019 National Readmission Database (NRD) dataset, we investigated the epidemiologic profile of patients readmitted with HF patients to identify high-risk predictors in this patient population.

METHODS

We used the dataset of 2019 from the NRD for this analysis. Agency for Healthcare Research and Quality sponsors NRD under the Healthcare Cost and Utilization Projects.¹²⁾ NRD provides publicly available large de-identified all-payer datasets of hospitalized patients in the US containing 18 million unweighted and 35 million weighted discharges per year that are nationally representative of the US, thereby providing sufficient data for analysis across hospital types and the study of readmissions for various disorders and procedures. Patients are tracked across the time for readmissions using the variable “NRD_visitlink”, while the time between readmissions is calculated using already existing variables “NRD_daystoevent” and length of stay available as “LOS” in the NRD. Owing to the de-identified nature of the dataset, we did not require Institutional Review Board approval to conduct our study.

The details of sample selection and cohort division are shown in **Figure 1**. HF-related hospitalizations (index admissions) were identified using the International Classification of Diseases, Tenth Revision, Clinical Modification (ICD-10-CM) code of “I50”

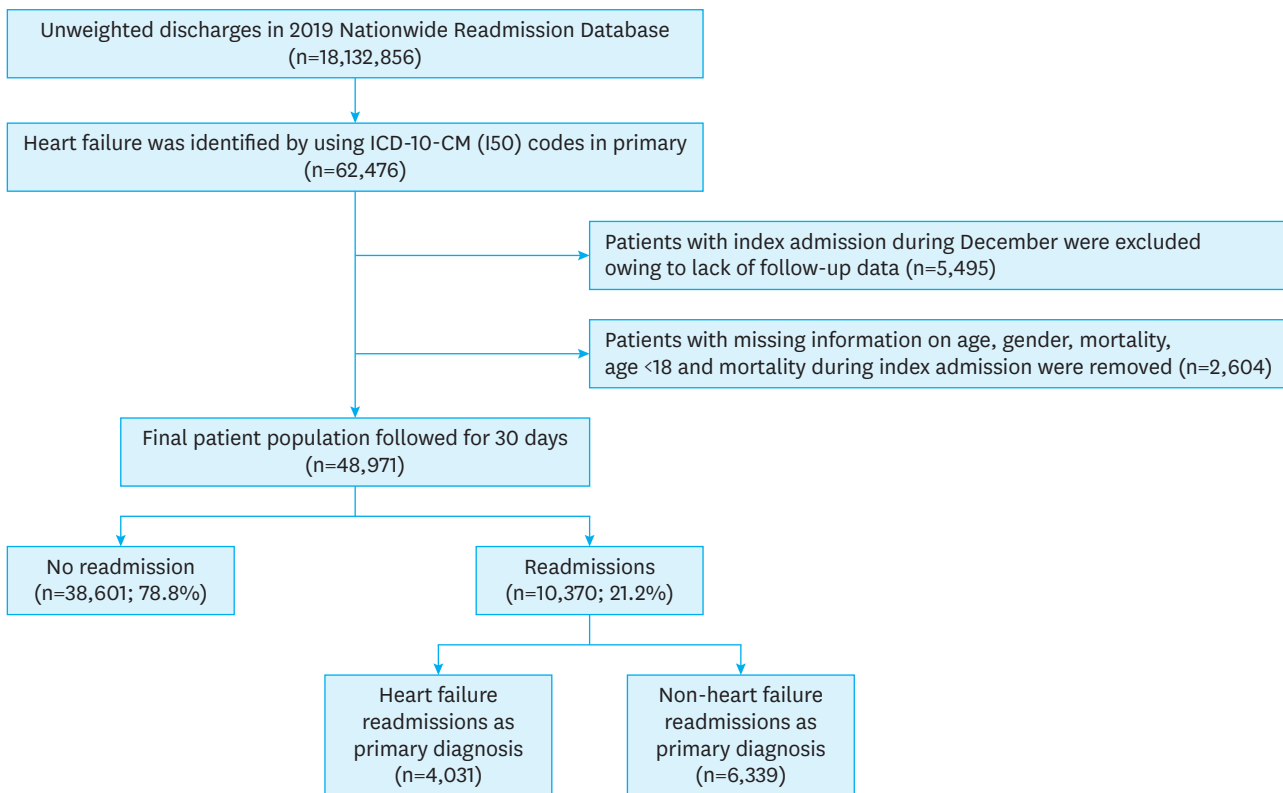


Figure 1. Patient selection and study design.

ICD-10-CM = International Classification of Diseases, Tenth Revision, Clinical Modification.

Heart Failure Readmission Analysis

in the primary discharge diagnosis. Hospitalizations for less than 18 years, missing information on sex, mortality during this index admission, and discharges in December 2019 (due to lack of follow-up) were excluded from this analysis. The primary outcome was 30-day readmissions in the HF study population. Combining similar codes, we identified causes of readmission using ICD-10-CM codes in the primary discharge diagnosis field of these readmissions. Readmissions were either HF-specific readmissions, i.e., with HF being the primary reason for readmission or non-HF readmissions, i.e., primary reason other than HF. Multivariate logistic regression analysis was used for the predictors of HF-specific and non-HF readmissions, and for all-cause readmissions (combined HF-specific and non-HF readmissions).

Demographics and admission-specific, including hospital-related characteristics, provided as in-built variables (**Table 1, Supplementary Table 1**), were compared between HF patients who were readmitted (herein, readmitted cohort) and not readmitted (herein, non-readmitted cohort) within 30-days. Comorbidities were generated as binary variables using ICD-10-CM codes in the secondary discharge diagnosis fields (**Supplementary Table 2**). Charlson comorbidity index (CCI) assessed the severity of comorbid conditions and was employed to compare the 2 cohorts with Deyo's modification and translation to ICD-10-CM codes.^{13,14} Conventional CCI gives the weighted score to the comorbidities based on the relative risk of 1-year mortality. To apply the index to the administrative databases, like in our study, Deyo's modification, a simplified version of the conventional CCI, is commonly used in clinical practice where using ICD-10-CM system medical conditions are coded as present on admission.

Table 1. Baseline characteristics of heart failure patients from National Readmission Dataset 2019

Variables	Readmissions		Overall	p value
	No	Yes		
Index admissions, No. (%)	38,601 (78.8)	10,370 (21.2)	48,971	
Demographic characteristics				
Age (mean years)	68.9	67.4	68.6	<0.001
Sex				<0.001
Male	53.7	56.3	54.2	
Female	46.3	43.7	45.8	
Median household income (percentile)*				<0.001
0–25	28.9	33.3	29.8	
26–50	27.6	26.0	27.3	
51–75	24.8	23.4	24.5	
76–100	18.7	17.3	18.4	
Admission characteristics				
Admission type				0.003
Elective	5.6	4.8	5.4	
Non-elective	94.4	95.2	94.6	
Day of admission				0.205
Weekday	77.3	76.7	77.1	
Weekend	22.7	23.3	22.9	

(continued to the next page)

Table 1. (Continued) Baseline characteristics of heart failure patients from National Readmission Dataset 2019

Variables	Readmissions		Overall	p value
	No	Yes		
Bed size of hospital†				
Small	24.1	22.9	23.9	
Medium	25.5	25.1	25.4	
Large	50.4	52.1	50.8	
Teaching status of hospital‡				
Metropolitan non-teaching	20.3	19.8	20.2	<0.001
Metropolitan teaching	64.7	67.1	65.2	
Non-metropolitan hospital	14.9	13.1	14.5	
Expected primary payer				
Medicare	65.1	65.5	65.2	<0.001
Medicaid	13.6	17.9	14.5	
Private insurance	15.3	11.6	14.5	
Self-pay	3.7	2.7	3.5	
No charge	0.2	0.3	0.2	
Other	2.1	2.0	2.1	
Comorbidities§				
Hypertension	22.5	23.8	22.8	0.005
Diabetes	28.4	32.1	29.2	<0.001
Dyslipidemia	30.4	30.4	30.4	0.95
Atrial fibrillation or flutter	43.8	45.6	44.2	0.001
PVD	5.9	7.0	6.1	<0.001
Prior CAD	37.6	39.9	38.1	<0.001
Prior TIA/Stroke	8.7	9.2	8.8	0.141
Prior CABG	9.0	9.8	9.2	0.021
Prior PCI	0.8	1.0	0.8	0.184
FH of CAD	6.6	6.4	6.6	0.552
COPD	30.5	34.9	31.5	<0.001
CKD	22.6	28.5	23.8	<0.001
Obesity	20.4	19.3	20.2	0.016
OSA	12.8	12.7	12.8	0.831
Anemia	25.3	31.5	26.6	<0.001
Tobacco	44.1	46.2	44.6	<0.001
Alcohol	6.2	6.4	6.2	0.36
CCI¶				
1	20.8	16.1	19.8	<0.001
2	26.4	22.2	25.6	
≥3	52.8	61.7	54.7	
Healthcare infrastructure utilization				
Disposition				
Home	80.0	76.1	79.2	<0.001
Facility/Others	20.0	23.9	20.8	
Length of stay (days, mean±SE)	5.4±0.03	6.2±0.08	5.6±0.03	<0.001

Values are percentages.

PVD = peripheral vascular disease; CAD = coronary artery disease; TIA = transient ischemic attack; CABG = coronary artery bypass graft; PCI = percutaneous coronary intervention; FH = family history; COPD = chronic obstructive pulmonary disease; CKD = chronic kidney disease; OSA = obstructive sleep apnea; CCI = Charlson comorbidity index; SE = standard error. *Represents a quartile classification of the estimated median household income of residents within the patient's zip code, https://www.hcup-us.ahrq.gov/db/vars/zipinc_qrtl/nrdnote.jsp.

†The bed size cutoff points divided into small, medium, and large have been done so that approximately one-third of the hospitals in a given region, location, and teaching status combination would fall within each bed size category, https://www.hcup-us.ahrq.gov/db/vars/hosp_bedsiz/nrdnote.jsp.

‡A hospital is considered to be a teaching hospital if it has an American Medical Association-approved residency program, https://www.hcup-us.ahrq.gov/db/vars/hosp_ur_teach/nrdnote.jsp.

§International Classification of Diseases, Tenth Revision codes were utilized to identify respective co-morbidities as per **Supplementary Table 1**.

¶CCI/Deyo comorbidity index was calculated as per Deyo classification.

Heart Failure Readmission Analysis

SAS 9.4 (SAS Institute Inc., Cary, NC, USA) was used for this analysis. Pearson’s χ^2 and Student’s t-test were used for qualitative and quantitative variables, respectively. In our multivariate model for predictors of all-cause, HF-specific and non-HF readmissions, we included demographics, admission characteristics, comorbidities, categorized CCI (CCI with 1,2 or ≥ 3), disposition pattern, and length of stay variables shown in **Table 1**.

RESULTS

NRD dataset from 2019 included 48,971 index admissions for HF hospitalizations as the primary admitting diagnosis. During index admission, differences in demographics and comorbidities were observed between readmitted and non-readmitted cohorts. The readmitted cohort was younger (67.4 vs. 68.9 years, $p < 0.001$). Readmitted patients had a higher prevalence of males (56.3% vs. 53.7%, $p < 0.001$), lowest quartile of median household income patients (33.3% vs. 28.9%, $p < 0.001$), admissions of nonelective (95.2% vs. 94.4%, $p = 0.003$), large bed-size hospitals (52.1% vs. 50.4%, $p = 0.006$), metropolitan teaching hospitals (67.1% vs. 64.7%, $p < 0.001$), Medicaid enrollees (17.9% vs. 13.6%, $p < 0.001$). Comorbidities most prevalent in the readmitted cohort were hypertension (HTN, 23.8% vs. 22.5%, $p = 0.005$), diabetes mellitus (DM, 32.1% vs. 28.4%, $p < 0.001$), atrial fibrillation or flutter (AFF, 45.6% vs. 43.8%, $p = 0.001$), peripheral vascular disease (PVD, 7% vs. 5.9%, $p < 0.001$), prior coronary artery disease (CAD, 39.9% vs. 37.6%, $p < 0.001$), prior coronary artery bypass graft (CABG, 9.8% vs. 9%, $p = 0.021$), chronic obstructive lung disease (COPD, 34.9% vs. 30.5%, $p < 0.001$), chronic kidney disease (CKD, 28.5% vs. 22.6%, $p < 0.001$), anemia (31.5% vs. 25.3%, $p < 0.001$), tobacco abuse (46.2% vs. 44.1%, $p < 0.001$) and higher CCI, i.e., CCI ≥ 3 (61.7% vs. 52.8%, $p < 0.001$) vs. the non-readmitted cohort. The average length of hospital stay was longer for readmitted cohort (mean 6.2 ± 0.08 vs. 5.4 ± 0.03 days, $p < 0.001$) and a greater percentage of patients required transfer to other facilities (23.9% vs. 20%, $p < 0.001$) during index admissions.

Of the 48,971 hospitalizations, 10,370 (21.2%) were readmitted within a 30-day period. Amongst these, 85.26% ($n = 8,841$) were readmitted once, 12.93% ($n = 1,341$) twice, 1.58% ($n = 164$) 3 times, 0.17% ($n = 18$) 4 times, 0.05% ($n = 5$) 5 times, and 0.01% ($n = 1$), and 6 times (**Table 2**). Regarding etiologies of admissions, HF-specific readmissions constituted 39%, followed by CAD/ischemic heart disease 2.7%, AFF 1%, HTN 0.18%, congenital heart disease 0.1%, and valvular heart disease 0.8%. Pulmonary causes of readmission occurred in 12.4%, which included acute respiratory failure in 4.2%, pneumonia and influenza-related hospitalizations in 3.0%, pulmonary embolism in 0.8%, and obstructive lung disease in 0.14%. Infections constituted 9.3%, followed by

Table 2. Readmission frequencies in heart failure patients during 30-day follow-up period

Readmission frequencies	Number of patients	Percentage of patients
1	8,841	85.26
2	1,341	12.93
3	164	1.58
4	18	0.17
5	5	0.05
6	1	0.01

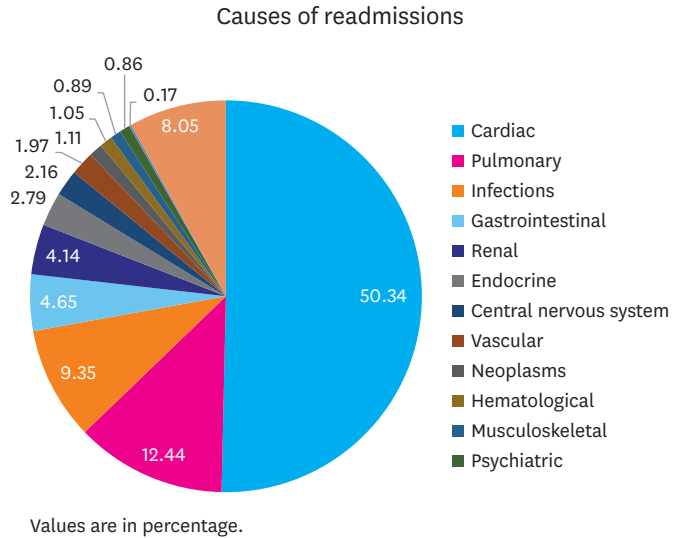


Figure 2. Causes of 30-day readmissions in heart failure patients.

gastrointestinal causes in 4.6% and renal in 4.1% of the readmissions (**Table 3, Figure 2**).

Multivariable analysis of 30-day readmission in HF patients was performed to identify significant predictors by adjusting the odds ratio (aOR). Significant predictors of all-cause readmissions (**Table 4, Figure 3**) were male sex (aOR, 1.05; 95% confidence interval [CI], 1.01–1.10; $p = 0.026$), lowest quartile of median household income (aOR, 1.21; 95% CI, 1.13–1.30; $p < 0.001$), index admissions with nonelective (aOR, 1.12; 95% CI, 1.01–1.24; $p = 0.031$), metropolitan nonteaching (aOR, 1.14; 95% CI, 1.05–1.23; $p = 0.002$) and teaching (aOR, 1.16; 95% CI, 1.08–1.25, $p < 0.001$) hospitalizations, AFF (aOR, 1.15; 95% CI, 1.10–1.21; $p < 0.001$), COPD (aOR, 1.16; 95% CI, 1.10–1.22; $p < 0.001$), CKD (aOR, 1.17; 95% CI, 1.10–1.24; $p < 0.001$), anemia (aOR, 1.25; 95% CI, 1.19–1.32; $p < 0.001$), CCI ≥ 3 (aOR, 1.29; 95% CI, 1.19–1.39; $p < 0.001$), discharged to other facilities (aOR, 1.27; 95% CI, 1.20–1.34; $p < 0.001$), and length of stay (aOR, 1.006; 95% CI, 1.003–1.008; $p < 0.001$). Both prior CAD and Medicaid status were significant independent predictors in HF-specific readmissions (**Table 5**). On the other hand, PVD and CCI 2 or greater were significant predictors in the non-HF readmission cohort (**Table 5**).

Heart Failure Readmission Analysis

Table 3. Causes of 30-day readmissions in heart failure patients (n=10,370)

System classification	Specific diagnosis	Percentage (%)
Cardiac		50.34
	Valvular	0.8
	Hypertension	0.18
	Coronary artery disease	2.74
	Heart failure	39.01
	Systolic	8.67
	Diastolic	3.21
	Combined	3.04
	HF due to hypertension disorder +/- CKD	22.78
	Unspecified	1.31
	Atrial fibrillation or flutter	1.05
	Congenital	0.11
	Others	6.45
Pulmonary		12.44
	Pneumonia & Influenza	3.05
	Pulmonary embolism	0.8
	Respiratory failure	4.18
	Emphysema & Bronchitis	0.14
	Asthma	0.07
	Bronchiectasis	0.02
	Others	4.15
Infections		9.35
Gastrointestinal		4.65
Renal		4.14
Endocrine		2.79
	Thyroid	0.02
	DM	0.89
	Metabolic	1.69
	Others	0.18
Central nervous system		2.16
	Ischemic	1.29
	Others	0.87
Vascular		1.97
Neoplasms		1.11
Hematological		1.05
Musculoskeletal		0.89
Psychiatric		0.86
Dermatology		0.17
Others		8.05

HF = heart failure; CKD = chronic kidney disease; DM = diabetes mellitus.

Table 4. Multivariate predictors of readmissions of heart failure patients

Variables	30-day readmission			p value
	aOR	95% CI		
		LL	UL	
Age	0.987	0.985	0.989	<0.001
Sex		Referent		
Female				
Male*	1.05	1.01	1.10	0.026
Median household income (percentile) [†]		Referent		
0-25*	1.21	1.13	1.30	<0.001
26-50	1.010	0.943	1.083	0.771
51-75	1.009	0.941	1.082	0.794
76-100		Referent		
Admission type		Referent		
Elective				
Non-elective*	1.12	1.01	1.24	0.031
Day of admission		Referent		
Weekday				
Weekend	1.03	0.98	1.09	0.275

(continued to the next page)

Table 4. (Continued) Multivariate predictors of readmissions of heart failure patients

Variables	30-day readmission			p value
	aOR	95% CI		
		LL	UL	
Bed size of hospital [‡]		Referent		
Small				
Medium	0.995	0.933	1.061	0.879
Large	0.995	0.940	1.054	0.875
Teaching status of hospital [§]		Referent		
Non-metropolitan hospital				
Metropolitan non-teaching*	1.14	1.05	1.23	0.002
Metropolitan teaching*	1.16	1.08	1.25	<0.001
Expected primary payer		Referent		
Medicare				
Medicaid	1.08	1.00	1.16	0.054
Private insurance	0.71	0.65	0.76	<0.001
Self-pay	0.68	0.59	0.78	<0.001
No charge	1.21	0.78	1.86	0.392
Other	0.88	0.75	1.03	0.114
Comorbidities				
Hypertension	1.00	0.95	1.06	0.899
Diabetes	1.04	0.98	1.10	0.165
Dyslipidemia	0.98	0.93	1.04	0.551
Atrial fibrillation or flutter*	1.15	1.10	1.21	<0.001
PVD	1.06	0.96	1.16	0.246
Prior CAD	1.04	0.99	1.09	0.164
Prior TIA/Stroke	0.99	0.92	1.07	0.851
Prior CABG	1.02	0.94	1.10	0.665
Prior PCI	1.13	0.90	1.43	0.294
FH of CAD	0.99	0.91	1.09	0.899
COPD*	1.16	1.10	1.22	<0.001
CKD*	1.17	1.10	1.24	<0.001
Obesity	0.84	0.79	0.89	<0.001
OSA	0.94	0.88	1.01	0.089
Anemia*	1.25	1.19	1.32	<0.001
Tobacco	1.00	0.96	1.05	0.865
Alcohol	0.95	0.86	1.04	0.286
CCI [¶]		Referent		
1				
2	1.04	0.96	1.12	0.333
≥3*	1.29	1.19	1.39	<0.001
Disposition		Referent		
Home				
Facility/Others*	1.27	1.20	1.34	<0.001
Length of stay*	1.006	1.003	1.008	<0.001

aOR = adjusted odds ratio; CI = confidence interval; LL = lower limit; UL = upper limit; PVD = peripheral vascular disease; CAD = coronary artery disease; TIA = transient ischemic attack; CABG = coronary artery bypass graft; PCI = percutaneous coronary intervention; FH = family history; COPD = chronic obstructive pulmonary disease; CKD = chronic kidney disease; OSA = obstructive sleep apnea; CCI = Charlson comorbidity index.

*Significant predictors of readmission.

[†]Represents a quartile classification of the estimated median household income of residents within the patient's zip code, https://www.hcup-us.ahrq.gov/db/vars/zipinc_qrtl/nrdnote.jsp.

[‡]The bed size cutoff points divided into small, medium, and large have been done so that approximately one-third of the hospitals in a given region, location, and teaching status combination would fall within each bed size category, https://www.hcup-us.ahrq.gov/db/vars/hosp_bedsize/nrdnote.jsp.

[§]A hospital is considered to be a teaching hospital if it has an American Medical Association-approved residency program, https://www.hcup-us.ahrq.gov/db/vars/hosp_ur_teach/nrdnote.jsp.

^{||}International Classification of Diseases, Tenth Revision codes were utilized to identify respective co-morbidities as per **Supplementary Table 1**.

[¶]CCI/Deyo comorbidity index was calculated as per Deyo classification.

Heart Failure Readmission Analysis

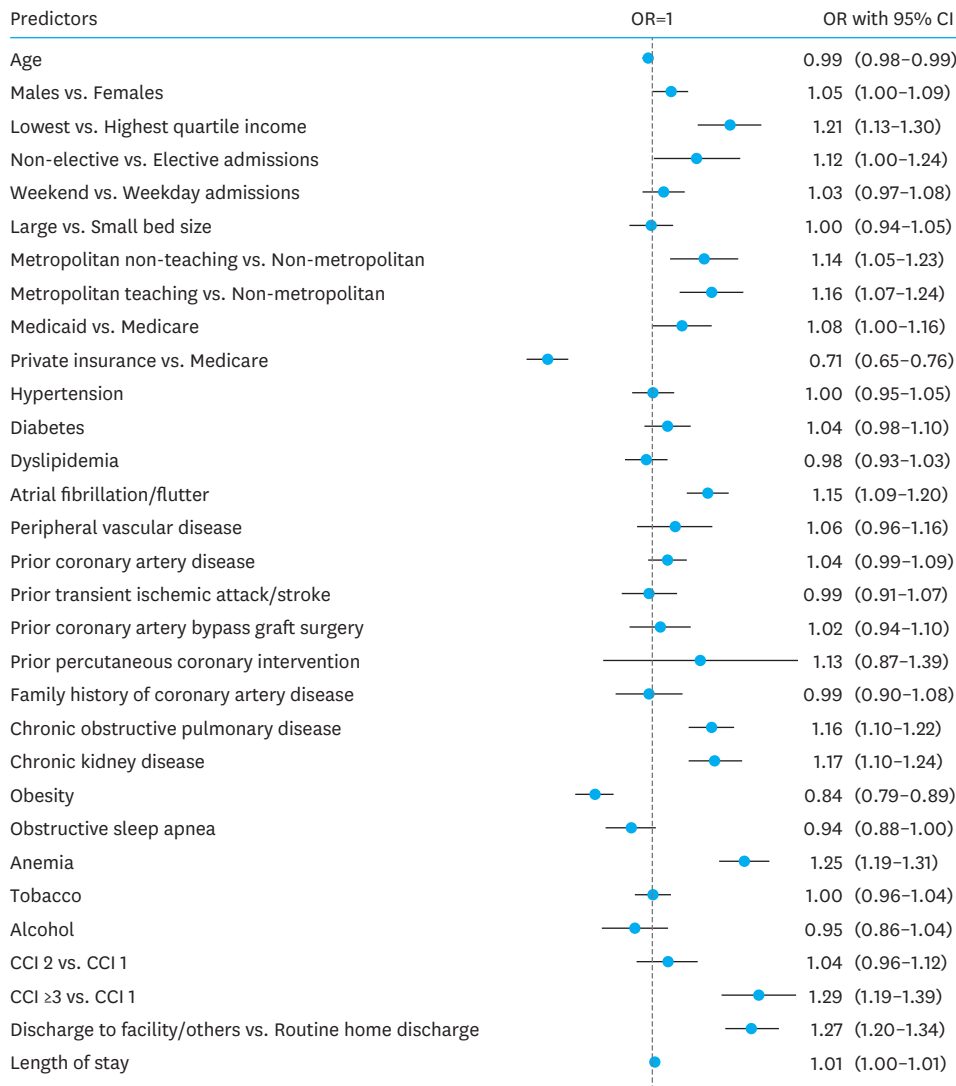


Figure 3. Predictors of all-cause 30-day readmissions in heart failure patients. OR = odds ratio (adjusted); CI = confidence interval; CCI = Charlson comorbidity index.

Table 5. Multivariate predictors of readmission with and without heart failure

Variables	Multivariate predictors of readmissions with heart failure only ^(H)				Multivariate predictors of readmissions except for heart failure ^(NH)			
	aOR	95% CI		p value	aOR	95% CI		p value
		LL	UL			LL	UL	
Age	0.981	0.978	0.984	<0.001	0.991	0.989	0.994	<0.001
Sex		Referent				Referent		
Female								
Male	1.19	1.11	1.28	<0.001	0.98	0.92	1.03	0.389
Median household income (percentile)*								
0-25	1.26	1.13	1.39	<0.001	1.19	1.09	1.29	<0.001
26-50	1.03	0.93	1.14	0.592	1.00	0.92	1.09	0.965
51-75	1.05	0.94	1.17	0.386	0.99	0.91	1.07	0.750
76-100		Referent				Referent		
Admission type		Referent				Referent		
Elective								
Non-elective	1.16	0.99	1.37	0.067	1.10	0.97	1.25	0.124

(continued to the next page)

Heart Failure Readmission Analysis

Table 5. (Continued) Multivariate predictors of readmission with and without heart failure

Variables	Multivariate predictors of readmissions with heart failure only ^(H)				Multivariate predictors of readmissions except for heart failure ^(NH)			
	aOR	95% CI		p value	aOR	95% CI		p value
		LL	UL			LL	UL	
Day of admission								
Weekday		Referent				Referent		
Weekend	1.09	1.01	1.17	0.034	0.99	0.93	1.06	0.871
Bed size of hospital [†]								
Small		Referent				Referent		
Medium	0.99	0.90	1.09	0.811	1.00	0.93	1.09	0.915
Large	0.98	0.90	1.06	0.581	1.01	0.94	1.08	0.741
Teaching status of hospital [‡]								
Non-metropolitan hospital		Referent				Referent		
Metropolitan non-teaching	1.18	1.04	1.33	0.010	1.12	1.02	1.24	0.021
Metropolitan teaching	1.19	1.07	1.33	0.001	1.15	1.05	1.25	0.001
Expected primary payer								
Medicare		Referent				Referent		
Medicaid	1.31	1.18	1.46	<0.001	0.92	0.83	1.01	0.075
Private insurance	0.62	0.55	0.70	<0.001	0.77	0.70	0.84	<0.001
Self-pay	0.76	0.62	0.92	0.006	0.62	0.52	0.74	<0.001
No charge	1.15	0.62	2.13	0.666	1.24	0.73	2.12	0.425
Other	0.95	0.76	1.20	0.688	0.84	0.68	1.02	0.079
Comorbidities [§]								
Hypertension	0.98	0.90	1.07	0.679	1.02	0.95	1.09	0.587
Diabetes	1.07	0.99	1.16	0.105	1.03	0.96	1.09	0.463
Dyslipidemia	1.04	0.96	1.13	0.289	0.95	0.89	1.01	0.114
Atrial fibrillation or flutter	1.20	1.11	1.29	<0.001	1.13	1.06	1.19	<0.001
PVD	0.87	0.75	1.00	0.054	1.17	1.06	1.30	0.003
Prior CAD	1.09	1.01	1.17	0.037	1.01	0.95	1.08	0.698
Prior TIA/Stroke	0.96	0.86	1.09	0.551	1.01	0.92	1.11	0.882
Prior CABG	1.09	0.97	1.23	0.149	0.97	0.88	1.07	0.536
Prior PCI	1.34	0.98	1.84	0.071	0.99	0.73	1.34	0.937
FH of CAD	0.97	0.85	1.11	0.693	1.01	0.90	1.13	0.889
COPD	1.16	1.07	1.25	<0.001	1.16	1.09	1.24	<0.001
CKD	1.48	1.35	1.61	<0.001	1.01	0.94	1.08	0.820
Obesity	0.87	0.79	0.95	0.002	0.83	0.77	0.89	<0.001
OSA	0.90	0.81	1.00	0.055	0.97	0.89	1.06	0.465
Anemia	1.15	1.07	1.24	<0.001	1.32	1.24	1.40	<0.001
Tobacco	1.02	0.95	1.09	0.677	1.00	0.94	1.06	0.995
Alcohol	1.01	0.88	1.15	0.919	0.91	0.81	1.03	0.134
CCI								
1		Referent				Referent		
2	0.90	0.81	1.01	0.076	1.13	1.03	1.24	0.007
≥3	1.13	1.01	1.26	0.041	1.40	1.27	1.53	<0.001
Disposition								
Home		Referent				Referent		
Facility/Others	1.18	1.09	1.28	<0.001	1.32	1.24	1.41	<0.001
Length of stay	0.99	0.99	1.00	0.049	1.01	1.01	1.01	<0.001

aOR = adjusted odds ratio; CI = confidence interval; LL = lower limit; UL = upper limit; PVD = peripheral vascular disease; CAD = coronary artery disease; TIA = transient ischemic attack; CABG = coronary artery bypass graft; PCI = percutaneous coronary intervention; FH = family history; COPD = chronic obstructive pulmonary disease; CKD = chronic kidney disease; OSA = obstructive sleep apnea; CCI = Charlson comorbidity index.

^(H)Patients readmitted because of heart failure, and non-heart failure-related readmissions were excluded.

^(NH)Patients readmitted because of non-heart failure, and heart failure-related readmissions were excluded.

*Represents a quartile classification of the estimated median household income of residents within the patient's zip code, https://www.hcup-us.ahrq.gov/db/vars/zipinc_qrtl/nrdnote.jsp.

[†]The bed size cutoff points divided into small, medium, and large have been done so that approximately one-third of the hospitals in a given region, location, and teaching status combination would fall within each bed size category, https://www.hcup-us.ahrq.gov/db/vars/hosp_bedsizes/nrdnote.jsp.

[‡]A hospital is considered to be a teaching hospital if it has an American Medical Association-approved residency program, https://www.hcup-us.ahrq.gov/db/vars/hosp_ur_teach/nrdnote.jsp.

[§]International Classification of Diseases, Tenth Revision codes were utilized to identify respective co-morbidities as per **Supplementary Table 1**.

^{||}CCI/Deyo comorbidity index was calculated as per Deyo classification.

DISCUSSION

We examined the 2019 NRD dataset to determine readmission characteristics in HF patients. The readmission rate was 21.2% in HF patients. Half of the readmissions were due to cardiac causes with HF being the most common cause for readmission in 39%. The etiology of non-cardiac admissions included pulmonology, infection, gastro-intestinal and renal causes. Predictors of all-cause readmissions were male sex, lower socioeconomic status, nonelective admissions, metropolitan non-teaching, and teaching hospitalizations, AFF, COPD, CKD, anemia, CCI ≥ 3 , discharge status to other facilities, and length of stay.

HF-related emergency department (ED) visits totaled 1.1 million between 2006 to 2014, according to a large population-based US sample study, and 91.5% of these patients ultimately were admitted.¹⁵ HF-related ED visits and hospitalizations were most prevalent in the patients ≥ 65 years of age, with a mean of 71.6 and 72.1 years, respectively.¹⁵ The NRD-based analysis of 2013 demonstrated 73.4% of HF hospitalizations were ≥ 65 years of age.⁹ The mean age of our HF patient cohort was 68.6 years, but readmissions occurred more frequently in younger patients compared to non-readmissions (67.4 vs. 68.9 years). Our study cohort was male predominant (54.2%) and male sex was an independent predictor of readmission in HF patients, similar to previous studies.¹⁶ However, in a meta-analysis published by Saito et al.¹⁷ male gender was not a predictor of readmission in HF patients. Our study cohort primarily consisted of patients from lower-income quartiles involving HF-specific, and non-HF-related readmissions, consistent with prior studies using the 2010–2017 NRD datasets.¹¹ Most of the admissions in our analysis were non-elective (95.2%) consistent with previous studies.^{11,15} Majority of the index admissions in our study were during weekdays (77.1%). Interestingly, a study by Shah et al.¹⁸ found a great number of admissions and discharges on weekdays, and Friday was independently associated with the highest 30-day HF-readmission rates. HF admissions were more prevalent in large bed-size hospitals (50.8%) and metropolitan teaching hospitals (65.2%), similar to previous studies.^{9,10} In our analysis, 52.1% of readmissions occurred in patients with large-hospital index admissions. Joynt and Jha¹⁹ reported discharges from small hospitals (28.4%) had higher readmissions compared to large-size hospital discharges (25.2%, $p < 0.001$). Kaneko et al.²⁰ concluded that the medium-volume and high-volume groups had lower in-hospital mortality for HF patients vs. low-volume group. Contrary to this finding, the work from Kumbhani et al.²¹ suggested that hospital volume correlated significantly with well-defined HF management protocols but did not impact 30-day mortality or readmission rates. These conflicting data are likely due to the use of databases comprised of heterogeneous patient profiles. Though readmitted pa-

tients were mostly Medicare enrollees in our analysis, a significant number of Medicaid enrollees were also included (17.9%), which is higher than reported by Khan et al.¹¹ and Jackson et al.¹⁵

HTN, DM, smoking, obesity, and hyperlipidemia are well-established risk factors for HF. Nyjo et al.²² reported that almost 95% of patients with HF have CCI ≥ 3 . Our study revealed a higher prevalence of AFF, PVD, CAD, prior CABG, COPD, CKD, and anemia in patients readmitted with HF than non-readmitted patients (**Table 1**). We found higher readmissions with CCI ≥ 3 , consistent with the prior studies.^{9,10} Furthermore, in an analysis by Testa et al.²³ CCI was not associated with long-term mortality in HF patients, questioning the role of CCI in predicting mortality. We found most of the patients in the readmitted cohort had single readmission only in 30-day follow-up. Only small number had either 4 or more than 4 readmissions in this 30-day follow-up. Historically, Arora et al.⁹ had shown similar distribution of the readmission frequencies.

The etiology of readmissions in HF patients was due to cardiovascular causes in nearly half of the 30-day readmissions in our study, with acute HF (39%) being the most common. Similarly, Arora et al.⁹ reported 34.5% readmissions owing to HF in the US in 2013. Khan et al.¹¹ reported an increasing trend of adjusted HF-specific, all-cause 30- and 90-day readmissions from 2010 to 2017. Other cardiovascular causes of readmissions in our study were CAD, AFF, valvular heart disease, and HTN. Pulmonary diseases (12.4%) were the second most common cause for readmission (including pneumonia and influenza), comparable to previous studies.^{10,15} Infections are associated with higher rates of HF exacerbation and higher mortality²⁴ which we also found in our study. One potential explanation for this may be related to acute systemic inflammation impairing cardiac function secondary to demand ischemia as well as sepsis-induced myocardial dysfunction.²⁵

We found that common predictors for all-cause readmissions and HF-specific readmissions were male sex, AFF, CKD, anemia, CCI ≥ 3 , and discharge to facilities in index admission. AFF was more prevalent in HF patients with readmissions and was an independent predictor of all-cause readmission. However, studies by Saito et al.¹⁷ and Fleming et al.²⁶ found no role of atrial fibrillation in HF readmissions. Our study showed higher odds of HF-related readmissions in patients with COPD, a finding previously reported by Ruigómez et al.²⁷ This finding is likely related to HF and COPD sharing similar risk factors such as smoking, advanced age, and systemic inflammation.²⁸ Multiple studies have reported CKD as a significant predictor of HF readmissions.^{17,20,26-28} It may be explained by a higher prevalence of traditional cardiovascular and uremia-related risk factors in such patients.²⁹ Anand and Gupta³⁰ reported anemia was associated with poor outcomes in HF pa-

tients. Importantly, we found higher odds of HF readmissions in anemic patients in our study potentially due to the neurohormonal and proinflammatory cytokine activation and renal dysfunction resulting in anemia of chronic disease in HF patients.³¹⁾

Lower-income quartile HF patients had higher odds of readmissions in our analysis which was previously reported by Khan et al.¹¹⁾ Medicare patients represent the majority of the population admitted with HF.³¹⁾ Conversely, we observed Medicaid patients having significantly higher odds of readmissions due to HF. We believe that this may be due to poor healthcare accessibility and social determinants of health in these patients. We found that HF-specific, non-HF and all-cause readmissions were significantly associated with prolonged LOS, and a greater number of discharges to nursing homes or rehab facilities after the index admissions in our study, similar to the previous reports.^{9,10)}

We cannot exclude that errors in coding may have occurred, such as under-reporting of primary and secondary diagnoses, which may have impacted the overall accuracy of our HF dataset. Additionally, we limited our analysis on patients readmitted within 30 days of their index admission. The patient profile and predictors of readmission may be different in patients readmitted beyond the 30-day time frame which also warrants further investigation. Furthermore, our dataset lacks key diagnostic testing information such as laboratory data, including cardiac biomarkers, cardiac imaging, and functional assessments such as the New York Heart Association class that would aid in prognostication of these patients.

In conclusions, we found that HF remains the most common cause of readmissions for HF patients. Readmission rates, causes of readmissions, and predictors of readmissions were similar to the previously published reports on HF readmissions utilizing large inpatient datasets. In addition to high comorbidity index, and low socioeconomic status, hospital resource utilization is a significant predictor of readmissions in HF patients for all-cause and HF-specific readmissions. Our research demonstrated that patients with HF are equally likely to be readmitted due to cardiac and non-cardiac causes. This supports the critical need to optimally manage traditional cardiovascular risk factors as well as common comorbid conditions to mitigate the risk of readmission and mortality.

SUPPLEMENTARY MATERIALS

Supplementary Table 1

ICD-10 codes for baseline characteristics and comorbidities

[Click here to view](#)

Supplementary Table 2

ICD-10 codes for admission diagnosis from NRD (2019)

[Click here to view](#)

ORCID iDs

Akhil Jain  <https://orcid.org/0000-0001-7298-4246>
 Shilpkumar Arora  <https://orcid.org/0000-0002-7246-7262>
 Viral Patel  <https://orcid.org/0000-0002-6245-0299>
 Maharshi Raval  <https://orcid.org/0000-0002-3016-0078>
 Karnav Modi  <https://orcid.org/0000-0003-3351-8829>
 Nirav Arora  <https://orcid.org/0009-0004-6070-5210>
 Rupak Desai  <https://orcid.org/0000-0002-5315-6426>
 Raphael Bonita  <https://orcid.org/0000-0001-5784-4798>

Conflict of Interest

The authors have no financial conflicts of interest.

Author Contributions

Conceptualization: Jain A, Arora S, Patel V, Raval M, Modi K, Arora N, Desai R, Bozorgnia B, Bonita R; Data curation: Jain A, Arora S; Formal analysis: Jain A, Arora S; Investigation: Jain A, Arora S; Methodology: Jain A, Arora S; Project administration: Jain A, Arora S, Bozorgnia B, Bonita R; Software: Jain A, Arora S; Supervision: Jain A, Arora S, Bozorgnia B, Bonita R; Validation: Jain A, Arora S, Bozorgnia B, Bonita R; Visualization: Jain A, Arora S; Writing - original draft: Jain A, Arora S, Patel V, Raval M, Modi K, Arora N, Desai R, Bozorgnia B, Bonita R; Writing - review & editing: Jain A, Arora S, Patel V, Raval M, Modi K, Arora N, Desai R, Bozorgnia B, Bonita R.

REFERENCES

1. Virani SS, Alonso A, Aparicio HJ, et al. Heart disease and stroke statistics-2021 update: a report from the American Heart Association. *Circulation* 2021;143:e254-743.
[PUBMED](#) | [CROSSREF](#)
2. McMurray JJ, Packer M, Desai AS, et al. Angiotensin-neprilysin inhibition versus enalapril in heart failure. *N Engl J Med* 2014;371:993-1004.
[PUBMED](#) | [CROSSREF](#)
3. McMurray JJ, Solomon SD, Inzucchi SE, et al. Dapagliflozin in patients with heart failure and reduced ejection fraction. *N Engl J Med* 2019;381:1995-2008.
[PUBMED](#) | [CROSSREF](#)
4. McMurray JJ, Packer M. How should we sequence the treatments for heart failure and a reduced ejection fraction?: a redefinition of evidence-based medicine. *Circulation* 2021;143:875-7.
[PUBMED](#) | [CROSSREF](#)

5. Dixit NM, Shah S, Ziaieian B, Fonarow GC, Hsu JJ. Optimizing guideline-directed medical therapies for heart failure with reduced ejection fraction during hospitalization. *US Cardiol* 2021;15:e07.
[CROSSREF](#)
6. Starling RC, Naka Y, Boyle AJ, et al. Results of the post-U.S. Food and Drug Administration-approval study with a continuous flow left ventricular assist device as a bridge to heart transplantation: a prospective study using the INTERMACS (Interagency Registry for Mechanically Assisted Circulatory Support). *J Am Coll Cardiol* 2011;57:1890-8.
[PUBMED](#) | [CROSSREF](#)
7. Jorde UP, Kushwaha SS, Tatoes AJ, et al. Results of the destination therapy post-food and drug administration approval study with a continuous flow left ventricular assist device: a prospective study using the INTERMACS registry (Interagency Registry for Mechanically Assisted Circulatory Support). *J Am Coll Cardiol* 2014;63:1751-7.
[PUBMED](#) | [CROSSREF](#)
8. Moertl D, Altenberger J, Bauer N, et al. Disease management programs in chronic heart failure: position statement of the Heart Failure Working Group and the Working Group of the Cardiological Assistance and Care Personnel of the Austrian Society of Cardiology. *Wien Klin Wochenschr* 2017;129:869-78.
[PUBMED](#) | [CROSSREF](#)
9. Arora S, Patel P, Lahewala S, et al. Etiologies, trends, and predictors of 30-day readmission in patients with heart failure. *Am J Cardiol* 2017;119:760-9.
[PUBMED](#) | [CROSSREF](#)
10. Arora S, Lahewala S, Hassan Virk HU, et al. Etiologies, trends, and predictors of 30-day readmissions in patients with diastolic heart failure. *Am J Cardiol* 2017;120:616-24.
[PUBMED](#) | [CROSSREF](#)
11. Khan MS, Sreenivasan J, Lateef N, et al. Trends in 30- and 90-day readmission rates for heart failure. *Circ Heart Fail* 2021;14:e008335.
[PUBMED](#) | [CROSSREF](#)
12. Agency for Healthcare Research and Quality. Overview of the Nationwide Readmissions Database (NRD) [Internet]. Rockville: Agency for Healthcare Research and Quality; 2019 [cited 2023 March 9]. Available from: <https://www.hcup-us.ahrq.gov/nrdoverview.jsp>.
13. Deyo RA, Cherkin DC, Ciol MA. Adapting a clinical comorbidity index for use with ICD-9-CM administrative databases. *J Clin Epidemiol* 1992;45:613-9.
[PUBMED](#) | [CROSSREF](#)
14. Glasheen WP, Cordier T, Gumpina R, Haugh G, Davis J, Renda A. Charlson comorbidity index: *ICD-9* update and *ICD-10* translation. *Am Health Drug Benefits* 2019;12:188-97.
[PUBMED](#)
15. Jackson SL, Tong X, King RJ, Loustalot F, Hong Y, Ritchey MD. National burden of heart failure events in the United States, 2006 to 2014. *Circ Heart Fail* 2018;11:e004873.
[PUBMED](#) | [CROSSREF](#)
16. Robertson J, McElduff P, Pearson SA, Henry DA, Inder KJ, Attia JR. The health services burden of heart failure: an analysis using linked population health data-sets. *BMC Health Serv Res* 2012;12:103.
[PUBMED](#) | [CROSSREF](#)
17. Saito M, Negishi K, Marwick TH. Meta-analysis of risks for short-term readmission in patients with heart failure. *Am J Cardiol* 2016;117:626-32.
[PUBMED](#) | [CROSSREF](#)
18. Shah M, Patnaik S, Patel B, et al. The day of the week and acute heart failure admissions: Relationship with acute myocardial infarction, 30-day readmission rate and in-hospital mortality. *Int J Cardiol* 2017;249:292-300.
[PUBMED](#) | [CROSSREF](#)
19. Joynt KE, Jha AK. Who has higher readmission rates for heart failure, and why? Implications for efforts to improve care using financial incentives. *Circ Cardiovasc Qual Outcomes* 2011;4:53-9.
[PUBMED](#) | [CROSSREF](#)
20. Kaneko H, Itoh H, Yotsumoto H, et al. Impact of hospital volume on clinical outcomes of hospitalized heart failure patients: analysis of a nationwide database including 447,818 patients with heart failure. *BMC Cardiovasc Disord* 2021;21:49.
[PUBMED](#) | [CROSSREF](#)
21. Kumbhani DJ, Fonarow GC, Heidenreich PA, et al. Association between hospital volume, processes of care, and outcomes in patients admitted with heart failure: insights from get with the guidelines-heart failure. *Circulation* 2018;137:1661-70.
[PUBMED](#) | [CROSSREF](#)
22. Nyjo S, Leigh J, Jackson C, Dubey G, Sankaranarayanan R, Douglas H. P1470: Heart failure patients with high Charlson co-morbidity scores can be managed safely in a day-case ambulatory heart failure unit without the need for hospital admission. *Eur Heart J* 2017;38:ehx502.P1470.
[CROSSREF](#)
23. Testa G, Cacciatore F, Galizia G, et al. Charlson comorbidity index does not predict long-term mortality in elderly subjects with chronic heart failure. *Age Ageing* 2009;38:734-40.
[PUBMED](#) | [CROSSREF](#)
24. Alon D, Stein GY, Korenfeld R, Fuchs S. Predictors and outcomes of infection-related hospital admissions of heart failure patients. *PLoS One* 2013;8:e72476.
[PUBMED](#) | [CROSSREF](#)
25. Colombo PC, Ganda A, Lin J, et al. Inflammatory activation: cardiac, renal, and cardio-renal interactions in patients with the cardiorenal syndrome. *Heart Fail Rev* 2012;17:177-90.
[PUBMED](#) | [CROSSREF](#)
26. Fleming LM, Gavin M, Piatkowski G, Chang JD, Mukamal KJ. Derivation and validation of a 30-day heart failure readmission model. *Am J Cardiol* 2014;114:1379-82.
[PUBMED](#) | [CROSSREF](#)
27. Ruigómez A, Michel A, Martín-Pérez M, García Rodríguez LA. Heart failure hospitalization: An important prognostic factor for heart failure re-admission and mortality. *Int J Cardiol* 2016;220:855-61.
[PUBMED](#) | [CROSSREF](#)
28. de Miguel Díez J, Chancafe Morgan J, Jiménez García R. The association between COPD and heart failure risk: a review. *Int J Chron Obstruct Pulmon Dis* 2013;8:305-12.
[PUBMED](#) | [CROSSREF](#)
29. Lisowska A, Musiał WJ. Heart failure in patients with chronic kidney disease. *Rocz Akad Med Białymst* 2004;49:162-5.
[PUBMED](#)
30. Anand IS, Gupta P. Anemia and iron deficiency in heart failure: current concepts and emerging therapies. *Circulation* 2018;138:80-98.
[PUBMED](#) | [CROSSREF](#)
31. Khera R, Kondamudi N, Zhong L, et al. Temporal trends in heart failure incidence among Medicare beneficiaries across risk factor strata, 2011 to 2016. *JAMA Netw Open* 2020;3:e2022190.
[PUBMED](#) | [CROSSREF](#)