

# Live plant imports: the major pathway for forest insect and pathogen invasions of the US

Andrew M Liebhold<sup>1\*</sup>, Eckehard G Brockerhoff<sup>2</sup>, Lynn J Garrett<sup>3</sup>, Jennifer L Parke<sup>4</sup>, and Kerry O Britton<sup>5</sup>

Trade in live plants has been recognized worldwide as an important invasion pathway for non-native plant pests. Such pests can have severe economic and ecological consequences. Nearly 70% of damaging forest insects and pathogens established in the US between 1860 and 2006 most likely entered on imported live plants. The current regulation of plant imports is outdated and needs to balance the impacts of pest damage, the expense of mitigation efforts, and the benefits of live plant importation. To inform these discussions, we document large increases in the volume and value of plant imports over the past five decades and explain recent and proposed changes to plant import regulations. Two data sources were used to estimate the infestation rate of regulated pests in live plant shipments entering the US, thus allowing evaluation of the efficacy of the current port inspection process.

*Front Ecol Environ* 2012; 10(3): 135–143, doi:10.1890/110198 (published online 5 Mar 2012)

Invasions of non-native forest insects and pathogens continue despite ongoing countermeasures by federal and state agencies; on average, 2.5 previously unrecognized non-native insect species establish per year in the US (Aukema *et al.* 2010). Damages from these forest invaders cost US taxpayers several billions of dollars annually (Pimentel *et al.* 2005; Aukema *et al.* 2011). These costs are borne in part by federal, state, and local governments, which work to eradicate newly established pest populations, to slow the spread of established pests, and to remove hazardous dead trees on public lands. But major costs are also assumed by landowners who may lose valuable forest resources, as well as by homeowners who often must pay large sums for tree removal/replacement and suffer losses in property value resulting from associated tree mortality (Aukema *et al.* 2011). Less is known about the effects of invasive species on ecosystem services, although some pest

invasions (eg chestnut blight in North America) have virtually extirpated their host tree species; thus, cascading environmental impacts may be substantial.

The importance of the plant trade as an invasion pathway for arthropod pests in Europe was recognized in several previous studies. By analyzing the non-native insect fauna in Switzerland and Austria and assessing the most likely introduction pathway for each species, Kenis *et al.* (2007) estimated that at least 43% of these introductions were the result of the plant trade, mainly that of ornamentals (including cut flowers). Expanding this analysis to all established non-native arthropods in Europe, Roques *et al.* (2009) attributed 38% of introductions to the horticultural and ornamental trade (including cut flowers and seed). Likewise, Smith *et al.* (2007) attributed nearly 90% of “human-assisted” invertebrate pest introductions in the UK between 1970 and 2004 to the plant trade. Live plants are also an important pathway for invasive plant pathogens, which are particularly difficult to detect in port inspections (Palm and Rossman 2003; Rossman 2009).

Here, we provide the first report quantifying the role of the live plant pathway for invasions of forest insect pests and diseases that have become established in the US. We also use historical trade data to characterize temporal trends in live plant imports, as well as historical pest interception data to illustrate the efficacy of plant import inspection stations. In this analysis, we include all live plants intended for retail and propagative use. In addition to including plants with roots, this commodity category – also referred to as “plants for planting” or “nursery stock” – encompasses bulbs, roots, and unrooted cuttings, but excludes cut flowers, ornamental foliage, and seed.

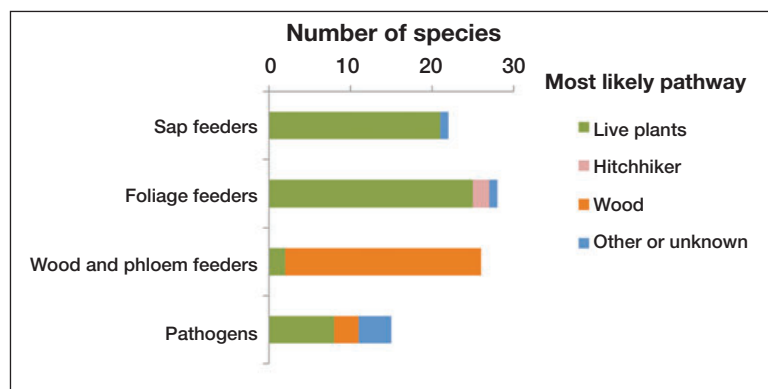
## In a nutshell:

- The importation of live plants is historically the most common pathway for the introduction of non-native forest insect pests and pathogens
- Plant imports in the US increased 33% per decade over the past 43 years; the customs value of current imports represents only 3.1% of the horticulture industry
- There are practical limitations to finding pests through inspections; we estimate that in fiscal year 2009, about 72% of infested plant shipments passed through US ports undetected

## ■ Forest pest invasion pathways

Of 455 species of non-indigenous forest insects and diseases documented in the US (Aukema *et al.* 2010), 82

<sup>1</sup>US Department of Agriculture Forest Service, Northern Research Station, Morgantown, WV \* (aliebhold@fs.fed.us); <sup>2</sup>Scion/New Zealand Forest Research Institute, Christchurch, New Zealand; <sup>3</sup>US Department of Agriculture–Animal and Plant Health Inspection Service, Raleigh, NC; <sup>4</sup>Department of Botany and Plant Pathology, Oregon State University, Corvallis, OR; <sup>5</sup>US Department of Agriculture Forest Service, Forest Management Science, Arlington, VA



**Figure 1.** Most likely pathways for forest pathogens and different insect guilds. Pathway assignment for individual species was based on published information and biology, as detailed in WebTables 1–4.

(representing 65 insects and 17 pathogens) were designated as having “high impact” (based on at least one published report of associated damage to forest tree species). For each of these 82 species, we identified the most likely pathway by which their invasion occurred, in most cases by relying on previous publications either reporting their invasion history or identifying that pathway given the species’ biology. In instances where publications indicating a likely pathway were lacking, we designated the most likely pathway based upon species’ biological characteristics and/or historical interceptions at ports-of-entry. Other possible pathways were also specified (WebTables 1–4).

The most common invasion pathway into the US for damaging forest insects and pathogens is via live plants

(Figure 1), with approximately 69% of established, damaging non-native forest pests attributed to the live plant trade (Panel 1, a–d). This value is intermediate compared with previous estimates for Europe (Kenis *et al.* 2007; Smith *et al.* 2007; Roques *et al.* 2009). Although similar to methods used previously, our pathway analysis was limited to forest pests, and only to those that cause substantial impacts. Smith *et al.* (2007) attributed a much higher percentage of pests in the UK to the plant trade. Though it is tempting to suggest that this outcome is due to the historical predilection of the British people for collecting exotic plants, note that the analysis by Smith *et al.* (2007) examined all pest establishments in the UK in the recent past. In

contrast, our analysis reported here did not limit the time of introduction. While the rate of accumulation of forest pests in general has been relatively constant since 1860 (Aukema *et al.* 2010), changes in trade and phytosanitary practices have likely altered the relative importance of particular pathways. For example, Aukema *et al.* (2010) found that establishment of wood-borers increased faster than any other insect guild since the 1980s, and attributed this to the increased volume of containerized freight and accompanying wood packaging material.

The most common pathway also varied considerably among insect guilds (Figure 1). A total of 95% of sap-feeding insects and 89% of foliage-feeding insects most likely entered the US on live plants (WebTables 1 and 2),

#### Panel 1a. Examples of forest pests introduced via live plants

##### White pine blister rust (*Cronartium ribicola*)

The earliest report of white pine blister rust (WPBR) in North America described the discovery on *Ribes* leaves at Geneva, New York, in 1906. In 1909, Spaulding (1911) found uniformly infested white pine (*Pinus* spp) seedlings in shipments sent from a German nursery to 226 localities in the US Midwest. In 1910, the pathogen was detected on infected eastern white pine (*Pinus strobus*) seedlings shipped from three nurseries in France, at least some of which were planted near Vancouver, British Columbia. This provided the pathogen entry to western North America, where this canker pathogen caused up to 90% mortality in once vigorous and majestic western white pine (*Pinus monticola*) forests (Mielke 1943).

Damage caused by WPBR provided some of the motivation for passage of the Plant Quarantine Act of 1912, and prohibition of imports of five-needle pines (*Pinus* subgenus *Strobus*) was the subject of Plant Quarantine Number 1 (Weber 1930). Over the next 50 years, more than \$150 million was spent on control measures, such as aerial spraying of actidione and removal of the alternate WPBR host *Ribes* plants on >8 million hectares (Benedict 1981). Although these direct control efforts are no longer conducted, more than \$2 million per year is spent searching for resistant trees and developing management strategies to control WPBR.

All nine North American species in the white pine group are susceptible to the rust; in addition to impacts on high-value timber species, the pathogen is spreading to keystone high-elevation species like whitebark pine (*Pinus albicaulis*), bristlecone pines (*Pinus* subsection *Balfourianae*), and limber pine (*Pinus flexilis*), which are critical resources for birds, such as Clark’s nutcracker (*Nucifraga columbiana*), and the grizzly bear (*Ursus arctos*). Ironically, European plant pathologists, with a knowledge of WPBR, had warned of impending disaster associated with importation of diseased pine nursery stock (Merrill 1988), but there were no quarantine laws in North America, and therefore no legal way to prevent shipments.



H.J. Larsen, Bugwood.org

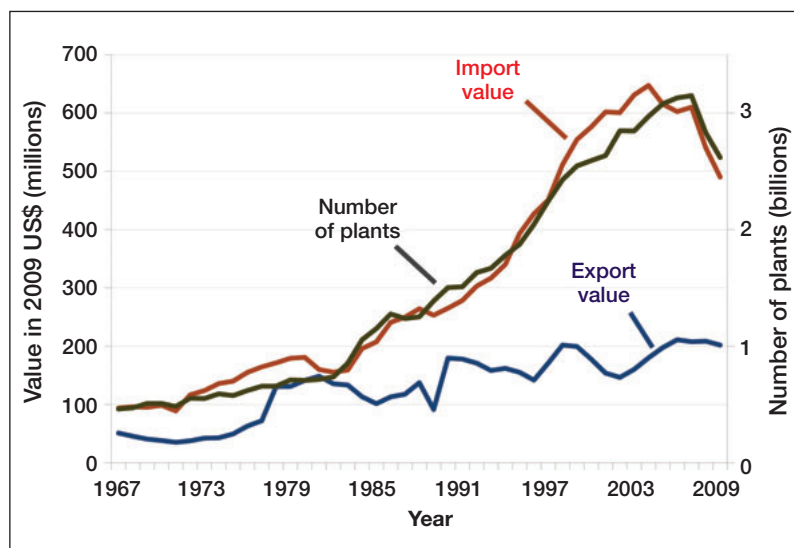
but most wood- and phloem-boring insects (borers) likely entered the country on wood packaging materials, as well as logs, lumber, or other wood sources (87.5%). Only 12.5% of borers (the most costly insect guild; Aukema *et al.* 2011) are believed to have entered via live plants (WebTable 3). For forest pathogens, 47% are attributed to the live plant pathway and 19% of invasions were associated with trade in wood (WebTable 4).

### ■ Characterizing the US international plant trade

The quantity of plant imports rose substantially during the past 43 years (US Department of Commerce 2011), increasing by more than 500% (an average increase of 51 million plants per year) to a maximum of 3.15 billion plants in 2007 (Figure 2). The

recent economic downturn may account for the decline in plant imports during calendar years 2008 and 2009.

Since 1967, the value of all imported plants increased from nearly \$94 million to a high of \$647 million in 2004 (Figure 2; unless otherwise indicated, all monetary values reported in the text are in US\$). Between 1989 and 2002, the value share of imported plants annually averaged only 3.1% of domestic consumption. The value of US nursery plant exports was substantially less, averaging \$206.5 million annually (2005–2007). *Dracaena* was the genus most frequently imported between 2005 and 2009, followed by *Verbena*, *Calibrachoa*, *Codiaeum*, *Petunia*, *Phalaenopsis*, *Impatiens*, *Osteospermum*, *Lantana*, and *Lobelia*; imported plants belonging to these genera tended to be tropical in origin, meant for indoor use, or destined for ornamental bedding. After imported plants cleared the inspection process at their respective ports-of-entry (see section



**Figure 2.** US imports and exports of live plants, 1967–2009. Values are adjusted to 2009 US\$. Data obtained from the US Department of Commerce (2011).

below), their destinations were California (27%), Florida (19%), Illinois (7%), Ohio (6%), New Jersey (6%), New York (6%), Michigan (4%), Colorado (3%), Pennsylvania (3%), and all other states combined (19%).

Woody ornamentals are more likely than herbaceous plants to harbor forest pests, and the probability of pest establishment may be elevated when the former are planted outdoors, in close proximity to other live hosts (Smith *et al.* 2007). During 1996–2009, an average of 105 million live trees and shrubs were imported to the US. The changing demographics of shipment origins for woody plants (WebTable 5) are revealed by contrasting the average volume of imported plants and market share between 1989 and 1993 with imports between 2005 and 2009. Canada is the listed source of 97% of woody plants, although Asia and Oceania are the fastest growing sources. Between 2005 and 2009, nearly 135 million plants on

#### Panel 1b. Examples of forest pests introduced via live plants

##### Sudden oak death (*Phytophthora ramorum*)

*Phytophthora ramorum* emerged in the US as a forest pathogen causing mortality in oak (*Quercus* spp) and tanoak (*Notholithocarpus densiflorus*) in California in the mid-1990s, and appeared about the same time in Europe as a nursery pathogen. The pathogen produces spores on a wide variety of foliar hosts, including many popular landscape species. Population genetics studies indicate separate origins for the North American and European populations, and that the North American forest infestation likely originated in nurseries (Ivors *et al.* 2006; Mascheretti *et al.* 2008). Although nursery stock has been the major pathway for long-distance spread, the pathogen spreads locally in rain, as well as via surface water runoff from infested nurseries. The pathogen has spread to forests in 14 counties in coastal California and one county in southwest Oregon. In Europe, the pathogen has spread to woodlands in Ireland, the UK, Norway, the Netherlands, and Germany, and has been found in nurseries in sixteen other European countries and Canada.

Cost projections in Oregon alone for the current containment program and projected 20-year forest industry losses are estimated at \$31 million, while the anticipated costs of impacts – if the current containment program is discontinued – have been estimated to be as much as \$292 million (Hall 2009).







**Figure 3.** Scenes from the live plant trade. (a) Japanese maples (*Acer palmatum*) newly imported to Germany. (b) Exit hole of citrus longhorned beetle (*Anoplophora chinensis*) in a young Japanese maple. (c and d) Inspectors at work in the Miami, Florida, Plant Inspection Station.

average were imported annually with soil or potting media attached to roots, which increases the risk of transferring soil-borne insects and pathogens, with 94% of such plant shipments originating in Canada (WebTable 6).

#### ■ Plant shipment inspections and the pests they find

The US Department of Agriculture's (USDA's) Animal and Plant Health Inspection Service (APHIS) inspects imports of plants, cuttings, and seeds, all of which must arrive at one of 17 Plant Inspection Stations located at ports-of-entry throughout the US. Activities at these stations include the physical inspection of plant material, identification of plants, seeds, and pests, and application of disinfection treatments. The Plant Inspection Stations also issue federal phytosanitary certificates (documents certifying the absence of regulated pests or confirming a treatment required by the importing country) for exports. In all, approximately 65 full-time personnel are employed to inspect incoming plant shipments (Figure 3), leading to an average workload in fiscal year (FY) 2010 of 43 million plants per inspector. Data on shipments inspected and pests detected are maintained by APHIS.

During FY 2003–2010, 22 267 shipments – representing 2.6% of the total number of incoming shipments – were found to be infested with at least one “reportable” pest

species in normal port-of-entry inspections. Indeed, many of these shipments were found to contain more than one pest species. By examining records stored in the APHIS Pest Interception Database (PestID) (McCullough *et al.* 2006), we were able to characterize the types of detected pest species.

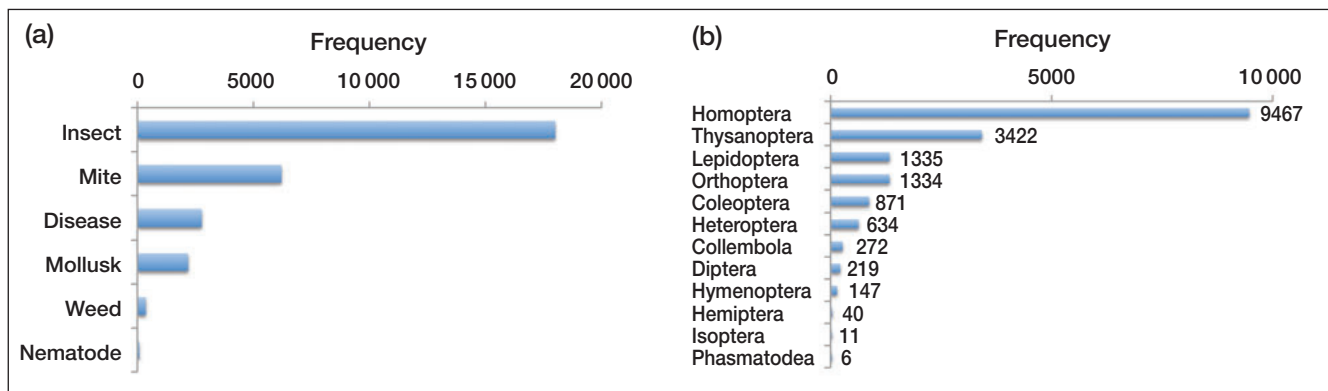
Most intercepted pests (18 008) were insects (Figure 4a), predominated by the Order Homoptera – sucking insects, which include most insect vectors of plant viruses (Figure 4b). Among the non-insect pests, mites were detected in 6210 shipments, diseases in 2773 shipments, mollusks in 2187 shipments, nematodes in 81 shipments, and noxious weeds in 360 shipments (Figure 4a).

#### ■ Inspection efficacy

In addition to conducting standard port inspections, APHIS implements the Agriculture Quarantine Inspection Monitoring (AQIM) program to monitor the effectiveness of these inspections and to provide a scientific basis for improving inspection procedures. Under AQIM, passenger

baggage, vehicles, mail, and cargo are randomly sampled at seven of the 17 Plant Inspection Stations and undergo more thorough inspection processes to produce statistically based estimates of approach rates (percent of inspected shipments that are found to be infested) for potential pests (Work *et al.* 2005). Since 2008, live plant shipments have been included in the AQIM program; specifically, randomly selected shipments of live plants belonging to 24 commonly imported genera were subject to the more thorough AQIM inspection process. To determine inspection efficacy of the Plant Inspection Stations' normal operating procedures, we compared FY 2009 records of pest interceptions from AQIM sampling of plant propagative materials in cargo with the interception rate over the same period for shipments of the same 24 plant genera from PestID. Because the AQIM inspection methods are more thorough, it is reasonable to assume that the AQIM results provide a more accurate estimate of the actual infestation rate.

Under standard port inspections, infestations were detected in 810 out of 24 781 total recorded shipments (equivalent to 3.3%) of the 24 plant genera. In contrast, in a random subsample of inspections under the more thorough AQIM process conducted by the same inspectors, 118 out of 996 shipments (equivalent to 11.9%) were found to contain reportable pests. Conservatively



**Figure 4.** Frequency (number of shipments infested) and taxonomic characterization of pests detected in shipments of live plants, fiscal years 2003–2010. (a) Types of pests detected. (b) Breakdown among insect Orders.

assuming that AQIM results reflect the actual infestation rate, then approximately 8.6% (ie the difference in infestations between AQIM inspections and standard inspections) of all incoming shipments were infested but escaped detection under standard inspection procedures. Expressed another way, only 28% of actual infestations were detected by standard inspections, whereas 72% escaped detection.

Even the most thorough port inspections are unlikely to detect all arriving pests, because some infestations will not display easily recognizable signs or symptoms of pests at the moment of passage. Therefore, if 11.9% of shipments were visibly infested, the actual infestation rate was probably higher. The total number of individuals of a species arriving per unit time – “arrival rate” (Brockerhoff *et al.* 2006) or “propagule pressure” (Lockwood *et al.* 2005; Von Holle and Simberloff 2005) – strongly influences the establishment success of non-native species, and thus it is

important to reduce the arrival rate to mitigate future invasions.

#### ■ Regulation of live plant imports: outdated assumptions

Regulation of live plant imports by the USDA is codified in Title 7 of the Code of Federal Regulations, Part 319, Section 37 (“Nursery Stock, Plants, Roots, Bulbs, Seeds, and other Plant Products”). This regulation, also known as “Quarantine 37”, was promulgated in 1918 “to reduce to the utmost the risk of introducing plant pests with plant importations” (Weber 1930). The regulatory design of the quarantine was based on existing conditions and particular assumptions. At the time, it was assumed that (1) typical shipments would be small (fewer than 100 individual plants) and infrequent; (2) imports would mainly be for the establishment of domestic propagation

#### Panel 1c. Examples of forest pests introduced via live plants

##### Citrus longhorned beetle (*Anoplophora chinensis*)

Citrus longhorned beetle (CLB) was first detected in the US at a nursery in Washington State in 2001 (USDA 2010). An eradication program was swiftly implemented to prevent the next generation of beetles from spreading; thousands of trees were removed, and a quarantine on the movement of wood was implemented over a one-half-mile radius around the introduction site. The program was effective in preventing further spread and the establishment of CLB, at a cost of \$2.2 million between 2001 and 2007 (Haack *et al.* 2010). Although interceptions of the closely related Asian longhorned beetle (ALB; *Anoplophora glabripennis*) were strongly associated with wood packaging materials, almost all CLB interceptions at US borders were found on live plants, suggesting that live plants represent the main pathway for CLB invasion (Haack *et al.* 2010).

In Europe, accidental introductions of CLB associated with plants (Figure 3, a and b) caused several incursions and at least one successful establishment in northern Italy (Haack *et al.* 2010). CLB is a major pest in its native range in Southeast Asia, and is considered a high-risk quarantine pest in the US. CLB may potentially be a greater threat to trees than ALB, which has already caused hundreds of millions of dollars in damages and eradication expenditures (Haack *et al.* 2010), because CLB has higher fecundity and can tolerate a greater range of climates (WISC 2009). The beetle feeds on and can kill healthy trees, primarily hardwoods like maples (*Acer* spp), oaks, and poplars (*Populus* spp), as well as fruit trees and ornamentals.



Plant Protection Service, Bugwood.org



stock and not for direct resale; (3) mandatory fumigation with methyl bromide would be applied to exterminate arthropod pests; (4) imports would enter only through ports with specialized staff and inspection facilities; and (5) taxa known to carry pests that are difficult to detect (eg pathogens) would be prohibited or have special requirements. These conditions prevailed until the 1970s (USDA-APHIS 2004).

Despite the recognized necessity for trade restrictions on certain plants to mitigate the introduction of harmful non-native pests, the counteracting need to import new plant species and varieties – to increase the germplasm available to US growers – was a powerful influence on subsequent changes to Quarantine 37. The horticulture industry favored a regulatory design that encouraged exploration of plant taxa for agriculture- and especially horticulture-based applications. At the time, however, there was limited understanding of the invasive potential of certain plants or of the risk magnitude posed by pests in the trade of propagative material. In addition, favorable growing conditions and inexpensive labor overseas led the industry to import large amounts of plants for domestic planting, or for immediate sale to consumers (USDA-APHIS 2004).

Today, US plant import regulations categorize imported plants as either prohibited (not allowed) or restricted (allowed under certain conditions). Specifying prohibited plants and allowing entry to the unspecified remaining genera is referred to as a “black list” approach. Most plant genera are permitted entry if accompanied by a phytosanitary certificate from the country of origin and inspected upon arrival at a Plant Inspection Station.

Some plant genera are required to be held in post-entry quarantine for specific time periods. There are no longer

mandatory fumigation requirements for all plants, and no limits on shipment size; some shipments now consist of hundreds of thousands of plants.

To address concerns about the influx of pests via live plants, APHIS recently established a new “gray list” category of live plants – those “Not Approved Pending a Pest Risk Analysis” (NAPPRA; USDA-APHIS 2011a). Instituted in 2011, NAPPRA includes two lists: (1) potential quarantine pest plants (ie weeds) and (2) potential hosts of quarantine pests. Initially, the gray list will focus on plants that have not been imported in large quantities in the past; for example, several forest tree genera have been proposed for inclusion in the NAPPRA category. This new category allows APHIS to respond more quickly to scientific evidence demonstrating that a plant taxon is itself a pest, or may carry a pest of concern, without first engaging in a lengthy pest risk analysis. APHIS accepts public input for plant taxa that should be listed in this category ([www.aphis.usda.gov/import\\_export/plants/plant\\_imports/Q37/nappra/suggestions.shtml](http://www.aphis.usda.gov/import_export/plants/plant_imports/Q37/nappra/suggestions.shtml)), and contributions from the scientific community could greatly enhance the protection of natural resources through this important tool.

Although there are no data to empirically evaluate the role of plant smuggling in the introduction of insect pests and diseases, there are several instances where pests have arrived despite regulations prohibiting host entry; plant smuggling may be the most likely explanation for these cases. For example, the chestnut gall wasp (*Dryocosmus kuriphilus*), a harmless insect in its native range in China, was found in 1940 in Japan and in 1974 in the US, where it was illegally imported on smuggled budwood (Rieske 2007). It has become the most severe insect pest of American chestnut (*Castanea dentata*) and

#### Panel 1d. Examples of forest pests introduced via live plants

##### Light brown apple moth (*Epiphyas postvittana*)

The Australian light brown apple moth (LBAM; *Epiphyas postvittana*) is a highly polyphagous pest, affecting many trees (horticultural and otherwise) and other plants (Suckling and Brockhoff 2010). LBAM was accidentally introduced to New Zealand, Hawaii, and the UK, and it has been intercepted numerous times at US and New Zealand borders and in several other countries on fruit and live plants (eg Venette *et al.* 2003; New Zealand Ministry of Agriculture and Forestry 2011). In 2006, two LBAM were found in Berkeley, California. Subsequent delimitation trapping and trace-backs of finds on nursery plants revealed the presence of the largest populations around Santa Cruz, California, where the California Department of Food and Agriculture detected heavy infestations in several wholesale nurseries. Some of these nurseries had imported nursery stock from Australia and New Zealand, suggesting that the initial introduction may have occurred there. Though importation of cut flowers and fresh produce represent alternative pathways by which the species could have possibly gained entrance, various evidence supports live plant importation as the most likely entry pathway.

An economic risk analysis suggested that damages to California’s four main fruit crops, as well as quarantine and other costs, could reach \$105 million annually (Fowler *et al.* 2007). Although the moth’s California distribution in 2007 spanned approximately 150-km north–south and 40-km inland, eradication efforts were undertaken because of the potential damage and impacts on trade (Suckling and Brockhoff 2010). In 2008, the USDA’s budget for the eradication was \$74.5 million. However, further spread of LBAM occurred, probably aided by long-distance movements of nursery plants and infested crops; the program goal was eventually changed from moth eradication to containment.



California Department of Food and Agriculture

is expected to complicate the introduction of blight-resistant hybrids.

### ■ New horizons in regulating the plant trade

In further efforts to address the live plant invasion pathway, the North American Plant Protection Organization adopted Regional Standard for Phytosanitary Measures number 24 in 2005 (NAPPO 2005), signaling the intention of the three member countries (Canada, the US, and Mexico) to develop and implement regulations that rely on an integrated measures approach to pest risk management in live plants. This approach has the advantage of reducing unknown as well as known pest problems through the use of best management practices at plant nurseries, although required measures must be based on specific pest risks. The process of developing and implementing regulations for integrated measures is complicated by the myriad of host plants and potential pests for which appropriate pest risk management measures must be determined and negotiated between trading partners.

Both APHIS and the Canadian Food Inspection Agency are testing a pilot nursery certification program that uses an integrated measures approach to address particular pests on specific plants from specific geographical locations. A participating facility must maintain records that verify the origin of all plant material and document the required monitoring and production practices. The facility must also ensure that only eligible plant material is exported under the program. After participating in the program for 1 year, the facility then becomes eligible to issue its own phytosanitary certificate, thus expediting shipping and passage through ports and reducing the chances of shipment rejection.

Similar “pre-clearance” programs exist for bulbs from the Netherlands. Pre-clearance programs expedite trade because entry requirements are met in the country of origin. Such programs may be more effective at pest detection than port inspections because the former often require growing-season inspections that facilitate detection (if pests are present), whereas plant material is often shipped and thus inspected in a dormant state (in which pests may be more difficult to detect). Industry benefits from faster access to markets, which results in fresher products, as well as reduced rejection rates and arrival delays. Rejections are also less costly when imposed prior to shipping.

The International Plant Protection Convention (IPPC) is working to standardize an integrated measures approach to reduce pest presence in the live plant trade (IPPC 2006). Our findings support the need for more robust methods to maintain and verify plant health. Clearly, given the volume of current trade in live plants and the difficulties of detecting pests in ports, we should seek methods that complement inspection and provide more comprehensive approaches to manage pest-related risks. Combined improvements will minimize the likelihood of introducing non-native pests via live plants.

### ■ Conclusions

Live plants represent the most common pathway by which non-native forest insects and pathogens have likely arrived in the US. Furthermore, international movement of plants is increasing worldwide, as demonstrated by the data presented here on live plant imports to, and exports from, the US. While live plants were previously introduced to the US mainly for plant breeding purposes and as propagation stock, there is a rapidly increasing trend in large volumes of plants being grown overseas for domestic planting or US retail sales. Given this trend, non-native forest insect and pathogen invasions may likely increase in the future under the current system; thus, it is important to address this anticipated and developing invasion pathway. Bradley *et al.* (2012) recently discussed trends of increasing plant imports relative to the risks of novel plant invasions, but here we identify perhaps an even more insidious problem of plant pests associated with plant imports.

One mitigation approach would be to intensify inspection efforts at Plant Inspection Stations. Although not all actionable pests found by inspectors at any level of inspection pose the same risk to US plant resources, there are nevertheless practical limitations to our ability to detect pests as they pass through ports. To avoid prohibitively expensive increases in personnel and facilities, APHIS recently announced the implementation of a risk-based inspection process that will target shipments of high-risk plants for more intense inspections, recognizing that it is impractical to completely inspect every item (USDA-APHIS 2011b). Molecular technology should be explored to improve detection – especially for plant pathogens, which are particularly difficult to detect visually.

Another alternative would be to adopt a “white list” system, such as that used in Australia. Australian regulations prohibit plants from entry until a pest risk assessment demonstrates that they pose very little risk. Most of the species for which entry is approved also require post-entry quarantine. The Australian system has been shown to produce net bioeconomic benefits (Keller *et al.* 2007).

Other countries, such as New Zealand, require post-entry quarantine of all imported whole plants and cuttings. In the US, post-entry quarantine is required for certain genera of plants; for example, grapevines and fruit trees are imported into a post-entry quarantine program called the National Clean Plant Network (NCPN), under which incoming germplasm is screened for pathogens and maintained as a source of pathogen-free propagative material for industry. Expanding NCPN to include ornamental plants would be an expensive, but probably effective, option.

Smuggling of plant germplasm may increase with trade restrictions. Rigorous enforcement of regulations will need to be coupled with aggressive consumer/importer education programs that highlight the importance of compliance to protect natural resources.

There is, moreover, an intrinsic weakness in any system that relies on knowing what pests exist on ornamental crops in the country of origin, because such background knowledge is not robust (Simberloff 2000, 2001; Reaser *et al.* 2008). This difficulty plagues both “black list” and “white list” countries. One widely respected and outspoken critic points out that pests that coevolved with hosts in the country of origin are unlikely to be damaging enough there to allow experts to predict their risk in novel ecosystems and hosts (Brasier 2008).

Although reducing the lag time to limit introductions once pest threats are recognized, the new NAPPRA category still depends on advance knowledge of existing pest threats. Yet most microorganisms are as yet unknown to science. In 2009 alone, 6129 unique combinations of “country of origin” and “plant genus” were imported into the US. Such a diversity of plant imports increases the introduction likelihood of potential pests and diseases that these plants might harbor. Expansion of offshore information gathering, through systems such as APHIS Offshore Pest Information Program and the Sentinel Plant Network, which could collect data on pests of plants native to the US that are growing abroad, would help inform list-based systems.

The integrated systems approach called for by the North American Plant Protection Organization standard, and being explored by the IPPC, offers the potential to address this unknown diversity of pests. However, expanded partnerships between the research community and the nursery industry are needed to develop best management practices that provide affordable and broadly effective pest management systems.

Further research is necessary to evaluate the costs and benefits of various approaches to reducing pest risk in live plant imports. However, it is unrealistic to expect any single approach to solve the problem of pest imports via the plant trade pathway. A holistic system, relying on improvements in offshore production practices, plant-tracking systems, risk-based inspection procedures, and more effective phytosanitary practices in receiving nurseries, would be more likely to reduce risks to an acceptable level.

As global trade expands, our knowledge of pest pathways must be improved to ensure trade is accomplished with minimal environmental degradation. Agricultural quarantine inspection monitoring surveys, such as AQIM, can provide very useful information on the efficacy of current practices, as demonstrated here. Such robust sampling of other high-risk commodities can inform prevention activities to address other critical pest pathways, such as wood packaging materials.

### ■ Acknowledgements

This work was conducted as part of the working group “Plants for Planting” at the National Center for Ecological Analysis and Synthesis (NCEAS). It was sup-

ported by The Nature Conservancy, the New Zealand Foundation for Research Science and Technology (CO2X0501 Better Border Biosecurity), and NCEAS, which is funded by the National Science Foundation (grant #DEB-0553768); the University of California, Santa Barbara; and the State of California. We thank F Lowenstein for helping to conceive this study; J Cavey, R Komsa, and C Katsar for invaluable assistance in providing and interpreting USDA-APHIS interception data, shipment disposition data, and release shipment data; G Muraoka, M Cazier-Mosley, and D Farmer for providing information on inspection staff at Plant Inspection Stations; A Rossman, S Frankel, and B Moltzan for assistance in assessing likelihood of plant pathogen introduction pathways; U Hoyer-Tomiczek and T Schröder for photographs; and V Allison, M Kenis, S Pfister, I Berlinger, S Wager-Page, C Brasier, B Von Holle, T Stohlgren, R Haack, S Frankel, C Marassas, and J Cavey for their reviews of an earlier draft of the manuscript.

### ■ References

- Aukema JE, McCullough DG, Von Holle B, *et al.* 2010. Historical accumulation of non-indigenous forest pests in the continental United States. *BioScience* **60**: 886–97.
- Aukema J, Leung B, Kovacs K, *et al.* 2011. Economic impacts of non-native forest insects in the United States. *PLoS ONE* **6**: e24587.
- Benedict WV. 1981. History of white pine blister rust control – a personal account. Washington, DC: USDA Forest Service. FS-355.
- Bradley BA, Blumenthal DM, Early R, *et al.* 2012. Global change, global trade, and the next wave of plant invasions. *Front Ecol Environ* **10**: 20–28.
- Brasier C. 2008. The biosecurity threat to the UK and global environment from international trade in plants. *Plant Pathol* **57**: 792–808.
- Brockerhoff EG, Bain J, Kimberley M, and Knížek M. 2006. Interception frequency of exotic bark and ambrosia beetles (Coleoptera: Scolytinae) and relationship with establishment in New Zealand and worldwide. *Can J Forest Res* **36**: 289–98.
- Fowler G, Garrett L, Neeley A, *et al.* 2007. Economic analysis: risk to US apple, grape, orange and pear production from the light brown apple moth, *Epiplatys postvittana* (Walker). [www.aphis.usda.gov/plant\\_health/plant\\_pest\\_info/lba\\_moth/downloads/lbameconomicanalysis.pdf](http://www.aphis.usda.gov/plant_health/plant_pest_info/lba_moth/downloads/lbameconomicanalysis.pdf). Viewed 13 May 2011.
- Haack RA, Herard F, Sun J, and Turgeon JJ. 2010. Managing invasive populations of Asian longhorned beetle and citrus longhorned beetle: a worldwide perspective. *Annu Rev Entomol* **55**: 521–46.
- Hall KM. 2009. Cost analysis of quarantine zone size and control policy for an invasive forest pathogen (MS thesis). Corvallis, OR: Oregon State University.
- IPPC (International Plant Protection Convention). 2006. Specification 34. Pest risk management for plants for planting in international trade. [https://www.ippc.int/file\\_uploaded/1149501210618\\_Spec34\\_Plants\\_for\\_planting.doc](https://www.ippc.int/file_uploaded/1149501210618_Spec34_Plants_for_planting.doc). Viewed 13 May 2011.
- Ivors K, Garbelotto M, Vries IDEC, *et al.* 2006. Microsatellite markers identify three lineages of *Phytophthora ramorum* in US nurseries, yet single lineages in US forest and European nursery populations. *Mol Ecol* **15**: 1493–1505.
- Keller RP, Lodge DM, and Finnoff DC. 2007. Risk assessment for invasive species produces net bioeconomic benefits. *P Natl Acad Sci USA* **104**: 203–07.
- Kenis M, Rabitsch W, Auger-Rozenberg M-A, and Roques A.



2007. How can alien species inventories and interception data help us prevent insect invasions? *B Entomol Res* **97**: 489–502.
- Lockwood JL, Cassey P, and Blackburn T. 2005. The role of propagule pressure in explaining species invasions. *Trends Ecol Evol* **20**: 223–28.
- Mascheretti S, Croucher PJP, Vettraino A, *et al.* 2008. Reconstruction of the sudden oak death epidemic in California through microsatellite analysis of the pathogen *Phytophthora ramorum*. *Mol Ecol* **17**: 2755–68.
- McCullough DG, Work TT, Cavey JF, *et al.* 2006. Interceptions of nonindigenous plant pests at US ports of entry and border crossings over a 17-year period. *Biol Invasions* **8**: 611–30.
- Merrill W. 1988. White pine blister rust: a brief summary of its history, host range and distribution, disease cycle, host–parasite relationships, damage caused, rate of disease increase, and control. A report. Albany, NY: Northeastern Forest Pest Council.
- Mielke JL. 1943. White pine blister rust in western North America. New Haven, CT: Yale University. School of Forestry Bulletin 52.
- NAPPO (North American Plant Protection Organization). 2005. Integrated pest risk management measures for the importation of plants for planting into NAPPO member countries. <http://www.napso.org/en/data/files/download/PDF/RSPM24-16-10-05-e.pdf>
- New Zealand Ministry of Agriculture and Forestry. 2011. MAF-BNZ interception database, interceptions of *Epiphyas postvittana* from Australia. Wellington, New Zealand: New Zealand Ministry of Agriculture and Forestry.
- Palm ME and Rossman AY. 2003. Invasion pathways of terrestrial plant-inhabiting fungi. In: Ruiz M and Carleton JT (Eds). Invasive species: vectors and management strategies. Washington, DC: Island Press.
- Pimentel D, Zuniga R, and Morrison D. 2005. Update on the environmental and economic costs associated with alien-invasive species in the United States. *Ecol Econ* **52**: 273–88.
- Reaser JK, Meyerson LA, and Von Holle B. 2008. Saving camels from straws: how propagule pressure-based prevention policies can reduce the risk of biological invasion. *Biol Invasions* **10**: 1085–98.
- Rieske LK. 2007. Success of an exotic gallmaker, *Dryocosmus kuwiphilus*, on chestnut in the USA: a historical account. *EPPO Bulletin* **37**: 172–74.
- Roques A, Rabitsch W, Rasplus J-Y, *et al.* 2009. Alien terrestrial invertebrates of Europe. In: Nentwig W, Hulme P, Pysek P, and Vila M (Eds). Handbook of alien species in Europe. Dordrecht, Netherlands: Springer-Verlag.
- Rossman AY. 2009. The impact of invasive fungi on agricultural ecosystems in the United States. *Biol Invasions* **11**: 97–107.
- Simberloff D. 2000. Non-indigenous species: a global threat to biodiversity and stability. In: Raven P and Williams T (Eds). Nature and human society: the quest for a sustainable world. Washington, DC: National Academy Press.
- Simberloff D. 2001. Biological invasions – how are they affecting us, and what can we do about them? *West N Am Naturalist* **61**: 308–15.
- Smith RM, Baker RHA, Malumphy CP, *et al.* 2007. Recent non-native invertebrate plant pest establishments in Great Britain: origins, pathways, and trends. *Agric For Entomol* **9**: 307–26.
- Spaulding P. 1911. The blister rust of white pine. Washington, DC: USDA Bureau of Plant Industry. Bulletin No 206.
- Suckling DM and Brockerhoff EG. 2010. Invasion biology, ecology, and management of the light brown apple moth (Tortricidae). *Annu Rev Entomol* **55**: 285–306.
- USDA (US Department of Agriculture). 2010. Species profiles: citrus longhorned beetle. [www.invasivespeciesinfo.gov/animals/citrusbeetle.shtml](http://www.invasivespeciesinfo.gov/animals/citrusbeetle.shtml). Viewed 5 Apr 2011.
- USDA-APHIS (US Department of Agriculture-Animal and Plant Health Inspection Service). 2004. Advanced notice of proposed rulemaking and request for comments 7 – CFR – Part 319. Washington, DC: Code of Federal Regulations. Docket No 03-069-1.
- USDA-APHIS (US Department of Agriculture-Animal and Plant Health Inspection Service). 2011a. Importation of plants for planting: establishment of category of plants for planting not authorized for importation pending a pest risk analysis. [www.regulations.gov/#!documentDetail;D=APHIS-2006-0011-0267](http://www.regulations.gov/#!documentDetail;D=APHIS-2006-0011-0267). Viewed 26 Oct 2011.
- USDA-APHIS (US Department of Agriculture-Animal and Plant Health Inspection Service). 2011b. Importation of plants for planting: risk-based sampling and inspection approach and propagative monitoring and release program (Docket No APHIS-2011-0092). Washington, DC: Government Printing Office. Federal Register Notice 76(203): 65165–66.
- US Department of Commerce. 2011. Foreign trade statistics. [www.census.gov/foreign-trade/about/index.html](http://www.census.gov/foreign-trade/about/index.html). Viewed 13 May 2011.
- Venette RC, Davis EE, DaCosta M, *et al.* 2003. Mini-risk assessment: light brown apple moth, *Epiphyas postvittana* (Walker) (Lepidoptera: Tortricidae). [www.aphis.usda.gov/plant\\_health/plant\\_pest\\_info/pest\\_detection/downloads/praeostvittanapra.pdf](http://www.aphis.usda.gov/plant_health/plant_pest_info/pest_detection/downloads/praeostvittanapra.pdf). Viewed 28 Jul 2010.
- Von Holle B and Simberloff D. 2005. Ecological resistance to biological invasion overwhelmed by propagule pressure. *Ecology* **86**: 3212–18.
- Weber GA. 1930. The Plant Quarantine and Control Administration: its history, activities and organization. Washington, DC: Brookings Institute. Institute for Government Research Service, Monographs of the United States Government, Gov No 59.
- WISC (Washington Invasive Species Council). 2009. Wood-boring beetles. [www.invasivespecies.wa.gov/priorities/wood\\_boring\\_beetles.shtml](http://www.invasivespecies.wa.gov/priorities/wood_boring_beetles.shtml). Viewed 28 Jul 2010.
- Work TT, McCullough DG, Cavey JF, and Komsa R. 2005. Arrival rate of nonindigenous insect species into the United States through foreign trade. *Biol Invasions* **7**: 323–32.