

Analysis of Boater Pass Data on the Deschutes River

Rebecca L. Johnson, College of Forestry
Denise Steigerwald, College of Forestry
Marlys Cappaert, MDW

Submitted to Oregon Parks and Recreation Department

December 2, 2002

Institute for Natural Resources

OREGON STATE
U n i v e r s i t y

Analysis of Boater Pass Data on the Deschutes River

BACKGROUND

Deschutes River Boater Pass data were analyzed by the Oregon Parks and Recreation Department (OPRD) up through 1997. At that point, OPRD contracted with the Bureau of Land Management (BLM) to take over the process. When the 1998 boater pass data were analyzed, the annual use for Segment 2 showed a marked increase compared to the 1997 use figures. On Segment 2 in 1997, OPRD estimated 64,810 boaters during the peak season, while BLM estimated 82,053 on Segment 2 in 1998 (OPRD, Proposal to Resolve Deschutes River Boater Use Levels, July 18, 2001). This discrepancy has caused different parties to doubt the accuracy of both the OPRD and BLM figures. The issue became critical because high seasonal and/or daily use figures can trigger a limited entry system, according to the Final Lower Deschutes River Management Plan. However, it was uncertain whether the higher use figures were from an actual increase in use, or from differences in the method of analyzing boater pass data between OPRD and BLM. When the same 1998 boater passes were entered into the old OPRD system, the estimated use levels were considerably lower for Segments 2 and 3 and higher in Segments 1 and 4 (OPRD, Proposal to Resolve Deschutes River Boater Use Levels, July 18, 2001).

A number of different systems have been used to estimate boater use over the 1990-2001 period, making it difficult to trace the source of discrepancies in the final estimates. For example, the boater passes have changed over the years. From 1990-92, boaters would simply check off the river segments they were intending to boat. After 1992, they were asked for their launch and take-out locations, and after 1997, the check boxes were taken off the boater pass form. There have also been differences in how incomplete or inaccurate boater passes have been handled. Finally, there are differences in the computer programs that transform the boater pass data into segment and overall use estimates.

Without agreement and confidence in the boater use estimates, management decisions become difficult. The interested parties were unable to come to an agreement about the reasons for the boater use level discrepancies, and asked the Institute for Natural Resources (INR) to research the issue.

OBJECTIVES

The goal of the INR report is to identify and explain the reasons for the boater use level discrepancies recorded by BLM and OPRD. Items listed in subparagraphs 1-7 help to achieve the goal as stated.

1. Identify and explain the assumptions and methodology used to compute the 1990 boater use levels in each segment, defining 1990 as the baseline from which “use targets” were defined in the 1993 Lower Deschutes River Management Plan.
2. Identify and describe any changes in assumptions and methodology that took place after 1990 (between 1991 and 2001), including alteration in boater pass forms and changes in computer programs. Based on the information available, explain the difference in the OPRD and BLM systems. If available information is not sufficient to explain the differences, INR will identify the needed information.
 - a. Identify and describe those human methods employed by each agency to analyze and calculate numbers from incomplete boater pass data.
 - b. Identify the methodology and assumptions used to compare the 1990 boater pass data to each year OPRD and BLM collected and processed data.
3. Explain, based on the boater pass information available between 1990 and 2001, the disparity or difference in the data during this period of time.
4. Identify from existing boater pass data the seasonal and daily boater use, by segment, from 1990 through 2001. These data will be reported on a monthly and annual time series.
5. Estimate what boater targets would have been in 1990 if the KMX system currently employed by BLM had been used in 1990.
6. Explain the “margin of error” or any biases identifiable from factors such as data entry error, incomplete passes, or assumptions identified in the analysis.
7. INR shall collaborate and communicate with the Data Committee throughout the process, discussing assumptions, problems encountered, and alternative ways of approaching and solving problems.

These seven objectives address one phase in potentially resolving the discrepancies and implementing the management plan. A second phase depends on the results from the proposed work and would address the question of what to do about river access management given the new set of consistent data. This proposal does not address work subsequent to the development of a consistent set of data.

METHODS

Original boater pass data were collected for all years since 1990. Unfortunately, the 1990 data set was incomplete and only had full records for the first few months of the year. There were partial records for the summer months, and by October there were no passes recorded for the rest of the year. All the other years had complete data sets.

The datasets were available in different electronic formats for the years 1990-00. These data were examined for consistency in structure, and where necessary, modified to be consistent with the most recent data structure. As stated previously, in 1990-92, boaters were asked to check boxes to indicate which of the four river segments they were going to use. Since 1993, boaters have been asked to specify their put-ins and take-outs, and in some of those years they were also asked to check boxes for each segment. In the most recent years, however, the check boxes for each segment have not been used. The result is that a single program could not be run on each year's data. In order to make the data sets consistent, the launch and take-out information on each pass in later years was converted to an appropriate check box.

The methodologies, and sometimes the computer programs, that were originally used to convert boater pass data to daily use on each river segment were available to various degrees. For the early years, memos existed which laid out the assumptions used to calculate segment use, but computer programs (if any were used) were not available. The Microsoft Access program that was used from 1994-97 by OPRD was available. That program was inspected line by line to see if it used the same assumptions (known as the Eixenberger assumptions) that were used in 1990-93.

Description of changes to the methodology over the years was based on examination of boater passes, databases and programs, and discussions with analysts from the different agencies/companies that have been involved over the years. Where necessary information was missing (e.g., the computer program used from 1990-93), this will be noted in the results.

In order to create a consistent set of boater use estimates over time, a new program was written that encompasses the most current interpretation of the Eixenberger assumptions. This program uses the same allocation table as KMX is currently using to allocate boater passes to specific days and segments. The SAS™ programming language was used to create this new program, and the data sets for each year were modified to check-box format, as described above. This allowed the same program to be run on all the data sets to provide a consistent set of boater estimates from 1991-2001.

“Margin of error” is a statistical concept that suggests that the true value lies within some confidence interval of an estimate. Because we are not drawing a

sample from a population, we cannot calculate this same statistical measure. But we can calculate the similarity between estimates using two different methods. For example, we calculated the percentage difference between the boater estimates for 2001 using the new program and those produced by KMX. We also identified outright errors in programming, or biases in results from a particular method. For example, Eixenberger assumed that all passes that were marked with both Segments 2 and 3 were marked incorrectly, and he put all the use in Segment 2 only. To the extent that some of those boaters really did use Segments 2 and 3, his results are biased.

Finally, collaboration with the Data Committee was critical for this project. We met with the Data Committee three times to review progress, and joined the manager's meeting via conference call for another briefing. The Data Committee will also be given the draft final report to review.

RESULTS

Results will be presented by project objectives.

Objective 1 – 1990 Assumptions and Methodology

OPRD was unable to locate the computer program used in 1990 to calculate boater use by segment and day. Based on the format of the data files provided for 1990-93 (.dbf files), it is likely that a dbase program was used, but it also could have been done in a spreadsheet format. The only data file from 1990 that OPRD was able to find was incomplete, and had partial records for the latter half of the year. Due to the lack of computer program and lack of a complete data set, we relied on the written documentation produced during this time period.

The assumptions and methodology used to compute 1990 boater use levels in each segment are described in a series of memos and letters from Don Eixenberger, Research Analyst for OPRD. These methods and assumptions can be broadly categorized under three main headings:

- a. Allocation of use to river segments and days, including what has become known as the "roll-up" factor.
- b. Calculation of an annual pass factor to account for use by boaters holding an annual pass.
- c. Calculation of a "bad pass" factor to account for use on passes that are incorrectly filled out.

With respect to (a), there is an October 20, 1989 memo and a November 16, 1994 memo from Eixenberger (see Appendix A) that each use the exact same words to describe allocation of use to river segments. We can therefore reasonably assume that the same assumptions were used in 1990. These are the assumptions stated in the memos:

“For use through Sections 1 and 2 it was assumed that Section 1 was the primary boating section, and Section 2 the take-out section. For example, a boater boating three days was considered to be boating three days in Section 1. On the third or last day, the boater would enter Section 2 and take-out. This would count as one days use in Section 2 (throughout these analyses, a boater was defined as any part of a day as indicated on the pass).

This method was used for all boater using both Sections 1 and 2.”

[Notice that the above example results in four boating days (three in Segment 1 and one in Segment 2), even though the boater was only on the river for three days. This has become known as the “roll-up factor” and is the source of much confusion and debate about the boater use estimates. It is not uncommon for recreation planners and managers to use “recreation days” as a unit of measurement for recreation use. A recreation day is defined as “a visit by one individual to a recreation area for recreation purposes during any reasonable portion or all of a 24-hour period of time.”¹ Therefore, a person spending 8 hours in Segment 1 and 1 hour in Segment 2 counts as one recreation day in each Segment.]

“For boaters using both Sections 3 and 4, the situation is reversed. Section 3 was considered primarily a put-in area for those boating both 3 and 4. As an example, for a boater boating three days through both sections, one day, the first day, was counted for Section 3. On that same day, the boat was assumed to enter Section 4 and continue the three day trip and three days were counted for Section 4. However, this does not deal with the possibility that a jet boater may enter on Section 4 and boat upstream to Section 3. But at this time, we have no data to account for this.”

With respect to boaters who marked Segments 2 and 3, the 1989 memo states, “Another problem stems from an error in the map displayed on the pass. Section 2 is shown as ending at Sandy Beach well above Sherars Falls. Consequently, Section 2 boaters taking out below Sandy Beach would mark both Sections 2 and 3. Initial analyses showed inordinate numbers of boaters indicating they boated both sections. This map error may be corrected for the 1990 passes. To correct this, I excluded all boating days for Section 3 for those boaters who indicated they boated both Sections 2 and 3.”

Although we don’t have a copy of the 1990 boater pass form, an April 30, 1990 memo states that “this map error has been corrected on the the 1990 pass.” However, the map error was still present in the 1992 boater pass form, so there is some doubt as to whether it was corrected in the 1990 form. The 1994 memo states:

¹ Loomis, John B. and Richard G. Walsh. 1997. Recreation Economic Decisions: Comparing Benefits and Costs. Venture Publishing, State College, Pennsylvania, p. 28

“Some boaters marked Section 2 and 3. Due to the imposition of Sherars Falls and some map ambiguities, it was assumed that these boaters did not actually boat into Section 3.”

Finally, in the December 8, 1994 memo at the beginning of the 1993 boater report, Eixenberger discusses the assumption he uses for passes where a boater enters in Segments 1 or 2 and boats all the way to Segment 4. He states:

“Both Sections 3 and 4 are impacted by boaters entering in Sections 1 or 2 and indicating they boated to Section 4. In a very small number of these cases (less than 200 passes), the boaters said they were boating one or two days. Department staff felt this was too long a trip to be made in so few days and that these passes were in error and should be excluded from the estimates. For those passes indicating three days or more, they were apportioned as contributing one day in Section 3 and one day in Section 4 and were so calculated.”

Although this last statement seems incomplete, it could be assumed that the remainder of the days were allocated to Segments 1 and 2. However, for a trip longer than four days, it's not clear how many days would be allocated to Segment 1 vs. 2 when a trip originates in Segment 1 and ends in Segment 4. This is also the first year that Eixenberger explicitly recognizes a pass that goes through all four segments as valid (see Appendix A for earlier memos). In previous years, he called passes with all boxes checked “bad passes” and included them in the bad pass factor. Apparently the new boater passes in 1993 that included put-in and take-out information gave Eixenberger more confidence when interpreting whether people actually boated all four segments than when only check boxes were used.

With respect to the calculation of an annual pass factor, Eixenberger used the assumption of 12 trips per year for each annual pass. His March 22, 1991 memo attached to the 1990 boater use report states:

“Past surveys indicate annual pass holders boat 12 days a year. Including annuals, there were an estimated 138, 447 boating days in 1990; daily pass holders accounted for 105, 639 of these days. This results in a 1.31 to 1 ratio. This 1.31 ratio was used as the multiplier to daily pass counts in estimating the overall daily river use.”

This same assumption of 12 trips per year for each annual pass is still being used today, and has been consistently applied over the years.

With respect to the calculation of a bad pass factor, the same March 22, 1991 memo states:

“When estimating daily use by section another problem is encountered. Many passes were unusable. About 8% had no sections indicated; 33% had all sections filled in. Consequently, these passes were unusable for sectional analyses. Useable passes accounted for 72,273 boating days, a 1.92 ratio to the estimated 138,447 boater days overall. This 1.92 ratio was used as the multiplier to daily counts in estimating sectional river use.”

Notice that the annual passes are already accounted for in the total boater days of 138,447, so the annual pass factor is embedded in the 1.92 ratio (i.e., the daily counts from good passes are NOT multiplied by both 1.31 and 1.92).

Objective 2 – Changes in Methods Over Time

Changes in the Boater Pass Form

OPRD provided copies of boater pass forms from 1992-2000 (see Appendix B). Assuming that the boater pass form from 1990 is the same as 1992, the form was quite simple, but without much guidance for filling it out. The map on the right side of the form had a check-box next to each segment of the river and the user was to mark each segment that would be run during the trip. There were very few landmarks on the map, and the location at each boundary between segments was marked with one word on each side of the line. For example, the line between Segments 1 and 2 had the word “Locked” above it and “Gate” below it. This could have created confusion over which segments these boundary landings were actually located. The pass also recorded the number of people in the boater’s party and the trip starting and ending date. Because of the high number of bad passes in 1990, vendors were asked to assist boaters when filling out the 1991 boater pass. This resulted in the number of bad passes going from 41% in 1990 to 19% in 1991.

In 1993, the boater pass was changed in a number of ways. Boaters were now asked for their launch and take-out points, in addition to filling in the check-boxes. The map was significantly enlarged with more landmarks, especially in Segment 2, and all locations were properly located on the map. This was also the first year that Segment 1 was shown split into Segments 1a and 1b, with corresponding check-boxes for each of those segments. Boaters were also asked to indicate whether their trip was motorized or non-motorized. Instructions were added in small print on the form that stated, “Trip information is used for statistical purposes. Please be as accurate as possible.”

In 1996, OPRD removed the river mile markers on the lines between segments, but otherwise the map was the same. The statement asking people to be as accurate as possible was moved to the top of the form and made much more prominent.

In 1997, the statement requesting accuracy was replaced at the top of the form with the following: “This pass is not valid on dates and affected river segments when a limited entry system is in effect.” Long Bend and Devil’s Canyon were taken off the map, and a warning for Whitehorse Rapids was added.

In 1998, the check-boxes were taken off the boater pass forms, and information from launch and take-out were used to identify which segments the boater used during the trip. The form had no statement at the top regarding either accuracy or limited entry systems. Two boxes were added within the form to distinguish the State Boater Pass Fee of \$2.00 and the BLM Weekend Boating Fee of \$3.00, and river toilet dumping stations were marked.

In 1999, Long Bend was added back to the map, and it appears to be right on the line between Segment 1B and Segment 2. Check-boxes were added to indicate whether the trip was guided or non-guided, and the check-boxes for indicating motorized use were removed. A warning to take out at Sandy Beach before Sherar’s Falls was also added.

Although other things changed on the boater pass form over time, none of them are relevant to calculating boater use by segment or day. Those changes can be seen on the copies of the boater pass forms in Appendix B, but will not be discussed here.

Handling of Bad Passes

Defining a Bad Pass

Over the years there have been different definitions of what constitutes a bad pass. From 1990-92, it is clear from the Eixenberger memos (see Appendix A) that passes with all boxes checked or no boxes checked were called bad passes. There is nothing in the memos to indicate whether passes with non-sequential segments checked were called bad passes or not, but these make up a very small percentage of passes (<1%). In 1993, it appears that some, but not all, passes with all boxes checked were considered bad passes. Eixenberger’s November 16, 1994 memo states:

“In calculating use by section, many passes were unusable due to no boating sections being marked, or all sections being marked in numbers known to be erroneous. ... In 1993, the number of unusable passes due to missing sectional data dropped to two percent.”

The second sentence above implies that he only considered passes with missing segment data as bad passes. As stated earlier, this is also the year that he included assumptions for someone starting a trip in Segment 1 or 2 and finishing in Segment 4, which would include passes with all boxes checked. The most plausible interpretation of the memo is that passes with all boxes checked that

had consistent launch and take-out points, and were 3 days or greater in length, were included as good passes, while other passes with all boxes checked were considered bad passes.

From 1994-97, the OPRD program had a series of checks to identify bad passes. Before updating any records on the Boater Pass – Data Entry form of the OPRD database, the Boater Pass Check procedure is run. Within that procedure, other “sub-procedures” or macros are called up. The table in Appendix B goes through the steps taken to make these checks. If the error code is not blank after taking these steps, the program looks at the code that is entered, and then proceeds to the appropriate field on the data entry form for the user to correct it. Discussions with an OPRD employee who entered data during this time period revealed that whenever possible, other information on the pass was used to correct errors or missing information. However, there were still a number of passes that were entered with missing fields or illogical data, and were assigned an error code.

For any boater pass that was assigned an error code, the program included that record in the tally of bad passes. Notice that the program did not correct passes where segment checked was inconsistent with launch or take-out point. While some may argue that launch and take-out are more likely to be correct than the check-boxes, and therefore could have been used to override the erroneous check-box, the conservative interpretation is that the analyst cannot know which of the two entries is correct, and the pass should be labeled as bad. Table 1 shows the number and percent of cases where launch and take-out point did not correspond to segments marked on the pass.

Table 1. Inconsistencies between launch/take-out and check-boxes

YEAR	# of Daily Passes (%)
1993	952 (7.4%)
1994	325 (2.7%)
1995	987 (6.4%)
1996	587 (3.8%)
1997	1297 (8.9%)

From 1998-2000, the BLM program identified bad passes during data entry. When an error occurred, a warning was given on the screen and the program code was called up that generated that error. The user could exit the program and the incomplete/incorrect record could be saved in the database. When that record was called up again, a message was provided regarding its incompleteness.

Validation routines existed to check for errors such as no takeout point, invalid starting date, no launch point, void pass, etc. Multiple messages could be stored in the ‘alert_code’ field based on what the program found.

If an error code existed for a record, it was not represented in the Use Allocations table and was not processed with the clean records. Many of these were voided or superceded records. The number of daily passes not represented in the Use Allocations table but present in the master table was divided by the number of daily passes in the master table for the year of interest (with the voided, superceded and stolen pass records excluded). For 1998, the numbers were $65/20172 = 0.3\%$ and for 1999, they were $31/15091 = 0.2\%$. Thus, more than 99% of the records were present in the Use Allocations table and the Deschutes boater reports.

From 2001 to the present, the KMX system has been used. In this system, incomplete boater passes were assigned to one of four scenarios. The number of boater days (number of people times number of trip days) was determined for each scenario. In two of the four scenarios the data was entered based on the assumptions given. In two cases the data was not entered and the use was not included in the Boater Pass report.

Scenario Descriptions and results:

Scenario # 1 – The Launch and Takeout Point are the same – all use will be assigned to the segment where the Launch and Takeout is located. If this point is at a boundary location it will be assigned to the upstream segment. There were 33 passes with **133 boater days** with this scenario.

Scenario #2 – Both Launch and Takeout point missing – Data not entered. There were 32 passes with **99 boater days** with this scenario.

Scenario #3 – Either Launch or Takeout point missing – Entered data based on issue date/trip length/launch/takeout logic. There were 66 passes with **374 boater days** with this scenario.

Scenario #4 – Both Launch and Takeout dates missing – Data not entered. There were 25 passes with **148 boater days** with this scenario.

In 2001, the total use associated with incomplete passes that are entered into the database (Scenarios 1 and 3) is 507 boater days and represents 0.44% of the total boater days. The total use associated with incomplete passes not entered (Scenarios 2 and 4) is 247 boater days and represents 0.21% of the total boater days.

KMX has not decided how to handle the use associated with the passes not entered but the amount of use involved would not have a significant impact on the seasonal or daily use levels for any segment. The following examples were developed based on distributing the use associated with the passes not entered according to the distribution of the daily boater days. The daily total for a typical

Segment 1 peak day of 500 boater days would increase to 501 boater days. A 2,000 boater peak day on Segment 2 would increase to 2,004 boater days.

Allocating Bad Passes

From 1990-97, all boater use represented by bad passes was added to the daily boater count from good passes in the same pattern (segment and day) as good passes. In 1992, however, Eixenberger made an adjustment to his allocation of bad passes from 1990. His July 9, 1992 memo attached to the 1991 boater use report states:

“In 1991, pass vendors were encouraged to assist boaters in correctly marking the sections boated. This resulted in considerable improvement. In 1990, about 41% of all daily passes were incorrectly marked; in 1991, 19% were incorrectly marked. This improvement resulted in different use levels by section. Apparently, in the past greater numbers of incorrect passes were produced by boaters in section 2; consequently, use in section 2 was substantially underestimated. To compensate for this, I’ve reestimated sectional use in 1990 using proportional use by section estimated for 1991. I believe these estimates to be more reflective of sectional use for those years.”

While the 1991 boater use report contains these revised figures for 1990 (designate this 1990 Report B), the plan targets are based on the original 1990 boater use report (designate this 1990 Report A). Pages 45-48 of the management plan show 1990 use levels for Segments 1, 2, and 4 that are identical to those found in Report A, while Segment 3 use was adjusted by planners when setting the targets because they didn’t think the 1990 use levels in Segment 3 were realistic (as reported by Brian Cunningham at the Data Committee meeting in Bend).

As noted in the previous segment, from 1998-2001, any use represented by bad passes was not added back into overall boater use. However, reports from these years indicate that less than 1% of passes were in this category.

Allocating Use to Segments

From 1990-93, the same methods described for the 1990 allocation were used (see section on 1990 methods and assumptions). After 1993, a consultant was hired to write an Access program to allocate use to days and river segments. Although the 1994-97 boater pass included information on launch and take-out points, the program used data from check-boxes to allocate use to segments. In most cases, the Access program followed the Eixenberger assumptions when allocating use, but there were two major errors found in the program.

Between 1994 and 1998, the OPRD program incorrectly allocated multiple day passes covering Segments 1 and 2: the last day of these trips was being assigned to Segment 1 instead of Segment 2. This produced incorrect numbers for Segments 1 and 2 throughout this period. Correcting this error generated the following differences in the annual totals for these segments:

Table 2. Impact of OPRD programming error

Year	Sec 1(old)	Sec 1(rev)	Sec 2(old)	Sec 2(rev)
1995	56463	43215	70895	84144
1996	59315	45597	80375	94037
1997	51641	40006	68047	79683
1998	48368	37469	64194	75080

The second error in the program allocated use for the following trips only to Segment 4:

- Segments 1, 2 and 4
- Segments 1, 3 and 4
- Segments 1 and 3
- Segments 1 and 4
- Segments 2 and 4
- Segments 2 and 3

Of these, only the last trip over Segments 2 and 3 represents a significant amount of use. For example, this added ~5% use to Segment 4 for each of these years that was not completely accurate.

These two programming errors account for the large discrepancy between the boater use estimates from the OPRD and BLM systems between 1997 and 1998. Both errors divert a large amount of use away from Segment 2. The first error adds boater days to Segment 1 erroneously, and the second error adds boater use to Segment 4 erroneously.

In 1998 and 1999, the BLM system was used to allocate boater use to segments and days. This system used an allocation table that was intended to represent the Eixenberger assumptions. However, it also added some new assumptions to account for more complicated trips, such as upriver trips between Segments 4 and 3. The BLM system did not rely on check-boxes, but instead used launch and take-out information to allocate use. An August 15, 2000 memo from Steve Brutscher (OPRD) commented on the perceived consistency of the BLM allocation table with the original Eixenberger assumptions. Of 17 possible trips represented on the allocation table, Brutscher concurred with 9 (see memo in Appendix C).

In 2000, KMX was hired to take over the boater pass system. They also used launch and take-out information combined with an allocation table. The current KMX allocation table was compared to both the BLM allocation table and Brutscher's comments from his memo. Table 3 depicts the comparison. Out of 17 total allocations that were compared in 1998, there were 8 suggested adjustments by Brutscher, and by 2002, the KMX system conformed to 6 of those adjustments.

Other Changes

There were a few other changes in the boater pass system over time that could impact the daily boater use estimates. From 1990-93, there aren't any references to a limit on either the number of people per trip or the number of days per trip. From 1994-97, days per trip were limited to 25 and people per trip were limited to 30. From 1998-2000, a limit of 20 days per trip was imposed, and in 2001 that was changed to 14 days per trip. From 1998-2001 the number of people per trip were limited to 24.

There were other changes in the boater pass system over time, but they did not impact the estimates of boater use by day and segment.

Objective 3 – Difference in Data Between 1990 and 2001

The actual data sets from 1990-2001 were in different electronic formats. As mentioned previously, it is assumed that data from 1990-93 were created and stored in a dbase format, while data from 1994-97 were in an Access format. From 1998-2000, an updated version of Access was used, and from 2000-01 Sequel Server was used.

Because the boater pass forms changed over time, there were different numbers of variables across the years, which means that the data sets did not have a consistent structure over time. For example, when launch and take-out points were added, two additional columns were added to the data set. In order to apply a single allocation program to these different data sets, the same variables had to be included in each, and missing or derived values assigned for the years when the variables did not exist (eg. assign a takeout point tied to Segment 4).

Objective 4 – Calculate Boater Use by Segment with Consistent Method

In order to create a consistent time series of boater use between 1990 and 2001, the current allocation table (as represented in the KMX system) was used as the basis for a new program that could be applied to the original data sets over time. The new program was written in SAS™ and replicated the 2001 KMX peak boater use estimates within 0.17%.

Figure 1 shows total annual boater days from 1991-2001 using the new program and original data sets, and Figure 2 shows the use during the peak season (May 15-September 15 for Segments 1, 2, and 3, and May 15-October 15 for Segment 4). The general trends show use declining slightly from 1991 to 1994, then rising sharply to a peak in 1996. Use then declined sharply and has remained fairly steady since 1998.

The high spike in Segment 3 use in 1992 is from an anomaly in the data. The 1992 data had 19% of total passes marked for Segment 2-3 trips, while the surrounding years had only 4% of this type of trip. Eixenberger noted this problem with the 1992 data when he declined to produce a report by segments for that year. Using the current allocation logic, Segment 3 receives most of the use from trips that include both Segments 2 and 3, accounting for the high spike on the graph. While it is nearly certain that the 1992 use in Segment 3 was not as high as shown in Figures 1 and 2, it is not clear how to correct the estimates. The memos contain no speculation as to why there are so many Segment 2-3 trips in 1992, nor what type of trips they may actually represent.

Figure 3 shows Segment 2 annual use compared to total passes sold and total boater days over time. The data for passes sold and total boater days came from a report compiled by BLM and OPRD (see Appendix). Total boater days represent use on the river before any allocation to segments, and therefore do not include the roll-up factor. It is simply a summation of the number of boaters times the number of days on each daily pass, plus annual passes times 12 trips per pass. As such, these data are not a function of any allocation rules, and show the actual trends in overall use of the river over time. Since Segment 2 represents more than 50% of all use, we would expect the trends in Segment 2 to mirror the overall boater days, which they do.

Figures 4-7 show the estimated boater days from the INR program compared to the estimates from the original reports. In all segments, the two estimates are inconsistent for almost all the years between 1994 and 1997 when the OPRD program contained programming errors. The estimates are nearly identical for 2000-01, as would be expected since the INR program uses the same allocation logic as the KMX program. The estimates are also fairly consistent for the years 1998-99 when the BLM was using a program very similar to KMX's. In 1991 and 1993 (the only years between 1990-93 where both data and a report are available), the estimates for Segments 1 and 2 are fairly close, while the estimates for Segments 3 and 4 show some discrepancies. This implies that Eixenberger was applying similar assumptions to the current allocation system for Segments 1 and 2, but there were some differences for Segments 3 and 4.

Figure 1. Annual Boater Use By Segment

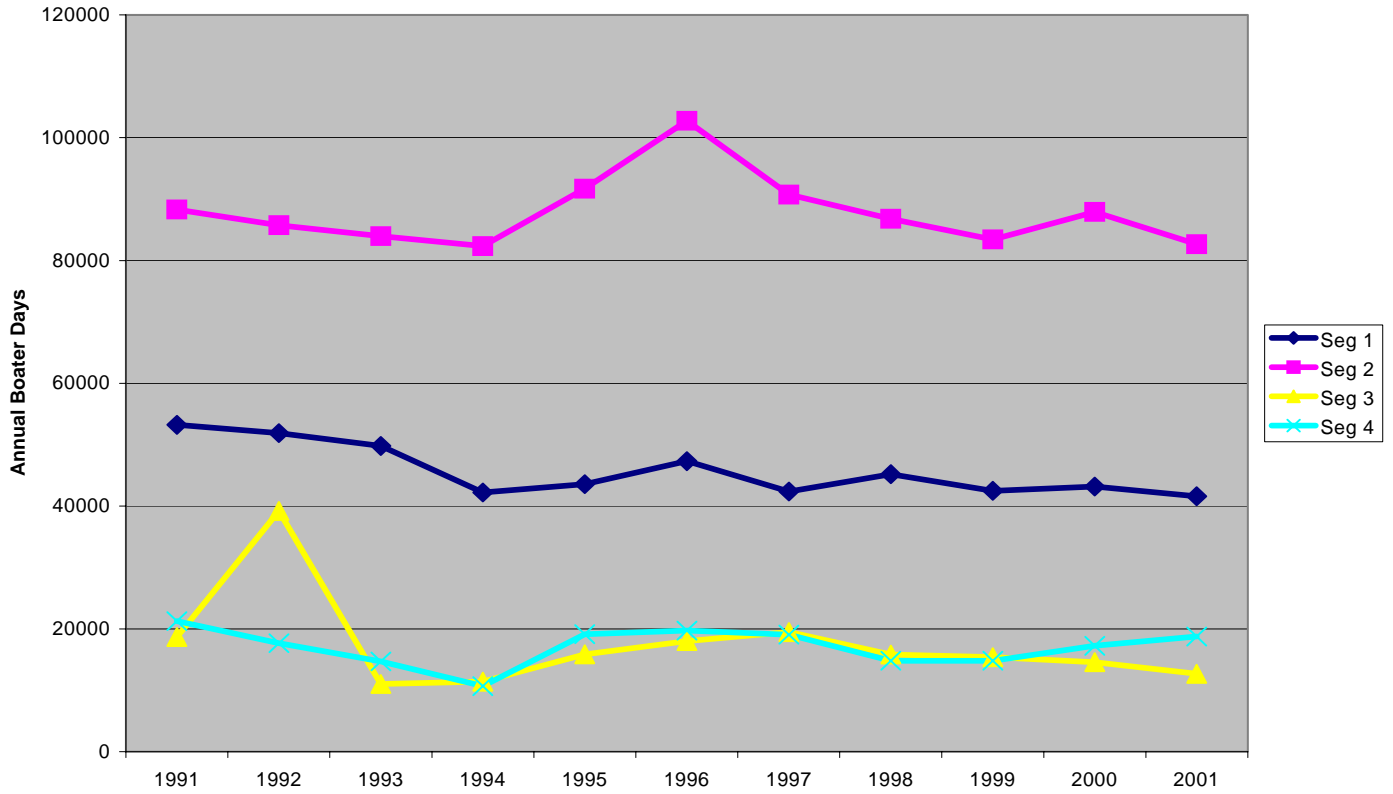


Figure 2. Peak Season Boater Use By Segment

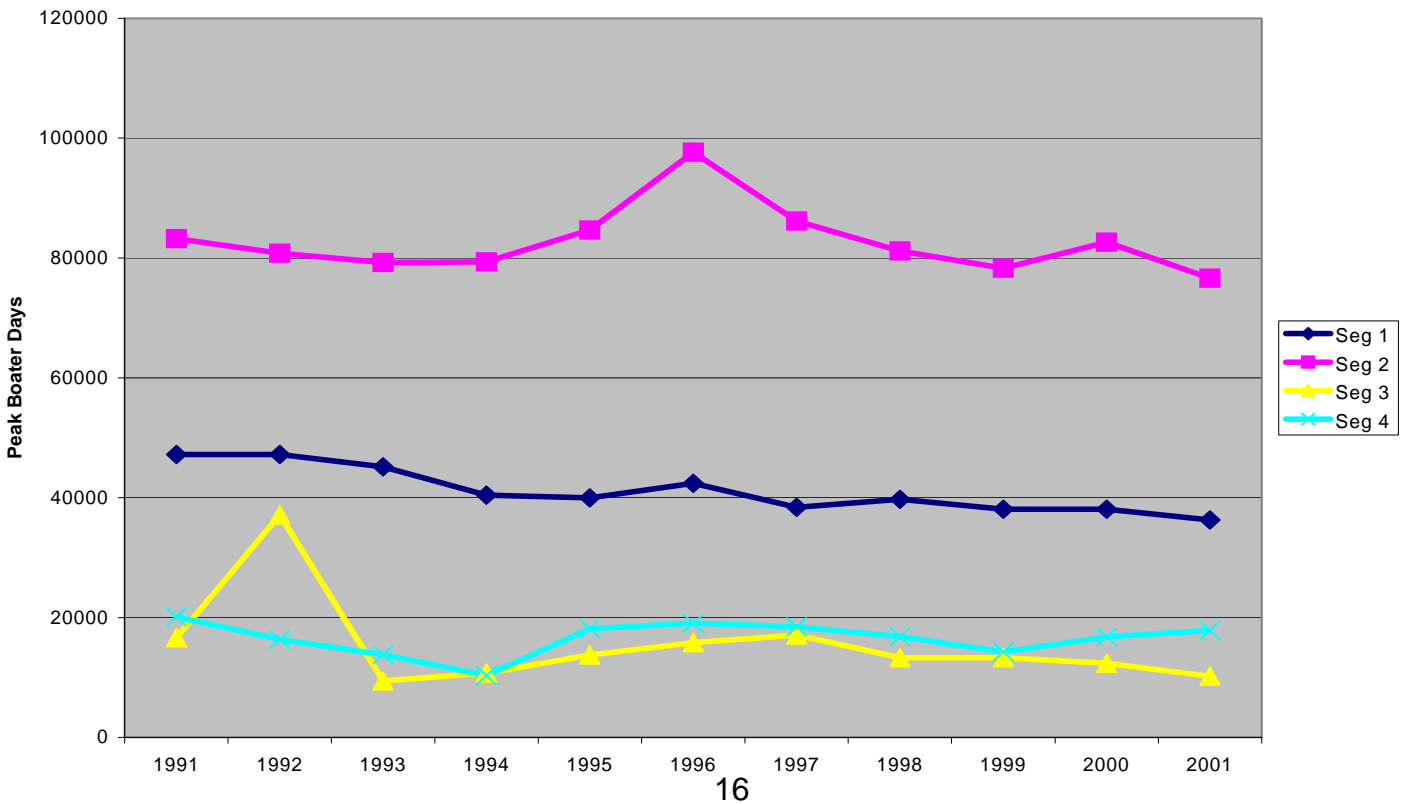


Figure 3. Segment 2 Boater Days Compared to Total River Boater Days and Passes Sold

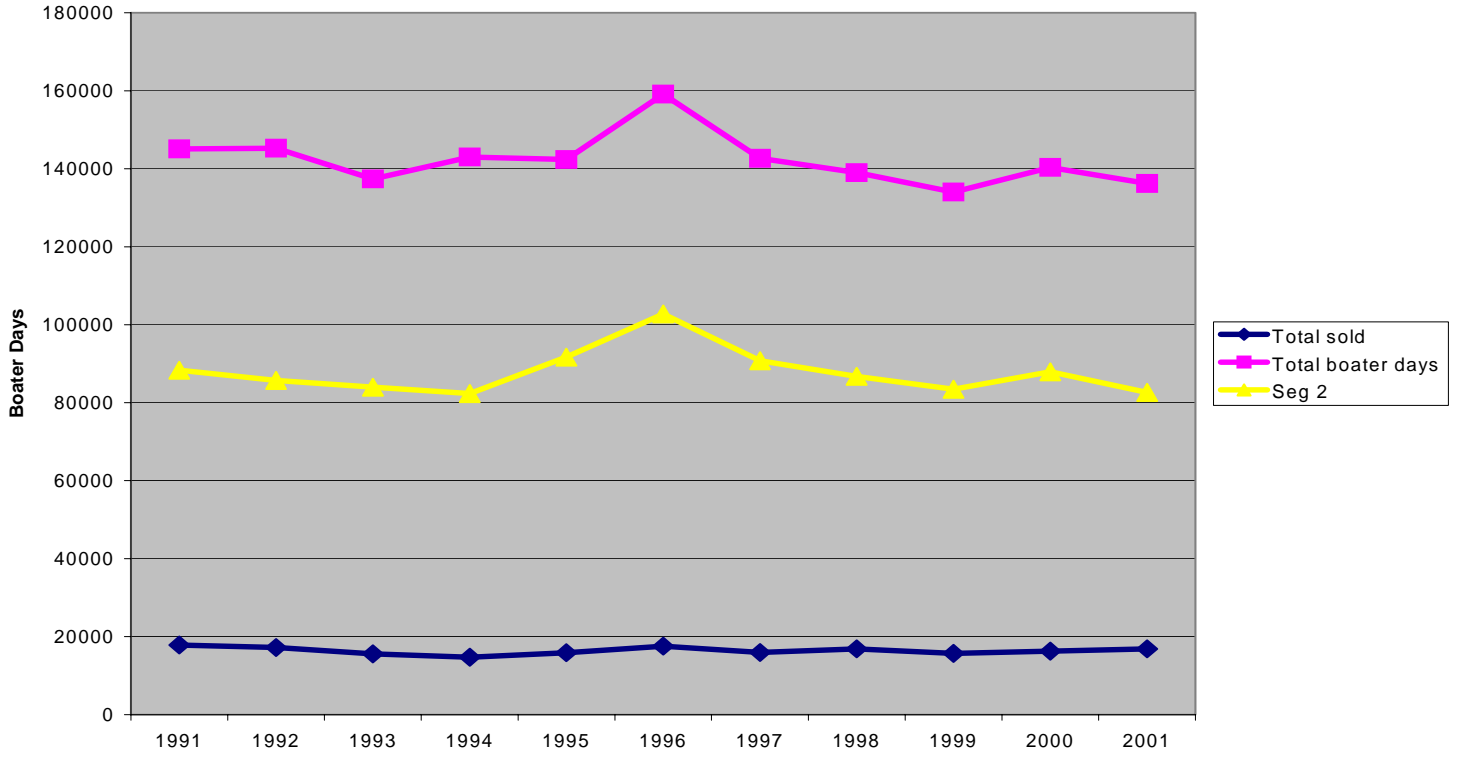


Figure 4. Segment 1 Peak Season Boater Use: Old Reports vs. New INR Program

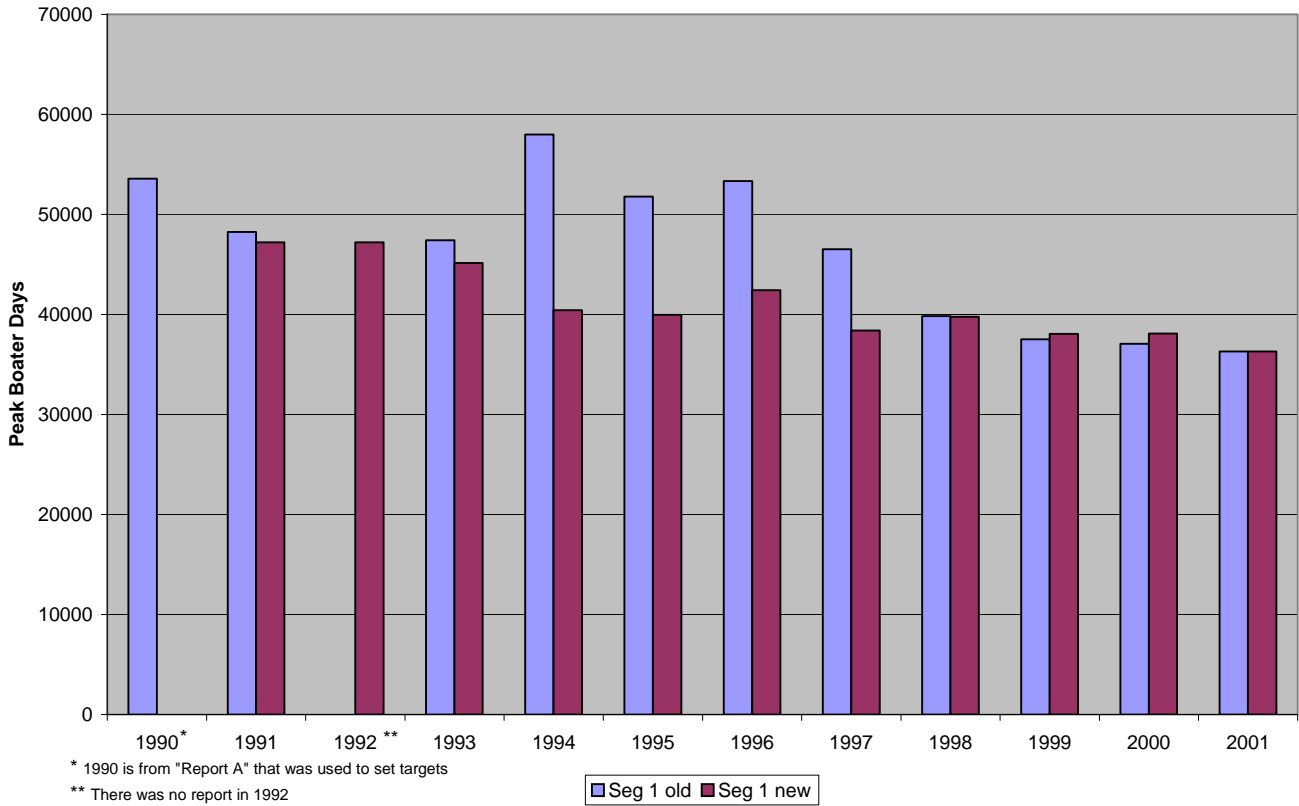


Figure 5. Segment 2 Peak Season Boater Use: Old Reports vs. New INR Program

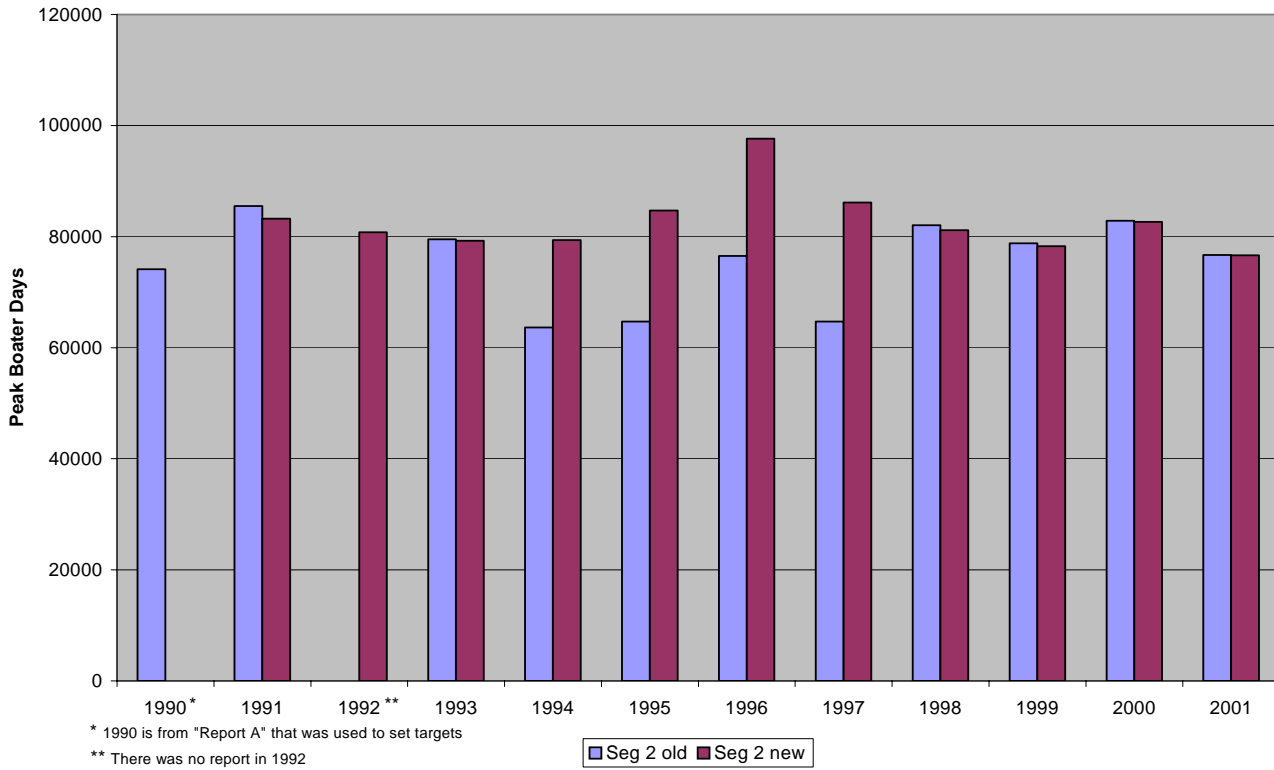


Figure 6. Segment 3 Peak Season Boater Use: Old Reports vs. New INR Program

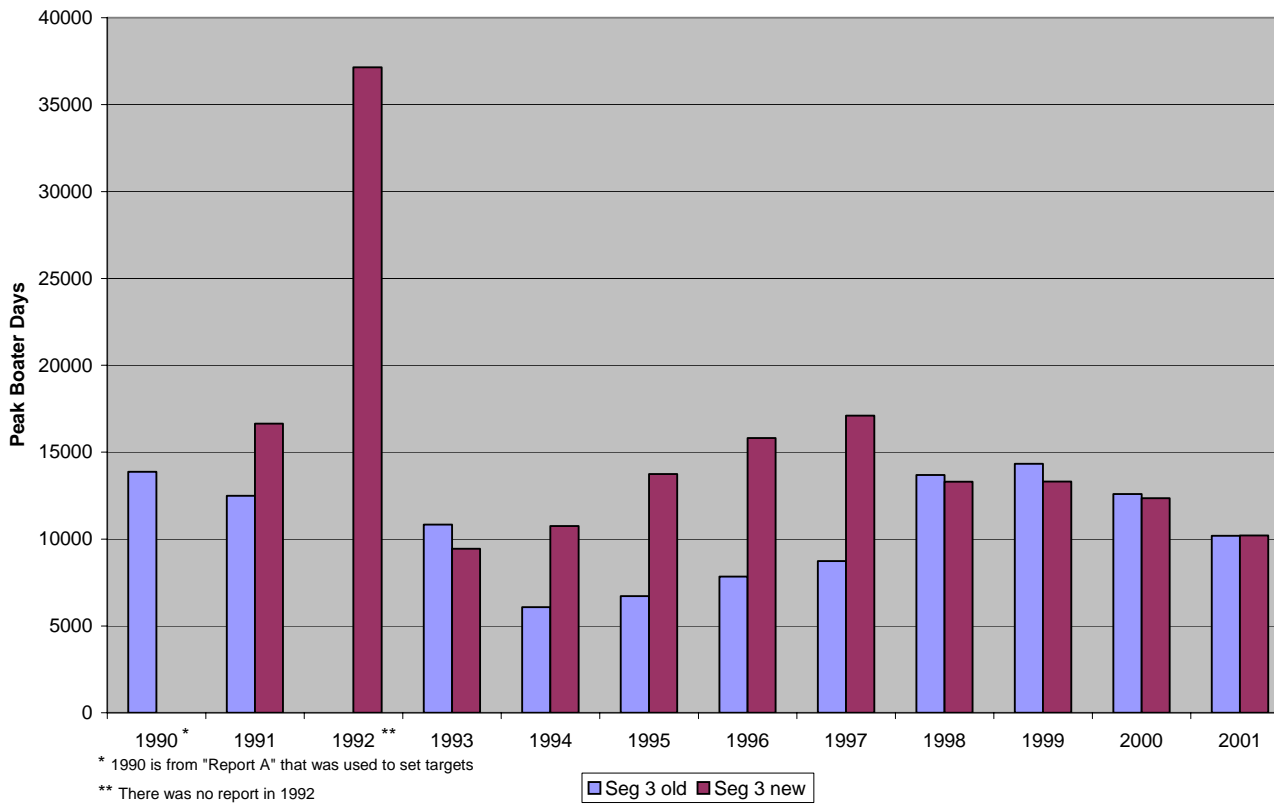
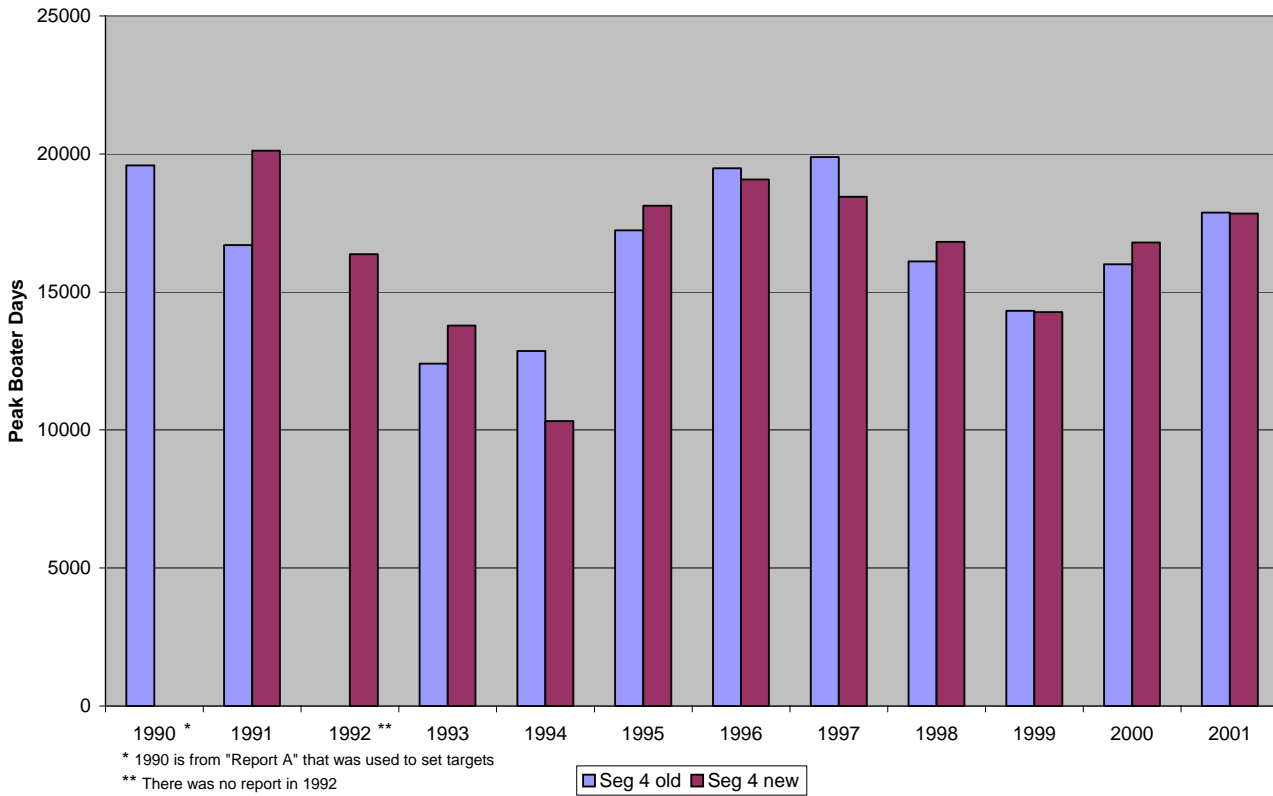


Figure 7. Segment 4 Peak Season Boater Use: Old Reports vs. New INR Program



Objective 5 – What would 1990 targets have been with new program?

Unfortunately, 1990 data are not available to run through the INR allocation program. Therefore, we can't say what the difference between the INR estimate and the original estimate would have been. If we thought that the only discrepancy between the INR program and Eixenberger's method was in the handling of bad passes, then we could use a procedure similar to what Eixenberger did when he produced Report B, i.e., use 1991 or 1993 estimates of relative use by segment to go back and reallocate the use associated with the 41% bad passes in 1990. In preparing Report B, Eixenberger used the 1991 pattern of relative use in each segment to allocate the 41% of bad passes that were included in the 1990 data. His logic was that in 1991, bad passes had been reduced from 41% to 19%, so the good data were more indicative of actual use on the river. The good passes in 1991 showed relatively more use in Segment 2 compared to the other three segments, so Eixenberger concluded that more Segment 2 users had trouble filling out the passes in 1990 than other Segment

users. When he allocated the 41% bad passes from 1990 according to the 1991 relative distribution of use, the following changes were made to 1990 segment estimates:

- Segment 1 use went down by 12%
- Segment 2 use went up by 10%
- Segment 3 use went down by 14%
- Segment 4 use went down by 18%
-

Using this logic, targets for each segment would go up or down by the amount shown above. Even though these “improved” estimates were available in 1992, they were not used to determine the targets in the plan.

Using the logic described above requires an assumption that the good passes were allocated according to the current allocation system. Unfortunately, Figures 6 and 7 indicate that there are additional differences between Eixenberger’s methods and the INR program for Segments 3 and 4. Therefore, it is unlikely that the 1990 report represents the same allocation of use in Segments 3 and 4 that would be estimated using current allocation methods, even for the good passes in 1990.

An alternative solution is to use the 1993 data as the best representation of 1990 data, since passes sold and total boater days are similar between the two years:

	1990	1993	% difference
Passes sold:	16,537	15,599	5.88
Boater days:	138,447	137,353	0.81

If we assume that 1993 is the best estimate we have of 1990 use, then we would conclude that, compared to the reported use:

- Segment 1 use was actually 16% lower
- Segment 2 use was actually 7% higher
- Segment 3 use was actually 32% lower
- Segment 4 use was actually 34% lower

The daily targets in the management plan would then be adjusted as follows:

Segment 1a Peak Season Daily Target:	185
Segment 1b Peak Season Daily Target	277
Segment 2 Peak Season Daily Target:	1,819
Segment 3 Peak Season Daily Target:	170
Segment 4 Peak Season Daily Target:	215

The seasonal targets in the management plan would be adjusted as follows:

Segment 1a Peak Seasonal Target:	17,967
Segment 1b Peak Seasonal Target	27,048
Segment 2 Peak Seasonal Target:	79,287
Segment 3 Peak Seasonal Target:	9,452
Segment 4 Peak Seasonal Target:	12,936

Objective 6 – Explain the “margin of error” in the analysis

As noted in the methods section, “margin of error” in the strict statistical sense is not applicable to this analysis. It is possible, however, to discuss where errors or biases may be present in the analysis. For every year, it is possible, even likely, that there are data entry errors. Data entry errors are likely to be small overall, and the programs since 1994, at least (we don’t know what the program from 1990-93 looked like), had checks built into the data entry system to minimize those errors.

Errors in the programs have already been discussed. Those errors resulted in segment use estimates that were as much as 23% from the correct estimates. The INR program corrects those errors.

Since 1993, there have been relatively few bad passes, so there should be little error contributed by those passes. Before 1993, the bad passes were as high as 41% of the total, and could result in more error when they get allocated back into the segment distribution. Unfortunately, there is no information to indicate the magnitude or direction of that error.

The INR program can be checked for accuracy with the current KMX program, since both programs were run on the same set of data in 2001. When the differences between the two programs for any day during 2001 are added up, the sum of all differences amounted to 0.31% of total boater days, leading to the conclusion that the INR program accurately represents the current allocation system being used.

Given that data entry errors are likely to be small and that the INR program accurately reflects the current allocation system, the estimates of use over time that were produced by the INR program are as accurate as possible.

CONCLUSIONS

The overall goal of this project was to identify and explain the reasons for the boater use level discrepancies recorded by BLM and OPRD. A number of factors have been presented to explain those discrepancies, including changes in methodology over time and programming errors. In order to produce a consistent time series of Deschutes boater use since 1991, the INR program was applied to original data sets for each year. These results incorporate the current allocation program used by the BLM (KMX), and represent the Eixenberger assumptions, as understood by current managers.

Due to missing data and programs from 1990, it is impossible to create a consistent report for that year using the current program. Similar boater numbers for 1990 and 1993, along with a very low rate of bad passes in 1993, suggest that one alternative for representing 1990 boater use would be to use 1993 data. This would result in an adjustment of plan targets for each segment. The targets for Segment 2 would go up, while targets for all other segments would go down.

New boater pass reports are provided in the Appendix that show daily boater use by segment for 1991-2001. Managers will now need to decide how to incorporate that information, along with the suggested adjustments for target levels, into their planning and management process.

APPENDIX A. Eixenberger memos.

Insert 10/20/1989 memo here.

APPENDIX A. Eixenberger memos con't.

Insert 11/16/1994 memo here

APPENDIX A. Eixenberger memos con't.

Insert 12/08/1994 memo here

APPENDIX B. Deschutes River Boater Pass - 1992

APPENDIX B. Deschutes River Boater Pass - 1993

APPENDIX B. Deschutes River Boater Pass - 1994

APPENDIX B. Deschutes River Boater Pass - 1995

APPENDIX B. Deschutes River Boater Pass - 1996

APPENDIX B. Deschutes River Boater Pass - 1997

APPENDIX B. Deschutes River Boater Pass - 1998

APPENDIX B. Deschutes River Boater Pass – 1999

APPENDIX B. Deschutes River Boater Pass – 2000

APPENDIX C. OPRD (Brutscher) memo 8/15/2000

APPENDIX D. Daily Use by Segment 1991-2001

January, 1991					February, 1991									
	Segment						Segment							
	1	2	3	4			1	2	3	4				
day	0	0	0	0		day	0	0	0	0				
1						1								
2	0	0	0	0		2	4	3	0	0				
3	0	0	0	0		3	7	3	0	0				
4	0	0	0	0		4	0	0	0	0				
5	0	0	0	0		5	0	0	0	0				
6	0	0	0	0		6	0	0	0	0				
7	0	0	0	0		7	0	0	0	0				
8	0	0	0	0		8	0	0	0	0				
9	0	0	0	0		9	4	0	9	12				
10	0	0	0	0		10	9	0	0	9				
11	0	0	0	0		11	6	0	0	0				
12	0	0	0	0		12	3	1	0	0				
13	1	0	0	0		13	0	0	0	0				
14	0	0	0	0		14	0	0	0	0				
15	0	0	0	0		15	0	0	0	0				
16	0	0	0	0		16	34	0	0	0				
17	0	0	0	0		17	30	16	1	0				
18	0	0	0	0		18	9	0	3	1				
19	4	0	0	0		19	0	0	0	0				
20	1	0	0	0		20	0	0	0	0				
21	0	0	0	0		21	1	0	0	0				
22	1	0	0	3		22	3	0	0	0				
23	0	0	0	0		23	9	4	0	0				
24	0	0	0	0		24	13	1	0	0				
25	0	0	0	0		25	4	4	0	0				
26	6	3	0	0		26	3	0	0	0				
27	0	3	0	0		27	6	0	0	0				
28	0	0	0	0		28	1	0	0	0				
29	1	0	0	0		All	14	32	13	22				
							6							
30	0	0	0	0										
31	0	0	0	0										
All	14	6	0	3										

March, 1991					April, 1991				
Segment					Segment				
	1	2	3	4		1	2	3	4
day	1	0	0	0	day	13	0	0	0
1					1				
2	31	13	0	0	2	15	6	0	0
3	9	13	0	0	3	0	0	0	0
4	0	0	0	0	4	4	0	0	0
5	0	0	0	0	5	10	0	0	0
6	6	0	0	0	6	13	16	0	0
7	0	0	0	0	7	10	9	0	0
8	12	0	0	0	8	0	0	0	0
9	37	12	3	0	9	0	1	0	0
10	37	28	0	3	10	3	0	1	1
11	0	4	0	0	11	7	0	0	1
12	0	4	0	0	12	6	0	0	0
13	0	0	0	0	13	58	7	0	0
14	4	3	0	0	14	37	37	3	1
15	9	7	0	0	15	27	0	0	1
16	7	0	0	0	16	22	1	0	0
17	10	0	4	0	17	27	3	0	0
18	1	0	0	0	18	31	24	0	0
19	7	7	0	0	19	33	4	0	0
20	0	0	0	0	20	64	22	0	10
21	1	0	0	0	21	61	27	3	7
22	3	0	0	0	22	10	3	0	3
23	3	6	3	0	23	10	0	0	0
24	10	0	3	6	24	37	13	9	0
25	1	0	0	0	25	9	0	0	9
26	3	0	0	0	26	25	30	19	0
27	7	1	0	1	27	66	58	7	25
28	0	0	0	0	28	33	39	27	24
29	3	0	0	0	29	0	3	0	0
30	18	40	0	0	30	3	0	0	0
31	10	19	0	1	All	63	303	69	82
All	229	157	13	11		4			

May, 1991					June, 1991				
	Segment					Segment			
	1	2	3	4		1	2	3	4
day	31	6	0	6	day	380	239	90	45
1					1				
2	33	3	6	0	2	365	304	22	27
3	33	9	66	54	3	213	141	4	4
4	63	106	28	21	4	196	115	15	4
5	45	72	16	1	5	157	48	18	19
6	34	48	0	1	6	230	82	7	10
7	10	7	0	0	7	365	82	21	19
8	9	13	0	0	8	506	377	117	40
9	15	7	4	0	9	386	403	124	39
10	73	7	36	9	10	236	112	33	63
11	99	141	43	13	11	225	88	21	40
12	54	69	4	10	12	239	55	9	16
13	30	1	1	0	13	241	102	60	28
14	39	28	0	0	14	383	163	76	93
15	54	58	4	0	15	516	840	85	78
16	81	55	6	9	16	428	491	245	51
17	157	25	9	9	17	217	133	90	82
18	225	160	42	9	18	147	421	88	100
19	195	195	16	9	19	133	183	55	114
20	46	18	48	0	20	14	82	30	12

							1			4				
21	34	18	15	15		21	33 5	99	43	10 9				
22	61	40	0	3		22	50 7	880	139	10 8				
23	123	13	19	15		23	42 2	651	15	15 1				
24	157	90	3	16		24	28 9	106	31	13				
25	332	524	93	87		25	26 6	156	115	13				
26	340	331	90	109		26	12 3	141	55	87				
27	244	340	46	75		27	19 0	280	117	70				
28	121	43	1	4		28	23 2	259	34	82				
29	111	58	1	4		29	39 2	106 6	70	99				
30	178	39	13	6		30	34 3	858	60	21				
31	262	70	19	24		All	##	895 7	188 9	##				
Al l	###	###	629	509										

July, 1991	August, 1991
-----------------------	-------------------------

	Segmen t					Segmen t			
	1	2	3	4		1	2	3	4
da y	133	174	24	10	da y	48 2	528	75	91
1					1				
2	87	214	40	25	2	66 5	792	210	14 8
3	172	162	34	42	3	##	276 4	400	31 4
4	650	621	48	72	4	11 31	241 3	259	27 2
5	877	736	141	67	5	43 1	527	102	64
6	931	189 0	383	97	6	29 6	513	99	84

7	597	144 7	235	162		7	28 7	765	208	10 2				
8	275	404	63	25		8	37 6	621	142	17 8				
9	226	168	21	58		9	68 4	112 9	317	15 6				
10	250	219	85	61		10	##	308 9	639	34 6				
11	253	217	33	42		11	##	260 3	385	56 0				
12	367	612	169	82		12	28 0	582	127	13 9				
13	807	221 8	464	181		13	13 3	521	82	13 9				
14	759	193 2	251	232		14	24 4	548	172	18 6				
15	307	395	105	105		15	29 8	813	199	19 8				
16	242	271	61	55		16	41 3	107 6	518	29 6				
17	278	266	49	61		17	##	298 6	750	56 1				
18	323	492	141	33		18	##	266 7	268	47 0				
19	497	702	207	106		19	42 7	451	124	12 3				
20	965	###	430	166		20	35 6	557	91	15 7				
21	679	###	504	296		21	41 2	494	153	17 8				
22	319	316	21	106		22	43 3	587	169	16 6				
23	335	389	69	52		23	52 5	666	278	25 9				
24	239	427	58	97		24	##	294 8	533	35 2				
25	290	307	58	93		25	73 6	215 8	319	47 3				
26	467	786	208	121		26	32 3	545	160	15 7				
27	125 6	###	329	205		27	18 9	299	129	14 8				
28	106 7	###	187	230		28	13 9	434	45	12 7				
29	419	554	105	90		29	14	456	259	12				

							1			0										
30	350	480	55	109			30	20 8	480	274	25 1									
31	415	497	184	75			31	78 9	207 3	388	38 8									
All	###	###	###	315 6			All	##	###	787 4	##									
September, 1991						October, 1991														
	Segment						Segment													
	1	2	3	4			1	2	3	4										
day	811	###	332	442		day	63	31	36	94										
1						1														
2	313	952	230	340		2	33	16	1	69										
3	105	136	69	88		3	55	16	27	70										
4	85	97	30	133		4	58	63	31	60										
5	100	91	34	141		5	14 2	222	117	16 3										
6	150	204	108	184		6	15 4	148	82	19 2										
7	480	148 9	236	311		7	91	15	13	11 1										
8	347	813	121	331		8	93	21	16	73										
9	106	78	49	162		9	87	19	18	60										
10	106	60	45	195		10	70	46	21	66										
11	90	52	37	216		11	73	31	30	10 9										
12	108	136	36	186		12	13 2	31	25	11 5										
13	153	205	88	242		13	19 2	109	40	12 0										
14	325	867	184	343		14	73	43	49	66										
15	304	741	78	364		15	99	37	21	43										
16	132	112	55	190		16	63	22	22	72										
17	124	82	60	217		17	37	31	21	78										
18	111	72	40	169		18	63	13	9	73										
19	90	76	28	132		19	13 3	40	46	78										
20	100	106	54	187		20	10 6	66	30	10 2										
21	254	919	205	225		21	52	16	6	18										

22	207	456	99	304		22	36	4	7	13				
23	112	82	69	153		23	27	0	0	13				
24	69	21	27	135		24	15	7	4	16				
25	123	58	37	117		25	24	10	10	30				
26	109	72	22	168		26	33	6	16	18				
27	115	72	36	162		27	30	6	6	31				
28	235	419	63	124		28	16	0	25	31				
29	153	260	58	169		29	9	4	1	25				
30	72	42	19	82		30	3	0	4	16				
Al	###	###	###	621		31	4	7	7	6				
l				2										
						All	##	108	741	##				
								0						

November, 1991					December, 1991				
	Segment					Segment			
	1	2	3	4		1	2	3	4
day 1	7	3	6	12	day 1	9	12	6	3
2	18	3	3	15	2	0	0	0	6
3	15	0	6	12	3	0	0	0	0
4	6	0	0	6	4	0	0	0	0
5	16	3	0	0	5	0	4	0	0
6	12	0	0	0	6	0	0	0	0
7	19	6	6	7	7	6	0	3	0
8	7	10	9	7	8	18	7	0	4
9	12	12	12	6	9	0	0	0	0
10	25	1	3	22	10	0	0	0	0
11	3	1	3	3	11	0	0	0	0
12	3	3	1	1	12	0	0	0	1
13	1	0	1	6	13	0	0	0	0
14	4	1	4	3	14	0	0	0	0
15	4	0	3	3	15	4	0	0	6
16	10	4	12	15	16	0	0	0	1
17	15	3	0	7	17	0	0	0	0
18	4	4	3	0	18	0	0	0	0
19	1	0	0	0	19	0	0	0	0
20	3	0	0	10	20	0	0	0	6
21	4	3	0	22	21	4	0	0	0
22	0	9	4	9	22	4	4	0	4

23	15	3	0	7	23	6	0	0	7				
24	3	0	0	7	24	0	0	0	0				
25	3	3	1	7	25	3	0	0	0				
26	0	0	0	4	26	7	3	3	3				
27	0	1	1	4	27	9	0	0	9				
28	4	0	0	1	28	12	3	3	4				
29	10	0	3	3	29	6	0	9	16				
30	12	1	0	3	30	6	0	0	3				
Al l	236	74	81	202	31	4	4	0	0				
					All	98	37	24	73				

January, 1992					February, 1992								
	Segmen t					Segmen t							
	1	2	3	4		1	2	3	4				
da y	0	0	0	0	da y	0	0	5	5				
1					1								
2	0	0	0	0	2	0	8	5	0				
3	0	0	0	0	3	0	0	3	0				
4	0	0	0	0	4	0	0	0	0				
5	9	0	3	3	5	0	0	0	0				
6	0	0	0	0	6	0	0	3	0				
7	0	0	0	0	7	0	0	0	0				
8	0	0	0	0	8	3	3	0	6				
9	0	0	0	0	9	0	2	2	0				
10	0	0	0	0	10	0	0	0	0				
11	0	0	0	0	11	0	0	0	0				
12	5	5	0	0	12	0	0	0	0				
13	0	0	0	0	13	0	0	0	0				
14	0	0	0	0	14	0	3	0	3				
15	0	0	0	0	15	0	5	0	0				
16	0	0	0	0	16	0	12	2	0				
17	0	0	0	0	17	0	3	9	9				
18	0	0	5	2	18	0	0	0	0				
19	0	0	0	0	19	0	0	0	0				
20	0	0	0	0	20	0	0	0	0				
21	0	0	0	0	21	0	2	0	3				
22	0	0	0	0	22	0	6	9	9				
23	0	2	0	0	23	2	3	0	9				
24	0	0	0	0	24	0	2	5	3				

25	0	8	0	0	25	0	0	0	0						
26	0	0	6	6	26	0	3	0	0						
27	0	0	0	0	27	0	0	0	0						
28	0	0	0	0	28	2	6	0	0						
29	0	0	0	0	29	12	9	5	0						
30	0	0	0	0	All	19	67	48	47						
31	2	2	0	0											
All	16	17	14	11											
March, 1992					April, 1992										
	Segment					Segment									
	1	2	3	4		1	2	3	4						
day	12	11	2	3	day	0	6	0	0						
1					1										
2	8	8	0	0	2	2	2	0	0						
3	0	0	0	0	3	5	0	34	30						
4	0	0	0	0	4	16	5	11	33						
5	0	5	3	0	5	11	23	23	45						
6	0	0	0	3	6	0	0	0	0						
7	28	3	3	0	7	0	0	2	0						
8	30	25	0	3	8	0	0	0	8						
9	8	2	0	0	9	0	0	0	0						
10	0	3	2	0	10	3	5	0	0						
11	0	2	0	2	11	9	33	5	0						
12	3	0	0	0	12	5	11	0	5						
13	5	5	2	0	13	9	3	0	0						
14	5	8	3	5	14	3	9	0	0						
15	0	0	3	3	15	0	0	2	0						
16	0	0	0	0	16	22	6	8	0						
17	0	0	0	0	17	20	9	5	0						
18	0	0	0	0	18	28	42	19	5						
19	0	0	0	0	19	33	25	0	6						
20	14	0	0	0	20	22	20	0	5						
21	23	17	6	5	21	2	2	0	0						
22	50	11	9	11	22	0	12	11	0						
23	47	9	6	3	23	8	0	6	6						
24	11	2	2	8	24	61	23	14	6						
25	8	8	3	2	25	11	47	12	12						
						7									

26	0	6	3	0	26	10 9	84	17	23				
27	0	8	0	0	27	5	16	5	11				
28	8	81	37	5	28	28	3	0	16				
29	8	44	0	11	29	28	9	0	0				
30	3	3	0	6	30	26	14	2	3				
31	0	0	0	5	All	57 2	409	176	21 4				
Al l	271	261	84	75									

May, 1992		June, 1992											
----------------------	--	-----------------------	--	--	--	--	--	--	--	--	--	--	--

	Segmen t					Segmen t							
	1	2	3	4		1	2	3	4				
da y 1	26	5	14	14	da y 1	22 4	78	40	36				
2	86	148	90	22	2	20 7	168	31	39				
3	79	78	23	20	3	17 1	120	23	61				
4	56	45	8	8	4	23 3	208	99	33				
5	11	9	0	0	5	34 7	215	113	72				
6	11	26	0	0	6	41 0	706	197	54				
7	6	22	19	3	7	23 9	493	187	31				
8	67	17	11	3	8	21 0	98	47	12				
9	124	272	82	20	9	23 2	146	51	11				
10	103	230	20	8	10	17 4	61	30	23				
11	28	53	89	0	11	22 2	257	51	56				
12	36	16	12	0	12	39 0	215	145	76				
13	54	28	3	0	13	51 6	774	302	11 2				
14	163	56	19	6	14	49	476	468	89				

							9								
15	238	124	20	16		15	308	196	145	62					
16	345	488	225	19		16	219	471	87	64					
17	249	508	219	75		17	188	218	106	101					
18	110	53	14	8		18	211	606	187	106					
19	101	25	9	0		19	320	429	218	99					
20	131	143	22	3		20	431	1155	958	159					
21	117	140	79	12		21	384	746	322	182					
22	211	96	68	39		22	292	166	58	25					
23	805	990	504	180		23	376	201	101	20					
24	735	1121	656	246		24	340	387	168	5					
25	477	689	274	219		25	317	286	166	25					
26	98	34	22	62		26	448	485	180	8					
27	141	143	5	61		27	712	1379	766	86					
28	227	103	16	39		28	552	1222	485	180					
29	347	171	20	42		29	241	193	127	36					
30	456	491	208	17		30	213	165	59	8					
31	460	449	165	20		All	##	###	5917	##					
All	###	###	2916	1162											
July, 1992					August, 1992										
	Segment					Segment									
	1	2	3	4		1	2	3	4						
da	185	243	140	16	da	##	271	114	14						

y					y		3	7	9				
1					1								
2	146	367	90	62	2	87	216	101	20				
						1	4	4	4				
3	476	752	426	81	3	47	451	187	72				
						6							
4	476	766	549	93	4	30	578	197	62				
						2							
5	337	661	361	96	5	39	572	311	98				
						0							
6	196	358	33	14	6	48	622	297	19				
						5			7				
7	149	358	68	14	7	59	557	305	19				
						2			6				
8	160	488	266	11	8	##	198	102	23				
							5	8	2				
9	232	428	246	28	9	##	190	878	33				
							3		3				
10	482	644	286	72	10	42	323	149	13				
						8			5				
11	892	###	930	59	11	27	734	358	12				
						4			7				
12	715	167	718	134	12	28	723	213	10				
		3				9			9				
13	334	406	183	37	13	39	642	221	98				
						5							
14	233	350	169	48	14	44	967	496	15				
						5			4				
15	215	424	113	86	15	95	264	112	30				
						5	8	6	8				
16	322	560	303	86	16	77	214	121	37				
						9	7	6	0				
17	479	843	395	113	17	48	550	163	12				
						2			9				
18	113	###	120	129	18	31	446	135	12				
	8		6			4			0				
19	869	189	105	146	19	34	494	229	17				
		2	6			8			1				
20	359	344	148	39	20	31	508	294	15				
						4			1				
21	309	400	208	42	21	50	108	524	17				
						4	5		4				
22	250	460	202	36	22	98	238	853	31				
						3	6		4				
23	317	266	68	37	23	67	146	483	22				

						2	3		7				
24	549	533	294	137		24	27 8	331	115	79			
25	111 6	###	110 7	213		25	21 6	365	197	75			
26	877	201 8	102 3	199		26	12 6	244	110	11 7			
27	438	471	205	110		27	13 4	267	134	14 1			
28	320	376	218	98		28	16 6	763	225	18 7			
29	362	622	387	129		29	56 6	210 3	869	19 6			
30	390	647	294	126		30	35 0	128 9	602	28 8			
31	679	586	252	154		31	92	140	50	89			
All	###	###	###	###		All	##	###	141	##			
									26				
September, 1992					October, 1992								
Segment					Segment								
	1	2	3	4		1	2	3	4				
day	53	145	99	76		day	36	34	9	73			
1						1							
2	45	193	22	98		2	50	39	20	68			
3	51	171	104	121		3	82	126	33	78			
4	124	249	138	160		4	82	115	28	93			
5	544	126 2	670	249		5	95	23	19	89			
6	465	105 7	619	336		6	68	2	11	86			
7	280	639	230	297		7	67	8	14	44			
8	75	53	25	73		8	56	37	23	68			
9	59	72	11	103		9	92	16	30	90			
10	54	70	68	159		10	13 2	37	23	10 1			
11	126	180	98	177		11	10 6	93	20	76			
12	294	770	378	274		12	54	22	11	44			
13	230	630	129	225		13	45	26	34	26			

14	53	36	11	96	14	20	3	11	47					
15	68	40	26	87	15	26	5	23	47					
16	22	14	31	75	16	48	16	30	51					
17	73	47	31	103	17	54	61	42	72					
18	124	247	64	187	18	61	53	22	68					
19	106	658	277	294	19	48	11	12	47					
20	84	423	48	291	20	58	17	12	20					
21	53	14	28	103	21	56	25	26	23					
22	59	40	25	124	22	33	17	8	36					
23	96	11	20	90	23	45	11	26	34					
24	82	48	45	84	24	82	11	11	45					
25	72	26	22	137	25	67	50	23	48					
26	86	367	58	93	26	40	19	17	28					
27	75	188	26	124	27	42	9	5	22					
28	64	36	12	89	28	39	3	5	30					
29	31	20	5	82	29	37	12	6	8					
30	26	47	12	61	30	31	23	23	42					
All	###	###	###	###	31	22	6	8	28					
					All	##	930	585	##					

November, 1992					December, 1992				
Segment					Segment				
	1	2	3	4		1	2	3	4
day	9	0	6	20	day	0	0	0	0
1					1				
2	0	0	3	3	2	0	0	0	0
3	5	0	0	2	3	0	0	0	9
4	5	0	0	2	4	2	0	0	6
5	3	3	0	9	5	3	3	0	2
6	3	8	5	0	6	0	0	0	0
7	5	0	0	12	7	0	0	0	0
8	6	8	0	8	8	0	0	0	0
9	5	8	0	6	9	0	0	0	9
10	8	0	0	3	10	0	0	0	0
11	6	0	0	3	11	0	0	0	0
12	5	0	0	0	12	2	3	0	0
13	5	0	0	16	13	5	0	0	0
14	9	0	6	31	14	0	0	0	2
15	11	26	11	37	15	2	0	0	2

16	0	0	6	19	16	0	0	0	3				
17	0	0	0	0	17	0	0	0	0				
18	2	0	0	2	18	0	0	0	0				
19	8	0	0	2	19	5	0	5	5				
20	6	0	0	0	20	3	3	0	5				
21	0	0	0	0	21	3	0	0	0				
22	3	0	0	0	22	0	0	0	0				
23	2	5	0	0	23	2	0	0	0				
24	0	0	5	0	24	6	0	0+J 490	0				
25	0	2	0	0	25	0	3	3	0				
26	0	2	2	0	26	3	3	3	3				
27	3	14	3	2	27	5	0	3	6				
28	3	2	6	3	28	0	0	0	0				
29	2	2	6	2	29	0	0	0	3				
30	0	0	0	0	30	0	0	0	0				
All	114	80	59	182	31	3	0	0	0				
					All	44	15	14	55				

January, 1993							February, 1993							
day	Segment						day	Segment						
	1	1A	1B	2	3	4		1	1A	1B	2	3	4	
1	0	0	0	0	0	0	1	0	0		0	0	0	0
2	4	4	0	0	0	0	2	0	0	0	0	0	0	0
3	0	0	0	0	0	0	3	0	0	0	0	0	0	0
4	0	0	0	0	0	0	4	0	0	0	4	0	0	0
5	0	0	0	0	0	0	5	0	0	0	0	0	0	0
6	0	0	0	0	0	0	6	0	0	0	7	0	0	0
7	0	0	0	0	0	0	7	0	0	0	0	0	0	0
8	0	0	0	0	0	0	8	0	0	0	0	0	0	0
9	0	0	0	0	0	0	9	0	0	0	0	0	0	0
10	0	0	0	0	0	0	10	0	0	0	0	0	0	0
11	0	0	0	0	0	0	11	0	0	0	0	0	0	0
12	0	0	0	0	0	0	12	0	0	0	0	0	0	0
13	0	0	0	0	0	0	13	3	0	3	5	0	0	0
14	0	0	0	0	0	0	14	0	0	0	5	0	0	0
15	0	0	0	0	0	0	15	0	0	0	0	0	0	0
16	0	0	0	0	0	0	16	0	0	0	0	0	0	0

17	0	0	0	0	0	0		17	0	0	0	0	0	0
18	0	0	0	0	0	0		18	0	0	0	0	0	0
19	0	0	0	0	0	0		19	0	0	0	0	0	0
20	0	0	0	0	0	0		20	0	0	0	0	0	0
21	0	0	0	0	0	0		21	0	0	0	3	0	0
22	0	0	0	0	0	0		22	0	0	0	0	0	0
23	0	0	0	0	0	0		23	0	0	0	0	0	0
24	0	0	0	5	0	0		24	0	0	0	0	0	0
25	0	0	0	0	0	0		25	0	0	0	0	0	0
26	0	0	0	0	0	0		26	0	0	0	0	0	0
27	0	0	0	0	0	0		27	0	0	0	3	5	0
28	0	0	0	0	0	0		28	0	0	0	0	0	0
29	0	0	0	0	0	0		All	3	0	3	27	5	0
30	0	0	0	0	0	4								
31	0	0	0	4	0	0								
All	4	4	0	9	0	4								

March
, 1993

April,
1993

	Segment							Segment						
	1	1A	1B	2	3	4		1	1A	1B	2	3	4	
day	3	3	3	5	0	0	day	15	0					
1							1			15	0	0	0	
2	3	0	3	8	0	0	2	15	0	15	4	0	0	
3	0	0	0	0	0	0	3	19	4	19	91	20	3	
4	0	0	0	1	0	0	4	4	0	4	45	16	3	
5	0	0	0	0	1	0	5	4	0	4	11	0	0	
6	0	0	0	1	1	0	6	0	0	0	0	4	0	
7	0	0	0	9	1	0	7	0	0	0	0	0	0	
8	0	0	0	0	1	0	8	0	0	0	0	0	0	
9	0	0	0	7	0	0	9	0	0	0	0	0	0	
10	0	0	0	0	0	0	10	0	0	0	26	0	0	
11	0	0	0	4	0	0	11	1	1	1	11	0	0	
12	0	0	0	0	0	0	12	1	0	1	5	0	0	
13	32	32	32	7	0	0	13	0	0	0	0	0	0	
14	32	0	32	38	0	0	14	0	0	0	0	0	0	
15	0	0	0	7	0	0	15	0	0	0	0	0	0	
16	0	0	0	0	0	0	16	7	7	7	0	0	0	
17	0	0	0	0	0	0	17	34	28	34	11	0	1	
18	0	0	0	0	0	0	18	34	0	34	45	11	0	

19	0	0	0	9	0	0		19	0	0	0	0	4	7
20	13	13	13	1	0	0		20	0	0	0	0	0	0
21	13	0	13	12	0	0		21	0	0	0	0	0	0
22	3	0	3	3	0	0		22	4	4	0	3	0	0
23	3	3	3	0	0	0		23	13	13	9	12	5	0
24	12	9	12	3	0	0		24	30	21	11	60	23	20
25	9	0	9	9	0	0		25	32	17	15	34	0	21
26	4	4	4	7	0	4		26	9	4	8	12	0	0
27	8	4	8	13	8	8		27	34	30	28	5	0	0
28	19	15	19	4	0	8		28	33	11	30	0	0	0
29	15	0	15	0	0	0		29	33	3	30	3	0	0
30	15	0	15	0	0	0		30	66	38	61	5	0	0
31	15	0	15	0	0	0		All	388	18	32	383	83	55
										1	6			
Al	199	83	199	148	12	20								
l														

May, 1993		June, 1993												
------------------	--	-------------------	--	--	--	--	--	--	--	--	--	--	--	--

	Segment							Segment					
	1	1A	1B	2	3	4		1	1A	1B	2	3	4
day	124	56	87	107	7	0	day	123	65	93	58	1	13
1							1						
2	82	16	66	49	4	7	2	160	94	12	44	0	9
3	32	0	32	34	0	0	3	295	20	23	130	0	3
4	0	0	0	0	0	0	4	326	11	24	62	5	15
5	5	5	4	5	0	0	5	352	15	25	275	66	19
6	23	19	11	5	0	0	6	351	17	23	334	25	3
7	52	32	29	34	8	8	7	192	10	11	109	0	11
8	79	54	49	81	15	8	8	172	10	14	99	0	12
9	54	16	38	117	13	13	9	189	90	15	60	0	5
10	41	32	33	15	3	0	10	228	11	15	126	8	13
11	26	8	23	0	5	5	11	311	19	22	101	0	12

										3	2				
12	30	8	23	15	0	0		12	442	31	35	462	28	17	
										0	0				
13	65	42	61	36	8	1		13	399	16	36	440	38	23	
										0	1				
14	118	75	106	28	5	1		14	234	11	20	147	5	5	
										8	7				
15	176	70	130	158	23	9		15	201	90	16	281	25	25	
											2				
16	172	118	135	126	20	1		16	180	12	10	188	60	53	
										8	6				
17	83	64	105	106	7	15		17	217	15	14	150	38	65	
										6	3				
18	50	40	77	52	1	16		18	323	24	20	222	57	73	
										1	1				
19	52	28	71	28	0	21		19	478	37	37	123	34	66	
										6	3	3			
20	118	93	127	24	8	13		20	397	16	33	602	36	66	
										3	6		4		
21	211	131	196	71	7	19		21	265	14	21	283	61	34	
										0	3				
22	363	226	289	410	30	21		22	224	14	17	503	61	78	
										0	2				
23	346	123	293	444	13	19		23	183	44	16	140	13	70	
											2				
24	106	46	78	120	42	44		24	271	16	21	588	65	69	
										8	7				
25	82	36	66	70	0	49		25	361	20	32	367	30	71	
										0	0				
26	98	58	68	99	11	11		26	620	35	56	130	42	45	
										1	7	3	9		
27	179	126	130	97	3	12		27	555	12	47	969	66	38	
										8	8				
28	278	163	221	103	12	11		28	204	11	18	222	9	26	
										9	0				
29	614	417	532	959	13	12		29	211	71	17	242	62	24	
					0	2					6				
30	626	181	524	861	87	14		30	252	11	22	208	29	24	
						0				8	1				
31	477	99	416	544	15	97		All	871	##	##	###	##	98	
									6					7	
Al	###	###	###	###	47	66									
l					7	3									

July, 1993							August, 1993						
day	Segment						day	Segment					
	1	1A	1B	2	3	4		1	1A	1B	2	3	4
1	256	66	229	399	9	0	1	874	15	81	212	11	16
2	310	176	285	250	54	16	2	417	14	40	504	10	86
3	604	383	543	100	13	10	3	331	11	30	661	74	95
4	608	111	557	130	86	99	4	305	11	27	564	16	16
5	466	97	418	708	23	70	5	294	10	25	572	10	19
6	154	65	130	290	52	23	6	487	27	45	822	12	21
7	222	130	197	274	28	19	7	106	72	97	250	34	27
8	267	98	254	332	17	17	8	104	19	97	###	19	21
9	432	216	373	454	41	64	9	355	12	31	451	58	52
10	757	450	641	181	15	95	10	336	14	25	498	89	74
11	616	197	568	142	10	89	11	364	18	33	486	78	97
12	293	91	271	261	32	57	12	346	13	29	567	86	87
13	301	99	287	523	38	30	13	426	21	39	937	19	21
14	295	94	275	543	13	29	14	902	59	83	###	27	25
15	262	110	241	441	62	26	15	902	14	85	218	19	20
16	408	233	320	565	68	26	16	526	26	45	466	34	90
17	712	487	649	199	19	54	17	429	17	39	515	60	11
18	666	110	612	136	12	62	18	379	45	33	728	13	13
19	340	162	256	225	29	44	19	502	30	46	519	62	13
20	323	189	278	444	54	45	20	633	25	59	851	19	23

										3	4		7	0		
21	310	90	291	438	48	42		21	110	66	##	###	28	26		
									8	1			2	7		
22	350	128	320	723	50	61		22	895	14	85	212	17	29		
										2	4	2	9	4		
23	388	181	350	610	18	10		23	320	12	29	357	78	12		
					8	5				4	3			7		
24	661	438	597	214	17	19		24	213	69	20	481	79	12		
				1	1	2					4			0		
25	712	233	673	163	13	13		25	228	12	21	413	85	13		
				0	4	9				2	6			1		
26	410	193	405	506	49	57		26	259	99	25	663	10	10		
											3		5	7		
27	339	91	347	477	17	42		27	335	15	29	849	12	15		
										1	1		6	2		
28	279	86	306	577	23	30		28	665	47	61	193	28	23		
										4	3	8	3	0		
29	436	308	310	579	64	85		29	617	12	58	178	11	19		
										4	3	1	9	9		
30	723	434	628	777	91	13		30	127	48	13	240	34	85		
						5					0					
31	105	564	964	###	17	12		31	114	61	11	169	13	98		
	1				5	7					5					
All	###	631	###	###	##	##		All	###	##	##	###	##	##		
	0															
September, 1993							October, 1993									
	Segment								Segment							
	1	1A	1B	2	3	4		1	1A	1B	2	3	4			
day	117	29	115	187	44	98		day	78	56	56	37	74	11		
1								1						4		
2	54	29	48	138	16	94		2	119	75	69	294	74	12		
														2		
3	175	151	156	416	14	17		3	143	77	89	275	50	15		
					3	6								4		
4	568	420	500	181	19	26		4	60	32	48	20	19	74		
				0	7	9										
5	552	143	486	166	24	24		5	74	41	60	25	11	68		
				7	5	0										
6	380	91	365	900	82	20		6	56	26	42	5	19	58		
						3										

7	58	20	79	118	9	62		7	68	29	44	37	36	68
8	37	13	65	98	7	94		8	65	38	40	42	40	95
9	58	28	50	61	71	11		9	90	60	60	79	41	98
						1								
10	71	57	60	82	90	16		10	117	65	89	147	36	10
						0								2
11	167	102	148	117	53	20		11	73	12	61	68	26	62
				3		5								
12	184	53	165	862	30	18		12	28	12	24	28	16	64
						5								
13	75	26	74	53	8	10		13	25	16	9	3	16	37
						5								
14	78	21	66	56	19	15		14	32	23	13	16	24	29
						0								
15	73	23	60	71	40	10		15	40	32	11	3	8	50
						6								
16	85	42	64	73	33	13		16	79	68	38	65	15	75
						8								
17	126	86	101	181	56	14		17	64	28	44	32	25	58
						8								
18	225	155	200	538	89	21		18	69	32	41	26	23	34
						1								
19	155	21	134	454	33	17		19	36	20	16	12	17	54
						5								
20	52	21	40	49	8	13		20	24	12	15	3	15	30
						2								
21	49	33	38	13	28	97		21	32	17	16	15	15	48
22	53	26	34	42	32	98		22	33	30	9	29	15	32
23	69	34	56	68	54	73		23	49	46	24	9	5	26
24	109	66	90	122	78	13		24	65	41	36	20	8	29
						0								
25	176	102	138	224	99	18		25	28	9	21	7	4	21
						5								
26	124	12	118	302	37	13		26	28	12	16	21	1	24
						8								
27	37	11	32	40	12	93		27	13	7	7	7	7	21
28	29	17	16	3	25	89		28	32	26	16	11	9	36
29	50	36	38	52	16	74		29	42	32	11	7	7	23
30	44	16	34	24	23	62		30	33	25	8	15	12	30
Al	###	188	###	###	##	##		31	26	24	3	7	9	19
l		4												
								All	172	##	##	136	67	##
									1			5	7	

November, 1993							December, 1993						
day	Segment						day	Segment					
	1	1A	1B	2	3	4		1	1A	1B	2	3	4
1	3	3	0	3	0	4	1	0	0				
2	3	3	0	8	0	4	2	5	5	0	0	0	1
3	5	5	0	0	8	4	3	0	0	0	0	0	0
4	8	8	5	0	8	29	4	3	3	0	3	0	1
5	4	4	0	0	20	19	5	0	0	0	0	0	1
6	9	9	0	12	20	21	6	0	0	0	0	0	0
7	9	9	3	16	11	25	7	0	0	0	0	0	0
8	5	3	3	5	9	3	8	0	0	0	0	0	0
9	5	3	3	3	9	3	9	0	0	0	0	0	0
10	5	3	3	0	3	3	10	0	0	0	0	0	0
11	12	5	8	0	8	4	11	17	17	0	0	0	3
12	15	8	8	7	3	5	12	5	5	0	0	0	3
13	8	7	1	0	0	11	13	0	0	0	0	0	0
14	9	9	0	0	0	21	14	0	0	0	0	0	0
15	0	0	0	0	0	5	15	1	1	0	0	0	0
16	5	5	0	0	1	1	16	0	0	0	0	0	0
17	7	7	3	0	0	5	17	0	0	0	0	0	0
18	5	3	3	0	1	12	18	5	5	1	0	0	0
19	15	12	4	5	4	9	19	7	7	0	0	0	0
20	4	3	1	0	4	7	20	4	4	0	0	0	3
21	12	11	1	1	4	0	21	0	0	0	0	0	0
22	3	3	0	0	0	0	22	0	0	0	0	0	0
23	0	0	0	0	0	0	23	7	7	0	0	0	3
24	0	0	0	0	0	0	24	3	3	0	0	0	0
25	0	0	0	3	0	0	25	3	3	0	0	0	0
26	0	0	0	0	0	0	26	0	0	0	0	0	0
27	0	0	0	3	0	0	27	0	0	0	0	0	0
28	0	0	0	0	0	0	28	0	0	0	0	0	4
29	0	0	0	0	0	0	29	0	0	0	0	0	0
30	0	0	0	0	0	0	30	4	4	0	0	0	0
All	151	123	46	66	11	19	31	0	0	0	0	3	0
					3	5	All	64	64	1	3	3	19
January, 1994							February, 1994						

	Segment							day	Segment					
	1	1A	1B	2	3	4			1	1A	1B	2	3	4
day	0	0	0	0	0	0		0	0					
1								1			0	0	0	0
2	0	0	0	0	0	0		2	0	0	0	0	0	0
3	0	0	0	0	0	0		3	0	0	0	0	0	0
4	0	0	0	0	0	0		4	0	0	0	0	0	0
5	0	0	0	0	0	0		5	0	0	0	0	0	0
6	0	0	0	0	0	0		6	0	0	0	0	0	0
7	0	0	0	0	0	0		7	0	0	0	0	0	0
8	0	0	0	0	0	0		8	0	0	0	0	0	0
9	0	0	0	0	0	0		9	0	0	0	0	0	0
10	0	0	0	0	0	0		10	0	0	0	0	0	0
11	0	0	0	0	0	0		11	0	0	0	0	0	0
12	0	0	0	0	0	0		12	0	0	0	0	0	0
13	0	0	0	0	0	0		13	0	0	0	0	0	0
14	0	0	0	0	0	0		14	0	0	0	1	0	0
15	0	0	0	0	0	0		15	0	0	0	4	0	0
16	0	0	0	0	0	0		16	0	0	0	0	0	0
17	0	0	0	0	0	0		17	0	0	0	0	0	0
18	0	0	0	0	0	0		18	0	0	0	0	0	1
19	0	0	0	0	0	0		19	0	0	0	0	0	0
20	0	0	0	0	0	0		20	0	0	0	0	0	0
21	0	0	0	0	0	0		21	0	0	0	3	0	0
22	0	0	0	1	0	0		22	0	0	0	0	0	0
23	3	3	3	4	0	0		23	0	0	0	0	0	0
24	0	0	0	0	0	0		24	0	0	0	0	0	0
25	0	0	0	17	17	0		25	0	0	0	0	0	0
26	0	0	0	0	0	0		26	0	0	0	0	0	0
27	0	0	0	0	0	0		27	0	0	0	0	0	0
28	0	0	0	0	0	0		28	0	0	0	0	0	4
29	0	0	0	4	0	0		All	0	0	0	8	0	5
30	0	0	0	0	0	0								
31	0	0	0	0	0	0								
All	3	3	3	26	17	0								
March, 1994							April, 1994							
	Segment							Segment						

	1	1A	1B	2	3	4			1	1A	1B	2	3	4
day	0	0	0	0	0	0		day	4	4	0	5	4	0
1								1						
2	0	0	0	0	8	0		2	8	10	8	41	13	0
3	0	0	0	4	0	0		3	10	5	10	11	4	1
4	3	3	3	8	0	0		4	4	6	4	0	0	0
5	6	4	6	9	3	0		5	4	6	4	19	5	5
6	6	4	6	20	1	0		6	0	6	0	13	4	9
7	8	8	8	4	0	4		7	0	0	0	0	3	9
8	8	0	8	0	0	4		8	0	0	0	3	0	0
9	8	0	8	0	0	0		9	6	6	6	24	0	0
10	17	9	17	8	0	0		10	0	0	0	22	0	0
11	10	1	10	10	0	0		11	0	0	0	0	0	0
12	37	37	37	10	19	17		12	4	4	4	4	0	0
13	37	0	37	56	0	14		13	0	0	0	9	0	4
14	5	0	5	11	0	0		14	4	4	4	8	0	0
15	0	0	0	5	0	0		15	10	9	10	10	0	3
16	0	0	0	5	0	0		16	17	10	17	26	9	3
17	0	0	0	0	0	0		17	15	3	15	47	5	4
18	0	0	0	1	0	0		18	0	0	0	9	6	0
19	0	0	0	9	5	3		19	4	4	4	4	0	0
20	4	4	4	0	3	3		20	0	0	0	6	3	0
21	4	0	4	4	0	0		21	0	0	0	3	8	4
22	0	0	0	0	0	0		22	15	17	15	18	5	0
23	5	5	5	5	0	0		23	15	36	15	60	24	10
24	0	0	0	0	3	0		24	14	29	14	66	0	10
25	5	5	5	0	0	0		25	1	3	1	1	0	0
26	8	3	8	13	5	3		26	1	4	1	8	6	1
27	0	0	0	14	6	3		27	18	24	18	3	0	1
28	0	0	0	6	0	0		28	36	29	36	13	0	3
29	0	0	0	8	0	0		29	60	50	60	18	1	9
30	0	0	0	3	0	3		30	116	59	11	60	3	1
31	0	0	0	26	0	0		All	366	32	36	511	10	77
Al	171	83	171	239	53	54				8	2		3	
May, 1994								June, 1994						
Segment								Segment						

	1	1A	1B	2	3	4			1	1A	1B	2	3	4
day	116	19	116	159	8	1		day	91	65	91	45	22	22
1								1						
2	31	9	31	29	0	3		2	119	11 7	11 9	85	18	38
3	17	20	17	9	0	5		3	166	20 3	16 6	73	20	11
4	17	18	17	8	6	8		4	230	24 5	23 0	410	59	14
5	15	17	15	29	0	0		5	265	24 4	26 5	305	10 7	23
6	22	26	22	40	20	6		6	226	18 6	22 6	70	8	13
7	38	47	38	114	5	14		7	233	13 1	23 3	152	15	15
8	36	31	36	135	4	8		8	161	13 3	16 1	139	3	10
9	18	26	18	13	0	6		9	158	15 7	15 8	98	4	20
10	5	26	5	5	1	6		10	191	17 0	17 2	168	13	13
11	14	28	14	11	4	4		11	323	31 4	28 5	703	50	38
12	26	40	26	14	8	3		12	323	23 2	28 3	491	31	6
13	46	48	46	64	11	5		13	191	11 2	19 1	100	24	32
14	102	140	80	277	32	8		14	202	65	20 2	135	15	20
15	89	103	89	157	5	9		15	140	60	14 0	151	24	20
16	38	17	38	54	11	11		16	115	93	11 5	140	55	59
17	42	19	42	52	5	14		17	156	15 8	15 6	246	70	74
18	55	41	55	36	8	5		18	288	24 0	28 8	791	63	46
19	73	83	73	22	34	31		19	347	17 4	29 9	575	13	31
20	139	131	139	50	8	31		20	320	24 6	29 5	165	0	11
21	133	97	133	433	42	28		21	334	17 6	28 2	199	42	43
22	156	112	143	380	22	23		22	314	14	31	196	42	74

										5	4						
23	82	57	82	121	28	11		23	328	17	32	348	85	93			
24	89	47	89	80	3	18		24	366	18	36	447	10	11			
25	112	80	112	111	6	10		25	382	20	38	134	19	80			
26	125	82	125	46	66	9		26	323	12	32	741	41	12			
27	158	119	158	163	38	42		27	217	11	16	209	32	23			
28	500	463	500	699	31	20		28	236	16	23	549	41	28			
29	538	202	538	693	46	17		29	236	75	23	228	18	28			
30	406	126	406	790	27	12		30	177	48	17	561	33	17			
31	111	91	111	79	9	4		All	715	##	##	###	##	##			
Al	###	###	331	###	76	82			8								
l			4		7	5											
July, 1994							August, 1994										
	Segment								Segment								
	t							t									
	1	1A	1B	2	3	4		1	1A	1B	2	3	4				
day	241	158	241	398	61	18		day	353	15	34	383	31	57			
1								1	8	1							
2	484	426	484	977	34	27		2	316	11	31	501	48	31			
3					2	4		3		9	6						
4	480	131	480	158	19	11		4	417	19	37	475	12	10			
5				0	1	1		5		4	9		1	3			
6	305	79	305	764	16	93		6	430	17	43	634	85	13			
7				1				7		7	0			3			
8	85	79	85	239	23	10		8	619	32	61	831	18	14			
9								9	8	4		6	2				
10	120	106	120	490	31	17		10	898	48	89	###	29	18			
11								11		7	8		3	8			
12	244	232	190	286	82	29		12	939	23	89	###	20	18			
13								13		1	2		3	8			
14	394	281	394	685	10	38		14	406	16	40	604	15	83			
15					8			15		6	6		9				

9	550	250	550	172 3	17 7	85		9	274	74	27 4	517	69	82
10	579	217	528	133 7	14 7	83		10	265	15 1	26 5	746	13 1	94
11	287	148	287	352	37	10 1		11	357	18 1	32 0	495	15 7	97
12	225	116	225	425	89	32		12	598	40 6	59 8	111 5	87	12 1
13	291	133	291	536	52	69		13	106 4	63 9	## ###	###	25 8	20 0
14	297	114	297	353	34	23		14	896	14 9	89 6	210 7	26 3	17 4
15	441	255	441	544	66	66		15	476	19 9	47 6	736	89	93
16	706	453	706	199 9	23 6	94		16	421	20 0	37 3	681	11 7	70
17	626	125	578	166 6	97 0	10		17	404	19 0	39 6	515	57	83
18	332	292	277	360	69	24		18	477	20 3	47 0	672	10 2	12 2
19	345	189	345	697	40	8		19	573	23 6	57 3	995	13 8	14 7
20	378	162	378	385	61	20		20	953	72 6	92 6	300 1	36 7	20 5
21	311	78	311	632	92	70		21	900	16 7	90 0	###	23 2	24 9
22	480	346	480	720	14 9	10 7		22	378	13 4	37 8	772	10 5	12 9
23	854	563	854	###	32 0	19 4		23	225	48	22 5	471	43	66
24	859	199	859	###	20 9	24 0		24	184	65	17 2	505	12 6	70
25	462	248	380	472	13 7	15 2		25	212	11 6	21 2	604	11 1	10 0
26	342	151	342	388	31	10 3		26	361	25 1	36 1	688	11 9	13 9
27	336	89	336	533	66 3	14 3		27	768	56 7	76 8	###	21 1	22 6
28	299	11	299	503	11 1	12 4		28	629	13 7	62 9	169 7	15 4	20 9
29	486	316	486	828	14 9	17 2		29	231	63	23 1	318	63	61
30	850	485	850	###	20 7	19 8		30	128	69	12 8	327	59	80
31	796	195	796	194	15	13		31	119	54	11	188	43	79

				5	1	9					9			
All	###	###	###	###	##	##		All	152	##	##	###	##	##
									71					
September, 1994							October, 1994							
	Segment							Segment						
	1	1A	1B	2	3	4		1	1A	1B	2	3	4	
day	101	26	101	172	27	71	day	6	9					
1							1			6	65	17	15	
2	69	32	69	158	23	66	2	4	6	4	56	14	15	
3	346	302	346	498	14	79	3	27	23	27	10	6	13	
					2									
4	325	43	324	545	85	79	4	20	26	20	10	6	8	
5	273	54	258	403	65	75	5	4	6	4	9	11	3	
6	47	29	47	37	3	11	6	5	9	5	0	4	1	
7	38	15	38	34	10	13	7	6	13	6	0	11	14	
8	43	29	38	43	24	37	8	18	19	18	6	6	19	
9	61	38	61	57	15	48	9	13	11	13	10	4	20	
10	213	106	213	596	60	70	10	3	15	3	3	0	15	
11	80	14	80	324	28	10	11	0	9	0	0	0	20	
					0									
12	22	4	22	46	9	36	12	0	9	0	0	0	9	
13	9	17	9	6	9	19	13	0	26	0	0	0	4	
14	22	13	22	13	3	32	14	10	20	10	0	0	13	
15	27	15	27	29	11	32	15	13	32	13	3	3	14	
16	71	77	71	46	18	60	16	13	4	13	8	1	13	
17	94	50	94	264	41	82	17	14	13	14	9	1	10	
18	85	26	85	198	24	84	18	5	11	5	0	0	5	
19	28	28	28	26	18	28	19	8	15	8	6	0	4	
20	19	9	19	34	4	32	20	1	5	1	0	0	4	
21	17	6	17	19	19	41	21	4	13	4	1	0	4	
22	10	5	10	46	27	46	22	3	19	3	0	0	0	
23	22	41	22	24	34	64	23	3	9	3	5	0	0	
24	33	60	33	122	29	82	24	0	9	0	0	0	6	
25	55	46	55	203	11	87	25	0	15	0	0	0	8	
26	28	26	28	15	11	23	26	3	5	3	0	0	8	
27	28	14	28	29	10	23	27	4	9	4	0	0	8	
28	26	11	26	10	4	17	28	6	9	6	3	0	8	
29	19	11	19	17	13	31	29	4	20	4	1	3	8	
30	6	5	6	3	13	22	30	4	11	4	4	0	8	

Al	221	115	219	401	79	##		31	0	0	0	0	0	8
l	7	2	6	7	0			All	201	40	20	209	87	28
										0	1			5
November, 1994							December, 1994							
	Segmen							Segmen						
	t							t						
	1	1A	1B	2	3	4		1	1A	1B	2	3	4	
day	0	0	0	0	0	8		day						
1								1	0	0	0	0	0	0
2	0	0	0	0	0	8		2	0	0	0	6	0	0
3	0	0	0	0	0	8		3	0	0	0	6	0	0
4	0	0	0	0	0	8		4	0	0	0	0	0	0
5	0	0	0	0	0	0		5	0	0	0	0	0	0
6	0	0	0	0	0	0		6	0	0	0	0	0	0
7	0	0	0	0	0	0		7	0	0	0	0	0	0
8	0	0	0	0	0	0		8	0	0	0	0	0	1
9	0	0	0	0	0	0		9	0	0	0	0	0	0
10	0	0	0	0	0	0		10	0	0	0	0	0	0
11	0	0	0	0	0	0		11	0	0	0	0	0	0
12	0	0	0	0	0	0		12	0	0	0	0	0	0
13	0	0	0	0	0	0		13	0	0	0	0	0	0
14	0	0	0	0	0	0		14	0	0	0	0	0	0
15	0	0	0	0	0	0		15	0	0	0	0	0	0
16	0	0	0	0	0	0		16	0	0	0	0	0	0
17	0	0	0	0	0	0		17	0	0	0	0	0	0
18	0	0	0	0	0	0		18	0	0	0	0	3	0
19	0	0	0	0	0	0		19	0	0	0	0	0	0
20	0	0	0	0	0	0		20	0	0	0	0	0	5
21	0	0	0	0	0	0		21	0	0	0	0	0	3
22	0	0	0	0	0	0		22	0	0	0	0	0	0
23	0	0	0	0	0	0		23	0	0	0	0	0	0
24	0	0	0	0	0	0		24	0	0	0	0	0	0
25	0	0	0	0	0	0		25	0	0	0	0	0	0
26	0	0	0	0	0	0		26	0	3	0	0	0	0
27	0	0	0	0	0	0		27	0	0	0	0	0	1
28	0	0	0	0	0	0		28	0	3	0	1	1	0
29	0	0	0	0	0	0		29	0	0	0	0	0	1
30	0	0	0	0	0	0		30	0	1	0	0	0	1
Al	0	0	0	0	0	32		31	0	0	0	0	0	1

							All	0	7	0	13	4	13
January, 1995							February, 1995						
	Segment							Segment					
	1	1A	1B	2	3	4		1	1A	1B	2	3	4
day	0	0	0	0	0	0	day	0	0				
1							1			0	0	0	0
2	0	0	0	0	0	0	2	0	0	0	0	0	0
3	0	0	0	0	0	0	3	0	0	0	0	1	0
4	0	0	0	0	0	0	4	0	0	0	3	2	0
5	0	0	0	0	0	0	5	0	0	0	3	2	1
6	0	0	0	0	0	0	6	0	0	0	0	0	0
7	0	0	0	0	0	0	7	0	0	0	0	0	0
8	0	0	0	0	0	0	8	0	0	0	0	0	0
9	0	0	0	0	0	0	9	0	0	0	0	0	0
10	0	0	0	0	0	0	10	0	0	0	5	0	0
11	0	0	0	0	0	0	11	3	0	3	3	3	0
12	2	0	2	0	0	0	12	0	0	0	0	0	0
13	0	0	0	0	0	0	13	0	0	0	0	0	0
14	0	0	0	0	0	0	14	0	0	0	0	0	0
15	0	0	0	3	0	0	15	0	0	0	0	0	0
16	0	0	0	3	1	0	16	0	0	0	0	0	0
17	0	0	0	0	0	0	17	0	0	0	0	5	0
18	0	0	0	0	0	0	18	0	0	0	0	0	0
19	0	0	0	0	0	0	19	0	0	0	0	0	0
20	0	0	0	0	0	0	20	0	0	0	0	0	0
21	0	0	0	2	0	0	21	0	0	0	0	0	0
22	0	0	0	0	0	0	22	0	0	0	0	0	0
23	0	0	0	0	0	0	23	0	0	0	3	0	0
24	0	0	0	0	0	0	24	5	5	5	0	0	0
25	0	0	0	0	0	0	25	9	5	9	0	9	9
26	0	0	0	0	0	3	26	5	0	5	8	7	9
27	0	0	0	0	0	0	27	0	0	0	0	0	0
28	0	0	0	3	3	0	28	0	0	0	0	0	0
29	0	0	0	0	0	0	All	22	10	22	25	29	19
30	0	0	0	0	0	5							
31	0	0	0	0	0	2							
Al	2	0	2	11	4	10							

March, 1995							April, 1995						
day	Segment						day	Segment					
	1	1A	1B	2	3	4		1	1A	1B	2	3	4
1	0	0	0	0	0	0	1	8	5	8	65	30	13
2	0	0	0	0	0	0	2	13	0	13	36	3	11
3	0	0	0	0	0	13	3	9	0	9	14	0	1
4	0	0	0	0	0	1	4	7	2	7	15	0	2
5	0	0	0	0	0	5	5	2	0	2	2	0	0
6	0	0	0	5	0	0	6	3	3	3	0	0	0
7	0	0	0	0	5	5	7	11	1	11	14	0	6
8	0	0	0	0	0	5	8	13	0	13	40	6	7
9	0	0	0	0	0	5	9	5	1	3	26	0	18
10	0	0	0	0	0	5	10	16	16	16	0	0	5
11	34	34	34	0	0	9	11	16	0	16	2	0	22
12	41	0	41	38	1	9	12	16	0	16	6	0	6
13	8	1	8	2	3	7	13	16	0	16	2	0	2
14	7	0	7	0	2	6	14	17	0	17	24	0	9
15	7	0	7	0	0	3	15	5	1	3	30	5	11
16	7	0	7	7	0	0	16	3	0	3	16	2	0
17	0	0	0	2	0	2	17	0	0	0	0	2	5
18	5	5	5	2	0	3	18	1	1	0	0	0	0
19	5	0	5	18	2	3	19	0	0	0	0	0	11
20	5	0	5	0	16	7	20	3	0	3	8	0	9
21	10	0	10	6	0	2	21	24	15	21	15	6	10
22	5	0	5	0	0	3	22	41	19	23	36	8	16
23	0	0	0	2	0	16	23	40	21	21	63	5	19
24	0	0	0	3	0	17	24	6	6	0	30	0	5
25	6	0	6	7	3	5	25	7	6	3	5	0	1
26	3	0	3	10	6	3	26	11	10	3	13	18	26
27	0	0	0	0	0	5	27	9	6	5	5	0	18
28	10	10	10	0	0	8	28	42	27	16	1	0	23
29	13	2	13	0	0	3	29	33	18	19	65	0	28
30	10	0	10	10	0	14	30	41	17	24	33	0	36
31	3	3	3	0	0	8	All	418	17	29	566	85	32
Al	179	55	179	112	38	17			5	4			0
l						2							

May, 1995							June, 1995						
day	Segment						day	Segment					
	1	1A	1B	2	3	4		1	1A	1B	2	3	4
1	30	6	24	27	9	2	1	98	38	73	145	91	30
2	10	5	6	9	2	5	2	219	11	14	112	27	49
3	17	17	0	5	0	2	3	295	93	22	743	27	82
4	10	8	7	1	6	11	4	362	13	24	472	13	10
5	32	16	18	6	0	11	5	264	16	20	87	27	76
6	68	44	39	112	1	31	6	226	39	19	168	24	80
7	74	14	60	111	5	25	7	169	56	11	105	5	71
8	34	3	31	74	10	6	8	175	89	12	160	65	58
9	14	6	8	19	2	13	9	230	99	16	196	33	84
10	19	13	7	28	3	14	10	357	16	27	839	12	11
11	24	22	6	38	5	10	11	309	79	25	481	15	63
12	47	39	11	42	5	22	12	142	22	13	123	10	48
13	71	36	34	134	24	30	13	139	50	11	160	19	57
14	57	35	52	175	3	8	14	171	66	14	62	7	63
15	71	19	54	13	5	28	15	194	58	15	169	5	25
16	60	11	49	35	13	24	16	330	20	22	174	23	30
17	68	19	49	44	2	25	17	416	14	28	782	62	32
18	83	19	65	76	21	46	18	376	18	29	521	35	31
19	83	42	62	68	62	13	19	222	51	20	106	92	54

6	291	84	228	415	95	58		6	950	19	83	212	24	23
										1	6	2	8	9
7	323	126	295	417	68	73		7	488	21	44	609	13	80
										9	6		8	
8	531	195	489	155	20	11		8	411	11	35	707	17	12
				0	4	7				5	2		5	1
9	393	18	383	933	77	12		9	343	95	32	807	82	14
						4					7			6
10	209	40	189	276	56	60		10	342	59	31	375	21	19
											8		9	8
11	166	41	145	391	10	57		11	454	17	42	119	24	17
					5					4	1	5	6	4
12	219	139	174	317	13	90		12	779	32	70	###	42	34
					0					9	4		4	2
13	248	88	201	519	39	73		13	784	13	74	###	18	30
										0	4		2	0
14	458	239	439	558	48	81		14	422	82	39	875	18	12
											7		8	1
15	775	259	730	###	26	74		15	415	13	34	635	14	15
					1					4	9		9	7
16	798	138	709	169	14	54		16	395	11	37	769	11	98
				3	5					4	5		1	
17	397	140	378	555	10	33		17	402	11	39	655	19	12
					1					5	3		5	5
18	328	130	242	448	67	33		18	408	11	36	117	16	19
										1	4	6	8	6
19	344	136	328	525	75	62		19	684	22	64	###	40	31
										5	4		1	7
20	344	74	315	451	10	62		20	692	71	65	227	34	28
					5						6	1	9	6
21	447	129	413	884	23	10		21	317	74	28	555	10	14
					0	4					9		3	4
22	797	277	746	###	19	15		22	215	51	18	446	11	14
					8	2					1		4	2
23	810	170	782	###	21	12		23	235	96	17	492	10	24
					7	0					7		8	8
24	390	147	275	532	15	92		24	236	63	19	346	11	12
					0						7		5	4
25	345	196	318	481	55	82		25	483	23	43	636	19	26
										7	0		6	0
26	333	58	307	526	10	11		26	662	25	62	###	30	46
					0	1				4	9		0	7
27	305	123	251	555	87	10		27	597	62	58	188	18	30
					0						1	8	3	9
28	468	240	424	603	14	11		28	256	57	24	604	34	11

					6	9					5			2
29	679	183	636	202	21	12		29	183	33	16	337	11	12
				1	4	9					1		2	1
30	656	90	622	154	23	14		30	119	32	97	262	70	13
				6	0	5								8
31	365	47	342	449	10	73		31	71	32	54	212	36	82
					9									
All	####	###	####	####	##	##		All	####	##	##	####	##	##
l														
September, 1995							October, 1995							
	Segment							Segment						
	1	1A	1B	2	3	4		1	1A	1B	2	3	4	
day	111	59	81	269	84	19		day	67	15	54	248	76	16
1						9		1						3
2	617	403	531	122	24	39		2	35	18	27	10	38	10
				4	6	5								9
3	623	101	544	112	12	43		3	35	9	27	17	25	71
				9	8	0								
4	403	47	360	749	85	24		4	54	38	33	28	25	63
						2								
5	39	25	39	92	38	67		5	48	11	36	39	55	66
6	60	24	44	31	16	98		6	70	26	56	21	59	95
7	93	42	64	24	30	89		7	73	24	51	73	34	10
														7
8	126	63	101	96	93	13		8	46	26	23	31	38	71
						3								
9	238	89	205	107	15	33		9	56	39	19	23	18	51
				9	6	3								
10	244	54	211	643	59	30		10	25	15	10	23	36	57
						5								
11	70	22	62	128	24	89		11	18	11	11	10	39	63
12	51	18	40	67	22	96		12	26	21	6	11	52	68
13	43	22	32	119	71	98		13	42	34	11	32	38	82
14	38	13	35	77	40	89		14	38	32	6	104	52	10
														1
15	103	49	68	79	73	14		15	35	30	9	55	16	70
						1								
16	239	144	165	104	20	27		16	32	14	18	7	15	34
				3	2	7								
17	177	28	155	779	14	19		17	42	14	31	7	11	17

					6	6													
18	38	14	33	58	43	12		18	31	2	28	28	17	25					
19	39	8	31	42	18	11		19	21	3	17	10	18	34					
20	51	19	32	79	39	96		20	32	17	18	49	16	33					
21	42	27	15	189	44	11		21	33	17	16	32	33	34					
22	65	50	46	199	64	15		22	28	11	17	41	15	32					
23	106	51	66	107	88	19		23	25	10	17	32	23	21					
24	92	33	74	588	48	17		24	26	21	11	7	13	25					
25	46	16	35	64	51	76		25	24	17	13	7	17	27					
26	43	18	39	60	22	87		26	16	10	10	5	9	25					
27	54	10	49	41	33	77		27	30	18	13	8	10	23					
28	57	10	48	30	59	99		28	34	26	9	5	9	21					
29	87	33	76	30	55	11		29	26	14	13	10	8	21					
30	79	13	67	218	59	13		30	25	21	5	13	0	9					
All	###	150	###	###	##	##		31	11	8	3	2	7	3					
								All	110	57	61	988	82	##					
									4	2	8		2						
November, 1995							December, 1995												
	Segment								Segment										
	t							t											
	1	1A	1B	2	3	4		1	1A	1B	2	3	4						
day	3	2	1	1	7	0		day	0	0									
1								1			0	0	0	0					
2	3	2	1	3	8	2		2	7	7	0	0	0	0					
3	8	6	2	7	1	1		3	0	0	0	0	0	0					
4	10	8	2	5	7	10		4	2	2	0	0	0	0					
5	8	6	2	7	6	5		5	0	0	0	0	0	0					
6	3	3	0	3	5	0		6	0	0	0	0	0	0					
7	1	1	0	0	5	0		7	0	0	0	3	0	0					
8	2	2	0	0	0	0		8	0	0	0	0	3	0					
9	3	3	0	0	0	0		9	0	0	0	0	0	0					
10	3	3	0	3	9	0		10	0	0	0	0	0	0					

11	8	8	0	2	6	0		11	0	0	0	0	0	0				
12	14	10	3	16	2	3		12	0	0	0	0	0	0				
13	6	2	3	3	0	0		13	0	0	0	0	0	0				
14	1	1	0	2	0	0		14	0	0	0	0	0	0				
15	11	11	0	0	0	2		15	0	0	0	0	0	0				
16	1	1	0	0	0	0		16	3	3	0	0	0	0				
17	0	0	0	0	1	1		17	5	5	0	3	2	3				
18	9	9	0	2	2	1		18	0	0	0	0	0	0				
19	2	2	0	0	0	1		19	0	0	0	2	0	0				
20	2	2	0	1	0	0		20	3	3	0	0	0	0				
21	3	3	0	0	0	0		21	3	3	0	0	0	0				
22	1	1	0	0	0	0		22	2	0	2	2	0	0				
23	2	0	2	2	0	0		23	3	3	0	0	0	0				
24	3	3	0	0	6	9		24	2	2	0	0	0	0				
25	2	2	0	7	0	14		25	0	0	0	0	0	0				
26	3	3	0	0	0	11		26	3	3	0	0	3	2				
27	1	1	0	0	0	0		27	6	6	0	0	0	0				
28	5	5	0	0	0	1		28	0	0	0	0	0	2				
29	2	2	0	1	0	0		29	0	0	0	0	0	0				
30	0	0	0	0	0	5		30	5	5	0	0	0	0				
Al l	120	102	16	65	65	66		31	1	1	0	0	1	1				
								All	45	43	2	10	9	8				
January, 1996								Februar y, 1996										
	Segmen t								Segmen t									
	1	1A	1B	2	3	4			1	1A	1B	2	3	4				
da y	0	0	0	0	0	0		day	0	0								
1								1			0	0	0	0				
2	0	0	0	0	0	0		2	0	0	0	0	0	0				
3	0	0	0	0	0	0		3	0	0	0	0	0	0				
4	0	0	0	0	0	0		4	0	0	0	0	0	0				
5	0	0	0	0	0	0		5	0	0	0	0	0	0				
6	0	0	0	0	0	0		6	0	0	0	0	0	0				
7	0	0	0	0	0	0		7	0	0	0	0	0	0				
8	0	0	0	0	0	0		8	0	0	0	0	0	0				
9	0	0	0	0	0	0		9	0	0	0	0	0	0				
10	0	0	0	0	0	0		10	0	0	0	0	0	0				
11	0	0	0	0	0	0		11	0	0	0	0	0	0				
12	0	0	0	0	0	0		12	0	0	0	0	0	0				

									0	3				
10	76	25	61	24	13	6		10	219	71	17	129	0	25
11	161	64	120	130	26	48		11	175	69	12	180	29	45
12	125	34	109	99	18	25		12	175	69	10	101	18	50
13	85	15	70	53	0	25		13	216	11	16	164	19	33
14	44	15	33	69	3	19		14	340	17	23	213	21	33
15	74	26	49	30	13	19		15	431	17	30	817	98	11
16	105	46	59	53	9	18		16	450	17	34	520	10	86
17	143	86	103	106	26	36		17	278	10	23	184	73	78
18	180	65	130	239	46	46		18	301	13	24	215	41	53
19	188	61	128	169	39	26		19	265	74	20	293	34	41
20	91	25	70	106	71	43		20	273	10	23	308	15	43
21	86	31	66	61	11	9		21	366	15	27	389	39	68
22	86	53	53	45	25	45		22	514	21	41	140	16	13
23	101	59	59	55	1	30		23	364	90	32	797	40	13
24	220	125	166	126	15	19		24	165	73	14	204	18	78
25	878	599	820	101	12	16		25	290	16	25	324	34	56
26	874	90	798	106	70	16		26	301	43	28	742	54	70
27	605	63	550	695	25	12		27	304	88	25	513	55	65
28	105	50	95	19	3	29		28	470	19	41	710	78	73
29	150	63	125	46	0	9		29	553	13	50	180	21	73
30	200	73	176	131	14	31		30	523	11	48	135	14	11
31	231	75	188	166	38	16		All	947	##	##	####	##	##
									6					

Al	###	192	416	###	74	##											
l		1	4		7												
July, 1996							August, 1996										
	Segment							Segment									
	1	1A	1B	2	3	4		1	1A	1B	2	3	4				
day	248	85	201	350	21	50	day	338	14	30	552	14	16				
y									4	0		5	6				
1							1										
2	243	93	183	438	31	70	2	560	27	49	110	22	14				
								1	3	2	3	0					
3	230	88	161	511	16	79	3	953	37	91	###	32	23				
					3			1	0		9	3					
4	353	220	325	804	11	11	4	101	20	93	168	17	24				
					5	3		2	0	7	2	1	8				
5	538	203	449	109	12	11	5	491	14	43	577	14	16				
				9	4	4		1	1		1	4					
6	654	189	605	###	11	12	6	398	93	38	708	23	18				
					8	0				1		4	3				
7	527	71	494	118	13	63	7	346	10	32	845	12	16				
				4	5			8	3			1	5				
8	258	89	221	325	64	56	8	335	10	31	695	16	12				
								5	1			1	8				
9	271	126	208	473	71	10	9	489	19	46	107	25	18				
						5		0	1	7	0	0					
10	266	121	206	456	68	59	10	873	41	79	###	38	27				
								1	0			6	1				
11	184	68	156	504	89	34	11	915	24	82	###	26	22				
								9	3			5	5				
12	288	153	231	593	12	96	12	495	11	46	850	19	15				
					9			8	8			4	4				
13	675	371	589	###	21	13	13	360	58	33	759	16	13				
					3	1				9		4	9				
14	670	138	623	167	22	21	14	286	59	26	708	22	17				
				5	1	9				6		8	3				
15	413	100	370	658	14	81	15	160	48	15	934	33	28				
					9					4		9	4				
16	250	56	229	612	90	54	16	114	20	11	143	35	41				
										1	3	1	4				
17	234	80	199	474	12	75	17	124	58	12	###	63	60				
					1					0		4	5				
18	308	123	280	338	50	61	18	125	18	12	###	39	58				

										5		3	3				
19	582	280	545	945	11	96		19	3	0	3	464	11	32			
					6								8	1			
20	990	461	898	###	28	30		20	3	0	3	543	11	32			
					3	3							8	3			
21	950	170	849	###	25	32		21	58	58	18	715	16	22			
					9	6							3	9			
22	544	149	461	935	12	98		22	128	79	96	622	25	17			
					5								0	5			
23	421	99	410	694	48	76		23	401	20	36	858	20	18			
										5	1		0	5			
24	385	91	346	797	17	80		24	674	20	58	###	41	32			
					5					0	9		5	9			
25	364	116	339	933	17	58		25	540	90	47	215	16	23			
					3						9	6	3	0			
26	520	220	456	873	15	96		26	280	11	25	552	86	15			
					8					9	9			0			
27	825	350	742	###	36	28		27	189	25	17	285	10	15			
					1	4					4		5	8			
28	833	185	790	###	37	27		28	171	73	15	299	90	15			
					8	6					0			3			
29	461	140	444	559	71	80		29	168	63	15	378	36	12			
											6			1			
30	370	76	348	745	88	80		30	188	75	15	572	17	16			
											3		9	1			
31	275	80	256	602	21	15		31	625	39	60	###	43	35			
					0	3				4	0		3	1			
All	###	479	###	###	##	##		All	118	##	##	###	##	##			
l		1							02								
September, 1996							October, 1996										
	Segment								Segment								
	1	1A	1B	2	3	4			1	1A	1B	2	3	4			
day	655	61	610	###	24	37		day	50	36	18	23	21	59			
1					3	1		1									
2	338	18	324	894	11	24		2	31	18	14	14	13	53			
					5	0											
3	39	23	16	124	31	93		3	58	49	39	4	18	63			
4	43	34	31	136	18	98		4	89	34	59	45	24	66			
5	48	16	39	54	53	74		5	121	91	63	138	13	10			
													1	8			

6	101	41	94	180	11	11		6	133	66	69	163	76	10	5
7	306	134	296	141	15	20		7	68	34	56	15	25	78	
8	274	41	266	123	13	23		8	59	14	48	40	8	63	
9	74	10	69	101	69	13		9	55	31	31	44	26	64	
10	95	23	73	115	59	11		10	68	33	48	30	21	56	
11	44	13	44	140	63	12		11	63	30	40	56	55	86	
12	63	18	48	56	55	13		12	134	79	55	80	64	10	8
13	109	34	100	103	58	18		13	95	51	45	93	43	96	
14	289	116	239	112	14	19		14	44	24	20	24	21	33	
15	214	19	203	599	84	18		15	38	26	23	49	25	40	
16	46	25	36	93	63	10		16	64	43	33	8	10	25	
17	56	31	35	49	53	11		17	83	44	46	38	14	21	
18	40	14	35	54	73	12		18	68	34	35	11	19	36	
19	78	35	69	113	55	90		19	58	25	43	84	23	23	
20	120	39	101	168	13	18		20	74	53	30	26	39	30	
21	148	71	126	585	11	28		21	56	25	38	15	30	20	
22	144	15	131	496	9	22		22	53	19	36	14	14	10	
23	43	20	23	71	16	74		23	44	15	29	16	16	8	
24	24	15	15	49	60	95		24	30	18	21	9	23	10	
25	31	20	16	19	49	11		25	40	16	24	11	20	15	
26	51	36	24	80	36	11		26	55	35	23	21	15	20	
27	73	40	39	21	55	10		27	35	19	24	25	4	19	
28	141	59	99	373	86	11		28	39	26	13	15	6	6	
29	145	41	105	236	63	10		29	20	18	3	3	5	15	

30	51	14	39	39	34	59		30	29	29	5	6	5	5
Al	###	107	###	###	##	##		31	18	11	6	5	5	8
l		6						All	187	##	##	112	81	##
									2			5	9	
November, 1996							December, 1996							
Segment							Segment							
	1	1A	1B	2	3	4		1	1A	1B	2	3	4	
day	19	9	14	6	6	0	day	1	1					
1							1			0	0	3	0	
2	35	18	18	9	8	10	2	0	0	0	0	0	0	
3	36	20	23	13	10	9	3	0	0	0	0	0	0	
4	26	4	23	13	8	5	4	0	0	0	0	0	0	
5	10	0	10	0	6	0	5	0	0	0	0	0	0	
6	13	3	10	10	9	10	6	1	1	0	0	0	0	
7	4	3	1	0	8	10	7	0	0	0	13	0	0	
8	8	6	1	4	10	8	8	4	4	0	0	0	0	
9	19	16	3	23	20	13	9	0	0	0	0	0	0	
10	19	16	3	14	0	5	10	0	0	0	0	0	0	
11	10	8	3	0	14	4	11	0	0	0	0	0	0	
12	8	8	0	0	0	3	12	0	0	0	0	0	0	
13	6	4	3	9	0	3	13	0	0	0	0	0	0	
14	1	1	0	0	9	3	14	0	0	0	0	0	0	
15	1	1	0	6	0	0	15	0	0	0	0	0	0	
16	11	11	0	10	4	0	16	0	0	0	0	0	0	
17	4	4	0	5	11	9	17	0	0	0	0	0	0	
18	6	6	0	0	0	0	18	0	0	0	0	0	0	
19	1	1	0	0	0	0	19	0	0	0	0	0	0	
20	1	1	0	0	0	0	20	0	0	0	0	0	0	
21	0	0	0	0	0	0	21	0	0	0	0	0	0	
22	6	6	0	0	0	0	22	0	0	0	0	0	0	
23	4	4	0	0	0	0	23	0	0	0	0	0	0	
24	0	0	0	0	0	0	24	0	0	0	0	0	0	
25	0	0	0	0	0	0	25	0	0	0	0	0	0	
26	0	0	0	0	0	0	26	0	0	0	0	0	0	
27	5	5	0	0	0	0	27	0	0	0	0	0	0	
28	0	0	0	0	0	0	28	0	0	0	0	0	0	
29	15	15	0	0	0	0	29	0	0	0	0	0	0	
30	4	4	0	0	3	4	30	3	3	0	0	0	0	

Al	272	174	112	122	126	96		31	0	0	0	0	0	0
								All	9	9	0	13	3	0
January, 1997							February, 1997							
	Segment							Segment						
	1	1A	1B	2	3	4		1	1A	1B	2	3	4	
day	0	0	0	0	0	0		day	0	0				
1								1			0	5	0	0
2	0	0	0	0	0	0		2	0	0	0	0	0	0
3	0	0	0	0	0	0		3	0	0	0	0	0	0
4	0	0	0	0	0	0		4	0	0	0	0	0	0
5	0	0	0	0	0	0		5	0	0	0	0	0	0
6	0	0	0	0	0	0		6	0	0	0	0	0	0
7	0	0	0	0	0	0		7	0	0	0	0	0	0
8	0	0	0	0	0	0		8	0	0	0	0	0	0
9	0	0	0	0	0	0		9	0	0	0	0	0	0
10	0	0	0	0	0	0		10	0	0	0	0	0	0
11	0	0	0	0	0	3		11	0	0	0	0	0	0
12	0	0	0	0	0	0		12	0	0	0	0	0	0
13	0	0	0	0	0	0		13	0	0	0	0	0	0
14	0	0	0	0	0	0		14	0	0	0	0	0	0
15	0	0	0	0	0	0		15	0	0	0	0	0	0
16	0	0	0	0	0	0		16	0	0	0	0	0	0
17	0	0	0	0	0	0		17	0	0	0	0	0	0
18	0	0	0	5	0	0		18	0	0	0	0	4	0
19	0	0	0	0	0	0		19	0	0	0	0	0	0
20	0	0	0	0	0	0		20	4	4	4	0	0	0
21	0	0	0	1	0	0		21	4	0	4	0	0	0
22	0	0	0	0	0	0		22	5	1	5	4	0	0
23	0	0	0	0	0	0		23	5	4	1	0	4	0
24	0	0	0	0	0	0		24	1	0	1	1	0	0
25	0	0	0	0	0	0		25	0	0	0	0	0	0
26	0	0	0	0	0	0		26	0	0	0	0	0	0
27	0	0	0	0	0	0		27	0	0	0	0	0	0
28	0	0	0	0	0	0		28	0	0	0	0	0	0
29	0	0	0	0	0	0		All	19	9	15	10	8	0
30	0	0	0	0	0	0								
31	0	0	0	0	0	0								
Al	0	0	0	6	0	3								

March, 1997							April, 1997						
day	Segment						day	Segment					
	1	1A	1B	2	3	4		1	1A	1B	2	3	4
1	8	0	8	0	0	0	1	0	0	0	0	0	0
2	8	0	8	8	0	0	2	0	0	0	1	0	0
3	0	0	0	0	0	0	3	0	0	0	0	0	0
4	0	0	0	0	0	0	4	13	0	13	0	0	0
5	0	0	0	0	0	0	5	15	1	15	66	1	1
6	0	0	0	0	0	0	6	13	0	13	65	0	0
7	0	0	0	0	0	0	7	20	0	20	0	0	0
8	25	0	25	0	0	0	8	35	15	35	24	0	0
9	25	0	25	35	0	0	9	16	1	16	5	0	0
10	0	0	0	0	0	0	10	16	0	16	0	0	0
11	0	0	0	3	0	0	11	16	0	16	1	0	0
12	0	0	0	0	0	0	12	23	7	23	25	19	7
13	3	3	3	0	0	0	13	8	0	8	19	13	5
14	3	0	3	3	0	0	14	0	0	0	0	0	1
15	1	0	1	0	0	0	15	0	0	0	0	0	0
16	1	0	1	0	0	0	16	0	0	0	0	0	9
17	1	0	1	4	0	0	17	3	3	3	0	5	12
18	0	0	0	0	0	0	18	19	3	19	3	0	0
19	3	0	3	0	0	0	19	21	4	20	52	0	0
20	3	0	3	3	0	0	20	36	11	35	36	0	0
21	3	0	3	3	0	0	21	11	0	11	9	0	0
22	4	4	4	1	0	3	22	9	0	9	0	1	0
23	4	0	4	5	0	0	23	9	0	9	0	4	0
24	0	0	0	0	0	0	24	15	5	9	9	4	0
25	0	0	0	3	7	11	25	37	29	24	3	0	1
26	0	0	0	1	1	7	26	109	68	52	84	27	23
27	0	0	0	4	0	0	27	74	31	44	60	9	16
28	1	0	1	5	0	0	28	8	8	0	0	0	0
29	8	7	1	4	0	0	29	0	0	0	1	1	0
30	0	0	0	0	0	0	30	16	11	5	29	1	0
31	0	0	0	0	0	0	All	542	197	415	492	85	75
Al	101	14	94	82	8	21							

May, 1997							June, 1997						
day	Segment						day	Segment					
	1	1A	1B	2	3	4		1	1A	1B	2	3	4
1	19	13	9	51	0	5	1	251	12	15	223	86	17
2	23	17	12	29	5	5	2	185	78	14	52	4	13
3	47	20	32	47	4	0	3	175	43	13	96	1	7
4	35	15	20	24	7	0	4	174	85	10	70	24	11
5	8	3	5	51	0	0	5	295	19	21	86	0	1
6	13	5	12	0	45	0	6	336	12	23	179	8	9
7	19	7	12	0	0	5	7	314	12	19	270	10	94
8	25	12	13	13	9	3	8	284	11	19	408	40	29
9	43	28	19	19	3	9	9	254	13	14	70	11	9
10	58	51	31	132	27	20	10	218	92	18	179	19	9
11	33	7	27	44	12	20	11	202	66	14	120	43	7
12	29	12	17	9	3	7	12	267	10	19	161	23	5
13	54	9	45	19	0	4	13	307	11	21	288	12	5
14	69	19	53	37	4	0	14	251	13	16	714	14	45
15	68	15	62	44	44	16	15	267	13	20	365	68	40
16	133	45	94	64	17	20	16	250	10	16	198	20	5
17	173	69	130	249	88	29	17	346	19	26	367	33	25
18	150	37	114	274	96	31	18	350	15	30	191	37	57
19	51	28	31	36	70	65	19	403	82	35	268	36	61

											8					
20	54	20	37	39	7	62		20	488	13	41	614	17	12		
										4	9		5	4		
21	88	35	66	36	0	0		21	427	82	35	905	19	15		
											8		9	9		
22	100	33	69	104	0	0		22	312	97	25	589	40	86		
											3		5			
23	155	80	120	142	32	8		23	276	17	21	237	13	48		
										0	3		4			
24	575	371	529	829	20	12		24	287	10	25	460	48	54		
					6	4				4	8					
25	569	43	532	910	18	14		25	334	60	30	574	53	68		
					3	5					4					
26	391	21	381	704	35	13		26	304	61	29	376	88	86		
					4						0					
27	81	28	58	70	16	8		27	396	15	35	635	35	13		
										4	2		0	3		
28	183	105	140	29	24	4		28	405	85	35	141	23	15		
											4	1	7	5		
29	193	43	158	185	24	15		29	331	73	28	735	11	10		
											6		8	8		
30	238	69	183	150	57	24		30	162	61	11	223	48	48		
											4					
31	221	92	140	355	88	43		All	885	###	##	####	##	##		
									1							
All	###	135	315	###	##	80										
l		2	1			6										
July, 1997							August, 1997									
	Segmen t								Segmen t							
	1	1A	1B	2	3	4		1	1A	1B	2	3	4			
day	178	82	161	202	90	49		day	346	13	30	121	27	34		
y										6	2	6	8	3		
1								1								
2	154	35	129	167	76	52		2	710	29	66	###	31	30		
										6	1		9	6		
3	226	110	193	457	54	24		3	727	14	67	207	15	13		
										6	4	1	7	7		
4	324	153	270	106	22	13		4	336	13	29	566	16	12		
				2	6	6				3	9		3	2		
5	380	112	342	140	21	16		5	448	13	35	486	80	10		
				7	4	9				2	8			0		

6	359	77	339	784	72	70		6	549	20	44	743	20	10
										2	9		1	2
7	186	92	161	334	84	27		7	462	24	45	730	17	10
										1	3		9	2
8	194	43	174	311	61	21		8	570	11	55	157	28	19
										7	6	5	3	7
9	262	126	174	355	44	41		9	759	31	71	307	56	22
										6	0	1	9	6
10	304	114	266	365	44	60		10	670	89	61	201	22	22
											9	1	2	5
11	339	102	295	746	14	65		11	330	10	30	932	27	14
					1					4	7		9	9
12	493	183	444	170	16	81		12	298	12	24	715	16	14
				4	1					8	1		9	4
13	486	84	431	122	30	94		13	346	16	31	552	15	15
				9	8					3	5		8	2
14	260	85	217	653	66	19		14	420	14	39	969	19	19
										1	9		5	1
15	259	105	207	633	94	12		15	557	15	53	141	19	22
										7	3	9	5	3
16	249	144	165	377	27	12		16	710	25	64	###	53	30
										9	3		8	6
17	286	120	253	552	13	53		17	726	15	68	###	44	33
					4					2	6		0	2
18	409	148	360	785	17	12		18	221	49	19	720	16	17
					3	2					0		5	8
19	642	221	577	###	54	22		19	210	96	14	769	12	16
					4	9					5		8	2
20	577	93	537	145	15	22		20	134	65	11	706	21	15
				8	7	1					6		5	4
21	320	118	258	597	13	10		21	235	68	20	530	13	15
					0	8					2		4	0
22	299	145	255	477	40	12		22	215	82	19	990	29	23
						9					8		0	3
23	330	76	304	732	17	12		23	459	15	44	###	39	27
					3	1				8	0		5	8
24	284	86	238	742	17	93		24	468	82	40	149	32	27
					7						3	9	3	4
25	351	109	306	874	25	15		25	245	74	23	452	16	17
					8	5					0		9	0
26	653	246	594	###	30	20		26	239	51	21	336	86	17
					3	9					0			1
27	724	178	639	167	19	16		27	132	28	12	251	68	19
				3	0	9					0			0
28	556	186	457	734	51	78		28	173	52	12	316	10	14

											9		1	8
29	409	106	389	637	98	78		29	185	70	17	541	24	25
											1		7	1
30	380	33	360	597	96	11		30	541	27	50	176	50	52
						0				9	2	5	9	6
31	300	85	282	776	24	20		31	537	82	48	184	29	46
					2	5					5	5	5	1
All	####	####	####	####	##	##		All	####	##	##	####	##	##
l														
September, 1997							October, 1997							
	Segment							Segment						
	1	1A	1B	2	3	4		1	1A	1B	2	3	4	
day	178	17	163	748	11	34		day	43	27	20	3	39	98
1					7	4		1						
2	43	13	29	109	17	72		2	52	23	29	12	43	54
3	8	0	8	73	39	10		3	56	23	44	8	51	96
						8								
4	39	17	31	102	43	11		4	58	17	48	82	70	96
						4								
5	73	35	41	93	68	17		5	73	27	60	56	73	12
						7								0
6	328	118	311	115	28	29		6	66	12	56	23	36	94
				6	4	2								
7	318	19	302	884	10	29		7	61	19	47	44	25	68
					9	4								
8	93	39	73	197	54	15		8	35	13	25	7	21	56
						8								
9	65	21	49	108	60	17		9	45	19	36	19	33	44
						0								
10	44	16	33	97	82	17		10	81	35	49	24	37	62
						9								
11	56	33	40	43	65	14		11	106	60	47	49	62	10
						2								2
12	126	76	102	112	15	23		12	74	40	44	74	56	76
					9	4								
13	229	76	191	130	20	33		13	58	36	33	24	20	45
				1	6	2								
14	272	72	239	585	12	33		14	44	9	40	19	19	32
					1	2								
15	114	19	104	52	41	16		15	62	29	37	13	23	24

						7											
16	98	19	92	72	19	161		16	64	39	31	21	17	29			
17	44	4	40	52	24	136		17	68	36	32	13	17	48			
18	85	28	81	37	102	133		18	61	28	36	108	41	86			
19	112	25	100	81	108	181		19	81	45	49	28	20	78			
20	174	65	154	670	140	270		20	64	9	57	20	13	40			
21	145	24	121	540	116	222		21	47	9	37	28	12	9			
22	65	16	53	121	58	121		22	27	21	5	0	11	15			
23	19	4	15	51	66	125		23	41	35	12	11	8	17			
24	31	17	19	76	97	140		24	52	32	20	17	33	29			
25	40	24	28	129	45	153		25	65	51	17	29	19	28			
26	73	45	29	148	93	158		26	61	49	19	23	19	20			
27	102	65	70	444	162	169		27	15	3	12	9	12	1			
28	117	49	86	260	128	153		28	19	7	12	0	21	5			
29	44	15	31	13	49	90		29	20	7	13	35	15	5			
30	53	19	36	24	56	104		30	24	16	8	0	17	13			
All	3188	990	2671	####	###	##		31	17	9	9	9	4	5			
								All	1640	785	984	808	887	##			
November, 1997								December, 1997									
	Segment								Segment								
	1	1A	1B	2	3	4		1	1A	1B	2	3	4				
day	7	4	3	3	0	1		day	0	0							
1								1			0	0	0	0			
2	3	0	3	3	3	0		2	0	0	0	0	0	0			

3	0	0	0	0	0	0		3	0	0	0	0	0	0			
4	0	0	0	0	0	0		4	0	0	0	0	0	0			
5	0	0	0	0	0	0		5	0	0	0	0	0	0			
6	4	4	4	0	0	0		6	0	0	0	0	0	0			
7	4	0	4	0	0	0		7	0	0	0	0	0	0			
8	8	4	4	4	0	0		8	0	0	0	0	0	0			
9	0	0	0	0	0	0		9	0	0	0	0	0	0			
10	0	0	0	0	0	0		10	0	0	0	0	0	0			
11	0	0	0	0	0	0		11	0	0	0	0	0	0			
12	0	0	0	0	0	0		12	0	0	0	0	0	0			
13	0	0	0	0	0	0		13	0	0	0	0	0	0			
14	0	0	0	0	0	0		14	0	0	0	0	0	0			
15	0	0	0	0	0	0		15	0	0	0	0	0	0			
16	0	0	0	0	0	0		16	0	0	0	0	0	0			
17	0	0	0	0	0	0		17	0	0	0	0	0	0			
18	0	0	0	0	0	0		18	0	0	0	0	0	0			
19	0	0	0	0	0	0		19	0	0	0	0	0	0			
20	0	0	0	0	0	0		20	0	0	0	0	0	0			
21	0	0	0	0	0	0		21	0	0	0	0	0	0			
22	0	0	0	0	0	0		22	0	0	0	0	0	0			
23	0	0	0	0	0	0		23	0	0	0	0	0	0			
24	0	0	0	0	0	0		24	0	0	0	0	0	0			
25	0	0	0	0	0	0		25	0	0	0	0	0	0			
26	0	0	0	0	0	0		26	0	0	0	0	0	0			
27	0	0	0	0	0	0		27	0	0	0	0	0	0			
28	0	0	0	0	0	0		28	0	0	0	0	0	0			
29	0	0	0	0	0	0		29	0	0	0	0	0	0			
30	0	0	0	0	0	0		30	0	0	0	0	0	0			
Al	26	12	18	10	3	1		31	0	0	0	0	0	0			
l								All	0	0	0	0	0	0			
January, 1998								February, 1998									
	Segment								Segment								
	1	1A	1B	2	3	4		1	1A	1B	2	3	4				
day	0	0	0	0	0	0		day	0	0	0	2	0	0			
1								1									
2	0	0	0	0	0	2		2	0	0	0	0	0	0			
3	0	0	0	0	0	2		3	0	0	0	0	0	0			
4	0	0	0	0	0	0		4	0	0	0	0	0	0			

5	0	0	0	0	0	0	0	5	0	0	0	0	0	0
6	0	0	0	0	0	0	0	6	0	0	0	0	0	0
7	0	0	0	0	0	0	0	7	1	0	1	1	0	0
8	0	0	0	0	0	0	0	8	0	0	0	0	0	0
9	0	0	0	0	0	0	0	9	0	0	0	0	0	0
10	0	0	0	0	0	6	0	10	0	0	0	0	0	0
11	0	0	0	0	0	0	0	11	0	0	0	0	0	0
12	0	0	0	0	0	0	0	12	0	0	0	0	0	0
13	0	0	0	0	0	0	0	13	0	0	0	0	0	0
14	0	0	0	0	0	0	0	14	1	0	1	1	2	2
15	0	0	0	0	0	0	0	15	0	0	0	0	4	5
16	0	0	0	0	0	0	0	16	0	0	0	0	0	0
17	0	0	0	0	0	4	0	17	0	0	0	0	0	0
18	0	0	0	0	0	4	0	18	0	0	0	0	0	0
19	0	0	0	0	0	4	0	19	0	0	0	0	0	0
20	0	0	0	0	0	0	0	20	0	0	0	0	1	0
21	0	0	0	0	0	0	0	21	0	0	0	0	4	0
22	0	0	0	0	0	0	0	22	0	0	0	0	2	0
23	0	0	0	0	0	0	0	23	0	0	0	0	0	0
24	0	0	0	0	0	0	0	24	0	0	0	0	0	0
25	0	0	0	0	4	0	0	25	0	0	0	1	0	0
26	0	0	0	0	0	0	0	26	0	0	0	0	0	0
27	0	0	0	0	0	0	0	27	0	0	0	4	0	0
28	0	0	0	0	0	0	0	28	0	0	0	0	4	0
29	0	0	0	0	0	0	0	All	2	0	2	9	17	7
30	0	0	0	0	0	0	0							
31	0	0	0	0	0	0	0							
All	0	0	0	0	4	22	0							
March							April,							
, 1998							1998							
	Segment							Segment						
	1	1A	1B	2	3	4		1	1A	1B	2	3	4	
day	0	0	0	0	1	1		day	0	0	0	0	0	0
1								1						
2	0	0	0	0	0	0		2	2	2	0	0	0	0
3	0	0	0	0	0	0		3	0	0	0	0	0	0
4	4	4	4	0	0	0		4	4	0	4	32	5	0
5	4	0	4	1	0	0		5	23	19	4	25	2	2
6	4	0	4	8	4	0		6	23	23	23	2	5	0

									0	2		9		
7	58	28	30	23	21	4		7	235	11	12	322	44	9
									6	8				
8	45	20	25	51	20	14		8	153	10	10	75	38	5
									0	3				
9	77	46	38	91	16	11		9	166	46	12	60	0	6
					4					6				
10	55	26	28	45	58	8		10	179	82	13	58	0	5
										0				
11	31	25	20	77	53	7		11	257	12	15	225	14	33
										0	3			
12	36	12	27	11	13	0		12	237	11	13	145	64	74
										6	6			
13	40	9	32	75	40	4		13	337	17	20	441	63	12
										9	0			1
14	83	55	69	23	9	4		14	318	16	19	414	45	10
										1	4			6
15	111	28	92	62	46	9		15	223	10	13	242	14	7
										8	0			
16	179	66	116	221	30	12		16	253	12	17	212	77	46
										3	0			
17	138	52	98	140	58	11		17	264	16	20	172	44	52
										1	0			
18	108	59	71	71	20	6		18	290	88	23	212	19	40
										5				
19	148	68	109	31	81	2		19	345	12	29	293	10	47
										6	8			1
20	149	49	134	52	30	2		20	447	16	34	690	13	60
										2	9			9
21	126	37	106	34	25	15		21	385	10	32	630	38	68
										1	8			2
22	151	63	111	92	82	56		22	257	12	18	235	39	24
										0	4			
23	349	203	282	337	13	11		23	200	95	16	455	33	11
					3	6					4			
24	366	60	306	525	40	12		24	185	59	14	353	21	19
						3				7				
25	186	34	154	191	19	91		25	235	64	17	333	9	55
										9				
26	72	28	58	45	19	8		26	304	13	23	612	78	57
										9	2			
27	113	49	84	78	17	24		27	295	11	22	914	23	17
										7	8			4
28	170	58	129	49	7	14		28	287	83	20	841	46	14
										9				7

29	235	90	174	56	6	12		29	127	59	10	184	70	11
											4			
30	213	71	147	84	33	4		30	149	63	96	191	26	9
31	184	94	95	149	26	4		All	676	##	##	###	##	##
									4					
Al	###	149	###	301	##	59								
l		1		8		2								
July, 1998								August, 1998						
	Segment								Segment					
	1	1A	1B	2	3	4		1	1A	1B	2	3	4	
day	156	70	126	385	53	40		day	781	25	72	###	25	23
										3	9		1	5
1								1						
2	190	113	153	322	36	25		2	845	21	74	182	18	25
										0	0	0	0	5
3	336	109	290	911	20	11		3	437	23	39	729	57	78
					6	3				4	4			
4	320	32	293	121	15	13		4	541	16	46	772	94	14
				6	2	4				1	7			9
5	344	134	275	611	38	12		5	458	11	40	639	10	17
						1				9	4		1	5
6	293	172	224	298	51	30		6	349	12	27	700	17	19
										7	9		7	9
7	307	127	273	307	71	23		7	459	23	42	113	23	15
										5	0	9	7	2
8	332	72	280	404	57	25		8	650	23	62	###	36	26
										7	4		8	4
9	243	49	228	440	77	43		9	717	85	67	172	26	24
											9	7	1	7
10	415	128	395	605	15	72		10	516	21	41	767	14	18
					2					1	0		1	0
11	569	187	529	190	26	16		11	384	10	36	758	12	17
				6	4	4				7	0		1	2
12	507	135	446	864	92	12		12	368	66	31	915	10	15
					4						8		2	5
13	328	154	250	314	26	14		13	330	12	29	747	25	19
										1	6		8	1
14	346	100	322	456	55	20		14	468	19	41	141	27	29
										6	9	3	0	0
15	376	85	340	436	66	43		15	877	37	80	###	30	30
										9	5		6	5

16	391	108	349	459	10	98		16	824	11	77	185	19	31		
					4					6	5	5	0	5		
17	498	162	437	639	14	12		17	464	15	41	854	46	10		
					0	8				6	9			9		
18	773	276	659	###	22	14		18	339	98	30	820	97	12		
					2	8					5			6		
19	639	148	556	145	11	11		19	283	50	26	867	17	15		
				7	5	0					0		5	2		
20	362	160	288	384	77	84		20	267	11	20	679	24	21		
										0	0		2	7		
21	410	160	318	500	63	78		21	408	21	34	920	30	34		
										9	0		2	9		
22	513	167	458	615	51	66		22	675	21	62	###	39	41		
										5	7		7	6		
23	403	57	371	613	10	95		23	555	72	50	164	30	35		
					4						0	9	7	2		
24	456	90	432	113	18	12		24	134	28	11	576	11	13		
				6	6	7					5		0	5		
25	747	400	688	###	26	13		25	69	20	64	456	10	13		
					8	3							9	0		
26	745	111	704	###	15	16		26	88	24	68	390	76	10		
					4	2								3		
27	449	134	410	767	96	96		27	119	37	96	280	19	16		
													0	5		
28	318	74	269	410	74	89		28	321	15	27	701	17	26		
										9	6		7	7		
29	410	162	363	567	10	79		29	585	28	48	212	36	30		
					8					3	8	1	2	0		
30	318	56	292	730	10	10		30	504	94	45	119	13	27		
					6	4					5	3	8	0		
31	436	175	366	114	12	13		31	155	7	15	363	88	13		
				2	8	3					3			0		
All	###	410	###	###	##	##		All	###	##	##	###	##	##		
l		7														
September, 1998							October, 1998									
	Segment							Segment								
	1	1A	1B	2	3	4		1	1A	1B	2	3	4			
day	69	21	52	189	27	14		day	56	26	37	23	26	83		
						9										
1								1								
2	31	13	18	121	45	15		2	102	32	84	34	21	12		

						6								9
3	37	30	11	173	40	160		3	103	24	82	143	53	139
4	104	63	88	339	173	326		4	94	14	79	78	51	127
5	600	305	567	1417	375	580		5	82	45	46	27	20	72
6	603	64	561	1513	197	468		6	68	24	46	19	12	51
7	503	47	464	1017	104	279		7	68	24	45	26	9	47
8	70	17	60	132	18	70		8	87	44	52	40	14	51
9	83	13	70	71	31	49		9	101	49	58	47	13	65
10	103	21	90	142	64	108		10	136	55	97	141	30	115
11	111	30	100	155	84	202		11	139	36	116	106	27	109
12	283	109	248	1643	166	235		12	95	33	69	32	11	36
13	274	36	250	941	117	190		13	84	36	49	23	12	34
14	129	38	107	174	24	90		14	59	32	33	18	9	38
15	102	41	74	113	9	135		15	49	23	28	13	19	31
16	97	24	74	64	23	101		16	102	68	50	12	30	75
17	104	33	83	140	15	88		17	115	64	59	34	70	136
18	119	46	89	177	55	130		18	90	41	55	51	60	106
19	190	47	152	893	120	222		19	72	38	41	27	17	70
20	189	62	151	497	74	219		20	59	37	30	11	12	40
21	79	21	64	52	9	46		21	41	18	27	11	20	43
22	72	18	58	19	21	68		22	43	20	23	20	12	23
23	96	46	57	39	11	32		23	72	50	33	6	24	74
24	84	31	55	45	28	36		24	83	47	36	12	9	65
25	95	47	47	68	52	75		25	78	49	33	57	21	59
26	90	53	56	601	74	119		26	31	19	12	4	8	13
27	83	26	57	251	31	119		27	32	24	8	0	17	7
28	47	23	26	19	17	71		28	34	25	14	7	8	4
29	37	17	21	101	28	70		29	30	23	13	0	5	6

30	31	11	21	18	36	81		30	51	38	14	6	5	15
Al	451	135	377	111	##	##		31	37	25	12	27	17	14
l	5	3	1	24				All	229	##	13	105	66	##
									3	81	5	2		
November, 1998							December, 1998							
	Segment								Segment					
	1	1A	1B	2	3	4		1	1A	1B	2	3	4	
day	18	8	9	37	13	11		day	0	0				
1								1			0	0	0	0
2	0	0	0	27	7	6		2	0	0	0	0	0	0
3	2	1	1	5	7	5		3	0	0	0	0	0	0
4	8	7	1	0	9	4		4	1	1	0	0	0	0
5	8	7	1	1	14	4		5	0	0	0	0	0	0
6	7	7	0	2	2	8		6	0	0	0	0	0	0
7	24	17	7	12	12	11		7	0	0	0	0	0	0
8	8	6	2	5	7	6		8	0	0	0	0	0	0
9	9	4	6	4	5	0		9	1	1	0	0	0	0
10	4	1	2	0	0	0		10	1	1	0	0	0	0
11	11	5	6	6	0	1		11	0	0	0	0	0	0
12	2	2	0	0	0	0		12	0	0	0	0	0	0
13	0	0	0	2	0	0		13	1	1	0	0	0	0
14	9	9	0	7	0	0		14	2	2	0	0	0	0
15	12	12	0	14	0	1		15	1	1	0	0	0	0
16	12	8	4	7	0	0		16	0	0	0	0	0	0
17	1	1	0	0	4	0		17	7	7	0	0	0	0
18	5	5	0	1	0	1		18	0	0	0	0	0	0
19	2	2	0	2	0	1		19	0	0	0	0	0	0
20	0	0	0	4	5	0		20	0	0	0	0	0	2
21	2	0	2	2	2	0		21	2	0	2	2	0	0
22	0	0	0	0	0	0		22	0	0	0	0	0	0
23	2	2	0	5	0	0		23	0	0	0	0	0	0
24	1	1	0	1	0	0		24	4	4	0	0	0	0
25	5	2	2	1	0	0		25	0	0	0	0	0	0
26	5	2	2	0	0	0		26	2	2	0	0	0	0
27	12	9	2	4	0	0		27	2	2	0	1	0	0
28	8	6	2	1	5	4		28	0	0	0	0	0	0
29	2	0	2	6	0	0		29	2	2	0	0	0	0
30	0	0	0	0	0	0		30	0	0	0	0	0	0

Al	17	12	51	15	92	63		31	0	0	0	0	0	0
l	9	4		6				All	26	24	2	3	0	2
January, 1999							February, 1999							
	Segment							Segment						
	1	1A	1B	2	3	4		1	1A	1B	2	3	4	
day	0	0	0	0	0	0		day	0	0				
1								1			0	0	0	0
2	0	0	0	0	0	2		2	0	0	0	0	0	0
3	0	0	0	0	0	0		3	0	0	0	0	0	0
4	0	0	0	0	0	0		4	0	0	0	0	0	0
5	0	0	0	0	0	0		5	0	0	0	0	0	0
6	0	0	0	0	0	0		6	0	0	0	0	0	0
7	0	0	0	0	0	1		7	0	0	0	0	0	0
8	0	0	0	3	0	0		8	0	0	0	2	0	0
9	0	0	0	0	0	3		9	0	0	0	0	0	0
10	0	0	0	0	0	0		10	0	0	0	0	0	0
11	0	0	0	2	0	0		11	0	0	0	0	0	0
12	0	0	0	0	0	0		12	0	0	0	0	0	0
13	0	0	0	2	0	0		13	0	0	0	0	0	5
14	0	0	0	0	0	0		14	0	0	0	0	0	0
15	0	0	0	0	0	0		15	0	0	0	3	0	0
16	0	0	0	0	0	0		16	0	0	0	1	0	0
17	0	0	0	0	0	0		17	0	0	0	1	2	0
18	0	0	0	0	0	0		18	0	0	0	0	0	0
19	0	0	0	0	0	0		19	0	0	0	0	0	0
20	0	0	0	0	0	0		20	0	0	0	0	0	2
21	0	0	0	3	0	0		21	0	0	0	0	0	0
22	0	0	0	0	0	0		22	0	0	0	0	0	0
23	0	0	0	0	0	0		23	0	0	0	0	0	0
24	0	0	0	0	0	0		24	0	0	0	0	0	0
25	0	0	0	0	0	0		25	0	0	0	0	0	0
26	0	0	0	0	0	0		26	0	0	0	0	0	0
27	0	0	0	0	0	0		27	0	0	0	0	0	2
28	0	0	0	0	0	0		28	0	0	0	0	0	0
29	0	0	0	0	0	0		All	0	0	0	7	2	9
30	0	0	0	0	1	0								
31	0	0	0	0	0	0								
Al	0	0	0	10	1	6								

March, 1999							April, 1999						
day	Segment						day	Segment					
	1	1A	1B	2	3	4		1	1A	1B	2	3	4
1	0	0	0	0	0	0	17	5					
2	0	0	0	0	0	0	17	0	17	5	5	0	
3	0	0	0	0	0	0	13	0	13	50	8	0	
4	0	0	0	0	0	0	0	0	0	35	7	0	
5	0	0	0	0	0	0	0	0	0	0	6	0	
6	0	0	0	0	0	0	0	0	0	0	3	0	
7	0	0	0	0	0	1	0	0	0	36	3	0	
8	0	0	0	0	0	0	0	0	0	0	8	0	
9	0	0	0	5	0	0	9	9	9	0	8	0	
10	0	0	0	0	0	0	9	0	9	10	0	0	
11	0	0	0	0	0	0	9	0	9	14	1	0	
12	0	0	0	0	0	0	0	0	0	0	1	0	
13	31	31	31	0	0	0	0	0	0	7	0	0	
14	31	0	31	31	0	0	6	6	6	7	9	0	
15	0	0	0	0	0	0	6	0	6	6	5	0	
16	0	0	0	0	0	0	3	3	0	0	12	0	
17	0	0	0	1	0	0	24	0	24	20	29	3	
18	0	0	0	0	1	0	22	0	22	41	15	2	
19	0	0	0	0	3	0	0	0	0	1	1	0	
20	15	15	15	0	8	2	0	0	0	0	0	0	
21	48	33	45	2	0	2	17	17	17	0	2	0	
22	45	0	45	2	0	0	17	0	17	3	1	0	
23	45	0	45	21	0	0	29	9	22	7	1	0	
24	30	0	30	3	0	0	75	41	34	77	22	6	
25	31	1	31	15	0	0	63	22	41	14	43	12	
26	36	5	36	1	0	0	22	10	12	8	21	0	
27	48	7	48	31	5	0	5	1	3	8	0	0	
28	16	0	16	7	2	0	7	7	0	5	2	0	
29	12	0	12	12	6	0	8	8	0	10	3	0	
30	13	13	13	0	0	0	37	36	6	6	22	0	
31	13	0	13	0	0	0	All	415	17	28	49	23	
AI	41	10	41	13	25	5				4	9	8	

1	4	5	1	1											
May, 1999								June, 1999							
	Segment							Segment							
	1	1A	1B	2	3	4		1	1A	1B	2	3	4		
day	47	34	13	65	12	8	day	132	43	10	42	20	2		
1					2		1			4					
2	34	27	7	59	0	5	2	193	84	15	73	2	0		
3	6	6	0	5	45	0	3	258	86	19	49	21	0		
4	3	3	0	0	0	2	4	304	10	21	143	23	0		
5	3	3	0	2	0	3	5	354	17	21	280	83	17		
6	16	16	0	8	17	0	6	268	11	15	153	43	12		
7	33	27	12	21	19	0	7	175	82	11	30	1	3		
8	43	31	14	52	13	13	8	183	70	12	79	5	0		
9	40	29	10	21	2	15	9	186	99	12	64	5	0		
10	31	24	16	0	0	1	10	191	10	11	106	7	0		
11	21	5	16	0	0	0	11	246	14	17	148	9	3		
12	37	20	19	10	0	0	12	327	17	23	458	47	8		
13	38	16	29	2	6	0	13	276	14	15	357	30	9		
14	79	34	64	48	13	5	14	197	11	10	139	13	5		
15	99	34	70	108	93	1	15	181	91	10	155	57	33		
16	106	57	58	80	6	1	16	178	96	11	269	24	29		
17	37	21	16	47	2	1	17	281	16	15	183	38	35		
18	38	22	21	3	48	3	18	307	15	22	283	35	31		

					1				2	9		5	4	
6	211	118	176	193	17	26		6	597	14	56	124	26	14
										6	4	0	8	9
7	275	103	190	428	59	19		7	745	27	70	211	21	16
										9	3	3	1	5
8	241	76	195	540	37	27		8	790	13	74	164	10	17
										3	4	4	1	2
9	339	165	265	537	93	72		9	449	19	38	733	19	14
										1	8		6	9
10	432	192	371	187	18	92		10	364	98	30	980	14	17
				6	9						1		6	6
11	505	183	434	100	38	73		11	343	66	30	548	18	16
				9							3		4	9
12	361	101	310	385	97	17		12	359	11	31	794	13	14
										0	1		5	5
13	332	101	295	277	51	23		13	438	13	40	125	20	21
										9	8	6	7	1
14	316	80	261	425	10	50		14	723	32	70	###	30	35
					6					3	0		3	1
15	325	119	280	549	12	70		15	700	99	65	182	23	24
					6						7	6	9	7
16	289	113	248	637	25	12		16	355	13	30	718	12	15
					4	7				2	3		1	8
17	549	200	531	192	25	16		17	332	12	27	781	16	14
				4	6	2				4	2		5	9
18	530	107	466	137	92	13		18	300	10	28	622	68	11
				6		5				5	7			7
19	298	150	276	485	12	79		19	295	73	24	956	19	14
					7						6		1	0
20	352	111	305	533	55	64		20	495	21	44	107	23	25
										1	9	7	8	5
21	332	58	302	396	70	54		21	724	26	65	###	42	33
										3	8		1	4
22	359	85	320	725	13	38		22	756	15	70	184	24	30
					8					2	4	9	2	8
23	409	154	366	700	16	97		23	300	73	26	441	72	13
					0						7			6
24	621	256	555	219	24	14		24	249	70	23	533	14	15
				2	2	3					7		5	7
25	627	141	524	164	15	13		25	181	23	16	513	97	16
				1	7	8					9			5
26	259	106	216	674	12	56		26	168	26	16	612	14	11
					8						3		3	1
27	235	100	206	411	10	12		27	388	24	35	733	22	21
					8	2				1	1		8	8

28	286	124	246	615	29	14		28	584	22	52	###	37	32			
						0				8	1		9	4			
29	409	132	371	752	15	78		29	523	54	48	156	18	29			
						2					1	6	9	8			
30	452	171	420	964	21	14		30	97	12	89	220	71	97			
						8											
31	615	189	538	251	32	16		31	61	26	49	174	69	79			
						5											
All	###	###	###	###	##	##		All	138	##	##	###	##	##			
l									91								
September, 1999								October, 1999									
	Segment								Segment								
	1	1A	1B	2	3	4			1	1A	1B	2	3	4			
day	28	10	21	141	64	90		day	72	27							
1								1			56	36	50	13			
2	41	19	30	354	10	10		2	76	14	62	19	56	12			
						1						7		4			
3	68	30	57	326	10	17		3	94	36	63	91	65	12			
						3								9			
4	425	294	417	137	42	31		4	54	15	38	80	43	70			
						6											
5	503	104	441	147	26	30		5	47	10	43	29	19	45			
						5											
6	326	24	307	858	15	23		6	56	12	47	13	13	26			
						0											
7	41	10	30	117	15	83		7	56	13	45	40	14	38			
8	23	19	5	119	33	93		8	91	47	64	50	23	82			
9	44	3	41	82	38	70		9	148	89	59	85	37	85			
10	163	92	139	198	77	99		10	104	58	48	99	49	79			
11	297	58	280	156	24	16		11	50	33	26	17	20	54			
						4											
12	287	55	254	932	76	13		12	50	26	34	12	17	41			
						6											
13	68	8	59	174	54	12		13	51	20	33	5	13	35			
						2											
14	59	24	38	66	28	10		14	58	30	29	22	24	33			
						6											
15	34	10	30	63	41	11		15	61	41	20	19	27	36			
						5											

16	48	13	42	155	23	10	8	16	91	73	20	51	37	69			
17	91	21	80	197	75	14	5	17	82	57	26	79	20	87			
18	182	94	167	872	18	18	26	18	59	38	34	13	15	45			
19	174	38	148	573	11	18	45	19	42	16	26	12	15	33			
20	64	14	50	61	33	92		20	50	24	26	2	13	21			
21	61	21	40	44	10	78		21	48	24	23	17	13	27			
22	33	15	17	41	21	93		22	64	49	19	6	16	23			
23	16	8	8	37	47	10	3	23	76	40	40	52	22	30			
24	45	27	38	30	37	12	2	24	79	57	22	30	21	30			
25	83	36	58	600	96	15	0	25	33	20	13	9	7	10			
26	69	8	66	291	51	13	3	26	15	8	7	7	10	7			
27	37	12	26	30	44	65		27	19	8	13	6	12	10			
28	37	10	27	12	16	90		28	29	14	20	22	12	6			
29	42	10	37	12	22	87		29	36	15	21	6	8	9			
30	72	21	51	40	30	87		30	35	16	19	16	8	5			
All	346	110	###	###	##	##		31	17	10	7	9	7	0			
l	1	8						All	184	94	##	11	70	##			
									3	0		32	6				
November, 1999							December, 1999										
	Segment									Segment							
	1	1A	1B	2	3	4			1	1A	1B	2	3	4			
day	2	2	0	0	0	2		day	2	2							
1								1			0	1	0	0			
2	1	1	0	0	0	2		2	0	0	0	0	0	0			
3	10	7	3	0	7	8		3	0	0	0	0	0	0			
4	5	1	3	1	1	0		4	0	0	0	2	0	0			
5	9	6	3	3	7	5		5	9	9	0	2	0	0			
6	6	5	1	3	5	0		6	0	0	0	0	0	0			
7	15	14	1	1	0	0		7	0	0	0	0	0	0			
8	2	2	0	0	0	0		8	2	2	0	0	0	0			
9	8	8	0	0	0	0		9	3	3	0	0	0	0			

10	3	3	0	3	0	0		10	1	1	0	0	0	0			
11	7	7	0	0	0	0		11	7	7	0	2	0	0			
12	14	14	0	7	0	0		12	5	5	0	0	0	0			
13	6	3	2	2	3	0		13	2	2	0	0	0	0			
14	13	10	2	17	7	0		14	0	0	0	0	0	0			
15	3	3	0	2	3	0		15	0	0	0	0	0	0			
16	7	7	0	0	0	0		16	6	6	0	0	0	0			
17	2	2	0	0	0	0		17	0	0	0	1	0	0			
18	0	0	0	1	0	1		18	0	0	0	0	0	0			
19	3	3	0	0	0	5		19	3	3	0	0	0	0			
20	9	9	0	1	0	5		20	3	3	0	2	0	0			
21	6	6	0	0	0	5		21	2	2	0	0	0	0			
22	5	5	0	2	0	0		22	3	3	0	0	0	0			
23	5	5	0	0	2	0		23	8	7	1	1	0	0			
24	2	2	0	0	2	0		24	0	0	0	0	0	0			
25	7	5	7	0	0	0		25	0	0	0	0	0	0			
26	10	3	7	1	5	0		26	3	3	0	1	0	0			
27	7	0	7	1	1	5		27	0	0	0	1	0	0			
28	7	0	7	8	0	0		28	3	3	0	0	0	0			
29	0	0	0	0	0	0		29	5	5	0	0	1	0			
30	0	0	0	0	0	0		30	8	8	0	0	2	0			
Al l	17 4	13 3	43	53	43	38		31	3	3	0	0	0	0			
								All	78	77	1	13	3	0			
January, 2000								Februar y, 2000									
	Segmen t								Segmen t								
	1	1A	1B	2	3	4		1	1A	1B	2	3	4				
da y	8	8	0	0	0	0		day	0	0	0	0	0	0			
1								1									
2	0	0	0	0	0	0		2	0	0	0	0	0	0			
3	0	0	0	0	0	0		3	0	0	0	2	2	0			
4	0	0	0	0	0	0		4	0	0	0	0	0	0			
5	0	0	0	0	0	0		5	0	0	0	3	1	0			
6	0	0	0	0	0	0		6	0	0	0	0	2	0			
7	0	0	0	0	0	0		7	0	0	0	0	0	0			
8	0	0	0	0	0	0		8	0	0	0	0	0	0			
9	0	0	0	0	0	0		9	0	0	0	0	0	0			
10	0	0	0	0	0	0		10	0	0	0	0	0	0			
11	0	0	0	0	0	0		11	0	0	0	0	0	0			

12	0	0	0	0	0	0		12	0	0	0	2	5	0
13	0	0	0	3	0	0		13	0	0	0	0	0	0
14	0	0	0	0	0	0		14	0	0	0	0	0	0
15	0	0	0	0	0	0		15	0	0	0	0	0	0
16	0	0	0	0	0	0		16	0	0	0	0	0	0
17	0	0	0	0	0	0		17	0	0	0	1	0	0
18	0	0	0	0	0	0		18	0	0	0	0	0	0
19	0	0	0	0	0	0		19	0	0	0	5	0	0
20	0	0	0	0	0	0		20	0	0	0	2	0	0
21	0	0	0	0	0	0		21	0	0	0	0	0	0
22	0	0	0	0	0	0		22	0	0	0	0	0	0
23	0	0	0	5	5	0		23	0	0	0	0	0	0
24	0	0	0	0	0	0		24	0	0	0	0	0	0
25	0	0	0	0	0	0		25	0	0	0	0	0	0
26	0	0	0	0	0	0		26	0	0	0	0	0	0
27	0	0	0	0	0	0		27	0	0	0	0	0	0
28	0	0	0	0	0	0		28	0	0	0	0	0	0
29	0	0	0	5	0	0		29	0	0	0	0	3	0
30	0	0	0	3	0	0		All	0	0	0	15	13	0
31	0	0	0	0	0	0								
Al l	8	8	0	16	5	0								
March, 2000							April, 2000							
	Segmen t							Segmen t						
	1	1A	1B	2	3	4		1	1A	1B	2	3	4	
da y	0	0	0	0	0	0		day	10	3	7	47	33	0
1								1						
2	0	0	0	0	0	0		2	9	0	9	42	28	0
3	14	14	14	0	0	0		3	21	18	21	2	8	0
4	22	0	22	0	2	0		4	35	16	35	0	6	0
5	22	0	22	8	3	0		5	35	0	35	0	2	0
6	14	0	14	0	0	0		6	36	0	36	17	0	3
7	14	0	14	14	0	0		7	18	0	18	29	21	15
8	0	0	0	0	0	0		8	30	5	30	9	21	8
9	0	0	0	0	0	0		9	25	0	25	30	9	9
10	0	0	0	0	0	0		10	7	2	5	5	7	1
11	0	0	0	0	0	0		11	5	2	2	0	2	0
12	0	0	0	0	0	0		12	5	2	2	2	0	0
13	0	0	0	0	0	0		13	0	0	0	0	0	0

										2				
9	23	14	13	10	6	0		9	273	15	13	117	29	18
										2	9			
10	22	7	15	0	2	0		10	267	12	17	333	12	12
										6	0		8	
11	39	17	27	9	5	0		11	254	11	14	161	25	18
										4	9			
12	84	47	66	16	8	0		12	188	84	11	137	44	18
											6			
13	113	38	79	55	6	7		13	226	13	10	110	35	5
										4	7			
14	87	40	61	60	9	3		14	192	92	11	166	36	0
											6			
15	53	22	31	64	0	0		15	221	12	11	211	31	0
										7	3			
16	60	31	35	15	1	1		16	289	16	21	454	85	52
										9	8			
17	58	25	32	42	5	1		17	380	20	24	702	11	12
										7	1		8	5
18	92	52	45	31	21	10		18	313	85	26	427	53	13
											2			4
19	159	69	117	66	31	3		19	291	16	19	230	28	58
										6	5			
20	219	117	129	156	60	17		20	322	13	23	278	6	24
										5	3			
21	232	81	155	237	73	37		21	337	77	30	187	31	31
											0			
22	102	40	64	46	9	7		22	370	82	30	702	35	38
											4			
23	95	40	65	14	9	0		23	240	11	17	331	12	11
										6	8		9	0
24	88	29	68	155	10	0		24	310	13	22	820	50	11
										1	4			0
25	103	45	72	40	3	0		25	278	88	21	635	55	76
											7			
26	128	64	97	77	53	44		26	217	92	16	202	46	30
											2			
27	365	204	297	431	83	11		27	253	80	21	390	10	15
						9					8			
28	357	75	289	579	42	12		28	188	36	16	356	60	28
						2					5			
29	236	46	195	262	23	77		29	189	54	15	401	10	21
											0		5	
30	62	13	50	105	8	6		30	206	55	16	455	83	46
											7			

31	132	74	98	53	6	3		All	753	##	##	913	##	##
									1			4		
Al	###	138	226	###	52	49								
l		3	1		5	0								
July, 2000								August, 2000						
	Segmen								Segmen					
	t							t						
	1	1A	1B	2	3	4		1	1A	1B	2	3	4	
day	448	266	401	100	14	97		day	357	19	32	565	11	94
				9	7					1	2		1	
1								1						
2	571	156	485	904	81	12		2	370	76	34	884	13	10
						4					2		7	7
3	513	165	408	828	11	76		3	413	15	36	776	24	17
					3					9	2		0	1
4	288	55	264	485	35	46		4	568	20	51	114	22	24
										7	4	3	8	0
5	255	51	231	222	54	29		5	703	23	62	###	32	32
										0	3		2	1
6	340	109	274	511	54	40		6	765	18	68	175	16	29
										7	5	3	3	0
7	323	90	304	590	10	10		7	438	12	37	812	73	15
					2	0				9	3			6
8	281	89	260	146	21	19		8	440	12	41	813	14	12
				6	5	9				9	5		0	7
9	314	73	275	710	11	14		9	498	11	45	747	16	12
					6	0				4	7		1	4
10	263	134	215	439	92	21		10	484	10	42	870	26	17
										9	6		3	9
11	336	114	292	342	79	29		11	508	17	49	126	28	27
										7	1	8	0	3
12	362	72	336	462	88	54		12	818	31	75	291	22	24
										3	5	2	8	5
13	351	81	315	534	11	59		13	800	11	77	###	18	23
					1					1	7		1	1
14	511	149	470	955	25	12		14	484	12	43	101	19	15
					2	4				5	7	5	5	7
15	620	210	553	###	22	16		15	434	12	39	708	12	15
					9	5				8	5		0	0
16	617	148	536	136	10	13		16	375	88	31	842	12	14
				1	0	1					3		4	7
17	258	37	243	486	12	92		17	342	96	31	775	13	22

4	232	8	224	602	98	22		4	67	40	38	21	18	27
						9								
5	37	7	32	57	33	80		5	65	29	40	23	13	27
6	17	10	10	32	50	11		6	87	46	47	39	46	58
						8								
7	35	24	20	65	42	92		7	119	81	52	66	43	77
8	104	75	81	159	88	14		8	89	51	52	60	33	68
						8								
9	276	90	241	107	17	18		9	62	31	36	21	18	38
				1	4	7								
10	214	54	186	733	12	15		10	54	30	29	7	7	27
					0	6								
11	87	30	77	170	28	12		11	57	25	33	12	10	22
						4								
12	105	30	79	96	25	11		12	53	27	27	24	14	22
						2								
13	76	35	45	105	58	13		13	59	36	28	42	31	42
						3								
14	85	47	47	191	58	15		14	84	64	44	38	44	30
						1								
15	124	80	90	280	81	17		15	106	53	53	84	21	30
						3								
16	246	102	206	954	20	17		16	88	53	43	36	6	13
					6	6								
17	276	44	248	672	89	21		17	79	51	42	23	8	25
						0								
18	94	17	81	89	29	11		18	43	23	25	7	10	17
						1								
19	54	16	39	151	67	13		19	46	27	20	14	10	12
						4								
20	29	8	21	27	31	13		20	39	24	27	16	29	35
						1								
21	62	22	45	25	31	91		21	69	40	29	21	28	36
22	103	25	77	76	54	10		22	70	39	37	36	28	23
						4								
23	107	37	74	633	84	12		23	62	31	31	17	10	7
						0								
24	60	8	59	308	77	11		24	44	18	29	8	12	10
						7								
25	47	9	39	28	21	10		25	47	24	28	9	9	8
						2								
26	42	16	32	53	28	11		26	55	25	33	21	15	13
						0								
27	44	13	33	47	37	13		27	80	53	45	9	13	14
						2								

28	55	23	38	54	29	13	5	28	81	35	52	16	13	22
29	85	38	61	28	55	20	0	29	77	32	45	31	20	18
30	128	43	90	142	55	19	4	30	33	9	24	24	2	3
All	###	128	###	###	##	##		31	20	20	0	7	0	0
		0						All	199	##	11	927	69	##
									2		02		4	
November, 2000							December, 2000							
Segment							Segment							
t							t							
1 1A 1B 2 3 4							1 1A 1B 2 3 4							
day	3	3	1	1	2	5	day	0	0	0	0	0	0	0
1							1							
2	14	9	5	16	0	0	2	0	0	0	0	9	0	
3	20	15	5	5	13	0	3	2	2	0	5	2	0	
4	6	3	2	6	1	1	4	1	1	0	0	0	0	
5	7	2	5	2	5	5	5	2	2	0	2	0	0	
6	14	5	9	0	2	1	6	0	0	0	0	0	0	
7	15	5	10	9	2	1	7	2	2	0	0	0	0	
8	5	3	1	0	0	1	8	6	6	0	0	0	0	
9	14	13	1	3	0	6	9	0	0	0	0	0	0	
10	5	3	1	2	3	1	10	1	1	0	0	0	0	
11	13	12	1	8	6	3	11	0	0	0	0	0	0	
12	7	7	0	5	0	0	12	0	0	0	0	0	0	
13	1	1	0	5	0	0	13	0	0	0	0	0	0	
14	2	2	0	0	0	0	14	0	0	0	0	0	0	
15	2	2	0	0	0	0	15	0	0	0	0	0	0	
16	1	0	1	1	0	0	16	1	1	0	0	0	0	
17	7	5	2	0	0	0	17	0	0	0	0	0	0	
18	8	6	2	0	0	0	18	0	0	0	0	0	0	
19	12	7	5	6	0	0	19	1	1	0	0	0	0	
20	7	5	2	5	0	1	20	1	0	1	1	0	0	
21	12	12	0	0	2	1	21	0	0	0	0	1	1	
22	5	2	2	0	2	1	22	0	0	0	0	0	0	
23	0	0	0	0	0	0	23	0	0	0	0	0	0	
24	13	12	1	1	0	0	24	0	0	0	0	0	0	
25	12	12	0	0	0	1	25	0	0	0	0	0	0	

26	1	1	0	0	0	2		26	6	6	0	0	5	0	
27	2	2	0	0	0	2		27	0	0	0	0	1	0	
28	2	2	0	0	0	0		28	2	2	0	1	0	0	
29	5	5	0	0	0	0		29	8	8	0	2	0	0	
30	3	3	0	1	0	0		30	9	9	0	3	2	3	
Al	218	159	56	76	38	32		31	0	0	0	0	0	0	
l								All	42	41	1	14	20	4	
January, 2001								February, 2001							
	Segment								Segment						
	1	1A	1B	2	3	4		1	1A	1B	2	3	4		
day	0	0	0	0	0	0		day	0	0					
1								1			0	0	0	0	
2	0	0	0	0	0	0		2	0	0	0	0	0	0	
3	0	0	0	0	0	0		3	0	0	0	0	1	0	
4	0	0	0	0	0	0		4	0	0	0	2	4	4	
5	0	0	0	0	0	0		5	0	0	0	0	0	0	
6	0	0	0	0	0	0		6	0	0	0	0	0	0	
7	0	0	0	0	0	0		7	0	0	0	0	0	0	
8	0	0	0	0	0	0		8	0	0	0	0	0	0	
9	0	0	0	0	0	0		9	0	0	0	0	0	0	
10	0	0	0	0	0	0		10	0	0	0	0	0	0	
11	0	0	0	0	0	0		11	0	0	0	0	0	0	
12	0	0	0	2	0	0		12	0	0	0	0	0	0	
13	0	0	0	0	0	1		13	0	0	0	0	0	0	
14	0	0	0	4	0	1		14	0	0	0	0	0	0	
15	0	0	0	0	1	0		15	0	0	0	0	0	0	
16	1	0	1	1	0	0		16	0	0	0	0	0	0	
17	0	0	0	0	0	0		17	0	0	0	0	1	0	
18	0	0	0	0	0	0		18	0	0	0	0	1	0	
19	0	0	0	0	0	0		19	0	0	0	0	0	0	
20	0	0	0	0	1	0		20	0	0	0	0	0	0	
21	0	0	0	0	0	0		21	0	0	0	2	0	0	
22	0	0	0	0	0	0		22	0	0	0	2	0	0	
23	0	0	0	0	0	0		23	0	0	0	0	0	0	
24	0	0	0	0	0	0		24	0	0	0	0	0	0	
25	0	0	0	0	0	0		25	0	0	0	0	0	0	
26	5	0	5	0	0	0		26	0	0	0	0	0	0	
27	5	0	5	0	0	0		27	0	0	0	0	0	0	

28	5	0	5	5	0	0		28	0	0	0	0	0	0
29	0	0	0	0	0	0		All	0	0	0	6	7	4
30	0	0	0	0	0	0								
31	0	0	0	0	0	0								
All	16	0	16	12	2	2								
March, 2001								April, 2001						
	Segment								Segment					
	1	1A	1B	2	3	4		1	1A	1B	2	3	4	
day	0	0	0	0	0	0		day	0	0	0	20	0	1
1								1						
2	0	0	0	0	0	0		2	34	34	34	5	13	0
3	0	0	0	5	0	0		3	34	0	34	16	0	0
4	0	0	0	0	5	7		4	34	0	34	6	0	0
5	0	0	0	0	0	0		5	34	0	34	12	0	0
6	0	0	0	0	0	0		6	34	0	34	53	0	0
7	0	0	0	0	0	0		7	20	6	20	12	4	0
8	0	0	0	1	0	0		8	20	0	20	20	0	0
9	5	5	0	1	0	0		9	0	0	0	1	1	0
10	24	9	24	2	4	0		10	0	0	0	7	0	0
11	24	0	24	26	5	1		11	0	0	0	0	0	0
12	0	0	0	0	5	0		12	0	0	0	0	0	0
13	9	0	9	0	0	0		13	2	0	2	31	0	4
14	9	0	9	0	0	0		14	0	0	0	55	22	9
15	16	7	16	9	0	0		15	0	0	0	56	4	11
16	7	0	7	9	0	0		16	0	0	0	26	0	2
17	0	0	0	11	5	0		17	1	1	0	14	2	2
18	0	0	0	9	5	0		18	1	1	0	42	6	7
19	0	0	0	0	0	0		19	6	6	6	14	0	0
20	0	0	0	0	0	1		20	7	1	7	36	6	9
21	0	0	0	0	0	1		21	11	4	11	84	7	21
22	0	0	0	0	0	0		22	15	7	13	66	11	15
23	0	0	0	6	1	0		23	0	0	0	0	0	7
24	7	0	7	38	5	2		24	2	0	2	0	0	6
25	7	0	7	8	1	2		25	15	13	13	7	0	1
26	2	0	2	49	0	0		26	14	0	14	0	7	2
27	0	0	0	12	1	1		27	38	12	26	2	7	4
28	0	0	0	0	4	6		28	104	75	38	31	12	5
29	0	0	0	0	0	0		29	85	49	35	106	13	8

30	4	0	4	5	0	1		30	16	13	8	6	32	6
31	4	0	4	25	9	1		All	527	22	38	728	14	12
Al	118	21	113	216	50	23								
l														
May, 2001								June, 2001						
	Segment								Segment					
	1	1A	1B	2	3	4			1	1A	1B	2	3	4
day	20	13	7	2	0	8		day	323	93	24	132	26	20
y								y			9			
1								1						
2	15	6	9	7	2	0		2	262	11	16	378	78	45
3	19	12	11	9	4	2		3	306	15	19	443	51	48
4	61	28	38	11	6	4		4	191	89	10	46	9	20
5	115	52	65	129	11	15		5	199	10	10	54	2	5
6	96	41	55	139	16	26		6	238	15	12	44	11	11
7	35	7	28	27	41	6		7	291	14	17	104	12	1
8	42	13	33	14	9	2		8	313	14	20	143	32	11
9	56	25	35	36	8	0		9	320	15	20	414	34	14
10	60	40	31	4	8	0		10	343	14	21	273	60	15
11	75	41	45	28	16	13		11	172	52	13	216	61	19
12	99	42	56	98	26	16		12	279	96	20	64	14	27
13	114	39	75	65	9	15		13	260	68	20	222	39	18
14	74	33	60	25	9	14		14	206	10	12	128	56	39
15	64	12	52	34	5	8		15	331	20	23	222	36	58
16	40	20	20	62	4	6		16	398	18	27	514	53	72

17	67	42	25	46	31	22		17	375	12	30	446	41	66
18	113	78	55	53	48	28		18	299	15	20	143	91	68
19	183	105	81	174	40	40		19	316	11	24	181	14	75
20	162	78	91	165	71	39		20	353	14	25	320	22	44
21	67	13	56	112	29	11		21	307	10	24	429	51	22
22	88	34	68	52	13	6		22	248	11	19	326	82	76
23	108	46	62	152	8	5		23	385	14	28	856	10	89
24	81	41	54	81	13	7		24	388	11	34	500	10	11
25	183	108	134	139	25	9		25	226	73	19	148	29	91
26	495	312	332	853	19	17		26	316	98	30	307	24	69
27	459	145	341	874	10	22		27	340	98	28	248	56	84
28	362	93	279	567	26	15		28	342	86	29	258	48	59
29	119	49	94	61	11	0		29	313	74	26	860	67	85
30	169	91	132	34	0	0		30	185	86	11	118	14	84
31	228	88	163	55	9	1		All	882	##	##	###	##	##
Al	###	174	###	410	79	85			5					
l		7		8	7	0								
July, 2001							August, 2001							
Segment							Segment							
	1	1A	1B	2	3	4			1	1A	1B	2	3	4
day	259	155	173	448	54	92		day	455	15	42	756	71	16
1								1	5	3				9
2	252	92	198	436	28	64		2	446	14	39	649	78	19
3	233	67	191	369	49	59		3	452	12	41	829	21	25

									5	9		6	4	
4	300	155	231	556	48	79		4	496	25	42	###	27	31
										2	1		8	5
5	265	85	226	418	46	10		5	525	12	44	152	69	28
						6				4	7	6		7
6	340	125	298	475	39	13		6	313	10	26	720	62	14
						8				4	3			5
7	554	280	455	100	13	16		7	311	10	26	573	64	91
					2	2				8	9			
8	467	92	432	874	71	16		8	289	72	25	888	11	17
						0					1		8	6
9	396	158	360	363	22	85		9	262	94	23	685	20	23
											2		9	3
10	386	95	356	468	59	73		10	405	19	35	117	22	33
										6	9	9	2	8
11	353	56	336	526	34	61		11	623	20	56	###	25	31
										9	2		6	9
12	415	102	375	500	32	54		12	655	15	56	190	13	27
										4	2	3	5	4
13	465	191	396	799	10	11		13	356	15	29	683	13	12
					7	5				3	2		5	5
14	516	172	445	###	25	21		14	294	10	24	555	13	13
					4	1				1	5		6	4
15	523	173	428	120	82	20		15	273	71	24	563	11	14
					0	2					6		8	9
16	242	74	218	387	52	73		16	213	75	18	968	13	19
											6		8	6
17	246	51	215	226	80	65		17	363	16	31	131	20	26
										5	4	3	0	0
18	260	64	232	492	54	67		18	648	32	60	###	34	27
										3	1		0	6
19	303	115	248	675	12	16		19	569	11	52	148	17	22
					2	1				2	5	6	4	2
20	356	168	301	615	10	23		20	255	56	23	563	54	10
					4	6					4			9
21	534	206	446	###	13	21		21	219	73	17	513	67	13
					6	8					6			9
22	493	154	421	142	15	23		22	135	33	12	316	54	14
					2	9					0			7
23	335	108	266	686	99	11		23	196	88	15	275	12	18
						8					8		0	1
24	387	139	335	646	85	13		24	302	15	28	765	17	28
						8				2	5		2	3
25	312	66	287	635	72	92		25	441	14	39	###	10	26
										0	8		5	8

26	256	58	216	708	10	13		26	399	46	35	145	18	26	
					5	4					9	7	1	2	
27	327	132	296	118	17	20		27	171	75	13	347	10	10	
				3	5	8					9		4	6	
28	528	205	481	218	17	25		28	146	45	12	246	42	13	
				7	8	9					8			6	
29	654	134	632	149	72	23		29	112	22	95	313	47	10	
				0		9								6	
30	428	174	361	449	49	81		30	143	86	10	522	59	10	
											2			2	
31	427	147	383	538	80	12		31	160	51	13	509	11	18	
						5					1		9	2	
All	####	####	####	####	##	##		All	####	##	##	####	##	##	
September, 2001								October, 2001							
	Segment								Segment						
	1	1A	1B	2	3	4			1	1A	1B	2	3	4	
day	388	168	358	177	15	19		day	65	27	42	34	42	89	
				8	6	4									
1								1							
2	369	71	303	165	18	20		2	46	21	25	32	29	74	
				7	1	2									
3	167	21	148	823	74	16		3	39	24	20	16	14	64	
						2									
4	33	21	22	120	19	94		4	52	39	21	6	28	75	
5	60	44	31	88	56	86		5	71	33	42	26	36	12	
														1	
6	66	19	52	64	72	94		6	129	78	60	75	69	12	
														9	
7	115	35	101	216	12	13		7	86	39	58	98	72	13	
					5	1								3	
8	195	56	160	119	94	17		8	40	16	24	25	29	53	
				4		3									
9	163	33	141	659	86	17		9	33	21	21	19	27	53	
						8									
10	65	15	53	120	59	15		10	40	22	18	25	20	45	
						5									
11	35	11	26	60	41	14		11	68	46	41	40	32	39	
						0									
12	27	12	19	99	62	10		12	102	52	58	74	51	76	
						6									

13	25	14	19	155	76	11	5	13	112	66	46	115	82	87			
14	126	84	107	84	10	13	9	14	87	60	36	66	47	74			
15	203	53	183	749	11	17	6	15	72	34	48	39	22	53			
16	225	40	208	479	58	20	9	16	64	27	47	13	27	54			
17	73	40	60	100	54	11	2	17	66	19	56	18	22	42			
18	62	14	51	46	44	11	5	18	92	42	53	32	33	41			
19	61	14	48	72	67	11	4	19	101	55	54	18	53	55			
20	42	20	33	124	64	15	1	20	101	46	62	84	86	68			
21	71	31	54	167	61	19	9	21	91	41	49	68	69	76			
22	129	56	95	770	85	21	4	22	54	34	28	16	7	33			
23	106	32	81	543	11	16	0	23	56	38	28	5	13	25			
24	44	13	35	82	42	96		24	58	24	34	16	11	13			
25	59	24	36	61	41	86		25	54	22	32	25	9	12			
26	54	26	40	22	36	88		26	81	52	36	28	28	12			
27	59	22	45	41	31	75		27	81	48	33	24	26	20			
28	122	52	75	56	49	13	2	28	65	33	35	35	24	15			
29	152	73	95	315	94	15	5	29	35	21	14	11	13	9			
30	158	54	107	216	61	15	8	30	33	24	9	13	15	4			
Al	###	116	###	###	##	##		31	20	16	4	7	15	2			
l	8							All	209	##	11	110	##	##			
									4	34	3						
November, 2001							December, 2001										
	Segment								Segment								
	1	1A	1B	2	3	4		1	1A	1B	2	3	4				
day	9	7	2	16	2	1		day	0	0	0	0	0	0			

1								1							
2	16	8	8	15	15	4		2	0	0	0	0	2	0	0
3	19	11	9	19	7	12		3	2	0	2	2	0	0	0
4	12	6	6	9	2	15		4	0	0	0	0	0	0	0
5	0	0	0	9	2	8		5	0	0	0	0	0	0	0
6	5	4	1	9	12	4		6	0	0	0	0	0	0	0
7	5	5	0	8	7	4		7	0	0	0	0	0	0	0
8	6	6	2	7	11	5		8	0	0	0	4	1	0	0
9	9	7	2	9	7	2		9	0	0	0	0	0	0	0
10	11	8	5	11	11	19		10	0	0	0	19	19	0	0
11	5	2	2	6	11	18		11	0	0	0	0	0	0	0
12	6	4	2	9	2	11		12	4	1	2	0	0	0	0
13	2	2	2	2	2	4		13	2	0	2	0	0	0	0
14	0	0	0	2	0	0		14	2	0	2	31	0	0	0
15	4	2	1	2	0	0		15	0	0	0	0	0	0	0
16	7	4	4	0	0	0		16	0	0	0	0	0	0	0
17	12	8	4	2	2	9		17	0	0	0	0	4	1	0
18	12	8	4	16	7	5		18	0	0	0	0	0	0	0
19	7	5	2	5	2	0		19	1	1	0	0	1	1	0
20	8	8	2	0	2	0		20	0	0	0	2	1	1	0
21	13	11	5	5	0	0		21	0	0	0	0	0	1	0
22	0	0	0	0	0	0		22	0	0	0	0	0	1	0
23	15	13	7	13	1	4		23	0	0	0	1	1	0	0
24	11	4	7	2	0	5		24	0	0	0	0	0	0	0
25	11	4	7	7	2	0		25	0	0	0	0	0	0	0
26	0	0	0	0	0	0		26	7	7	0	0	0	0	0
27	0	0	0	0	0	0		27	11	11	2	2	0	0	0
28	4	4	0	0	2	0		28	4	4	0	6	6	1	0
29	0	0	0	0	2	0		29	4	4	0	0	0	0	0
30	0	0	0	0	0	0		30	5	5	1	1	0	0	0
Al	209	141	84	183	11	13		31	0	0	0	1	0	0	0
l					1	0		All	42	33	11	69	35	6	0