

FOREST STATISTICS FOR SKAMANIA COUNTY, WASHINGTON

Resulting from the Inventory Phase of the Forest Survey  
of the United States, Conducted for the States of Washington and Oregon  
by the Pacific Northwest Forest Experiment Station,  
Forest Service, U. S. Dept. of Agriculture  
Data as of January 1, 1933

Thornton T. Munger,  
Station Director

H. J. Andrews, In Charge  
of Forest Survey

Field and office work outside national forest boundary  
largely by W. H. Bolles and P. N. Pratt  
Field and office work inside national forest boundary  
largely by G. A. Bright and D. J. Kirkpatrick

Portland, Oregon

March 13, 1934

---

Contents

- Table 1. Volume of timber by species for each ownership class  
Table 2. Area of all forest cover types, by ownership classes  
Table 3. Area of generalized forest types, by ownership classes  
Table 4. Area of certain immature coniferous forest types subdivided  
into age and stocking classes  
Table 5. Area of forest land by site quality classes  
Fig. 1. Ownership of forest land  
Fig. 2. Distribution of sawtimber volume by species, all ownerships  
Fig. 3. Distribution of county area by generalized types, all ownerships

FOREST STATISTICS FOR SKAMANIA COUNTY, WASHINGTON  
FROM INVENTORY PHASE OF FOREST SURVEY

TABLE 1. VOLUME OF TIMBER BY SPECIES FOR EACH OWNERSHIP CLASS  
IN THOUSANDS OF BOARD FEET, LOG SCALE, SCRIBNER RULE  
DATA CORRECTED TO JANUARY 1, 1933.

SYM- BOL :	SPECIES	PUBLIC OWNERSHIPS							TOTAL FOR COUNTY
		PRIVATE OWNERSHIP	STATE, AVAIL- ABLE FOR CUTTING	COUNTY	INDIAN, TRIBAL AND TRUST AL- LOTMENTS	FEDERAL, OTHER THAN NAT. FOR., INDIAN AND REVESTED LAND GRANTS	NATIONAL FOREST, AVAILABLE FOR CUTTING	NATIONAL FOREST, RESERVED FROM CUTTING	
DA :	OLD GROWTH DOUGLAS FIR, TREES OVER 40" DBH	1,077,735:	172,217:	11,672:	458:	409:	3,866,041:	21,615:	5,150,147
DB :	OLD GROWTH DOUGLAS FIR, TREES 20-40" DBH	336,112:	52,013:	3,634:	-:	630:	376,632:	-:	769,021
DC :	SECOND GROWTH DOUGLAS FIR, TREES 20-40" DBH	346,159:	95,159:	35,831:	4,163:	1,985:	2,160,765:	8,800:	2,652,862
DD :	SECOND GROWTH DOUGLAS FIR, TREES 16-20" DBH	220,339:	99,531:	1,792:	411:	1,731:	195,331:	-:	519,135
SA :	LARGE SITKA SPRUCE, TREES OVER 24" DBH	5:	3,010:	-:	-:	-:	500:	-:	3,515
ES :	ENGELMANN SPRUCE, TREES OVER 16" DBH	-:	-:	-:	-:	-:	32,025:	-:	32,025
HA :	LARGE WESTERN HEMLOCK, TREES OVER 20" DBH	353,083:	40,937:	3,665:	-:	-:	2,527,794:	9,640:	2,935,119
HB :	SMALL WESTERN HEMLOCK, TREES 16-20" DBH	24,827:	8,265:	844:	-:	-:	631,949:	-:	665,885
MH :	MOUNTAIN HEMLOCK, TREES OVER 16" DBH	6,835:	-:	-:	-:	-:	73,453:	-:	80,288
C :	WESTERN RED CEDAR, LIVE, TREES OVER 16" DBH	96,364:	16,859:	1,043:	24:	-:	496,772:	1,662:	612,724
YC :	ALASKA CEDAR, LIVE, TREES OVER 16" DBH	3,075:	-:	-:	-:	-:	14,959:	-:	18,034
KC :	DEAD CEDAR, TREES OVER 16" DBH	2,412:	1,669:	-:	-:	-:	3,358:	-:	7,439
YA :	LARGE PONDEROSA PINE, TREES OVER 22" DBH	-:	-:	-:	-:	-:	98,388:	-:	98,388
W :	WESTERN WHITE (& WHITEBARK) PINE, TREES OVER 16" DBH	31,957:	2,415:	387:	-:	-:	427,751:	2,569:	465,079
WF :	WHITE FIR AND LOWLAND WHITE FIR, TREES OVER 16" DBH	30,901:	11,918:	164:	-:	-:	92,676:	-:	135,659
NF :	NOBLE FIR, TREES OVER 16" DBH	76,065:	8,405:	2,557:	-:	-:	501,753:	600:	589,380
A :	SILVER FIR, TREES OVER 16" DBH	254,067:	4,084:	1,196:	-:	-:	1,990,112:	1,299:	2,250,758
AF :	ALPINE FIR, TREES OVER 16" DBH	-:	-:	-:	-:	-:	20:	-:	20
WL :	WESTERN LARCH, TREES OVER 16" DBH	-:	-:	-:	-:	-:	26,515:	-:	26,515
RA :	RED ALDER, TREES OVER 12" DBH	4,255:	889:	198:	44:	4:	1,100:	-:	6,490
BC :	BLACK COTTONWOOD (AND ASPEN), TREES OVER 12" DBH	2,962:	241:	62:	14:	-:	1,700:	-:	4,979
OM :	BIGLEAF MAPLE, TREES OVER 12" DBH	361:	101:	25:	5:	-:	350:	-:	842
:	TOTAL	2,867,514:	517,713:	63,070:	5,119:	4,759:	13,519,944:	46,185:	17,024,304

NOTE - IN ADDITION TO THE SPECIES FOR WHICH SAWTIMBER VOLUME ESTIMATES WERE OBTAINED, LODGEPOLE PINE AND OREGON ASH ARE KNOWN TO OCCUR IN INCONSEQUENTIAL QUANTITIES IN THIS COUNTY.

FOREST STATISTICS FOR SKAMANIA COUNTY, WASHINGTON  
FROM INVENTORY PHASE OF FOREST SURVEY

TABLE 2. AREA IN ACRES OF ALL FOREST COVER TYPES, BY OWNERSHIP CLASSES  
DATA CORRECTED TO JANUARY 1, 1933

SUR- VEY TYPE NO.	DEFINITION OF TYPES	PUBLIC OWNERSHIPS								TOTAL FOR COUNTY
		PRIVATE OWNERSHIP	STATE, AVAIL- ABLE FOR CUTTING	COUNTY	INDIAN, TRIBAL AND TRUST AL- LOTMENTS	FEDERAL, OTHER THAN NAT. FOR., INDIAN AND REVESTED LAND GRANTS	NATIONAL FOREST, AVAILABLE FOR	NATIONAL FOREST, RESERVED FROM	CUTTING	
2	NONFOREST LAND OTHER THAN AGRICULTURAL	12,723	245	425	-	354	19,622	-	-	33,369
3	AGRICULTURAL: CULTIVATED, AND CLEARED PASTURES ON OPERATED FARMS:	12,212	-	110	35	-	-	-	-	12,357
	DOUGLAS FIR: A FOREST CONTAINING OVER 60% DOUGLAS FIR									
6	DOUGLAS FIR, LARGE OLD GROWTH, OVER 40" DBH	23,687	3,598	948	-	5	77,678	1,040	-	106,956
7	DOUGLAS FIR, SMALL OLD GROWTH, 20-40" DBH	7,480	205	130	-	-	11,844	-	-	19,659
8	DOUGLAS FIR, LARGE SECOND GROWTH, 20-40" DBH	18,269	3,951	1,531	402	244	92,668	-	-	117,065
9	DOUGLAS FIR, SMALL SECOND GROWTH, 6-20" DBH	38,219	7,328	1,633	25	580	74,455	-	-	122,240
10	DOUGLAS FIR, SEEDLINGS AND SAPLINGS, 0-6" DBH	21,885	4,075	3,949	120	16	104,370	60	-	134,475
11	SITKA SPRUCE, LARGE: A FOREST CONTAINING OVER 50% SITKA SPRUCE, AND OVER 24" DBH	315	-	-	-	-	-	-	-	315
	WESTERN HEMLOCK: A FOREST CONTAINING OVER 50% WESTERN HEMLOCK:									
14	WESTERN HEMLOCK, LARGE, OVER 20" DBH	4,551	-	100	-	-	83,267	40	-	87,958
15	WESTERN HEMLOCK, SMALL, 6-20" DBH	997	-	30	-	-	1,043	-	-	2,970
16	WESTERN HEMLOCK, SEEDLINGS AND SAPLINGS, 0-6" DBH	-	-	-	-	-	749	-	-	749
17	WESTERN RED CEDAR, LARGE: A FOREST CONTAINING OVER 40% WESTERN RED CEDAR, AND OVER 24" DBH	405	315	-	-	-	1,470	-	-	2,190
20	PONDEROSA PINE, LARGE: A FOREST CONTAINING OVER 50% PONDEROSA PINE, AND OVER 22" DBH	-	-	-	-	-	4,946	-	-	4,946
	FIR-MOUNTAIN HEMLOCK: A FOREST CONTAINING OVER 50% OF EITHER NOBLE, SILVER, OR SHASTA FIR AND/OR MOUNTAIN HEMLOCK									
23	FIR-MOUNTAIN HEMLOCK, LARGE, OVER 16" DBH	14,930	710	60	-	-	82,115	-	-	97,815
24	FIR-MOUNTAIN HEMLOCK, SMALL, UNDER 16" DBH	2,897	-	-	-	-	79,745	-	-	82,642
26	LOGEPOLE PINE, SMALL: A FOREST CONTAINING OVER 50% LODGEPOLE PINE, AND UNDER 12" DBH	85	-	-	-	-	11,640	-	-	11,725
	WHITE FIR-LARCH-DOUGLAS FIR: A MIXED FOREST OF WESTERN LARCH, WHITE FIR, DOUGLAS FIR, PONDEROSA PINE, OR LODGEPOLE PINE									
27	WHITE FIR-LARCH-DOUGLAS FIR, LARGE, OVER 20" DBH	-	-	-	-	-	14,874	-	-	14,874
28	WHITE FIR-LARCH-DOUGLAS FIR, SMALL, UNDER 20" DBH	-	-	-	-	-	9,922	-	-	9,922
31	HARDWOODS: ALDER, MAPLE, ASH, AND/OR COTTONWOOD PREDOMINATING	938	25	-	-	-	327	-	-	1,290
33	SUBALPINE: A FOREST AT THE UPPER LIMITS OF TREE GROWTH, USUALLY UNMERCHANTABLE	8,014	-	-	-	-	39,828	-	-	47,842
35	OLD CUTOVERS, NOT RESTOCKED: CLEAR CUT PRIOR TO 1920	6,838	840	1,714	40	315	-	-	-	9,747
36	RECENT CUTOVERS: CLEAR CUT SINCE JANUARY 1920	8,042	1,042	781	50	40	4,088	-	-	14,043
37	DEFORESTED BURNS: ANY NONRESTOCKED BURN, NOT CUT OVER	36,281	8,116	15,419	-	530	52,949	-	-	113,295
38	NONCOMMERCIAL ROCKY AREAS	3,214	105	195	-	35	25,922	-	-	29,471
	TOTAL	221,982	30,555	27,025	672	2,119	794,422	1,140	-	1,077,915

FOREST STATISTICS FOR SKAMANIA COUNTY, WASHINGTON  
FROM INVENTORY PHASE OF FOREST SURVEY

TABLE 3. AREA IN ACRES OF GENERALIZED FOREST TYPES, BY OWNERSHIP CLASSES  
DATA CORRECTED TO JANUARY 1, 1933

DEFINITION OF TYPES	PUBLIC OWNERSHIPS								TOTAL FOR COUNTY	
	PRIVATE OWNERSHIP	STATE, AVAIL- ABLE FOR CUTTING	COUNTY	INDIAN, TRIBAL AND TRUST AL- LOTMENTS	FEDERAL, OTHER THAN NAT. FOR., INDIAN AND REVESTED LAND GRANTS	NATIONAL FOREST, AVAILABLE FOR CUTTING	NATIONAL FOREST, RESERVED FROM CUTTING			
NONFOREST LAND TYPES										
SURVEY TYPES 2 AND 3	24,935	245	535	35	354	19,622	-		45,726	
HARDWOODS: ALDER, MAPLE, ASH, AND/OR COTTONWOOD PREDOMINATING										
SURVEY TYPE 31	938	25	-	-	-	327	-		1,290	
CONIFEROUS TIMBER TYPES OVER ABOUT 20" DBH										
SURVEY TYPES 6, 7, 8, 11, 14, 17, 20, 23, AND 27	69,637	8,779	2,769	402	249	368,862	1,080		451,778	
CONIFEROUS TIMBER TYPES FROM 6"-20" DBH										
ON CUTOVER AREAS:	12,103	348	584	-	25	-	-		13,060	
SURVEY TYPES 9 AND 15	27,113	6,980	1,079	25	555	76,398	-		112,150	
TOTAL	39,216	7,328	1,663	25	580	76,398	-		125,210	
CONIFEROUS TIMBER TYPES FROM 0"-6" DBH										
ON CUTOVER AREAS:	9,894	845	933	40	16	2,422	20		14,170	
SURVEY TYPES 10 AND 16	11,991	3,230	3,016	80	-	102,697	40		121,054	
TOTAL	21,885	4,075	3,949	120	16	105,119	60		135,224	
CONIFEROUS TIMBER TYPES FROM 0"-16" OR 20" DBH										
ON CUTOVER AREAS:	-	-	-	-	-	-	-		-	
SURVEY TYPES 24 AND 28	2,897	-	-	-	-	89,667	-		92,564	
TOTAL	2,897	-	-	-	-	89,667	-		92,564	
NONCOMMERCIAL TYPES										
SURVEY TYPES 26, 33, AND 38	11,313	105	195	-	35	77,390	-		89,038	
RECENT CUTOVERS: CLEAR CUT SINCE JANUARY 1920										
SURVEY TYPE 36	8,042	1,042	781	50	40	4,088	-		14,043	
OLD CUTOVERS NONRESTOCKED, AND DEFORESTED BURNS										
SURVEY TYPES 35 AND 37	43,119	8,956	17,133	40	845	52,949	-		123,042	
TOTAL	221,982	30,555	27,025	672	2,119	794,422	1,140		1,077,915	

FOREST STATISTICS FOR SKAMANIA COUNTY, WASHINGTON  
FROM INVENTORY PHASE OF FOREST SURVEY

SKAMANIA 4

TABLE 4. AREA OF CERTAIN IMMATURE CONIFEROUS FOREST TYPES SUBDIVIDED INTO AGE AND STOCKING CLASSES  
DATA CORRECTED TO JANUARY 1, 1933

		TYPE NUMBER AND NAME							
		10	16	9	15	24	28		
AGE	DEGREE OF STOCKING CLASS	DOUGLAS FIR SEEDLINGS & SAPLINGS 0"-6" DBH	WESTERN HEMLOCK SEEDLINGS & SAPLINGS 0"-6" DBH	DOUGLAS FIR SMALL SECOND GROWTH 6"-20" DBH	WESTERN HEMLOCK SECOND GROWTH 6"-20" DBH	FIR-MT. HEMLOCK SMALL 0"-16" DBH	WHITE FIR-LARCH DOUGLAS FIR SMALL 0"-20" DBH	TOTAL	
		ACRES	ACRES	ACRES	ACRES	ACRES	ACRES	ACRES	
10	GOOD	15,724	-	-	-	-	-	15,724	
	MEDIUM	11,793	-	-	-	1,585	-	13,378	
	POOR	22,138	506	-	-	22,092	-	44,736	
	TOTAL	49,655	506	-	-	23,677	-	73,838	
20	GOOD	26,253	243	-	-	8,183	-	34,679	
	MEDIUM	5,281	-	-	-	2,278	-	7,559	
	POOR	8,508	-	-	-	3,200	-	11,708	
	TOTAL	40,042	243	-	-	13,661	-	53,946	
30	GOOD	33,811	-	16,402	-	5,455	444	56,112	
	MEDIUM	10,967	-	11,764	-	3,235	2,884	28,850	
	POOR	-	-	100	-	-	-	100	
	TOTAL	44,778	-	28,266	-	8,690	3,328	85,062	
40	GOOD	-	-	7,570	-	8,288	-	15,858	
	MEDIUM	-	-	2,887	-	-	-	2,887	
	POOR	-	-	3,559	45	-	-	3,604	
	TOTAL	-	-	14,016	45	8,288	-	22,349	
50	GOOD	-	-	495	-	842	2,832	4,169	
	MEDIUM	-	-	925	-	-	-	925	
	POOR	-	-	270	-	-	-	270	
	TOTAL	-	-	1,690	-	842	2,832	5,364	
60	GOOD	-	-	8,662	-	-	3,762	12,424	
	MEDIUM	-	-	20,268	-	2,848	-	23,116	
	POOR	-	-	480	-	112	-	592	
	TOTAL	-	-	29,410	-	2,960	3,762	36,132	
70	GOOD	-	-	2,927	-	6,656	-	9,583	
	MEDIUM	-	-	755	-	-	-	755	
	POOR	-	-	618	-	-	-	618	
	TOTAL	-	-	4,300	-	6,656	-	10,956	
80	GOOD	-	-	4,514	15	7,488	-	12,017	
	MEDIUM	-	-	11,164	80	578	-	11,822	
	POOR	-	-	1,375	-	-	-	1,375	
	TOTAL	-	-	17,053	95	8,066	-	25,214	
90	GOOD	-	-	-	-	-	-	-	
	MEDIUM	-	-	12,536	-	-	-	12,536	
	POOR	-	-	-	-	-	-	-	
	TOTAL	-	-	12,536	-	-	-	12,536	
100	GOOD	-	-	5,875	90	-	-	5,965	
	MEDIUM	-	-	6,400	2,740	9,802	-	18,942	
	POOR	-	-	2,694	-	-	-	2,694	
OVER	TOTAL	-	-	14,969	2,830	9,802	-	27,601	
	TOTAL	134,475	749	122,240	2,970	82,642	9,922	352,998	

NOTE - IN ADDITION TO THE IMMATURE TYPES RECOGNIZED ABOVE THERE ARE OTHER TYPES IN WHICH NET GROWTH IS TAKING PLACE, BUT WHICH WERE NOT SUBDIVIDED INTO AGE AND STOCKING CLASSES.

FOREST STATISTICS FOR SKAMANIA COUNTY, WASHINGTON  
FROM INVENTORY PHASE OF FOREST SURVEY

TABLE 5. AREA OF FOREST LAND BY SITE QUALITY CLASSES  
DATA CORRECTED TO JANUARY 1, 1933

SITE CLASSIFICATION	SITE QUALITY CLASS	AREA IN ACRES	PERCENT OF COMMER- CIOUS FOR- EST LAND	PERCENT OF TOTAL FOREST LAND	PERCENT OF TOTAL AREA OF COUNTY
CONIFEROUS FOREST LAND EXCLUSIVE OF LODGEPOLE TYPE, SUBALPINE, AND NONCOMMERCIAL ROCKY AREAS	I	-			
	II	36,543	3.9	3.5	3.4
	III	446,771	47.4	43.4	41.5
	IV	370,732	39.4	35.9	34.4
	V	87,815	9.3	8.5	8.2
TOTAL CONIFEROUS FOREST SITES (COMMERCIAL)		941,861	100.0		
LODGEPOLE PINE LAND		11,725		1.1	1.1
NONCOMMERCIAL ROCKY AREAS		29,471		2.9	2.7
SUBALPINE FOREST AREAS		47,842		4.6	4.4
HARDWOOD LAND		1,290		0.1	0.1
TOTAL		90,328			
TOTAL FOREST LAND IN COUNTY		1,032,189		100.0	
NONFOREST LAND		45,726	45,726		4.2
TOTAL AREA OF COUNTY		1,077,915	1,077,915		100.0

NOTE - THE TERM "SITE QUALITY" DENOTES THE FOREST PRODUCTIVE CAPACITY OF AN AREA AND IS A REFLECTION OF THE COMPOSITE EFFECT OF ALL CLIMATIC AND SOIL CONDITIONS.

THE TERM "SITE QUALITY" FOLLOWED BY ROMAN NUMERALS I TO V DESIGNATES THE RELATIVE PRODUCTIVE CAPACITY, "SITE QUALITY I" BEING THE BEST AND "SITE QUALITY V" THE POOREST SITE QUALITY RECOGNIZED, THE HEIGHT OF THE TREES AT A GIVEN AGE IS USED AS A STANDARD OF CLASSIFICATION.

THE SITE QUALITY CLASSIFICATION DESIGNED FOR THE DOUGLAS FIR TYPE HAS BEEN EMPLOYED FOR THAT AND ALL OTHER TYPES IN THIS COUNTY EXCEPT LODGEPOLE PINE, SUBALPINE, HARDWOODS AND NONCOMMERCIAL ROCKY AREAS, FOR WHICH THERE HAS BEEN NO DIFFERENTIATION INTO SITE QUALITY CLASSES.

FIGURE 1. OWNERSHIP OF FOREST LAND (FROM TABLE 2)

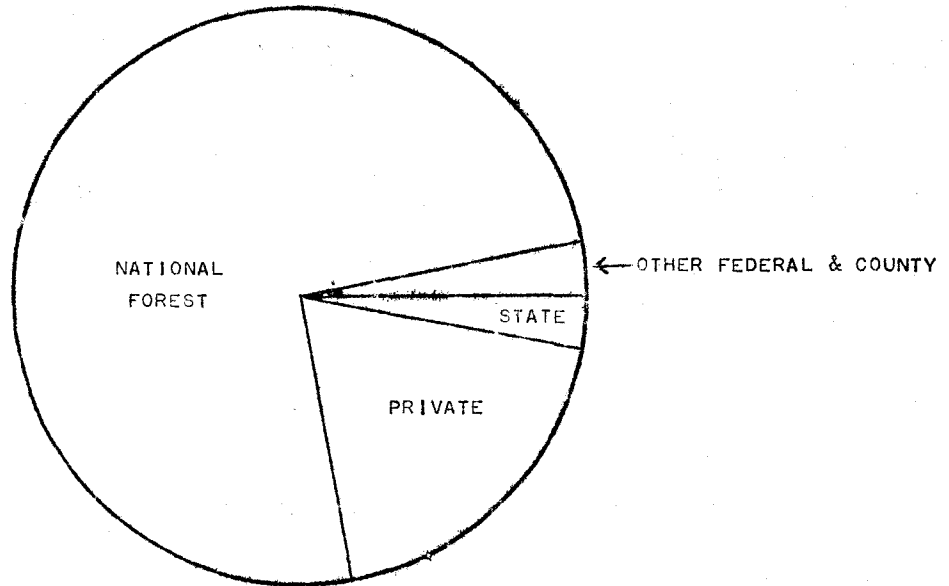


FIGURE 2. DISTRIBUTION OF SAWTIMBER VOLUME BY SPECIES, ALL OWNERSHIPS (FROM TABLE 1)

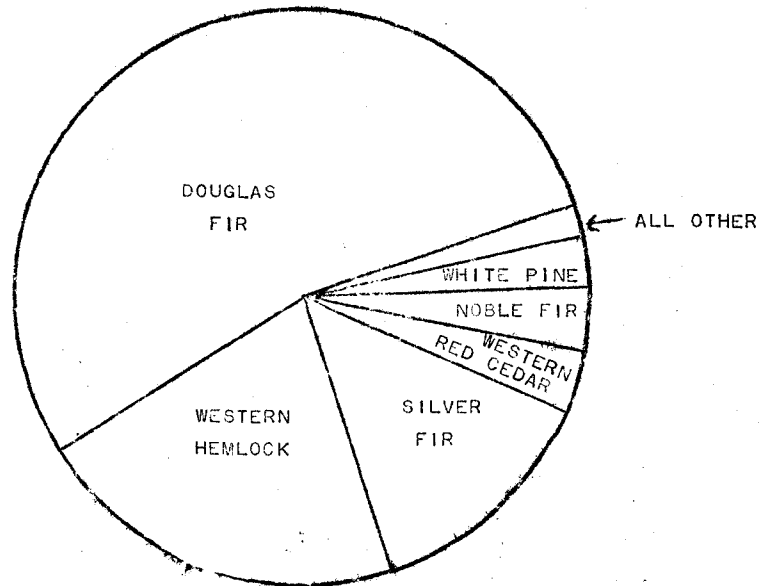


FIG. 3. DISTRIBUTION OF COUNTY AREA BY GENERALIZED TYPES, ALL OWNERSHIPS (FROM TABLES 3 AND 4)

