
Authors

A Gannet Hallar, Noah P. Molotch, Jenny L. Hand, Ben Livneh, Ian B. McCubbin, Ross Petersen, Joseph Michalsky, Douglas Lowenthal, and Kenneth E. Kunkel

LETTER • OPEN ACCESS

Impacts of increasing aridity and wildfires on aerosol loading in the intermountain Western US

To cite this article: A Gannet Hallar *et al* 2017 *Environ. Res. Lett.* **12** 014006

View the [article online](#) for updates and enhancements.

Related content

- [Modeling very large-fire occurrences over the continental United States from weather and climate forcing](#)
R Barbero, J T Abatzoglou, E A Steel *et al.*
- [Controls on interannual variability in lightning-caused fire activity in the western US](#)
John T Abatzoglou, Crystal A Kolden, Jennifer K Balch *et al.*
- [The 2015 drought in Washington State: a harbinger of things to come?](#)
Miriam E Marlier, Mu Xiao, Ruth Engel *et al.*

Recent citations

- [Southwestern U.S. Biomass Burning Smoke Hygroscopicity: The Role of Plant Phenology, Chemical Composition, and Combustion Properties](#)
S. L. Gomez *et al*
- [A Closure Study of Total Scattering Using Airborne In Situ Measurements from the Winter Phase of TCAP](#)
Evgeni Kassianov *et al*
- [Analysis of aerosol composition data for western United States wildfires between 2005 and 2015: Dust emissions, chloride depletion, and most enhanced aerosol constituents](#)
Joseph S. Schlosser *et al*

Environmental Research Letters



LETTER

Impacts of increasing aridity and wildfires on aerosol loading in the intermountain Western US

OPEN ACCESS

RECEIVED

23 September 2016

REVISED

29 November 2016

ACCEPTED FOR PUBLICATION

1 December 2016

PUBLISHED

6 January 2017

Original content from this work may be used under the terms of the [Creative Commons Attribution 3.0 licence](#).

Any further distribution of this work must maintain attribution to the author(s) and the title of the work, journal citation and DOI.



A Gannet Hallar^{1,2,3}, Noah P Molotch^{4,5}, Jenny L Hand⁶, Ben Livneh^{7,8}, Ian B McCubbin^{3,5}, Ross Petersen^{1,3}, Joseph Michalsky^{7,9}, Douglas Lowenthal^{1,2} and Kenneth E Kunkel¹⁰

¹ University of Utah, Department of Atmospheric Science, Salt Lake City, UT, USA

² Desert Research Institute, Division of Atmospheric Science, Reno, NV, USA

³ Storm Peak Laboratory, Desert Research Institute, Steamboat Springs, CO, USA

⁴ University of Colorado, Geography Department and Institute of Arctic and Alpine Research, Boulder, CO, USA

⁵ Jet Propulsion Laboratory, California Institute of Technology, Pasadena, CA, USA

⁶ Colorado State University, Cooperative Institute for Research in the Atmosphere, Fort Collins, CO, USA

⁷ Cooperative Institute for Research in Environmental Sciences, University of Colorado, Boulder, CO, USA

⁸ Department of Civil, Environmental, and Architectural Engineering, University of Colorado, Boulder, CO, USA

⁹ NOAA Earth System Research Laboratory, Boulder, CO, USA

¹⁰ Cooperative Institute for Climate and Satellites, North Carolina State University, Asheville, NC, and National Centers for Environmental Information, Asheville, NC, USA

E-mail: gannet.hallar@utah.edu

Keywords: aridity, wildfires, aerosol, aerosol optical depth, IMPROVE

Supplementary material for this article is available [online](#)

Abstract

Feedbacks between climate warming, land surface aridity, and wildfire-derived aerosols represent a large source of uncertainty in future climate predictions. Here, long-term observations of aerosol optical depth, surface level aerosol loading, fire-area burned, and hydrologic simulations are used to show that regional-scale increases in aridity and resulting wildfires have significantly increased summertime aerosol loading in remote high elevation regions of the Intermountain West of the United States. Surface summertime organic aerosol loading and total aerosol optical depth were both strongly correlated ($p < 0.05$) with aridity and fire area burned at high elevation sites across major western US mountain ranges. These results demonstrate that surface-level organic aerosol loading is dominated by summertime wildfires at many high elevation sites. This analysis provides new constraints for climate projections on the influence of drought and resulting wildfires on aerosol loading. These empirical observations will help better constrain projected increases in organic aerosol loading with increased fire activity under climate change.

1. Introduction

In the Western US, recent research has documented a widespread decline in winter snow accumulation and associated increases in land surface aridity (Mote *et al* 2005, Barnett *et al* 2008). Ecosystem response to hydrologic change has been documented with increases in wildfire across the western US coinciding with trends of intensifying drought severity (Westerling *et al* 2006, Pierce *et al* 2013, Dennison *et al* 2014, Abatzoglou and Williams 2016). In the Western US the average area burned by wildfire per year is projected to increase by up to a factor of four per

degree Celsius of warming (Solomon *et al* 2011). Recent simulations show that anthropogenic climate change accounted for ~55% increase in forest fuel aridity from 1979 to 2015 in the Western US, adding nine days of high fire potential between 2000 and 2015 (Abatzoglou and Williams 2016). Barbero *et al* (2015) and Liu *et al* (2016) projected increased fires and associated particulate matter, respectfully, at regions across the West due to climate change. While we recognize these projects have limitations, as described by McKenzie and Littell (2016), it appears clear that wildfires will likely increase in the West. These fires emit large quantities of aerosols into the atmosphere,

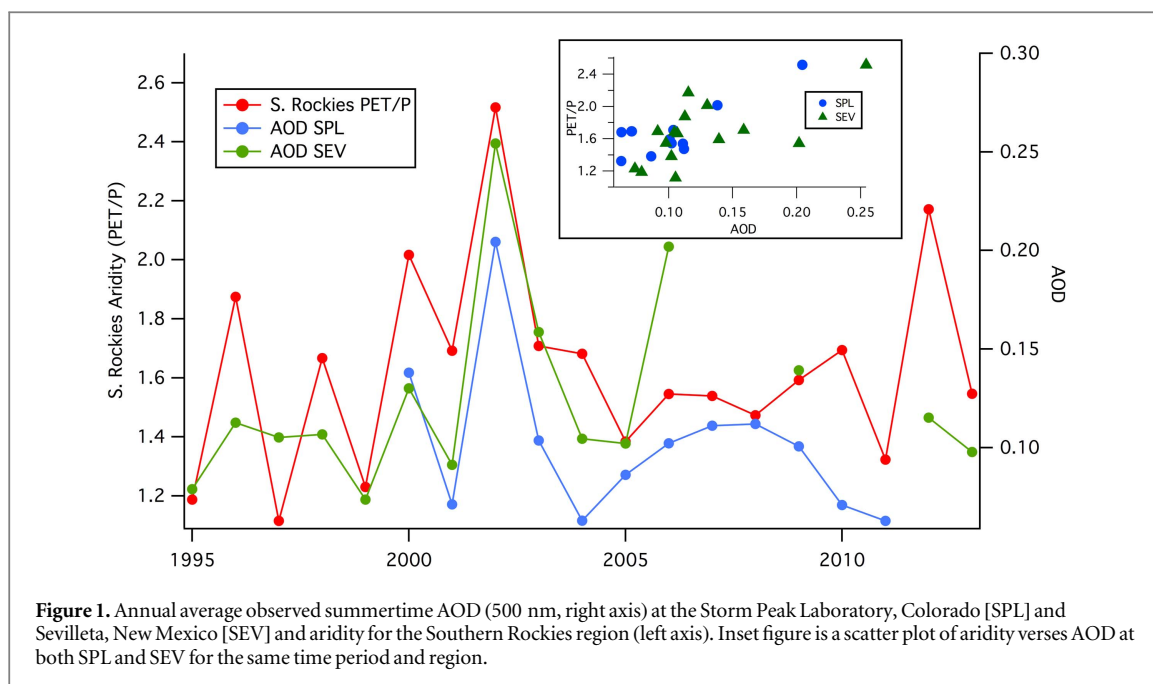


Table 1. Correlation between year-to-year summertime aridity (PET/P) and summertime average AOD at 500 nm (SPL: 1999–2013 and SEV: 1995–2013) shown in first two columns; column 3–15 show correlation between year-to-year summertime aridity (PET/P) and summertime average organic aerosol loading at each IMPROVE site (1989–2013). First, correlations are shown as Pearson product moment correlation coefficient (*R*) in black ink. Next, the numbers in parentheses are the probability value (*p*) using 2-tailed student T-test. Correlations listed are greater than 95% confidence. NC = No Correlation, red = 99.9% confidence or greater (<0.001), green = 99.0% confidence or greater (<0.01), purple = 95% confidence or greater (<0.05).

EPA Level 3 Ecoregion	AOD Site and Elevation		Identifier of IMPROVE Site in Intermountain West and Elevation												
	SPL 3210 m	SEV 1500 m	NOCH 1283 m	CLPE 2470 m	YELL 2442 m	BRID 2626 m	MOZI 3243 m	ROMO 2760 m	SAPE 2935 m	WHRI 3413 m	WEMI 2750 m	PEFO 1766 m	MEVE 2172 m	GRSA 2498 m	CANY 1798 m
Southern Rockies	0.81 (0.0014)	0.63 (0.012)	NC	0.69 (0.013)	0.47 (0.016)	0.50 (0.0094)	0.79 (0.000064)	0.73 (0.000072)	NC	0.69 (0.0061)	0.66 (0.00032)	0.59 (0.0024)	0.44 (0.028)	0.51 (0.0094)	0.52 (0.0061)
Wasatch/ Uintah	0.65 (0.023)	0.56 (0.031)	NC	0.62 (0.032)	0.49 (0.011)	0.56 (0.0032)	0.72 (0.00055)	0.60 (0.0025)	NC	NC	0.42 (0.036)	NC	NC	NC	0.51 (0.0081)
Middle Rockies	NC	NC	0.58 (0.046)	0.65 (0.023)	NC	0.48 (0.012)	0.53 (0.019)	0.52 (0.011)	NC	NC	NC	NC	0.46 (0.021)	NC	NC
Arizona/New Mexico Mts.	0.72 (0.0087)	0.66 (0.0079)	NC	NC	0.39 (0.046)	NC	0.68 (0.0013)	0.58 (0.0037)	0.59 (0.035)	0.69 (0.0059)	0.52 (0.0075)	0.51 (0.011)	0.57 (0.0028)	0.56 (0.0037)	0.57 (0.0024)

which impact climate, air quality and visibility, and human health (e.g. Akimoto 2003, Seinfeld and Pandis 2012). Aerosols can scatter and absorb solar radiation modifying the radiative balance of the atmosphere. Organic aerosols primarily scatter solar radiation (e.g. Kanakidou *et al* 2005), increasing atmospheric optical depth (AOD) and resulting in a reduction of solar radiation at the surface. In remote regions of the West, organic aerosols often dominate the mass of particulate matter in the atmosphere (Zhang *et al* 2007, Hand *et al* 2013). Wildfires in the West are expected to increase summertime atmospheric organic aerosol concentration 40% by the 2050s (Spracklen *et al* 2009). Unlike the rest of the US, visibility has not improved in the intermountain region during the last two decades and, in fact, certain types of aerosols are increasing (Hand *et al* 2013, Collaud Coen *et al* 2013).

The feedbacks between land surface aridity, atmospheric composition, and atmospheric transmissivity

are fairly well established (e.g. Hand *et al* 2014). Future increases in aridity are expected to result in an increase in aerosol loading, which then decreases solar irradiance resulting in a decreased land surface temperature. The strength of this feedback mechanism is largely dependent on the magnitude of future aerosol loading (IPCC, Climate Change 2013). While the regional climate response to future aerosol loading in the Western US is uncertain, previous works have established that decreases in summer insolation lead to decreases in the intensity of the North American summer monsoon (Harrison *et al* 2003, Diffenbaugh *et al* 2006), highlighting a potential positive feedback cycle in which increased aerosol loading resulting from increases in a fire may exacerbate drought by decreasing insolation and weakening the North American monsoonal flow. Given recent increases in Western US wildfire activity, the linkages between land surface aridity, wildfire, and aerosol loading may act as a primary driver of regional climate response to

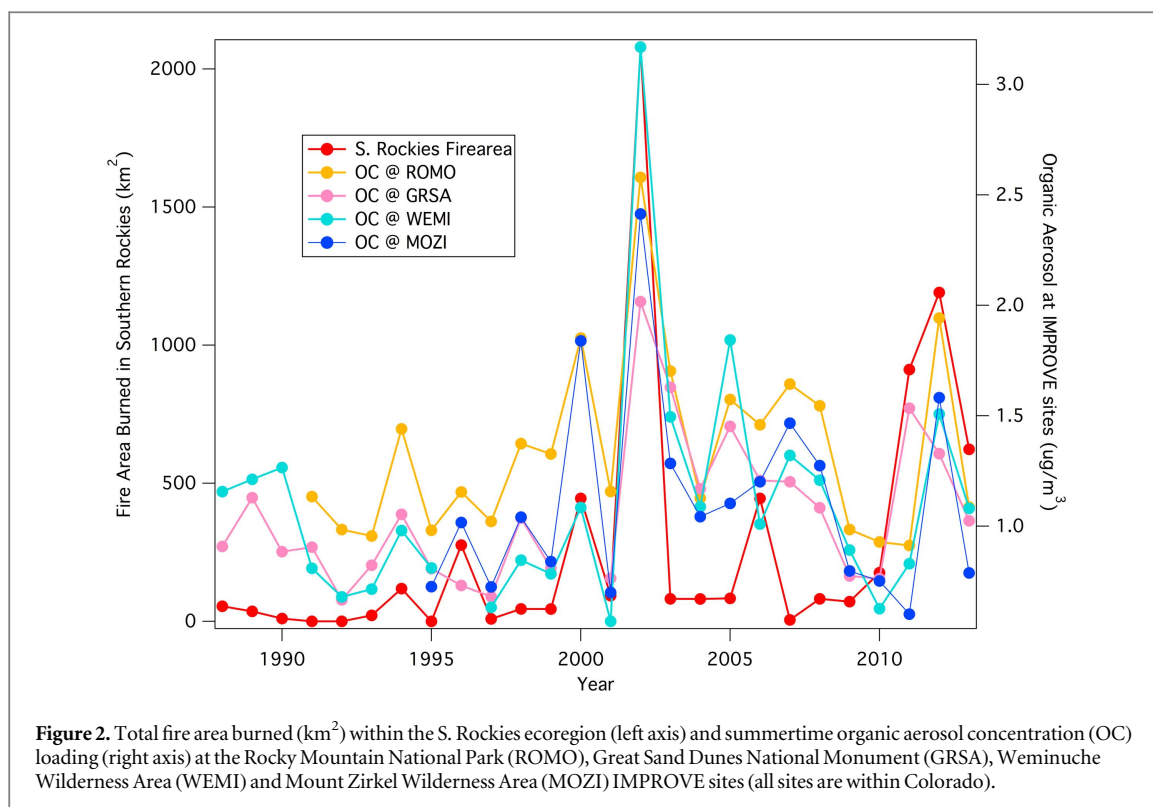


Figure 2. Total fire area burned (km^2) within the S. Rockies ecoregion (left axis) and summertime organic aerosol concentration (OC) loading (right axis) at the Rocky Mountain National Park (ROMO), Great Sand Dunes National Monument (GRSA), Weminuche Wilderness Area (WEMI) and Mount Zirkel Wilderness Area (MOZI) IMPROVE sites (all sites are within Colorado).

Table 2. Correlation between total annual fire area burned and summertime average AOD (SPL: 1999–2013 and SEV: 1995–2013) in first two columns; column 3–18 show correlation between total annual fire area burned and summertime average organic aerosol loading at IMPROVE sites (1989–2013). First, correlations are shown as Pearson product moment correlation coefficient (R) in black ink. Next, the number in parentheses represents probability value (p) using 2-tailed student T-test. Correlations listed are greater than 95% confidence. NC = No Correlation, red = 99.9% confidence or greater (<0.001), green = 99.0% confidence or greater (<0.01), purple = 95% confidence or greater (<0.05).

EPA Level 3 Ecoregion	AOD Site and Elevation		Identifier of IMPROVE Site in Intermountain West and Elevation															
	SPL 3210 m	SEV 1500 m	CLPE 2470 m	YELL 2442 m	BRID 2626 m	MOZI 3243 m	ROMO 2760 m	SAPE 2935 m	WHRI 3413 m	WEMI 2750 m	PEFO 1766 m	GRSA 2498 m	CANY 1798 m	BAND 1988 m	BOAP 1389 m	NOAB 2482 m	THBA 1195 m	NOCH 1283 m
Southern Rockies	0.70 (0.012)	0.70 (0.0040)	NC	0.44 (0.023)	0.39 (0.049)	0.63 (0.0035)	0.64 (0.00091)	NC	0.61 (0.021)	0.70 (0.00083)	0.70 (0.00013)	0.69 (0.00012)	NC	NC	0.58 (0.031)	NC	NC	NC
Wasatch/Uintah	0.74 (0.0057)	0.67 (0.0031)	0.71 (0.0010)	0.42 (0.031)	0.57 (0.0023)	0.73 (0.00041)	0.77 (0.000017)	NC	0.59 (0.028)	0.75 (0.000014)	0.62 (0.0012)	0.62 (0.00088)	0.49 (0.012)	NC	NC	NC	0.66 (0.038)	0.64 (0.025)
Middle Rockies	NC	NC	NC	NC	NC	0.54 (0.016)	0.56 (0.0057)	NC	NC	NC	NC	NC	NC	NC	NC	0.68 (0.011)	NC	0.89 (0.00012)
Arizona/New Mexico Mts.	NC	NC	NC	NC	NC	NC	NC	0.88 (0.011)	NC	0.44 (0.027)	NC	0.71 (0.00062)	NC	0.66 (0.00038)	NC	NC	NC	NC

global-scale warming. Hence, identifying these linkages and predicting future aerosol loading is critical for understanding feedback mechanisms between climate and wildfire activity and for developing emission control policies for governing air quality (Watson 2002). The objective of this research is to explicitly identify the linkages between aerosol loading, land surface aridity and wildfire activity over the mountainous Western US. These relationships provide new constraints for climate projections on the influence of drought and wildfires on aerosol loading within specific ecoregions.

2. Methods

Long-term observations of AOD, surface level aerosol loading, fire-area burned, and model-estimates of land

surface aridity from the variable infiltration capacity (VIC) model were used to show linkages between drought, wildfire, and summertime aerosol loading in remote high elevation regions of the Intermountain West. Specifically, correlations between annual ecoregion land surface aridity and wildfire area (each treated as independent variables) and AOD and organic carbon concentration (each treated as dependent variables) were evaluated. Each of these data sets, and associated statistical methods, are described below.

2.1. Aerosol optical depth

Long-term ground based AOD data sets available from a variety of networks in the remote high elevation Intermountain West (defined by a bounding box from -110.5 to -105.5 longitude and 46.0 – 33.5 latitude, and elevation greater than 1200 m) were used to

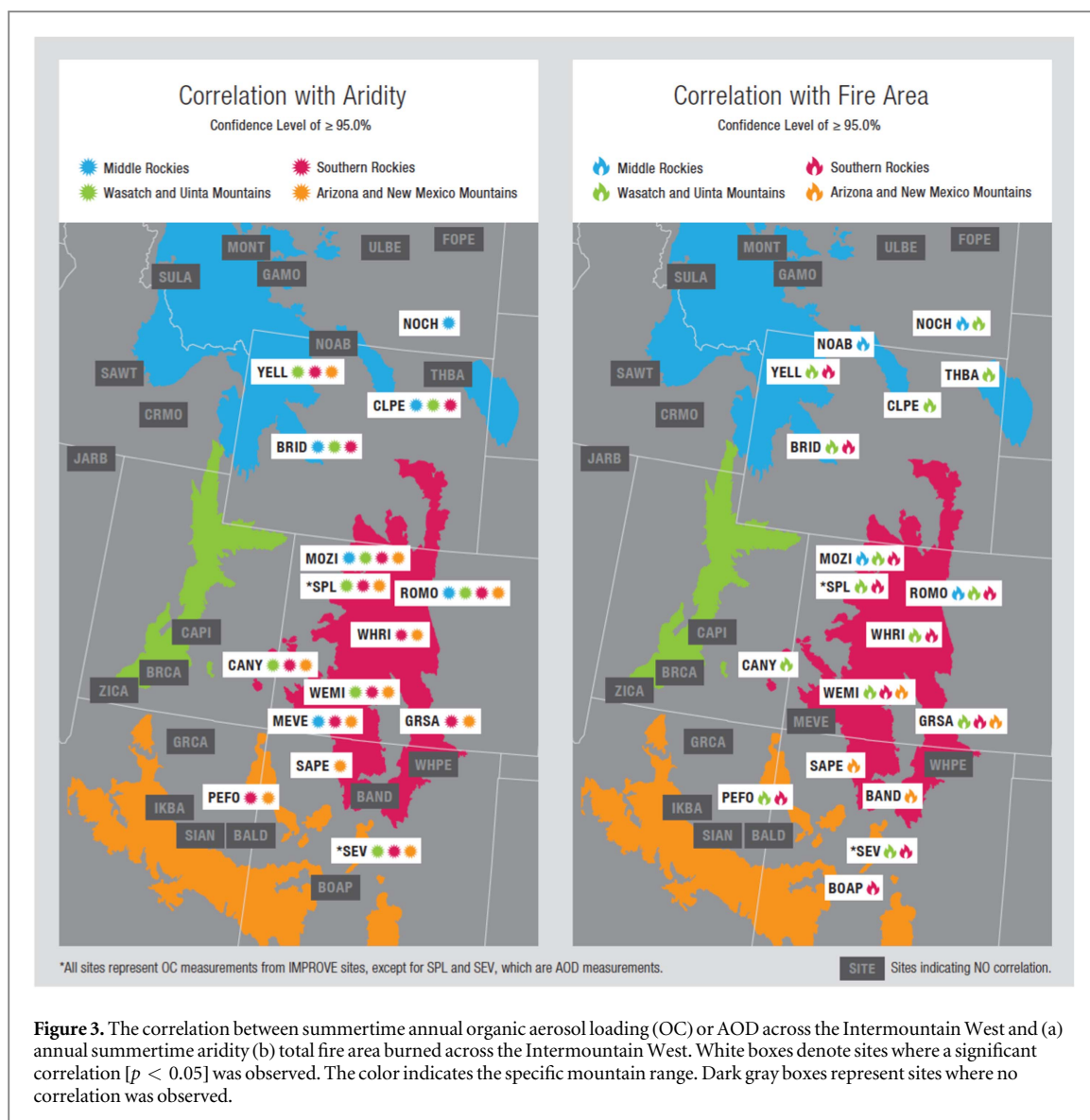


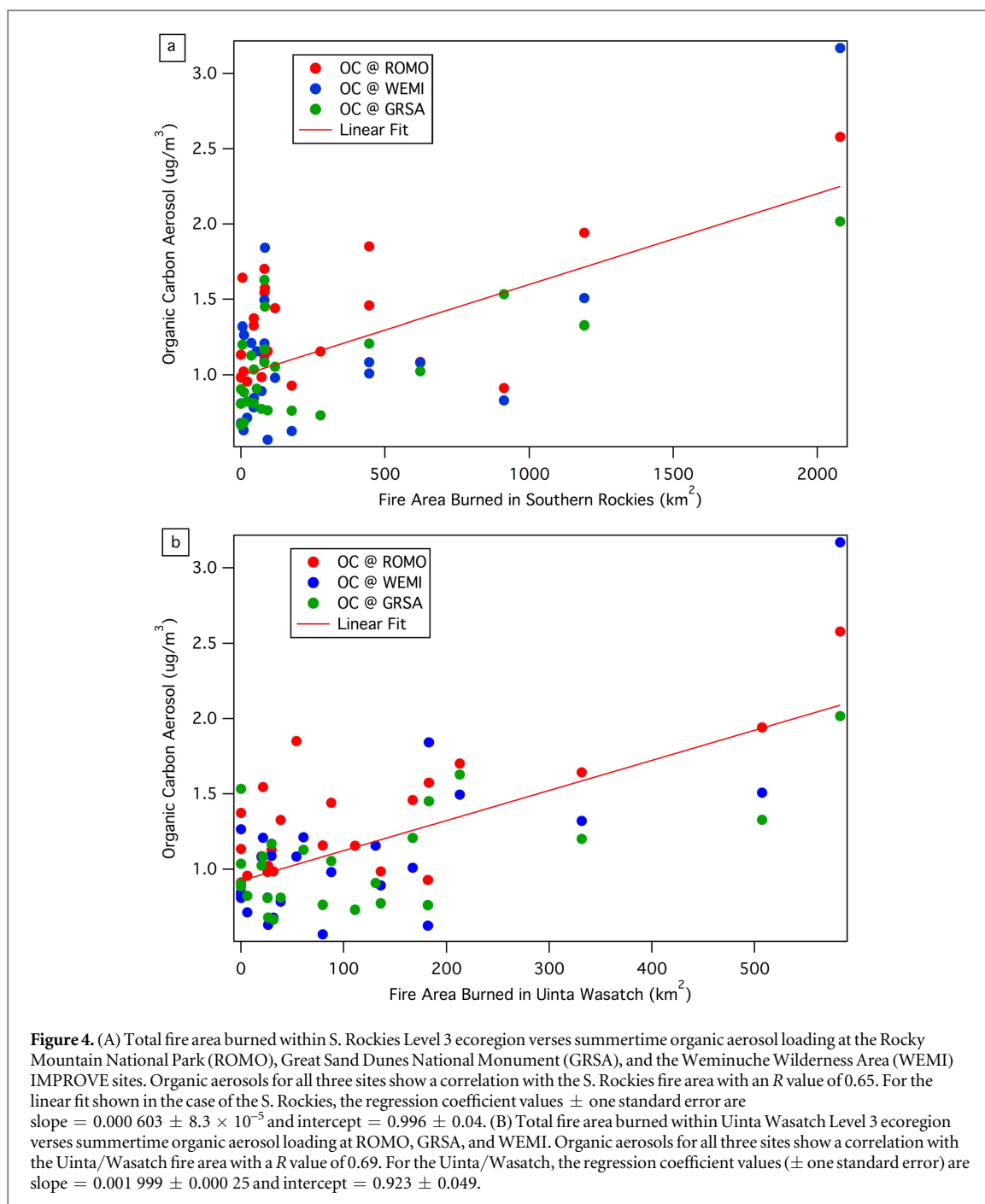
Figure 3. The correlation between summertime annual organic aerosol loading (OC) or AOD across the Intermountain West and (a) annual summertime aridity (b) total fire area burned across the Intermountain West. White boxes denote sites where a significant correlation [$p < 0.05$] was observed. The color indicates the specific mountain range. Dark gray boxes represent sites where no correlation was observed.

investigate the relationship between aerosol loading and aridity/fire area burned. AOD sites were used only if data for more than 10 summers (day of year 170–220) were available. AOD at 500 nm was obtained from a visible multifilter rotating shadowband radiometer deployed at Storm Peak Laboratory (SPL) in Northwestern Colorado, as part of the US Department of Agriculture’s ultraviolet radiation monitoring network (Bigelow *et al* 1998). Calibrated, cloud-screened data from 1999 to 2011 and in 2013 were used (Hallar *et al* 2015). The summertime definition (day of year 170–220, mid June to early August) was based on the strong seasonal increase in aerosol loading observed previously at SPL (Hallar *et al* 2015). Additionally, the NASA AEROSOL ROBOTIC NETWORK (AERONET) data were utilized (Holben *et al* 1998), and one site in the Sevilleta National Wildlife Refuge (SEV) in New Mexico provided more than 10 years of high quality summer Level 2 AOD data at 500 nm between 1995 and 2013. The NOAA SURFRAD network was not used, as all sites within this western

region are at low elevations or strongly impacted by local urban aerosols.

2.2. Organic carbon concentration dataset

Forty-two Interagency Monitoring of PROtected Visual Environments (IMPROVE) sites fit the criteria of area and elevation, described above. Similar to the criteria above, IMPROVE sites were only considered if more than 10 years of summertime data were available. This criterion eliminated nine sites within the Intermountain West. IMPROVE sites are located in national parks, monuments, or similar areas and represent regional background conditions (Malm *et al* 1994). The IMPROVE network uses 24 h filters that are collected every third day. Strengths of the IMPROVE data are the length of the record, the number of sites, and consistent monitoring and analysis techniques (Murphy *et al* 2011). All IMPROVE organic carbon analyzes on quartz-fiber filters were performed at the same laboratory



following the same protocols, as well as consistent calibrations and quality assurance (Chow *et al* 1993).

2.3. Calculation of aridity

Aridity was calculated for each Level 3 ecoregion (Commission for Environmental Cooperation 2005) in the Intermountain West (i.e., Southern Rockies, Wasatch/Uinta Range, Middle Rockies Arizona/New Mexico Mountains) on an annual basis. Aridity data were calculated by water year (1 October–30 September). In this regard, aridity was computed using a product derived exclusively from station observations of precipitation and temperature gridded to a $1/16^\circ$ (~ 6 km) latitude-longitude grid (Livneh *et al* 2015). Potential evapotranspiration (PET) was calculated

from this same data set using a Penman–Monteith approach based on the MT-CLIM preprocessor, contained within the VIC hydrology model (Liang *et al* 1994, Bohn *et al* 2013). We expect that estimates of aridity using this approach will be conservative, as an independent analysis has demonstrated a slight wet bias in MT-CLIM over the western US (Pierce *et al* 2013). We implemented an aridity index most similar to the UNEP (1992) expression that directly relates potential evaporation to precipitation. Other expressions exist, but essentially all express the relationship between moisture and energy availability (e.g. Budyko 1958). Littell *et al* (2016) contend that extended periods of aridity are not necessarily required for increased risk of fire and that anomalous aridity of

30 d or more is sufficient to dry both dead (Cohen and Deeming 1985, Riley *et al* 2013) and live fuels. An assumption of this work is that dry conditions for the entire summer period are suffice to increase fire risk.

2.4. Total fire area burned

A majority of fires occur in the Intermountain western US in the summertime. For example, the fire climatology (1980–1995) presented by Knapp (1998) found that 93% of large fires in the Intermountain western US occurred during the summer months (June, July, August).

Total annual fire area was summed for each Level 3 ecoregion in the Intermountain West. Fire area data were obtained from the Monitoring Trends in Burn Severity (MTBS) program. These data were generated from Landsat surface reflectance measurements using the differenced Normalized Burn Ratio algorithm. Using this algorithm the USGS Center for Earth Resources Observation and Science and US Department of Agriculture-Forest Service Remote Sensing Applications Center has mapped all fires since 1984 greater than 1000 acres (404 hectares) in the Western US (Eidenshink *et al* 2007).

3. Results and discussion

3.1. Aerosol optical depth and aridity

Within mountain ranges of the Intermountain western US, average summertime AOD and aridity exhibit a significant, strong positive correlation (R) (e.g. greater than 95% confidence in the Southern Rockies, Wasatch/Uinta Range, and Arizona/New Mexico Mountains (see table 1).

As an example, figure 1 shows a comparison between AOD for SPL and Sevilleta (SEV) versus spatially distributed regional estimates of surface aridity for the Southern Rockies. There is a strong correlation between aridity and AOD with R of 0.81 and 0.63 for SPL and SEV, respectively ($p < 0.02$).

3.2. Organic aerosol loading and aridity

Twelve high elevation IMPROVE sites in Arizona, Wyoming, Colorado, Montana, and Utah demonstrated a significant correlation [$p < 0.05$] between surface level summertime organic aerosol loading and spatially distributed estimates of aridity (table 1). Of all chemical species in the IMPROVE database, organic aerosol loading had the greatest correlation with aridity. For example, using the aridity product from the Southern Rockies and the IMPROVE dust proxy (Ca) data, a correlation coefficient of less than 0.4 is found at Mount Zirkel Wilderness Area (MOZI), Weminuche Wilderness Area (WEMI) and White River National Forest within Colorado. In comparison, a correlation coefficient greater than 0.65 is found between the aridity product from the Southern

Rockies and the IMPROVE Organic Carbon concentration at these three Colorado sites.

3.3. Organic aerosol loading/AOD and fire area burned

Annual summertime organic aerosol loading and total annual fire area burned within these western mountain ranges as reported by Monitoring Trends in the Burn Severity project, also showed a significant, strong, positive correlation at sixteen IMPROVE high elevation Intermountain West sites (see table 2).

As an example, figure 2 demonstrates the relationship between total fire area burned in the Southern Rockies and average summertime organic aerosol loading at four high elevation IMPROVE sites in Colorado. R values of ranged from 0.63 at Mount Zirkel Wilderness Area (MOZI) to 0.70 at WEMI, respectively ($p < 0.01$), (see table 2).

Sources of anthropogenic organic aerosols include aerosol mass from fossil fuel combustion, biomass burning, along with other human activities that lead to the emission of volatile organic carbon. Additionally, feedbacks between anthropogenic activity (e.g. emission of Sulfur Dioxide) can enhance the formation of biogenic secondary aerosols (Hoyle *et al* 2011). Such sources of organic aerosols, such as rangeland fires, are most likely impacting the OC measurements demonstrated here. That said, significant correlations were observed between fire area burned (in forested regions) and the OC measured at many site within the Intermountain West; thus implying that wildfires are a dominant source of summertime OC in this region.

The correlation between aridity and summertime annual AOD and organic aerosol loading at sites across the Intermountain West are shown in figure 3(a) (white boxes, $p < 0.05$). Figure 3(b) demonstrates the correlation between total annual fire area burned within each of the mountain ranges and summertime annual AOD or organic aerosol loading at each site. Figure 3 clearly denotes the spatial expanse of the impacted area, and the strong regional impact of wildfires on summer organic aerosol loading at high elevation sites on decadal scales. Summertime aerosol loading linked to aridity and fires is found primarily in the Southern Rockies (white boxes in red region, figures 3(a) and (b)). At each of these sites, we found a significant correlation between summertime aerosol loading and aridity/fire area burned. This area of impact is well defined. Sites in the southern expanse of the Arizona and New Mexico Mountains, the Wasatch and Uinta Mountains, and the northern expanse of the Middle Rockies did not show a correlation between aerosol loading and either aridity or fire area burned (dark gray boxes, figures 3(a) and (b)). Wind roses for the 700 hPa level (not shown), calculated from NCEP reanalysis data, indicate that the predominant flow over the southern Rockies is from the southwest. Although the reanalysis data are too coarse to explain

specific site-to-site differences, some general characteristics are apparent. Most of the correlated sites are in the east of this region and the correlations are with the local mountain ranges or ranges to the west and south of the sites, that is, upwind of the prevailing mid-tropospheric flow.

3.4. Future aerosol loading

These results provide quantitative constraints, suitable for evaluating climate model performance, on the influence of aridity and resulting wildfires on aerosol loading. Prior work estimated future wildfire activity and resulting surface level organic aerosol loading across the western US during the mid-21st century based on results from 15 global climate models (GCMs) (Yue *et al* 2013). In these simulations, the 'Rocky Mountain Forest' ecoregion corresponds to the combined area of the Middle Rockies, Southern Rockies, and Wasatch and Uinta Mountain shown in figure 3—representing mainly mixed and/or coniferous forest (Yue *et al* 2013). The GCMs predicted a burned area increase of 2.69 times by the mid-21st century (Yue *et al* 2013). The GEOS-CHEM Chemical Transport Model applied this increased fire area to simulate an increase in the mean summertime concentration of OC aerosol of 46% (Yue *et al* 2013). These simulations were compared to empirical data using a linear regression model of total fire area burned and OC loading given the similarity in fuel type within this region (figures 4(a) and (b) for the Southern Rockies and Uinta Mountains, respectively). The y -intercept from the regression ($\sim 0.9 \mu\text{g m}^{-3}$) represents the background of OC loading outside active wildfires and is in agreement with prior studies (e.g. Hallar *et al* 2013, Yue *et al* 2013). Using the average area burned between 1988 and 2013, the prior predicted increase in fire area (factor of 2.69), and the linear relationships shown in figure 4, we estimated an increase in OC of $24\% \pm 3\%$ and $34\% \pm 3\%$ for the Southern Rockies and Wasatch/Uinta Mountains, respectively, where the uncertainty is the uncertainty of the regression at the mean value of OC. These estimates are nominally lower than current predictions by climate models (Spracklen *et al* 2009, Yue *et al* 2013).

Using the same methodology, the expected mid-21st century change in AOD was calculated with the predicted increase in fire area using the relationships demonstrated in table 2. Considering the summertime AOD from SPL and SEV, we predict a $22\% \pm 6\%$ and $36\% \pm 6\%$ increase in AOD with the 2.69 increase in predicted fire area for the S Rockies and Wasatch/Uinta Mountains, respectively. To our knowledge this is the first estimate of predicted AOD increase due to wildfires at high elevation sites in the western US.

4. Conclusions

The Intermountain West will continue to face significant challenges maintaining mandated visibility requirements faced with a drier climate, as there is a broad consensus among climate modeling results that the Intermountain West will become more arid in the 21st century (e.g. Watson 2002, Seager *et al* 2007, 2013). The results reported here indicate that these changes in climate will have profound impacts on aerosol loading in these pristine places, albeit slightly reduced from prior model estimates. This relative reduction in aerosol loading will diminish the regional cooling effects of aerosols and will lead to a warmer climate than previously predicted.

Acknowledgments and data

We appreciate the capabilities of the USDA UV-B Monitoring and Research Program for data storage and advice. The Steamboat Ski Resort provided logistical support and in-kind donations for Storm Peak Laboratory. The Desert Research Institute is a permittee of the Medicine-Bow Routt National Forests and an equal opportunity service provider and employer. The authors appreciate the effort of Douglas Moore at the Sevilleta Long Term Ecological Research for maintaining the Aeronet site. The research at Sevilleta Long Term Ecological Research is funded by the National Science Foundation (Grant DEB 0832652) and administered by the US Fish and Wildlife Service within the National Wildlife Refuge. IMPROVE is a collaborative association of state, tribal, and federal agencies, and international partners and is funded by the US Environmental Protection Agency, with contracting and research support from the National Park Service. The Air Quality Group at the University of California, Davis, is the central analytical laboratory, with ion analysis provided by the Research Triangle Institute and carbon analysis provided by the Desert Research Institute. The US Department of Agriculture Forest Service (USDA-FS) and the US Geological Survey (USGS) supports the MTBS program. A G H was supported by a sabbatical from DRI to conduct this analysis. N M was supported by USDA grant 2012-67003-19802. K K was supported by NOAA through the Cooperative Institute for Climate and Satellites-North Carolina under Cooperative Agreement NA14NES432003.

References

- Abatzoglou J T and Williams A P 2016 Impact of anthropogenic climate change on wildfire across western US forests *Proc. Natl Acad. Sci.* **113** 11770–5
- Akimoto H 2003 Global air quality and pollution *Science* **302** 1716–9
- Barbero R, Abatzoglou J T, Larkin N K, Kolden C A and Stocks B 2015 Climate change presents increased potential for very large fires in the contiguous United States *Int. J. Wildland Fire* **24** 892–9

- Barnett T P *et al* 2008 Human-induced changes in the hydrology of the western United States *Science* **319** 1080–3
- Bigelow D S, Slusser J R, Beaubien A F and Gibson J H 1998 The USDA ultraviolet radiation monitoring program *Bull. Am. Meteorol. Soc.* **79** 601
- Bohn T J, Livneh B, Oyler J W, Running S W, Nijssen B and Lettenmaier D P 2013 Global evaluation of MTCLIM and related algorithms for forcing of ecological and hydrological models *Agric. Forest Meteorol.* **176** 38–49
- Budyko M I 1958 *The Heat Balance of the Earth's Surface* ed N A Stepanova (Washington, DC: US Department of Commerce) p 259
- Chow J C, Watson J G, Pritchett L C, Pierson W R, Frazier C A and Purcell R G 1993 The DRI thermal/optical reflectance carbon analysis system: description, evaluation and applications in US air quality studies *Atmos. Environ.* **27A** 1185–201
- Cohen J D and Deeming J E 1985 The national fire danger rating system: basic equations *Gen. Technical Report PSW-82* US Department of Agriculture, Forest Service, Pacific Southwest Forest and Range Experiment Station, Berkeley, CA
- Collaud Coen M *et al* 2013 Aerosol decadal trends: I. *In situ* optical measurements at GAW and IMPROVE stations *Atmos. Chem. Phys.* **13** 869–94
- Commission for Environmental Cooperation 2005 *Ecological Regions of North America, Level 3, Scale 1:4 000 000 (Montreal, Quebec, Canada)*
- Dennison P E, Brewer S C, Arnold J D and Moritz M A 2014 Large wildfire trends in the western United States, 1984–2011 *Geophys. Res. Lett.* **41** 2928–33
- Diffenbaugh N S, Ashfaq M, Shuman B, Williams J W and Bartlein P J 2006 Summer aridity in the United States: response to mid-Holocene changes in insolation and sea surface temperature *Geophys. Res. Lett.* **33** L22712
- Eidenshink J, Schwind B, Brewer K, Zhu Z, Quayle B and Howard S 2007 A project for monitoring trends in burn severity *Fire Ecol.* **3** 3–21
- Hallar A G *et al* 2013 Chemical and hygroscopic properties of aerosol organics at storm peak laboratory *J. Geophys. Res.* **118** 4767–79
- Hallar A G *et al* 2015 Contributions of dust and biomass burning to aerosols at a Colorado mountain-top site *Atmos. Chem. Phys.* **15** 13665–79
- Hand J L, Schichtel B A, Malm W C and Frank N H 2013 Spatial and temporal trends in PM_{2.5} organic and elemental carbon across the United States *Adv. Meteorol.* **2013** 367674
- Hand J L, Schichtel B A, Malm W C, Copeland S, Molenaar J V, Frank N and Pitchford M 2014 Widespread reductions in haze across the United States from the early 1990s through 2011 *Atmos. Environ.* **94** 671–9
- Harrison S P A, Kutzbach J E, Liu Z, Bartlein P J, Otto-Bliesner B, Muhs D, Prentice I C and Thompson R S 2003 Mid-Holocene climates of the Americas: a dynamical response to changed seasonality *Clim. Dyn.* **20** 663–88
- Holben B N *et al* 1998 AERONET—A federated instrument network and data archive for aerosol characterization *Remote Sens. Environ.* **66** 1–16
- Hoyle C R *et al* 2011 A review of the anthropogenic influence on biogenic secondary organic aerosol *Atmos. Chem. Phys.* **11** 321–43
- IPCC, Climate Change 2013 *The Physical Science Basis. Contribution of Working Group I to the Fifth Assessment Report of the Intergovernmental Panel on Climate Change* ed T F Stocker *et al* (Cambridge: Cambridge University Press)
- Kanakidou M *et al* 2005 Organic aerosol and global climate modelling: a review *Atmos. Chem. Phys.* **5** 1053–123
- Knapp P A 1998 Spatio-temporal patterns of large grassland fires in the Intermountain West, USA *Glob. Ecol. Biogeogr. Lett.* **7** 259–72
- Liang X, Lettenmaier D P, Wood E F and Burges S J 1994 A simple hydrologically based model of land surface water and energy fluxes for general circulation models *J. Geophys. Res.: Atmos.* **99** 14415–28
- Littell J S, Peterson D L, Riley K L, Liu Y and Luce C H 2016 A review of the relationships between drought and forest fire in the United States *Glob. Change Biol.* **22** 2353–69
- Liu J C, Mickley L J, Sulprizio M P, Dominici F, Yue X, Ebisu K, Anderson G B, Khan R F, Bravo M A and Bell M L 2016 Particulate air pollution from wildfires in the Western US under climate change *Clim. Change* **138** 655–66
- Livneh B *et al* 2015 A spatially comprehensive, hydrometeorological data set for Mexico, the US, and Southern Canada 1950–2013 *Sci. Data* **2**
- Malm W C, Sisler J F, Huffman D, Eldred R A and Cahill T A 1994 Spatial and seasonal trends in particle concentration and optical extinction in the United States *J. Geophys. Res.: Atmos.* **99** 1347–70
- McKenzie D and Littell J S 2016 Climate change and the eco-hydrology of fire: will area burned increase in a warming western US? *Ecol. Appl.* (doi:10.1002/eap.1420)
- Mote P W, Hamlet A F, Clark M P and Lettenmaier D P 2005 Declining mountain snowpack in western North America *Bull. Am. Meteorol. Soc.* **86** 39
- Murphy D M *et al* 2011 Decreases in elemental carbon and fine particle mass in the United States *Atmos. Chem. Phys.* **11** 4679–86
- Pierce D W, Westerling A L and Oyler J 2013 Future humidity trends over the western United States in the CMIP5 global climate models and variable infiltration capacity hydrological modeling system *Hydrol. Earth Syst. Sci.* **17** 1833–50
- Riley K L, Abatzoglou J T, Grenfell I C, Klene A and Heinsch F A 2013 The relationship of large fire occurrence with drought and fire danger indices in the western USA, 1984–2008: the role of temporal scale *Int. J. Wildland Fire* **22** 894–909
- Seager R *et al* 2007 Model projections of an imminent transition to a more arid climate in southwestern North America *Science* **316** 1181–4
- Seager R, Ting M, Li C, Naik N, Cook B, Nakamura J and Liu H 2013 Projections of declining surface-water availability for the southwestern United States *Nat. Clim. Change* **3** 482–6
- Seinfeld J H and Pandis S N 2012 *Atmospheric Chemistry and Physics: from Air Pollution to Climate Change* (New York: Wiley)
- Solomon S *et al* 2011 *Climate Stabilization Targets: Emissions, Concentrations, and Impacts Over Decades to Millennia* (Washington, DC: Natl. Acad. Press)
- Spracklen D V, Mickley L J, Logan J A, Hudman R C, Yevich R, Flannigan M D and Westerling A L 2009 Impacts of climate change from 2000 to 2050 on wildfire activity and carbonaceous aerosol concentrations in the western United States *J. Geophys. Res.: Atmos.* **114** D20301
- UNEP 1992 *World Atlas of Desertification* (Seven Oaks, UK: Edward Arnold)
- Watson J G 2002 Visibility: science and regulation *J. Air Waste Manage. Assoc.* **52** 628–713
- Westerling A L, Hidalgo H G, Cayan D R and Swetnam T W 2006 Warming and earlier spring increase western US forest wildfire activity *Science* **313** 940–3
- Yue X *et al* 2013 Ensemble projections of wildfire activity and carbonaceous aerosol concentrations over the western United States in the mid-21st century *Atmos. Environ.* **77** 767–80
- Zhang Q *et al* 2007 Ubiquity and dominance of oxygenated species in organic aerosols in anthropogenically-influenced Northern Hemisphere mid-latitudes *Geophys. Res. Lett.* **34** L13801