



OPEN

DATA DESCRIPTOR

Robotic monitoring of forests: a dataset from the EU habitat 9210* in the Tuscan Apennines (central Italy)

Mathew J. Pollayil ¹, Franco Angelini ¹✉, Leopoldo de Simone ², Emanuele Fanfarillo ^{2,3}, Tiberio Fiaschi ², Simona Maccherini ^{2,3}, Claudia Angiolini ^{2,3} & Manolo Garabini ¹

Effective monitoring of habitats is crucial for their preservation. As the impact of anthropic activities on natural habitats increases, accurate and up-to-date information on the state of ecosystems has become imperative. This paper presents a new dataset collected from the forests located in the Tuscan Apennines (Italy) using the ANYmal robot. The dataset provides information regarding the structure and composition of the EU priority habitat 9210*. The dataset, which is publicly available through a Zenodo repository, includes photos, videos, and point clouds of the environment. This dataset is a valuable resource for the scientific community working in the field of forest ecology and conservation and has the potential to inform future research and conservation efforts on habitat 9210*. The collaboration between robotic engineers and plant scientists provides a unique perspective on the forest ecosystem and underscores the potential for interdisciplinary work in this field. This dataset constitutes an important contribution to the ongoing effort to monitor and conserve habitats globally, particularly in light of the challenges posed by global changes.

Background & Summary

Regularly monitoring habitats is becoming increasingly important for preserving biodiversity through evaluating the conservation status of the habitat itself and the attainment of conservation targets. Indeed, the Directive 92/43/EEC of the European Council (Habitats Directive¹) requests that member countries periodically carry out such monitoring campaigns. It also established a network of critical habitats for rare and endangered species, including certain uncommon natural habitat types that are protected in their own right: the Natura 2000 network^{2–4}. On land and at sea, it crosses all 27 member states of the European Union. The network's goal is to protect the most priceless and imperiled species and habitats in Europe for the long run. As far as habitats of community interest are concerned, the need for extensive monitoring is urgent. This is especially true for forest habitats, which occupy over 50% of the surface of Special Areas of Conservation (SACs) within the Natura 2000 network⁵.

In this work, we focus on beech forests, which represent key habitats under the Natura 2000 network. Our study case is on beech forests located in the Apennine mountain chain (central Italy), considered the most diverse and species-rich in the European Union⁶. In particular, we studied habitat “9210(*) Apennine beech forests with *Taxus* and *Ilex*”, listed as of priority interest for conservation in the Annex I of the EU Habitats Directive. Anthropogenic pressures such as the intensification of silvicultural management and climate change with increasing temperatures and drought are threatening the maintenance of such forests in a good conservation status in central Apennines^{7–10}, as required by the Directive 92/43/EEC. For such reasons, there is the need to develop new and repeatable monitoring strategies that take account of the many indicators of the conservation status and naturalness of beech forests, such as their floristic composition, structural features like the dimensions of trees and the amount of dead wood, and the amount of litter, mosses, and lichens⁵. The complex and fundamental task of monitoring forest habitats of community interest requires a high level of botanical expertise and

¹Centro di Ricerca “Enrico Piaggio”, and Dipartimento di Ingegneria dell’Informazione, Università di Pisa, Largo Lucio Lazzarino 1, 56122, Pisa, Italy. ²Department of Life Sciences, University of Siena, Via Mattioli, 4, 53100, Siena, Italy.

³NBFC, National Biodiversity Future Center, 90133, Palermo, Italy. ✉e-mail: frncangelini@gmail.com

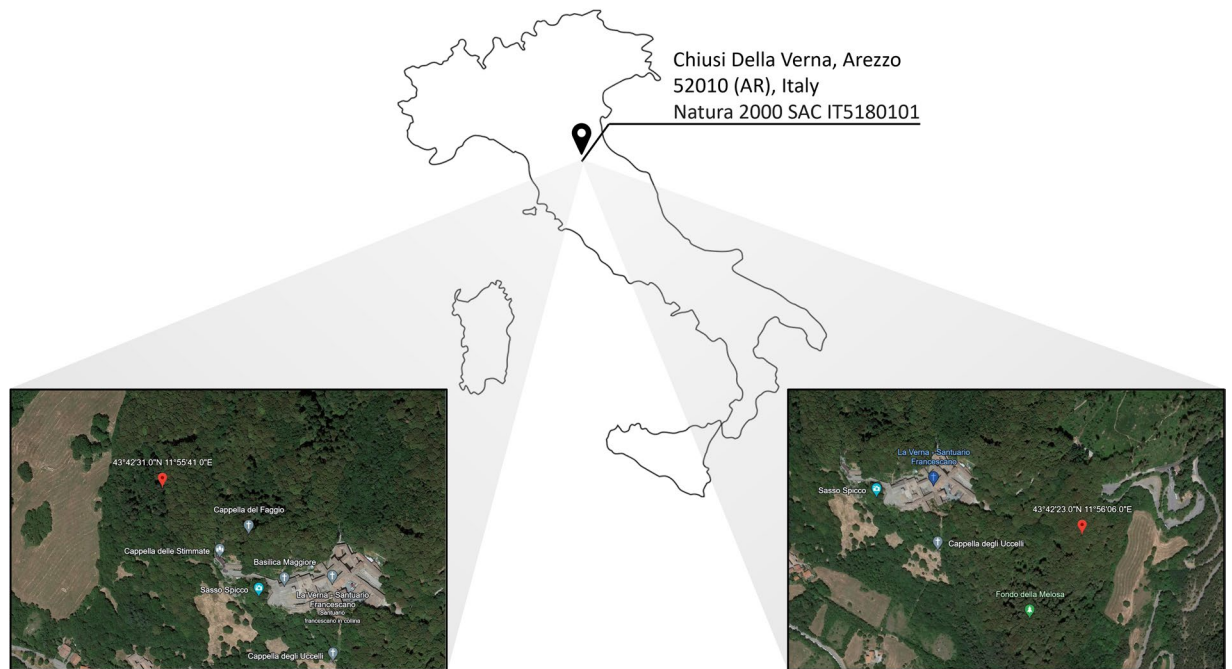


Fig. 1 The location in which the data presented in this paper were collected: Chiusi della Verna, Tuscany, Italy. Two inserts depict the more precise locations.

knowledge, plus the ability to move for hours in wild unstructured environments. Nowadays, this task can be carried out only by highly trained human operators. This process implies high costs in terms of economic and human resources for the EU Countries. In light of these considerations, the European Union project Natural Intelligence aims at improving human monitoring abilities through the introduction of robotic workforce. We use legged robots in particular to collect data on the habitat in a manner that closely resembles surveys done by humans.

The habitat 9210* includes thermophilous beech forests harbouring many endemics and characterized by a tree layer dominated by *Fagus sylvatica* and a herbaceous layer composed of nemoral species¹⁰. The assessment of the conservation status of this habitat can be performed through the measurement of parameters related to its structure and function, such as dendrometric data, floristic data, and identification of typical species^{11–14}. Some key indicators of favourable conservation status of this habitat are herbaceous sciophilous-nemoral species (i.e., geophytes of the genera *Anemonoides*, *Gagea*, *Corydalis*^{15,16}). For instance, the increase of shade-tolerant species (mostly geophytes) was reported for unmanaged and ancient forests^{17,18}. On the other hand, early warning species indicating the occurrence of climate change phenomena, such as increasing temperatures and/or drought, as well as of the intensification of silvicultural management, are considered as indicators of a non-favourable conservation status. In the Apennine sites of the habitat 9210*, typical examples of the latter case are the occurrence of meso-thermophilous species linked to woodlands of the hilly belt, such as *Cyclamen hederifolium*, *Primula vulgaris*, *Viola alba* subsp. *denhardtii*, and/or of species related to open habitats, such as *Brachypodium genuense*, *B. rupestre*, *Festuca* sp. pl., and *Sesleria* sp. pl.^{16,19}. Several other indicators are needed to define the conservation status of the habitat (HD, art. 17¹²); including vegetation cover, amount of bare soil, rocks, stones, presence/abundance of typical and early warning species, and structural data, such as tree diameter at breast height and tree height. These can be used as indicators of the ecological and dynamic differences between *F. sylvatica* forests and to evaluate the structure and functions of the habitat 9210*. The collection of field data is pivotal for the assessment of the conservation status of habitats.

In this data paper, we present the data gathered in a beech forest of Tuscany, central Italy (Fig. 1). This data has been collected using the quadrupedal robot ANYmal C²⁰ (Fig. 2) by a group of plant experts and robotics engineers during habitat monitoring missions. The collected data is divided into four groups: (i) photos of indicator plant species of the forest habitat, which are either typical or early warning species, (ii) three-dimensional data about the monitored areas, (iii) photos, videos, and robot information during autonomous robotic monitoring missions, and (iv) during human-operated robotic monitoring missions. We have already presented a similar dataset for grassland habitat 6210* in²¹.

Researchers from a variety of disciplines can benefit from using this dataset because of its multidisciplinary scope. On the one hand, robotic engineers could, for instance, benchmark the performance of the robots and test or validate their own methods using the point clouds and the information about the robot state. On the other hand, botanists could evaluate the accuracy of this data as well as the habitat's conditions using the plant videos and images that the robot captured, or computer scientists could test their AI algorithms for identifying and classifying different species using these data.

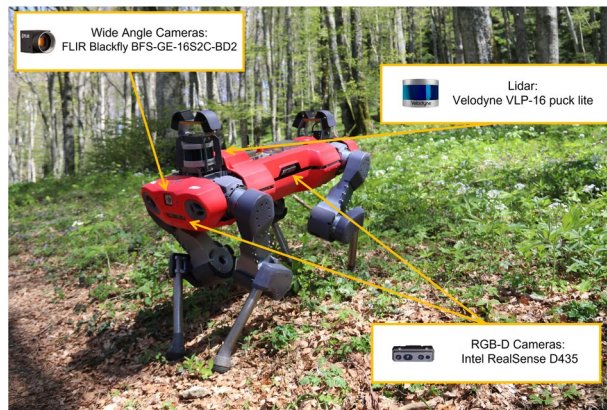


Fig. 2 The robot ANYmal C in habitat 9210*. The sensors employed for data gathering are one Velodyne VLP-16 puck lite, two FLIR Blackfly BFS-GE-16S2C-BD2 wide angle cameras, and four Intel RealSense D435 RGB-D cameras.

Methods

We acquired the data in Chiusi della Verna, Tuscany, central Italy, on the 27th and the 28th of April, 2022. This location is within the Natura 2000 network, SAC IT5180101, La Verna-Monte Penna, within the National Park Foreste Casentinesi, Monte Falterona e Campigna (Fig. 1). The choice of the days was based on the blooming period of the studied indicator species, which is from March to May. A team of both robotic engineers and plant scientists employed the robot ANYmal C²⁰ (Fig. 2), produced by ANYbotics AG, for data acquisition. This quadrupedal robot can collect information regarding the habitat using its on-board sensor while navigating the forest in both an autonomous or teleoperated way. Four Intel RealSense D435 RGB-D cameras (<https://www.intelrealsense.com/depth-camera-d435/>) are placed one per side of the robot body and can capture images in Full HD resolution and/or record videos of the same resolution with 30 fps. Additionally, a Velodyne VLP-16 puck lite LiDAR (<https://velodynelidar.com/products/puck-lite/>) is mounted on the rear-top part of the robot body allowing it to acquire a 3D map of the surrounding environment. ANYmal also mounts two wide angle FLIR Blackfly BFS-GE-16S2C-BD2 cameras. These, however, were not used in the present work for gathering data. Data concerning the state of the robot during habitat data harvesting are saved as ROS bag files through the dedicated ROS interface of the robot. Details about ROS bag files can be found on the official documentation (<http://wiki.ros.org/rosbag>). Plot position was recorded using a portable GPS (Garmin Colorado 300) to assist future relocation of the plot, consistently with European Habitat and vegetation monitoring protocols^{11,22}. For each plot, georeferencing was performed with at least 10 m of positional accuracy, which is defined as the value of the radius of the circle of unknown around the true position. During our survey, the measured accuracy (10 m) was larger than the common values of GPS accuracy because of the presence of tree canopy in forest environments^{23–25}. Although a cm-level accuracy would be more desirable to precisely relocate individual plots in repetitive surveys to obtain a network of permanent plots, our values of location accuracy suffice for most habitat and vegetation resurveying studies, e.g., quasi-permanent resurveys^{26,27}.

Prior to field sampling, we identified in a GIS environment the polygons where the habitat 9210* covers 70% or more in the SAC, based on a detailed habitat map produced by the HaSCITu project (Habitat in the Sites of Conservation Interest in Tuscany²⁸). In such locations, data acquisition and assessment of the habitat conservation status are routinely carried out by trained botanists. Once in the field, we selected two suitable sites within the forest. Suitability was assessed based on the accessibility to both humans and the robot. This is because, despite the impressive mobility of the robot ANYmal C, safe locomotion is guaranteed only within some operational limits. An exhaustive description of these limits is out of the scope of this paper, however, we report a few examples: the slope of the terrain should not be greater than 30°, gaps in the terrain should not be bigger than 30 cm, and the maximum stepping height should be less than 25 cm. For more details on the robot's operational limits, please refer to the producer website (<https://www.anybotics.com/anymal-specifications-sheet/>).

The dataset provided through this paper is comprised of four sets of data: (i) species data, (ii) 3D mapping data, (iii) autonomous monitoring mission data, and (iv) teleoperated monitoring mission data. The methods of acquisition of these are described in the following sections.

Species data. This first part of the provided dataset is composed of photos of four different indicator species, which are divided into three typical species of the habitat 9210*²⁹, and one early warning species. The typical species are *Anemonoides nemorosa* (L.) Holub (Ranunculaceae), *Anemonoides ranunculoides* (L.) Holub (Ranunculaceae), and *Corydalis cava* (L.) Schweigg. & Körte (Papaveraceae). The early warning species is *Primula vulgaris* Huds. (Primulaceae), an indicator of increasingly warmer and drier conditions in beech forests. Species nomenclature follows the World Flora Online portal³⁰. In Table 1, we summarize the number of photos per species contained in the dataset.

All the selected plant species are herbs growing in the understory of mesic forests, and the three typical species are especially related to beech forests representing the habitat 9210*. They typically flower in early spring (March to May), before tree leaves are fully developed, to take advantage of the optimum of light availability in

Name	Type	# Photos
<i>Anemonoides nemorosa</i> (L.) Holub (Ranunculaceae)	Typical species	101
<i>Anemonoides ranunculoides</i> (L.) Holub (Ranunculaceae)	Typical species	39
<i>Corydalis cava</i> (L.) Schweigg. & Körte (Papaveraceae)	Typical species	80
<i>Primula vulgaris</i> Huds. (Primulaceae)	Early warning species	39

Table 1. The four indicator species (family) of the habitat 9210* and the number of photos for each of them.



Fig. 3 The four typical species of habitat 9210*. These pictures were taken by the on-board cameras of the robot.

the forest habitat. *A. nemorosa* is a rhizomatous geophyte distributed in temperate to cold regions of Eurasia and North America. Flowers are single, with white petals and yellow anthers, and leaves are compound-palmate. *A. ranunculoides* is a rhizomatous geophyte as well, but its distribution is limited to Europe. Flowers are often single or rarely 2–5 per stem, with bright yellow petals and anthers and compound-palmate leaves. *C. cava* is a bulbous geophyte distributed in Europe. Flowers are gathered in raceme inflorescences including 5–50 elements, with white to purple petals. Leaves are pinnate-compound. *P. vulgaris* is a hemicryptophyte with a European distribution. Stemless, with yellow petals, and whole, spatulate leaves gathered in a basal rosette. Compared to the three typical species, *P. vulgaris* usually lives in many other types of mesic forests and their margins³¹ and is typical of hilly mesophilous woods with tree canopy dominated by *Carpinus betulus* and/or *Quercus cerris*³²; in beech forests, it can be considered an indicator of xero-thermophilous conditions.

The data acquisition was as follows: firstly, the plant scientists followed the guidelines in³¹ to identify the aforementioned indicator species. Subsequently, a roboticist guided the robot in teleoperated mode, stopping it facing the identified instance of species. Notice that one or more instances of the four indicator species may have been present in front of the robot at this time. Hence, a photo of a particular species contains at least one instance of it. Table 1 reports the number of photos per species contained in the provided dataset. These numbers roughly reflect the abundance of species in the chosen location within habitat 9210*. An example for each of the four indicator species mentioned before is shown in Fig. 3.

3D Mapping data. This second part of the data is made of three-dimensional spatial data provided in the form of point clouds, obtained using the LiDAR sensor. These describe, in dimension and shape, the environment surrounding the robot, while it is teleoperated by a human. The robot is positioned in a randomly chosen area and GPS data, date, and weather information are recorded. These are relevant, also for the later described monitoring mission data, in order to fairly compare data against past and future surveys. Subsequently, the mapping procedure is started from ANYmal's ROS Graphical User Interface. Then, the robot is teleoperated to locomote

Topic Name	Description	M	A	T
/state_estimator/anyamal_state	Robot info, e.g., base position [m] and orientation [rad], joint position [rad], velocity [rad/s], acceleration [rad/s ²], and torque [Nm].	✓	✓	✓
/log/state/current/LF_HAA	Current [A] of the hip adduction/abduction joint of the left fore leg	✓	✓	✓
/log/state/current/LF_HFE	Current [A] of the hip flexion/extension joint of the left fore leg	✓	✓	✓
/log/state/current/LF_KFE	Current [A] of the knee flexion/extension joint of the left fore leg	✓	✓	✓
/log/state/current/LH_HAA	Current [A] of the hip adduction/abduction joint of the left hind leg	✓	✓	✓
/log/state/current/LH_HFE	Current [A] of the hip flexion/extension joint of the left hind leg	✓	✓	✓
/log/state/current/LH_KFE	Current [A] of the knee flexion/extension joint of the left hind leg	✓	✓	✓
/log/state/current/RF_HAA	Current [A] of the hip adduction/abduction joint of the right fore leg	✓	✓	✓
/log/state/current/RF_HFE	Current [A] of the hip flexion/extension joint of the right fore leg	✓	✓	✓
/log/state/current/RF_KFE	Current [A] of the knee flexion/extension joint of the right fore leg	✓	✓	✓
/log/state/current/RH_HAA	Current [A] of the hip adduction/abduction joint of the right hind leg	✓	✓	✓
/log/state/current/RH_HFE	Current [A] of the hip flexion/extension joint of the right hind leg	✓	✓	✓
/log/state/current/RH_KFE	Current [A] of the knee flexion/extension joint of the right hind leg	✓	✓	✓
/pdb/battery_state_ros	Battery information, e.g., charge percentage, voltage [V], current [A].	✓	✓	✓
/path_planning_and_following/navigate_to_goal/result	Info on the success (or failure) of the robot in reaching the desired navigation goal	✗	✓	✗
/path_planning_and_following/trajectory_poses	The planned Cartesian poses (waypoints) tracked by the robot to reach the goal	✗	✓	✗
/path_planning_and_following/active_path	The actual Cartesian path through the waypoints followed by the robot to reach the goal	✗	✓	✗
/tf	Coordinate frames and transformations between them (TFs) (http://wiki.ros.org/tf2)	✓	✓	✓

Table 2. The list of ROS topics from which we saved the data presented in this paper. The last three columns specify if the topic has been saved during the mapping procedure (M), the autonomous mission (A), and the teleoperated mission (T).

Type	Name	Date	Time	Weather	Latitude	Longitude
3D Mapping	Mapping 1	27 April 2022	15:35	Sunny	43°42'23"N	11°56'06"E
	Mapping 2	27 April 2022	16:04	Sunny	43°42'23"N	11°56'06"E
	Mapping 3	28 April 2022	18:15	Sunny	43°42'31"N	11°55'41"E
Autonomous Monitoring	Mission 1	27 April 2022	16:21	Sunny	43°42'23"N	11°56'06"E
Teleoperated Monitoring	Mission 1	28 April 2022	18:36	Sunny	43°42'31"N	11°55'41"E

Table 3. Date, time, weather information, and georeferencing information of the 3D mappings, the autonomous and the teleoperated monitoring missions.

forward for 4 m, perform a 180° turn and return to the initial position. Finally, the mapping is stopped from the GUI and the point cloud data is saved. A video was recorded for each of the mapping procedures using the Canon Reflex camera in order to have a visual record. We also save information about the status of the robot during the mapping procedure using the ROS interface. Table 2 reports the ROS topics (<http://wiki.ros.org/rostopic>) recorded to store the information about the robot status. These are saved in ROS bag files (<http://wiki.ros.org/rosbag>). In particular, the status information about the robot comprises of its base position and velocity, joint positions, velocities, and accelerations, joint torques and currents, and the battery charge.

In this data paper, we provide three mappings of locations in the forests of Chiusi Della Verna. Some details of these acquisitions are briefly described in the first three rows of Table 3.

Autonomous monitoring mission data. This third part of the dataset relates to the autonomous monitoring mission carried out using the robot in Chiusi Della Verna. Robotic monitoring was carried out in correspondence to the plots used by plant scientists for their sampling. Then, georeferencing data (GPS coordinates) and weather data are noted. As mentioned before, these enable rigorous comparisons with past or future monitoring missions. Additionally, weather data can also be used to estimate sun light.

The autonomous monitoring makes use of a previously acquired 3D map of the environment to allow the robot to localize itself in the forest. In the case of the presented autonomous mission, a map acquired during the 3D mapping procedure described in the previous section is used. We do not record point cloud data during the execution of the mission since this would not provide valuable information with respect to the previous mapping. Then, the robot attempts to take detailed and close-up photos and videos of the flora at regular intervals. In order to do so, it moves, within an area of $4 \times 4 \text{ m}^2$, along waypoints on a zig-zag like path starting from the bottom right corner of the square towards the top left corner. See Fig. 4a for a visual representation of this path. The robot reaches each waypoint with the same initial orientation, it stops, and takes four photos (one per each of the four RGB-D cameras). The same four cameras also record videos of the whole mission. Additionally, ROS

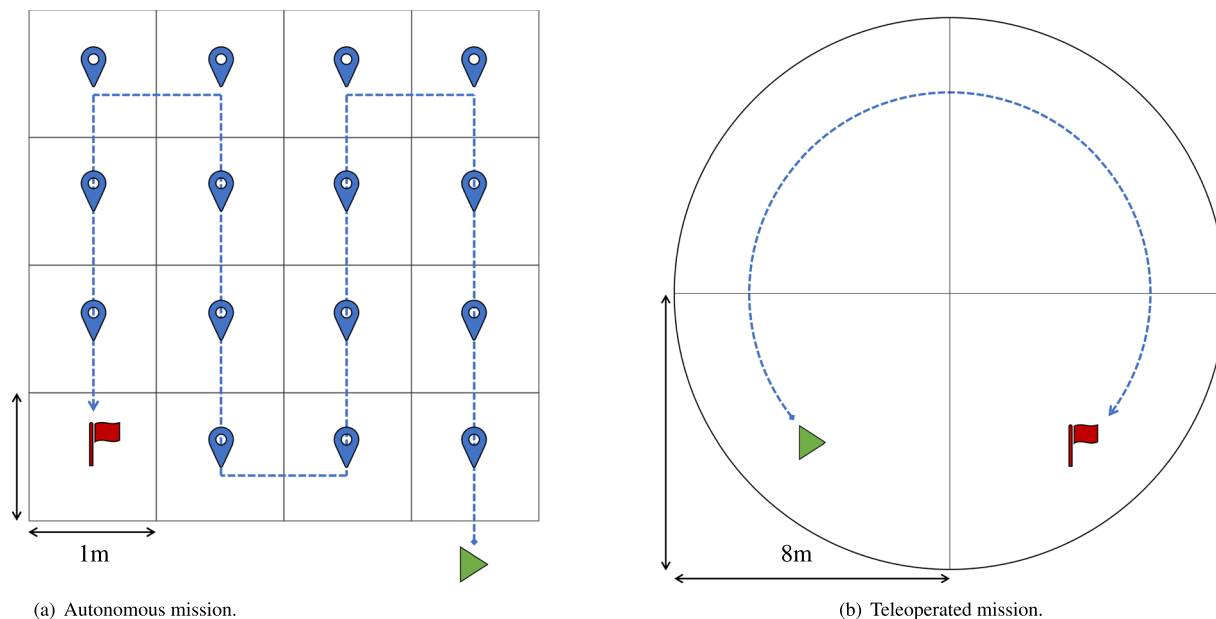


Fig. 4 Motion of the robot during the (a) autonomous and (b) teleoperated monitoring missions. The robot starts from the green triangle and reaches the final goal (red flag) following the directed dashed blue path. The four cameras of the robot record the mission video and the robot status is saved in ROS bag files.

bags of the robot status information and external videos using the Canon Reflex camera are also saved. For this autonomous mission, Table 2 reports the ROS topics recorded to store not only the information about the robot status, but also the ones about reaching the navigation waypoints.

We report some more information about this monitoring mission on the fourth row of Table 3.

Teleoperated monitoring mission data. The last part of the presented data regards the teleoperated mission. In this case, a circular plot with a radius of 8 m was placed. This plot shape is commonly used to survey forest plant communities, as it offers numerous benefits. It is easily established, it provides a straightforward means to determine whether a tree falls within the plot, and it contains fewer trees along its edges compared to other plot shapes with equivalent area³³. In repetitive surveys or when used in remote sensing applications, the circular plot offers the operational convenience of needing the location of only its central point to be recorded³⁴. The robot starts from the border of the circle. A roboticist guides the robot in teleoperated mode in a clockwise direction (see Fig. 4b) and stops the robot at regular intervals of one metre to take photos using the four on board cameras. This procedure continues until images of the whole area have been acquired. Moreover, the robot also records the whole video of the monitoring. Together with this, a ROS bag file saving the status of the robot and an external video are also recorded. Here, since the robot is moving in teleoperation, no mapping is required.

The last row of Table 3 reports additional information about this teleoperated mission. Similarly to the autonomous mission, Table 2 reports recorded ROS topics. These are the same as for the mapping procedures.

Data Records

The data are available on Zenodo³⁵ at <https://doi.org/10.5281/zenodo.10013693>. We also provide example code to extract and analyse the ROS bag files on Zenodo³⁶ and GitHub³⁷. The four sets of data that we provide are structured as in the tree in Fig. 5. Each of the four subtrees contains a README.txt file that describes the corresponding set of data. The first set is Species Data, and it comprises a folder for the pictures of the typical and early warning plant species found in the surveyed habitat 9210*. Table 1 reports the number of pictures for each of the four indicator species studied in this set of data.

The second set, 3D Mapping Data, is a collection of 3D mappings saved as point clouds and the associated videos. These are contained in two separate folders, namely Point Clouds and Mapping Videos.

The third and fourth sets, Autonomous and Teleoperated Monitoring Mission Data, contain all the information collected during the monitoring missions performed by the robot. Folders contain the recorded videos, the multimedia data from the robot, and robot status.

Data formats. In the following sections, we provide some technical details about the file formats of the data.

.jpg. This standard image file format can be opened and viewed by commonly available image viewing software on all major operating systems. In this dataset, the pictures collected by the robot during the monitoring missions and the species data photos are in this particular jpg format.

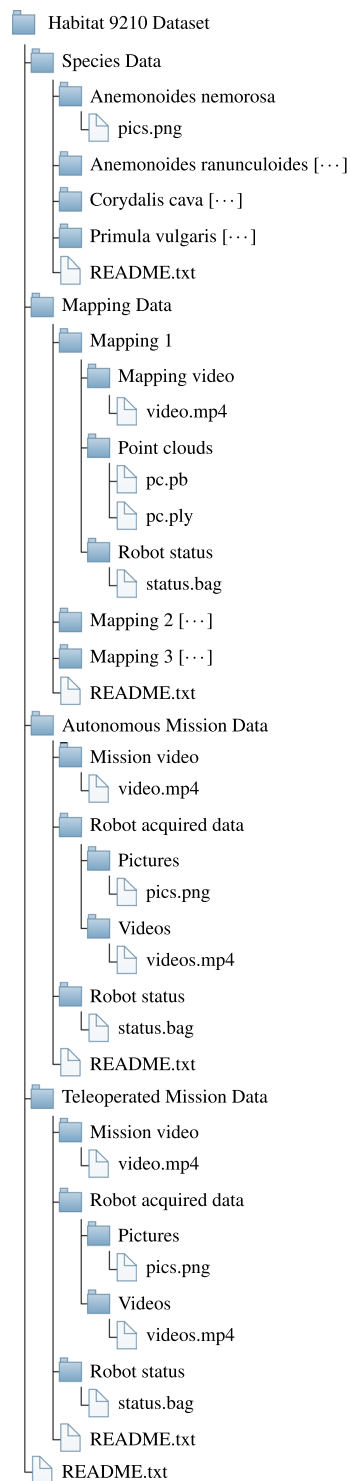


Fig. 5 The directory structure tree of the dataset presented in this paper. The symbol [...] next to a folder name indicates that its subtree is similar to the previous same-level folder.

.mp4 and .avi. These two standard video file formats can also be opened and watched by commonly available video players on all major operating systems. In this dataset, the videos recorded by the on-board cameras of the robot are in avi format, while the ones recorded using the Canon Reflex camera are in mp4 format.

.ply and .pb. Three-dimensional mapping data are stored as point clouds in two of the most used formats: ply and pb. The former is the so called Polygon File Format (ply). It is a standard file extension for 3D models that can be opened using 3D modelling software, e.g., MeshLab, or by more common math processing tools, such as MATLAB (<https://www.mathworks.com/products/matlab.html>). The latter format (pb) is, instead, the most

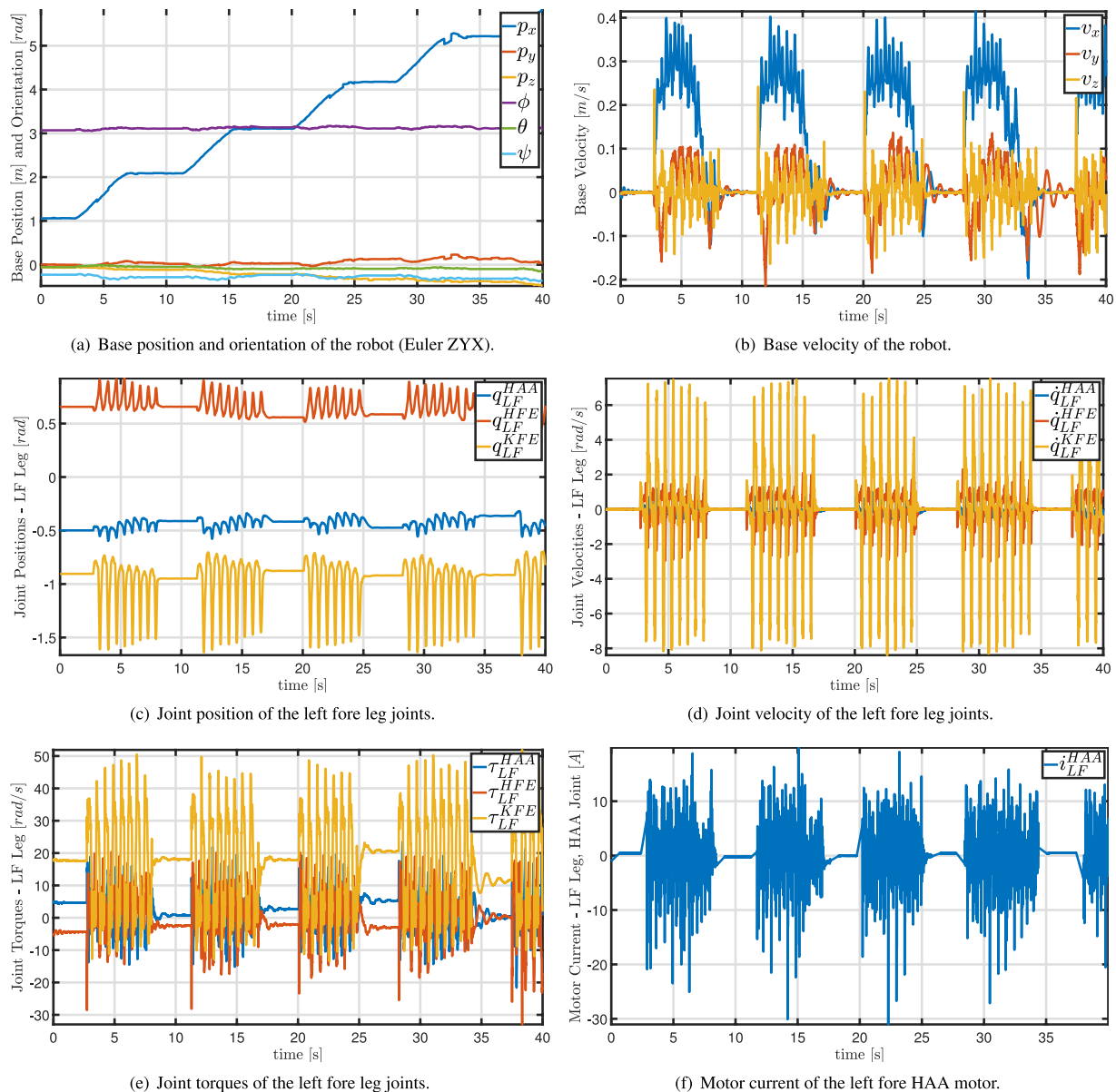


Fig. 6 Plots of the extracted data from the ROS bag of the autonomous mission described in this paper (see folder *Autonomous Mission* in Fig. 5). Therein, the robot moved as shown in Fig. 4. Only an eighth of the entire mission (40 s out of 320 s) is plotted for the better image clarity.

wide-spread point cloud format within ROS, in particular in ANYmal research (<https://www.anymal-research.org/>). We provide both formats to ease users with handling 3D mappings.

.bag. Bag files are used in ROS for storing message data flowing in ROS topics (<http://wiki.ros.org/rostopic>). A list of the topics that were saved in the ROS bags provided herein is available in Table 2. These topics transmit the data and information read from the robot and, hence, the bag files save them in suitable structures. The website of ANYmal Research (<https://www.anymal-research.org/>) is to be referred for more details about the on board sensors and the data output from them through the ROS interface. Figure 6 shows some of these measured quantities during the above mentioned autonomous mission. Within ROS a variety of tools exist for extracting, visualizing and analysing the data stored in bag files. For researchers outside robotics, MATLAB (<https://www.mathworks.com/products/matlab.html>) could be a valid alternative to handle this type of files.

Technical Validation

Both the team of robotic engineers — Franco Angelini (FA), Mathew Jose Pollayil (MJP), and Manolo Garabini (MG) — and plant scientists — Leopoldo de Simone (LDS), Emanuele Fanfarillo (EF), Tiberio Fiaschi (TF), Simona Maccherini (SM) and Claudia Angiolini (CA) — provided quality assurance during the fieldwork. Each author monitored the data collection and carefully checked the final dataset for errors and inconsistencies.

It is also important to note that the supplied data are provided in their raw form without any post-processing that can compromise their validity. A number of decisions that are specifically discussed in the following ensure the consistency of the data collection.

Area selection. The area to be surveyed has been selected by plant scientists with a high degree of expertise on the local flora and vegetation. The forest in La Verna-Monte Penna (SAC IT5180101), within the National Park Foreste Casentinesi, Monte Falterona e Campigna in Chiusi della Verna, Arezzo 52010 (AR), Tuscany, Italy, is part of the Natura 2000 network, and it is a good example of the EU Annex I Habitat “9210(*) Apennine beech forests with *Taxus* and *Ilex*”.

Time selection. The dates of the surveys, i.e., the 27th and the 28th of April 2022, were suggested by the plant scientists according to the ideal time to monitor the indicator species of habitat 9210* in their full bloom. This is because the period from March to May is known to be the blooming period of the studied indicator species.

Species data validity. The selection of the indicator species for habitat 9210* has been carried out in accordance with the EU guidelines of international journals³⁰, as mentioned in the Methods section. The photos of the plants were selected and attributed to species following the recommendations by plant scientists.

Mapping data validity. The data saved by the robot during mapping is provided raw without any processing. Its validity is ensured by the absence of any localization issues signaled by the robot after this procedure since the saved map is used by ANYmal to localize itself in the environment using Simultaneous Localization and Mapping (SLAM) algorithm.

Monitoring data validity. The validity of the data collected during monitoring missions is ensured by the methodologies used to conduct them, which are based on guidelines from manuals and scientific articles^{11,38}. The robot carefully performs relev  by following the same procedures adopted by the plant scientists, hence, complying with these guidelines. Moreover, the robot signals possible failures in acquiring data. No such event occurred during the performed missions. Finally, since the data are provided without any modifications for analyses, no post-processing related corruption is possible.

Database validity. The database has been produced successively to the completion of data collecting. We added only valid and non-corrupt data. Both teams meticulously revised each entry of the database to ensure its validity. The plant experts verified each image and video of the dataset, in particular the classification performed in the section “Species Data”. Similarly, the robotic engineering team double checked the point clouds and robot status data by inspecting them and running test scripts to ensure their legitimacy.

Usage Notes

The usefulness of the provided data lies in its multidisciplinary scope. Both robotic and botanical research can benefit from the images and videos presented in this paper. For instance, machine learning techniques can be employed to detect and classify the flora; this can aid robotic locomotion in planning optimal paths and plant researchers to assess the health status of the species. All European Countries must carry out habitat monitoring campaigns every six years, and our dataset can be used to assess the effectiveness of conservation measures and the achievement of conservation targets. Moreover, the provided data will be useful for a wide range of researchers in botany, ecology, and forestry. For instance, potential uses are: (i) detailed mapping of the distribution of plant individuals; (ii) measurements of plant abundance with a high degree of accuracy and precision; (iii) assessment of the health status of the plants; (iv) measurements of plant morpho-functional traits; (v) recording of phenological observations (e.g., date of flowering and fruiting, abundance of flowers and fruits); (vi) calculation of wood biomass for both forestry and habitat conservation purposes; (vii) coupling of structural and vegetation data to explore the patterns of plant diversity in relation to forest structure; (viii) providing, through the structural data, a sound basis for orienting forest management strategies, such as identifying suitable stands to be promoted to natural evolution, for assessing forest conservation status or maximizing the productivity of different ecosystem services^{6,39}.

Some more details about these example applications of the presented dataset might be of interest for the readers. For instance, measurements of plant abundance in an area can be carried out employing the photos collected by the robot in the same area. These can be duly labelled by expert botanists and used to train neural networks to identify plant species from photos, e.g.⁴⁰. Such a network can be used to infer the percentage of presence of a given species in an area.

Another example is the automated measurement of forest structural parameters from three-dimensional forest point cloud data^{41–43}; the mapping data provided by this paper comprises point clouds from which forest structural parameters such as tree number per stand and their diameter at breast height can be automatically extracted. The extraction of structural data may be of use in comparing forest communities in terms of diameter distribution and tree species composition^{44–46}; its potential for classifying and monitoring European Union forest habitats and evaluating their conservation status was partially explored by³⁹.

The interested reader can find more details about the examples of potential uses in the literature³⁸.

Template code for data extraction. We provide a template example of MATLAB script for ROS bag analysis in Code 1. This contains the basic lines of code to open a bag file and read its content within a specified topic. This example can be run in MATLAB 2022a (<https://www.mathworks.com/products/matlab.html>) or later together with ROS toolbox (<https://www.mathworks.com/products/ros.html>). The topics that can be set to extract

data from the bags are reported in Table 2. These topics and the details about the sensors employed on ANYmal C to record data are described in detail on the ANYmal Research Website (<https://www.anymal-research.org/>). However, a research partnership with ANYbotics is needed to access this.

Code 1 Template MATLAB code for extracting data from ROS bag files.

```
function msgStructs = extract_topic_from_bag(rosbag_file,topic_name)
% EXTRACT TOPICS FROM BAGS
% Extracts the message structure from bag file
% Inputs:
% - rosbag_file: string containing path to the ROS bag file.
% - topic_name: string containing the name of the rostopic.
% Outputs:
% - msgStructs: structure with the extracted messages.

bag = rosbag(rosbag_file); % Get ROS bag from path.
bSel = select(bag,'Topic',topic_name); % Select specified topic in bag.
msgStructs = readMessages(bSel,'DataFormat','struct'); % Read from topic into a struct.

end
```

It behooves us to highlight that the data presented in this paper is free to access independently by accessing ANYmal Research. Moreover, the template code shown in Code 1 and the code attached to this submission are enough to extract, visualize, and analyze the provided data.

Code availability

The GitHub page of the Research Center E. Piaggio³⁷ and Zenodo³⁶ host the MATLAB code attached to the data presented in this paper. This can be used to extract and visualize data from ROS bag files. In particular, the GitHub repository contains a README file describing each of the scripts individually.

Received: 8 March 2023; Accepted: 17 November 2023;

Published online: 01 December 2023

References

1. European Commission. Council Directive 92/43/EEC of 21 May 1992 on the conservation of natural habitats and of wild fauna and flora. Official Journal L 206, 22/07/1992. P. 0007–0050. *Official Journal of the European Union* **206**, 7–50 (1992).
2. Campagnaro, T., Sitzia, T., Bridgewater, P., Evans, D. & Ellis, E. C. Half Earth or whole Earth: what can Natura 2000 teach us? *BioScience* **69**, 117–124 (2019).
3. Evans, D. Building the European union's Natura 2000 network. *Nature Conservation* **1**, 11–26 (2012).
4. Langhout, W. & Brunner, A. L. The best idea Europe has ever had? Natura 2000—the largest network of protected areas in the World. *The George Wright Forum* **34**, 86–95 (2017).
5. European Commission and Directorate-General for Environment. *Natura 2000 and Forests. Part I-II* (Publications Office, 2019).
6. Carranza, M. L., Frate, L. & Paura, B. Structure, ecology and plant richness patterns in fragmented beech forests. *Plant Ecology & Diversity* **5**, 541–551 (2012).
7. de Koning, J. *et al.* Managing climate change in conservation practice: an exploration of the science–management interface in beech forest management. *Biodiversity and conservation* **23**, 3657–3671 (2014).
8. Scolastri, A., Cancellieri, L., Iocchi, M. & Cutini, M. Old coppice versus high forest: the impact of beech forest management on plant species diversity in central Apennines (Italy). *Journal of Plant Ecology* **10**, 271–280 (2017).
9. Piovesan, G., Biondi, F., Filippo, A. D., Alessandrini, A. & Maugeri, M. Drought-driven growth reduction in old beech (*Fagus sylvatica* L.) forests of the central Apennines, Italy. *Global Change Biology* **14**, 1265–1281 (2008).
10. D'Aprile, F. *et al.* Forestry under climate change. is time a tool for sustainable forest management? *Open Journal of Forestry* **5**, 329 (2015).
11. Angelini, P., Casella, L., Grignetti, A. & Genovesi, P. Manuali per il monitoraggio di specie e habitat di interesse comunitario (Direttiva 92/43/CEE) in Italia: habitat. *ISPRA. Serie Manuali e linee guida* **142**, 280 (2016).
12. Evans, D. & Arvela, M. Assessment and reporting under article 17 of the habitats directive. explanatory notes & guidelines for the period 2007–2012. *European Commission, Brussels* (European Topic Centre on Biological Diversity, 2011).
13. Gigante, D., Foggi, B., Venanzoni, R., Viciani, D. & Buffa, G. Habitats on the grid: The spatial dimension does matter for red-listing. *Journal for Nature Conservation* **32**, 1–9 (2016).
14. Bonari, G. *et al.* Shedding light on typical species: implications for habitat monitoring. *Plant Sociology* **58**, 157–166 (2021).
15. Brunet, J., Fritz, Ö. & Richnau, G. Biodiversity in European beech forests—a review with recommendations for sustainable forest management. *Ecological Bulletins* 77–94 (2010).
16. Scolastri, A., Bricca, A., Cancellieri, L. & Cutini, M. Understorey functional response to different management strategies in Mediterranean beech forests (central Apennines, Italy). *Forest Ecology and Management* **400**, 665–676 (2017).
17. Aubin, I., Ouellette, M.-H., Legendre, P., Messier, C. & Bouchard, A. Comparison of two plant functional approaches to evaluate natural restoration along an old-field–deciduous forest chronosequence. *Journal of Vegetation Science* **20**, 185–198 (2009).
18. Competella, G. *et al.* Patterns of plant trait–environment relationships along a forest succession chronosequence. *Agriculture, ecosystems & environment* **145**, 38–48 (2011).
19. Scolastri, A., Cancellieri, L., Iocchi, M. & Cutini, M. Patterns of floristic variation on a montane beech forest in the central Apennines (central Italy). *Plant Sociol* **51**, 69–82 (2014).
20. Hutter, M. *et al.* Anymal-toward legged robots for harsh environments. *Advanced Robotics* **31**, 918–931 (2017).
21. Angelini, F., Pollayil, M. J., Bonini, F., Gigante, D. & Garabini, M. Robotic monitoring of grasslands: a dataset from the EU Natura2000 habitat 6210* in the central Apennines (Italy). *Scientific Data* **10**, 418 (2023).
22. Bunce, R. G. H. *et al.* Manual for habitat and vegetation surveillance and monitoring: temperate, mediterranean and desert biomes. Tech. Rep., Alterra (2011).
23. Piedallu, C. & Gégout, J.-C. Effects of forest environment and survey protocol on GPS accuracy. *Photogrammetric Engineering & Remote Sensing* **71**, 1071–1078 (2005).

24. Sigrist, P., Coppin, P. & Hermy, M. Impact of forest canopy on quality and accuracy of GPS measurements. *International journal of remote sensing* **20**, 3595–3610 (1999).
25. Lee, T., Bettinger, P., Merry, K. & Cieszewski, C. The effects of nearby trees on the positional accuracy of GNSS receivers in a forest environment. *Plos one* **18**, e0283090 (2023).
26. Fanfarillo, E. *et al.* Chronicle of a death foretold: The vanishing of an emblematic cultural landscape results in the loss of its unique plant communities. *Global Ecology and Conservation* **47**, e02655 (2023).
27. Kapfer, J. *et al.* Resurveying historical vegetation data—opportunities and challenges. *Applied Vegetation Science* **20**, 164–171 (2017).
28. Regione Toscana. La carta degli habitat nei siti Natura 2000 toscani. <https://www.regione.toscana.it/-/la-carta-degli-habitat-nei-siti-natura-2000-toscani>. [Online; accessed 02-April-2022] (2022).
29. Biondi, E. *et al.* Manuale Italiano di interpretazione degli habitat della Direttiva 92/43/CEE. *Società Botanica Italiana. Ministero dell'Ambiente e della tutela del territorio e del mare, DPN* (2009).
30. WFO (2022). World flora online. <http://www.worldfloraonline.org>. [Online; accessed 16-November-2022] (2022).
31. Pignatti, S., Guarino, R. & La Rosa, M. Flora d'Italia, 2 Edizione. *Edagricole di New Business Media, Bologna* (2017).
32. Mucina, L., Grabherr, G. & Wallnöfer, S. Die pflanzengesellschaften österreichs. teil iii (1993).
33. Kangas, A. & Maltamo, M. *Forest inventory: methodology and applications*, vol. 10 (Springer Science & Business Media, 2006).
34. Schreuder, H. T., Gregoire, T. G. & Wood, G. B. *Sampling methods for multiresource forest inventory* (John Wiley & Sons, 1993).
35. Pollayil, M. J. *et al.* Robotic Monitoring of Forests: a Dataset from the EU habitat 9210* in the Tuscan Apennines (Central Italy). *Zenodo* <https://doi.org/10.5281/zenodo.10013693> (2023).
36. Pollayil, M. J., Angelini, F. & Garabini, M. Habitat9210 MATLAB Code for Data Analysis. *Zenodo* <https://doi.org/10.5281/zenodo.7701733> (2023).
37. Pollayil, M. J. CentroEPIaggio/Code-for-Habitat-Data-Analysis. *GitHub* <https://github.com/mpollayil/Code-for-Habitat-Data-Analysis>. [Online; accessed 06-March-2023] (2023).
38. Angelini, F. *et al.* Robotic monitoring of habitats: The natural intelligence approach. *IEEE Access* **11**, 72575–72591 (2023).
39. Angiolini, C. *et al.* Assessing the conservation status of EU forest habitats: The case of Quercus suber woodlands. *Forest Ecology and Management* **496**, 119432 (2021).
40. Manh, X. H. *et al.* Towards the computational assessment of the conservation status of a habitat. In *European Conference on Computer Vision*, 751–764 (Springer, 2022).
41. Bienert, A., Georgi, L., Kunz, M., Maas, H.-G. & Von Oheimb, G. Comparison and combination of mobile and terrestrial laser scanning for natural forest inventories. *Forests* **9**, 395 (2018).
42. Gollob, C., Ritter, T. & Nothdurft, A. Forest inventory with long range and high-speed personal laser scanning (PLS) and simultaneous localization and mapping (SLAM) technology. *Remote Sensing* **12**, 1509 (2020).
43. Liang, X. *et al.* Terrestrial laser scanning in forest inventories. *ISPRS Journal of Photogrammetry and Remote Sensing* **115**, 63–77 (2016).
44. De Cáceres, M., Legendre, P. & He, F. Dissimilarity measurements and the size structure of ecological communities. *Methods in Ecology and Evolution* **4**, 1167–1177 (2013).
45. De Cáceres, M., Martn-Alcón, S., González-Olabarria, J. R. & Coll, L. A general method for the classification of forest stands using species composition and vertical and horizontal structure. *Annals of Forest Science* **76**, 1–19 (2019).
46. Yao, J., Zhang, C., De Cáceres, M., Legendre, P. & Zhao, X. Variation in compositional and structural components of community assemblage and its determinants. *Journal of Vegetation Science* **30**, 257–268 (2019).

Acknowledgements

The Authors would like to thank Giuseppe Alfonso from University of Pisa for his valuable suggestions. This research is partially supported by the European Union's Horizon 2020 Research and Innovation Programme under Grant Agreement No. 101016970 (Natural Intelligence), in part by the Ministry of University and Research (MUR) as part of the PON 2014–2021 “Research and Innovation” resources – Green/Innovation Action - DM MUR 1062/2021, and in part by the Italian Ministry of Education and Research (MIUR) in the framework of the FoReLab project (Departments of Excellence). The authors acknowledge the support of NBFC to the University of Siena, funded by the Italian Ministry of University and Research, PNRR, Missione 4 Componente 2, “Dalla ricerca all'impresa”, Investimento 1.4, Project CN00000033.

Author contributions

All authors conceived the experiments and built the dataset. M.J.P., F.A., E.F. and C.A. wrote the manuscript. F.A., M.J.P. and M.G. conducted the experiments. M.J.P. wrote the code for data extraction and analysis. L.D.S., E.F., T.F., S.M. and C.A. provided the methodological framework for the monitoring of habitat 9210* and identified the plant species. All authors reviewed and approved the dataset and the manuscript.

Competing interests

The authors declare no competing interests.

Additional information

Correspondence and requests for materials should be addressed to F.A.

Reprints and permissions information is available at www.nature.com/reprints.

Publisher's note Springer Nature remains neutral with regard to jurisdictional claims in published maps and institutional affiliations.



Open Access This article is licensed under a Creative Commons Attribution 4.0 International License, which permits use, sharing, adaptation, distribution and reproduction in any medium or format, as long as you give appropriate credit to the original author(s) and the source, provide a link to the Creative Commons licence, and indicate if changes were made. The images or other third party material in this article are included in the article's Creative Commons licence, unless indicated otherwise in a credit line to the material. If material is not included in the article's Creative Commons licence and your intended use is not permitted by statutory regulation or exceeds the permitted use, you will need to obtain permission directly from the copyright holder. To view a copy of this licence, visit <http://creativecommons.org/licenses/by/4.0/>.

© The Author(s) 2023