



Aug 9th, 10:15 AM - 11:15 AM

Getting Started with Data Management Planning Services

Sarah Shreeves

University of Illinois at Urbana-Champaign, sshreeves@gmail.com

Follow this and additional works at: <http://digitalcommons.iwu.edu/dcglug>

 Part of the [Library and Information Science Commons](#)

Sarah Shreeves, "Getting Started with Data Management Planning Services" (August 9, 2013). *Digital Commons Great Lakes User Group Annual Meeting*. Paper 1.

<http://digitalcommons.iwu.edu/dcglug/2013/breakout4/1>

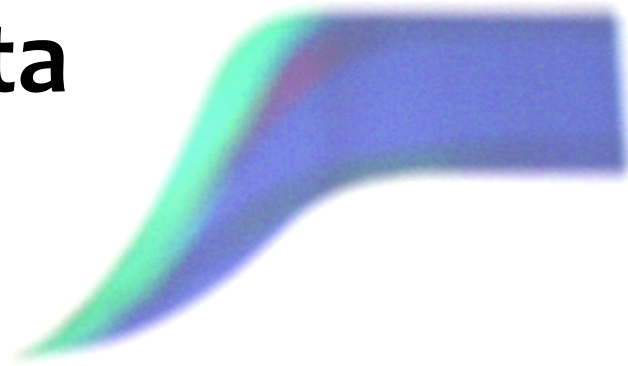
This Event is brought to you for free and open access by The Ames Library, the Andrew W. Mellon Center for Curricular and Faculty Development, the Office of the Provost and the Office of the President. It has been accepted for inclusion in Digital Commons @ IWU by the faculty at Illinois Wesleyan University. For more information, please contact digitalcommons@iwu.edu.

©Copyright is owned by the author of this document.

Getting Started with Data Management Planning Services

Sarah L. Shreeves
University of Illinois at Urbana-Champaign
DC+GLUG
August 9, 2013

Data



What's the fuss about data
management?



NATIONAL ENDOWMENT FOR THE
Humanities



National Science Foundation
WHERE DISCOVERIES BEGIN



National Institutes of Health
NIH...Turning Discovery Into Health®



NOAA NATIONAL OCEANIC AND
ATMOSPHERIC ADMINISTRATION
UNITED STATES DEPARTMENT OF COMMERCE

GORDON AND BETTY
MOORE
FOUNDATION

Creating positive outcomes for future generations

Verification /replication of research results

Reproducibility of research results

Reuse of data by other researchers

Return on investment



Diederik Stapel (Photo: Tilburg University)

Data archiving. As a condition for publication, *Evolution* requires that data used in the paper are archived. DNA sequence data must be submitted to GenBank and phylogenetic data to TreeBASE. Other types of data must be deposited in an appropriate public archive such as Dryad, the NCEAS Data Repository, or as supplementary online material associated with the paper published in *Evolution*. The data should be given with sufficient detail that, together with the contents of the paper, they allow each result in the published paper to be recreated. Authors may elect to have the data publicly available at time of publication, or, if the technology of the archive allows, may opt to embargo access to the data for a period up to a year after publication. Exceptions may be granted at the discretion of the Editor-in-Chief, especially for sensitive information such as the location of endangered species. Authors must state their intention to archive their data when they submit their manuscript and must confirm that this has been done before the manuscript is sent to press. If a repository is to be cited, the citation should include the sequence name and accession number, if available. The basic format for citing electronic resources is: Author's Last Name, First initial. Title of data package (e.g., Data from "Article name"). Data Repository Name, Data identifier (or DOI), address/URL. Please include on your title page the location of your data or where you intend to archive your data.

Identification of grass pollen through the quantitative analysis of surface ornamentation and texture

There are seven items in this repository that correspond to Datasets S1, S2 and S3 in the manuscript entitled "Identification of grass pollen through the quantitative analysis of surface ornamentation and texture" by Luke Mander, Mao Li, Washington Mio, Charless C. Fowlkes, and Surangi W. Punyasena. These items are images of the pollen of 12 species of grasses. These species are from three subfamilies within Poaceae, the Pooideae, the Chloridoideae and the Panicoideae. The images were acquired using scanning electron microscopy (SEM). Twenty pollen grains of each species were imaged. Each specimen was imaged once at x2,000 magnification, once at x6,000 magnification, and once at x12,000 magnification. Dataset S1 consists of raw SEM images and metadata from every specimen at x2,000, x6,000 and x12,000 magnification as provided by the instrument (a JEOL JSM-6060LV SEM running at 15kV). Dataset S1 has been split into three parts corresponding to: the Pooideae (Part 1), the Chloridoideae (Part 2), and the Panicoideae (Part 3). Dataset S2 consists of x6,000 x12,000 SEM images of each specimen of grass pollen cropped to 400x400 pixels. Dataset S2 has also been split into three parts: the Pooideae (Part 1), the Chloridoideae (Part 2), and the Panicoideae (Part 3). Dataset S3 consists of files used to test human ability to classify SEM images of grass pollen. These include a reference library, unclassified engraved images and master list of image classification.

Browse by

- [Titles](#)
- [Authors](#)
- [Subjects](#)
- [Date](#)

Recent Additions

[2013-04-05] [Dataset S3](#)

Mander, Luke; Li, Mao; Mio, Washington; Fowlkes, Charless C.; Punyasena, Surangi W. (2013)

 [ZIP \(49MB\)](#)

[2013-04-05] [Dataset S1 Part 3](#)

Mander, Luke; Li, Mao; Mio, Washington; Fowlkes, Charless C.; Punyasena, Surangi W. (2013)

 [ZIP \(136MB\)](#)



discoverable

- Secure and accessible
- Easy to manage your research data
 - 1GB private space
 - Unlimited public space



shareable

- Publish your negative data
- Quick and simple upload
- All formats of research accepted

[Find out more](#)



citable

- All published research is citable
- Cloud based service
- Always available

Sign up for free

what's this?"/>

[Sign up](#)

"Data which are determined to be a matter of public record and can therefore be made freely available, without restriction, are categorised as Public Access"



"Data must be properly curated throughout its life-cycle and released with the appropriate high-quality metadata."



"NERC is committed to supporting long-term environmental data management to enable continuing access to these data."



Wait, there's more!



OpenWetWare
Share your science.

navigation

- Home Main Page
- ! Recent changes
- ? Help
 - Contact OWW
 - Add a Lab Notebook

research

- Materials
- Protocols
- Resources

search

 ?

toolbox

- What links here
- Related changes
- Upload file
- Special pages
- Printable version
 - Permanent link
 - Cite this page
 - Subscribe to Categories



page talk view source history

OPEN WETWARE

OpenWetWare is an effort to promote the sharing of information, know-how, and wisdom among researchers and groups who are working in biology & biological engineering. **Learn more about us.**
If you would like edit access, would be interested in helping out, or want your lab website hosted on OpenWetWare, please join us. OpenWetWare is managed by the [BioBricks Foundation](#).



Labs & Groups

From around the world



Courses

Host & view classes



Protocols

Share techniques & more



Blogs

Read OWW blogs

Welcome

2012 iGEM

Teams



OpenWetWare Lab Notebooks

New features include:

- Dynamic calendars**
Create or view entries with a click
- Local search**
Search within your lab notebook
- Improved navigation**
Jump between entries with ease



Welcome new OWW users!

Jesse D. Kirkpatrick • Christopher W. Carr • Shiveta Sharma • Emmanuel Carrodeguas • Madeline O'Grady • Johnny Brown • Daphne Sun • Noa Ghersin • Denise Neibloom • Dominique Forestier • Stanislav Tsitkov • Marisol Montes Clemens • Helen Y. He • Catherine Gorick • Justin R. Zabilansky • Kelly M. Chambers • Matthew McNulty • Mitali Kini • See Young Lee • Emily Lydon

See all new users.

OWW Community Blog



Contribute for a strong synbio community

The BioBricks Foundation (BBF) is a public-benefit organization advancing synthetic biology to benefit all people and the planet.

[BioBricks Foundation Synthetic Biology 6.0 Conference announced: July 9-11, 2013](#)

Dear SynBio Community Members: The BioBricks Foundation is pleased to announce The BioBricks Foundation Synthetic Biology 6.

[Winners of BioBricks/OpenWetWare Improvement Survey](#)

Dear OpenWetWare Community, Thank you for your participation in the OWW improvement survey. We thank you for all your valuable input toward making OpenWetWare one of the most effective tools to facilitate your research.



Home
 First visit?
 Our offering
 Submit your code

Search by themes
 Advanced search

Help/FAQ
 Our partners
 The team
 Contact us

The concept

As simple as 1,2,3

1. A researcher has an **idea**.
2. The researcher writes a **paper** based on this idea.
3. Using RunMyCode, the researcher creates a **companion website** associated with this paper. The companion website allows people to implement the methodology presented in the paper.

[Learn more >>](#)



[About](#) [Concept](#) [Purpose](#)

[Create your own companion website >>](#)

RunMyCode goes global

The RunMyCode website now welcomes code and data from **any research area**:

[Statistics](#)
[Chemistry](#)
[Computer and Information Sciences](#)
[Engineering](#)
[Geosciences](#)
[Mathematics](#)
[Medical Research](#)
[Physics](#)
[Biological Sciences](#)
[Social Sciences](#)

If you would like to help us to promote RunMyCode, please contact us at vcs@stodden.net or nerinon@hec.fr

Companion websites

[Most Popular](#) [Latest](#)

Prices and Asymptotics for Discrete Variance Swaps [Discover](#)
 Bernard, C., and Z. Cui, *SSRN* (2012)
 last update 11-22-2012

Volatility Forecast Comparison Using Imperfect Volatility Proxies [Discover](#)
 Patton, J. A., *Journal of Econometrics* (2011)
 last update 11-17-2012

Maximum Likelihood Estimation of Discretely Sampled Diffusions: A Closed-Form Approximation Approach [Discover](#)
 Ait-Sahalia, Y., *Econometrica* (2002)
 last update 07-23-2012

Copula-Based Models for Financial Time Series [Discover](#)

Generally, data and code not made available at the time of publication, insufficient information in the publication for verification, replication of results. A Credibility Crisis.

- Victoria Stodden

NSF DMPs do **not** require the long term preservation and retention of data sets.

The recent directive from the White House will change that but we don't know how yet.

http://www.whitehouse.gov/sites/default/files/microsites/ostp/ostp_public_access_memo_2013.pdf

Ensure that **all...researchers receiving Federal grants and contracts for scientific research** ...develop data management plans, as appropriate, describing how they will provide for **long-term preservation of, and access to**, scientific data in digital formats resulting from federally funded research, or explaining why long term preservation and access cannot be justified

What is our
responsibility?

What type of support can
we provide?

Data management planning service
provides a foundation for:

- meeting funder requirements
 - data publication
- long term preservation and access
 - reuse of data

What are the elements of data management planning services?

Help with DMP requirements

DMPTool

Guidance and Resources for your Data Management Plan

[Home](#) [About DMP Tool](#) [DMP News](#) [My Plans](#) [Funder Requirements](#) [Help](#) ▼



Meet funder requirements for data management plans.

Photo courtesy of Glacier National Park

The DMP Tool allows you to: [1](#) [2](#) [3](#) [4](#)

[Get Started!](#)

Data Management Plan: Sample Plan Created at the DataONE Best Practices Workshop - Santa Fe NM 7/2011 Atmospheric CO₂ Concentrations, Mauna Loa Observatory, Hawaii, 2011-2013

1. Types of data produced

All samples at Mauna Loa Observatory will be collected continuously from air intakes located at five levels: a central tower and four towers located at compass quadrants. Raw data files will contain continuously measured CO₂ concentrations, calibration standards, reference standards, daily check standards, and blanks. The sample lines located at compass quadrants were used to examine the influence of source effects associated with wind directions. In addition to the CO₂ data, we will record weather data (wind speed and direction, temperature, humidity, precipitation, and cloud cover). Site conditions at Mauna Loa Observatory will also be noted and entered. The final data product will consist of 5-minute, 15-minute, hourly, daily, and monthly average atmospheric concentration of ...

[See a plan created with the DMP Tool](#)

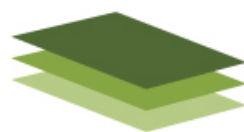
Recent DMP News

[DMPTool2 Project — July 2013 Report](#)

[Use Statistics Poll](#)

[DMPTool at the DataONE Users Group Meeting](#)

[More news >](#)



NSF-GEN: Generic: 1. Types of data produced

Types of data, samples, physical collections, software, curriculum materials, and other materials to be produced in the course of the project.

Progress

Click on a section below to edit it at any time.

✔ = complete

Plan description

- ✔ **1. Types of data produced**
- 2. [Data and metadata standards](#)
- 3. [Policies for access and sharing](#)
- 4. [Policies for re-use, redistribution](#)
- 5. [Plans for archiving & preservation](#)

Help

box size: [small](#) | [medium](#) | [full](#)

Give a short description of the data, including amount (if known) and content. If the project will be collecting data of a sensitive nature, note here and reflect upon it in subsequent sections. Data types could include text, spreadsheets, images, 3D models, software, audio files, video files, reports, surveys, patient records, etc. *Consider these questions:*

- What data will be generated in the research?
- What data types will you be creating or capturing?
- How will you capture or create the data?
- If you will be using existing data, state that fact and include where you got it.
- What is the relationship between the data you are collecting and the existing data?

B *I* U abc x_2 x^2

bed elevation needed to decide when the flow and the sediment transport reach conditions of mobile-bed equilibrium will be reported in an **Excel spreadsheet**. In the same Excel file, the relevant hydraulic parameters, e.g. Froude number, Shields number, will be computed for the conditions of mobile bed equilibrium. Finally, the grain size distributions of the samples of the bedload / sheet flow layer and of the bed surface collected with the siphons at mobile bed equilibrium will be reported in a separate worksheet. Bed elevation fluctuations measured with the ultrasonic transducers will be saved in separate Excel files. The relevant statistics of the bed elevation fluctuations will be reported in a separate file. Fluctuations recorded with the ultrasonic probes will be reported in an Excel spreadsheet. The relevant statistics of the bed elevation fluctuations will be reported in a summary file. Readings of the water surface elevation and estimates of the thickness of the sheet flow layer from the high definition videos will be recorded in separate files.

body p strong

Resources

General

[NSF Data Sharing Policy](#)

[NSF Data Management Plan Requirements](#)

Preview

Save

Save and next

Click on a section below to edit it at any time.

✔ = complete

Plan description

- ✔ 1. [Types of data produced](#)
- ✔ 2. [Data and metadata standards](#)
- ✔ 3. [Policies for access and sharing](#)
- 4. [Policies for re-use, redistribution](#)
- 5. **Plans for archiving & preservation**

Suggested answer text

(copy and paste as needed)

box size: [small](#) | [medium](#) | [full](#)

The data generated under this project and information supporting preservation and reuse will be deposited in IDEALS (Illinois Digital Environment for Access to Learning and Scholarship), the campus digital repository at <http://www.ideals.illinois.edu/>.

IDEALS is designed to collect, disseminate, and provide persistent and reliable, long term open access to the research and scholarship of faculty, staff, and students at the University of Illinois. IDEALS is managed by the University Library in partnership with the Office of the CIO at UIUC.

Help

box size: [small](#) | [medium](#) | [full](#)

This portion of the Data Management Plan asks the researcher to provide a long-term strategy for archiving and preserving the data from the research described in the proposal.

Consider these questions:

- What is the long-term strategy for maintaining, curating and archiving the data?
- Which archive/repository/database have you identified as a place to deposit data?
- What procedures does your intended long-term data storage facility have in place for preservation and backup?
- How long will/should data be kept beyond the life of the project?

Also consider these questions about the data and associated information that will be deposited:

- What data will be preserved for the long-term?
- What transformations will be necessary to prepare data for preservation / data sharing?
- What metadata/ documentation will be submitted alongside the data or created on deposit/ transformation in order to make the data reusable?
- What related information will be deposited?

Additional help for: [University of Illinois at Urbana-Champaign](#)

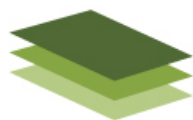
The UIUC Library in partnership with the Office of the CIO maintains IDEALS, a digital repository for access and long term preservation of research and scholarship on campus. Data and supporting material will be retained and managed indefinitely. In consultation with the IDEALS Coordinator, you may elect to have your research data retained and managed for a specified period of time.

Unless you have decided to submit your research data to a discipline-specific repository that provides preservation and discipline-specific access, then you should consider adapting and extending the suggested answer to complete this section of your data management plan.

General

[NSF Data Sharing Policy](#)

[NSF Data Management Plan Requirements](#)



Progress

Click on a section below to edit it at any time.

✔ = complete

[Plan description](#)

- ✔ 1. [Types of data produced](#)
- ✔ 2. [Data and metadata standards](#)
- ✔ 3. [Policies for access and sharing](#)
- 4. [Policies for re-use, redistribution](#)
- ✔ 5. [Plans for archiving & preservation](#)

Finish NSF-GEN: Generic: The internal structure of turbidite deposits

Your data management plan is displayed below. You can still use the side navigation to edit any section of the plan.

Export to: Plain Text Rich Text

Data Management Plan

The internal structure of turbidite deposits

1. Types of data produced

The laboratory data recorded in each experimental run will be divided in three groups: equilibrium measurements, non-equilibrium measurements, and characteristics of the bed deposit. Each experiment will be characterized in terms of water discharge, sediment feed rate, grain size distribution of the sediment feed, and rate of rise of the tailgate. These parameters will be reported in all the data files for that experimental run. Successive readings of water surface elevation and bed elevation needed to decide when the flow and the sediment transport reach conditions of mobile-bed equilibrium will be reported in an **Excel spreadsheet**. In the same Excel file, the relevant hydraulic parameters, e.g. Froude number, Shields number, will be computed for the conditions of mobile bed equilibrium. Finally, the grain size distributions of the samples of the bedload / sheet flow layer and of the bed surface collected with the siphons at mobile bed equilibrium will be reported in a separate worksheet. Bed elevation fluctuations measured with the ultrasonic transducers will be saved in separate Excel files. The relevant statistics of the bed elevation fluctuations will be reported in a separate file. Fluctuations recorded with the ultrasonic probes will be reported in an **Excel spreadsheet**. The relevant statistics of the bed elevation fluctuations will be reported in a summary file. Readings of the water surface elevation and estimates of the thickness of the sheet flow layer from the high definition videos will be recorded in separate files.

2. Data and metadata standards

We will use the standard metadata formats required by the National Centre for Earth-surface Dynamics (NCED).

3. Policies for access and sharing

Help with data repositories



Databib

[Find Repositories](#) | [Submit](#) | [Connect](#) | [About](#)

[Login/Register](#)

Featured Repository



595 data repositories
total in Databib.

Recently Added

- [NASA Earth Exchange \(NEX\)](#)
- [Metagenomics RAST \(MG-RAST\)](#)
- [Center for Operational Oceanographic Products and Services \(CO-OPS\)](#)
- [Barrow Area Information Database \(BAID\)](#)
- [ETH Travel Data Archive](#)

Databib is a searchable catalog / registry / directory / bibliography of **research data repositories**.

Search

[Find](#)

[Advanced Search](#)

Browse [[Subjects](#) | [A](#) [B](#) [C](#) [D](#) [E](#) [F](#) [G](#) [H](#) [I](#) [J](#) [K](#) [L](#) [M](#) [N](#) [O](#) [P](#) [Q](#) [R](#) [S](#) [T](#) [U](#) [V](#) [W](#) [X](#) [Y](#) [Z](#) | [All](#)]

3

[3TU.Datacentrum](#)

A multidisciplinary data repository for a consortium of universities in the Netherlands housing over...

A

[Access to Archival Databases \(AAD\)](#)

The AAD is a database through the U.S. National Archives and Records Administration that allows user...

[ACEpepDB: Peptide Database](#)

ACEpepDB is a database ran by the Central Food Technological Research Institute. It contains records...

[Addgene Plasmid Database](#)

Addgene is a non-profit organization dedicated to making it easier for scientists to share plasmids....

[Adult Blood Lead Epidemiology and Surveillance \(ABLES\) Interactive Database](#)

ABLES provides data on lead exposure of adults in the United States. The data comes from laboratory...

[Advanced Cooperative Arctic Data and Information Service \(ACADIS\)](#)

The Advanced Cooperative Arctic Data and Information Service (ACADIS) program includes data managem...

[Advanced Spaceborne Thermal Emission and Reflection Radiometer \[ASTFR\]](#)

[Go Back]

Title: VegBank

URL: <http://vegbank.org/vegbank/index.jsp>

Authority:

Ecological Society of America - Vegetation Panel

Subjects: Agriculture

Agriculture Botany Ecological assessment (Biology) Plant taxonomists

Vegetation boundaries Vegetation classification Vegetation management

Vegetation mapping Vegetation monitoring

Description:

VegBank is the vegetation plot provides data from three linked databases. VegBank databases provide plot records, vegetation types, and plant taxa. Vegetation records, community types and plant taxa may be submitted to VegBank for subsequent user-generated annotations, revisions, interpretations, downloads, and citations.

Access: Open; access for research and educational use

Start Date: 1999

Country: United States

Reuse: Open - <http://vegbank.org/vegbank/general/terms.html>

Deposit: Credentialed individuals in Ecology -
<http://vegbank.org/vegbank/DisplayLoadPlotAction.do>

Data in VegBank	
Plots	72,817
Classified Plots	66,212
As NVC	5,476
Communities	5,476
Plant Concepts	183,534
Accepted by USDA	48,435
General Concepts	7,860
Community Concepts	16,244
Use the NVC	8,796
Work in plots	303



Annotations

Publication and Citation Services

[Home](#)[Members](#)[FAQs](#)[Services](#)[Resources](#)[Events](#)[Contact us](#)

Helping you to find,
access, and reuse data

DataCite

DataCite Summer Meeting - 19-20 September 2013 - Washington DC

Published by Sergio Ruiz on 26 July 2013 - 11:04am

[Registrations and draft programme are available!](#)

Tags:

[datacite](#), [Summer Meeting](#), [Washington D.C.](#), [2013](#)

[Read more](#)

Announcing DataCite Metadata Version 3.0

Published by Sergio Ruiz on 25 July 2013 - 3:51pm

The DataCite Metadata Working Group is pleased to announce the release of Version 3.0 of the Metadata Schema. Documentation for the new schema is [available here](#). The DataCite Metadata Store (MDS) will accept Metadata Version 3.0 immediately. The MDS will continue to accept submissions using the prior versions of the Schema for the foreseeable future.

[A full list of the changes](#) can be found starting on page 4 of the

Why cite
data?

What is
DataCite?

What do
we do?



DOI resolver

Resolve a DOI string (e.g.

PRMT5 and the role of symmetric dimethylarginine in chromatoid bodies of planarian stem cells

Bookmark or cite this item: <http://hdl.handle.net/2142/28689>

Files in this item

File	Description	Format
 Supplementary File 1.txt (62MB)	Supplementary File 1. Reference Transcriptome for Rouhana et al., (2012), Development.	Text file
 Read Me_Supplementary File 1.doc (34KB)	Read Me	Microsoft Word

Title:	PRMT5 and the role of symmetric dimethylarginine in chromatoid bodies of planarian stem cells
Author(s):	Rouhana, Labib; Newmark, Phillip A.
Contributor(s):	Vieira, Ana P.; Roberts-Galbraith, Rachel H.
Subject(s):	planarian stem cells chromatoid bodies PIWI PRMT5
Abstract:	Reference transcriptome for Schmidtea mediterranea. File used and referred to by Rouhana et al., (2012), in work published in the journal Development.
Issue Date:	2012
Publisher:	Development
Citation Info:	Labib Rouhana, Ana P. Vieira, Rachel H. Roberts-Galbraith, and Phillip A. Newmark. (2012). PRMT5 and the role of symmetric dimethylarginine in chromatoid bodies of planarian stem cells. Development.
Genre:	Article
Type:	Text
URI:	http://hdl.handle.net/2142/28689
Publication Status:	published or submitted for publication
Peer Reviewed:	is peer reviewed

ACTGGCGTTACATCTTTAATAATAAAAGTTGAACCACTTTAAATCTCTTGAAGGCTTAACTTATTTCTACATTTTACAAAAATAAATGTATTTCTAATCATCACTT
ACGCTTGTTGTGACAAAAAGACAATTTATATAGGGGACAACTGTGAGTATACACAGCTTGATTTATTTATAAAACACACTTTTATTTCTATACAAAAATA
TTTTAGT2TAGAAGATAACAATGTCTTTTATAATAATAAAAGAAATACAGAGGTG-Cont1 i g28AACCAATTTAAATTTTTTATCACTCCACTTTATTCAGTA
TAGAGTCTTACCACTCTATTTTGAACAATCAAAAAGTTATTTACACAGGAGCATTTACCAGATAAAGTGAAGGTGTCTGTCATTTTATCCCGTCTCTCAGCAG
TTAATCCAGTAACTTCTCGGAACAATATCTGCAATTAATTTTCTGGTGAATCTTATTAATGAATATGATTTTCTGCAATGTGGACAACATCTCGGAGC
TGATCATCTGCTACGATGGCCCACTTTTCAGTTCTCAGTTAACTTATTTACGAAAATAAATTTCAACAAATAAATAAACAATTAATAAATAAATAAATCA
TAGATATAAATAAAGAAATTTATCTTTTAAATAGCTAACCAAAATTTATTTACAAAGTTTGTAACTTTTAAAGCAAAATTTGAAATGTTTGTGTTTATATAAT
CGATTAGAATAGGTAAGTCTGCTTACATCTTTAATAATAAAAGTTGAACCACTTTAAATCTCTTGAAGGCTTAACTTATTTTCATTTACAAAAATAAATAAATGTAT
ATTTATTTAAAAAATAACGGCTTGTGTGACAAAAAGACAATTTATTAATAGGCGACAATCTGTGAGTATCTACAGCTTTCGATTATTTATAAAACACATTTTA
GATTCATAGTCAAAATTTAGTTAGAAATACAATGTCTTTTATAATAAAGAAATCAGAGGTG-Cont1 i g29
ATAGAAGCAATTAAGATGTTAAGATAAATTTTGGATATCAGAGATATGAAGTCTTTGGCGATTTTAACTGCTACTGTTTTAAGTCAGATTTCCAGCTTTAT
ATCGAAAATATTTAACCGGATCTACGGTTGATGAATCTGGATTAGGAGTTGAGCAATATATCAATTTAAATTTAATTTAATTTAATTTAATTTAATTTAATTTA
GTTATAGAAGGATCTTCTAGTTGGCTACAGGACATATACCAGATAAAGTGAAGGTGTCTGTCATTTAATTTCCGCTCTCAGCAGCTTGCTACTGCCTA
CTTCTCGGAACAATATCTCGAATTAATTTTCTGGTGAATCTTATAAAGAAATGAATTTTCTGTCAAGTTGGACAACATCTGGAGCCTTTGTAATCAGTT
ATGACCCCACTTTCAGTTCTCAGTGGCCGAACCTTTTGC AAACATGTCCAAAGTCAATTTGGTGTCAAAATAGATAAAGCCCTCCGATCAGCATCACATTTG
CAAAAAGAGCACCTTTGGAACTTTGGTTTCTAGAAAGTGGTTGGTCAAGTTCACGTGGCGGGGAGACGTGATGCAAAATGAGCAATTTGGTATGGCTCATGTTA
CTTGTCCAGAAGTTAACGATCCAAGTAAACATTACTCAATTTGTGCTTCAAGATAACGGACACGAGCTTCTGAATGTAATCTACAAATTTCTTAAAGA
TTTCAACAGATCTGACACAATCTTCTCTGA-Cont1 i g30GGATTAGCAATATGGATAGAAAACAATAAAGATAAATTTTGGATATCAG
CGGATTTTACCGCTACTGTTTAAAGTCAGATTTTCAAGCTTTTATTAATCAATTAAGAAGCTTATCGAAAGATTTTAAACCGGATCTACGGTTGATGAATCTGGAT
TTATCTTAATTTATCTTATTGATAACTTATAATGTTGAAAATAAGGCCCTTAAATAAGTTATAGAGAACGAGTACTCTAGTTGGCTACAGGAGCATATTA
GTCGTCTTTTATCTGCTCTCAGCAGCTTTCCTACTGCTAGAAATTAATCCAGTAAATCTTCTCGGAAACAATCTGCTAATTTGTTTCTGGTGAATCT
TTTTCTGCCAATGTTGACAACTCGGAGCCCTTGTAACTCAGTTTAAATGATCATCTCGTACGATGACCCCTTTTCAGTTCTCAGGTAAACCTTATATTTACGAAA
ATAATAAACAAATTAATAAATAAATCAATTAATGAAATGAAATGACAATAGATAAATAAAGGATTTTATCTTTTAAATAGTCAACCAATATATATACAAAT
AATTGAAATGTTGTTTATAAATAAATAAATAAATAAATAAATTTATTCGATTAGAAATAGGTAATCTGATCTACACTTTTAAATAGTAAAGTTGAACCACTTTAAAT
TATTTCAATTTACAAAAATAAATGATTTCTTAACTCATCACTTGCATTTTAAAAAATAACCGCTTGTGTGACAAAAAGACAATTTATATAGGGGACAAT
TTGATTTATTTTATAAAACACATTTTATTTCTATACAAAATACCAGTCTATAGTCAAAATTTAGTTAGAAAGATACAATGCTTTTTATAATAATAAAGAAAT
TGATAATAATAAATAAATAAATAAATTTCCAAACAGTACGCAACAGTGAACAGAGTGTATCCAAACCAAAAACAACCAATGATCAGCAAAAAGAAATCCAAATA
AAAAATGGCTAAAAATGGAAAAGTGTACGAAAAATGTTCAATAATGCAGTCAAGAAAATAAGGATCTAATAAATAAATAAATAAATAAATAAATAAATAAATA
AAAAATAAATAAACAATATAA
ATTCATCAATATAAATCAATAATGGGGTGGTTCAGTGTGCTGGAAGTCAATCTAAGATGACAGGATTCAAAAGATAAAGGATGAGGAGGAGCCCTTT
CCTCTAGATAGACATTTGTTGATCAGAAAATCCAGTGAATGATGACAGCTTTTGAATAAATAAATAAATAAATAAATAAATAAATAAATAAATAAATAAATA
TAATA
TAGGCTTCCACTATAGTGTGACCAATATGCTGACATGTAAAAATAAATTTAAATTTAATGCACTT-Cont1 i g32
TGATAATAATAAATAAATAAATAAATTTCAAAAGTACGCAACAGTGAACAGAGTGTATCTCAACCAAAAACAACCAAAATGATCAGCAAAAAGAAATCCAAATA
AAAAATGGCTAAAAATGGAAAAGTGTACGAAAATGTTCAATATGCTAGTCAAGAAATAAGGATCTAATAAATCAATAAATAAATAAATAAATAAATAAATAA
AAAAATAAATAAACAATATAAATA
ATTCATCAATATAAATA
CTCTAGATAGACATTTGTTGATCAGAAAATCCAGTGAATGATGACAGCTTTTGAATAAATAAATAAATAAATAAATAAATAAATAAATAAATAAATAAATA

.zip file of .txt file used as reference transcriptome in:

[Labib Rouhana, Ana P. Vieira, Rachel H. Roberts-Galbraith, and Phillip A. Newmark. \(2012\). PRMT5 and the role of symmetric dimethylarginine in chromatoid bodies of planarian stem cells. Development.](#)

LEGEND:

Supplementary File 1. Reference pooled transcriptome for *S. mediterranea*. Reference transcriptome generated using default de novo assembly parameters in CLC Genomics Workbench (CLC Bio, Aarhus, Denmark) from the following databases: a *S. mediterranea* transcript discovery sequencing project (Blythe, et al 2010, PMID: 21179477), 454 sequencing reads from sexual *S. mediterranea* generated by our laboratory, maker and de novo gene predictions from the *S. mediterranea* genome (Robb, et al 2008, PMID: 17881371; Cantarel, et al 2008, PMID: 18025269), and neuropeptide sequences (Collins, et al 2010, PMID: 20967238). 156,959 reads were assembled into 22,120 contigs, with 33,829 sequences not matching. The contigs and nonmatching sequences were joined into one library and renamed numerically in Galaxy (Giardine, et al 2005, PMID: 16169926).

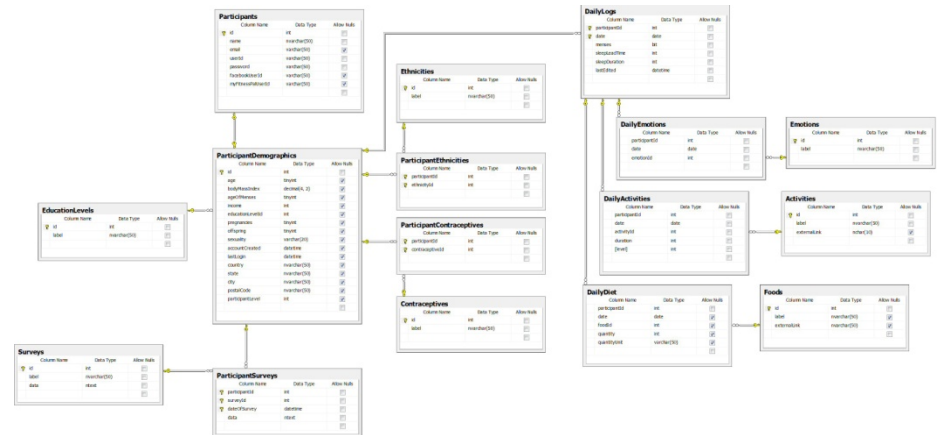
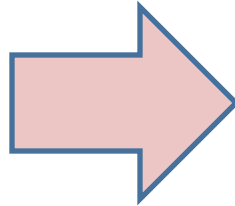
Irino, T; Tada, R (2009): Chemical and mineral compositions of sediments from ODP Site 127-797. <http://dx.doi.org/10.1594/PANGAEA.726855>,
Supplement to: Irino, Tomohisa; Tada, Ryuji (2000): Quantification of aeolian dust (Kosa) contribution to the Japan Sea sediments and its variation during the last 200 ky. *Geochemical Journal*, **34(1)**, 59-93,
<http://www.terrapub.co.jp/journals/GJ/pdf/3401/34010059.pdf>

Consultation Services

Getting in at the beginning



Getting in at the middle



Getting it 20 years after the fact

(In My Father's House Are Many Mansions: Family and Community - 1987)

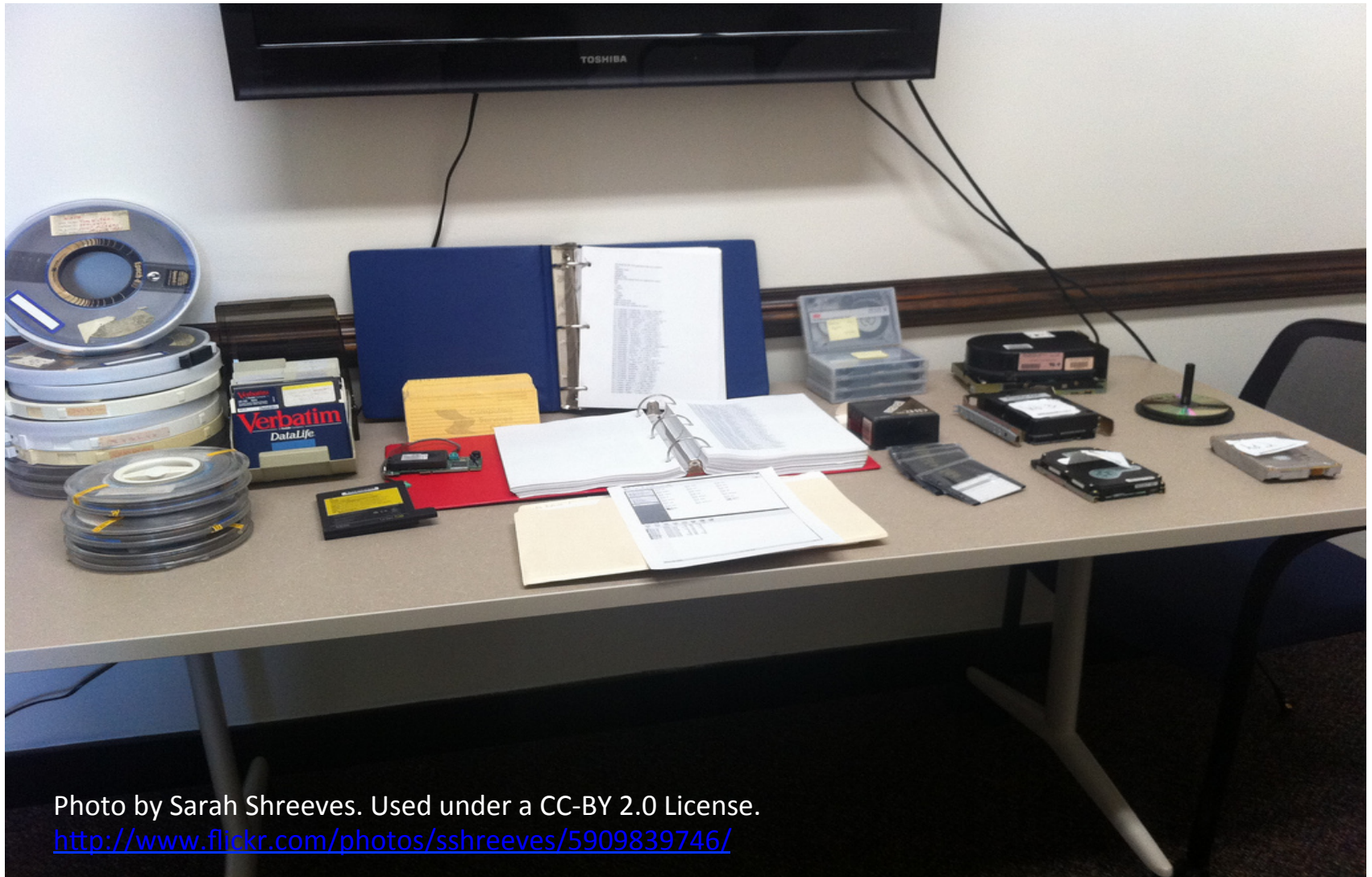


Photo by Sarah Shreeves. Used under a CC-BY 2.0 License.

<http://www.flickr.com/photos/sshreeves/5909839746/>

Working with Graduate and Undergraduate Students



Jars of Marbles by Alexkerhead. Used under a CC Attribution 2.0 license - <http://www.flickr.com/photos/alexkerhead/3123914969/>



"Playing for Keeps" Licensed from istockphoto. See <http://www.istockphoto.com/stock-photo-4724577-playing-for-keeps.php>

Attribution/legal stuff

Photos used under Creative Commons licenses referenced on the slide. The exception is the istockphotos which is used under the istockphoto license. If you reuse this presentation, please remove the istockphoto photographs or purchase your own.

This presentation is licensed under the Creative Commons Attribution 3.0 License. [Creative Commons Attribution- 3.0 License](#). Images used may have different terms; please consult with the terms associated with those images before reusing them.

Questions? Comments?

Thank you!

sshreeve@illinois.edu

@sshreeves on Twitter