



Intense PSMA expression of the uvula detected by [⁶⁸Ga] Ga-PSMA-PET/CT

Lisa Glantschnig¹ · Alexander Dierks¹ · Georgine Wienand¹ · Christian H. Pfob¹ · Ralph A. Bundschuh¹ · Constantin Lapa¹ · Malte Kircher¹

Received: 1 October 2023 / Accepted: 5 November 2023
© The Author(s) 2023

With the increasing use of prostate-specific membrane antigen (PSMA) targeting positron emission tomography (PET) imaging for prostate cancer staging, different radioligand uptake patterns of normal organs, e.g., the kidney, small intestine, or salivary glands, have been detected. In particular, the latter is of special interest due to the toxicity of radioligand therapy with [¹⁷⁷Lu] Lu-PSMA ligands potentially resulting in dose-limiting xerostomia [1].

Recently, the claimed discovery of an allegedly unknown pair of salivary glands aroused great public attention [2, 3]. By means of PSMA-PET/computed tomography (PET/CT), a group of Dutch researchers described a bilateral structure posterior in the nasopharynx, with ligand uptake similar to the known major salivary glands that they called “tubarial glands” [2]. In the aftermath, the novelty of the finding was severely questioned given the fact that glands in this region of the throat had already been described in the nineteenth century [4].

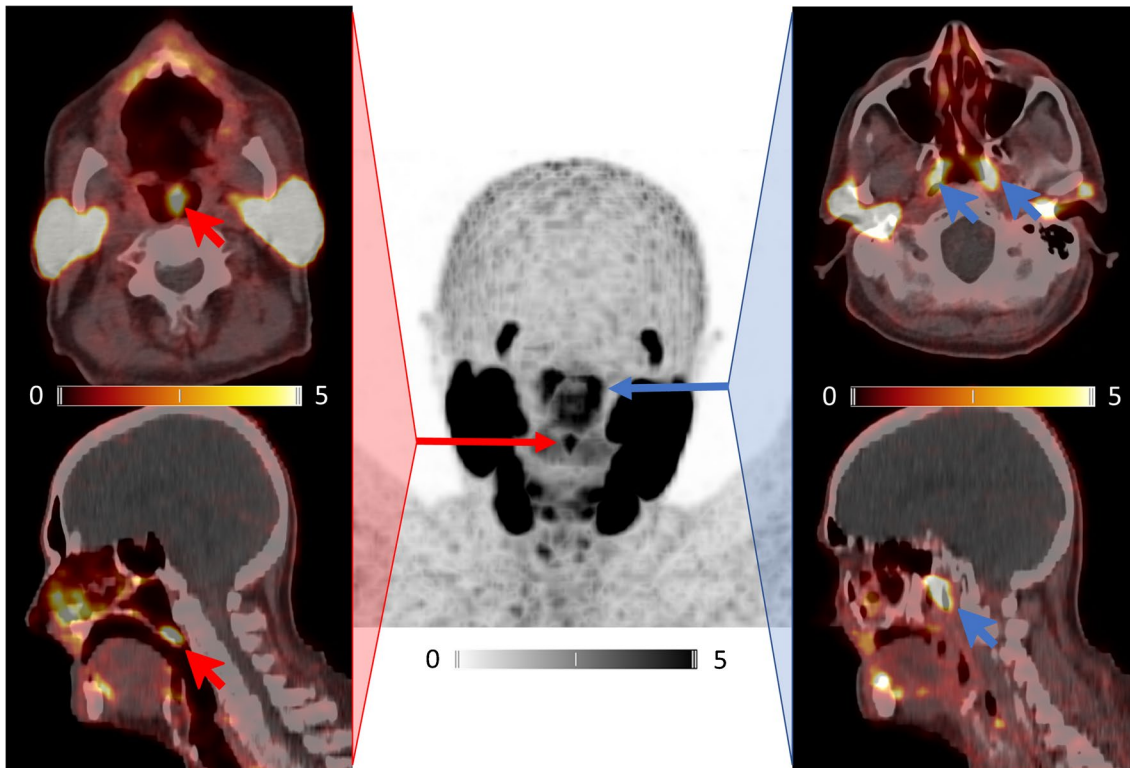
In our case, a 74-year-old man with newly diagnosed high-risk prostate cancer was referred for primary staging. Whole-body PSMA-PET/CT with [⁶⁸Ga]Ga-PSMA-I&T revealed the primary tumor but no extraprostatic focus. As an incidental finding, intense PSMA expression was detected in the uvula (SUV_{max} 6.71; red arrows). Anatomic studies have described the human uvula to consist of serous and seromucous glandular masses, muscular tissue, and large excretory canals. Thus, it is capable of producing large quantities of fluid saliva [5].

Noteworthy, the so-called “tubarial glands” could also be non-invasively visualized (SUV_{max} 7.44; blue arrows).

Although we cannot claim to have discovered a novel human organ, our case highlights the ability of PSMA-directed molecular imaging to detect salivary gland tissue within the human body. In addition—as demanded by Horace in his *Ars Poetica*—it could please and educate the reader and thus serve as an interesting piece of information.

✉ Constantin Lapa
Constantin.Lapa@uk-augsburg.de

¹ Nuclear Medicine, Faculty of Medicine, University of Augsburg, Augsburg, Germany



Funding Open Access funding enabled and organized by Projekt DEAL.

Data Availability The original dataset is available from the corresponding author upon reasonable request.

Declarations

Ethical approval All procedures performed in studies involving human participants were in accordance with the ethical standards of the institutional and/or national research committee and with the 1964 Helsinki Declaration and its later amendments or comparable ethical standards.

Informed consent Informed consent was obtained from the patient reported in this case report.

Conflict of interest CL reports prior consulting activities for Blue Earth Diagnostics Ltd. (Oxford, UK) and Novartis. RAB is Consultant for and has received speaker's honoraria from Bayer Healthcare (Leverkusen, Germany) and Eisai GmbH (Frankfurt, Germany). All other authors did not report relevant conflicts of interest regarding this article.

Open Access This article is licensed under a Creative Commons Attribution 4.0 International License, which permits use, sharing, adaptation, distribution and reproduction in any medium or format, as long as you give appropriate credit to the original author(s) and the source, provide a link to the Creative Commons licence, and indicate if changes were made. The images or other third party material in this article are included in the article's Creative Commons licence, unless indicated otherwise in a credit line to the material. If material is not included in

the article's Creative Commons licence and your intended use is not permitted by statutory regulation or exceeds the permitted use, you will need to obtain permission directly from the copyright holder. To view a copy of this licence, visit <http://creativecommons.org/licenses/by/4.0/>.

References

1. Heynickx N, Herrmann K, Vermeulen K, Baatout S, Aerts A. The salivary glands as a dose limiting organ of PSMA- targeted radionuclide therapy: a review of the lessons learnt so far. *Nucl Med Biol.* 2021;98–99:30–9. <https://doi.org/10.1016/j.nucmedbio.2021.04.003>.
2. Valstar MH, de Bakker BS, Steenbakkers R, de Jong KH, Smit LA, Klein Nulent TJW, et al. The tubarial salivary glands: a potential new organ at risk for radiotherapy. *Radiother Oncol.* 2021;154:292–8. <https://doi.org/10.1016/j.radonc.2020.09.034>.
3. Wu KJ. Doctors may have found secretive new organs in the center of your head. *New York: New York Times*; 2020.
4. Mudry A, Jackler RK. Are “tubarial salivary glands” a previously unknown structure? *Radiother Oncol.* 2021;154:314–5. <https://doi.org/10.1016/j.radonc.2020.12.003>.
5. Finkelstein Y, Meshorer A, Talmi YP, Zohar Y, Brenner J, Gal R. The riddle of the uvula. *Otolaryngol Head Neck Surg.* 1992;107:444–50. <https://doi.org/10.1177/019459989210700318>.

Publisher's note Springer Nature remains neutral with regard to jurisdictional claims in published maps and institutional affiliations.