



Aalborg Universitet

AALBORG UNIVERSITY
DENMARK

A novel serum calprotectin (MRP8/14) particle-enhanced immuno-turbidimetric assay (sCAL turbo) helps to differentiate systemic juvenile idiopathic arthritis from other diseases in routine clinical laboratory settings

Foell, Dirk; Saers, Melanie; Park, Carolin; Brix, Ninna; Glerup, Mia; Kessel, Christoph; Wittkowski, Helmut; Hinze, Claas; Berntson, Lillemor; Fasth, Anders; Myrup, Charlotte; Nordal, Ellen; Rygg, Marite; Hasle, Henrik; Albertsen, Birgitte Klug; Herlin, Troels; Holzinger, Dirk; Niederberger, Christian; Schlüter, Bernhard

Published in:
Molecular and cellular pediatrics

DOI (link to publication from Publisher):
[10.1186/s40348-023-00168-0](https://doi.org/10.1186/s40348-023-00168-0)

Creative Commons License
CC BY 4.0

Publication date:
2023

Document Version
Publisher's PDF, also known as Version of record

[Link to publication from Aalborg University](#)

Citation for published version (APA):
Foell, D., Saers, M., Park, C., Brix, N., Glerup, M., Kessel, C., Wittkowski, H., Hinze, C., Berntson, L., Fasth, A., Myrup, C., Nordal, E., Rygg, M., Hasle, H., Albertsen, B. K., Herlin, T., Holzinger, D., Niederberger, C., & Schlüter, B. (2023). A novel serum calprotectin (MRP8/14) particle-enhanced immuno-turbidimetric assay (sCAL turbo) helps to differentiate systemic juvenile idiopathic arthritis from other diseases in routine clinical laboratory settings. *Molecular and cellular pediatrics*, 10(1), Article 14. <https://doi.org/10.1186/s40348-023-00168-0>

General rights

Copyright and moral rights for the publications made accessible in the public portal are retained by the authors and/or other copyright owners and it is a condition of accessing publications that users recognise and abide by the legal requirements associated with these rights.

- Users may download and print one copy of any publication from the public portal for the purpose of private study or research.
- You may not further distribute the material or use it for any profit-making activity or commercial gain
- You may freely distribute the URL identifying the publication in the public portal -

RESEARCH

Open Access



A novel serum calprotectin (MRP8/14) particle-enhanced immuno-turbidimetric assay (sCAL turbo) helps to differentiate systemic juvenile idiopathic arthritis from other diseases in routine clinical laboratory settings

Dirk Foell^{1*}, Melanie Saers¹, Carolin Park¹, Ninna Brix², Mia Glerup³, Christoph Kessel¹, Helmut Wittkowski¹, Claas Hinze¹, Lillemor Berntson⁴, Anders Fasth⁵, Charlotte Myrup⁶, Ellen Nordal^{7,8}, Marite Rygg^{9,10}, Henrik Hasle³, Birgitte Klug Albertsen³, Troels Herlin³, Dirk Holzinger^{11,12}, Christian Niederberger¹³ and Bernhard Schlüter¹⁴

Abstract

Background Differential diagnosis in children with signs of unprovoked inflammation can be challenging. In particular, differentiating systemic juvenile idiopathic arthritis (SJIA) from other diagnoses is difficult. We have recently validated the complex of myeloid-related proteins 8/14 (MRP8/14, also known as S100A8/A9 complex or serum calprotectin) as a helpful biomarker supporting the diagnosis of SJIA. The results were subsequently confirmed with a commercial ELISA. However, further optimization of the analytical technology is important to ensure its feasibility for large-scale use in routine laboratory settings.

Methods To evaluate the accuracy in identifying children with SJIA, the performance of a particle-enhanced immuno-turbidimetric assay for serum calprotectin (sCAL turbo) on an automated laboratory instrument was analyzed. Samples from 615 children were available with the diagnoses SJIA ($n=99$), non-systemic JIA ($n=169$), infections ($n=51$), other inflammatory diseases ($n=126$), and acute lymphoblastic leukemia (ALL, $n=147$). In addition, samples from 23 healthy controls were included.

Results The sCAL turbo assay correlated well with the MRP8/14 ELISA used in previous validation studies ($r=0.99$, $p<0.001$). It could reliably differentiate SJIA from all other diagnoses with significant accuracy (cutoff at 10,500 ng/ml, sensitivity 84%, specificity 94%, ROC area under curve 0.960, $p<0.001$).

Conclusions Serum calprotectin analyses are a helpful tool supporting the diagnosis of SJIA in children with prolonged fever or inflammatory disease. Here, we show that an immuno-turbidimetric assay for detection of serum calprotectin on an automated laboratory instrument can be implemented in clinical laboratory settings to facilitate its use as a diagnostic routine test in clinical practice.

Keywords Biomarkers, Fever of unknown origin, Still's syndrome, Systemic inflammation

*Correspondence:

Dirk Foell

dfoell@uni-muenster.de

Full list of author information is available at the end of the article



© The Author(s) 2023. **Open Access** This article is licensed under a Creative Commons Attribution 4.0 International License, which permits use, sharing, adaptation, distribution and reproduction in any medium or format, as long as you give appropriate credit to the original author(s) and the source, provide a link to the Creative Commons licence, and indicate if changes were made. The images or other third party material in this article are included in the article's Creative Commons licence, unless indicated otherwise in a credit line to the material. If material is not included in the article's Creative Commons licence and your intended use is not permitted by statutory regulation or exceeds the permitted use, you will need to obtain permission directly from the copyright holder. To view a copy of this licence, visit <http://creativecommons.org/licenses/by/4.0/>.

Background

Systemic juvenile idiopathic arthritis (SJIA) is a serious disease in children with prominent systemic inflammatory features, which can be accompanied by arthritis. The International League of Associations for Rheumatology (ILAR) classification criteria still consider SJIA a category of juvenile idiopathic arthritis (JIA) [1]. Phenotypically, it is characterized by fever, an evanescent rash, serositis, reticuloendothelial involvement, and articular manifestations. Today, SJIA is seen as part of the autoinflammatory disease spectrum [2]. In the initial phase, sterile hyperinflammation is driven by innate immune processes with a prominent role of cytokines such as interleukin (IL)-1 and IL-6. If not stopped during this phase, the disease can progress into a later phase involving complex immune dysregulation also leading to a destructive chronic arthritis [3, 4]. In addition, patients with SJIA are prone to complications, including life-threatening hyperinflammation (macrophage activation syndrome, SJIA-MAS) and the more recently described SJIA-associated lung disease (SJIA-LD) [5]. Meanwhile, the treatment arsenal in SJIA has expanded markedly, and state-of-the-art therapeutic approaches include approved biologics targeting IL-1 and IL-6 pathways.

It has been well-documented that starting treatment as early as possible is favorable for the effectiveness of cytokine blockade. Early intervention could potentially prevent the biphasic course with the threatening development of chronic inflammatory processes [6–9]. Nevertheless, many patients are still treated too late or not successfully because the diagnosis is not made in the optimal time window (“window of opportunity”). At onset, patients frequently present with fever of unknown origin and/or with nonspecific signs and symptoms. In this initial phase, and particularly in the absence of arthritis, distinguishing SJIA from other diagnostic alternatives remains highly challenging. Therefore, SJIA is still seen as a diagnosis of exclusion, which can significantly delay final diagnosis and initiation of adequate treatment [10, 11]. To enable inclusion of patients without arthritis into clinical practice recommendations, treatment plans have been developed for “classic” (ILAR defined) SJIA and “probable” SJIA without arthritis [11]. Consensus treatment plans developed by the Childhood Arthritis and Rheumatology Research Alliance (CARRA) included a case definition that requires arthritis of any duration, rather than the 6 weeks required per the ILAR criteria [12]. New expert initiatives are currently working on revised classification criteria [2]. An ongoing European League of Associations for Rheumatology (EULAR)/Paediatric Rheumatology European Society (PREs) task force reached consensus for a novel concept of Still’s disease as one continuum, including both

SJIA and its counterpart with onset in adulthood termed adult-onset Still’s disease (AOSD).

Biomarkers differentiating SJIA in its initial inflammatory phase from the main differential diagnoses, i.e., infections or malignancies, may support early diagnosis and thus a timely start of therapy. Among published biomarkers differentiating SJIA from infections, the heterocomplex S100A8/A9 appears especially promising [13, 14]. This complex consists of two members of the S100 family of calcium-binding proteins, which are expressed and released by cells of myeloid origin. The proteins are also referred to as myeloid-related proteins 8 and 14, and the complex has been termed MRP8/14 or “serum calprotectin” [15]. As danger signals they are secreted by activated myeloid cells, phagocyte-specific S100 proteins amplify disease processes in SJIA by activating Toll-like receptor 4. Serum levels are extremely elevated in active SJIA, and the measurement of S100A8/A9 can be used for the diagnosis of SJIA [16–18]. These results were recently validated with a commercially available ELISA [19].

However, the analytical technique needs further optimization to ensure easy availability and enable large-scale use in routine laboratories. To achieve this objective, we collaborated with the central laboratory at our university hospital to establish an immuno-turbidimetric assay for the measurement of serum calprotectin in serum samples on an automated laboratory instrument. In addition, the inclusion of more patients with hematological malignancies was warranted, as especially leukemias can cause fever and joint pain at initial presentation in children [20].

Patients and methods

Patients

We included patients with fever of unknown origin, signs of unprovoked inflammation, or relevant differential diagnoses of Still’s disease, who were undergoing a diagnostic checkup for suspected inflammatory or malignant diseases. By definition, there was no definite SJIA diagnosis in any of these patients at the time of sampling. In these patients, the diagnosis used in the statistical analyses was confirmed post hoc by the referring physicians as previously reported [19]. The later confirmed diagnoses of the patients were SJIA ($n=99$), nonsystemic JIA (nsJIA, $n=169$), systemic febrile infections ($n=51$), other systemic inflammatory diseases (SIDs, $n=126$), and acute lymphoblastic leukemia (ALL, $n=147$). The patients with fever of unknown origin were collected at the University of Muenster as reported before [19]. The NOPHO Leukemia BioBank (NLBB) in Uppsala, Sweden, provided the serum samples of consecutive ALL patients from Aalborg and Aarhus University Hospitals, Denmark [21]. Patients with nsJIA were from the Nordic JIA cohort as previously

described in detail [22, 23]. In addition, samples from 23 healthy controls were included at the University of Muenster. They were from children who had presented to the pediatric endocrinology unit with concern for short or tall stature but for whom an inflammatory condition had been ruled out. Thus, in total, 615 samples were available for analysis.

Sample handling

Calprotectin is expressed and stored in huge amounts in leukocytes. To avoid unspecific release of the biomarker into collected samples, centrifugation and separation within 4 h after blood drawing were performed. Serum supernatants were stored at $-80\text{ }^{\circ}\text{C}$ until processing. Calprotectin complexes are stable for at least 3 days at room and for months below $-20\text{ }^{\circ}\text{C}$, even with freeze/thaw cycles 3 times or more [19].

Biomarker analyses

To evaluate the accuracy in identifying children with SJIA, the performance of an immuno-turbidimetric assay for measurements of serum calprotectin (BÜHLMANN sCAL[®] turbo) implemented into the automated laboratory instrument (Roche cobas[®] c502) at the central clinical laboratory of the University Hospital Muenster. The BÜHLMANN sCAL turbo test is a particle-enhanced immuno-turbidimetric assay (PETIA) with a detection range of 230–15,000 ng/ml (extended range up to 225,000 ng/ml by dilution of 1:15) in sample volumes of only 2–3 μl . The upper limit of serum levels in 160 healthy adults was 2740 ng/ml (90% confidence interval), according to the manufacturer's information. In addition, an established MRP8/14 ELISA from BÜHLMANN (EK-MRP8/14) was used according to the manufacturer's protocol to compare formerly reported values to the results obtained with the new immuno-turbidimetric assays. Samples were diluted 1:100 initially; for results below or above the assay range, a lower or higher dilution was applied.

Statistics

The statistical analysis of rank differences was performed using two-sided ANOVA and the Kruskal–Wallis test with Dunn's correction for multiple comparisons. Receiver operating characteristic (ROC) curves were plotted to determine the accuracy of inflammation marker measurements as a diagnostic test and for calculation of cut-off values. The performance of the models was evaluated using the area under the receiver operating characteristic curve (AUC), sensitivity, specificity, positive or negative likelihood ratio, and accuracy using a threshold of $p < 0.05$. Spearman's ρ correlations were calculated. SPSS 25.0 for Microsoft Windows (SPSS,

Chicago, IL, USA) and GraphPad Prism version 8.0 for Mac (GraphPad Software, La Jolla, CA, USA) were used for statistical analyses. Unless stated otherwise, data are expressed as mean with 95% CI.

Results

Comparison of patient characteristics

Healthy controls were significantly older than patients from all disease groups. SJIA patients were characterized by high WBC counts, ESR, and CRP, but notably, these parameters were not significantly elevated compared to infections as a major differential diagnosis. CRP was higher in SJIA than in ALL, which is another main differential diagnosis in patients with fever of unknown origin or signs of unprovoked inflammation. ALL patients also had abnormalities that would not be typically seen in SJIA, such as markedly elevated LDH or reduced platelet counts. Basic characteristics of the patients are summarized in Table 1. Further details are provided in Supplemental Table 1.

Correlation between sCAL turbo and MRP8/14 ELISA

We first analyzed how levels established with the new sCAL turbo assay would compare to levels determined by the MRP8/14 ELISA that was used in previous validation studies (Fig. 1). In total, 299 samples (from all disease groups except nsJIA and ALL) were run on both assays, and respective data were used for comparison and correlation analyses. We found an excellent correlation of sCAL turbo values to those produced by the ELISA ($r = 0.99$, $p < 0.001$). Values generated with the MRP8/14 ELISA were higher than those determined by the sCAL turbo assay (mean 2.5-fold difference).

Levels of serum calprotectin in different disease groups

Overall, the sCAL turbo assay revealed an excellent performance. In healthy children, all measured values remained below the upper limit of healthy controls as provided by the manufacturer, with the highest level measured at 2220 ng/ml. The concentrations in samples from all patient groups with diverse systemic inflammatory diseases were elevated above the maximal levels of healthy controls as quantified in this study (in the SJIA group 98% of measurements, in the infection group 84%, and in the SIDs group 62%). In contrast, only 34% of patients with nsJIA revealed values above the upper limit of normal, while only few patients with ALL (8%) presented with values of such level. There were markedly different sCAL levels between the patient groups, with those in SJIA being significantly higher compared to all others, thus including the major differential diagnoses

Table 1 Characteristics of the patients with available serum samples

	SJIA	Infections	SIDs	nsJIA	ALL	Controls
Samples, <i>n</i>	99	51	126	169	147	23
Age	6.8 (0.6–16.5)	4.5 (0.3–16.9)	5.5 (0.4–17.7)	6.4 (0.2–15.8)	4.4 (0.5–18.8)	13.2 (4.8–16.9)
Sex, f/m (% female)	45/49 (45)	31/20 (61)	60/66 (48)	114/55 (67)	67/75 (46)	11/12 (48)
WBC, cells/ μ l	14,700§ (3700–40,900)	11,375 (3400–38,000)	9520 (1100–25,000)	9560 (6700–22,100)	8700 (300–726,000)	n.d
ESR, mm/h	83 (4–170)	65 (5–109)	27# (1–140)	10## (1–104)	61 (9–160)	n.d
CRP, mg/dl	9.5* (1.2–41.2)	8.0** (1.2–44.1)	4.3 (1.0–32.8)	3.8 (0.1–8.9)	2.0 (0.8–18.5)	<0.5

All data expressed as median (range) except otherwise stated

WBC White blood cells, ESR Erythrocyte sedimentation rate, CRP C-reactive protein, n.d Not determined

§WBC count significantly higher in SJIA compared to SIDs ($p < 0.001$) and ALL ($p = 0.005$)

#ESR significantly lower in SIDs compared to SJIA ($p < 0.001$), infections ($p < 0.01$), and ALL ($p < 0.001$)

##ESR significantly lower in nsJIA compared all other disease groups ($p < 0.001$)

* CRP significantly higher in SJIA compared to SIDs, nsJIA, and ALL ($p < 0.001$ for all)

** CRP significantly higher in infections compared to ALL ($p < 0.001$)

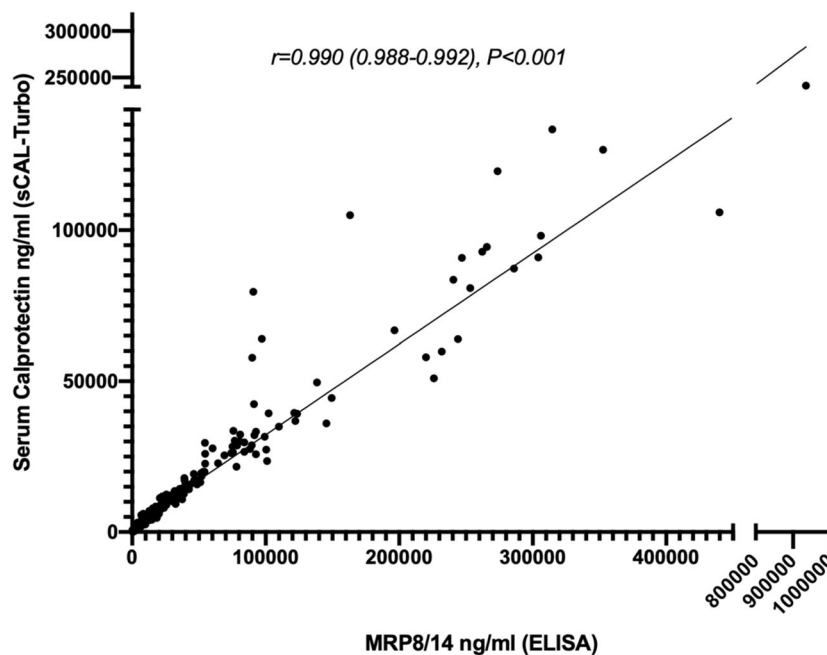


Fig. 1 Correlation between sCAL turbo and MRP8/14 ELISA. Spearman's ρ correlations were calculated in 299 samples with parallel analysis of the S100A8/A9 serum concentration by either the sCAL turbo or the MRP8/14 ELISA (both from BÜHLMANN)

in FUO (i.e., infections, SIDs, and leukemia) (Fig. 2 and Supplemental Table 2).

Assay performance in differentiating SJIA from other diagnoses

The sCAL turbo assay could reliably differentiate SJIA from all other diagnoses with significant accuracy (cut-off at 10,500 ng/ml, sensitivity 84%, specificity 94%, ROC AUC 0.960, $p < 0.001$) (Table 2). In the SJIA group, 84% of the determined values remained above this threshold,

which was the case for 18% of values in the infection, 8% in the SIDs, and 7% in the nsJIA group. The highest quantified sCAL concentration among ALL patients was 7210 ng/ml and thus remained clearly below the determined optimized cutoff for SJIA. Consequently, if sCAL measured in a patient is higher than 10,500 ng/ml, it is very likely that SJIA is the underlying cause of FUO (LR+, positive likelihood ratio 14.0 versus all other groups). Vice versa, it is unlikely to falsely diagnose SJIA in this scenario (LR-, negative likelihood ratio of 0.17

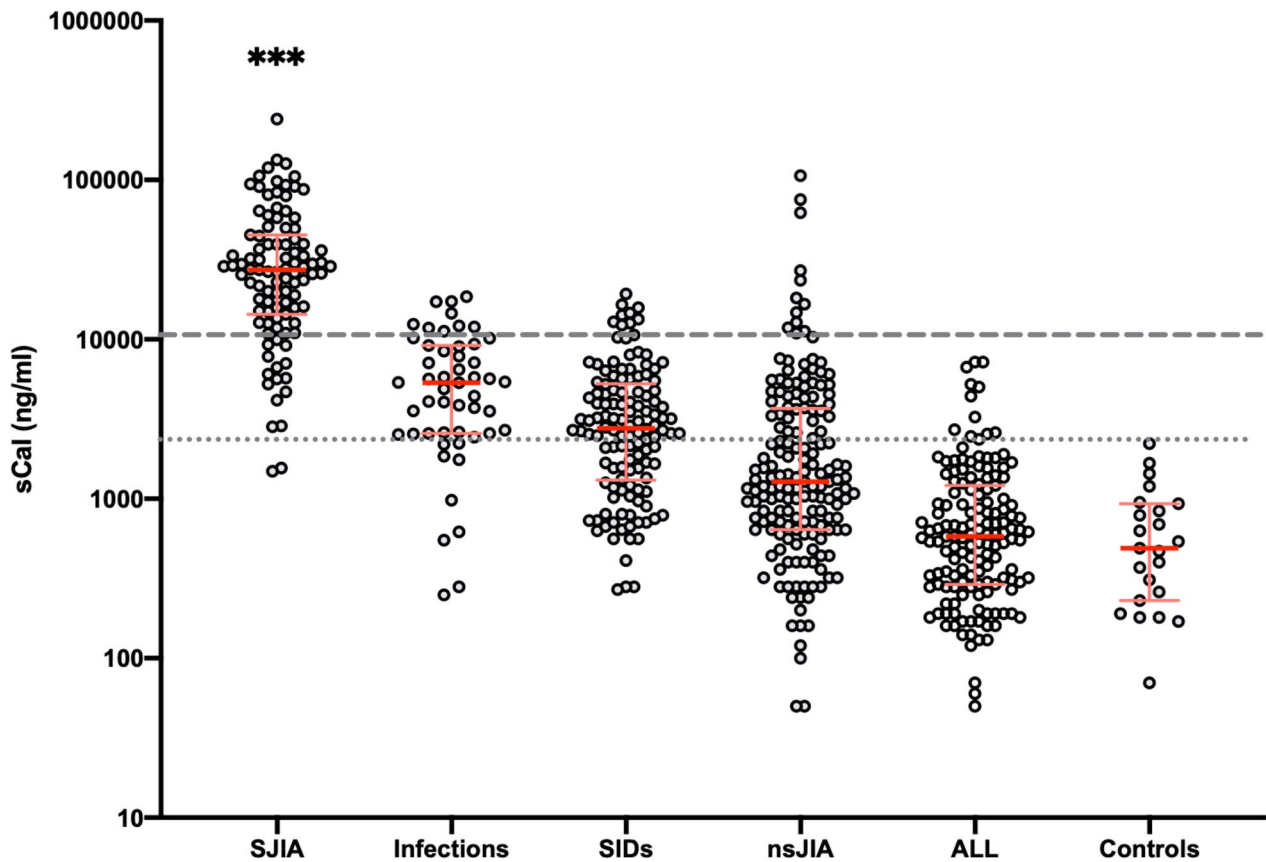


Fig. 2 Results of sCAL turbo measurements in different groups of patients. Results of sCAL measurements in patient groups are shown using individual scatter plots, with red line showing median, error bars showing interquartile range (logarithmic scale of y-axis). The dotted gray line shows the upper limit of healthy controls. The dashed gray line shows the cutoff at 10,500 ng/ml which revealed the best accuracy in differentiating SJIA from other differential diagnoses (as determined by ROC analyses, see below). *** $p < 0.001$ for SJIA vs. all other groups (Kruskal-Wallis test with Dunn’s correction for multiple comparison)

Table 2 Accuracy (ROC analyses) of sCAL turbo measurements in differentiating groups

	<i>SJIA vs all groups</i>	<i>SJIA vs infections</i>	<i>SJIA vs ALL</i>
<i>AUC (95%CI)</i>	0.960 (0.941–0.978)	0.908 (0.862–0.953)	0.992 (0.985–0.999)
<i>Cutoff (ng/ml)</i>	10,500	10,500	10,500
<i>Sensitivity (%)</i>	84	84	84
<i>Specificity (%)</i>	94	82	100
<i>Positive likelihood ratio (LR+)</i>	14.0	4.7	∞
<i>Negative likelihood ratio (LR–)</i>	0.17	0.20	0.16

and 0.20 versus all other groups and versus infection, respectively). In case of higher levels, it is even more likely that SJIA is the correct diagnosis. Using a stricter cutoff at 15,000 ng/ml, the LR+ increases to 37.5 (versus all groups) and to 12.5 versus infections (Supplemental Table 3). The ROC curves showing the accuracy in differentiating the individual patient groups are shown in Fig. 3. In contrast, CRP, ESR, or WBCs allowed no robust

differentiation of SJIA from neither of the three major differential diagnoses in suspected SJIA, i.e., infections, SIDs, and leukemia (Fig. 4).

Discussion

Here, we show that an immuno-turbidimetric assay for detection of serum calprotectin on an automated laboratory instrument can be implemented in clinical

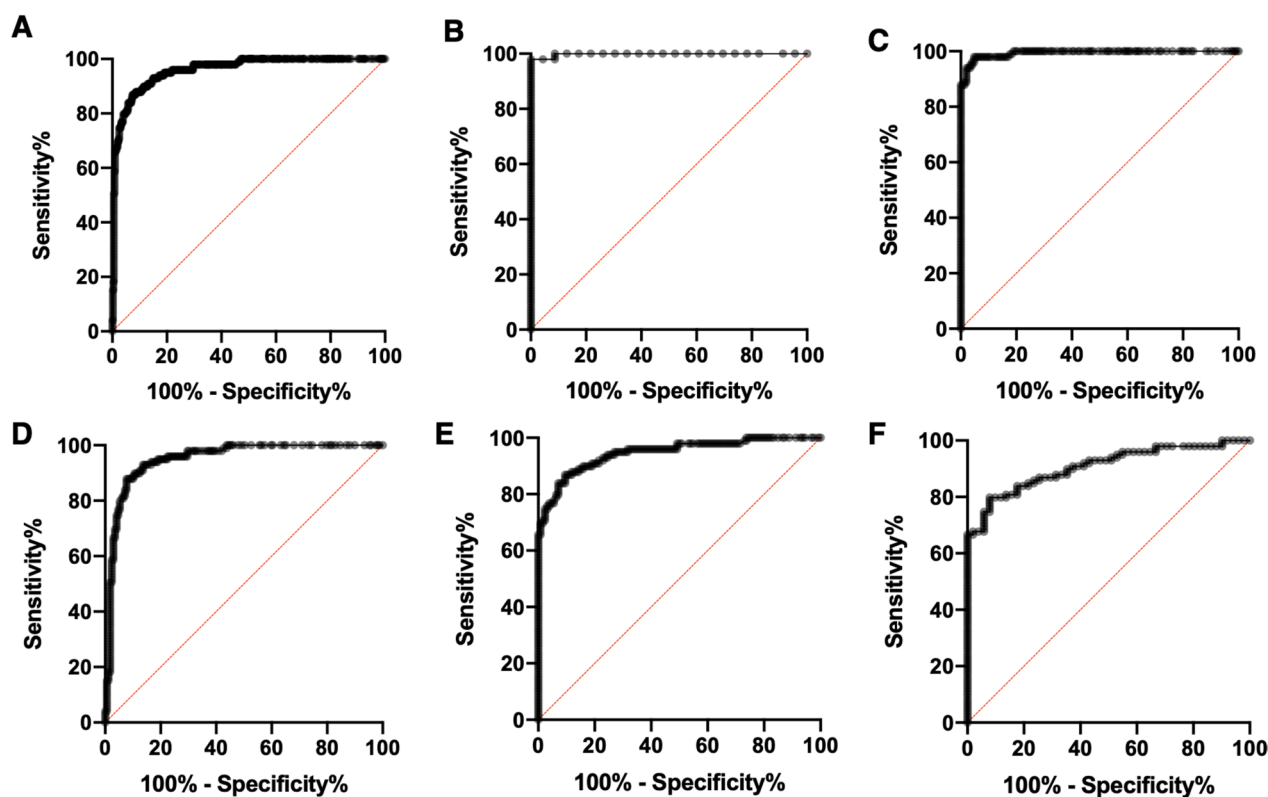


Fig. 3 ROC curves of sCAL turbo analyses. ROC analyses were performed to determine the overall accuracy of sCAL measurements in differentiating patient groups. The ROC curves show analyses for **A** SJIA vs all other patients ($AUC=0.960, p<0.001$), **B** SJIA vs healthy controls ($AUC=0.998, p<0.001$), **C** SJIA vs ALL ($AUC=0.993, p<0.001$), **D** SJIA vs nsJIA ($AUC=0.951, p<0.001$), **E** SJIA vs SIDs ($AUC=0.946, p<0.001$), and **F** SJIA vs infections ($AUC=0.908, p<0.001$)

laboratory settings to facilitate its use as a diagnostic routine test in clinical practice. The sCAL turbo assay on an automated instrument can provide results within 1 h. The combination of an automated process with less labor burden and time consumption also helps to limit resources. In a realistic estimation, the future cost efficiency could be comparable to other routine laboratory parameters. Of note, values generated with the formerly used MRP8/14 ELISA are higher than with the sCAL turbo assay (mean 2.5-fold difference). This has to be taken into account when comparing present values to those of previous studies. The mean values and cutoffs separating SJIA from infections or other diseases are now lower than reported for the commercial MRP8/14 ELISA [19] but remain comparable to previous data demonstrating performance of an experimental ELISA system [24, 25].

In the initial phase of disease when arthritis is absent, SJIA presents with nonspecific signs and symptoms (fever, rash, arthralgia, elevation of inflammatory markers), which can render definite diagnosis complicated and potentially delay targeted treatment [11].

Therefore, an early diagnosis is often challenging since many differential diagnoses need to be considered, including infections, malignancy, and other autoinflammatory or autoimmune diseases [19, 26, 27]. Biomarkers capable of distinguishing SJIA from its differential diagnoses can aid in this process if they are applicable in routine clinical practice, reproducible with high sensitivity and specificity, and ideally have a clear link to disease pathogenesis [13].

Up to date, the alarmins S100A8 and S100A9 (as complex also called myeloid-related protein 8 and 14, MRP8/14 or known as serum calprotectin) provide the only validated biomarker robustly discriminating between SJIA from differential diagnoses in routine clinical settings [19]. In contrast to other biomarker candidates, serum calprotectin analyses have been validated as a helpful tool supporting the diagnosis of SJIA in children with prolonged fever or inflammatory disease [20]. While our university hospital previously offered this test to centers within Germany, the aim is now to broaden access and establish uniform quantification standards.

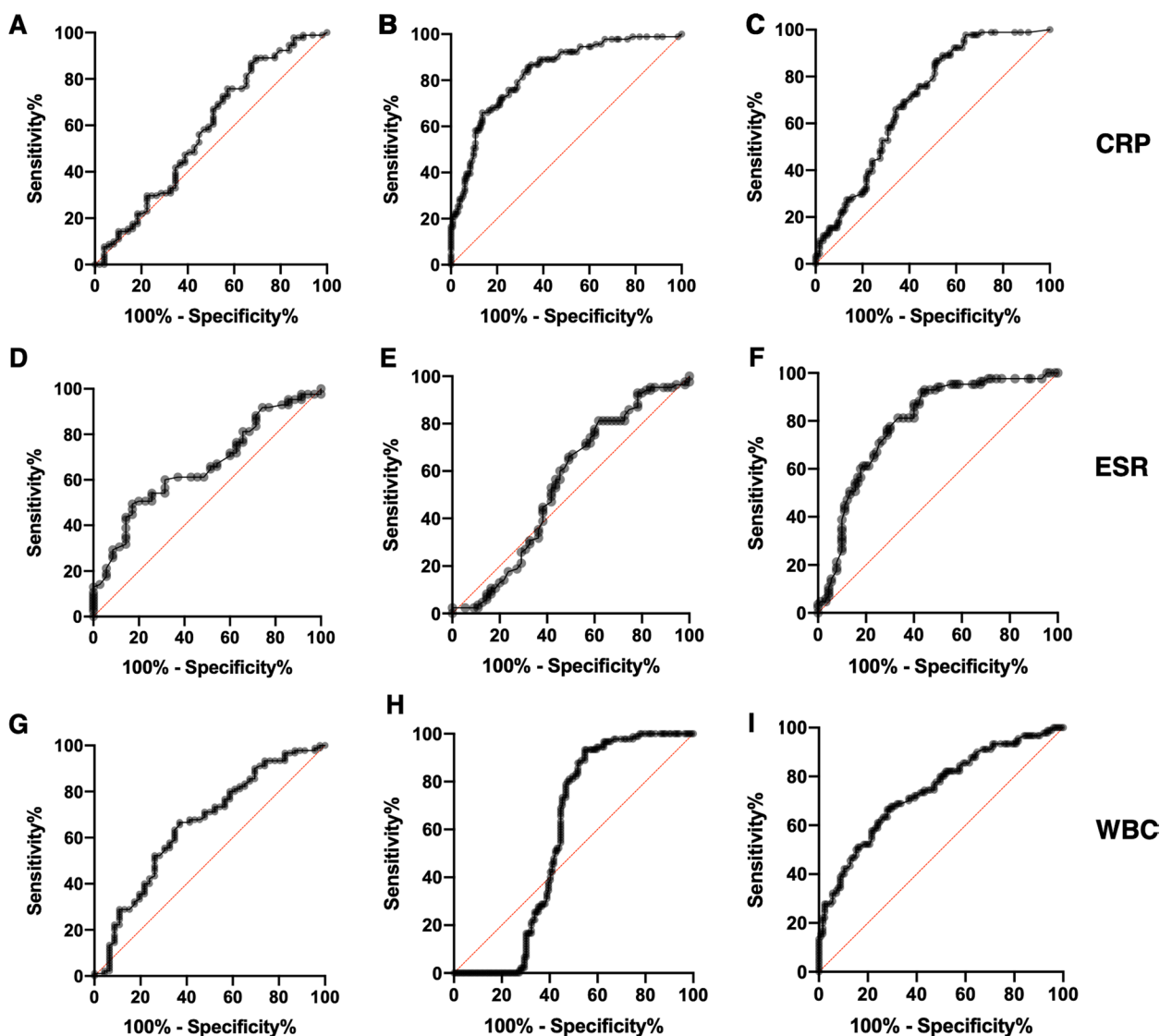


Fig. 4 ROC curves of routine inflammatory marker analyses. ROC analyses were performed to determine the overall accuracy of CRP, ESR, and WBC measurements in differentiating the major differential diagnoses in FUO, i.e., SJIA versus infections and leukemia. The ROC curves show analyses for **A** CRP in SJIA vs infections ($AUC=0.577, p=0.134$), **B** CRP in SJIA vs ALL ($AUC=0.831, p<0.001$), **C** CRP in SJIA vs SIDs ($AUC=0.702, p<0.001$), **D** ESR in SJIA vs infections ($AUC=0.658, p=0.007$), **E** ESR in SJIA vs ALL ($AUC=0.547, p=0.353$), **F** ESR in SJIA vs SIDs ($AUC=0.789, p<0.001$), **G** WBCs in SJIA vs infections ($AUC=0.656, p=0.003$), **H** WBCs in SJIA vs ALL ($AUC=0.575, p=0.056$), **I** WBCs in SJIA vs SIDs ($AUC=0.741, p<0.001$). FUO, fever of unknown origin; SID, systemic inflammatory diseases

Our study has relevant limitations. Firstly, SJIA and other included diagnoses are rather rare diseases; thus, a newly designed prospective study with prespecified aim to test the performance of various biomarkers in FUO was not achievable. Therefore, we rely on a collection of samples used in previous biomarker studies and thus need to accept inhomogeneous characteristics of the patient groups. However, all samples come from carefully designed biorepositories. Age and gender do not impact the sCAL results, at least not beyond infancy.

Sample handling errors are very unlikely, and the stability of the analyzed protein complex also facilitates the post hoc use as in the present study. As another limitation, while the collection of FUO patients was prospective and already used for the validation of the MRP8/14 ELISA, the samples from nsJIA and ALL patients were included retrospectively. Those were run on the new sCAL turbo assay exclusively. Thus, a comparison with historic biomarker results was not possible for these samples. Lastly, we were able to include patient samples from the most

important differential diagnoses of SJIA, but it was not feasible to include all possible causes of FUO and/or unclear signs of inflammation. It was demonstrated that S100 proteins differentiate well between SJIA even from many other hyperinflammatory conditions [28], but undoubtedly, further conditions including other malignancies than ALL, specific infections not represented by our collection, or further systemic inflammatory diseases such as multisystem inflammatory syndrome in children (MIS-C) may also mimic SJIA. This needs to be considered when interpreting our results. However, sCAL can specifically help to exclude ALL as a differential diagnosis, also due to the fact that neutrophil activity leading to its release into the serum is much lower in ALL, especially in cases with lower neutrophil counts (Supplemental Figs. 1 and 2).

In an individual patient with fever of unknown origin or unprovoked signs of inflammation, the differential diagnosis is impacted by a combination of medical history, clinical symptoms, laboratory features, and imaging findings. Depending on the level of suspicion, the demand for an exclusion of differential diagnoses with near certainty may vary before a definite diagnosis of SJIA is made. This warrants careful considerations, and the diagnostic process will always rely on an evaluation made with caution. While sCAL turbo levels above 10,500 ng/ml put SJIA on the top of the differential diagnoses list (with a specificity against infection of 82% and against ALL of 100%), other conditions cannot be ruled out completely. If the sCAL turbo levels are higher than 15,000 ng/ml, SJIA becomes even more likely (specificity ruling out infections 94%, ruling out ALL 100%), and in cases above 20,000 ng/ml, infections or leukemias can be assumed as highly unlikely. In clinical practice, such a gradual interpretation of sCAL turbo results in combination with other signs and symptoms can steer the workup and facilitate therapeutic decisions.

Conclusions

An immunoturbidimetric assay for serum-calprotectin (MRP8/14, S100A8/A9) analyses could be demonstrated as a helpful tool supporting the diagnosis of SJIA in children with prolonged fever or inflammatory disease. The implications are profound as making the correct diagnosis of SJIA can be challenging. Our findings provide evidence that S100A8/A9 are not only mechanistic biomarkers that help to distinguish SJIA from its differential diagnoses with high sensitivity and specificity but moreover can be analyzed in a routine laboratory using the sCAL turbo assay on automated standard instruments. In clinical practice, this enables clinicians to obtain reliable result within a few hours, thus facilitating the diagnostic workup. Rapid

diagnosis is of high relevance for clinicians and patients, enabling start of targeted therapies to stop the immune activation underlying SJIA as early as possible.

Supplementary Information

The online version contains supplementary material available at <https://doi.org/10.1186/s40348-023-00168-0>.

Additional file 1: Supplemental Table 1. Additional details of patient subgroups. **Supplemental Table 2.** Descriptive statistics of sCAL in different disease groups. **Supplemental Table 3.** Accuracy of sCAL turbo measurements in differentiating groups at higher cut-off levels. **Supplemental Table 4.** List of abbreviations.

Additional file 2: Supplemental Fig. 1. Correlation between sCAL turbo and ANC. Spearman's ρ correlations were calculated in 147 samples with sCAL turbo and ANC (absolute neutrophil count per μ l). **Supplemental Fig. 2.** Results of sCAL turbo measurements in ALL. Results of sCAL measurements in ALL patient groups divided into those with ANC <500/ μ l ($n=81$) or above ($n=66$) are shown using individual scatter plots, with red line showing median, error bars showing interquartile range (logarithmic scale of y-axis). *** $p<0.001$ (Mann-Whitney U test).

Acknowledgements

Not applicable.

Authors' contributions

MS, CP, CK, HW, CH, DH and BS acquired laboratory data; DF, MS, CP and BS analyzed laboratory data; DF, MS, CP, NB, MG, HW, CH, LB, AF, CM, EN, MR, HH, BKA, TH, DH and CN collected and analyzed clinical data; DF and BS designed the study; Data analysis & interpretation: all authors; DF wrote the first manuscript draft; further manuscript drafting & revision: all authors. All authors read and approved the final manuscript.

Funding

Open Access funding enabled and organized by Projekt DEAL.

Availability of data and materials

All data generated or analyzed during this study are included in this published article (and its supplementary information files). The original datasets are available from the corresponding author on reasonable request.

Declarations

Ethics approval and consent to participate

The patients with fever of unknown origin were collected at Muenster University as reported before. The study was approved by the Medical Ethics Committee at the University of Muenster, Muenster, Germany (Az 2014–637-f-S). The ALL cohort included consecutive cases from Aalborg and Aarhus University Hospitals. The study was approved by the Medical Ethics Committee (1–10-72–206-19) and the Danish Data Protection Agency (1–16-02–214-16). Patients with nonsystemic JIA were from the Nordic JIA cohort as previously described in detail. The study was approved by the national research committees (1–10-72–280-13, 2012/2051, Dnr 2014/413–31, 174/13/03/ 03/2014). All patients/caregivers provided informed consent, and the study is performed in accordance with the Helsinki Declaration.

Consent for publication

Not applicable.

Competing interests

DF received speaker fees/honoraria from Chugai-Roche, Novartis and SOBI as well as research support from Novartis, Pfizer and SOBI; CK has received consulting fees from Novartis and Swedish Orphan Biovitrum (SOBI) and received research support from Novartis. HW has received honoraria (lecture fees) from Novartis and Takeda, and travel support from Octapharma and CSL-Behring; CH has received travel support from Pfizer; CM received speaker fees/

honoraria from Novartis, Sobi and MSD; DH received speaker fees/honoraria from Novartis and SOBI; CN is employee of BÜHLMANN Laboratories AG. The other authors have no competing interests to disclose.

Author details

¹Department of Pediatric Rheumatology and Immunology, University Children's Hospital Muenster, Muenster D-48149, Germany. ²Department of Pediatric and Adolescent Medicine, Aalborg University Hospital, Aalborg, Denmark. ³Department of Pediatrics and Adolescent Medicine, Aarhus University Hospital, Aarhus, Denmark. ⁴Department of Women's and Children's Health, Uppsala University, Uppsala, Sweden. ⁵Department of Pediatrics, Institute of Clinical Sciences, Sahlgrenska Academy, University of Gothenburg, Gothenburg, Sweden. ⁶Department of Pediatrics, Copenhagen University Hospital, Copenhagen, Denmark. ⁷Department of Pediatrics, University Hospital of North Norway, Tromsø, Norway. ⁸Department of Clinical Medicine, Arctic University of Norway, Tromsø, Norway. ⁹Department of Pediatrics, St. Olavs Hospital, Trondheim, Norway. ¹⁰Department of Clinical and Molecular Medicine, Norwegian University of Science and Technology, Trondheim, Norway. ¹¹Department of Pediatric Hematology-Oncology, University of Duisburg-Essen, Essen, Germany. ¹²Department of Applied Health Sciences, University of Applied Sciences Bochum, Bochum, Germany. ¹³BÜHLMANN Laboratories AG, Schönenbuch, Switzerland. ¹⁴Central Laboratory, University Hospital Muenster, Muenster, Germany.

Received: 17 August 2023 Accepted: 9 October 2023

Published online: 25 October 2023

References

- Petty RE, Southwood TR, Manners P, Baum J, Glass DN, Goldenberg J et al (2004) International League of Associations for Rheumatology classification of juvenile idiopathic arthritis: second revision, Edmonton, 2001. *J Rheumatol* 31(2):390–392
- Martini A, Ravelli A, Avcin T, Beresford MW, Burgos-Vargas R, Cuttita R et al (2019) Toward new classification criteria for juvenile idiopathic arthritis: first steps, pediatric rheumatology international trials organization international consensus. *J Rheumatol* 46(2):190–197
- Nigrovic PA (2014) Review: is there a window of opportunity for treatment of systemic juvenile idiopathic arthritis? *Arthritis Rheumatol* 66(6):1405–1413
- Kessel C, Hedrich CM, Foell D (2020) Innately adaptive or truly autoimmune: is there something unique about systemic juvenile idiopathic arthritis? *Arthritis Rheumatol* 72(2):210–219
- Schulert G, Kessel C (2023) Molecular pathways in the pathogenesis of systemic juvenile idiopathic arthritis. *Rheum Dis Clin North Am* 49(4):895–911
- Pardeo M, Rossi MN, PiresMarafon D, Sacco E, Bracaglia C, Passarelli C et al (2021) Early treatment and IL1RN single-nucleotide polymorphisms affect response to anakinra in systemic juvenile idiopathic arthritis. *Arthritis Rheumatol* 73(6):1053–1061
- Ter Haar NM, Tak T, Mokry M, Scholman RC, Meerding JM, de Jager W et al (2018) Reversal of sepsis-like features of neutrophils by interleukin-1 blockade in patients with systemic-onset juvenile idiopathic arthritis. *Arthritis Rheumatol* 70(6):943–956
- Ter Haar NM, van Dijkhuizen EHP, Swart JF, van Royen-Kerkhof A, El Idrissi A, Leek AP et al (2019) Treatment to target using recombinant interleukin-1 receptor antagonist as first-line monotherapy in new-onset systemic juvenile idiopathic arthritis: results from a five-year follow-up study. *Arthritis Rheumatol* 71(7):1163–1173
- Vastert SJ, de Jager W, Noordman BJ, Holzinger D, Kuis W, Prakken BJ et al (2014) Effectiveness of first-line treatment with recombinant interleukin-1 receptor antagonist in steroid-naïve patients with new-onset systemic juvenile idiopathic arthritis: results of a prospective cohort study. *Arthritis Rheumatol* 66(4):1034–1043
- Hinze C, Wittkowski H, Lainka E, Haas JP, Kallinich T, Foell D (2022) Characteristics and disease course of patients with systemic juvenile idiopathic arthritis without arthritis in the German AID-NET cohort. *Pediatr Rheumatol Online J* 20:002
- Hinze CH, Holzinger D, Lainka E, Haas JP, Speth F, Kallinich T et al (2018) Practice and consensus-based strategies in diagnosing and managing systemic juvenile idiopathic arthritis in Germany. *Pediatr Rheumatol Online J* 16(1):7
- DeWitt EM, Kimura Y, Beukelman T, Nigrovic PA, Onel K, Prahalad S et al (2012) Consensus treatment plans for new-onset systemic juvenile idiopathic arthritis. *Arthritis Care Res (Hoboken)* 64(7):1001–1010
- Gohar F, Kessel C, Lavric M, Holzinger D, Foell D (2016) Review of biomarkers in systemic juvenile idiopathic arthritis: helpful tools or just playing tricks? *Arthritis Res Ther* 18:163
- Gohar F, McArdle A, Jones M, Callan N, Hernandez B, Kessel C et al (2019) Molecular signature characterisation of different inflammatory phenotypes of systemic juvenile idiopathic arthritis. *Ann Rheum Dis* 78(8):1107–1113
- Kessel C, Holzinger D, Foell D (2013) Phagocyte-derived S100 proteins in autoinflammation: putative role in pathogenesis and usefulness as biomarkers. *Clin Immunol* 147(3):229–241
- Frosch M, Ahlmann M, Vogl T, Wittkowski H, Wulffraat N, Foell D et al (2009) The myeloid-related proteins 8 and 14 complex, a novel ligand of toll-like receptor 4, and interleukin-1beta form a positive feedback mechanism in systemic-onset juvenile idiopathic arthritis. *Arthritis Rheum* 60(3):883–891
- Frosch M, Vogl T, Seeliger S, Wulffraat N, Kuis W, Viemann D et al (2003) Expression of myeloid-related proteins 8 and 14 in systemic-onset juvenile rheumatoid arthritis. *Arthritis Rheum* 48(9):2622–2626
- Holzinger D, Foell D, Kessel C (2018) The role of S100 proteins in the pathogenesis and monitoring of autoinflammatory diseases. *Mol Cell Pediatr* 5(1):7
- Park C, Miranda-Garcia M, Berendes R, Horneff G, Kuemmerle-Deschner J, Ganser G et al (2022) MRP8/14 serum levels as diagnostic markers for systemic juvenile idiopathic arthritis in children with prolonged fever. *Rheumatology (Oxford)* 61(7):3082–3092
- Pardeo M, Vastert SJ, De Benedetti F (2022) It is about time: the first validated biomarker for early diagnosis of systemic juvenile idiopathic arthritis. *Rheumatology (Oxford)* 61(7):2724–2725
- Brix N, Kessel C, Foell D, Hasle H, Albertsen BK, Bruun NH, et al (2023) Phagocyte-related S100 proteins and cytokines in acute lymphoblastic leukemia and their prognostic value. *Leuk Lymphoma* 64(5):981–989
- Brix N, Glerup M, Foell D, Kessel C, Wittkowski H, Berntson L et al (2023) Inflammatory biomarkers can differentiate acute lymphoblastic leukemia with arthropathy from juvenile idiopathic arthritis better than standard blood tests. *J Pediatr* 258:113406
- Glerup M, Rypdal V, Arnstad ED, Ekelund M, Peltoniemi S, Aalto K et al (2020) Long-term outcomes in juvenile idiopathic arthritis: eighteen years of follow-up in the population-based Nordic juvenile idiopathic arthritis cohort. *Arthritis Care Res (Hoboken)* 72(4):507–516
- Holzinger D, Frosch M, Kastrup A, Prince FH, Otten MH, Van Suijlekom-Smit LW et al (2012) The Toll-like receptor 4 agonist MRP8/14 protein complex is a sensitive indicator for disease activity and predicts relapses in systemic-onset juvenile idiopathic arthritis. *Ann Rheum Dis* 71(6):974–980
- Foell D, Wulffraat N, Wedderburn LR, Wittkowski H, Frosch M, Gerss J et al (2010) Methotrexate withdrawal at 6 vs 12 months in juvenile idiopathic arthritis in remission: a randomized clinical trial. *JAMA* 303(13):1266–1273
- Shimizu M, Nakagishi Y, Yachie A (2013) Distinct subsets of patients with systemic juvenile idiopathic arthritis based on their cytokine profiles. *Cytokine* 61(2):345–348
- Wittkowski H, Frosch M, Wulffraat N, Goldbach-Mansky R, Kallinich T, Kuemmerle-Deschner J et al (2008) S100A12 is a novel molecular marker differentiating systemic-onset juvenile idiopathic arthritis from other causes of fever of unknown origin. *Arthritis Rheum* 58(12):3924–3931
- Kessel C, Fall N, Grom A, de Jager W, Vastert S, Strippoli R et al (2021) Definition and validation of serum biomarkers for optimal differentiation of hyperferritinaemic cytokine storm conditions in children: a retrospective cohort study. *Lancet Rheumatol* 3(8):E563–E573

Publisher's Note

Springer Nature remains neutral with regard to jurisdictional claims in published maps and institutional affiliations.