



Warmer temperature decreases the maximum length of six species of marine fishes, crustacean, and squid in New Zealand

Charles P. Lavin · Cesc Gordó-Vilaseca ·
Fabrice Stephenson · Zhiyuan Shi ·
Mark John Costello

Received: 14 July 2021 / Accepted: 30 March 2022 / Published online: 9 April 2022
© The Author(s) 2022

Abstract As global oceans continue to warm and deoxygenate, it is expected that marine ectotherms will reduce in body size resulting from the interactive effects of temperature and dissolved oxygen availability. A temperature-size response describes how wild populations of ectothermic species grow faster and reach a smaller size within warmer temperatures. While temperature-size responses are well observed in marine ectotherms, the mechanisms underpinning such a reduction in body size remain debated. Here, we analyse the relative influence of temperature, dissolved oxygen concentration, and geographic location (which encompasses multiple latent variables), on the maximum body length of four fish, one crustacean, and one squid species, which inhabit shallow to deep sea (1000 m) New Zealand waters across a

temperature gradient of 1.5 to 18 °C. We found that all study species displayed a temperature-size response, with the strongest response exhibited by the largest species, hoki (*Macruronus novaezelandiae*). We also found that temperature was more important than dissolved oxygen concentration in determining maximum body length, as dissolved oxygen levels were at or near saturation in the study area. Our results suggest that larger-bodied species may experience the strongest temperature-size responses, and support expectations from the gill-oxygen limitation theory (GOLT) and the oxygen and capacity limited thermal tolerance (OCLTT) concept that increases in oxygen demand may be size- and temperature-dependent, thus driving a reduction in maximum body length of marine ectotherms with warming.

Supplementary Information The online version contains supplementary material available at <https://doi.org/10.1007/s10641-022-01251-7>.

C. P. Lavin (✉) · C. Gordó-Vilaseca · Z. Shi ·
M. J. Costello
Faculty of Biosciences and Aquaculture, Nord University,
Bodø, Norway
e-mail: charles.p.lavin@nord.no

F. Stephenson
National Institute of Water and Atmospheric Research
(NIWA), Hamilton, New Zealand

F. Stephenson
School of Science, University of Waikato, Hamilton,
New Zealand

Keywords Temperature-size response · Water-breathing ectotherms · Maximum body length · Gill-oxygen limitation theory (GOLT) · The Oxygen and Capacity Limited Thermal Tolerance (OCLTT) · Generalised additive models (GAMs)

Introduction

As the majority of marine animals are water-breathing ectotherms, temperature and dissolved oxygen concentration in sea water represent key environmental variables that influence their fitness and geographic distribution (Pauly 2010; Ern 2019). Indeed,

temperature and oxygen may impact the distribution of marine organisms more so than the availability of food resources (Kramer 1987; Pauly 2021). In turn, if global oceans continue to warm and deoxygenate (e.g., Schmidtke et al. 2017; Breitburg et al. 2018; Bindoff et al. 2019; Laufkötter et al. 2020), water-breathing ectotherms may experience deleterious physiological effects associated with thermal stress and hypoxia (Pörtner 2001, 2002). In general, the response of marine water-breathing ectotherms to warming and deoxygenation consists of shifting their distribution to areas with more suitable environmental conditions (Deutsch et al. 2015; Poloczanska et al. 2016). Increasingly, it is also suggested that a response to warming and deoxygenation is the reduction of body size (Gardner et al. 2011).

Ocean-warming-induced changes in body size are predicted to impact water-breathing ectotherms globally (Cheung et al. 2013). Changes in body size can result from the complex interaction of temperature and dissolved oxygen as warming-induced increases in oxygen demands may not be met by an increase in available dissolved oxygen supply (Pörtner 2001; Pörtner and Knust 2007; Pauly 2010, 2021). While reductions in body size have been widely observed for aquatic ectotherms (Daufresne et al. 2009), the mechanisms behind this response remain debated (Lefevre et al. 2017; Pauly 2021).

The temperature-size rule (TSR) describes how ectothermic species grow faster and mature at a smaller size when reared at warmer temperatures (Atkinson 1994). The TSR refers to the plasticity of individuals throughout ontogeny, and thus can display differing effects to both size at maturity and maximum asymptotic size (Hoefnagel et al. 2018; Verberk et al. 2021). In wild populations, clines in body size across latitudinal gradients, including temperature and dissolved oxygen concentrations, can resemble the body-size responses observed at different laboratory rearing temperatures (Horne et al. 2015), referred to in the present study as a temperature-size response. While temperature-size responses are widely observed, several explanations aim to resolve the mechanisms behind the interaction of environment and growth (Deutsch et al. 2015; Pörtner et al. 2017; Clarke et al. 2021; Pauly 2021; Verberk et al. 2021).

A temperature-size response may depend on the species body size (Rubalcaba et al. 2020), sensitivity

to changes in temperature or dissolved oxygen concentration (Forster et al. 2011; Hoefnagel and Verberk 2015), life history (Weber et al. 2015; Audzijonyte et al. 2020), geography (Deutsch et al. 2020; Clarke et al. 2021), environmental niche (Rypel 2014), feeding strategy and behaviour (van Rijn et al. 2017), and physiology (Atkinson et al. 2006). In order to elucidate further the mechanisms behind a temperature-size response, it is useful to compare the degree to which responses differ between species, rather than testing if a species displays a response at all (Verberk et al. 2021).

In the present study, we compare the strength of the temperature-size response of species of fishes, crustacean, and squid in New Zealand waters. Our study relies on generalised additive models (GAMs) fitted to trawl research data. The four fish species included in this study are hoki, *Macruronus novaezelandiae* Hector 1871, Australasian snapper, *Pagrus auratus* Forster 1801, southern blue whiting, *Micromesistius australis* Norman 1937, and orange roughy, *Hoplostethus atlanticus* Collett 1889, while the two invertebrate species are New Zealand arrow squid, *Nototodarus sloanii* Gray 1849, and New Zealand scampi, *Metanephrops challengeri* Balss 1914. Hereafter, the species are called hoki, snapper, blue whiting, orange roughy, arrow squid, and scampi. Species nomenclature follows the World Register of Marine Species (Horton et al. 2021).

The inclusion of two invertebrate species in the present study enabled the comparison of variable temperature-size responses between taxonomic groups, which has traditionally been based on studies of fishes (Pauly 2021). Further, as the bulk of research focuses on body size at maturation and warming, we investigated the influence of temperature and dissolved oxygen concentration on maximum body length, as the mechanisms between these responses may be different (Hoefnagel et al. 2018). Moreover, considering the complex interaction of temperature and dissolved oxygen within a temperature-size response, we assessed the relative importance of model covariates in order to parse between temperature, dissolved oxygen concentration and geographic location (representing other, latent environmental variables) in determining maximum body length of the study species. Doing so may reveal the relative influence of temperature and oxygen in eliciting a temperature-size response in water-breathing

ectotherms. Overall, results from related research have found that a negative temperature-size response (e.g., smaller in warmer temperatures) was strongest in larger or more active species (Forster et al. 2012; van Rijn et al. 2017); therefore, we hypothesise that larger study species will exhibit a relatively stronger temperature-size response than smaller species.

Methods

Study area

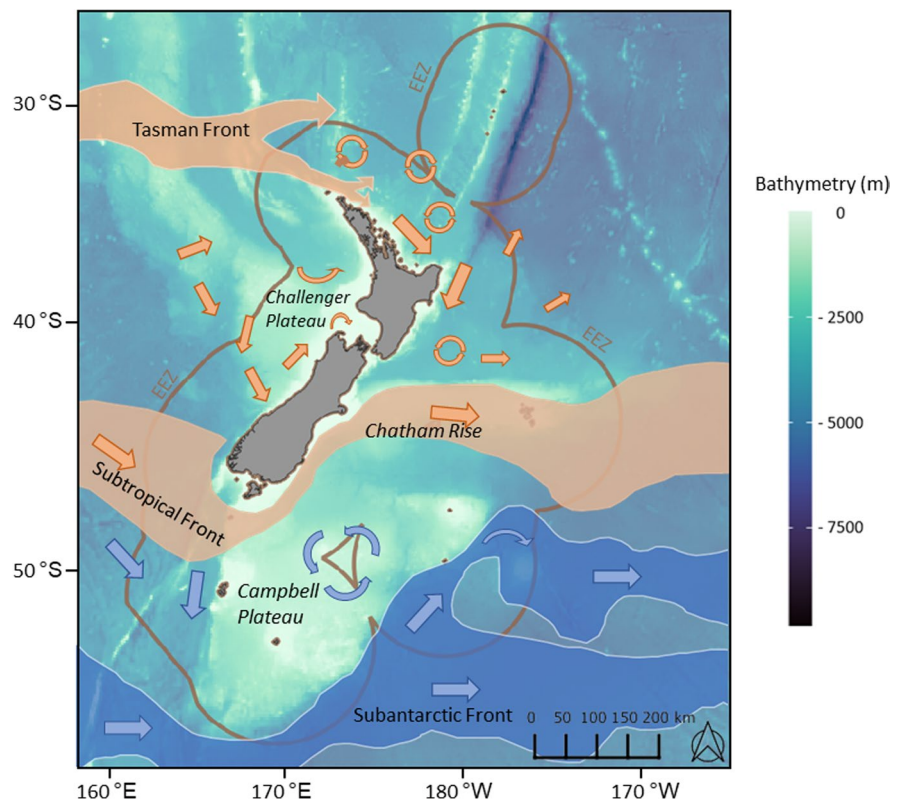
Our study area was the exclusive economic zone (EEZ) of New Zealand, which spans latitudes 30 to 55°S (Fig. 1). The region is characterised by the influence of several fronts, which result in a broad temperature gradient, as summer sea surface temperatures reach over 21 °C in the north and 13 °C in the south, while winter sea surface temperatures can be as low as 5 °C in the north and 2 °C in the south (Garner 1969). From the north north-west, the Tasman Front and the Subtropical Front direct warm water across

both islands and most of the EEZ, while colder and more nutrient-rich water is brought by the Subantarctic Front from the south (Leathwick et al. 2006a) (Fig. 1).

Trawl surveys

The length data employed in analyses were derived from bottom trawl research surveys carried out between 1979 and 2021 (NIWA 2014; SWPRON 2017). These surveys cover the continental shelf surrounding New Zealand, as well as the extensive submarine plateaus throughout the area (Leathwick et al. 2006a). In order to minimise variation between gear and sampling techniques, data were filtered to only include samples gathered by bottom trawl from trawling events that were conducted over a maximum of 3.5 nautical miles. Since the objective of the long-term bottom trawl research surveys is to assess changes in fished stocks, the geographical distribution of sampling effort is biased towards the most productive areas, including the Chatham Rise, the Campbell

Fig. 1 Map of the study area, indicating notable areas mentioned in the text, plus bathymetry, cold (violet arrows), and warm (ochre arrows) ocean currents, fronts (brown and violet shade), and the Exclusive Economic Zone (EEZ) of New Zealand (red line). This figure has been modified from Stephenson et al. (2018), and was created using QGIS (QGIS 2022)



Plateau, and the Challenger Plateau (Figs. 1 and 2; Francis et al. 2002).

Study species

From all species present in the bottom trawl research survey database ($n=253$), we selected the six most abundant fish and invertebrate species in terms of the number of individuals and frequency of encounter per sampling event. Hoki is a relatively long-lived, benthic-pelagic fish that is most abundant between 200–800 m depth (Papa et al. 2021). Snapper is a coastal fish species found around rocky reef ecosystems at depths down to 200 m, but is most commonly encountered between 10–50 m (Papa et al. 2021). Blue whiting is a mesopelagic fish found along the outer shelf and slope of New Zealand waters, between 130–800 m depth (Niklitschek et al. 2010). Orange roughy is a slow-growing, long-lived, bathypelagic fish that is found along continental slope margins, seamounts and ridges, between 700–1500 m depth (Papa et al. 2021). Arrow squid is a large pelagic squid that can be found as deep as 600 m depth, although it is primarily found shallower than 300 m (Jackson et al. 2000). Lastly, scampi burrows in soft

sediments around the continental shelf and slope between 140–500 m depth (Smith 1999; Yaldwyn and Webber 2011). In the present dataset, the mean depth of species recorded ranged from 58 m (snapper) to 947 m (orange roughy) (Fig. 3a), mean temperatures from 4 °C (orange roughy) to 16 °C (snapper) (Fig. 3b), and mean dissolved oxygen concentrations ranged from 6 mg/L (orange roughy) to 8 mg/L (blue whiting) (Fig. 3c).

Data and initial exploratory analyses

The total number of length observations for all six study species in the trawl research survey database was 22,661. We defined the maximum length for each species' record as the 95th quantile value of length measurements (cm) taken at each sampling station (i.e., trawling event). All fish species are reported as standard length (SL), arrow squid as mantle length (ML), and scampi as carapace length (CL) (Fig. 3d). Hoki standard lengths were converted from total length (Kloser et al. 2011), snapper from fork length (Ferrell and Sumpton 1997), and blue whiting from fork length (Cohen et al. 1990) using reported length-length linear relationships. Body length was considered the most robust response variable to estimate maximum body size, rather than weight. Related to feeding, energy storage, or reproduction, weight in marine ectotherms is known to fluctuate seasonally (Craig et al. 2000; Mello and Rose 2005), as well, length-weight relationships vary between species based on body shape and other physiological factors (Jisr et al. 2018).

We identified the Gamma distribution as the best distribution model for maximum length data using diagnostics from the *fitdistrplus* package (Delignette-Muller and Dutang 2015) in R (Team R Development Core 2021). Other information gathered from the bottom trawl research survey database included latitude and longitude, expressed in Universal Transverse Mercator (UTM) coordinates (i.e., eastings and northings) in the models, as well as mean depth (m) of trawl. Data for mean temperature and dissolved oxygen concentration at maximum depth layer were extracted from the online database Bio-Oracle (Assis et al. 2018) and associated with the latitude and longitude of samples. These data layers are produced using monthly averages of climate data from 2000 to 2014 (Assis et al. 2018). Dissolved oxygen concentration

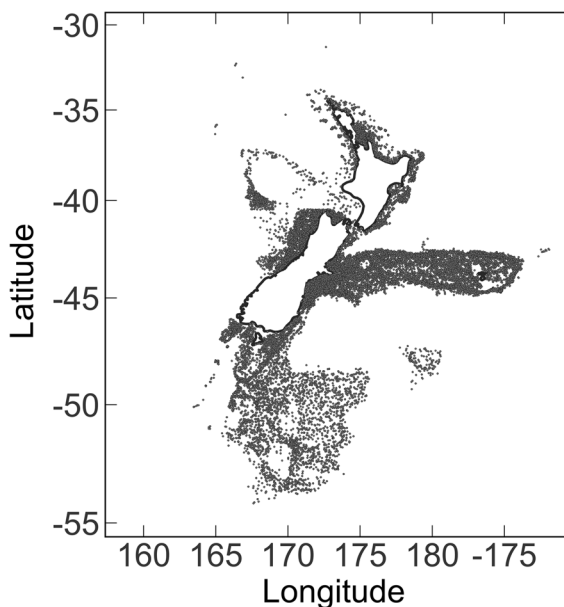


Fig. 2 Location of all trawling events included in the trawl research survey database between 1979 and 2021 in New Zealand waters (NIWA 2014; SWPRON 2017). This figure was created using QGIS (QGIS 2022)

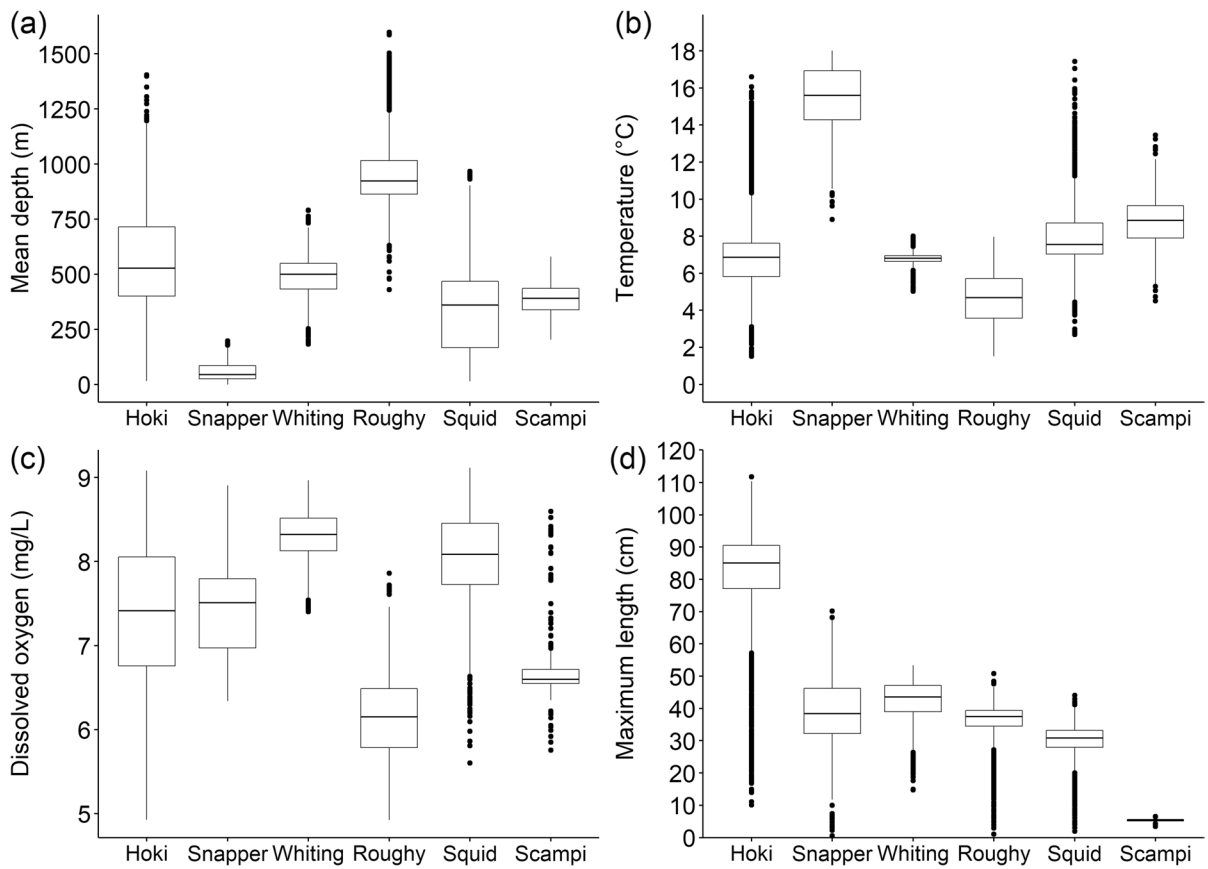


Fig. 3 Boxplot summary of sampling and environmental information, including the interquartile range, minimum and maximum values (lines), plus outliers (dots, 1.5 times the interquartile range from quartiles), for hoki, snapper, blue whiting, orange roughy, arrow squid and scampi. Summary information includes **a** mean depth (m), **b** temperature at maxi-

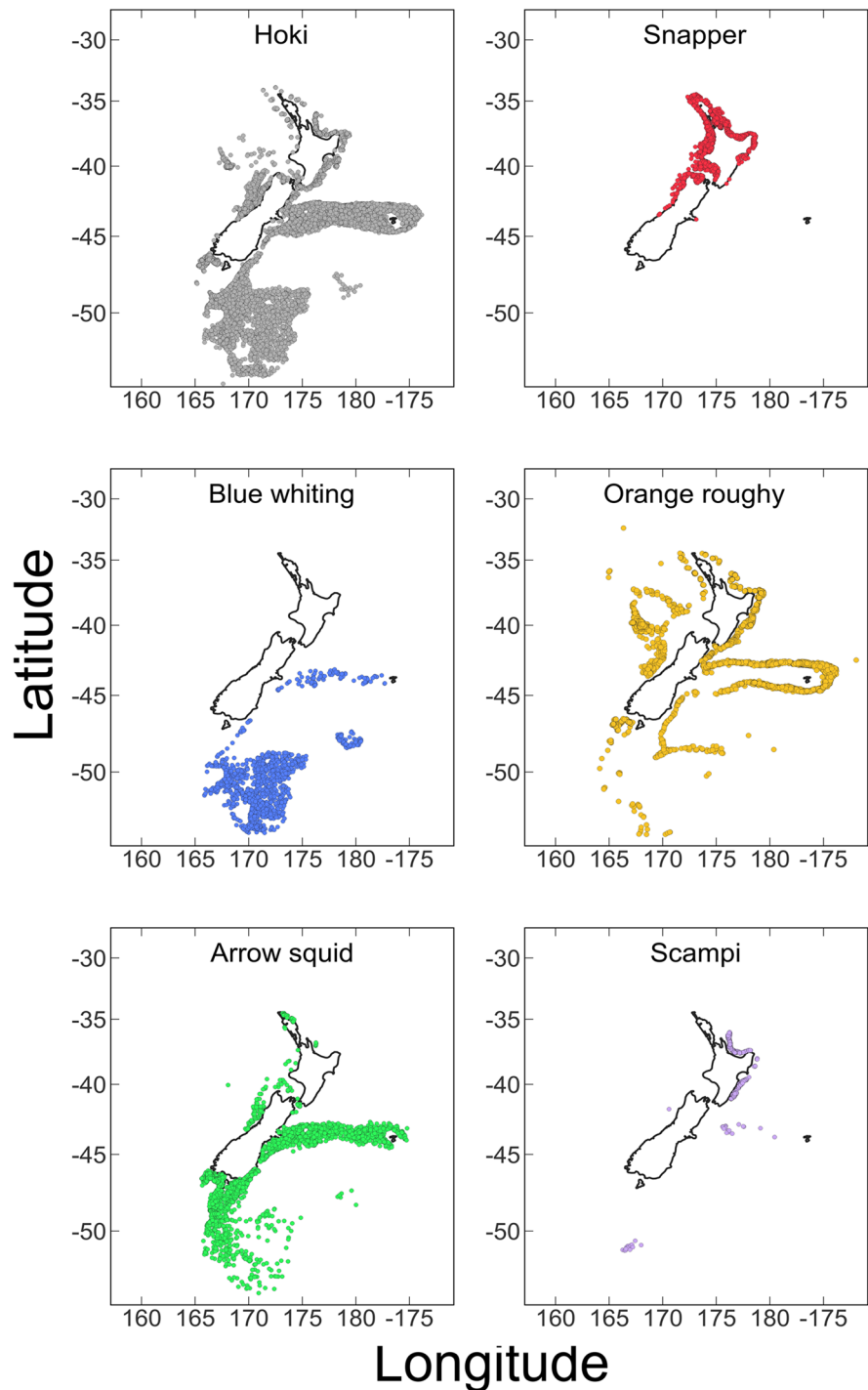
imum depth (°C) from Bio-Oracle, **c** dissolved oxygen concentration at maximum depth (mg/L) from Bio-Oracle, and **d** maximum length (cm) records (NIWA 2014; SWPRON 2017; Assis et al. 2018). This figure was created using R Studio (Team R Development Core 2021)

data from Bio-Oracle were converted from mols/m^{-3} to mg/L in line with unit conversions provided by the International Council for the Exploration of the Sea (ICES n.d.). In situ temperature was recorded during trawling events, but long-term mean temperature and dissolved oxygen concentration derived from Bio-Oracle are likely to better reflect prevailing climatology, and were, therefore, considered to be more relevant for our analyses.

Before model fitting, we explored the distribution of the response variable (maximum length) and explanatory covariates to identify potential outliers and subsequently removed them (Zuur et al. 2010). Following this data trimming, the total number of observations for the six study species was reduced

from 22,661 to 22,631 (Fig. 4). We then explored the range of maximum length (cm), depth (m), and environmental covariates of the study species, as well as the relationship between environmental covariates and location. Thereafter, we evaluated the degree of collinearity between temperature, dissolved oxygen concentration, depth, eastings, and northings for each species (Supplementary Fig. 1). A Pearson’s correlation coefficient greater than 0.7 in absolute value was considered indicative of collinearity (Leathwick et al. 2006b; Dormann et al. 2013). This collinearity analysis was warranted as GAMs (and other regression methods) are sensitive to correlated continuous covariate variables (Guisan et al. 2002; Dormann et al. 2013). For comparison

Fig. 4 Observed distribution of the data used in the present study for the six study species, including hoki ($n=9420$), snapper ($n=1673$), blue whiting ($n=1308$), orange roughy ($n=6763$), arrow squid ($n=2912$), and scampi ($n=555$) (NIWA 2014; SWPRON 2017). Each record indicates a trawl sample station, where the 95th quantile length measurement was extracted. This figure was created using QGIS (QGIS 2022)



purposes, depth was omitted from GAMs as it was found to be collinear with temperature and dissolved oxygen concentration for hoki and snapper respectively (Supplementary Fig. 1). This allowed

the same full factorial model for all species to be undertaken, whilst preserving the model form that incorporates these key environmental variables central to our hypotheses. Moreover, we expect

variation in depth to be contained within the effect of geographic location as a model covariate.

Model fitting and evaluation

We utilised GAMs to investigate the influence of temperature and dissolved oxygen concentration on the species' maximum lengths. A tensor product smooth between eastings and northings (the effect of geographic position) was included to serve as a proxy for latent environmental covariates that were otherwise not included in the model (e.g., depth) and account for broad-scale spatial autocorrelation in the length data (Wood 2006; Grüss et al. 2016, 2018a, 2021).

To facilitate equivalent comparisons between species, we initially fitted the same “full” Gamma GAM to maximum length data for each species using the “gam” function from the *mgcv* package in the R environment (Wood 2006; Team R Development Core 2021) following the equation,

$$g(L) = te(X, Y) + s(\text{Temperature}) + s(\text{Oxygen}) \quad (1)$$

where L is maximum length of the species under consideration, g is the log-link function between maximum length and each term on the right side of the equation, $te(X, Y)$ is the tensor product smooth between eastings and northings, and s is the thin plate regression spline with shrinkage ($bs = \text{“ts”}$ specified in the smooth function of “gam” within the *mgcv* library) fitted to temperature and dissolved oxygen concentration (Grüss et al. 2018a). Each thin plate regression spline was limited to four degrees of freedom ($k=4$) to prevent overfitting and to preserve the interpretability of GAM results (Mannocci et al. 2017; Grüss et al. 2018a; Weijerman et al. 2019).

After running all GAMs using the same form (“full model”; Eq. 1) for all species, collinear or non-significant covariates were removed, including oxygen for snapper and arrow squid (non-significant), and northings for scampi (collinear with oxygen); then, models were re-run. We refer to the re-run models as the “final models.” The adjusted final models were compared to full models via Akaike's information criterion (AIC) via the “logLik” function of the *mgcv* package in R (Wood 2006; Team R Development Core 2021). When running the final models, an extra penalty was applied to temperature and dissolved oxygen concentration as their smoothing parameter

approached zero, which allowed for the complete removal of temperature or dissolved oxygen concentration from the model when its smoothing was equal to zero (Marra and Wood 2011; Grüss et al. 2014). Ultimately, using the results from final GAMs, we predicted the maximum length of each study species in light of its observed temperature range.

In order to acknowledge the potential effects of fishing pressure on reducing the maximum lengths of our study species, all final models were re-run twice, using records split into two periods based on their collection dates. These periods include a “past” fishing period (1979–1998) and a “recent” fishing period (1999–2021). Here, we assume that the past fishing period, and fishing effort preceding this period (“early” commercial fishing), were more likely to remove the largest individuals from stocks. In turn, we assume that there will no longer be a strong effect of fishing reflected in the predicted maximum body length of species across their temperature range within the recent period relative to the previous period. These assumptions are based on the observation that fished stocks are able to recover in maximum length following a reduction in exploitation rate (Worm et al. 2009).

An evaluation procedure similar to the leave group out cross validation (LGOCV) procedure was employed to validate full and final GAMs (Kuhn and Johnson 2013; Grüss et al. 2016) using two performance metrics: (1) the adjusted coefficient of determination (adjusted R^2), which is indicative of the proportion of the variance in maximum length explained by GAMs (Grüss et al. 2018b), and Spearman's rank correlation coefficients (Spearman's rho's) between the predicted and observed maximum length values. Briefly, our evaluation procedure for each model consisted of (1) splitting randomly the dataset of interest into a training dataset, which receives 70% of the data, and a test dataset, which receives 30% of the data; (2) repeating this ten times so that 10 training datasets and 10 test datasets are generated; (3) fitting a model to each of the 10 training datasets; and (4) performing an evaluation of the 10 fitted models with the test datasets using performance metrics (adjusted R^2 and Spearman's rho's in our case) (Grüss et al. 2016, 2020; Egerton et al. 2021). We considered that a given model passed the evaluation test if the median adjusted R^2 across all 10 replicates were greater than 0.1 (Legendre and Legendre 1998; Grüss et al. 2016)

and if the median Spearman's rho's across the 10 replicates was significantly different from zero (Grüss et al. 2014, 2021; Weijerman et al. 2019; Egerton et al. 2021).

In order to estimate the relative importance of temperature and dissolved oxygen concentration in our final GAMs, we followed the same approach as Grüss et al. (2016). For each species, this approach compares the predictions of the final model with the predictions of models after random permutation of the values of a given predictor (temperature, dissolved oxygen concentration, eastings, or northings) within the complete dataset fed into the GAM ("random GAMs") (Thuiller et al. 2012; Grüss et al. 2016). Thereafter, the index of relative importance of the predictors (temperature, dissolved oxygen

concentration, eastings, or northings) in explaining maximum length is obtained as one minus the Pearson's correlation coefficient between the predictions of the final model and the predictions from the random models (Grüss et al. 2016; Dove et al. 2020; Bolser et al. 2020).

Results

The length data employed in our models were found to be representative of those observed for the study species, including adult size classes, for all species (Table 1). The temperature data employed in models were found to represent a portion of the reported temperature ranges of species (Supplementary Table 1). Across the study area, there was a north to south latitudinal gradient of temperature and dissolved oxygen concentrations from approximately 19 °C and 7.5 mg/L to 7.5 °C and 9.5 mg/L. In deeper water layers, these gradients were still evident, although with higher variability (18 °C and 4.9 mg/L to 1.5 °C and 9 mg/L; Supplementary Fig. 2).

Temperature was found to have a significant effect on the maximum length of all six study species, while dissolved oxygen was found to be significant for three species: hoki, blue whiting, and orange roughy (Table 2). Following removal of collinear or non-significant covariates, the final GAMs for snapper, arrow squid and scampi differed from their original full models, while the final models for hoki, blue whiting, and orange roughy were identical to the original full models. Overall, the adjusted final models for snapper, arrow squid, and scampi provided little to no

Table 1 Observed and reported maximum length (cm) for hoki (standard length, SL), snapper (SL), blue whiting (SL), orange roughy (SL), arrow squid (mantle length, ML), and scampi (carapace length, CL). Reported maximum lengths: 1. Cohen et al. 1990 2. Randall et al. 1998, 3. Thomsen 1998, 4. Roper et al. 1984, 5. Cryer et al. 2005. Note: for comparison purposes, the reported maximum lengths for hoki, snapper, and blue whiting were converted to SL using published length-length linear relationships (see [methods](#))

Species	Observed maximum length (cm)	Reported maximum length (cm)
Hoki	111.7 SL	112.3 ¹
Snapper	70.1 SL	101.9 ²
Blue whiting	53.4 SL	84.6 ¹
Orange roughy	50.8 SL	59.9 ³
Arrow squid	44 ML	42.0 ⁴
Scampi	6.5 CL	6.0 ⁵

Table 2 Results for the full generalised additive models (GAMs) of all study species. Models express maximum length as a function of temperature, dissolved oxygen concentration,

and an interaction term (tensor product smooth) between eastings and northings (Eq. 1)

Species	n	Temperature			Dissolved oxygen concentration			Interaction between eastings and northings			Adj. R ²
		edf	F	p	edf	F	p	edf	F	p	
Hoki	9420	2.98	1378.92	<0.001	2.82	32.59	<0.001	21.47	74.75	<0.001	0.46
Snapper	1673	1.10	9.90	<0.001	<0.001	0	0.76	11.59	18.96	<0.001	0.28
Blue whiting	1308	1.85	4.49	<0.001	2.83	21.46	<0.001	15.11	14.53	<0.001	0.22
Orange roughy	6763	2.67	34.98	<0.001	2.82	23.02	<0.001	18.34	35.13	<0.001	0.13
Arrow squid	2912	2.60	16.97	<0.001	0.05	0.02	0.24	14.64	34.94	<0.001	0.20
Scampi	555	1.52	28.89	<0.001	0.40	0.23	0.10	11.35	6.48	<0.001	0.27

improvements to the performance of GAMs, as was confirmed by AIC comparison (Table 3), but the final model for scampi passed the evaluation tests while its original full model did not. Further, dissolved oxygen concentration was significant for New Zealand scampi following removal of northings as they were collinear with oxygen (Table 3). Thus, dissolved oxygen concentration was significant for four species within final models. As such, all final GAMs passed the evaluation tests, with the median adjusted R^2 values ranging between 0.104 (orange roughy) and 0.44 (hoki), while median Spearman’s rho values ranged

from 0.29 (arrow squid) to 0.55 (hoki) (Supplementary Fig. 3).

The species differed in their thermal ranges and temperature-size responses, but all showed decreasing maximum length with temperature (Fig. 5). Temperature was generally a more important covariate than dissolved oxygen concentration in explaining maximum length in the final models, while eastings and northings were the most important covariates for all species except for hoki and scampi (Fig. 6). Finally, the predicted maximum lengths across the past fishing period (1979–1998) and those from the

Table 3 Results for the final generalised additive models (GAMs) for snapper, arrow squid, and scampi; final GAMs result from the removal of collinear or non-significant covariates from the full GAMs (given by Eq. 1). Also listed is the Akaike’s information criterion (AIC) for final and full GAMs.

Note that the final GAM for scampi included the smooth effect of eastings instead of an interaction term between eastings and northings, as northings were found to be collinear with dissolved oxygen concentration and were, therefore, removed from the scampi GAM

Species	Temperature			Dissolved oxygen concentration			Interaction between eastings and northings			Adj. R^2	Final model AIC	Full model AIC
	edf	F	p	edf	F	p	edf	F	p			
Snapper	1.12	10.03	<0.001				11.61	17.13	<0.001	0.27	-6228.72	-6228.72
Arrow squid	2.63	19.01	<0.001				14.57	35.52	<0.001	0.20	-8856.58	-8856.53
Scampi	1.53	32.45	<0.001	0.83	1.50	0.01	6.31	7.75	<0.001	0.25	-324.23	-313.04

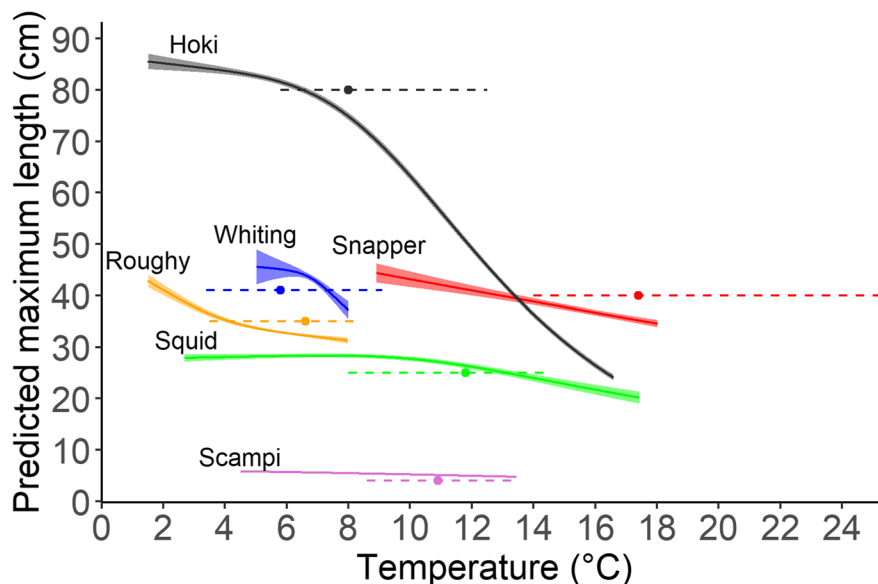


Fig. 5 Maximum lengths predicted by final GAMs (solid line) with 95% confidence interval bands, as a function of temperature (°C) for hoki, snapper, blue whiting, orange roughy, arrow squid, and scampi. The dashed lines of matching colour represent the reported preferred temperature range for each species,

including mean preferred temperature (point), as reported by FishBase (for fishes) (Froese & Pauly 2021; www.fishbase.org) and SeaLifeBase (for invertebrates) (Palomares & Pauly 2021; www.sealifebase.org). This figure was created using R Studio (Team R Development Core 2021)

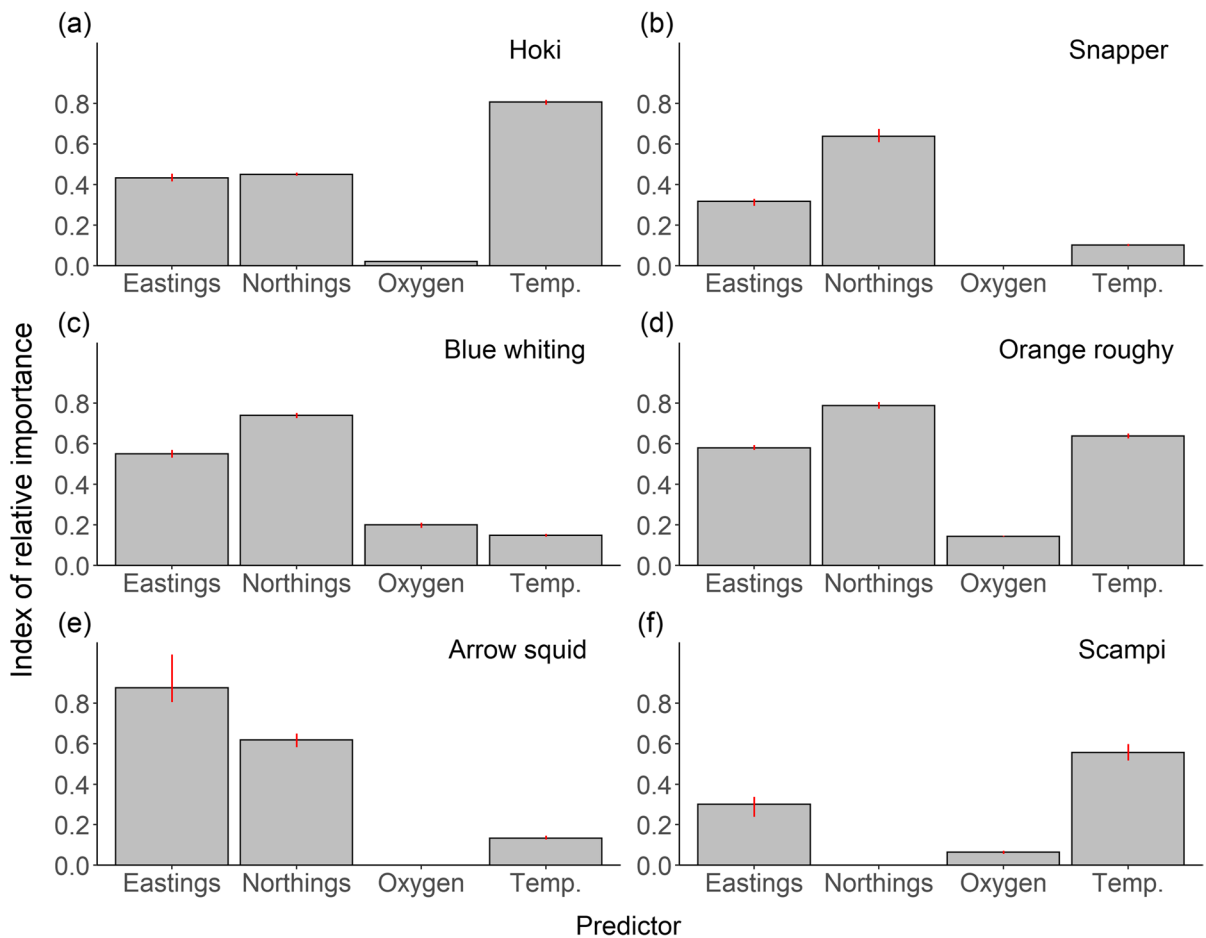


Fig. 6 Estimated relative importance of eastings, northings, dissolved oxygen concentration, and temperature (with 95% confidence intervals), in explaining maximum length predicted by the generalised additive models of **a** hoki, **b** snapper, **c** blue

whiting, **d** orange roughy, **e** arrow squid, and **f** scampi. See the main text for a description of the calculation of indices of relative importance. This figure was created using R Studio (Team R Development Core 2021)

recent period (1999–2021) generally displayed the same relationship between maximum body length and temperature, with hoki the only species predicted to be smaller across the warmer extent of its distribution within the recent time period (Supplementary Fig. 4).

Discussion

We found that the maximum body length of all six study species displayed an inverse relationship with temperature. The largest species, hoki, displayed the strongest temperature-size response, with maximum length predicted to decrease by approximately 72% (from 85.5 cm to 24.1 cm SL) across the sampled

temperature range (Fig. 5). The predicted decrease in maximum body length was similar for the remaining species, ranging between 30% for arrow squid and 18% for blue whiting (Fig. 5). Overall, the strength of the temperature-size response for the study species was likely underestimated, as our data covered only part of the study species' known temperature and dissolved oxygen concentration ranges (Supplementary Table 1; Fig. 5). The two species with the widest observed temperature ranges, hoki and arrow squid, displayed the strongest reductions in maximum body length. Conversely, blue whiting maintained the narrowest observed temperature range, resulting in the smallest predicted reduction in maximum body length (Fig. 5).

Our results support our initial hypothesis that the largest species display the strongest temperature-size response. Despite a similar temperature range extent, hoki's relative reduction in maximum body length was two times stronger than that of arrow squid. Experimental results from Forster et al. (2012) found that the strength of a temperature-size response in water-breathing ectotherms increased with their maximum body lengths. Further, when investigating the temperature-size responses of 74 fish species across the Mediterranean Sea, van Rijn et al. (2017) concluded that active large species were those that displayed the largest reductions in maximum body size with temperature. While species' traits were not considered in the models developed in the present study, hoki is by far the largest of our study species. Species' traits, life histories and geographic variables may influence the strength of temperature-size responses, and, thus, should be considered in future models.

According to the gill-oxygen limitation theory (*GOLT*), marine ectotherms reach an asymptotic body size due to the limitations of gill surface area to body weight ratio, when the two-dimensional respiratory surface (gill) area is unable to provide sufficient oxygen required for the growth and function of three-dimensional bodies (Pauly 2010, 2021; Pauly and Cheung 2018). Therefore, one mechanism under the *GOLT* would see species reduce their maximum body length (i.e., limit growth) with increasing temperatures, in order to increase the gill surface area to body weight ratio and, thus, service temperature-dependent oxygen demands (Pauly and Cheung 2018). Another mechanism, the oxygen- and capacity-limited thermal tolerance (*OCLTT*) concept, states that species have upper thermal limits, whereby an animal's capacity to adequately supply oxygen to maintain performance diminishes as it approaches this limit (Pörtner 2001, 2002). According to the *OCLTT*, an animal's ability to supply oxygen does not scale sufficiently with body size relative to oxygen demand, whilst increasing temperatures and oxygen demand will compound oxygen limitation (Pörtner et al. 2017; Audzijonyte et al. 2019).

While we were unable to mechanistically investigate the variable temperature-size responses between species, our results suggest that large-bodied species' temperature- and size-dependent growth efficiencies were constrained under increasing temperatures (Pörtner 2001; Kozłowski et al. 2004; Pauly 2010;

Verberk et al. 2011; Hoefnagel et al. 2018; Rubalcaba et al. 2020), as the assumed increases in oxygen demand (with temperature) were not met despite dissolved oxygen concentration being above known critical levels for marine organisms (Cook and Herbert 2012; Brennan et al. 2016; Shi et al. 2021).

We found that temperature was a more important covariate than oxygen for five of the six study species, with blue whiting the exception (Fig. 6). Across the study area, dissolved oxygen levels were at or near saturation (Supplementary Fig. 2). Therefore, limitations of available dissolved oxygen were unlikely to drive a temperature-size response in species. This conclusion adheres to the proposed mechanisms including the *GOLT*, and the *OCLTT*, in that relative reductions in maximum size (i.e., limited growth) are likely required in order to meet the oxygen demands brought about by temperature-induced increases in metabolic activity of water-breathing ectotherms (Pörtner and Peck 2010; Pauly 2021). Furthermore, the inclusion of two invertebrate species in the present study allows for further generalisation of temperature-size responses in marine ectotherms, which has been primarily developed with regard to fishes (Pauly 2010, 2021). As crustaceans and cephalopods generally have a higher tolerance of hypoxia (Shi et al. 2021), future research should continue to compare temperature-size responses between taxonomic groups, and the interactive effect of temperature and dissolved oxygen concentration on the metabolic scope of water-breathing ectotherms. As such, it may be that species that are less tolerant of low oxygen levels may experience a stronger temperature-size response with warming, even if dissolved oxygen levels remain at or near saturation.

Unsurprisingly, the most important variable in explaining maximum body length in our models was generally geographic position (eastings and northings), as this represents latent ecological and environmental variables (Wood 2006; Grüss et al. 2016, 2018a, 2021; Bolser et al. 2020; Egerton et al. 2021). These variables could relate to variation in depth, the availability of suitable habitat, ecological competition, prey availability, size selective predation or mortality, and/or fishery effects (Connolly and Roughgarden 1999; Tu et al. 2018; Penn et al. 2018; Deutsch et al. 2020; Kulatska et al. 2021). These factors associated with a species' distribution may influence the temperature-size response. By including the

interaction term between eastings and northings in our models, we were able to compare the importance of temperature and dissolved oxygen concentration in explaining maximum length relative to that of other, unmeasured variables.

It is important to note that all of the species included in the present study are targeted by fisheries in New Zealand waters. The present study uses only survey data, and we did not include fishing pressure in our models. Overall, the maximum body lengths of our study species may have been truncated, as fisheries preferentially target the largest individuals in a population, such that our ability to display the extent of a temperature-size relationship may be confounded by fishing pressure (Cheung et al. 2013; Tu et al. 2018). Yet, the maximum body length ranges for all of our study species approximate adult sizes (Table 1; Fig. 3d). Further, by comparing more recent survey data (1999–2021) to past survey data (1979–1998; Supplementary Fig. 4), we assume that the influence of fishing on removing large individuals from the population no longer influences the maximum length of species across our study area (i.e., beyond previous, higher intensity fishing era). Given that we found few differences in our predicted trends between time periods, we conclude that our results are not severely confounded by fishing effort in our study, but most likely due to the wide environmental and temporal gradient of the study.

In conclusion, our results support the hypothesis that larger-bodied aquatic ectotherms experience the strongest temperature-size responses. They also support expectations from the GOLT and OCLTT theories that increase in oxygen demand may be size- and temperature-dependent. Climate change has already resulted in measurable impacts on marine organisms and ecosystems. This includes the poleward shift in distribution of thousands of species as they track their thermal affinity (Chaudhary et al. 2021), to the increasing number and spatial coverage of marine areas experiencing episodic or chronic hypoxia throughout the last century (Limburg et al. 2020). The observed and projected changes to ocean temperature and dissolved oxygen concentration will likely tax the metabolic demands of water-breathing ectotherms across depths and latitudes (Oschlies 2021), but to varying degrees between species, size-classes or functional groups (Audzijonyte et al. 2020; Rubalcaba et al. 2020). Thus, our results extend the findings of previous studies proposing that larger-bodied

species may experience the most significant temperature-size responses with future ocean warming.

Acknowledgements We would like to thank Arnaud Grüss, Daniel Pauly, Donna Dimarchopoulou, Richard O’Driscoll, and Owen Anderson for their help and/or advice at different stages of the present study, as well as journal editors and reviewers for their constructive comments throughout the review process. We thank Fisheries New Zealand for providing the species’ length data used in this analysis.

Author contribution All authors contributed to the study conception and design. Material preparation, data collection, and analysis were performed by Charles P. Lavin, Cesc Gordó-Vilaseca, and Fabrice Stephenson. The first draft of the manuscript was written by Charles P. Lavin, and all authors commented on previous versions of the manuscript. All authors read and approved the final manuscript.

Funding Open access funding provided by Nord University. CPL, CGV, ZS, and MJC were supported by Nord University. FS was partially funded by National Institute of Water and Atmospheric Research (NIWA), Coasts and Oceans Research Programmes 5 (SCI 2021/22).

Data availability Species’ length data are available upon request to the Ministry for Primary Industries, New Zealand.

Code availability The code used for analysis in the current study is available on GitHub at <https://github.com/charles-patrik-lavin/New-Zealand-maximum-length-EBFI-2022.git>.

Declarations

Ethics approval Not applicable.

Consent to participate Not applicable.

Consent for publication Not applicable.

Conflict of interest The authors declare no competing interests.

Open Access This article is licensed under a Creative Commons Attribution 4.0 International License, which permits use, sharing, adaptation, distribution and reproduction in any medium or format, as long as you give appropriate credit to the original author(s) and the source, provide a link to the Creative Commons licence, and indicate if changes were made. The images or other third party material in this article are included in the article’s Creative Commons licence, unless indicated otherwise in a credit line to the material. If material is not included in the article’s Creative Commons licence and your intended use is not permitted by statutory regulation or exceeds the permitted use, you will need to obtain permission directly from the copyright holder. To view a copy of this licence, visit <http://creativecommons.org/licenses/by/4.0/>.

References

- Assis J, Tyberghein L, Bosch S et al (2018) Bio-ORACLE v2.0: Extending marine data layers for bioclimatic modeling. *Glob Ecol Biogeogr* 27:277–284. <https://doi.org/10.1111/geb.12693>. Accessed 19 March 2021
- Atkinson D (1994) Temperature and organism size—a biological law for ectotherms? In: Begon M, Fitter AHBT-A in ER (eds). Academic Press 1–58
- Atkinson D, Morley SA, Hughes RN (2006) From cells to colonies: at what levels of body organization does the ‘temperature-size rule’ apply? *Evol Dev* 8:202–214. <https://doi.org/10.1111/j.1525-142X.2006.00090.x>
- Audzijonyte A, Barneche DR, Baudron AR et al (2019) Is oxygen limitation in warming waters a valid mechanism to explain decreased body sizes in aquatic ectotherms? *Glob Ecol Biogeogr* 28:64–77. <https://doi.org/10.1111/geb.12847>
- Audzijonyte A, Richards SA, Stuart-Smith RD et al (2020) Fish body sizes change with temperature but not all species shrink with warming. *Nat Ecol Evol* 4:809–814. <https://doi.org/10.1038/s41559-020-1171-0>
- Bindoff NL, Cheung WWL, Kairo JG, et al (2019) Changing ocean, marine ecosystems, and dependent communities. In: IPCC Special Report on the Ocean and Cryosphere in a Changing Climate [H. -O. Pörtner, D. C. Roberts, V. Masson-Delmotte, P. Zhai, M. Tignor, E. Poloczanska, K. Mintenbeck, A. Alegría, M. Nicolai, A. Okem, J. Petzold, B. Rama, N.M. Weyer (eds.)]
- Bolser DG, Egerton JP, Grüss A et al (2020) Environmental and structural drivers of fish distributions among petroleum platforms across the U.S. Gulf of Mexico Mar Coast Fish 12:142–163. <https://doi.org/10.1002/mcf2.10116>
- Breitburg D, Levin LA, Oschlies A et al (2018) Declining oxygen in the global ocean and coastal waters. *Science* 359:eaam7240. <https://doi.org/10.1126/science.aam7240>
- Brennan CE, Blanchard H, Fennel K (2016) Putting temperature and oxygen thresholds of marine animals in context of environmental change: a regional perspective for the Scotian Shelf and Gulf of St. Lawrence. *PLoS One* 11:e0167411
- Chaudhary C, Richardson AJ, Schoeman DS, Costello MJ (2021) Global warming is causing a more pronounced dip in marine species richness around the equator. *Proc Natl Acad Sci* 118:e2015094118. <https://doi.org/10.1073/pnas.2015094118>
- Cheung WWL, Sarmiento JL, Dunne J et al (2013) Shrinking of fishes exacerbates impacts of global ocean changes on marine ecosystems. *Nat Clim Chang* 3:254–258. <https://doi.org/10.1038/Nclimate1691>
- Clarke TM, Wabnitz CCC, Striegel S et al (2021) Aerobic growth index (AGI): An index to understand the impacts of ocean warming and deoxygenation on global marine fisheries resources. *Prog Oceanogr* 195:102588. <https://doi.org/10.1016/j.pocean.2021.102588>
- Cohen DM, Inada T, Iwamoto T, Scialabba N (1990) Food and Agricultural Organization of the United Nations (FAO) species catalogue. Vol. 10. Gadiform fishes of the world (order Gadiformes): an annotated and illustrated catalogue of cods, hakes, grenadiers and other gadiform fishes known to date. FAO Fish Synop 125
- Connolly SR, Roughgarden J (1999) Theory of marine communities: competition, predation, and recruitment-dependent interaction strength. *Ecol Monogr* 69:277–296. [https://doi.org/10.1890/0012-9615\(1999\)069\[0277:TOMCCP\]2.0.CO;2](https://doi.org/10.1890/0012-9615(1999)069[0277:TOMCCP]2.0.CO;2)
- Cook DG, Herbert NA (2012) Low O₂ avoidance is associated with physiological perturbation but not exhaustion in the snapper (*Pagrus auratus*: Sparidae). *Comp Biochem Physiol Part A Mol Integr Physiol* 162:310–316. <https://doi.org/10.1016/j.cbpa.2012.03.024>
- Craig SR, MacKenzie DS, Jones G, Gatlin DM (2000) Seasonal changes in the reproductive condition and body composition of free-ranging red drum, *Sciaenops ocellatus*. *Aquaculture* 190:89–102. [https://doi.org/10.1016/S0044-8486\(00\)00386-0](https://doi.org/10.1016/S0044-8486(00)00386-0)
- Cryer M, Dunn A, Hartill B (2005) Length-based population model for scampi (*Metanephrops challengeri*) in the Bay of Plenty. *Minist Fish New Zealand*
- Daufresne M, Lengfellner K, Sommer U (2009) Global warming benefits the small in aquatic ecosystems. *Proc Natl Acad Sci* 106:12788 LP – 12793. <https://doi.org/10.1073/pnas.0902080106>
- Delignette-Muller ML, Dutang C (2015) fitdistrplus: An R package for fitting distributions. 2015 64:34. <https://doi.org/10.18637/jss.v064.i04>
- Deutsch C, Ferrel A, Seibel B et al (2015) Climate change tightens a metabolic constraint on marine habitats. *Science* 348:1132–1135. <https://doi.org/10.1126/science.aaa1605>
- Deutsch C, Penn JL, Seibel B (2020) Metabolic trait diversity shapes marine biogeography. *Nature* 585:557–562. <https://doi.org/10.1038/s41586-020-2721-y>
- Dormann CF, Elith J, Bacher S et al (2013) Collinearity: a review of methods to deal with it and a simulation study evaluating their performance. *Ecography (cop)* 36:27–46. <https://doi.org/10.1111/j.1600-0587.2012.07348.x>
- Dove D, Weijerman M, Grüss A, et al (2020) Substrate mapping to inform ecosystem science and marine spatial planning around the Main Hawaiian Islands. In: Harris P, Baker E (eds) *Seafloor Geomorphology as Benthic Habitat: GeoHab Atlas of seafloor geomorphic features and benthic habitat*, 2nd edn. London, UK, 619–640
- Egerton JP, Bolser DG, Grüss A, Erisman BE (2021) Understanding patterns of fish backscatter, size and density around petroleum platforms of the U.S. Gulf of Mexico using hydroacoustic data. *Fish Res* 233:105752. <https://doi.org/10.1016/j.fishres.2020.105752>
- Ern R (2019) A mechanistic oxygen- and temperature-limited metabolic niche framework. *Philos Trans R Soc B Biol Sci* 374:20180540. <https://doi.org/10.1098/rstb.2018.0540>
- Ferrell D, Sumpton W (1997) Assessment of the fishery for snapper (*Pagrus auratus*) in Queensland and New South Wales. DPI and NSW FRI
- Forster J, Hirst AG, Woodward G (2011) Growth and Development Rates Have Different Thermal Responses. *Am Nat* 178:668–678. <https://doi.org/10.1086/662174>
- Forster J, Hirst AG, Atkinson D (2012) Warming-induced reductions in body size are greater in aquatic than

- terrestrial species. *Proc Natl Acad Sci* 109:19310 LP – 19314. <https://doi.org/10.1073/pnas.1210460109>
- Francis MP, Hurst RJ, McArdle BH et al (2002) New Zealand demersal fish assemblages. *Environ Biol Fishes* 65:215–234. <https://doi.org/10.1023/A:1020046713411>
- Froese R, Pauly D, (eds) (2021) FishBase. World Wide Web electronic publication. www.fishbase.org, (08/2021). Accessed 20 December 2021
- Gardner JL, Peters A, Kearney MR et al (2011) Declining body size: a third universal response to warming? *Trends Ecol Evol* 26:285–291. <https://doi.org/10.1016/j.tree.2011.03.005>
- Garner DM (1969) The seasonal range of sea temperature on the New Zealand shelf. *New Zeal J Mar Freshw Res* 3:201–208. <https://doi.org/10.1080/00288330.1969.9515289>
- Grüss A, Drexler M, Ainsworth CH (2014) Using delta generalized additive models to produce distribution maps for spatially explicit ecosystem models. *Fish Res* 159:11–24. <https://doi.org/10.1016/j.fishres.2014.05.005>
- Grüss A, Yemane D, Fairweather TP (2016) Exploring the spatial distribution patterns of South African Cape hakes using generalised additive models. *African J Mar Sci* 38:395–409. <https://doi.org/10.2989/1814232X.2016.1218367>
- Grüss A, Chagaris DD, Babcock EA, Tarnecki JH (2018) Assisting ecosystem-based fisheries management efforts using a comprehensive survey database, a large environmental database, and generalized additive models. *Mar Coast Fish* 10:40–70. <https://doi.org/10.1002/mcf2.10002>
- Grüss A, Thorson JT, Babcock EA, Tarnecki JH (2018) Producing distribution maps for informing ecosystem-based fisheries management using a comprehensive survey database and spatio-temporal models. *ICES J Mar Sci* 75:158–177. <https://doi.org/10.1093/icesjms/fsx120>
- Grüss A, Rose KA, Justić D, Wang L (2020) Making the most of available monitoring data: a grid-summarization method to allow for the combined use of monitoring data collected at random and fixed sampling stations. *Fish Res* 229:105623. <https://doi.org/10.1016/j.fishres.2020.105623>
- Grüss A, Pirtle JL, Thorson JT et al (2021) Modeling nearshore fish habitats using Alaska as a regional case study. *Fish Res* 238:105905. <https://doi.org/10.1016/j.fishres.2021.105905>
- Guisan A, Edwards TC, Hastie T (2002) Generalized linear and generalized additive models in studies of species distributions: setting the scene. *Ecol Modell* 157:89–100. [https://doi.org/10.1016/S0304-3800\(02\)00204-1](https://doi.org/10.1016/S0304-3800(02)00204-1)
- Hoefnagel KN, de Vries EHJ (Lisenka), Jongejans E, Verberk WCEP (2018) The temperature-size rule in *Daphnia magna* across different genetic lines and ontogenetic stages: multiple patterns and mechanisms. *Ecol Evol* 8:3828–3841. <https://doi.org/10.1002/ece3.3933>
- Hoefnagel KN, Verberk WCEP (2015) Is the temperature-size rule mediated by oxygen in aquatic ectotherms? *J Therm Biol* 54:56–65. <https://doi.org/10.1016/j.jtherbio.2014.12.003>
- Horne CR, Hirst AG, Atkinson D (2015) Temperature-size responses match latitudinal-size clines in arthropods, revealing critical differences between aquatic and terrestrial species. *Ecol Lett* 18:327–335. <https://doi.org/10.1111/ele.12413>
- Horton T, Kroh A, Ah Yong S, et al (2021) World Register of Marine Species (WoRMS). Available from <https://www.marinespecies.org> at VLIZ. Accessed 19 March 2021. doi:<https://doi.org/10.14284/170>
- ICES Unit Conversion. In: *Int. Coun. Explor. Sea*. <https://ocean.ices.dk/tools/UnitConversion.aspx>
- Jackson GD, Shaw AGP, Lallas C (2000) Distribution and biomass of two squid species off southern New Zealand: *Nototodarus sloanii* and *Moroteuthis ingens*. *Polar Biol* 23:699–705. <https://doi.org/10.1007/s0030000000141>
- Jisr N, Younes G, Sukhn C, El-Dakdouki MH (2018) Length-weight relationships and relative condition factor of fish inhabiting the marine area of the Eastern Mediterranean city, Tripoli-Lebanon. *Egypt J Aquat Res* 44:299–305. <https://doi.org/10.1016/j.ejar.2018.11.004>
- Kloser RJ, Ryan TE, Macaulay GJ, Lewis ME (2011) In situ measurements of target strength with optical and model verification: a case study for blue grenadier, *Macruronus novaezelandiae*. *ICES J Mar Sci* 68:1986–1995. <https://doi.org/10.1093/icesjms/fsr127>
- Kozłowski J, Czarnołęski M, Dańko M (2004) Can optimal resource allocation models explain why ectotherms grow larger in cold? *Integr Comp Biol* 44:480–493. <https://doi.org/10.1093/icb/44.6.480>
- Kramer DL (1987) Dissolved oxygen and fish behavior. *Environ Biol Fishes* 18:81–92. <https://doi.org/10.1007/BF00002597>
- Kuhn M, Johnson K (2013) Applied predictive modeling. In: New York: Springer. 247–273
- Kulatska N, Woods PJ, Elvarsson BP, Bartolino V (2021) Size-selective competition between cod and pelagic fisheries for prey. *ICES J Mar Sci* <https://doi.org/10.1093/icesjms/fsab094>
- Laufkötter C, Zscheischler J, Frölicher TL (2020) High-impact marine heatwaves attributable to human-induced global warming. *Science* 369:1621–1625. <https://doi.org/10.1126/science.aba0690>
- Leathwick JR, Elith J, Francis MP, Hastie T (2006) Variation in demersal fish species richness in the oceans surrounding New Zealand: an analysis using boosted regression trees. *Mar Ecol Prog Ser* 321:267–281
- Leathwick JR, Elith J, Hastie T (2006) Comparative performance of generalized additive models and multivariate adaptive regression splines for statistical modelling of species distributions. *Ecol Modell* 199:188–196. <https://doi.org/10.1016/j.ecolmodel.2006.05.022>
- Lefevre S, McKenzie DJ, Nilsson GE (2017) Models projecting the fate of fish populations under climate change need to be based on valid physiological mechanisms. *Glob Chang Biol* 23:3449–3459. <https://doi.org/10.1111/gcb.13652>
- Legendre P, Legendre L (1998) *Numerical Ecology*, 2nd edn. Elsevier Science, Amsterdam, Netherlands
- Limburg KE, Breitburg D, Swaney DP, Jacinto G (2020) Ocean deoxygenation: a primer. *One. Earth* 2:24–29. <https://doi.org/10.1016/j.oneear.2020.01.001>
- Mannocci L, Roberts JJ, Miller DL, Halpin PN (2017) Extrapolating cetacean densities to quantitatively assess human impacts on populations in the high seas. *Conserv Biol* 31:601–614. <https://doi.org/10.1111/cobi.12856>

- Marra G, Wood SN (2011) Practical variable selection for generalized additive models. *Comput Stat Data Anal* 55:2372–2387. <https://doi.org/10.1016/j.csda.2011.02.004>
- Mello LGS, Rose GA (2005) Seasonal cycles in weight and condition in Atlantic cod (*Gadus morhua* L.) in relation to fisheries. *ICES J Mar Sci* 62:1006–1015. <https://doi.org/10.1016/j.icesjms.2005.03.008>
- Niklitschek EJ, Secor DH, Toledo P et al (2010) Segregation of SE Pacific and SW Atlantic southern blue whiting stocks: integrating evidence from complementary otolith microchemistry and parasite assemblage approaches. *Environ Biol Fishes* 89:399–413. <https://doi.org/10.1007/s10641-010-9695-9>
- NIWA (2014) New Zealand fish and squid distributions from research bottom trawls. Southwestern Pacific OBIS, National Institute of Water and Atmospheric Research (NIWA), Wellington, New Zealand, Online <http://nzobis.sipt.niwa.co.nz/resource.do?r=obisprovider>.
- Oschlies A (2021) A committed fourfold increase in ocean oxygen loss. *Nat Commun* 12:2307. <https://doi.org/10.1038/s41467-021-22584-4>
- Palomares MLD, Pauly D, (eds) (2021) SeaLifeBase. World Wide Web electronic publication. www.sealifebase.org, (12/2021). Accessed 20 December 2021
- Papa Y, Oosting T, Valenza-Troubat N et al (2021) Genetic stock structure of New Zealand fish and the use of genomics in fisheries management: an overview and outlook. *New Zeal J Zool* 48:1–31. <https://doi.org/10.1080/03014223.2020.1788612>
- Pauly D (2010) Gasping fish and panting squids: Oxygen, temperature and the growth of water-breathing animals. International Ecology Institute, Oldendorf/Luhe, Germany
- Pauly D (2021) The gill-oxygen limitation theory (GOLT) and its critics. *Sci Adv* 7:eabc6050. <https://doi.org/10.1126/sciadv.abc6050>
- Pauly D, Cheung WWL (2018) Sound physiological knowledge and principles in modeling shrinking of fishes under climate change. *Glob Chang Biol* 24:e15–e26. <https://doi.org/10.1111/gcb.13831>
- Penn JL, Deutsch CA, Payne JL, Sperling EA (2018) Temperature-dependent hypoxia explains biogeography and severity of end-Permian marine mass extinction. *Science* 362:eaat1327. <https://doi.org/10.1126/science.aat1327>
- Poloczanska ES, Burrows MT, Brown CJ, et al (2016) Responses of marine organisms to climate change across oceans. *Front Mar Sci* 3 <https://doi.org/10.3389/fmars.2016.00062>
- Pörtner H (2001) Climate change and temperature-dependent biogeography: oxygen limitation of thermal tolerance in animals. *Naturwissenschaften* 88:137–146. <https://doi.org/10.1007/s001140100216>
- Pörtner HO (2002) Climate variations and the physiological basis of temperature dependent biogeography: systemic to molecular hierarchy of thermal tolerance in animals. *Comp Biochem Physiol Part A Mol Integr Physiol* 132:739–761. [https://doi.org/10.1016/S1095-6433\(02\)00045-4](https://doi.org/10.1016/S1095-6433(02)00045-4)
- Pörtner HO, Knust R (2007) Climate change affects marine fishes through the oxygen limitation of thermal tolerance. *Science* 315:95–97. <https://doi.org/10.1126/science.1135471>
- Pörtner HO, Peck MA (2010) Climate change effects on fishes and fisheries: towards a cause-and-effect understanding. *J Fish Biol* 77:1745–1779. <https://doi.org/10.1111/j.1095-8649.2010.02783.x>
- Pörtner H-O, Bock C, Mark FC (2017) Oxygen- and capacity-limited thermal tolerance: bridging ecology and physiology. *J Exp Biol* 220:2685–2696. <https://doi.org/10.1242/jeb.134585>
- QGIS.org (2022) QGIS Geographic Information System. QGIS Association. <http://www.qgis.org>
- Randall JE, Allen GR, Steene RC (1998) Fishes of the Great Barrier Reef and Coral Sea. University of Hawaii Press
- Roper CFE, Sweeney MJ, Nauen C, FIR (1984) FAO Species Catalogue, Vol. 3. Cephalopods of the World. An Annotated and Illustrated Catalogue of Species of Interest to Fisheries. XF2006244397 3:
- Rubalcaba JG, Verberk WCEP, Hendriks AJ et al (2020) Oxygen limitation may affect the temperature and size dependence of metabolism in aquatic ectotherms. *Proc Natl Acad Sci* 117:31963. <https://doi.org/10.1073/pnas.2003292117>
- Rypel AL (2014) The cold-water connection: Bergmann's rule in North American freshwater fishes. *Am Nat* 183:147–156. <https://doi.org/10.1086/674094>
- Schmidtko S, Stramma L, Visbeck M (2017) Decline in global oceanic oxygen content during the past five decades. *Nature* 542:335–339. <https://doi.org/10.1038/nature21399>
- Shi Z, Assis J, Costello MJ (2021) Vulnerability of marine species to low oxygen under climate change. *Ref Modul Earth Syst Environ Sci* <https://doi.org/10.1016/B978-0-12-821139-7.00203-8>
- Smith PJ (1999) Allozyme variation in scampi (*Metanephrops chelengeri*) fisheries around New Zealand. *New Zeal J Mar Freshw Res* 33:491–497. <https://doi.org/10.1080/00288330.1999.9516894>
- Stephenson F, Leathwick JR, Geange SW et al (2018) Using Gradient Forests to summarize patterns in species turnover across large spatial scales and inform conservation planning. *Divers Distrib* 24:1641–1656. <https://doi.org/10.1111/ddi.12787>
- SWPRON (2017) Catch data from New Zealand research trawls. Southwestern Pacific OBIS, National Institute of Water and Atmospheric Research (NIWA), Wellington, New Zealand, <http://nzobis.sipt.niwa.co.nz/resource.do?r=trawl>. <https://doi.org/10.15468/gzpcyl>.
- Team R Development Core (2021) A language and environment for statistical computing. *R Found Stat Comput* 2:<https://www.R-project.org>
- Thomsen B (1998) Faroese quest of orange roughy in the North Atlantic. *ICES C* 31
- Thuiller W, Lafourcade B, Araujo M (2012) The presentation manual for BIOMOD. Université Joseph Fournier, Grenoble, France, Laboratoire d'écologie alpine
- Tu C-Y, Chen K-T, Hsieh C (2018) Fishing and temperature effects on the size structure of exploited fish stocks. *Sci Rep* 8:7132. <https://doi.org/10.1038/s41598-018-25403-x>
- van Rijn I, Buba Y, DeLong J et al (2017) Large but uneven reduction in fish size across species in relation to changing sea temperatures. *Glob Chang Biol* 23:3667–3674. <https://doi.org/10.1111/gcb.13688>
- Verberk WCEP, Bilton DT, Calosi P, Spicer JI (2011) Oxygen supply in aquatic ectotherms: partial pressure and

- solubility together explain biodiversity and size patterns. *Ecology* 92:1565–1572. <https://doi.org/10.1890/10-2369.1>
- Verberk WCEP, Atkinson D, Hoefnagel KN et al (2021) Shrinking body sizes in response to warming: explanations for the temperature–size rule with special emphasis on the role of oxygen. *Biol Rev* 96:247–268. <https://doi.org/10.1111/brv.12653>
- Weber MJ, Brown ML, Wahl DH, Shoup DE (2015) Metabolic theory explains latitudinal variation in common carp populations and predicts responses to climate change. *Ecosphere* 6:art54. <https://doi.org/10.1890/ES14-00435.1>
- Weijerman M, Grüss A, Dove D et al (2019) Shining a light on the composition and distribution patterns of mesophotic and subphotic fish communities in Hawaii. *Mar Ecol Prog Ser* 630:161–182
- Wood SN (2006) *Generalized additive models: an introduction* with R. Chapman & Hall/CRC, Boca Raton, FL
- Worm B, Hilborn R, Baum JK et al (2009) Rebuilding global fisheries. *Science* 325:578–585. <https://doi.org/10.1126/science.1173146>
- Yaldwyn J, Webber W (2011) Annotated checklist of New Zealand Decapoda. Crustacea, Arthropoda
- Zuur AF, Ieno EN, Elphick CS (2010) A protocol for data exploration to avoid common statistical problems. *Methods Ecol Evol* 1:3–14. <https://doi.org/10.1111/j.2041-210X.2009.00001.x>

Publisher's note Springer Nature remains neutral with regard to jurisdictional claims in published maps and institutional affiliations.