



Synergistic Effect of Cypermethrin and Sodium Fluoride on Kidney Histopathology of Albino Mice

P. Ravi Sekhar^{1*}, Y. Savithri², Kanchi Siva Prasad³, S Smitha⁴, T. Sreedhar Murthy⁵

^{1,2}Assistant Professor, Department of Zoology, Govt. College for Men (Autonomous), Kadapa, A.P, INDIA.

³Assistant Professor of Zoology, SKR Govt. Degree College, GUDUR, TIRUPATI DT.

⁴ Principal, STSN. Govt. Degree College, Kadiri, Sathya Sai District, AP, INDIA

⁵Lecturer in Botany, Government Degree college, Porumamilla, Kadapa District, A.P. India.

*Corresponding author's E-mail: pesala1980@gamil.com

Article History	Abstract
Received: 06 June 2023 Revised: 05 Sept 2023 Accepted: 06 Nov 2023	<p>The aim of the present study is to understand the renal toxicity, induced by cypermethrin and sodium fluoride (NaF) separately and combined in albino mice. Albino mice were treated with cypermethrin and sodium fluoride (NaF), separately and in combination, with 1/10th of the LD₅₀ dosage of cypermethrin and NaF for individual administration by oral gavage (i.e., 8.5 mg/kg bw and 5.6 mg/kg bw, respectively) and 1/20th of the LD₅₀ dose of cypermethrin and NaF for combined administration (i.e., 4.25 mg/kg bw and 2.8 mg/kg bw, respectively). Separate or combined treatment resulted in histopathological changes in the kidney tissue such as degenerative changes in Bowman's capsule (DGBC), distal convoluted tubules (DGDCT), necrotic changes in glomerulus (NCG), atrophied glomerulus (ATG), necrotic change in distal convoluted tubules (NCDCT), necrotic change in Bowman's capsule (NCBC) and necrosis in proximal convoluted tubules (NCPCT), severe necrotic changes in proximal convoluted tubules (SNCPCT) and distal convoluted tubules (SNCDCCT) were observed. The changes were more in combination than individual treatment, this may be because of a synergistic effect of cypermethrin and NaF.</p> <p>Keywords: Synergism, Cypermethrin, Sodium fluoride, Kidney, Albino mice</p>
CC License CC-BY-NC-SA 4.0	

1. Introduction

Water is known as a natural solvent. Before it reaches the consumer's tap, it comes into contact with many different substances, including organic and inorganic matter, chemicals, and other contaminants. Estimates suggest that nearly 1.5 billion people lack safe drinking water and that at least 5 million deaths per year can be attributed to waterborne diseases. Water dissolves numerous substances in large amounts, pure water rarely occurs in nature. Today, people are concerned about the quality of the water they drink. Pesticides are one of the most common causes of water pollution. Pesticides from farms and individual home owners run off into streams and rivers.

Fluoride is an essential trace element for human beings and animals. In small amounts fluoride is beneficial as it is believed to impart stability to bone and enamel, thereby preventing dental caries and osteoporosis to some extent but its higher concentration is highly toxic to humans and animals alike. As fluoride is found in small quantities in almost all foods, it enters the human body mainly through the oral route along with food and water. It can be rapidly absorbed by passive diffusion through stomach, small intestine, mouth, lungs and skin (Khandare *et al.*, 2001). Chronic exposure to fluoride above the permissible limits, it causes a disease called "Fluorosis". Fluorosis is an important clinical and public health problem in several parts of the world. Exposure higher than permissible levels of fluoride (>1.5 mg/L) may lead to serious health problems (WHO, 2017). Vital organs such as liver, kidney, reproductive organs and endocrine glands are to be adversely affected by high fluoride intake (Chinoy, 1991; ATSDR 2001). Some metabolic activities are also disturbed due to alteration in regulatory enzymes and biomolecules after exposure to fluoride (Kumar *et al.*, 2007). Fluoride was shown, cumulative toxic effects on various organs, including the kidneys (Abdo *et al.* 2011). Kidney is a common target organ for toxic xenobiotics due to its capacity to extract and also, due to its large blood flow (Choi *et al.*, 2011 and Azab *et al.* 2014). In areas where water with high fluoride content is used to

prepare tea, So, the consumption of tea is a major risk factor for kidney disease due to its high fluoride content (Pehrsson et al., 2011 and Waugh et al., 2016).

Microtomy is the technique of using the microtome or of preparing with its aid objects for microscopic study. Histopathology is the microscopic study of unhealthy tissue and is an important device of structural pathology. The knowledge of the histology is useful to distinguish normal cells from abnormal or diseased ones, which helps in diagnosis of many diseases (Majumdar, 1980). Even though biochemical studies may give an idea of the extreme state of the animal, a clear picture of cytoarchitectural variations produced during the chemical intoxication can be produced during the chemical intoxication can be drawn by histopathological studies.

Several workers reported on the pesticides and fluoride toxicity separately, the present study was designed to investigate the synergistic effects of cypermethrin and sodium fluoride (NaF) on hepatic histological architecture in albino mice.

2. Materials And Methods

Experimental design:

The albino mice were divided into seven groups with ten animals in each group. The toxicity of cypermethrin and NaF in mice was evaluated by the static bioassay method of Finney (1971), and the single-dosage of LD₅₀ of cypermethrin and NaF to albino mice was found to be 85 mg/kg bw/24 hr and 56 mg/kg bw/24 hr, respectively. A 1/10th single-dosage LD₅₀ level of cypermethrin and NaF (i.e., 8.5 mg/kg bw and 5.6 mg/kg bw, respectively) for individual administration and 1/20th the single-dosage LD₅₀ level for combined administration were selected. The treatments were by oral gavage and the first group of mice was treated as controls, as shown below in the experimental protocol in Table 1.

Table 1. Experimental protocol

Group	Treatment	Duration (days)	Day of sacrifice
I	Controls	-	-
II	Treated with cypermethrin (8.5 mg/kg bw)	15	16
III	Treated with cypermethrin (8.5 mg/kg bw)	30	31
IV	Treated with NaF (5.6 mg/kg bw)	15	16
V	Treated with NaF (5.6 mg/kg bw)	30	31
VI	Treated with cypermethrin + NaF (4.25 mg/kg bw + 2.8 mg/kg bw)	15	16
VII	Treated with cypermethrin + NaF (4.25 mg/kg bw + 2.8 mg/kg bw)	30	31

The second and third groups were treated for 15 and 30 days with cypermethrin, respectively, at 48-hr intervals. The fourth and fifth groups were treated with NaF for 15 and 30 days at 48-hr intervals. The sixth and seventh groups were treated with combined dose of cypermethrin and NaF for 15 and 30 days at 48-hr intervals.

Histopathological examination: Following the method of Humason histological examination of the tissues was conducted after removal from the mice. The kidney tissues were gently rinsed with a physiological saline solution (0.9% NaCl) to remove blood and adhering debris. They were then fixed in 5% formalin for 24 hr, and the fixative was removed by washing overnight with running tap water. After dehydration through a graded series of alcohols, the tissues were cleared in methyl benzoate and embedded in paraffin. Sections were cut by a microtome to a thickness of 6 µm and stained with hematoxylin as described by Harris et al 2006. and counter-stained with eosin dissolved in 95% ethanol (H&E). After dehydration and clearing, sections were mounted with DPX (digital picture exchange) and observed under a microscope.

3. Results and Discussion

Normal structure of mice kidney

The kidney of albino mice is made up of more basic units, the nephrons. Each nephron consists of two major parts, the glomerulus and tubules. The intertubular spaces are filled by evenly distributed haemopoietic tissue. The cells are parenchymatous in nature, round to polygonal in shape with distinct nuclei in the centre. The tubules are divided into proximal convoluted tubules and distal convoluted tubules (Figs. A & B).

Mice kidney under experimental condition

Mice kidney under experimental condition has shown pronounced cyto architectural changes. These changes include degenerative changes in glomerulus, distal convoluted tubules, and bowman's capsule besides necrotic changes in glomerulus, tubular region, increase of lumen of distal convoluted tubules, congestion, appearance of vacuoles, necrosis in glomeruli and bowman's capsule, atrophy of glomerulus (Figs. M - Q). These changes more in 30 days compared to 15 days. The combination of cypermethrin and sodium fluoride has induced severe architectural changes compared to the mice received the above chemicals individually.

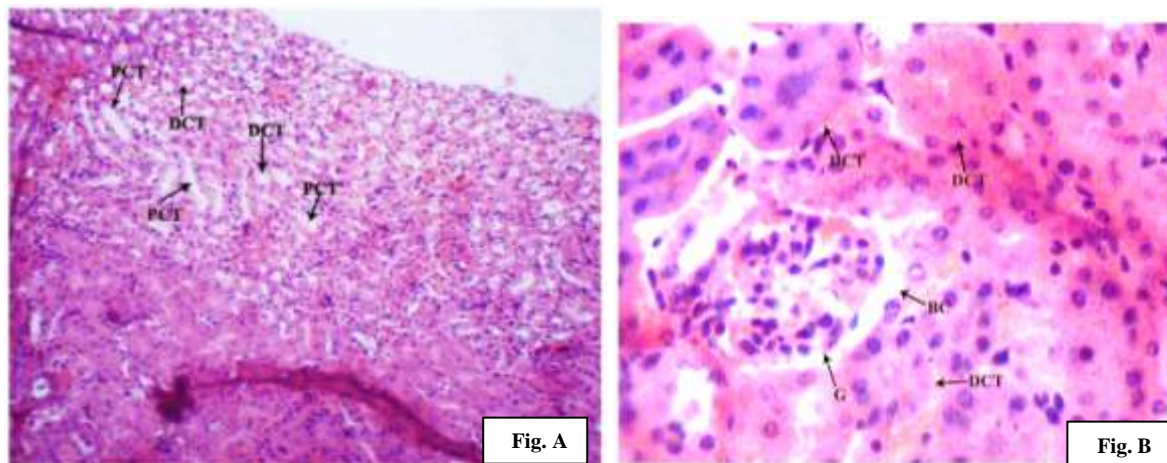


Fig. A: Microphotograph of control mouse kidney showing proximal convoluted tubules (PCT) and distal convoluted tubules (DCT) – H&E.100 X

Fig. B: Microphotograph of control mouse kidney showing distal convoluted tubules (DCT), proximal convoluted tubules (PCT), glomerulus (G), bowman's capsule (BC) – H&E. 400 X

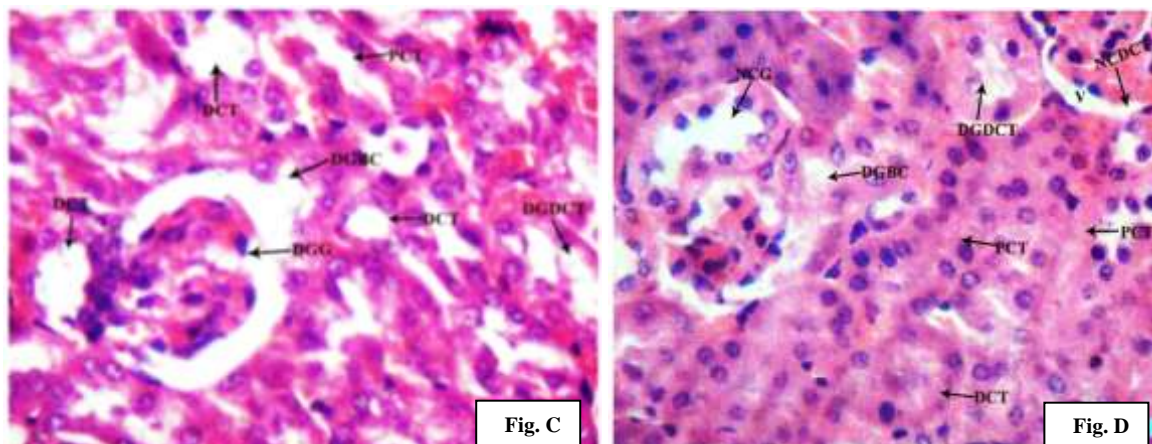


Fig. C: Microphotograph of mouse kidney under 15 days cypermethrin showing degenerative changes in distal convoluted tubules (DGDCT), degeneration in glomerulus (DGG) and degeneration in bowman's capsule (DGBC) – H&E. 400X

Fig. D: Microphotograph of mouse kidney under 30 days of cypermethrin showing necrotic changes in glomerulus (NCG), degeneration in bowman's capsule (DGBC), and degenerative changes in distal convoluted tubules (DG DCT) – H&E. 400 X

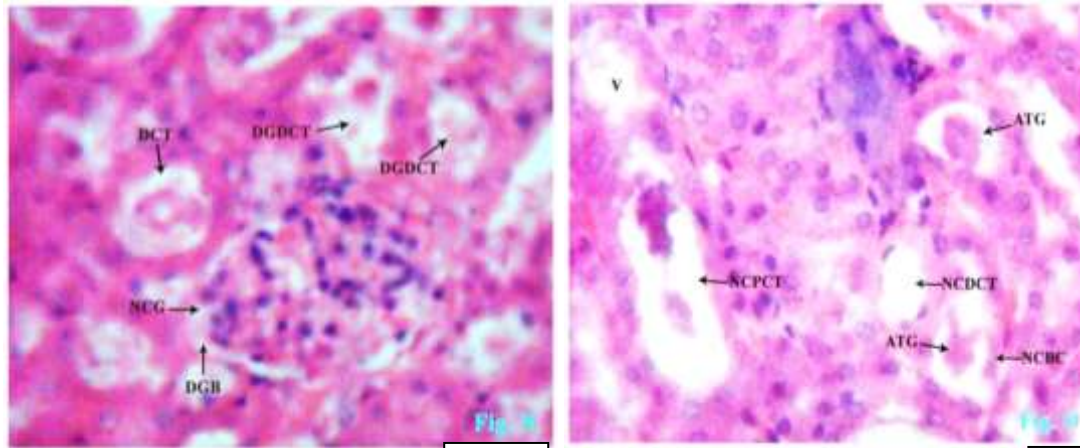


Fig. E: Microphotograph of mouse kidney under 15 days of sodium fluoride showing degenerative changes in distal convoluted tubules (DGDCT) and degeneration in Bowman's capsule (DGB) – H&E. 400 X

Fig. F: Microphotograph of mouse kidney under 30 days of sodium fluoride showing atrophied glomerulus (ATG), necrotic change in distal convoluted tubules (NCDCT), necrotic change in Bowman's capsule (NCBC) and necrosis in proximal convoluted tubules (NCPCT) – H&E. 400 X

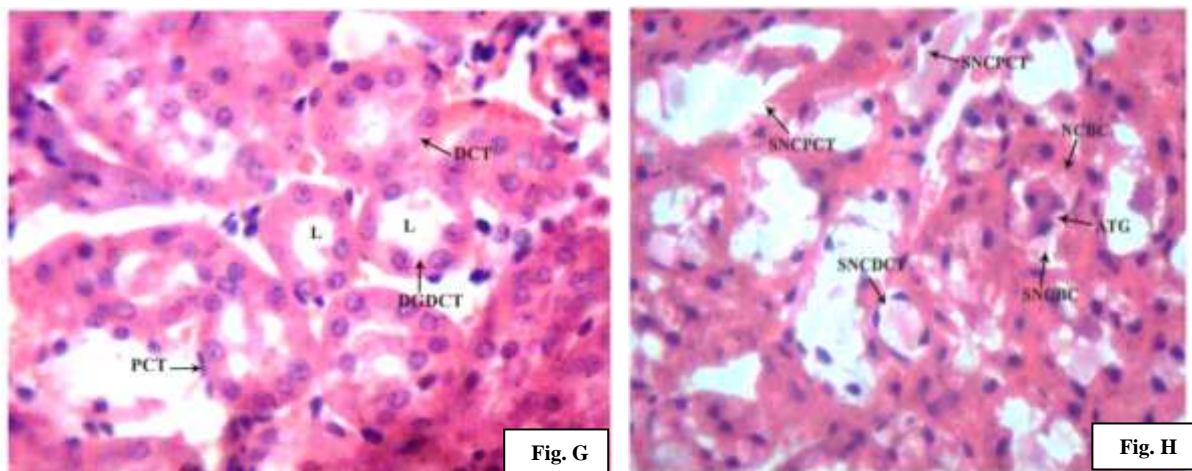


Fig. G: Microphotograph of mouse kidney under 15 days of cypermethrin and sodium fluoride showing increased area of lumen (L) of distal convoluted tubules, and degenerative changes in distal convoluted tubules (DGDCT) besides degeneration in tubular region – H&E. 400 X

Fig. H: Microphotograph of mouse kidney under 30 days of cypermethrin and sodium showing severe necrotic changes in proximal convoluted tubules (SNCPCT) and distal convoluted tubules (SNCDCT), atrophy of glomerulus (ATG) and necrosis in Bowman's capsule (NCBC) – H&E. 400 X

Some toxic substances do not cause damage at the portal of entry but affect the organs systematically in which they are accumulated. Since Kidney happens to be an organ for excretion of undetoxified chemical, it is also affected badly in the present investigation showed some remarkable changes in the experimental condition which includes degenerative change in proximal convoluted tubules and distal convoluted tubules, congestion, necrosis in glomeruli and Bowman's capsule, separation of glomeruli from Bowman's capsule and atrophy of glomeruli (Figs. C - H).

Several authors reported histopathological changes in kidney in different animal models under pesticidal and fluoride toxicity.

Fenvalerate induced renal damage of the epithelial lining of the renal tubule, rupture of the distal tubules and enlargement of the glomeruli with hydropic degeneration (Abdeen et al. 1994). Luty et al. (1998) observed lymphocytic infiltrations of the paraglomerular region and in the outlet part of the kidney rats exposed to dichlorvos. Latuszynska et al. (1999) observed a few infiltrations of mononuclear cells between the proximal tubules or around blood vessels in the kidney of rats bare to chlorpyrifos and cypermethrin.

Atrophy of the glomerule, hypertrophy of Bowman's capsule and hyaline deposits in renal tubuli in the kidney of rats bare to deltamethrin (Tos-Luty et al., 2001). Parenchymatous degeneration of the cells of renal tubules and hyperemia of the cortical part of the kidney, especially of renal glomeruli, as well as

infiltrations between the proximal tubules in the kidney of rats orally exposed to malathion (Tos-Luty et al., 2003). Choudhary et al. (2003) reported chronic glomerulonephritis, glomerulosclerosis, adenoma and glomerulus deposits in kidney tissues of rats bare to endosulfan. Manna et al. (2005) reported congestion of blood vessels in kidneys of rats bare to deltamethrin. Necrosis of tubular epithelium, pycnotic nuclei in the hematopoietic tissue, hypertrophied epithelial cells of renal tubules, narrowing of the tubular lumen, expansion of space inside the Bowman's capsule and contraction of the glomerulus were observed in kidney tissues of *Cirrhinus mrigala* after exposure to fenvalerate (Velmurugan et al., 2007).

Severe alterations in the kidney architectures were observed in Swiss albino mice treated with NaF (Chattopadhyay et al., 2011). Basha, and Rao, (2014) reported that exposure of albino mice to NaF results in necrosis in glomerules, Convolutated tubules and Bowman's capsule lumen in the kidney. Chronic fluoride introduction effects the kidney histological structure in young pigs (Xiu-An Zhan et al., 2006).

4. Conclusion

The present study was designed to investigate the combined toxicity of cypermethrin and sodium fluoride in mice. Several independent studies on pesticide and fluoride toxicity have been conducted in different researchers. However, few attempts have been reported to determine the combined toxic effects of pesticides and fluoride. Combined toxicity by cypermethrin and fluoride through drinking water appears to be an exceptional condition and is able to cause more severe toxic effects than either one alone. Moreover, in Combination the effects were more severe than from separate exposure, thus indicating that these chemicals exhibited synergistic effect.

References:

- Abdeen, A.M., Amer, T.A.M., El-Habibi, M., El-Sayed, M and M. Kamel, 1994. Histological and histochemical studies on the effect of fenvalerate insecticide on some organs of albino mice. *Journal of Union Arab Biol.*, 2:129-166.
- Abdo, Fadia K.; Khalifa, Mohammed E.; Zidan, Rania A.; Abdel Aal, Sara M. 2011. Effect of sodium fluoride-induced toxicity on the renal cortex of lactating mice and their offspring a light and electron microscopic study. *The Egyptian Journal of Histology* 34(3):p 554-565.
- Apoptotic and Necrotic Signal Transductions. *Oncogene*, 12, 2045-2050.
- ATSDR (Agency for Toxic Substances and Disease Registry), 2001. Toxicological profile for fluoride. US Department of Health and Human Service, Atlanta, Georgia.
- Chinoy, N.J. Sequeira, E and M.V. Narayana, 1991. Effects of Vitamin C and calcium on the reversibility of fluoride-induced alterations in spermatozoa of rabbits. *Fluoride*, 24: 24-39.
- Choi, J.J., Moffett, B.S., McDade and Palazzo, D.L., 2011.
- Choudhary, N., Sharma, M., Verma, P and S.C. Joshi, 2003. Heptao and nephrotoxicity in rat exposed to endosulfan. *Journal of Environmental Biology*, 24(3):305-308.
- Finney, D.J, 1971. Probit analysis, III Edition, Cambridge Univ. press, London, p.20.
- Harris KM, Perry E, Bourne J, Feinberg M, Ostroff L and Hurlburt J, 2006. Uniform serial sectioning for transmission electron microscopy. *J Neurosci*, 26, 12101–12103.
- Khandare, A.L., Kumar, P.U. and N. Lakshmaiah, 2001. Fluoride toxicity–Dietary intervention. National Institute of Nutrition, Hyderabad, 22 (1).
- Kumar, A., Tripathi, N. and Tripathi, M., 2007. Fluoride induced biochemical changes in freshwater catfish (*Clarias batrachus*, Linn.). *Fluoride*, 40(1): 37–41
- Latuszynska, J., Luty, S., Halliop, J., Przylepa, E., Tochman, A., Obuchowska, D. and E. Korczak, 1999. Studies of toxicity of dermally-absorbed nurelled D 550 EC preparatios. *Ann Agric Environ Medicine*, 6:151-159.
- Luty, S., Latuszynska, J., Halliop, J., Tochman, A., Obuchowska, D., Przylepa, E., Korczak, E. and E. Bychawski, 1998. Toxicity of dermally absorbed dichlorvos in rats. *Ann Agric Environ Medicine*, 5:57-64.
- Majumder, N.N, 1980. In: *A Text Book of Histology*, I edition, Vikas Pub. House Pvt. Ltd., U.P., India, 252-253.
- Manna, S. Bhattacharyya, D. Mandal, T.K. and S. Das, 2005. Repeated dose toxicity of deltamethrin in rats. *Indian Journal of Pharmacology*; 37(3):160-164.
- Tos-Luty, S., Przebirowska, D., Latuszynska, J and M. Tokarska-Rodak, 2001. Histological and ultrastructural studies of rats exposed to carbaryl. *Ann Agric Environ Medicine*, 8:137-144.
- Tos-Luty, S., Przebirowska, D., Latuszynska, J and M. Tokarska-Rodak and A. Haratym-Maj, 2003. Dermal and oral toxicity of malathion in rats. *Ann Agric Environ Medicine*, 10:101-106.
- Velmurugan, B.M., Selvanayagam E.I., Cengiz and E. Unlu, 2007. The effects of fenvalerate on different tissues of freshwater fish *Cirrhinus mrigala*. *Journal of Environmental Science and Health Part B*, 42:157-163.
- WHO, 2017. Guidelines for Drinking-Water Quality: Fourth Edition Incorporating the First Addendum, Xiu-An Zhan, Min Wang, Zi-Rong Xu, Jian-Xin Li, Hangzhou, 2006., *Fluoride* 39(1)22–26.