

University of Mississippi

eGrove

ORSP Newsletter

Research and Sponsored Programs, Office of

10-30-2023

10.30.2023

Liz Williamson

University of Mississippi Main Campus, research@olemiss.edu

Follow this and additional works at: https://egrove.olemiss.edu/orsp_newsletter



Part of the Arts and Humanities Commons, Education Commons, Engineering Commons, Life Sciences Commons, Medicine and Health Sciences Commons, Physical Sciences and Mathematics Commons, and the Social and Behavioral Sciences Commons

Recommended Citation

Williamson, Liz, "10.30.2023" (2023). *ORSP Newsletter*. 7.

https://egrove.olemiss.edu/orsp_newsletter/7

This Book is brought to you for free and open access by the Research and Sponsored Programs, Office of at eGrove. It has been accepted for inclusion in ORSP Newsletter by an authorized administrator of eGrove. For more information, please contact egrove@olemiss.edu.

THE ORSP **CONNECT**

Research Administration Updates

*Version updated 10/31/2023 to repair broken link

In the
QUEUE

Advancing Data Science and AI Applications in Research

Save the date!

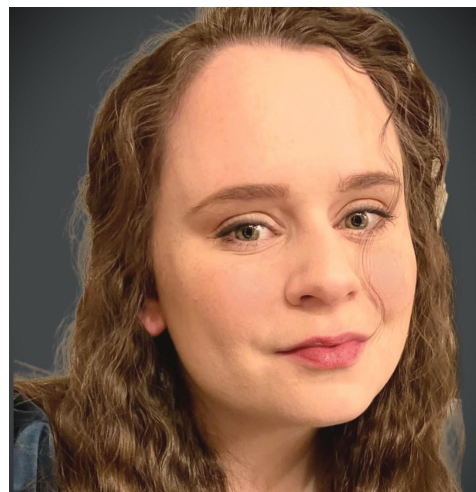
The Institute for Data Science (IDS) is planning an event for November 14, 2023. This event will take place throughout the day, featuring a diverse range of presentations and workshop sessions from UM faculty, students, and industry leaders aimed at advancing data science and Artificial Intelligence (AI) applications to research problems.

Representatives from Microsoft will be joining us on this day to present cutting-edge data science and AI tools in the Microsoft Cloud ecosystem. Students and Faculty from the University of Mississippi will share their insights and research experiences around pure and applied AI. The day will be concluded with a social event to welcome the new Director for the Institute for Data Science and network with fellow attendees.

Stay tuned for more details about this exciting event. For more information, contact Lori Nichols at the Institute for Data Science (ids@olemiss.edu).

Meet
ORSP

Brittney Casey is a Research Compliance Specialist II for the division of Research Integrity, Security, and Compliance (RISC). She works with the Institutional Animal Care and Use



[Subscribe](#) to our email list.

Committee (IACUC). Read more about Brittney and her position at UM!

Brittney Gordon Casey

Research Compliance Specialist II
Office of Research and Sponsored Programs
Research Integrity, Security, and Compliance

Meet Brittney

The logo for Research SUCCESS, featuring the word "Research" in a gold script font above the word "SUCCESS" in a white sans-serif font, all contained within a blue rectangular background.

CERE COMPLETES FIRST PHASES OF FDP EVALUATION

Across campus, UM faculty and staff work hard to support students and lead research that improves lives. But when pursuing positive change, how do you distinguish what really works from what only looks like it works?

Enter: Evaluation.

Evaluators collect, interpret, and use data to help organizations to measure their outcomes and maximize their impact.

The Center for Research Evaluation (CERE) is an evaluation center housed under the Office of Research and Sponsored Programs at the University of Mississippi. CERE works with faculty, staff, foundations, and other grantmaking organizations to evaluate the impact of their work. Evaluation data are used to help improve programs, and to report up to funders on the good work being done.

Over the past five years, CERE has led more than 60 evaluation projects across seven U.S. states, the nation, and internationally.

CERE currently oversees 40 evaluation projects. Nineteen of these support UM programs or faculty; the remaining 21 are externally funded through organizations like the Oregon Department of Education, the International Baccalaureate Organisation (the IB), the University of Texas at Austin, and the Mississippi State Department of Health.

CERE also leads a network of University-Based Evaluation Centers. CERE Director Sarah Mason serves as the Co-Editor in Chief of one of two flagship journals of the American Evaluation Association, *New Directions for Evaluation*.

Learn about one of CERE's newest projects, an evaluation of the Federal Demonstration Partnership's efforts to reduce administrative burden for U.S. researchers.

Evaluation Project With FDP

[Subscribe](#) to our email list.

Faculty and Staff Researcher Support Guides

For several weeks, the Quick Start Guide for researchers has been available through a link in the ORSP Connect newsletter. This condensed guide provides links to frequently used forms and policies and shares a very high-level overview of some of the ORSP divisions that support externally funded programs.

In addition to the Quick Start Guide, this week you will notice two new document links at the bottom of this article. These are an ADA Enhanced version of the researcher support document and a robust "Full Guide". The Full Guide provides more details around the processes and procedures that go into the Pre-Award and the Award Management stages of external funding. The contact information for various divisions within this segment of ORSP is included, as are workflow maps, suggested timelines, and links to forms and policies you may need when preparing your proposal, managing your award, and more.

Researcher use of these more comprehensive documents will vary. Based on your role (the manual is faculty and staff focused) based on your School/College, and based on the type of award received, some of the information contained may not be applicable. Speak with your Dean, Chair, ADR, or RA if you're not sure how much of this document applies to you.

If you have any questions about the guides, if you spot an error, or if you note an outdated reference, please let us know! We want this guide to provide UM researchers with accurate and timely information.

Support Guides for Researchers!

Full Guide

Quick Start

ADA Enhanced

Want your team to be highlighted in the research success section?



THE UNIVERSITY of
MISSISSIPPI

Office of
Research and

[Subscribe](#) to our email list.



Have questions for ORSP? Email research@olemiss.edu

[Manage](#) your preferences | [Opt Out](#) using TrueRemove™
Got this as a forward? [Sign up](#) to receive our future emails.
View this email [online](#).

Lyceum | University, MS 38677 US

This email was sent to .
To continue receiving our emails, add us to your address book.

emma®