

1931

Pewter

Reed & Barton

Special Collections

Rhode Island School of Design, risdspecial@risd.edu

Fleet Library

Rhode Island School of Design, risdspecial@risd.edu

Follow this and additional works at: https://digitalcommons.risd.edu/specialcollections_reedandbarton_catalogs



Part of the [Industrial and Product Design Commons](#)

Recommended Citation

Reed & Barton; Collections, Special; and Library, Fleet, "Pewter" (1931). *Catalogs*. 3.
https://digitalcommons.risd.edu/specialcollections_reedandbarton_catalogs/3

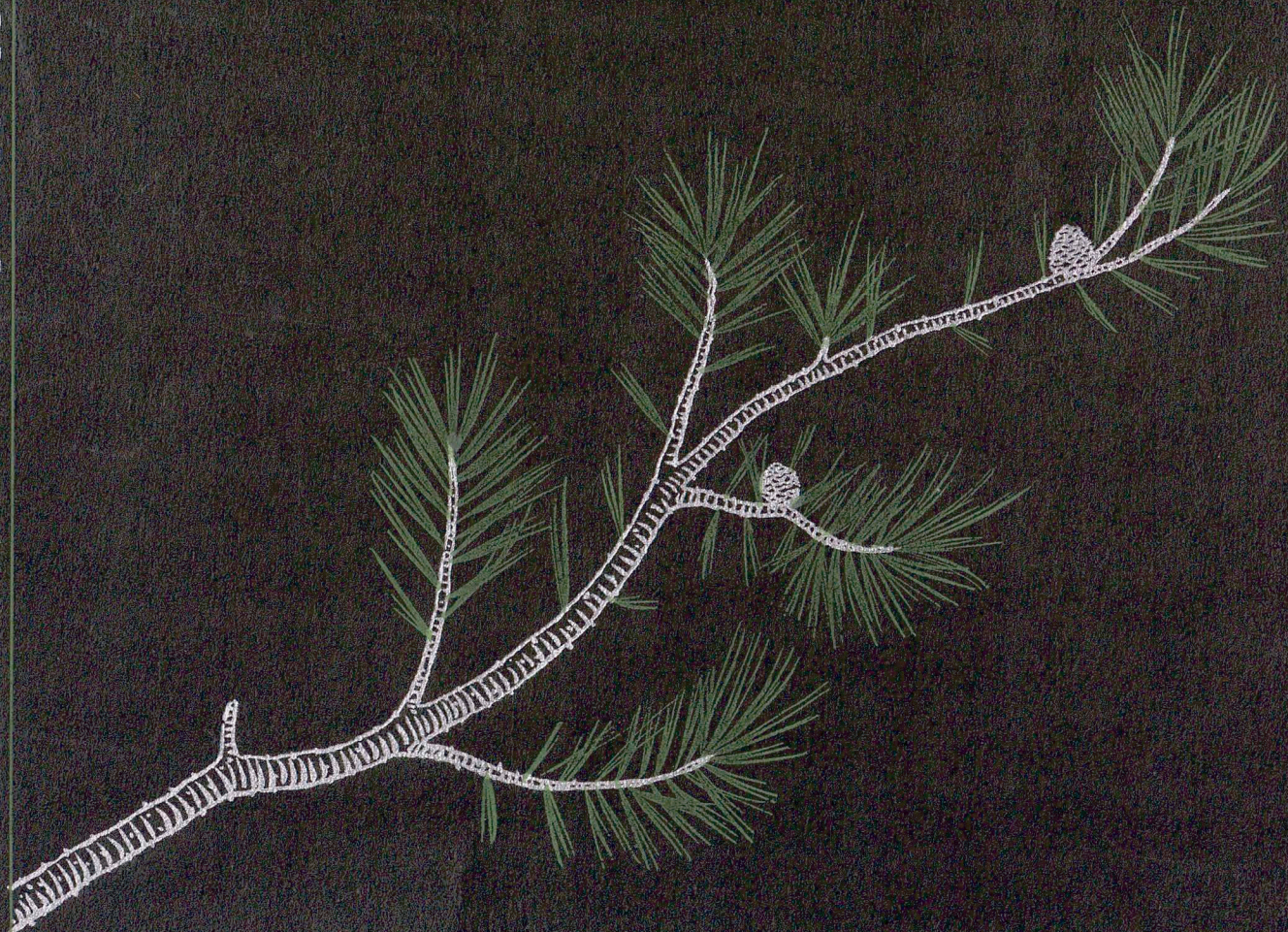
This Book is brought to you for free and open access by the Reed & Barton at DigitalCommons@RISD. It has been accepted for inclusion in Catalogs by an authorized administrator of DigitalCommons@RISD. For more information, please contact mpompeli@risd.edu.

PEWTER

BY REED & BARTON

TAUNTON, MASSACHUSETTS

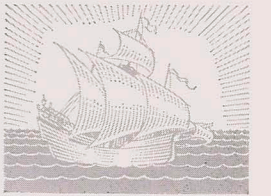
1932 - 33



B13 1943 P
3 pc lot

THE NEW CONCEPTION OF PEWTER

It was not so long ago that at the mere mention of Pewter there conjured up in one's mind the quaint charm of the old, the sentimental, the treasured. A new conception of Pewter is asserting itself today. The psychology of its appeal has changed from one of antiquity to that of modernity.



The modern hostess has found that Pewter adapts itself well to almost any type of room or table that is not elaborate or pretentious. She has also found that it can be used advantageously with china, porcelain and silver.

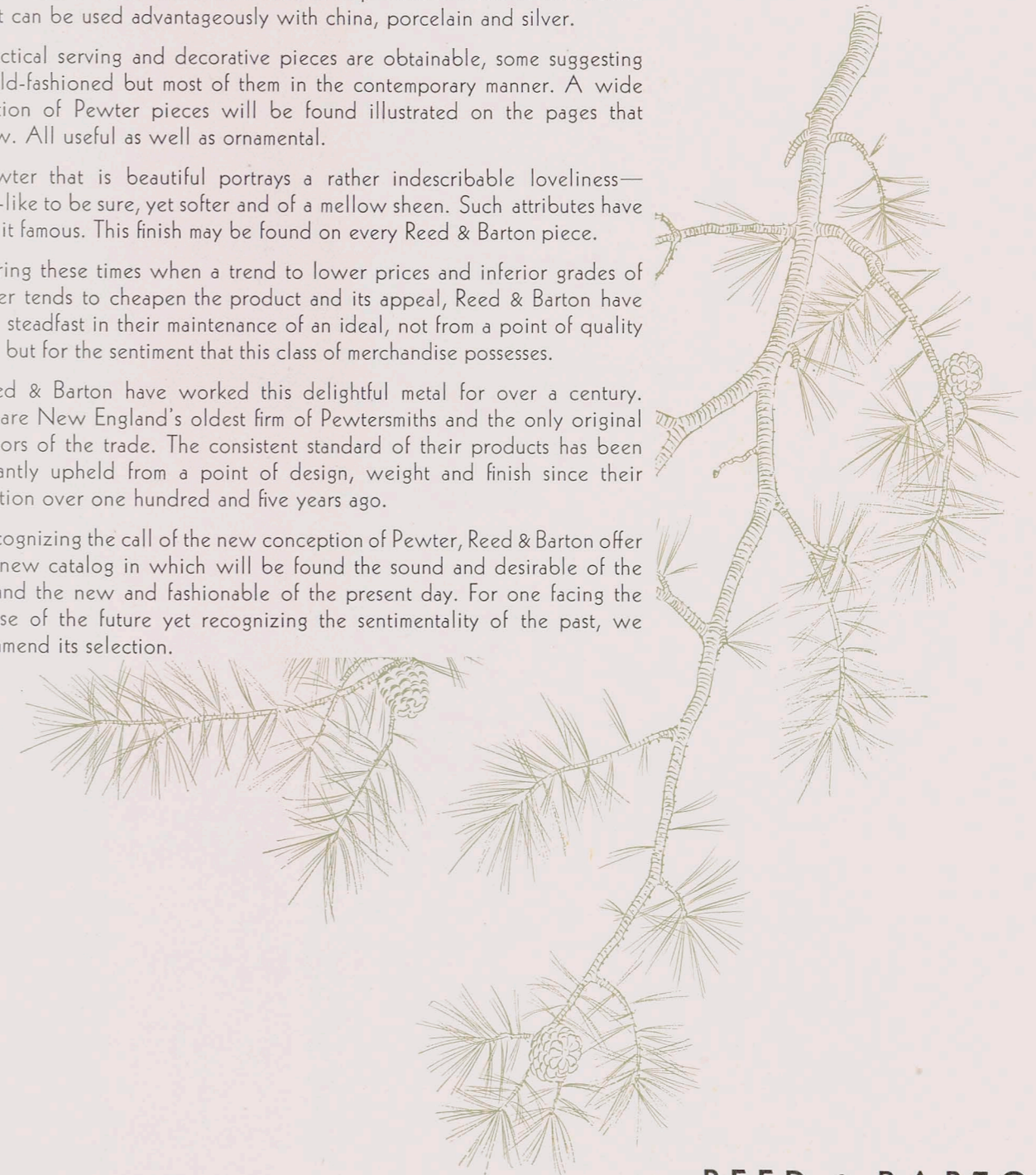
Practical serving and decorative pieces are obtainable, some suggesting the old-fashioned but most of them in the contemporary manner. A wide selection of Pewter pieces will be found illustrated on the pages that follow. All useful as well as ornamental.

Pewter that is beautiful portrays a rather indescribable loveliness—silver-like to be sure, yet softer and of a mellow sheen. Such attributes have made it famous. This finish may be found on every Reed & Barton piece.

During these times when a trend to lower prices and inferior grades of Pewter tends to cheapen the product and its appeal, Reed & Barton have stood steadfast in their maintenance of an ideal, not from a point of quality alone but for the sentiment that this class of merchandise possesses.

Reed & Barton have worked this delightful metal for over a century. They are New England's oldest firm of Pewtersmiths and the only original survivors of the trade. The consistent standard of their products has been constantly upheld from a point of design, weight and finish since their inception over one hundred and five years ago.

Recognizing the call of the new conception of Pewter, Reed & Barton offer their new catalog in which will be found the sound and desirable of the past and the new and fashionable of the present day. For one facing the promise of the future yet recognizing the sentimentality of the past, we recommend its selection.



REED & BARTON
TAUNTON, MASS.

SPECIAL

NK

7199

R44

N48

1931



SEE INDEX ON LAST PAGE

REED & BARTON

[1]

PEWTER



No. 104-8, BOWL
Height 4 In., Diameter 8 In.

5.00

No. 105-9, BOWL
Height 4 1/2 In., Diameter 9 In.

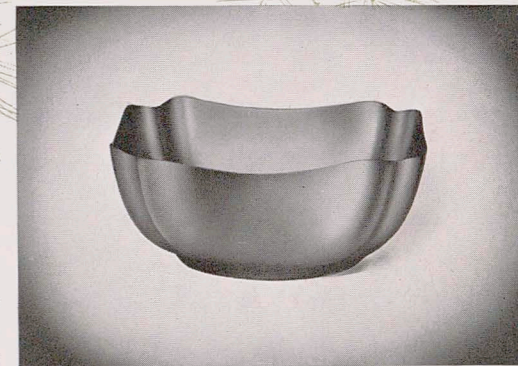
6.50



No. 4060, TEA SET No. 04060, WAITER

- Coffee Pot, Height 10 Inches, Cap. 5 Half Pints
- Tea Pot . . Height 9 Inches, Cap. 4 Half Pints
- Sugar Bowl Height 6 Inches
- Cream Pitcher, Height 5 Inches, Cap. 12 Oz.
- Waste Bowl Height 4 Inches
- Kettle . . . Height 13 Inches, Cap. 5 Half Pints
- No. 04060 Waiter Length 24 Inches

11.00
10.50
7.00
7.00
4.50
24.00
24.00



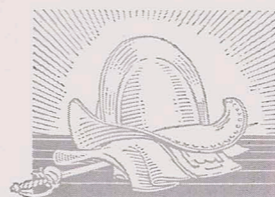
No. 107 BOWL
Height 3 Inches
7 1/4 Inches Square

5.00



No. 5872, BOWL
Height 4 3/4 Inches
Diameter 6 3/4 Inches

7.50



REED & BARTON HAVE BEEN MAKING PEWTER FOR OVER ONE HUNDRED YEARS

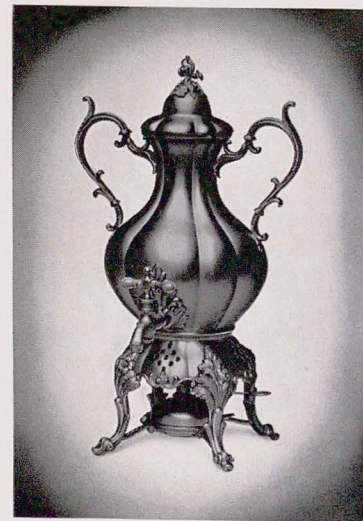
2-24-21



No. 1795, TEA SET
Coffee Pot, Height 12 In., Cap. 7 Half Pints
Tea Pot, Height 11 Inches, Cap. 6 Half Pints
Sugar Bowl Height 8 Inches
Cream Pitcher, Height 7½ In., Cap. 12 Oz.
Waste Bowl Height 4½ Inches
No. 0101½ Waiter . . . Length 20 Inches



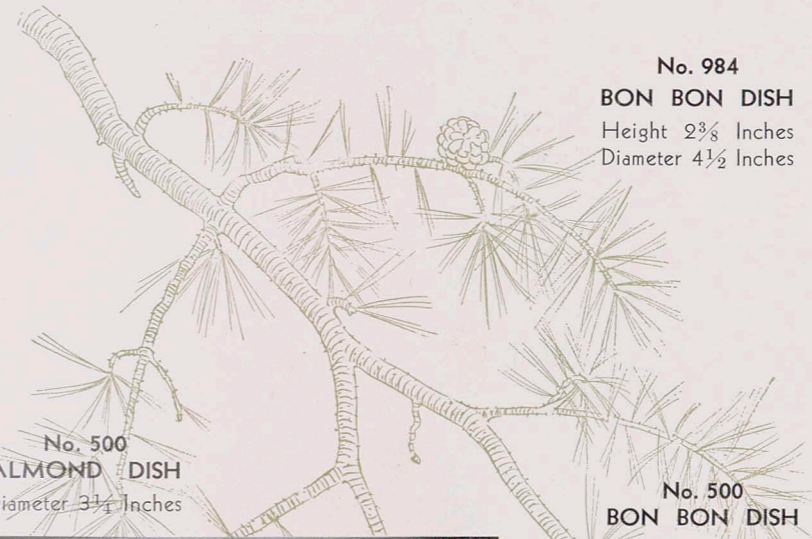
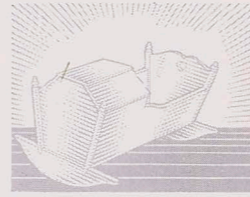
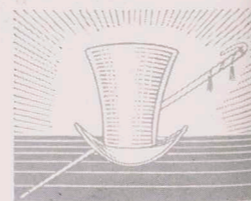
No. 990
BON BON DISH
Diameter 4½ Inches



No. 1795, URN
Height . . . 17 Inches
Capacity 11 Half Pints



No. 1795, KETTLE
Height . . . 16 Inches
Capacity 10 Half Pints



No. 500
ALMOND DISH
Diameter 3¼ Inches



No. 984
BON BON DISH
Height 2⅜ Inches
Diameter 4½ Inches



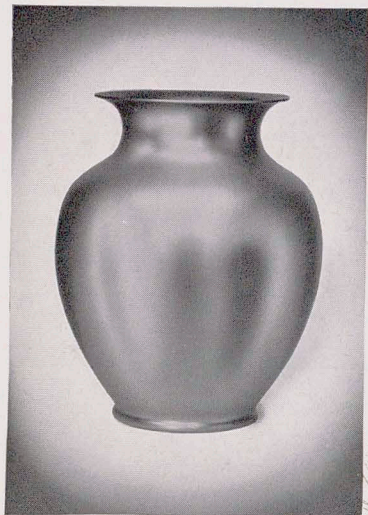
No. 500
BON BON DISH
Diameter 6¼ Inches



No. 986
BON BON DISH
Height 2½ Inches
Diameter 5½ Inches



No. 3690, TEA SET No. 01205, WAITER
Coffee Pot, Height 10½ Inches, Cap. 5 Half Pints
Tea Pot . . . Height 9 Inches, Cap. 4½ Half Pints
Sugar Bowl Height 6½ Inches
Cream Pitcher. Height 5 Inches, Cap. 12 Ounces
Waste Bowl Height 4½ Inches
No. 01205 Waiter Length 19 Inches

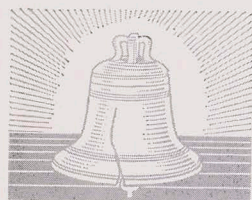
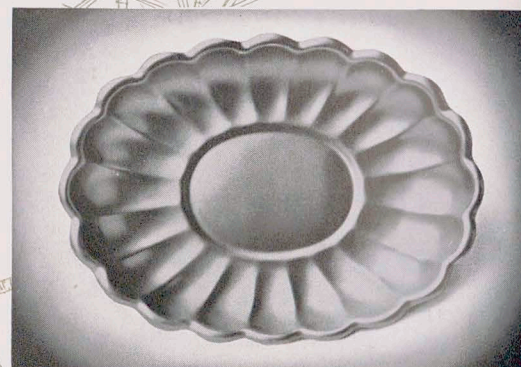


No. 5074, VASE
Height 7½ Inches

No. 109
SALAD DISH
Diameter 13 Inches



No. 110
SALAD DISH
Length 15 Inches

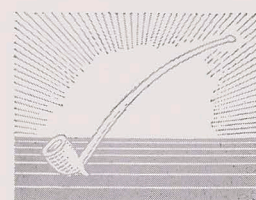


No. 2050, TEA SET
Coffee Pot . Height 6 Inches, Cap. 5½ Half Pints
Tea Pot . . . Height 7 Inches, Cap. 4 Half Pints
Sugar Bowl . . Length 6 Inches, Height 3¼ Inches
Cream Pitcher, Length 5½ In., Height 2½ In.,
Cap. 10 Ounces

REED & BARTON HAVE BEEN MAKING PEWTER FOR OVER ONE HUNDRED YEARS



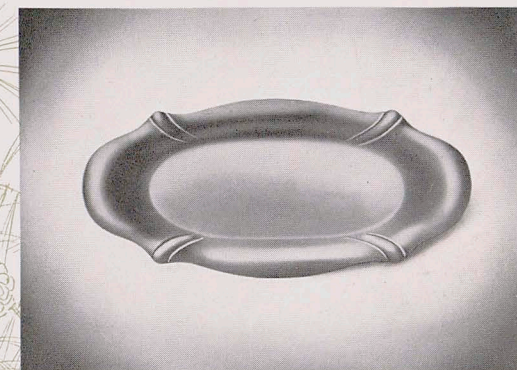
No. 1671
SYRUP AND PLATE
Pitcher, Height . . 5¾ Inches
Plate, Diameter . . . 5 Inches



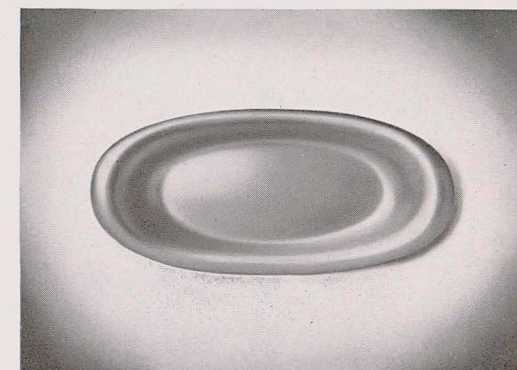
REED & BARTON HAVE BEEN MAKING PEWTER FOR OVER ONE HUNDRED YEARS



No. 75, A. D. COFFEE SET No. 1030½, WAITER
Coffee Pot . Cap. 2½ Half Pints, Height 11 Inches
Sugar Bowl Height 6 Inches
Cream Pitcher . Cap. 8 Ounces, Height 5½ Inches
No. 1030½ Waiter Diameter 11 Inches



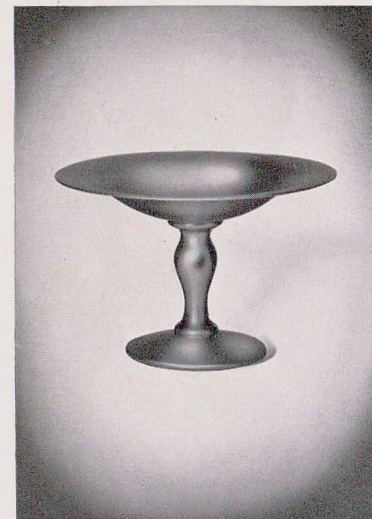
No. 5170
BREAD TRAY
Length 13¼ Inches



No. 4949
BREAD TRAY
Length 13¼ Inches



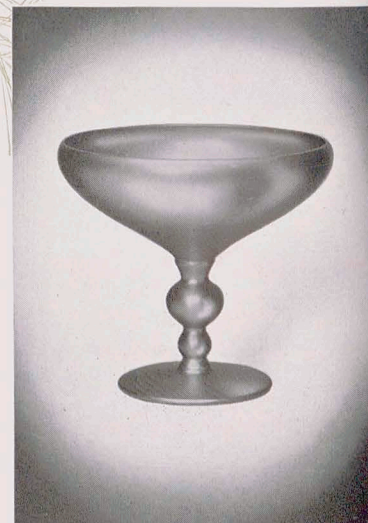
No. 1824, AFTER DINNER COFFEE SET
Coffee Pot, Height 8 3/4 Inches, Cap. 16 Ounces
Sugar Bowl, Height 2 3/4 Inches, Cap. 4 1/2 Oz.
Cream Pitcher, Height 2 7/8 Inches, Cap. 4 Ounces



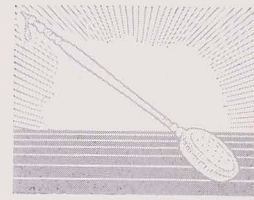
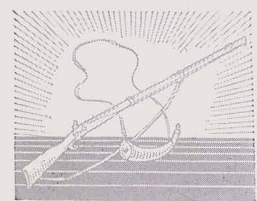
No. 5870, COMPOTE
Height . . . 4 Inches
Diameter 6 1/8 Inches



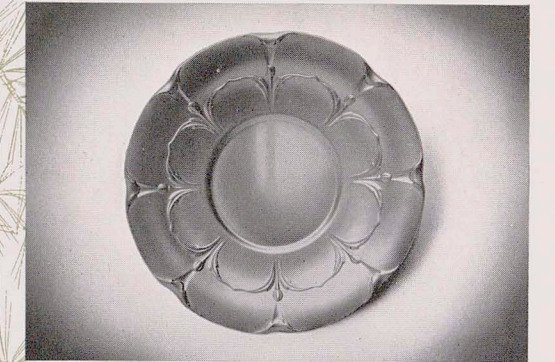
No. 500, COMPOTE
Height . . . 6 1/2 Inches
Diameter . . . 6 Inches



No. 5868, COMPOTE
Height 5 1/2 Inches
Diameter 5 5/8 Inches



**No. 500
MAYONNAISE BOWL**
Height . . . 2 1/4 Inches
Diameter . . . 5 1/2 Inches



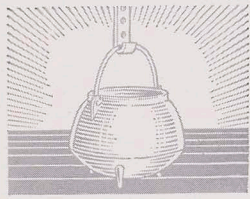
**No. 210
SANDWICH PLATE**
Diameter . . . 10 1/2 Inches



No. 1308, DESSERT SET
Sugar Bowl . . . Height 6 Inches Over All
Cream Pitcher . . . Capacity 7 Ounces
No. 11090 Waiter . . . Diameter 10 Inches



No. 800, COMPOTE
Height . . . 3 Inches
Diameter . . . 7 Inches



CHILD'S CUPS

Left—No. 1691
Height . . 2½ Inches
Center—No. 2030
Height . . 2¼ Inches
Right—No. 2374
Height . . 2¾ Inches

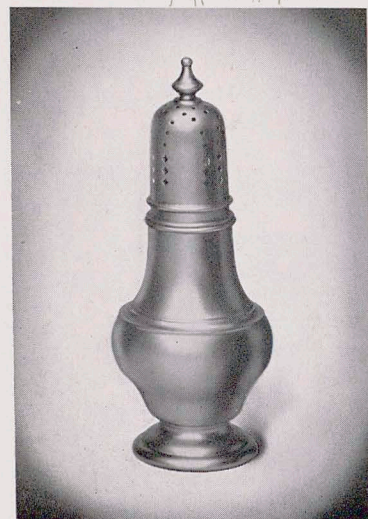


PORRINGERS

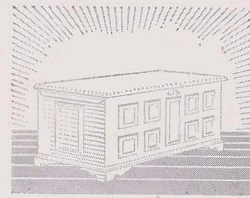
No. R59, Diameter 4½ Inches
No. 15X, Diameter 4 Inches
No. R54, Diameter 3½ Inches
No. R52, Diameter 2½ Inches

HOT MILK JUGS

No. 8 Cap. 12 Ounces
No. 9 Cap. 16 Ounces



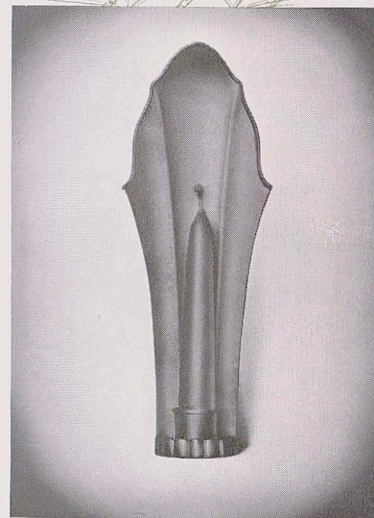
No. 262
MUFFINEER
Height 7 Inches



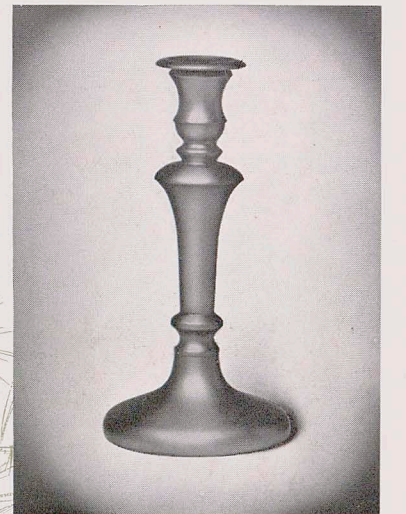
No. 107
CANDLESTICK
Height . 2¾ Inches



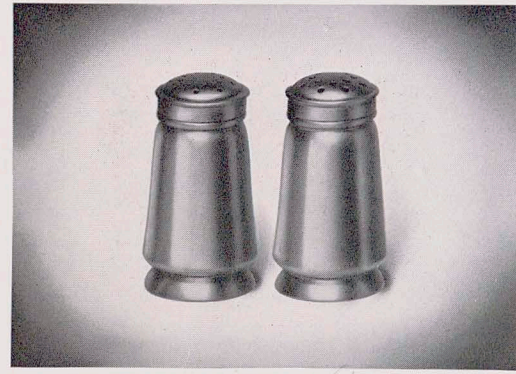
No. 100, SCONCE
Height . 10 Inches



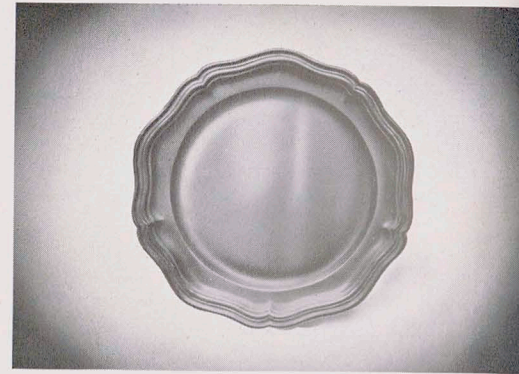
No. 739
CANDLESTICK
Height 8¾ Inches



CONSOLE SET
No. 116 Candlestick
Height 3¼ Inches
Bowl 104 or 105
(See page one)



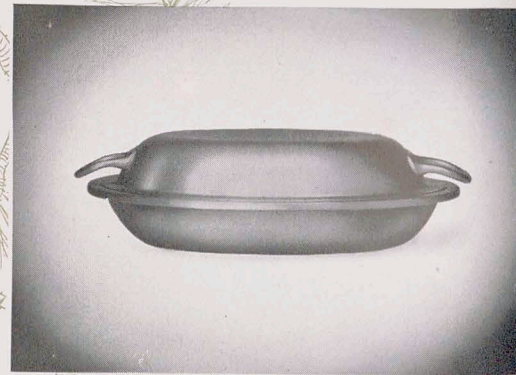
No. 548, SALT AND PEPPER SHAKERS
Height . . . 2¾ Inches



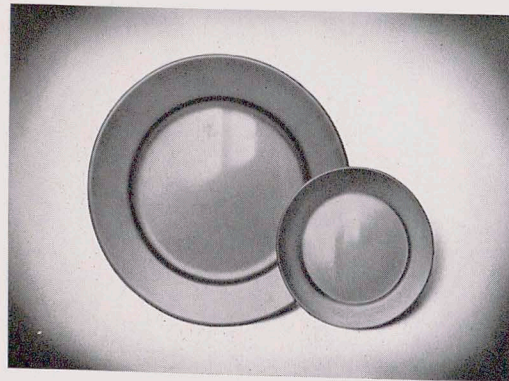
No. R62
SERVICE PLATE
Diameter 10 Inches



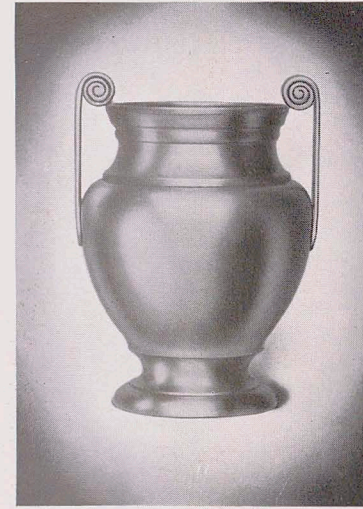
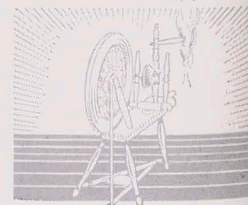
No. 1196, BAKE DISH
Pyrex. Glass Lining, Diameter
6½ Inches, Cap. 16 Ounces



No. 1281
VEGETABLE DISH
(DOUBLE)
Length . . 10¼ Inches

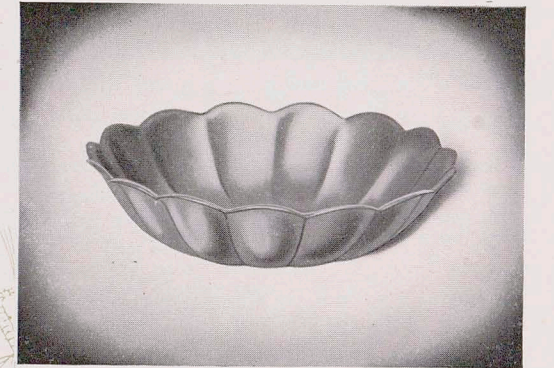


SERVICE AND BREAD AND BUTTER PLATES
Large Plate No. 1 Diameter 10 Inches
Small Plate No. 3 Diameter 6 Inches



No. 150, VASE
Height . . 9 Inches

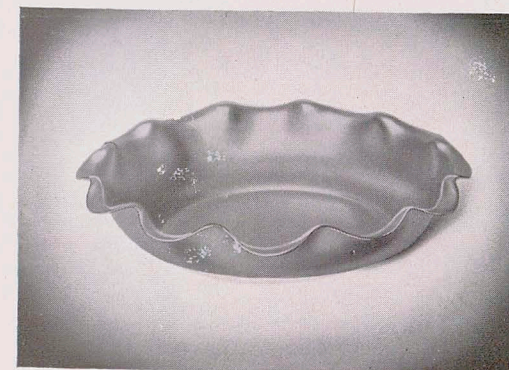
No. 925, SUGAR BOWL
Height 3½ Inches
No. 926, CREAM PITCHER
Capacity 8 Ounces



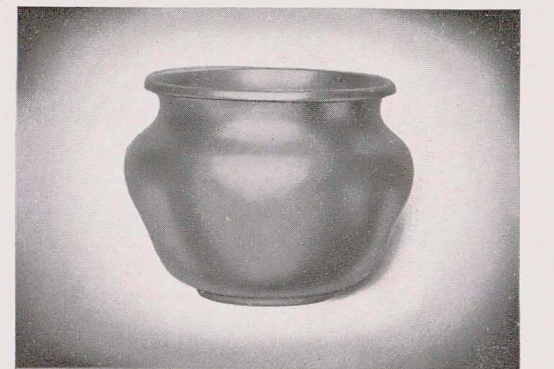
No. 175, BOWL
Diameter, 7¾ Inches



No. 120
BOWL OR FRUIT DISH
Diameter . . . 10¾ Inches



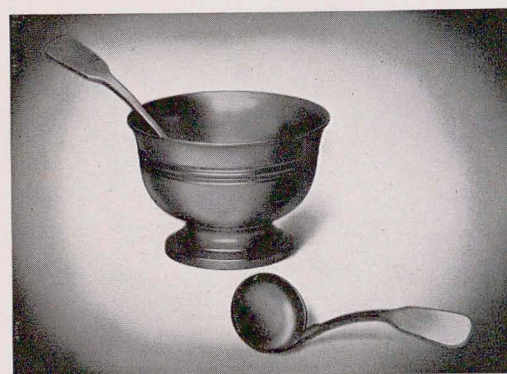
No. 115
BAKED APPLE DISH
Diameter . . 10¾ Inches



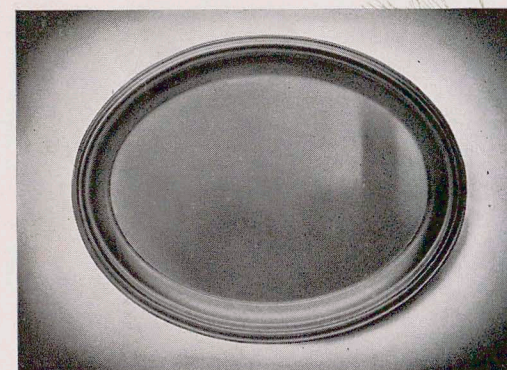
No. 100, FLOWER BOWL
Height 5¼ Inches
Diameter 5¾ Inches



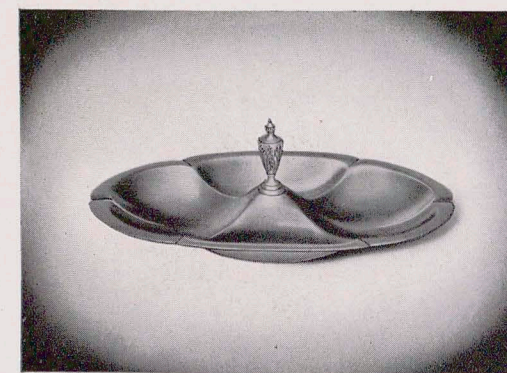
No. 40
GRAVY BOAT AND
TRAY
Boat, Capacity . . . 8 Ounces
Tray, Length . . . 7 3/4 Inches



SUGAR BOWL AND LADLE
No. R4 Bowl, Diameter, 4 1/4 Inches
No. R80 Ladle, Length, 6 Inches



No. 1250 WAITER
Length . . . 9 Inches

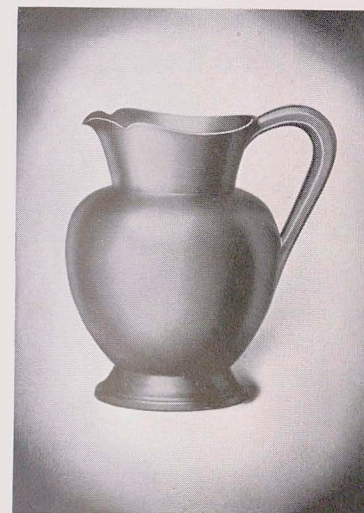


No. 992, RELISH
OR BON BON DISH
Length . . . 10 Inches

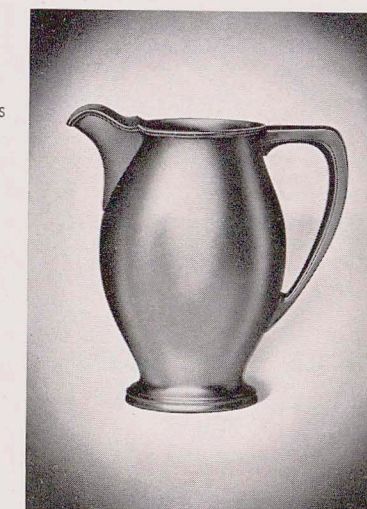


No. 248, BREAD
OR CELERY TRAY
Length . . . 10 1/2 Inches

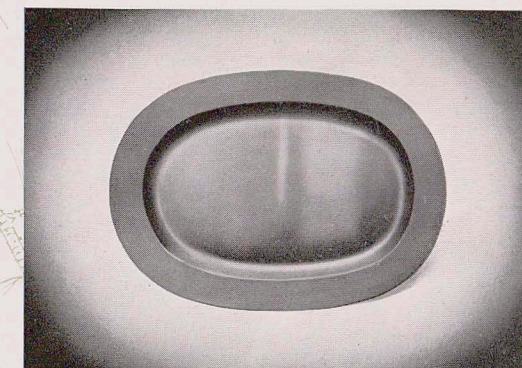
REED & BARTON HAVE BEEN MAKING PEWTER FOR OVER ONE HUNDRED YEARS



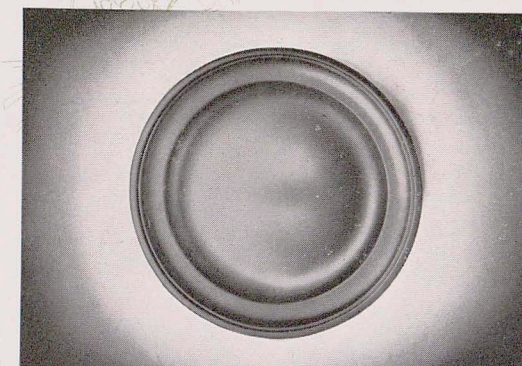
No. 5460, PITCHER
Capacity . . . 8 Glassfuls



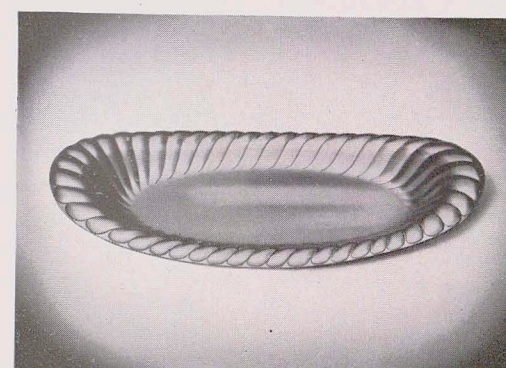
No. 5580, PITCHER
Capacity . . . 8 Glassfuls



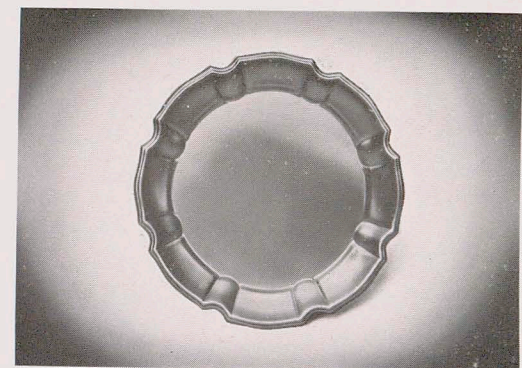
No. R66, MEAT PLATTER
Length . . . 16 Inches



No. 1590, CHOP DISH
Diameter . . . 14 Inches

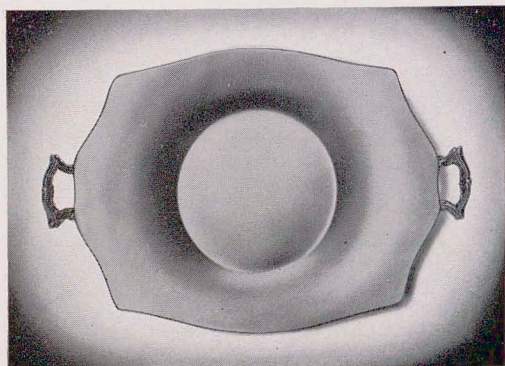


No. 112, SALAD DISH
Diameter . . . 13 1/4 Inches
Furnished with Plain or Decorated
crystal glass Relish Lining at ad-
ditional cost.

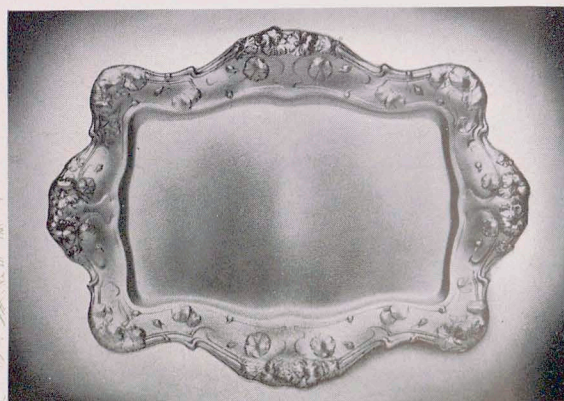


No. 249
BREAD OR CELERY TRAY
Length . . . 13 Inches

REED & BARTON HAVE BEEN MAKING PEWTER FOR OVER ONE HUNDRED YEARS



No. 205
SANDWICH TRAY
Length . . . 13 Inches



No. 125 WAITER
Size, 11 x 15 Inches



No. 112, COMPOTE
Height 4 3/4 Inches
Diameter 7 1/2 Inches

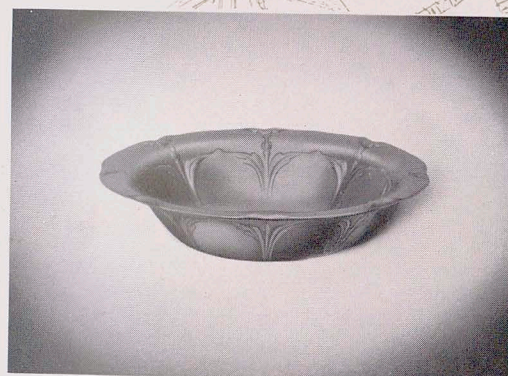
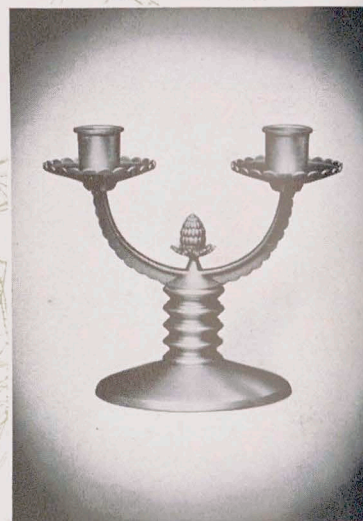


No. 111, COMPOTE
Height 4 Inches
Diameter 6 1/2 Inches

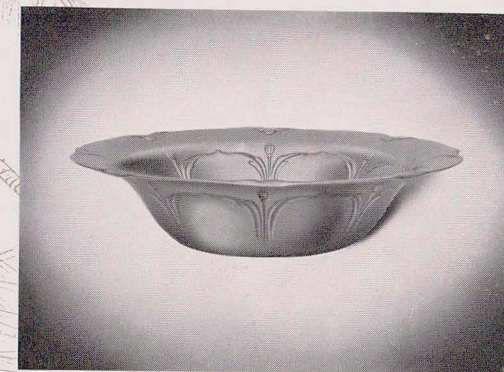


No. 1018 WATER GOBLET
Height 6 3/4 Inches

No. 106-2
CANDELABRUM
Height 5 3/4 Inches
Overall Length . . . 6 1/2 Inches



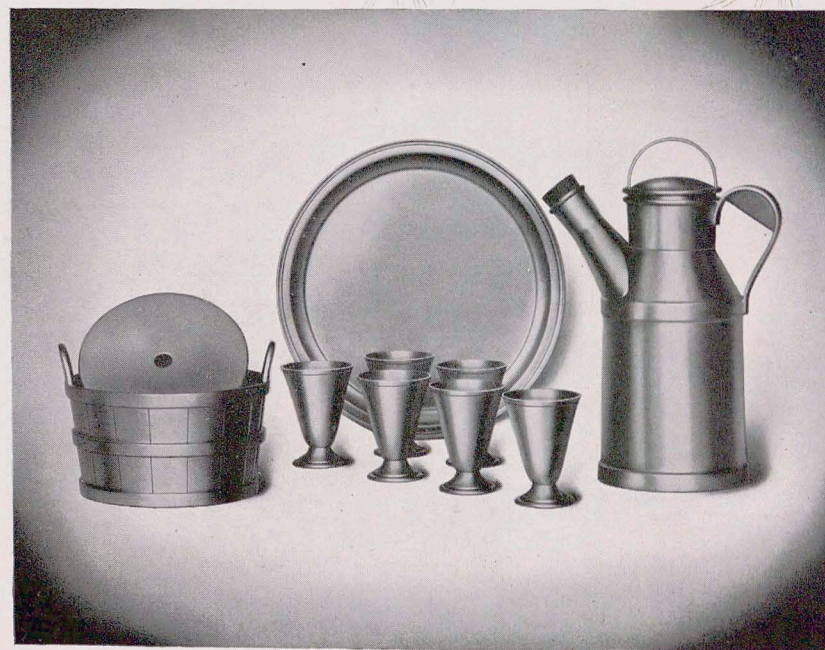
No. 210, BON BON DISH
Diameter 6 Inches
(See No. 210, Sandwich Plate, Page 7)



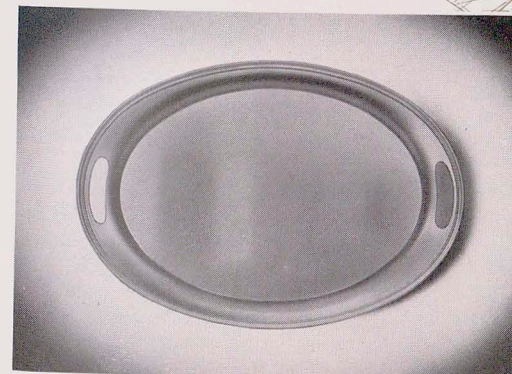
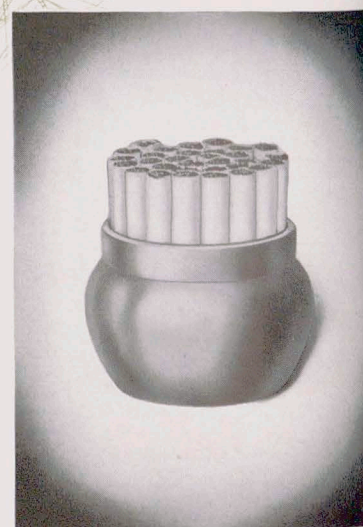
No. 210, BOWL
Height 2 1/4 Inches
Diameter 10 Inches
(See No. 210, Sandwich Plate, Page 7)

BEVERAGE SET

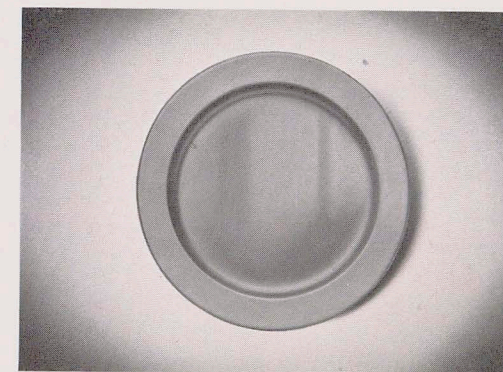
- No. 25 Shaker Capacity, 64 Ounces
- No. 10 Cup Capacity, 2 Ounces, Height, 3 Inches
- No. 550 Ice Tub Capacity, 6 Half Pints, Diameter, 6 1/2 Inches
- No. 11090 Waiter Diameter, 10 Inches



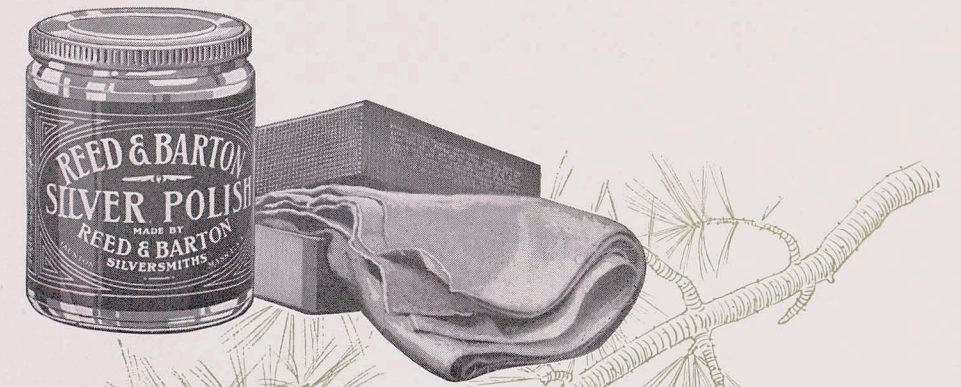
No. 50 CIGARETTE JAR
Diameter 2 1/4 Inches



No. 4060-18, WAITER
Length 18 Inches



No. 1600, CHOP DISH
Diameter 13 1/2 Inches



To Clean Reed & Barton Pewter

ON MODERN finished pieces, having the lustre of sterling silver, we recommend applying Reed & Barton Silver Polish or Silver Cleaning Powder. In the event that powder is employed, we suggest adding a sufficient quantity of vinegar to form a paste. Apply to the metal, rinse in hot water and wipe dry. Then polish with the Pewter Polishing Cloth.

If you do not stock Reed & Barton Polishing Cloths, Silver Polish and Powder we will gladly submit samples and prices.

INDEX

	PAGE		PAGE		PAGE
Almond Dish	3	Compotiers	6-7	Plates	10
Bake Dish	10	Console Sets	9	Porringers	8
Beakers	12	Dessert Sets	7	Salad Dishes	4
Beverage Sets	12	Goblets	12	Salt and Peppers	10
Bon Bon Dishes	2-3	Gravy Sets	11	Sandwich Plates	7
Bowls	1-11	Hot Milk Jugs	8	Sugar and Cream Sets	7
Bread Trays	5	Ice Tubs	12	Syrup Set	5
Bread and Butter Plates	10	Kettle	2	Tea Sets	1-2-3-4
Candelabra	14	Mayonnaise Bowl	7	Trays	13-14
Candlesticks	9	Mayonnaise Ladle	11	Urn	2
Child's Cups	8	Meat Dishes	11	Vases	4
Cigarette Box	12	Muffineer	8	Vegetable Dish	10
Coffee Sets	5-6	Pitchers	13	Waiters	13-14

PEWTER PRICE LIST

Effective February 1, 1932

PAGE 1

No. 4060 Tea Set	
Coffee Pot	\$11.00
Tea Pot	10.50
Sugar Bowl	7.00
Cream Pitcher	7.00
Waste Bowl	4.50
Kettle	24.00
No. 04060 Waiter	35.00
No. 104-8 Bowl	5.00
No. 105-9 Bowl	6.50
No. 107 Bowl	5.00
No. 5872 Bowl	7.50

PAGE 2

No. 1795 Tea Set	
Coffee Pot	24.00
Tea Pot	22.00
Sugar Bowl	14.00
Cream Pitcher	12.00
Waste Bowl	8.00
No. 0101½ Waiter	25.00
No. 1795 Kettle	60.00
No. 1795 Urn	70.00
No. 990 Bon Bon Dish	(Discontinued)

PAGE 3

No. 3690 Tea Set	
Coffee Pot	16.00
Tea Pot	14.00
Sugar Bowl	10.00
Cream Pitcher	9.00
Waste Bowl	7.00
No. 01205 Waiter	22.50
No. 500 Almond Dish	Doz. 10.00
No. 500 Bon Bon Dish	2.00
No. 984 Bon Bon Dish	2.00
No. 986 Bon Bon Dish	(Discontinued)

PAGE 4

No. 2050 Tea Set	
Coffee Pot	10.00
Tea Pot	8.00
Sugar Bowl	6.00
Cream Pitcher	4.00
No. 5074 Vase	5.00
No. 109 Salad Dish	7.50
No. 110 Salad Dish	7.50

PAGE 5

No. 75 A. D. Coffee Set	
Coffee Pot	(Discontinued)
Sugar Bowl	(Discontinued)
Cream Pitcher	(Discontinued)
No. 1030½ Waiter	(Discontinued)
No. 1671 Syrup and Plate	5.00
No. 5170 Bread Tray	4.00
No. 4949 Bread Tray	3.00

PAGE 6

No. 1824 A. D. Coffee Set	
Coffee Pot	10.50
Sugar Bowl	3.75
Cream Pitcher	3.75
No. 500 Compote	5.00
No. 5868 Compote	(Discontinued)
No. 5870 Compote	3.00

PAGE 7

No. 1308 Dessert Set	
Sugar Bowl	3.75
Cream Pitcher	3.75
No. 11090 Waiter	5.00
No. 210 Sandwich Plate	3.50
No. 500 Mayonnaise Bowl	2.50
No. 800 Compote	3.00

PAGE 8

No. 1691 Child's Cup	\$2.00
No. 2030 Child's Cup	2.00
No. 2374 Child's Cup	2.50
No. R59 Porringer	4.00
No. 15X Porringer	2.50
No. R54 Porringer	1.50
No. R52 Porringer	1.00
No. 8 Hot Milk Jug	(Discontinued)
No. 9 Hot Milk Jug	8.00
No. 262 Muffineer	(Discontinued)

PAGE 9

No. 107 Candlestick	3.00
No. 739 Candlestick	(Discontinued)
No. 100 Sconce	(Discontinued)
No. 116 Candlestick	3.00
No. 104 or 105 Bowl	(See Page One)

PAGE 10

No. 548 Salt and Pepper	(Discontinued) . . Each	9.00
No. 1196 Bake Dish		9.00
No. 1 Service Plate	Doz.	50.00 ^{4.16}
No. 3 Bread and Butter Plate	Doz.	20.00 ^{1.66 ea.}
No. R62 Service Plate		5.00
No. 1281 Vegetable Dish (Dbl.)		12.00

PAGE 11

No. 115 Baked Apple Dish	5.00
No. 120 Bowl	5.00
No. 175 Bowl	3.00
No. 925 Sugar Bowl	3.00
No. 926 Cream Pitcher	3.00
No. 150 Vase	10.00
No. 100 Flower Bowl	5.00

PAGE 12

No. 40 Gravy Boat & Tray	5.00
No. R4 Bowl	2.50
No. R80 Ladle	1.25
No. 1250 Waiter	3.50
No. 992 Relish or Bon Bon Dish	3.75
No. 248 Bread Tray	3.00

PAGE 13

No. 5460 Pitcher	7.50
No. 5580 Pitcher	10.00
No. R66 Meat Dish	7.50
No. 1590 Chop Dish	7.50
No. 249 Bread Tray	3.00
* No. 112 Salad Dish	7.50

PAGE 14

No. 205 Sandwich Tray	7.50
No. 125 Waiter	8.50
No. 1018 Water Goblet	3.00
No. 106-2 Candelabra	7.50
No. 25 Beverage Shaker	13.00
No. 10 Beverage Cup	ea. 1.50
No. 11090 Waiter	5.00
No. 550 Ice Tub	9.00
No. 50 Cigarette Jar	1.00

PAGE 14A

No. 111 Compote	3.50
No. 112 Compote	4.50
No. 1600 Chop Dish	7.00
No. 4060-18 Waiter	12.00
No. 210 Bon Bon Dish	2.00
No. 210 Berry Bowl	5.00 4.00

* Plain Crystal Glass Relish Lining \$3.00 extra
Decorated Crystal Glass Relish Lining 6.00 extra



