



# Adherence to Reporting Guidelines and Clinical Trial Registration in Psychiatry and Mental Health Journals: Preliminary Results of a Cross-Sectional Analysis

Karim Kari, B.S., Varun Jhanji, B.S., Jazmine Rodriguez, B.S., Caleb Smith, B.S., Danya Nees B.S., Griffin Hughes, B.A., B.S. Matt Vassar Ph.D

## INTRODUCTION

Reporting guidelines (RGs) and study registration regulations have been adopted by various journals. It is imperative for journals to implement RGs and study registration recommendations or requirements for authors to follow when publishing a study to reduce bias and advance research methods. It is unclear how well psychiatry and mental health journals adopt RGs and clinical trial registration policies, therefore the purpose of this systematic review is to investigate how these journals adhere to the use of RG and study registration policies.

## METHODS

- Conducted a systematic review of top 100 psychiatry medical journals according to the 2021 Scopus CiteScore tool
- Assessed the "Instructions to authors" webpage of each journal in a masked, duplicate fashion
- Evaluated whether journals required, recommended, or mentioned RGs outlined by the EQUATOR network
- Obtained statements regarding clinical trial registration
- Attempted to reduce risk of bias by confirming article types accepted by each journal by contacting editorial team.

## RESULTS

- 37% of the journals mentioned the EQUATOR Network.
- The most referenced guidelines were CONSORT at 56% and PRISMA at 48%
- CONSORT and PRISMA guidelines were more likely to be recommended/required in journals that mention the EQUATOR network ( $p < .001$ ).
- MOOSE and QUOROM guidelines were the least mentioned guidelines.
- 62 of the 100 journals (62%) either recommend or require clinical trial registration.

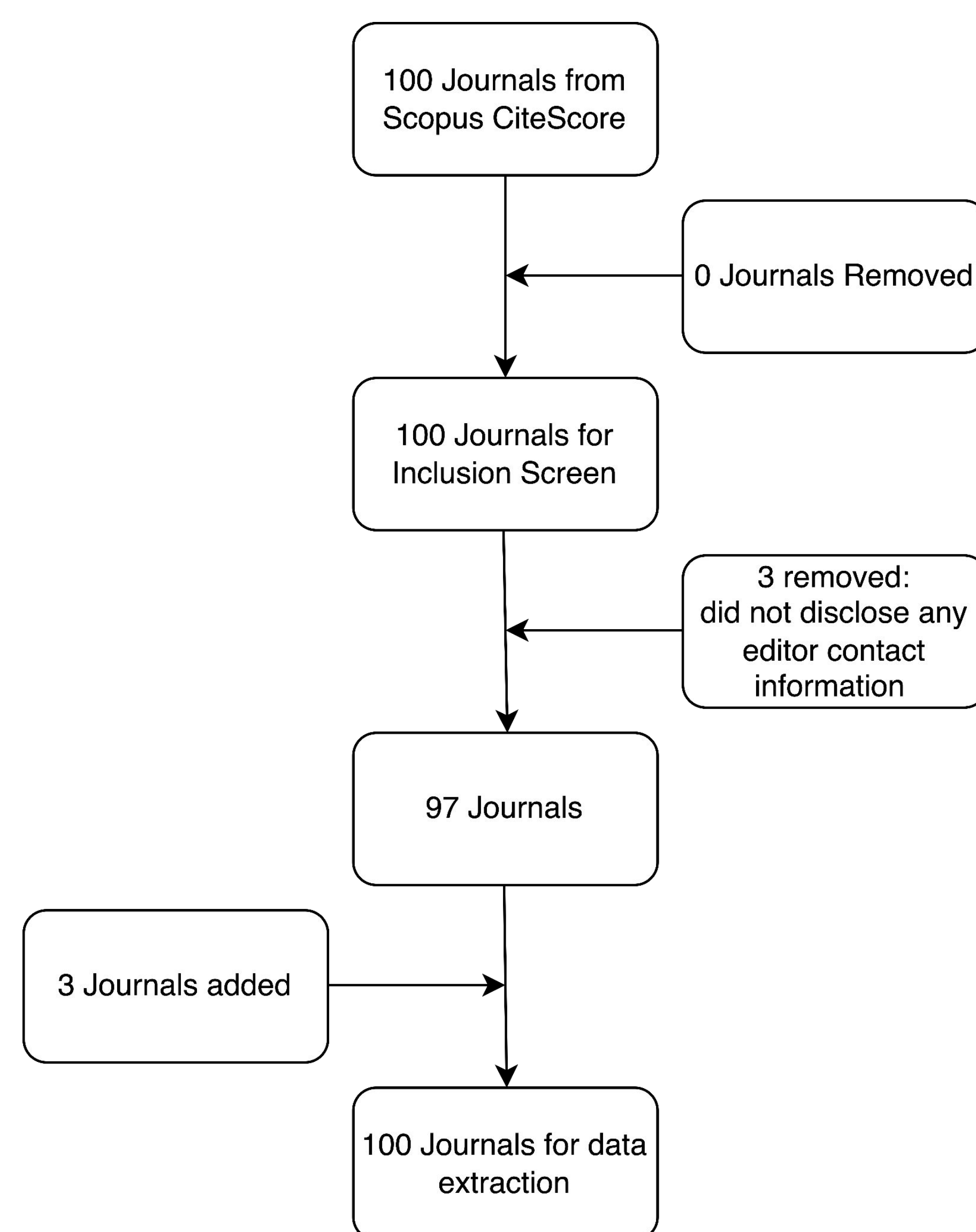
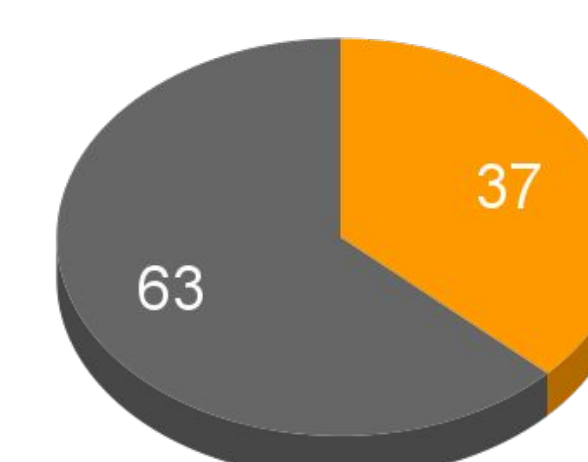


Figure 1: PRISMA Flow Diagram of Included Journals

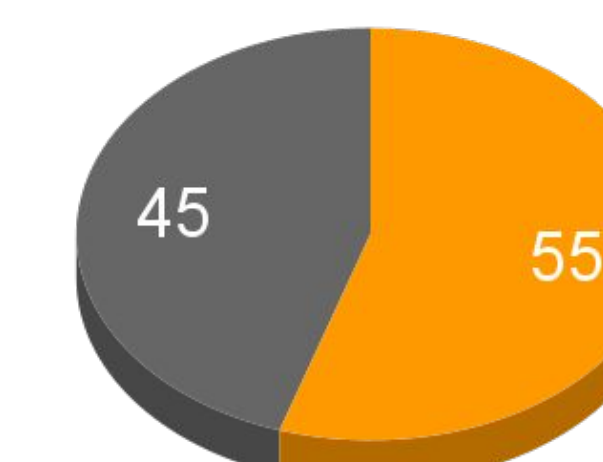
	Overall, N = 100
<b>CONSORT</b>	
Not Mentioned	42 (44%)
Recommended	39 (41%)
Required	14 (15%)
<b>PRISMA</b>	
Not Mentioned	51 (52%)
Recommended	36 (36%)
Required	12 (12%)
<b>QUOROM</b>	
Not Mentioned	96 (98%)
Recommended	2 (2.0%)

Table 1: Data by Guideline Reporting

### EQUATOR Network



### ICMJE



● Mentions EQUATOR ● Not Mentioned ● Mentions ICMJE ● Not Mentioned

Figure 2: EQUATOR & ICMJE in Psychiatry journals

### Clinical Trial Registration

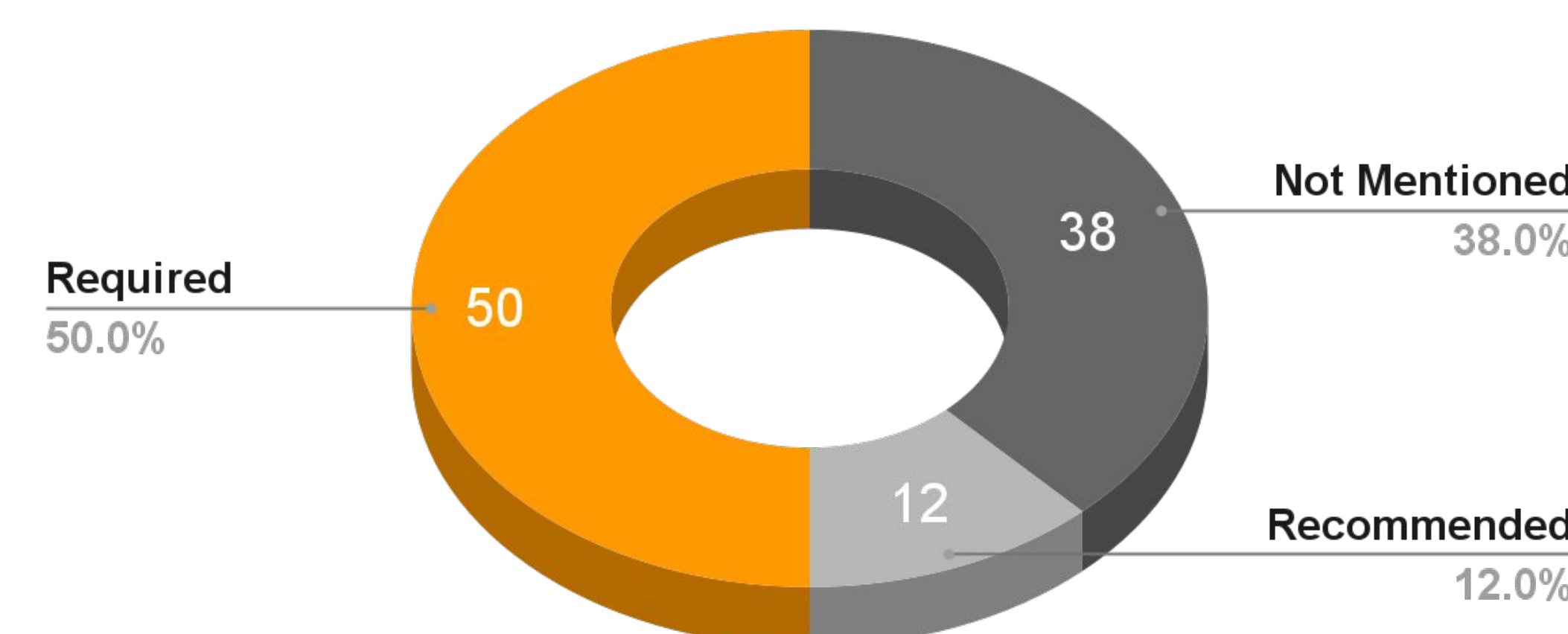
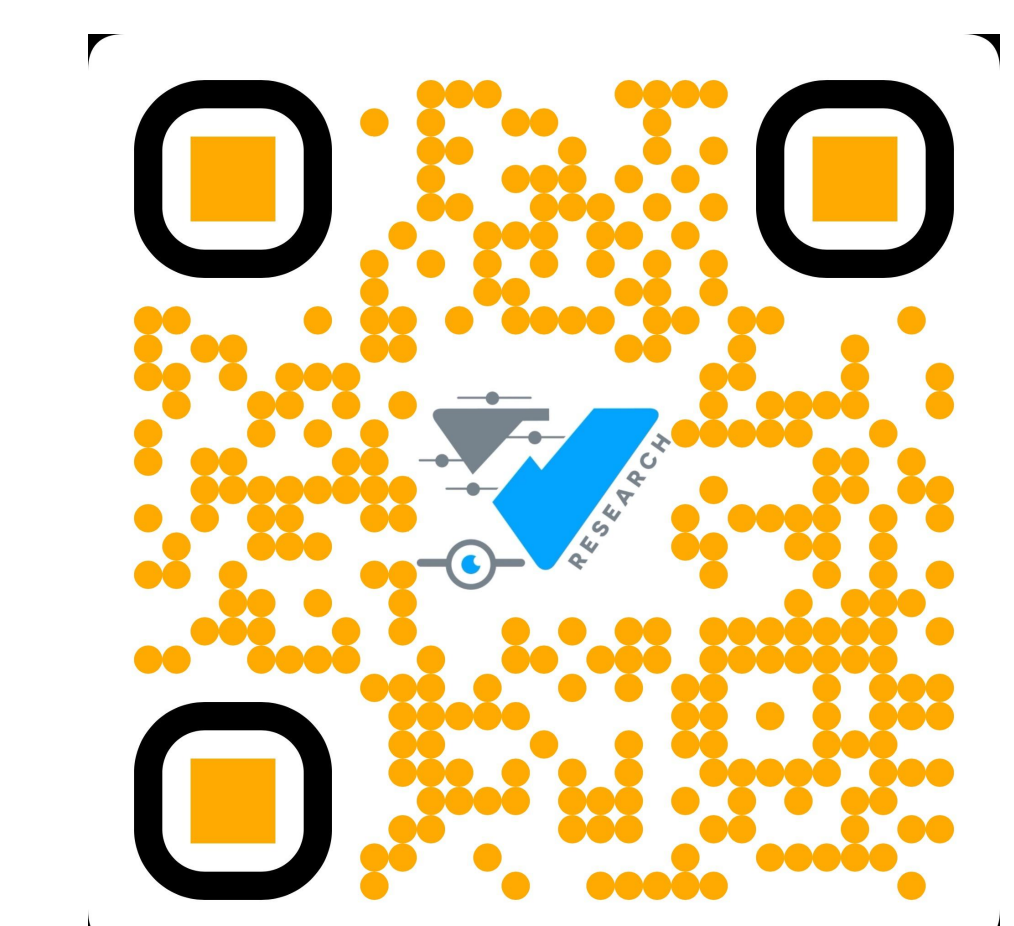


Figure 3: Clinical Trial Registration in Top 100 Journals

## CONCLUSION

- Our results indicate the majority of psychiatry journals do not mention RGs or the EQUATOR network.
- CONSORT was the most mentioned guideline, yet was only required/recommended in 56% of psychiatric journals.
- We recommend that the editors of psychiatry and mental health journals emphasize applying RGs and study registration requirements in the "Instructions to Authors" section of their webpage.

## REFERENCES



## ACKNOWLEDGEMENTS

Jon Goodell, MISLT, AHIP  
Vassar Research Team

