

ARTIFICIAL INTELLIGENCE TO TRANSFORM

ION

rifai Chronocam

Orbital Insight pilot.ai

captricity GROKSTYLE

AUTO

nuTonomy drive.ai

AMOTIVE nauto

riexar ZOX

ROBOTICS

UBTEC  
Dream With Robot

anxi. Rok

dispatch  
Building delivery smart

SIGOPT

logz.io

loop.ai  
COGNITIVE COMPUTING

Numenta

cal  
soning

IOT/IIOT

nanit KONUX

VERDIGRIS

SIGHT MACHINE  
Manufacturing Analytics

COMMERCE

bloomreach

mode.ai

FINTECH &  
INSURANCE

CAPE  
ANALYTICS

NUMERAI

Kasisto



EMERGENT TOPICS IN PHYSIOTHERAPY



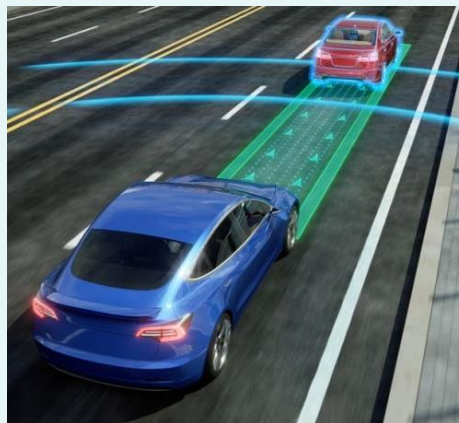
# Generative AI tools in Healthcare Education and Research

Pedro Chana Valero  
António Alves Lopes  
Jeroen Alessi  
Margarida Jardim

## STATEMENT 1

**“At the very least, AI is interesting.”**

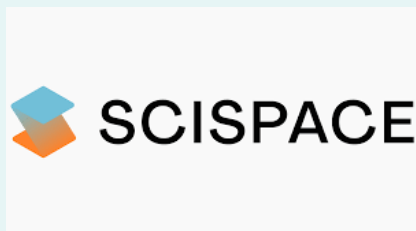
There's never been something similar.



## STATEMENT 2

**“AI is here to stay and we need to talk about it”.**

“Healthcare people **might not know they love AI** unless we talk about and we experience with it”





**Prompt:** Create an image of a teacher struggling in a generative AI hands on workshop.



BING CHAT

**Prompt:** Create an image of a teacher enjoying and having the best time of their lives in a generative AI hands on workshop.



BING CHAT



### STATEMENT 3 (The weakness of tools)

**“Generative AI is a tool.”**

“You can choose to equip yourself with the tools that you need”

“But remember, they are an extension. You are whole, with or without them”.

## STATEMENT 4

**“Education is a deeply human act rooted in social education.”**

“AI can help teachers to do what they have to do”

**“KEY = AI + HI”**

# SURVIVE AND THRIVE

How we think about learning  
and what it means

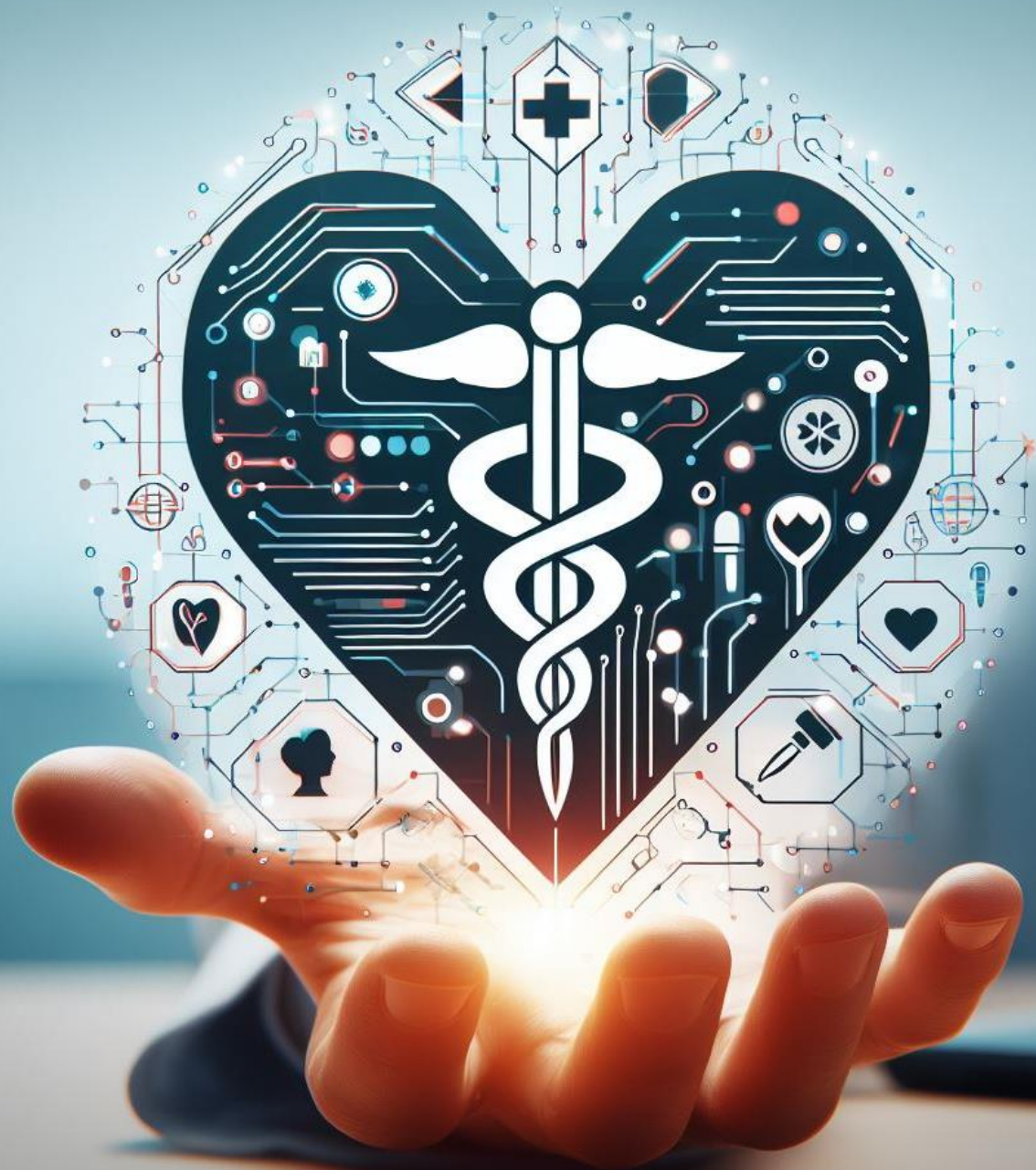






# ¿HOW TO APPROACH?

WORKSHOP - ENPHE CONFERENCE 2023



## HOW TO APPROACH

### Embrace:

- ✓ Productivity for teachers (Heavy lifting).
- ✓ Advisory and orientation (Student learning needs):
  - Online tutoring, facilitate learning.

### Innovation with ethics:

- ✓ AI or any other technology won't take the place of teachers, but **it will change the way we teach:**
  - Tools change.
  - What we evaluate changes (need to assess the process).

## HOW TO APPROACH

**We need, as educators, to set our own rules.  
We need Guidance.**

“We don’t necessarily have the answers, but we need to have a curated set of resources for faculty to look at. We need to make sure that our students have a sense of how AI could be relevant for the course”.

**LINK TO AI TOOL KIT**



# GENERATIVE AI HANDS ON!

READ-THINK-VERIFY-SHARE

**READY - FIRE - AIM**



**Wifi: Kampus**  
**Password: Hybernska**



# PRODUCTIVITY!

WORKSHOP - ENPHE CONFERENCE 2023



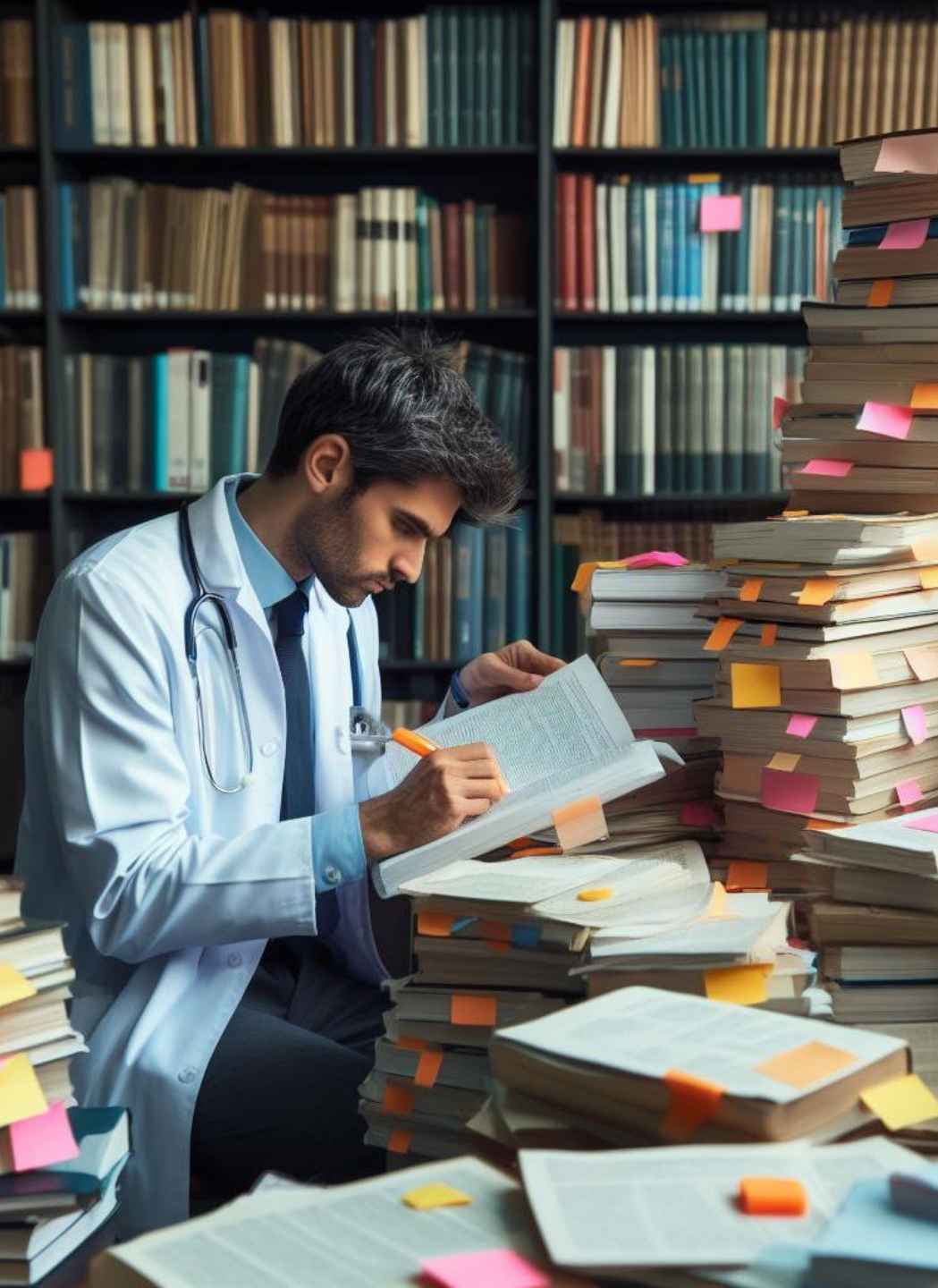


**Gamma**

**Scribe**







# **SEARCH FOR CLINICAL EVIDENCE!**

**WORKSHOP - ENPHE CONFERENCE 2023**



# Chat with abstracts

Ask any question about clinical evidence to all of PubMed's abstracts.

[HOW DOES IT WORK?](#)

[SEARCH 🔍](#)

# AI Based Search for Medical Evidence

Ev**i**dence**H**unt

VS

Pub**l**Med

AI Based Search

Manual Search

1. Takes a Question

2. AI Finds 100s of Papers

4. Identifies Top Papers

3. Ranks by Relevance

5. Answer with references

## Question:

'How effective is PrimaVie Shilajit?'

## Answer:

According to a study, 8 weeks of PrimaVie Shilajit supplementation at 500mg/d led to significantly less reduction in maximum voluntary isokinetic contraction (MVIC) compared to placebo and lower dose groups in the upper 50th percentile group. In addition, the adjusted mean post-supplementation (pmid: 30728074) are significantly higher in the high dose groups. (pmid: 30728074) Another study showed that purified Shilajit significantly

Login form



email



password

LOGIN

[Register](#) if you don't have an account.

Or [reset](#) if you forgot your password.



# Evidence-Based Answers, **Faster**

Consensus is a search engine that uses AI to find insights in research papers

Ask a research question...



Does creatine help build muscle?

Can mindfulness improve sleep?

Do direct cash transfers reduce poverty?



**CONNECTED  
PAPERS**

# Explore connected papers in a visual graph

To start, enter a paper identifier

Search by keywords, paper title, DOI or another identifier

Build a graph

You can try:



Paper DOI



arXiv  
Paper URL



Paper Title



Semantic Scholar  
Paper URL



PubMed  
Paper URL

# ASK YOUR SCIENTIFIC ARTICLES!

WORKSHOP - ENPHE CONFERENCE 2023



## Tools

[Literature Review](#)[Copilot - Read with AI](#)[Citation generator](#)[Paraphraser](#)[AI Detector](#)[Chrome Extension !\[\]\(3cb60d42b10e53f9522bb0b392c1c4cd\_img.jpg\)](#)

# Do hours worth of reading in minutes

[TRY NEW AI SEARCH ✨](#)

Try asking or searching for:

- [How does climate change impact biodiversity?](#)
- [Why are aging Covid patients more susceptible to severe complications?](#)
- [How does social media affect the college selection process?](#)
- [What are the interesting theories about dark matter and dark energy?](#)
- [What is the significance of higher-dimensional algebra?](#)



# Asking is faster than skimming

Chat your way through long documents. Command our AI to summarize for you. **Try for free** →

The screenshot displays the Humata application interface. At the top left is the Humata logo. Below it is a search bar labeled "Ask Humata". A chat history entry shows a user asking "how do I create an iN cell?". The chat response provides a detailed summary of the process, mentioning transcription factors Ascl1, Brn2, and Myt1l, and the use of mouse embryonic fibroblasts (MEFs) and retroviruses. The response includes citation markers [41], [5], and [3]. To the right of the chat is a document preview window showing a scientific manuscript. The document title is "HHMI Author Manuscript" and the author is "Vierbuchen et al.". The page number is "Page 5". The document text describes the process of creating induced neuronal (iN) cells and their synaptic integration into preexisting neural networks. It mentions the use of FACS to purify TauEGFP-positive iN cells and the observation of spontaneous and rhythmic network activity. The text also discusses the effects of electrical stimulation, picrotoxin, and AMPA/NMDA receptor channel blockers on the iN cells.







# **CLINICAL SUPPORT!**

**WORKSHOP - ENPHE CONFERENCE 2023**



## Enter Patient Summary

Include age, sex, relevant past medical history, medications, presenting symptoms, associated symptoms, descriptions of relevant studies (including labs and imaging), the illness course and any addition information you might include when consulting another physician about your patient.

### Examples

#### CLINICAL PROBLEM REPRESENTATION

chest pain with hyperacute T waves +

subacute progressive dyspnea +

confusion and disorientation +

chest pain with ST segment elevation +

#### HISTORY AND PHYSICAL

paresthesia +

Patient Summary

Draft Differential Diagnosis



Draft Clinical Plan





Enter a brief patient's description and DxGPT will provide a list of possible disease diagnoses.

DxGPT searches in rare diseases, to expand the search to common diseases, activate this button:

See common diseases

Type here!

For best results, indicate when and why you think the symptoms appeared.

Search



# CHAT BOTS!

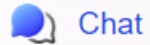
**WORKSHOP - ENPHE CONFERENCE 2023**



**BING CHAT**



## Bing is your AI-powered copilot for the web



Chat

What's the next trend in fashion and where should I shop to find it?



Organize

Create a table that helps me plan meals for the next two weeks



Compare

What are the top three vehicles for a family of six on a budget?



Create

Create a slogan for a new social media platform that specializes in sarcasm



Shop

What's the best-reviewed coffee grinder?



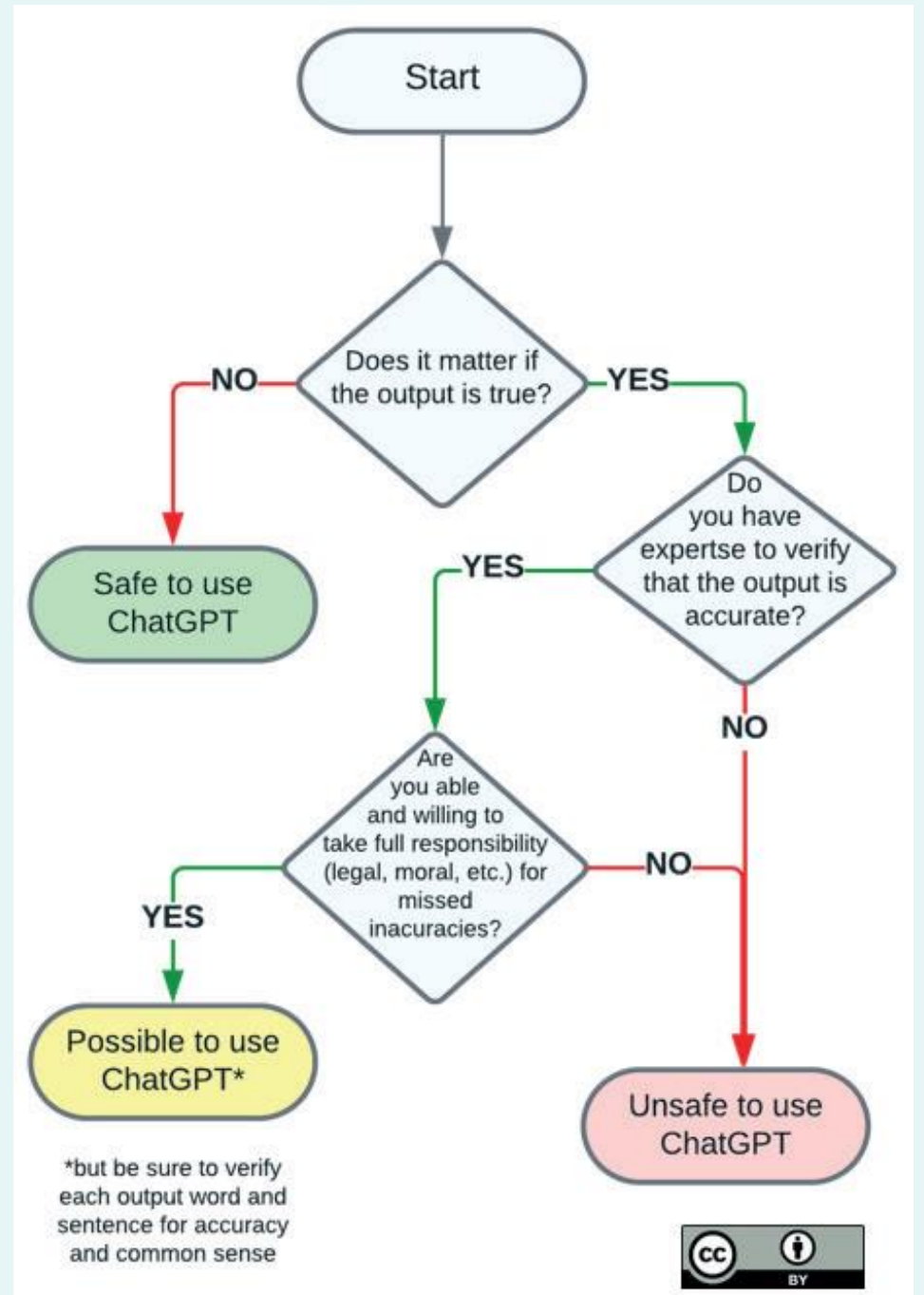
Laugh

Write a joke that my coworkers would find funny



Write

Write an original fable about a fish and a frog finding love



- **Be as specific as possible.**
- **Describe the settings and specify the context.**
- **Experiment with different prompt styles.**
- **Identify the overall goal of your prompt.**
- **Iterate and refine.**
- **Ask ChatGPT to play roles for you.**
- **Use the threads.**
- **Ask open questions.**
- **Request examples.**
- **Use time context wisely.**
- **Set realistic expectations.**

**Use it to expand your knowledge. It's a tool to support.**

# EXAMPLES OF USE IN HEALTH CARE

- **Verbal introduction in meetings on specific topics.**
- Assistance with writing code.
- New content creation.
- **Outpatient communication and creation of discharge notes.**
- Administrative texts, essay and text generation, ideation, and others.
- **Prepare presentations.**
- **Proofreading and help with writing/editing.**
- Marketing support.
- **Differential diagnosis.**
- Med device development; legal document interpretation.
- Compiling workshop feedback into summaries and quickly identifying common or reoccurring themes.





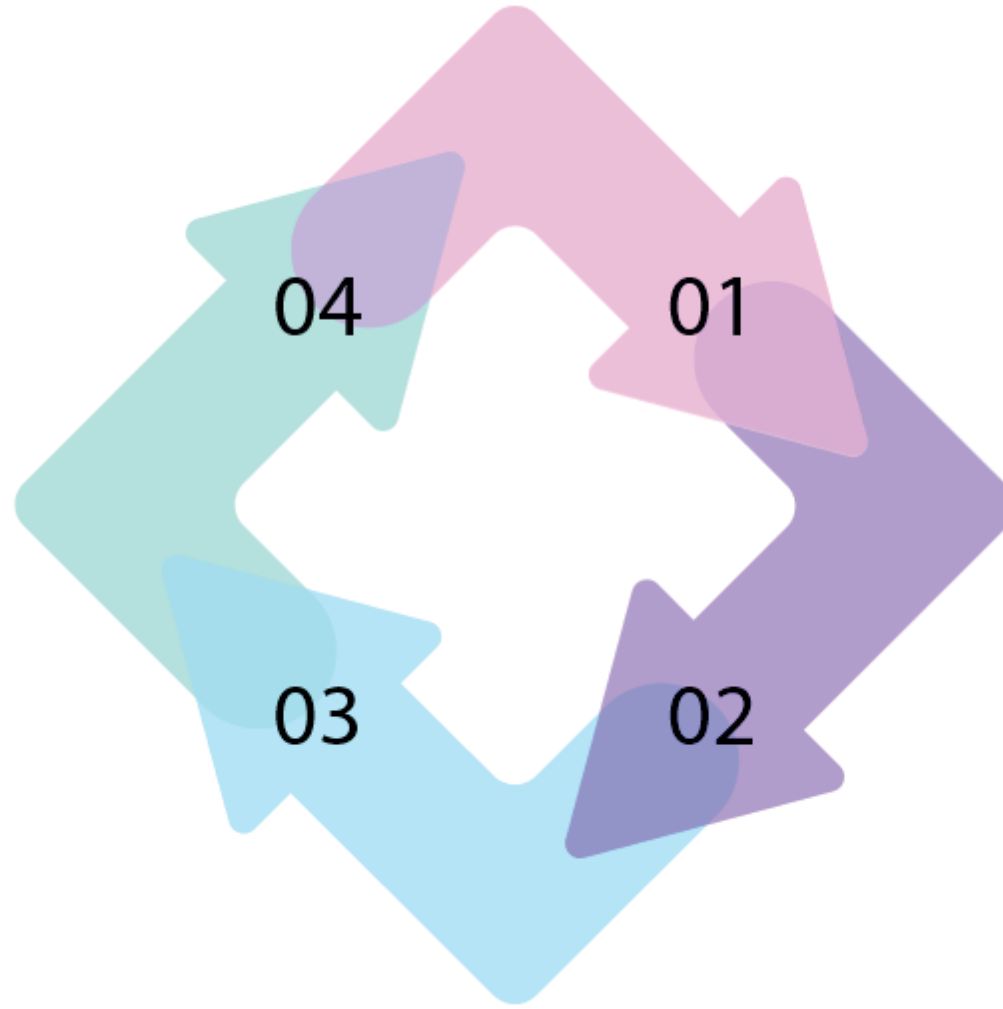
## ***Writing up***

- Improve writing quality
- Reformat citations and references
- Translate writing



## ***Data analysis***

- Code data
- Suggest themes or topics for analysis



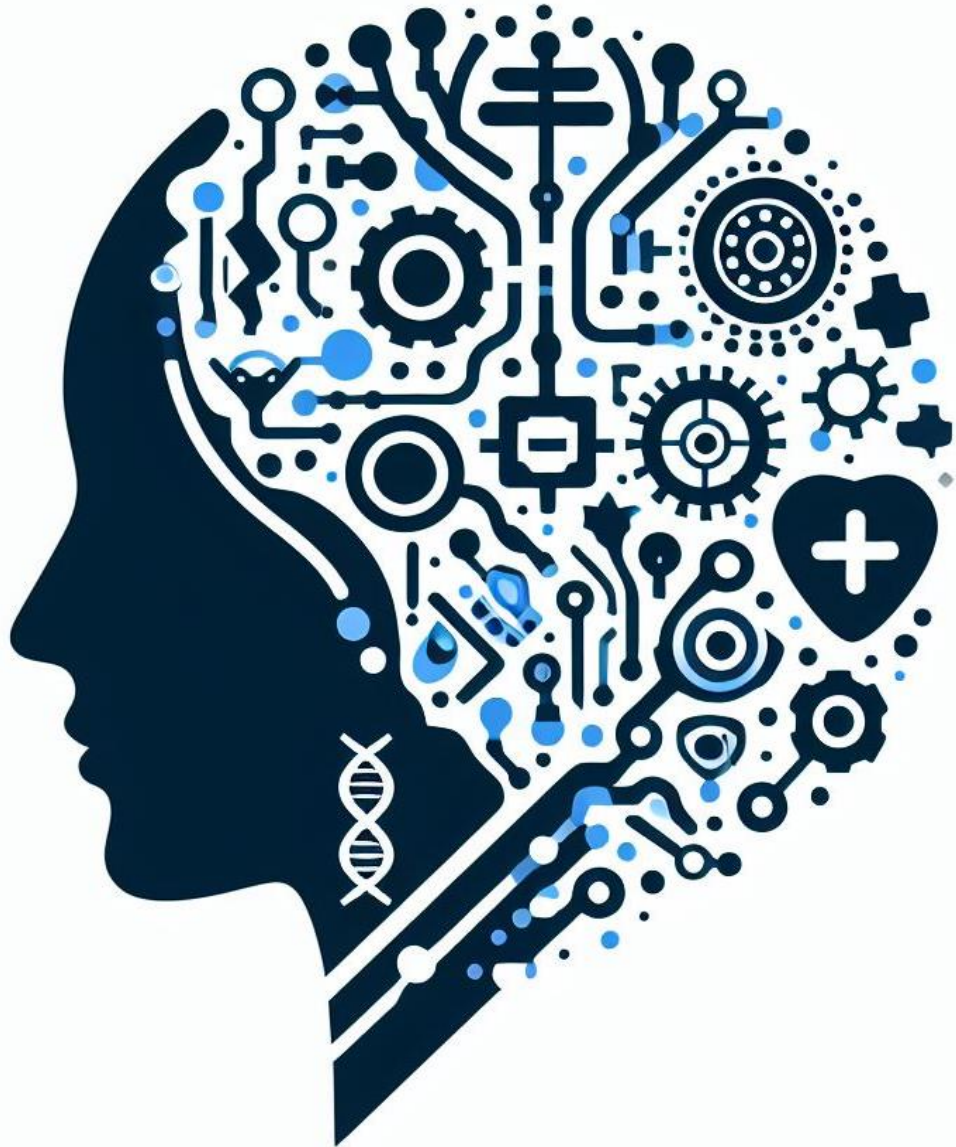
## ***Research design***

- Generate ideas for research questions or projects
- Suggest data sources



## ***Data collection***

- Search archives and datasets
- Translate sources into other languages



# Generative AI tools in Healthcare Education and Research

ENPHE CONFERENCE 2023 WORKSHOP



*Pedro Chana Valero*



*pchana@comillas.edu*