



Protein glycosylation and glycoinformatics for novel biomarker discovery in neurodegenerative diseases

Júlia Costa^{a,*}, Catherine Hayes^b, Frédérique Lisacek^{b,c,d}

^a Instituto de Tecnologia Química e Biológica António Xavier, Universidade Nova de Lisboa, 2780-157 Oeiras, Portugal

^b Proteome Informatics Group, Swiss Institute of Bioinformatics, CH-1227 Geneva, Switzerland

^c Computer Science Department, University of Geneva, CH-1227 Geneva, Switzerland

^d Section of Biology, University of Geneva, CH-1211 Geneva, Switzerland

ARTICLE INFO

Keywords:

Biomarker
Brain
Cerebrospinal fluid
Glycoinformatics
Neurodegeneration
Protein glycosylation

ABSTRACT

Glycosylation is a common post-translational modification of brain proteins including cell surface adhesion molecules, synaptic proteins, receptors and channels, as well as intracellular proteins, with implications in brain development and functions. Using advanced state-of-the-art glycomics and glycoproteomics technologies in conjunction with glycoinformatics resources, characteristic glycosylation profiles in brain tissues are increasingly reported in the literature and growing evidence shows deregulation of glycosylation in central nervous system disorders, including aging associated neurodegenerative diseases. Glycan signatures characteristic of brain tissue are also frequently described in cerebrospinal fluid due to its enrichment in brain-derived molecules. A detailed structural analysis of brain and cerebrospinal fluid glycans collected in publications in healthy and neurodegenerative conditions was undertaken and data was compiled to create a browsable dedicated set in the GlyConnect database of glycoproteins (<https://glyconnect.expasy.org/brain>). The shared molecular composition of cerebrospinal fluid with brain enhances the likelihood of novel glycoinformatic discovery for neurodegeneration, which may aid in unveiling disease mechanisms, therefore, providing with novel therapeutic targets as well as diagnostic and progression monitoring tools.

1. Introduction

The cell surface is covered with a layer of glycans associated with different glycoconjugates, including glycoproteins, designated as glycocalyx and those glycans play important roles in cell-cell, cell-matrix and cell pathogen interactions. Brain glycoproteins, including cell adhesion molecules from the plasma membrane, e.g., NCAM (Wuhrer et al., 2003) or L1CAM (Faissner et al., 1985) are heavily glycosylated and are crucial for cell differentiation and development in the central nervous system (CNS), for example, due to their importance in synaptic

connectivity (Sytnyk et al., 2021; Yuzaki, 2018), neuron differentiation (Gouveia et al., 2008), or neuron-astrocyte interactions (Tan and Eroglu, 2021). On the other hand, receptors, e.g., N-methyl-D-aspartate receptors (Sinitkiy et al., 2017) or transporters, e.g., glutamate transporters, EAAT1 and EAAT2 (Parkin et al., 2018) from the plasma membrane are in general heavily glycosylated, with glycans playing important roles in their regulation.

Glycosylation is a common post-translational modification of proteins with N- and O-glycosylation being the most studied types. Biosynthesis of N-glycans is initiated in the endoplasmic reticulum by

Abbreviations: 2-AB, 2-aminobenzamide; AD, Alzheimer's disease; APOE, apolipoprotein E; β -TP, β -trace protein; CDG, congenital disorder of glycosylation; CNS, central nervous system; CSF, cerebrospinal fluid; Ctr, control; cyt, cytoplasmic fraction; DLB, dementia with Lewy bodies; ELLA, Enzyme-linked lectin assay; FC, frontal cortex; FTD, frontotemporal degeneration; Fuc, fucose; Gal, galactose; GalNAc, N-acetylgalactosamine; Glc, glucose; GlcNAc, N-acetylglucosamine; HC, healthy control; Hex, hexose; HexNAc, N-acetylhexosamine; HNK-1, human natural killer-1; HS, hippocampal sclerosis; ILBD, Incidental Lewy body disease; LC-MS, liquid chromatography mass spectrometry; LP, lumbar puncture; MALDI-TOF MS, matrix-assisted laser desorption / ionisation time-of-flight mass spectrometry; iNPH, idiopathic normal pressure hydrocephalus; Man, mannose; MCI, mild cognitive impairment; MS, multiple sclerosis; NCI, no cognitive impairment; Neu5Ac, N-acetylneuraminic acid; Neu5Gc, N-glycolylneuraminic acid; NFL, neurofilament light chain; NI, neuroinflammation; HexA, hexuronic acid; PD, Parkinson's disease; PFC, prefrontal cortex; pNFH, phosphorylated neurofilament heavy chain protein; PSA, polysialic acid; PSP, progressive supranuclear palsy; SCI, subjective cognitive impairment; SCZ, schizophrenia; SN, substantia nigra; Tf, transferrin.

* Corresponding author.

E-mail address: jcosta@itqb.unl.pt (J. Costa).

<https://doi.org/10.1016/j.arr.2023.101991>

Received 31 March 2023; Received in revised form 25 May 2023; Accepted 18 June 2023

Available online 20 June 2023

1568-1637/© 2023 The Author(s). Published by Elsevier B.V. This is an open access article under the CC BY license (<http://creativecommons.org/licenses/by/4.0/>).

the en bloc transfer onto the nascent polypeptide chain of a precursor oligosaccharide, which is further processed in the endoplasmic reticulum and Golgi to produce the final glycan structures. Along the secretory pathway proteins may also be O-glycosylated, where glycans are covalently bound to hydroxyl groups - containing amino acids from the polypeptide chain; a common type of O-glycosylation consists of the binding of N-acetylgalactosamine (GalNAc) to Ser/Thr residues. On the other hand, a specific type of O-glycosylation with one N-acetylglucosamine (GlcNAc) residue is found in cytoplasmic and nuclear proteins.

Other glycoconjugates relevant in brain and brain disease but outside the scope of this review, are proteoglycans and glycolipids. Proteoglycans and their contribution in neurological diseases have been reviewed recently (Downs et al., 2022). Glycosphingolipids are very abundant in the brain where they play important roles, such as in myelination, and are related to neurological diseases such as multiple sclerosis or Alzheimer's disease (AD). This has also been reviewed in recent years (Alaamery et al., 2021; Giussani et al., 2021; Schnaar, 2016).

Cells and tissues show characteristic glycosylation profiles that reflect the set of expressed glycosyltransferases, glycosidases and sugar nucleotide transporters as well as their localization along the secretory pathway, substrate availability, metabolism and physiological conditions. One glycoprotein can exist as a set of glycoforms where the protein displays biosynthetically related, but distinct glycan structures on the same glycosylation site (microheterogeneity). Organs display specific glycosignatures (Otaki et al., 2022) and, particularly, brain has distinguishing glycosylation patterns (Sytnyk et al., 2021).

Due to the important role glycans play in glycoconjugate functions as well as cellular and organism homeostasis, mutations in genes coding for glycan biosynthesis are either lethal during embryonic development or

cause congenital disorders of glycosylation (Freeze et al., 2015; Reilly et al., 2019). Furthermore, changes in glycosylation have been described in diseases of the CNS, including neurodegenerative diseases, such as AD or Parkinson's disease (PD) (Balana and Pratt, 2021; Gaunitz et al., 2021b). The characterization of brain glycosylation patterns and specific glycan epitopes as well as their deregulation in disease will be useful for the understanding of disease etiopathogenesis, to provide disease biomarkers and therapy targets. To investigate molecular signatures as biomarkers in CNS diseases many studies have explored the cerebrospinal fluid (CSF) (Barba et al., 2022; Dreger et al., 2022; Khalil et al., 2018; Shaw et al., 2020; Swift et al., 2021) due to its proximity to the CNS.

In this review we focus on protein glycosylation of N- and O-glycoproteins of brain tissues in health and disease. Experimental strategies as well as glycoinformatic tools for protein glycosylation analysis are presented. Tools associated with the glycoprotein platform GlyConnect including the dataset dedicated to brain and CSF glycans are used in comparative studies. We further address human CSF glycosylation properties, particularly of CSF brain derived proteins, as ground for future development of biomarkers for neurodegenerative diseases associated with aging.

2. Glyco(proteo)mic methodologies and informatic tools for brain and CSF analysis

2.1. Structural diversity of N- and O-glycans

Major classes of mammalian glycans consist of N- and O-glycans. N-glycans are covalently linked to asparagine (Asn) residues located in

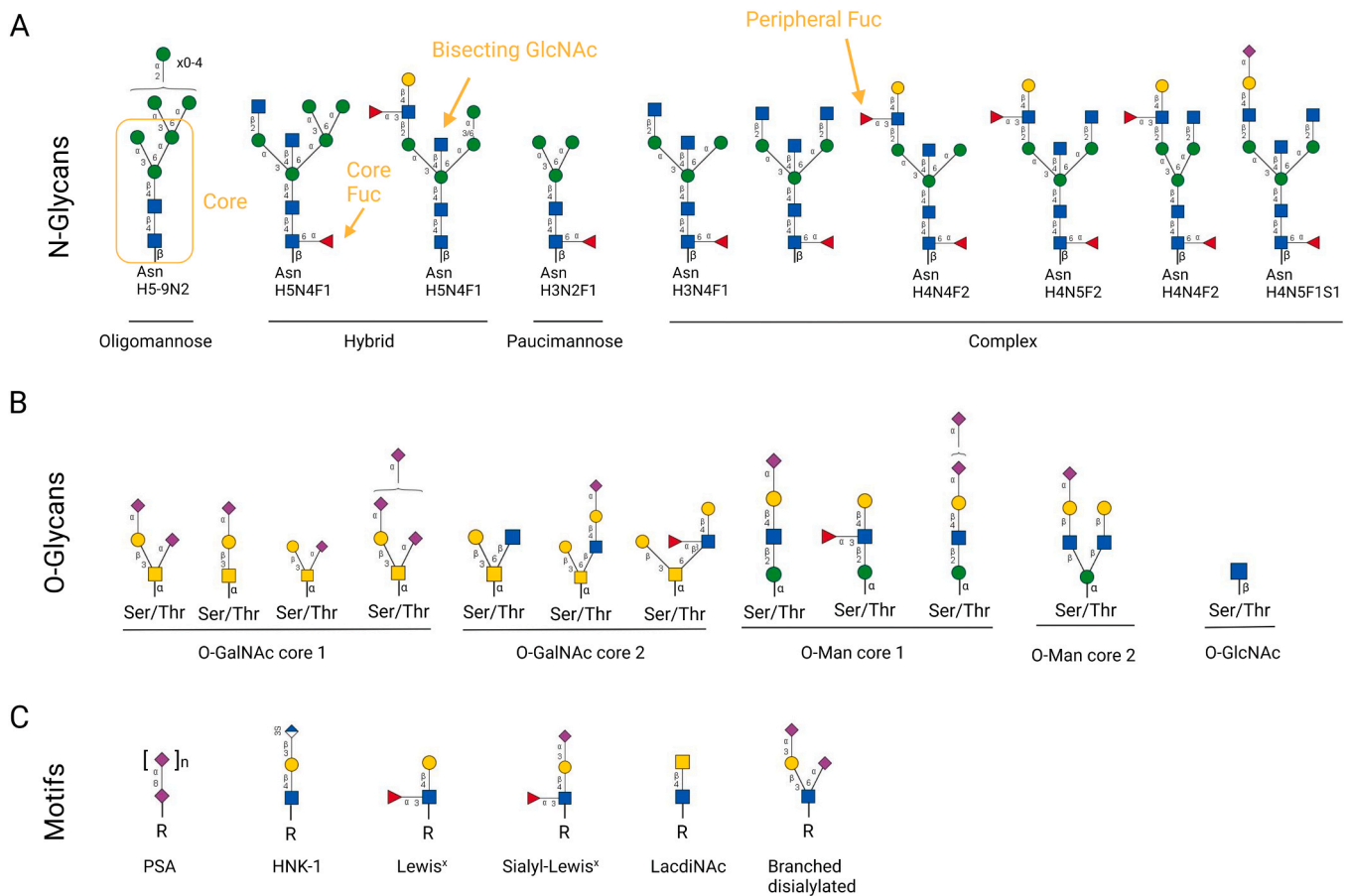


Fig. 1. Selected glycans detected in the brain and CSF. A, N-glycans. B, O-glycans. C. Motifs. Structures were extracted from Table 1 and Table 2 and references therein. Selection criteria included abundance, functional relevance and representation of different types. Nomenclature of glycans was according to SNFG. Composition abbreviation is as follows: H, hexose; N, HexNAc; F, Fuc; S, sialic acid. PSA, polysialic acid. Created with BioRender.com.

consensus sequence Asn-X-Ser/Thr of the polypeptide chain, thereby forming an amide bond with a GlcNAc. A common core, composed of two GlcNAc and three mannose (Man) residues (IUPAC: Man α 1–3 (Man α 1–6)Man β 1–4GlcNAc β 1–4GlcNAc β 1-Asn) is present in N-glycans, which is extended further to form three main categories designated as oligomannose, complex and hybrid (Fig. 1A). In each of these categories, several properties are used as distinctive features to group structures together. For example, in mammals, the addition of fucose (Fuc) on the core GlcNAc is described as *core fucosylation*, whereas branching Man of the core may be split with GlcNAc then called *bisecting GlcNAc*.

O-Glycans are bound to the hydroxyl group from the lateral chain of amino acid residues (Fig. 1B). A common type of O-glycosylation consists of the binding of GalNAc to Ser or Thr from the polypeptide chain forming the Tn antigen, which can be further elongated to form different cores numbered from 1 to 8 (Wang et al., 2021). GalNAc glycans are commonly found in high abundance on mucins and other glycoproteins on the surface of cells. Ser and Thr residues may also be modified by O-linked Man, which can be further elongated to form M1 to M3 cores (Larsen et al., 2019; Sheikh et al., 2017). Note that O-GlcNAcylation also acting on Ser or Thr residues (Fig. 1B) is a common post-translational modification of nuclear or cytoplasmic proteins (Fehl and Hanover, 2022).

Mammalian N- and O-glycans are elongated and branched through the addition of a variety of monosaccharide residues, including sialic acids (Neu5Ac and Neu5Gc as most common), Fuc, galactose (Gal), and GalNAc. Glycan diversity is even expanded with other modifications, e. g., sulfation or acetylation. Note that sialic acid is by far the most variable monosaccharide taking over one hundred forms (Lewis et al., 2023). In the end, masses can reach up to 4 or 5 kDa in the sub-category of tri- or tetra-antennary glycans. Another important characteristic feature of glycan structure is designated as *motif* that corresponds to previously identified ligands. Needless to say, blood groups are the most famous examples of such motifs. In addition, and particularly in the brain, polysialic acid (PSA), human natural killer-1 (HNK-1), Lewis^x, sialyl-Lewis^x and LacdiNAc have been observed (Fig. 1C).

2.2. Analytical strategies for brain and CSF glycoproteins

In view of the high structural complexity, advanced technologies and complementary approaches are required for glycan analysis.

Glycomics and glycoproteomics address the systematic characterization of protein glycosylation from proteins or cells, organisms and biofluids in specific physiological conditions. In glycomics glycan profiles are provided as well-defined structures with poor information on attachment sites, while in glycoproteomics structural resolution is poor (only compositions) but information on the specific amino acid site of attachment is precise. Concerning brain tissues and CSF, major analytical procedures that have been used in recent glyco(proteo)mic studies are summarized in Table 1 and Table 2, together with the major results obtained. A global diagrammatic representation of the major analytical workflow steps is presented in Fig. 2.

A crucial issue in determining the glycan profiles is sample extraction in view of the potential action of degradative enzymes, so ideally brain tissues should be homogenized on ice immediately after their collection or, if not possible, be snap-frozen in liquid nitrogen and conserved at – 80°C. Since the brain is highly enriched in lipids (O'Brien and Sampson, 1965), several extraction protocols involved a step of delipidation with chloroform/methanol mixtures (Klaric et al., 2021; Stalaker et al., 2011). Analytics of CSF are comparatively easier since it is a biofluid. Nevertheless, to assure molecule stability ideally CSF should also be conserved at – 80°C immediately after collection for subsequent storage. Detailed guidelines for CSF collection and storage aiming at biochemical characterization and biomarker identification have been published (Teunissen, 2009) and widely followed in studies aiming at biomarker identification from the CSF in CNS diseases, including, Alzheimer's disease (Massa et al., 2022), Parkinson's disease (Mackmull

et al., 2022), depression (Sorensen et al., 2022), amyotrophic lateral sclerosis (Otto et al., 2012).

For global analysis of glycosylation periodic acid-Schiff (PAS) staining is performed (Frenkel-Pinter et al., 2017). On the other hand, to detect specific glycan epitopes lectin blotting or lectin arrays are applied (Fang et al., 2020; Frenkel-Pinter et al., 2017; Kizuka et al., 2015; Murrey et al., 2009; Nakano et al., 2019; Williams et al., 2022). When aiming at detailed structural analysis in N-glycomics studies, N-glycans are released enzymatically from brain or CSF glycoproteins/glycopeptides using peptide N-glycosidase F, whereas in O-glycomics studies, O-glycans are released by β -elimination. In most studies glycans have been derivatized to facilitate their subsequent analysis either by permethylation for MS or fluorescent labelling for UPLC. For detailed structural elucidation, there are several approaches, including exoglycosidase digestion in combination with HILIC-UPLC and/or MS, and MS fragmentation analysis. For glycoproteomics studies, peptides are first obtained by protease digestion and glycopeptide enrichment is usually done to avoid signal suppression of glycopeptides due to the presence of other more abundant nonglycosylated peptides. Enrichment strategies may introduce bias into the results (see example below in Section 2.3, Fig. 3 A).

There are numerous LC-MS and MALDI MS approaches to the glyco (proteo)mic analysis that have been reviewed extensively (Chau et al., 2023; Kellman and Lewis, 2021; Lageveen-Kammeijer et al., 2022; Peng et al., 2022; Thaysen-Andersen et al., 2021). Many of these point at the same two main issues hindering fast progress in the field. First, is the still poor statistical validation of data analysis. In the past two decades, advances in proteomics and mass spectrometry analysis have led to a consensus regarding the calculation of a False Discovery Rate (FDR) that expresses confidence in protein identification. Solutions to this problem have very recently been proposed for glycopeptide identification in StrucGP (Shen et al., 2021) as well as version 3 of pGlyco (Zeng et al., 2021) though a consensus is not quite achieved, yet. Second, despite stronger recommendations for including metadata on both the sample preparation and MS analysis of the experiments in on-line repositories, published glyco(proteo)mic results often remain unnoticed. In contrast with the visibility and accessibility offered by current good practices in many -omics fields, e.g., transcriptomics data submitted to the GEO repository (<https://www.ncbi.nlm.nih.gov/geo/>) and proteomics data submitted to any of the ProteomeXchange associated repositories (<http://www.proteomexchange.org/>). Glycomics is still lagging behind despite budding initiatives such as GlycoPOST (Watanabe et al., 2021). A recent review of bioinformatics tools for glycomics (Rojas-Macias et al., 2019) also surveys some of the tools, with the prospect of implementing an automated pipeline for processing MS data. A major obstacle to automation remains the lack of standards and the poor reproducibility of results. This is tied up with the first issue mentioned in glycoproteomics that lacks a consensus definition of confidence. This situation is being monitored via community challenges that are efficient in assessing the strengths and weaknesses of the various tools (Kawahara et al., 2021).

2.3. Bioinformatic resources for glyco(proteo)mic analysis in brain and CSF

Glycoinformatics was first used to refer to [direct quote] “the informatics tools available for assessing ‘primary data’ (covalent and three-dimensional structures of glycans and glycoconjugates) and organizing these primary data into databases that can be used for speeding up the production of primary data, predicting new features and characterizing structure/activity or structure/function relationships” (Perez and Mulloy, 2005). In relation to the wider field of bioinformatics, glycoinformatics puts an emphasis on carbohydrate-related proteins and genes (Aoki-Kinoshita et al., 2021).

For efficacy, bioinformatics tools need well populated, current, maintained and quality datasets, and ideally the data should adhere to

Table 1
Selected glyco(proteo)mics studies from brain tissues of human, mouse and rat.

Species / Disease	Tissue	Glycosylation analysis	Major / significant structures	Variation in disease	Reference (GlyConnect)
<ul style="list-style-type: none"> Human • Ctr (14), MCI (14), AD (15) 	<ul style="list-style-type: none"> FC, hippocampus, parietal lobe, temporal lobe 	<ul style="list-style-type: none"> quantitative PAS staining, ELISA (O-GlcNAc) 	<ul style="list-style-type: none"> Total glycans • O-GlcNAc 	AD: <ul style="list-style-type: none"> • ↓ O-GlcNAc, cyt, frontal lobe, ↑ O-GlcNAc, cyt, Hipp, ↑ 2.3-fold glycan than HC (soluble fraction, FC) 	(Frenkel-Pinter et al., 2017)
<ul style="list-style-type: none"> Human • Mouse 	<ul style="list-style-type: none"> Mouse: PFC, striatum, hippocampus, olfactory bulb, diencephalon, midbrain, pons-medulla, cerebellum Human: dorsolateral PFC hippocampus, frontal cortex 	<ul style="list-style-type: none"> N-Glycomics • PNGase F, nano-LC-MS, CID MS/MS 	<i>Membrane N-glycans from mouse:</i> <ul style="list-style-type: none"> • mainly oligomannose and complex-hybrid types with Fuc, NeuAc and HexA; high levels of fucosylation; NeuGc not detected; minor human specific structures 	-	(Lee et al., 2020b) (ID 3005)
<ul style="list-style-type: none"> Human • AD (5), Ctr (5) 	<ul style="list-style-type: none"> hippocampus, frontal cortex 	<ul style="list-style-type: none"> N-Glycomics • PNGase F, 2-anthranilic acid labeling, LC-MS/MS • GlycoWorkBench 	<ul style="list-style-type: none"> high fucosylation, low sialylation, high oligomannose • abundant forms in FC / Hipp: H4N5F2, H5N2, H3N5F1, H4N5F2S1 	AD: <ul style="list-style-type: none"> • altered N-glycans FC / Hipp • FC, HP: ↓ H4N5F2S1 • FC: ↑ H5N4F1S1 • Hipp: ↓ H5N5F1S1 (bisected GlcNAc) 	(Gaunitz et al., 2021a)
<ul style="list-style-type: none"> Human • PD (12), ILBD (3), HC (18) 	<ul style="list-style-type: none"> Striatum, SN 	<ul style="list-style-type: none"> O-Glycomics • β-Elimination, 2-AB labeling, FLR-WAX-UPLC, FLR-HILIC-UPLC, FLR-HILIC-UPLC-MS, PGC-LCESI-Msn, exoglycosidase digestion 	<ul style="list-style-type: none"> high O-GalNAc core glycans (Galβ1-3GalNAc, Galα1-3GalNAc), sulfated disialyl T-antigen, O-Man core structures, α2-3/6 linked sialic acid on β3 and β4 Gal structures, sulfohexuronylated structures 	ILBD: <ul style="list-style-type: none"> • ↓ mannose-core and glucuronylated structures (striatum) PD: <ul style="list-style-type: none"> • ↑ sialylation (SN, striatum), ↓ sulfation (striatum) 	(Wilkinson et al., 2021) (ID 2991)
<ul style="list-style-type: none"> Human • Mouse • Pig 	<ul style="list-style-type: none"> Brain 	<ul style="list-style-type: none"> N-Glycomics • PNGase F/A, PGC-LC-ESI-CID-MS/MS 	<ul style="list-style-type: none"> majority: bisected glycans • bisecting LacNAc, bisecting Lewis^x 	-	(Helm et al., 2021)
<ul style="list-style-type: none"> Human • Pig 	<ul style="list-style-type: none"> Brain 	<ul style="list-style-type: none"> N-Glycomics • PNGase F/A, PGC-LC-ESI-CID-MS/MS 	<ul style="list-style-type: none"> hybrid, complex and oligomannose, bisected glycans, bisecting LacNAc and Lewis^x, Lewis^x, HNK-1, LacdiNAc and LNDF 	-	(Helm et al., 2022)
<ul style="list-style-type: none"> Human • AD (2), NCI (1), HS (1) 	<ul style="list-style-type: none"> Cortex (various regions), posterior hippocampus, thalamus, caudate nucleus, pons 	<ul style="list-style-type: none"> N-Glyco(proteo)mics • PNGase F, trypsin, HILIC glycopeptide enrichment, LC-MS/MS • Byonic 	<i>Membrane fraction:</i> <ul style="list-style-type: none"> • sialofucosylated (most common), oligomannose, sialylated and fucosylated glycans 	AD: <ul style="list-style-type: none"> • distinct glycomic and glycoproteomic profiles 	(Tena et al., 2022)
<ul style="list-style-type: none"> Human • AD/no CI (10), AD+CI (10), NCI/no AD (10) 	<ul style="list-style-type: none"> Brain 	<ul style="list-style-type: none"> N-Glycoproteomics • multi-lectin GP enrichment, trypsin, HILIC glycopeptide enrichment, LC-MS/MS analysis • Byonic, GlyGen 	<ul style="list-style-type: none"> high oligomannose glycans • extensive fucosylation and bisection • low galactosylation • very low sialylation 	AD: <ul style="list-style-type: none"> • differences among groups at individual site level (changes in frequency of bisection, fucosylation, galactosylation, and the number of antennae) 	(Suttapitugsakul et al., 2022)
<ul style="list-style-type: none"> Mouse 	<ul style="list-style-type: none"> Brain 	<ul style="list-style-type: none"> N-Glycomics • PNGase F, permethylation, C18-RPLC-MS/MS, PGC-LC-MS/MS • GlySeeker 	<ul style="list-style-type: none"> complex hybrid, and oligomannose N-glycans, with Fuc or Fuc + sialic acid 	-	(Shen et al., 2019)
<ul style="list-style-type: none"> Mouse 	<ul style="list-style-type: none"> Brain 	<ul style="list-style-type: none"> N-Glycoproteomics • trypsin, Con A glycopeptide enrichment, PNGase F, LC-MS/MS • Byonic 	<ul style="list-style-type: none"> > 50% of glycosites with oligomannose • fucosylated glycans slightly below 30% • ~10% sialylated glycans 	-	(Riley et al., 2019) (ID2913)
<ul style="list-style-type: none"> Mouse AD (APP/PS1) 	<ul style="list-style-type: none"> Brain 	<ul style="list-style-type: none"> N-Glycoproteomics • trypsin, ZIC-HILIC glycopeptide enrichment, PNGase F, LC-MS/MS, lectin microarrays and blotting • GlycomeDB 	<ul style="list-style-type: none"> highly frequent oligomannose and fucosylated complex glycans 	AD mouse model: <ul style="list-style-type: none"> • ↓ levels fucosylated and oligomannose glycans • slightly longer lengths of N-glycans 	(Fang et al., 2020)
<ul style="list-style-type: none"> Mouse 	<ul style="list-style-type: none"> Forebrain, hindbrain, cortex, hippocampus, cerebellum 	<ul style="list-style-type: none"> N-Glycomics • PNGase F, nanoLC/ESI-Q-TOF MS/MS 	<i>Cortex membrane N-glycans:</i> <ul style="list-style-type: none"> • fucosylated (~50%), high-mannose (~22%), sialofucosylated (~18%), sialylated (1%) 	-	(Barboza et al., 2021)
<ul style="list-style-type: none"> Mouse 	<ul style="list-style-type: none"> Cortex, hippocampus, striatum, cerebellum 	<ul style="list-style-type: none"> N- and O-Glycomics • trypsin, PNGase F / Endo H for N-glycans, β-elimination for O-glycans, permethylation, MALDI-TOF-MS/MS, lectin blotting • GlycoWorkbench, GlycoGlyph 	<ul style="list-style-type: none"> Cortex N-glycans: paucimannose (3.1%), oligomannose (62.6%), mono- (19.0%), bi- (13.6%), tri- (1.7%) and tetra-antennary (0.14%), hybrid (5.5%), bisected (30.3%), fucose (34.7%), Neu5Ac (1.9%) • Cortex O-glycans: O-GalNAc (higher) and O-Man, extensive sialylation NeuAc/NeuGc 	-	(Williams et al., 2022) (ID 3003)

(continued on next page)

Table 1 (continued)

Species / Disease	Tissue	Glycosylation analysis	Major / significant structures	Variation in disease	Reference (GlyConnect)
• Mouse (SLC39A8 A391)	• Frontal cortex, hippocampus, striatum, cerebellum	• N- and O-Glycomics • PNGase F, F-MAPA, sialic acid quantification, LC-MS/MS	• <i>Cortex N-glycans</i> : paucimannose (3.1%), oligomannose (63%), mono- (19%), bi- (13.5%), tri- (1.4% and tetra-antennary (0.09%), hybrid (4.8%), bisected (30%), fucose (35%), sialic acid (1.6%)	Mouse model: <i>Cortex</i> : ↓ total N-glycans, ↓ oligomannose, ↑ complex tri- and tetraantennary (3), ↑ sialic acid in N-glycans, ↑ O-Man / O-GalNAc glycans <i>Cerebellum</i> : ↓ sialic acid in N-glycans	(Mealer et al., 2022)
• Mouse	• Brain	• N-Glycomics • PNGase F, BlotGlyco® H beads, WR-labeling, MALDI-TOF MS • GlycoMod	• bisected glycoforms with Fuc (e.g., H3N5F1, H4N5F2, H4N5F2, H5N5F3), oligomannose, complex, hybrid, paucimannose, low sialic acid, high fucosylation	-	(Otaki et al., 2022)
• Rat	• Brain striatum and substantia nigra	• N-Glycomics • PNGase F, 2-AB, HILIC-UPLC, LC-MS, WAX-UPLC, exoglycosidases, lectins • GlycoStore	• oligomannose and fucosylated complex type most abundant in striatum and SN • glycans from all biosynthetic classes detected	-	(Samal et al., 2020)
• Rat	• Brain neocortex	• N-Glycomics • PNGase F, procainamide labelling, HILIC UPLC/ESI/QTOF/MS+ • GlycoMod, GlycoStore database, GlycoWorkbench	<i>Adult</i> : • oligomannose (22.8%), neutral complex (40.5%), charged complex (16.2%), truncated (12%), hybrid (5.7%), paucimannose (2.9%), putative phosphorylated glycans, putative sulfated glycans, HNK-1, lactosamine repeats	-	(Klaric et al., 2021) (ID 2994)
• Rat	• Brain without cerebellum synaptosomes	• N-Glyco(proteo)mics • PNGase F, PGC-LC-MS/MS, TiO2 glycopeptide enrichment, nanoLC-MS/MS • Glycomod, GlycoWorkbench, Byonic, GPMW	• paucimannose (6%), oligomannose (54%), neutral hybrid (10%), sialylated hybrid (3%), neutral complex (23%), sialylated complex (4%), bisecting GlcNAc, core fucosylation, peripheral fucosylation	-	(Matthies et al., 2021) (ID 2995)
• Rat • NI	• Brain striatum	• N-Glycomics • PNGase F, 2-AB labelling, HILIC-UPLC, MALDI MSI	• oligomannose, complex and hybrid biosynthetic classes	NI: • ↓ sialylation, ↓ core and peripheral fucosylation, ↑ oligomannose, ↑ bisected N-glycans	(Rebello et al., 2021)

FAIR principles (Wilkinson et al., 2016): findability, accessibility, interoperability, and reusability. This applies not only to the data but also to the algorithms, tools and workflows that led to the data. FAIR principles should be applied to both human-driven and machine-driven activities. At a time when machine learning and data mining strategies have become common practice in bioinformatics, it is necessary to prepare the ground for glycoinformatics (Bojar and Lisacek, 2022). To ensure the implementation of the FAIR principles, reporting experimental glycomics metadata in a unified manner is essential, as pointed out earlier. This question is being addressed by the gradual development of the MIRAGE guidelines (York et al., 2014).

Recently, there has been an increase in interest in brain glycosylation especially in different disease states. A few tools are routinely used in the field. A frequently used software in a glycomics / glycoproteomics workflow remains GlycoWorkBench (Damerell et al., 2015) and its associated drawing module (available as a standalone tool), GlycanBuilder (Damerell et al., 2012). Developed as part of a larger glycoinformatics project (von der Lieth et al., 2011), GlycoWorkBench was specifically designed for mass spectrometry-based glycomics analysis and has been used in brain as well as CSF studies, to assign glycan compositions from MS spectra as well as the possible fragment ions generated by tandem MS experiments (Table 1, Table 2) (Bleckmann et al., 2009b; Costa et al., 2019; Fogli et al., 2012; Gaunitz et al., 2021a; Goncalves et al., 2015; Goyallon et al., 2015; Palmigiano et al., 2016; Williams et al., 2022). It is also commonly used to generate cartoons that adhere to the Symbol Nomenclature for Glycan Structure (SNFG) format (Neelamegham et al., 2019) for inclusion in publications irrespective of the experimental technique used (Klaric et al., 2021; Matthies et al., 2021). Another module of GlycoWorkBench that has been used in glycomics analysis is Glyco-peakfinder (Maass et al., 2007) specifically for

mass spectrometry peak analysis. It can be used to aid the calculation of glycan compositions and to evaluate spectra resulting from glycomics experiments (Bleckmann et al., 2009a; Bleckmann et al., 2009b).

As MS is one of the most used analytical techniques, the informatic tools are varied and often quite project-specific. For example, Xiao et al. (Xiao et al., 2018) developed an N-glycan database search engine, GlySeeker, that allows for large scale analysis of glycans. It was subsequently used to analyse mouse brain (Shen et al., 2019). In glycoproteomics, processing may involve different tools (Chau et al., 2023). For example, Fang et al. (Fang et al., 2020) identified non-glycosylated peptides and de-glycosylated peptides using classic proteomics data analysis tools including Proteome Discoverer (Orsburn, 2021), Mascot (Chen et al., 2019), along with a targeted mouse dataset extracted from UniProt/SwissProt (Poux et al., 2017), and the Scaffold validation software (Proteome Software, Inc., Portland, OR; version 4.4.6). Then, the identification of site-specific glycopeptides was performed with pGlyco 2.0 (Liu et al., 2004) and data from GlycomeDB (Ranzinger and York, 2015), now fully included in the universal Gly-TouCan glycan structure repository (Fujita et al., 2021). GlyTouCan (https://glytoucan.org), the international glycan repository is a key resource in glycoinformatics; it includes non-curated glycan structures identified by unique accession numbers (Fujita et al., 2021).

Another commonly reported tool in glycoproteomics studies is the Protein Metrics proprietary software Byonic (Bern et al., 2012) adapted from proteomics data analysis; it has an inbuilt limited dictionary of available compositions to identify glycosylation modifications on peptides but it may also use a user-defined dictionary. Matthies et al. (Matthies et al., 2021) used such a list of glycan compositions, generated by the glycomics part of the study to search for matching glycopeptides. As an orthogonal technique for the identification of glycopeptides, those

Table 2
Selected glyco(proteo)mics studies in human CSF.

Disease (N)	Glycosylation analysis	Detected structures	Variation in disease	Reference (GlyConnect)
• Ctr (without infection)	<ul style="list-style-type: none"> • N- and O-Glycoproteomics • sialylated glycoproteins, trypsin, LC-MS/MS 	<ul style="list-style-type: none"> • various complex N-glycans • O-glycan: HexHexNAcα1-O-Ser/Thr 	-	(Nilsson et al., 2009) (ID 2859)
• Ctr (18), SCZ (14)	<ul style="list-style-type: none"> • N-Glycomics • 50 µl, • PNGase F, 2-AB labelling, NP-HPLC, exoglycosidases • GlycoBase 	<ul style="list-style-type: none"> • complex N-glycans of the bi- (predominant), tri- and tetraantennary type with high core fucosylation, truncated structures, bisecting GlcNAc, peripheral Fuc, oligomannose, hybrid <i>More abundant N-glycans (representative sample):</i> disialylated biantennary (16%), core fucosylated bisected biantennary without Gal (12.7%), monosialylated core fucosylated biantennary with two Gal (7.7%), monosialylated biantennary with two Gal (6.7%), core fucosylated bisected biantennary with two Gal (6.3%) 	<p>SCZ:</p> <ul style="list-style-type: none"> • ↓ overall bisected and sialylated • ↓ peak C3 (δ), ↓ peak C17, ↓ peak C18, ↓ peak C20 	(Stanta et al., 2010) (ID 3000)
• Ctr (17), leukodystrophies eIF2B mutated patients (12)	<ul style="list-style-type: none"> • N-Glycomics • 250 µl CSF • PNGase F, permethylation, MALDI-TOF MS • GlycoMod, Glycoworkbench 	<ul style="list-style-type: none"> • abundant complex biantennary N-glycans, high levels of fucosylation, truncated structures, tri/bisected, sialylated, oligomannose, hybrid 	<p>eIF2B patients:</p> <ul style="list-style-type: none"> • ↑ biantennary structures • ↓ triantennary / bisecting structures 	(Fogli et al., 2012)
• Ctr (19), iNPH (29), AD (19)	<ul style="list-style-type: none"> • Transferrin N-glycosylation • Tf-1, Tf-2 isoforms purification • PNGase F, pyridylamination, MALDI-TOF MS, MS/MS, antibody-overlay lectin microarray 	<p>Two transferrin isoforms:</p> <ul style="list-style-type: none"> • Tf-1: core fucosylated bisected biantennary N-glycan without Gal • Tf-2: sialylated biantennary N-glycan with two Gal 	<p>iNPH patients:</p> <ul style="list-style-type: none"> • higher Tf-2/Tf-1 ratio (in relation to AD and Ctr) 	(Futakawa et al., 2012)
• Healthy (without infection; 8)	<ul style="list-style-type: none"> • O-Glycoproteomics • 1 ml CSF • sialoglycoprotein enrichment, trypsin, LC-MS/MS 	<ul style="list-style-type: none"> • abundant core-1-like HexHexNAc-O-structure in several GPs, including APOE • core-2-like Hex(HexHexNAc)HexNAc-O-structure in APOE 	-	(Halim et al., 2013) (ID 2844)
• Ctr (17), ALS (29)	<ul style="list-style-type: none"> • N-Glycomics • 75 µl CSF • trypsin, PNGase F, 2-AB labelling, NP-HPLC, exoglycosidases, LC-MS/MS • GlycoMod, Glycoworkbench • Marker pNFH 	<ul style="list-style-type: none"> • complex glycans of the bi- (predominant) and triantennary type with extensive core fucosylation, truncated structures, bisecting GlcNAc, peripheral Fuc; oligomannose and hybrid glycans <i>More abundant N-glycans (ALS):</i> disialylated biantennary (21.8%), sialylated core fucosylated biantennary (11.8%), core fucosylated bisected biantennary without Gal (5.5%), monosialylated core fucosylated bisected biantennary with 2 Gal (5.3%), monosialylated biantennary with 2 Gal (5.1%) 	<p>ALS:</p> <ul style="list-style-type: none"> • ↑ peak 10 composed of 2 monosialylated biantennary glycans 	(Goncalves et al., 2015)
• Ctr HC, other non-inflammatory neurological disease (21), MS (27)	<ul style="list-style-type: none"> • IgG N-glycosylation • protein A affinity capturing, trypsin, MALDI Fourier transform ion cyclotron resonance MS 	<ul style="list-style-type: none"> • complex biantennary, partially bisected, high core fucosylation, many truncated structures 	<p>MS:</p> <ul style="list-style-type: none"> • ↑ bisecting GlcNAc • ↓ afucosylation and galactosylation 	(Wuhrer et al., 2015)
• Ctr (pool; no neurological disease)	<ul style="list-style-type: none"> • N-glyco(proteo)mics • 25 µl • PNGase F, permethylation, MALDI-TOF MS, LC-MS/MS, • trypsin+glycopeptide enrichment, nanoLC-MS/MS • GlycoWorkBench 	<ul style="list-style-type: none"> • predominant biantennary disialylated (~15% of total), two agalactodiantennary N-glycans with bisecting GlcNAc and core fucose (~12%), oligosialic acid • core fucosylated bisected biantennary without Gal detected in transferrin, β-TP, and kallikrein-6 	-	(Goyallon et al., 2015)
• Ctr (no inflammatory /autoimmune disease; 64), MS (68)	<ul style="list-style-type: none"> • IgG glycosylation • 450 µl • IgG affinity isolation, lectin (RCA-I and GSL-II) binding (ELISA plates) 	<ul style="list-style-type: none"> • GlcNAc- and Gal-containing glycans 	<p>MS:</p> <ul style="list-style-type: none"> • ↑ GSL-II/RCA-I ratio 	(Decker et al., 2016)
• Ctr (21), MCI (11), AD (24)	<ul style="list-style-type: none"> • N-Glycomics • 200 µl CSF • PNGase F, permethylation, MALDI-TOF MS, MS/MS • GlycoMod, Glycoworkbench 	<ul style="list-style-type: none"> • complex bi-, tri-, and tetraantennary N-glycans (with proximal and/or peripheral Fuc) some truncated, some bisected; hybrid and oligomannose structures • more abundant: disialylated biantennary 	<p>Subgroups of MCI and AD patients:</p> <ul style="list-style-type: none"> • ↓ disialylated biantennary • ↑ bisecting GlcNAc-containing N-glycans 	(Palmigiano et al., 2016) (ID 3002)
• Ctr (neurologically healthy; 2)	<ul style="list-style-type: none"> • N-Glycomics • 150 µl CSF • PNGase F, MALDI-TOF/TOF MS 	<ul style="list-style-type: none"> • presence of bisected glycans (e.g., H3N5F, H4N5F and H5N6F), and double-fucosylated species (e.g., H5N4F2 and H4N5F2) 	-	(Karlsson et al., 2017)
• Ctr (10), ALS (26)	<ul style="list-style-type: none"> • IgG N-Glycosylation • 300 µl CSF • Protein G HP SpinTrap, PNGase F, 2-AB labelling, NP-HPLC, exoglycosidases, MALDI-TOF MS 	<ul style="list-style-type: none"> • biantennary N-glycans predominantly core fucosylated, partially bisected; agalacto-, mono- (predominant), and digalactosylated structures, α2,6-Neu5Ac <i>More abundant IgG N-glycans (ALS):</i> core fucosylated biantennary without Gal 	<p>ALS:</p> <ul style="list-style-type: none"> • ↑ Galactosylated structures (Gal-index) 	(Costa et al., 2019) (ID 2999)

(continued on next page)

Table 2 (continued)

Disease (N)	Glycosylation analysis	Detected structures	Variation in disease	Reference (GlyConnect)
• Ctr (4 ♀, 4 ♂), AD (4♀, 4♂)	<ul style="list-style-type: none"> • GlycoWorkbench • Marker: pNFH 	(20.95%), core fucosylated bisected biantennary without Gal (8.57%), core fucosylated biantennary with one Gal (6-arm) (16.05%), core fucosylated biantennary with one Gal (3-arm) (9.33%), core fucosylated biantennary with two Gal (11.38%)	AD: <ul style="list-style-type: none"> • ↑ fucosylated and bisecting GlcNAc structures (♀) • ↓ oligomannose 	(Cho et al., 2019)
• Ctr (31), MCI (25), AD (27) • ELLA study: SCI (70), MCI (72), or AD (100) patients	<ul style="list-style-type: none"> • N-Glycomics • 50 µl CSF • PNGase F, LC-MS 	<ul style="list-style-type: none"> • di-, tri-, tetraantennary complex, asialo, agalacto-structures, core Fuc, bisecting GlcNAc, oligomannose and hybrid glycans 	AD: <ul style="list-style-type: none"> • ↑ bisecting N-glycans relatively to Ctr and MCI • ↑ increase of Lewis^x in AD but heterogeneous 	(Schedin-Weiss et al., 2020) (ID 2998)
• Ctr (16), AD (16)	<ul style="list-style-type: none"> • N-Glycoproteomics • 1 ml CSF (pool) • trypsin, glycopeptide enrichment, LC-MS/MS • Byonic 	<ul style="list-style-type: none"> • complex/hybrid, fucosylated, sialylated and paucimannosidic glycans • abundant fucosylated and sialylated glycoforms 	AD: <ul style="list-style-type: none"> • altered glycosylation patterns for several N-glycoproteins (e.g., α1-antichymotrypsin, ephrin-A3, carnosinase CN1) • trend ↓ fucosylation 	(Chen et al., 2021b)
• Ctr (16), MCI (16), AD (16)	<ul style="list-style-type: none"> • O-Glycoproteomics • 1 ml CSF (pool) • trypsin, PNGase F (to remove N-glycans), boronic acid enrichment, LC-MS/MS • Byonic 	<ul style="list-style-type: none"> • core 1 glycoforms (48.3%) largely sialylated (72.9%) • fucosylated O-glycoforms (29.1%) • endogenous peptides mostly O-glycosylated (sialylated and non-sialylated T-antigen, and Tn antigen) 	AD: <ul style="list-style-type: none"> • O-glycoproteins: trend ↓ fucosylation with progression • endogenous peptides: trend ↑ O-glycosylation 	(Chen et al., 2021a)
• unruptured aneurysm, trigeminal neuralgia and facial spasm (pool), iNPH (52), MCI (42), AD (61), PSP (7), FTD (10), DLB (9), PD (34)	<ul style="list-style-type: none"> • Transferrin N-glycosylation • Transferrin purification • PNGase F, Glycoworks RapiFluor-MS, UPLC, MS/MS, MALDI/TOF MS, lectin blotting, anti-Tf antibody/rBC2L-A lectin-sandwich ELISA. • Marker: A 40, A 42, p-tau, tau 	<ul style="list-style-type: none"> • disialylated biantennary (70.0%) • GlcNAc-terminated glycans (19.8%) • Man5GlcNAc2 (7.8%) 	AD and MCI: <ul style="list-style-type: none"> • ↑ Man-Tf (isoform with terminal Man) • correlation of Man-Tf with p-Tau 	(Hoshi et al., 2021)
• morphine (5), baclofen (3)	<ul style="list-style-type: none"> • Multiglycomics • 30 µg CSF protein • CSF protein immobilization on PVDF, PSA quantitation, GAG disaccharide quantitation, PNGase F, β-elimination, PGC-LC-MS/MS • GlycoPOST 	N-glycans: <ul style="list-style-type: none"> • sialylated (~50%), highly branched glycans (6%-12%), bisecting GlcNAc (6-12%), Lewis epitopes (2-5%), LacdiNAc (2-3%), sulfated structures (1-2%), most abundant: disialylated biantennary O-glycans: <ul style="list-style-type: none"> • core 1 O-glycans (90% of O-glycans), mono-sialylated O-mannose 	Morphine relatively to baclofen: <ul style="list-style-type: none"> • ↑ PSA • ↑ HS/chondroitin sulfate ratio • ↓ O-glycan sialylation • ↑ mono-sialylated O-glycans • ↓ di-sialylated O-glycans 	(Moh et al., 2022)

authors also took the raw data files and used the search tool GPMAW (Peri et al., 2001) to find specific diagnostic ions for glycans, oxonium ions. This tool is generally used for detailed analysis of mass spectrometry data of proteins and peptides.

Most of the cited tools so far were designed to process large datasets. A lower throughput yet useful tool for both glycomics and glycoproteomics is GlycoMod (Cooper et al., 2001). Examples of its application to brain and CSF studies encompass the generation of theoretical lists of glycan compositions or the validation of experimental masses identified in mass spectrometry experiments (Goncalves et al., 2015; Klaric et al., 2021; Matthies et al., 2021; Nakic et al., 2021; Otaki et al., 2022; Palmigiano et al., 2016).

Glycans have also been identified by HILIC and UPLC chromatography run in parallel with glycan standards and often with exoglycosidase sequencing. Again, there are specialized databases and tools for this field, such as, GlycoDigest (DOI: 10.1093/bioinformatics/btu425) a tool that simulates the activity of exoglycosidases on glycan structures. One of the most recent is GlycoStore (Zhao et al., 2018), a database of retention properties for glycans that built on former GlycoBase (Campbell et al., 2008). Using this database Klaric et al. (Klaric et al., 2021)

verified the identification of rat brain N-glycans from HILIC UPLC coupled with mass spectrometry. This database was also used by Samal et al. (Samal et al., 2020), in their analysis of rat brain using UPLC.

In addition to GlycoWorkBench to generate SNFG compliant cartoons of glycan structures, a broad range of similar tools are available (Lal et al., 2020). For example, GlycoGlyph (Mehta and Cummings, 2020) adapted from SugarSketcher (Alocchi et al., 2019), has been used in a recent study of mouse brain glycans (Williams et al., 2022). The advantage of this tool is that it is online and does not require downloading or installation. It also allows output of the glycan structures in standard string formats such as GlycoCT (Herget et al., 2008).

2.4. GlyConnect for brain and CSF glycosylation studies

As mentioned earlier in this article, monosaccharides and their linkages of glycan structures generated in glycomics experiments are either partially or fully determined, but their protein site attachment is poorly defined if at all characterised. In contrast, glycoproteomics experiments generate precise site attachment information but with a poor determination of glycan structures, usually limited to monosaccharide

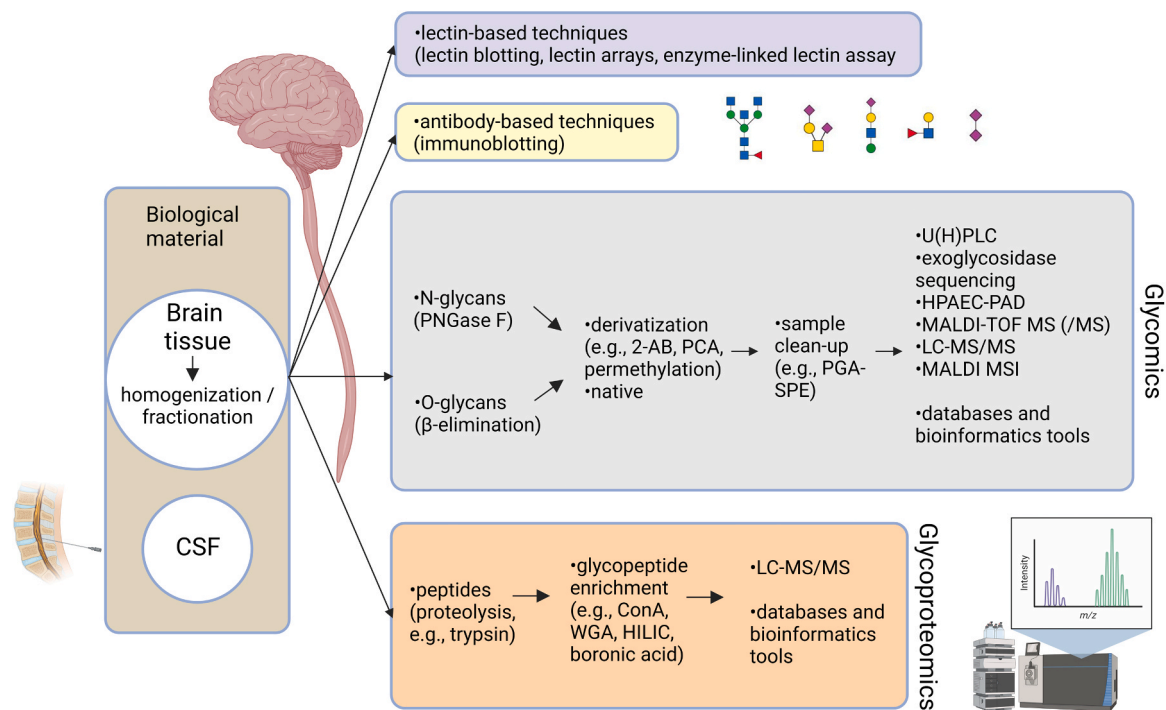


Fig. 2. Schematic representation of the analytical strategies used for brain and CSF protein glycosylation analysis. The information was collected from the studies presented in Table 1 and Table 2. Created with BioRender.com.

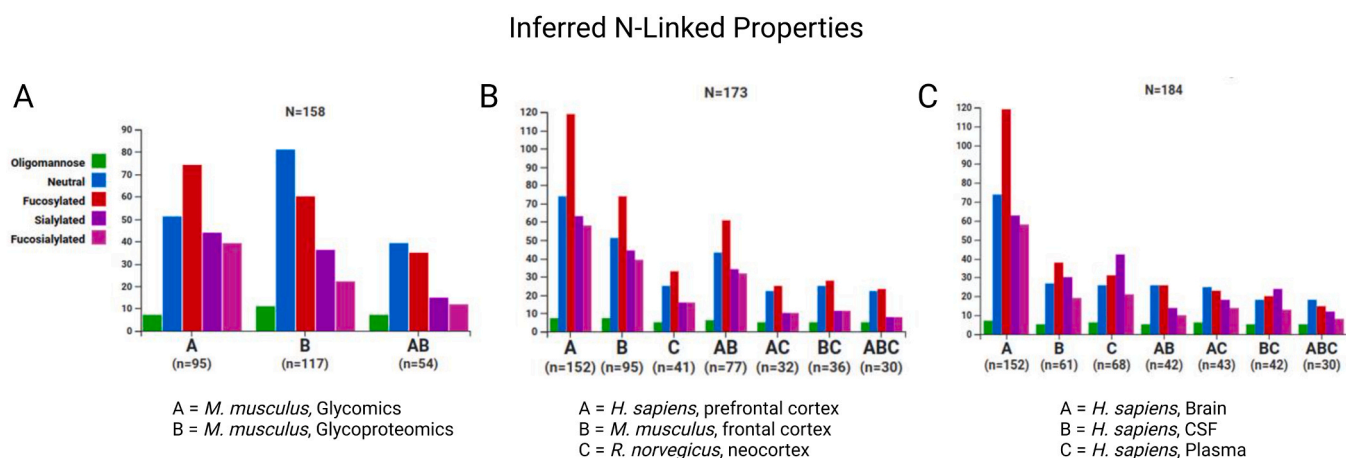


Fig. 3. Comparison of glycan composition using Compozitor resource from GlyConnect. A. Comparison of glycans from mouse (*M. musculus*) glycomics (Williams et al., 2022) and glycoproteomics (Riley et al., 2019) studies. B. Comparison of human (*H. sapiens*) prefrontal cortex (Lee et al., 2020b), mouse frontal cortex (Williams et al., 2022) and rat (*R. norvegicus*) neocortex (Klaric et al., 2021) glycomes. C. Comparison of human brain (Lee et al., 2020b), CSF (Moh et al., 2022; Palmigiano et al., 2016) and plasma (Clerc et al., 2016) glycomes. The Compozitor resource was used following the instructions provided in Supplementary File 1. Created with BioRender.com.

compositions. The two sources of information are brought together in GlyConnect, a curated glycoprotein and glycan database (Alloci et al., 2019), cross-linked to related glycoinformatics or proteomics resources for the annotation of metadata with standard identifiers. GlyConnect also includes dedicated datasets of biologically relevant data which are subsets of the entire database, for example, a COVID-19 specific dataset of reported glycan structures attached to Sars-Cov-2 spike protein (<https://glyconnect.expasy.org/covid-19>) and its binding receptors (e.g., ACE2). Due to the increasing interest in brain glycosylation, and as a complement to this review, a brain dataset accessible at <https://glyconnect.expasy.org/brain>, has recently been added. This dataset covers multiple mammalian species, brain subsections, CSF and disease states and includes a number of references mentioned in this review.

GlyConnect combines a collection of in-house tools developed under the Glyco@ExPASy initiative (Mariethoz et al., 2018), in particular GlyConnect Compozitor (Robin et al., 2020) specifically designed to visualise and compare glycome and glycoproteome interactive maps.

Given a set of glycan compositions representing a glycome (associated with a protein, a cell line, a disease or a tissue) Compozitor plots them in a graph that connects compositions sharing all but one monosaccharide. Additional linked information on potential structure(s) is provided for each composition/node in the graph. Furthermore, each composition is implicitly related to structural properties reflecting a generalized breakdown of structure type (oligomannose, neutral, fucosylated, sialylated, fucosialylated). This information is summarized in a colour-coded bar chart.

Individual glycomes can also be compared with Compozitor. Graphs can be superimposed and additional property bar charts representing shared properties (intersection of sets) are displayed. Fig. 3 shows an example of three relevant glycome comparisons. The description of the steps involved in these analyses is presented in Supplementary File 1. In the first example, the glycan profiles of mouse brain in a glycomics study (glycome A) (Williams et al., 2022) and in glycoproteomics study (glycome B) (Riley et al., 2019) were compared (Fig. 3 A). The glycomics study shows higher levels of fucosylation and sialylation than in the glycoproteomics study. A number of causes can explain the bias towards less sialylation in the glycoproteomics study, including the reduction in efficacy of certain proteases due to the sialic acid moiety, the loss of the sialic acid in collisional activation methods used in MS, or the glycopeptide enrichment method based on concanavalin A affinity with higher affinity for oligomannose glycans than to complex glycans as discussed by the authors (Riley et al., 2019). One cannot exclude that differences are also due to distinct experimental set-ups. Two other applications of Compozitor analysis are discussed below in Section 3 and Section 4.2.

3. N- and O-glycans in brain tissue

The characterization of protein glycosylation in the mammalian CNS, particularly in brain, has been a subject of research for decades (Chen et al., 1998; Krusius and Finne, 1977; Zamze et al., 1998) and more recent studies are shown in Table 1.

Oligomannose glycans have been abundantly detected in brain (Fang et al., 2020; Klaric et al., 2021; Lee et al., 2020b; Mealer et al., 2022; Otaki et al., 2022; Samal et al., 2020; Williams et al., 2022) (Table 1) as in other organs; indeed the Mouse Glycome Atlas 2022 (Otaki et al., 2022) showed that all organs had high levels of oligomannose glycans (40–70%, with approx. 60% in brain), which are expected to originate largely from cellular glycoproteins within the endoplasmic reticulum, some of which being in traffic along the secretory pathway. However, for brain tissues oligomannose glycans may also originate from synaptosomes, which are enriched in this type of glycans (Bradberry et al., 2023; Matthies et al., 2021; Trinidad et al., 2013).

More recent studies also reported the predominance of complex N-linked asialylated biantennary type structures with one or two Gal (Barboza et al., 2021; Fang et al., 2020; Gaunitz et al., 2021a; Klaric et al., 2021; Lee et al., 2020b; Mealer et al., 2022; Samal et al., 2020; Williams et al., 2022) in agreement with early reports (Chen et al., 1998; Krusius and Finne, 1977; Zamze et al., 1998). Abundant structures are presented in Fig. 1A and included fucosylated bisected monoantennary glycan without Gal (H3N4F1), fucosylated bisected biantennary glycan without Gal (H3N5F1) and difucosylated bisected biantennary glycan with one Gal (H4N5F2), as well as a high overall proportion of bisected N-glycans (Table 1). The presence of bisecting GlcNAc hinders processing of N-glycans to higher antennarities and also affects glycan conformation (reviewed in (Chen et al., 2020; Kizuka and Taniguchi, 2018)), which could explain the low amounts observed of tri- and tetraantennary glycans found in the brain. Monoantennary complex glycans such as difucosylated bisected monoantennary glycan with one Gal (H4N4F2) found in several studies (Chen et al., 1998; Klaric et al., 2021; Williams et al., 2022), have been suggested to result from degradation of the corresponding biantennary glycan due to the action of hexosaminidase B (Okamoto et al., 1999); this enzyme could also produce paucimannose structures, with only few Man residues. Hybrid-type structures (Chen et al., 1998; Helm et al., 2022; Klaric et al., 2021; Lee et al., 2020b; Mealer et al., 2022; Rebelo et al., 2021; Samal et al., 2020; Shen et al., 2019; Williams et al., 2022; Zamze et al., 1998) correspond to intermediate biosynthetic forms. By contrast other studies (Tena et al., 2022) reported that N-glycans in the human brain were generally highly branched and highly sialofucosylated, which could be due to the fact that membrane fractions were analysed or to other experimental variations.

N-glycans are highly fucosylated in the brain (Barboza et al., 2021; Fang et al., 2020; Gaunitz et al., 2021a; Helm et al., 2022; Klaric et al., 2021; Lee et al., 2020b; Mealer et al., 2022; Samal et al., 2020; Williams et al., 2022). For example, in the mouse brain cortex 34.7% of N-glycans were fucosylated (Otaki et al., 2022; Williams et al., 2022). Fuc is predominantly bound to GlcNAc of the core (Table 1) resulting from FUT8 activity (Ishii et al., 2007). In addition to the core, Fuc may also be linked to GlcNAc residues of outer-antennae, designated as peripheral fucosylation, and it includes the Lewis^x epitope (Fig. 1C), which has been reported in multiple recent glycomic studies (Gaunitz et al., 2021a; Helm et al., 2022; Klaric et al., 2021; Lee et al., 2020b; Otaki et al., 2022; Williams et al., 2022). Lewis^x was found in several brain glycoproteins such as the cell adhesion L1CAM in human neuronal cells (Gouveia et al., 2012) and several mouse synaptic vesicle glycoproteins, including synaptophysin, synaptoporin or Thy1 (Bradberry et al., 2023). Indeed, synaptic vesicles and synaptosomes are highly enriched in antennary-fucosylated glycans (Bradberry et al., 2023). The Lewis^x epitope plays multiple roles in brain development, neuronal differentiation and synaptic plasticity (Sytnyk et al., 2021). When silencing FUT9, which predominantly, synthesizes the epitope in the brain (Nishihara et al., 2003), impaired neurite outgrowth was observed (Gouveia et al., 2012). Curiously, recent evidence showed Lewis^x attached to bisecting GlcNAc (Helm et al., 2021). Peripheral fucosylation also includes Fucα(1–2)Gal, which has been found in human brain in some studies (Murrey et al., 2009; Tosh et al., 2019), but not in others (Helm et al., 2022). The difference could be attributed to its low amounts.

The extent of N-glycan sialylation in the brain is low (Barboza et al., 2021; Gaunitz et al., 2021a; Otaki et al., 2022; Riley et al., 2019; Sutapitugsakul et al., 2022; Williams et al., 2022) (Table 1). This is at least in part a consequence of the predominant brain complex-type structures being truncated, and, therefore, not providing a terminal Gal substrate for the addition of a sialic acid residue. Functionally relevant in the CNS is the elongation of Neu5Ac with successive Neu5Ac residues, linearly, in α2,8-linkage, to create di-, oligo- and PSA (or polySia, where n ≥ 8); this event is restricted to specific brain proteins, including NCAM, SynCAM, neuropilin-1 and E-selectin ligand 1 (Thiesler et al., 2022). PSA plays different physiological roles in brain and most importantly is crucial for brain development with decreases being observed one week after birth in mouse (Schnaar et al., 2014). The negative charge of the Neu5Ac residue has also been reported to play important physical/biological roles with implications in mental diseases (Sato and Kitajima, 2013).

Another negatively charged structure found in brain is the sulfated HNK-1 epitope (Fig. 1C). This motif has been reported in N-glycans in several studies (Helm et al., 2022; Klaric et al., 2021; Lee et al., 2020b; Wilkinson et al., 2021). It is carried by cell adhesion molecules including NCAM, which is also a PSA carrier (Sytnyk et al., 2021).

For O-glycosylation initial studies identified the presence of O-mannosylation in brain (Chai et al., 1999; Finne et al., 1979) and the abundance of O-GalNAc glycans (Chai et al., 1999) (Fig. 1B). These structures are also corroborated in recent studies (Bleckmann et al., 2009a; Stalnaker et al., 2011; Wilkinson et al., 2021; Williams et al., 2022). O-GalNAc glycans included core 1 and core 2, and were more abundant than O-Man glycans core M1 and core M2 (Wilkinson et al., 2021; Williams et al., 2022).

It is interesting that NeuGc, which is abundant in mouse tissues but not synthesized by humans (Okerblom and Varki, 2017), has not been detected on mouse brain N-glycans (Lee et al., 2020b; Williams et al., 2022) and only detected at very low levels (1–2%) on O-glycans (Williams et al., 2022) although these are extensively sialylated with NeuAc in contrast to N-glycans. Underlying this finding is the fact that CMP-NeuAc hydroxylase, the enzyme that catalyzes the conversion of CMP-N-acetylneuraminic acid (CMP-Neu5Ac) into its hydroxylated derivative CMP-N-glycolylneuraminic acid (CMP-Neu5Gc), is not expressed in the brain (Suzuki, 2006). O-GlcNAcylation is a common PTM in the brain where it has different roles including contributing to

synapse function and maturation (Hart, 2019). For example, in rat a high number of synaptosome proteins, such as synapsin I, are O-GlcNAcylated (Cole and Hart, 2001).

Compozitor was used again to compare the glycomes (in glycomics studies) of the human prefrontal cortex (152 structures) (Lee et al., 2020b), the mouse frontal cortex (95 structures) (Williams et al., 2022) and the rat neocortex (41 structures) (Klaric et al., 2021) (Fig. 3B). While not exactly the same, the prefrontal cortex makes up most of the frontal cortex, which is itself part of the neocortex, and therefore was regarded as a fair comparison. The structural properties bar chart showed a very similar distribution and the overlap of 30 structures among the three species. Furthermore, the presence of comparatively lower levels of sialylated structures, and high levels of fucosylated structures as major features of brain glycosylation are obvious and shared by the three species, which supports the use of mouse or rat as model systems for studying brain diseases. Particularly, the structural properties bar chart shows a very similar distribution and the overlap of structures (77) between the human and mice data, supporting the similarity between these two species, which is in agreement with Lee et al. (Lee et al., 2020b) who reported the similarity of glycan classes between mouse and human brains. Curiously, the relative amount of fucosylated structures appears to increase from rat, to mouse to human, which would require further experimental validation. One cannot exclude that differences observed were due to different experimental set-ups and not species related.

Some interesting examples of structural motifs that may be functionally relevant include: the LacdiNAc structure (see Fig. 1C) reported recently by two groups (Helm et al., 2022; Lee et al., 2020b) but not by others (Williams et al., 2022); fucosylated LacdiNAc (LNDF) recently detected in human brain (Helm et al., 2022); the branched disialylated motif detected in older studies (Torii et al., 2014; Zamze et al., 1998) but not in a more recent one (Klaric et al., 2021). Curiously, LacdiNAc has been detected in human cells and biofluids, including amniotic fluid glycodelin (Dell et al., 1995) or human embryonic kidney cells used for recombinant protein production (Castro et al., 2021); it is also relevant in cancer cells (Machado et al., 2011) and it was found in helminths (together with LNDF) (van Die and Cummings, 2010) where it mediates binding to galectin-3 from macrophages with a potential role in immune response (van den Berg et al., 2004). The role of LacdiNAc in the brain is still unknown.

4. N- and O-glycans from the CSF

4.1. The origins of CSF molecules

CSF is a biofluid that surrounds the brain and the spinal cord providing buoyance support to the brain, protecting against physical injury, contributing to the regulation of intracranial pressure, maintaining the homeostasis of molecules including hormones in the CNS, and allowing the clearing of toxic waste products. The major site of CSF production is the choroid plexus, in cerebral ventricles, where epithelial cells connected by tight junctions form the blood-CSF barrier, which allows the selective transfer of molecules from the blood into the CSF (Engelhardt and Sorokin, 2009). The exchange of molecules between the brain and the blood is also accomplished via the blood-brain barrier, which consists of the endothelial cells of brain capillaries that provide a separation between blood and the interstitial fluid (Gherzi-Egea et al., 2018). In general, larger molecular weight proteins are excluded during CSF formation from the plasma, and whether specific glycoforms can traverse the blood-CSF or blood-brain barrier selectively is not clear at present. In addition to blood-derived molecules, some main CSF proteins such as transthyretin (Schreiber et al., 1990) or β -trace protein (β -TP, prostaglandin-H2 D-isomerase) (Hoffmann et al., 1996) are locally expressed by epithelial cells of the choroid plexus. Furthermore, molecules secreted by brain parenchymal cells to the interstitial fluid may be transported to the CSF via a paravascular or glymphatic route (Da

Mesquita et al., 2018). The CSF gets reabsorbed into the blood mainly via arachnoid granulations into the venous system, the lymphatics of the nasal mucosa and meninges and the choroid plexus epithelium (Da Mesquita et al., 2018). Protein concentration is lower in CSF (200–400 mg/l) (Schilde et al., 2018) than in blood (60–80 mg/ml) (Leeman et al., 2018).

In this way, the CSF is a complex biofluid in close contact with CNS cells, thus enriched in intrathecal synthesized molecules, but with extensive interchange with the blood. Therefore, CSF has been largely used for the identification of deregulated molecules in CNS diseases that may provide with useful biomarkers for diagnosis and prognosis, to monitor disease progression, to evaluate the effect of potential therapies, to use as benchmarks, and to unveil disease mechanisms. Indeed, there is a large body of work aiming at identifying molecular markers from the CSF for neurological diseases (Barba et al., 2022; Dreger et al., 2022; Khalil et al., 2018; Shaw et al., 2020; Swift et al., 2021). For biochemical characterization, CSF collection is usually done by lumbar puncture (Teunissen et al., 2009). Once identified in the CSF, potential biomarkers may be specifically screened for within the blood whose collection is less invasive for the patient.

4.2. Brain glycans detected in the CSF

CSF glycosignatures mirror brain glycosylation to some extent but also contain glycans derived from blood glycoproteins, as presented below.

Indeed, in an early comparative study between human CSF and serum, a fraction of CSF specific ribonucleases bore truncated N-glycans characteristic of brain (Schieven et al., 1982). Later on, CSF β -TP was shown to contain partially truncated biantennary N-glycans largely bisected (70%), with predominant core fucosylation and some peripheral Fuc (Hoffmann et al., 1994). Moreover, in CSF a non-sialylated glycoform of transferrin (asialotransferrin) consisted of the brain glycan H3N5F1 (Fig. 1A) (Futakawa et al., 2012; Hoffmann et al., 1995; Nilsson et al., 2009); this CSF specific form was distinct from the major blood disialylated non-fucosylated biantennary transferrin glycoform (H5N4S2) (Spik et al., 1975).

Recent glyco(proteo)mics studies from total or purified CSF proteins are presented in Table 2. Structures detected in the CSF included truncated biantennary glycans with high level of bisecting GlcNAc and extensive fucosylation according to independent studies (Chen et al., 2021b; Cho et al., 2019; Futakawa et al., 2012; Goncalves et al., 2015; Goyallon et al., 2015; Karlsson et al., 2017; Moh et al., 2022; Nilsson et al., 2009; Palmigiano et al., 2016; Schedin-Weiss et al., 2020; Stanta et al., 2010). Bisected glycans include as most abundant the fucosylated bisected biantennary glycan without Gal (H3N5F1) glycoform (Fig. 1A) (Table 2), which is present in several glycoproteins including transferrin, β -TP, and kallikrein-6 (Goyallon et al., 2015), supporting their intrathecal biosynthesis. CSF glycoprotein fucosylation (46%) (Chen et al., 2021b) included mostly core fucosylation and also peripheral fucosylation as the Lewis^x epitope (Goncalves et al., 2015; Moh et al., 2022; Schedin-Weiss et al., 2020; Stanta et al., 2010).

Sialic acid in CSF glycoproteins is either α 2,6- or α 2,3-linked (Goncalves et al., 2015; Moh et al., 2022; Stanta et al., 2010) and oligosialic acid (Fogli et al., 2012; Goyallon et al., 2015) as well as PSA were detected (Moh et al., 2022). Other low abundant structures in the brain, such as sulfated N-glycans and the LacdiNAc motif are also detected in the CSF in low amounts (Moh et al., 2022).

Oligomannose glycans, which are abundantly detected in brain tissues, are only observed at low levels below 5% in human CSF (Goncalves et al., 2015; Palmigiano et al., 2016; Stanta et al., 2010). This is expected since CSF protein composition includes the secretome of brain cells and selected blood components. Though in low abundance, extracellular vesicles are another cellular-derived component of the CSF (Costa et al., 2020; Sandau et al., 2022). They were found to be enriched in complex glycans but only with low amounts of oligomannose glycans in human

cell supernatants (Costa et al., 2018) and mouse serum (Otaki et al., 2022). As such, they seem to rather contribute to the complex glycan pool in the CSF.

Since the CSF contains blood-derived proteins, it also displays glycoforms originating from blood glycoproteins, such as, disialylated non-fucosylated biantennary glycoform (H5N4S2), which is the most abundant glycoform of the CSF (24% (Goncalves et al., 2015); 16% (Stanta et al., 2010); 13.86–22.21% (Moh et al., 2022)).

Comparison of the glycomes of human CSF (Moh et al., 2022; Palmigiano et al., 2016), brain (Lee et al., 2020b) and plasma (Clerc et al., 2016) with Compozitor reveals a lower proportion of sialylated + sialofucosylated glycoforms in the brain with respect to CSF, which by its turn is also lower than in plasma (Fig. 3 C). On the other hand, levels of fucosylation are much higher in brain than in CSF and plasma. Fuc is predominantly bound to the core but several structures common to brain and CSF and absent from plasma displayed more than one Fuc indicating the presence of peripheral Fuc, such as, H4N5F2 (Hex:4 HexNAc:5 dHex:2), which is compatible with core fucosylated bisected biantennary glycan with one Gal and one Lewis^x motif (Fig. 1). Therefore, Compozitor analysis corroborated that several glycoforms were shared between CSF and brain. Curiously, sulfated glycoforms were found in the brain and CSF but not in plasma. On the other hand, structures common to CSF and plasma but absent from brain were also detected including the disialylated biantennary glycan H5N4S2. Note that GlyConnect displays all identified compositions within the analysed tissue, even the low abundant ones, and does not yet process information on the actual percentage of each glycoform.

O-Glycans from the human CSF have been comparatively less studied than N-glycans. However, predominance of core-1 GalNAc initiated glycans in CSF glycoproteins (Chen et al., 2021a; Halim et al., 2013; Moh et al., 2022; Nilsson et al., 2009) with a large proportion of these structures being sialylated (72.9%) (Chen et al., 2021a) was observed. O-glycans also contain abundant levels of Fuc (29.1%) (Chen et al., 2021a) and the presence of two or three Fuc residues tend to indicate the presence of the Lewis^x epitope. Mono- and di-sialylated core-1 structures (Flowers et al., 2020) as well as core-2 GalNAc initiated structures were detected (Halim et al., 2013) in apolipoprotein E. O-glycosylation site occupancy of apolipoprotein E is distinct between CSF and plasma. CSF apolipoprotein E holds almost 10-fold more abundant C-terminal glycosylation in contrast to the plasma protein, which had comparatively higher N-terminal glycosylation. These differences may have functional implications in high-density lipoproteins (HDL) binding (Flowers et al., 2020). In contrast with brain tissues, mono-sialylated O-Man core M1 structure was reported but only at very low levels (Moh et al., 2022).

Overall, the glycan structures detected in brain tissues, including, bisecting GlcNAc-containing N-glycans, high level of sialylated core-1 GalNAc glycans, fucosylated Lewis^x motif, oligosialic acid and PSA, sulfated structures, are also found in CSF glycoproteins supporting their brain origin. On the other hand, glycoforms highly abundant in blood glycoproteins, such as disialylated biantennary glycans, are abundant in CSF. These observations are compatible with the mechanisms of CSF formation and homeostasis, with molecules derived from local synthesis and others originating from blood.

5. Brain and CSF glycosylation in disease

5.1. Conditions of altered CNS glycosylation

Changes in glycosylation have been described in several disorders affecting the CNS. For example, Congenital Disorders of Glycosylation (CDGs), which result from mutations in genes responsible for glycan biosynthesis, are generally associated with developmental alterations and neurological phenotypes in both the central and peripheral nervous system concomitant to changes in cellular glycosylation (reviewed in (Freeze et al., 2015)). A particular type of CDGs consists of

dystroglycanopathies, which are congenital muscular dystrophies, and result from mutations in genes affecting O-mannosylation primarily of α -dystroglycan (Jahncke and Wright, 2023).

Chemical therapies are available for CDGs (Sosicka et al., 2022) and several clinical trials are ongoing, for example, to investigate their treatment with monosaccharide dietary supplementation (e.g., ClinicalTrials.gov NCT04198987).

A recently investigated type II CDG with severe symptoms including developmental problems including in the brain displayed mutations in the *SLC39A8* gene encoding for the ZIP8 manganese transporter (Boycott et al., 2015; Park et al., 2015). Interestingly this gene also had variations associated with schizophrenia (SCZ) (Schizophrenia Working Group of the Psychiatric Genomics, C, 2014). ZIP8, though not participating directly in glycan biosynthesis, mediates the transport of Mn^{2+} , which is a cofactor for many glycosyltransferases (containing the DXD motif) (Taujale et al., 2020). In the *SLC39A8*-A391T mouse, changes in brain glycosylation were observed distinctively across brain regions and more evident in the cortex of males (Mealer et al., 2022). Global decreases of N-glycosylation and sialic acid content in N- and O-glycans were observed in the cortex, in contrast with cerebellum where total sialic acid level was increased. A recent report for human carriers of the *SLC39A8* missense allele, also showed changes in plasma protein glycosylation profile of two patients which were normalized after Mn^{2+} supplementation (Mealer et al., 2020a).

SCZ is a severe psychiatric illness where functional changes occur in different subregions of the frontal cortex with neurochemical disbalance in dopamine and glutamatergic N-methyl-D-aspartate receptor functionality (Jauhar et al., 2022). Alterations in post-translational modifications including deregulation of protein glycosylation has been described in SCZ, e.g., glutamate- and GABA-associated protein glycosylation or decreased polysialylation of NCAM (Mueller and Meador-Woodruff, 2020; Williams et al., 2020). Genetic studies indicated that SCZ is a polygenic disease (Jauhar et al., 2022; Schizophrenia Working Group of the Psychiatric Genomics, 2014) and variants in the genes associated with glycan biosynthesis *FUT9*, *MAN2A1*, *TMTC1*, *GALNT10*, and *B3GAT1* were identified in association with SCZ (Mealer et al., 2020b). The analysis of post-mortem tissues of SCZ patients also showed changes in the expression of glycosyltransferases (Kippe et al., 2015; Narayan et al., 2009). In CSF a general down-regulation of bisected and sialylated glycans from SCZ patients was reported (Stanta et al., 2010).

In neurodegeneration defects in glycosyltransferases had several functional consequences including alterations in cell surface signaling, deregulation of ganglioside biosynthesis and changes in O-GlcNAcylation associated with AD, PD, ALS and Huntington's disease as reviewed in (Moll et al., 2020).

In neurodegenerative diseases associated with aging impairment of glucose metabolism has been described in the brain; the effect has been more investigated in AD, where it occurs presymptomatically (Cunnane et al., 2020). Glucose metabolism also affects the production of UDP-GlcNAc with reduced levels of glucose leading to reduction of protein O-GlcNAcylation (Bukke et al., 2020; Hart, 2019; Huang et al., 2023; Pinho et al., 2018; Schubert, 2005), which is known to play an active regulatory role in mechanisms of neurodegeneration as reviewed in (Balana and Pratt, 2021; Lee et al., 2021).

Also interesting are the recent findings showing that glucosamine constitutes up to 25% of glycogen monosaccharide composition in the brain instead of the normal glucose component. Diseases that impair glucosamine flux through glycogen, for example, glycogen storage diseases that impact brain function, have been shown to lead to a decrease in cytosolic pools of GlcNAc and reduced N-glycosylation (Sun et al., 2021). This topic has been recently reviewed (Conroy et al., 2021).

Neuroinflammation, which is characterized by the reaction of glial cells (astrocytes, microglia) and infiltrating peripheral immune cells, occurs in neurodegenerative diseases, such as, AD, PD and ALS, in SCZ and in brain cancer. Many changes in glycosylation have been described

during neuroinflammation and this topic has recently been reviewed (Rebello et al., 2022). For example, decreases in sialylation, core and peripheral fucosylation, concomitant to increases in oligomannose, and bisected N-glycans were observed in rat brain striatum of a neuroinflammation model (Rebello, 2021).

Recent studies addressing protein glycosylation deregulation in brain or CSF in neurodegenerative disorders AD, PD, ALS have been displayed in Table 1 and Table 2 and will be further explored in the following sections. Furthermore, a schematic representation of deregulated structures in neurodegenerative diseases is presented in Fig. 4.

5.2. Alzheimer's disease

AD is the most common cause of dementia, it affects primarily cholinergic neurons with degenerative changes occurring especially in the neocortex and hippocampus, and is characterized by amyloid β ($A\beta$) and tau pathology. Promising CSF molecular biomarkers consist of $A\beta_{42}$ / $A\beta_{40}$ ratio and phosphorylated tau (p-tau181, p-tau217) for AD pathology and neurofilament light chain NFL for neurodegeneration (Leuzy et al., 2022; Shaw et al., 2020).

In AD decreased levels of GlcNAcylation were observed in frontal cerebral cortices of patients, particularly of tau protein (Liu et al., 2009). Concomitant to decreased O-GlcNAcylation of tau protein increased phosphorylation is observed, since there is reciprocity between these post-translational modifications: Ser and Thr amino acid residues may either be phosphorylated or O-GlcNAcylated depending on cellular physiological conditions (Hart, 2019; Liu et al., 2004; Liu et al., 2009; Zhu et al., 2014). Hyperphosphorylated tau protein form aggregates in tangles that are a hallmark of AD and other tauopathies (Khanna et al., 2016). Supporting the beneficial effect of O-GlcNAcylation, was the

observation that inhibition of O-GlcNAcase, the enzyme that cleaves O-GlcNAc, led to increased levels of O-GlcNAc tau and reduction of tauopathy as well as reduction of tau in the CSF of the mouse model rTg4510 (Hastings et al., 2017). Variations of O-GlcNAc levels in human AD brains showed distinct trends depending on the cellular fraction and brain region; for example, O-GlcNAcylation was decreased in the cytoplasmic fraction in the frontal lobe but not in the hippocampus (Frenkel-Pinter et al., 2017). Concerning global N-glycosylation in AD a recent study, by MALDI MS imaging showed increased N-glycan levels in the gray matter of human frontal cortex but not in hippocampus (Hawkinson et al., 2022). In support of a cross-talk between O-GlcNAcylation and N-glycosylation was a recent study where OGT knock-down cells showed increased levels of diantennary and 1,6-branched triantennary N-glycans concomitant to decreased levels of 1,4-branched triantennary and tetrantennary glycans (Song et al., 2022). This regulation occurs via the axis OGT / SLC35A3 UDP-GlcNAc transporter / GlcNAc-transferase IV.

Therefore, metabolic alterations in AD and how they affect global glycosylation as well as specific glycan classes and types is a particularly interesting topic that requires further clarification. A relevant study showed that monosaccharide utilization for glycan synthesis depended on cell type and physiological conditions (Wong et al., 2020).

Since O-GlcNAc constitutes a promising therapeutic target, inhibitors of the enzymes involved in its regulation, O-GlcNAc transferase and O-GlcNAcase, have been obtained (Permanne et al., 2022). Some have undergone Phase I trials aiming at Phase II trials for tauopathies (Alteen et al., 2021).

Another potentially deregulated structure that has been largely investigated in AD is bisecting GlcNAc. Early findings in human AD brains, reported increased levels of mRNA expression of the *MGAT3*

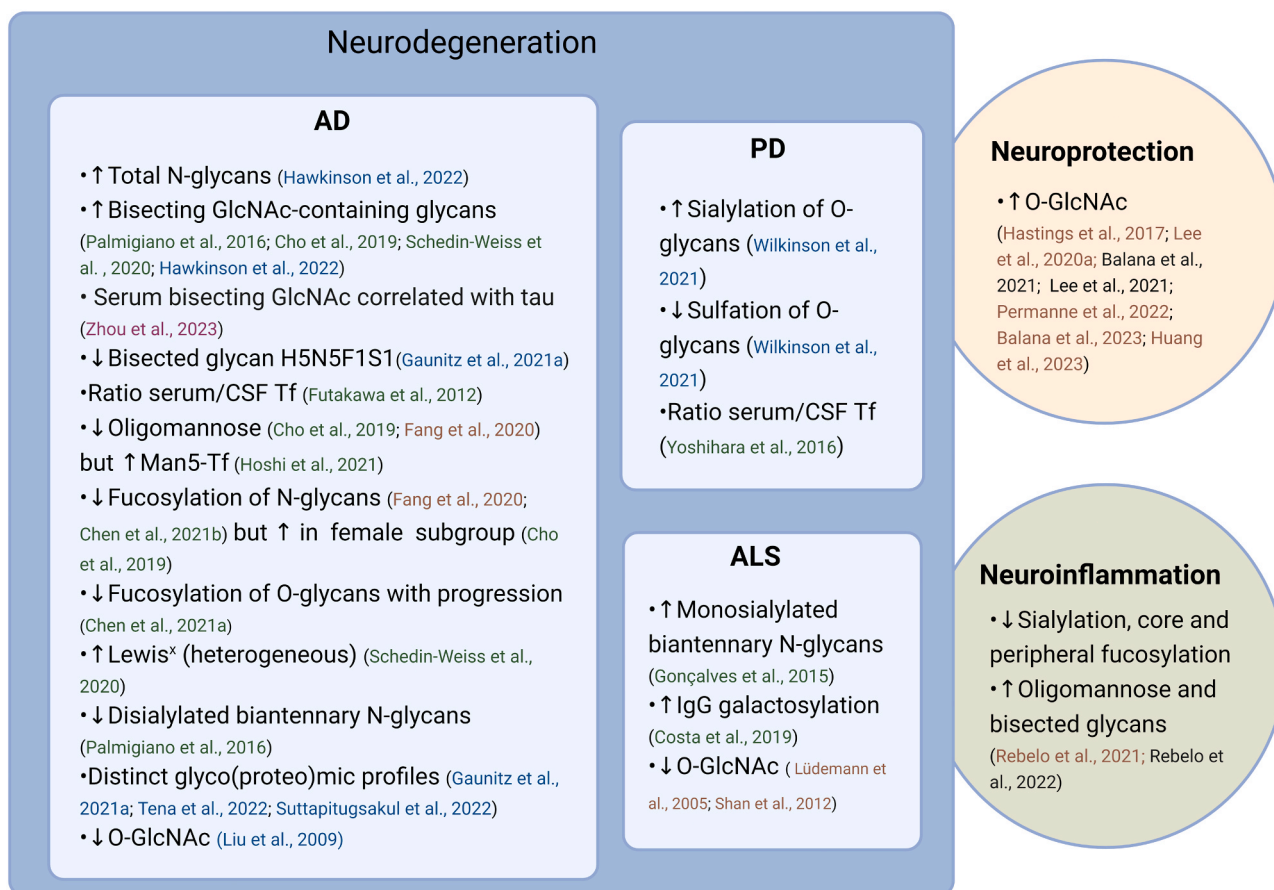


Fig. 4. Major deregulated glycan structures from glycoproteins as potential biomarker targets in neurodegenerative diseases. References in green, blue, pink, brown and black correspond to studies in human CSF, human brain tissues, human blood, disease models and review articles, respectively. Created with BioRender.com.

gene that encodes the GlcNAc-transferase III enzyme responsible for the synthesis of bisecting GlcNAc (Akasaka-Manya et al., 2010). In a *MGAT3* knockout mouse decreased pathological A β accumulation was observed (Kizuka et al., 2015) indicating a role of bisecting GlcNAc in this pathology. A recent study also indicated increases in some bisected glycans in mouse AD frontal cortex but a decrease in bisecting LacNAc-containing glycan in human AD hippocampal tissue (Hawkinson et al., 2022). On the other hand, in AD frontal cortex and hippocampus, individual glycans potentially bisected showed distinct trends between controls and AD; particularly, a confirmed bisected glycan showed a decrease in AD relatively to the control (Gaunitz et al., 2021a).

Concerning the CSF, several studies aiming at quantifying bisecting GlcNAc in AD have been performed and recently reviewed (Gaunitz et al., 2021b) (Table 2). In one study, an increase in the levels of several bisecting GlcNAc glycans was reported in a subgroup of AD patients (Palmigiano et al., 2016). Another study reported an increase exclusively for the AD female population (Cho et al., 2019). A limitation with these studies is the low number of patients analysed. Interestingly, a study with a higher number of patients (242) using the enzyme-linked lectin assay (ELLA) with the lectin PHA-E that recognizes bisecting GlcNAc, showed higher levels of PHA-E binding in AD and MCI than SCI; there was also significant correlation with phosphorylated tau and total tau, which are AD markers (Schedin-Weiss et al., 2020). More recently, a model was developed based on a retrospective cohort of 233 individuals, which included tau/bisecting GlcNAc ratio from serum, apolipoprotein E status, and Mini-Mental State Examination score, which could predict future AD (Zhou et al., 2023). To strengthen the potential for bisected N-glycans to provide AD markers, it would be crucial to validate these findings in larger independent cohorts of patients.

Another potential biomarker target was the ratio between CSF sialylated to bisected Tf glycoforms, quantified by immunoblotting, that differentiated AD from dementia idiopathic normal pressure hydrocephalus (iNPH) (Futakawa et al., 2012; Hoshi et al., 2017).

Other structural changes have been assessed. In N-glycans, a decrease of oligomannose was observed in an AD mouse model (Fang et al., 2020), and in human CSF (Cho et al., 2019). However, a Man5-transferrin glycoform was found increased in AD CSF and MCI patients (Hoshi et al., 2021). Other trends involve fucosylation that was found to decrease in an AD mouse model using lectin arrays and glycoproteomic analysis (Fang et al., 2020). However, whereas this observation was confirmed for AD patients (Chen et al., 2021b), it was contradicted for an AD female population (Cho et al., 2019) in human CSF. Note that a heterogeneous increase in Lewis^x was also detected in CSF AD (Schedin-Weiss et al., 2020). As to N-glycan sialylation, decreased levels were detected in human CSF (Palmigiano et al., 2016).

In O-GalNAc type O-glycans, a glycoproteomics study of human AD CSF (Chen et al., 2021a), showed a high amount of core 1 structures (48.3%). A trend towards decreased fucosylation during disease progression from control to MCI to AD was reported. On the other hand, O-glycosylation increased in endogenous peptides.

A recent N-glycoproteomics study of AD asymptomatic and symptomatic brains and controls, showed differences in glycosylation at individual site level that included changes in frequency of bisection, fucosylation, galactosylation, and the number of antennae (Suttapitugsakul et al., 2022).

5.3. Parkinson's disease

PD is caused by degeneration of the dopaminergic pathway from substantia nigra in the midbrain to the corpus striatum in the basal ganglia. α -Synuclein aggregation is a hallmark of PD pathology and other synucleinopathies. The potential of α - and β -synucleins as CSF biomarker for synucleinopathies has been discussed recently (Barba et al., 2022).

α -Synuclein is O-GlcNAcylated in PD, and evidence showed that upregulation of O-GlcNAcylation was protective of dopamine neurons in different aspects of PD pathology, including neurodegeneration in a PD

mouse model (Lee et al., 2020a). Recently, it was reported that O-GlcNAc modified α -synuclein results in an amyloid-strain with decreased seeding activity and pathology (Balana et al., 2023).

In another study (Wilkinson et al., 2021), an increase in sialylation in the substantia nigra and striatum and a decrease in sulfation in the striatum were observed on O-glycans of PD patients. Furthermore, incidental Lewy body disease patients (occurring at initial stages of parkinsonism) showed decreased levels of O-mannose-core and glucuronylated structures in the striatum.

Unfortunately, for CSF glyco(proteo)omics in PD the information is scarce. In one study, the ratio of serum-type / brain-type Tf (H5N4S2 and H3N5F1 glycoforms, respectively) in the CSF was higher in PD patients than in controls, as calculated from immunoblotting (Yoshihara et al., 2016). In order to corroborate the potential of this ratio as marker for neurological diseases it would be important to use a more rigorous method of quantification with a higher number of patients and controls.

5.4. Amyotrophic lateral sclerosis

Amyotrophic lateral sclerosis (ALS) is a neurodegenerative disease caused by the progressive death of motor neurons. Neurofilaments, including neurofilament light chain (NFL) and phosphoneurofilament heavy chain (pNFH), from the CSF and the plasma constitute promising biomarkers for the disease and have been largely investigated (Feldman et al., 2022; Goncalves et al., 2015; Lehnert et al., 2014; Oeckl et al., 2016). However, since neurofilaments are neurodegeneration markers they are also deregulated in other neurodegenerative diseases and it would be useful to identify additional and more specific targets.

Neurofilaments are post-translationally modified by O-GlcNAcylation and phosphorylation (Khailil et al., 2018). In the transgenic mouse model SOD1G93A of ALS, a decrease in O-GlcNAcylation in the spinal cord (Shan et al., 2012) including of neurofilament medium chain (Ludemann et al., 2005) was observed. Recently, the ratio of O-GlcNAcylated to total NFL from the serum appeared as a promising marker to differentiate healthy patients from patients with brain disease (cerebral thrombosis, AD and PD) and also to differentiate non-neurodegenerative cerebral thrombosis from neurodegenerative diseases AD and PD (Zhou et al., 2022). It will be interesting to investigate this ratio in other neurodegenerative diseases such as ALS.

A potential link between glycosylation and ALS has recently appeared, with the finding of mutations in the *GLT8D1* gene in families with ALS (Cooper-Knock et al., 2019). Sequence analysis of the corresponding protein assigned it to the GT8 glycosyltransferase family described in the CAZy database of Carbohydrate-Active Enzymes (<http://www.cazy.org/GT8.html>), which opened interesting perspectives of novel disease mechanisms. *GLT8D1* has also been identified as a SCZ risk gene (Yang et al., 2018), which is in line with evidence from the literature supporting a genetic relationship between ALS and SCZ (Li et al., 2021; McLaughlin et al., 2017).

NP-HPLC data show that monosialylated diantennary glycans in CSF are more highly expressed in patients relative to neurological controls (Goncalves et al., 2015). Furthermore, higher levels of galactosylated species in CSF IgG from ALS patients compared to neurological controls (predominantly ALS-mimicking disorders) with a predictive value comparable to that of phosphoneurofilament heavy chain were found (Costa et al., 2019). These findings were compatible with inflammation and autoimmunity not being primary events in ALS, by contrast with chronic inflammation diseases where decreased levels of IgG sialylation and galactosylation were observed, for example, in chronic inflammatory demyelinating polyneuropathy (Wong et al., 2016) or multiple sclerosis (Wuhrer et al., 2015).

6. General conclusions and perspectives

Proteins from the CNS are extensively glycosylated with glycans playing important roles, for instance in the modulation of receptor

function or in cell adhesion. Recent progress using sensitive and high-resolution analytical techniques allows the collection of large data sets containing thorough information about the mammalian brain glycome. Yet, comparison of trends is many times hindered due to variations associated with different experimental set-ups; in this context, the publication of standardized protocols with the inclusion of relevant standards would contribute to a better comparability of studies, thus allowing more robust physiological and translational conclusions. Furthermore, the development of glycoinformatics resources including curated databases as presented in this work as well as additional tools accounting for quantitative information, are of crucial importance for comparing studies. Such tools would lead to model variations associated with brain diseases, unveil new associations, new trends and, consequently, design new therapeutic targets.

Brain has long recognized distinguishing patterns of protein glycosylation that are also reflected in CSF molecular composition. Since deregulation of glycosylation occurs in several CNS diseases, monitoring glycosylation changes in the biofluid CSF appears as a particularly promising field of research to identify novel disease biomarkers. For example, in AD bisecting GlcNAc has appeared as a potential but still controversial target, as well as increased global glycosylation. On the other hand, O-GlcNAcylation has been studied for longer time in AD and also in other neurodegenerative diseases, such as PD or ALS, and not only is it a potential marker but also appears to have a protective role. High levels of fucosylation being a marked feature of brain glycoproteins deserves further investigation, not only core fucosylation but also peripheral fucosylation, namely, the functionally relevant Lewis^x motif. Other structures, such as PSA, sulfated motifs or LacdiNAc could also provide interesting targets.

In conclusion, protein glycosylation and its relevance in brain disease is currently seen in a new light due to the development of powerful analytical techniques complemented by innovative glycoinformatics tools. The urge to understand disease mechanisms to unveil novel therapeutic targets also pushed forward this field of research. Furthermore, alterations in protein glycosylation, particularly from the CSF, constitute promising biomarker candidates towards a precision medicine approach.

CRediT authorship contribution statement

Conceptualization and literature search by JC. Data curation and initial draft preparation by JC and CH. Artwork done by JC, CH and FL. Brain dataset implementation by CH and FL. Writing and revision by JC, CH and FL.

Declaration of Competing Interest

none.

Acknowledgements

We thank: Prof. Nicole H. Packer and Dr. Katherine Wongtrakul-Kish, School of Natural Sciences, Faculty of Science, & Engineering, Macquarie University, Sydney 2109, Australia, for their suggestions and critical reading of the manuscript; Dr. Julien Mariethoz for his contribution to integrating the brain dataset in GlyConnect.

This work was supported by FCT - Fundação para a Ciência e a Tecnologia, I.P., through iNOVA4Health (UIDB/04462/2020, UIDP/04462/2020) and LS4FUTURE Associated Laboratory (LA/P/0087/2020).

The development of resources of the Glyco@Expasy initiative that includes GlyConnect and GlyConnect Compozitor, is supported by the Swiss Federal Government through the State Secretariat for Education, Research and Innovation (SERI). Expasy is maintained by the Swiss Institute of Bioinformatics and hosted at the Vital-IT Competency Center.

References

- Asakawa-Manyá, K., Manyá, H., Sakurai, Y., Wojczyk, B.S., Kozutsumi, Y., Saito, Y., Taniguchi, N., Murayama, S., Spitalnik, S.L., Endo, T., 2010. Protective effect of N-glycan bisecting GlcNAc residues on beta-amyloid production in Alzheimer's disease. *Glycobiology* 20 (1), 99–106. <https://doi.org/10.1093/glycob/cwp152>.
- Alaamery, M., Albeshri, N., Aljawini, N., Alsuwailm, M., Massadeh, S., Wheeler, M.A., Chao, C.C., Quintana, F.J., 2021. Role of sphingolipid metabolism in neurodegeneration. *J. Neurochem* 158 (1), 25–35. <https://doi.org/10.1111/jnc.15044>.
- Alloci, D., Mariethoz, J., Gastaldello, A., Gasteiger, E., Karlsson, N.G., Kolarich, D., Packer, N.H., Lisacek, F., 2019. GlyConnect: glycoproteomics goes visual, interactive, and analytical. *J. Proteome Res.* 18 (2), 664–677. <https://doi.org/10.1021/acs.jproteome.8b00766>.
- Alteen, M.G., Tan, H.Y., Vocadlo, D.J., 2021. Monitoring and modulating O-GlcNAcylation: assays and inhibitors of O-GlcNAc processing enzymes. *Curr. Opin. Struct. Biol.* 68, 157–165. <https://doi.org/10.1016/j.sbi.2020.12.008>.
- Aoki-Kinoshita, K.F., Lisacek, F., Karlsson, N., Kolarich, D., Packer, N.H., 2021. *GlycoBioinformatics*. Beilstein J. Org. Chem. 17, 2726–2728. <https://doi.org/10.3762/bjoc.17.184>.
- Balana, A.T., Pratt, M.R., 2021. Mechanistic roles for altered O-GlcNAcylation in neurodegenerative disorders. *Biochem. J.* 478 (14), 2733–2758. <https://doi.org/10.1042/BCJ20200609>.
- Balana, A.T., Mahul-Mellier, A.L., Nguyen, B.A., Horvath, M., Javed, A., Hard, E.R., Jasiqi, Y., Singh, P., Afrin, S., Pedretti, R., Singh, V., Lee, V.M., Luk, K.C., Saelices, L., Lashuel, H.A., Pratt, M.R., 2023. O-GlcNAc modification forces the formation of an alpha-Synuclein amyloid-strain with notably diminished seeding activity and pathology. *bioRxiv*. <https://doi.org/10.1101/2023.03.07.531573>.
- Barba, L., Paolini Paoletti, F., Bellomo, G., Gaetani, L., Halbigbauer, S., Oeckl, P., Otto, M., Parmetti, L., 2022. Alpha and beta synucleins: from pathophysiology to clinical application as biomarkers. *Mov. Disord.* 37 (4), 669–683. <https://doi.org/10.1002/mds.28941>.
- Barboza, M., Solakylidirim, K., Knotts, T.A., Luke, J., Gareau, M.G., Raybould, H.E., Lebrilla, C.B., 2021. Region-specific cell membrane N-glycome of functional mouse brain areas revealed by nanoLC-MS analysis. *Mol. Cell Proteom.* 20, 100130. <https://doi.org/10.1016/j.mcpro.2021.100130>.
- Bern, M., Kil, Y.J., Becker, C., 2012. Byonic: advanced peptide and protein identification software. *Curr. Protoc. Bioinforma.* 20. <https://doi.org/10.1002/0471250953.bi1320s40>.
- Bleckmann, C., Geyer, H., Lieberoth, A., Splittstoesser, F., Liu, Y., Feizi, T., Schachner, M., Kleene, R., Reinhold, V., Geyer, R., 2009a. O-glycosylation pattern of CD24 from mouse brain. *Biol. Chem.* 390 (7), 627–645. <https://doi.org/10.1515/BC.2009.044>.
- Bleckmann, C., Geyer, H., Reinhold, V., Lieberoth, A., Schachner, M., Kleene, R., Geyer, R., 2009b. Glycomic analysis of N-linked carbohydrate epitopes from CD24 of mouse brain. *J. Proteome Res.* 8 (2), 567–582. <https://doi.org/10.1021/pr800729r>.
- Bojar, D., Lisacek, F., 2022. Glycoinformatics in the artificial intelligence era. *Chem. Rev.* 122 (20), 15971–15988. <https://doi.org/10.1021/acs.chemrev.2c00110>.
- Boycott, K.M., Beaulieu, C.L., Kernohan, K.D., Gebril, O.H., Mhanni, A., Chudley, A.E., Redl, D., Qin, W., Hampson, S., Kury, S., Tetreault, M., Puffenberger, E.G., Scott, J. N., Bezieau, S., Reis, A., Uebe, S., Schumacher, J., Hegele, R.A., McLeod, J.R., Galvez-Peralta, M., Majewski, J., Ramaekers, V.T., Care4Rare Canada, C., Nebert, D. W., Innes, A.M., Parboosingh, J.S., Abou Jamra, R., 2015. Autosomal-recessive intellectual disability with cerebellar atrophy syndrome caused by mutation of the manganese and zinc transporter gene SLC39A8. *Am. J. Hum. Genet.* 97 (6), 886–893. <https://doi.org/10.1016/j.ajhg.2015.11.002>.
- Bradberry, M.M., Peters-Clarke, T.M., Shishkova, E., Chapman, E.R., Coon, J.J., 2023. N-glycoproteomics of brain synapses and synaptic vesicles. *Cell Rep.* 42 (4), 112368. <https://doi.org/10.1016/j.celrep.2023.112368>.
- Bukke, V.N., Villani, R., Archana, M., Wawrzyniak, A., Balawender, K., Orkisz, S., Ferraro, L., Serviddio, G., Cassano, T., 2020. The glucose metabolic pathway as a potential target for therapeutics: crucial role of glycosylation in Alzheimer's disease. *Int. J. Mol. Sci.* 21 (20) <https://doi.org/10.3390/ijms21207739>.
- Campbell, M.P., Royle, L., Radcliffe, C.M., Dwek, R.A., Rudd, P.M., 2008. GlycoBase and autoGU: tools for HPLC-based glycan analysis. *Bioinformatics* 24 (9), 1214–1216. <https://doi.org/10.1093/bioinformatics/btn090>.
- Castro, R., Nobre, L.S., Eleuterio, R.P., Thomaz, M., Pires, A., Monteiro, S.M., Mendes, S., Gomes, R.A., Clemente, J.J., Sousa, M.F.Q., Pinto, F., Silva, A.C., Freitas, M.C., Lemos, A.R., Akpogheneta, O., Kosack, L., Bergman, M.L., Duarte, N., Matoso, P., Costa, J., Bandejas, T.M., Gomes-Alves, P., Goncalves, C.P., Demengeot, J., Alves, P. M., 2021. Production of high-quality SARS-CoV-2 antigens: impact of bioprocess and storage on glycosylation, biophysical attributes, and ELISA serologic tests performance. *Biotechnol. Bioeng.* 118 (6), 2202–2219. <https://doi.org/10.1002/bit.27725>.
- Chai, W., Yuen, C.T., Kogelberg, H., Carruthers, R.A., Margolis, R.U., Feizi, T., Lawson, A. M., 1999. High prevalence of 2-mono- and 2,6-di-substituted manol-terminating sequences among O-glycans released from brain glycopeptides by reductive alkaline hydrolysis. *Eur. J. Biochem.* 263 (3), 879–888. <https://doi.org/10.1046/j.1432-1327.1999.00572.x>.
- Chau, T.H., Chernykh, A., Kawahara, R., Thaysen-Andersen, M., 2023. Critical considerations in N-glycoproteomics. *Curr. Opin. Chem. Biol.* 73, 102272. <https://doi.org/10.1016/j.cbpa.2023.102272>.
- Chen, Q., Tan, Z., Guan, F., Ren, Y., 2020. The essential functions and detection of bisecting GlcNAc in cell biology. *Front. Chem.* 8, 511. <https://doi.org/10.3389/fchem.2020.00511>.

- Chen, Y.J., Wing, D.R., Guile, G.R., Dwek, R.A., Harvey, D.J., Zamze, S., 1998. Neutral N-glycans in adult rat brain tissue—complete characterisation reveals fucosylated hybrid and complex structures. *Eur. J. Biochem.* 251 (3), 691–703. <https://doi.org/10.1046/j.1432-1327.1998.2510691.x>.
- Chen, Y.L., Chang, W.H., Lee, C.Y., Chen, Y.R., 2019. An improved scoring method for the identification of endogenous peptides based on the Mascot MS/MS ion search. *Analyst* 144 (9), 3045–3055. <https://doi.org/10.1039/c8an02141d>.
- Chen, Z., Wang, D., Yu, Q., Johnson, J., Shipman, R., Zhong, X., Huang, J., Yu, Q., Zetterberg, H., Asthana, S., Carlsson, C., Okonkwo, O., Li, L., 2021a. In-depth site-specific o-glycosylation analysis of glycoproteins and endogenous peptides in cerebrospinal fluid (CSF) from healthy individuals, mild cognitive impairment (MCI), and Alzheimer's disease (AD) patients. *ACS Chem. Biol.* <https://doi.org/10.1021/acscchembio.1c00932>.
- Chen, Z., Yu, Q., Yu, Q., Johnson, J., Shipman, R., Zhong, X., Huang, J., Asthana, S., Carlsson, C., Okonkwo, O., Li, L., 2021b. In-depth site-specific analysis of N-glycoproteome in human cerebrospinal fluid and glycosylation landscape changes in Alzheimer's disease. *Mol. Cell Proteom.* 20, 100081 <https://doi.org/10.1016/j.mcpro.2021.100081>.
- Cho, B.G., Veillon, L., Mechref, Y., 2019. N-glycan profile of cerebrospinal fluids from Alzheimer's disease patients using liquid chromatography with mass spectrometry. *J. Proteome Res.* 18 (10), 3770–3779. <https://doi.org/10.1021/acs.jproteome.9b00504>.
- Clerc, F., Reiding, K.R., Jansen, B.C., Kammeijer, G.S., Bondt, A., Wuhler, M., 2016. Human plasma protein N-glycosylation. *Glycoconj. J.* 33 (3), 309–343. <https://doi.org/10.1007/s10719-015-9626-2>.
- Cole, R.N., Hart, G.W., 2001. Cytosolic O-glycosylation is abundant in nerve terminals. *J. Neurochem.* 79 (5), 1080–1089. <https://doi.org/10.1046/j.1471-4159.2001.00655.x>.
- Conroy, L.R., Hawkinson, T.R., Young, L.E.A., Gentry, M.S., Sun, R.C., 2021. Emerging roles of N-linked glycosylation in brain physiology and disorders. *Trends Endocrinol. Metab.* 32 (12), 980–993. <https://doi.org/10.1016/j.tem.2021.09.006>.
- Cooper, C.A., Gasteiger, E., Packer, N.H., 2001. GlycoMod—a software tool for determining glycosylation compositions from mass spectrometric data. *Proteomics* 1 (2), 340–349. [https://doi.org/10.1002/1615-9861\(200102\)1:2<340::AID-PROT340>3.0.CO;2-B](https://doi.org/10.1002/1615-9861(200102)1:2<340::AID-PROT340>3.0.CO;2-B).
- Cooper-Knock, J., Moll, T., Ramesh, T., Castelli, L., Beer, A., Robins, H., Fox, I., Niedermoser, I., Van Damme, P., Moisse, M., Robberecht, W., Hardiman, O., Panades, M.P., Assilouli, A., Mora, J.S., Basak, A.N., Morrison, K.E., Shaw, C.E., Al-Chalabi, A., Landers, J.E., Wyles, M., Heath, P.R., Higginbottom, A., Walsh, T., Kazoka, M., McDermott, C.J., Hautbergue, G.M., Kirby, J., Shaw, P.J., 2019. Mutations in the glycosyltransferase domain of GLT8D1 are associated with familial amyotrophic lateral sclerosis. *e2295 Cell Rep.* 26 (9), 2298–2306. <https://doi.org/10.1016/j.celrep.2019.02.006>.
- Costa, J., Gatermann, M., Nimitz, M., Kandzia, S., Glatzel, M., Conradt, H.S., 2018. N-glycosylation of extracellular vesicles from HEK-293 and glioma cell lines. *Anal. Chem.* 90 (13), 7871–7879. <https://doi.org/10.1021/acs.analchem.7b05455>.
- Costa, J., Streich, L., Pinto, S., Pronto-Laborinho, A., Nimitz, M., Conradt, H.S., de Carvalho, M., 2019. Exploring cerebrospinal fluid IgG N-glycosylation as potential biomarker for amyotrophic lateral sclerosis. *Mol. Neurobiol.* 56 (8), 5729–5739. <https://doi.org/10.1007/s12035-019-1482-9>.
- Costa, J., Pronto-Laborinho, A., Pinto, S., Gromicho, M., Bonucci, S., Tranfield, E., Correia, C., Alexandre, B.M., de Carvalho, M., 2020. Investigating LGALS3BP/90 K glycoprotein in the cerebrospinal fluid of patients with neurological diseases. *Sci. Rep.* 10 (1), 5649. <https://doi.org/10.1038/s41598-020-62592-w>.
- Cunnane, S.C., Trushina, E., Morland, C., Prigione, A., Casadesus, G., Andrews, Z.B., Beal, M.F., Bergersen, L.H., Brinton, R.D., de la Monte, S., Eckert, A., Harvey, J., Jeggo, R., Jhamandas, J.H., Kann, O., la Cour, C.M., Martin, W.F., Mithieux, G., Moreira, P.L., Murphy, M.P., Nave, K.A., Nuriel, T., Oliet, S.H.R., Saudou, F., Mattson, M.P., Swerdlow, R.H., Millan, M.J., 2020. Brain energy rescue: an emerging therapeutic concept for neurodegenerative disorders of ageing. *Nat. Rev. Drug Discov.* 19 (9), 609–633. <https://doi.org/10.1038/s41573-020-0072-x>.
- Da Mesquita, S., Fu, Z., Kipnis, J., 2018. The meningeal lymphatic system: a new player in neurophysiology. *Neuron* 100 (2), 375–388. <https://doi.org/10.1016/j.neuron.2018.09.022>.
- Damerell, D., Ceroni, A., Maass, K., Ranzinger, R., Dell, A., Haslam, S.M., 2012. The glycanbuilder and glycoworkbench glycoinformatics tools: updates and new developments. *Biol. Chem.* 393 (11), 1357–1362. <https://doi.org/10.1515/hsz-2012-0135>.
- Damerell, D., Ceroni, A., Maass, K., Ranzinger, R., Dell, A., Haslam, S.M., 2015. Annotation of glycomics MS and MS/MS spectra using the GlycoWorkbench software tool. *Methods Mol. Biol.* 1273, 3–15. https://doi.org/10.1007/978-1-4939-2343-4_1.
- Decker, Y., Schomburg, R., Németh, E., Vitkin, A., Fousse, M., Liu, Y., Fassbender, K., 2016. Abnormal galactosylation of immunoglobulin G in cerebrospinal fluid of multiple sclerosis patients. *Mult Scler* 22 (14), 1794–1803. <https://doi.org/10.1177/1352458516631036>.
- Dell, A., Morris, H.R., Easton, R.L., Panico, M., Patankar, M., Oehninger, S., Koistinen, R., Koistinen, H., Seppala, M., Clark, G.F., 1995. Structural analysis of the oligosaccharides derived from glycodefin, a human glycoprotein with potent immunosuppressive and contraceptive activities. *J. Biol. Chem.* 270 (41), 24116–24126. <https://doi.org/10.1074/jbc.270.41.24116>.
- van den Berg, T.K., Honing, H., Franke, N., van Remoortere, A., Schiphorst, W.E., Liu, F.T., Deelder, A.M., Cummings, R.D., Hokke, C.H., van Die, I., 2004. LactiNAC-glycans constitute a parasite pattern for galectin-3-mediated immune recognition. *J. Immunol.* 173 (3), 1902–1907. <https://doi.org/10.4049/jimmunol.173.3.1902>.
- van Die, I., Cummings, R.D., 2010. Glycan gimmickry by parasitic helminths: a strategy for modulating the host immune response. *Glycobiology* 20 (1), 2–12. <https://doi.org/10.1093/glycob/cwp140>.
- Downs, M., Zaia, J., Sethi, M.K., 2022. Mass spectrometry methods for analysis of extracellular matrix components in neurological diseases. *Mass Spectrom. Rev.* e21792 <https://doi.org/10.1002/mas.21792>.
- Dreger, M., Steinbach, R., Otto, M., Turner, M.R., Grosskreutz, J., 2022. Cerebrospinal fluid biomarkers of disease activity and progression in amyotrophic lateral sclerosis. *J. Neurol. Neurosurg. Psychiatry* 93 (4), 422–435. <https://doi.org/10.1136/jnnp-2021-327503>.
- Engelhardt, B., Sorokin, L., 2009. The blood-brain and the blood-cerebrospinal fluid barriers: function and dysfunction. *Semin. Immunopathol.* 31 (4), 497–511. <https://doi.org/10.1007/s00281-009-0177-0>.
- Faissner, A., Teplow, D.B., Kubler, D., Keilhauer, G., Kinzel, V., Schachner, M., 1985. Biosynthesis and membrane topography of the neural cell adhesion molecule L1. *EMBO J.* 4 (12), 3105–3113. <https://doi.org/10.1002/j.1460-2075.1985.tb04052.x>.
- Fang, P., Xie, J., Sang, S., Zhang, L., Liu, M., Yang, L., Xu, Y., Yan, G., Yao, J., Gao, X., Qian, W., Wang, Z., Zhang, Y., Yang, P., Shen, H., 2020. Multilayered N-glycoproteome profiling reveals highly heterogeneous and dysregulated protein N-glycosylation related to Alzheimer's disease. *Anal. Chem.* 92 (1), 867–874. <https://doi.org/10.1021/acs.analchem.9b03555>.
- Fehl, C., Hanover, J.A., 2022. Tools, tactics and objectives to interrogate cellular roles of O-GlcNAc in disease. *Nat. Chem. Biol.* 18 (1), 8–17. <https://doi.org/10.1038/s41589-021-00903-6>.
- Feldman, E.L., Goutman, S.A., Petri, S., Mazzini, L., Savelieff, M.G., Shaw, P.J., Sobue, G., 2022. Amyotrophic lateral sclerosis. *Lancet* 400 (10360), 1363–1380. [https://doi.org/10.1016/S0140-6736\(22\)01272-7](https://doi.org/10.1016/S0140-6736(22)01272-7).
- Finne, J., Krusius, T., Margolis, R.K., Margolis, R.U., 1979. Novel mannitol-containing oligosaccharides obtained by mild alkaline borohydride treatment of a chondroitin sulfate proteoglycan from brain. *J. Biol. Chem.* 254 (20), 10295–10300.
- Flowers, S.A., Grant, O.C., Woods, R.J., Rebeck, G.W., 2020. O-glycosylation on cerebrospinal fluid and plasma apolipoprotein E differs in the lipid-binding domain. *Glycobiology* 30 (2), 74–85. <https://doi.org/10.1093/glycob/cwz084>.
- Fogli, A., Merle, C., Roussel, V., Schiffmann, R., Ughetto, S., Theisen, M., Boespflug-Tanguy, O., 2012. CSF N-glycan profiles to investigate biomarkers in brain developmental disorders: application to leukodystrophies related to eIF2B mutations. *PLoS One* 7 (8), e42688. <https://doi.org/10.1371/journal.pone.0042688>.
- Freeze, H.H., Eklund, E.A., Ng, B.G., Patterson, M.C., 2015. Neurological aspects of human glycosylation disorders. *Annu. Rev. Neurosci.* 38, 105–125. <https://doi.org/10.1146/annurev-neuro-071714-034019>.
- Frenkel-Pinter, M., Shmueli, M.D., Raz, C., Yanku, M., Zilberzweig, S., Gazit, E., Segal, D., 2017. Interplay between protein glycosylation pathways in Alzheimer's disease. *Sci. Adv.* 3 (9), e1601576 <https://doi.org/10.1126/sciadv.1601576>.
- Fujita, A., Aoki, N.P., Shinmachi, D., Matsuura, M., Tsuchiya, S., Shiota, M., Ono, T., Yamada, I., Aoki-Kinoshita, K.F., 2021. The international glycan repository GlycoYouCan version 3.0. *Nucleic Acids Res.* 49 (D1), D1529–D1533. <https://doi.org/10.1093/nar/gkaa947>.
- Futakawa, S., Nara, K., Miyajima, M., Kuno, A., Ito, H., Kaji, H., Shirota, K., Honda, T., Tohyama, Y., Hoshi, K., Hanzawa, Y., Kitazume, S., Imamaki, R., Furukawa, K., Tadaki, K., Arai, H., Yuasa, T., Abe, M., Arai, H., Narimatsu, H., Hashimoto, Y., 2012. A unique N-glycan on human transferrin in CSF: a possible biomarker for iNPH. *Neurobiol. Aging* 33 (8), 1807–1815. <https://doi.org/10.1016/j.neurobiolaging.2011.02.023>.
- Gaunitz, S., Tjernberg, L.O., Schedin-Weiss, S., 2021a. The N-glycan profile in cortex and hippocampus is altered in Alzheimer disease. *J. Neurochem.* 159 (2), 292–304. <https://doi.org/10.1111/jnc.15202>.
- Gaunitz, S., Tjernberg, L.O., Schedin-Weiss, S., 2021b. What can N-glycomics and N-glycoproteomics of cerebrospinal fluid tell us about Alzheimer disease. *Biomolecules* 11 (6). <https://doi.org/10.3390/biom11060858>.
- Ghersi-Egea, J.F., Strazielle, N., Catala, M., Silva-Vargas, V., Doetsch, F., Engelhardt, B., 2018. Molecular anatomy and functions of the choroidal blood-cerebrospinal fluid barrier in health and disease. *Acta Neuropathol.* 135 (3), 337–361. <https://doi.org/10.1007/s00401-018-1807-1>.
- Giussani, P., Prinetti, A., Tringali, C., 2021. The role of sphingolipids in myelination and myelin stability and their involvement in childhood and adult demyelinating disorders. *J. Neurochem.* 156 (4), 403–414. <https://doi.org/10.1111/jnc.15133>.
- Goncalves, M., Tillack, L., de Carvalho, M., Pinto, S., Conradt, H.S., Costa, J., 2015. Phosphoneurofilament heavy chain and N-glycomics from the cerebrospinal fluid in amyotrophic lateral sclerosis. *Clin. Chim. Acta* 438, 342–349. <https://doi.org/10.1016/j.cca.2014.09.011>.
- Gouveia, R., Schaffer, L., Papp, S., Gammel, N., Kandzia, S., Head, S.R., Kleene, R., Schachner, M., Conradt, H.S., Costa, J., 2012. Expression of glycomics in differentiating human NT2N neurons. Downregulation of fucosyltransferase 9 leads to decreased Lewis(x) levels and impaired neurite outgrowth. *Biochim. Biophys. Acta* 1820 (12), 2007–2019. <https://doi.org/10.1016/j.bbagen.2012.09.004>.
- Gouveia, R.M., Gomes, C.M., Sousa, M., Alves, P.M., Costa, J., 2008. Kinetic analysis of L1 homophilic interaction: role of the first four immunoglobulin domains and implications on binding mechanism. *J. Biol. Chem.* 283 (42), 28038–28047. <https://doi.org/10.1074/jbc.M804991200>.
- Goyallon, A., Cholet, S., Chapelle, M., Junot, C., Fenaile, F., 2015. Evaluation of a combined glycomics and glycoproteomics approach for studying the major glycoproteins present in biofluids: application to cerebrospinal fluid. *Rapid Commun. Mass Spectrom.* 29 (6), 461–473. <https://doi.org/10.1002/rcm.7125>.
- Halim, A., Ruetschi, U., Larson, G., Nilsson, J., 2013. LC-MS/MS characterization of O-glycosylation sites and glycan structures of human cerebrospinal fluid glycoproteins. *J. Proteome Res.* 12 (2), 573–584. <https://doi.org/10.1021/pr300963h>.

- Hart, G.W., 2019. Nutrient regulation of signaling and transcription. *J. Biol. Chem.* 294 (7), 2211–2231. <https://doi.org/10.1074/jbc.AW119.003226>.
- Hastings, N.B., Wang, X., Song, L., Butts, B.D., Grotz, D., Hargreaves, R., Fred Hess, J., Hong, K.K., Huang, C.R., Hyde, L., Laverty, M., Lee, J., Levitan, D., Lu, S.X., Maguire, M., Mahadomrongkul, V., McEachern, E.J., Ouyang, X., Rosahl, T.W., Selnick, H., Stanton, M., Terracina, G., Vocadlo, D.J., Wang, G., Duffy, J.L., Parker, E.M., Zhang, L., 2017. Inhibition of O-GlcNAc leads to elevation of O-GlcNAc tau and reduction of tauopathy and cerebrosplinal fluid tau in rTg4510 mice. *Mol. Neurodegener.* 12 (1), 39. <https://doi.org/10.1186/s13024-017-0181-0>.
- Hawkinson, T.R., Clarke, H.A., Young, L.E.A., Conroy, L.R., Markussen, K.H., Kerch, K. M., Johnson, L.A., Nelson, P.T., Wang, C., Allison, D.B., Gentry, M.S., Sun, R.C., 2022. In situ spatial glycomic imaging of mouse and human Alzheimer's disease brains. *Alzheimers Dement.* 18 (10), 1721–1735. <https://doi.org/10.1002/alz.12523>.
- Helm, J., Grunwald-Gruber, C., Thader, A., Urteil, J., Fuhrer, J., Stenitzer, D., Maresch, D., Neumann, L., Pabst, M., Altmann, F., 2021. Bisecting lewis X in hybrid-type N-glycans of human brain revealed by deep structural glycomics. *Anal. Chem.* 93 (45), 15175–15182. <https://doi.org/10.1021/acs.analchem.1c03793>.
- Helm, J., Hirtler, L., Altmann, F., 2022. Towards mapping of the human brain N-glycome with standardized graphitic carbon chromatography. *Biomolecules* 12 (1). <https://doi.org/10.3390/biom12010085>.
- Herget, S., Ranzinger, R., Maass, K., Lieth, C.W., 2008. GlycoCT-a unifying sequence format for carbohydrates. *Carbohydr. Res.* 343 (12), 2162–2171. <https://doi.org/10.1016/j.carres.2008.03.011>.
- Hoffmann, A., Nimtz, M., Wurster, U., Conrad, H.S., 1994. Carbohydrate structures of beta-trace protein from human cerebrospinal fluid: evidence for "brain-type" N-glycosylation. *J. Neurochem.* 63 (6), 2185–2196. <https://doi.org/10.1046/j.1471-4159.1994.63062185.x>.
- Hoffmann, A., Nimtz, M., Getzlaff, R., Conrad, H.S., 1995. 'Brain-type' N-glycosylation of asialo-transferrin from human cerebrospinal fluid. *FEBS Lett.* 359 (2–3), 164–168. [https://doi.org/10.1016/0014-5793\(95\)00034-7](https://doi.org/10.1016/0014-5793(95)00034-7).
- Hoffmann, A., Gath, U., Gross, G., Lauber, J., Getzlaff, R., Hellwig, S., Galla, H.J., Conrad, H.S., 1996. Constitutive secretion of beta-trace protein by cultivated porcine choroid plexus epithelial cells: elucidation of its complete amino acid and cDNA sequences. *J. Cell Physiol.* 169 (2), 235–241. [https://doi.org/10.1002/\(SICI\)1097-4652\(199611\)169:2<235::AID-JCP2>3.0.CO;2-P](https://doi.org/10.1002/(SICI)1097-4652(199611)169:2<235::AID-JCP2>3.0.CO;2-P).
- Hoshi, K., Matsumoto, Y., Ito, H., Saito, K., Honda, T., Yamaguchi, Y., Hashimoto, Y., 2017. A unique glycan-isoform of transferrin in cerebrospinal fluid: a potential diagnostic marker for neurological diseases. *Biochim. Biophys. Acta Gen. Subj.* 1861 (10), 2473–2478. <https://doi.org/10.1016/j.bbagen.2017.07.005>.
- Hoshi, K., Ito, H., Abe, E., Fuwa, T.J., Kanno, M., Murakami, Y., Abe, M., Murakami, T., Yoshihara, A., Ugawa, Y., Saito, T., Saido, T.C., Matsumoto, K., Yamaguchi, Y., Furukawa, K., Arai, H., Kanai, M., Miyajima, M., Arai, H., Ogawa, N., Akatsu, H., Hashizume, Y., Tateno, H., Honda, T., Hashimoto, Y., 2021. Transferrin biosynthesized in the brain is a novel biomarker for Alzheimer's disease. *Metabolites* 11 (9). <https://doi.org/10.3390/metab11090616>.
- Huang, C.W., Rust, N.C., Wu, H.F., Yin, A., Zeltner, N., Yin, H., Hart, G.W., 2023. Low glucose induced Alzheimer's disease-like biochemical changes in human induced pluripotent stem cell-derived neurons is due to dysregulated O-GlcNAcylation. *Alzheimers Dement.* <https://doi.org/10.1002/alz.13058>.
- Ishii, A., Ikeda, T., Hitoshi, S., Fujimoto, I., Torii, T., Sakuma, K., Nakakita, S., Hase, S., Ikenaka, K., 2007. Developmental changes in the expression of glycogenes and the content of N-glycans in the mouse cerebral cortex. *Glycobiology* 17 (3), 261–276. <https://doi.org/10.1093/glycob/cwl076>.
- Jahncke, J.N., Wright, K.M., 2023. The many roles of dystroglycan in nervous system development and function: Dystroglycan and neural circuit development: dystroglycan and neural circuit development. *Dev. Dyn.* 252 (1), 61–80. <https://doi.org/10.1002/dvdy.516>.
- Jauhar, S., Johnstone, M., McKenna, P.J., 2022. Schizophrenia. *Lancet* 399 (10323), 473–486. [https://doi.org/10.1016/S0140-6736\(21\)01730-X](https://doi.org/10.1016/S0140-6736(21)01730-X).
- Karlsson, I., Ndreu, L., Quaranta, A., Thorsen, G., 2017. Glycosylation patterns of selected proteins in individual serum and cerebrospinal fluid samples. *J. Pharm. Biomed. Anal.* 145, 431–439. <https://doi.org/10.1016/j.jpba.2017.04.040>.
- Kawahara, R., Chernykh, A., Alagesan, K., Bern, M., Cao, W., Chalkley, R.J., Cheng, K., Choo, M.S., Edwards, N., Goldman, R., Hoffmann, M., Hu, Y., Huang, Y., Kim, J.Y., Kletter, D., Lique, B., Liu, M., Mechref, Y., Meng, B., Neelamegham, S., Nguyen-Khuong, T., Nilsson, J., Pap, A., Park, G.W., Parker, B.L., Pegg, C.L., Penninger, J.M., Phung, T.K., Pioch, M., Rapp, E., Sakalli, E., Sanda, M., Schulz, B.L., Scott, N.E., Sofronov, G., Stadlmann, J., Vakhrushev, S.Y., Woo, C.M., Wu, H.Y., Yang, P., Ying, W., Zhang, H., Zhang, Y., Zhao, J., Zaia, J., Haslam, S.M., Palmisano, G., Yoo, J.S., Larson, G., Khoo, K.H., Medzhradszky, K.F., Kolarich, D., Packer, N.H., Thaysen-Andersen, M., 2021. Community evaluation of glycoproteomics informatics solutions reveals high-performance search strategies for serum glycopeptide analysis. *Nat. Methods* 18 (11), 1304–1316. <https://doi.org/10.1038/s41592-021-01309-x>.
- Kellman, B.P., Lewis, N.E., 2021. Big-data glycomics: tools to connect glycan biosynthesis to extracellular communication. *Trends Biochem. Sci.* 46 (4), 284–300. <https://doi.org/10.1016/j.tibs.2020.10.004>.
- Khalil, M., Teunissen, C.E., Otto, M., Piehl, F., Sormani, M.P., Gattringer, T., Barro, C., Kappos, L., Comabella, M., Fazekas, F., Petzold, A., Blennow, K., Zetterberg, H., Kuhle, J., 2018. Neurofilaments as biomarkers in neurological disorders. *Nat. Rev. Neurol.* 14 (10), 577–589. <https://doi.org/10.1038/s41582-018-0058-z>.
- Khanna, M.R., Kovalevich, J., Lee, V.M., Trojanowski, J.Q., Brunden, K.R., 2016. Therapeutic strategies for the treatment of tauopathies: Hopes and challenges. *Alzheimers Dement.* 12 (10), 1051–1065. <https://doi.org/10.1016/j.jalz.2016.06.006>.
- Kippe, J.M., Mueller, T.M., Haroutunian, V., Meador-Woodruff, J.H., 2015. Abnormal N-acetylglucosaminyltransferase expression in prefrontal cortex in schizophrenia. *Schizophr. Res.* 166 (1–3), 219–224. <https://doi.org/10.1016/j.schres.2015.06.002>.
- Kizuka, Y., Taniguchi, N., 2018. Neural functions of bisecting GlcNAc. *Glycoconj. J.* 35 (4), 345–351. <https://doi.org/10.1007/s10719-018-9829-4>.
- Kizuka, Y., Kitazume, S., Fujinawa, R., Saito, T., Iwata, N., Saido, T.C., Nakano, M., Yamaguchi, Y., Hashimoto, Y., Staufenbiel, M., Hatsuta, H., Murayama, S., Many, H., Endo, T., Taniguchi, N., 2015. An aberrant sugar modification of BACE1 blocks its lysosomal targeting in Alzheimer's disease. *EMBO Mol. Med.* 7 (2), 175–189. <https://doi.org/10.15252/emmm.201404438>.
- Klaric, T.S., Salopek, M., Micek, V., Gornik Kljaic, O., Lauc, G., 2021. Post-natal developmental changes in the composition of the rat neocortical N-glycome. *Glycobiology* 31 (5), 636–648. <https://doi.org/10.1093/glycob/cwaa108>.
- Krusius, T., Finne, J., 1977. Structural features of tissue glycoproteins. Fractionation and methylation analysis of glycopeptides derived from rat brain, kidney and liver. *Eur. J. Biochem.* 78 (2), 369–379. <https://doi.org/10.1111/j.1432-1033.1977.tb11749.x>.
- Lageveen-Kammeijer, G.S.M., Kuster, B., Reusch, D., Wührer, M., 2022. High sensitivity glycomics in biomedicine. *Mass Spectrom. Rev.* 41 (6), 1014–1039. <https://doi.org/10.1002/mas.21730>.
- Lal, K., Bermeo, R., Perez, S., 2020. Computational tools for drawing, building and displaying carbohydrates: a visual guide. *Beilstein J. Org. Chem.* 16, 2448–2468. <https://doi.org/10.3762/bjoc.16.199>.
- Larsen, I.S.B., Narimatsu, Y., Clausen, H., Joshi, H.J., Halim, A., 2019. Multiple distinct O-Mannosylation pathways in eukaryotes. *Curr. Opin. Struct. Biol.* 56, 171–178. <https://doi.org/10.1016/j.sbi.2019.03.003>.
- Lee, B.E., Kim, H.Y., Kim, H.J., Jeong, H., Kim, B.G., Lee, H.E., Lee, J., Kim, H.B., Lee, S. E., Yang, Y.R., Yi, E.C., Hanover, J.A., Myung, K., Suh, P.G., Kwon, T., Kim, J.I., 2020a. O-GlcNAcylation regulates dopamine neuron function, survival and degeneration in Parkinson disease. *Brain* 143 (12), 3699–3716. <https://doi.org/10.1093/brain/awaa320>.
- Lee, B.E., Suh, P.G., Kim, J.I., 2021. O-GlcNAcylation in health and neurodegenerative diseases. *Exp. Mol. Med.* 53 (11), 1674–1682. <https://doi.org/10.1038/s12276-021-00709-5>.
- Lee, J., Ha, S., Kim, M., Kim, S.W., Yun, J., Ozcan, S., Hwang, H., Ji, I.J., Yin, D., Webster, M.J., Shannon Weickert, C., Kim, J.H., Yoo, J.S., Grimm, R., Bahn, S., Shin, H.S., An, H.J., 2020b. Spatial and temporal diversity of glycome expression in mammalian brain. *Proc. Natl. Acad. Sci. USA* 117 (46), 28743–28753. <https://doi.org/10.1073/pnas.2014207117>.
- Leeman, M., Choi, J., Hansson, S., Storm, M.U., Nilsson, L., 2018. Proteins and antibodies in serum, plasma, and whole blood-size characterization using asymmetrical flow field-flow fractionation (AF4). *Anal. Bioanal. Chem.* 410 (20), 4867–4873. <https://doi.org/10.1007/s00216-018-1127-2>.
- Lehnert, S., Costa, J., de Carvalho, M., Kirby, J., Kuzma-Kozakiewicz, M., Morelli, C., Robberecht, W., Shaw, P., Silani, V., Steinacker, P., Tumani, H., Van Damme, P., Ludolph, A., Otto, M., 2014. Multicentre quality control evaluation of different biomarker candidates for amyotrophic lateral sclerosis. *Amyotroph. Lateral Scler. Front. Degener.* 15 (5–6), 344–350. <https://doi.org/10.3109/21678421.2014.884592>.
- Leuzy, A., Mattsson-Carlgen, N., Palmqvist, S., Janelidze, S., Dage, J.L., Hansson, O., 2022. Blood-based biomarkers for Alzheimer's disease. *EMBO Mol. Med.* 14 (1), e14408. <https://doi.org/10.15252/emmm.202114408>.
- Lewis, A.L., Toukach, P., Bolton, E., Chen, X., Frank, M., Lutteke, T., Knirel, Y., Schoenhofen, I., Varki, A., Vinogradov, E., Woods, R.J., Zachara, N., Zhang, J., Kamerling, J.P., Neelamegham, S., Group, S.D., 2023. Cataloging natural sialic acids and other nonulosonic acids (NuOs), and their representation using the Symbol Nomenclature for Glycans. *Glycobiology* 33 (2), 99–103. <https://doi.org/10.1093/glycob/cwac072>.
- Li, C., Yang, T., Ou, R., Shang, H., 2021. Overlapping genetic architecture between schizophrenia and neurodegenerative disorders. *Front. Cell Dev. Biol.* 9, 797072. <https://doi.org/10.3389/fcell.2021.797072>.
- Liu, F., Iqbal, K., Grundke-Iqbal, I., Hart, G.W., Gong, C.X., 2004. O-GlcNAcylation regulates phosphorylation of tau: a mechanism involved in Alzheimer's disease. *Proc. Natl. Acad. Sci. USA* 101 (29), 10804–10809. <https://doi.org/10.1073/pnas.0400348101>.
- Liu, F., Shi, J., Tanimukai, H., Gu, J., Gu, J., Grundke-Iqbal, I., Iqbal, K., Gong, C.X., 2009. Reduced O-GlcNAcylation links lower brain glucose metabolism and tau pathology in Alzheimer's disease. *Brain* 132 (Pt 7), 1820–1832. <https://doi.org/10.1093/brain/awp099>.
- Ludemann, N., Clement, A., Hans, V.H., Leschik, J., Behl, C., Brandt, R., 2005. O-glycosylation of the tail domain of neurofilament protein M in human neurons and in spinal cord tissue of a rat model of amyotrophic lateral sclerosis (ALS). *J. Biol. Chem.* 280 (36), 31648–31658. <https://doi.org/10.1074/jbc.M504395200>.
- Maass, K., Ranzinger, R., Geyer, H., von der Lieth, C.W., Geyer, R., 2007. "Glycopeakfinder"—de novo composition analysis of glycoconjugates. *Proteomics* 7 (24), 4435–4444. <https://doi.org/10.1002/pmic.200700253>.
- Machado, E., Kandzia, S., Carilho, R., Altevogt, P., Conrad, H.S., Costa, J., 2011. N-Glycosylation of total cellular glycoproteins from the human ovarian carcinoma SKOV3 cell line and of recombinantly expressed human erythropoietin. *Glycobiology* 21 (3), 376–386. <https://doi.org/10.1093/glycob/cwq170>.
- Mackmull, M.T., Nagel, L., Sesterhenn, F., Muntel, J., Grossbach, J., Stalder, P., Bruderer, R., Reiter, L., van de Berg, W.D.J., de Souza, N., Beyer, A., Picotti, P., 2022. Global, in situ analysis of the structural proteome in individuals with Parkinson's disease to identify a new class of biomarker. *Nat. Struct. Mol. Biol.* 29 (10), 978–989. <https://doi.org/10.1038/s41594-022-00837-0>.
- Mariethoz, J., Alocci, D., Gastaldello, A., Hurlacher, O., Gasteiger, E., Rojas-Macias, M., Karlsson, N.G., Packer, N.H., Lisacek, F., 2018. Glycomics@ExpASY: Bridging the

- Gap. *Mol. Cell Proteom.* 17 (11), 2164–2176. <https://doi.org/10.1074/mcp.RA118.000799>.
- Massa, F., Halbgebauer, S., Barba, L., Oeckl, P., Gomez de San Jose, N., Bauckneht, M., Lanfranchi, F., Vigo, T., Arnaldi, D., Pardini, M., Morbelli, S., Chincarini, A., Barthel, H., Otto, M., Nobili, F., 2022. Exploring the brain metabolic correlates of process-specific CSF biomarkers in patients with MCI due to Alzheimer's disease: preliminary data. *Neurobiol. Aging* 117, 212–221. <https://doi.org/10.1016/j.neurobiolaging.2022.03.019>.
- Mathies, I., Abrahams, J.L., Jensen, P., Oliveira, T., Kolarich, D., Larsen, M.R., 2021. N-Glycosylation in isolated rat nerve terminals. *Mol. Omics* 17 (4), 517–532. <https://doi.org/10.1039/d0mo00044b>.
- McLaughlin, R.L., Schijven, D., van Rheeën, W., van Eijk, K.R., O'Brien, M., Kahn, R.S., Ophoff, R.A., Goris, A., Bradley, D.G., Al-Chalabi, A., van den Berg, L.H., Luykx, J.J., Hardiman, O., Veldink, J.H., Project Min, E.G.C., Schizophrenia Working Group of the Psychiatric Genomics, C., 2017. Genetic correlation between amyotrophic lateral sclerosis and schizophrenia. *Nat. Commun.* 8, 14774. <https://doi.org/10.1038/ncomms14774>.
- Mealer, R.G., Jenkins, B.G., Chen, C.Y., Daly, M.J., Ge, T., Lehoux, S., Marquardt, T., Palmer, C.D., Park, J.H., Parsons, P.J., Sackstein, R., Williams, S.E., Cummings, R.D., Scolnick, E.M., Smoller, J.W., 2020a. The schizophrenia risk locus in SLC39A8 alters brain metal transport and plasma glycosylation. *Sci. Rep.* 10 (1), 13162. <https://doi.org/10.1038/s41598-020-70108-9>.
- Mealer, R.G., Williams, S.E., Daly, M.J., Scolnick, E.M., Cummings, R.D., Smoller, J.W., 2020b. Glycobiology and schizophrenia: a biological hypothesis emerging from genomic research. *Mol. Psychiatry* 25 (12), 3129–3139. <https://doi.org/10.1038/s41380-020-0753-1>.
- Mealer, R.G., Williams, S.E., Noel, M., Yang, B., D'Souza, A.K., Nakata, T., Graham, D.B., Creasey, E.A., Cetinbas, M., Sadreyev, R.I., Scolnick, E.M., Woo, C.M., Smoller, J.W., Xavier, R.J., Cummings, R.D., 2022. The schizophrenia-associated variant in SLC39A8 alters protein glycosylation in the mouse brain. *Mol. Psychiatry* 27 (3), 1405–1415. <https://doi.org/10.1038/s41380-022-01490-1>.
- Mehta, A.Y., Cummings, R.D., 2020. GlycoGlyph: a glycan visualizing, drawing and naming application. *Bioinformatics* 36 (11), 3613–3614. <https://doi.org/10.1093/bioinformatics/btaa190>.
- Moh, E.S.X., Nishtala, K., Iqbal, S., Staikopoulos, V., Kapur, D., Hutchinson, M.R., Packer, N.H., 2022. Long-term intrathecal administration of morphine vs. baclofen: Differences in CSF glycoconjugate profiles using multiglycomics. *Glycobiology* 32 (1), 50–59. <https://doi.org/10.1093/glycob/cwab098>.
- Moll, T., Shaw, P.J., Cooper-Knock, J., 2020. Disrupted glycosylation of lipids and proteins is a cause of neurodegeneration. *Brain* 143 (5), 1332–1340. <https://doi.org/10.1093/brain/awz358>.
- Mueller, T.M., Meador-Woodruff, J.H., 2020. Post-translational protein modifications in schizophrenia. *NPJ Schizophr.* 6 (1), 5. <https://doi.org/10.1038/s41537-020-0093-9>.
- Murrey, H.E., Ficarro, S.B., Krishnamurthy, C., Domino, S.E., Peters, E.C., Hsieh-Wilson, L.C., 2009. Identification of the plasticity-relevant fucose-alpha(1-2)-galactose proteome from the mouse olfactory bulb. *Biochemistry* 48 (30), 7261–7270. <https://doi.org/10.1021/bi900640x>.
- Nakano, M., Mishra, S.K., Tokoro, Y., Sato, K., Nakajima, K., Yamaguchi, Y., Taniguchi, N., Kizuka, Y., 2019. Bisecting GlcNAc Is a General Suppressor of Terminal Modification of N-glycan. *Mol. Cell Proteom.* 18 (10), 2044–2057. <https://doi.org/10.1074/mcp.RA119.001534>.
- Nakic, N., Tran, T.H., Novokmet, M., Andreoletti, O., Lauc, G., Legname, G., 2021. Site-specific analysis of N-glycans from different sheep prion strains. *PLoS Pathog.* 17 (2), e1009232. <https://doi.org/10.1371/journal.ppat.1009232>.
- Narayan, S., Head, S.R., Gilmartin, T.J., Dean, B., Thomas, E.A., 2009. Evidence for disruption of sphingolipid metabolism in schizophrenia. *J. Neurosci. Res.* 87 (1), 278–288. <https://doi.org/10.1002/jnr.21822>.
- Neelamegham, S., Aoki-Kinoshita, K., Bolton, E., Frank, M., Lisacek, F., Lutjke, T., O'Boyle, N., Packer, N.H., Stanley, P., Toutkach, P., Varki, A., Woods, R.R., Group, S. D., 2019. Updates to the Symbol Nomenclature for Glycans guidelines. *Glycobiology* 29 (9), 620–624. <https://doi.org/10.1093/glycob/cwz045>.
- Nilsson, L., Ruetschi, U., Halim, A., Hesse, C., Carlsohn, E., Brinkmalm, G., Larson, G., 2009. Enrichment of glycopeptides for glycan structure and attachment site identification. *Nat. Methods* 6 (11), 809–811. <https://doi.org/10.1038/nmeth.1392>.
- Nishihara, S., Iwasaki, H., Nakajima, K., Togayachi, A., Ikehara, Y., Kudo, T., Kushi, Y., Furuya, A., Shitara, K., Narimatsu, H., 2003. Alpha1,3-fucosyltransferase IX (Fut9) determines Lewis X expression in brain. *Glycobiology* 13 (6), 445–455. <https://doi.org/10.1093/glycob/cwg048>.
- O'Brien, J.S., Sampson, E.L., 1965. Lipid composition of the normal human brain: gray matter, white matter, and myelin. *J. Lipid Res.* 6 (4), 537–544.
- Oeckl, P., Jardel, C., Salachas, F., Lamari, F., Andersen, P.M., Bowser, R., de Carvalho, M., Costa, J., van Damme, P., Gray, E., Grosskreutz, J., Hernandez-Barral, M., Herukka, S.K., Huss, A., Jeromin, A., Kirby, J., Kuzma-Kozakiewicz, M., Amador Mdell, M., Mora, J.S., Morelli, C., Muckova, P., Petri, S., Poesen, K., Rhode, H., Rikardsson, A.K., Robberecht, W., Rodriguez Mahillo, A.I., Shaw, P., Silani, V., Steinacker, P., Turner, M.R., Tuzun, E., Yetimler, B., Ludolph, A.C., Otto, M., 2016. Multicenter validation of CSF neurofilaments as diagnostic biomarkers for ALS. *Amyotroph. Lateral Scler. Front. Degener.* 17 (5–6), 404–413. <https://doi.org/10.3109/21678421.2016.1167913>.
- Okamoto, Y., Omichi, K., Yamanaka, S., Ikenaka, K., Hase, S., 1999. Conversion of brain-specific complex type sugar chains by N-acetyl-beta-D-hexosaminidase B. *J. Biochem.* 125 (3), 537–540. <https://doi.org/10.1093/oxfordjournals.jbchem.a022318>.
- Okerblom, J., Varki, A., 2017. Biochemical, cellular, physiological, and pathological consequences of human loss of N-glycolylneuraminic acid. *Chembiochem* 18 (13), 1155–1171. <https://doi.org/10.1002/cbic.201700077>.
- Orsburn, B.C., 2021. Proteome discoverer-a community enhanced data processing suite for protein informatics. *Proteomes* 9 (1). <https://doi.org/10.3390/proteomes9010015>.
- Otaki, M., Hirane, N., Natsume-Kitatani, Y., Nogami Itoh, M., Shindo, M., Kurebayashi, Y., Nishimura, S.I., 2022. Mouse tissue glycome atlas 2022 highlights inter-organ variation in major N-glycan profiles. *Sci. Rep.* 12 (1), 17804. <https://doi.org/10.1038/s41598-022-21758-4>.
- Otto, M., Bowser, R., Turner, M., Berry, J., Brettschneider, J., Connor, J., Costa, J., Cudkovic, M., Glass, J., Jahn, O., Lehnert, S., Malaspina, A., Parnetti, L., Petzold, A., Shaw, P., Sherman, A., Steinacker, P., Sussmuth, S., Teunissen, C., Tumani, H., Wuolikainen, A., Ludolph, A., Volcano, G., 2012. Roadmap and standard operating procedures for biobanking and discovery of neurochemical markers in ALS. *Amyotroph. Lateral Scler.* 13 (1), 1–10. <https://doi.org/10.3109/17482968.2011.627589>.
- Palmigiano, A., Barone, R., Sturiale, L., Sanfilippo, C., Bua, R.O., Romeo, D.A., Messina, A., Capuana, M.L., Maci, T., Le Pira, F., Zappia, M., Garozzo, D., 2016. CSF N-glycoproteomics for early diagnosis in Alzheimer's disease. *J. Proteom.* 131, 29–37. <https://doi.org/10.1016/j.jpro.2015.10.006>.
- Park, J.H., Hogrebe, M., Gruneberg, M., DuChesne, I., von der Heiden, A.L., Reunert, J., Schlingmann, K.P., Boycott, K.M., Beaulieu, C.L., Mhanni, A.A., Innes, A.M., Hortnagel, K., Biskup, S., Gleixner, E.M., Kurlmann, G., Fiedler, B., Omran, H., Rutsch, F., Wada, Y., Tsiakas, K., Santer, R., Nebert, D.W., Rust, S., Marquardt, T., 2015. SLC39A8 deficiency: a disorder of manganese transport and glycosylation. *Am. J. Hum. Genet.* 97 (6), 894–903. <https://doi.org/10.1016/j.ajhg.2015.11.003>.
- Parkin, G.M., Udawela, M., Gibbons, A., Dean, B., 2018. Glutamate transporters, EAAT1 and EAAT2, are potentially important in the pathophysiology and treatment of schizophrenia and affective disorders. *World J. Psychiatry* 8 (2), 51–63. <https://doi.org/10.5498/wjpv.8.2.51>.
- Peng, W., Kobeissy, F., Mondello, S., Barsa, C., Mechref, Y., 2022. MS-based glycomics: An analytical tool to assess nervous system diseases. *Front. Neurosci.* 16, 1000179. <https://doi.org/10.3389/fnins.2022.1000179>.
- Perez, S., Mulloy, B., 2005. Prospects for glycoinformatics. *Curr. Opin. Struct. Biol.* 15 (5), 517–524. <https://doi.org/10.1016/j.sbi.2005.08.005>.
- Peri, S., Steen, H., Pandey, A., 2001. GPMW—a software tool for analyzing proteins and peptides. *Trends Biochem. Sci.* 26 (11), 687–689. [https://doi.org/10.1016/s0968-0004\(01\)01954-5](https://doi.org/10.1016/s0968-0004(01)01954-5).
- Permanne, B., Sand, A., Ousson, S., Neny, M., Hantson, J., Schubert, R., Wiessner, C., Quattropiani, A., Beher, D., 2022. O-GlcNAcase inhibitor ASN90 is a multimodal drug candidate for tau and alpha-synuclein proteinopathies. *ACS Chem. Neurosci.* 13 (8), 1296–1314. <https://doi.org/10.1021/acscchemneuro.2c00057>.
- Pinho, T.S., Verde, D.M., Correia, S.C., Cardoso, S.M., Moreira, P.I., 2018. O-GlcNAcylation and neuronal energy status: Implications for Alzheimer's disease. *Ageing Res. Rev.* 46, 32–41. <https://doi.org/10.1016/j.arr.2018.05.003>.
- Poux, S., Arighi, C.N., Magrane, M., Bateman, A., Wei, C.H., Lu, Z., Boutet, E., Bye, A.J. H., Famiglietti, M.L., Roehert, B., UniProt Consortium, T., 2017. On expert curation and scalability: UniProtKB/Swiss-Prot as a case study. *Bioinformatics* 33 (21), 3454–3460. <https://doi.org/10.1093/bioinformatics/btx439>.
- Ranzinger, R., York, W.S., 2015. GlycoMeDB. *Methods Mol. Biol.* 1273, 109–124. https://doi.org/10.1007/978-1-4939-2343-4_8.
- Rebello, A.L., Gubinelli, F., Roost, P., Jan, C., Brouillet, E., Van Camp, N., Drake, R.R., Saldova, R., Pandit, A., 2021. Complete spatial characterisation of N-glycosylation upon striatal neuroinflammation in the rodent brain. *J. Neuroinflamm.* 18 (1), 116. <https://doi.org/10.1186/s12974-021-02163-6>.
- Rebello, A.L., Chevalier, M.T., Russo, L., Pandit, A., 2022. Role and therapeutic implications of protein glycosylation in neuroinflammation. *Trends Mol. Med.* 28 (4), 270–289. <https://doi.org/10.1016/j.tmm.2022.01.004>.
- Reily, C., Stewart, T.J., Renfrow, M.B., Novak, J., 2019. Glycosylation in health and disease. *Nat. Rev. Nephrol.* 15 (6), 346–366. <https://doi.org/10.1038/s41581-019-0129-4>.
- Riley, N.M., Hebert, A.S., Westphall, M.S., Coon, J.J., 2019. Capturing site-specific heterogeneity with large-scale N-glycoproteome analysis. *Nat. Commun.* 10 (1), 1311. <https://doi.org/10.1038/s41467-019-09222-w>.
- Robin, T., Mariethoz, J., Lisacek, F., 2020. Examining and fine-tuning the selection of glycan compositions with glyconnect compozitor. *Mol. Cell Proteom.* 19 (10), 1602–1618. <https://doi.org/10.1074/mcp.RA120.002041>.
- Rojas-Macias, M.A., Mariethoz, J., Andersson, P., Jin, C., Venkatakrisnan, V., Aoki, N. P., Shinmachi, D., Ashwood, C., Madunic, K., Zhang, T., Miller, R.L., Horlacher, O., Struwe, W.B., Watanabe, Y., Okuda, S., Levander, F., Kolarich, D., Rudd, P.M., Wuhrer, M., Kettner, C., Packer, N.H., Aoki-Kinoshita, K.F., Lisacek, F., Karlsson, N. G., 2019. Towards a standardized bioinformatics infrastructure for N- and O-glycomics. *Nat. Commun.* 10 (1), 3275. <https://doi.org/10.1038/s41467-019-11131-x>.
- Samal, J., Saldova, R., Rudd, P.M., Pandit, A., O'Flaherty, R., 2020. Region-specific characterization of N-glycans in the striatum and substantia nigra of an adult rodent brain. *Anal. Chem.* 92 (19), 12842–12851. <https://doi.org/10.1021/acs.analchem.0c01206>.
- Sandau, U.S., McFarland, T.J., Smith, S.J., Galasko, D.R., Quinn, J.F., Saugstad, J.A., 2022. Differential effects of APOE genotype on MicroRNA cargo of cerebrospinal fluid extracellular vesicles in females with Alzheimer's disease compared to males. *Front. Cell Dev. Biol.* 10, 864022. <https://doi.org/10.3389/fcell.2022.864022>.
- Sato, C., Kitajima, K., 2013. Disialic, oligosialic and polysialic acids: distribution, functions and related disease. *J. Biochem.* 154 (2), 115–136. <https://doi.org/10.1093/jb/mvt057>.

- Schedin-Weiss, S., Gaunitz, S., Sui, P., Chen, Q., Haslam, S.M., Blennow, K., Winblad, B., Dell, A., Tjernberg, L.O., 2020. Glycan biomarkers for Alzheimer disease correlate with T-tau and P-tau in cerebrospinal fluid in subjective cognitive impairment. *FEBS J.* 287 (15), 3221–3234. <https://doi.org/10.1111/febs.15197>.
- Schieven, G.L., Blank, A., Dekker, C.A., 1982. Ribonucleases of human cerebrospinal fluid: detection of altered glycosylation relative to their serum counterparts. *Biochemistry* 21 (21), 5148–5155. <https://doi.org/10.1021/bi00264a007>.
- Schilde, L.M., Kosters, S., Steinbach, S., Schork, K., Eisenacher, M., Galozzi, S., Turewicz, M., Barkovits, K., Mollenhauer, B., Marcus, K., May, C., 2018. Protein variability in cerebrospinal fluid and its possible implications for neurological protein biomarker research. *PLoS One* 13 (11), e0206478. <https://doi.org/10.1371/journal.pone.0206478>.
- Schizophrenia Working Group of the Psychiatric Genomics, C., 2014. Biological insights from 108 schizophrenia-associated genetic loci. *Nature* 511 (7510), 421–427. <https://doi.org/10.1038/nature13595>.
- Schnaar, R.L., 2016. Gangliosides of the vertebrate nervous system. *J. Mol. Biol.* 428 (16), 3325–3336. <https://doi.org/10.1016/j.jmb.2016.05.020>.
- Schnaar, R.L., Gerardy-Schahn, R., Hildebrandt, H., 2014. Sialic acids in the brain: gangliosides and polysialic acid in nervous system development, stability, disease, and regeneration. *Physiol. Rev.* 94 (2), 461–518. <https://doi.org/10.1152/physrev.00033.2013>.
- Schreiber, G., Aldred, A.R., Jaworowski, A., Nilsson, C., Achen, M.G., Segal, M.B., 1990. Thyroxine transport from blood to brain via transthyretin synthesis in choroid plexus. *Am. J. Physiol.* 258 (2 Pt 2), R338–R345. <https://doi.org/10.1152/ajpregu.1990.258.2.R338>.
- Schubert, D., 2005. Glucose metabolism and Alzheimer's disease. *Ageing Res. Rev.* 4 (2), 240–257. <https://doi.org/10.1016/j.arr.2005.02.003>.
- Shan, X., Vocadlo, D.J., Krieger, C., 2012. Reduced protein O-glycosylation in the nervous system of the mutant SOD1 transgenic mouse model of amyotrophic lateral sclerosis. *Neurosci. Lett.* 516 (2), 296–301. <https://doi.org/10.1016/j.neulet.2012.04.018>.
- Shaw, L.M., Korecka, M., Figurski, M., Toledo, J., Irwin, D., Hee Kang, J., Trojanowski, J. Q., 2020. Detection of Alzheimer disease pathology in patients using biochemical biomarkers: prospects and challenges for use in clinical practice. *J. Appl. Lab. Med.* 5 (1), 183–193. <https://doi.org/10.1373/jalm.2019.029587>.
- Sheikh, M.O., Halmo, M., Wells, L., 2017. Recent advancements in understanding mammalian O-mannosylation. *Glycobiology* 27 (9), 806–819. <https://doi.org/10.1093/glycob/cwx062>.
- Shen, J., Jia, L., Dang, L., Su, Y., Zhang, J., Xu, Y., Zhu, B., Chen, Z., Wu, J., Lan, R., Hao, Z., Ma, C., Zhao, T., Gao, N., Bai, J., Zhi, Y., Li, J., Zhang, J., Sun, S., 2021. StrucGP: de novo structural sequencing of site-specific N-glycan on glycoproteins using a modularization strategy. *Nat. Methods* 18 (8), 921–929. <https://doi.org/10.1038/s41592-021-01209-0>.
- Shen, Y., You, Y., Xiao, K., Chen, Y., Tian, Z., 2019. Large-scale identification and fragmentation pathways analysis of N-glycans from mouse brain. *J. Am. Soc. Mass Spectrom.* 30 (7), 1254–1261. <https://doi.org/10.1007/s13361-019-02181-y>.
- Sinitskiy, A.V., Stanley, N.H., Hackos, D.H., Hanson, J.E., Sellers, B.D., Pande, V.S., 2017. Computationally discovered potentiating role of glycans on NMDA receptors. *Sci. Rep.* 7, 44578. <https://doi.org/10.1038/srep44578>.
- Song, W., Isaji, T., Nakano, M., Liang, C., Fukuda, T., Gu, J., 2022. O-GlcNAcylation regulates beta1,4-GlcNAc-branched N-glycan biosynthesis via the OGT/SLC35A3/GnT-IV axis. *FASEB J.* 36 (2), e22149. <https://doi.org/10.1096/fj.202101520R>.
- Sorensen, N.V., Orlovskaa-Waast, S., Jeppesen, R., Klein-Petersen, A.W., Christensen, R.H. B., Benros, M.E., 2022. Neuroinflammatory biomarkers in cerebrospinal fluid from 106 patients with recent-onset depression compared with 106 individually matched healthy control subjects. *Biol. Psychiatry* 92 (7), 563–572. <https://doi.org/10.1016/j.biopsych.2022.04.002>.
- Sosicka, P., Ng, B.G., Freeze, H.H., 2022. Chemical therapies for congenital disorders of glycosylation. *ACS Chem. Biol.* 17 (11), 2962–2971. <https://doi.org/10.1021/acscchembio.1c00601>.
- Spik, G., Bayard, B., Fournet, B., Strecker, G., Bouquet, S., Montreuil, J., 1975. Studies on glycoconjugates. LXIV. Complete structure of two carbohydrate units of human serotransferrin. *FEBS Lett.* 50 (3), 296–299. [https://doi.org/10.1016/0014-5793\(75\)80513-8](https://doi.org/10.1016/0014-5793(75)80513-8).
- Stalnaker, S.H., Aoki, K., Lim, J.M., Porterfield, M., Liu, M., Satz, J.S., Buskirk, S., Xiong, Y., Zhang, P., Campbell, K.P., Hu, H., Live, D., Tiemeyer, M., Wells, L., 2011. Glycomic analyses of mouse models of congenital muscular dystrophy. *J. Biol. Chem.* 286 (24), 21180–21190. <https://doi.org/10.1074/jbc.M110.203281>.
- Stanta, J.L., Saldova, R., Struwe, W.B., Byrne, J.C., Leweke, F.M., Rothermund, M., Rahmoune, H., Levin, Y., Guest, P.C., Bahn, S., Rudd, P.M., 2010. Identification of N-glycosylation changes in the CSF and serum in patients with schizophrenia. *J. Proteome Res.* 9 (9), 4476–4489. <https://doi.org/10.1021/pr1002356>.
- Sun, R.C., Young, L.E.A., Bruntz, R.C., Markussen, K.H., Zhou, Z., Conroy, L.R., Hawkinson, T.R., Clarke, H.A., Stanback, A.E., Macedo, J.K.A., Emanuelle, S., Brewer, M.K., Rondon, A.L., Mestas, A., Sanders, W.C., Mahalingam, K.K., Tang, B., Chikwana, V.M., Segvich, D.M., Contreras, C.J., Allenger, E.J., Branson, C.F., Johnson, L.A., Taylor, R.E., Armstrong, D.D., Shaffer, R., Waechter, C.J., Vander Kooij, C.W., DePaoli-Roach, A.A., Roach, P.J., Hurley, T.D., Drake, R.R., Gentry, M.S., 2021. Brain glycogen serves as a critical glucosamine cache required for protein glycosylation. *e1409 Cell Metab.* 33 (7), 1404–1417. <https://doi.org/10.1016/j.cmet.2021.05.003>.
- Suttapitugsakul, S., Stavenhagen, K., Donskaya, S., Bennett, D.A., Mealer, R.G., Seyfried, N.T., Cummings, R.D., 2022. Glycoproteomics landscape of asymptomatic and symptomatic human Alzheimer's disease brain. *Mol. Cell Proteom.* 21 (12), 100433. <https://doi.org/10.1016/j.mcpro.2022.100433>.
- Suzuki, A., 2006. Genetic basis for the lack of N-glycolylneuraminic acid expression in human tissues and its implication to human evolution. *Proc. Jpn Acad. Ser. B Phys. Biol. Sci.* 82 (3), 93–103. <https://doi.org/10.2183/pjab.82.93>.
- Swift, I.J., Sogorb-Esteve, A., Heller, C., Synofzik, M., Otto, M., Graff, C., Galimberti, D., Todd, E., Heslegrave, A.J., van der Ende, E.L., Van Swieten, J.C., Zetterberg, H., Rohrer, J.D., 2021. Fluid biomarkers in frontotemporal dementia: past, present and future. *J. Neurol. Neurosurg. Psychiatry* 92 (2), 204–215. <https://doi.org/10.1136/jnnp-2020-323520>.
- Sytnyk, V., Leshchyn'ska, I., Schachner, M., 2021. Neural glycomics: the sweet side of nervous system functions. *Cell. Mol. Life Sci.* 78 (1), 93–116. <https://doi.org/10.1007/s00018-020-03578-9>.
- Tan, C.X., Eroglu, C., 2021. Cell adhesion molecules regulating astrocyte-neuron interactions. *Curr. Opin. Neurobiol.* 69, 170–177. <https://doi.org/10.1016/j.conb.2021.03.015>.
- Taujale, R., Venkat, A., Huang, L.C., Zhou, Z., Yeung, W., Rasheed, K.M., Li, S., Edison, A. S., Moremen, K.W., Kannan, N., 2020. Deep evolutionary analysis reveals the design principles of fold A glycosyltransferases. *Elife* 9. <https://doi.org/10.7554/eLife.54532>.
- Tena, J., Maezawa, I., Barboza, M., Wong, M., Zhu, C., Alvarez, M.R., Jin, L.W., Zivkovic, A.M., Lebrilla, C.B., 2022. Regio-specific N-glycome and N-glycoproteome map of the elderly human brain with and without Alzheimer's disease. *Mol. Cell Proteom.*, 100427. <https://doi.org/10.1016/j.mcpro.2022.100427>.
- Teunissen, C.E., Petzold, A., Bennett, J.L., Berven, F.S., Brundin, L., Comabella, M., Franciotta, D., Frederixen, J.L., Fleming, J.O., Furlan, R., Hintzen, R.Q., Hughes, S. G., Johnson, M.H., Krasulova, E., Kuhle, J., Magnone, M.C., Rajda, C., Rejdak, K., Schmidt, H.K., van Pesch, V., Waubant, E., Wolf, C., Giovannoni, G., Hemmer, B., Tumani, H., Deisenhammer, F., 2009. A consensus protocol for the standardization of cerebrospinal fluid collection and biobanking. *Neurology* 73 (22), 1914–1922. <https://doi.org/10.1212/WNL.0b013e3181c47cc2>.
- Thaysen-Andersen, M., Kolarich, D., Packer, N.H., 2021. Glycomics & glycoproteomics: from analytics to function. *Mol. Omics* 17 (1), 8–10. <https://doi.org/10.1039/d0mo90019b>.
- Thiesler, H., Kucukerden, M., Gretenkort, L., Rockle, I., Hildebrandt, H., 2022. News and updates on polysialic acid: from tumor progression and brain development to psychiatric disorders, neurodegeneration, myelin repair and immunomodulation. *Front. Cell Dev. Biol.* 10, 871757. <https://doi.org/10.3389/fcell.2022.871757>.
- Torii, T., Yoshimura, T., Narumi, M., Hitoshi, S., Takaki, Y., Tsuji, S., Ikenaka, K., 2014. Determination of major sialylated N-glycans and identification of branched sialylated N-glycans that dynamically change their content during development in the mouse cerebral cortex. *Glycoconj. J.* 31 (9), 671–683. <https://doi.org/10.1007/s10719-014-9566-2>.
- Tosh, N., Quadrelli, S., Galloway, G., Mountford, C., 2019. Two new fucose-alpha (1-2)-glycans assigned in the healthy human brain taking the number to seven. *Sci. Rep.* 9 (1), 18806. <https://doi.org/10.1038/s41598-019-54933-1>.
- Trinidad, J.C., Schoepfer, R., Burlingame, A.L., Medzhradzky, K.F., 2013. N- and O-glycosylation in the murine synaptosome. *Mol. Cell Proteom.* 12 (12), 3474–3488. <https://doi.org/10.1074/mcp.M113.030007>.
- von der Lieth, C.W., Freire, A.A., Blank, D., Campbell, M.P., Ceroni, A., Damerell, D.R., Dell, A., Dwek, R.A., Ernst, B., Fogh, R., Frank, M., Geyer, H., Geyer, R., Harrison, M. J., Henrick, K., Herget, S., Hull, W.E., Ionides, J., Joshi, H.J., Kamerling, J.P., Leeftang, B.R., Lutteke, T., Lundborg, M., Maass, K., Merry, A., Ranzinger, R., Rosen, J., Royle, L., Rudd, P.M., Schloissnig, S., Stenutz, R., Vrancken, W.F., Widmalm, G., Haslam, S.M., 2011. EUROCarbDB: an open-access platform for glycoinformatics. *Glycobiology* 21 (4), 493–502. <https://doi.org/10.1093/glycob/cwq188>.
- Wang, S., Chen, C., Gadi, M.R., Saikam, V., Liu, D., Zhu, H., Bollag, R., Liu, K., Chen, X., Wang, F., Wang, P.G., Ling, P., Guan, W., Li, L., 2021. Chemoenzymatic modular assembly of O-GalNAc glycans for functional glycomics. *Nat. Commun.* 12 (1), 3573. <https://doi.org/10.1038/s41467-021-23428-x>.
- Watanabe, Y., Aoki-Kinoshita, K.F., Ishihama, Y., Okuda, S., 2021. GlycoPOST realizes FAIR principles for glycomics mass spectrometry data. *Nucleic Acids Res.* 49 (D1), D1523–D1528. <https://doi.org/10.1093/nar/gkab1012>.
- Wilkinson, H., Thomsson, K.A., Rebelo, A.L., Hilliard, M., Pandit, A., Rudd, P.M., Karlsson, N.G., Saldova, R., 2021. The O-Glycome of human nigrostriatal tissue and its alteration in Parkinson's disease. *J. Proteome Res.* 20 (8), 3913–3924. <https://doi.org/10.1021/acs.jproteome.1c00219>.
- Wilkinson, M.D., Dumontier, M., Aalbersberg, I.J., Appleton, G., Axton, M., Baak, A., Blomberg, N., Boiten, J.W., da Silva Santos, L.B., Bourne, P.E., Bouwman, J., Brookes, A.J., Clark, T., Crosas, M., Dillo, I., Dumon, O., Edmunds, S., Evelo, C.T., Finkers, R., Gonzalez-Beltran, A., Gray, A.J., Groth, P., Goble, C., Grethe, J.S., Heringa, J., Hoen, T., Hooft, P.A., Kuhn, R., Kok, T., Kok, R., Lusher, J., Martone, S.J., Mons, M.E., Packer, A., Persson, A.L., Rocca-Serra, B., Roos, P., van Schaik, M., Sansone, R., Evelo, S.A., Sengstag, E., Slater, T., Strawn, T., Swertz, G., Thompson, M.A., van der Lei, M., van Mulligen, J., Velterop, E., Waagmeester, J., Wittenburg, A., Wolstencroft, P., Zhao, K., J.Mons, B., 2016. The FAIR Guiding Principles for scientific data management and stewardship. *Sci Data.* <https://doi.org/10.1038/sdata.2016.18>.
- Williams, S.E., Mealer, R.G., Scolnick, E.M., Smoller, J.W., Cummings, R.D., 2020. Aberrant glycosylation in schizophrenia: a review of 25 years of post-mortem brain studies. *Mol. Psychiatry* 25 (12), 3198–3207. <https://doi.org/10.1038/s41380-020-0761-1>.
- Williams, S.E., Noel, M., Lehoux, S., Cetinbas, M., Xavier, R.J., Sadreyev, R.I., Scolnick, E.M., Smoller, J.W., Cummings, R.D., Mealer, R.G., 2022. Mammalian brain glycoproteins exhibit diminished glycan complexity compared to other tissues. *Nat. Commun.* 13 (1), 275. <https://doi.org/10.1038/s41467-021-27781-9>.

- Wong, A.H., Fukami, Y., Sudo, M., Kokubun, N., Hamada, S., Yuki, N., 2016. Sialylated IgG-Fc: a novel biomarker of chronic inflammatory demyelinating polyneuropathy. *J. Neurol. Neurosurg. Psychiatry* 87 (3), 275–279. <https://doi.org/10.1136/jnnp-2014-309964>.
- Wong, M., Xu, G., Barboza, M., Maezawa, I., Jin, L.W., Zivkovic, A., Lebrilla, C.B., 2020. Metabolic flux analysis of the neural cell glycocalyx reveals differential utilization of monosaccharides. *Glycobiology* 30 (11), 859–871. <https://doi.org/10.1093/glycob/cwaa038>.
- Wuhrer, M., Geyer, H., von der Ohe, M., Gerardy-Schahn, R., Schachner, M., Geyer, R., 2003. Localization of defined carbohydrate epitopes in bovine polysialylated NCAM. *Biochimie* 85 (1–2), 207–218. [https://doi.org/10.1016/s0300-9084\(03\)00043-9](https://doi.org/10.1016/s0300-9084(03)00043-9).
- Wuhrer, M., Selman, M.H., McDonnell, L.A., Kumpfel, T., Derfuss, T., Khademi, M., Olsson, T., Hohlfeld, R., Meinel, E., Krumbholz, M., 2015. Pro-inflammatory pattern of IgG1 Fc glycosylation in multiple sclerosis cerebrospinal fluid. *J. Neuroinflamm.* 12, 235. <https://doi.org/10.1186/s12974-015-0450-1>.
- Xiao, K., Wang, Y., Shen, Y., Han, Y., Tian, Z., 2018. Large-scale identification and visualization of N-glycans with primary structures using GlySeeker. *Rapid Commun. Mass Spectrom.* 32 (2), 142–148. <https://doi.org/10.1002/rcm.8023>.
- Yang, C.P., Li, X., Wu, Y., Shen, Q., Zeng, Y., Xiong, Q., Wei, M., Chen, C., Liu, J., Huo, Y., Li, K., Xue, G., Yao, Y.G., Zhang, C., Li, M., Chen, Y., Luo, X.J., 2018. Comprehensive integrative analyses identify GLT8D1 and CSNK2B as schizophrenia risk genes. *Nat. Commun.* 9 (1), 838. <https://doi.org/10.1038/s41467-018-03247-3>.
- York, W.S., Agravat, S., Aoki-Kinoshita, K.F., McBride, R., Campbell, M.P., Costello, C.E., Dell, A., Feizi, T., Haslam, S.M., Karlsson, N., Khoo, K.H., Kolarich, D., Liu, Y., Novotny, M., Packer, N.H., Paulson, J.C., Rapp, E., Ranzinger, R., Rudd, P.M., Smith, D.F., Struwe, W.B., Tiemeyer, M., Wells, L., Zaia, J., Kettner, C., 2014. MIRAGE: the minimum information required for a glycomics experiment. *Glycobiology* 24 (5), 402–406. <https://doi.org/10.1093/glycob/cwu018>.
- Yoshihara, A., Fukatsu, M., Hoshi, K., Ito, H., Nolle, K., Yamaguchi, Y., Ishii, R., Tokuda, T., Miyajima, M., Arai, H., Kato, T., Furukawa, K., Arai, H., Kikuchi, A., Takeda, A., Ugawa, Y., Hashimoto, Y., 2016. Subgroup differences in 'brain-type' transferrin and alpha-synuclein in Parkinson's disease and multiple system atrophy. *J. Biochem* 160 (2), 87–91. <https://doi.org/10.1093/jb/mvw015>.
- Yuzaki, M., 2018. Two classes of secreted synaptic organizers in the central nervous system. *Annu. Rev. Physiol.* 80, 243–262. <https://doi.org/10.1146/annurev-physiol-021317-121322>.
- Zamze, S., Harvey, D.J., Chen, Y.J., Guile, G.R., Dwek, R.A., Wing, D.R., 1998. Sialylated N-glycans in adult rat brain tissue—a widespread distribution of disialylated antennae in complex and hybrid structures. *Eur. J. Biochem.* 258 (1), 243–270. <https://doi.org/10.1046/j.1432-1327.1998.2580243.x>.
- Zeng, W.F., Cao, W.Q., Liu, M.Q., He, S.M., Yang, P.Y., 2021. Precise, fast and comprehensive analysis of intact glycopeptides and modified glycans with pGlyco3. *Nat. Methods* 18 (12), 1515–1523. <https://doi.org/10.1038/s41592-021-01306-0>.
- Zhao, S., Walsh, I., Abrahams, J.L., Royle, L., Nguyen-Khuong, T., Spencer, D., Fernandes, D.L., Packer, N.H., Rudd, P.M., Campbell, M.P., 2018. GlycoStore: a database of retention properties for glycan analysis. *Bioinformatics* 34 (18), 3231–3232. <https://doi.org/10.1093/bioinformatics/bty319>.
- Zhou, R.Z., Vetrano, D.L., Grande, G., Duell, F., Jonsson, L., Laukka, E.J., Fredolini, C., Winblad, B., Tjernberg, L., Schedin-Weiss, S., 2023. A glycan epitope correlates with tau in serum and predicts progression to Alzheimer's disease in combination with APOE4 allele status. *Alzheimers Dement.* <https://doi.org/10.1002/alz.13024>.
- Zhou, S., Liu, D., Chen, J., Xiang, C., Xiang, J., Yang, M., 2022. Electrochemical quantitation of the glycosylation level of serum neurofilament light chain for the diagnosis of neurodegeneration: an interface-solution dual-path amplification strategy. *Anal. Chem.* 94 (32), 11433–11440. <https://doi.org/10.1021/acs.analchem.2c02753>.
- Zhu, Y., Shan, X., Yuzwa, S.A., Vocadlo, D.J., 2014. The emerging link between O-GlcNAc and Alzheimer disease. *J. Biol. Chem.* 289 (50), 34472–34481. <https://doi.org/10.1074/jbc.R114.601351>.