

SDR 88/2012

13 June 2012

Pupils with Statements of Special Educational Needs: January 2012

This Statistical First Release presents data on pupils with statements of special educational needs (SEN) in January 2012. The information, which is taken from the STATS2 survey of local authorities (LAs), is analysed by age group, by type of school and by LA. A more detailed report on pupils with statements of SEN, including data from the Pupil Level Annual School Census (PLASC), will be published later in the year in 'Schools Census Results, 2012'.

Please note that comparisons between LAs should be treated with caution. The decision whether or not to issue a statement is a matter for individual LAs, taking into account a child's individual needs.

Key points

Pupils with statements

- The number of pupils with a statement of SEN decreased by 3.0 per cent during 2011, bringing the total number with a statement to 13,591 at January 2012 (*Chart 1, Table 1*). Of these pupils, 67 per cent were educated at mainstream schools (*Chart 2, Table 2*).
- At January 2012, an estimated 2.9 per cent of pupils on roll had statements of SEN. This percentage has decreased from 3.3 per cent in January 2006 (*Table 1*).
- 1,333 pupils were newly assessed as requiring a statement during 2011, compared with 1,264 in the previous year. (*Chart 4, Table 4*).
- Since 2002/03 there has been a steady decrease in the number of pupils with a statement, 13,591 in 2011/12 compared with 17,251 in 2002/03 (*Chart 1*). This trend is also reflected in the number of pupils with a statement in the School Census.

Inclusion

- 92 per cent (12,477 pupils) of the total with statements were educated within their "home" LA rather than in other authorities (*Table 1*).
- 29 per cent of pupils with statements were educated at maintained special schools. A further 45 per cent were educated in mainstream classes at mainstream schools, with an additional 22 per cent in special classes at mainstream schools (*Table 3*).
- The percentage of pupils with statements educated at mainstream schools varied considerably across LAs, from 90 per cent in Ceredigion (which does not have a special school) to 22 per cent in Merthyr Tydfil (*Table 10*).

Statistician: Gwion Dafydd
Next update: June 2013 (provisional)

Tel: 029 2082 5968

Twitter: www.twitter.com/statisticswales | www.twitter.com/ystadegaucymru

E-mail: school.stats@wales.gsi.gov.uk

Cyhoeddwyd gan Y Gwasanaethau Gwybodaeth a Dadansoddi
Llywodraeth Cymru, Parc Cathays, Caerdydd, CF10 3NQ
Ffôn – Swyddfa'r Wasg **029 2089 8099**, Ymholiadau Cyhoeddus **029 2082 3332**
www.cymru.gov.uk/ystadegau

Issued by Knowledge and Analytical Services
Welsh Government, Cathays Park, Cardiff, CF10 3NQ
Telephone – Press Office **029 2089 8099**, Public Enquiries **029 2082 5050**
www.wales.gov.uk/statistics



Llywodraeth Cymru
Welsh Government

Contents

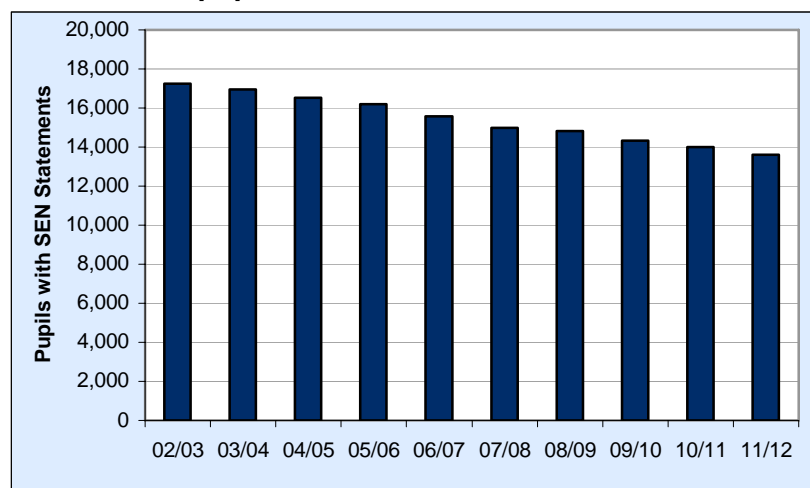
	Page	
Section 1	Pupils with statements, by place of education and age group	3
Table 1	Pupils with statements, by place of education	3
Table 2	Pupils with statements, by place of education and age group	4
Table 3	Percentage distribution of pupils with statements, by place of education and age group	5
Section 2	Pupils transferring schools and newly assessed as requiring a statement	6
Table 4	Pupils newly assessed as requiring a statement	6
Table 5	Pupils with statements who transferred schools	7
Section 3	Welsh Local Authority data	7
Table 6	Assessments by LA	8
Table 7	Assessments by LA: number completed per week	8
Table 8	Pupils with statements by LA	9
Table 9	Pupils with statements by place of education and LA, at January 2012	9
Table 10	Percentage of pupils with statements by place of education & LA at January 2012	10
Table 11	Pupils with statements, by age group and LA at January 2012	10
Key Quality Information		11

Section 1: Pupils with statements, by place of education and age group

The data is collected each January by LAs in Wales.

Further data for pupils with statements by place of education and age group can be found in Tables 1 to 3.

Chart 1: Total pupils with SEN statements



- Since 2002/03 there has been a year on year decrease in the number of pupils with SEN.
- The percentage of pupils with SEN statements has fallen over the last ten years from around 3.5 per cent to nearer 3 per cent.
- The number of SEN pupils in mainstream classes has fallen over the last 10 years by almost 3,000.

Table 1: Pupils with statements, by place of education (a)

	2005/06	2006/07	2007/08	2008/09	2009/10	2010/11	2011/12
Pupils registered in their own authority and receiving education in that authority in:							
Mainstream schools:							
Mainstream classes	7,765	7,476	7,006	6,528	6,424	6,077	5,703
Special classes/units	3,403	3,056	2,913	3,063	2,804	2,848	2,883
Maintained special schools	3,251	3,350	3,375	3,510	3,448	3,508	3,518
Independent & non-maintained special schools	50	51	54	59	58	73	69
Pupil Referral Units	165	123	133	123	122	150	150
Other than in school	245	235	211	252	223	185	154
Total	14,879	14,291	13,692	13,535	13,079	12,841	12,477
Pupils registered in their own authority but receiving education in another authority in:							
Mainstream schools:							
Mainstream classes	457	446	445	446	409	381	379
Special classes/units	83	85	79	75	90	77	77
Maintained special schools	434	449	459	451	423	379	356
Independent & non-maintained special schools	303	284	302	300	297	311	283
Pupil Referral Units	1	0	2	0	7	4	8
Other than in school	26	24	15	25	22	16	11
Total	1,304	1,288	1,302	1,297	1,248	1,168	1,114
Total pupils with SEN statements	16,183	15,579	14,994	14,832	14,327	14,009	13,591
Total pupils on roll	494,534	489,646	484,572	479,446	476,363	475,260	~
<i>Percentage of pupils with SEN statements (b)</i>	3.3	3.2	3.1	3.1	3.0	2.9	2.9

(a) At January each year.

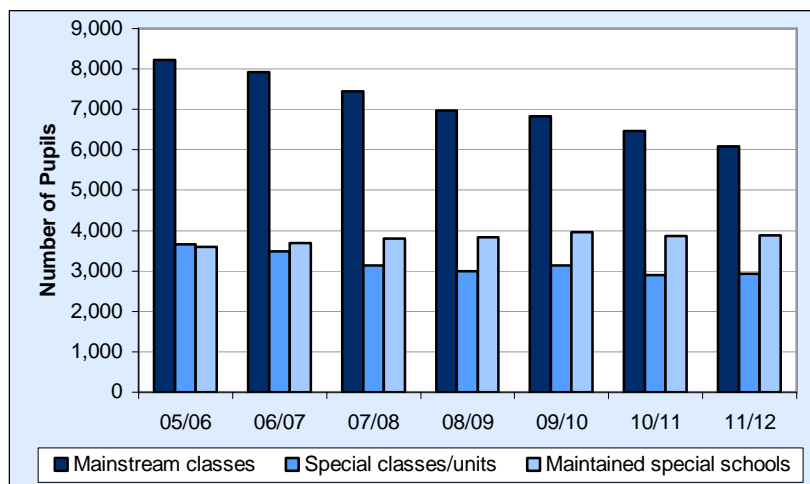
(b) 2011/12 percentage is based on total pupils on roll at January 2011, excluding pupils in Pupil Referral Units (PRUs).

From 2010 information for pupils in PRUs and educated other than at school is collected via the Educated Other Than At School Pupil - Level Annual School Census (EOTAS PLASC).

Percentages prior to 2009/10 include all pupils in all schools.

For 2012 PLASC data is not available at time of publication. The pupils on roll figure from January 2011 has been used to calculate the 2011/12 percentage of pupils with SEN statements.

Chart 2: Percentage of pupils with statements by place of education



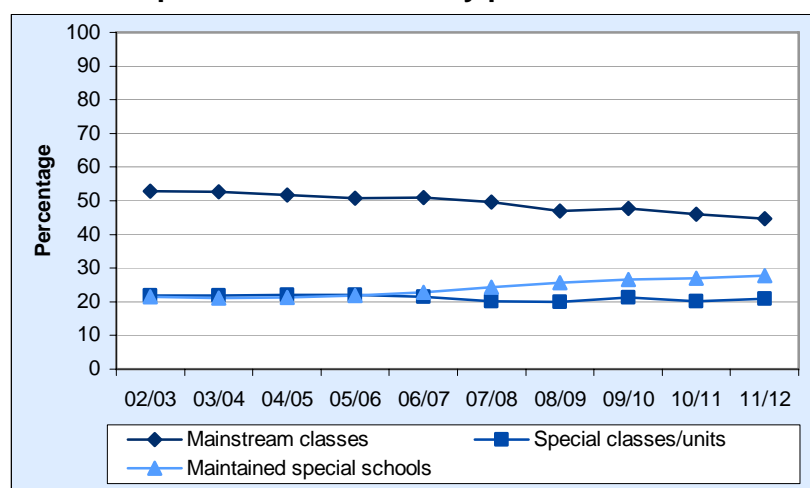
- The last seven years have seen a decrease in the number of pupils with statements in mainstream classes fall from 8,222 to 6,082.
- Pupils with statements attending special classes/units within mainstream schools have decreased from 3,486 to 2,960.
- The number of pupils with statements at maintained special schools has increased over the last seven years from 3,685 to 3,874.

Table 2: Pupils with statements, by place of education and age group (a)

	2005/06	2006/07	2007/08	2008/09	2009/10	2010/11	2011/12
Mainstream schools:							
Mainstream classes							
Under 5	268	268	252	296	307	329	364
5-15	7,665	7,275	6,760	6,387	6,188	5,733	5,309
16 & over	289	379	439	291	338	396	409
Total	8,222	7,922	7,451	6,974	6,833	6,458	6,082
Special classes/units:							
Under 5	165	146	154	198	151	142	159
5-15	3,210	2,906	2,751	2,843	2,659	2,675	2,653
16 & over	111	89	87	97	84	108	148
Total	3,486	3,141	2,992	3,138	2,894	2,925	2,960
Maintained special schools:							
Under 5	133	144	153	150	134	140	143
5-15	2,939	2,987	2,960	3,070	2,930	2,885	2,862
16 & over	613	668	721	741	807	862	869
Total	3,685	3,799	3,834	3,961	3,871	3,887	3,874
Independent & non-maintained special schools							
Under 5	14	7	0	3	5	7	5
5-15	269	240	263	257	247	258	220
16 & over	70	88	93	99	103	119	127
Total	353	335	356	359	355	384	352
Pupil Referral Units:							
Under 5	0	0	0	0	0	0	0
5-15	159	122	130	118	122	150	151
16 & over	7	1	5	5	7	4	7
Total	166	123	135	123	129	154	158
Other than in school:							
Under 5	18	23	10	10	13	15	9
5-15	225	222	188	220	203	145	136
16 & over	28	14	28	47	29	41	20
Total	271	259	226	277	245	201	165
Total numbers:							
Under 5	598	588	569	657	610	633	680
5-15	14,467	13,752	13,052	12,895	12,349	11,846	11,331
16 & over	1,118	1,239	1,373	1,280	1,368	1,530	1,580
Total	16,183	15,579	14,994	14,832	14,327	14,009	13,591

(a) At January each year.

Chart 3: Pupils with statements by place of education



- 45 per cent of pupils with statements were educated in mainstream classes in 2011/12, a fall from 53 per cent in 2002/03.
- 29 per cent of pupils with statements were educated at maintained special schools, a rise from 21 per cent in 2002/03.
- A higher proportion of pupils with statements are aged 16 and over in 2011/12 (12 per cent) compared with 2002/03 (8 per cent).

Table 3: Percentage distribution of pupils with statements, by place of education and age group (a)

	2005/06	2006/07	2007/08	2008/09	2009/10	2010/11	2011/12
Place of education:							
Mainstream schools:							
Mainstream classes	51	51	50	47	48	46	45
Special classes/units	22	20	20	21	20	21	22
Maintained special schools	23	24	26	27	27	28	29
Independent & non-maintained special schools	2	2	2	2	2	3	3
Pupil Referral Units	1	1	1	1	1	1	1
Other than in school	2	2	2	2	2	1	1
Total	100	100	100	100	100	100	100
of which in mainstream schools	72	71	70	68	68	67	67
Age group:							
Under 5	4	4	4	4	4	5	5
5-15	89	88	87	87	86	85	83
16 & over	7	8	9	9	10	11	12
Total	100	100	100	100	100	100	100

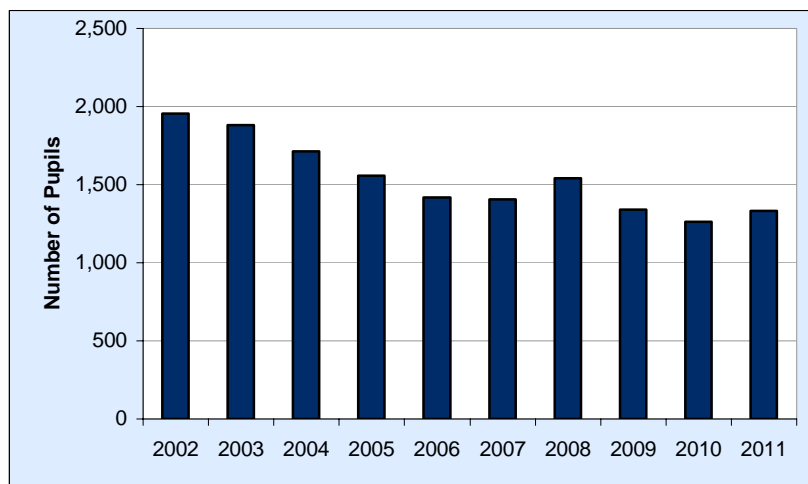
(a) At January each year. Percentages shown are the number of pupils with statements attending each place of education as a percentage of the total number of children with statements.

Section 2: Pupils Transferred and Newly Assessed

The data is collected each January by LAs in Wales.

Further data for on pupils with statements who transferred schools and pupils newly assessed as requiring a statement can be found in Tables 4 to 5.

Chart 4: Total pupils newly assessed as requiring a statement



- Since 2002 there has been a decrease in the number of pupils newly assessed as requiring a statement, from 1,953 to 1,333 in 2011.
- The fall in the number of pupils newly assessed is most evident in the 5 to 15 age band, where in 2002 there were 1,472 and in 2011 there were 895.

Table 4: Pupils newly assessed as requiring a statement by place of education and age group (a)

	2005	2006	2007	2008	2009	2010	2011
Pupils newly assessed in:							
Mainstream schools:							
Mainstream classes	930	826	755	876	800	742	710
Special classes/units	294	272	323	331	249	237	301
Maintained special schools	242	245	239	263	206	216	254
Independent & non-maintained special schools	22	16	16	24	16	22	18
Other than in school	31	38	17	19	19	12	22
Awaiting provision specified in statements	21	10	39	20	28	15	6
Pupil Referral Units	17	10	15	9	22	20	22
Pupils newly assessed aged:							
Under 5	361	384	347	426	383	374	426
5-15	1,191	1,028	1,042	1,071	951	881	895
16 & over	5	5	15	45	6	9	12
Total newly assessed pupils	1,557	1,417	1,404	1,542	1,340	1,264	1,333

(a) Pupils for whom statements of Special Educational Needs were made for the first time during the calendar year.

Table 5: Pupils with statements who transferred schools (a)

	2005	2006	2007	2008	2009	2010	2011
Pupils with statements who transferred:							
from mainstream schools to special, independent or grant maintained schools	169	217	222	189	194	246	188
from special or independent or grant maintained schools to mainstream classes in mainstream schools	13	23	13	23	18	9	15
from special or independent or grant maintained schools to designated special units/classes in mainstream school	19	13	14	18	10	13	25
Total	201	253	249	230	222	268	228

(a) Pupils with statements who transferred during the calendar year (transfers are made in the years following a statement being issued).

- The total number of pupils with statements who have transferred schools over the past ten years has fluctuated from a high of 279 in 2004 to 190 in 2002, in 2011 the figure stood at 228.
- The vast majority of pupils who transferred moved from mainstream schools to special schools.

Section 3: Welsh Local Authority data

Caution should be used when comparing LA data as the policy of issuing statements differs between authorities. In addition an LA may have changed its rules with regard to statements from the previous year.

Further data at LA level can be found in Tables 6 to 11.

Key Points

Percentage distribution of pupils with statements, by place of education and LA, at January 2012 (Table 10)

- 90 per cent of pupils with statements in Ceredigion (which does not have a special school) were educated at mainstream schools.
- Almost 75 per cent of pupils with statements in Merthyr Tydfil were educated at maintained special schools.

Pupils with statements, by age group and LA, at January 2012 (Table 11)

- Swansea had the highest rate of pupils with statements per 1,000 pupils, with 43.
- The lowest rate of pupils with statements was in Bridgend with 15 pupils per 1,000.

Table 6: Number of assessments, by LA

LA	Assessments resulting in new statements		Assessments completed, statements not issued		Assessments on-going at 31 Dec.		Total assessments completed or on-going	
	2010	2011	2010	2011	2010	2011	2010	2011
Isle of Anglesey	45	27	9	2	18	3	72	32
Gwynedd	75	44	16	6	7	12	98	62
Conwy	21	27	2	2	12	8	35	37
Denbighshire	39	36	2	1	10	9	51	46
Flintshire	62	59	0	0	8	7	70	66
Wrexham	28	39	0	0	11	7	39	46
Powys	17	48	1	6	10	15	28	69
Ceredigion	17	8	1	1	4	3	22	12
Pembrokeshire	23	21	1	2	10	22	34	45
Carmarthenshire	116	132	5	5	72	65	193	202
Swansea	144	166	6	6	22	17	172	189
Neath Port Talbot	81	94	13	14	41	22	135	130
Bridgend	36	23	1	1	37	23	74	47
The Vale of Glamorgan	41	17	2	4	11	16	54	37
Rhondda Cynon Taf	58	93	10	11	59	63	127	167
Merthyr Tydfil	13	15	5	6	16	11	34	32
Caerphilly	62	71	19	18	17	26	98	115
Blaenau Gwent	58	65	10	46	18	6	86	117
Torfaen	15	13	24	24	11	10	50	47
Monmouthshire	60	42	4	5	11	11	75	58
Newport	66	96	4	5	26	45	96	146
Cardiff	187	197	3	10	47	35	237	242
Wales	1,264	1,333	138	175	478	436	1,880	1,944

Table 7: Average number of assessments completed per week, by LA (a)

LA	2005	2006	2007	2008	2009	2010	2011
Isle of Anglesey	1.3	0.5	0.8	0.8	0.9	1.0	0.6
Gwynedd	1.6	0.5	0.5	0.9	1.1	1.8	1.0
Conwy	1.5	0.7	1.0	0.6	1.0	0.4	0.6
Denbighshire	0.7	0.6	0.8	0.8	0.6	0.8	0.7
Flintshire	1.4	1.4	1.3	1.4	1.2	1.2	1.1
Wrexham	1.6	1.8	2.1	1.8	0.5	0.5	0.8
Powys	2.4	2.1	1.0	0.4	0.3	0.3	1.0
Ceredigion	1.4	1.4	0.6	0.2	0.4	0.3	0.2
Pembrokeshire	0.4	0.4	0.5	0.6	0.6	0.5	0.4
Carmarthenshire	2.3	2.8	2.0	3.4	2.5	2.3	2.6
Swansea	2.8	2.7	3.3	3.8	3.7	2.9	3.3
Neath Port Talbot	1.1	1.1	1.5	2.2	2.1	1.8	2.1
Bridgend	1.1	1.4	0.8	1.1	0.8	0.7	0.5
The Vale of Glamorgan	0.9	1.2	0.9	0.9	1.0	0.8	0.4
Rhondda Cynon Taf	1.9	1.4	1.4	1.8	1.5	1.3	2.0
Merthyr Tydfil	0.6	0.6	0.4	0.4	0.2	0.3	0.4
Caerphilly	2.8	2.9	3.9	2.9	1.8	1.6	1.7
Blaenau Gwent	0.4	0.1	0.3	1.2	1.0	1.3	2.1
Torfaen	0.6	0.3	0.3	0.8	1.0	0.8	0.7
Monmouthshire	1.4	1.4	1.6	1.3	1.3	1.2	0.9
Newport	1.9	2.1	1.5	1.8	1.6	1.3	1.9
Cardiff	4.5	3.4	3.6	4.1	4.2	3.7	4.0
Wales	34.4	30.7	29.9	32.8	29.2	27.0	29.0

(a) Number of new statements plus the number of assessments completed but where a statement was not issued, divided by 52.

Table 8: Pupils with statements, by LA (a)

LA	2005/06	2006/07	2007/08	2008/09	2009/10	2010/11	2011/12
Isle of Anglesey	467	427	391	375	380	381	342
Gwynedd	738	647	578	545	525	542	534
Conwy	735	642	557	509	459	417	374
Denbighshire	586	551	516	503	443	417	395
Flintshire	942	899	843	795	759	748	680
Wrexham	856	834	840	834	758	706	650
Powys	930	921	851	752	680	601	549
Ceredigion	462	472	419	342	302	277	230
Pembrokeshire	516	464	429	413	403	359	336
Carmarthenshire	1,208	1,133	1,135	1,140	1,047	1,046	1,061
Swansea	1,235	1,251	1,306	1,363	1,419	1,458	1,511
Neath Port Talbot	744	712	693	716	724	729	732
Bridgend	345	350	347	357	330	360	332
The Vale of Glamorgan	437	467	468	484	478	468	432
Rhondda Cynon Taf	643	627	615	627	611	595	620
Merthyr Tydfil	200	204	205	201	185	192	189
Caerphilly	989	956	984	974	948	876	816
Blaenau Gwent	426	384	354	355	385	390	377
Torfaen	427	389	349	327	293	282	268
Monmouthshire	456	478	492	493	510	523	484
Newport	1,069	1,021	959	942	927	878	881
Cardiff	1,772	1,750	1,663	1,785	1,761	1,764	1,798
Wales	16,183	15,579	14,994	14,832	14,327	14,009	13,591

(a) At January each year.

Table 9: Pupils with statements, by place of education and LA, at January 2012

LA	Pupils with statements in:							Total pupils with statements
	Mainstream schools in:		Total in mainstream schools	Maintained special schools	Independent & non-maintained special schools	Pupil Referral Unit	Other than in school	
	Mainstream classes	Special classes /units						
Isle of Anglesey	247	10	257	70	10	0	5	342
Gwynedd	365	20	385	125	14	2	8	534
Conwy	131	50	181	170	13	7	3	374
Denbighshire	189	19	208	178	6	2	1	395
Flintshire	157	227	384	257	25	12	2	680
Wrexham	119	260	379	254	10	0	7	650
Powys	222	54	276	255	6	7	5	549
Ceredigion	163	43	206	2	8	6	8	230
Pembrokeshire	156	37	193	117	10	11	5	336
Carmarthenshire	769	164	933	97	11	3	17	1,061
Swansea	816	429	1,245	176	29	38	23	1,511
Neath Port Talbot	178	338	516	199	9	2	6	732
Bridgend	69	38	107	216	9	0	0	332
The Vale of Glamorgan	132	108	240	167	16	7	2	432
Rhondda Cynon Taf	117	35	152	430	22	8	8	620
Merthyr Tydfil	25	17	42	139	2	0	6	189
Caerphilly	411	230	641	133	15	5	22	816
Blaenau Gwent	161	110	271	79	10	17	0	377
Torfaen	131	60	191	56	10	11	0	268
Monmouthshire	293	104	397	53	30	3	1	484
Newport	444	274	718	126	24	11	2	881
Cardiff	787	333	1,120	575	63	6	34	1,798
Wales	6,082	2,960	9,042	3,874	352	158	165	13,591

Table 10: Percentage distribution of pupils with statements, by place of education and LA, at January 2012

LA	Pupils with statements in:							Total pupils with statements
	Mainstream schools in:		Total in mainstream schools	Maintained special schools	Independent & non-maintained special schools	Pupil Referral Unit	Other than in school	
	Mainstream classes	Special classes /units						
Isle of Anglesey	72	3	75	20	3	0	1	100
Gwynedd	68	4	72	23	3	-	1	100
Conwy	35	13	48	45	3	2	1	100
Denbighshire	48	5	53	45	2	1	-	100
Flintshire	23	33	56	38	4	2	-	100
Wrexham	18	40	58	39	2	0	1	100
Powys	40	10	50	46	1	1	1	100
Ceredigion	71	19	90	1	3	3	3	100
Pembrokeshire	46	11	57	35	3	3	1	100
Carmarthenshire	72	15	88	9	1	-	2	100
Swansea	54	28	82	12	2	3	2	100
Neath Port Talbot	24	46	70	27	1	-	1	100
Bridgend	21	11	32	65	3	0	0	100
The Vale of Glamorgan	31	25	56	39	4	2	-	100
Rhondda Cynon Taf	19	6	25	69	4	1	1	100
Merthyr Tydfil	13	9	22	74	1	0	3	100
Caerphilly	50	28	79	16	2	1	3	100
Blaenau Gwent	43	29	72	21	3	5	0	100
Torfaen	49	22	71	21	4	4	0	100
Monmouthshire	61	21	82	11	6	1	-	100
Newport	50	31	81	14	3	1	-	100
Cardiff	44	19	62	32	4	-	2	100
Wales	45	22	67	29	3	1	1	100

Table 11: Pupils with statements, by age group and LA, at January 2012

LA	Rate per 1,000 pupils (a)	Pupils with statements aged:				Total
		Under 5 years	5 -10 years	11-15 years	16 and over	
Isle of Anglesey	36	16	131	163	32	342
Gwynedd	30	23	198	272	41	534
Conwy	22	5	107	216	46	374
Denbighshire	24	10	127	204	54	395
Flintshire	29	24	223	362	71	680
Wrexham	34	16	177	371	86	650
Powys	28	9	132	339	69	549
Ceredigion	23	12	71	123	24	230
Pembrokeshire	18	14	83	183	56	336
Carmarthenshire	38	32	258	515	256	1,061
Swansea	43	173	567	685	86	1,511
Neath Port Talbot	35	60	283	368	21	732
Bridgend	15	2	80	168	82	332
The Vale of Glamorgan	20	13	147	221	51	432
Rhondda Cynon Taf	16	22	139	324	135	620
Merthyr Tydfil	20	10	44	104	31	189
Caerphilly	28	14	264	440	98	816
Blaenau Gwent	37	26	149	177	25	377
Torfaen	17	2	71	161	34	268
Monmouthshire	36	14	172	262	36	484
Newport	36	44	291	472	74	881
Cardiff	34	139	648	839	172	1,798
Wales	29	680	4,362	6,969	1,580	13,591

(a) Pupils with statements at January 2012 per 1,000 total pupils at January 2011 minus pupils in Pupil Referral Units. PLASC pupils numbers for January 2012 will be available in July 2012.

From 2010 information for pupils in PRUs and educated other than at school is collected via the Educated Other Than At School Pupil - Level Annual School Census (EOTAS PLASC), which is not published. Percentages prior to 2009/10 include all pupils in all schools.

Key Quality Information

Caution should be used when comparing LA data as the policy of issuing statements differs between authorities. In addition, an LA may have changed its rules with regard to statements from the previous year.

Source of data

Annual STATS2 data collection from LAs

The STATS2 return is completed each January by LAs. The form relates to those children for whom the LA is responsible. It records the number of children for whom the LA has a statement of SEN as well as the provision made for them, whether within the LA's area or elsewhere. The number of pupils assessed during the previous calendar year and the number of statements issued is also recorded.

Definition of Special Educational Needs

Children have special educational needs if they have a learning difficulty which calls for special educational provision to be made for them.

Children have a learning difficulty if they:

- (a) have a significantly greater difficulty in learning than the majority of children of the same age.
- (b) have a disability which prevents or hinders them from making use of educational facilities of a kind generally provided for children of the same age at schools within the area of the local authority.
- (c) are under compulsory school age and fall within the definition at (a) or (b) above or would so do if special educational provision was not made for them.

Special educational provision means:

- (a) for children of two or over, educational provision which is additional to, or otherwise different from, the educational provision made generally for children of their age at schools maintained by the LA, other than special schools, in the area.
- (b) for children under two, educational provision of any kind.

For further information please see the [Special Educational Needs Code of Practice for Wales](#).

Symbols: The following symbols have been used throughout the publication:

- percentages less than 0.5 but not zero
- . not applicable
- ~ not yet available

Rounding: In tables where figures have been rounded to the nearest final digit there may be an apparent discrepancy between the sum of the constituent items and the total as shown.

Other countries' releases

Attached is the latest available release for England, published on 30 June 2011:

[Special Educational Needs in England: January 2011](#)

Scotland does not use the same term as England and Wales (SEN), but has information on "Additional Support Needs" (ASN), and data is therefore not directly comparable. Their latest release was published on 7 December 2011:

[Summary Statistics for Schools in Scotland, No.2 2011 Edition](#)

Related data for Wales

The Welsh Government also releases data **from a different source** (the Pupil Level Annual School Census - PLASC) in the form of Statistical First Releases, for example:

[Academic Achievement by Pupil Characteristics, 2011](#), published on 28 March 2012

[Schools Census, 2011: Final Results - Revised](#), published on 13 December 2011 (2012 data will be published on 11 July 2012)

Since the above releases are from a different source, figures may not match, and therefore caution should be taken when making comparisons.

Who are the key users of this data?

These statistics are used within and outside the Welsh Government. Some of the key users are:

- Ministers and the Members Research Service in the National Assembly for Wales;
- The Department for Education in England;
- Other government departments;
- Local authorities;
- Schools;
- Estyn, Her Majesty's Inspectorate of Education and Training in Wales;
- Wales Audit Office;
- The Department for Education and Skills in the Welsh Government;
- Other areas of the Welsh Government;
- The research community;
- Students, academics and universities;
- Individual citizens and private companies.

Comments on the coverage or presentation of this release are welcome. Contact details can be found on the front page.

We are currently reviewing the STATS2 data collection to establish what uses are made of this data and whether there is sufficient demand for this data in the future. Data on pupils with statements is also available from the School Census.

We would welcome any feedback on these statistics.