

Fall 9-2021

Beauty and the Beast Lighting Design

Kathe DeVault

Ohio Northern University, k-devault@onu.edu

Follow this and additional works at: https://digitalcommons.onu.edu/tata_faculty



Part of the [Other Theatre and Performance Studies Commons](#)

Recommended Citation

DeVault, Kathe, "Beauty and the Beast Lighting Design" (2021). *Theatre Arts Faculty Scholarship*. 1.
https://digitalcommons.onu.edu/tata_faculty/1

This Poster is brought to you for free and open access by the Theatre Arts at DigitalCommons@ONU. It has been accepted for inclusion in Theatre Arts Faculty Scholarship by an authorized administrator of DigitalCommons@ONU. For more information, please contact digitalcommons@onu.edu.

Disney's *Beauty and the Beast*

Design Statement

For Ohio Northern's production of *Beauty and the Beast*, the director Matt Simpkins wanted to make a new aesthetic for the show: ominous, mysterious and dramatic yet still enchanting. This was not to be your typical *Beauty and the Beast*. Because of the director's film background, the scenery was to act as film set where projections set the environment for each section. Lighting was to highlight the dark mood of the piece while also acting as the "close up" for the intimate nature many of the scenes have. Backlight was very important for separating the actors from the projections/scenery but also because of the desire to see the shafts of light coming thru the space. Between fog, dry ice and/or haze, one was always running during the show. Seeing actors in silhouette with the contrasts of light and dark was integral to the mood of the piece. Even during "Be Our Guest" the quintessential musical theatre extravaganza, Belle and Lumiere were the only two characters completely visible, the others were lit with sidelight, backlight or footlights.

Lighting Designer: Kathleen DeVault
Director: Matt Simpkins
Scenic Designer: Kristin Ellert
Costume Designer: Ameera Ansari
Sound Designer: Chris Pyfrom

"Be Our Guest" when Belle meets all the "objects" of the castle.



Maurice sitting in the Beast's chair



Button of "Belle" after audience has met Belle and Villagers



Gaston will be making Belle his bride.



Disney's Beauty and The Beast

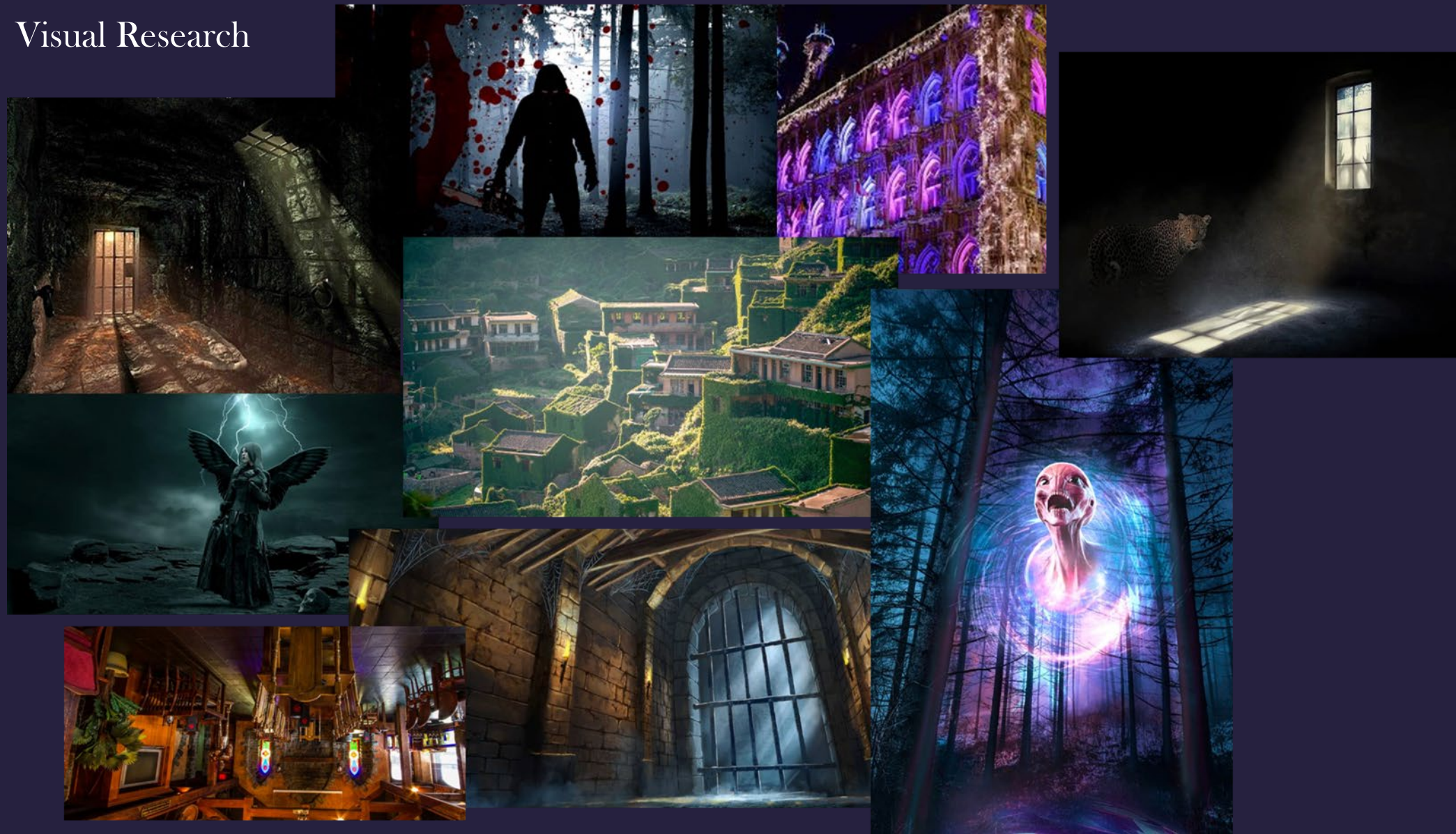
Music: Alan Menken

Lyrics: Howard Ashman & Tim Rice

Book: Linda Woolverton

Beast is going to "take care" of Maurice.

Visual Research



Belle finds Maurice in the dungeon while the Beast listens.

LeFou is singing about "Gaston" in the tavern.



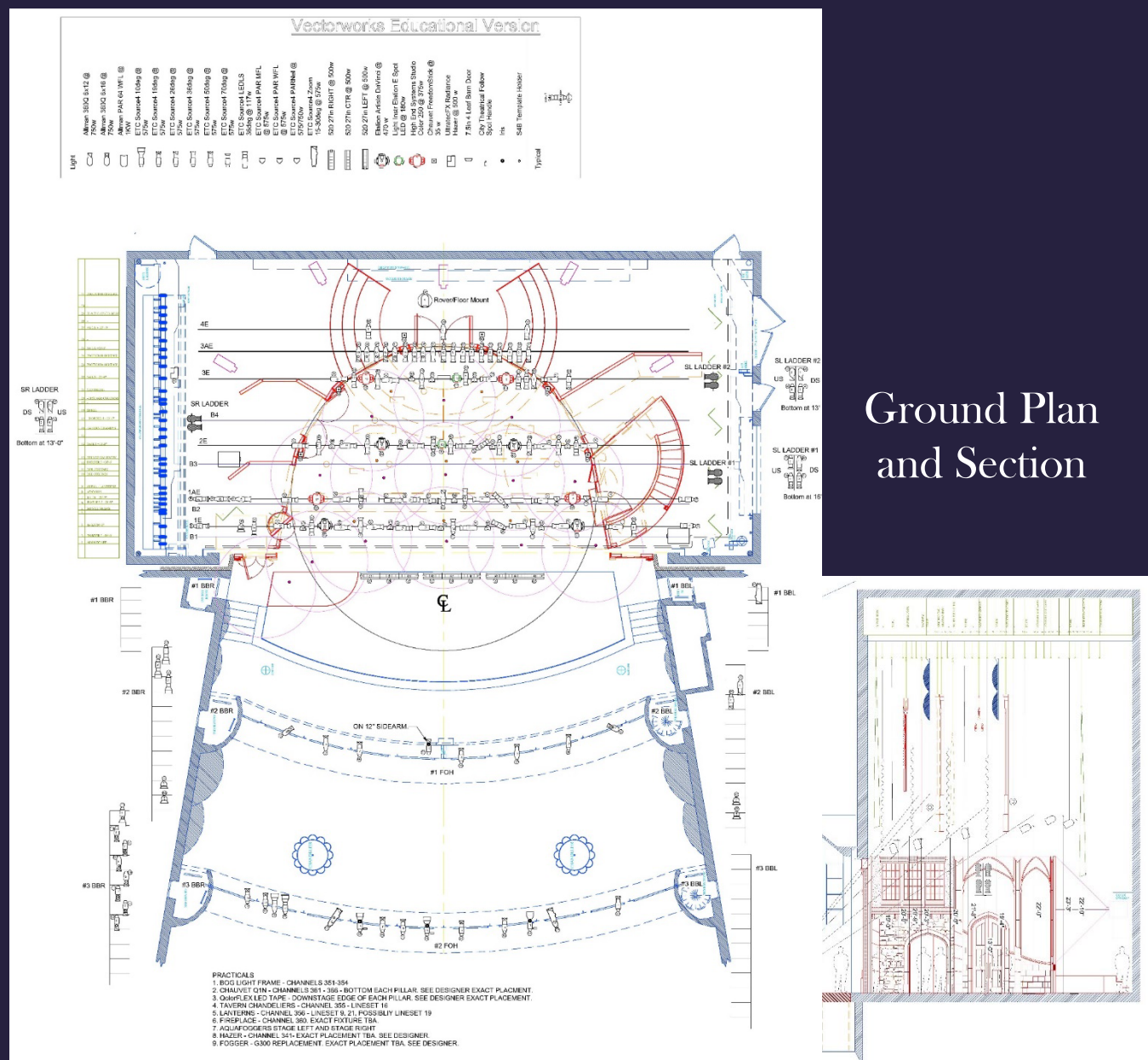
Disney's Beauty and the Beast

Lighting Designer: Kathleen DeVault

The Beast believing he will always be a beast because "If I Can't Love Her"



Beast after Belle has left.



Villagers breaking into the castle.

