



# Genesis and mobilization of fluoride in groundwater of India: Statistical evaluation, health impacts, and potential remedies

Shakir Ali<sup>a,\*</sup>, Shashank Shekhar<sup>a</sup>, Rakesh Kumar<sup>b,c</sup>, K. Brindha<sup>d</sup>, Peiyue Li<sup>e</sup>

<sup>a</sup> Department of Geology, University of Delhi, Delhi 110007, India

<sup>b</sup> School of Ecology and Environment Studies, Nalanda University, Rajgir, Bihar 803116, India

<sup>c</sup> Department of Biosystems Engineering, Auburn University, Auburn, AL 36849, USA

<sup>d</sup> Hydrogeology Group, Institute of Geological Sciences, Freie Universitaet Berlin, Berlin 12249, Germany

<sup>e</sup> School of Water and Environment, Chang'an University, No.126 Yanta Road, Xi'an, Shaanxi 710054, China

## ARTICLE INFO

### Keywords:

Geogenic contaminant

Fluoride

Statistical correlation

Inorganic contaminant

Fluoride in arid and semi-arid regions

India

## ABSTRACT

Groundwater contamination by fluoride ( $F^- > 1.5$  mg/L) is pervasive and typically confined to arid and semi-arid regions. Therefore, several parts of India are contaminated with  $F^-$ . However, genesis, sources, and mobilization of  $F^-$  in groundwater are unclear or so far evaluated based often on studies conducted at a local scale. To understand the severity of  $F^-$  contamination at the national scale and to devise remedial strategies, we performed a statistical evaluation between  $F^-$  and its influencing factors, including geology, hydro-meteorology, and potential hydro-chemical parameters based on a large dataset ( $n = \sim 2000$ ) published in the last two decades throughout India. Results revealed that (a) alkalinity plays a pivotal role in the mobilization of  $F^-$  into groundwater from the sediments/rocks, (b) high  $F^-$  in groundwater is more pronounced in the arid and semi-arid areas of alluvial plains than hard rock regions, and (c) positive correlation of elevated  $F^-$  with  $SiO_2$  and  $K^+$  indicates the dominance of geogenic sources linked to the weathering of fluorine bearing silicates. Investigations show that one-third of the Indian drinking water wells are contaminated with  $F^-$ , thereby risking the health of over millions of people through the drinking water pathway. Findings from this study have addressed the most possible sources, pathways, and regional prevalence of  $F^-$  contamination in the groundwater of India, and suggested the suitable remedial measures based on prevailing surface and sub-surface conditions. Lastly, this review also addresses challenges and propose future research directions to tackle high  $F^-$  groundwater and ensure safe drinking water supply in India.

## Introduction

Fluorine is one of the lightest halogen elements, electronegative, and highly mobile at high temperatures. It is one of the abundant elements in the Earth crust (625 mg/kg), and in aqueous solution; it behaves as  $F^-$  ions (Ali 2017). World Health Organization (WHO 2011) and the Bureau of Indian Standards (2012) have set the upper safe limit to 1.5 mg/L of  $F^-$  in drinking water; however, excess of this is considered to be contaminated. Intake of  $F^-$  via the drinking water pathway beyond the permissible/safe limit can cause dental fluorosis, especially in children, and have dangerous severe, irreversible effects in the long-term and evident in the form of skeletal fluorosis (Ali et al., 2016; Mohammadi et al., 2017; Kumar et al., 2018; Nordstrom and Smedley, 2022). However, an optimum level of  $F^-$  (0.5 mg/L) is needed for tooth enamel and

bone mineralization (Ali et al., 2016). Various studies on  $F^-$  contamination were earlier documented to study its sources and pathways in different parts of the globe (Ozsvath et al. 2006; Guo et al., 2007; Kumar et al., 2015; Vithanage and Bhattacharya 2015; Dehbandi et al., 2018; Ali et al., 2018; Fuge 2019; Kashyap et al., 2020; McMahon et al., 2020).

$F^-$  contamination can be derived from both geogenic and anthropogenic sources, while geogenic sources are widespread (Nordstrom and Smedley, 2022). In India, groundwater from both crystalline rocks, as well as unconsolidated aquifers, are largely reported to be contaminated by  $F^-$  (Saha et al., 2016; 2020). Nearly 300 minerals were reported to contain  $F^-$ ; however, the most commonly occurring minerals are fluorite ( $CaF_2$ ), fluorapatite [ $Ca_5(PO_4)_3F$ ], biotite [ $K(Mg, Fe)_3(AlSi_3O_{10})(OH, F)_2$ ], phlogopite [ $KMg_3(AlSi_3O_{10})(F, OH)_2$ ], apatite [ $Ca_5(PO_4)_3(F, Cl, OH)$ ], cryolite ( $Na_3AlF_6$ ), and topaz [ $Al_2SiO_4(F, OH)_2$ ] (Nordstrom and

\* Corresponding author.

E-mail address: [shakiriitb@gmail.com](mailto:shakiriitb@gmail.com) (S. Ali).

<https://doi.org/10.1016/j.hazadv.2023.100352>

Received 20 June 2023; Received in revised form 28 July 2023; Accepted 3 August 2023

Available online 6 August 2023

2772-4166/© 2023 The Author(s). Published by Elsevier B.V. This is an open access article under the CC BY license (<http://creativecommons.org/licenses/by/4.0/>).

Smedley, 2022; Kumar et al., 2023a). The pH of groundwater is one of the critical factors responsible for the release of  $F^-$  from the sediments/rocks. Fertilization in agriculture and its abundant use in industrial sectors such as aluminum smelting, fertilizers manufacturing, and coal power stations are likely anthropogenic sources (Ali et al., 2016; Rao et al., 2017; Kumar et al., 2019; Kumar et al., 2023a). Apart from drinking water,  $F^-$  can also be consumed through food, beverages, and teas, particularly  $F^-$  bearing brick tea used in China (Ali et al., 2016). Even though, the content of  $F^-$  in beverages is comparatively lower than in drinking water, the daily consumption of  $F^-$  through these beverages can significantly contribute to fluorosis (De et al., 2021).

Elevated level of  $F^-$  in the groundwater is now a global problem and are frequently reported. Typically, these regions are confined to the arid and semi-arid areas which mainly fall in the developing world. In Africa, high  $F^-$  levels were found in numerous countries and chiefly reported from the vicinity of the East African Rift Valley (Kut et al., 2016; Kimambo et al., 2019; Ijumulana et al., 2021; Sunkari et al., 2022). In Latin America, the elevated levels were largely reported from Argentina, Mexico, and Brazil. However, studies from other South American countries are limited (Gomez et al., 2009; Alarcón-Herrera et al., 2013; Martins et al., 2018). While in Asia, China, Mongolia, and Indian subcontinents have often recorded high  $F^-$  (Wu et al., 2015; Ali et al., 2016; 2019; 2022; Rahman et al., 2020; Khattak et al., 2022; Ling et al., 2022). For example, Chandrajith et al. (2020) investigated drinking wells in Sri Lanka and found that  $F^-$  contaminates nearly 50% of the wells in dry zones. Coastal aquifers of China were also found to be contaminated (Cao et al., 2023). Prevalent regions containing elevated  $F^-$  in groundwater were reported in many countries; some of the prominent studies that investigated  $F^-$  contamination across the globe are mentioned here: India (Jacks et al., 2005; Ali et al., 2016); China (Dong et al., 2022; Hao et al., 2022; Wu et al., 2015); Ethiopia (Rango et al., 2012); Mongolia (Guo et al., 2012); Kenya (Olaka et al., 2016); and Malawi (Addison et al., 2020). Ali et al. (2016) earlier documented the  $F^-$  contamination and systematically investigated the worldwide situation. Consequently, other reviews, such as by Chowdhury et al. (2019), have reported five  $F^-$  bearing belts globally linked to the prevalence of  $F^-$  contamination. Further, Yadav et al. (2019a) investigated the Asian continent on  $F^-$  contamination. Similarly, Ali et al. (2019), Mukherjee and Singh (2018), and Podgorski et al. (2018) studied  $F^-$  contamination in Indian groundwater. Nordstrom and Smedley (2022) and Podgorski and Berg (2022) are the most recent documents on worldwide  $F^-$ . Though, the occurrence and intensity of the  $F^-$  contamination were reported, the association between  $F^-$  and its influencing factors have not been dealt with in detail.

Therefore, the current study aims to identify the inter-relationship between  $F^-$  with geology, hydro-meteorology, and potential hydro-chemical parameters that influence the genesis and mobilization of  $F^-$  into the groundwater. This study is based on the systematic development of a large secondary dataset with more than 2000 drinking water wells published in the past two decades in India. Thus, this work aims to (a) analyze the sources, distribution, genesis, and mobilization of high  $F^-$  concentrations in groundwater, (b) correlation between co-contamination of  $F^-$  with other potential ions, and (c) health impacts and potential remedies in India. Lastly, this review concluded with significant challenges and proposed future research to tackle high  $F^-$  groundwater and put forward the option of safe and clean drinking water supply in India.

### Distribution of high fluoride groundwater in India

Groundwater with high fluoride ( $F^-$ ) is now reported as a major global contaminant (Kumar et al., 2023a; Neeti et al., 2023; Podgorski and Berg 2022; Li et al., 2021; Ali et al., 2016). Nordstrom and Smedley (2022) reported that fluorosis in India was first recognized in 1937.

Kumar et al. (2019) investigated the Indo-Gangetic Alluvial plain and reported 5.8 mg/L of  $F^-$  in groundwater. In Bihar, Mridha et al.

(2021) reported that groundwater samples from Gaya and Nawada districts are highly contaminated with  $F^-$ , and found mean value of  $2.15 \pm 1.78$  mg/L and  $3.2 \pm 1.64$  mg/L, respectively. Kumari and Mishra (2023) also reported that  $F^-$  levels in groundwater of Munger district were up to 12 mg/L. Nizam et al. (2022a) studied the Kanpur region of the Gangetic plain and observed 5.2 mg/L of  $F^-$ . High values of  $F^-$  were frequently reported in the groundwater of Haryana state. For example, Yadav et al. (2019b) reported 18 mg/L, and Ali et al. (2018) reported 18.5 mg/L of  $F^-$  from the Mahendergarh and Bhiwani districts, respectively. Malik and Kavita (2022) reported 4.5 mg/L of  $F^-$  from the Karnal district. In adjoining Punjab, Duggal and Sharma (2022) observed more than 10 mg/L of  $F^-$  from few localities in the Malwa region. Ahada and Suthar (2018) investigated southern regions of Punjab and found up to 5 mg/L of  $F^-$ . Recently, Nizam et al. (2022b) investigated the Patiala district, Punjab, and found the  $F^-$  value up to 9.2 mg/L. In Rajasthan state, 5.74 mg/L of  $F^-$  was reported from the Jhunjhunu district (Jandu et al., 2021). The highest value reported from Jaisalmer of Rajasthan was 6.6 mg/L (Singh and Mukherjee, 2015).

In East India, Mukherjee et al. (2019) and Thapa et al. (2017) reported 18.25 mg/L and 20.4 mg/L of  $F^-$  from the drinking well of West Bengal state, which is higher than ten folds of the safe limit of WHO and BIS. However, the geogenic sources from West Bengal are undocumented.

Southern Indian states are long known to be prone to  $F^-$  contamination due to bedrock. Hot spots like the Nalgonda district, Telangana (previously in Andhra Pradesh) have granitic rocks with  $F^-$  concentration reported up to 1706 mg/kg by Mondal et al. (2009) and as high as 3125 mg/kg by Reddy et al. (2010). Prevalence of endemic fluorosis in this district and adjacent areas has led to several studies on the occurrence, sources, and distribution of  $F^-$  in groundwater. Groundwaters from this district have recurrently reported elevated  $F^-$  ranging from 3 to 7.6 mg/L (Reddy et al., 2010), 0.7 to 19 mg/L (Mondal et al. (2009)), and 0.1 to 8.8 mg/L (Brindha and Elango, 2011; Brindha and Elango, 2013). Other districts in Telangana, such as the Yadadri-Bhuvanagiri district, have also recently recorded a maximum of 3.56 mg/L  $F^-$  in groundwater (More et al., 2021). The adjacent state of Andhra Pradesh has often reported high  $F^-$  in its groundwaters.  $F^-$  in Andhra Pradesh from various districts, such as the Prakasam district, ranged between 0.7 and 2.8 mg/L (Subba Rao, 2017), and from the Guntur district, ranged between 0.3 and 2.3 mg/L (Subba Rao, 2003).

Weathering of granite and granitic gneiss host rocks in the Ilkal area of Karnataka had led to  $F^-$  in groundwater from 0.3 to 6.5 mg/L (Tirumalesh et al., 2007). Studies in the granitic belt of Badami Taluk and Hunagund Taluk of Karnataka consistently recorded  $F^- > 2$  mg/L in all investigated locations (Gaonkar et al., 2019). Several other taluks and districts also have  $F^-$  at excessive levels, such as in the Indi taluk (0.26 to 3.57 mg/L) reported by Ugran et al. (2017), and Kolar district (0.36 to 3.34 mg/L) and Thumkur district (0.78 to 5.35 mg/L) reported by Mamatha and Rao (2010).

Dharmapuri district in Tamil Nadu is another  $F^-$  endemic area in southern India. Here,  $F^-$  between 0.15 and 6.48 mg/L was reported by Jagadeshan et al. (2015a) from epidote hornblende biotite gneiss and charnockite areas containing average  $F^-$  of 59.4 mg/kg and 35.8 mg/kg, respectively (Jagadeshan et al., 2015b). Maximum  $F^-$  from Tiruvannamalai region in Tamil Nadu was reported to be 3.2 mg/L from open wells and 3.8 mg/L in bore wells (Chicas et al., 2022). Groundwater analyzed from areas with charnockite rocks in Madurai district (Thivya et al., 2017) and Dindigal district (Ramachandran et al., 2012) in Tamil Nadu had  $F^-$  up to 1.8 mg/L and 2.5 mg/L, respectively. In the northern part of Tamil Nadu, namely in Kancheepuram district,  $F^-$  was observed to range from 1 to 3.24 mg/L by Dar et al. (2011).

Compared to the studies on  $F^-$  in the southern Indian states, Kerala has only a very few documented studies. However, this does not imply that groundwater has low  $F^-$  content. Reported studies from Chittur Block had a maximum of 6.3 mg/L (Shaji et al., 2018), Alleppey recorded 0.68 to 2.88 mg/L (Raj and Shaji, 2017), and Palakkad district

documented 0.2 to 5.75 mg/L of  $F^-$  (Shaji et al., 2007).

## Methodology

### Systematic searches for data mining

For the present work, systematic searches were conducted on the Google Scholar and Scopus web engines to include the maximum research articles on  $F^-$  contamination in the groundwater of India in international peer-reviewed journals (Fig. 1).

Various key words like 1) fluoride in India, 2) fluoride in groundwater of India, 3) fluoride in alluvial plains, 4) fluoride in arid and semi-arid regions, and 5) fluorosis in India; were used to collect maximum articles. Various articles falling in the following criteria were discarded: 1) studies conducted on water other than the groundwater, and 2) articles specifying only min-max ranges of  $F^-$ . After deletion, all articles were thoroughly studied. At this stage, there were 64 research articles. Further, an Excel sheet (Microsoft Office) was prepared where all the parameters along with  $F^-$  level were compiled. For the bivariate plots, elevated  $F^-$  content with other physio-chemical parameters were only considered (except some exceptions). At this stage, it was found that the articles investigated for the  $F^-$  contamination were not studied with all the hydro-chemical parameters. So, even if one parameter was mentioned, the article is considered for this work. Therefore, the number of variables varies during the correlation analysis. Finally, a total of more than 2000 wells (hand pumps, tube wells, and bore wells) were compiled along with potential parameters recorded in the groundwater for this study.

As mentioned, research articles in the international domain from the last two decades comprising more than 2000 drinking water wells across India were investigated. Further, statistical correlation of  $F^-$  with other potential hydro-chemical parameters was performed to investigate the possible genesis and mobilization of  $F^-$  release into the groundwater (Fig. 2). In some studies, all hydro-chemical parameters were not analyzed; however, available parameters were used for this study; and thus, differ in the number of variables during the statistical correlation.  $F^-$ , along with other hydro-chemical parameters, were initially considered for statistical correlation. However, during the analysis, it was observed that a significant correlation could not be drawn by considering all the data of  $F^-$ . Therefore,  $F^-$  values greater than the safe limit

(>1.5 mg/L) were only considered for in-depth statistical correlation. This study suggests that nearly one-third of India's drinking wells have elevated levels of  $F^-$ , thus a major concern for the water supply. The results revealed significant findings and are discussed in the subsequent sections.

## Results and discussion

The unconsolidated alluviums are dominantly composed of sand, silt, and clay mixed with kankars (calcareous nodules) with varying proportions found to form suitable aquifers in India. The hard crystalline rocks also form suitable aquifers wherever they were found to be jointed and fractured (Saha et al., 2016; 2020). Groundwater largely occurs in these aquifers with distinct quantity and quality. In general, the wells installed in the unconsolidated aquifers have higher discharge rates than the crystalline ones. The inhabitants primarily depend on the groundwater which is extensively used for drinking from both aquifers.

In this study, a detailed statistical analysis of  $F^-$  was conducted with various other potential hydro-chemical parameters for the evaluation of possible genesis, mobilization, and causes of contamination of  $F^-$  in the groundwater of India. The  $F^-$  content from both of the aquifers are included in the present work. The association of hydrochemical parameters with  $F^-$  are discussed below.

### Bivariate plot of fluoride with hydro-chemical parameters

#### pH and EC

The elevated  $F^-$  content with pH showed an insignificant positive correlation ( $n = 1155$ ; Fig. 2a). Box and Whisker diagram was plotted for all the  $F^-$  values, which suggests that the groundwater with elevated  $F^-$  levels has higher pH values (Fig. S1). The bivariate plot confirmed that the pH plays a pivotal role in triggering the  $F^-$  from fluorine-bearing sediments or rocks to the aqueous medium (Ali et al., 2016). Further, the statistical correlation between  $F^-$  (>1.5 mg/L) with electrical conductivity (EC) was performed ( $n = 1079$ ; Fig. 2b). The bivariate plot between  $F^-$  and EC revealed that the  $F^-$  has weak positive correlation with EC. This is possible due to the longer water-rock/sediment interaction, which could enrich high  $F^-$  content in the groundwater (Ali et al., 2021).

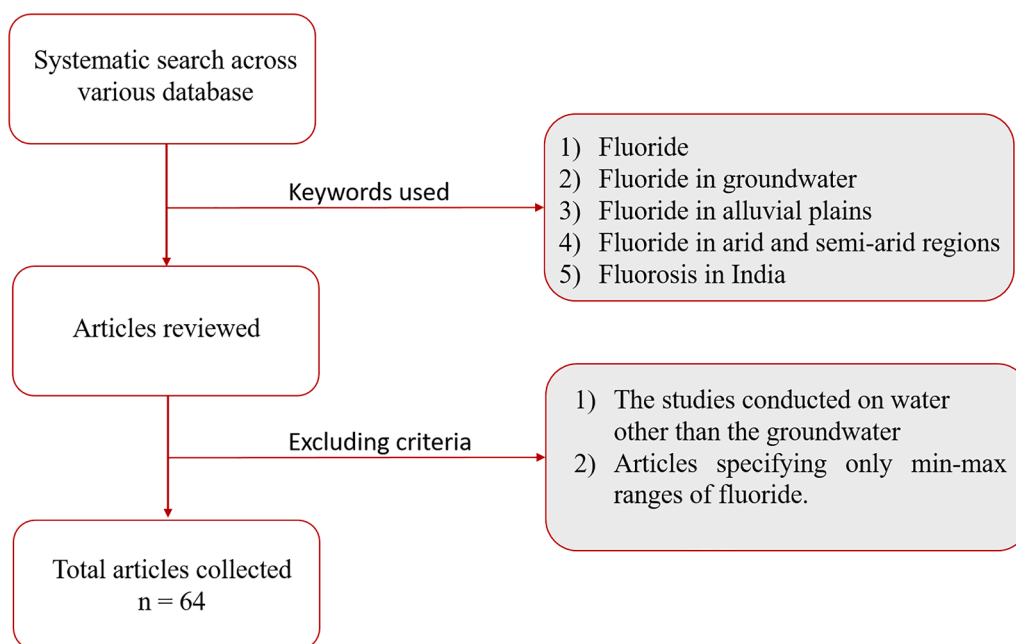
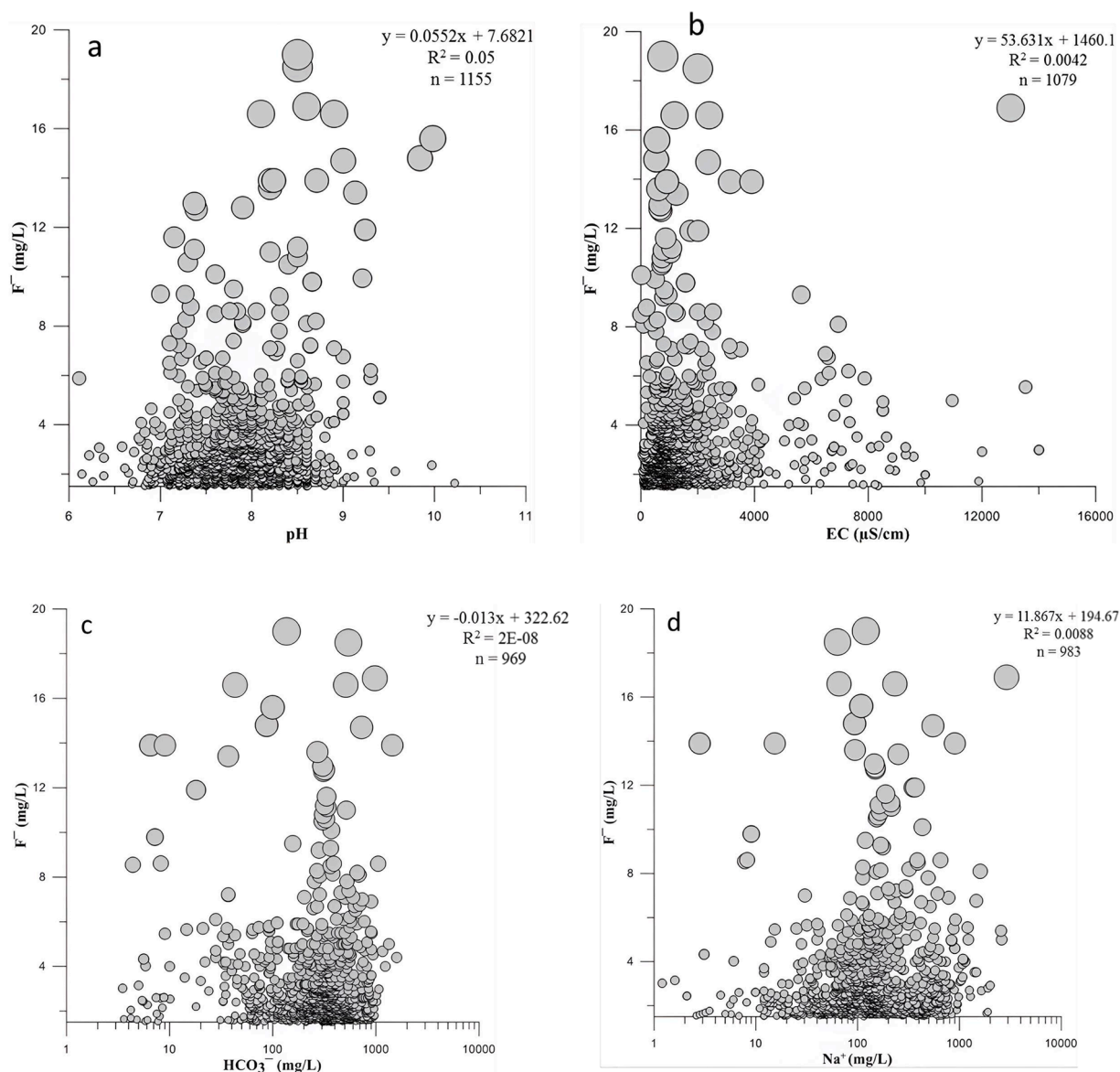


Fig. 1. Flowchart showing exclusion and inclusion criteria of articles selection.



**Fig. 2.** Bivariate plots between  $F^-$  with (a) pH, (b) EC, (c)  $HCO_3^-$ , (d)  $Na^+$ , (e)  $SO_4^{2-}$ , (f)  $NO_3^-$ , (g)  $Mg^{2+}$ , (h)  $Ca^{2+}$ , (i)  $K^+$ , (j) Fe, and (k)  $SiO_2$  (bubbles size is proportional to  $F^-$  content; continued,  $n = 64$  and given here alphabetically).

Acharya et al. (2018); Adimalla et al. (2018); Adimalla et al. (2018a); Ahada and Suthar (2018); Ali et al. (2021); Ali et al. (2018); Arulbalaji and Gurugnanam (2017); Arveti et al. (2011); Batabyal (2017); Bhuiyan and Ray (2017); Chatterjee et al. (2008); Dar et al. (2011); Das et al. (2003); Datta et al. (2014); Datta et al. (1999); Devadas et al. (2007); Duraiswami and Patankar (2011); Gawle et al. (2021); Gupta and Misra (2018); Gupta et al. (2006); Haritash et al. (2008); Jha et al. (2010); Joshi and Seth (2011); Kantharaja et al. (2012); Karthikeyan et al. (2010); Kashyap et al. (2020); Keesari et al. (2014); Khanna (2015); Kodate et al. (2007); Kumar (2017); Kundu et al. (2001); Madhnure and Malpe (2007); Madhnure et al. (2007); Meenakshi and Malik (2004); Misra and Mishra (2007); Mondal et al. (2014); Mondal et al. (2009); Narsimha and Sudarshan (2017); Pandith et al. (2017); Prasad and Rao (2018); Raj and Shaji (2017); Raju (2017); Raju et al. (2009a); Raju et al. (2009b); Rao (2017); Rao et al. (2012); Rao (2009); Rao (2008); Sahu et al. (2017); Salve et al. (2008); Saxena and Ahmed (2003); Shaji et al. (2007); Shankar et al. (2008); Sharma et al. (2012); Singh et al. (2013); Sudarshan et al. (2018); Sujatha (2003); Sujatha and Reddy (2003); Tirumalesh et al. (2007); Tiwari et al. (2020); Usham et al. (2018); Vikas et al. (2009); Viswanathan et al. (2009); and Yadav et al. (2021).

#### $HCO_3^-$ , $Na^+$ , $SO_4^{2-}$ , and $NO_3^-$

Bivariate plot between  $F^-$  and  $HCO_3^-$  revealed a statistically insignificant correlation (Fig. 2c). Further, the bivariate plot of  $F^-$  with  $Na^+$  suggests a statistically weak positive correlation (Fig. 2d). This correlation is well supported with our earlier studies (Ali et al., 2016; 2021). In another plot between  $F^-$  and  $SO_4^{2-}$ , positive correlation was observed (Fig. 2e). The bivariate plot of  $F^-$  with  $NO_3^-$  revealed negative correlation (Fig. 2f). This supports the lower possibilities of anthropogenic involvement in  $F^-$  enrichment in Indian groundwater.

#### $Mg^{2+}$ , $Ca^{2+}$ , and $K^+$

Other ions, such as  $Mg^{2+}$ ,  $Ca^{2+}$ , and  $K^+$ , were also evaluated for this study. The plot of  $F^-$  with  $Mg^{2+}$  also revealed negative correlation (Fig. 2g). The bivariate plot between  $F^-$  and  $Ca^{2+}$  revealed an insignificant correlation (Fig. 2h). Further, the plot between  $F^-$  and  $K^+$  was also attempted, which revealed poor positive correlation between each of the ions (Fig. 2i). This correlation also supports the geogenic sources of  $F^-$  which simultaneously releases  $K^+$  with  $F^-$  (Ali et al., 2016).

#### Fe and $SiO_2$

The plot between  $F^-$  and Fe revealed an insignificant negative

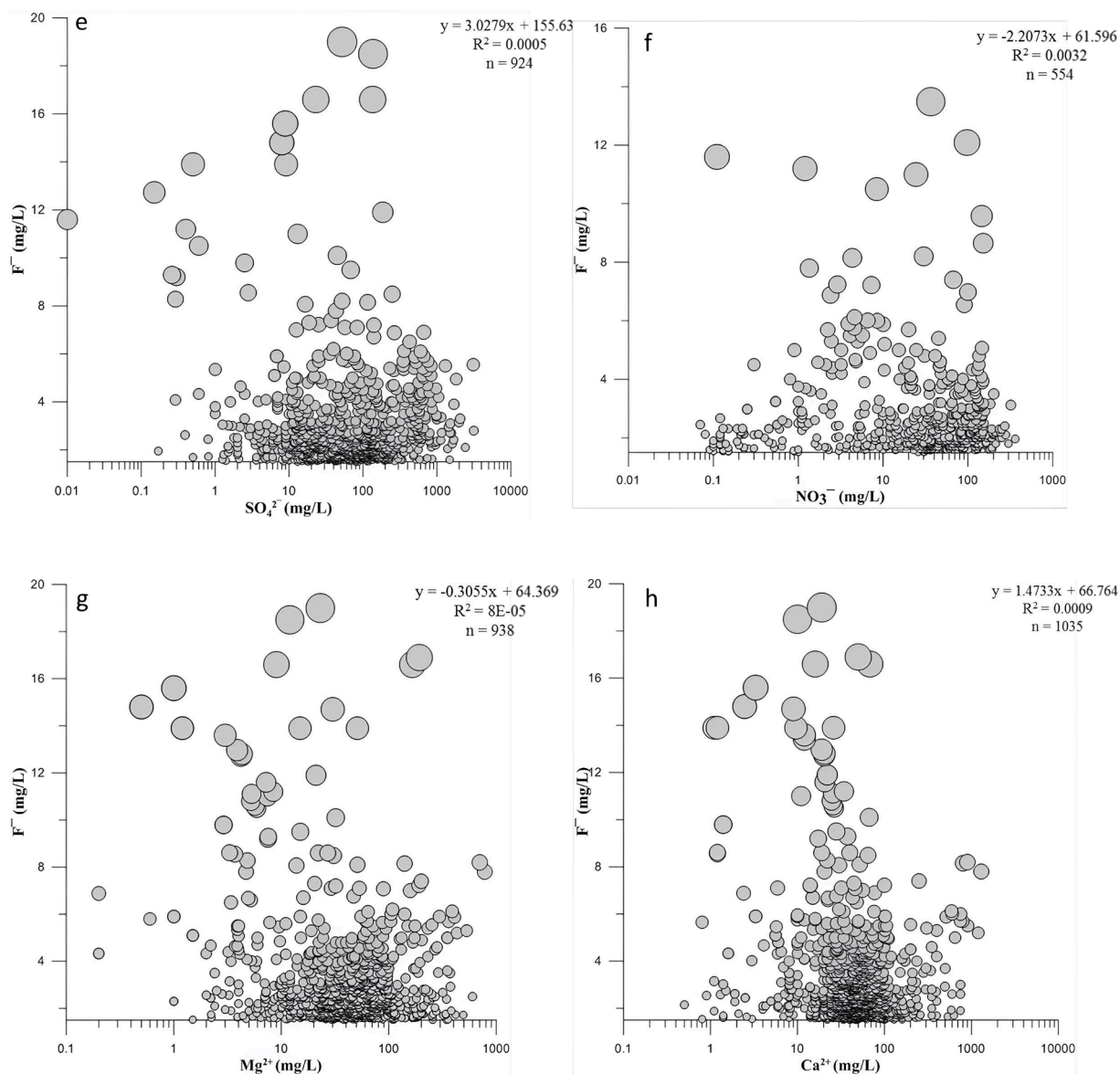


Fig. 2. (continued).

correlation, although the correlation is only based on the limited available Fe data (Fig. 2j). The bivariate plot between  $F^-$  and  $SiO_2$  is crucial for revealing the geogenic contamination. The plot has also shown positive correlation between these two parameters (Fig. 2k). This suggests that the geogenic sources are most likely possible contamination sources which could be linked to the weathering of fluorine-bearing silicates.

#### Statistical correlation

Statistical correlation of  $F^-$  with other parameters is shown in Table 1. For this work, statistical analysis is broadly divided into two groups aiming to study the possible association with  $F^-$  contamination: 1) all  $F^-$  values and 2)  $F^- > 1.5$  mg/L.

Table 1 showed a noticeable positive correlation of pH with  $F^-$ . This revealed that alkalinity has a pivotal role in the mobilization of  $F^-$  into the groundwater (Ali et al., 2016). In addition, the table also suggests a noticeable positive correlation of  $F^-$  with  $SiO_2$  and  $K^+$ . This is possibly linked to the weathering of the fluorine-bearing silicates. Further, Box and Whisker diagrams were plotted for all the states of India. This is created to highlight the regions with  $F^-$  concentration above the safe

limit to demarcate the contaminated states based on the research conducted in the last two decades (Fig. 3).

#### Identification of fluoride-polluted areas

This study highlighted the states having  $F^-$  content greater than the safe limit in drinking water of India. States like, Andhra Pradesh, Chhattisgarh, Haryana, Jammu and Kashmir, Kerala, and Punjab, are highly contaminated (Fig. 3). Further, Fig. 3 also revealed that except significant parts of Jammu and Kashmir, other states falling in the arid and semi-arid regions are typically contaminated by  $F^-$ . Further, this study suggests that the  $F^-$  contamination is more predominant in states having drinking water in alluvial zones (Delhi, Gujarat, Haryana, Punjab, Rajasthan, Uttar Pradesh, and West Bengal) than the states having hard rock aquifers (including all states other than the alluvial ones; Fig. S3). This could be due to the leaching of  $F^-$  in the alluvium derived from the hard rocks, whereas  $F^-$  content in hard rocks are least mobilized. Further, this study suggests that the  $F^-$  are commonly found in the alluvial areas, mainly in arid and semi-arid regions, followed by the hard rocks regions (Fig. S4). Further, this study does not include most of the eastern part of India, as few studies were conducted in those regions.

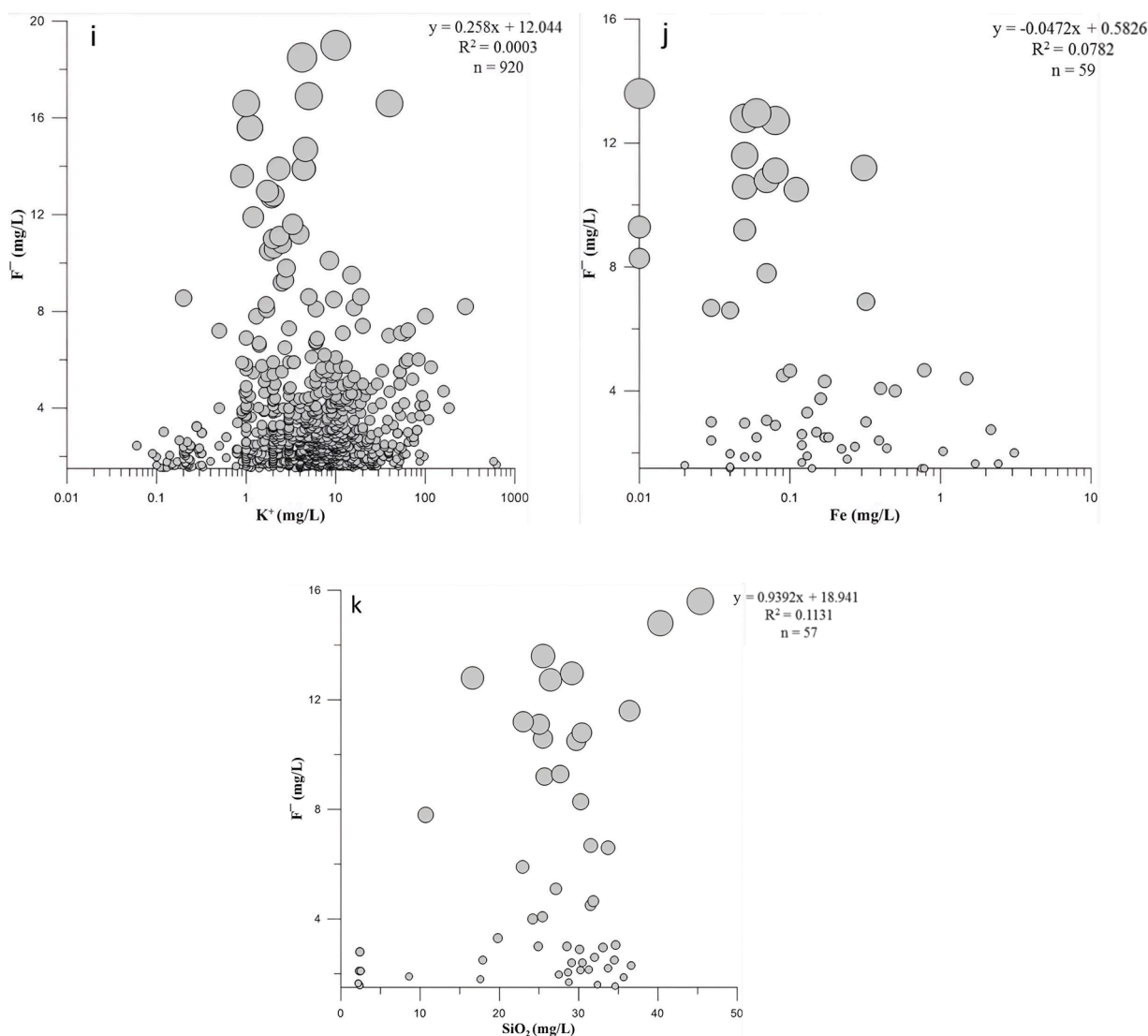


Fig. 2. (continued).

Finally, all  $F^-$  content were plotted on the hydrogeological map of India. For this work, each data point in the groundwater was initially classified into three groups, i.e., less than 1.5 mg/L, 1.5–3 mg/L, and more than 3 mg/L (Fig. 4). In this study, prevalent contaminated regions were shown as a single point on the hydrogeological map of India (Fig. 4; [www.cgwb.gov.in](http://www.cgwb.gov.in)). For clear distinction, five data pertaining to each point were plotted on the map. It is evident from Fig. 4 that the  $F^-$  concentration in the groundwater greater than the safe limit is typically restricted to the semi-arid and arid regions of India.

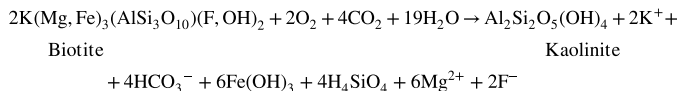
This study revealed that alkalinity plays a pivotal role in triggering  $F^-$  into the groundwater from the fluorine-bearing sediments/rocks. The contamination is more pronounced in the arid and semi-arid areas of alluvial plains than in the hard rock regions. The significant correlation of elevated  $F^-$  with  $SiO_2$  and  $K^+$  suggests the possibility of the dominance of geogenic sources over anthropogenic and is possibly linked to the weathering of the silicates (Fig. 5). The results showed that the  $F^-$  contamination in the groundwater is primarily contaminated by geogenic sources. This study highlighted the prevalent areas and thus significant for policymakers where safe water supply must be priorities.

### Genesis and mobilization of fluoride in groundwater

$F^-$  in natural water is primarily governed by pH, anion exchange between hydroxyl groups with  $F^-$  and residence time of water in the aquifer (Apambire et al., 1997). The most accepted mobilization process is ion exchange of  $F^-$  by hydroxyl ions ( $OH^-$ ; Edmunds and Smedley 2013; Ali et al., 2018). It was also reported that the aquifers with low hydraulic conductivity retain water for a longer time, resulting in elevated  $F^-$  levels. However, this association is not well documented.

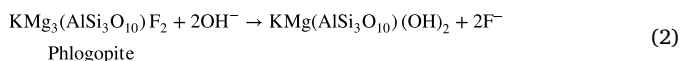
High evaporation and scanty rainfall in the arid and semi-arid regions facilitate the release of  $F^-$  from the host rocks. Handa (1975) earlier observed a link between sodium bicarbonate facies in groundwater and high  $F^-$ . Documentation of worldwide studies (Ali et al., 2016) showed that  $F^-$  is significantly negatively correlated with calcium ions and positively correlated with sodium and bicarbonate ions. While limited studies are conducted on the identification of contamination sources of  $F^-$  globally (Ali et al., 2021). Ali et al. (2021) investigated the Delhi older alluviums in India and attributed mica as a possible geogenic source for  $F^-$  ions. Ali (2022) recently observed that  $F^-$  in the

groundwater of Delhi is primarily controlled through water-sediment interactions, local hydro-meteorological conditions, and mean water residence time. Further, [Ali \(2022\)](#) investigated the possible release of  $F^-$  from sediments/rocks. The release of  $F^-$  from common  $F^-$  bearing minerals is given below:



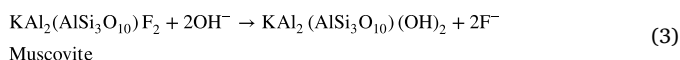
(1)

(Chakraborty et al., 2022)



(2)

(Guo et al., 2007)



(3)

(Guo et al., 2007)

Water-rock interaction is one of the most significant processes resulting in the operation of various other processes leading to the enrichment of  $F^-$  in groundwater. [Ali \(2022\)](#) recently reported that the enrichment of  $F^-$  is primarily governed via sediment geochemistry, water-sediment interactions, residence time, and existing local hydro-meteorological (temperature and rainfall) condition in Delhi. [Kumar et al. \(2019\)](#) concluded that the weathering of hard rocks in the Indo-Gangetic alluvial plains was responsible for high  $F^-$  in the region. However, limited studies only reported the sources of  $F^-$  in the groundwater of India ([Ali et al., 2018; 2021](#)).

### Health impacts of drinking high fluoride groundwater

Extensive use of high  $F^-$  groundwater for drinking poses potential threat to humans. As discussed earlier, the importance of  $F^-$  studies has increased due to their adverse effects on humans. The consequence of  $F^-$

contaminated water is evident in the form of dental and skeleton fluorosis. This may lead from initial mild dental fluorosis to prolonged effects of irreversible crippling skeleton fluorosis ([Nordstrom and Smedley 2022; Table 2](#)).

$F^-$  within the permissible limit is also a boon to humans, which helps

in formation of tooth enamels and bone mineralization. Therefore, it is also said to be a sword with two edges. It was estimated that nearly 200 million people globally are potentially exposed to fluorosis ([Edmunds and Smedley 2013](#)), and significant vulnerable population lives jointly in India and China ([Podgorski and Berg 2022](#)). Predicting affected people from fluorosis is challenging; therefore, the exposed number is infect clearly more than estimated. Recently, random forest modeling was also performed for  $F^-$  prediction and demarcation of contaminated areas on a regional scale in India ([Sarkar et al., 2023; Podgorski and Berg 2022](#)).

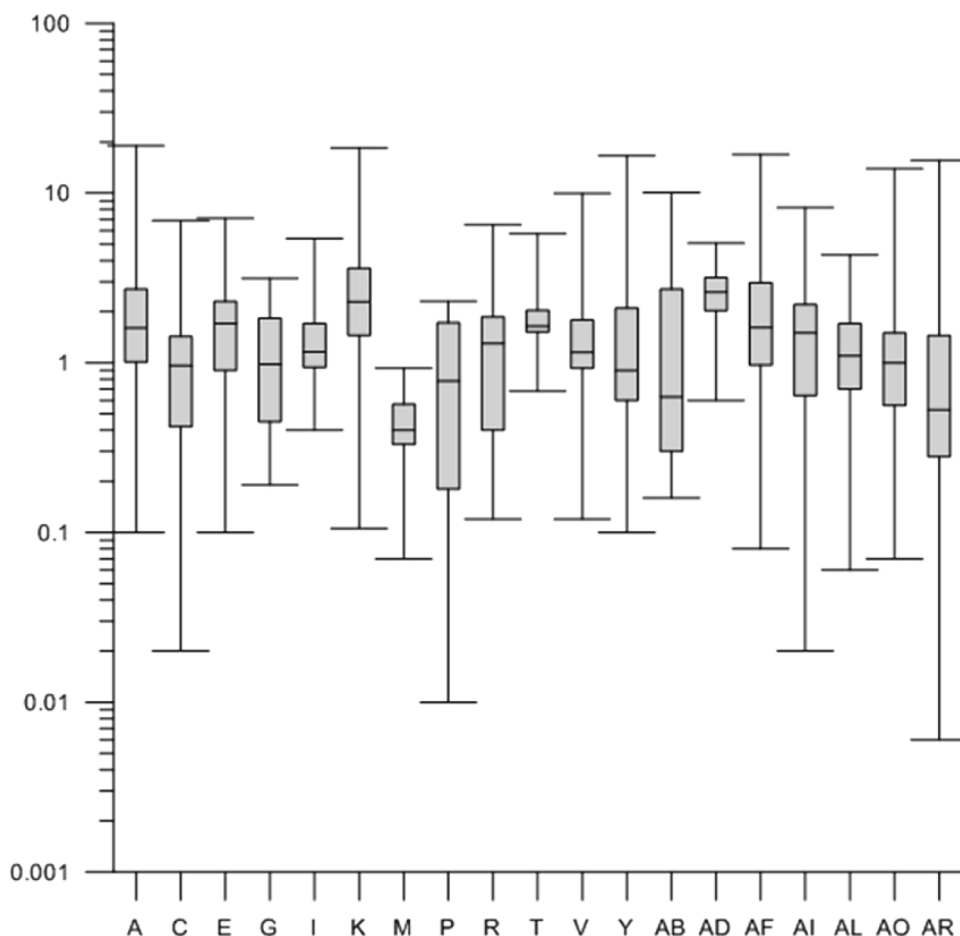
Numerous researchers have evaluated the probabilistic non-carcinogenic human health risk assessment of  $F^-$  consumption ([Ali et al., 2019; Li et al., 2019; Keramati et al., 2019; Kaur et al., 2020; Kumar et al., 2023](#)). These studies reported that children are highly vulnerable than adults due to their lower body weight. Few studies documented the noticeable link between pregnant women and  $F^-$  exposure. On examining the  $F^-$  levels in groundwater and the potential risk through the drinking water pathway, [Green et al. \(2019\)](#) reported that  $F^-$  exposure during pregnancy can be associated with lower IQ in children. Studies also showed negative effects on the development of children intelligence ([Karimzade et al., 2014](#)). However, this association needs further investigation. Further, [Kheradpisheh et al. \(2018\)](#) investigated  $F^-$  links with human thyroid disease and found a good relation between them. [Ahmad et al. \(2022\)](#) recently reported that the kidney, liver, and heart are three crucial parts of the human body exposed to excess consumption of  $F^-$ , which could accelerate various diseases.

**Table 1**

Correlation coefficient between fluoride and other hydro-chemical parameters shown as heat map for better visualization.

	$F^-$	$F^- > 1.5 \text{ mg/L}$
$F^-$	1	1
Fe	-0.17 <sup>1</sup>	-0.28 <sup>13</sup>
$HCO_3^-$	0.05 <sup>2</sup>	0.00 <sup>14</sup>
$SiO_2$	0.23 <sup>3</sup>	0.34 <sup>15</sup>
$SO_4^{2-}$	0.10 <sup>4</sup>	0.04 <sup>16</sup>
$NO_3^-$	0.01 <sup>5</sup>	-0.06 <sup>17</sup>
$Cl^-$	0.05 <sup>6</sup>	0.06 <sup>18</sup>
$Mg^{2+}$	0.03 <sup>7</sup>	-0.01 <sup>19</sup>
$K^+$	0.00 <sup>8</sup>	0.02 <sup>20</sup>
$Ca^{2+}$	0.00 <sup>9</sup>	0.03 <sup>21</sup>
$Na^+$	0.17 <sup>10</sup>	0.09 <sup>22</sup>
pH	0.17 <sup>11</sup>	0.22 <sup>23</sup>
EC	0.10 <sup>12</sup>	0.06 <sup>24</sup>

$n^1 = 153; n^2 = 2347; n^3 = 255; n^4 = 2268; n^5 = 1464; n^6 = 2591; n^7 = 2222; n^8 = 2226; n^9 = 2391; n^{10} = 2370; n^{11} = 2688; n^{12} = 2291; n^{13} = 55; n^{14} = 968; n^{15} = 57; n^{16} = 901; n^{17} = 554; n^{18} = 1054; n^{19} = 938; n^{20} = 920; n^{21} = 1035; n^{22} = 983; n^{23} = 1155; n^{24} = 1079$  (n is the number of data available for correlation).



**Fig. 3.** Box and Whisker diagram showing the range of  $F^-$  concentration (mg/L) in the states of India (Fig. S2).

A: Andhra Pradesh; C: Assam; E: Chhattisgarh; G: Delhi; I: Gujarat; K: Haryana; M: Jammu and Kashmir; P: Jharkhand; R: Karnataka; T: Kerala; V: Madhya Pradesh; Y: Maharashtra; AB: Odisha; AD: Punjab; AF: Rajasthan; AI: Tamil Nadu; AL: Telangana; AO: Uttar Pradesh; AR: West Bengal.  $n^A = 439$ ;  $n^C = 64$ ;  $n^E = 33$ ;  $n^G = 44$ ;  $n^I = 40$ ;  $n^K = 122$ ;  $n^M = 26$ ;  $n^P = 32$ ;  $n^R = 103$ ;  $n^T = 31$ ;  $n^V = 43$ ;  $n^Y = 207$ ;  $n^{AB} = 36$ ;  $n^{AD} = 76$ ;  $n^{AF} = 238$ ;  $n^{AI} = 327$ ;  $n^{AL} = 242$ ;  $n^{AO} = 345$ ;  $n^{AR} = 223$  (n is the number of data available for correlation. Indian states boundaries with name are shown in the Fig. S2).

Kadam et al. (2020) and Senthilkumar et al. (2021) investigated western India and observed that children and infants are vulnerable to fluorosis. Further, Duggal and Sharma (2022) investigated the northern region of India and also observed that children are more vulnerable to fluorosis than other age groups in the Punjab state. Ali et al. (2019) reported that children are more likely to be highly vulnerable than adults in numerous states of India. Kumar et al. (2023a) summarized the potential  $F^-$  impacts on humans and observed that high  $F^-$  consumption might affect the liver, kidney, and reproductive systems.

Karunanidhi et al. (2020) investigated the Coimbatore region of South India and found that children are more vulnerable to adult females and males. Adimalla and Qian (2022) also studied the southern region and found that infants are more vulnerable than other age groups. Thabrez et al. (2023) reported that people from the Sira region in Karnataka are more prone to dental fluorosis than skeletal fluorosis. This study also showed that children (<8 years) face moderate risk of dental caries, dental fluorosis, and skeletal fluorosis, whereas adolescents and adults do not encounter such risk. Clinical studies by Ugran et al. (2017) found  $F^-$  content ranging from 0.34 to 3.41 mg/L in urine samples of people who consume elevated  $F^-$  groundwater. This study also observed symptoms of clinical fluorosis among these sample populations, which include arthritis, joint pains, gastrointestinal discomfort, and lower limb deformities (Ugran et al., 2017). Jose et al. (2014) conducted a survey among school students and observed dental fluorosis in 36% of the sample population, more prevalent in children aged between 9 and 10 years and with boys more frequently affected by dental fluorosis than girls.

#### Potential remedies/techniques for high fluoride groundwater in India

Various defluoridation methods were earlier investigated and documented by numerous researchers like Mohapatra et al. (2009), Jagtap et al. (2012), Vithanage and Bhattacharya (2015), Kut et al. (2016), Yadav et al. (2019), Kashyap et al. (2021), and Kumar et al. (2023a). The defluoridation methods can efficiently remove up to 70–90% from various defluoridation methods; providing sustainable  $F^-$  free water to large communities is challenging. However, cost-effective defluoridation methods impose a potential challenge on the scientific community. Fluoridation issue is highly debatable even though, in the United States of America; the optimum level of  $F^-$  is mandated in the water supply ([www.cdc.gov](http://www.cdc.gov)). Solving this  $F^-$  problem remains a major challenge even today, especially in developing countries. Treating the water using ion exchange or precipitation methods is technically feasible and has been tried. However, these methods have typically been met with limited success in developing countries. For example, in India, defluoridation technologies have been implemented nationwide for a safe and clean drinking water supply.

Earlier, several studies have reported that the “Nalgonda procedure,” designed by NEERI, Nagpur, is the defluoridation technology most commonly employed for domestic use at the grassroots level (Nawlakhe et al., 1975; Bulusu et al., 1979; Nawlakhe and Rao, 1990; Nawlakhe and Paramasivam, 1993). Community-oriented “defluoridation plant” was set up in the Nalgonda district of Andhra Pradesh to remove  $F^-$  from potable water; NEERI invented the technique in 1961. In the 1930’s, activated alumina was used as an effective defluoridation method for domestic water uses. Using activated alumina, the Sathya Sai University for Higher Education, Puttaparthi, created the Prasanthi technology.



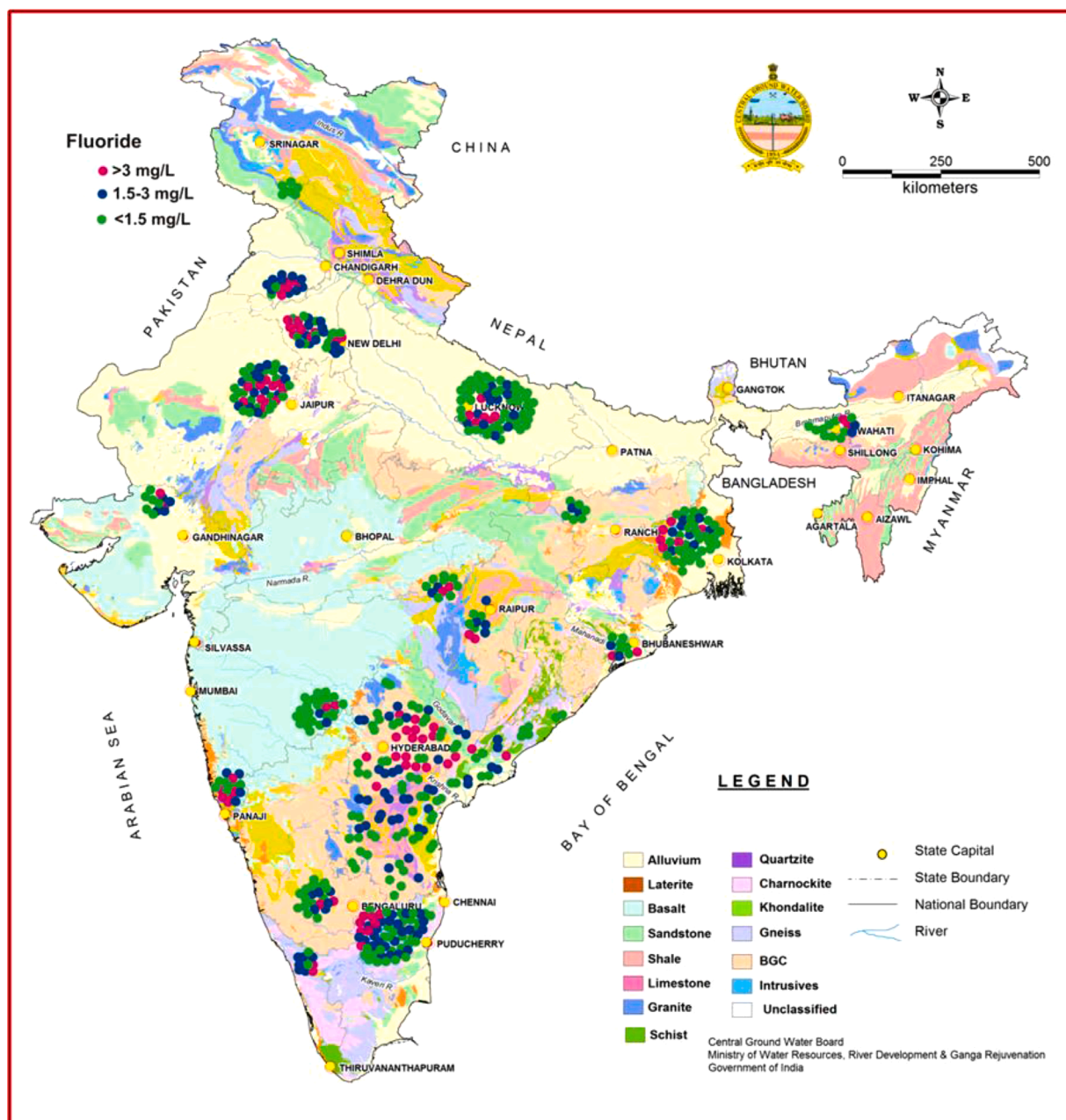


Fig. 4. Fluoride concentration in the groundwater of India (five data points pertaining to each point are shown on the hydrogeological map of India; after CGWB, India).

Drawbacks to this technology include high cost, the need for skilled workers to reprocess the filter material, and a byproduct of slightly higher concentrations of residual aluminum (Agarwal et al., 1999). Ayoob et al. (2008) reported defluoridation methods most frequently in locations where  $F^-$  contamination is a problem via coagulation and adsorption/ion exchange. In addition, Ayoob et al. (2008) summarized that in several developing nations, including India and Tanzania, the Nalgonda method and bone char adsorption—or integrated approaches—have been applied at both individual and communal levels. Even though membrane separation methods guarantee high-quality water, they are "highly technical and expensive" alternatives for most fluoride-endemic countries. Electrochemical approaches are "energy-intensive," which provide good  $F^-$  removal. During the 1990's, it has been more common for rural Indian communities to look for home-based water quality remediation solutions for their drinking water supply. In India, since 1991, the UNICEF initiative program, defluoridation units

attached to hand pumps, and domestic defluoridation units were built using locally produced activated alumina (Eswar and Devaraj, 2011). Further, evidence of the usefulness and efficiency of activated alumina in removing  $F^-$  was provided by down-flow column tests (Srimurali and Karthikeyan, 2008). The IISc technology of  $F^-$  treatment at Kolar, Karnataka, comprises of blending cum sedimentation unit with geared manual-operated mechanical stirrer for blend of MgO and water (Rao and Mamatha, 2004; Eswar and Devaraj, 2011). Furthermore, adsorption has been reported as cost-effective and simple method for defluoridation (Agarwal et al., 2002; Karthikeyan et al., 2005). Afterward, Sulaiman et al. (2009) reported the application of granular alumina cement on fixed beds for  $F^-$  removal from groundwater and demonstrated how granules performed in rural Indian villages.

Lunge et al. (2011) have synthesized lanthanum-treated chitosan granules and applied them for groundwater monitoring through pre-packaged loose absorbents, cloth-in-pouches, and porous bamboo

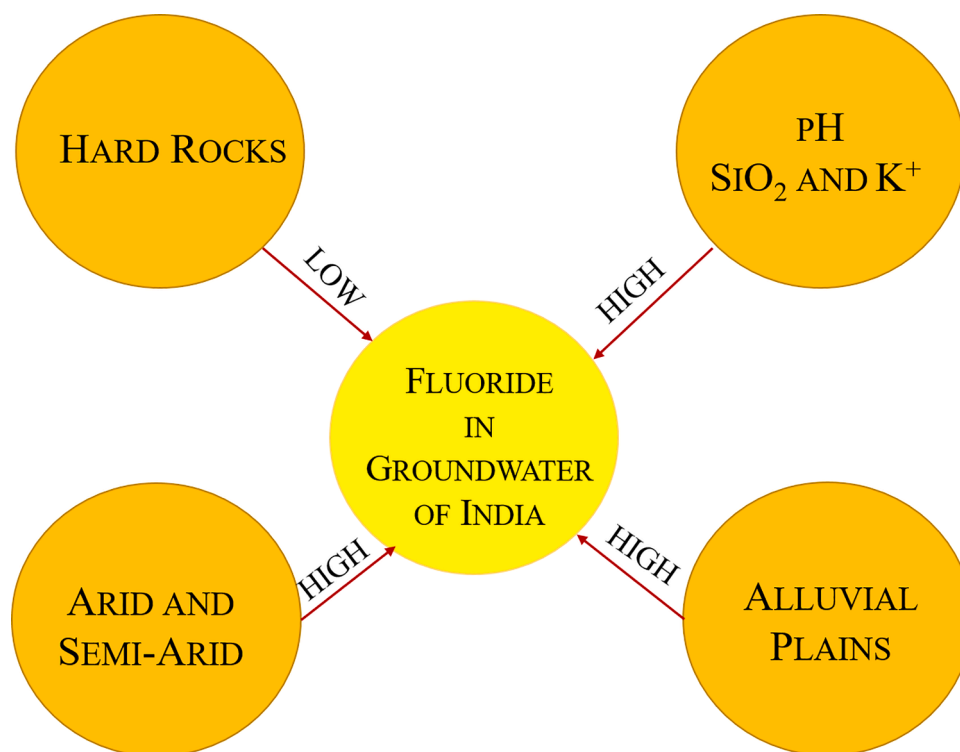


Fig. 5. Conceptual circular diagram showing major causes for high fluoride concentration in groundwater of India.

Table 2

Effects of fluoride consumption on human health (Ali 2016).

Fluoride content (mg/L)	Effect on humans
<0.5	Promotes dental caries
0.5–1.5	Required for strong bones and teeth
1.5–4.0	Dental fluorosis in children
>4.0	Dental and skeletal fluorosis
>10	Crippling skeletal fluorosis

pillars in rural areas of Madhya Pradesh. Lunge et al. (2011) reported that  $F^-$  levels were reduced to 1 mg/L for domestic utilities, such as drinking and cooking purposes, to avoid costly techniques and to implement in-situ applications. Feedback from end-users showed that implementing this technology was widely accepted at the community level in the Dhar district of Madhya Pradesh, India. Anjaneyulu et al. (2012) described that the  $F^-$  levels in rainwater collected from the upper surface were less than the desired limit/level of 1 mg/L and can be employed for cooking/drinking purposes. The current effort focuses on studies including the implications of “solar distillation for defluoridation purposes”. In Bangalore, “an inclined basin-type solar distillation setup” consisting of sand-water was used for defluoridation based on Thomas’s design (<http://www.planetkerala.org/>). Andey et al. (2013) summarized that NEERI, India, has developed electrolytic defluoridation (EDF) technology for treating excessive  $F^-$  in water sources. EDF technology offers a technologically sound, affordable, and dependable community drinking water defluoridation system for providing safe drinking water that complies with the WHO guideline value. Iyer et al. (2013) used state-of-the-art solar-based technologies – passive reverse osmosis units – or 77% of 100 installed units and also performed interactive surveys with residents and local officials. However, none of the Nalgonda technology or activated alumina units are currently in use due to high operational costs and skilled labour requirements.

Even though activated alumina has been found to remove  $F^-$ , and its long-term commercial uses are prevented due to bacterial buildup by its sluggish rate of adsorption and pH correction (Gill et al., 2014). The

effectiveness of community-based defluoridation in avoiding severe fluorosis effect in Kaiwara village in the Indian state of Karnataka was evaluated by Isaac et al. (2020). After receiving ethical approval, this community interventional investigation was carried out in the hamlet of Kaiwara. This study highlights the significance of offering defluoridated water to people in villages as a potential fluorosis treatment. Agrawal et al., 2023 recently reported that defluoridation in rural regions of India could create potential employment opportunities. Sludge conversion into inexpensive construction raw low-cost materials can be a successful strategy for small-scale enterprises that uses both professional and unskilled labours. In this study, Agrawal et al. (2023) examined the methods for achieving this, which would give them much-needed job and transform it into a small-scale enterprise. Ramanarayanan et al. (2022) proposed that different adsorbents based on flowering trees have been employed to develop a defluoridation approach that is inexpensive and well-liked based on the adsorption process. The samples were subsequently filtered, and  $F^-$  levels were defined using a “fluoride ion-specific electrode technique”. Kumar et al. (2023b) have recently utilized rice-husk biochar for  $F^-$  removal through batch and column sorption experiments, which showed efficient sorption at pH 7. Hand pumps and tube wells are frequently used in rural regions for cooking/drinking purposes, where biochar-mediated saturated fixed bed sand columns can effectively remove  $F^-$  from surface/groundwater at a larger scale.

### Challenges and future research

Our literature review shows that high caring for teeth is not a cultural practice in the developing world. Therefore, the initial consequences are often ignored due to the unnoticeable immediate effects of  $F^-$ . Further, practical and feasible solutions for defluoridation methods are challenging. Membrane-based filtration is the most acceptable at present; however, the method is quite expensive and fails to provide water to large communities, mainly in India, and thus, only modern societies are benefited. Providing well locations with  $F^-$  level data by continuous monitoring will be a remarkable success in the reported countries. Now,

there is a need to look for safe aquifers to avoid contaminated sources. The dilution of  $F^-$  content through recharge from rain, canal, or river water is evident in many studies. Therefore, the rejuvenation of water bodies can be highly helpful (Kalpana et al., 2019; Brindha et al., 2016).

Even though, there are marked contaminated wells in few regions, many wells are still installed and frequently used for drinking due to the lack of adequate water supply in India. With no other drinking water option, inhabitants are forced to drink the contaminated water. Therefore, consumption of contaminated water is frequent. Some local defluoridation methods are available, but most are undocumented and confined only to the local level. Its application on a wider scale is challenging. Therefore, providing sustainable water supply is challenging for the scientific community (Gutierrez et al., 2021). A remarkable achievement can only be achieved by involving local defluoridation methods, working with local people, and adopting practical and feasible science-based policy intervention measures over traditional methods.

## Conclusions

In this study, the statistical correlation of  $F^-$  with other hydrochemical parameters was investigated based on the extensive dataset published in the last two decades for deciphering the genesis, mobilization, and contamination of  $F^-$  in the groundwater of India. The study suggests that the alkalinity of the groundwater facilitates the mobilization of  $F^-$  from sediments/rocks. It was observed that the elevated  $F^-$  levels in the groundwater of India is mainly confined to the alluvial areas falling in the arid and semi-arid regions, followed by the hard rocks regions. This study also revealed that the high  $F^-$  levels correlates well with  $SiO_2$  and  $K^+$ , indicating  $F^-$  in groundwater is mainly derived from the weathering of fluorine-bearing silicates and, thus, possibly geogenic in nature. Further, this study highlighted the contaminated regions in India where safe water must be supplied for drinking for the inhabitants. Besides, defluoridation should be implemented at the grassroots level to treat high  $F^-$  groundwater for safe and clean drinking water and sustainable water supply. The policies intervention in contaminated areas in the developing world were often ineffective and had to be monitored more practically. To conclude, targeting uncontaminated aquifers for sustainable water supply and subsequent monitoring of drinking wells, and the willingness of the concerned authorities could be immensely helpful to mitigate the problem.

## Ethical approval

All authors agreed and approved the final version of this manuscript.

## Consent to participate

Not Applicable

## Consent to publish

Not Applicable

## Funding

This research did not receive any specific grant from funding agencies in the public, commercial, or not-for-profit sectors.

## Availability of data and materials

The data can be retrieved from the mentioned studies.

A preprint server prior to submission has not been submitted elsewhere.

## CRedit authorship contribution statement

**Shakir Ali:** Methodology, Investigation, Data curation, Formal analysis, Visualization, Writing – original draft, Writing – review & editing. **Shashank Shekhar:** Writing – review & editing. **Rakesh Kumar:** Writing – review & editing. **K. Brindha:** Writing – review & editing. **Peiyue Li:** Writing – review & editing.

## Declaration of Competing Interest

The author declares that there are no known competing financial interests or personal relationships that could have appeared to influence the work reported in this paper.

## Data availability

Data will be made available on request.

## Acknowledgments

It is duly acknowledged that the idea for the present work was developed during the Ph.D. of first author (SA). Therefore, present work is partial part of Ph.D. of SA. SA acknowledged UGC India for providing scholarship during his Ph.D. tenure. SA and SS acknowledged various facilities provided by University of Delhi. We also thank Editor and anonymous reviewers for their critical constructive comments on this manuscript.

## Supplementary materials

Supplementary material associated with this article can be found, in the online version, at [doi:10.1016/j.hazadv.2023.100352](https://doi.org/10.1016/j.hazadv.2023.100352).

## References

- Acharya, S., Sharma, S.K., Khandegar, V., 2018. Assessment of groundwater quality by water quality indices for irrigation and drinking in South West Delhi. India. Data in Brief 18, 2019–2028. <https://doi.org/10.1016/j.dib.2018.04.120>.
- Addison, M.J., Rivett, M.O., Phiri, P., Mleta, P., Mblame, E., Banda, M., Phiri, O., Lakudzala, W., Kalin, R.M., 2020. Identifying groundwater fluoride source in a weathered basement aquifer in central Malawi: human health and policy implications. Appl. Sci. 10, 5006. <https://doi.org/10.3390/app10145006>.
- Adimalla, N., Qian, H., 2022. Evaluation of non-carcinogenic causing health risks (NCHR) associated with exposure of fluoride and nitrate contaminated groundwater from a semi-arid region of south India. Environ Sci Pollut Res. <https://doi.org/10.1007/s11356-022-21771-0>.
- Adimalla, N., Li, P., Qian, H., 2018. Evaluation of groundwater contamination for fluoride and nitrate in semi-arid region of Nirmal Province, South India: a special emphasis on human health risk assessment (HHRA). Hum. Ecol. Risk Assess. 25, 1107–1124. <https://doi.org/10.1080/1080710807039.2018.1460579>.
- Adimalla, N., Li, P., Venkatayogi, S., 2018a. Hydrogeochemical evaluation of groundwater quality for drinking and irrigation purposes and integrated interpretation with water quality index studies. Environ. Process. 5, 363–383. <https://doi.org/10.1007/s40710-018-0297-4>.
- Agarwal, K.C., Gupta, S.K., Gupta, A.B., 1999. Development of new low cost defluoridation technology (KRASS). Water Science and Technology 40, 167–173. [https://doi.org/10.1016/S0273-1223\(99\)00440-0](https://doi.org/10.1016/S0273-1223(99)00440-0).
- Agarwal, M., Rai, K., Shrivastav, R., Dass, S., 2002. A study on fluoride sorption by montmorillonite and kaolinite. Water Air Soil Pollut. 141, 247–261. <https://doi.org/10.1023/A:1021328525215>.
- Agrawal, R., Margandan, K., Sharma, S., Qanungo, K., 2023. Employment generation opportunities in fluorosis affected rural areas in India: production of cement stabilized mud blocks using sludge from MgO-CaO-MgCl<sub>2</sub>-HCl and activated alumina based defluoridation filters. Mater. Today. <https://doi.org/10.1016/j.matpr.2021.04.371>.
- Ahada, C.P., Suthar, S., 2018. Assessing groundwater hydrochemistry of Malwa Punjab, India. Arab. J. Geosci. 11 (17), 1–15. <https://doi.org/10.1007/s12517-017-3355-8>.
- Ahmad, S., Singh, R., Arfin, T., Neeti, K., 2022. Fluoride contamination, consequences and removal techniques in water: a review. Environ. Sci. 1, 620–661. <https://doi.org/10.1039/D1VA00039J>.
- Ali, S., Thakur, S.K., Sarkar, A., Shekhar, S., 2016. Worldwide contamination of water by fluoride. Environ. Chem. Lett. 14, 291–315. <https://doi.org/10.1007/s10311-016-0563-5>.

- Alarcón-Herrera, M.T., Bundschuh, J., Nath, B., Nicolli, H.B., Gutierrez, M., Reyes-Gomez, V.M., Nunez, D., Martín-Dominguez, I.R., Sracek, O., 2013. Co-occurrence of arsenic and fluoride in groundwater of semi-arid regions in Latin America: Genesis, mobility and remediation. *Journal of Hazardous Materials* 262, 960–969. <https://doi.org/10.1016/j.jhazmat.2012.08.005>.
- Ali, S., 2017. Fluoride Contamination and Major Ions Chemistry of Groundwater in NCT Delhi, India. Department of Geology, University of Delhi. M.Phil. Thesis.
- Ali, S., Shekhar, S., Bhattacharya, P., Verma, G., Chandrasekhar, T., Chandrasekhar, A. K., 2018. Elevated fluoride in groundwater of Siwani Block, Western Haryana, India: a potential concern for sustainable water supplies for drinking and irrigation. *Groundwater Sustain. Dev.* 7, 410–420. <https://doi.org/10.1016/j.gsd.2018.05.008>.
- Ali, S., Fakhri, Y., Golbini, M., Thakur, S.K., Alinejad, A., Parseh, I., Shekhar, S., Bhattacharya, P., 2019. Concentration of fluoride in groundwater of India: a systematic review, meta-analysis and risk assessment. *Groundwater for Sustain. Dev.* 9 (100224), 1–10. <https://doi.org/10.1016/j.gsd.2019.100224>.
- Ali, S., Shekhar, S., Chandrasekhar, T., Yadav, A.K., Arora, N.K., Kashyap, C.A., Bhattacharya, P., Rai, S.P., Pande, P., Chandrasekhar, D., 2021. Influence of the water-sediment interaction on the major ions chemistry and fluoride contamination in groundwater of the Older Alluvial Plains of Delhi, India. *J. Earth Syst. Sci.* 130 (98), 1–16. <https://doi.org/10.1007/s12040-021-01585-3>.
- Ali, S., Shekhar, S., Chandrasekhar, T., 2022. Non-carcinogenic health risk assessment of fluoride in groundwater of the River Yamuna flood plain, Delhi, India. In: Hamid, R. P. (Ed.), *Computers in Earth and Environmental Sciences*. Elsevier, pp. 455–466. <https://doi.org/10.1016/B978-0-323-89861-4.00046-4>. ISBN: 978-0-323-89861-4.
- Ali, S., 2022. Process Based Insight Into the Groundwater Contamination and Fluoride Contamination in Parts of Delhi. Department of Geology, University of Delhi. Ph.D. Thesis.
- Andey, S., Labhasetwar, P.K., Khadse, G., Gwala, P., Pal, P., Deshmukh, P., 2013. Performance evaluation of solar power based electrolytic defluoridation plants in India. *Int. J. Water Resour. Arid Environ.* 2, 139–145.
- Anjaneyulu, L., Kumar, E.A., Sankannavar, R., Rao, K.K., 2012. Defluoridation of drinking water and rainwater harvesting using a solar still. *Ind. Eng. Chem. Res.* 51, 8040–8048. <https://doi.org/10.1021/ie201692q>.
- Apambire, W.B., Boyle, D.R., Michel, F.A., 1997. Geochemistry, genesis, and health implications of fluoriferous groundwaters in the upper regions of Ghana. *Environ. Geol.* 33, 13–24. <https://doi.org/10.1007/s002540050221>.
- Arulbalaji, P., Gurugnanam, B., 2017. Groundwater quality assessment using geospatial and statistical tools in Salem District, Tamil Nadu, India. *Appl. Water Sci.* 7, 2737–2751. <https://doi.org/10.1007/s13201-016-0501-5>.
- Arveti, N., Sarma, M.R.S., Aitkenhead-Peterson, J.A., Sunil, K., 2011. Fluoride incidence in groundwater: a case study from Talupula, Andhra Pradesh, India. *Environ. Monit. Assess.* 172, 427–443. <https://doi.org/10.1007/s10661-010-1345-3>.
- Ayoob, S., Gupta, A., Bhat, V.T., 2008. A conceptual overview on sustainable technologies for the defluoridation of drinking water. *Crit. Rev. Environ. Sci. Technol.* 38, 401–470. <https://doi.org/10.1080/10643380701413310>.
- Batabyal, A.K., 2017. Hydrogeochemical processes and contaminants enrichment with special emphasis on fluoride in groundwater of Birbhum district, West Bengal, India. *Environ. Earth Sci.* 76 (285), 1–23. <https://doi.org/10.1007/s12665-017-6584-y>.
- Bhuiyan, C., Ray, P.K.C., 2017. Groundwater quality zoning in the perspective of health hazards. *Water Resour. Manag.* 31, 251–267. <https://doi.org/10.1007/s11269-016-1522-4>.
- Brindha, K., Elango, L., 2011. Fluoride in groundwater: causes, implications and mitigation measures. In: Monroy, SD (Ed.), *Fluoride Properties, Applications and Environmental Management*, pp. 111–136.
- Brindha, K., Elango, L., 2013. Geochemistry of fluoride rich groundwater in a weathered granitic rock region, Southern India. *Water Qual. Exposure Health* 5, 127–138. <https://doi.org/10.1007/s12403-013-0096-0>.
- Brindha, K., Jagadeshan, G., Kalpana, L., Elango, L., 2016. Fluoride in weathered rock aquifers of southern India: Managed Aquifer Recharge for mitigation. *Environ. Sci. Pollut. Res., Int.* 23, 8302–8316. <https://doi.org/10.1007/s11356-016-6069-7>.
- Bulusu, K., Sunderasan, B., Nawlakhe, W., Kulkarni, D., Thergaonkar, V., 1979. Fluorides in water, defluoridation methods and their limitations. *J. Ind. Eng.* 60, 1–25.
- Cao, W., Zhang, Z., Guo, H., Fu, Y., Gao, Z., Nan, T., Ren, Y., Li, Z., 2023. Spatial distribution and controlling mechanisms of high fluoride groundwater in the coastal plain of Bohai Rim, North China. *Journal of Hydrology* 617, 128952. <https://doi.org/10.1016/j.jhydrol.2022.128952>.
- Chandrajith, R., Diyabalanage, S., Dissanayake, C.B., 2020. Geogenic fluoride and arsenic in groundwater of Sri Lanka and its implications to community health. *Groundwater Sustain. Dev.* 10 (100359), 1–11. <https://doi.org/10.1016/j.gsd.2020.100359>.
- Chatterjee, A., Roy, R.K., Ghosh, U.C., Pramanik, T., Kabi, S.P., Biswas, K., 2008. Fluoride in water in parts of Raniganj Coalfield, West Bengal. *Curr. Sci.* 94 (3), 309–311. <https://www.jstor.org/stable/24100337>.
- Chakraborty, M., Mukherjee, A., Ahmed, K.M., 2022. Regional-scale hydrogeochemical evolution across the arsenic-enriched transboundary aquifers of the Ganges River Delta system, India and Bangladesh. *Sci. Total Environ.* 823, 153490. <https://doi.org/10.1016/j.scitotenv.2022.153490>.
- Chicas, S.D., Omine, K., Prabhakaran, M., Sunitha, T.G., Sivasankar, V., 2022. High fluoride in groundwater and associated non-carcinogenic risks at Tiruvannamalai region in Tamil Nadu, India. *Ecotoxicol. Environ. Saf.* 233, 113335. <https://doi.org/10.1016/j.ecoenv.2022.113335>.
- Chowdhury, A., Adak, M.K., Mukherjee, A., Dhak, P., Khatun, J., Dhak, D., 2019. A critical review on geochemical and geological aspects of fluoride belts, fluorosis and natural materials and other sources for alternatives to fluoride exposure. *J. Hydrol. (Amst.)* 574, 333–359. <https://doi.org/10.1016/j.jhydrol.2019.04.033>.
- Dar, M.A., Sankar, K., Dar, I.A., 2011. Fluorine contamination in groundwater: a major challenge. *Environ. Monit. Assess.* 173, 955–968. <https://doi.org/10.1007/s10661-010-1437-0>.
- Das, B., Talukdar, J., Sarma, S., Gohain, B., Dutta, R.K., Das, H.B., Das, S.C., 2003. Fluoride and other inorganic constituents in groundwater of Guwahati, Assam, India. *Curr. Sci.* 85 (5), 657–661. <https://www.jstor.org/stable/24109107>.
- Datta, P.S., Tyagi, S.K., Mookerjee, P., Bhattacharya, S.K., Gupta, N., Bhatnagar, P.D., 1999. Groundwater NO<sub>3</sub> and F contamination processes in Pushkar Valley, Rajasthan as reflected from <sup>18</sup>O isotopic signature and <sup>3</sup>H recharge studies. *Environ. Monit. Assess.* 56 (2), 209–219. <https://doi.org/10.1023/A:1005903619718>.
- Datta, A.S., Chakraborty, A., De Dalal, S.S., Lahiri, S.C., 2014. Fluoride contamination of underground water in West Bengal, India. *Fluoride* 47 (3), 241–248.
- De, A., Mridha, D., Ray, I., Joardar, M., Das, A., Chowdhury, N.R., Roychowdhury, T., 2021. Fluoride exposure and probabilistic health risk assessment through different agricultural food crops from fluoride endemic bankura and Purulia Districts of West Bengal, India. *Front. Environ. Sci.* 9, 713148. <https://doi.org/10.3389/fenvs.2021.713148>.
- Dehbandi, R., Moore, F., Keshavarzi, B., 2018. Geochemical sources, hydrogeochemical behavior, and health risk assessment of fluoride in an endemic fluorosis area, central Iran. *Chemosphere*, 193, 763–776. <https://doi.org/10.1016/j.chemosphere.2017.11.021>.
- Devadas, D.J., Rao, N.S., Rao, B.T., Rao, K.S., Subrahmanyam, A., 2007. Hydrogeochemistry of the Sarada river basin, Visakhapatnam district, Andhra Pradesh, India. *In: Environ. Geol.*, 52, pp. 1331–1342. <https://doi.org/10.1007/s00254-006-0577-6>.
- Dong, S., Liu, B., Chen, Y., Ma, M., Liu, X., Wang, C., 2022. Hydro-geochemical control of high arsenic and fluoride groundwater in arid and semi-arid areas: a case study of Tumochuan Plain, China. *Chemosphere* 301, 134657. <https://doi.org/10.1016/j.chemosphere.2022.134657>.
- Duggal, V., Sharma, S., 2022. Fluoride contamination in drinking water and associated health risk assessment in the Malwa Belt of Punjab, India. *Environ. Adv.* 8, 100242. <https://doi.org/10.1016/j.envadv.2022.100242>.
- Duraiswami, R.A., Patankar, U., 2011. Occurrence of fluoride in the drinking water sources from Gad river basin, Maharashtra. *J. Geol. Soc. India* 77, 167–174. <https://doi.org/10.1007/s12594-011-0020-9>.
- Edmunds, W.M., Smedley, P.L., 2013. Fluoride in natural waters. In: Olle, S. (Ed.), *Essentials of Medical Geology*. Springer, Dordrecht, pp. 311–336. [https://doi.org/10.1007/978-94-007-4375-5\\_13](https://doi.org/10.1007/978-94-007-4375-5_13). ISBN: 978-94-007-4374-8.
- Eswar, P., Devaraj, C., 2011. Water defluoridation: field studies in India. *Indian J. Dental Adv.* 3, 526–533.
- Fuge, R., 2019. Fluorine in the environment, a review of its sources and geochemistry. *Appl. Geochem.* 100, 393–406. <https://doi.org/10.1016/j.apgeochem.2018.12.016>.
- Gaonkar, S.M., Karabasannavar, S.S., Patil, V.B.B., Kalashetty, M.B., Kalashetty, B.M., 2019. Studies on toxicity of fluoride and impact of endemic fluorosis from groundwater resources of bagalkot district, Karnataka – geospatial information system approach. *J. Geol. Soc. India* 93, 109–112. <https://doi.org/10.1007/s12594-019-1129-5>.
- Gawle, S., Pateria, K., Mishra, R.P., 2021. Physico-chemical analysis of groundwater during monsoon and winter season of Dindori district, India. *Groundwater Sustain. Dev.* 12 (100550), 1–9. <https://doi.org/10.1016/j.gsd.2021.100550>.
- Gill, T., Tiwari, S., Kumar, P.A., 2014. A review on feasibility of conventional fluoride removal techniques in urban areas. *Int. J. Environ. Res. Dev.* 4, 179–182.
- Gomez, M.L., Blarasin, M.T., Martínez, D.E., 2009. Arsenic and fluoride in a loess aquifer in the central area of Argentina. *Environ. Geol.* 57, 143–155. <https://doi.org/10.1007/s00254-008-1290-4>.
- Green, R., Lanphear, B., Hornung, R., Flora, D., Martinez-Mier, E.A., Neufeld, R., Ayotte, P., Muckle, G., Till, C., 2019. Association between maternal fluoride exposure during pregnancy and IQ scores in offspring in Canada. *JAMA pediatrics* 173 (10), 940–948. <https://doi.org/10.1001/jamapediatrics.2019.1729>.
- Guo, Q., Wang, Y., Ma, T., Ma, R., 2007. Geochemical processes controlling the elevated fluoride concentrations in groundwaters of the Taiyuan Basin, Northern China. *J. Geochem. Expl.* 93 (1), 1–12. <https://doi.org/10.1016/j.gexplo.2006.07.001>.
- Guo, H., Zhang, Y., Xing, L., Jia, Y., 2012. Spatial variation in arsenic and fluoride concentrations of shallow groundwater from the town of Shahai in the Hetao basin, Inner Mongolia. *Appl. Geochem.* 27, 2187–2196. <https://doi.org/10.1016/j.apgeochem.2012.01.016>.
- Gupta, S., Banerjee, S., Saha, R., Datta, J.K., Mondal, N., 2006. Fluoride geochemistry of groundwater in Nalhati-1 block of the Birbhum district, West Bengal, India. *Fluoride* 39 (4), 318–320.
- Gupta, R., Misra, A.K., 2018. Groundwater quality analysis of quaternary aquifers in Jhajjar District, Haryana, India: focus on groundwater fluoride and health implications. *Alexandria Eng. J.* 57 (1), 375–381. <https://doi.org/10.1016/j.aej.2016.08.031>.
- Gutierrez, L., Nocella, G., Ghiglieri, G., Idini, A., 2021. Willingness to pay for fluoride-free water in Tanzania: disentangling the importance of behavioural factors. *Int. J. Water Resour. Dev.* 1–20. <https://doi.org/10.1080/07900627.2021.1996341>.
- Handa, B.K., 1975. Geochemistry and genesis of Fluoride-Containing ground waters in India. *Groundwater*, 13, 275–281. <https://doi.org/10.1111/j.1745-6584.1975.tb03086.x>.
- Haritash, A.K., Kaushik, C.P., Kaushik, A., Kansal, A., Yadav, A.K., 2008. Suitability assessment of groundwater for drinking, irrigation and industrial use in some North Indian villages. *Environ. Monit. Assess.* 145, 397–406. <https://doi.org/10.1007/s10661-007-0048-x>.
- Hao, C., Sun, X., Xie, B., Hou, S., 2022. Increase in fluoride concentration in mine water in Shendong mining area, Northwest China: insights from isotopic and geochemical

- signatures. *Ecotoxicol. Environ. Saf.* 236, 113496 <https://doi.org/10.1016/j.ecoenv.2022.113496>.
- Ijumulana, J., Ligate, F., Irunde, R., Bhattacharya, P., Maity, J.P., Ahmad, A., Mtaló, F., 2021. Spatial uncertainties in fluoride levels and health risks in endemic fluorotic regions of northern Tanzania. *Groundwater Sustain. Dev.* 14, 100618 <https://doi.org/10.1016/j.gsd.2021.100618>.
- Isaac, A., Pruthivish, S., Haridas, R., Murthy, N., 2020. Impact of community defluoridation on a village endemic for hydric fluorosis in rural Karnataka, India. *Indian J. Commun. Med.* 45, 454.
- Iyer, K., Panchmal, G., Shenoy, R., 2013. Defluoridation techniques implemented by the government of Karnataka, India—the current situation. *Commun. Dent. Health* 30, 127–128.
- Jacks, G., Bhattacharya, P., Chaudhary, V., Singh, K.P., 2005. Controls on the genesis of some high-fluoride groundwaters in India. *Appl. Geochem.* 20 (2), 221–228. <https://doi.org/10.1016/j.apgeochem.2004.07.002>.
- Jagadeshan, G., Kalpana, L., Elango, L., 2015a. Hydrogeochemistry of high fluoride groundwater in hard rock aquifer in a part of Dharmapuri district, Tamil Nadu, India. *Geochem. Int.* 53, 554–564. <https://doi.org/10.1134/s0016702915060038>.
- Jagadeshan, G., Kalpana, L., Elango, L., 2015b. Major ion signatures for identification of geochemical reactions responsible for release of fluoride from geogenic sources to groundwater and associated risk in Vaniyar River basin, Dharmapuri district, Tamil Nadu, India. *Environ. Earth Sci.* 74, 2439–2450. <https://doi.org/10.1007/s12665-015-4250-9>.
- Jagtap, S., Yenkie, M.K., Labhsetwar, N., Rayalu, S., 2012. Fluoride in drinking water and defluoridation of water. *Chem. Rev.* 112 (4), 2454–2466. <https://doi.org/10.1021/cr2002855>.
- Jandu, A., Malik, A., Dhull, S.B., 2021. Fluoride and nitrate in groundwater of rural habitations of semi-arid region of northern Rajasthan, India: a hydrogeochemical, multivariate statistical, and human health risk assessment perspective. *Environ. Geochem. Health* 43, 3997–4026. <https://doi.org/10.1007/s10653-021-00882-6>.
- Jha, S.K., Nayak, A.K., Sharma, Y.K., 2010. Potential fluoride contamination in the drinking water of Marks Nagar, Unnao district, Uttar Pradesh, India. *Environ. Geochem. Health* 32, 217–226. <https://doi.org/10.1007/s10653-009-9277-y>.
- Jose, T.D., Vidyasagar, K., Jacob, B., 2014. Fluoride contamination of ground water and fluorosis among school students of Eruthempathy Panchayat, Palakkad District, Kerala, India. *Ecol. Environ. Conserv.* 20, 507–510.
- Joshi, A., Seth, G., 2011. Hydrochemical profile for assessing the groundwater quality of Sambhar lake City and its Adjoining area. *Environ. Monit. Assess.* 174, 547–554. <https://doi.org/10.1007/s10661-010-1477-5>.
- Kadam, A., Wagh, V., Umrikar, B., et al., 2020. An implication of boron and fluoride contamination and its exposure risk in groundwater resources in semi-arid region, Western India. *Environ. Dev. Sustain.* 22, 7033–7056. <https://doi.org/10.1007/s10668-019-00527-w>.
- Kalpana, L., Brindha, K., Elango, L., 2019. FIMAR: a new fluoride index to mitigate geogenic contamination by managed aquifer recharge. *Chemosphere* 220, 381–390. <https://doi.org/10.1016/j.chemosphere.2018.12.084>.
- Kantharaja, D.C., Lakkundi, T.K., Basavanna, M., Manjappa, S., 2012. Spatial analysis of fluoride concentration in groundwaters of Shivani watershed area, Karnataka state, South India, through geospatial information system. *Environ. Earth Sci.* 65, 67–76. <https://doi.org/10.1007/s12665-011-1065-1>.
- Karimzade, S., Aghaei, M., Mahvi, A., 2014. Investigation of intelligence quotient in 9–12-year-old children exposed to high-and low-drinking water fluoride in West Azerbaijan Province, Iran. *Fluoride* 47, 9–14.
- Karthikeyan, G., Pius, A., Alagumuthu, G., 2005. Fluoride adsorption studies of montmorillonite clay. *Indian J. Chem. Technol.* 12, 263–272.
- Karthikeyan, K., Nanthakumar, K., Velmurugan, P., Tamilarasi, S., Lakshmanaperumalsamy, P., 2010. Prevalence of certain inorganic constituents in groundwater samples of Erode district, Tamil Nadu, India, with special emphasis on fluoride, fluorosis and its remedial measures. *Environ. Monit. Assess.* 160, 141–155. <https://doi.org/10.1007/s10661-008-0664-0>.
- Karunanidhi, D., Aravinthasamy, P., Roy, P.D., Praveenkumar, R.M., Prasanth, K., Selvapraveen, S., Thowbeekrahman, A., Subramani, T., Srinivasamoorthy, K., 2020. Evaluation of non-carcinogenic risks due to fluoride and nitrate contaminations in a groundwater of an urban part (Coimbatore region) of south India. *Environ. Monit. Assess.* 192 (102), 1–16. <https://doi.org/10.1007/s10661-019-8059-y>.
- Kashyap, C.A., Ghosh, A., Singh, S., Ali, S., Singh, H.K., Chandrasekhar, T., Chandrasekhar, D., 2020. Distribution, genesis and geochemical modeling of fluoride in the water of tribal area of Bijapur district, Chhattisgarh, central India. *Groundwater Sustain. Dev.* 11 (100403), 1–11. <https://doi.org/10.1016/j.gsd.2020.100403>.
- Kashyap, S.J., Sankannavar, R., Madhu, G.M., 2021. Fluoride sources, toxicity and fluorosis management techniques—A brief review. *J. Hazardous Mater. Lett.* 2 (100033), 1–8. <https://doi.org/10.1016/j.hazl.2021.100033>.
- Kaur, L., Rishi, M.S., Siddiqui, A.U., 2020. Deterministic and probabilistic health risk assessment techniques to evaluate non-carcinogenic human health risk (NHHR) due to fluoride and nitrate in groundwater of Panipat, Haryana, India. In: *Environ. Contaminat.*, 259, 113711 <https://doi.org/10.1016/j.envpol.2019.113711>.
- Keesari, T., Kulkarni, U.P., Deodhar, A., Ramanjaneyulu, P.S., Sanjuktta, A.K., Kumar, U. S., 2014. Geochemical characterization of groundwater from an arid region in India. *Environ. Earth Sci.* 71, 4869–4888. <https://doi.org/10.1007/s12665-013-2878-x>.
- Keramati, H., Miri, A., Baghaei, M., Rahimizadeh, A., Ghorbani, R., Fakhri, Y., Bay, A., Moradi, M., Bahmani, Z., Ghaderpoori, M., Mousavi Khaneghah, A., 2019. Fluoride in Iranian drinking water resources: a systematic review, meta-analysis and non-carcinogenic risk assessment. *Biol. Trace Elem. Res.* 188, 261–273. <https://doi.org/10.1007/s12011-018-1418-7>.
- Khanna, P., 2015. Physico-chemical parameters of groundwater of Bishnah, district Jammu, Jammu and Kashmir, India. *Proc. Natl. Acad. Sci. India Sect. B: Biol. Sci.* 85, 121–130. <https://doi.org/10.1007/s40011-014-0345-4>.
- Khattak, J.A., Farooqi, A., Hussain, I., Kumar, A., Singh, C.K., Mailloux, B.J., Bostick, B., Ellis, T., van Geen, A., 2022. Groundwater fluoride across the Punjab plains of Pakistan and India: distribution and underlying mechanisms. *Sci. Total Environ.* 806, 151353 <https://doi.org/10.1016/j.scitotenv.2021.151353>.
- Kheradpisheh, Z., Mirzaei, M., Mahvi, A.H., Mokhtari, M., Azizi, R., Fallahzadeh, H., Ehrampoush, M.H., 2018. Impact of drinking water fluoride on human thyroid hormones: a case-control study. *Sci. Rep.* 8, 1–7. <https://doi.org/10.1038/s41598-018-20696-4>.
- Kimambo, V., Bhattacharya, P., Mtaló, F., Mtamba, J., Ahmad, A., 2019. Fluoride occurrence in groundwater systems at global scale and status of defluoridation—state of the art. *Groundwater Sustain. Dev.* 9, 100223 <https://doi.org/10.1016/j.gsd.2019.100223>.
- Kodate, J.K., Pophare, A.M., Gajbhiye, R., Meshram, Y., 2007. Hydrochemistry of groundwater from Bhadravati Tehsil, Chandrapur District, Maharashtra with reference to fluoride contamination. *Gondwana Geol. Mag.* 11, 113–118.
- Kumar, P.S., Jegathambal, P., Nair, S., James, E.J., 2015. Temperature and pH dependent geochemical modeling of fluoride mobilization in the groundwater of a crystalline aquifer in southern India. *J. Geochem. Explor.* 156, 1–9. <https://doi.org/10.1016/j.gexplo.2015.04.008>.
- Kumar, P.S., 2017. Grounding a natural background level for fluoride in a potentially contaminated crystalline aquifer in south India. *Environ. Sci. Contaminat. Res.* 24, 26623–26633. <https://doi.org/10.1007/s11356-017-0239-0>.
- Kumar, S., Sarkar, A., Ali, S., Shekhar, S., 2018. Groundwater system of national capital region Delhi, India. In: Mukherjee, A. (Ed.), *Groundwater of South Asia*. Springer Hydrogeology. Springer, Singapore, pp. 131–152. [https://doi.org/10.1007/978-981-10-3889-1\\_9](https://doi.org/10.1007/978-981-10-3889-1_9). ISBN: 978-981-10-3888-4.
- Kumar, S., Singh, R., Venkatesh, A.S., Udayabhanu, G., Sahoo, P.R., 2019. Medical Geological assessment of fluoride contaminated groundwater in parts of Indo-Gangetic Alluvial plains. *Sci. Rep.* 9 (16243), 1–16. <https://doi.org/10.1038/s41598-019-52812-3>.
- Kumar, R., Ali, S., Sandun Sandanayake, S., Islam, M.A., Ijumulana, J., Maity, J.P., Vithanage, M., Armienta, M.A., Sharma, P., Hamisi, R., Kimambo, V., Bhattacharya, P., 2023a. Fluoride as a global groundwater contaminant. In: Naidu, R. (Ed.), *Inorganic Contaminants and Radionuclides*. Elsevier, The Netherlands. In Press.
- Kumar, R., Sharma, P., Rose, P.K., Sahoo, P.K., Bhattacharya, P., Pandey, A., Kumar, M., 2023b. Co-transport and deposition of fluoride using rice husk-derived biochar in saturated porous media: effect of solution chemistry and surface properties. *Environ. Technol. Innovat.* 30, 103056 <https://doi.org/10.1016/j.eti.2023.103056>.
- Kumari, P., Misra, A.K., 2023. Potential health risk assessment and distribution of fluoride in groundwater of Munger, Bihar India: a case study. *Hum. Ecol. Risk Assess.* 1–20.
- Kundu, N., Panigrahi, M., Tripathy, S., Munshi, S., Powell, M., Hart, B., 2001. Geochemical appraisal of fluoride contamination of groundwater in the Nayagarh District of Orissa, India. *Environmental Geology* 41, 451–460. <https://doi.org/10.1007/s002540100414>.
- Kut, K.M.K., Sarawat, A., Srivastava, A., Pittman Jr, C.U., Mohan, D., 2016. A review of fluoride in African groundwater and local remediation methods. In: *Groundwater Sustain. Dev.*, 2–3, pp. 190–212. <https://doi.org/10.1016/j.gsd.2016.09.001>.
- Li, P., He, X., Li, Y., et al., 2019. Occurrence and health implication of fluoride in groundwater of loess aquifer in the Chinese Loess Plateau: a case study of Tongchuan, Northwest China. *Expo Health* 11, 95–107. <https://doi.org/10.1007/s12403-018-0278-x>.
- Li, P., Karunanidhi, D., Subramani, T., et al., 2021. Sources and consequences of groundwater contamination. *Arch. Environ. Contam. Toxicol.* 80, 1–10. <https://doi.org/10.1007/s00244-020-00805-z>.
- Ling, Y., Podgorski, J., Sadiq, M., Rasheed, H., Eqani, S.A.M.A.S., Berg, M., 2022. Monitoring and prediction of high fluoride concentrations in groundwater in Pakistan. *Sci. Total Environ.* 839, 156058 <https://doi.org/10.1016/j.scitotenv.2022.156058>.
- Lunge, S., Biniwale, R., Labhsetwar, N., Rayalu, S.S., 2011. User perception study for performance evaluation of domestic defluoridation techniques for its application in rural areas. *J. Hazard. Mater.* 191, 325–332. <https://doi.org/10.1016/j.jhazmat.2011.04.088>.
- Madhure, P., Malpe, D.B., 2007. Fluoride contamination of groundwaters in rural parts of Yavatmal District, Maharashtra—Causes and remedies. *Gondwana Geol. Mag.* 11, 127–135.
- Madhure, P., Sirsikar, D.Y., Tiwari, A.N., Ranjan, B., Malpe, D.B., 2007. Occurrence of fluoride in the groundwaters of Pandharkawada area, Yavatmal district, Maharashtra, India. *Curr. Sci.* 92 (5), 675–679. <https://www.jstor.org/stable/24097859>.
- Malik, A., Kavita, 2022. Fluoride contamination in groundwater of intensively cropped Upper Yamuna alluvial basin of India: a hydrogeochemical, human health risk assessment, and multivariate statistical perspective. *Arab. J. Geosci.* 15, 1473. <https://doi.org/10.1007/s12517-022-10728-9>.
- Mamatha, P., Rao, S.M., 2010. Geochemistry of fluoride rich groundwater in Kolar and Tumkur Districts of Karnataka. *Environ. Earth Sci.* 61, 131–142. <https://doi.org/10.1007/s12665-009-0331-y>.
- Martins, V.T.D.S., Pino, D.S., Bertolo, R., Hirata, R., Babinski, M., Pacheco, D.F., Rios, A. P., 2018. Who to blame for groundwater fluoride anomaly in São Paulo, Brazil? Hydrogeochemistry and isotopic evidence. *Applied Geochemistry* 90, 25–38. <https://doi.org/10.1016/j.apgeochem.2017.12.020>.

- McMahon, P.B., Brown, C.J., Johnson, T.D., Belitz, K., Lindsey, B.D., 2020. Fluoride occurrence in United States groundwater. *Sci. Total Environ.* 732 (139217), 1–15. <https://doi.org/10.1016/j.scitotenv.2020.139217>.
- Meenakshi, Garg, V.K., Malik, A., 2004. Groundwater quality in some villages of Haryana, India: focus on fluoride and fluorosis. *J. Hazard. Mater.* 106 (1), 85–97. <https://doi.org/10.1016/j.jhazmat.2003.09.007>.
- Misra, A.K., Mishra, A., 2007. Study of Quaternary aquifers in Ganga Plain, India: focus on groundwater salinity, fluoride and fluorosis. *J. Hazard. Mater.* 144 (1–2), 438–448. <https://doi.org/10.1016/j.jhazmat.2006.10.057>.
- Mohapatra, M., Anand, S., Mishra, B.K., Giles, D.E., Singh, P., 2009. Review of fluoride removal from drinking water. *J. Environ. Manage.* 91 (1), 67–77. <https://doi.org/10.1016/j.jenvman.2009.08.015>.
- Mohammadi, A.A., Yousefi, M., Yaseri, M., Jalilzadeh, M., Mahvi, A.H., 2017. Skeletal fluorosis in relation to drinking water in rural areas of West Azerbaijan. *Iran. Scientific Reports* 7, 1–7.
- Mondal, N.C., Prasad, R.K., Saxena, V.K., Singh, Y., Singh, V.S., 2009. Appraisal of highly fluoride zones in groundwater of Kurmapalli watershed, Nalgonda district, Andhra Pradesh (India). *Environ. Earth Sci.* 59, 63–73. <https://doi.org/10.1007/s12665-009-0004-x>.
- Mondal, D., Gupta, S., Reddy, D.V., Nagabhushanam, P., 2014. Geochemical controls on fluoride concentrations in groundwater from alluvial aquifers of the Birbhun district, West Bengal, India. *J. Geochem. Explor.* 145, 190–206. <https://doi.org/10.1016/j.gexplo.2014.06.005>.
- More, S., Dhakate, R., Ratnal, G.V., Machender, G., 2021. Hydrogeochemistry and health risk assessment of groundwater and surface water in fluoride affected area of yadadri-bhuvanagiri district, Telangana State, India. *Environ. Earth Sci.* 80, 1–18. <https://doi.org/10.1007/s12665-021-09544-3>.
- Mridha, D., Priyadarshini, P., Bhaskar, K., Gaurav, A., De, A., Das, A., Joardar, M., Chowdhury, N.R., Roychowdhury, T., 2021. Fluoride exposure and its potential health risk assessment in drinking water and staple food in the population from fluoride endemic regions of Bihar, India. *Groundwater Sustain. Dev.* 13, 100558. <https://doi.org/10.1016/j.gsd.2021.100558>.
- Mukherjee, I., Singh, U.K., 2018. Groundwater fluoride contamination, probable release, and containment mechanisms: a review on Indian context. *Environ. Geochem. Health* 40, 2259–2301. <https://doi.org/10.1007/s10653-018-0096-x>.
- Mukherjee, I., Singh, U.K., Patra, P.K., 2019. Exploring a multi-exposure-pathway approach to assess human health risk associated with groundwater fluoride exposure in the semi-arid region of east India. *Chemosphere* 233, 164–173. <https://doi.org/10.1016/j.chemosphere.2019.05.278>.
- Narsimha, A., Sudarshan, V., 2017. Contamination of fluoride in groundwater and its effect on human health: a case study in hard rock aquifers of Siddipet, Telangana State, India. *Appl. Water Sci.* 7, 2501–2512. <https://doi.org/10.1007/s13201-016-0441-0>.
- Nawlakhe, W., Kulkarni, D., Pathak, B., Bulusu, K., 1975. Defluoridation of water by Nalgonda technique. *Indian J. Environ. Health* 17, 26–65.
- Nawlakhe, W., Paramasivam, R., 1993. Defluoridation of potable water by Nalgonda technique. *Curr. Sci.* 65, 743–748.
- Nawlakhe, W., Rao, A., 1990. Evaluation of defluoridation plant at Tartatur. *J. Indian Water Works Assoc.* 13, 287–290.
- Neeti, K., Singh, R., Ahmad, S., 2023. Fluoride detection in groundwater and its correlation with various physicochemical parameters in Gaya Town, Bihar, India. In: Al Khaddar, R., Singh, S.K., Kaushika, N.D., Tomar, R.K., Jain, S.K. (eds) *Recent Developments in Energy and Environmental Engineering*. TRACE 2022. Lecture Notes in Civil Engineering, vol 333. Springer, Singapore. doi:10.1007/978-981-99-1388-6\_17.
- Nizam, S., Acharya, T., Dutta, S., Sen, I.S., 2022a. Occurrence, sources, and spatial distribution of fluoride in the Ganga alluvial aquifer, India. *Environ. Geochem. Health*. <https://doi.org/10.1007/s10653-022-01319-4>.
- Nizam, S., Virk, H.S., Sen, I.S., 2022b. High levels of fluoride in groundwater from Northern parts of Indo-Gangetic plains reveals detrimental fluorosis health risks. *Environmental Advances* 8. <https://doi.org/10.1016/j.envadv.2022.100200>.
- Nordstrom, D.K., Smedley P.L. (2022). *Fluoride in groundwater*. ISBN: 978-1-77470-019-8. p.130. freely available at <https://gw-project.org/>.
- Olaka, L.A., Wilke, F.D., Olago, D.O., Odada, E.O., Mulch, A., Musloff, A., 2016. Groundwater fluoride enrichment in an active rift setting: central Kenya Rift case study. *Sci. Total Environ.* 545–546, 641–653. <https://doi.org/10.1016/j.scitotenv.2015.11.161>.
- Ozsvath, D.L., 2006. Fluoride concentrations in a crystalline bedrock aquifer Marathon County, Wisconsin. *Environ. Geol.* 50, 132–138. <https://doi.org/10.1007/s00254-006-0192-6>.
- Pandith, M., Kaplay, R.D., Potdar, S.S., Sangnor, H., Rao, A.D., 2017. Impact of urbanization coupled with drought situations on groundwater quality in shallow (basalt) and deeper (granite) aquifers with special reference to fluoride in Nanded-Waghala Municipal Corporation, Nanded District, Maharashtra (India). *Environ. Monit. Assess.* 189 (428), 1–14. <https://doi.org/10.1007/s10661-017-6098-9>.
- Podgorski, J., Berg, M., 2022. Global analysis and prediction of fluoride in groundwater. *Nat. Commun.* 13 (4232), 1–9. <https://doi.org/10.1038/s41467-022-31940-x>.
- Podgorski, J.E., Labhasetwar, P., Saha, D., Berg, M., 2018. Prediction modeling and mapping of groundwater fluoride contamination throughout India. *Environ. Sci. Technol.* 52 (17), 9889–9898. <https://doi.org/10.1021/acs.est.8b01679>.
- Prasad, Y.S., Rao, B.V., 2018. Monitoring and assessment of groundwater quality in a khondalitic terrain, Andhra Pradesh, India. *Environ. Monit. Assess.* 190, 1–23. <https://doi.org/10.1007/s10661-018-6757-5>.
- Rahman, M.M., Bodrud-Doza, M., Siddiqua, M.T., Zahid, A., Islam, A.R.M.T., 2020. Spatiotemporal distribution of fluoride in drinking water and associated probabilistic human health risk appraisal in the coastal region, Bangladesh. *Sci. Total Environ.* 724, 138316. <https://doi.org/10.1016/j.scitotenv.2020.138316>.
- Raj, D., Shaji, E., 2017. Fluoride contamination in groundwater resources of Alleppey, southern India. *Geosci. Front.* 8 (1), 117–124. <https://doi.org/10.1016/j.gsf.2016.01.002>.
- Raju, N.J., Dey, S., Das, K., 2009a. Fluoride contamination in groundwaters of Sonbhadra district, Uttar Pradesh, India. *Curr. Sci.* 96 (7), 979–985.
- Raju, N.J., Ram, P., Dey, S., 2009b. Groundwater quality in the lower Varuna river basin, Varanasi district, Uttar Pradesh. *J. Geol. Soc. India* 73, 178–192. <https://doi.org/10.1007/s12594-009-0074-0>.
- Raju, N.J., 2017. Prevalence of fluorosis in the fluoride enriched groundwater in semi-arid parts of eastern India: geochemistry and health implications. *Quat. Int.* 443 (B), 265–278. <https://doi.org/10.1016/j.quaint.2016.05.028>.
- Ramanarayanan, S., Kuruvilla, S., Methar, S., Latti, P., 2022. Defluoridation potential of indigenous thirst-quenching herbal products commonly used in Kerala, India. *Environ. Health Eng. Manag. J.* 9, 419–424. <https://doi.org/10.34172/EHEM.2022.45>.
- Ramachandran, M., Sabarathinam, C., Ulaganthan, K., Paluchamy, A., Sivaji, M., Hameed, S., 2012. Mapping of fluoride ions in groundwater of Dindigul district, Tamilnadu, India—Using GIS technique. *Arab. J. Geosci.* 5 (3), 433–439. <https://doi.org/10.1007/s12517-010-0216-0>.
- Rango, T., Kravchenko, J., Atlaw, B., McCornick, P.G., Jeuland, M., Merola, B., Vengosh, A., 2012. Groundwater quality and its health impact: an assessment of dental fluorosis in rural inhabitants of the Main Ethiopian Rift. *Environ. Int.* 43, 37–47. <https://doi.org/10.1016/j.envint.2012.03.002>.
- Rao, S.M., Mamatha, P., 2004. Water quality in sustainable water management. *Curr. Sci.* 87, 942–947.
- Rao, N.S., 2008. Factors controlling the salinity in groundwater in parts of Guntur district, Andhra Pradesh, India. *Environ. Monit. Assess.* 138, 327–341. <https://doi.org/10.1007/s10661-007-9801-4>.
- Rao, N.S., 2009. Fluoride in groundwater, Varaha River Basin, Visakhapatnam District, Andhra Pradesh, India. *Environ. Monit. Assess.* 152, 47–60. <https://doi.org/10.1007/s10661-008-0295-5>.
- Rao, N.S., Rao, P.S., Reddy, G.V., Nagamani, M., Vidyasagar, G., Satyanarayana, N.L.V., 2012. Chemical characteristics of groundwater and assessment of groundwater quality in Varaha River Basin, Visakhapatnam District, Andhra Pradesh, India. *Environ. Monit. Assess.* 184, 5189–5214. <https://doi.org/10.1007/s10661-011-2333-y>.
- Rao, N.S., 2017. Controlling factors of fluoride in groundwater in a part of South India. *Arab. J. Geosci.* 10 (524), 1–15. <https://doi.org/10.1007/s12517-017-3291-7>.
- Rao, N.S., Rao, P.S., Dinakar, A., Rao, P.V., Marghade, D., 2017. Fluoride occurrence in the groundwater in a coastal region of Andhra Pradesh, India. *Appl. Water Sci.* 7, 1467–1478. <https://doi.org/10.1007/s13201-015-0338-3>.
- Reddy, D.V., Nagabhushanam, P., Sukhija, B.S., Reddy, A.G.S., Smedley, P.L., 2010. Fluoride dynamics in the granitic aquifer of the Wailapally watershed, Nalgonda District, India. *Chem. Geol.* 269 (3–4), 278–289. <https://doi.org/10.1016/j.chemgeo.2009.10.003>.
- Saha, D., Shekhar, S., Ali, S., Vittala, S.S., Raju, N.J., 2016. Recent hydrogeological research in India. *Proc. Indian Natl. Sci. Acad.* 82 (3), 787–803. <https://doi.org/10.16943/ptinsa/2016/48485>.
- Saha, D., Shekhar, S., Ali, S., Elango, L., Vittala, S., 2020. Recent Scientific Perspectives on the Indian Hydrogeology. *Proc. Indian Natl. Sci. Acad.* 86 (1), 459–478. <https://doi.org/10.16943/ptinsa/2020/49790>.
- Sahu, B.L., Banjare, G.R., Ramteke, S., Patel, K.S., Matini, L., 2017. Fluoride contamination of groundwater and toxicities in Dongargaon block, Chhattisgarh, India. *Exposur. Health* 9, 143–156. <https://doi.org/10.1007/s12403-016-0229-3>.
- Salve, P.R., Maurya, A., Kumbhare, P.S., Ramteke, D.S., Wate, S.R., 2008. Assessment of groundwater quality with respect to fluoride. *Bull. Environ. Contam. Toxicol.* 81, 289–293. <https://doi.org/10.1007/s00128-008-9466-x>.
- Sarkar, S., Mukherjee, A., Chakraborty, M., Quamar, M.T., Duttagupta, S., Bhattacharya, A., 2023. Prediction of elevated groundwater fluoride across India using multi-model approach: insights on the influence of geologic and environmental factors. *Environmental Science and Pollution Research* 30 (11), 31998–32013. <https://doi.org/10.1007/s11356-022-24328-3>.
- Saxena, V., Ahmed, S., 2003. Inferring the chemical parameters for the dissolution of fluoride in groundwater. *Environ. Geol.* 43, 731–736. <https://doi.org/10.1007/s00254-002-0672-2>.
- Senthilkumar, M., Mohapatra, B., Gnanasundar, D., Gupta, S., 2021. Identifying fluoride endemic areas and exposure pathways for assessment of non-carcinogenic human health risk associated with groundwater fluoride for Gujarat state, India. *Environ. Sci. Pollut. Res.* 28 (36), 50188–50203. <https://doi.org/10.1007/s11356-021-14156-2>.
- Shaji, E., Viju, J., Thambi, D.S., 2007. High fluoride in groundwater of Palghat District, Kerala. *Curr. Sci.* 92 (2), 240–245. <https://www.jstor.org/stable/24096696>.
- Shaji, E., Gómez-Alday, J.J., Hussein, S., Deepu, T.R., Anilkumar, Y., 2018. Salinization and deterioration of groundwater quality by nitrate and fluoride in the Chittur block, Palakkad, Kerala. *J. Geol. Soc. India* 92, 337–345. <https://doi.org/10.1007/s12594-018-1017-4>.
- Shankar, B.S., Balasubramanya, N., Reddy, M.M., 2008. Impact of industrialization on groundwater quality—a case study of Peenya industrial area, Bangalore, India. *Environ. Monit. Assess.* 142, 263–268. <https://doi.org/10.1007/s10661-007-9923-8>.
- Sharma, P., Sarma, H.P., Mahanta, C., 2012. Evaluation of groundwater quality with emphasis on fluoride concentration in Nalbari district, Assam, Northeast India. *Environ. Earth Sci.* 65, 2147–2159. <https://doi.org/10.1007/s12665-011-1195-5>.

- Subba Rao, N., 2003. Groundwater quality: focus on fluoride concentration in rural parts of Guntur district, Andhra Pradesh, India. *Hydrol. Sci. J.* 48, 835–847. <https://doi.org/10.1623/hysj.48.5.835.51449>.
- Subba Rao, N., 2017. Controlling factors of fluoride in groundwater in a part of South India. *Arab. J. Geosci.* 10, 524. <https://doi.org/10.1007/s12517-017-3291-7>.
- Singh, C.K., Kumari, R., Singh, N., Mallick, J., Mukherjee, S., 2013. Fluoride enrichment in aquifers of the Thar Desert: controlling factors and its geochemical modelling. *Hydrol. Process.* 27 (17), 2462–2474. <https://doi.org/10.1002/hyp.9247>.
- Singh, C.K., Mukherjee, S., 2015. Aqueous geochemistry of fluoride enriched groundwater in arid part of Western India. *Environ. Sci. Pollut. Res.* 22, 2668–2678. <https://doi.org/10.1007/s11356-014-3504-5>.
- Srimurali, M., Karthikeyan, J., 2008. Activated alumina: defluoridation of water and household application—a study. In: *Twelfth International Water Technology Conference*. 12. Citeseer, pp. 153–165.
- Sudarshan, V., Narsimha, A., Das, S.V.G. 2018. Geochemical behavior of fluoride-rich groundwater in Markapur, Andhra Pradesh, South India. *Data in Brief*, 18: pp. 87–95. doi:10.1016/j.dib.2018.02.084.
- Sujatha, D., 2003. Fluoride levels in the groundwater of the south-eastern part of Ranga Reddy district, Andhra Pradesh, India. *Environ. Geol.* 44, 587–591. <https://doi.org/10.1007/s00254-003-0795-0>.
- Sujatha, D., Reddy, B.R., 2003. Quality characterization of groundwater in the south-eastern part of the Ranga Reddy district, Andhra Pradesh, India. *Environ. Geol.* 44, 579–586. <https://doi.org/10.1007/s00254-003-0794-1>.
- Sulaiman, A., Gupta, A.K., Basheer, A.B., 2009. A fixed bed sorption system for defluoridation of ground water. *J. Urban Environ. Eng.* 3, 17–22. <https://www.jstor.org/stable/26203329>.
- Sunkari, E.D., Adams, S.J., Okyere, M.B., Bhattacharya, P., 2022. Groundwater fluoride contamination in Ghana and the associated human health risks: any sustainable mitigation measures to curtail the long term hazards? *Groundwater Sustain. Dev.* 16, 100715. <https://doi.org/10.1016/j.gsd.2021.100715>.
- Thabrez, M., Parimalarenganayaki, S., Brindha, K., Elango, L., 2023. Fuzzy logic-based health risk assessment of fluoride in groundwater used as drinking source in Sira region, Tumkur, India. *Environ. Geochem. Health* 45 (6), 3947–3969. <https://doi.org/10.1007/s10653-022-01474-8>.
- Thivya, C., Chidambaram, S., Rao, M.S., Thilagavathi, R., Prasanna, M.V., Manikandan, S.J.A.W.S., 2017. Assessment of fluoride contaminations in groundwater of hard rock aquifers in Madurai district, Tamil Nadu (India). *Appl. Water Sci.* 7, 1011–1023. <https://doi.org/10.1007/s13201-015-0312-0>.
- Thapa, R., Gupta, S., Kaur, H., 2017. Delineation of potential fluoride contamination zones in Birbhum, West Bengal, India, using remote sensing and GIS techniques. *Arab. J. Geosci.* 10, 527. <https://doi.org/10.1007/s12517-017-3328-y>.
- Tirumalesh, K., Shivanna, K., Jalihal, A.A., 2007. Isotope hydrochemical approach to understand fluoride release into groundwaters of Ilkal area, Bagalkot District, Karnataka, India. *Hydrogeol. J.* 15, 589–598. <https://doi.org/10.1007/s10077/s10040-006-0107-3>.
- Tiwari, K.K., Krishan, G., Prasad, G., Mondal, N.C., Bhardwaj, V., 2020. Evaluation of fluoride contamination in groundwater in a semi-arid region, Dausa District, Rajasthan, India. *Groundwater Sustain. Dev.* 11, 1–10. <https://doi.org/10.1016/j.gsd.2020.100465>, 100465.
- Ugran, V., Desai, N.N., Chakraborti, D., Masali, K.A., Mantur, P., Kulkarni, S., Deshmukh, N., Chadchan, K.S., Das, S.N., Tanksali, A.S., Arwika, A.S., 2017. Groundwater fluoride contamination and its possible health implications in Indi taluk of Vijayapura District (Karnataka State), India. *Environ. Geochem. Health* 39, 1017–1029. <https://doi.org/10.1007/s10653-016-9869-2>.
- Usham, A.L., Dubey, C.S., Shukla, D.P., Mishra, B.K., Bhartiya, G.P., 2018. Sources of fluoride contamination in Singrauli with special reference to Rihand reservoir and its surrounding. *J. Geol. Soc. India* 91, 441–448. <https://doi.org/10.1007/s12594-018-0877-y>.
- Vikas, C., Kushwaha, R.K., Pandit, M.K., 2009. Hydrochemical status of groundwater in district Ajmer (NW India) with reference to fluoride distribution. *J. Geol. Soc. India* 73, 773–784. <https://doi.org/10.1007/s12594-009-0062-4>.
- Viswanathan, G., Jaswanth, A., Gopalakrishnan, S., Aditya, G., 2009. Determining the optimal fluoride concentration in drinking water for fluoride endemic regions in South India. *Sci. Total Environ.* 407 (20), 5298–5307. <https://doi.org/10.1016/j.scitotenv.2009.06.028>.
- Vithanage, M., Bhattacharya, P., 2015. Fluoride in the environment: sources, distribution and defluoridation. *Environ. Chem. Lett.* 13, 131–147. <https://doi.org/10.1007/s10311-015-0496-4>.
- WHO, 2011. *Guidelines for Drinking-Water Quality*, Forth edition. World Health Organization, Geneva (Available at: [www.who.int](http://www.who.int)). Assessed on 30 July 2019.
- Wu, J., Li, P., Qian, H., 2015. Hydrochemical characterization of drinking groundwater with special reference to fluoride in an arid area of China and the control of aquifer leakage on its concentrations. *Environ. Earth Sci.* 73, 8575–8588. <https://doi.org/10.1007/s12665-015-4018-2>.
- Yadav, K.K., Kumar, S., Pham, Q.B., Gupta, N., Rezaia, S., Kamyab, H., Yadav, S., Vymazal, J., Kumar, V., Tri, D.Q., Talaiekhazani, A., Prasad, S., Reece, L.M., Singh, N., Maurya, P.K., Cho, J., 2019a. Fluoride contamination, health problems and remediation methods in Asian groundwater: a comprehensive review. *Ecotoxicol. Environ. Saf.* 182, 1–23. <https://doi.org/10.1016/j.ecoenv.2019.06.045>, 109362.
- Yadav, S., Bansal, S.K., Yadav, S., et al., 2019b. Fluoride distribution in underground water of district Mahendergarh, Haryana, India. *Appl. Water Sci.* 9, 62. <https://doi.org/10.1007/s13201-019-0935-7>.
- Yadav, K., Raphi, M., Jagadevan, S., 2021. Geochemical appraisal of fluoride contaminated groundwater in the vicinity of a coal mining region: spatial variability and health risk assessment. *Geochemistry* 81 (1), 1–12. <https://doi.org/10.1016/j.chemer.2020.125684>, 125684.
- Bureau of Indian Standards (2012) Indian standard specification for drinking water (IS: 10500). BIS, Manak Bhawan, New Delhi. (Available at: <https://law.resource.org/pub/in/bis/S06/is.10500.2012.pdf>).