

Clemson University

TigerPrints

Presentations

University Libraries

11-2023

Collection Assessment: Taming the Beast

Renna Redd

Follow this and additional works at: https://tigerprints.clemson.edu/lib_pres



Part of the [Collection Development and Management Commons](#)



**Collection
Assessment:
Taming the
Beast**

Renna Redd
Clemson University
Libraries



Clemson University

- ☰ Land grant university located in northwest South Carolina established in 1889
- ☰ Combined grad and undergrad enrollment is 28,500
- ☰ R1 designation in 2016
- ☰ 800,000+ monographs
- ☰ 1 million+ eBooks, journals, and streaming media titles
- ☰ 4 libraries on campus
- ☰ 2 libraries off campus (Charleston and Greenville)
- ☰ 1 off-site storage facility



Collection Assessment Landscape


- ③ Assessment projects on an ad-hoc basis
- ③ Liaison librarians perform collection development
- ③ Collections-related work spread across multiple areas; no single person or team in charge of coordinating
- ③ Reorg in 2022 created a Collections and Discovery Division, a Head of Collections and Acquisitions, and an Interim Collection Development and Management Coordinator (25% position)



What Do We Want to Accomplish?

- ☰ Ensure our collections are meeting campus needs
- ☰ Determine what we need to support new programs
- ☰ Prep the collection for shared print initiatives
- ☰ Prep for library renovation

While...

- ☰ Maximizing time of liaisons
 - ☰ Leveraging resources from different areas
- 

3: The Magic Number?

Liaison Librarians

3 teams of four
liaison librarians

- Humanities
- Social Sciences
- Science



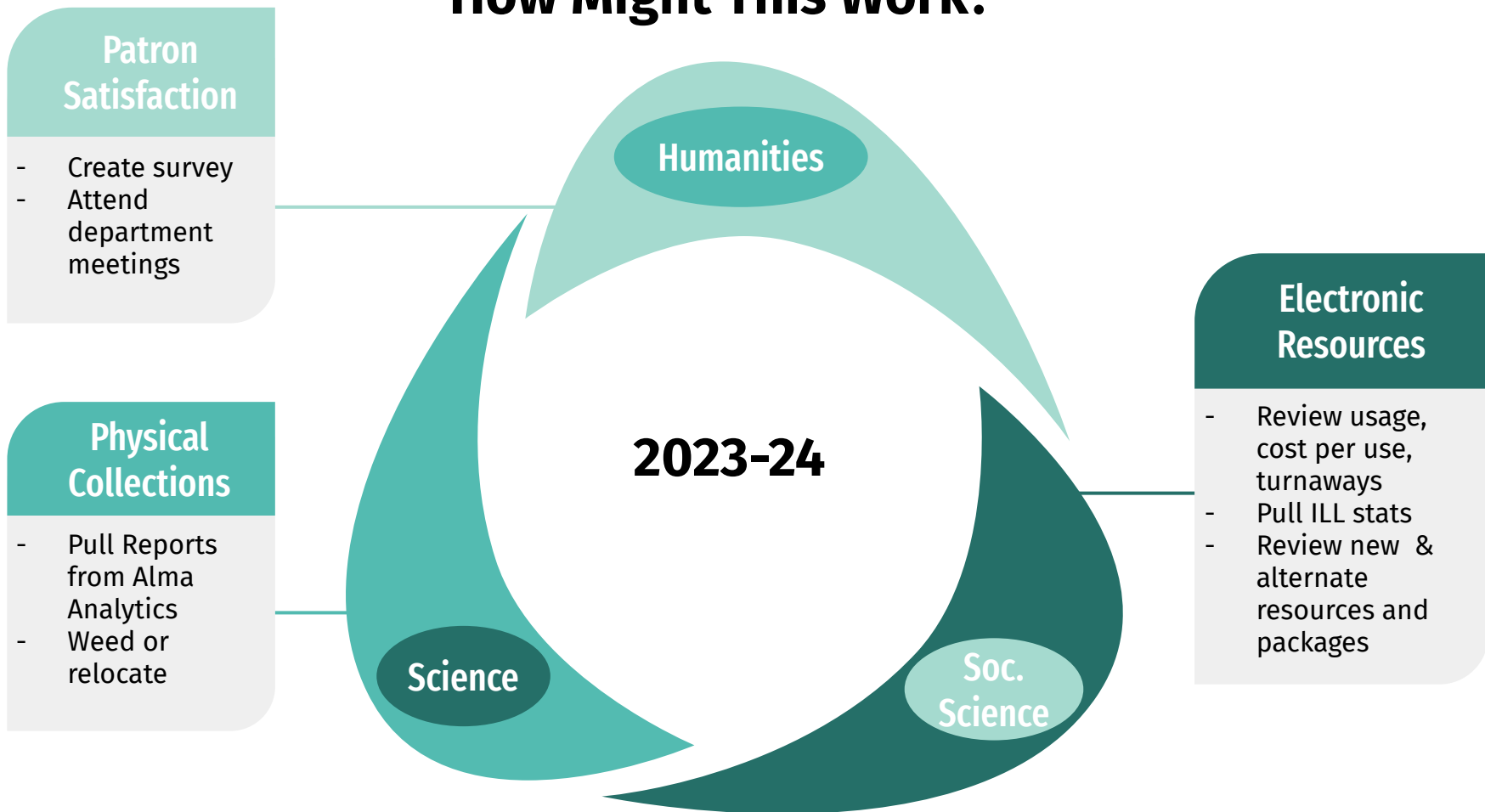
Areas of Assessment

- Physical Collection
- Electronic Resources
- Constituent satisfaction and needs

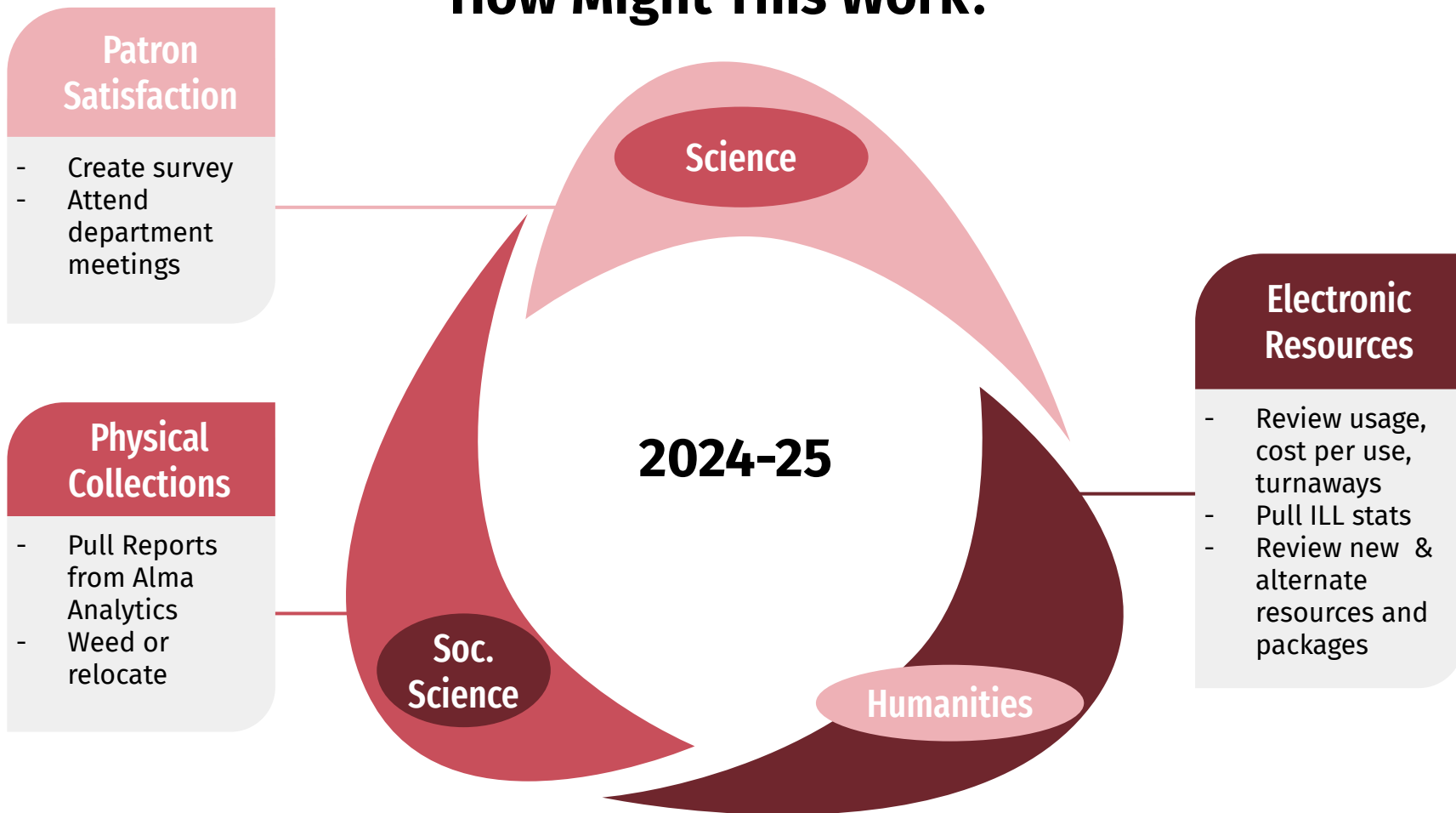
Timeline for Project

3 Years in which each
team tackles one
task per year

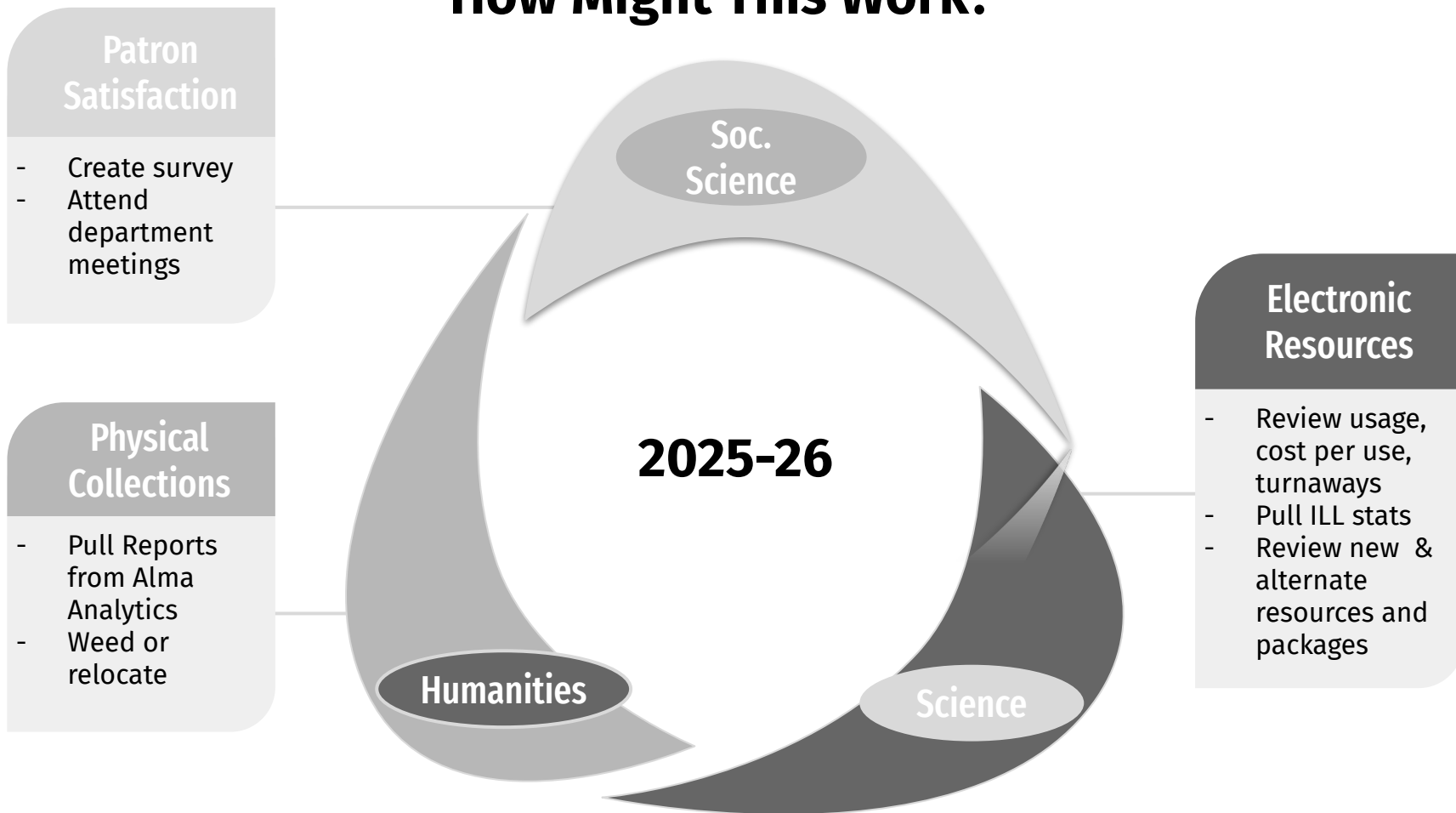
How Might This Work?




How Might This Work?




How Might This Work?




Looking Forward to 2026


 Integrated, systematic approach to assessment


 Creation of collection management librarian position or team

 Healthier workload for liaisons



 Increased outreach to patrons

 Better stewardship of fiscal resources and space

 Streamlined workflows and communication across departments and divisions

Tune In for More!

Contact Me

Renna Redd
Clemson University
Libraries
rennar@clemson.edu

