



Knowledge Syntheses Search Strategy Repositories: Canadian Case Studies

Medical Institutional Repositories in Libraries Symposium

November 16, 2023

Project Members



Heather Cunningham, University of Toronto

Jill Boruff, McGill University

Sabine Calleja, McGill University

Julia Martyniuk, University of Toronto

Ani Orchanian-Cheff, University Health Network

Alix Pincivy, Centre hospitalier universitaire Sainte-Justine (CHUSJ)

Alisa Rod, McGill University

Daniela Ziegler, Centre hospitalier de l'Université de Montréal (CHUM)

Knowledge Synthesis as Data



- Knowledge Synthesis (KS) position in Evidence-Based Medicine
- The Preferred Reporting Items for Systematic Reviews and Meta-Analyses Search Extension (PRISMA-S)
 - Full reporting of the search strategy
 - Uploading documentation of all search strategies into a data repository to increase accessibility, transparency, and reproducibility

Borealis: The Canadian Dataverse Repository



- Based on the open-source Dataverse software, with development led by the Institute for Quantitative Social Sciences at Harvard University
- Bilingual, multidisciplinary, secure, Canadian research data repository, supported by academic libraries and research institutions across Canada
- Supports open discovery, management, sharing, and preservation of Canadian research data
- Chosen by all three case studies (McGill University, Université de Montréal teaching hospitals, and the Health Sciences Information Consortium (HSIC))

Case Study – McGill University



- 6 Health Science Librarians supporting KS projects at a large research and teaching institution
- 1 Research Data Management (RDM) specialist
- KS Dataverse created in January 2021 by Jill Boruff & Alisa Rod
- Borealis Dataverse selected – best and easiest Canadian option because of cross-Canada access to Dataverse

Case Study – McGill University



- Project Components:
 - Creation of KS Dataverse and sub-Dataverses
 - Jill Boruff & Alisa Rod created **draft** Data Management Plan (DMP) & README file
 - 3 hour collaborative Dataverse-a-thon with colleagues to finalize documentations
- All librarians given administrative rights to publish without review into their discipline sub-collections
- Presented at the Canadian Health Libraries Association (CHLA) Conference in 2022

Case Study – McGill University



- Learning points:
 - DMPs time consuming to create
 - Challenging to integrate into workflows, but all colleagues are onboard with idea
 - Co-creation of documentation was time-consuming but worthwhile
 - Active learning key to understanding mechanics of Dataverse infrastructure

McGill Librarian Knowledge Synthesis Search Materials Repository

https://borealisdata.ca/dataverse/mcgill_librarian_ks_search_repository

Searches as data: Archiving and
sharing search strategies using an
institutional data repository

<https://escholarship.mcgill.ca/concern/articles/z316q6751>



Case Study - Université de Montréal two teaching hospitals



Centre Hospitalier Universitaire Sainte-Justine (CHUSJ)

- 2 Medical librarians supporting KS projects
- KS Dataverse created in January 2023 by Ève Paquerette-Bigras & Alix Pincivy

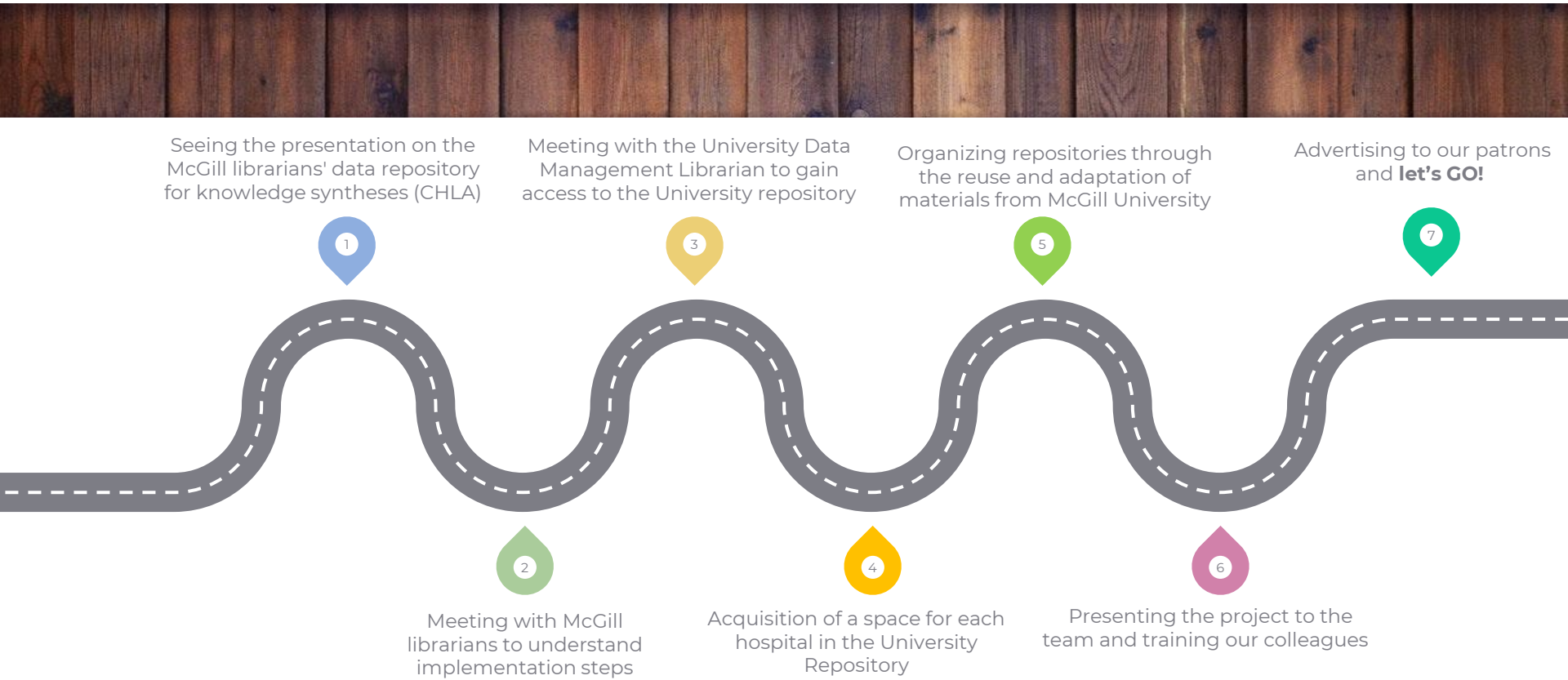
Centre Hospitalier de l'Université de Montréal (CHUM)

- 7 Medical librarians supporting KS projects
- KS Dataverse created in January 2023 by Ève Paquerette-Bigras & Daniela Ziegler

Université de Montréal

- 1 RDM specialist
- Université de Montréal Borealis Dataverse selected – Institutional Dataverse of the university of affiliation of the two hospitals

Case Study - Université de Montréal teaching hospitals: RoadMap



Case Study - Université de Montréal teaching hospitals



Characteristics of the Repositories	CHUSJ	CHUM
Same DMP and ReadMe file for all the datasets	✓	✓
Organization by institutional research themes [CHUSJ] [CHUM]	✓	✓
Deposit in the repository [CHUSJ] [CHUM]	✓	✓ Not mandatory
Bilingual dataset title and keywords	✓	X
Dataset description in French	✓	✓
Data management rights: Each team has one administrator and the rest are curators.	✓	✓

Case Study - Université de Montréal teaching hospitals



CHUSJ

(Revue systématique)

<https://borealisdata.ca/dataverse/chusj>



CHUM

(Stratégies de recherche pour les synthèses des connaissances)

<https://borealisdata.ca/dataverse/bibliochum>

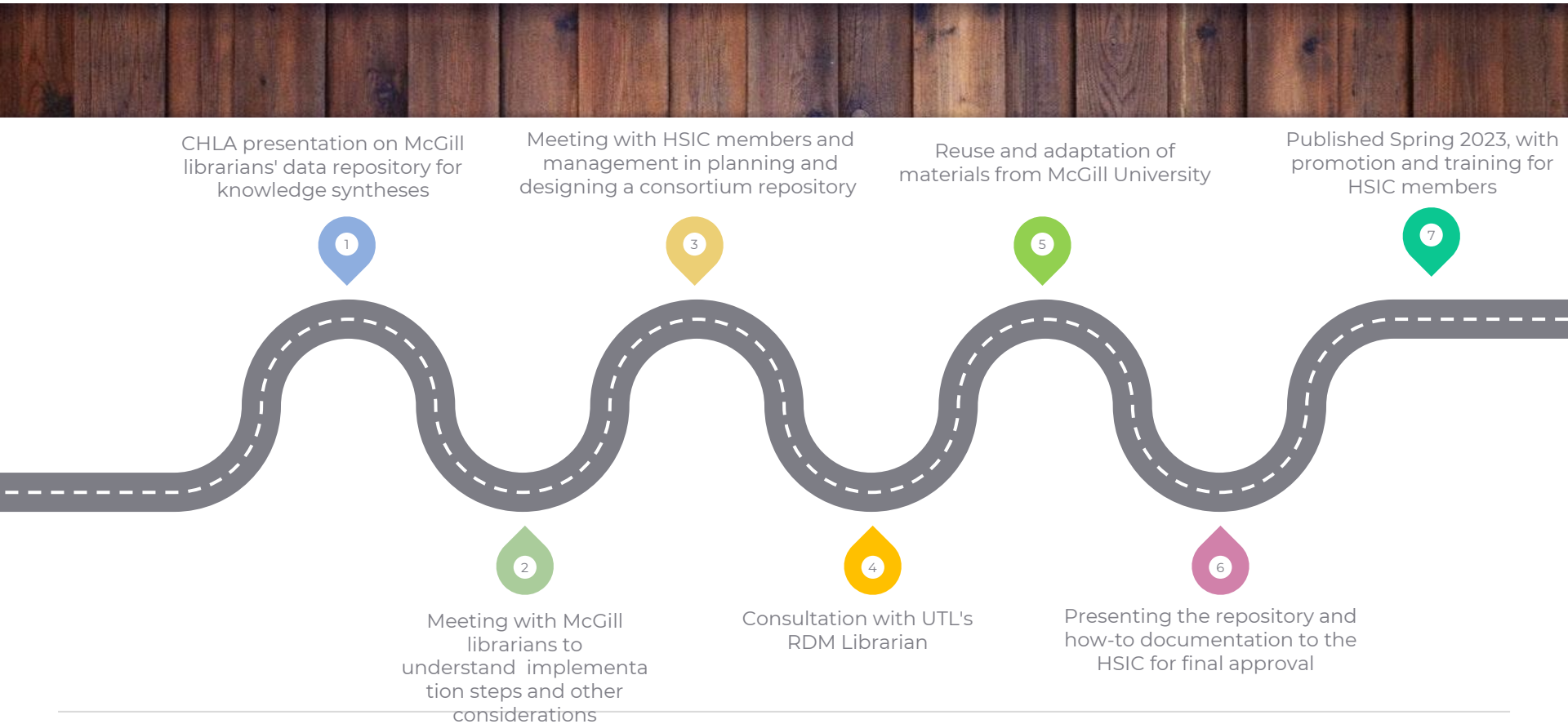


Case Study - Health Science Information Consortium



- HSIC – largest health information related consortium in Ontario
- Consists of 41 member institutions, and includes the University of Toronto Libraries, fully affiliated and partially affiliated teaching hospitals, as well as community hospitals
- Wide network of librarians working on KS projects
- 1 RDM librarian at the University of Toronto Libraries

Case Study - Health Science Information Consortium: RoadMap



Case Study - Health Science Information Consortium



- HSIC Knowledge Synthesis Search Strategies Repository
 - Sub-Dataverse for Documentation and How-to for librarians
 - 9 subject specific sub-Dataverses
- Interested librarians given admin rights to publish without review
- Take-up has been slow



Lessons Learned



- Borealis' Pan-Canadian research infrastructure facilitates decision-making
- Need to consider the nuances of each repository
- RDM knowledge or support from an expert is invaluable
- DMPs take a lot of work, so being able to reuse and adapt can save time
- Hands-on training required for dataset upload in Borealis
- Continuous promotion and dialogue needed in order to establish new step in KS workflow

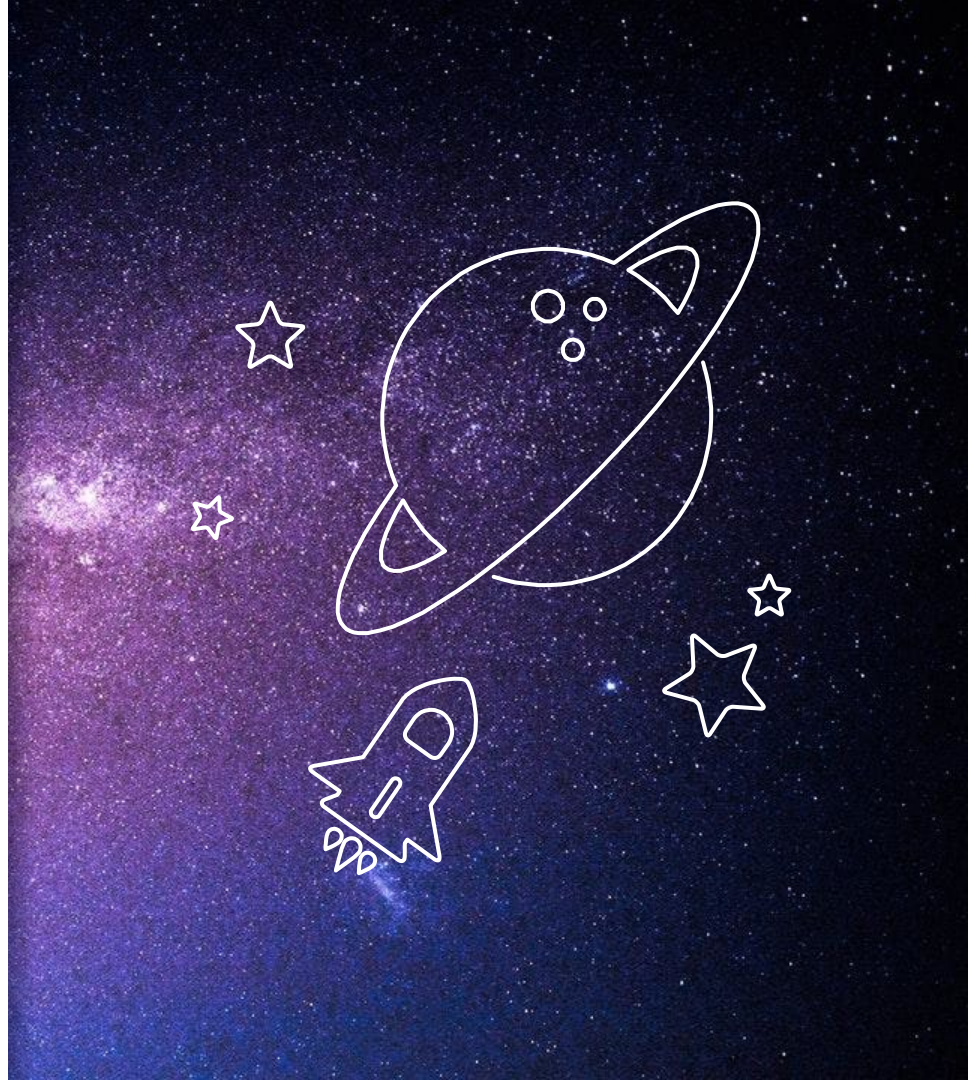
Future Research



National Canadian survey of health science librarians' attitudes and behaviours regarding the documentation and sharing of knowledge synthesis search strategies

Thanks!

We welcome any questions
during the Q&A



Credits



Special thanks to all the people who made and released these awesome resources for free:

- Presentation template by [SlidesCarnival](#)
- Photographs by [Unsplash](#)