

# Collaboration for conservation: Assessing countrywide carnivore occupancy dynamics from sparse data

Leanne K. Van der Weyde<sup>1,2</sup>  | Mathias W. Tobler<sup>2</sup> | Marie Charlotte Gielen<sup>1</sup> | Gabriele Cozzi<sup>3,4</sup> | Florian J. Weise<sup>5,6</sup> | Tempe Adams<sup>7</sup> | Dominik Bauer<sup>8</sup> | Emily Bennitt<sup>9</sup> | Matthew Bowles<sup>10</sup> | Alienor Brassine<sup>11</sup> | Femke Broekhuis<sup>12</sup> | Michael Chase<sup>7</sup> | Kai Collins<sup>13,14</sup> | Genevieve E. Finerty<sup>15</sup> | Krystyna Golabek<sup>3</sup> | Robyn Hartley<sup>16</sup> | Steve Henley<sup>15</sup> | Jessica Isden<sup>17</sup> | Derek Keeping<sup>18</sup> | Kristina Kesch<sup>8</sup> | Rebecca Klein<sup>1</sup> | Morulaganyi Kokole<sup>1</sup> | Robynne Kotze<sup>19</sup> | Eric LeFlore<sup>5</sup> | Glyn Maude<sup>20</sup> | Kevin McFarlane<sup>21</sup> | J. Weldon McNutt<sup>3</sup> | Gus Mills<sup>22</sup> | Mompoloi Morapedi<sup>20</sup> | Simon Morgan<sup>16</sup> | Keitumetse Ngaka<sup>20</sup> | Nicolas Proust<sup>13</sup> | Lindsey Rich<sup>3</sup> | Marnus Roodbal<sup>10</sup> | Moses Selebatso<sup>20</sup> | Andrei Snyman<sup>23</sup> | Andrew Stein<sup>5</sup> | Robert Sutcliff<sup>7</sup> | Botilo Tshimologo<sup>24</sup> | Carolyn Whitesell<sup>19</sup> | Christiaan Winterbach<sup>19</sup> | Michael V. Flyman<sup>25</sup>

<sup>1</sup>Cheetah Conservation Botswana, Gaborone, Botswana

<sup>2</sup>San Diego Zoo Institute for Conservation Research, Escondido, CA, USA

<sup>3</sup>Botswana Predator Conservation Trust, Maun, Botswana

<sup>4</sup>Department of Evolutionary Biology and Environmental Studies, University of Zurich, Zurich, Switzerland

<sup>5</sup>CLAWS Conservancy, Worcester, MA, USA

<sup>6</sup>Eugene Marais Chair of Wildlife Management, Centre for Invasive Biology, University of Pretoria, Pretoria, South Africa

<sup>7</sup>Elephants Without Borders, Kasane, Botswana

<sup>8</sup>WildCRU, Oxford University, Oxford, UK

<sup>9</sup>Okavango Research Institute, Maun, Botswana

<sup>10</sup>Walking for Lions, Pandamatenga, Botswana

<sup>11</sup>Wildlife and Reserve Management Research Group, Rhodes University, Grahamstown, South Africa

<sup>12</sup>Wildlife and Ecology and Conservation Group, Wageningen University and Research, Wageningen, the Netherlands

<sup>13</sup>Wilderness Safaris, Maun, Botswana

<sup>14</sup>Department of Zoology and Entomology, Mammal Research Institute, University of Pretoria, Pretoria, South Africa

<sup>15</sup>Leopard Ecology and Conservation, Khutse Game Reserve, Botswana

<sup>16</sup>Wildlife Act, Maun, Botswana

<sup>17</sup>Elephants for Africa, Khumaga, Botswana

<sup>18</sup>Department of Renewable Resources, University of Alberta, Edmonton, Canada

<sup>19</sup>Tau Consultants, Maun, Botswana

<sup>20</sup>Kalahari Research and Conservation, Maun, Botswana

<sup>21</sup>Limpopo-Lipadi Private Game and Wilderness Safaris, Botswana

<sup>22</sup>Lewis Foundation, Johannesburg, South Africa

<sup>23</sup>Mashatu Research, Mashatu Game Reserve, Botswana

This is an open access article under the terms of the Creative Commons Attribution License, which permits use, distribution and reproduction in any medium, provided the original work is properly cited.

© 2021 The Authors. *Diversity and Distributions* published by John Wiley & Sons Ltd.

<sup>24</sup>Birdlife Botswana, Gaborone, Botswana

<sup>25</sup>Ministry of Environment, Natural Resources Conservation and Tourism, Gaborone, Botswana

#### Correspondence

Leanne K. Van der Weyde, Centre for Ecosystem Services, University of NSW, Sydney, Australia.  
Email: [leannevdw@gmail.com](mailto:leannevdw@gmail.com)

Editor: Luigi Maiorano

#### Abstract

**Aim:** Assessing the distribution and persistence of species across their range is a crucial component of wildlife conservation. It demands data at adequate spatial scales and over extended periods of time, which may only be obtained through collaborative efforts, and the development of methods that integrate heterogeneous datasets. We aimed to combine existing data on large carnivores to evaluate population dynamics and improve knowledge on their distribution nationwide.

**Location:** Botswana.

**Methods:** Between 2010 and 2016, we collated data on African wild dog, cheetah, leopard, brown and spotted hyaena and lion gathered with different survey methods by independent researchers across Botswana. We used a multi-species, multi-method dynamic occupancy model to analyse factors influencing occupancy, persistence and colonization, while accounting for imperfect detection. Lastly, we used the gained knowledge to predict the probability of occurrence of each species countrywide.

**Results:** Wildlife areas and communal rangelands had similar occupancy probabilities for most species. Large carnivore occupancy was low in commercial farming areas and where livestock density was high, except for brown hyaena. Lion occupancy was negatively associated with human density; lion and spotted hyaena occupancy was high where rainfall was high, while the opposite applied to brown hyaena. Lion and leopard occupancy remained constant countrywide over the study period. African wild dog and cheetah occupancy declined over time in the south and north, respectively, whereas both hyaena species expanded their ranges. Countrywide predictions identified the highest occupancy for leopards and lowest for the two hyaena species.

**Main Conclusions:** We highlight the necessity of data sharing and propose a generalizable analytical method that addresses the challenges of heterogeneous data common in ecology. Our approach, which enables a comprehensive multi-species assessment at large spatial and temporal scales, supports the development of data-driven conservation guidelines and the implementation of evidence-based management strategies nationally and internationally.

#### KEYWORDS

Botswana, data sharing, distribution, human-dominated landscapes, imperfect detection, management, protected areas

## 1 | INTRODUCTION

Monitoring wildlife distributions and population persistence are essential for determining causes of decline and developing strategies to counteract such declines. However, particularly at large national and international scales, mapping and assessing changes in distribution is challenging because the required data are often difficult to obtain. This is mainly due to high research costs, logistical difficulties and time constraints. Consequently, many distribution

maps are modelled from limited empirical data, potentially leading to over- or under-estimated distributional ranges (Jetz et al., 2008). Collaboration and data sharing among researchers and organizations could address these shortcomings by generating the needed volume of data (Hampton et al., 2013). For globally declining species, such as many of the large-bodied carnivores (Di Minin et al., 2016; Ripple et al., 2014), sharing available information might thus become key to improving our knowledge on their distribution, persistence and colonization and to inform management and conservation strategies.

Utilizing data from many different sources, however, requires analytical tools able to integrate heterogeneous datasets, a common problem in ecology.

In recent years, several analytical methods have been developed to assess species occupancy, persistence and colonization. Occupancy, the probability that a species is present at a particular site (MacKenzie et al., 2002), is widely used where abundance or density is more difficult to estimate, and it provides the ability to measure species-, site- or survey-specific detection probabilities (Broms et al., 2016). A growing body of occupancy studies has demonstrated the potential to develop multi-species approaches (Broms et al., 2016), to consolidate data from multiple survey methods to improve parameter estimates (Linden et al., 2018; Nichols et al., 2008) and to use single-visitation data to estimate detection parameters (Lele et al., 2012; Peach et al., 2017). Yet, where data are sparse in space and time, and heterogeneous in structure, there remains a need to incorporate these aspects into a single analytical framework. This creates opportunities to harness existing datasets from a variety of sources that could be used to improve species management by assessing the impact of various environmental and anthropogenic factors on species distributions and dynamics at large spatial scales and over extended periods of time.

Anthropogenic and environmental factors such as human distribution and activities, land use, habitat characteristics, prey availability, rainfall, as well as intra-guild competition and predation have been shown to affect carnivore distribution, abundance, movement and survival (Qi et al., 2020; Rich, Miller, et al., 2017; Ripple et al., 2014). For instance, while the larger, conspicuous lion (*Panthera leo*) and spotted hyaena (*Crocuta crocuta*) are often confined to protected areas (Bauer et al., 2015; Mills & Hofer, 2013), the smaller and more mobile cheetah (*Acinonyx jubatus*), African wild dog (*Lycaon pictus*), leopard (*P. pardus*) and brown hyaena (*Parahyaena brunnea*) demonstrate an ability to also occupy agro-pastoral regions (Boast & Houser, 2012; Lindsey et al., 2004). These regions vary in both human and livestock densities, thus influencing the presence of large carnivores through variations in persecution risk, prey populations and water availability. The influence of anthropogenic and environmental factors on carnivores may act locally or at larger spatial scales and effects may manifest seasonally or over longer periods of time. Particularly in arid and seasonally fluctuating environments, spatio-temporal changes in prey availability and surface water can have important consequences on movement and distribution of carnivores. Although many wildlife species are resilient to small fluctuations in anthropogenic and environmental factors (Qi et al., 2020), large carnivore range and resource requirements render them particularly vulnerable to extinction where drastic habitat changes occur (Ripple et al., 2014).

Few sub-Saharan countries still support an intact large carnivore guild with viable populations. Across most of southern Africa, habitats and populations have already been fragmented severely (e.g. Riggio et al., 2012). Botswana is an exception, with strong carnivore populations that occur contiguously across most of the country (Ray et al., 2005; Winterbach et al., 2014). Recent studies have highlighted

Botswana's value in ensuring connectivity of lion populations across neighbouring countries, an essential requirement for long-term genetic viability (Cushman et al., 2018). Similarly, Botswana provides a critical linkage between cheetah populations scattered across the southern African sub-region (Weise et al., 2017). It follows that maintaining within-country connectivity will be paramount for both national and international conservation efforts. There is a need, therefore, to improve carnivore distribution knowledge in Botswana, particularly beyond the well-known populations residing in protected areas (PAs), and to identify key areas that are important for their long-term survival, while maintaining connectivity between populations.

Our objective was to formulate a dynamic occupancy model that could integrate data from a range of survey methods and species to investigate spatial and temporal factors influencing large carnivore distribution in Botswana. We predicted that major drivers like human population, livestock density, rainfall and land use would be key determinants affecting occupancy of all species, while seasonal changes in primary productivity would mainly influence short-term persistence and colonization. Additionally, we aimed to use our model to predict the probability of occurrence of each species countrywide, thus also covering areas that lack empirical data.

## 2 | MATERIALS AND METHODS

### 2.1 | Study area

Botswana covers approximately 582,000 km<sup>2</sup> and has a growing population of more than 2.3 million people (Statistics Botswana, 2014). Located on a plateau, its mean altitude above sea level is approximately 1,000 m (Burgess et al., 2006). Botswana is relatively flat and, except in the north with its seasonally inundated Okavango Delta-Chobe River ecosystem, it is a mostly arid country dominated by savanna biomes and the Kalahari Desert. Several large salt pans (Makgadikgadi-Ntwetwe-Sua ecosystem) that span over 20,000 km<sup>2</sup> occur in the centre of the country. Rainfall is highly seasonal with a dry season between May and October and a wet season between November and April (Batisani & Yarnal, 2010). The vegetation is determined by a strong north (>600 mm) to south (<200 mm) rainfall gradient (Cooke, 1985).

Nearly 40% of Botswana comprises formally protected areas like National Parks and Game Reserves, as well as Wildlife Management Areas (WMAs). While the latter are not gazetted as formally protected by the government (Twyman, 2001), wildlife-oriented activities (e.g. photographic and hunting tourism) are the main form of land use in WMAs (Parry & Campbell, 1990). Much of the remainder of the country is used for agro-pastoral activities (primarily cattle or crop farming) on communal, leasehold or freehold land (National Resource Services, 2002). Botswana's urban population is mostly concentrated in large cities, towns or villages, in the eastern part of the country, while the rural population is spread among remote villages, farms and cattle posts (Statistics Botswana, 2014).

## 2.2 | Data collection and processing

We gathered presence-only and presence/absence data for six large carnivores (African wild dog, brown hyaena, cheetah, leopard, lion and spotted hyaena) from 31 datasets collected by 19 independent researchers or organizations over the period May 2010–April 2016. We considered four methods of data collection: camera trapping, spoor surveys along transects, telemetry data from very high frequency (VHF) and global positioning system collars (GPS) collars, and opportunistic sightings. Where telemetry data originated from translocated individuals, we only used locations after 1 year from translocation to ensure that the data represented settled individuals.

We divided Botswana into a  $10 \times 10$  km grid in ArcGIS (ESRI, v10.3), resulting in a total of 5,985 grid cells. We asked each researcher/organization to provide data on any or all of the six large carnivores detected during their research in any of the grid cells: for each grid cell, species were reported as either detected or not detected with a specific method (Figure 1). We pooled the data into 6-month periods coinciding with the wet and dry season, respectively, providing a total of 12 sampling sessions for the entire study. We included in the analysis grid cells that were surveyed with any of the four methods during at least one of the 12 sessions.

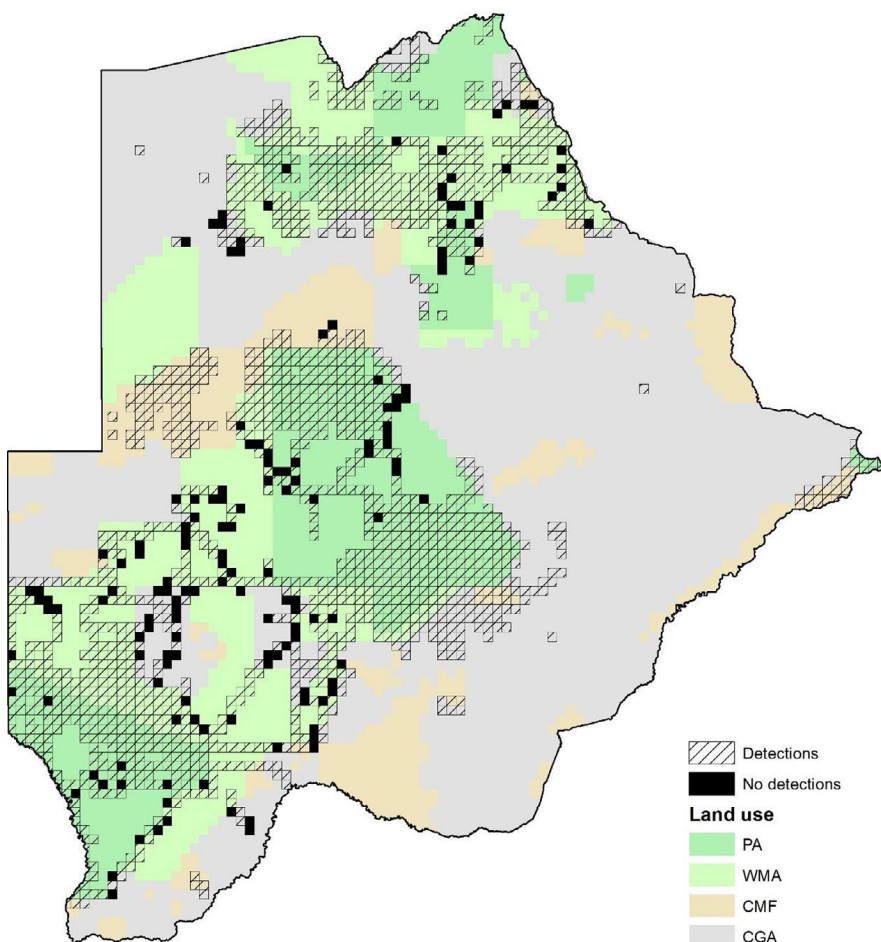
We calculated sampling effort in each grid cell during each session for camera trap and spoor surveys to account for the differences

in effort between datasets and cells. For camera traps, we summed the total number of recording days or camera days across all active devices per grid cell. Sampling effort varied between 0 and 108 days/session. For spoor surveys, we summed the total sampling distance across all transects surveyed in a grid cell during a particular sampling session. Sampling effort varied between 0 and 100.45 km/session. As telemetry records and opportunistic sightings were available as presence-only data, we could not estimate sampling effort for these methods.

## 2.3 | Predictors of large carnivore occurrence

We collated data on five covariates: land use, human population size, livestock density, rainfall and NDVI that we considered to have strong justification for influencing carnivore distribution (Henschel et al., 2016; Midlane et al., 2014; Mkonyi et al., 2018; Rich, Davis, et al., 2017; Winterbach et al., 2014). We used ArcMap (ESRI, v10.3) for data compilation, digital mapping and spatial analysis. Layers were in Africa Albers Equal Area Conic projection with D WGS 1984 datum. Maps of each layer are provided in the Figure S1.

We pooled land use types across Botswana into four categories, which best represented the majority of the country. Land use types were as follows: formally protected national parks and game



**FIGURE 1** Location of grid cells ( $10 \times 10$  km) that were surveyed across Botswana and those showing detections of at least one of the six large carnivores. Land use divided into four categories: protected areas (PA), wildlife management areas (WMA), commercial farms (CMF) and communal grazing areas (CGA) are also shown distributed across the country

reserves used for recreational purposes (PAs); wildlife management areas used for recreational and some agricultural activities (WMAs); freehold and leasehold commercial farms and ranches commonly used for agro-pastoral activities (CMFs); and communal grazing, arable land and settlements (CGAs). We used the majority tool in zonal statistics in ArcMap to identify the dominant land use for each cell.

To calculate human population size, we used data from the 2011 National Census, as this was the most recent information available. We created a human population index map by summing population size values of all the settlements falling into each grid cell. To account for the fact that human influence may extend beyond a particular grid cell, values for single cells were the sum of its value plus the value of its adjoining eight cells. Although this will potentially overestimate population size, it provided a more realistic layer for showing relative variation in human population density across the country. We checked our map against the Global Population Count and Human Footprint maps (CIESIN, 2016) to ensure our covariate layer was suitable.

We calculated livestock density from aerial surveys conducted by the Department of Wildlife and National Parks (DWNP) of Botswana in 2012, 2013 and 2015. We included cattle, donkey, sheep, goat and horse data. As aerial surveys did not cover the same spatial extent each year, we pooled data from the three surveys to create a single livestock density map covering the entire country. Livestock survey data, recorded as the number of livestock per  $1 \times 1$  km raster pixels, were first averaged for overlapping grids and mean values were then created for each of our  $10 \times 10$  km grid cells for the analysis.

Rainfall data for each season were available from rainfall stations (47–60 per session) located across the country. We interpolated these data using inverse distance weighting (IDW), resulting in a  $1 \times 1$  km raster file. We subsequently rescaled raster pixels to our  $10 \times 10$  km grid cells. We then combined seasonal rainfall data into a single layer that represented the average rainfall over the entire study period. This represents long-term climatic conditions that we assumed affects the large-scale distribution of all species and allowed us to assess the broader impact of above-ground water availability on carnivore occupancy along the north to south rainfall gradient that characterizes Botswana.

We utilized the normalized difference vegetation index (NDVI), which represents seasonal-specific changes in vegetation productivity, as a proxy for herbivore occurrence (Mueller et al., 2007; Pettorelli et al., 2009). We deemed this “vegetation greenness index,” which results from a combination of factors including rainfall, vegetation type, soil type and ambient temperature as appropriate to represent seasonal changes in herbivore distribution and availability. For each year, we obtained NDVI data using MODIS13A3 imagery from EarthData obtained from <http://lpdaac.usgs.gov>. We used  $1 \times 1$  km resolution MODIS/NDVI data (Didan, 2015) from June and December as representative months for the dry and wet season, respectively. We averaged and rescaled the  $1 \times 1$  km pixel data to match our  $10 \times 10$  km grid cells. We standardized all continuous covariates to a mean of zero and a standard deviation of one,

and we checked for correlation between covariates using variance inflation factors.

We limited our modelling of covariates for specific parameters for biological reasons and limitations due to our sparse data (Table 1). Human factors (e.g. population size and livestock density), land use and rainfall are likely to affect large-scale distributions of species across the country (Mkonyi et al., 2018; Weise et al., 2017). Similarly, rainfall can drive net primary productivity and has previously shown to affect occupancy (Henschel et al., 2016); however, mean rainfall should not directly affect extinction or colonization probabilities. Rather these parameters are largely driven by human factors or seasonal variation in productivity, as measured by NDVI (Fernandez et al., 2016).

## 2.4 | Modelling framework

For our dataset, we only had summarized data of whether a species was detected or not, together with the total survey effort. Lele et al. (2012) showed that occupancy and detection probability can be accurately estimated from single survey data, provided there is at least one continuous detection covariate that is not also used to estimate occupancy. Peach et al. (2017) extended this approach to a dynamic occupancy model.

Given that our data spanned 6 years, with two seasons in each year for a total of 12 sessions, and that we were interested in modelling occupancy trends over that period, we used a dynamic occupancy model to explicitly model local persistence and colonization (MacKenzie et al., 2003; Royle & Kéry, 2007). We extended the model by Peach et al. (2017) in two ways. First, we took advantage of the fact that we had data from four survey methods (although not necessarily all of them at the same site) and therefore used a multi-methods model (Nichols et al., 2008), which is analogue to a multiple independent-observer model (Allredge et al., 2006). Second, we formulated the model as a multi-species model to jointly model the six species together (Dorazio & Royle, 2005) and implemented it in a Bayesian framework.

Our response variable consisted of presence/absence data  $y_{ijtm}$  for each of the six species  $i = 1, 2, \dots, I$  and survey grid cell  $j = 1, 2, \dots, J$ , collected during each of the twelve sampling periods  $t = 1, 2, \dots, T$  with any of the four sampling method  $m = 1, 2, \dots, M$ . We modelled the true occupancy state  $z_{ijt}$  ( $z = 1$ : occupied,  $z = 0$ : unoccupied) over time  $t$ , where  $\psi_{ijt} = \Pr(z_{ijt} = 1)$  is the occupancy probability. We further defined the probability that a site remains occupied from time  $t$  to  $t + 1$  (“persistence”) as  $\phi_{ijt}$  and the probability of colonization for an unoccupied site as  $\gamma_{ijt}$ . We modelled the true occupancy state  $z_{ijt}$  as a Markovian process based on the initial state  $z_{ij1}$ :

$$z_{ij1} \sim \text{Bernoulli}(\psi_{ij1}) \text{ and } z_{ijt} | z_{ij(t-1)} \sim \text{Bernoulli}(z_{ij(t-1)}\phi_{ij(t-1)} + (1 - z_{ij(t-1)})\gamma_{ij(t-1)})$$

We modelled parameters as a function of covariates using a dot product of two vectors:  $X_{occ}$ ,  $X_{per}$  and  $X_{col}$  are covariate vectors

**TABLE 1** Summary of covariates considered to influence large carnivore occupancy ( $\psi$ ), persistence ( $\phi$ ), colonization ( $\lambda$ ) and detection probability ( $p$ )

Covariate	Parameter	Index	Source	Range of values per grid (100 km <sup>2</sup> )
Land use	$\psi$	Major land use type	Adapted from Ngami Data Services (2009)	PA, WMA, CGA, CMF
Rainfall	$\psi$	Mean across sessions	MESASADC <sup>a</sup> (2010–2016)	84.37–268.78 mm
Livestock density	$\Psi, \phi, \gamma$	Relative density	DWNP Aerial survey data (2012, 2013, 2015)	0–147.34 LSU
Human population size	$\Psi, \phi, \gamma$	Human population index	NSP <sup>b</sup> (2011)	0–56,251 individuals
Habitat	$\phi, \gamma$	NDVI per session	MODIS13A3, EarthData	0–0.83
Sampling effort – CT	$p$	Relative effort of cameras		0–108 days/session
Sampling effort – SP	$p$	Relative effort of transects		0–100.45 km/session

<sup>a</sup>Monitoring for Environment and Security in Africa & Southern African Development Community.

<sup>b</sup>National Spatial Plan from the Department of Town and Regional Planning.

for site  $j$  at time  $t$  and  $\beta_{occ_i}$ ,  $\beta_{per_i}$  and  $\beta_{col_i}$  are vectors of species-specific regression coefficients with  $occ$  = occupancy,  $per$  = persistence and  $col$  = colonization:

$$\text{logit}(\psi_{ijt}) = \beta_{occ_i} \cdot X_{occ_j}$$

$$\text{logit}(\phi_{ijt}) = \beta_{per_i} \cdot X_{per_{jt}}$$

$$\text{logit}(\gamma_{ijt}) = \beta_{col_i} \cdot X_{col_{jt}}$$

For our multi-species model, we modelled each regression coefficient hierarchically as random factors e.g.  $\beta_i \sim \text{Normal}(\mu, \sigma^2)$  where  $\mu$  is the mean and  $\sigma^2$  is the variance of a particular coefficient  $\beta$  across all species (Kéry & Royle, 2008).

For the two survey methods for which survey effort was quantifiable (i.e. camera traps and spoor surveys), we modelled the detection probability  $p_{ijtm}$  as a power function based on the detection probability per unit effort  $r_{ijm}$  and the total sampling effort  $k_{jtm}$  for method  $m$  at grid cell  $j$  during sampling period  $t$  (Peach et al., 2017).

$$p_{ijtm} = 1 - (1 - r_{ijm})^{k_{jtm}}$$

For survey methods that returned presence-only data and for which survey effort was not quantifiable (i.e. telemetry and opportunistic sightings), we set  $r_{ijm} = 1$  and  $k_{jtm} = 1$  (resulting in  $p_{ijtm} = 1$ ) for grid cells where the species was detected and  $k_{jtm} = 0$  (resulting in  $p_{ijtm} = 0$ ) for grid cells where the species was not detected.

The observed data  $y_{ijtm}$  is then the outcome of a Bernoulli process:

$$y_{ijtm} \sim \text{Bernoulli}(z_{ijt} p_{ijtm})$$

We implemented the model in JAGS (Plummer, 2003) through software R (R Development Core Team, 2019). We computed three chains with 80,000 iterations, a burn-in of 40,000 iterations and a thinning rate of 40. We assessed convergence visually and considered the Gelman–Rubin statistic with a value of <1.1 acceptable

(Gelman & Rubin, 1992). Code for running the model in JAGS is provided as Figure S2.

We mapped changes in occupancy over time by subtracting the predicted occupancy values for sampled grids of the last session from predicted occupancy values of the first session. Lastly, we predicted occupancy nationwide, that is also for unsampled grid cells using the same dynamic model for unconditional estimates of  $\psi$ .

### 3 | RESULTS

A total of 1656 (28%) grid cells were surveyed at least once with any of the four methods. Areas in the north–west, east and south–east of the country were under-sampled (Figure 1). The majority of data were obtained through spoor surveys. At least one focal species was recorded at least once in the 1,496 surveyed grid cells (90%), while no large carnivores were detected in the remaining 160 grid cells. Lions and African wild dogs were the most and least detected species, respectively (Table 2).

Occupancy was negatively correlated with livestock density for all species except the brown hyaena (Table 3). This species had strong evidence for higher occupancy in commercial farms than PAs, whereas African wild dog, leopard and lion had lower occupancy. For all species, occupancy probability did not differ between protected areas, WMAs or communal grazing areas. A strong negative correlation with human population size was evident only for lion, indicating minimal opportunity for lions to persist in densely human-populated areas. Rainfall positively correlated with occupancy of the two largest species, lion and spotted hyaena, while it was negatively correlated with brown hyaena occupancy (Table 3), highlighting the adaptation of the latter to arid environments.

The relationship between persistence and colonization and the three covariates varied considerably across the focal species (Table 3). While persistence of brown hyaena and spotted hyaena was positively associated with human population size, the probability of colonizing new areas by these species had a negative relationship with human population. In contrast, leopard persistence was

**TABLE 2** Number of grid cells with detections during at least one survey for each of the six focal carnivore species from four survey methods. Detections in cells between species were not mutually exclusive

Species	Camera trap	Sightings	Spoor	Telemetry	Total cells detected
African wild dog	32	85	163	70	294
Cheetah	27	126	181	112	394
Brown hyaena	32	25	469	0	516
Leopard	46	75	406	199	659
Spotted hyaena	34	84	354	12	426
Lion	33	98	335	561	881
Total cells surveyed	69	239	1,025	759	1,656

negatively associated with human density. Livestock density positively influenced African wild dog persistence but did not appear to strongly influence the other large carnivores in terms of persistence or colonization. NDVI had a strong negative effect on cheetah and lion persistence, but a positive effect on wild dog and spotted hyaena persistence. Brown hyaena colonization was highly influenced by NDVI, with increasing colonization in drier areas.

Between 2010 and 2016, occupancy varied for each species in different regions of the country (Figure 2; 95% credible intervals are shown in Figure S3). Leopard and lion occupancy remained relatively constant in sampled grid cells across the entire country throughout the 6-year study period (change between year 1 and year 2 for lion:  $-0.014$  (CI:  $-0.034$  to  $0.008$ ), leopard  $-0.034$  (CI:  $-0.072$  to  $0.001$ )). Cheetah occupancy also remained relatively constant in the southern regions, while it diminished in the north resulting in an overall decline ( $-0.188$ , CI:  $-0.258$  to  $-0.128$ ). Conversely, African wild dog occupancy declined in the south but remained stable in the north with a net decline across the surveyed range ( $-0.275$ , CI:  $-0.415$  to  $-0.042$ ). Brown hyaenas expanded their presence into the northern part of the country and disappeared in some areas of the south, with an overall decline in occupancy ( $-0.166$  (CI:  $-0.276$  to  $-0.034$ )). Finally, spotted hyaenas expanded into some southern regions, but retracted some of their range in the centre of the country with overall occupancy staying constant ( $-0.025$ , CI:  $-0.194$  to  $0.103$ ).

We used the results from our model to generate nationwide predictions for each species. Figure 3 shows the predictions for the last session (Nov–April 2016), representing the most current estimation of the distribution of all species across Botswana (95% credible intervals are shown in S13). Predictions for the previous session, showing the latest dry season (May–Oct 2015), are reported in S13. Our models predicted high leopard and cheetah occupancy across the entire country (Figure 3). For the latter, low occupancy was predicted only in correspondence with the seasonally inundated Okavango Delta and Chobe River. Lion occupancy was predicted to be high across most parts of the country, except in areas characterized by high human population densities. African wild dog and spotted hyaena occupancy was predicted to decline along the north to south rainfall gradient, and this trend was particularly strong for spotted hyaena. Low predicted African wild dog occupancy in northern-central Botswana corresponded to the salt pans of the Makgadikgadi–Ntswetwe–Sua ecosystem. Brown hyaena was

predicted to occur across large portions of the country, except for the wetter northern regions.

## 4 | DISCUSSION

Our study is one of the first attempts to model carnivore occupancy on a national scale. The resulting knowledge is crucial for improving management efforts, particularly for a country like Botswana that holds some of the largest remaining carnivore populations in Africa (Weise et al., 2017; Winterbach et al., 2014) and thus plays a critical role in their conservation. We extended the single-visit multi-season occupancy model of Peach et al. (2017) by adding a multi-species and multi-method component. This allowed us to utilize existing data from different sources and generated with different survey methods. This novel approach was necessary to increase and expand sampling resolution and cover several ecosystems, thus improving our ability to identify factors influencing species distribution across years and over large spatial scales. A similar analysis would not have been possible using data collected by single researchers who generally focus on smaller study areas spanning a few thousand square kilometres (Cozzi et al., 2013; Van der Weyde et al., 2018; Weise et al., 2018).

We show that occupancy was mainly explained by livestock density and land use regime. Except for brown hyaena, occupancy was lowest in commercial rangelands and where livestock density was highest. One explanation is that, except for brown hyaenas that scavenge almost exclusively (Maude, 2005), our focal species regularly prey upon livestock and, therefore, suffer from retaliatory persecution (Boast et al., 2015; Weise et al., 2018) and may generally prefer to avoid human-dominated areas. Brown hyaena may thus take advantage of reduced intra-guild competition (Kent & Hill, 2013; Winterbach et al., 2017). A similar scenario has been hypothesized for cheetahs (Durant, 2000; Wachter et al., 2011; but see Scantlebury et al., 2014; Swanson et al., 2014), which are known to persist on farmlands (Boast & Houser, 2012; Weise et al., 2017). Our results indicated a strongly negative relationship between human population size and lion occupancy. Being large, vocal and social, lions are particularly vulnerable to persecution and most affected by high human densities, thus being unable to persist in areas where human populations surpass a certain threshold (Hemson et al., 2009; Woodroffe, 2000). As a consequence, lions were mainly

found to occupy PAs and WMAs. This highlights the need to safeguard these conservation areas and to enhance their connectivity to maintain genetically healthy lion populations (Cushman et al., 2018). Additionally, we found that communal rangelands are also utilized by many large carnivores and may serve as important habitats. Leopard occupancy was predicted to be high across the country, and this likely reflects its highly adaptable nature and tolerance of human-altered environments (Stein & Hayssen, 2013). Our grid size could also have influenced our findings, as truly unsuitable patches (e.g. city centres) may indeed be smaller than those used in this analysis. Due to the ecological plasticity that leopard exhibit, other predictors such as degree of anthropogenic persecution or intra-guild competition may be more useful for predicting distribution. Finally, we observed a positive relationship between rainfall and occupancy of lions and spotted hyaenas, the two largest species. This may be best explained by their preference for abundant, large prey such as Cape buffalo (*Syncerus caffer caffer*), zebra (*Equus quagga*) and wildebeest (*Connochaetes taurinus*), which commonly occur in large numbers in wetter, highly productive environments (Selebatso et al., 2018).

We found little consistency in the factors explaining carnivore persistence in already occupied areas and colonization of new areas. The negative effect of increasing human density on leopard persistence is not surprising considering that leopards are commonly reported to prey on livestock and likely to suffer from persecution in Botswana (Schiess-Meier et al., 2007; Selebatso et al., 2008), nor is the positive persistence of brown hyaena, a species known to cope well in human-dominated landscapes (Kent & Hill, 2013). However, the positive correlation between human density and persistence of spotted hyaenas was unexpected, and we have no clear explanations for this. Spotted hyaenas are highly adaptable and able to adjust their behaviour to benefit from humans (Kolowski & Holekamp, 2008; Yirga et al., 2016). In Botswana, however, they are generally perceived as a conflict species and not tolerated close to human habitation or livestock dwellings. As expected, high human density correlated negatively with all large carnivores' ability to recolonize an area. The effect of NDVI on persistence was more variable among species. Spotted hyaena had a higher probability of persistence in more productive environments, in agreement with our findings that this species occurred mostly in the northern regions. By contrast, lion and cheetah appeared to persist better in drier areas. This may be due to the highly seasonal rainfall that occurs in the northern areas of the country where prey abundance and distribution are seasonally variable (Bennitt et al., 2014; Kotze et al., 2020) forcing these species to adapt their movements in response to seasonal changes. We acknowledge that other factors such as population density of each species, which can lead to different degrees of intra- and inter-specific interactions (Durant, 2000; Rich, Miller, et al., 2017), might be as (or even more) important than environmental and anthropogenic factors to understand patterns of persistence and colonization. Although we did not attempt to account for co-occurrence patterns mainly due to limited sample sizes, we encourage doing so in future occupancy applications.

Our model predicted substantial portions of the country are suitable to maintain viable populations of the six large carnivores. Occupancy results indicated a distinct spatial separation between the two hyaena species, even though both species exhibited colonization into each other's mainstay range. Climate change-induced aridity may enable the dryland-dwelling brown hyaena to expand its distribution northward, while the creation of artificial watering holes in Botswana's arid south might facilitate spotted hyaena range expansion, as it already has with other wildlife (Selebatso et al., 2018). We, however, lack empirical information to formally test this hypothesis. Particularly noteworthy are the contrasting occupancy patterns observed for African wild dogs and cheetahs, which over the 6 years of this study suffered local declines in the south and north, respectively. This contrast is relevant considering that the two species are often considered jointly in national and international conservation action planning (RWCP & IUCN/SSC, 2015). We have no clear explanation for the sharp decrease in African wild dog occupancy in the south of the country, although this species is known to have dynamic population changes (Creel et al., 2004). However, reports of human conflict with wildlife species in southern Botswana have increased in recent years (Human-Wildlife Conflict Management Strategy, unpublished report), suggesting that the observed decline may be caused by intensified persecution by humans.

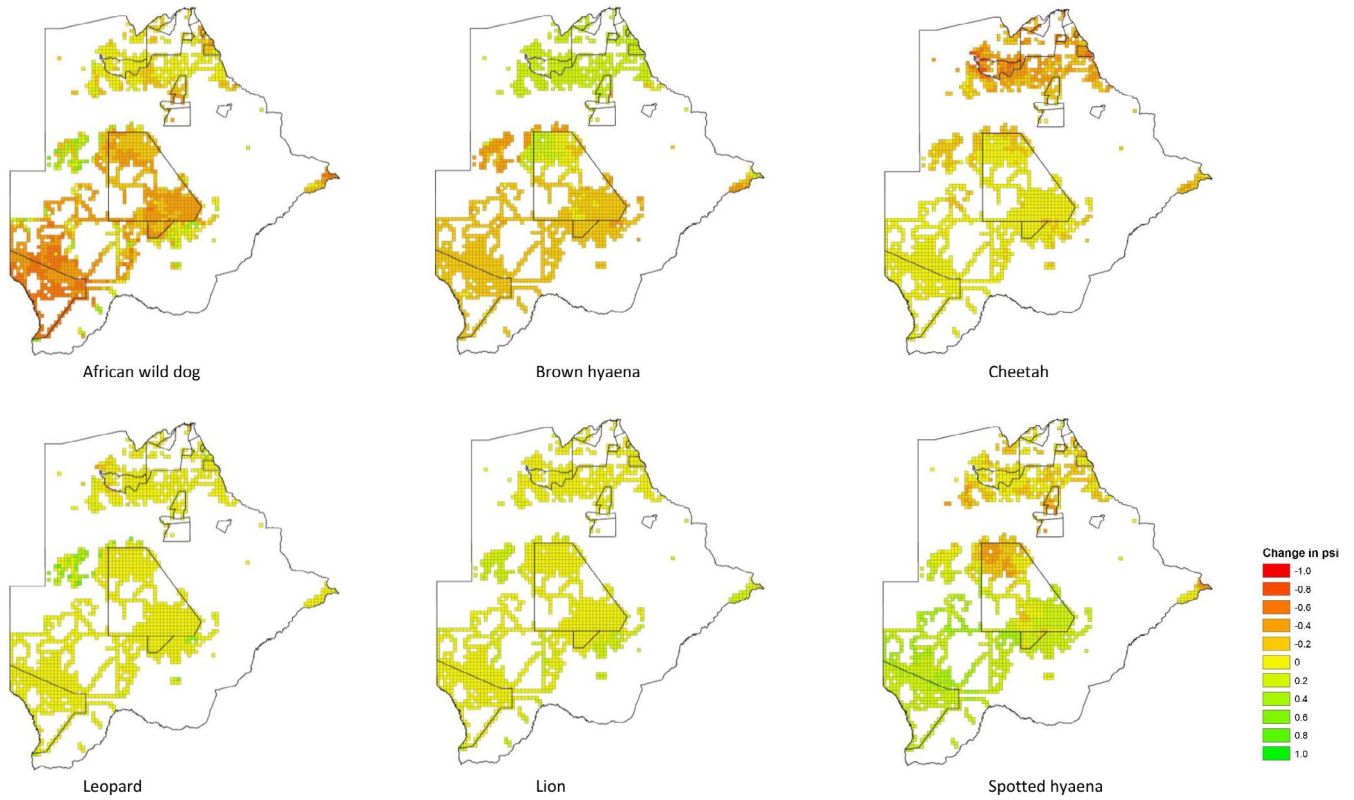
Combining a large number of datasets allowed us to produce the first estimates of carnivore distribution dynamics across Botswana, but the sparse nature of the data also resulted in some limitations. Dynamic occupancy models require repeated sampling of the same site to estimate probabilities of persistence and colonization (MacKenzie et al., 2003). There are few long-term carnivore research projects in Botswana, and, where they exist, they are often limited to small spatial scales, or areas that are more accessible or preferred by researchers (e.g. wildlife versus human-dominated areas), potentially biasing our findings. Consequently, the 6-year dataset lacked temporal replicates for some areas and species. Furthermore, there were few data for eastern Botswana, as well as the country's south-east, far south and north-west. This limits our inferences and increases uncertainty, as reflected by the model's large credible intervals. The temporal resolution of covariate data also potentially restricted our ability to detect significant changes. For example, we were only able to include a single estimate of human density and livestock abundance across the entire study period, although we expect that these changed during the study, leading to stronger impacts on wildlife distribution. Our use of NDVI as a proxy for prey availability may also be limited in identifying the strong influence that prey is known to exercise on carnivore distribution (Rich, Davis, et al., 2017; Winterbach et al., 2013). To accurately portray temporal trends and identify major factors influencing carnivore occupancy, strategic long-term research in select locations would improve estimate precision. Even so, the need for constructive collaboration remains, through data sharing and otherwise, to be able to produce national population estimates for single or multiple species, while also identifying major threats or positive conservation measures.



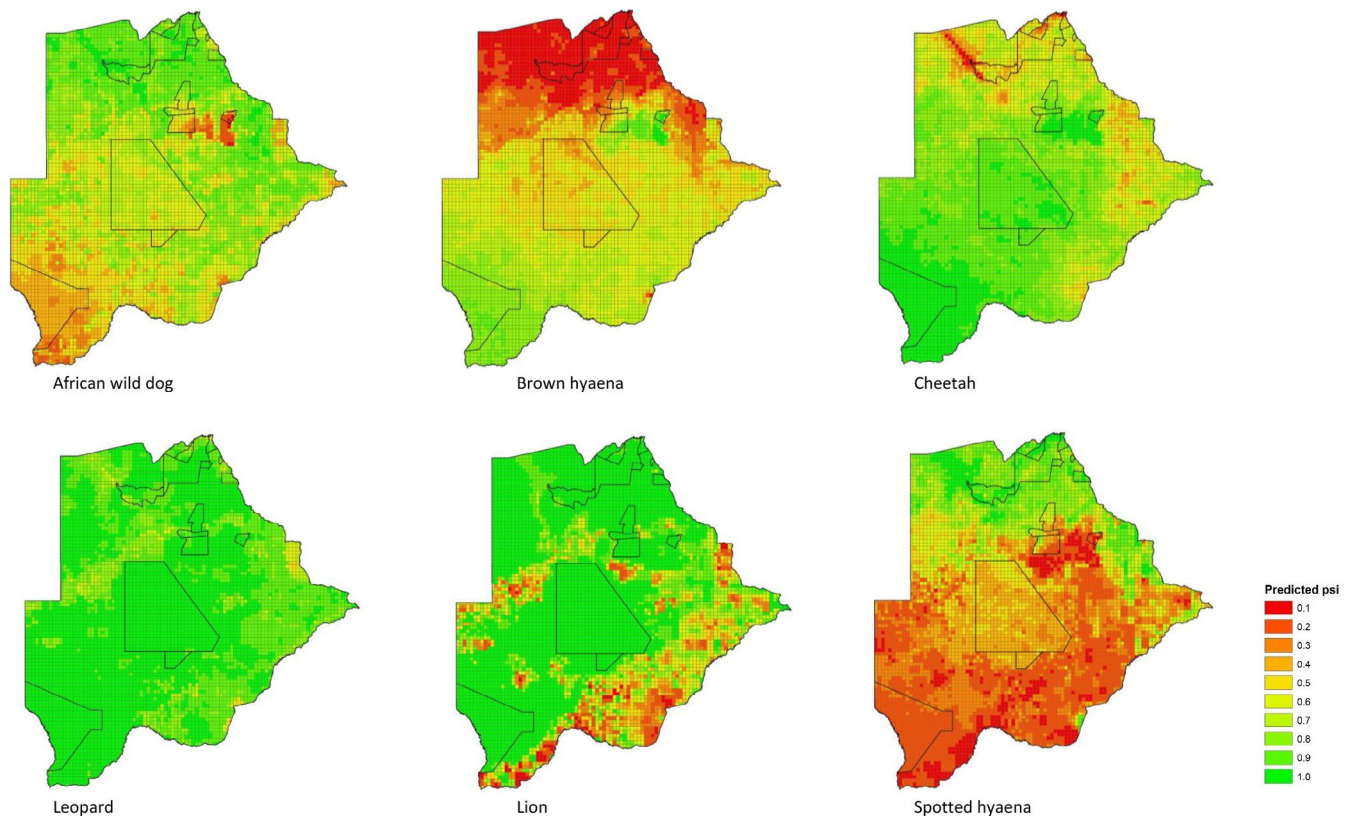
TABLE 3 Beta coefficients and 95% credible intervals of the dynamic occupancy model for each species, parameter and covariate included in the model

Parameter	Species	(Intercept)	Human population	Livestock density	Mean rainfall	Land use CGA	Land use CMF	Land use WMA	NDVI	
Occupancy ( $\psi$ )	African wild dog	3.73 ± 1.50 (1.11–6.90)	-0.36 ± 1.15 (-2.80–2.01)	-2.15 ± 0.94 (-4.23 to -0.60)	1.15 ± 1.58 (-1.95–4.28)	0.56 ± 1.34 (-1.82–3.45)	-3.54 ± 1.49 (-6.66 to -0.82)	1.341 ± 1.69 (-1.58–5.01)		
	Brown hyaena	0.92 ± 0.87 (-0.69–2.67)	-0.03 ± 0.65 (-1.26–1.24)	0.38 ± 0.80 (-1.14–1.94)	-3.82 ± 0.88 (-5.80 to -2.41)	0.07 ± 1.03 (-1.96–2.10)	2.91 ± 1.03 (1.09–5.11)	-0.57 ± 0.91 (-2.37–1.28)		
	Cheetah	5.30 ± 1.82 (2.45–9.20)	-0.92 ± 0.98 (-2.88–0.99)	-0.76 ± 0.81 (-2.19–1.08)	-0.99 ± 1.35 (-3.99–0.86)	-0.85 ± 1.75 (-4.28–2.79)	0.55 ± 1.99 (-3.11–4.34)	0.84 ± 1.59 (-1.90–4.14)		
	Leopard	5.23 ± 1.24 (3.06–7.89)	-0.16 ± 0.75 (-1.69–1.32)	-1.82 ± 0.61 (-3.10 to -0.70)	-0.69 ± 0.73 (-2.06–0.85)	0.96 ± 1.39 (-1.37–4.12)	-4.42 ± 1.30 (-7.07 to -1.93)	1.45 ± 1.60 (-1.32–4.98)		
	Lion	4.48 ± 0.83 (2.96–6.24)	-1.69 ± 0.57 (-2.85 to -0.61)	-1.48 ± 0.39 (-2.29 to -0.75)	1.38 ± 0.58 (0.39–2.62)	-0.49 ± 0.97 (-2.44–1.35)	-3.80 ± 0.96 (-5.78 to -2.02)	1.55 ± 1.53 (-0.98–4.89)		
	Spotted hyaena	-0.04 ± 0.98 (-1.79–2.00)	0.82 ± 0.83 (-0.79–2.34)	-1.36 ± 0.59 (-2.63 to -0.25)	4.56 ± 1.16 (2.47–7.13)	-0.32 ± 1.07 (-2.50–1.73)	-1.19 ± 1.04 (-3.44–0.68)	-1.57 ± 1.17 (-3.86–0.67)		
	Persistence ( $\rho$ )	African wild dog	3.33 ± 0.40 (2.64–4.23)	-0.12 ± 0.22 (-0.57–0.33)	0.80 ± 0.50 (0.01–1.94)				1.00 ± 0.25 (0.54–1.53)	
		Brown hyaena	2.49 ± 0.21 (2.13–2.97)	0.37 ± 0.17 (0.03–0.69)	0.07 ± 0.23 (-0.34–0.57)				-0.09 ± 0.21 (-0.49–0.33)	
		Cheetah	3.76 ± 0.34 (3.19–4.49)	-0.23 ± 0.2 (-0.63–0.16)	0.19 ± 0.35 (-0.39–0.97)				-0.75 ± 0.21 (-1.24 to -0.41)	
		Leopard	4.71 ± 0.29 (4.22–5.30)	-0.62 ± 0.25 (-1.14 to -0.15)	0.22 ± 0.27 (-0.28–0.77)				-0.36 ± 0.25 (-0.85–0.14)	
Lion		5.92 ± 0.51 (5.04–7.04)	-0.30 ± 0.33 (-0.94–0.34)	0.25 ± 0.44 (-0.48–1.32)				-0.90 ± 0.29 (-1.42 to -0.28)		
Spotted hyaena		2.32 ± 0.24 (1.89–2.85)	0.95 ± 0.21 (0.51–1.35)	-0.40 ± 0.27 (-0.89–0.15)				1.28 ± 0.29 (0.86–1.72)		
Colonisation ( $\gamma$ )		African wild dog	-2.66 ± 0.40 (-3.49 to -1.94)	-0.48 ± 0.31 (-1.02–0.18)	0.10 ± 0.33 (-0.52–0.77)				-0.05 ± 0.49 (-1.08–0.93)	
		Brown hyaena	-3.43 ± 0.28 (-3.99 to -2.91)	-0.54 ± 0.21 (-0.95 to -0.11)	0.02 ± 0.27 (-0.53–0.56)				-1.39 ± 0.20 (-1.80 to -1.01)	
		Cheetah	-3.99 ± 0.96 (-6.47 to -2.73)	-0.79 ± 0.45 (-1.84–0.01)	0.10 ± 0.47 (-0.79–1.13)				-1.12 ± 1.25 (-3.15–1.82)	
		Leopard	-2.41 ± 0.48 (-3.36 to -1.56)	-0.33 ± 0.40 (-0.99–0.55)	0.27 ± 0.39 (-0.38–1.16)				0.03 ± 0.71 (-1.39–1.37)	
	Lion	-3.98 ± 0.67 (-5.43 to -2.91)	-0.52 ± 0.40 (-1.40–0.26)	-0.22 ± 0.53 (-1.58–0.50)				1.36 ± 0.86 (-0.68–2.79)		
	Spotted hyaena	-3.00 ± 0.22 (-3.46 to -2.60)	-0.83 ± 0.20 (-1.23 to -0.48)	-0.21 ± 0.29 (-0.85–0.26)				0.02 ± 0.19 (-0.38–0.38)		

Note: Land use categories are communal grazing areas (CGA), commercial farms and ranches (CMF), wildlife management areas (WMA) and protected areas representing the baseline category (intercept). Credible intervals not overlapping zero are highlighted in bold.



**FIGURE 2** Change in large carnivore occupancy from May 2010 to April 2016 in Botswana, for 1,656 grid cells ( $10 \times 10$  km) that were surveyed by one of four methods (cameras, spoor, telemetry or sightings)



**FIGURE 3** Predicted large carnivore occupancy across Botswana based on data reported in 28% of the 1,656 grid cells ( $10 \times 10$  km). Predictions are based on the data from the final session of 2016. Protected areas are highlighted in bold

Our work highlights the necessity, and the feasibility, of collaborating on large-scale assessments of wildlife populations. Only rarely will any single organization or government agency manage to collect an adequate amount of data allowing assessment of wildlife distribution and population size at large scales. Even if data exist, the propensity of not sharing information, heterogeneous data structures, low consistency in repeat surveys and unequal sampling effort can present considerable challenges (Hampton et al., 2013; Rich, Davis, et al., 2017; Weise et al., 2017). Developing species distribution and population models that integrate heterogeneous data while accounting for imperfect detection are advancing rapidly (Linden et al., 2018; Peach et al., 2017), and our approach may assist in addressing the challenges of heterogeneous data common in wildlife ecology. Although we show that accommodating such data heterogeneity is possible, we stress the importance of regular coordination and collaboration among researchers and organizations to achieve the best possible conformity in data collection. Additionally, we highlight the value of maintaining heterogeneous land use types and livestock distribution in supporting carnivore conservation. Here, we focused on large carnivores, but our approach can be extended to any other species or taxa with data available at extensive temporal and spatial scales (e.g. Chase et al., 2018; Keeping, 2014). We stress that nationwide approaches and collaborations such as the one presented in this study are crucial to drawing inferences at adequate biological and spatial scales, to develop research priorities, and for the implementation of evidence-based conservation and management strategies.

#### ACKNOWLEDGEMENTS

The authors would like to thank the Government of Botswana for permission to undertake research with permits provided from the Ministry of Environment, National Resources Conservation and Tourism. The authors acknowledge the critical role of data sharing and collaboration and would like to thank all of those involved in each of the projects and organizations over the time frame of the study. While each project and organization have numerous funding bodies that generously contributed to the collection of long-term data, we would like to acknowledge a few key bodies that were responsible for the initiation of the project through the Botswana Large Carnivore Workshop 2016 which includes the Department of Wildlife and National Parks (DNWP) of Botswana, Cheetah Conservation Botswana (CCB) and SAVE, as well as San Diego Zoo Global (SDZG), for providing funding towards data collation and analysis of the project.


#### CONFLICT OF INTEREST

The authors declare no conflict of interests arising from this study.

#### DATA AVAILABILITY STATEMENT

Data associated with this paper are available in the Dryad Digital Repository <https://doi.org/10.5061/dryad.ghx3ffb9>.

#### ORCID

Leanne K. Van der Weyde  <https://orcid.org/0000-0003-0981-8856>

#### REFERENCES

- Allredge, M. W., Pollock, K. H., & Simons, T. R. (2006). Estimating detection probabilities from multiple-observer point counts. *The Auk*, 123, 1172–1182. <https://doi.org/10.1093/auk/123.4.1172>
- Batisani, N., & Yarnal, B. (2010). Rainfall variability and trends in semi-arid Botswana: Implications for climate change adaptation policy. *Applied Geography*, 30, 483–489. <https://doi.org/10.1016/j.apgeog.2009.10.007>
- Bauer, H., Chapron, G., Nowell, K., Henschel, P., Funston, P., Hunter, L. T., Macdonald, D. W., & Packer, C. (2015). Lion (*Panthera leo*) populations are declining rapidly across Africa, except in intensively managed areas. *Proceedings of the National Academy of Sciences of United States of America*, 112, 14894–14899.
- Bennitt, E., Bonyongo, M. C., & Harris, S. (2014). Habitat selection by African buffalo (*Syncerus caffer*) in response to landscape-level fluctuations in water availability on two temporal scales. *PLoS One*, 9, e101346. <https://doi.org/10.1371/journal.pone.0101346>
- Boast, L. K., Good, K., & Klein, R. (2015). Translocation of problem predators: Is it an effective way to mitigate conflict between farmers and cheetahs *Acinonyx jubatus* in Botswana? *Oryx*, 50, 537–544.
- Boast, L. K., & Houser, A. M. (2012). Density of large predators on commercial farmlands in Ghanzi, Botswana. *South African Journal of Wildlife Research*, 42, 138–143.
- Broms, K. M., Hooten, M. B., & Fitzpatrick, R. M. (2016). Model selection and assessment for multi-species occupancy models. *Ecology*, 97, 1759–1770. <https://doi.org/10.1890/15-1471.1>
- Burgess, N. D., Hales, J. D. A., Ricketts, T. H., & Dinerstein, E. (2006). Factoring species, non-species values and threats into biodiversity prioritisation across the ecoregions of Africa and its islands. *Biological Conservation*, 127, 383–401.
- Chase, M., Schlossberg, S., Sutcliffe, R., & Seonyatseng, E. (2018). *Dry season aerial survey of elephants and wildlife in northern Botswana*. Elephants Without Borders.
- Center for International Earth Science Information Network - Columbia University (2016). *Gridded population of the world, Version 4 (GPWv4): population count*. Palisades, NY: NASA Socioeconomic Data and Applications Center (SEDAC). <https://doi.org/10.7927/H4X63JVC>. Accessed 13 June 2021.
- Cooke, H. J. (1985). The Kalahari today: A case of conflict over resource use. *The Geographical Journal*, 151, 75–85. <https://doi.org/10.2307/633282>
- Cozzi, G., Broekhuis, F., McNutt, J. W., & Schmid, B. (2013). Density and habitat use of lions and spotted hyenas in northern Botswana and the influence of survey and ecological variables on call-in survey estimation. *Biodiversity & Conservation*, 22, 2937–2956. <https://doi.org/10.1007/s10531-013-0564-7>
- Creel, S., Mills, M. G. L., & McNutt, J. W. (2004). Demography and population dynamics of African wild dogs in three critical populations. In D. Macdonald, & C. Sillero-Zubiri (Eds.), *Biology and conservation of wild canids* (pp. 330–337). Oxford University.
- Cushman, S. A., Elliot, N. B., Bauer, D., Kesch, K., Bahaa-el-din, L., Bothwell, H., Flyman, M., Mtare, G., Macdonald, D. W., & Loveridge, A. J. (2018). Prioritizing core areas, corridors and conflict hotspots for lion conservation in southern Africa. *PLoS One*, 13, e0196213.
- Di Minin, E., Slotow, R., Hunter, L. T. B., Montesino Pouzols, F., Toivonen, T., Verburg, P. H., Leader-Williams, N., Petracca, L., & Moilanen, A. (2016). Global priorities for national carnivore conservation under land use change. *Scientific Reports*, 6, 23814. <https://doi.org/10.1038/srep23814>

- Didan, K. (2015). MYD13A3 MODIS/aqua vegetation indices monthly L3 global 1km SIN Grid V006 [Data set]. Accessed 2018 from <https://doi.org/10.5067/MODIS/MYD13A3.006>.
- Dorazio, R. M., & Royle, J. A. (2005). Estimating size and composition of biological communities by modeling the occurrence of species. *Journal of American Statistical Association*, 100, 389–398. <https://doi.org/10.1198/016214505000000015>
- Durant, S. (2000). Living with the enemy: Avoidance of hyenas and lions by cheetahs in the Serengeti. *Behavioral Ecology*, 11, 624–632. <https://doi.org/10.1093/beheco/11.6.624>
- Fernandez, N., Roman, J., & Delibes, M. (2016). Variability in primary productivity determines metapopulation dynamics. *Proceedings of the Royal Society B: Biological Sciences*, 283(1828), 20152998. <https://doi.org/10.1098/rspb.2015.2998>
- Gelman, A., & Rubin, D. B. (1992). Inference from iterative simulation using multiple sequences. *Statistical Science*, 7, 457–472. <https://doi.org/10.1214/ss/1177011136>
- Hampton, S. E., Strasser, C. A., Tewksbury, J. J., Gram, W. K., Budden, A. E., Batcheller, A. L., Duke, C. S., & Porter, J. H. (2013). Big data and the future of ecology. *Frontiers in Ecology and Evolution*, 11, 156–162. <https://doi.org/10.1890/120103>
- Hemson, G., MacLennan, S., Mills, G., Johnson, P., & Macdonald, D. (2009). Community, lions, livestock and money: A spatial and social analysis of attitudes to wildlife and the conservation value of tourism in a human–carnivore conflict in Botswana. *Biological Conservation*, 142, 2718–2725.
- Henschel, P., Petracca, L. S., Hunter, L. T. B., Kiki, M., Sewadé, C., Tehou, A., & Robinson, H. S. (2016). Determinants of distribution patterns and management needs in a critically endangered lion *Panthera leo* population. *Frontiers in Ecology and Evolution*, 4. <https://doi.org/10.3389/fevo.2016.00110>
- Jetz, W., Sekercioglu, C. H., & Watson, J. E. M. (2008). Ecological correlates and conservation implications of overestimating species geographic ranges. *Conservation Biology*, 22, 110–119. <https://doi.org/10.1111/j.1523-1739.2007.00847.x>
- Keeping, D. (2014). Rapid assessment of wildlife abundance: Estimating animal density with track counts using body mass–day range scaling rules. *Animal Conservation*, 17, 486–497. <https://doi.org/10.1111/acv.12113>
- Kent, V., & Hill, R. A. (2013). The importance of farmland for the conservation of brown hyaena *Parahyaena brunnea*. *Oryx*, 47, 431–440.
- Kéry, M., & Royle, J. A. (2008). Hierarchical Bayes estimation of species richness and occupancy in spatially replicated surveys. *Journal of Applied Ecology*, 45, 589–598. <https://doi.org/10.1111/j.1365-2664.2007.01441.x>
- Kolowski, J. M., & Holekamp, K. E. (2008). Effects of an open refuse pit on space use patterns of spotted hyenas. *African Journal of Ecology*, 46, 341–349. <https://doi.org/10.1111/j.1365-2028.2007.00846.x>
- Kotze, R., Marshal, J. P., Winterbach, C., Winterbach, H., & Keith, M. (2020). Demographic consequences of habitat loss and crowding in large carnivores: A natural experiment. *African Journal of Ecology*. <https://doi.org/10.1111/aje.12786>
- Lele, S. R., Moreno, M., & Bayne, E. (2012). Dealing with detection error in site occupancy surveys: What can we do with a single survey? *Journal of Plant Ecology*, 5, 22–31. <https://doi.org/10.1093/jpe/rtr042>
- Linden, D. W., Siren, A. P. K., & Pekins, P. J. (2018). Integrating telemetry data into spatial capture-recapture modifies inferences on multi-scale resource selection. *Ecosphere*, 9, 1–14. <https://doi.org/10.1002/ecs2.2203>
- Lindsey, P., Du Toit, J. T., & Mills, M. G. L. (2004). The distribution and population status of African wild dogs (*Lycan pictus*) outside protected areas in South Africa. *South African Journal of Wildlife Research*, 34, 143–151.
- MacKenzie, D. I., Nichols, J. D., Hines, J. E., Knutson, M. G., & Franklin, A. B. (2003). Estimating site occupancy, colonization, and local extinction when a species is detected imperfectly. *Ecology*, 84, 2200–2207.
- MacKenzie, D. I., Nichols, J. D., Lachman, G. B., Droege, S., Andrew Royle, J., & Langtimm, C. A. (2002). Estimating site occupancy rates when detection probabilities are less than one. *Ecology*, 83, 2248–2255.
- Maude, G. (2005). *The comparative ecology of the brown hyaena (Hyaena brunnea) in the Makgadikgadi National Park and a neighbouring community cattle area in Botswana*. University of Pretoria.
- Midlane, N., O'Riain, M. J., Balme, G. A., Robinson, H. S., & Hunter, L. T. B. (2014). On tracks: A spoor-based occupancy survey of lion *Panthera leo* distribution in Kafue National Park, Zambia. *Biological Conservation*, 172, 101–108. <https://doi.org/10.1016/j.biocon.2014.02.006>
- Mills, G., & Hofer, H. (2013). *Hyaenas: status survey and conservation action plan*. ICUN/SSC Hyaena Specialist Group.
- Mkonyi, F. J., Estes, A. B., Lichtenfeld, L., & Durant, S. (2018). Large carnivore distribution in relationship to environmental and anthropogenic factors in a multiple-use landscape of Northern Tanzania. *African Journal of Ecology*, 56, 1–12.
- Mueller, T., Olson, K. A., Fuller, T. K., Schaller, G. B., Murray, M. G., & Leimgruber, P. (2007). In search of forage: Predicting dynamic habitats of Mongolian gazelles using satellite-based estimates of vegetation productivity. *Journal of Applied Ecology*, 45, 649–658. <https://doi.org/10.1111/j.1365-2664.2007.01371.x>
- National Resource Services. (2002). Botswana National Land Policy. Issues Report, Report for Ministry of Lands, Housing and Environment Department of Lands.
- Nichols, J. D., Bailey, L. L., O'Connell Jr., A. F., Talancy, N. W., Campbell Grant, E. H., Gilbert, A. T., Annand, E. M., Husband, T. P., & Hines, J. E. (2008). Multi-scale occupancy estimation and modelling using multiple detection methods. *Journal of Applied Ecology*, 45, 1321–1329. <https://doi.org/10.1111/j.1365-2664.2008.01509.x>
- Parry, D. C., & Campbell, B. M. (1990). Wildlife management areas of Botswana. *Botswana Notes and Records*, 22, 65–77.
- Peach, M. A., Cohen, J. B., & Frair, J. L. (2017). Single-visit dynamic occupancy models: an approach to account for imperfect detection with Atlas data. *Journal of Applied Ecology*, 54, 2033–2042. <https://doi.org/10.1111/1365-2664.12925>
- Pettorelli, N., Bro-Jorgensen, J., Durant, S., Blackburn, T., & Carbone, C. (2009). Energy availability and density estimates in African ungulates. *American Naturalist*, 173, 698–704. <https://doi.org/10.1086/597379>
- Plummer, M. (2003). JAGS: A program for analysis of Bayesian graphical models using Gibbs sampling. In: Proceedings of the 3rd International Workshop on Distributed Statistical Computing, Vienna, Austria.
- Qi, J., Holyoak, M., Ning, Y., & Jiang, G. (2020). Ecological thresholds and large carnivores conservation: Implications for the Amur tiger and leopard in China. *Global Ecology and Conservation*, 21, e00837. <https://doi.org/10.1016/j.gecco.2019.e00837>
- R Development Core Team (2019). *R: A language and environment for statistical computing*. R Foundation for Statistical Computing.
- Ray, J. C., Hunter, L., & Zigouris, J. (2005). Setting conservation and research priorities for larger African carnivores. *Wildlife Conservation Society*.
- Rich, L. N., Davis, C. L., Farris, Z. J., Miller, D. A. W., Tucker, J. M., Hamel, S., Farhadinia, M. S., Steenweg, R., Di Bitetti, M. S., Thapa, K., Kane, M. D., Sunarto, S., Robinson, N. P., Paviolo, A., Cruz, P., Martins, Q., Gholikhani, N., Taktehrani, A., Whittington, J., ... Kelly, M. J. (2017). Assessing global patterns in mammalian carnivore occupancy and richness by integrating local camera trap surveys. *Global Ecology and Biogeography*, 26(8), 918–929. <https://doi.org/10.1111/geb.12600>
- Rich, L. N., Miller, D. A. W., Robinson, H. S., McNutt, J. W., & Kelly, M. J. (2017). Carnivore distributions in Botswana are shaped by resource availability and intraguild species. *Journal of Zoology*, 303, 90–98. <https://doi.org/10.1111/jzo.12470>
- Riggio, J., Jacobson, A., Dollar, L., Bauer, H., Becker, M., Dickman, A., Funston, P., Groom, R., Henschel, P., de Iongh, H., Lichtenfeld, L.,

- & Pimm, S. (2012). The size of savannah Africa: A lion's (*Panthera leo*) view. *Biodiversity and Conservation*, 22, 17–35. <https://doi.org/10.1007/s10531-012-0381-4>
- Ripple, W. J., Estes, J. A., Beschta, R. L., Wilmers, C. C., Ritchie, E. G., Hebblewhite, M., Berger, J., Elmhagen, B., Letnic, M., Nelson, M. P., Schmitz, O. J., Smith, D. W., Wallach, A. D., & Wirsing, A. J. (2014). Status and ecological effects of the world's largest carnivores. *Science*, 343, 1241484. <https://doi.org/10.1126/science.1241484>
- Royle, J. A., & Kéry, M. (2007). A Bayesian state-space formulation of dynamic occupancy models. *Ecology*, 88, 1813–1823. <https://doi.org/10.1890/06-0669.1>
- RWCP & IUCN/SSC. (2015). Regional Conservation Strategy for the Cheetah and African Wild Dog in Southern Africa. Revised and Updated. August 2015.
- Scantlebury, D. M., Mills, M. G. L., Wilson, R. P., Wilson, J. W., Mills, M. E. J., Durant, S. M., Bennett, N. C., Bradford, P., Marks, N. J., & Speakman, J. R. (2014). Mammalian energetics. Flexible energetics of cheetah hunting strategies provide resistance against kleptoparasitism. *Science*, 346, 79–81. <https://doi.org/10.1126/science.1256424>
- Schiess-Meier, M., Ramsauer, S., Gabanapelo, T., & König, B. (2007). Livestock predation—insights from problem animal control registers in Botswana. *Journal of Wildlife Management*, 71, 1267–1274. <https://doi.org/10.2193/2006-177>
- Selebatso, M., Bennitt, E., Maude, G., & Fynn, R. W. (2018). Water provision alters wildebeest adaptive habitat selection and resilience in the Central Kalahari. *African Journal of Ecology*, 56, 225–234. <https://doi.org/10.1111/aje.12439>
- Selebatso, M., Moe, S. R., & Swenson, J. E. (2008). Do farmers support cheetah *Acinonyx jubatus* conservation in Botswana despite livestock depredation? *Oryx*, 42, 430–436. <https://doi.org/10.1017/S0030605308001154>
- Statistics Botswana (2014). *Population and housing census 2011 analytical report*. Statistics Botswana.
- Stein, A. B., & Hayssen, V. (2013). *Panthera pardus* (Carnivora: Felidae). *Mammalian Species*, 900, 30–48.
- Swanson, A., Caro, T., Davies-Mostert, H., Mills, M. G. L., Macdonald, D. W., Borner, M., Masenga, E., & Packer, C. (2014). Cheetahs and wild dogs show contrasting patterns of suppression by lions. *Journal of Animal Ecology*, 83, 1418–1427. <https://doi.org/10.1111/1365-2656.12231>
- Twyman, C. (2001). Natural resource use and livelihoods in Botswana's wildlife management areas. *Applied Geography*, 21, 45–68. [https://doi.org/10.1016/S0143-6228\(00\)00016-3](https://doi.org/10.1016/S0143-6228(00)00016-3)
- Van der Weyde, L. K., Mbisana, C., & Klein, R. (2018). Multi-species occupancy modelling of a carnivore guild in wildlife management areas in the Kalahari. *Biological Conservation*, 220, 21–28. <https://doi.org/10.1016/j.biocon.2018.01.033>
- Wachter, B., Thalwitzer, S., Hofer, H., Lonzer, J., Hildebrandt, T. B., & Hermes, R. (2011). Reproductive history and absence of predators are important determinants of reproductive fitness: The cheetah controversy revisited. *Conservation Letters*, 4, 47–54. <https://doi.org/10.1111/j.1755-263X.2010.00142.x>
- Weise, F. J., Hayward, M. W., Aguirre, R. C., Tomeletso, M., Gadimang, P., Somers, M. J., & Stein, A. B. (2018). Size, shape and maintenance matter: A critical appraisal of a global carnivore conflict mitigation strategy – Livestock protection kraals in northern Botswana. *Biological Conservation*, 225, 88–97.
- Weise, F. J., Vijay, V., Jacobson, A. P., Schoonover, R. F., Groom, R. J., Horgan, J., Keeping, D., Klein, R., Marnewick, K., Maude, G., Melzheimer, J., Mills, G., van der Merwe, V., van der Me, E., van Vuuren, R. J., Wachter, B., & Pimm, S. L. (2017). The distribution and numbers of cheetah (*Acinonyx jubatus*) in southern Africa. *PeerJ*, 5, e4096.
- Winterbach, C. W., Maude, G., Neo-Mahapeleng, G., Klein, R., Boast, L., Rich, L. N., & Somers, M. J. (2017). Conservation implications of brown hyaena (*Parahyaena brunnea*) population densities and distribution across landscapes in Botswana. *Koedoe: African Protected Area Conservation and Science*, 59(2), 1–6.
- Winterbach, H., Winterbach, C., Boast, L. K., Klein, R., & Somers, M. J. (2013). Relative availability of natural prey versus livestock predicts landscape suitability for cheetahs *Acinonyx jubatus*. *PeerJ*, 3, e1033.
- Winterbach, H. E. K., Winterbach, C. W., & Somers, M. J. (2014). Landscape suitability in Botswana for the conservation of its six large African carnivores. *PLoS One*, 9, e100202. <https://doi.org/10.1371/journal.pone.0100202>
- Woodroffe, R. (2000). Predators and people: Using human densities to interpret declines of large carnivores. *Animal Behavior*, 3, 165–173. <https://doi.org/10.1111/j.1469-1795.2000.tb00241.x>
- Yirga, G., Leirs, H., De Longh, H. H., Asmelash, T., & Gebrihiwot, K. (2016). Spotted hyena (*Crocuta crocuta*) concentrate around urban waste dumps across Tigray, northern Ethiopia. *Wildlife Research*, 42, 563–569.

#### BIOSKETCH

A large body of research has been collected in Botswana on large carnivores and conservation issues surrounding these species over many years. Collating this research is important to address the status of large carnivores nationally, determine population trends and improve the focus for future research to achieve some of the country's mandated conservation objectives involving these iconic species. A workshop gathering researchers, government, veterinary other relevant stakeholders held in 2016 aimed to specifically address these issues, and the results of this work were one of the priorities set during this workshop. Further information can be found at [www.botswanacarnivoreforum.wordpress.com](http://www.botswanacarnivoreforum.wordpress.com).

#### SUPPORTING INFORMATION

Additional supporting information may be found online in the Supporting Information section.

**How to cite this article:** Van der Weyde, L. K., Tobler, M. W., Gielen, M. C., Cozzi, G., Weise, F. J., Adams, T., Bauer, D., Bennitt, E., Bowles, M., Brassine, A., Broekhuis, F., Chase, M., Collins, K., Finerty, G. E., Golabek, K., Hartley, R., Henley, S., Isden, J., Keeping, D., ... Flyman, M. V. (2022). Collaboration for conservation: Assessing countrywide carnivore occupancy dynamics from sparse data. *Diversity and Distributions*, 28, 917–929. <https://doi.org/10.1111/ddi.13386>